



AYLIK RAPOR

Automotive Industry Monthly Report

Ekim / October 2014

- **Üretim**/Production
- **Satış**/Sales
- **İthalat**/Imports
- **İhracat**/Exports

OSD "OICA" Üyesidir



OSD is a Member of "OICA"

2014 Ekim Ayı Özeti / 2014 October Summary

KONULAR / MATTERS		EKİM / OCTOBER			10 AY / 10 MONTHS			SON 12 AYLIK / YoY		
		2013	2014	2014/2013 (%)	2013	2014	2014/2013 (%)	2013	2014	2014/2013 (%)
Üretim / Production	Toplam / Total	88.579	100.977	14	928.722	936.759	1	1.117.051	1.133.571	1
	Otomobil / P.Cars	51.984	62.001	19	516.514	593.493	15	614.390	710.583	16
Pazar / Market	Toplam / Total	60.399	69.271	15	674.511	569.615	-16	870.669	788.228	-9
	Otomobil / P.Cars	46.985	50.814	8	499.339	417.582	-16	632.562	582.898	-8
İthalat / Import	Toplam / Total	41.414	44.067	6	465.772	376.293	-19	590.214	526.130	-11
	Otomobil / P.Cars	36.001	36.292	1	389.076	308.861	-21	491.617	437.312	-11
İhracat / Export	Toplam / Total	65.539	69.187	6	683.679	722.518	6	817.330	867.310	6
	Otomobil / P.Cars	40.041	44.791	12	394.399	478.352	21	469.771	568.457	21
İhracat / Export (\$)	Toplam / Total **	1.761.565.653	1.776.052.112	1	17.640.096.799	19.079.057.401	8	21.064.381.945	23.000.211.761	9
	Otomobil / P.Cars	503.581.601	562.407.589	12	5.672.608.723	6.107.956.255	8	6.795.274.780	7.290.744.813	7

PARAMETRELER / PARAMETERS		EKİM / OCTOBER			10 AY / 10 MONTHS			SON 12 AYLIK / YoY		
		2013	2014	2014/2013 (%)	2013	2014	2014/2013 (%)	2013	2014	2014/2013 (%)
ÜFE / PPI		0,69	0,92	**	5,15	8,22	**	6,77	10,10	**
TÜFE / CPI		1,80	1,90	**	6,90	8,45	**	7,71	8,96	**
Sanayi Endeksi / Industry Index		0,00	0,35	**	5,36	9,11	**	8,03	10,84	**
\$ (*)		1,9881	2,2012	11	1,9043	2,1760	14	1,8846	2,1591	15
EURO (*)		2,7181	2,7643	2	2,5112	2,9119	16	2,4826	2,8997	17
Japon Yeni (*)		2,0123	1,9605	-3	1,9573	2,0876	7	1,9841	2,0710	4

(*) Ortalama Değerler / Average Values

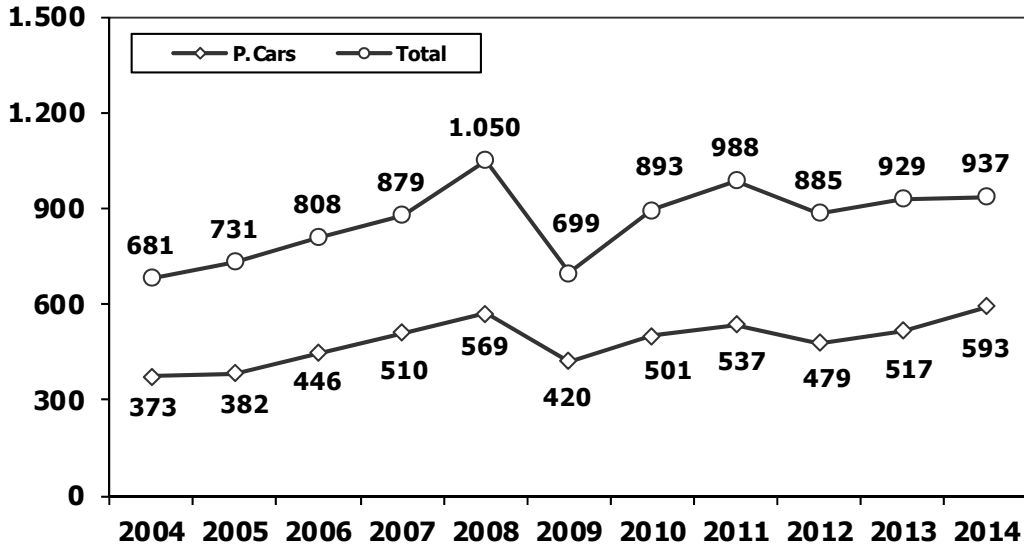
(**) Toplam Sanayi / Total Industry Including Components

2013/2014 Yılları Üretim 2013/2014 Production

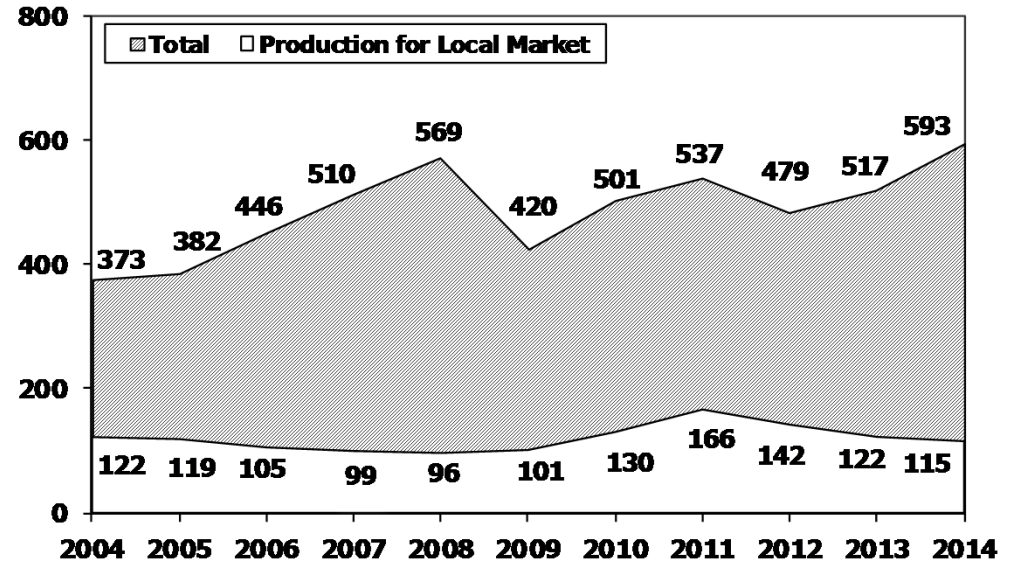
K.KAMYON : AYA 3.5-12 Ton (L.Truck:GWV 3.5-12 Ton)
B.KAMYON : AYA 12 Ton'dan Büyük (M.Truck:GWV 12 Ton And Up)

TİPLER	EKİM AYI ÜRETİMİ October Production		10 AYLIK ÜRETİM 10 Months Production		DEĞİŞİM % Percent Change %	
	2013	2014	2013	2014	EKİM October	10 AY 10 Months
OTOMOBİL - Pass.Car	51.984	62.001	516.514	593.493	19	15
TİCARİ ARAÇLAR - Commercial Vehicles	36.595	38.976	412.208	343.266	7	-17
* B. KAMYON - M. Truck	1.911	2.207	21.203	21.475	15	1
* K. KAMYON - L. Truck	403	246	3.563	2.664	-39	-25
* KAMYONET - Pick Up	30.094	32.363	344.390	281.745	8	-18
* OTOBÜS - Bus	538	435	7.255	5.327	-19	-27
* MİNİBÜS - Minibus	3.201	3.331	31.542	27.471	4	-13
* MİDİBÜS - Midibus	448	394	4.255	4.584	-12	8
TAŞIT ARAÇLARI TOPLAM - MV Total	88.579	100.977	928.722	936.759	14	1
TRAKTÖR - F.Tractor	3.125	4.103	33.451	40.752	31	22
GENEL TOPLAM - Grand Total	91.704	105.080	962.173	977.511	15	2

Toplam Üretim ve Otomobil Üretimi (x1000) (Ocak-Ekim)
Total & P.Cars Production (x1000) (January- October)



Otomobil Üretimi ve İhracat (x1000) (Ocak-Ekim)
P.Cars Production & Exports (x1000) (January- October)



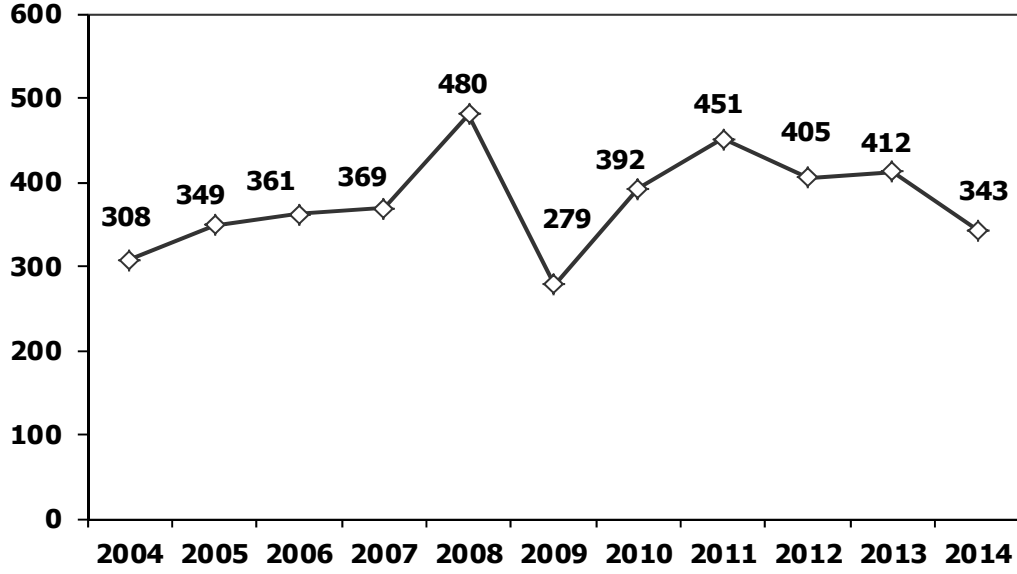
10 Aylık Üretim (10 Months Production)

FİRMALAR Companies	OTOMOBİL Pass.Car	%	K.KAMYON L.Truck	%	B.KAMYON Mid.Truck	%	KAMYONET Pick Up	%	OTOBÜS Bus	%	MİNİBÜS Mini-Bus	%	MİDİBÜS Midi-Bus	%	TRAKTÖR F.Tractor	%	TOPLAM Totals
A.I.O.S.	0	0	2.361	89	0	0	1.987	1	96	2	0	0	1.521	33	0	0	5.965
FORD OTOSAN	7.440	1	0	0	6.133	29	151.935	54	0	0	26.215	95	0	0	0	0	191.723
HATTAT TARIM	0	0	0	0	0	0	0	0	0	0	0	0	0	0	2.238	5	2.238
HONDA TÜRKİYE	9.953	2	0	0	0	0	0	0	0	0	0	0	0	0	0	0	9.953
HYUNDAI ASSAN	163.522	28	0	0	0	0	0	0	0	0	0	0	0	0	0	0	163.522
KARSAN	0	0	0	0	3	0	15	0	43	1	1.245	5	77	2	0	0	1.383
M. BENZ TÜRK	0	0	0	0	15.339	71	0	0	3.010	57	0	0	0	0	0	0	18.349
MAN TÜRKİYE	0	0	0	0	0	0	0	0	871	16	0	0	0	0	0	0	871
OTOKAR	0	0	303	11	0	0	245	0	349	7	11	0	1.753	38	0	0	2.661
OYAK RENAULT	255.100	43	0	0	0	0	0	0	0	0	0	0	0	0	0	0	255.100
TEMSA GLOBAL	0	0	0	0	0	0	0	0	958	18	0	0	1.233	27	0	0	2.191
TOFAŞ	48.682	8	0	0	0	0	127.563	45	0	0	0	0	0	0	0	0	176.245
TOYOTA	108.796	18	0	0	0	0	0	0	0	0	0	0	0	0	0	0	108.796
TÜRK TRAKTÖR	0	0	0	0	0	0	0	0	0	0	0	0	0	0	38.514	95	38.514
TOPLAM	593.493	100	2.664	100	21.475	100	281.745	100	5.327	100	27.471	100	4.584	100	40.752	100	977.511

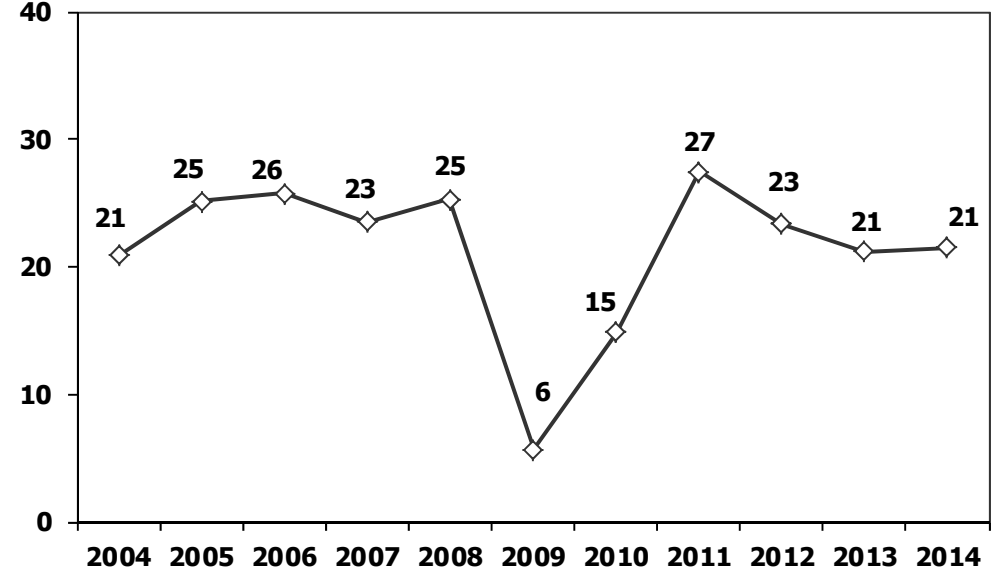
Ekim Ayı Üretimi (October Production)

FİRMALAR Companies	OTOMOBİL Pass.Car	%	K.KAMYON L.Truck	%	B.KAMYON Mid.Truck	%	KAMYONET Pick Up	%	OTOBÜS Bus	%	MİNİBÜS Mini-Bus	%	MİDİBÜS Midi-Bus	%	TRAKTÖR F.Tractor	%	TOPLAM Totals
A.I.O.S.	0	0	243	99	0	0	311	1	19	4	0	0	127	32	0	0	700
FORD OTOSAN	610	1	0	0	697	32	18.288	57	0	0	3.142	94	0	0	0	0	22.737
HATTAT	0	0	0	0	0	0	0	0	0	0	0	0	0	0	138	3	138
HONDA TÜRKİYE	658	1	0	0	0	0	0	0	0	0	0	0	0	0	0	0	658
HYUNDAI ASSAN	15.225	25	0	0	0	0	0	0	0	0	0	0	0	0	0	0	15.225
KARSAN	0	0	0	0	3	0	6	0	0	0	189	6	4	1	0	0	202
M. BENZ TÜRK	0	0	0	0	1.507	68	0	0	260	60	0	0	0	0	0	0	1.767
MAN TÜRKİYE	0	0	0	0	0	0	0	0	93	21	0	0	0	0	0	0	93
OTOKAR	0	0	3	1	0	0	11	0	38	9	0	0	168	43	0	0	220
OYAK RENAULT	29.716	48	0	0	0	0	0	0	0	0	0	0	0	0	0	0	29.716
TEMSA	0	0	0	0	0	0	0	0	25	6	0	0	95	24	0	0	120
TOFAŞ	6.295	10	0	0	0	0	13.747	42	0	0	0	0	0	0	0	0	20.042
TOYOTA	9.497	15	0	0	0	0	0	0	0	0	0	0	0	0	0	0	9.497
TÜRK TRAKTÖR	0	0	0	0	0	0	0	0	0	0	0	0	0	0	3.965	97	3.965
TOPLAM	62.001	100	246	100	2.207	100	32.363	100	435	100	3.331	100	394	100	4.103	100	105.080

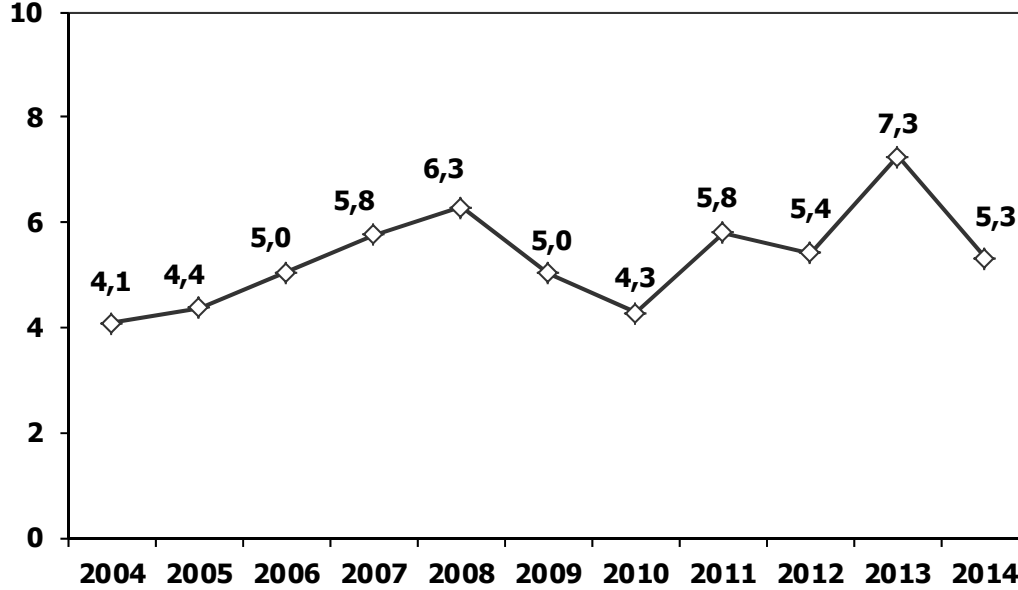
Ticari Araç Üretimi (x1000) (Ocak-Ekim)
Commercial Vehicle Production (x1000) (January- October)



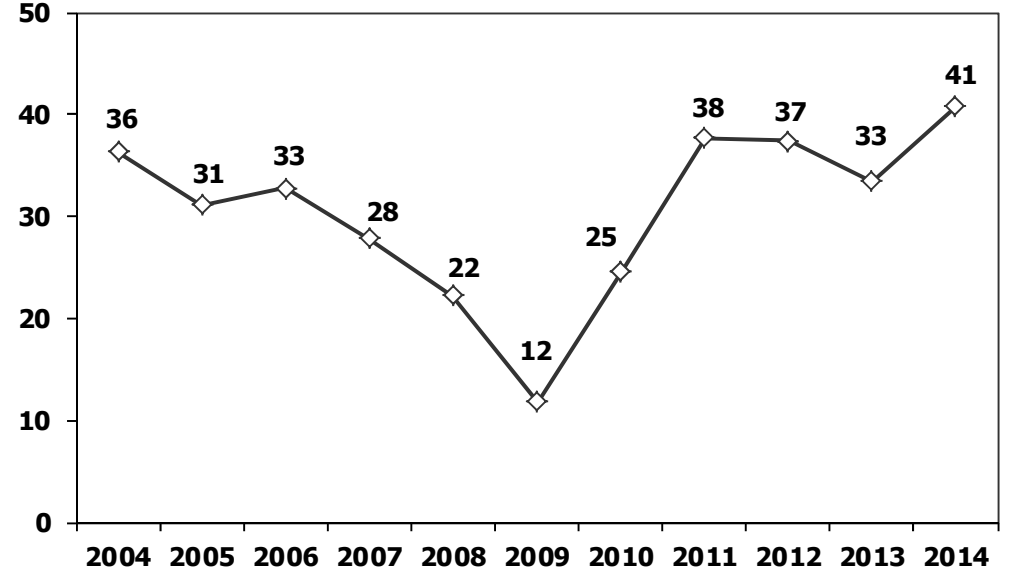
(AYA >12 Ton) **Büyük Kamyon Üretimi** (x1000) (Ocak-Ekim)
(GVW >12 Ton) Heavy Truck Production (x1000) (January- October)



Otobüs Üretimi (x1000) (Ocak-Ekim)
Bus Production (x1000) (January- October)

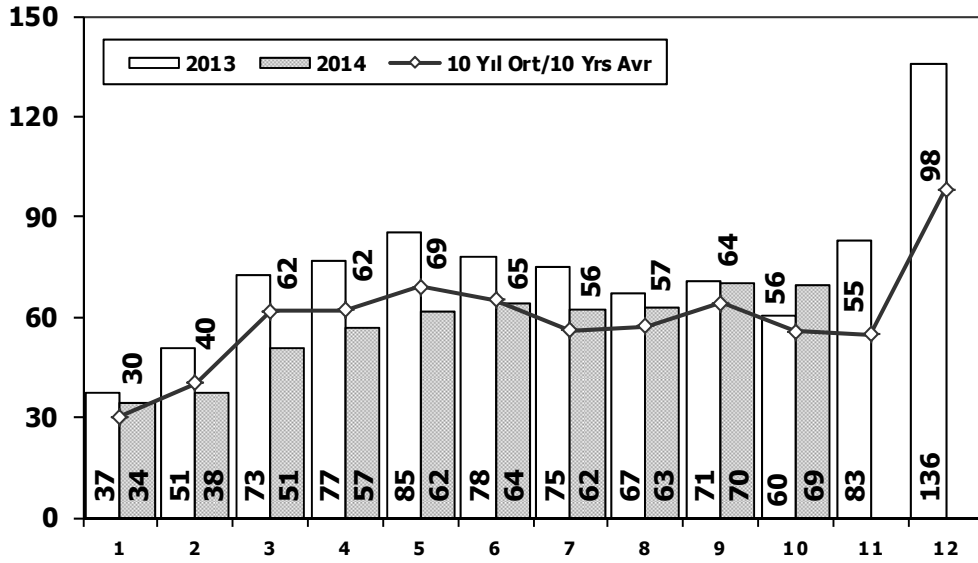


Traktör Üretimi (x1000) (Ocak-Ekim)
F. Tractor Production (x1000) (January- October)



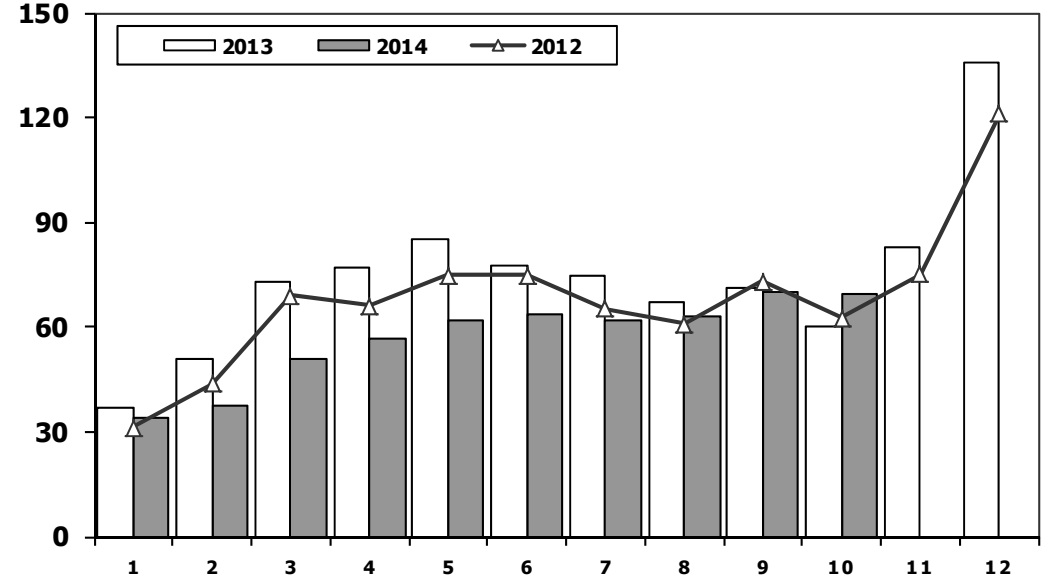
Toplam Pazarın Analizi (x1000)

Total Market Analysis (x1000)



Toplam Pazar (x1000)

Total Market (x1000)

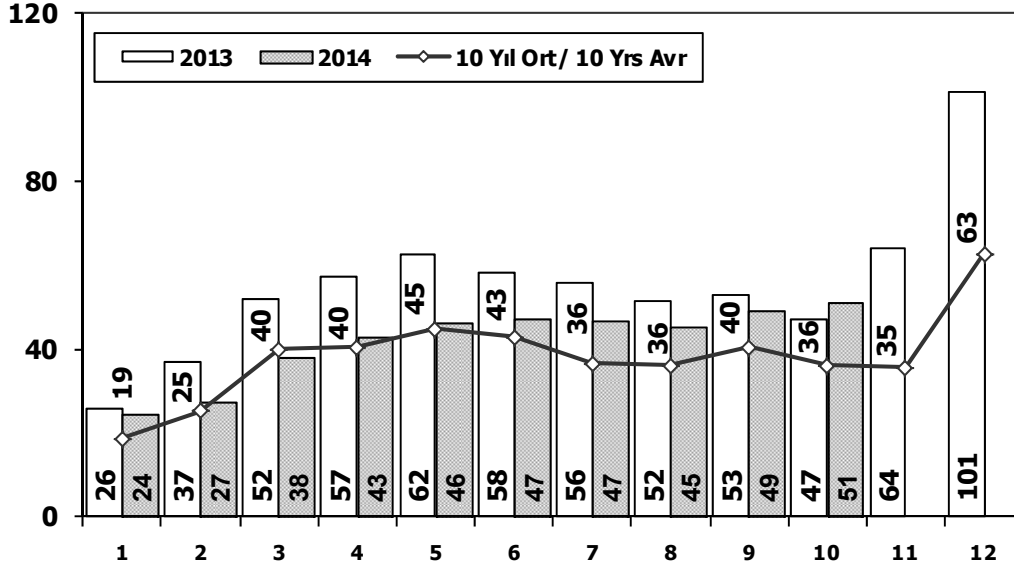


Aylar / Months	10 Yil Ort. 10 Yrs Avr. (x1000)	2014 (x1000)	%
1	30,3	34,3	13,0
2	40,3	37,5	-6,8
3	61,8	50,9	-17,7
4	62,0	56,7	-8,4
5	69,1	61,9	-10,5
6	65,2	63,9	-2,1
7	56,0	62,2	11,0
8	57,1	62,8	10,1
9	64,1	70,2	9,5
10	55,6	69,3	24,7
Total	561,5	569,6	1,4

	1	2	3	4	5	6	7	8	9	10	11	12	10 Ay/Mo	Total
2004	38.621	39.389	71.723	77.056	84.634	63.228	57.307	56.422	59.429	56.153	52.237	85.070	603.962	741.269
2005	22.687	38.291	64.502	60.873	71.383	64.379	63.847	68.647	66.580	60.791	65.719	110.838	581.980	758.537
2006	29.969	44.646	65.090	68.853	83.289	58.203	40.037	47.374	49.629	39.805	55.898	82.722	526.895	665.515
2007	24.950	31.702	45.488	45.633	51.255	51.661	50.117	54.171	50.078	56.058	67.017	106.076	461.113	634.206
2008	33.792	38.121	56.814	50.967	51.627	49.393	44.692	46.592	46.829	35.147	28.152	44.418	453.974	526.544
2009	20.631	22.846	56.531	54.426	64.887	63.102	30.246	37.092	83.403	22.117	29.202	91.386	455.281	575.869
2010	21.050	32.313	53.828	57.079	61.628	63.390	63.718	64.645	66.601	76.780	77.406	154.734	561.032	793.172
2011	47.658	62.348	83.333	82.071	85.093	85.863	65.364	61.378	63.643	72.640	67.195	134.281	709.391	910.867
2012	31.219	43.827	68.957	66.014	74.820	74.781	65.122	60.848	73.197	62.677	75.045	121.113	621.462	817.620
2013	37.140	50.931	72.688	77.015	85.421	77.771	74.726	67.383	71.037	60.399	83.017	135.596	674.511	893.124
2014	34.290	37.500	50.850	56.744	61.865	63.880	62.192	62.837	70.186	69.271	0	0	569.615	569.615

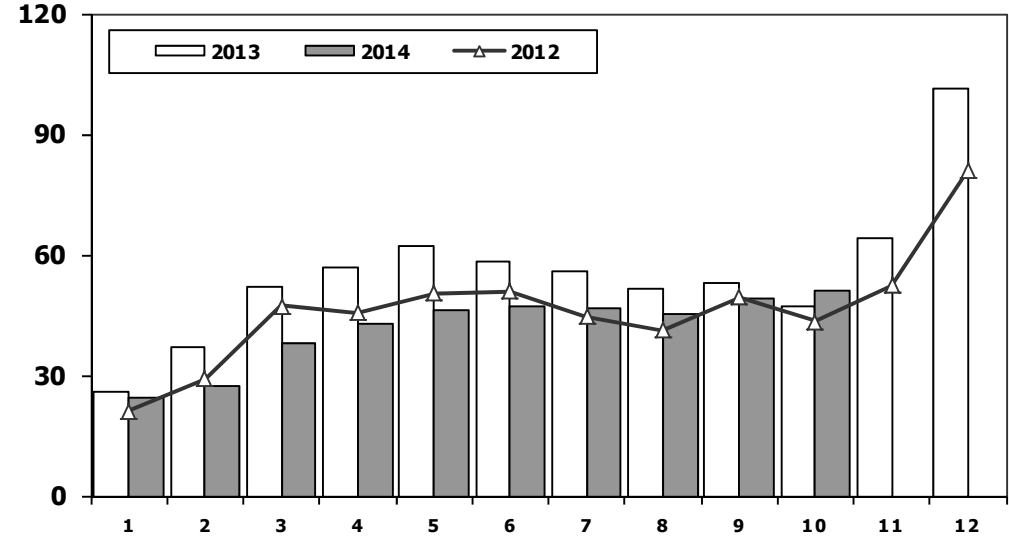
Otomobil Pazarının Analizi (x1000)

P.Cars Market Analysis (x1000)



Otomobil Pazarı (x1000)

P.Cars Market (x1000)

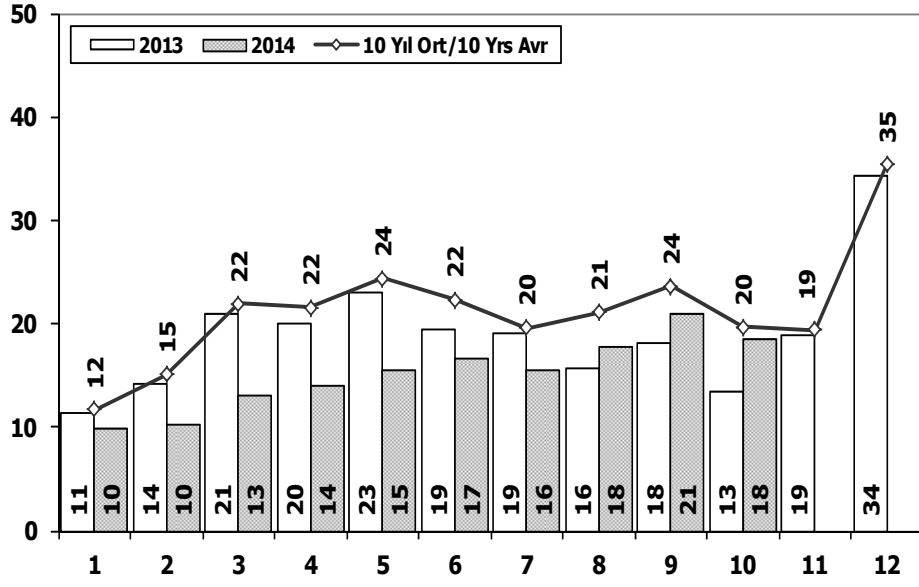


Aylar / Months	10 Yil Ort. 10 Yrs Avr. (x1000)	2014 (x1000)	%
1	18,7	24,4	30,5
2	25,2	27,2	7,9
3	39,9	37,8	-5,3
4	40,4	42,8	5,9
5	44,8	46,4	3,6
6	42,9	47,3	10,2
7	36,4	46,6	28,1
8	36,0	45,1	25,5
9	40,5	49,3	21,7
10	35,9	50,8	41,5
Total	360,5	417,6	15,8

	1	2	3	4	5	6	7	8	9	10	11	12	10 Ay/Mo	Total
2004	25.625	23.695	46.075	47.995	54.610	37.671	33.410	33.709	33.383	34.292	30.547	50.197	370.465	451.209
2005	11.595	21.012	38.129	36.206	38.480	40.900	38.969	38.648	36.410	34.960	37.841	65.447	335.309	438.597
2006	16.506	24.929	36.996	40.177	48.521	32.982	22.653	24.873	27.517	21.237	30.477	46.351	296.391	373.219
2007	13.186	17.212	24.336	25.204	29.067	30.126	28.246	28.469	27.662	32.569	39.643	61.745	256.077	357.465
2008	18.588	21.196	34.147	30.313	31.477	28.724	25.530	26.102	27.053	19.788	17.201	25.879	262.918	305.998
2009	13.173	14.492	40.622	36.202	44.188	41.019	16.637	22.537	52.162	13.828	17.781	57.178	294.860	369.819
2010	12.594	20.651	33.958	36.549	40.467	42.086	41.399	42.222	42.477	47.859	50.061	99.461	360.262	509.784
2011	29.868	39.004	54.023	53.835	56.302	56.714	43.518	38.875	39.964	47.508	44.951	88.957	459.611	593.519
2012	21.077	29.189	47.270	45.645	50.460	50.849	44.531	41.236	49.360	43.440	52.297	80.926	423.057	556.280
2013	25.835	36.814	51.785	56.999	62.383	58.290	55.712	51.611	52.925	46.985	64.117	101.199	499.339	664.655
2014	24.368	27.167	37.812	42.769	46.379	47.278	46.602	45.131	49.262	50.814	0	0	417.582	417.582

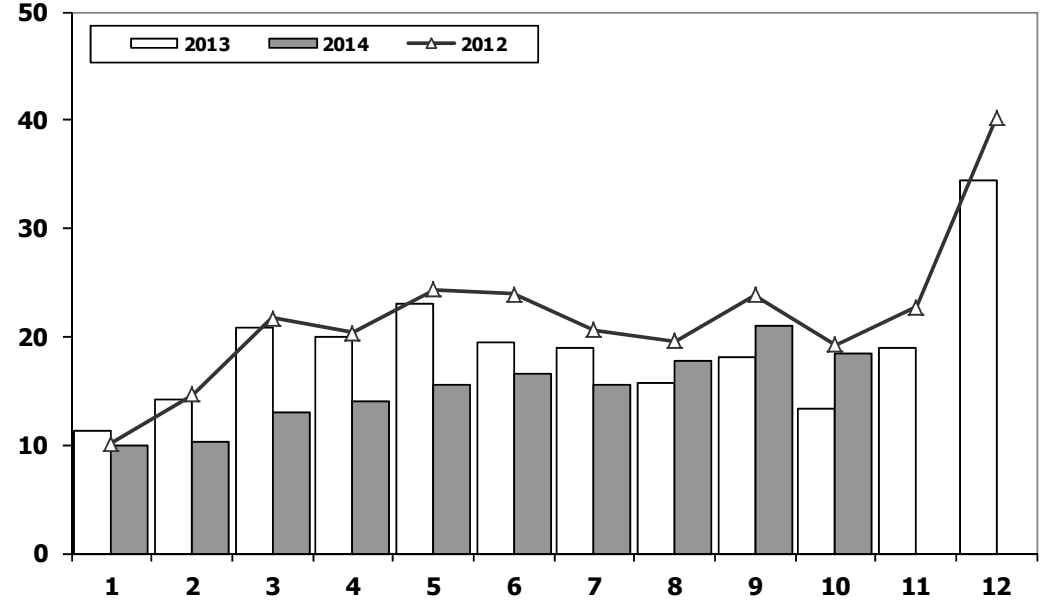
Ticari Araç Pazarının Analizi (x1000)

CV Market Analysis (x1000)



Ticari Araç Pazarı (x1000)

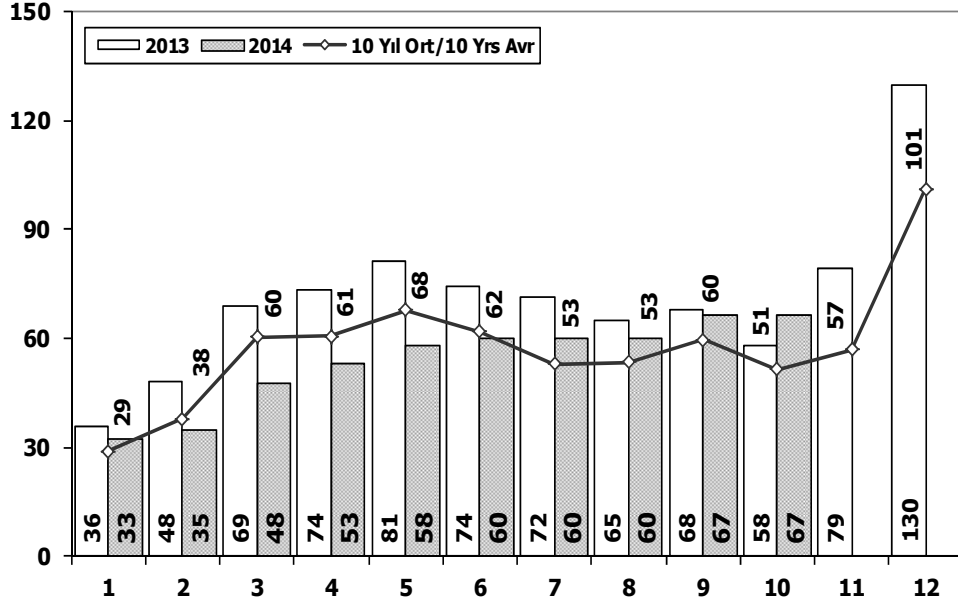
CV Total Market (Local + Imports) (x1000)



Ay / Months	10 Yil Ort. / 10 Yrs Avr. (x1000)	2014 (x1000)	%
1	11,7	9,9	-14,9
2	15,1	10,3	-31,5
3	21,9	13,0	-40,5
4	21,6	14,0	-35,2
5	24,4	15,5	-36,4
6	22,3	16,6	-25,7
7	19,6	15,6	-20,6
8	21,1	17,7	-16,2
9	23,6	20,9	-11,5
10	19,7	18,5	-6,2
Total	201,0	152,0	-24,4

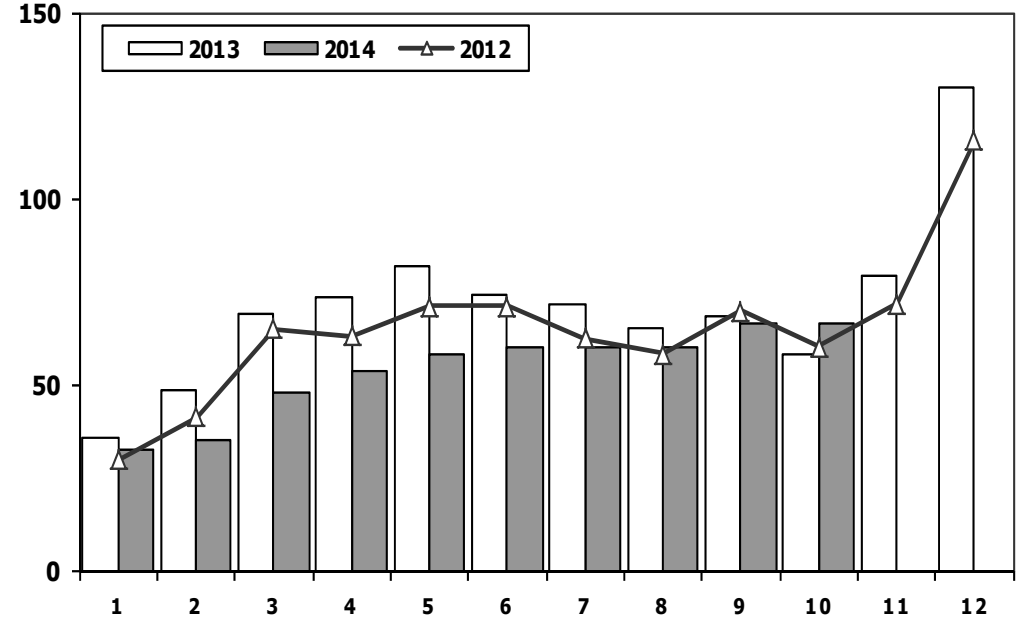
	1	2	3	4	5	6	7	8	9	10	11	12	10 Ay/Mo	Total
2004	12.996	15.694	25.648	29.061	30.024	25.557	23.897	22.713	26.046	21.861	21.690	34.873	233.497	290.060
2005	11.092	17.279	26.373	24.667	32.903	23.479	24.878	29.999	30.170	25.831	27.878	45.391	246.671	319.940
2006	13.463	19.717	28.094	28.676	34.768	25.221	17.384	22.501	22.112	18.568	25.421	36.371	230.504	292.296
2007	11.764	14.490	21.152	20.429	22.188	21.535	21.871	25.702	22.416	23.489	27.374	44.331	205.036	276.741
2008	15.204	16.925	22.667	20.654	20.150	20.669	19.162	20.490	19.776	15.359	10.951	18.539	191.056	220.546
2009	7.458	8.354	15.909	18.224	20.699	22.083	13.609	14.555	31.241	8.289	11.421	34.208	160.421	206.050
2010	8.456	11.662	19.870	20.530	21.161	21.304	22.319	22.423	24.124	28.921	27.345	55.273	200.770	283.388
2011	17.790	23.344	29.310	28.236	28.791	29.149	21.846	22.503	23.679	25.132	22.244	45.324	249.780	317.348
2012	10.142	14.638	21.687	20.369	24.360	23.932	20.591	19.612	23.837	19.237	22.748	40.187	198.405	261.340
2013	11.305	14.117	20.903	20.016	23.038	19.481	19.014	15.772	18.112	13.414	18.900	34.397	175.172	228.469
2014	9.922	10.333	13.038	13.975	15.486	16.602	15.590	17.706	20.924	18.457	0	0	152.033	152.033

Hafif Araç Pazarının Analizi (x1000) LV Market Analysis (x1000)



Aylar / Months	10 Yıl Ort. 10 Yrs Avr. (x1000)	2014 (x1000)	%
1	28,9	32,7	12,9
2	37,9	35,0	-7,7
3	60,2	47,6	-21,0
4	60,6	53,3	-12,0
5	67,8	58,1	-14,3
6	61,9	60,2	-2,7
7	53,0	59,9	13,1
8	53,4	60,2	12,8
9	59,7	66,5	11,4
10	51,4	66,6	29,6
Total	534,8	540,1	1,0

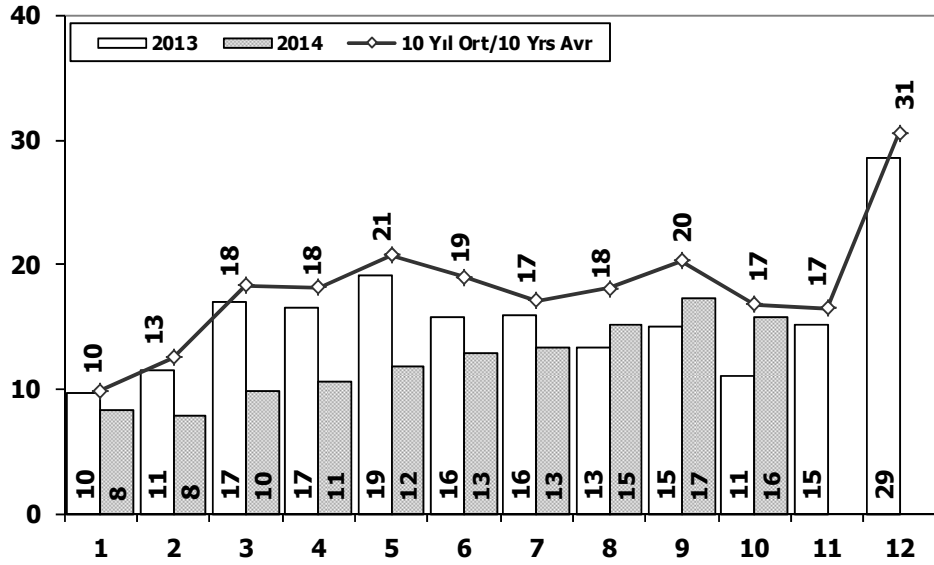
Hafif Araç Pazarı (x1000) LV Total Market (Local + Imports) (x1000)



	1	2	3	4	5	6	7	8	9	10	11	12	10 Ay/Mo	Total
2004	36.352	37.079	67.144	73.075	80.290	59.730	54.816	52.876	55.609	53.000	49.200	78.924	569.971	698.095
2005	20.747	35.766	60.707	56.844	67.357	60.796	61.015	64.011	61.954	56.638	61.364	103.209	545.835	710.408
2006	27.917	40.938	60.052	64.038	78.229	54.355	37.251	43.767	46.109	36.542	51.867	76.787	489.198	617.852
2007	23.117	29.184	41.890	42.366	47.938	48.674	47.490	50.558	46.581	52.725	63.313	100.926	430.523	594.762
2008	31.527	35.251	53.649	47.701	48.598	46.324	42.156	43.670	43.932	32.884	26.253	42.078	425.692	494.023
2009	19.606	21.742	55.111	52.640	63.191	61.067	28.845	35.609	81.397	21.033	27.962	88.923	440.241	557.126
2010	20.095	31.172	51.769	54.946	59.377	60.896	61.345	61.764	63.814	73.404	73.962	148.369	538.582	760.913
2011	44.892	58.663	78.403	77.695	80.646	81.573	63.044	58.406	60.129	69.421	63.657	127.910	672.872	864.439
2012	29.545	41.324	64.884	62.949	70.863	71.067	62.304	58.148	69.629	59.938	71.710	115.400	590.651	777.761
2013	35.523	48.307	68.774	73.575	81.468	74.096	71.596	65.043	67.963	58.014	79.301	129.718	644.359	853.378
2014	32.670	35.021	47.581	53.305	58.121	60.163	59.907	60.199	66.531	66.573	0	0	540.071	540.071

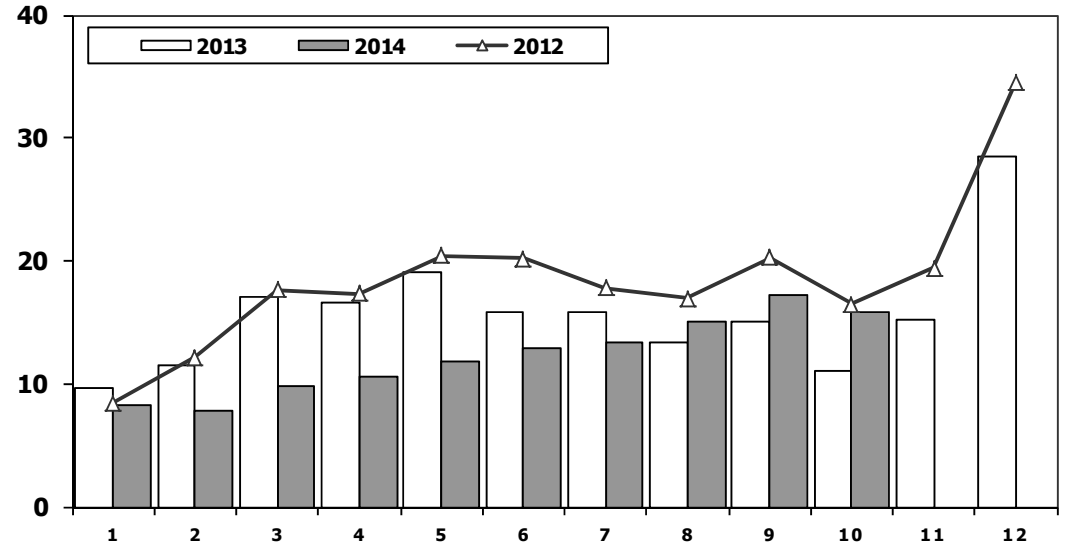
Hafif Ticari Araç Pazarının Analizi (x1000)

LCV Market Analysis (x1000)



Hafif Ticari Araç Pazarı (x1000)

LCV Total Market (Local + Imports) (x1000)

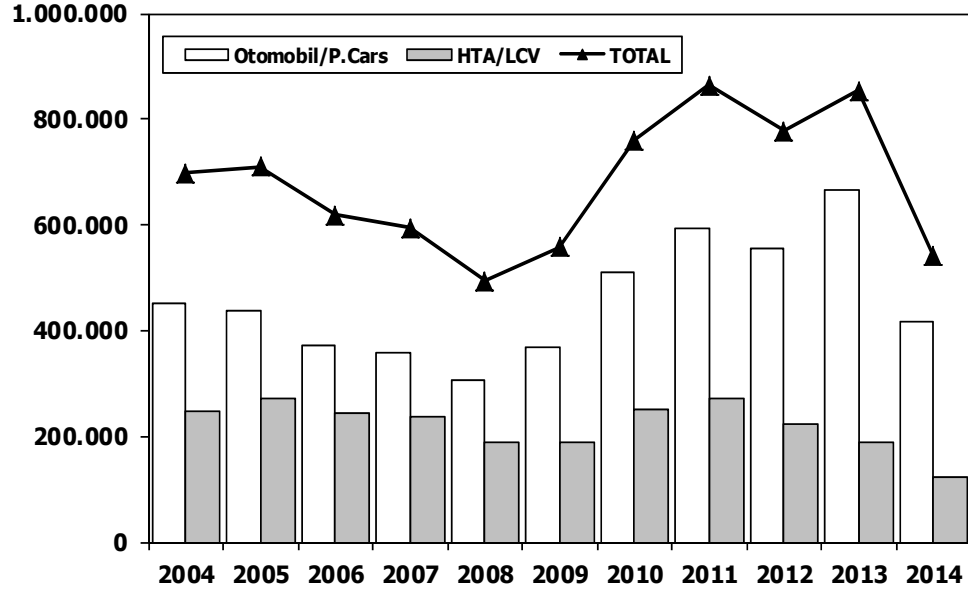


Aylar / Months	10 Yil Ort. 10 Yrs Avr. (x1000)	2013 (x1000)	%
1	9,9	8,3	-16,0
2	12,6	7,9	-37,5
3	18,4	9,8	-46,8
4	18,2	10,5	-42,2
5	20,8	11,7	-43,6
6	19,0	12,9	-32,2
7	17,1	13,3	-22,3
8	18,1	15,1	-17,0
9	20,3	17,3	-15,0
10	16,8	15,8	-6,3
Total	171,3	122,5	-28,5

	1	2	3	4	5	6	7	8	9	10	11	12	10 Ay/Mo	Total
2004	10.727	13.384	21.069	25.080	25.680	22.059	21.406	19.167	22.226	18.708	18.653	28.727	199.506	246.886
2005	9.152	14.754	22.578	20.638	28.877	19.896	22.046	25.363	25.544	21.678	23.523	37.762	210.526	271.811
2006	11.411	16.009	23.056	23.861	29.708	21.373	14.598	18.894	18.592	15.305	21.390	30.436	192.807	244.633
2007	9.931	11.972	17.554	17.162	18.871	18.548	19.244	22.089	18.919	20.156	23.670	39.181	174.446	237.297
2008	12.939	14.055	19.502	17.388	17.121	17.600	16.626	17.568	16.879	13.096	9.052	16.199	162.774	188.025
2009	6.433	7.250	14.489	16.438	19.003	20.048	12.208	13.072	29.235	7.205	10.181	31.745	145.381	187.307
2010	7.501	10.521	17.811	18.397	18.910	18.810	19.946	19.542	21.337	25.545	23.901	48.908	178.320	251.129
2011	15.024	19.659	24.380	23.860	24.344	24.859	19.526	19.531	20.165	21.913	18.706	38.953	213.261	270.920
2012	8.468	12.135	17.614	17.304	20.403	20.218	17.773	16.912	20.269	16.498	19.413	34.474	167.594	221.481
2013	9.688	11.493	16.989	16.576	19.085	15.806	15.884	13.432	15.038	11.029	15.184	28.519	145.020	188.723
2014	8.302	7.854	9.769	10.536	11.742	12.885	13.305	15.068	17.269	15.759	0	0	122.489	122.489

Hafif Arac Pazarı (AYA < 3.5 Ton)

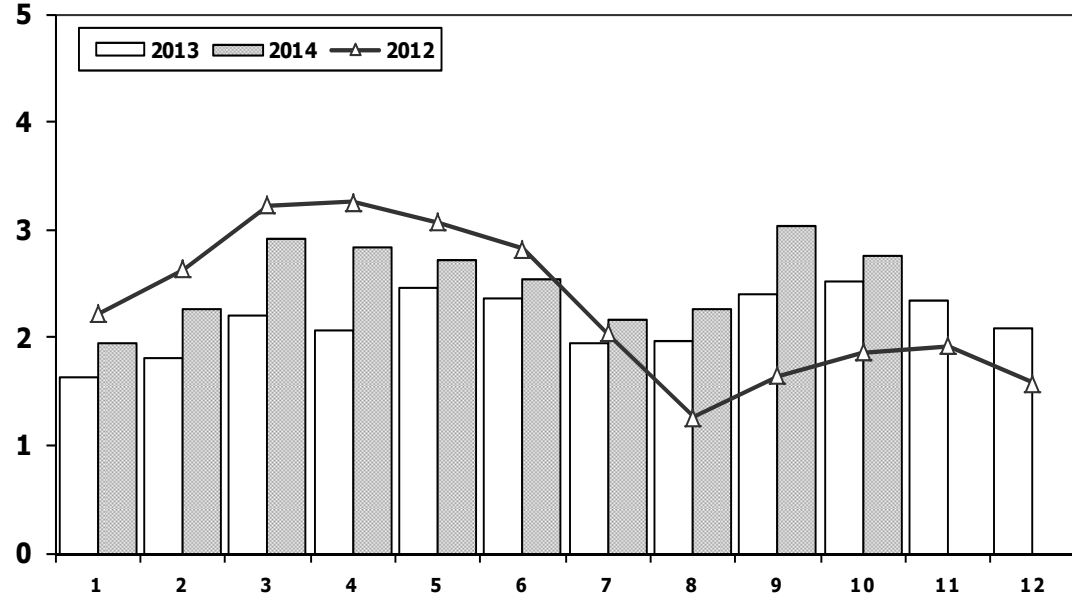
Light Vehicle Market (GVW < 3.5 Ton)



	2004	2005	2006	2007	2008	2009	2010	2011	2012	2013	2014
Otomobil/P.Cars	451.209	438.597	373.219	357.465	305.998	369.819	509.784	593.519	556.280	664.655	417.582
HTA/LCV	246.886	271.811	244.633	237.297	188.025	187.307	251.129	270.920	221.481	188.723	122.489
TOTAL	698.095	710.408	617.852	594.762	494.023	557.126	760.913	864.439	777.761	853.378	540.071
HTA/LCV (%)	35	38	40	40	38	34	33	31	28	22	23

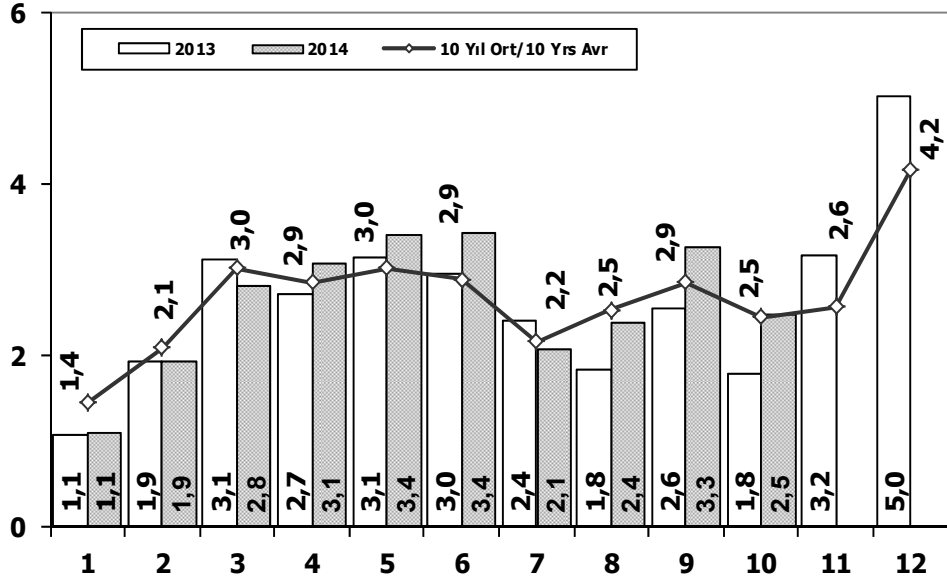
Traktör Pazarı (x1000)

F.Tractor Market (x1000)

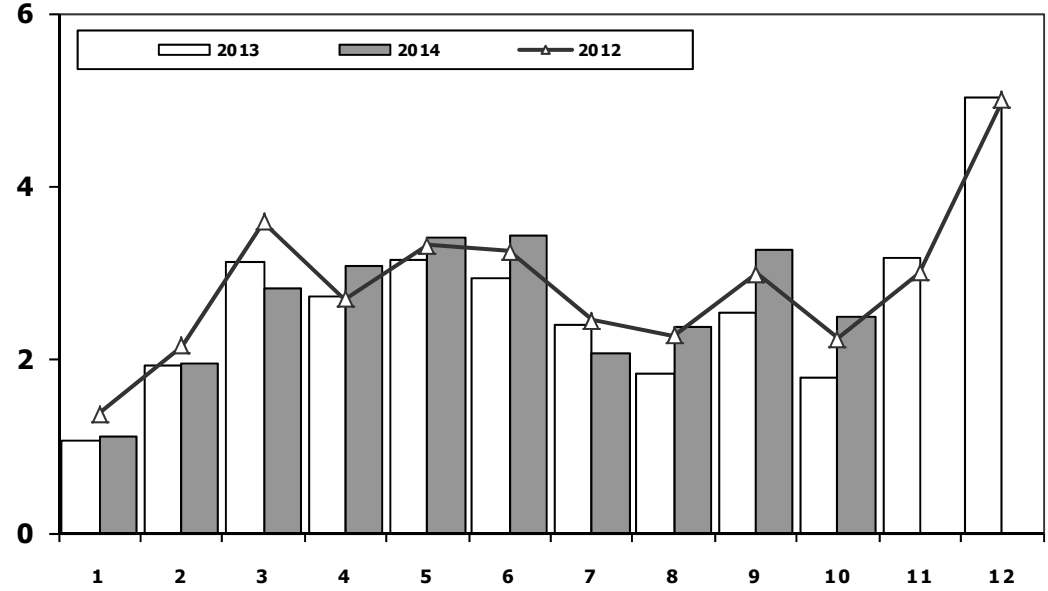


	1	2	3	4	5	6	7	8	9	10	11	12	10 Ay/Mo	Total
2004	1.946	1.874	2.909	3.260	2.863	2.816	1.988	2.209	2.509	1.989	2.198	1.364	24.363	27.925
2005	1.026	1.636	2.001	2.599	2.569	2.780	2.148	2.819	2.567	2.477	2.297	2.089	22.622	27.008
2006	1.578	2.493	2.746	2.841	3.561	2.356	1.685	2.177	2.756	1.915	2.353	1.925	24.108	28.386
2007	1.812	1.778	2.063	2.107	2.266	1.853	1.653	2.065	2.372	2.239	2.231	1.602	20.208	24.041
2008	1.510	1.427	1.933	1.692	1.689	1.592	1.275	924	904	609	707	359	13.555	14.621
2009	267	344	388	638	759	828	741	534	586	765	725	715	5.850	7.290
2010	714	903	1.432	1.653	1.736	1.673	1.613	1.527	2.351	2.787	2.656	2.345	16.389	21.390
2011	2.458	2.610	3.105	3.403	3.847	3.599	2.952	1.559	2.957	2.823	2.603	2.807	29.313	34.723
2012	2.216	2.632	3.223	3.259	3.067	2.821	2.037	1.262	1.648	1.858	1.921	1.579	24.023	27.523
2013	1.633	1.817	2.196	2.070	2.455	2.370	1.955	1.969	2.396	2.510	2.343	2.080	21.371	25.794
2014	1.941	2.256	2.915	2.837	2.723	2.534	2.171	2.265	3.039	2.755	0	0	25.436	25.436

Kamyon Pazarının Analizi (x1000) AYA > 5 Ton Truck Market Analysis (x1000) GVW > 5 Ton



Kamyon Pazarı (x1000) AYA > 5 Ton Truck Market (x1000) GVW > 5 Ton

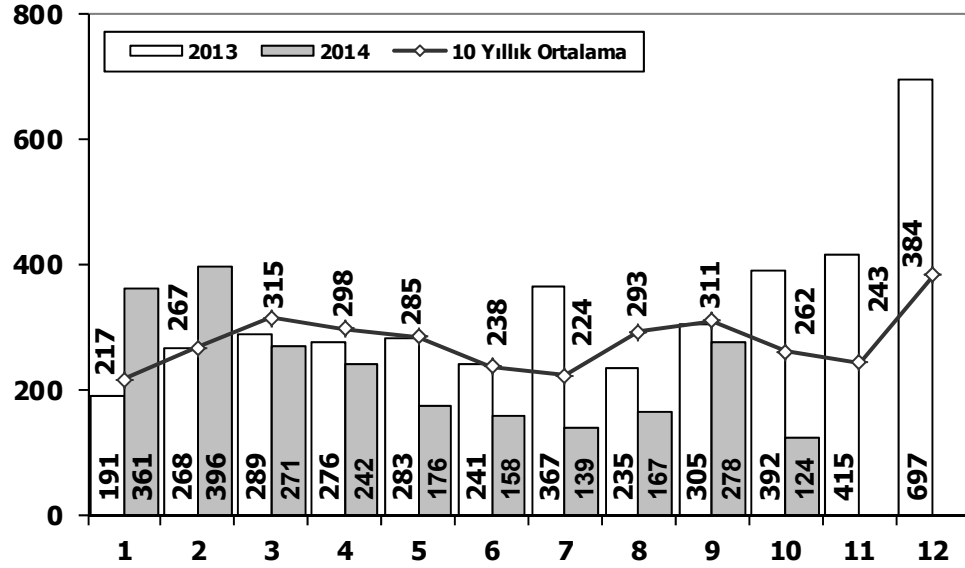


Aylar / Months	10 Yil Ort. 10 Yrs Avr. (x1000)	2014 (x100)	%
1	1,4	1,1	-22,9
2	2,1	1,9	-6,8
3	3,0	2,8	-6,7
4	2,9	3,1	8,1
5	3,0	3,4	12,8
6	2,9	3,4	18,8
7	2,2	2,1	-3,6
8	2,5	2,4	-5,7
9	2,9	3,3	14,7
10	2,5	2,5	1,6
Total	25,3	26,1	2,9

	1	2	3	4	5	6	7	8	9	10	11	12	10 Ay/Mo	Total
2004	1.863	1.949	3.983	3.352	3.651	3.118	2.234	2.897	3.285	2.727	2.629	5.517	29.059	37.205
2005	1.693	2.186	3.288	3.484	3.413	3.147	2.504	4.028	4.043	3.708	3.918	6.570	31.494	41.982
2006	1.767	3.310	4.467	4.180	4.449	3.398	2.472	3.142	3.052	2.926	3.550	5.358	33.163	42.071
2007	1.554	2.055	3.065	2.940	2.865	2.613	2.372	3.145	2.988	2.886	3.258	4.444	26.483	34.185
2008	1.797	2.309	2.621	2.578	2.459	2.526	2.067	2.377	2.390	1.790	1.512	1.834	22.914	26.260
2009	771	759	1.034	1.342	1.355	1.651	1.156	1.205	1.780	866	981	2.015	11.919	14.915
2010	777	968	1.772	1.807	1.966	2.205	2.093	2.446	2.444	3.071	3.136	5.677	19.549	28.362
2011	2.552	3.292	4.418	3.754	3.803	3.749	1.996	2.478	3.081	2.774	3.108	5.787	31.897	40.792
2012	1.375	2.159	3.595	2.697	3.321	3.250	2.450	2.277	2.991	2.244	3.006	5.000	26.359	34.365
2013	1.077	1.931	3.127	2.720	3.145	2.951	2.411	1.845	2.554	1.801	3.173	5.025	23.562	31.760
2014	1.117	1.949	2.818	3.092	3.405	3.438	2.083	2.390	3.281	2.496	0	0	26.069	26.069

Midibüs Pazarının Analizi (7-9 mt / 25-35 Kişilik)

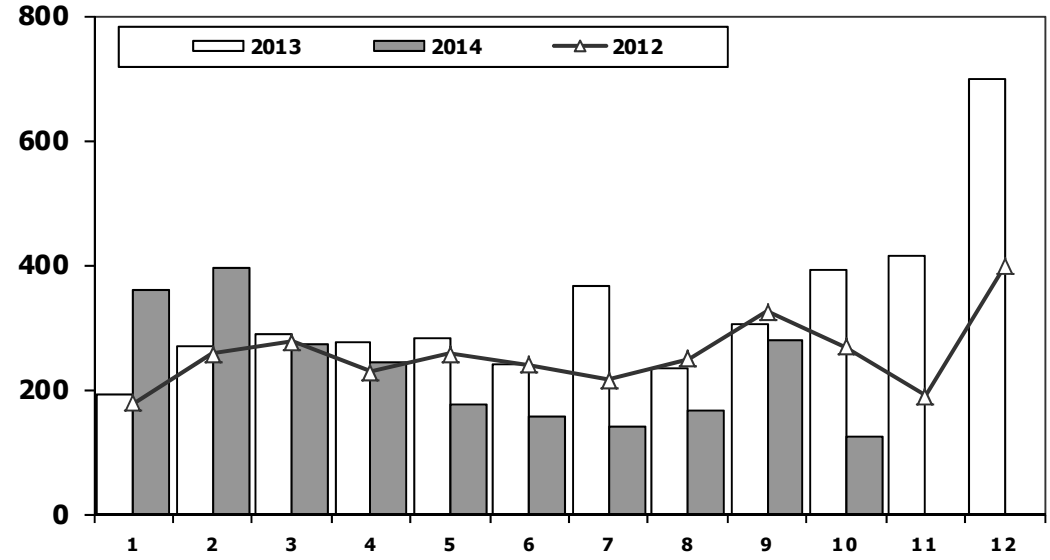
Midibus Market Analysis (7-9 mt / 25-35 Passengers)



Aylar / Months	10 Yıl Ort. / 10 Yrs Avr.	2014	%
1	217	361	67
2	267	396	48
3	315	271	-14
4	298	242	-19
5	285	176	-38
6	238	158	-34
7	224	139	-38
8	293	167	-43
9	311	278	-11
10	262	124	-53
Total	2.711	2.312	-15

Midibüs Pazarı (7-9 mt / 25-35 Kişilik Midibüs)

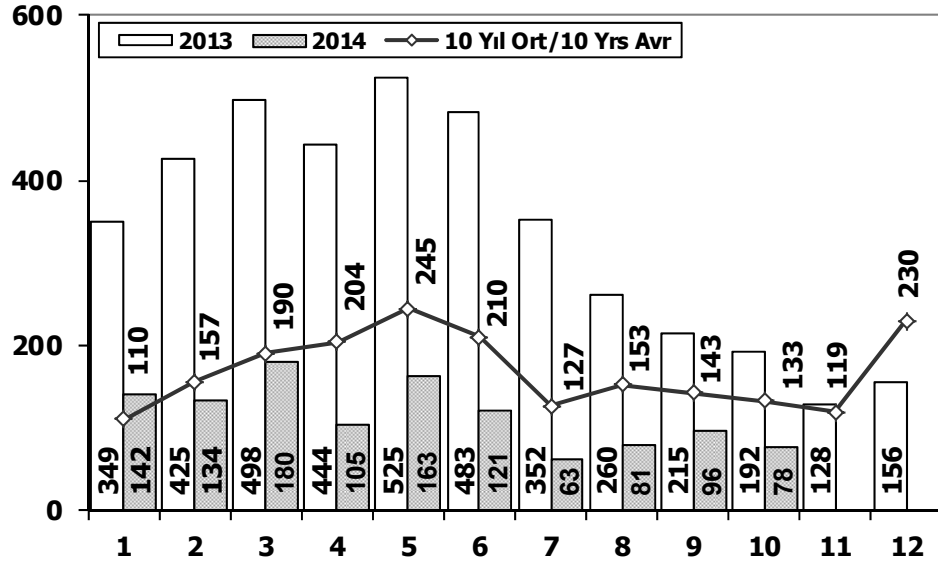
Midibus Market (7-9 mt / 25-35 Passengers)



	1	2	3	4	5	6	7	8	9	10	11	12	10 Ay/Mo	Total
2004	233	226	381	431	524	237	154	531	445	331	319	551	3.493	4.363
2005	182	258	432	393	439	269	252	459	436	329	328	574	3.449	4.351
2006	207	297	406	388	381	266	230	353	322	253	305	401	3.103	3.809
2007	207	272	404	238	302	283	164	365	399	279	283	465	2.913	3.661
2008	391	476	436	512	419	331	368	380	341	352	246	270	4.006	4.522
2009	154	124	160	220	174	198	160	175	168	143	206	323	1.676	2.205
2010	155	131	185	167	140	138	129	246	236	206	202	437	1.733	2.372
2011	138	195	294	316	280	258	211	305	301	276	260	270	2.574	3.104
2012	179	257	277	229	257	239	216	249	325	269	189	398	2.497	3.084
2013	191	268	289	276	283	241	367	235	305	392	415	697	2.847	3.959
2014	361	396	271	242	176	158	139	167	278	124	0	0	2.312	2.312

Otobüs Pazarının Analizi

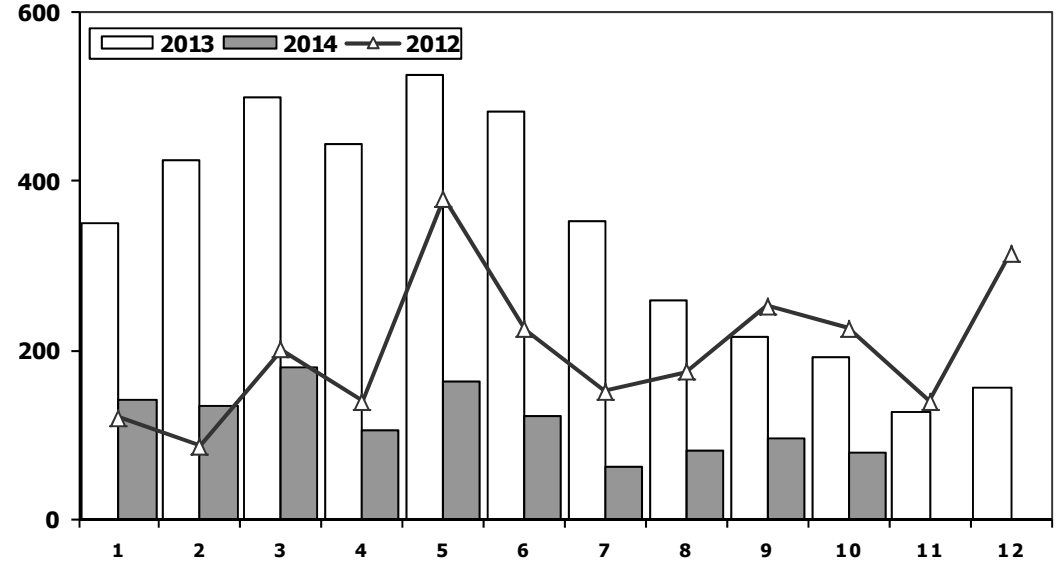
Bus Market Analysis



Aylar / Months	10 Yil Ort. / 10 Yrs Avr.	2014	%
1	110	142	29
2	157	134	-14
3	190	180	-5
4	204	105	-49
5	245	163	-33
6	210	121	-42
7	127	63	-50
8	153	81	-47
9	143	96	-33
10	133	78	-41
Total	1.671	1.163	-30

Otobüs Pazarı

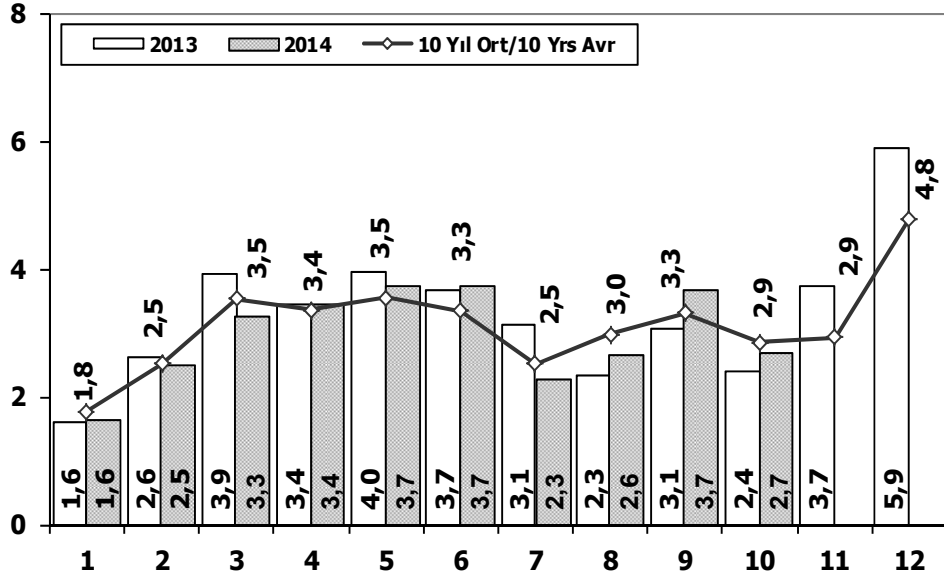
Bus Market



	1	2	3	4	5	6	7	8	9	10	11	12	10 Ay/Mo	Total
2004	173	135	215	198	169	143	103	118	90	95	89	78	1.439	1.606
2005	65	81	75	152	174	167	76	149	147	116	109	485	1.202	1.796
2006	78	101	165	247	230	184	84	112	146	84	176	176	1.431	1.783
2007	72	191	129	89	150	91	91	103	110	168	163	241	1.194	1.598
2008	77	85	108	176	151	212	101	165	166	121	141	236	1.362	1.739
2009	100	221	226	224	167	186	85	103	58	75	53	125	1.445	1.623
2010	23	42	102	159	145	151	151	189	107	99	106	251	1.168	1.525
2011	76	198	218	306	364	283	113	189	132	169	170	314	2.048	2.532
2012	120	87	201	139	379	225	152	174	252	226	140	315	1.955	2.410
2013	349	425	498	444	525	483	352	260	215	192	128	156	3.743	4.027
2014	142	134	180	105	163	121	63	81	96	78	0	0	1.163	1.163

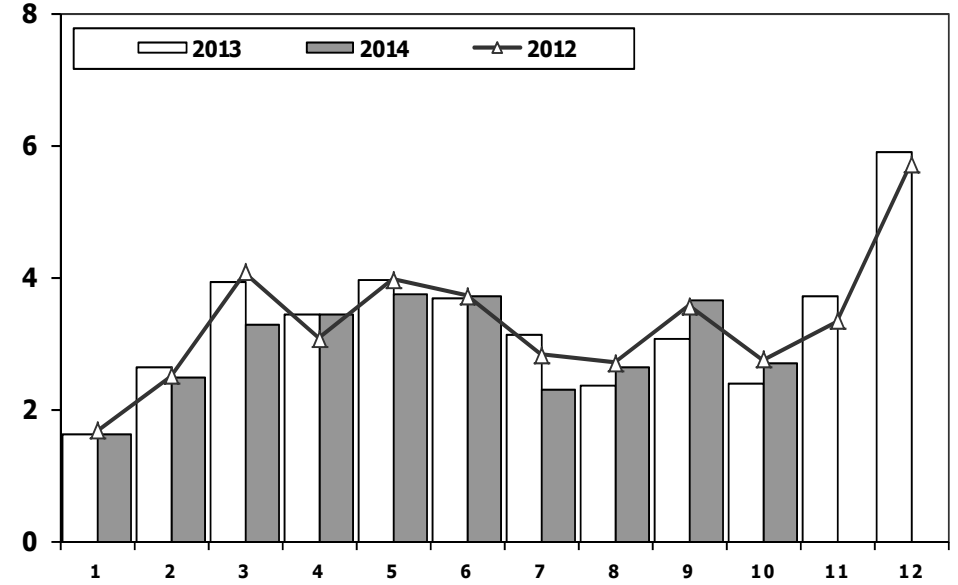
Ağır Ticari Araç Pazarının Analizi (x1000)

HCV Market Analysis (x1000)



Ağır Ticari Araç Pazarı (x1000)

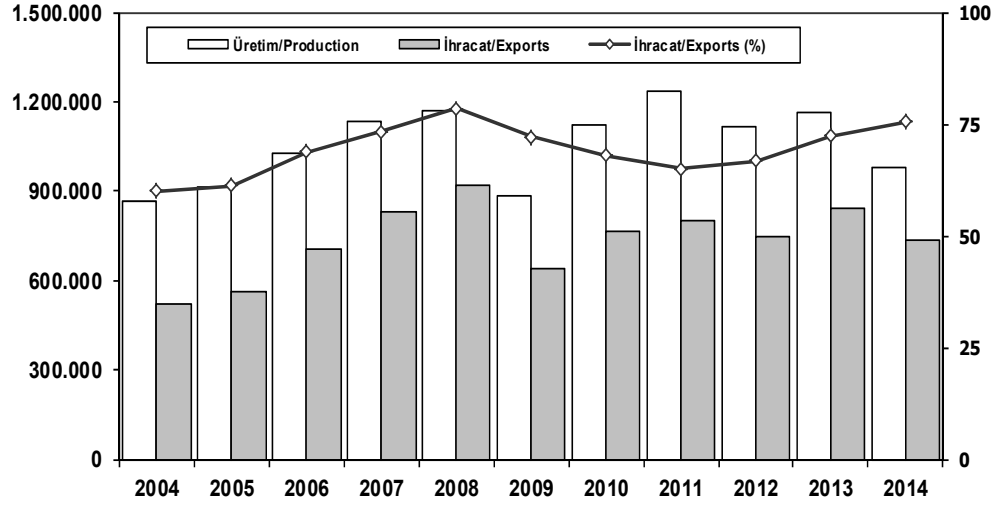
HCV Market (x1000)



Aylar / Months	10 Yil Ort. 10 Yrs Avr. (x1000)	2013 (x1000)	%
1	1,8	1,6	-8,7
2	2,5	2,5	-1,5
3	3,5	3,3	-7,3
4	3,4	3,4	2,3
5	3,5	3,7	5,5
6	3,3	3,7	11,2
7	2,5	2,3	-9,0
8	3,0	2,6	-11,5
9	3,3	3,7	10,3
10	2,9	2,7	-5,4
Total	29,7	29,5	-0,6

	1	2	3	4	5	6	7	8	9	10	11	12	10 Ay/Mo	Total
2004	2.269	2.310	4.579	3.981	4.344	3.498	2.491	3.546	3.820	3.153	3.037	6.146	33.991	43.174
2005	1.940	2.525	3.795	4.029	4.026	3.583	2.832	4.636	4.626	4.153	4.355	7.629	36.145	48.129
2006	2.052	3.708	5.038	4.815	5.060	3.848	2.786	3.607	3.520	3.263	4.031	5.935	37.697	47.663
2007	1.833	2.518	3.598	3.267	3.317	2.987	2.627	3.613	3.497	3.333	3.704	5.150	30.590	39.444
2008	2.265	2.870	3.165	3.266	3.029	3.069	2.536	2.922	2.897	2.263	1.899	2.340	28.282	32.521
2009	1.025	1.104	1.420	1.786	1.696	2.035	1.401	1.483	2.006	1.084	1.240	2.463	15.040	18.743
2010	955	1.141	2.059	2.133	2.251	2.494	2.373	2.881	2.787	3.376	3.444	6.365	22.450	32.259
2011	2.766	3.685	4.930	4.376	4.447	4.290	2.320	2.972	3.514	3.219	3.538	6.371	36.519	46.428
2012	1.674	2.503	4.073	3.065	3.957	3.714	2.818	2.700	3.568	2.739	3.335	5.713	30.811	39.859
2013	1.617	2.624	3.914	3.440	3.953	3.675	3.130	2.340	3.074	2.385	3.716	5.878	30.152	39.746
2014	1.620	2.479	3.269	3.439	3.744	3.717	2.285	2.638	3.655	2.698	0	0	29.544	29.544

İhracat/Üretim (2004-2014) Exports/Production (2004-2014)



	2004	2005	2006	2007	2008	2009	2010	2011	2012	2013	2014
Üretim/Production	864.073	916.062	1.026.427	1.132.951	1.171.917	884.466	1.124.982	1.234.637	1.115.233	1.166.043	977.511
İhracat/Exports	518.595	561.078	706.402	829.879	920.763	637.855	763.670	801.112	745.354	843.467	737.039
İhracat/Exports (%)	60	61	69	73	79	72	68	65	67	72	75

Taşıt Araçları İhracatı Motor Vehicle Exports

SEKTÖR/SECTOR	2012	2013	2013		2013/2014 (%)
			10 Ay-10 Mo		
OTOMOBİL/ P.Cars	412.991	484.504	394.399	478.352	21
TİCARİ ARAÇLAR/ CV	316.932	343.967	289.280	244.166	-16
* Kamyonet/Pick-Up	292.601	300.765	254.816	218.342	-14
* Minibüs/Minibus	16.429	34.664	28.025	20.710	-26
* Kamyon/Truck	2.682	3.055	2.230	911	-59
* Midibüs/Midibus	1.173	985	760	651	-14
* Otobüs/Bus	4.047	4.498	3.449	3.552	3
TAŞIT ARAÇLARI /MV TOTAL	729.923	828.471	683.679	722.518	6
TRAKTÖR/F.TRACTOR	15.431	14.996	11.832	14.521	23
TOTAL	745.354	843.467	695.511	737.039	6

Otomotiv Ana ve Yan Sanayii İhracatı (ABD \$) CBU and CKD Exports - \$

SEKTÖR/SECTOR	2011 Toplam (Total)	2012 Toplam (Total)	2013 Toplam (Total)	2013		2014/2013 (%)
				10 Ay (10 Months)		
Toplam Yan Sanayi/Total Component Industry	6.595.662.583	8.307.826.870	8.223.513.061	7.496.831.652	8.077.665.818	8
İç ve Dış Lastik / Tyres	988.990.821	1.373.205.546	1.200.828.712	953.139.839	986.788.305	4
Emniyet Camı / Safety Glasses	107.203.983	120.041.467	120.710.174	110.831.549	121.274.215	9
Motor (Engine)	305.490.804	273.896.369	272.085.582	267.890.419	145.240.290	-46
Akümülatör / Batteries	186.504.496	232.611.079	250.345.945	241.158.889	232.494.438	-4
Diğer Aksam ve Parça / Spare Parts&Components	5.007.472.478	6.308.072.409	6.379.542.648	5.923.810.956	6.591.868.570	11
Toplam Ana Sanayi/Total Vehicle Industry	10.855.476.447	12.128.522.618	11.101.346.096	10.143.265.147	11.001.391.583	8
Otobüs / Bus	744.935.284	929.372.870	856.072.335	714.372.466	785.044.347	10
Midibüs-Minibüs / Minibus- Minibus	120.378.674	145.199.034	161.806.275	121.794.495	72.610.431	-40
Otomobil (P. Cars)	6.217.404.551	6.541.969.418	6.067.964.588	5.672.608.723	6.107.956.255	8
Kamyon-Kamyonet/HCV-LCV	3.363.101.038	4.034.772.621	3.433.318.136	3.141.830.261	3.446.559.172	10
Çekici/Truck-Tractor	145.710.283	116.912.332	195.260.385	173.864.014	202.029.406	16
Römork ve Yarı Römork/Trailer-Semi Trailer	72.145.150	147.247.613	71.336.635	59.509.675	32.411.737	-46
Tarım Traktörü/Farm Tractor	191.801.467	213.048.730	315.587.742	259.285.513	354.780.234	37
Toplam/Total	17.451.139.030	20.436.349.488	19.324.859.157	17.640.096.799	19.079.057.401	8

Kaynak: Otomotiv Endüstrisi İhracatçıları Birliği

Firma Bazında İhracat (Adet)
Export Of member Companies (Unit)

FİRMALAR Companies	2012	2013	Ocak-Ekim 10 Months	
			2013	2014
OYAK RENAULT	227.162	266.508	222.738	209.246
HYUNDAI ASSAN	67.453	85.500	64.129	145.667
TOFAŞ	154.068	160.309	133.082	115.917
TOYOTA	63.549	86.908	69.486	94.871
FORD OTOSAN	191.149	208.722	177.030	150.708
TÜRK TRAKTÖR	14.572	14.402	11.376	13.458
HONDA TÜRKİYE	7.959	2.121	1.771	1.470
M. BENZ TÜRK	4.054	5.331	4.131	2.605
MAN TÜRKİYE	885	898	694	787
A.I.O.S.	943	770	611	541
HATTAT TARIM	859	594	456	1.063
TEMSA GLOBAL	856	663	552	268
KARSAN	10.994	10.120	9.030	28
OTOKAR	510	620	424	410
BMC	341	1	1	0
GENEL TOPLAM	745.354	843.467	695.511	737.039

Kaynak: OSD

Sektör Bazında İhracat (\$)
Exports on Sectorial Basis

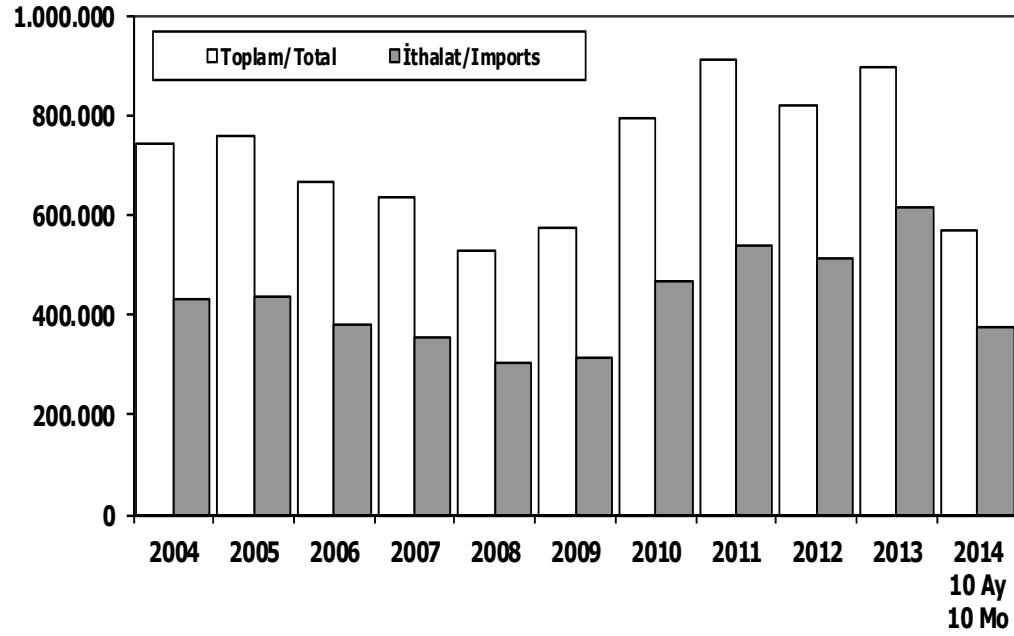
SEKTÖRLER	EKİM			OCAK-EKİM			
	2013	2014	2014/2013 (%)	2013	2014	2014/2013 (%)	2014 (%) Pay
Otomotiv Endüstrisi	1.749.418	1.713.229	-2,1	17.463.363	18.642.982	6,8	14,2
Hazır giyim ve Konfeksiyon	1.334.106	1.503.680	12,7	14.281.164	15.875.777	11,2	12,1
Kimyevi Maddeler ve Mamulleri	1.394.133	1.508.600	8,2	14.266.090	14.904.124	4,5	11,4
Çelik	1.044.197	1.052.746	0,8	11.500.330	11.160.314	-3,0	8,5
Elektrik Elektronik ve Hizmet	1.054.290	1.053.840	0,0	9.452.160	9.977.327	5,6	7,6
Tekstil ve Hammaddeleri	707.834	758.768	7,2	6.912.631	7.484.172	8,3	5,7
Demir ve Demir Dışı Metaller	534.888	564.001	5,4	5.605.997	5.953.517	6,2	4,5
İhracatçı Birlikleri Kaydından Muaf İhracat				5.541.781	5.726.233	3,3	4,4
Hububat, Bakliyat, Yağlı Tohumlar ve Mam.	533.747	564.441	5,8	5.239.866	5.465.294	4,3	4,2
Makine ve Aksamları	450.316	496.436	10,2	4.690.931	5.022.848	7,1	3,8
Madencilik Ürünleri	384.744	348.182	-9,5	4.174.997	3.893.638	-6,7	3,0
Ağaç Mamulleri ve Orman Ürünleri	363.789	351.541	-3,4	3.565.760	3.732.170	4,7	2,8
İklimlendirme Sanayii	362.202	350.973	-3,1	3.419.034	3.716.605	8,7	2,8
Çimento Cam Seramik ve Toprak Ürünleri	241.268	245.980	2,0	2.641.086	2.653.247	0,5	2,0
Mücevher	193.818	330.227	70,4	1.824.461	2.200.497	20,6	1,7
Hali	193.554	207.732	7,3	1.762.905	1.915.631	8,7	1,5
Su Ürünleri ve Hayvansal Mamuller	172.494	181.394	5,2	1.609.603	1.874.781	16,5	1,4
Yaş Meyve ve Sebze	217.580	212.861	-2,2	1.651.917	1.719.661	4,1	1,3
Fındık ve Mamulleri	181.405	267.756	47,6	1.400.473	1.707.539	21,9	1,3
Deri ve Deri Mamulleri	161.907	144.469	-10,8	1.544.990	1.540.274	-0,3	1,2
Savunma ve Havaçılık Sanayii	129.842	120.643	-7,1	1.116.134	1.327.092	18,9	1,0
Meyve Sebze Mamulleri	122.192	125.859	3,0	1.064.761	1.169.175	9,8	0,9
Kuru Meyve ve Mamulleri	152.873	194.862	27,5	1.142.094	1.165.173	2,0	0,9
Gemi ve Yat	47.933	175.947	267,1	1.009.152	1.052.933	4,3	0,8
Tütün ve Mamulleri	50.116	95.957	91,5	764.522	905.321	18,4	0,7
Zeytin ve Zeytinyağı	23.072	14.896	-35,4	386.746	187.957	-51,4	0,1
Diğer Sanayi Ürünleri	6.548	9.312	42,2	89.178	95.300	6,9	0,1
Süs Bitkileri	4.637	4.373	-5,7	63.627	71.205	11,9	0,1
T O P L A M	11.812.904	12.598.705	6,7	124.185.752	131.140.791	5,6	100,0

Kaynak: TİM

First 3 Sectors:

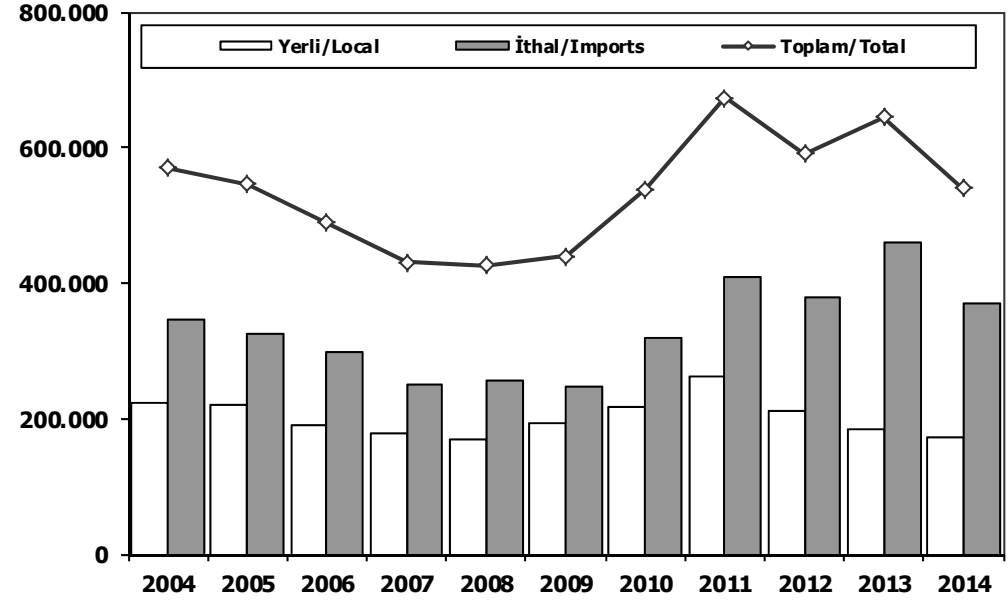
- 1- Transport Vehicle and Component Industry
- 2- Ready Wear and Confection
- 3-Chemical Articles and Products

Toplam Pazar (Otomobil+T.Araç) Total Market (P.Cars+C.V)



	2004	2005	2006	2007	2008	2009	2010	2011	2012	2013	2013 10 Ay 10 Mo	2014 10 Ay 10 Mo
Toplam/Total	741.269	758.537	665.515	634.206	526.544	575.869	793.172	910.867	817.620	893.124	674.511	569.615
İthalat/Imports	430.204	436.033	382.460	355.752	306.087	313.921	465.408	538.532	511.694	615.609	465.772	376.293
İthalat/Imports (%)	58	57	57	56	58	55	59	59	63	69	69	66

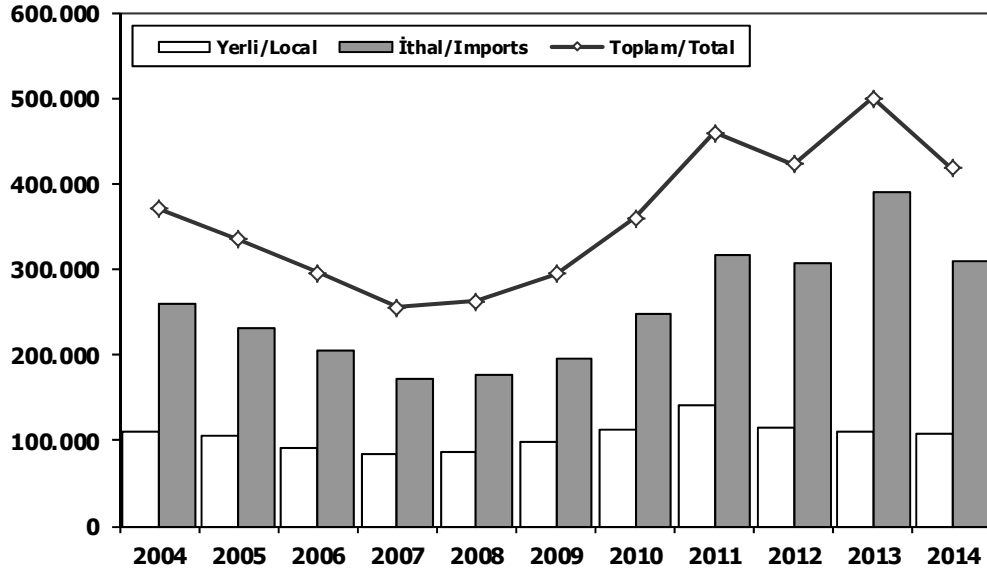
Hafif Araçlar Pazarı (2004-2014 Ocak-Ekim) LV Market (2004-2014 January-October)



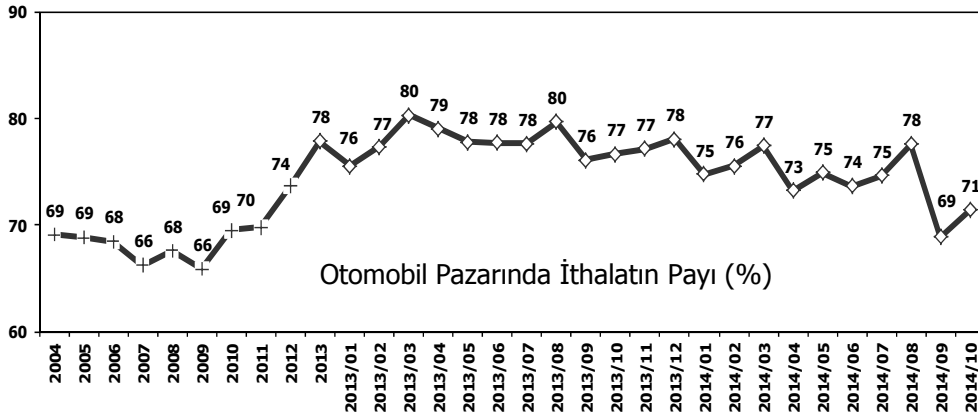
	2004	2005	2006	2007	2008	2009	2010	2011	2012	2013	2014
Yerli/Local	223.889	219.514	190.605	178.978	169.366	192.748	218.506	263.316	211.642	185.428	171.421
İthal/Imports	346.082	326.321	298.593	251.545	256.326	247.493	320.076	409.556	379.009	458.931	368.650
Toplam/Total	569.971	545.835	489.198	430.523	425.692	440.241	538.582	672.872	590.651	644.359	540.071
İthalat/Imports (%)	61	60	61	58	60	56	59	61	64	71	68

Otomobil Pazarı (2004-2014 Ocak-Ekim)

P.Cars Market (2004-2014 January-October)

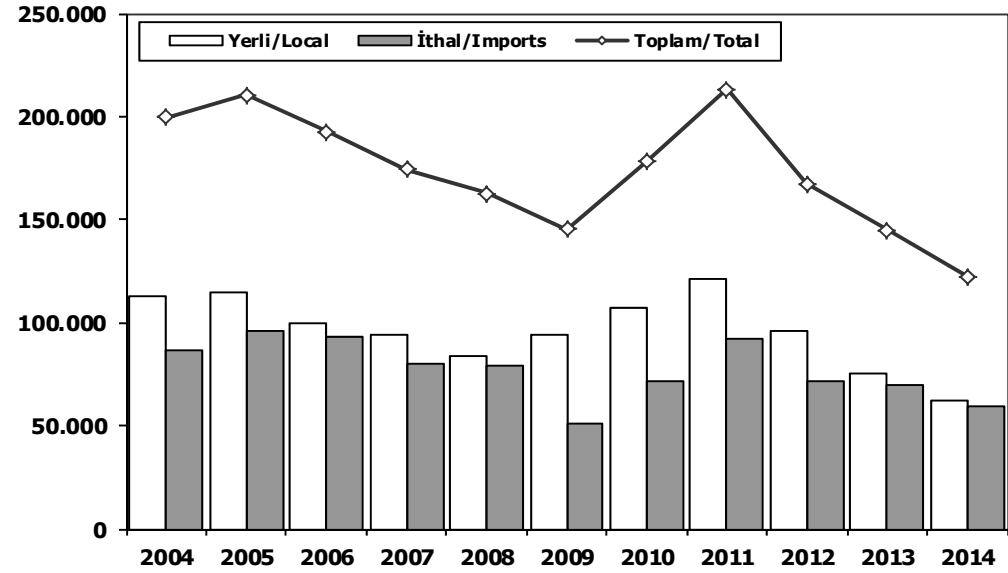


	2004	2005	2006	2007	2008	2009	2010	2011	2012	2013	2014
Yerli/Local	111.335	104.764	91.004	84.850	85.708	98.793	111.597	142.257	115.922	110.263	108.721
İthal/Imports	259.130	230.545	205.387	171.227	177.210	196.067	248.665	317.354	307.135	389.076	308.861
Toplam/Total	370.465	335.309	296.391	256.077	262.918	294.860	360.262	459.611	423.057	499.339	417.582
İthalat/Imports (%)	70	69	69	67	67	66	69	69	73	78	74

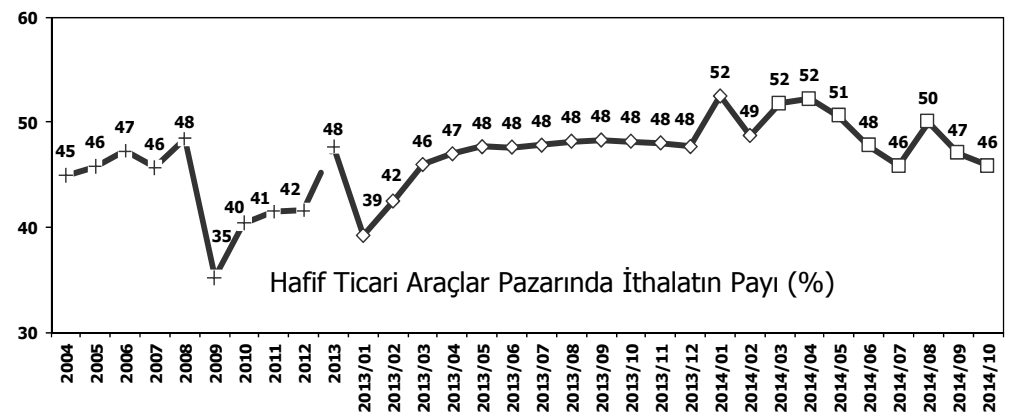


Hafif Ticari Araçlar Pazarı (2004-2014 Ocak-Ekim)

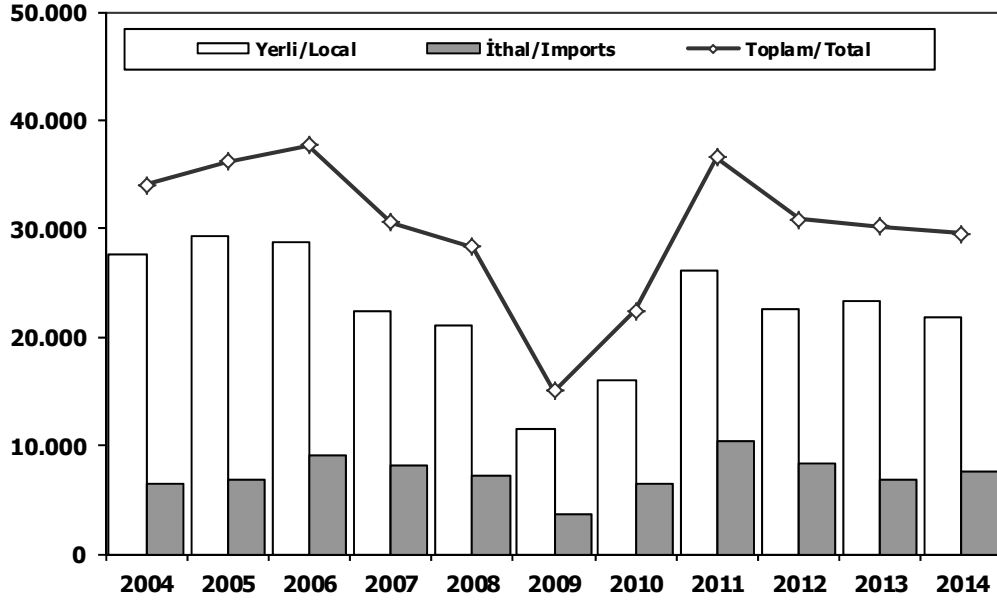
Light Commercial Vehicle Market (2004-2014 January-October)



	2004	2005	2006	2007	2008	2009	2010	2011	2012	2013	2014
Yerli/Local	112.554	114.750	99.601	94.128	83.658	93.955	106.909	121.059	95.720	75.165	62.700
İthal/Imports	86.952	95.776	93.206	80.318	79.116	51.426	71.411	92.202	71.874	69.855	59.789
Toplam/Total	199.506	210.526	192.807	174.446	162.774	145.381	178.320	213.261	167.594	145.020	122.489
İthalat/Imports (%)	44	45	48	46	49	35	40	43	43	48	49

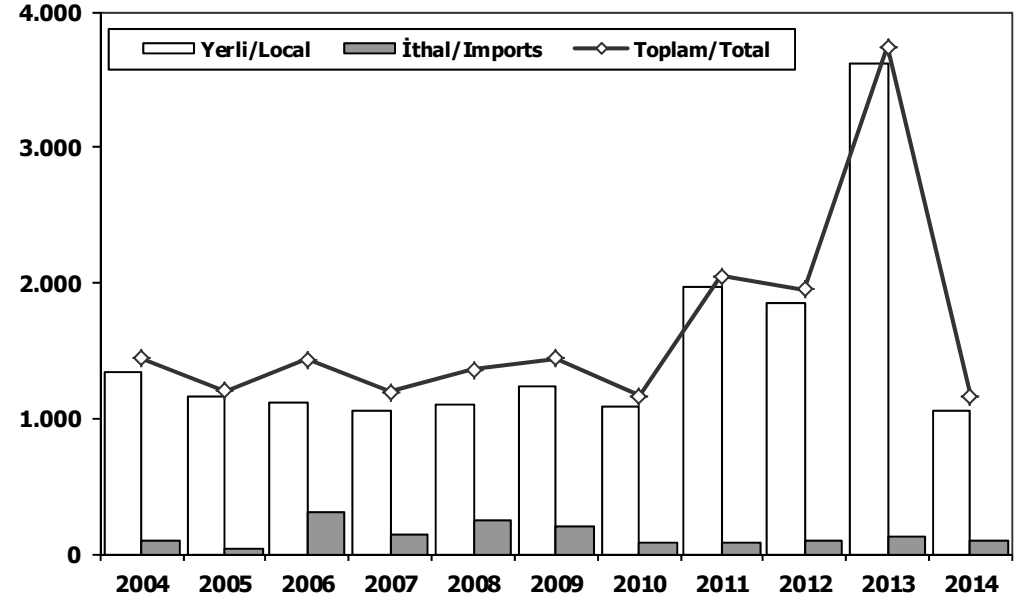


Ağır Ticari Araçlar Pazarı (2004-2014 Ocak-Ekim) HCV Market (2004-2014 January-October)



	2004	2005	2006	2007	2008	2009	2010	2011	2012	2013	2014
Yerli/Local	27.598	29.325	28.706	22.448	21.105	11.465	15.932	26.209	22.568	23.311	21.901
İthal/Imports	6.393	6.820	8.991	8.142	7.177	3.575	6.518	10.310	8.243	6.841	7.643
Toplam/Total	33.991	36.145	37.697	30.590	28.282	15.040	22.450	36.519	30.811	30.152	29.544
İthalat/Imports (%)	19	19	24	27	25	24	29	28	27	23	26

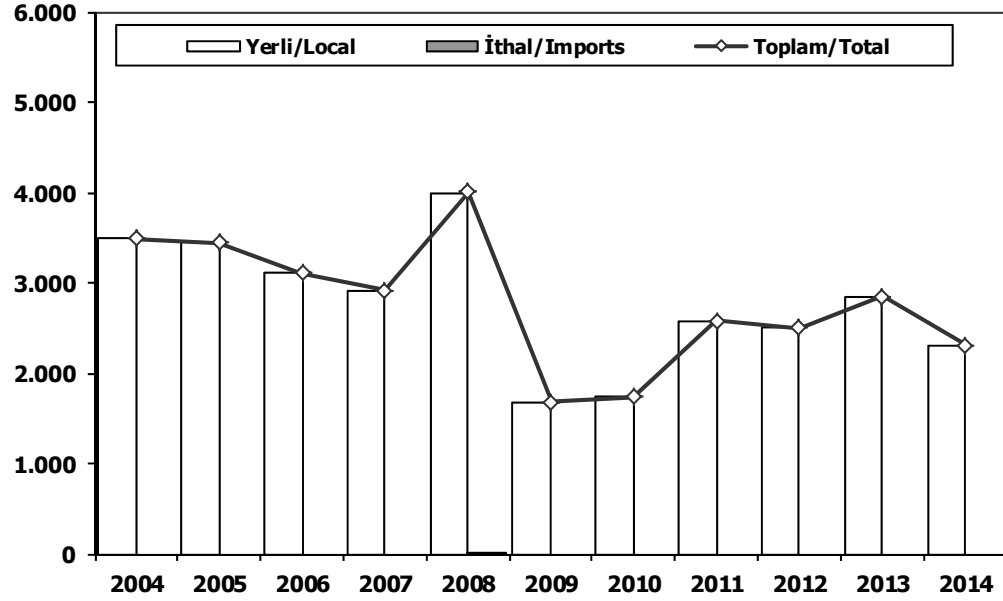
Otobüs Pazarı (2004-2014 Ocak-Ekim) Bus Market (2004-2014 January-October)



	2004	2005	2006	2007	2008	2009	2010	2011	2012	2013	2014
Yerli/Local	1.341	1.160	1.119	1.057	1.108	1.243	1.090	1.973	1.856	3.618	1.063
İthal/Imports	98	42	312	137	254	202	78	75	99	125	100
Toplam/Total	1.439	1.202	1.431	1.194	1.362	1.445	1.168	2.048	1.955	3.743	1.163
İthalat/Imports (%)	7	3	22	11	19	14	7	4	5	3	9

Midibüs Pazarı (2004-2014 Ocak-Ekim) (7-9 mt/25-35 Kişilik)

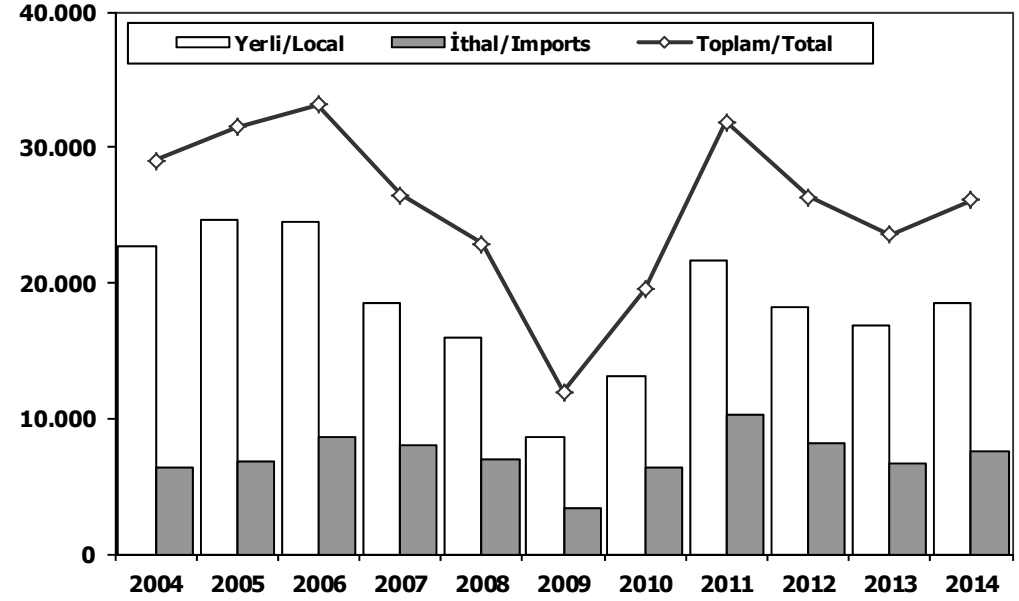
Midibus Market (2004-2014 January-October) (7-9 mt/25-35 Passengers)



	2004	2005	2006	2007	2008	2009	2010	2011	2012	2013	2014
Yerli/Local	3.493	3.449	3.103	2.913	3.995	1.676	1.733	2.574	2.497	2.847	2.312
İthal/Imports	0	0	0	0	11	0	0	0	0	0	0
Toplam/Total	3.493	3.449	3.103	2.913	4.006	1.676	1.733	2.574	2.497	2.847	2.312
İthalat/Imports (%)	0	0	0	0	0	0	0	0	0	0	0

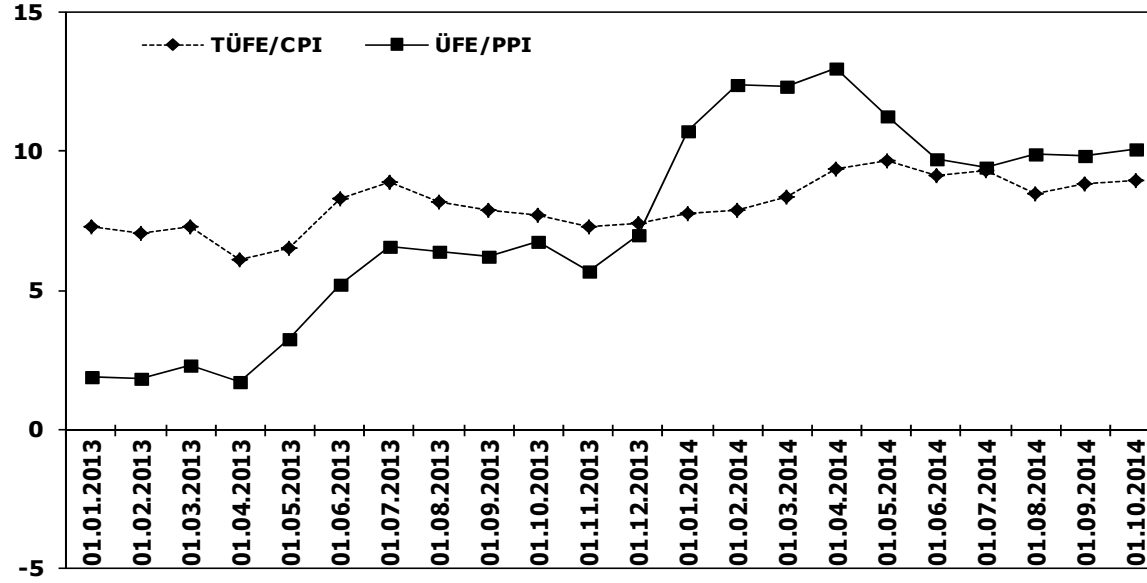
Kamyon Pazarı (2004-2014 Ocak-Ekim)

Truck Market (2004-2014 January-October)

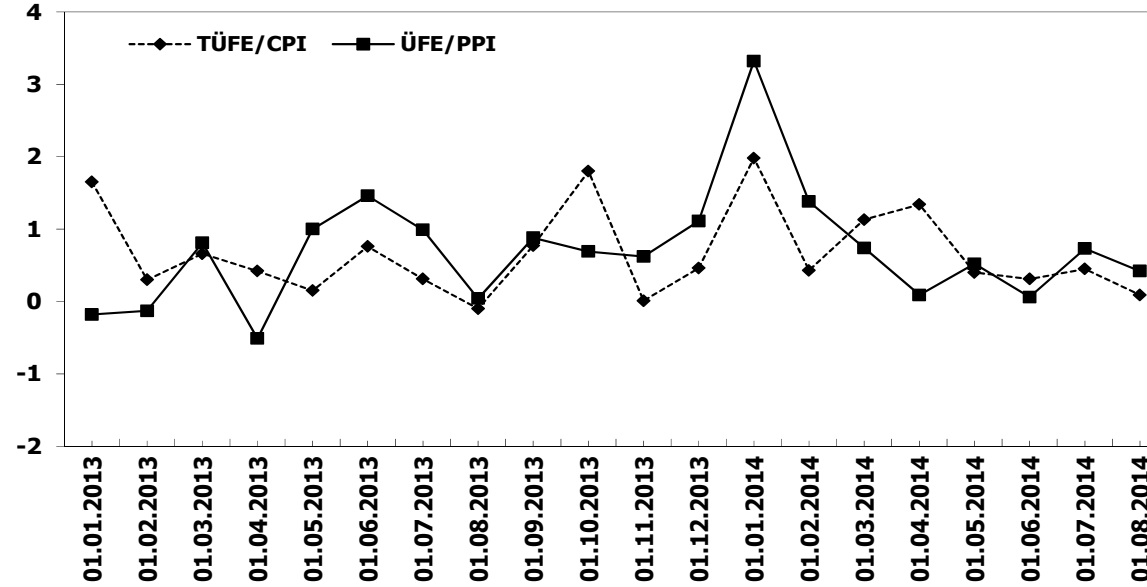


	2004	2005	2006	2007	2008	2009	2010	2011	2012	2013	2014
Yerli/Local	22.764	24.716	24.484	18.478	16.002	8.546	13.109	21.662	18.215	16.846	18.526
İthal/Imports	6.295	6.778	8.679	8.005	6.912	3.373	6.440	10.235	8.144	6.716	7.543
Toplam/Total	29.059	31.494	33.163	26.483	22.914	11.919	19.549	31.897	26.359	23.562	26.069
İthalat/Imports (%)	22	22	26	30	30	28	33	32	31	29	29

TÜFE ve ÜFE'nin Yıllık Değişimi (%) CPI and PPI Yearly Changes (%)



TÜFE ve ÜFE'nin Aylık Değişimi (%) CPI and PPI Monthly Changes (%)



2014 Otomotiv Sanayii Dış Satışlar 2014 Automotive Industry Exports Sales

TIPLER-Types	Ocak January	Şubat February	Mart March	Nisan April	Mayıs May	Haziran June	Temmuz July	Ağustos August	Eylül September	Ekim October	Kasım November	Aralık December	TOPLAM Total
Otomobil	35.925	46.549	53.966	55.913	52.296	54.886	53.125	26.433	54.468	44.791	0	0	478.352
OTOMOBİL-Pass. Car	35.925	46.549	53.966	55.913	52.296	54.886	53.125	26.433	54.468	44.791	0	0	478.352
TİCARİ ARAÇ	15.499	22.600	28.280	26.961	29.622	29.842	26.562	11.514	28.890	24.396	0	0	244.166
* KAMYONET-Pick Up	14.122	20.532	25.507	24.027	26.654	27.200	24.154	9.535	25.529	21.082	0	0	218.342
* KAMYON-Truck	61	94	71	73	122	106	157	71	79	77	0	0	911
* MIDİBÜS-Midibus	54	20	126	49	79	126	14	89	23	71	0	0	651
* MINİBÜS-Minibus	1.088	1.617	2.174	2.429	2.397	1.997	1.811	1.454	2.883	2.860	0	0	20.710
* OTOBÜS-Bus	174	337	402	383	370	413	426	365	376	306	0	0	3.552
Traktör	864	1.332	1.335	1.198	1.761	1.819	1.522	1.256	1.816	1.618	0	0	14.521
TRAKTÖR-F. Tractor	864	1.332	1.335	1.198	1.761	1.819	1.522	1.256	1.816	1.618	0	0	14.521
TOPLAM-Total	52.288	70.481	83.581	84.072	83.679	86.547	81.209	39.203	85.174	70.805	0	0	737.039

Otomobil													
FİRMALAR-Companies	Ocak January	Şubat February	Mart March	Nisan April	Mayıs May	Haziran June	Temmuz July	Ağustos August	Eylül September	Ekim October	Kasım November	Aralık December	TOPLAM Total
FORD OTOSAN	0	15	17	175	1.746	1.426	1.470	153	479	372	0	0	5.853
HONDA TÜRKİYE	147	63	0	240	90	275	295	61	107	192	0	0	1.470
HYUNDAI ASSAN	12.425	9.200	15.000	17.000	17.245	17.170	15.700	11.300	17.377	13.250	0	0	145.667
OYAK RENAULT	12.579	24.852	24.495	24.941	20.480	24.089	22.191	9.058	25.006	21.555	0	0	209.246
TOFAŞ	1.885	2.135	3.083	2.380	2.287	2.749	2.090	620	2.201	1.815	0	0	21.245
TOYOTA	8.889	10.284	11.371	11.177	10.448	9.177	11.379	5.241	9.298	7.607	0	0	94.871
TOPLAM-Total	35.925	46.549	53.966	55.913	52.296	54.886	53.125	26.433	54.468	44.791	0	0	478.352

Kamyonet													
FİRMALAR-Companies	Ocak January	Şubat February	Mart March	Nisan April	Mayıs May	Haziran June	Temmuz July	Ağustos August	Eylül September	Ekim October	Kasım November	Aralık December	TOPLAM Total
FORD OTOSAN	5.035	10.950	14.732	14.368	15.771	16.000	13.203	6.829	14.425	12.279	0	0	123.592
KARŞAN	6	0	0	0	2	1	0	0	0	0	0	0	9
OTOKAR	0	0	0	0	10	39	0	14	0	6	0	0	69
TOFAŞ	9.081	9.582	10.775	9.659	10.871	11.160	10.951	2.692	11.104	8.797	0	0	94.672
TOPLAM-Total	14.122	20.532	25.507	24.027	26.654	27.200	24.154	9.535	25.529	21.082	0	0	218.342

Minibüs													
FİRMALAR-Companies	Ocak January	Şubat February	Mart March	Nisan April	Mayıs May	Haziran June	Temmuz July	Ağustos August	Eylül September	Ekim October	Kasım November	Aralık December	TOPLAM Total
FORD OTOSAN	1.088	1.617	2.173	2.429	2.387	1.996	1.807	1.449	2.879	2.860	0	0	20.685
KARŞAN	0	0	1	0	0	1	4	5	4	0	0	0	15
OTOKAR	0	0	0	0	10	0	0	0	0	0	0	0	10
TOPLAM-Total	1.088	1.617	2.174	2.429	2.397	1.997	1.811	1.454	2.883	2.860	0	0	20.710

Kamyon													
FİRMALAR-Companies	Ocak January	Şubat February	Mart March	Nisan April	Mayıs May	Haziran June	Temmuz July	Ağustos August	Eylül September	Ekim October	Kasım November	Aralık December	TOPLAM Total
FORD OTOSAN	32	55	67	53	91	81	93	30	30	46	0	0	578
KARŞAN	0	0	0	1	0	0	0	0	0	0	0	0	1
M. BENZ TÜRK	29	39	4	19	31	25	64	41	49	31	0	0	332
TOPLAM-Total	61	94	71	73	122	106	157	71	79	77	0	0	911

Midibüs													
FİRMALAR-Companies	Ocak January	Şubat February	Mart March	Nisan April	Mayıs May	Haziran June	Temmuz July	Ağustos August	Eylül September	Ekim October	Kasım November	Aralık December	TOPLAM Total
A.I.O.S.	52	20	108	44	64	71	9	65	5	43	0	0	481
OTOKAR	2	0	17	5	15	55	5	24	18	28	0	0	169
TEMSA GLOBAL	0	0	1	0	0	0	0	0	0	0	0	0	1
TOPLAM-Total	54	20	126	49	79	126	14	89	23	71	0	0	651

Otobüs													
FİRMALAR-Companies	Ocak January	Şubat February	Mart March	Nisan April	Mayıs May	Haziran June	Temmuz July	Ağustos August	Eylül September	Ekim October	Kasım November	Aralık December	TOPLAM Total
A.I.O.S.	0	0	34	1	0	0	5	1	5	14	0	0	60
KARŞAN	0	0	0	0	0	0	3	0	0	0	0	0	3
M. BENZ TÜRK	86	193	255	233	282	311	278	284	230	121	0	0	2.273
MAN TÜRKİYE	66	90	76	116	70	75	69	41	91	93	0	0	787
OTOKAR	1	3	7	9	12	14	38	13	16	49	0	0	162
TEMSA GLOBAL	21	51	30	24	6	13	33	26	34	29	0	0	267
TOPLAM-Total	174	337	402	383	370	413	426	365	376	306	0	0	3.552

Traktör													
FİRMALAR-Companies	Ocak January	Şubat February	Mart March	Nisan April	Mayıs May	Haziran June	Temmuz July	Ağustos August	Eylül September	Ekim October	Kasım November	Aralık December	TOPLAM Total
HATTAT TARIM	42	90	86	130	139	110	109	86	161	110	0	0	1.063
TÜRK TRAKTÖR	822	1.242	1.249	1.068	1.622	1.709	1.413	1.170	1.655	1.508	0	0	13.458
TOPLAM-Total	864	1.332	1.335	1.198	1.761	1.819	1.522	1.256	1.816	1.618	0	0	14.521

2014 Yılı İthal Hafif Araç Satışları 2014 Light Vehicles Import Sales

	2013 TOPLAMI 2013 Total	1	2	3	4	5	6	7	8	9	10	11	12	2014 TOPLAMI 2014 Total
VOLKSWAGEN	88.304	4.242	5.080	6.247	7.025	7.193	6.026	7.104	6.863	6.283	7.139	0	0	63.202
OPEL	55.719	1.672	1.374	2.316	2.833	3.346	3.431	2.888	2.868	3.125	3.442	0	0	27.295
RENAULT	32.904	1.719	1.616	2.101	1.842	2.121	1.629	1.719	1.862	2.159	1.771	0	0	18.539
FORD	58.405	1.389	1.244	1.621	2.400	2.866	3.658	4.762	3.220	2.420	2.449	0	0	26.029
DACIA	28.901	1.158	1.229	1.854	1.586	1.883	2.274	2.358	2.096	1.492	2.269	0	0	18.199
NISSAN	18.417	741	1.603	2.355	1.237	1.181	985	1.091	1.687	1.592	1.455	0	0	13.927
HYUNDAI	29.824	882	1.125	1.362	1.675	1.861	1.986	1.720	1.616	2.324	1.896	0	0	16.447
MERCEDES	20.023	582	900	1.783	1.619	2.083	2.512	1.723	1.700	2.014	2.013	0	0	16.929
B. M. W	20.705	334	617	1.875	1.852	1.938	2.076	2.050	2.856	2.417	3.146	0	0	19.161
AUDI	14.987	455	750	1.175	1.391	1.598	1.255	903	1.657	1.303	1.525	0	0	12.012
PEUGEOT	23.068	622	871	1.258	1.208	1.324	1.999	1.104	1.109	1.314	1.124	0	0	11.933
SKODA	12.833	458	632	747	907	1.578	1.200	1.230	1.355	1.300	1.377	0	0	10.784
CITROEN	19.690	657	715	790	1.062	1.040	888	943	952	1.370	1.259	0	0	9.676
KIA	13.195	483	462	694	733	775	944	876	981	1.208	861	0	0	8.017
SEAT	11.065	536	352	524	762	811	959	1.326	1.310	719	1.350	0	0	8.649
TOYOTA	22.421	366	363	512	682	647	576	953	975	888	920	0	0	6.882
FIAT	10.913	587	313	306	553	723	718	516	427	370	412	0	0	4.925
VOLVO	5.021	252	256	412	509	525	501	470	428	448	557	0	0	4.358
HONDA	3.394	142	257	285	455	161	105	295	246	224	187	0	0	2.357
CHEVROLET	12.506	206	161	134	29	8	14	14	0	1	1	0	0	568
SUBARU	1.101	120	70	116	91	108	124	68	96	135	110	0	0	1.038
LAND ROVER	1.323	26	52	142	95	144	94	88	66	76	114	0	0	897
MINI (İngiliz)	1.557	51	51	150	45	73	56	48	47	88	136	0	0	745
SUZUKI	1.623	76	68	98	99	179	115	83	86	50	45	0	0	899
MITSUBISHI	1.488	83	81	53	70	65	62	58	68	78	70	0	0	688
MAZDA	1.377	30	40	69	133	57	170	61	53	153	155	0	0	921
PROTON	715	110	22	24	74	80	50	20	20	32	30	0	0	462
ALFA ROMEO	1.030	60	26	32	44	147	150	110	62	47	75	0	0	753
JEEP	973	31	66	64	71	46	63	45	171	129	263	0	0	949
PORSCHE	517	45	31	27	41	41	41	57	54	35	44	0	0	416
SSANGYONG	972	44	16	38	52	30	57	41	40	40	36	0	0	394
LANCIA	782	8	31	44	69	17	18	3	2	4	2	0	0	198
CHERY	492	17	16	34	34	53	35	12	17	22	20	0	0	260
GEELY	623	12	5	9	8	3	10	10	9	10	3	0	0	79
MASERATI	40	6	8	9	4	5	4	3	5	7	6	0	0	57
SMART	110	4	5	8	8	5	8	7	0	4	6	0	0	55
JAGUAR	97	0	8	3	5	2	8	4	4	15	1	0	0	50
FERRARI	23	0	3	2	0	2	0	0	0	2	1	0	0	10
BENTLEY	21	0	2	1	0	2	1	2	1	1	2	0	0	12
INFINITI	37	1	0	1	0	1	0	0	0	0	0	0	0	3
LAMBORGHINI	4	0	1	0	0	0	0	0	0	0	1	0	0	2
TATA	326	1	0	0	0	0	17	15	5	27	19	0	0	84
TOPLAM	517.526	18.208	20.522	29.275	31.303	34.722	34.819	34.780	35.014	33.926	36.292	0	0	308.861

2014 YILI İTHAL HAFİF TİCARİ ARAÇ SATIŞLARI / Light Commercial Vehicles Import 2014

	2013 TOPLAMI 2013 Total	1	2	3	4	5	6	7	8	9	10	11	12	2014 TOPLAMI 2014 Total
VOLKSWAGEN	23.752	1.152	1.144	1.365	1.779	1.956	2.004	1.975	2.208	1.915	1.975	0	0	17.473
RENAULT	11.550	565	431	556	484	613	666	640	767	849	746	0	0	6.317
MERCEDES	10.421	490	389	712	456	493	658	479	759	679	838	0	0	5.953
FIAT	6.245	397	455	414	557	514	424	414	796	731	722	0	0	5.424
DACIA	7.494	510	400	315	340	427	409	440	505	1.063	473	0	0	4.882
CITROEN	6.679	234	103	318	386	448	666	424	610	596	610	0	0	4.446
PEUGEOT	8.323	78	105	249	445	539	438	361	448	701	434	0	0	3.798
MITSUBISHI	3.592	229	180	201	266	196	168	297	502	557	530	0	0	3.126
ISUZU	2.587	228	138	174	177	190	123	212	260	76	54	0	0	1.632
TOYOTA	2.413	139	105	349	116	66	83	94	118	128	113	0	0	1.311
IVECO	2.204	77	127	212	181	168	189	138	164	201	250	0	0	1.707
HYUNDAI	1.480	117	86	73	117	126	67	149	199	101	104	0	0	1.139
KIA	453	47	44	62	102	114	158	102	241	319	240	0	0	1.429
SSANGYONG	859	63	55	11	33	31	43	64	73	47	52	0	0	472
TATA	316	20	34	16	29	27	16	25	25	25	24	0	0	241
NISSAN	878	9	2	20	13	20	19	9	26	58	50	0	0	226
FORD	657	1	23	12	16	7	14	34	18	55	24	0	0	204
MAZDA	3	0	5	0	0	3	1	0	0	0	0	0	0	9
TOPLAM	89.906	4.356	3.826	5.059	5.497	5.938	6.146	6.094	7.533	8.115	7.225	0	0	59.789