



OTOMOTİV SANAYİİ DERNEĐİ
AUTOMOTIVE MANUFACTURERS ASSOCIATION

AYLIK RAPOR

Automotive Industry Monthly Report

Ekim / October 2015

- **Üretim**/Production
- **Satış**/Sales
- **İthalat**/Imports
- **İhracat**/Exports

OSD "OICA" Üyesidir



OSD is a Member of "OICA"



2015 Ekim Ayı Özeti / 2015 October Summary

KONULAR/MATTERS		EKİM / OCTOBER			10 AY/ 10 MONTHS			SON 12 AYLIK / YoY		
		2014	2015	2015/2014 (%)	2014	2015	2015/2014 (%)	2014	2015	2015/2014 (%)
Üretim/ Production	Toplam/ Total	100.977	132.959	32	936.759	1.106.801	18	1.133.571	1.340.487	18
	Otomobil/ P.Cars	62.001	77.243	25	593.493	643.467	8	710.583	783.413	10
Pazar/ Market	Toplam/ Total	69.259	66.518	-4	569.608	759.715	33	788.221	997.593	27
	Otomobil/ P.Cars	50.814	47.954	-6	417.582	548.859	31	582.898	718.608	23
İthalat/ Import	Toplam/ Total	44.447	44.681	1	378.018	501.368	33	527.855	647.991	23
	Otomobil/ P.Cars	36.292	36.108	-1	308.861	409.631	33	437.312	530.752	21
İhracat/ Export	Toplam/ Total	68.977	99.866	45	722.308	806.825	12	867.100	969.697	12
	Otomobil/ P.Cars	44.544	58.704	32	478.105	487.378	2	568.210	591.266	4
İhracat / Export (\$)	Toplam/ Total **	1.775.634.279	2.065.985.240	16	19.061.657.442	17.780.181.763	-7	22.986.784.478	21.490.243.211	-7
	Otomobil/ P.Cars	562.407.589	591.505.273	5	6.081.700.203	5.632.483.682	-7	7.264.531.008	6.795.198.570	-6

PARAMETRELER / PARAMETERS		EKİM / OCTOBER			10 AY/ 10 MONTHS			SON 12 AYLIK / YoY		
		2014	2015	2015/2014 (%)	2014	2015	2015/2014 (%)	2014	2015	2015/2014 (%)
ÜFE/ PPI		0,92	-0,20	**	8,22	7,59	**	10,10	5,58	**
TÜFE/ CPI		1,90	1,55	**	8,45	7,86	**	8,96	7,69	**
Sanayi Endeksi/ Industry Index		0,35	-0,37	**	9,11	8,03	**	10,84	6,29	**
\$ (*)		2,2012	2,9641	35	2,1760	2,7016	24	2,1591	2,6292	22
EURO (*)		2,7643	3,2831	19	2,9119	3,0011	3	2,8997	2,9657	2
Japon Yeni (*)		1,9605	2,4504	25	2,0876	2,2220	6	2,0710	2,1678	5

(*) Ortalama Değerler / Average Values

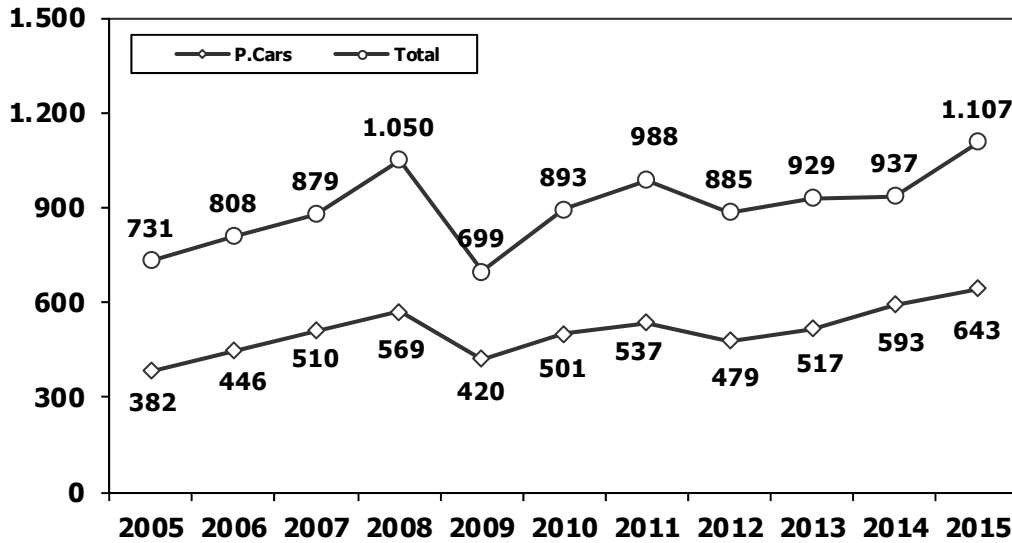
(**) Toplam Sanayi / Total Industry Including Components

2014/2015 Yılları Üretim 2014/2015 Production

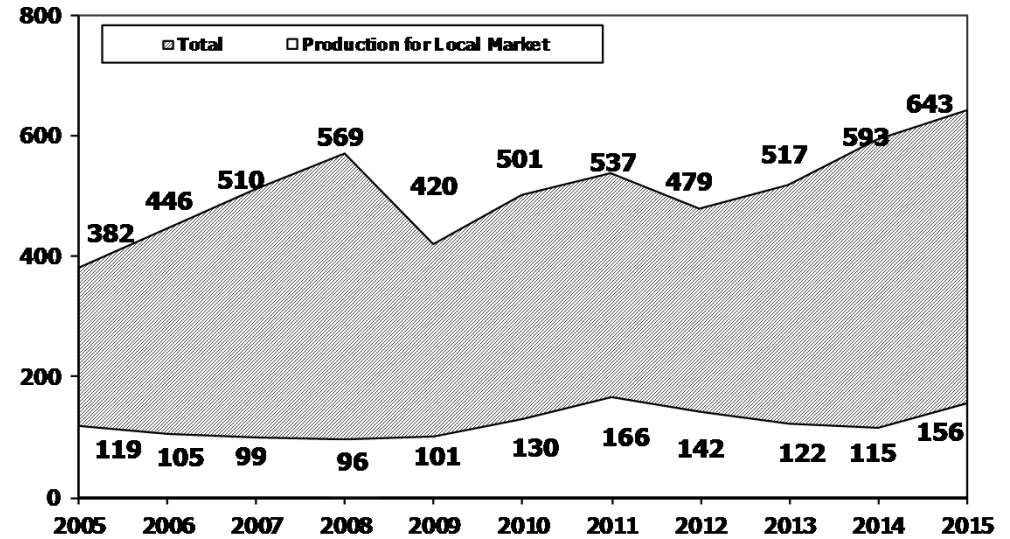
K.KAMYON : AYA 3.5-12 Ton (L.Truck:GWV 3.5-12 Ton)
B.KAMYON : AYA 12 Ton'dan Büyük (M.Truck:GWV 12 Ton And Up)

TİPLER	EKİM AYI ÜRETİMİ October Production		10 AYLIK ÜRETİM 10 Months Production		DEĞİŞİM % Percent Change %	
	2014	2015	2014	2015	EKİM October	10 AY 10 Months
OTOMOBİL - Pass.Car	62.001	77.243	593.493	643.467	25	8
TİCARİ ARAÇLAR - Commercial Vehicles	38.976	55.716	343.266	463.334	43	35
* B. KAMYON - M. Truck	2.518	2.351	23.462	25.692	-7	10
* K. KAMYON - L. Truck	246	525	2.664	3.418	113	28
* KAMYONET - Pick Up	32.052	49.318	279.758	378.315	54	35
* OTOBÜS - Bus	435	894	5.327	7.014	106	32
* MİNİBÜS - Minibus	3.331	1.980	27.471	43.376	-41	58
* MİDİBÜS - Midibus	394	648	4.584	5.519	64	20
TAŞIT ARAÇLARI TOPLAM - MV Total	100.977	132.959	936.759	1.106.801	32	18
TRAKTÖR - F.Tractor	4.103	4.711	40.752	43.551	15	7
GENEL TOPLAM - Grand Total	105.080	137.670	977.511	1.150.352	31	18

Toplam Üretim ve Otomobil Üretimi (x1000) (Ocak-Ekim)
Total & P.Cars Production (x1000) (January- October)

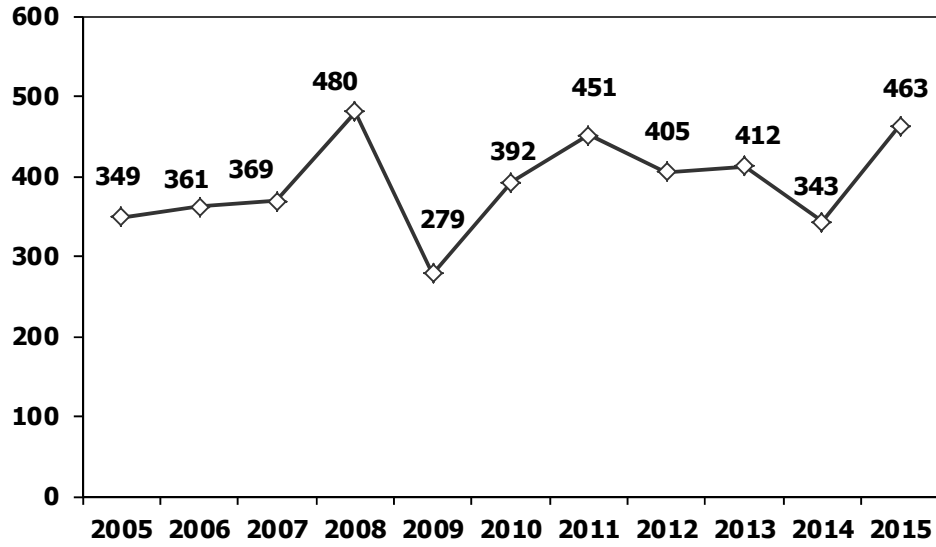


Otomobil Üretimi ve İhracat (x1000) (Ocak-Ekim)
P.Cars Production & Exports (x1000) (January- October)



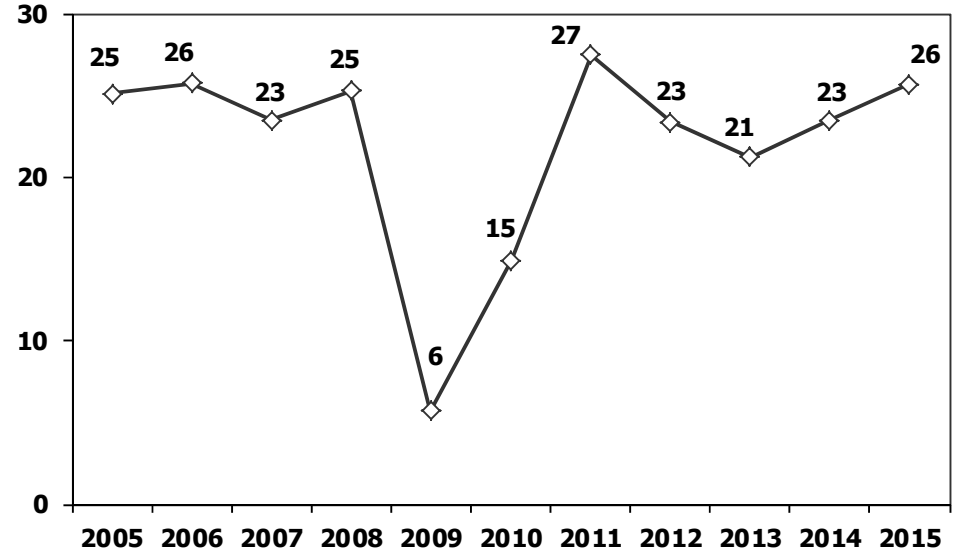
Ticari Araç Üretimi (x1000) (Ocak-Ekim)

Commercial Vehicle Production (x1000) (January- October)



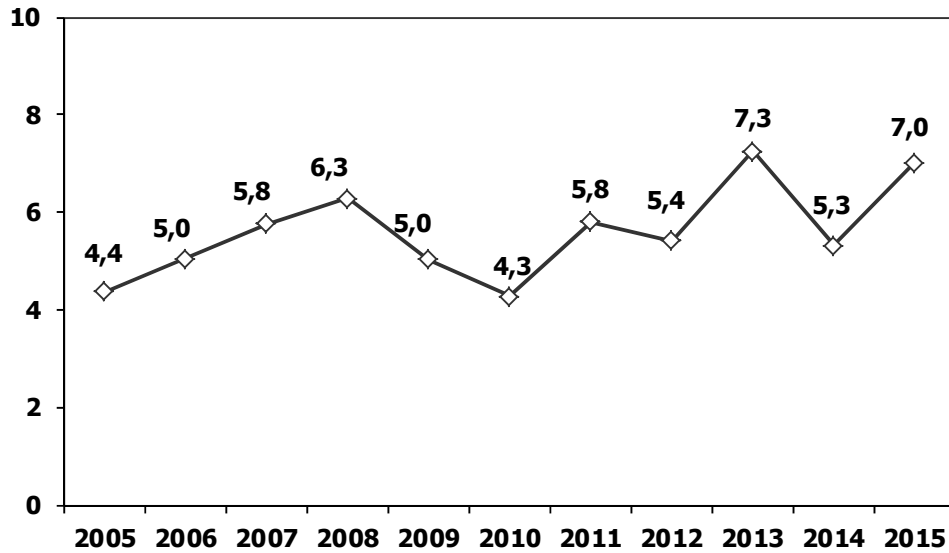
(AYA >12 Ton) **Büyük Kamyon Üretimi** (x1000) (Ocak-Ekim)

(GVW >12 Ton) Heavy Truck Production (x1000) (January- October)



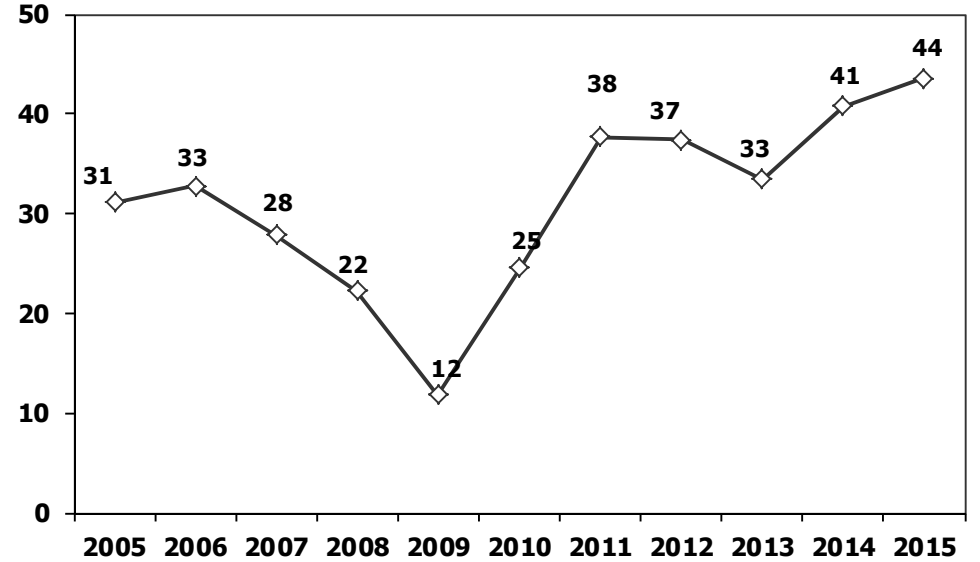
Otobüs Üretimi (x1000) (Ocak-Ekim)

Bus Production (x1000) (January- October)

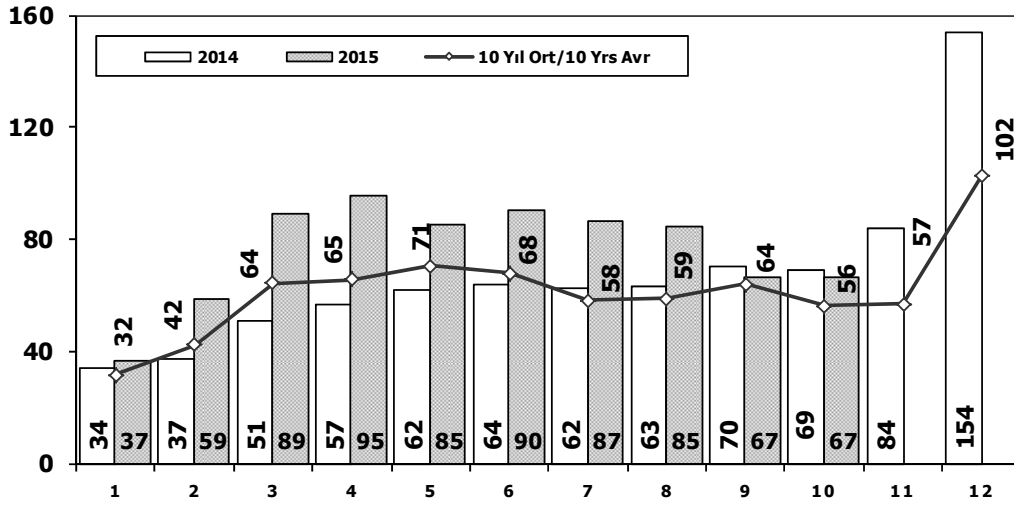


Traktör Üretimi (x1000) (Ocak-Ekim)

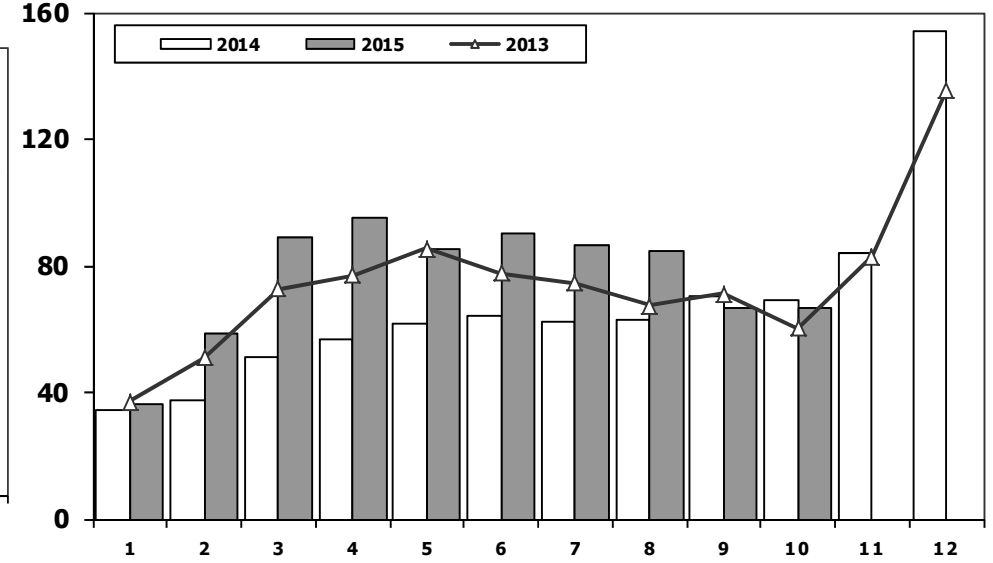
F. Tractor Production (x1000) (January- October)



Toplam Pazarın Analizi (x1000) Total Market Analysis (x1000)



Toplam Pazar (x1000) Total Market (x1000)

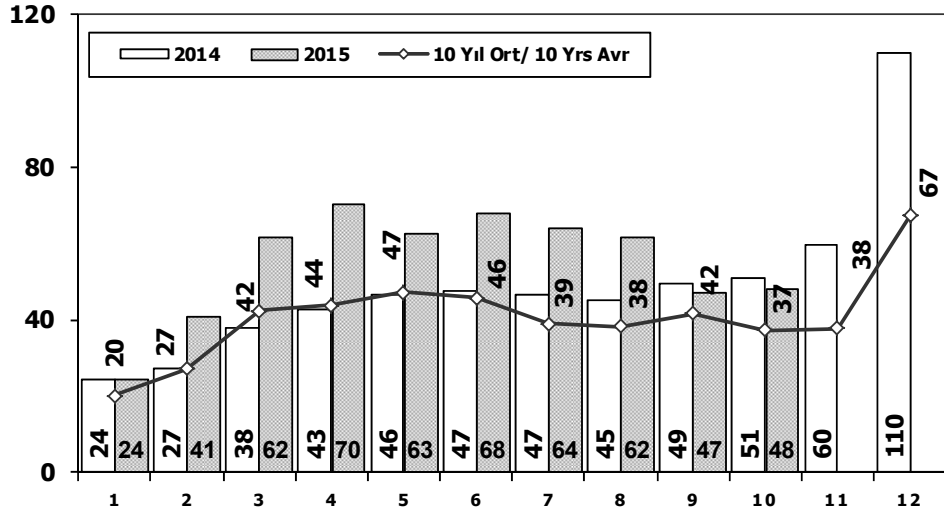


Aylar / Months	10 Yil Ort. 10 Yrs Avr. (x1000)	2015 (x1000)	%
1	31,7	36,6	15,3
2	42,3	58,5	38,5
3	64,3	89,1	38,6
4	65,4	95,4	45,9
5	70,5	85,1	20,8
6	67,9	90,5	33,3
7	58,3	86,6	48,6
8	58,7	84,7	44,3
9	64,1	66,6	3,9
10	56,1	66,5	18,5
Total	579,3	759,7	31,1

	1	2	3	4	5	6	7	8	9	10	11	12	10 Ay/Mo	Total
2005	22.687	38.291	64.502	60.873	71.383	64.379	63.847	68.647	66.580	60.791	65.719	110.838	581.980	758.537
2006	29.969	44.646	65.090	68.853	83.289	58.203	40.037	47.374	49.629	39.805	55.898	82.722	526.895	665.515
2007	24.950	31.702	45.488	45.633	51.255	51.661	50.117	54.171	50.078	56.058	67.017	106.076	461.113	634.206
2008	33.792	38.121	56.814	50.967	51.627	49.393	44.692	46.592	46.829	35.147	28.152	44.418	453.974	526.544
2009	20.631	22.846	56.531	54.426	64.887	63.102	30.246	37.092	83.403	22.117	29.202	91.386	455.281	575.869
2010	21.050	32.313	53.828	57.079	61.628	63.390	63.718	64.645	66.601	76.780	77.406	154.734	561.032	793.172
2011	47.658	62.348	83.333	82.071	85.093	85.863	65.364	61.378	63.643	72.640	67.195	134.281	709.391	910.867
2012	31.219	43.827	68.957	66.014	74.820	74.781	65.122	60.848	73.197	62.677	75.045	121.113	621.462	817.620
2013	37.140	50.931	72.688	77.015	85.421	77.771	74.726	67.383	71.037	60.399	83.017	135.596	674.511	893.124
2014	34.225	37.308	50.964	56.766	61.909	63.952	62.206	62.839	70.180	69.259	83.937	153.941	569.608	807.486
2015	36.579	58.532	89.121	95.431	85.144	90.462	86.622	84.683	66.623	66.518	0	0	759.715	759.715

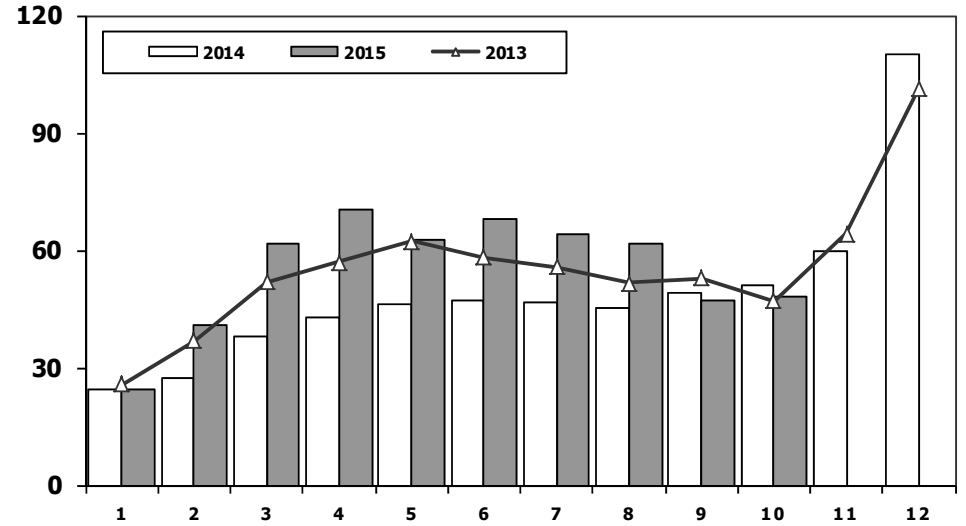
Otomobil Pazarının Analizi (x1000)

P.Cars Market Analysis (x1000)



Otomobil Pazarı (x1000)

P.Cars Market (x1000)



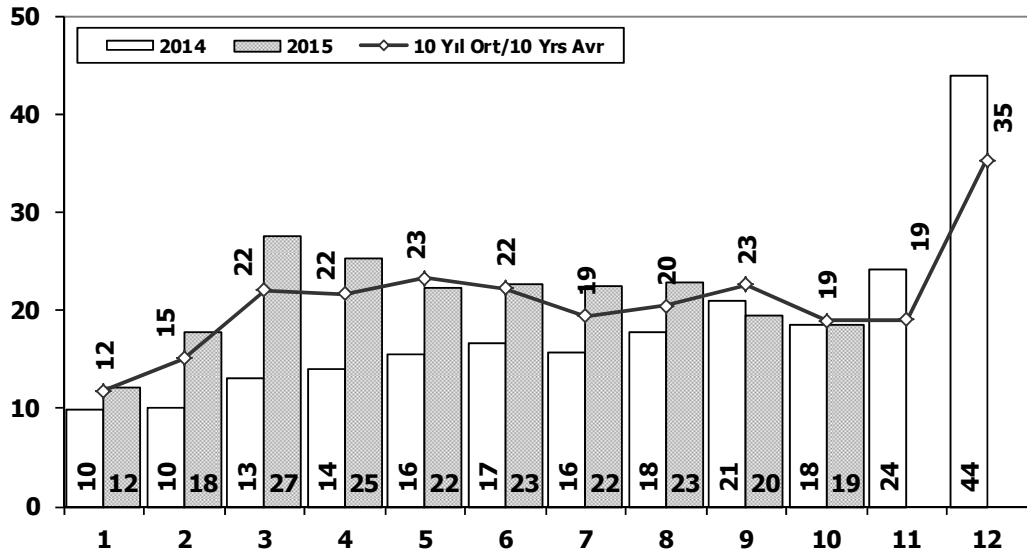
Aylar / Months	10 Yil Ort. 10 Yrs Avr. (x1000)	2015 (x1000)	%
1	20,0	24,5	22,7
2	27,1	40,8	50,4
3	42,3	61,7	45,9
4	43,8	70,2	60,3
5	47,2	62,9	33,2
6	45,6	67,8	48,7
7	38,9	64,2	65,1
8	38,3	61,8	61,3
9	41,5	47,1	13,3
10	37,2	48,0	28,9
Total	381,9	548,9	43,7

	1	2	3	4	5	6	7	8	9	10	11	12	10 Ay/Mo	Total
2005	11.595	21.012	38.129	36.206	38.480	40.900	38.969	38.648	36.410	34.960	37.841	65.447	335.309	438.597
2006	16.506	24.929	36.996	40.177	48.521	32.982	22.653	24.873	27.517	21.237	30.477	46.351	296.391	373.219
2007	13.186	17.212	24.336	25.204	29.067	30.126	28.246	28.469	27.662	32.569	39.643	61.745	256.077	357.465
2008	18.588	21.196	34.147	30.313	31.477	28.724	25.530	26.102	27.053	19.788	17.201	25.879	262.918	305.998
2009	13.173	14.492	40.622	36.202	44.188	41.019	16.637	22.537	52.162	13.828	17.781	57.178	294.860	369.819
2010	12.594	20.651	33.958	36.549	40.467	42.086	41.399	42.222	42.477	47.859	50.061	99.461	360.262	509.784
2011	29.868	39.004	54.023	53.835	56.302	56.714	43.518	38.875	39.964	47.508	44.951	88.957	459.611	593.519
2012	21.077	29.189	47.270	45.645	50.460	50.849	44.531	41.236	49.360	43.440	52.297	80.926	423.057	556.280
2013	25.835	36.814	51.785	56.999	62.383	58.290	55.712	51.611	52.925	46.985	64.117	101.199	499.339	664.655
2014	24.368	27.167	37.812	42.769	46.379	47.278	46.602	45.131	49.262	50.814	59.695	110.054	417.582	587.331
2015	24.498	40.817	61.676	70.211	62.878	67.766	64.218	61.753	47.088	47.954	0	0	548.859	548.859



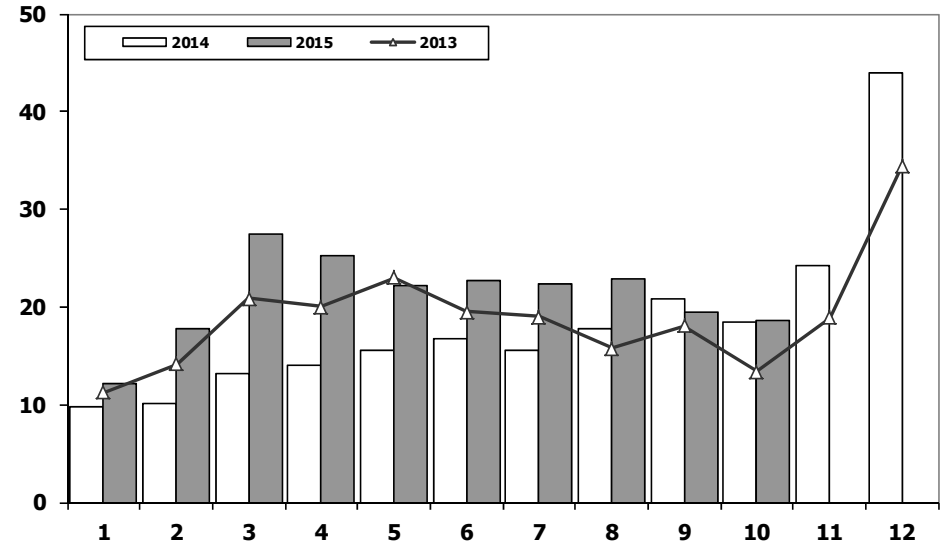
Ticari Araç Pazarının Analizi (x1000)

CV Market Analysis (x1000)



Ticari Araç Pazarı (x1000)

CV Total Market (Local + Imports) (x1000)



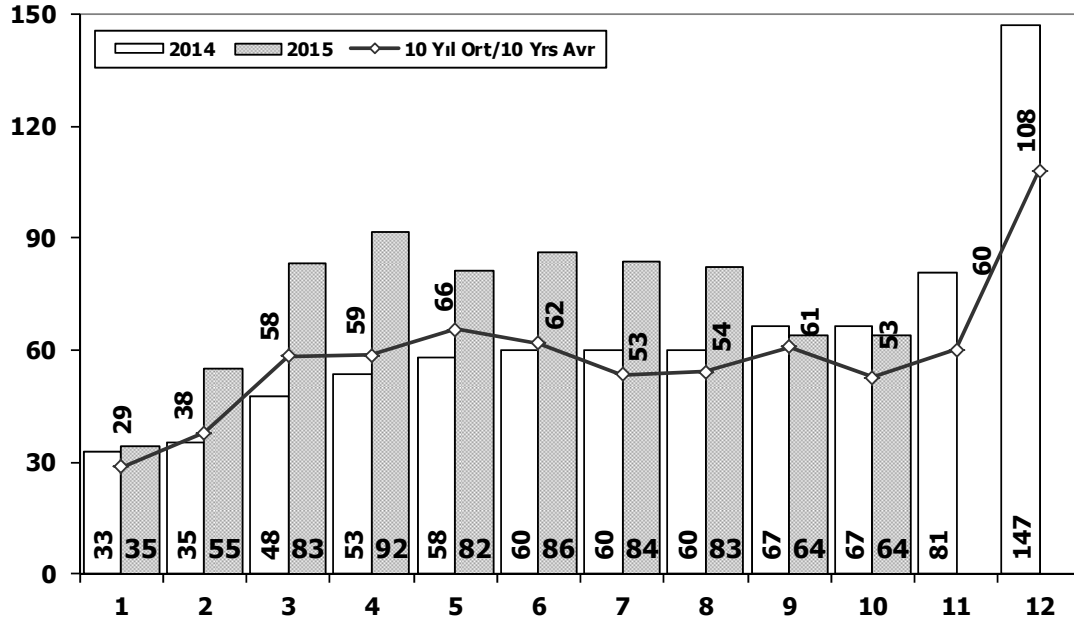
Aylar / Months	10 Yil Ort. 10 Yrs Avr. (x1000)	2015 (x1000)	%
1	11,8	12,1	2,8
2	15,1	17,7	17,2
3	22,0	27,4	24,6
4	21,6	25,2	16,6
5	23,3	22,3	-4,4
6	22,3	22,7	1,9
7	19,4	22,4	15,6
8	20,4	22,9	12,3
9	22,6	19,4	-14,0
10	18,9	18,6	-2,0
Total	197,4	210,7	6,8

	1	2	3	4	5	6	7	8	9	10	11	12	10 Ay/Mo	Total
2005	11.092	17.279	26.373	24.667	32.903	23.479	24.878	29.999	30.170	25.831	27.878	45.391	246.671	319.940
2006	13.463	19.717	28.094	28.676	34.768	25.221	17.384	22.501	22.112	18.568	25.421	36.371	230.504	292.296
2007	11.764	14.490	21.152	20.429	22.188	21.535	21.871	25.702	22.416	23.489	27.374	44.331	205.036	276.741
2008	15.204	16.925	22.667	20.654	20.150	20.669	19.162	20.490	19.776	15.359	10.951	18.539	191.056	220.546
2009	7.458	8.354	15.909	18.224	20.699	22.083	13.609	14.555	31.241	8.289	11.421	34.208	160.421	206.050
2010	8.456	11.662	19.870	20.530	21.161	21.304	22.319	22.423	24.124	28.921	27.345	55.273	200.770	283.388
2011	17.790	23.344	29.310	28.236	28.791	29.149	21.846	22.503	23.679	25.132	22.244	45.324	249.780	317.348
2012	10.142	14.638	21.687	20.369	24.360	23.932	20.591	19.612	23.837	19.237	22.748	40.187	198.405	261.340
2013	11.305	14.117	20.903	20.016	23.038	19.481	19.014	15.772	18.112	13.414	18.900	34.397	175.172	228.469
2014	9.857	10.141	13.152	13.997	15.530	16.674	15.604	17.708	20.918	18.445	24.242	43.887	152.026	220.155
2015	12.081	17.715	27.445	25.220	22.266	22.696	22.404	22.930	19.535	18.564	0	0	210.856	210.856



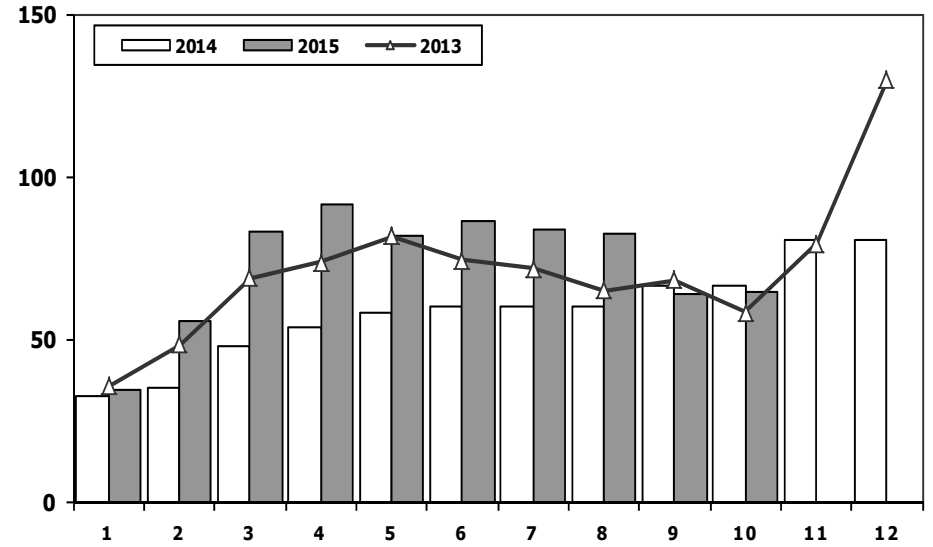
Hafif Araç Pazarının Analizi (x1000)

LV Market Analysis (x1000)



Hafif Araç Pazarı (x1000)

LV Total Market (Local + Imports) (x1000)

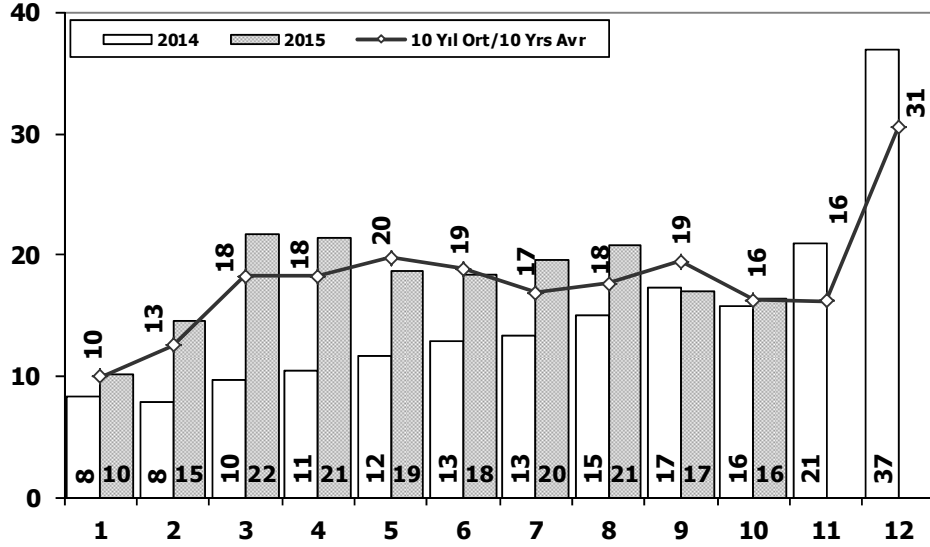


Aylar / Months	10 Yil Ort. 10 Yrs Avr. (x1000)	2015 (x1000)	%
1	28,6	34,6	21,2
2	37,7	55,3	46,6
3	58,3	83,3	42,9
4	58,6	91,6	56,3
5	65,6	81,5	24,3
6	61,9	86,2	39,2
7	53,5	83,8	56,7
8	54,1	82,6	52,6
9	60,8	64,0	5,3
10	52,7	64,3	21,9
Total	531,8	727,2	36,8

	1	2	3	4	5	6	7	8	9	10	11	12	10 Ay/Mo	Total
2005	20.747	35.766	60.707	56.844	67.357	60.796	61.015	64.011	61.954	56.638	61.364	103.209	545.835	710.408
2006	27.917	40.938	60.052	64.038	78.229	54.355	37.251	43.767	46.109	36.542	51.867	76.787	489.198	617.852
2007	23.117	29.184	41.890	42.366	47.938	48.674	47.490	50.558	46.581	52.725	63.313	100.926	430.523	594.762
2008	31.527	35.251	53.649	47.701	48.598	46.324	42.156	43.670	43.932	32.884	26.253	42.078	425.692	494.023
2009	19.606	21.742	55.111	52.640	63.191	61.067	28.845	35.609	81.397	21.033	27.962	88.923	440.241	557.126
2010	20.095	31.172	51.769	54.946	59.377	60.896	61.345	61.764	63.814	73.404	73.962	148.369	538.582	760.913
2011	44.892	58.663	78.403	77.695	80.646	81.573	63.044	58.406	60.129	69.421	63.657	127.910	672.872	864.439
2012	29.545	41.324	64.884	62.949	70.863	71.067	62.304	58.148	69.629	59.938	71.710	115.400	590.651	777.761
2013	35.523	48.307	68.774	73.575	81.468	74.096	71.596	65.043	67.963	58.014	79.301	129.718	644.359	853.378
2014	32.670	35.021	47.581	53.305	58.121	60.163	59.907	60.199	66.531	66.573	80.621	146.989	540.071	767.681
2015	34.615	55.331	83.302	91.602	81.542	86.158	83.836	82.577	64.025	64.255	0	0	727.243	727.243

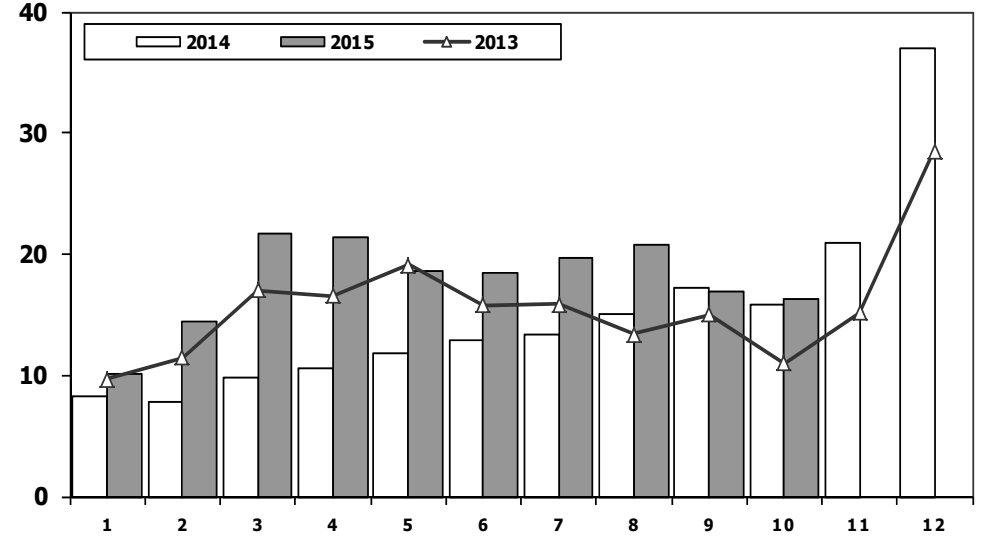
Hafif Ticari Arac Pazarının Analizi (x1000)

LCV Market Analysis (x1000)



Hafif Ticari Arac Pazarı (x1000)

LCV Total Market (Local + Imports) (x1000)

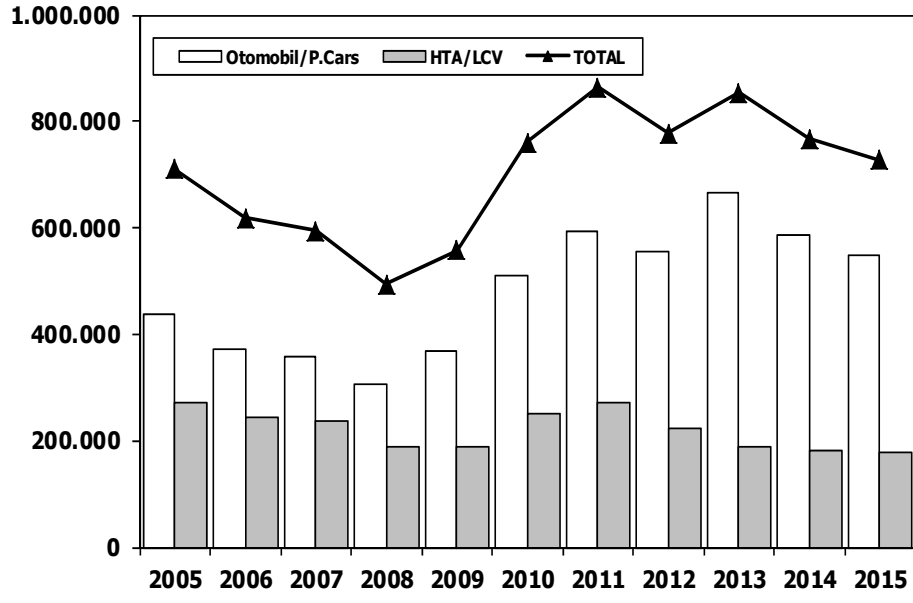


Aylar / Months	10 Yil Ort. 10 Yrs Avr. (x1000)	2015 (x1000)	%
1	10,0	10,1	1,4
2	12,5	14,5	15,7
3	18,3	21,6	18,3
4	18,3	21,4	16,9
5	19,8	18,7	-5,7
6	18,9	18,4	-2,4
7	16,9	19,6	16,3
8	17,7	20,8	17,7
9	19,5	16,9	-13,0
10	16,3	16,3	0,1
Total	168,0	178,4	6,2

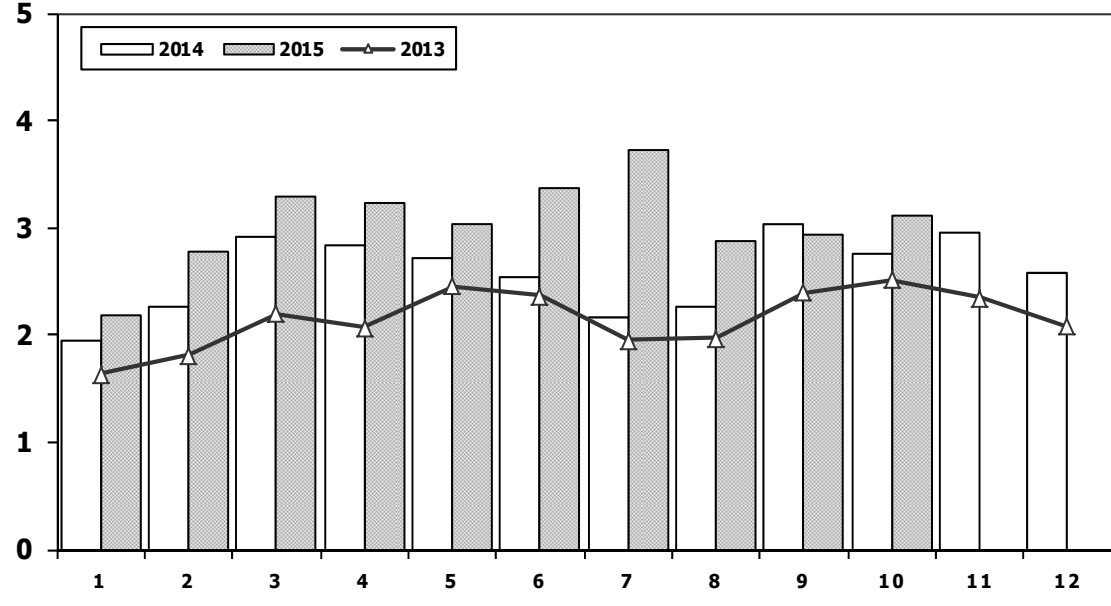
	1	2	3	4	5	6	7	8	9	10	11	12	10 Ay/Mo	Total
2005	9.152	14.754	22.578	20.638	28.877	19.896	22.046	25.363	25.544	21.678	23.523	37.762	210.526	271.811
2006	11.411	16.009	23.056	23.861	29.708	21.373	14.598	18.894	18.592	15.305	21.390	30.436	192.807	244.633
2007	9.931	11.972	17.554	17.162	18.871	18.548	19.244	22.089	18.919	20.156	23.670	39.181	174.446	237.297
2008	12.939	14.055	19.502	17.388	17.121	17.600	16.626	17.568	16.879	13.096	9.052	16.199	162.774	188.025
2009	6.433	7.250	14.489	16.438	19.003	20.048	12.208	13.072	29.235	7.205	10.181	31.745	145.381	187.307
2010	7.501	10.521	17.811	18.397	18.910	18.810	19.946	19.542	21.337	25.545	23.901	48.908	178.320	251.129
2011	15.024	19.659	24.380	23.860	24.344	24.859	19.526	19.531	20.165	21.913	18.706	38.953	213.261	270.920
2012	8.468	12.135	17.614	17.304	20.403	20.218	17.773	16.912	20.269	16.498	19.413	34.474	167.594	221.481
2013	9.688	11.493	16.989	16.576	19.085	15.806	15.884	13.432	15.038	11.029	15.184	28.519	145.020	188.723
2014	8.302	7.854	9.769	10.536	11.742	12.885	13.305	15.068	17.269	15.759	20.926	36.935	122.489	180.350
2015	10.117	14.514	21.626	21.391	18.664	18.392	19.618	20.824	16.937	16.301	0	0	178.384	178.384



Hafif Arac Pazarı (AYA < 3.5 Ton)
Light Vehicle Market (GVW < 3.5 Ton)



Traktör Pazarı (x1000)
F.Tractor Market (x1000)

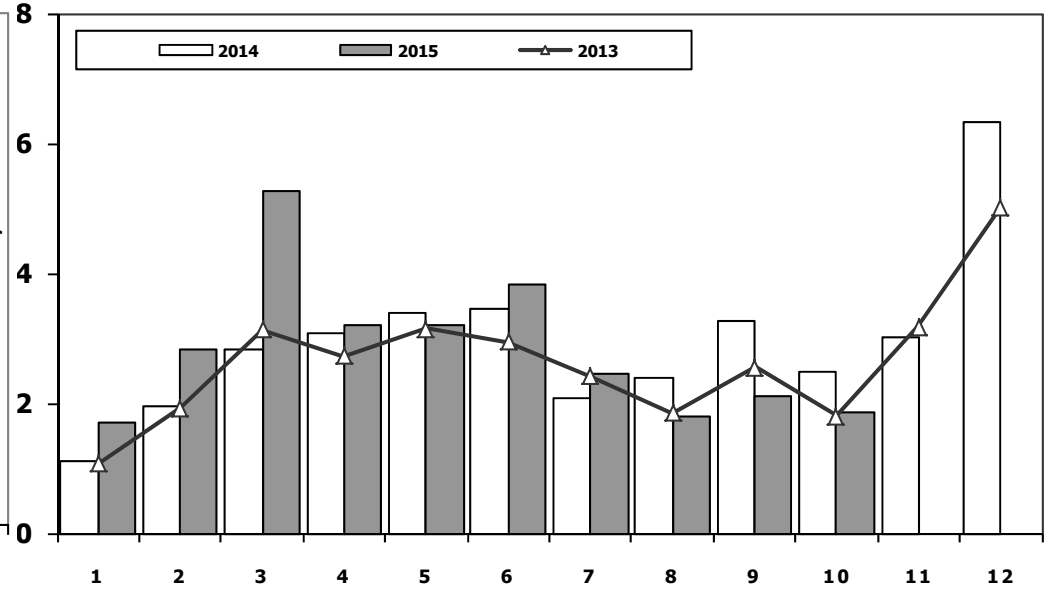
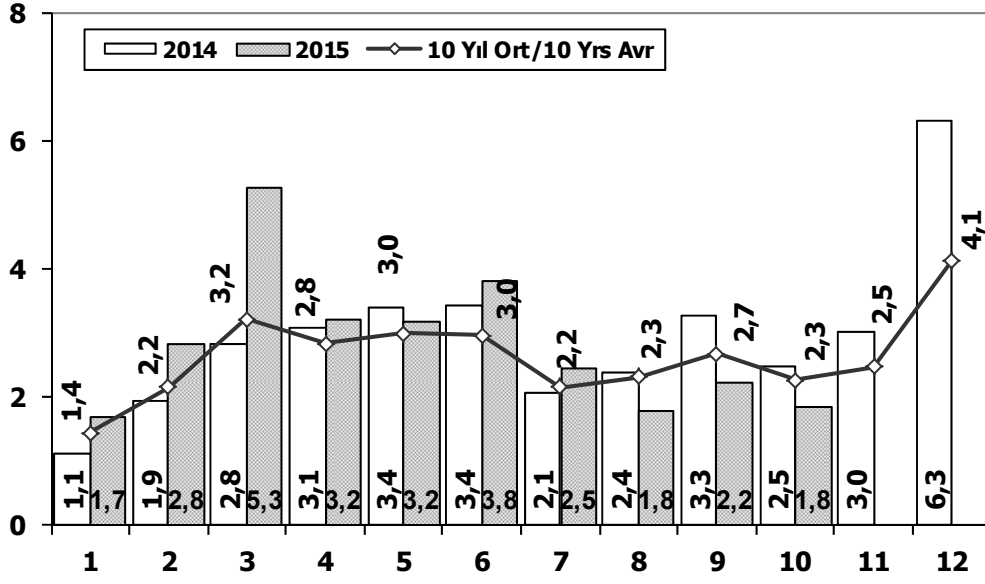


	2005	2006	2007	2008	2009	2010	2011	2012	2013	2014	2015
Otomobil/P.Cars	438.597	373.219	357.465	305.998	369.819	509.784	593.519	556.280	664.655	587.331	548.859
HTA/LCV	271.811	244.633	237.297	188.025	187.307	251.129	270.920	221.481	188.723	180.350	178.384
TOTAL	710.408	617.852	594.762	494.023	557.126	760.913	864.439	777.761	853.378	767.681	727.243
HTA/LCV (%)	38	40	40	38	34	33	31	28	22	23	25

	1	2	3	4	5	6	7	8	9	10	11	12	10 Ay/Mo	Total
2005	1.026	1.636	2.001	2.599	2.569	2.780	2.148	2.819	2.567	2.477	2.297	2.089	22.622	27.008
2006	1.578	2.493	2.746	2.841	3.561	2.356	1.685	2.177	2.756	1.915	2.353	1.925	24.108	28.386
2007	1.812	1.778	2.063	2.107	2.266	1.853	1.653	2.065	2.372	2.239	2.231	1.602	20.208	24.041
2008	1.510	1.427	1.933	1.692	1.689	1.592	1.275	924	904	609	707	359	13.555	14.621
2009	267	344	388	638	759	828	741	534	586	765	725	715	5.850	7.290
2010	714	903	1.432	1.653	1.736	1.673	1.613	1.527	2.351	2.787	2.656	2.345	16.389	21.390
2011	2.458	2.610	3.105	3.403	3.847	3.599	2.952	1.559	2.957	2.823	2.603	2.807	29.313	34.723
2012	2.216	2.632	3.223	3.259	3.067	2.821	2.037	1.262	1.648	1.858	1.921	1.579	24.023	27.523
2013	1.633	1.817	2.196	2.070	2.455	2.370	1.955	1.969	2.396	2.510	2.343	2.080	21.371	25.794
2014	1.941	2.256	2.915	2.837	2.723	2.534	2.171	2.265	3.039	2.755	2.964	2.573	25.436	30.973
2015	2.138	2.721	3.218	3.116	2.969	3.297	3.721	2.832	2.876	3.155	0	0	30.043	30.043

Kamyon Pazarının Analizi (x1000) AYA > 5 Ton Truck Market Analysis (x1000) GVW > 5 Ton

Kamyon Pazarı (x1000) AYA > 5 Ton Truck Market (x1000) GVW > 5 Ton



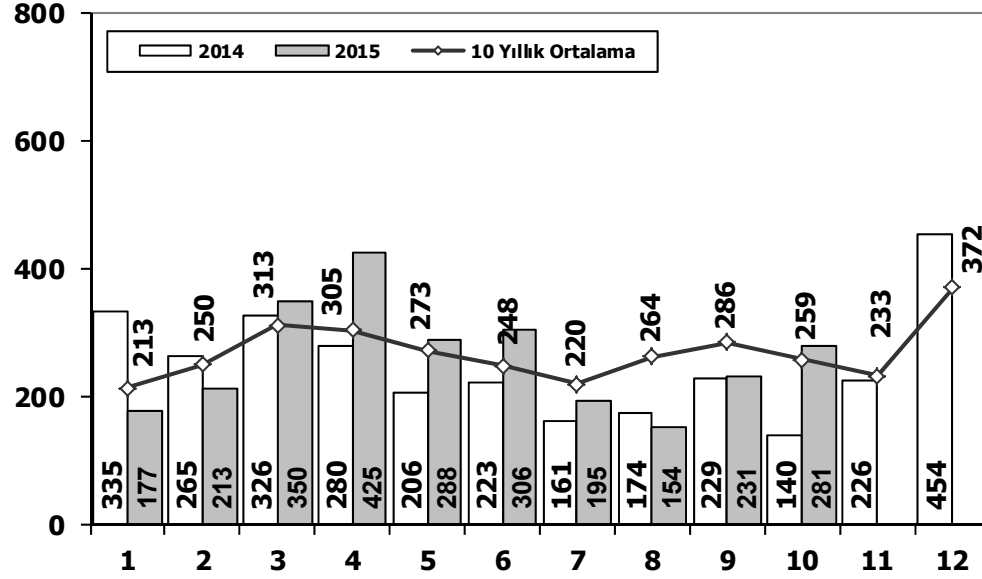
Aylar / Months	10 Yil Ort. 10 Yrs Avr. (x1000)	2015 (x100)	%
1	1,4	1,7	17,8
2	2,2	2,8	31,7
3	3,2	5,3	63,7
4	2,8	3,2	13,3
5	3,0	3,2	6,5
6	3,0	3,8	29,1
7	2,2	2,5	14,1
8	2,3	1,8	-22,2
9	2,7	2,2	-16,3
10	2,3	1,8	-18,6
Total	25,0	28,4	13,4

	1	2	3	4	5	6	7	8	9	10	11	12	10 Ay/Mo	Total
2005	1.693	2.186	3.288	3.484	3.413	3.147	2.504	4.028	4.043	3.708	3.918	6.570	31.494	41.982
2006	1.767	3.310	4.467	4.180	4.449	3.398	2.472	3.142	3.052	2.926	3.550	5.358	33.163	42.071
2007	1.554	2.055	3.065	2.940	2.865	2.613	2.372	3.145	2.988	2.886	3.258	4.444	26.483	34.185
2008	1.797	2.309	2.621	2.578	2.459	2.526	2.067	2.377	2.390	1.790	1.512	1.834	22.914	26.260
2009	771	759	1.034	1.342	1.355	1.651	1.156	1.205	1.780	866	981	2.015	11.919	14.915
2010	777	968	1.772	1.807	1.966	2.205	2.093	2.446	2.444	3.071	3.136	5.677	19.549	28.362
2011	2.552	3.292	4.418	3.754	3.803	3.749	1.996	2.478	3.081	2.774	3.108	5.787	31.897	40.792
2012	1.375	2.159	3.595	2.697	3.321	3.250	2.450	2.277	2.991	2.244	3.006	5.000	26.359	34.365
2013	1.077	1.931	3.127	2.720	3.145	2.951	2.411	1.845	2.554	1.801	3.173	5.025	23.562	31.760
2014	1.117	1.949	2.818	3.092	3.405	3.438	2.083	2.390	3.281	2.494	3.028	6.313	26.067	35.408
2015	1.708	2.840	5.270	3.208	3.189	3.823	2.460	1.798	2.245	1.848	0	0	28.389	28.389



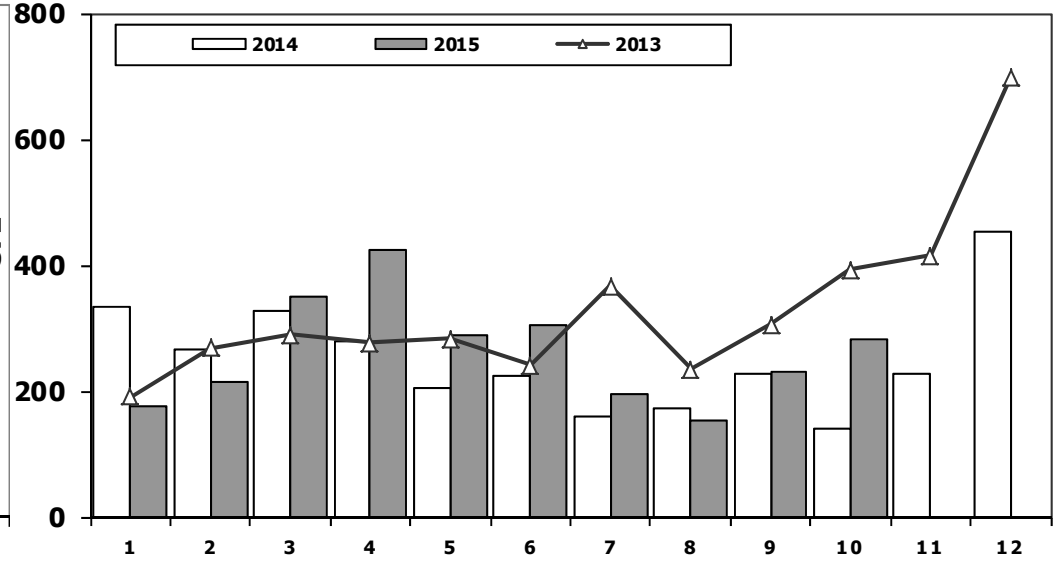
Midibüs Pazarının Analizi (7-9 mt / 25-35 Kişilik)

Midibus Market Analysis (7-9 mt / 25-35 Passengers)



Midibüs Pazarı (7-9 mt / 25-35 Kişilik Midibüs)

Midibus Market (7-9 mt / 25-35 Passengers)

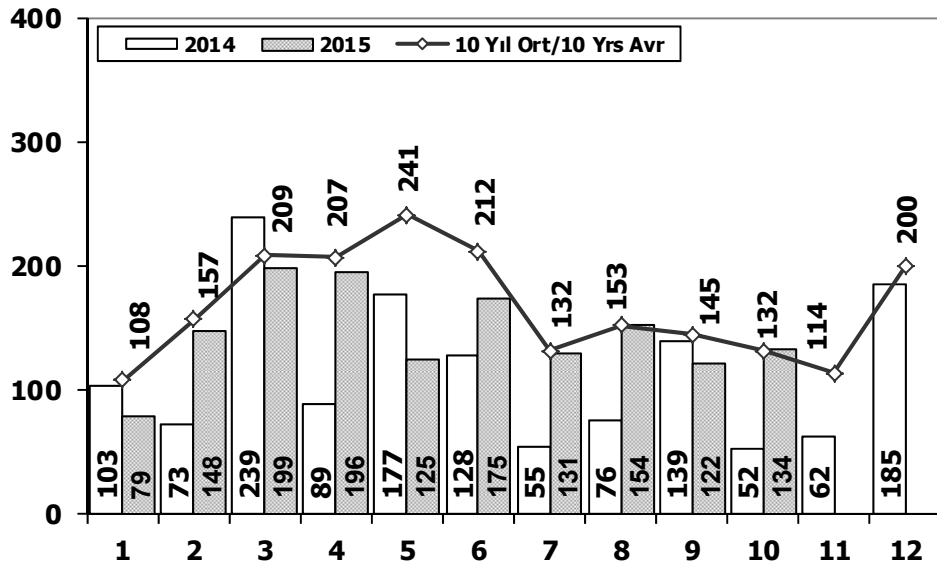


Aylar / Months	10 Yil Ort. 10 Yrs Avr.	2015	%
1	213	177	-17
2	250	213	-15
3	313	350	12
4	305	425	39
5	273	288	5
6	248	306	23
7	220	195	-11
8	264	154	-42
9	286	231	-19
10	259	281	8
Total	2.631	2.620	0

	1	2	3	4	5	6	7	8	9	10	11	12	10 Ay/Mo	Total
2005	182	258	432	393	439	269	252	459	436	329	328	574	3.449	4.351
2006	207	297	406	388	381	266	230	353	322	253	305	401	3.103	3.809
2007	207	272	404	238	302	283	164	365	399	279	283	465	2.913	3.661
2008	391	476	436	512	419	331	368	380	341	352	246	270	4.006	4.522
2009	154	124	160	220	174	198	160	175	168	143	206	323	1.676	2.205
2010	155	131	185	167	140	138	129	246	236	206	202	437	1.733	2.372
2011	138	195	294	316	280	258	211	305	301	276	260	270	2.574	3.104
2012	179	257	277	229	257	239	216	249	325	269	189	398	2.497	3.084
2013	191	268	289	276	283	241	367	235	305	392	415	697	2.847	3.959
2014	335	265	326	280	206	223	161	174	229	140	226	454	2.339	3.019
2015	177	213	350	425	288	306	195	154	231	281	0	0	2.620	2.620

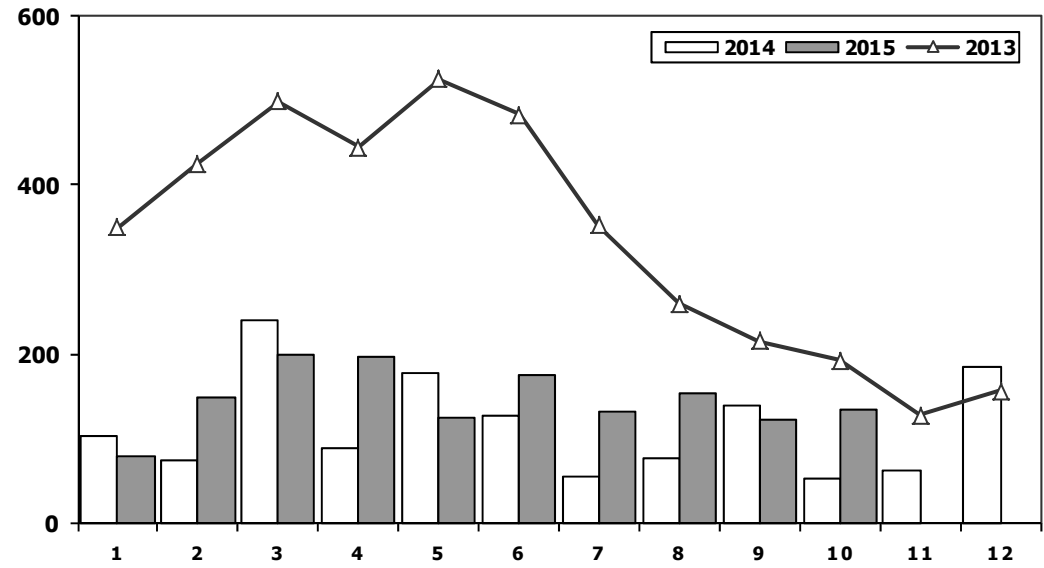
Otobüs Pazarının Analizi

Bus Market Analysis



Otobüs Pazarı

Bus Market

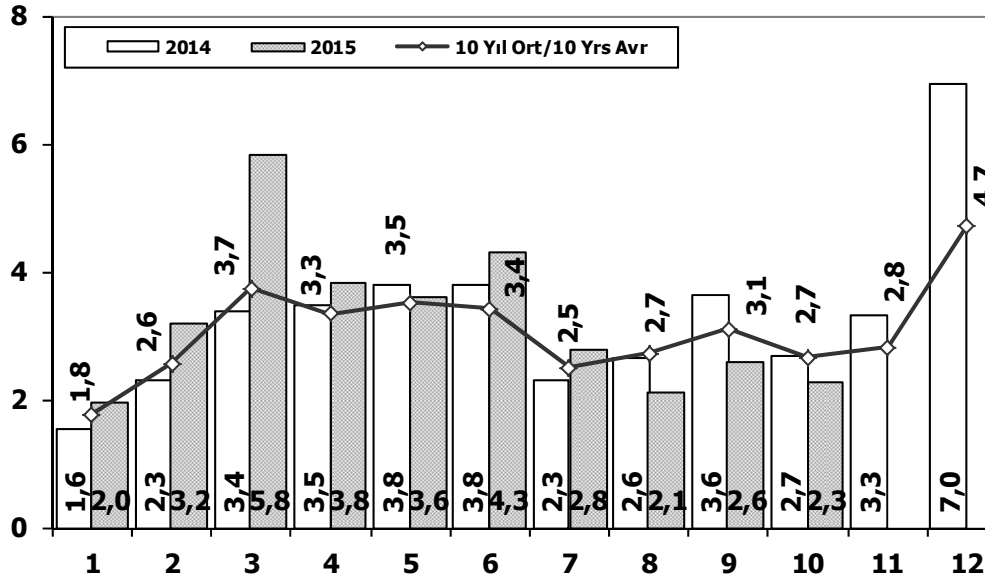


Aylar / Months	10 Yıl Ort. / 10 Yrs Avr.	2015	%
1	108	79	-27
2	157	148	-6
3	209	199	-5
4	207	196	-5
5	241	125	-48
6	212	175	-17
7	132	131	0
8	153	154	1
9	145	122	-16
10	132	134	2
Total	1.694	1.463	-14

	1	2	3	4	5	6	7	8	9	10	11	12	10 Ay/Mo	Total
2005	65	81	75	152	174	167	76	149	147	116	109	485	1.202	1.796
2006	78	101	165	247	230	184	84	112	146	84	176	176	1.431	1.783
2007	72	191	129	89	150	91	91	103	110	168	163	241	1.194	1.598
2008	77	85	108	176	151	212	101	165	166	121	141	236	1.362	1.739
2009	100	221	226	224	167	186	85	103	58	75	53	125	1.445	1.623
2010	23	42	102	159	145	151	151	189	107	99	106	251	1.168	1.525
2011	76	198	218	306	364	283	113	189	132	169	170	314	2.048	2.532
2012	120	87	201	139	379	225	152	174	252	226	140	315	1.955	2.410
2013	349	425	498	444	525	483	352	260	215	192	128	156	3.743	4.027
2014	103	73	239	89	177	128	55	76	139	52	62	185	1.131	1.378
2015	79	148	199	196	125	175	131	154	122	134	0	0	1.463	1.463

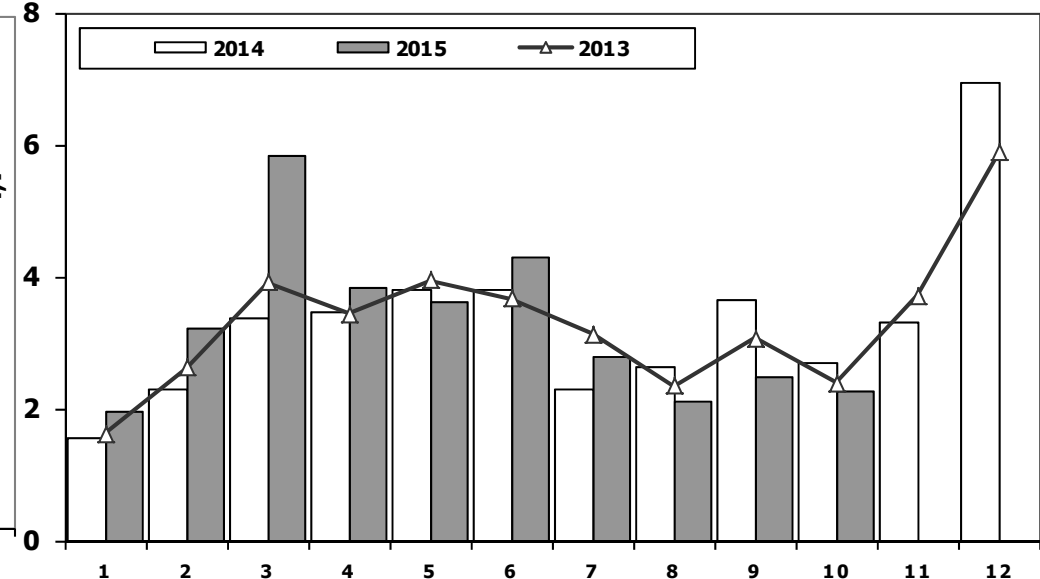
Ağır Ticari Araç Pazarının Analizi (x1000)

HCV Market Analysis (x1000)



Ağır Ticari Araç Pazarı (x1000)

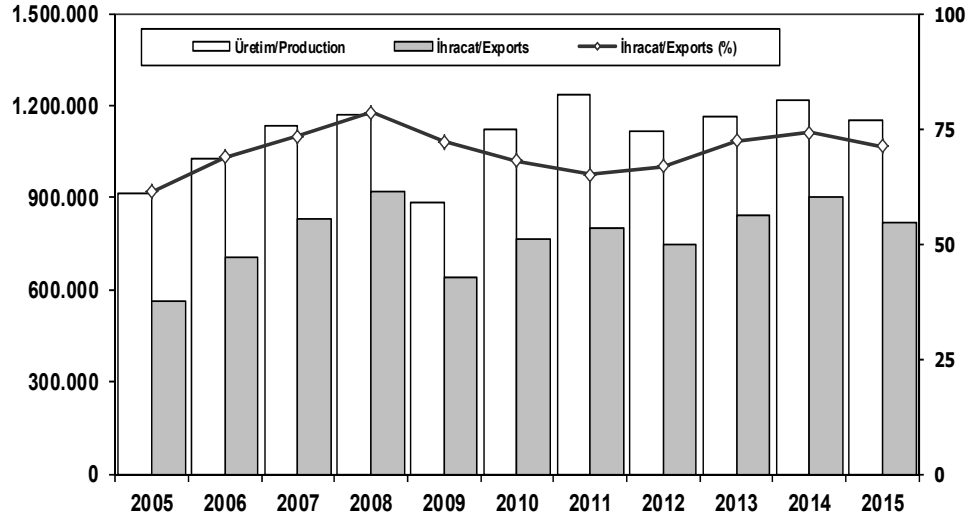
HCV Market (x1000)



Aylar / Months	10 Yil Ort. 10 Yrs Avr. (x1000)	2015 (x1000)	%
1	1,8	2,0	10,9
2	2,6	3,2	24,8
3	3,7	5,8	55,6
4	3,3	3,8	14,5
5	3,5	3,6	2,6
6	3,4	4,3	25,8
7	2,5	2,8	11,1
8	2,7	2,1	-22,8
9	3,1	2,6	-16,5
10	2,7	2,3	-15,0
Total	29,4	32,5	10,6

	1	2	3	4	5	6	7	8	9	10	11	12	10 Ay/Mo	Total
2005	1.940	2.525	3.795	4.029	4.026	3.583	2.832	4.636	4.626	4.153	4.355	7.629	36.145	48.129
2006	2.052	3.708	5.038	4.815	5.060	3.848	2.786	3.607	3.520	3.263	4.031	5.935	37.697	47.663
2007	1.833	2.518	3.598	3.267	3.317	2.987	2.627	3.613	3.497	3.333	3.704	5.150	30.590	39.444
2008	2.265	2.870	3.165	3.266	3.029	3.069	2.536	2.922	2.897	2.263	1.899	2.340	28.282	32.521
2009	1.025	1.104	1.420	1.786	1.696	2.035	1.401	1.483	2.006	1.084	1.240	2.463	15.040	18.743
2010	955	1.141	2.059	2.133	2.251	2.494	2.373	2.881	2.787	3.376	3.444	6.365	22.450	32.259
2011	2.766	3.685	4.930	4.376	4.447	4.290	2.320	2.972	3.514	3.219	3.538	6.371	36.519	46.428
2012	1.674	2.503	4.073	3.065	3.957	3.714	2.818	2.700	3.568	2.739	3.335	5.713	30.811	39.859
2013	1.617	2.624	3.914	3.440	3.953	3.675	3.130	2.340	3.074	2.385	3.716	5.878	30.152	39.746
2014	1.555	2.287	3.383	3.461	3.788	3.789	2.299	2.640	3.649	2.686	3.316	6.952	29.537	39.805
2015	1.964	3.201	5.819	3.829	3.602	4.304	2.786	2.106	2.598	2.263	0	0	32.472	32.472

İhracat/Üretim (2005-2015) Exports/Production (2005-2015)



	2005	2006	2007	2008	2009	2010	2011	2012	2013	2014	2015
Üretim/Production	916.062	1.026.427	1.132.951	1.171.917	884.466	1.124.982	1.234.637	1.115.233	1.166.043	1.218.848	1.150.352
İhracat/Exports	561.078	706.402	829.879	920.763	637.855	763.670	801.112	745.354	843.467	902.194	819.147
İhracat/Exports (%)	61	69	73	79	72	68	65	67	72	74	71

Taşıt Araçları İhracatı (2013-2015) Motor Vehicle Exports (2013-2015)

SEKTÖR/SECTOR	2013	2014	2014	2015	2014/2015 (%)
			10 Ay-10 Mo		
OTOMOBİL / P.Cars	484.504	581.993	478.105	487.378	2
TİCARİ ARAÇLAR / CV	343.967	303.187	244.203	319.447	31
* Kamyonet/Pick-Up	300.765	269.995	218.342	276.925	27
* Minibüs/Minibus	34.664	26.458	20.710	36.613	77
* Kamyon/Truck	3.055	1.281	911	1.010	11
* Midibüs/Midibus	985	824	651	298	-54
* Otobüs/Bus	4.498	4.629	3.589	4.601	28
TAŞIT ARAÇLARI /MV TOTAL	828.471	885.180	722.308	806.825	12
TRAKTÖR/F.TRACTOR	14.996	17.014	14.521	12.322	-15
TOTAL	843.467	902.194	736.829	819.147	11

Otomotiv Ana ve Yan Sanayii İhracatı (ABD \$) CBU and CKD Exports - \$

SEKTÖR/SECTOR	2012 Toplam (Total)	2013 Toplam (Total)	2014 Toplam (Total)	2014	2015	2015/2014 (%)
				10 Ay (10 Months)		
Toplam Yan Sanayi/Total Component Industry	8.215.636.677	9.065.017.539	9.498.865.038	8.064.686.153	7.242.543.274	-10
İç ve Dış Lastik / Tyres	1.199.566.307	1.130.005.892	1.124.122.758	983.818.805	823.940.603	-16
Emniyet Camı / Safety Glasses	120.615.918	135.230.310	143.070.356	121.110.904	104.209.267	-14
Motor (Engine)	272.085.582	319.294.885	171.842.213	145.188.750	177.214.437	22
Akümülatör / Batteries	249.831.846	306.451.449	289.068.753	232.186.513	176.000.189	-24
Diğer Aksam ve Parça / Spare Parts&Components	6.373.537.023	7.174.035.002	7.770.760.958	6.582.381.181	5.961.178.779	-9
Toplam Ana Sanayi/Total Vehicle Industry	11.100.115.134	12.491.591.365	13.267.938.482	10.996.971.289	10.537.638.489	-4
Otobüs / Bus	855.424.304	937.790.963	985.801.584	784.862.924	826.818.411	5
Midibüs-Minibüs / Minibus- Minibus	161.806.275	147.769.644	97.674.357	72.599.279	108.854.567	50
Otomobil (P. Cars)	6.068.045.119	6.855.475.590	7.244.622.791	6.081.700.203	5.632.483.682	-7
Kamyon-Kamyonet/HCV-LCV	3.433.310.999	3.918.798.755	4.224.843.707	3.469.481.849	3.441.950.474	-1
Çekici/Truck-Tractor	195.093.508	218.385.732	252.245.237	201.829.758	194.254.199	-4
Römork ve Yarı Römork/Trailer-Semi Trailer	71.336.635	77.907.407	38.396.525	32.411.737	38.432.047	19
Tarım Traktörü/Farm Tractor	315.098.294	335.463.275	424.354.280	354.085.538	294.845.110	-17
Toplam/Total	19.315.751.810	21.556.608.904	22.766.803.520	19.061.657.442	17.780.181.763	-7

Kaynak: Otomotiv Endüstrisi İhracatçıları Birliği



Firma Bazında İhracat (Adet)
Export Of member Companies (Unit)

FİRMALAR Companies	2013	2014	Ocak-Ekim 10 Months	
			2014	2015
OYAK RENAULT	266.508	257.992	209.246	214.640
FORD OTOSAN	208.722	187.921	150.708	206.449
HYUNDAI ASSAN	85.500	179.793	145.420	165.869
TOFAŞ	160.309	142.234	115.917	143.669
TOYOTA	86.908	109.517	94.871	68.637
TÜRK TRAKTÖR	14.402	15.866	13.458	11.680
M. BENZ TÜRK	5.331	3.438	2.642	3.357
HONDA TÜRKİYE	2.121	1.560	1.470	1.770
MAN TÜRKİYE	898	937	787	1.267
HATTAT TARIM	594	1.148	1.063	642
OTOKAR	620	580	410	601
TEMSA GLOBAL	663	423	268	321
A.I.O.S.	770	748	541	193
KARSAN	10.120	37	28	52
BMC	1	0	0	0
GENEL TOPLAM	843.467	902.194	736.829	819.147

Kaynak: OSD

Sektör Bazında İhracat (\$)
Exports on Sectorial Basis

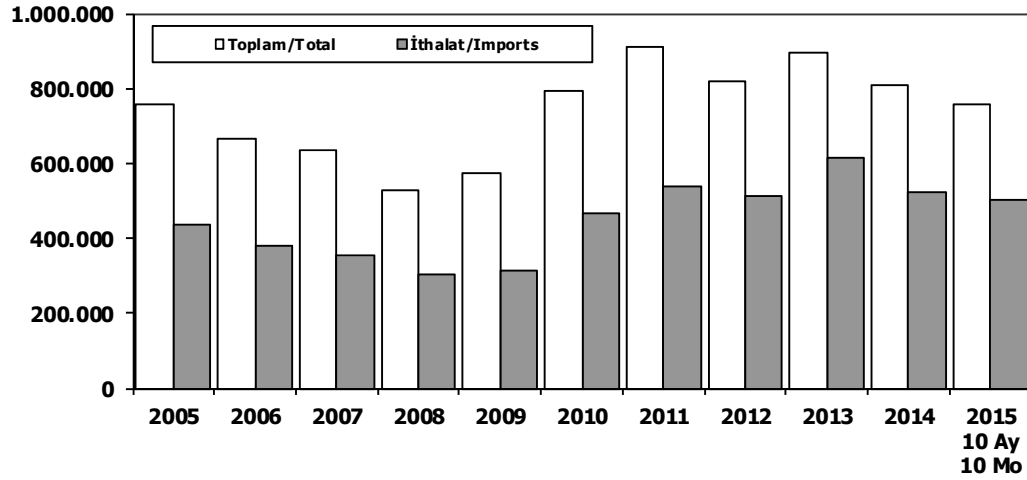
SEKTÖRLER	EKİM				OCAK-EKİM			
	2014	2015	Değişim ('15/'14)	Pay(15) (%)	2014	2015	Değişim ('15/'14)	Pay(15) (%)
Otomotiv Endüstrisi	1.712.962	2.030.820	19	16	18.628.420	17.399.497	-7	15
Hazırgiyim ve Konfeksiyon	1.498.983	1.595.901	6	13	15.858.923	14.180.325	-11	12
Kimyevi Maddeler ve Mamulleri	1.493.412	1.308.444	-12	11	14.878.526	12.855.425	-14	11
Elektrik Elektronik ve Hizmet	1.046.417	1.050.302	0	9	9.960.851	8.635.521	-13	7
Çelik	1.041.111	771.978	-26	6	11.129.097	8.468.563	-24	7
Tekstil ve Hammaddeleri	756.774	756.423	0	6	7.480.013	6.669.914	-11	6
Demir ve Demir Dışı Metaller	562.723	570.524	1	5	5.949.416	5.223.850	-12	4
Hububat, Bakliyat, Yağlı Tohumlar ve Mam.	564.233	588.559	4	5	5.463.145	4.980.469	-9	4
Makine ve Aksamları	495.849	460.431	-7	4	5.019.393	4.540.108	-10	4
Mobilya, Kağıt ve Orman Ürünleri	348.688	366.343	5	3	3.728.263	3.387.764	-9	3
T O P L A M (TİM+TUİK*)	12.534.832	12.351.289	-1	100	130.916.740	119.644.602	-9	100

Kaynak: TİM

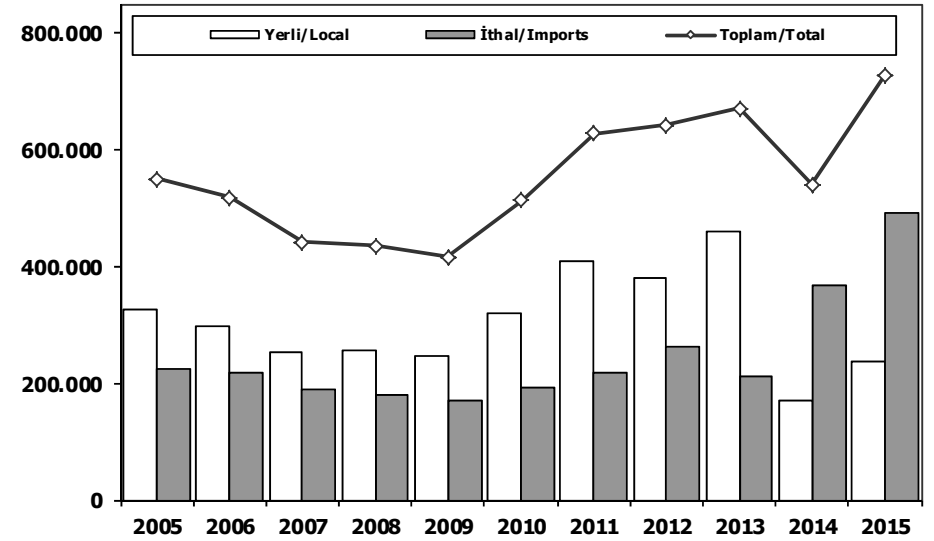
First 3 Sectors:

- 1- Transport Vehicle and Component Industry
- 2- Ready Wear and Confection
- 3- Chemical Articles and Products

Toplam Pazar (Otomobil+T.Araç) Total Market (P.Cars+C.V)



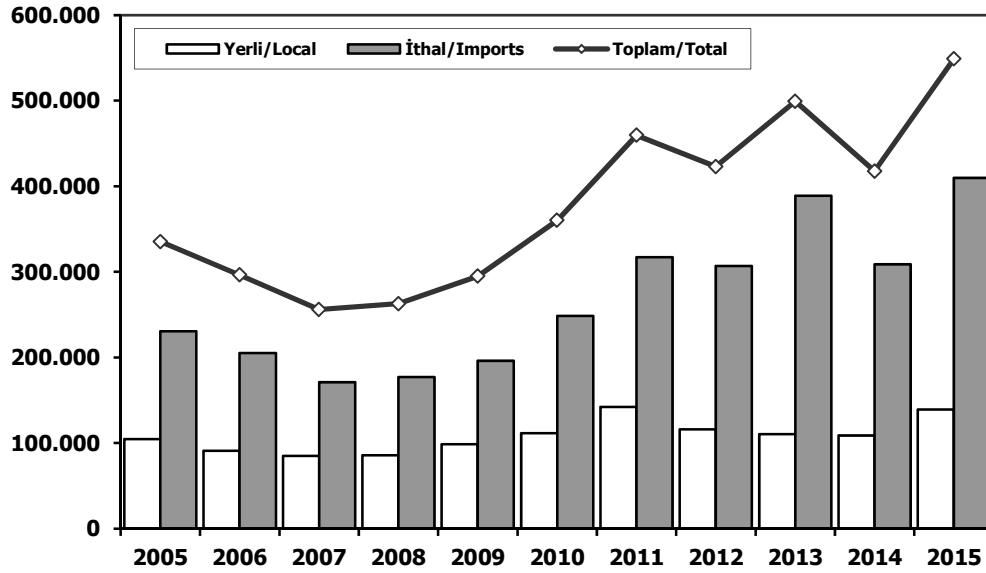
Hafif Araçlar Pazarı (2005-2015 Ocak-Ekim) LV Market (2005-2015 January-October)



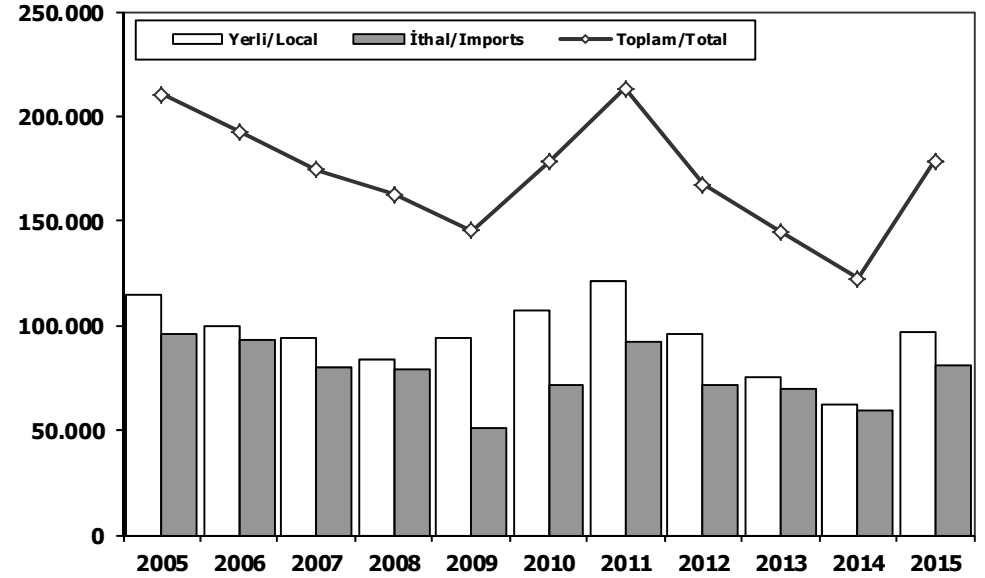
	2005	2006	2007	2008	2009	2010	2011	2012	2013	2014	2014 10 Ay 10 Mo	2015 10 Ay 10 Mo
Toplam/Total	758.537	665.515	634.206	526.544	575.869	793.172	910.867	817.620	893.124	807.486	569.608	759.715
İthalat/Imports	436.033	382.460	355.752	306.087	313.921	465.408	538.532	511.694	615.609	524.641	378.018	501.368
İthalat/Imports (%)	57	57	56	58	55	59	59	63	69	65	66	66

	2005	2006	2007	2008	2009	2010	2011	2012	2013	2014	2015
Yerli/Local	326.321	298.593	251.545	256.326	247.493	320.076	409.556	379.009	458.931	171.421	236.428
İthal/Imports	223.889	219.514	190.605	178.978	169.366	192.748	218.506	263.316	211.642	368.650	490.815
Toplam/Total	550.210	518.107	442.150	435.304	416.859	512.824	628.062	642.325	670.573	540.071	727.243
İthalat/Imports (%)	41	42	43	41	41	38	35	41	32	68	67

Otomobil Pazarı (2005-2015 Ocak-Ekim) P.Cars Market (2005-2015 January-October)

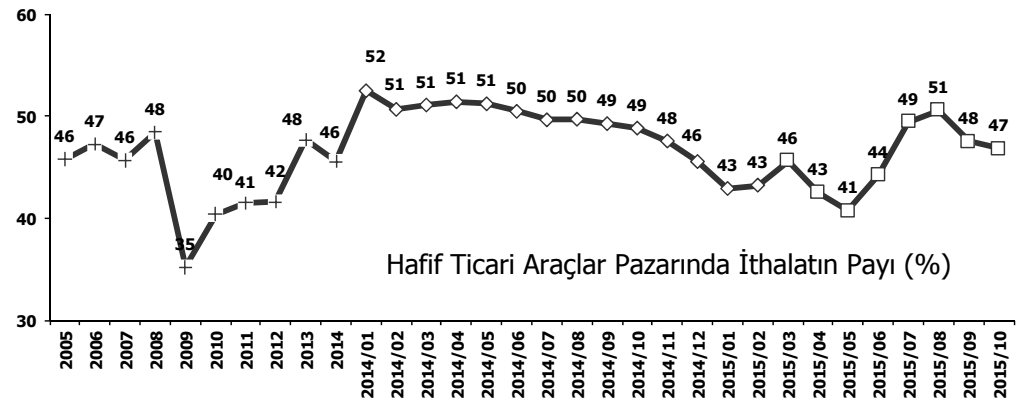
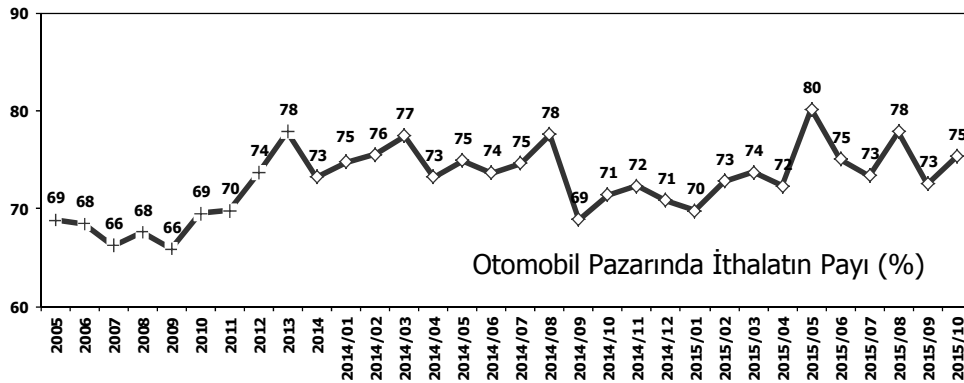


Hafif Ticari Araçlar Pazarı (2005-2015 Ocak-Ekim) Light Commercial Vehicle Market (2005-2015 January-October)



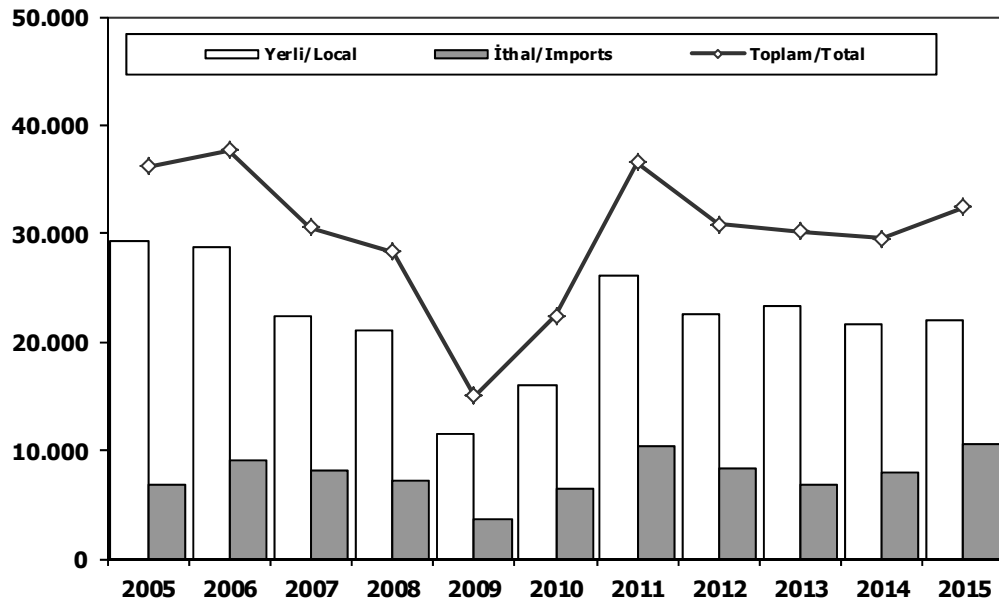
	2005	2006	2007	2008	2009	2010	2011	2012	2013	2014	2015
Yerli/Local	104.764	91.004	84.850	85.708	98.793	111.597	142.257	115.922	110.263	108.721	139.228
İthal/Imports	230.545	205.387	171.227	177.210	196.067	248.665	317.354	307.135	389.076	308.861	409.631
Toplam/Total	335.309	296.391	256.077	262.918	294.860	360.262	459.611	423.057	499.339	417.582	548.859
İthalat/Imports (%)	69	69	67	67	66	69	69	73	78	74	75

	2005	2006	2007	2008	2009	2010	2011	2012	2013	2014	2015
Yerli/Local	114.750	99.601	94.128	83.658	93.955	106.909	121.059	95.720	75.165	62.700	97.200
İthal/Imports	95.776	93.206	80.318	79.116	51.426	71.411	92.202	71.874	69.855	59.789	81.184
Toplam/Total	210.526	192.807	174.446	162.774	145.381	178.320	213.261	167.594	145.020	122.489	178.384
İthalat/Imports (%)	45	48	46	49	35	40	43	43	48	49	46



Ağır Ticari Araçlar Pazarı (2005-2015 Ocak-Ekim)

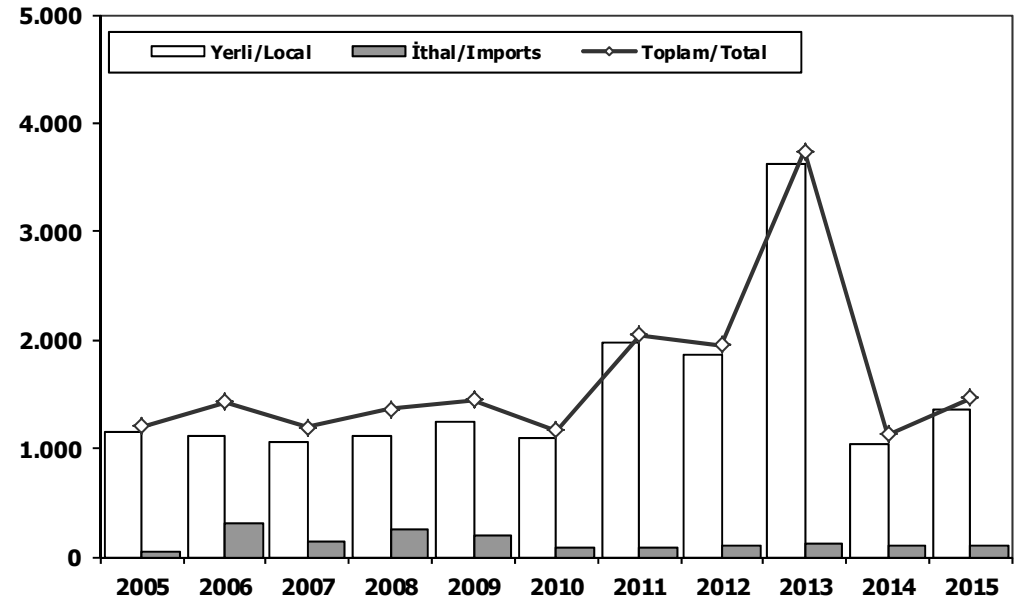
HCV Market (2005-2015 January-October)



	2005	2006	2007	2008	2009	2010	2011	2012	2013	2014	2015
Yerli/Local	29.325	28.706	22.448	21.105	11.465	15.932	26.209	22.568	23.311	21.617	21.919
İthal/Imports	6.820	8.991	8.142	7.177	3.575	6.518	10.310	8.243	6.841	7.920	10.553
Toplam/Total	36.145	37.697	30.590	28.282	15.040	22.450	36.519	30.811	30.152	29.537	32.472
İthalat/Imports (%)	19	24	27	25	24	29	28	27	23	27	32

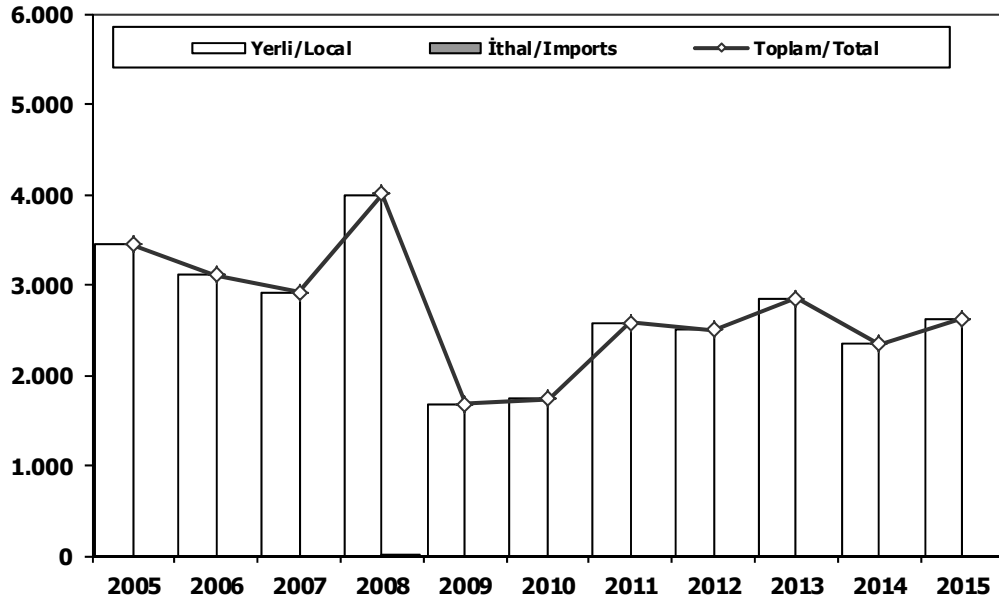
Otobüs Pazarı (2005-2015 Ocak-Ekim)

Bus Market (2005-2015 January-October)

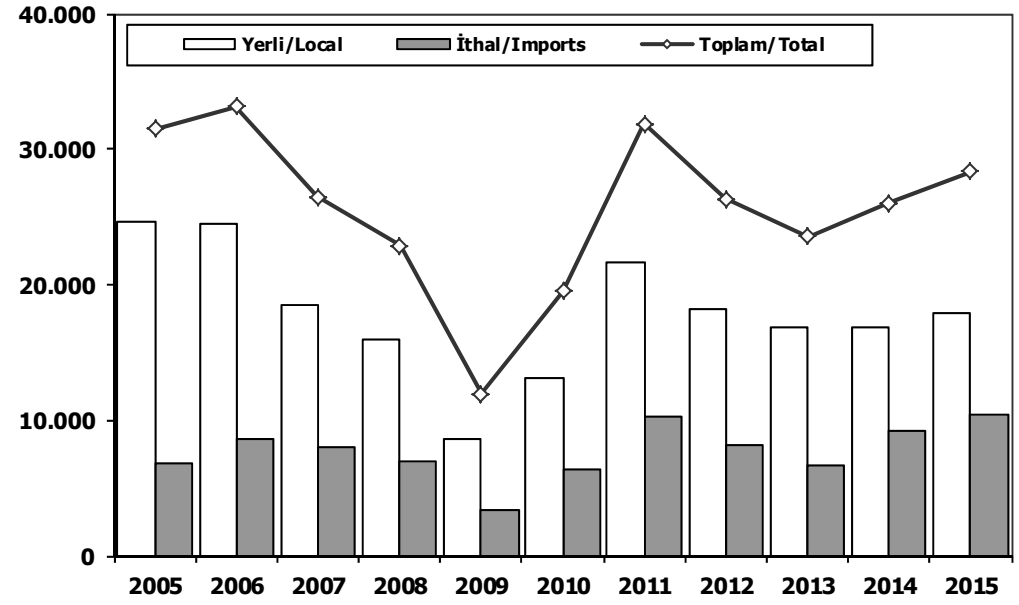


	2005	2006	2007	2008	2009	2010	2011	2012	2013	2014	2015
Yerli/Local	1.160	1.119	1.057	1.108	1.243	1.090	1.973	1.856	3.618	1.031	1.363
İthal/Imports	42	312	137	254	202	78	75	99	125	100	100
Toplam/Total	1.202	1.431	1.194	1.362	1.445	1.168	2.048	1.955	3.743	1.131	1.463
İthalat/Imports (%)	3	22	11	19	14	7	4	5	3	9	7

Midibüs Pazarı (2005-2015 Ocak-Ekim) (7-9 mt / 25-35 Kişilik)
Midibus (2005-2015 January-October) Market (7-9 mt / 25-35 Passengers)



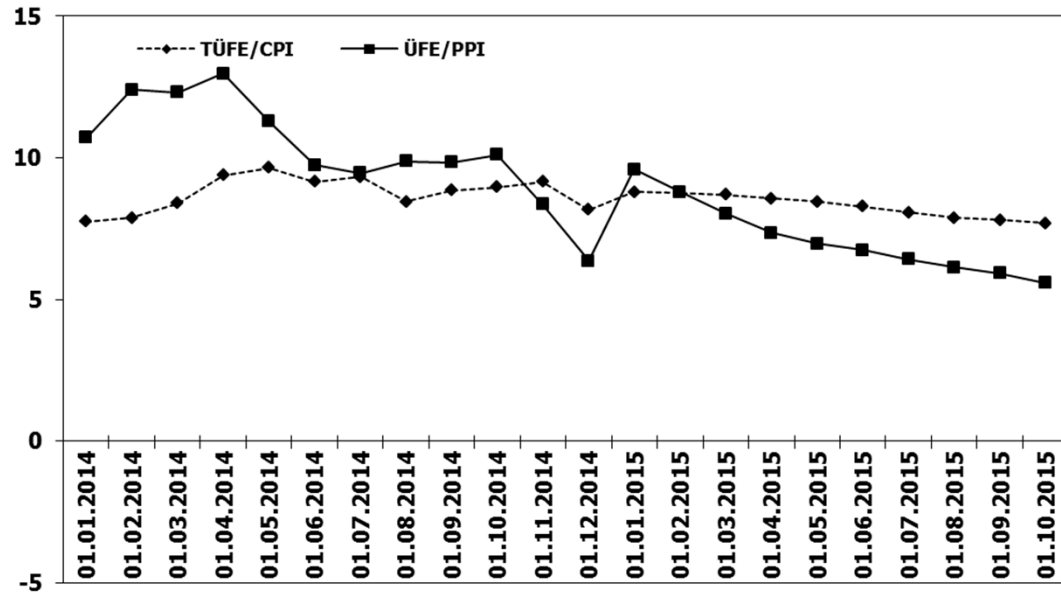
Kamyon Pazarı (2005-2015 Ocak-Ekim)
Truck Market (2005-2015 January-October)



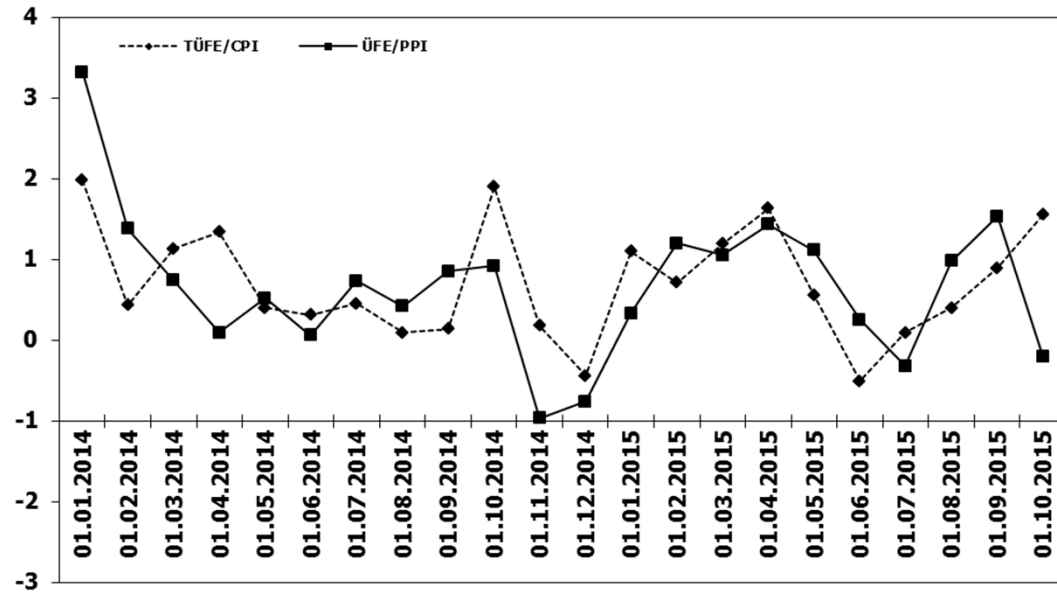
	2005	2006	2007	2008	2009	2010	2011	2012	2013	2014	2015
Yerli/Local	3.449	3.103	2.913	3.995	1.676	1.733	2.574	2.497	2.847	2.339	2.620
İthal/Imports	0	0	0	11	0	0	0	0	0	0	0
Toplam/Total	3.449	3.103	2.913	4.006	1.676	1.733	2.574	2.497	2.847	2.339	2.620
İthalat/Imports (%)	0	0	0	0	0	0	0	0	0	0	0

	2005	2006	2007	2008	2009	2010	2011	2012	2013	2014	2015
Yerli/Local	24.716	24.484	18.478	16.002	8.546	13.109	21.662	18.215	16.846	16.799	17.936
İthal/Imports	6.778	8.679	8.005	6.912	3.373	6.440	10.235	8.144	6.716	9.268	10.453
Toplam/Total	31.494	33.163	26.483	22.914	11.919	19.549	31.897	26.359	23.562	26.067	28.389
İthalat/Imports (%)	22	26	30	30	28	33	32	31	29	36	37

TÜFE ve ÜFE'nin Yıllık Değişimi (%) CPI and PPI Yearly Changes (%)



TÜFE ve ÜFE'nin Aylık Değişimi (%) CPI and PPI Monthly Changes (%)



2015 Otomotiv Sanayii Dış Satışlar 2015 Automotive Industry Exports Sales

TIPLER-Types	Ocak January	Şubat February	Mart March	Nisan April	Mayıs May	Haziran June	Temmuz July	Ağustos August	Eylül September	Ekim October	Kasım November	Aralık December	TOPLAM Total
Otomobil	48.533	51.237	58.872	52.089	36.570	56.556	37.308	35.805	51.704	58.704	0	0	487.378
OTOMOBİL-Pass. Car	48.533	51.237	58.872	52.089	36.570	56.556	37.308	35.805	51.704	58.704	0	0	487.378
TİCARİ ARAC	30.740	29.357	31.084	32.630	22.521	36.069	36.536	20.952	38.396	41.162	0	0	319.447
* KAMYONET-Pick Up	26.679	25.609	26.296	27.006	18.544	31.186	31.991	17.878	34.169	37.567	0	0	276.925
* KAMYON-Truck	88	13	58	127	93	112	151	130	123	115	0	0	1.010
* MIDİBÜS-Midibus	16	40	19	18	31	33	37	24	45	35	0	0	298
* MINİBÜS-Minibus	3.642	3.262	4.224	4.983	3.392	4.213	3.950	2.474	3.590	2.883	0	0	36.613
* OTOBÜS-Bus	315	433	487	496	461	525	407	446	469	562	0	0	4.601
Traktör	1.342	1.231	1.268	949	939	1.203	1.211	1.393	1.447	1.339	0	0	12.322
TRAKTÖR-F.Tractor	1.342	1.231	1.268	949	939	1.203	1.211	1.393	1.447	1.339	0	0	12.322
TOPLAM-Total	80.615	81.825	91.224	85.668	60.030	93.828	75.055	58.150	91.547	101.205	0	0	819.147

Otomobil

FİRMALAR-Companies	Ocak January	Şubat February	Mart March	Nisan April	Mayıs May	Haziran June	Temmuz July	Ağustos August	Eylül September	Ekim October	Kasım November	Aralık December	TOPLAM Total
FORD OTOSAN	837	1.356	1.289	1.793	1.107	1.264	2.296	1.087	1.713	1.581			14.323
HONDA TÜRKİYE	0	89	352	35	270	250	473	153	88	60			1.770
HYUNDAI ASSAN	13.650	15.500	18.420	17.400	16.900	18.393	8.700	18.370	16.506	19.716			163.555
OYAK RENAULT	21.671	24.980	28.107	23.420	11.183	26.268	19.228	11.321	22.164	26.298			214.640
TOFAŞ	3.163	3.138	2.941	2.313	1.826	3.509	1.796	613	2.405	2.749			24.453
TOYOTA	9.212	6.174	7.763	7.128	5.284	6.872	4.815	4.261	8.828	8.300			68.637
TOPLAM-Total	48.533	51.237	58.872	52.089	36.570	56.556	37.308	35.805	51.704	58.704	0	0	487.378

Kamyonet

FİRMALAR-Companies	Ocak January	Şubat February	Mart March	Nisan April	Mayıs May	Haziran June	Temmuz July	Ağustos August	Eylül September	Ekim October	Kasım November	Aralık December	TOPLAM Total
FORD OTOSAN	16.006	14.029	14.423	14.428	8.842	15.960	17.128	12.451	19.347	22.708			155.322
HYUNDAI ASSAN	0	0	0	0	270	402	253	519	386	473			2.303
OTOKAR	4	2	18	0	33	0	0	0	27	0			84
TOFAŞ	10.669	11.578	11.855	12.578	9.399	14.824	14.610	4.908	14.409	14.386			119.216
TOPLAM-Total	26.679	25.609	26.296	27.006	18.544	31.186	31.991	17.878	34.169	37.567	0	0	276.925

Minibüs

FİRMALAR-Companies	Ocak January	Şubat February	Mart March	Nisan April	Mayıs May	Haziran June	Temmuz July	Ağustos August	Eylül September	Ekim October	Kasım November	Aralık December	TOPLAM Total
FORD OTOSAN	3.641	3.262	4.223	4.980	3.374	4.201	3.946	2.474	3.590	2.879			36.570
HYUNDAI ASSAN	0	0	0	0	3	4	1	0	0	3			11
KARSAN	1	0	1	3	15	8	3	0	0	1			32
TOPLAM-Total	3.642	3.262	4.224	4.983	3.392	4.213	3.950	2.474	3.590	2.883	0	0	36.613

Kamyon

FİRMALAR-Companies	Ocak January	Şubat February	Mart March	Nisan April	Mayıs May	Haziran June	Temmuz July	Ağustos August	Eylül September	Ekim October	Kasım November	Aralık December	TOPLAM Total
FORD OTOSAN	7	2	2	16	19	25	49	25	33	56			234
KARSAN	0	2	0	0	0	0	0	1	0	0			3
M. BENZ TÜRK	81	9	56	111	74	87	102	104	90	59			773
TOPLAM-Total	88	13	58	127	93	112	151	130	123	115	0	0	1.010

Midibüs

FİRMALAR-Companies	Ocak January	Şubat February	Mart March	Nisan April	Mayıs May	Haziran June	Temmuz July	Ağustos August	Eylül September	Ekim October	Kasım November	Aralık December	TOPLAM Total
A.I.O.S.	8	14	2	3	10	1	2	1	27	2			70
KARSAN	0	0	0	0	0	1	0	0	2	14			17
OTOKAR	8	25	17	14	21	30	35	23	16	19			208
TEMSA GLOBAL	0	1	0	1	0	1	0	0	0	0			3
TOPLAM-Total	16	40	19	18	31	33	37	24	45	35	0	0	298

Otobüs

FİRMALAR-Companies	Ocak January	Şubat February	Mart March	Nisan April	Mayıs May	Haziran June	Temmuz July	Ağustos August	Eylül September	Ekim October	Kasım November	Aralık December	TOPLAM Total
A.I.O.S.	1	1	23	23	3	22	7	12	8	23			123
M. BENZ TÜRK	204	252	247	293	289	309	199	298	188	305			2.584
MAN TÜRKİYE	107	153	188	140	133	96	104	77	114	155			1.267
OTOKAR	3	5	9	24	12	67	67	21	81	20			309
TEMSA GLOBAL	0	22	20	16	24	31	30	38	78	59			318
TOPLAM-Total	315	433	487	496	461	525	407	446	469	562	0	0	4.601

Traktör

FİRMALAR-Companies	Ocak January	Şubat February	Mart March	Nisan April	Mayıs May	Haziran June	Temmuz July	Ağustos August	Eylül September	Ekim October	Kasım November	Aralık December	TOPLAM Total
HATTAT TARIM	33	88	39	49	57	68	38	91	142	37			642
TÜRK TRAKTÖR	1.309	1.143	1.229	900	882	1.135	1.173	1.302	1.305	1.302			11.680
TOPLAM-Total	1.342	1.231	1.268	949	939	1.203	1.211	1.393	1.447	1.339	0	0	12.322

2015 Yılı İthal Hafif Araç Satışları 2015 Light Vehicles Import Sales

2015 YILI İTHAL OTOMOBİL SATIŞLARI / P.Cars Import 2015

	2014 TOPLAMI 2014 Total	1	2	3	4	5	6	7	8	9	10	11	12	2015 TOPLAMI 2015 Total
VOLKSWAGEN	84.646	4.491	6.942	9.711	10.487	10.793	8.922	10.620	10.473	7.023	7.254			86.716
FORD	35.682	1.101	2.782	3.636	4.681	4.678	4.645	3.987	4.081	2.659	2.500			34.750
OPEL	39.255	952	2.239	3.964	4.753	3.943	4.460	3.378	4.069	2.438	2.756			32.952
DACIA	27.897	1.709	2.289	2.968	2.872	2.918	3.661	3.362	3.552	2.198	2.339			27.868
RENAULT	25.572	653	1.309	2.874	1.927	3.566	4.002	2.533	2.533	1.795	3.217			24.409
B.M.W	26.174	1.219	1.536	2.369	2.717	2.896	2.652	3.066	2.881	1.614	2.642			23.592
MERCEDES	23.100	417	1.384	2.200	2.135	2.101	3.558	3.283	3.206	2.585	2.230			23.099
NISSAN	19.422	949	1.372	1.859	2.304	2.402	2.305	2.307	2.209	1.851	1.853			19.411
PEUGEOT	17.026	846	1.110	2.039	2.635	2.739	2.086	1.973	1.648	1.269	1.048			17.393
HYUNDAI	21.685	784	1.011	1.884	2.259	2.392	2.423	1.676	2.175	2.077	2.039			18.720
SKODA	14.537	515	1.568	2.120	2.355	2.162	2.086	1.803	1.709	1.202	1.334			16.854
AUDI	17.809	610	1.103	1.685	2.006	1.738	1.604	1.609	1.603	1.605	1.076			14.639
CITROEN	14.389	683	941	1.522	2.077	1.406	1.810	1.388	1.658	915	472			12.872
SEAT	12.697	164	1.103	1.496	1.740	1.768	1.679	1.586	1.039	967				13.394
KIA	11.017	330	676	1.183	1.245	1.120	1.185	958	994	1.027	967			9.685
TOYOTA	10.146	327	535	1.070	1.547	1.006	757	916	997	510	900			8.565
VOLVO	6.060	295	290	657	751	856	701	453	452	440	396			5.291
FIAT	6.179	248	377	481	617	382	520	435	478	353	291			4.182
JEEP	1.960	239	281	308	383	268	325	264	253	148	118			2.587
HONDA	3.269	98	241	273	152	193	211	422	569	441	785			3.385
SUBARU	1.402	65	40	261	176	144	140	130	143	130	141			1.370
MINI (İngiliz)	1.071	21	47	139	136	143	135	177	120	124	136			1.178
LAND ROVER	1.207	31	87	240	94	132	148	66	79	100	140			1.117
MITSUBISHI	1.159	64	64	92	149	105	119	131	134	97	75			1.030
MAZDA	1.291	27	80	49	87	130	181	157	144	263	190			1.308
ALFA ROMEO	967	34	59	56	76	134	79	46	60	34	36			614
SSANGYONG	531	44	21	31	29	49	163	94	65	25	16			537
PROTON	707	55	40	67	70	84	70	50	25	10	10			481
PORSCHE	588	45	48	53	47	55	34	46	73	71	65			537
CHERY	325	26	38	46	39	35	32	29	26	26	35			332
JAGUAR	52	0	25	50	7	6	8	31	17	32	51			227
TATA	126	21	24	21	19	23	19	3	3	17	7			157
SUZUKI	958	27	17	20	28	14	2	6	13	13	12			152
SMART	76	4	3	10	11	5	7	4	36	5	0			85
MASERATI	83	2	2	3	9	9	7	5	4	6	3			50
INFINITI	6	1	1	1	0	10	7	8	1	1	6			36
GEELY	95	4	7	3	6	3	1	0	1	0	0			25
BENTLEY	21	0	4	1	0	3	1	1	1	0	0			11
LAMBORGHINI	2	1	1	2	1	0	1	0	0	0	0			6
FERRARI	11	0	0	1	2	2	0	0	1	2	1			9
LEXUS	0	0	0	0	0	0	0	0	3	0	0			3
LANCIA	210	0	2	0	0	0	0	0	0	0	0			2
CHEVROLET	572	0	0	0	0	0	0	0	0	0	0			0
TOPLAM	429.982	17.102	29.699	45.445	50.741	50.385	50.835	47.096	48.075	34.145	36.108	0	0	409.631

2015 YILI İTHAL HAFİF TİCARİ ARAÇ SATIŞLARI / Light Commercial Vehicles Import 2015

	2014 TOPLAMI 2014 Total	1	2	3	4	5	6	7	8	9	10	11	12	2015 TOPLAMI 2015 Total
VOLKSWAGEN	24.001	1.336	2.575	3.182	2.680	2.054	2.049	3.606	3.084	2.749	2.258			25.573
RENAULT	8.716	501	673	1.104	1.030	923	1.459	1.182	1.437	972	1.121			10.402
FIAT	7.664	347	491	782	815	786	685	531	1.022	729	751			6.939
MERCEDES	8.028	391	424	1.009	654	642	683	713	924	628	629			6.697
PEUGEOT	5.832	303	403	704	824	738	708	655	889	424	327			5.975
DACIA	6.572	250	242	696	642	583	731	563	703	546	483			5.439
CITROEN	6.048	269	392	730	684	301	432	777	443	723	128			4.879
KIA	2.057	147	221	136	444	373	373	367	613	373	357			3.404
MITSUBISHI	4.188	390	324	518	246	205	191	321	334	212	240			2.981
IVECO	2.524	117	139	282	235	210	224	131	257	252	190			2.037
HYUNDAI	1.565	89	104	164	208	142	113	181	138	84	128			1.351
TOYOTA	1.670	73	45	255	207	299	177	55	26	9	727			1.873
FORD	333	46	167	169	273	289	256	554	609	301	258			2.922
SSANGYONG	626	31	34	69	71	8	13	17	13	10	6			272
ISUZU	1.728	27	19	32	59	25	15	13	17	15	18			240
TATA	290	22	21	23	21	19	21	19	17	19	11			193
NISSAN	275	1	0	0	2	0	0	4	0	0	0			7
MAZDA	9	0	0	0	0	0	0	0	0	0	0			0
TOPLAM	82.126	4.340	6.274	9.855	9.095	7.597	8.130	9.689	10.526	8.046	7.632	0	0	81.184