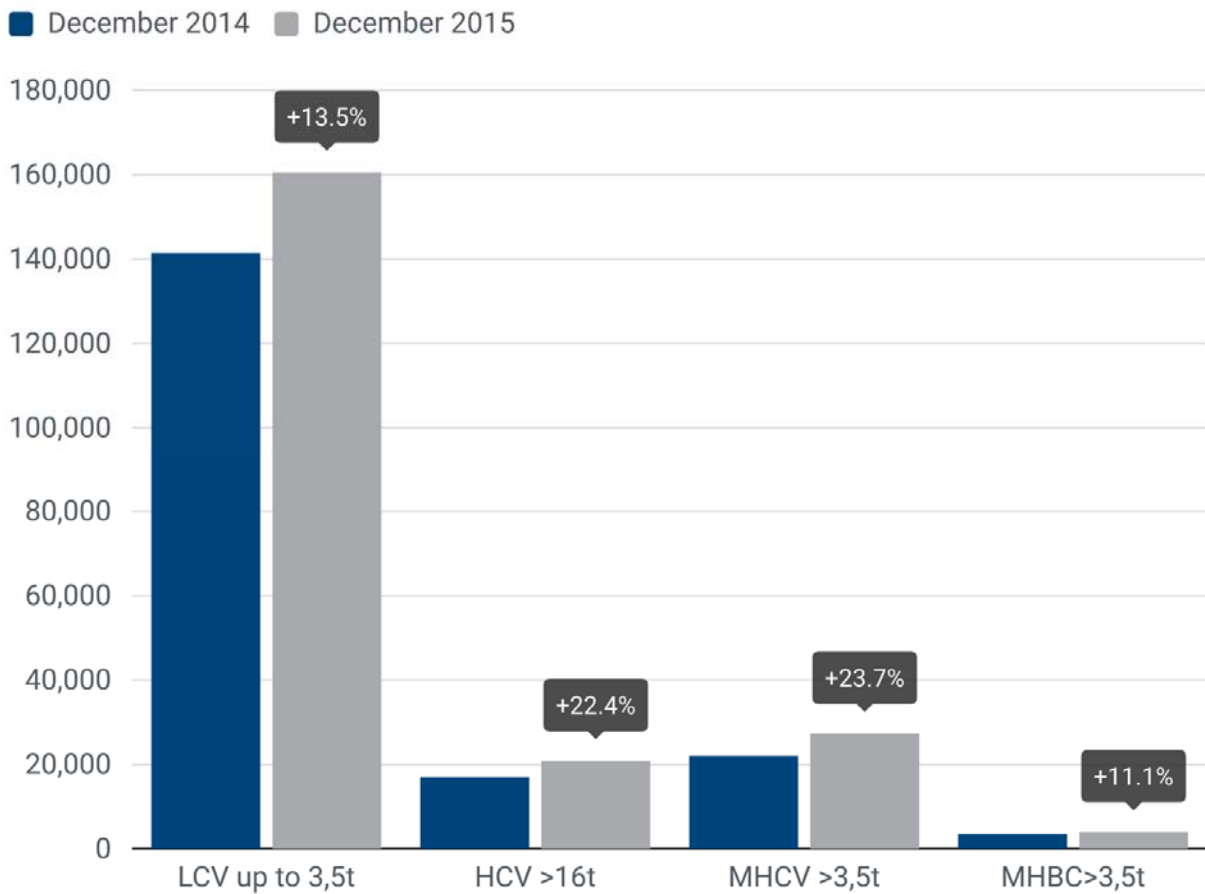


**PRESS EMBARGO: 8.00 AM (7.00 AM GMT), 26 January 2016**

**NEW COMMERCIAL VEHICLE REGISTRATIONS  
EUROPEAN UNION<sup>1</sup>**

December 2015



**Next press release: Wednesday 24 February 2016**

<sup>1</sup> Data for Malta unavailable

## Commercial vehicle registrations: +12.4% in 2015; +14.8% in December

### Total new commercial vehicles

**In December 2015**, EU demand for new commercial vehicles registered a strong increase (+14.8%), totalling 191,826 units over the month and marking one year of consecutive growth. Growth was significantly sustained across all commercial vehicle segments. Italy (+23.2%), Spain (+23.0%), the UK (+20.3%) ended the year extremely strong by posting double digit percentage gains in December, followed by France (+9.4%) and Germany (+8.7%).

**In 2015**, the EU market showed a consistent uplift (+12.4%) and rose for the third year in a row, exceeding two million commercial vehicles registered (2,079,322). During the year, Spain (+36.4%) showed the most significant increase, followed by the UK (+16.7%), Italy (+13.2%), Germany (+4.3%) and France (+3.1%) – all performing better than 2014.

### New light commercial vehicles (LCV) up to 3.5 tonnes

**In December 2015**, new registrations of light commercial vehicles totalled 160,518 units, up (+13.5%) compared to December 2014. This marked the 28<sup>th</sup> consecutive month of growth in the segment. Italy (+23.9%), Spain (+23.8%), the UK (+14.6%), France (+8.7%) and Germany (+5.6%) all positively contributed to this upturn.

**In 2015**, 1,713,850 new vans were registered in the EU (+11.6%). All major markets saw their demand for vans increase over the year, in particular Spain (+36.1%), the UK (+15.6%) and Italy (+12.4%).

### New heavy commercial vehicles (HCV) over 16 tonnes<sup>2</sup>

**December 2015** results show a significant uplift in the heavy truck segment (+22.4%), which saw 20,839 new vehicles being registered. The UK (+97.1%) largely contributed to this positive outcome, almost doubling its registrations compared to December 2014.

**In 2015**, the new heavy truck market in the EU was up by 19.4%, reaching 260,135 units. Spain (+38.7%), the UK (+32.1%), Italy (+25.3%), France (+12.7%) and Germany (+5.3%) saw demand for heavy trucks increase, supporting the overall upturn in the region. Noteworthy are the positive contributions from the Netherlands (+34.4%) and Poland (+31.7%).

### New medium and heavy commercial vehicles (MHCV) over 3.5 tonnes<sup>3</sup>

**In December 2015**, new truck registrations in the EU totalled 27,315 units, up (+23.7%) compared to December 2014. The UK market finished the year strongly (+75.6%) after showing decline in October. Also Spain (+19.5%), Germany (+19.5%), France (+13.2%) and Italy (+10.1%) showed large upturns at the end of 2015.

**In 2015**, 325,689 new trucks (+16.2%) were registered in the EU. Looking at the five major markets, Spain (+38.4%), the UK (+24.5%), Italy (+21.3%) and France (+10.3%) posted the highest increases over the year.

### New medium and heavy buses & coaches (MHBC) over 3.5 tonnes

**In December 2015**, new bus and coach registrations increased (+11.1%) compared to December 2014, totalling roughly four thousand units. Italy (+79.1%), France (+33.0%), the UK (+32.6%) and Germany (+11.6%) largely contributed to the overall expansion.

**In 2015**, the EU market increased (+17.8%), totalling 39,783 new buses and coaches. Demand was primarily driven by Spain (+38.0%), the UK (+27.2%) and France (+24.6%), followed by Italy (+13.3%) and Germany (+8.6%). Significant growth was also recorded for the Romanian market (+101.1%).

---

<sup>2</sup> Excluding heavy buses & coaches

<sup>3</sup> Excluding buses & coaches

# P R E S S   R E L E A S E

**PRESS EMBARGO FOR ALL DATA :**

**8.00 AM (7.00 AM GMT), 26 January 2016**

## PROVISIONAL

EU<sup>1</sup>+EFTA COUNTRIES NEW REGISTRATION FIGURES BY MARKET  
NEW LIGHT COMMERCIAL VEHICLES up to 3.5t<sup>2</sup>

26/01/16

	December '15	December '14	% Change	Jan-Dec '15	Jan-Dec '14	% Change
AUSTRIA	2,588	2,245	15.3%	32,862	31,168	5.4%
BELGIUM	4,385	3,861	13.6%	61,208	53,373	14.7%
BULGARIA	581	385	50.9%	4,553	3,972	14.6%
CROATIA	501	271	84.9%	6,695	5,206	28.6%
CYPRUS	124	85	45.9%	1,443	1,145	26.0%
CZECH REPUBLIC	1,922	1,528	25.8%	17,131	13,165	30.1%
DENMARK	3,317	3,034	9.3%	32,479	28,498	14.0%
ESTONIA	222	199	11.6%	3,580	2,918	22.7%
FINLAND	1,022	885	15.5%	11,431	10,625	7.6%
FRANCE	39,769	36,583	8.7%	377,738	370,362	2.0%
GERMANY	22,427	21,233	5.6%	237,902	228,323	4.2%
GREECE	574	643	-10.7%	5,653	4,856	16.4%
HUNGARY	2,291	1,985	15.4%	17,515	15,937	9.9%
IRELAND	236	157	50.3%	23,722	16,732	41.8%
ITALY <sup>3</sup>	14,200	11,465	23.9%	132,186	117,617	12.4%
LATVIA	193	301	-35.9%	2,347	2,539	-7.6%
LITHUANIA	219	162	35.2%	2,367	1,997	18.5%
LUXEMBOURG	292	269	8.6%	3,807	3,357	13.4%
NETHERLANDS	3,410	2,714	25.6%	57,717	51,761	11.5%
POLAND	6,347	5,170	22.8%	53,285	45,577	16.9%
PORTUGAL	3,728	3,722	0.2%	30,858	26,166	17.9%
ROMANIA	1,287	915	40.7%	11,066	9,903	11.7%
SLOVAKIA	720	565	27.4%	7,297	5,630	29.6%
SLOVENIA	780	497	56.9%	7,452	6,978	6.8%
SPAIN	14,472	11,686	23.8%	154,928	113,863	36.1%
SWEDEN	4,501	4,331	3.9%	44,798	41,933	6.8%
UNITED KINGDOM	30,410	26,529	14.6%	371,830	321,686	15.6%
<b>EUROPEAN UNION<sup>1</sup></b>	<b>160,518</b>	<b>141,420</b>	<b>13.5%</b>	<b>1,713,850</b>	<b>1,535,287</b>	<b>11.6%</b>
<b>EU15<sup>4</sup></b>	<b>145,331</b>	<b>129,357</b>	<b>12.3%</b>	<b>1,579,119</b>	<b>1,420,320</b>	<b>11.2%</b>
<b>EU12<sup>5</sup></b>	<b>15,187</b>	<b>12,063</b>	<b>25.9%</b>	<b>134,731</b>	<b>114,967</b>	<b>17.2%</b>
<b>ICELAND<sup>6</sup></b>	<b>104</b>	<b>83</b>	<b>25.3%</b>	<b>1,355</b>	<b>858</b>	<b>57.9%</b>
<b>NORWAY</b>	<b>4,465</b>	<b>2,643</b>	<b>68.9%</b>	<b>33,254</b>	<b>29,611</b>	<b>12.3%</b>
<b>SWITZERLAND</b>	<b>2,608</b>	<b>2,335</b>	<b>11.7%</b>	<b>31,018</b>	<b>28,822</b>	<b>7.6%</b>
<b>EFTA</b>	<b>7,177</b>	<b>5,061</b>	<b>41.8%</b>	<b>65,627</b>	<b>59,291</b>	<b>10.7%</b>
<b>EU+EFTA</b>	<b>167,695</b>	<b>146,481</b>	<b>14.5%</b>	<b>1,779,477</b>	<b>1,594,578</b>	<b>11.6%</b>
<b>WESTERN EUROPE (EU15+EFTA)</b>	<b>152,508</b>	<b>134,418</b>	<b>13.5%</b>	<b>1,644,746</b>	<b>1,479,611</b>	<b>11.2%</b>

SOURCE: NATIONAL AUTOMOBILE MANUFACTURERS' ASSOCIATIONS

<sup>1</sup> Data for Malta unavailable

<sup>2</sup> Including Light Buses & Coaches

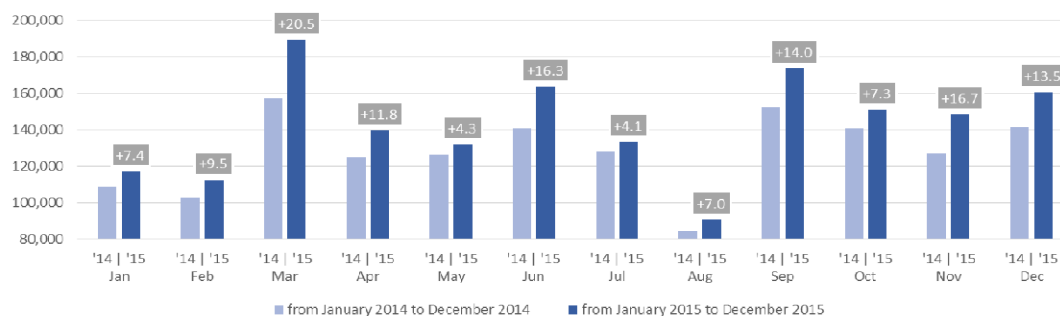
<sup>3</sup> ANFA estimates

<sup>4</sup> Member States before the 2004 enlargement

<sup>5</sup> Member States having joined the EU since 2004 (data for Malta unavailable)

<sup>6</sup> AAA estimates

New light commercial vehicle registrations in the EU - 12 month trend



For further information, please contact: Ms Francesca Piazza - Statistics & Communications Advisor - E-mail: fp@acea.be - Tel. (32) 2 738 73 55

This information is available on the ACEA website: <http://www.acea.be>

Next press release on Commercial Vehicles to be issued on Wednesday 24 February 2016

# P R E S S   R E L E A S E

**PRESS EMBARGO FOR ALL DATA :**

**8.00 AM (7.00 AM GMT), 26 January 2016**

## PROVISIONAL

EU<sup>1</sup>+EFTA COUNTRIES NEW REGISTRATION FIGURES BY MARKET  
NEW HEAVY COMMERCIAL VEHICLES of 16t and over<sup>2</sup>

26/01/16

	December '15	December '14	% Change	Jan-Dec '15	Jan-Dec '14	% Change
AUSTRIA	310	246	26.0%	6,715	6,300	6.6%
BELGIUM	366	343	6.7%	6,819	6,307	8.1%
BULGARIA	n.a	n.a	n.a	n.a	n.a	n.a
CROATIA	51	42	21.4%	779	759	2.6%
CYPRUS	4	2	100.0%	15	11	36.4%
CZECH REPUBLIC <sup>3</sup>	732	543	34.8%	8,793	7,463	17.8%
DENMARK	290	331	-12.4%	4,357	3,318	31.3%
ESTONIA	16	38	-57.9%	703	706	-0.4%
FINLAND	170	165	3.0%	2,126	1,953	8.9%
FRANCE	3,365	2,867	17.4%	36,856	32,698	12.7%
GERMANY	4,079	3,790	7.6%	60,947	57,886	5.3%
GREECE	54	25	116.0%	278	212	31.1%
HUNGARY	643	546	17.8%	5,229	4,438	17.8%
IRELAND <sup>4</sup>	9	3	200.0%	1,491	1,438	3.7%
ITALY <sup>5</sup>	855	759	12.6%	11,896	9,496	25.3%
LATVIA	70	66	6.1%	1,383	979	41.3%
LITHUANIA <sup>4</sup>	230	130	76.9%	3,609	2,117	70.5%
LUXEMBOURG <sup>4</sup>	42	45	-6.7%	1,005	918	9.5%
NETHERLANDS	764	885	-13.7%	12,390	9,218	34.4%
POLAND	1,986	1,560	27.3%	20,236	15,361	31.7%
PORTUGAL	325	339	-4.1%	3,322	2,513	32.2%
ROMANIA	440	252	74.6%	5,672	3,633	56.1%
SLOVAKIA	242	222	9.0%	4,010	3,185	25.9%
SLOVENIA <sup>4</sup>	136	113	20.4%	1,743	1,343	29.8%
SPAIN	1,584	1,446	9.5%	19,151	13,808	38.7%
SWEDEN	514	466	10.3%	4,827	4,711	2.5%
UNITED KINGDOM	3,562	1,807	97.1%	35,783	27,095	32.1%
<b>EUROPEAN UNION<sup>1</sup></b>	<b>20,839</b>	<b>17,031</b>	<b>22.4%</b>	<b>260,135</b>	<b>217,866</b>	<b>19.4%</b>
EU15	16,289	13,517	20.5%	207,963	177,871	16.9%
EU12 <sup>1</sup>	4,550	3,514	29.5%	52,172	39,995	30.4%
ICELAND <sup>4</sup>	17	13	30.8%	120	82	46.3%
NORWAY <sup>4</sup>	217	316	-31.3%	3,894	4,106	-5.2%
SWITZERLAND <sup>3</sup>	161	163	-1.2%	3,033	3,274	-7.4%
EFTA	395	492	-19.7%	7,047	7,462	-5.6%
<b>EU+EFTA</b>	<b>21,234</b>	<b>17,523</b>	<b>21.2%</b>	<b>267,182</b>	<b>225,328</b>	<b>18.6%</b>
<b>WESTERN EUROPE (EU15+EFTA)</b>	<b>16,684</b>	<b>14,009</b>	<b>19.1%</b>	<b>215,010</b>	<b>185,333</b>	<b>16.0%</b>

SOURCE: NATIONAL AUTOMOBILE MANUFACTURERS' ASSOCIATIONS

<sup>1</sup> Data for Malta unavailable

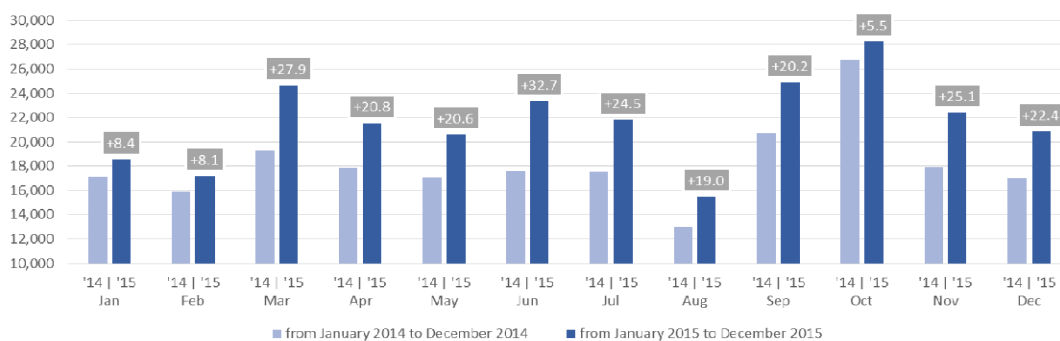
<sup>4</sup> AAA estimates

<sup>2</sup> Excluding Heavy Buses & Coaches

<sup>5</sup> ANFIA estimates based on vehicle registration certificates issued by the Italian Ministry of Transport

<sup>3</sup> Heavy Commercial Vehicles of 18t and over

### New heavy commercial vehicle registrations in the EU - 12 month trend



For further information, please contact: Ms Francesca Piazza - Statistics & Communications Advisor - E-mail: fp@acea.be - Tel. (32) 2 738 73 55

This information is available on the ACEA website: <http://www.acea.be>

# P R E S S R E L E A S E

**PRESS EMBARGO FOR ALL DATA :**

**8.00 AM (7.00 AM GMT), 26 January 2016**

## PROVISIONAL

EU<sup>1</sup>+EFTA COUNTRIES NEW REGISTRATION FIGURES BY MARKET  
NEW MEDIUM & HEAVY COMMERCIAL VEHICLES over 3.5t<sup>2</sup>

26/01/16

	December '15	December '14	% Change	Jan-Dec '15	Jan-Dec '14	% Change
AUSTRIA	353	303	16.5%	7,281	6,829	6.6%
BELGIUM	457	432	5.8%	8,327	7,801	6.7%
BULGARIA	n.a.	n.a.	n.a.	n.a.	n.a.	n.a.
CROATIA	62	47	31.9%	1,011	952	6.2%
CYPRUS	7	3	133.3%	47	26	80.8%
CZECH REPUBLIC	1,050	741	41.7%	10,732	9,054	18.5%
DENMARK	329	386	-14.8%	4,756	3,692	28.8%
ESTONIA	22	43	-48.8%	762	768	-0.8%
FINLAND	231	212	9.0%	2,707	2,560	5.7%
FRANCE	3,918	3,461	13.2%	42,783	38,784	10.3%
GERMANY	7,056	5,906	19.5%	89,744	85,971	4.4%
GREECE	57	65	-12.3%	457	383	19.3%
HUNGARY	733	587	24.9%	5,701	4,839	17.8%
IRELAND	16	4	300.0%	1,841	1,763	4.4%
ITALY <sup>3</sup>	1,135	1,031	10.1%	15,248	12,666	20.4%
LATVIA	81	70	15.7%	1,468	1,062	38.2%
LITHUANIA <sup>4</sup>	238	138	72.5%	3,715	2,251	65.0%
LUXEMBOURG	51	50	2.0%	1,076	1,013	6.2%
NETHERLANDS	848	987	-14.1%	13,767	10,347	33.1%
POLAND	2,235	1,775	25.9%	22,437	17,717	26.6%
PORTUGAL	420	408	2.9%	4,039	3,128	29.1%
ROMANIA	474	283	67.5%	5,954	3,907	52.4%
SLOVAKIA	294	254	15.7%	4,447	3,646	22.0%
SLOVENIA <sup>4</sup>	157	132	18.9%	1,907	1,492	27.8%
SPAIN	1,939	1,623	19.5%	22,435	16,214	38.4%
SWEDEN	576	543	6.1%	5,457	5,251	3.9%
UNITED KINGDOM	4,576	2,606	75.6%	47,590	38,240	24.5%
<b>EUROPEAN UNION<sup>1</sup></b>	<b>27,315</b>	<b>22,090</b>	<b>23.7%</b>	<b>325,689</b>	<b>280,356</b>	<b>16.2%</b>
EU15	21,962	18,017	21.9%	267,508	234,642	14.0%
EU12 <sup>1</sup>	5,353	4,073	31.4%	58,181	45,714	27.3%
ICELAND <sup>4</sup>	34	19	78.9%	225	134	67.9%
NORWAY	266	387	-31.3%	5,196	5,445	-4.6%
SWITZERLAND	216	216	0.0%	3,878	4,147	-6.5%
EFTA	516	622	-17.0%	9,299	9,726	-4.4%
<b>EU+EFTA</b>	<b>27,831</b>	<b>22,712</b>	<b>22.5%</b>	<b>334,988</b>	<b>290,082</b>	<b>15.5%</b>
<b>WESTERN EUROPE (EU15+EFTA)</b>	<b>22,478</b>	<b>18,639</b>	<b>20.6%</b>	<b>276,807</b>	<b>244,368</b>	<b>13.3%</b>

SOURCE: NATIONAL AUTOMOBILE MANUFACTURERS' ASSOCIATIONS

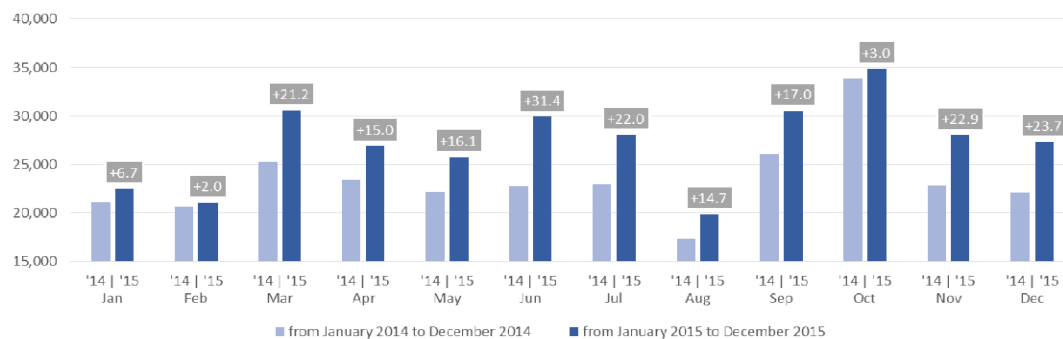
<sup>1</sup> Data for Malta unavailable

<sup>3</sup> ANFIA estimates based on vehicle registration certificates issued by the Italian Ministry of Transport

<sup>2</sup> Excluding total Buses & Coaches over 3.5t

<sup>4</sup> AAA estimates

### New medium and heavy commercial vehicle registrations in the EU - 12 month trend



For further information, please contact: Ms Francesca Piazza - Statistics & Communications Advisor - E-mail: fp@acea.be - Tel. (32) 2 738 73 55

This information is available on the ACEA website: <http://www.acea.be>

# PRESS RELEASE

**PRESS EMBARGO FOR ALL DATA :**

**8.00 AM (7.00 AM GMT), 26 January 2016**

## PROVISIONAL

EU<sup>1</sup>+EFTA COUNTRIES NEW REGISTRATION FIGURES BY MARKET  
NEW MEDIUM & HEAVY BUSES & COACHES over 3.5t

26/01/16

	December '15	December '14	% Change	Jan-Dec '15	Jan-Dec '14	% Change
AUSTRIA	98	99	-1.0%	899	900	-0.1%
BELGIUM	31	101	-69.3%	923	1,142	-19.2%
BULGARIA	n.a.	n.a.	n.a.	n.a.	n.a.	n.a.
CROATIA	6	4	50.0%	122	97	25.8%
CYPRUS	n.a.	n.a.	n.a.	n.a.	n.a.	n.a.
CZECH REPUBLIC	170	234	-27.4%	1,350	1,061	27.2%
DENMARK	80	30	166.7%	532	468	13.7%
ESTONIA	34	39	-12.8%	230	190	21.1%
FINLAND	37	30	23.3%	526	691	-23.9%
FRANCE	733	551	33.0%	7,345	5,896	24.6%
GERMANY	927	831	11.6%	6,137	5,651	8.6%
GREECE	8	6	33.3%	129	175	-26.3%
HUNGARY	91	123	-26.0%	546	467	16.9%
IRELAND	32	0	n.a.	313	206	51.9%
ITALY <sup>2</sup>	197	110	79.1%	2,419	2,135	13.3%
LATVIA	49	26	88.5%	251	208	20.7%
LITHUANIA <sup>3</sup>	7	28	-75.0%	192	288	-33.3%
LUXEMBOURG	2	8	-75.0%	251	159	57.9%
NETHERLANDS	25	273	-90.8%	344	669	-48.6%
POLAND	212	160	32.5%	1,739	1,472	18.1%
PORTUGAL	11	19	-42.1%	254	237	7.2%
ROMANIA	128	46	178.3%	2,309	1,148	101.1%
SLOVAKIA	97	95	2.1%	379	437	-13.3%
SLOVENIA <sup>3</sup>	21	4	425.0%	163	168	-3.0%
SPAIN	235	225	4.4%	2,617	1,896	38.0%
SWEDEN	168	103	63.1%	1,330	1,335	-0.4%
UNITED KINGDOM	594	448	32.6%	8,483	6,669	27.2%
<b>EUROPEAN UNION<sup>1</sup></b>	<b>3,993</b>	<b>3,593</b>	<b>11.1%</b>	<b>39,783</b>	<b>33,765</b>	<b>17.8%</b>
<b>EU15</b>	<b>3,178</b>	<b>2,834</b>	<b>12.1%</b>	<b>32,502</b>	<b>28,229</b>	<b>15.1%</b>
<b>EU12<sup>1</sup></b>	<b>815</b>	<b>759</b>	<b>7.4%</b>	<b>7,281</b>	<b>5,536</b>	<b>31.5%</b>
<b>ICELAND<sup>3</sup></b>	<b>1</b>	<b>38</b>	<b>-97.4%</b>	<b>95</b>	<b>101</b>	<b>-5.9%</b>
<b>NORWAY</b>	<b>194</b>	<b>163</b>	<b>19.0%</b>	<b>970</b>	<b>1,015</b>	<b>-4.4%</b>
<b>SWITZERLAND</b>	<b>87</b>	<b>94</b>	<b>-7.4%</b>	<b>745</b>	<b>649</b>	<b>14.8%</b>
<b>EFTA</b>	<b>282</b>	<b>295</b>	<b>-4.4%</b>	<b>1,810</b>	<b>1,765</b>	<b>2.5%</b>
<b>EU+EFTA</b>	<b>4,275</b>	<b>3,888</b>	<b>10.0%</b>	<b>41,593</b>	<b>35,530</b>	<b>17.1%</b>
<b>WESTERN EUROPE (EU15+EFTA)</b>	<b>3,460</b>	<b>3,129</b>	<b>10.6%</b>	<b>34,312</b>	<b>29,994</b>	<b>14.4%</b>

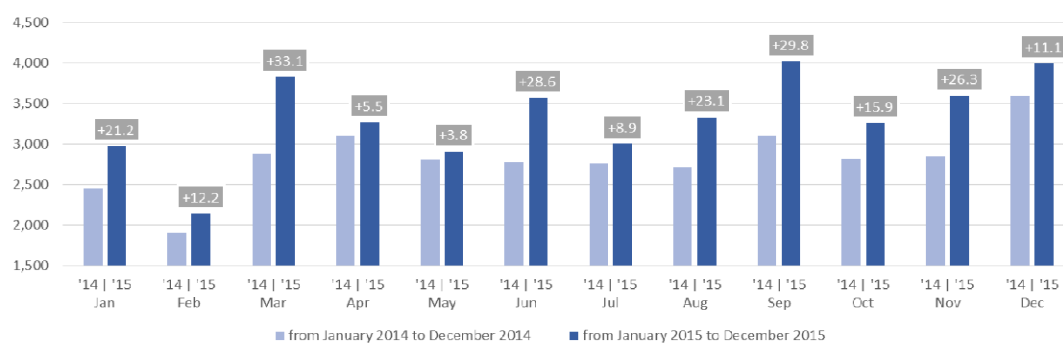
SOURCE: NATIONAL AUTOMOBILE MANUFACTURERS' ASSOCIATIONS

<sup>1</sup> Data for Malta unavailable

<sup>2</sup> ANFIA estimates based on vehicle registration certificates issued by the Italian Ministry of Transport

<sup>3</sup> AAA estimates

New medium and heavy buses & coaches registrations in the EU - 12 month trend



For further information, please contact: Ms Francesca Piazza - Statistics & Communications Advisor - E-mail: fp@acea.be - Tel. (32) 2 738 73 55

This information is available on the ACEA website: <http://www.acea.be>

**PRESS EMBARGO FOR ALL DATA :**

**8.00 AM (7.00 AM GMT), 26 January 2016**

**PROVISIONAL**  
**EU<sup>1</sup>+EFTA COUNTRIES NEW REGISTRATION FIGURES BY MARKET**  
**TOTAL NEW COMMERCIAL VEHICLES<sup>2</sup>**

26/01/16

	December '15	December '14	% Change	Jan-Dec '15	Jan-Dec '14	% Change
AUSTRIA	3,039	2,647	14.8%	41,042	38,897	5.5%
BELGIUM	4,873	4,394	10.9%	70,458	62,316	13.1%
BULGARIA <sup>3</sup>	581	385	50.9%	4,553	3,972	14.6%
CROATIA	569	322	76.7%	7,828	6,255	25.1%
CYPRUS <sup>4</sup>	131	88	48.9%	1,490	1,171	27.2%
CZECH REPUBLIC	3,142	2,503	25.5%	29,213	23,280	25.5%
DENMARK	3,726	3,450	8.0%	37,767	32,658	15.6%
ESTONIA	278	281	-1.1%	4,572	3,876	18.0%
FINLAND	1,290	1,127	14.5%	14,664	13,876	5.7%
FRANCE	44,420	40,595	9.4%	427,866	415,042	3.1%
GERMANY	30,410	27,970	8.7%	333,783	319,945	4.3%
GREECE	639	714	-10.5%	6,239	5,414	15.2%
HUNGARY	3,115	2,695	15.6%	23,762	21,243	11.9%
IRELAND	284	161	76.4%	25,876	18,701	38.4%
ITALY <sup>5</sup>	15,532	12,606	23.2%	149,853	132,418	13.2%
LATVIA	323	397	-18.6%	4,066	3,809	6.7%
LITHUANIA	464	328	41.5%	6,274	4,536	38.3%
LUXEMBOURG	345	327	5.5%	5,134	4,529	13.4%
NETHERLANDS	4,283	3,974	7.8%	71,828	62,777	14.4%
POLAND	8,794	7,105	23.8%	77,461	64,766	19.6%
PORTUGAL	4,159	4,149	0.2%	35,151	29,531	19.0%
ROMANIA	1,889	1,244	51.8%	19,329	14,958	29.2%
SLOVAKIA	1,111	914	21.6%	12,123	9,713	24.8%
SLOVENIA	958	633	51.3%	9,522	8,638	10.2%
SPAIN	16,646	13,534	23.0%	179,980	131,973	36.4%
SWEDEN	5,245	4,977	5.4%	51,585	48,519	6.3%
UNITED KINGDOM	35,580	29,583	20.3%	427,903	366,595	16.7%
<b>EUROPEAN UNION<sup>1</sup></b>	<b>191,826</b>	<b>167,103</b>	<b>14.8%</b>	<b>2,079,322</b>	<b>1,849,408</b>	<b>12.4%</b>
<b>EU15</b>	<b>170,471</b>	<b>150,208</b>	<b>13.5%</b>	<b>1,879,129</b>	<b>1,683,191</b>	<b>11.6%</b>
<b>EU12<sup>1</sup></b>	<b>21,355</b>	<b>16,895</b>	<b>26.4%</b>	<b>200,193</b>	<b>166,217</b>	<b>20.4%</b>
ICELAND	139	140	-0.7%	1,675	1,093	53.2%
NORWAY	4,925	3,193	54.2%	39,420	36,071	9.3%
SWITZERLAND	2,911	2,645	10.1%	35,641	33,618	6.0%
<b>EFTA</b>	<b>7,975</b>	<b>5,978</b>	<b>33.4%</b>	<b>76,736</b>	<b>70,782</b>	<b>8.4%</b>
<b>EU+EFTA</b>	<b>199,801</b>	<b>173,081</b>	<b>15.4%</b>	<b>2,156,058</b>	<b>1,920,190</b>	<b>12.3%</b>
<b>WESTERN EUROPE (EU15+EFTA)</b>	<b>178,446</b>	<b>156,186</b>	<b>14.3%</b>	<b>1,955,865</b>	<b>1,753,973</b>	<b>11.5%</b>

SOURCE: NATIONAL AUTOMOBILE MANUFACTURERS' ASSOCIATIONS

<sup>1</sup> Data for Malta unavailable

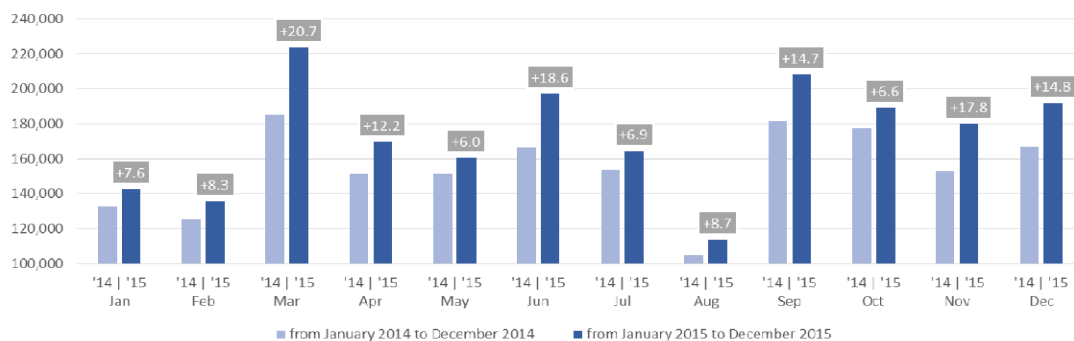
<sup>4</sup> Data for Buses & Coaches unavailable

<sup>2</sup> Total Light, Medium & Heavy Commercial Vehicles and Buses & Coaches

<sup>5</sup> ANFIA estimates based on vehicle registration certificates issued by the Italian Ministry of Transport

<sup>3</sup> Data for Medium & Heavy Commercial Vehicles and Buses & Coaches unavailable

**Total new commercial vehicle registrations in the EU - 12 month trend**



For further information, please contact: Ms Francesca Piazza - Statistics & Communications Advisor - E-mail: fp@acea.be - Tel. (32) 2 738 73 55

This information is available on the ACEA website: <http://www.acea.be>