



OTOMOTİV SANAYİİ DERNEĞİ
AUTOMOTIVE MANUFACTURERS ASSOCIATION

AYLIK RAPOR

Automotive Industry Monthly Report

Nisan / April 2015

- **Üretim**/Production
- **Satış**/Sales
- **İthalat**/Imports
- **İhracat**/Exports

OSD "OICA" Üyesidir



OSD is a Member of "OICA"



2015 Nisan Ayı Özeti / 2015 April Summary

KONULAR/ MATTERS		NİSAN / APRIL			4 AY/ 4 MONTHS			SON 12 AYLIK / YoY		
		2014	2015	2015/2014 (%)	2014	2015	2015/2014 (%)	2014	2015	2015/2014 (%)
Üretim/ Production	Toplam/ Total	98.991	120.293	22	354.481	454.998	28	1.109.561	1.169.467	5
	Otomobil/ P.Cars	63.761	67.136	5	230.220	265.569	15	670.187	768.788	15
Pazar/ Market	Toplam/ Total	56.766	95.571	68	179.263	279.785	56	834.613	908.008	9
	Otomobil/ P.Cars	42.769	70.211	64	132.116	197.202	49	625.338	652.417	4
İthalat/ Import	Toplam/ Total	37.693	60.409	60	120.698	174.746	45	573.253	576.890	1
	Otomobil/ P.Cars	31.303	50.741	62	99.308	142.987	44	482.204	473.661	-2
İhracat/ Export	Toplam/ Total	82.874	84.720	2	285.689	334.558	17	838.791	934.049	11
	Otomobil/ P.Cars	55.913	52.089	-7	192.353	210.731	10	526.023	600.371	14
İhracat / Export (\$)	Toplam/ Total **	2.113.062.381	1.872.289.773	-11	7.767.260.068	7.190.323.564	-7	22.386.538.193	22.211.938.789	-1
	Otomobil/ P.Cars	721.243.420	660.995.695	-8	2.528.712.067	2.420.087.674	-4	7.123.580.181	7.148.559.294	0

PARAMETRELER / PARAMETERS		NİSAN / APRIL			4 AY/ 4 MONTHS			SON 12 AYLIK / YoY		
		2014	2015	2015/2014 (%)	2014	2015	2015/2014 (%)	2014	2015	2015/2014 (%)
ÜFE/ PPI		0,09	1,43	**	5,61	4,06	**	12,98	4,80	**
TÜFE/ CPI		1,34	1,63	**	4,96	4,71	**	9,38	7,91	**
Sanayi Endeksi/ Industry Index		0,18	1,47	**	6,49	4,14	**	13,51	5,20	**
\$ (*)		2,1193	2,6540	25	2,1910	2,5469	16	2,0587	2,3098	12
EURO (*)		2,9305	2,9688	1	3,0074	2,8312	-6	2,7825	2,8326	2
Japon Yeni (*)		2,0720	2,2202	7	2,1392	2,1283	-1	2,0356	2,0522	1

(*) Ortalama Değerler / Average Values

(**) Toplam Sanayi / Total Industry Including Components



4 Aylık Üretim (4 Months Production)

FİRMALAR Companies	OTOMOBİL Pass.Car	%	K.KAMYON L.Truck	%	B.KAMYON Mid.Truck	%	KAMYONET Pick Up	%	OTOBÜS Bus	%	MİNİBÜS Mini-Bus	%	MİDİBÜS Midi-Bus	%	TRAKTÖR F.Tractor	%	TOPLAM Totals
A.I.O.S.	0	0	1.087	92	0	0	1.259	1	94	3	0	0	598	28	0	0	3.038
FORD OTOSAN	6.344	2	0	0	3.655	34	79.454	53	0	0	23.565	98	0	0	0	0	113.018
HATTAT TARIM	0	0	0	0	0	0	0	0	0	0	0	0	0	0	883	5	883
HONDA TÜRKİYE	4.302	2	0	0	0	0	0	0	0	0	0	0	0	0	0	0	4.302
HYUNDAI ASSAN	73.059	28	0	0	0	0	0	0	0	0	0	0	0	0	0	0	73.059
KARSAN	0	0	0	0	10	0	83	0	4	0	566	2	168	8	0	0	831
M. BENZ TÜRK	0	0	0	0	7.104	66	0	0	1.356	50	0	0	0	0	0	0	8.460
MANTÜRKİYE	0	0	0	0	0	0	0	0	681	25	0	0	0	0	0	0	681
OTOKAR	0	0	92	8	0	0	33	0	122	5	0	0	851	40	0	0	1.098
OYAK RENAULT	118.724	45	0	0	0	0	0	0	0	0	0	0	0	0	0	0	118.724
TEMSA GLOBAL	0	0	0	0	0	0	0	0	439	16	0	0	507	24	0	0	946
TOFAŞ	23.589	9	0	0	0	0	67.701	46	0	0	0	0	0	0	0	0	91.290
TOYOTA	39.551	15	0	0	0	0	0	0	0	0	0	0	0	0	0	0	39.551
TÜRK TRAKTÖR	0	0	0	0	0	0	0	0	0	0	0	0	0	0	15.848	95	15.848
TOPLAM / TOTAL	265.569	100	1.179	100	10.769	100	148.530	100	2.696	100	24.131	100	2.124	100	16.731	100	471.729

Nisan Ayı Üretimi (April Production)

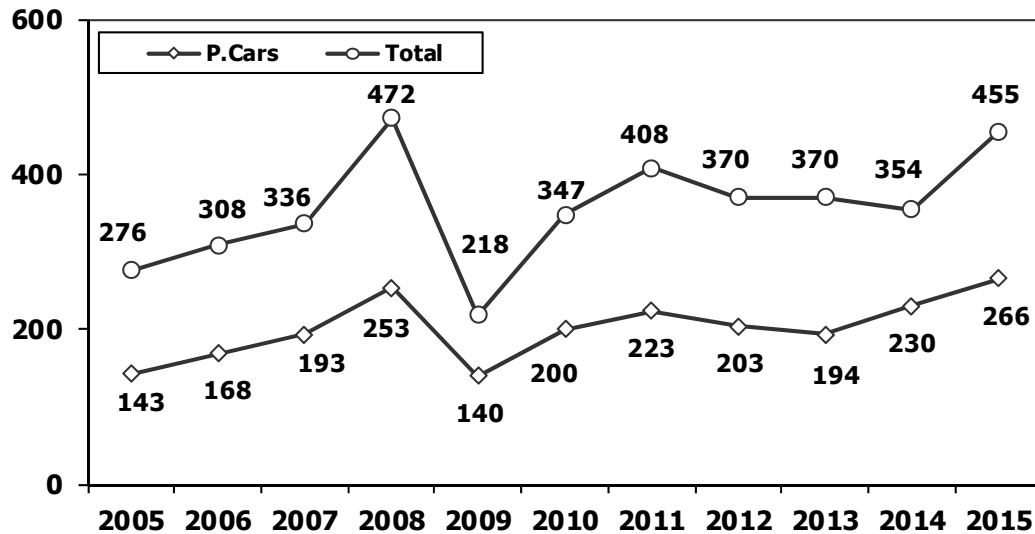
FİRMALAR Companies	OTOMOBİL Pass.Car	%	K.KAMYON L.Truck	%	B.KAMYON Mid.Truck	%	KAMYONET Pick Up	%	OTOBÜS Bus	%	MİNİBÜS Mini-Bus	%	MİDİBÜS Midi-Bus	%	TRAKTÖR F.Tractor	%	TOPLAM Totals
A.I.O.S.	0	0	352	88	0	0	371	1	34	5	0	0	150	28	0	0	907
FORD OTOSAN	2.084	3	0	0	1.102	35	20.218	50	0	0	7.647	98	0	0	0	0	31.051
HATTAT	0	0	0	0	0	0	0	0	0	0	0	0	0	0	301	7	301
HONDA TÜRKİYE	1.257	2	0	0	0	0	0	0	0	0	0	0	0	0	0	0	1.257
HYUNDAI ASSAN	19.709	29	0	0	0	0	0	0	0	0	0	0	0	0	0	0	19.709
KARSAN	0	0	0	0	2	0	79	0	0	0	171	2	63	12	0	0	315
M. BENZ TÜRK	0	0	0	0	2.018	65	0	0	373	53	0	0	0	0	0	0	2.391
MANTÜRKİYE	0	0	0	0	0	0	0	0	174	25	0	0	0	0	0	0	174
OTOKAR	0	0	50	12	0	0	6	0	45	6	0	0	185	35	0	0	286
OYAK RENAULT	27.777	41	0	0	0	0	0	0	0	0	0	0	0	0	0	0	27.777
TEMSA	0	0	0	0	0	0	0	0	80	11	0	0	132	25	0	0	212
TOFAŞ	6.324	9	0	0	0	0	19.905	49	0	0	0	0	0	0	0	0	26.229
TOYOTA	9.985	15	0	0	0	0	0	0	0	0	0	0	0	0	0	0	9.985
TÜRK TRAKTÖR	0	0	0	0	0	0	0	0	0	0	0	0	0	0	3.818	93	3.818
TOPLAM / TOTAL	67.136	100	402	100	3.122	100	40.579	100	706	100	7.818	100	530	100	4.119	100	124.412

2014/2015 Yılları Üretim 2014/2015 Production

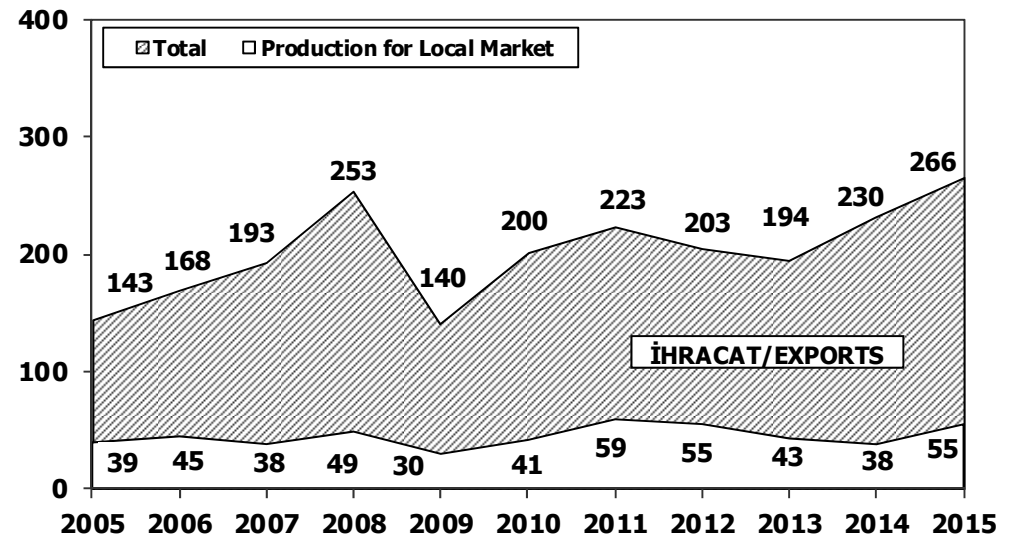
K.KAMYON : AYA 3.5-12 Ton (L.Truck:GVW 3.5-12 Ton)
B.KAMYON : AYA 12 Ton'dan Büyük (M.Truck:GVW 12 Ton And Up)

TİPLER	NİSANAYI ÜRETİMİ April Production		4 AYLIK ÜRETİM 4 Months Production		DEĞİŞİM % Percent Change %	
	2014	2015	2014	2015	NİSAN April	4 AY 4 Months
OTOMOBİL - Pass.Car	63.761	67.136	230.220	265.569	5	15
TİCARİ ARAÇLAR - Commercial Vehicles	35.230	53.157	124.261	189.429	51	52
* B. KAMYON - M. Truck	2.188	3.122	7.847	10.769	43	37
* K. KAMYON - L. Truck	258	402	1.114	1.179	56	6
* KAMYONET - Pick Up	28.684	40.579	101.753	148.530	41	46
* OTOBÜS - Bus	542	706	2.269	2.696	30	19
* MİNİBÜS - Minibus	3.015	7.818	9.068	24.131	159	166
* MİDİBÜS - Midibus	543	530	2.210	2.124	-2	-4
TAŞIT ARAÇLARI TOPLAM - MV Total	98.991	120.293	354.481	454.998	22	28
TRAKTÖR - F.Tractor	4.548	4.119	16.100	16.731	-9	4
GENEL TOPLAM - Grand Total	103.539	124.412	370.581	471.729	20	27

Toplam Üretim ve Otomobil Üretimi (x1000) (Ocak-Nisan)
Total & P.Cars Production (x1000) (January- April)

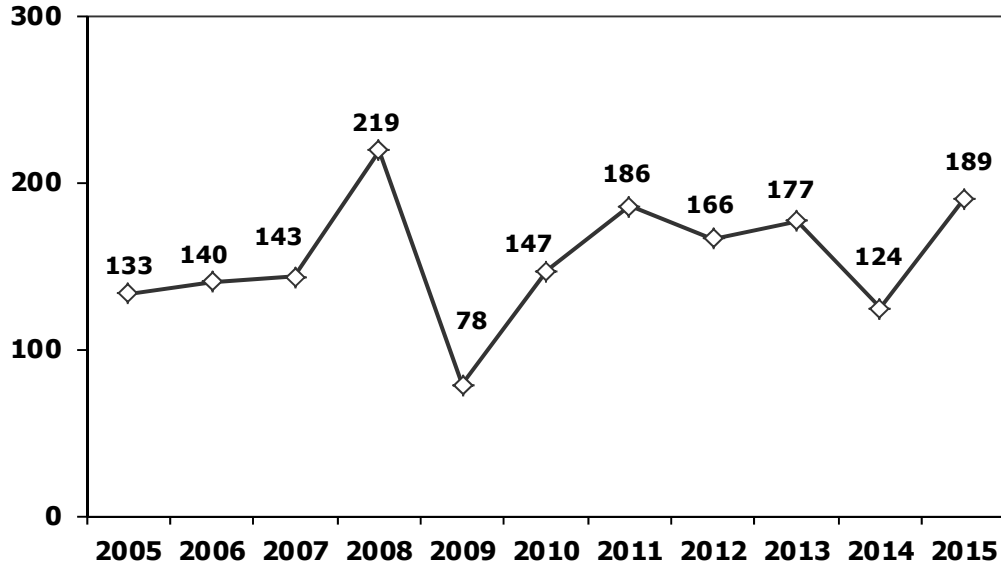


Otomobil Üretimi ve İhracat (x1000) (Ocak-Nisan)
P.Cars Production & Exports (x1000) (January- April)

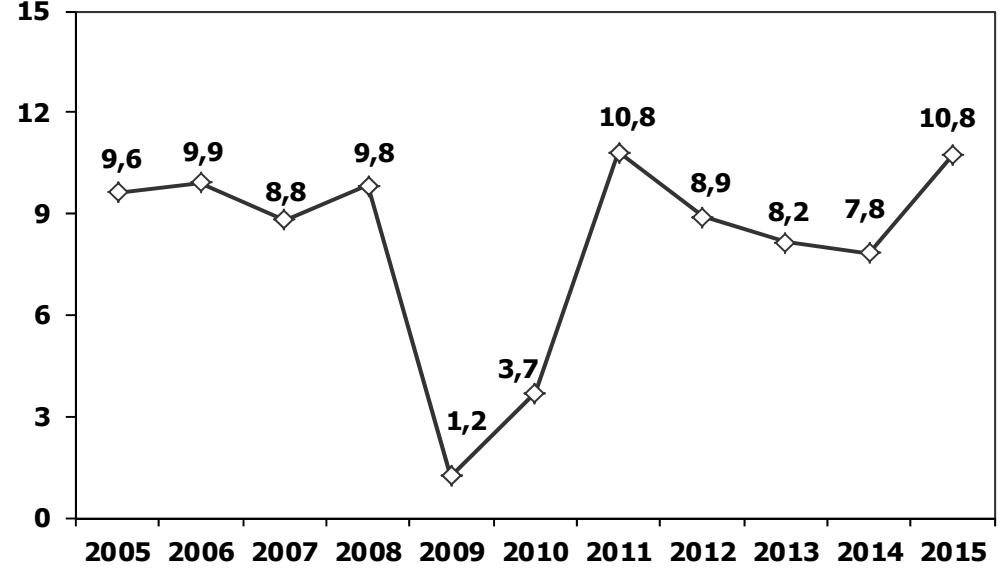




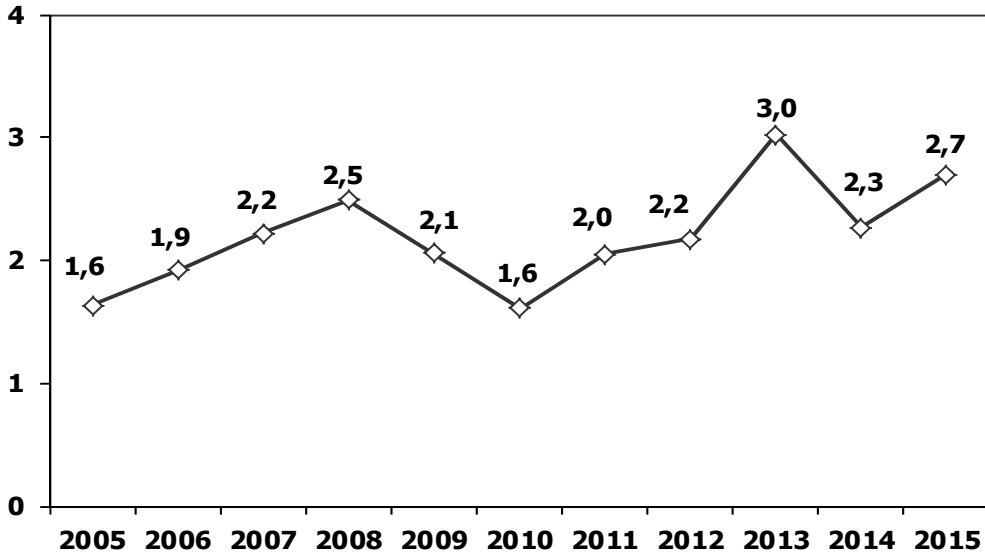
Ticari Araç Üretimi (x1000) (Ocak-Nisan)
Commercial Vehicle Production (x1000) (January- April)



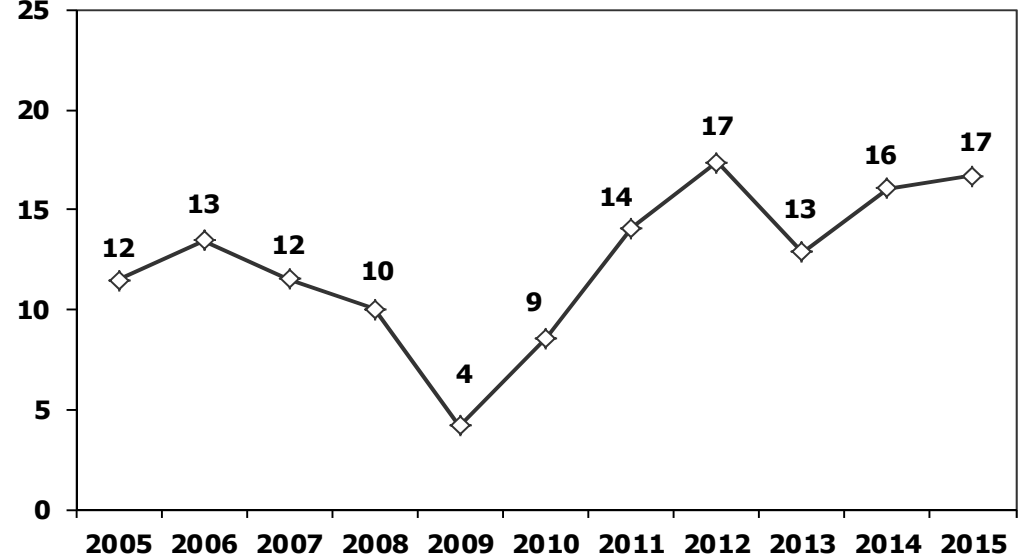
(AYA >12 Ton) **Büyük Kamyon Üretimi** (x1000) (Ocak-Nisan)
(GVW >12 Ton) Heavy Truck Production (x1000) (January- April)



Otobüs Üretimi (x1000) (Ocak-Nisan)
Bus Production (x1000) (January- April)

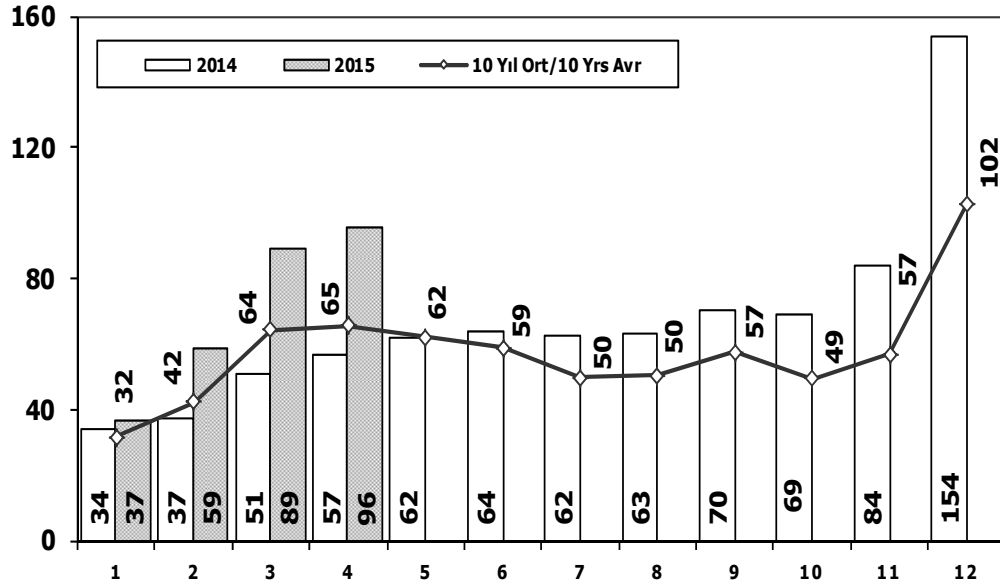


Traktör Üretimi (x1000) (Ocak-Nisan)
F. Tractor Production (x1000) (January- April)



Toplam Pazarın Analizi (x1000)

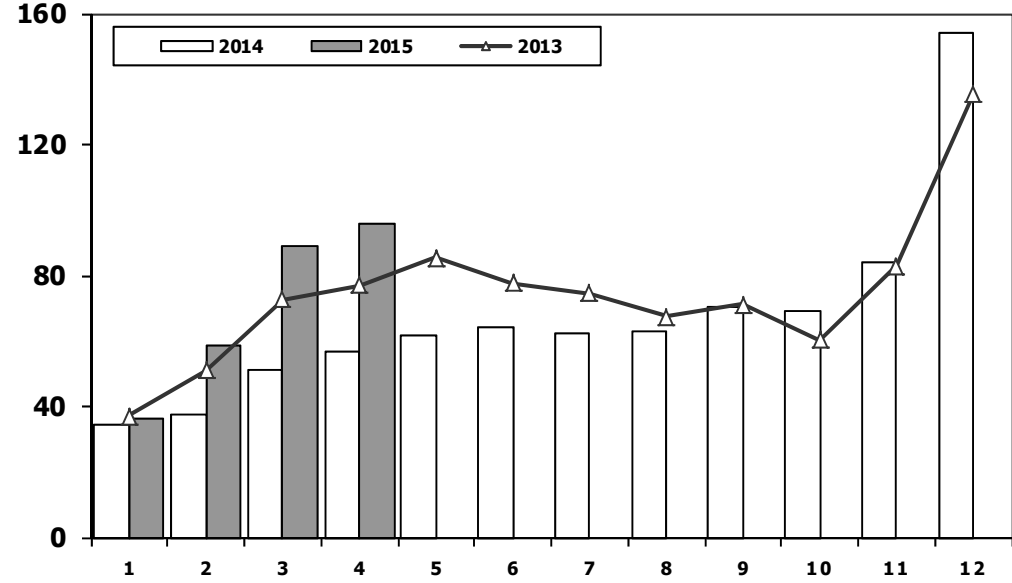
Total Market Analysis (x1000)



Aylar / Months	10 Yil Ort. 10 Yrs Avr. (x1000)	2015 (x1000)	%
1	31,7	36,6	15,3
2	42,3	58,5	38,5
3	64,3	89,1	38,6
4	65,4	95,6	46,0
Total	203,7	279,8	37,4

Toplam Pazar (x1000)

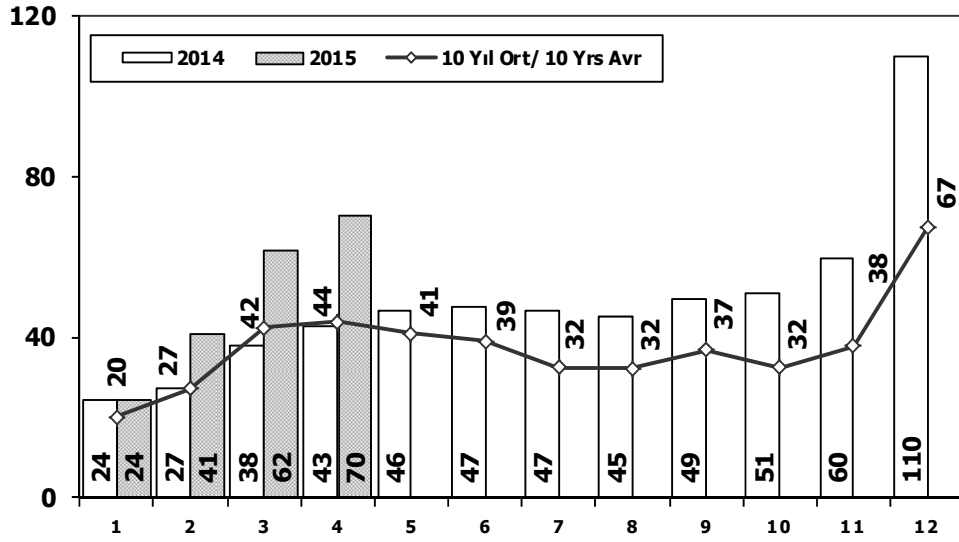
Total Market (x1000)



	1	2	3	4	5	6	7	8	9	10	11	12	4 Ay/Mo	Total
2005	22.687	38.291	64.502	60.873	71.383	64.379	63.847	68.647	66.580	60.791	65.719	110.838	186.353	758.537
2006	29.969	44.646	65.090	68.853	83.289	58.203	40.037	47.374	49.629	39.805	55.898	82.722	208.558	665.515
2007	24.950	31.702	45.488	45.633	51.255	51.661	50.117	54.171	50.078	56.058	67.017	106.076	147.773	634.206
2008	33.792	38.121	56.814	50.967	51.627	49.393	44.692	46.592	46.829	35.147	28.152	44.418	179.694	526.544
2009	20.631	22.846	56.531	54.426	64.887	63.102	30.246	37.092	83.403	22.117	29.202	91.386	154.434	575.869
2010	21.050	32.313	53.828	57.079	61.628	63.390	63.718	64.645	66.601	76.780	77.406	154.734	164.270	793.172
2011	47.658	62.348	83.333	82.071	85.093	85.863	65.364	61.378	63.643	72.640	67.195	134.281	275.410	910.867
2012	31.219	43.827	68.957	66.014	74.820	74.781	65.122	60.848	73.197	62.677	75.045	121.113	210.017	817.620
2013	37.140	50.931	72.688	77.015	85.421	77.771	74.726	67.383	71.037	60.399	83.017	135.596	237.774	893.124
2014	34.225	37.308	50.964	56.766	61.909	63.952	62.206	62.839	70.180	69.259	83.937	153.941	179.263	807.486
2015	36.578	58.532	89.104	95.571	0	0	0	0	0	0	0	0	279.785	279.785

Otomobil Pazarının Analizi (x1000)

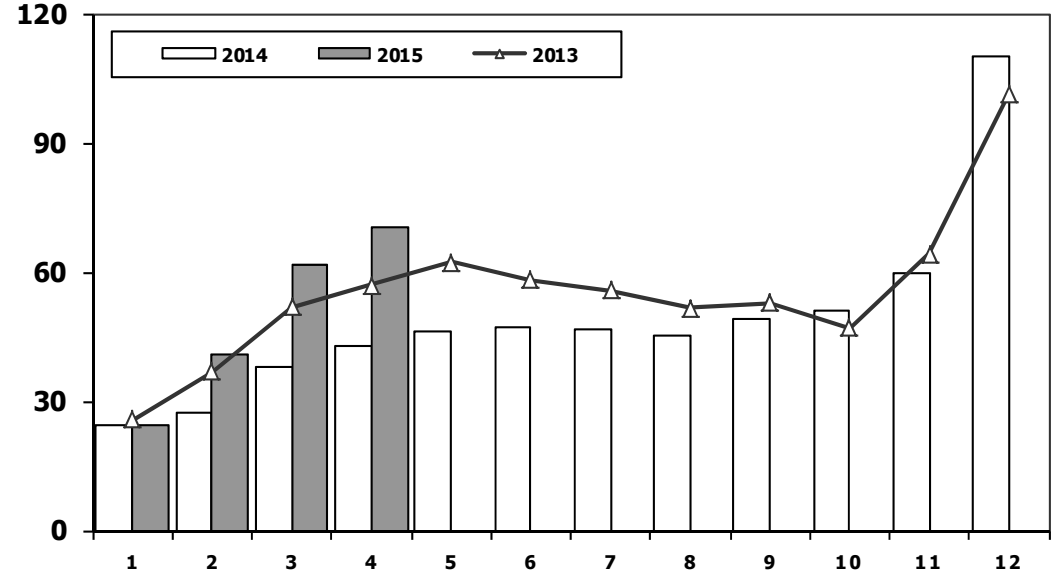
P.Cars Market Analysis (x1000)



Aylar / Months	10 Yil Ort. 10 Yrs Avr. (x1000)	2015 (x1000)	%
1	20,0	24,5	22,7
2	27,1	40,8	50,4
3	42,3	61,7	45,9
4	43,8	70,2	60,3
Total	133,2	197,2	48,1

Otomobil Pazarı (x1000)

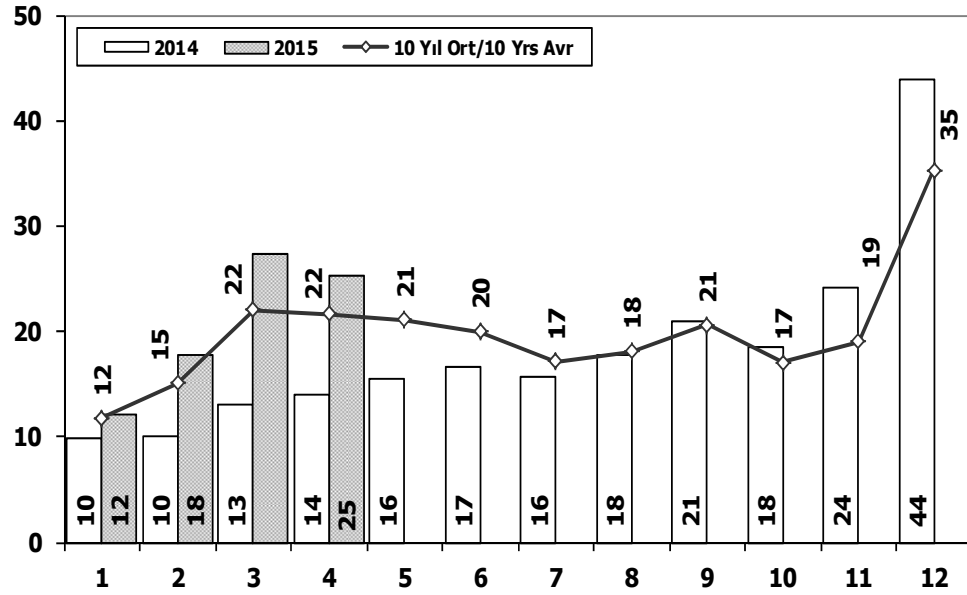
P.Cars Market (x1000)



	1	2	3	4	5	6	7	8	9	10	11	12	4 Ay/Mo	Total
2005	11.595	21.012	38.129	36.206	38.480	40.900	38.969	38.648	36.410	34.960	37.841	65.447	106.942	438.597
2006	16.506	24.929	36.996	40.177	48.521	32.982	22.653	24.873	27.517	21.237	30.477	46.351	118.608	373.219
2007	13.186	17.212	24.336	25.204	29.067	30.126	28.246	28.469	27.662	32.569	39.643	61.745	79.938	357.465
2008	18.588	21.196	34.147	30.313	31.477	28.724	25.530	26.102	27.053	19.788	17.201	25.879	104.244	305.998
2009	13.173	14.492	40.622	36.202	44.188	41.019	16.637	22.537	52.162	13.828	17.781	57.178	104.489	369.819
2010	12.594	20.651	33.958	36.549	40.467	42.086	41.399	42.222	42.477	47.859	50.061	99.461	103.752	509.784
2011	29.868	39.004	54.023	53.835	56.302	56.714	43.518	38.875	39.964	47.508	44.951	88.957	176.730	593.519
2012	21.077	29.189	47.270	45.645	50.460	50.849	44.531	41.236	49.360	43.440	52.297	80.926	143.181	556.280
2013	25.835	36.814	51.785	56.999	62.383	58.290	55.712	51.611	52.925	46.985	64.117	101.199	171.433	664.655
2014	24.368	27.167	37.812	42.769	46.379	47.278	46.602	45.131	49.262	50.814	59.695	110.054	132.116	587.331
2015	24.498	40.817	61.676	70.211	0	0	0	0	0	0	0	0	197.202	197.202

Ticari Araç Pazarının Analizi (x1000)

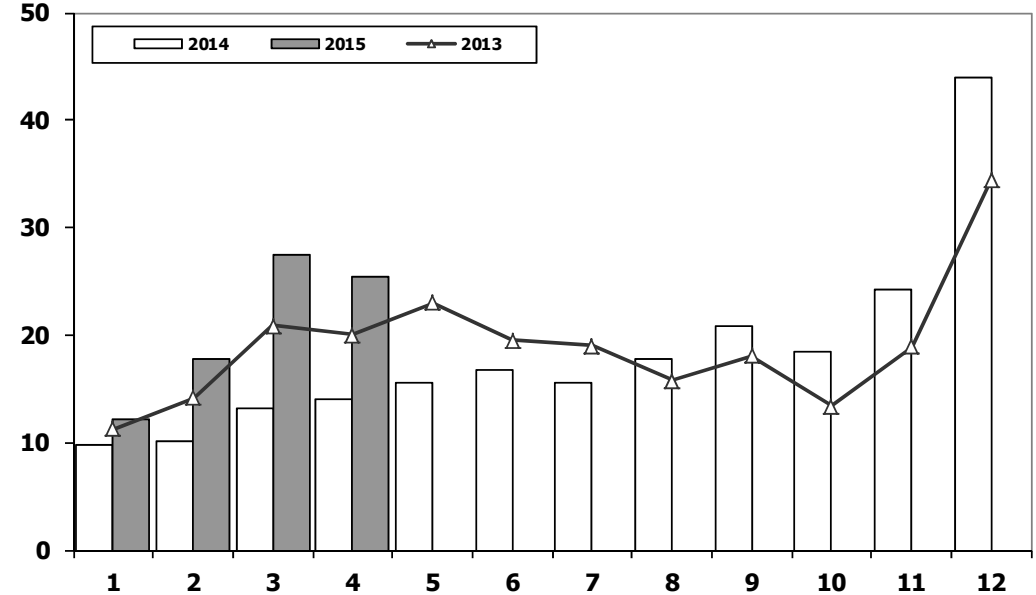
CV Market Analysis (x1000)



Aylar / Months	10 Yil Ort. 10 Yrs Avr. (x1000)	2015 (x1000)	%
1	11,8	12,1	2,8
2	15,1	17,7	17,2
3	22,0	27,4	24,6
4	21,6	25,4	17,1
Total	70,5	82,6	17,1

Ticari Araç Pazarı (x1000)

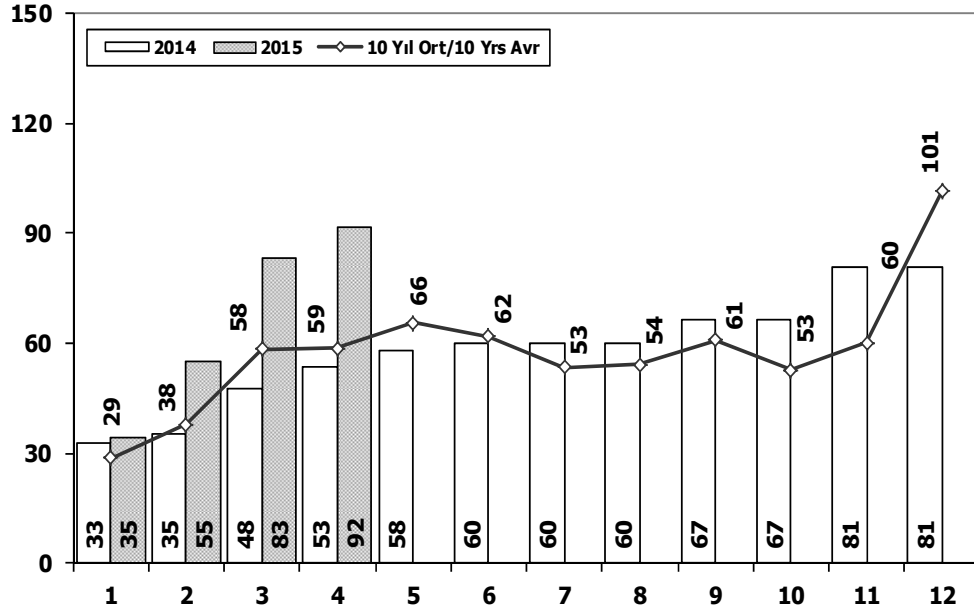
CV Total Market (Local + Imports) (x1000)



	1	2	3	4	5	6	7	8	9	10	11	12	4 Ay/Mo	Total
2005	11.092	17.279	26.373	24.667	32.903	23.479	24.878	29.999	30.170	25.831	27.878	45.391	79.411	319.940
2006	13.463	19.717	28.094	28.676	34.768	25.221	17.384	22.501	22.112	18.568	25.421	36.371	89.950	292.296
2007	11.764	14.490	21.152	20.429	22.188	21.535	21.871	25.702	22.416	23.489	27.374	44.331	67.835	276.741
2008	15.204	16.925	22.667	20.654	20.150	20.669	19.162	20.490	19.776	15.359	10.951	18.539	75.450	220.546
2009	7.458	8.354	15.909	18.224	20.699	22.083	13.609	14.555	31.241	8.289	11.421	34.208	49.945	206.050
2010	8.456	11.662	19.870	20.530	21.161	21.304	22.319	22.423	24.124	28.921	27.345	55.273	60.518	283.388
2011	17.790	23.344	29.310	28.236	28.791	29.149	21.846	22.503	23.679	25.132	22.244	45.324	98.680	317.348
2012	10.142	14.638	21.687	20.369	24.360	23.932	20.591	19.612	23.837	19.237	22.748	40.187	66.836	261.340
2013	11.305	14.117	20.903	20.016	23.038	19.481	19.014	15.772	18.112	13.414	18.900	34.397	66.341	228.469
2014	9.857	10.141	13.152	13.997	15.530	16.674	15.604	17.708	20.918	18.445	24.242	43.887	47.147	220.155
2015	12.080	17.715	27.428	25.360	0	0	0	0	0	0	0	0	82.583	82.583

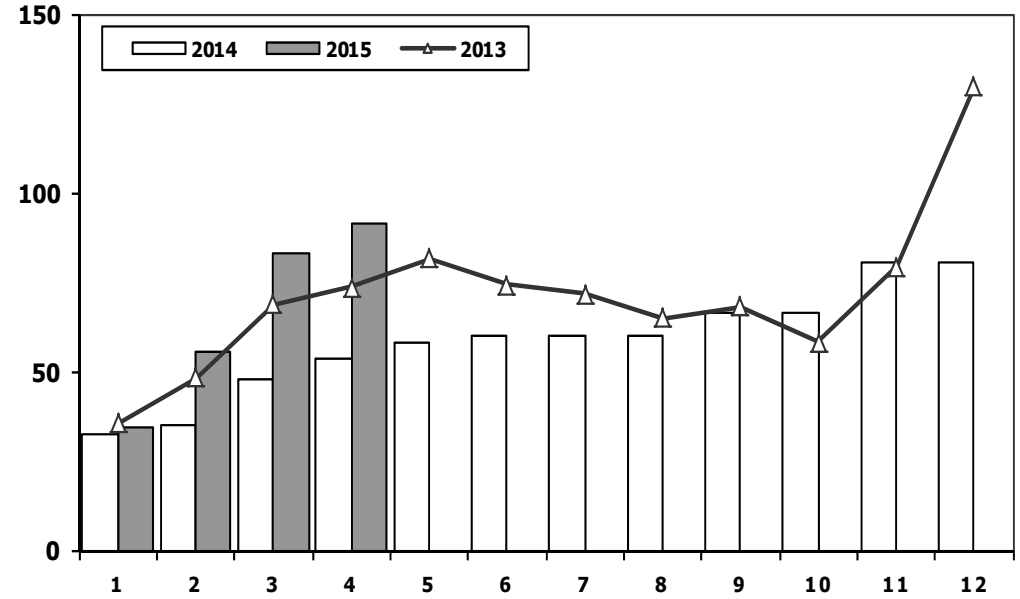
Hafif Araç Pazarının Analizi (x1000)

LV Market Analysis (x1000)



Hafif Araç Pazarı (x1000)

LV Total Market (Local + Imports) (x1000)

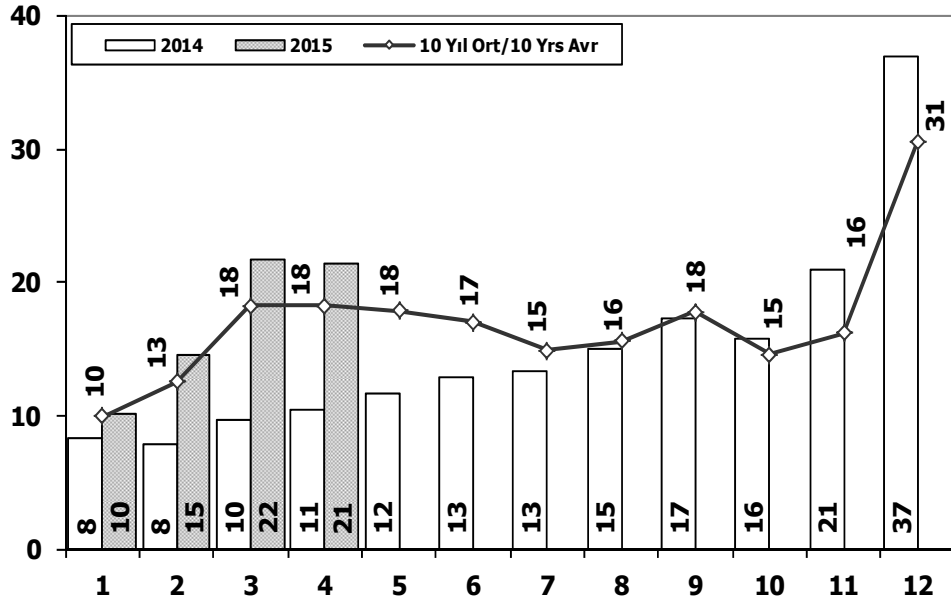


Aylar / Months	10 Yıl Ort. 10 Yrs Avr. (x1000)	2015 (x1000)	%
1	28,6	34,6	21,2
2	37,7	55,3	46,6
3	58,3	83,3	42,9
4	58,6	91,6	56,3
Total	183,2	264,9	44,6

	1	2	3	4	5	6	7	8	9	10	11	12	4 Ay/Mo	Total
2005	20.747	35.766	60.707	56.844	67.357	60.796	61.015	64.011	61.954	56.638	61.364	103.209	174.064	710.408
2006	27.917	40.938	60.052	64.038	78.229	54.355	37.251	43.767	46.109	36.542	51.867	76.787	192.945	617.852
2007	23.117	29.184	41.890	42.366	47.938	48.674	47.490	50.558	46.581	52.725	63.313	100.926	136.557	594.762
2008	31.527	35.251	53.649	47.701	48.598	46.324	42.156	43.670	43.932	32.884	26.253	42.078	168.128	494.023
2009	19.606	21.742	55.111	52.640	63.191	61.067	28.845	35.609	81.397	21.033	27.962	88.923	149.099	557.126
2010	20.095	31.172	51.769	54.946	59.377	60.896	61.345	61.764	63.814	73.404	73.962	148.369	157.982	760.913
2011	44.892	58.663	78.403	77.695	80.646	81.573	63.044	58.406	60.129	69.421	63.657	127.910	259.653	864.439
2012	29.545	41.324	64.884	62.949	70.863	71.067	62.304	58.148	69.629	59.938	71.710	115.400	198.702	777.761
2013	35.523	48.307	68.774	73.575	81.468	74.096	71.596	65.043	67.963	58.014	79.301	129.718	226.179	853.378
2014	32.670	35.021	47.581	53.305	58.121	60.163	59.907	60.199	66.531	66.573	80.621	80.621	168.577	701.313
2015	34.615	55.331	83.302	91.602	0	0	0	0	0	0	0	0	264.850	264.850

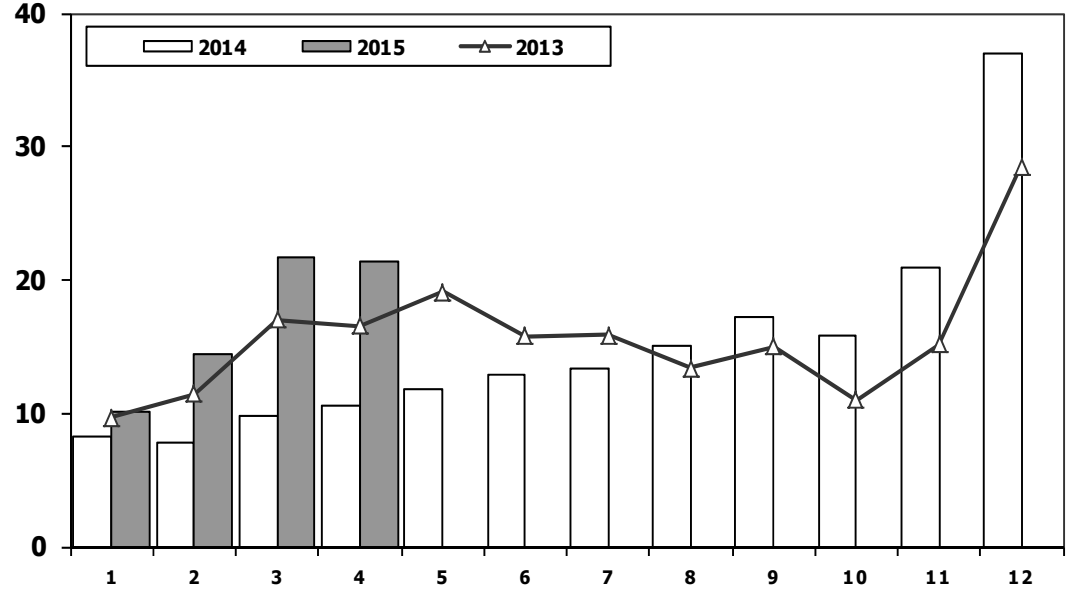


Hafif Ticari Araç Pazarının Analizi (x1000) LCV Market Analysis (x1000)



Aylar / Months	10 Yil Ort. 10 Yrs Avr. (x1000)	2015 (x1000)	%
1	10,0	10,1	1,4
2	12,5	14,5	15,7
3	18,3	21,6	18,3
4	18,3	21,4	16,9
Total	59,1	67,6	14,5

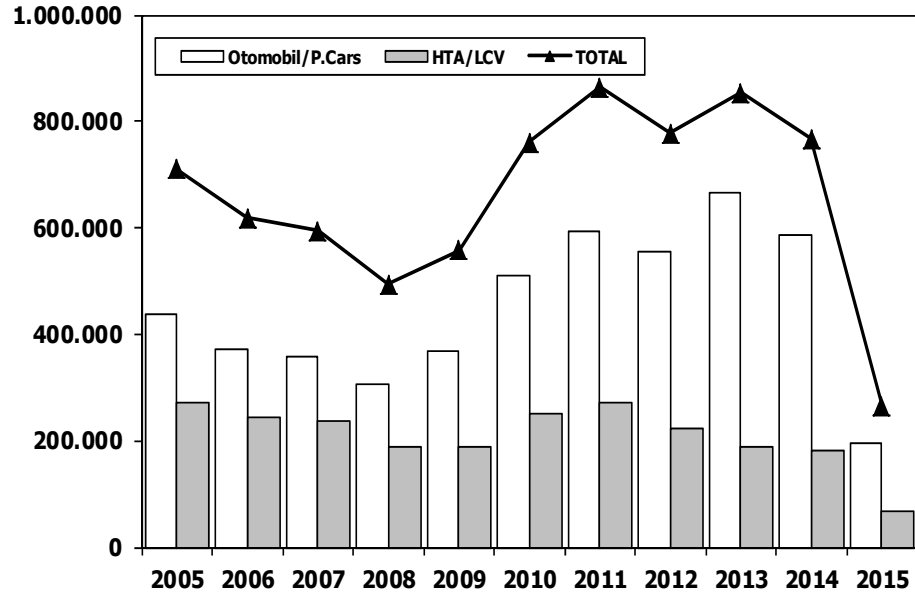
Hafif Ticari Araç Pazarı (x1000) LCV Total Market (Local + Imports) (x1000)



	1	2	3	4	5	6	7	8	9	10	11	12	4 Ay/Mo	Total
2005	9.152	14.754	22.578	20.638	28.877	19.896	22.046	25.363	25.544	21.678	23.523	37.762	67.122	271.811
2006	11.411	16.009	23.056	23.861	29.708	21.373	14.598	18.894	18.592	15.305	21.390	30.436	74.337	244.633
2007	9.931	11.972	17.554	17.162	18.871	18.548	19.244	22.089	18.919	20.156	23.670	39.181	56.619	237.297
2008	12.939	14.055	19.502	17.388	17.121	17.600	16.626	17.568	16.879	13.096	9.052	16.199	63.884	188.025
2009	6.433	7.250	14.489	16.438	19.003	20.048	12.208	13.072	29.235	7.205	10.181	31.745	44.610	187.307
2010	7.501	10.521	17.811	18.397	18.910	18.810	19.946	19.542	21.337	25.545	23.901	48.908	54.230	251.129
2011	15.024	19.659	24.380	23.860	24.344	24.859	19.526	19.531	20.165	21.913	18.706	38.953	82.923	270.920
2012	8.468	12.135	17.614	17.304	20.403	20.218	17.773	16.912	20.269	16.498	19.413	34.474	55.521	221.481
2013	9.688	11.493	16.989	16.576	19.085	15.806	15.884	13.432	15.038	11.029	15.184	28.519	54.746	188.723
2014	8.302	7.854	9.769	10.536	11.742	12.885	13.305	15.068	17.269	15.759	20.926	36.935	36.461	180.350
2015	10.117	14.514	21.626	21.391	0	0	0	0	0	0	0	0	67.648	67.648

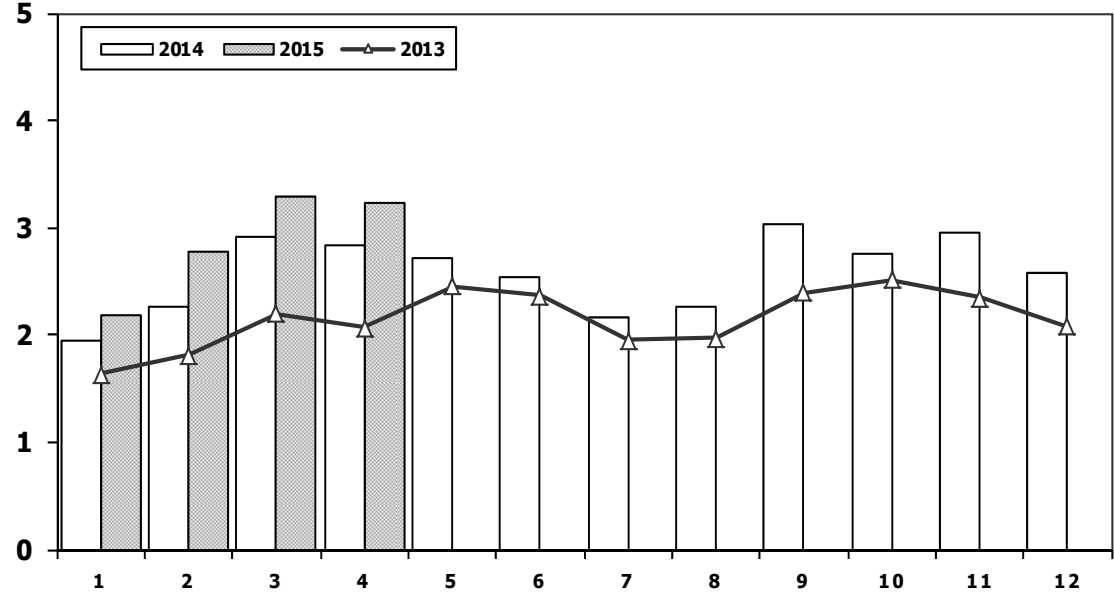


Hafif Arac Pazarı (AYA < 3.5 Ton)
Light Vehicle Market (GVW < 3.5 Ton)



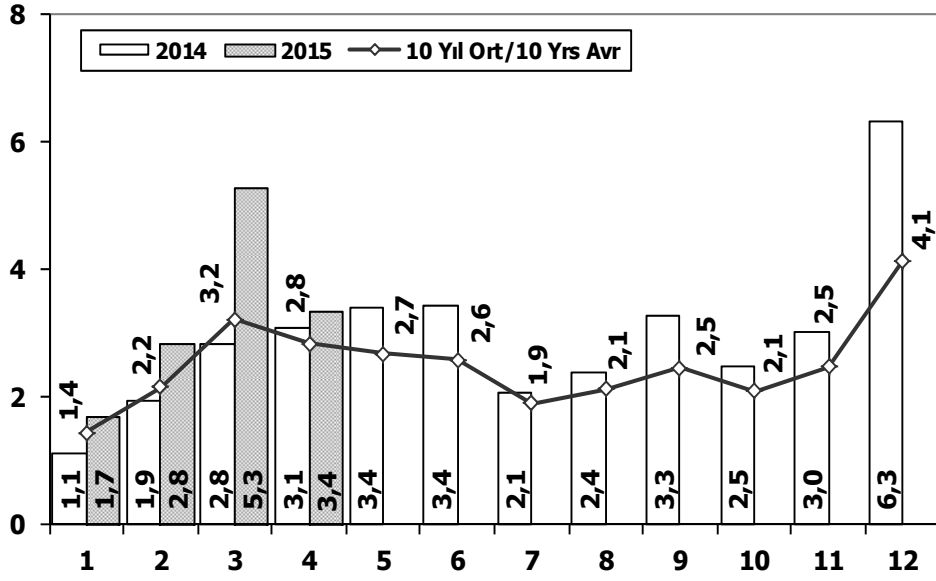
	2005	2006	2007	2008	2009	2010	2011	2012	2013	2014	2015
Otomobil/P.Cars	438.597	373.219	357.465	305.998	369.819	509.784	593.519	556.280	664.655	587.331	197.202
HTA/LCV	271.811	244.633	237.297	188.025	187.307	251.129	270.920	221.481	188.723	180.350	67.648
TOTAL	710.408	617.852	594.762	494.023	557.126	760.913	864.439	777.761	853.378	767.681	264.850
HTA/LCV (%)	38	40	40	38	34	33	31	28	22	23	26

Traktör Pazarı (x1000)
F.Tractor Market (x1000)



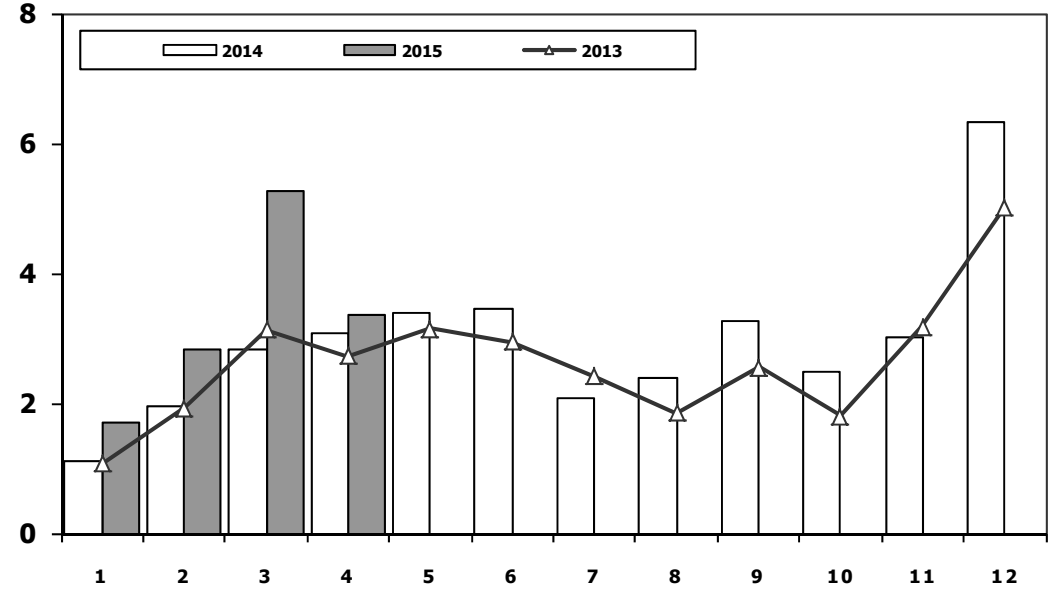
	1	2	3	4	5	6	7	8	9	10	11	12	4 Ay/Mo	Total
2005	1.026	1.636	2.001	2.599	2.569	2.780	2.148	2.819	2.567	2.477	2.297	2.089	7.262	27.008
2006	1.578	2.493	2.746	2.841	3.561	2.356	1.685	2.177	2.756	1.915	2.353	1.925	9.658	28.386
2007	1.812	1.778	2.063	2.107	2.266	1.853	1.653	2.065	2.372	2.239	2.231	1.602	7.760	24.041
2008	1.510	1.427	1.933	1.692	1.689	1.592	1.275	924	904	609	707	359	6.562	14.621
2009	267	344	388	638	759	828	741	534	586	765	725	715	1.637	7.290
2010	714	903	1.432	1.653	1.736	1.673	1.613	1.527	2.351	2.787	2.656	2.345	4.702	21.390
2011	2.458	2.610	3.105	3.403	3.847	3.599	2.952	1.559	2.957	2.823	2.603	2.807	11.576	34.723
2012	2.216	2.632	3.223	3.259	3.067	2.821	2.037	1.262	1.648	1.858	1.921	1.579	11.330	27.523
2013	1.633	1.817	2.196	2.070	2.455	2.370	1.955	1.969	2.396	2.510	2.343	2.080	7.716	25.794
2014	1.941	2.256	2.915	2.837	2.723	2.534	2.171	2.265	3.039	2.755	2.964	2.573	9.949	30.973
2015	2.187	2.767	3.297	3.235	0	0	0	0	0	0	0	0	11.486	11.486

Kamyon Pazarının Analizi (x1000) AYA > 5 Ton Truck Market Analysis (x1000) GVW > 5 Ton



Aylar / Months	10 Yil Ort. 10 Yrs Avr. (x1000)	2015 (x100)	%
1	1,4	1,7	17,8
2	2,2	2,8	31,7
3	3,2	5,3	63,7
4	2,8	3,4	17,7
Total	9,7	13,2	36,2

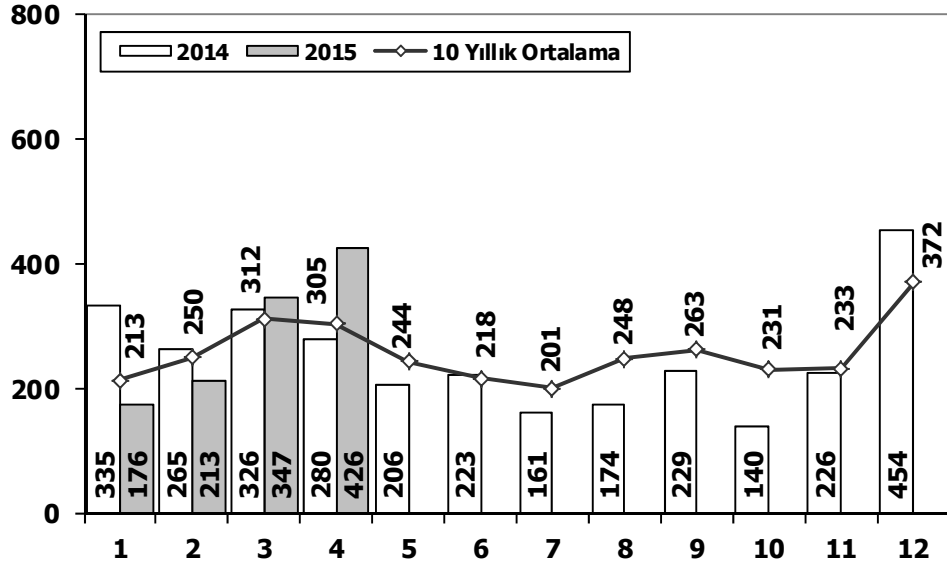
Kamyon Pazarı (x1000) AYA > 5 Ton Truck Market (x1000) GVW > 5 Ton



	1	2	3	4	5	6	7	8	9	10	11	12	4 Ay/Mo	Total
2005	1.693	2.186	3.288	3.484	3.413	3.147	2.504	4.028	4.043	3.708	3.918	6.570	10.651	41.982
2006	1.767	3.310	4.467	4.180	4.449	3.398	2.472	3.142	3.052	2.926	3.550	5.358	13.724	42.071
2007	1.554	2.055	3.065	2.940	2.865	2.613	2.372	3.145	2.988	2.886	3.258	4.444	9.614	34.185
2008	1.797	2.309	2.621	2.578	2.459	2.526	2.067	2.377	2.390	1.790	1.512	1.834	9.305	26.260
2009	771	759	1.034	1.342	1.355	1.651	1.156	1.205	1.780	866	981	2.015	3.906	14.915
2010	777	968	1.772	1.807	1.966	2.205	2.093	2.446	2.444	3.071	3.136	5.677	5.324	28.362
2011	2.552	3.292	4.418	3.754	3.803	3.749	1.996	2.478	3.081	2.774	3.108	5.787	14.016	40.792
2012	1.375	2.159	3.595	2.697	3.321	3.250	2.450	2.277	2.991	2.244	3.006	5.000	9.826	34.365
2013	1.077	1.931	3.127	2.720	3.145	2.951	2.411	1.845	2.554	1.801	3.173	5.025	8.855	31.760
2014	1.117	1.949	2.818	3.092	3.405	3.438	2.083	2.390	3.281	2.494	3.028	6.313	8.976	35.408
2015	1.708	2.840	5.270	3.351	0	0	0	0	0	0	0	0	13.169	13.169

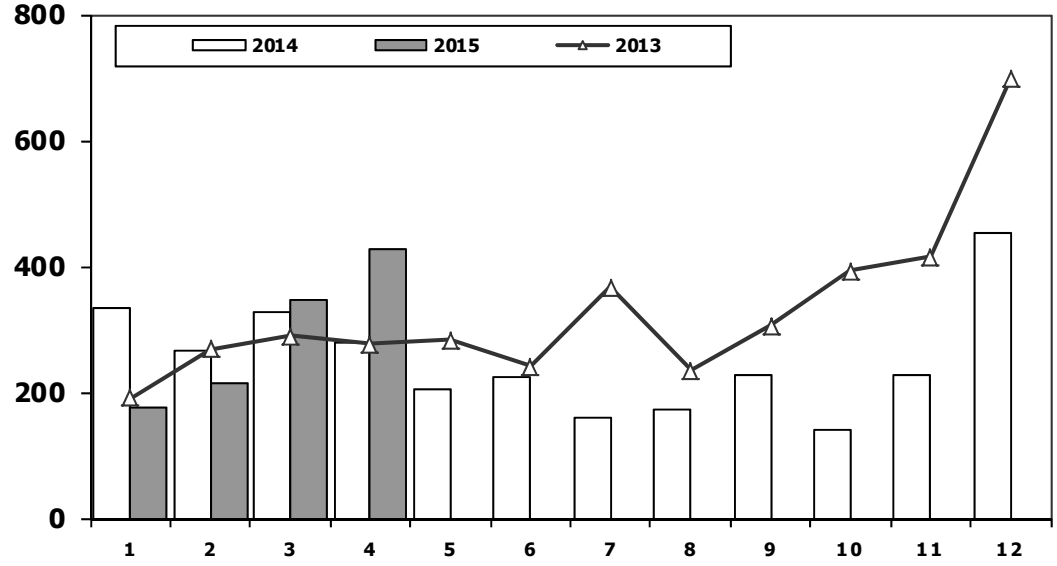
Midibüs Pazarının Analizi (7-9 mt / 25-35 Kişilik)

Midibus Market Analysis (7-9 mt / 25-35 Passengers)



Midibüs Pazarı (7-9 mt / 25-35 Kişilik Midibüs)

Midibus Market (7-9 mt / 25-35 Passengers)

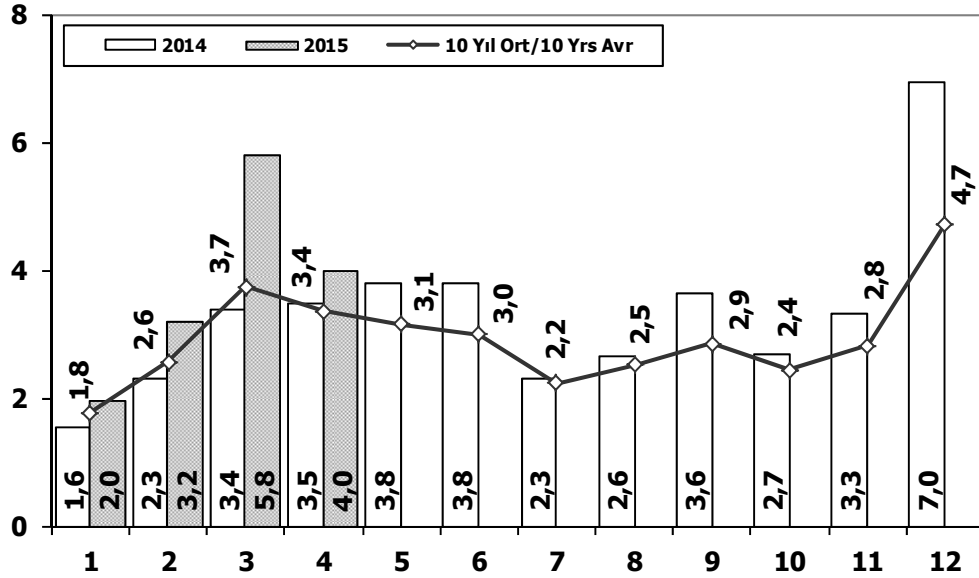


Aylar / Months	10 Yıl Ort. 10 Yrs Avr.	2015	%
1	213	176	-17
2	250	213	-15
3	312	347	11
4	305	426	40
Total	1.081	1.162	8

	1	2	3	4	5	6	7	8	9	10	11	12	4 Ay/Mo	Total
2005	182	258	432	393	439	269	252	459	436	329	328	574	1.265	4.351
2006	207	297	406	388	381	266	230	353	322	253	305	401	1.298	3.809
2007	207	272	404	238	302	283	164	365	399	279	283	465	1.121	3.661
2008	391	476	436	512	419	331	368	380	341	352	246	270	1.815	4.522
2009	154	124	160	220	174	198	160	175	168	143	206	323	658	2.205
2010	155	131	185	167	140	138	129	246	236	206	202	437	638	2.372
2011	138	195	294	316	280	258	211	305	301	276	260	270	943	3.104
2012	179	257	277	229	257	239	216	249	325	269	189	398	942	3.084
2013	191	268	289	276	283	241	367	235	305	392	415	697	1.024	3.959
2014	335	265	326	280	206	223	161	174	229	140	226	454	1.206	3.019
2015	176	213	347	426	0	0	0	0	0	0	0	0	1.162	1.162

Ağır Ticari Araç Pazarının Analizi (x1000)

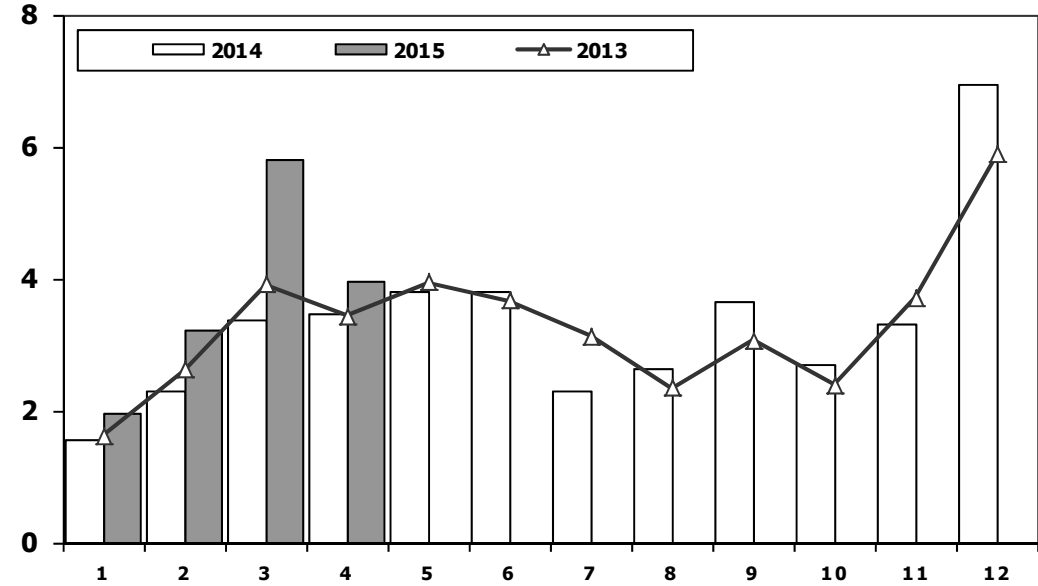
HCV Market Analysis (x1000)



Aylar / Months	10 Yil Ort. 10 Yrs Avr. (x1000)	2015 (x1000)	%
1	1,8	2,0	10,9
2	2,6	3,2	24,8
3	3,7	5,8	55,2
4	3,4	4,0	18,2
Total	11,4	14,9	30,7

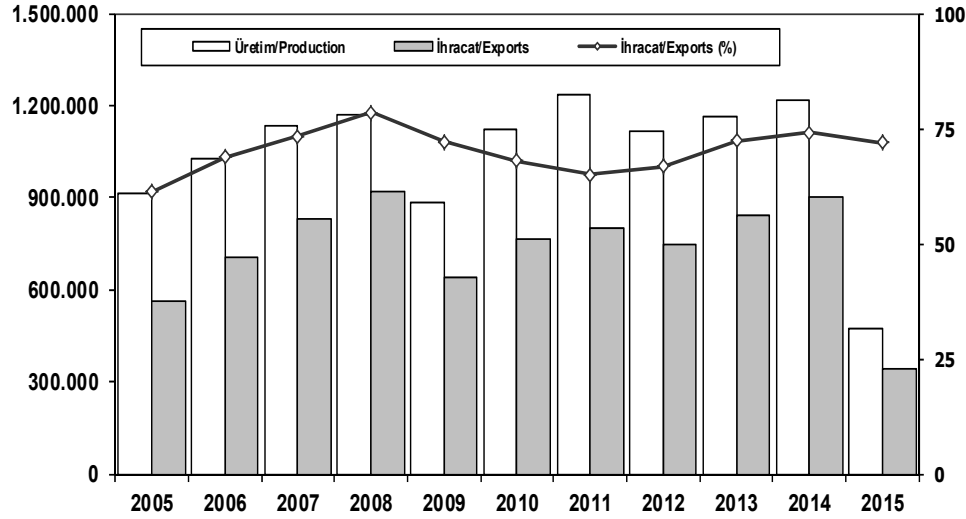
Ağır Ticari Araç Pazarı (x1000)

HCV Market (x1000)



	1	2	3	4	5	6	7	8	9	10	11	12	4 Ay/Mo	Total
2005	1.940	2.525	3.795	4.029	4.026	3.583	2.832	4.636	4.626	4.153	4.355	7.629	12.289	48.129
2006	2.052	3.708	5.038	4.815	5.060	3.848	2.786	3.607	3.520	3.263	4.031	5.935	15.613	47.663
2007	1.833	2.518	3.598	3.267	3.317	2.987	2.627	3.613	3.497	3.333	3.704	5.150	11.216	39.444
2008	2.265	2.870	3.165	3.266	3.029	3.069	2.536	2.922	2.897	2.263	1.899	2.340	11.566	32.521
2009	1.025	1.104	1.420	1.786	1.696	2.035	1.401	1.483	2.006	1.084	1.240	2.463	5.335	18.743
2010	955	1.141	2.059	2.133	2.251	2.494	2.373	2.881	2.787	3.376	3.444	6.365	6.288	32.259
2011	2.766	3.685	4.930	4.376	4.447	4.290	2.320	2.972	3.514	3.219	3.538	6.371	15.757	46.428
2012	1.674	2.503	4.073	3.065	3.957	3.714	2.818	2.700	3.568	2.739	3.335	5.713	11.315	39.859
2013	1.617	2.624	3.914	3.440	3.953	3.675	3.130	2.340	3.074	2.385	3.716	5.878	11.595	39.746
2014	1.555	2.287	3.383	3.461	3.788	3.789	2.299	2.640	3.649	2.686	3.316	6.952	10.686	39.805
2015	1.963	3.201	5.802	3.969	0	0	0	0	0	0	0	0	14.935	14.935

İhracat/Üretim (2005-2015) Exports/Production (2005-2015)



	2005	2006	2007	2008	2009	2010	2011	2012	2013	2014	2015
Üretim/Production	916.062	1.026.427	1.132.951	1.171.917	884.466	1.124.982	1.234.637	1.115.233	1.166.043	1.218.848	471.729
İhracat/Exports	561.078	706.402	829.879	920.763	637.855	763.670	801.112	745.354	843.467	902.194	339.348
İhracat/Exports (%)	61	69	73	79	72	68	65	67	72	74	72

Taşıt Araçları İhracatı (2013-2015) Motor Vehicle Exports (2013-2015)

SEKTÖR/SECTOR	2013	2014	2014	2015	2014/2015 (%)
			4 Ay-4 Mo		
OTOMOBİL/ P.Cars	484.504	581.993	192.353	210.731	10
TİCARİ ARAÇLAR / CV	343.967	303.187	93.336	123.827	33
* Kamyonet/Pick-Up	300.765	269.995	84.188	105.590	25
* Minibüs/Minibus	34.664	26.458	7.308	16.112	120
* Kamyon/Truck	3.055	1.281	299	286	-4
* Midibüs/Midibus	985	824	249	108	-57
* Otobüs/Bus	4.498	4.629	1.292	1.731	34
TAŞIT ARAÇLARI /MV TOTAL	828.471	885.180	285.689	334.558	17
TRAKTÖR/F.TRACTOR	14.996	17.014	4.729	4.790	1
TOTAL	843.467	902.194	290.418	339.348	17

Otomotiv Ana ve Yan Sanayii İhracatı (ABD \$) CBU and CKD Exports - \$

SEKTÖR/SECTOR	2012 Toplam	2013 Toplam	2014 Toplam	2014	2015	2015/2014 (%)
				4 Ay (4 Months)		
Toplam Yan Sanayi/Total Component Industry	8.215.954.295	9.065.017.539	9.508.032.776	3.328.108.267	2.862.708.599	-14
İç ve Dış Lastik / Tyres	1.199.572.093	1.130.005.892	1.126.947.745	431.345.418	322.462.108	-25
Emniyet Camı / Safety Glasses	120.641.763	135.230.310	143.231.168	52.779.463	43.458.287	-18
Motor (Engine)	272.085.582	319.294.885	171.893.752	61.959.711	45.783.708	-26
Akümülatör / Batteries	250.104.807	306.451.449	289.150.764	86.351.639	67.004.889	-22
Diğer Aksam ve Parça / Spare Parts&Components	6.373.550.048	7.174.035.002	7.776.809.346	2.695.672.036	2.383.999.606	-12
Toplam Ana Sanayi/Total Vehicle Industry	11.100.457.162	12.491.591.365	13.272.198.027	4.439.151.801	4.327.614.965	-3
Otobüs / Bus	855.424.304	937.790.963	985.983.007	293.923.194	310.905.828	6
Midibüs-Minibüs / Minibus- Minibus	161.806.275	147.769.644	97.685.509	13.084.495	49.638.194	279
Otomobil (P. Cars)	6.068.045.119	6.855.475.590	7.270.836.596	2.528.712.067	2.420.087.674	-4
Kamyon-Kamyonet/HCV-LCV	3.433.310.999	3.918.798.755	4.201.921.030	1.389.510.226	1.337.775.392	-4
Çekici/Truck-Tractor	71.336.635	218.385.732	252.416.256	84.756.721	85.429.848	1
Römork ve Yan Römork/Trailer-Semi Trailer	195.093.537	77.907.407	38.396.525	9.753.205	10.141.799	4
Tarım Traktörü/Farm Tractor	315.440.294	335.463.275	424.959.103	119.411.893	113.636.230	-5
Toplam/Total	19.316.411.457	21.556.608.904	22.780.230.802	7.767.260.068	7.190.323.564	-7

Kaynak: Otomotiv Endüstrisi İhracatçıları Birliği

Firma Bazında İhracat (Adet)
Export Of member Companies (Unit)

FİRMALAR Companies	2013	2014	Ocak-Nisan 4 Months	
			2014	2015
OYAK RENAULT	266.508	257.992	86.867	98.178
HYUNDAI ASSAN	85.500	179.793	53.625	64.970
TOFAŞ	160.309	142.234	48.580	58.235
TOYOTA	86.908	109.517	41.721	30.277
FORD OTOSAN	208.722	187.921	52.806	80.294
TÜRK TRAKTÖR	14.402	15.866	4.381	4.581
HONDA TÜRKİYE	2.121	1.560	450	476
M. BENZ TÜRK	5.331	3.438	854	1.253
MAN TÜRKİYE	898	937	348	588
A.I.O.S.	770	748	259	75
HATTAT TARIM	594	1.148	348	209
TEMSA GLOBAL	663	423	127	60
KARSAN	10.120	37	8	23
OTOKAR	620	580	44	129
BMC	1	0	0	0
TOTAL	843.467	902.194	290.418	339.348

Kaynak: OSD

Sektör Bazında İhracat (\$)
Exports on Sectorial Basis

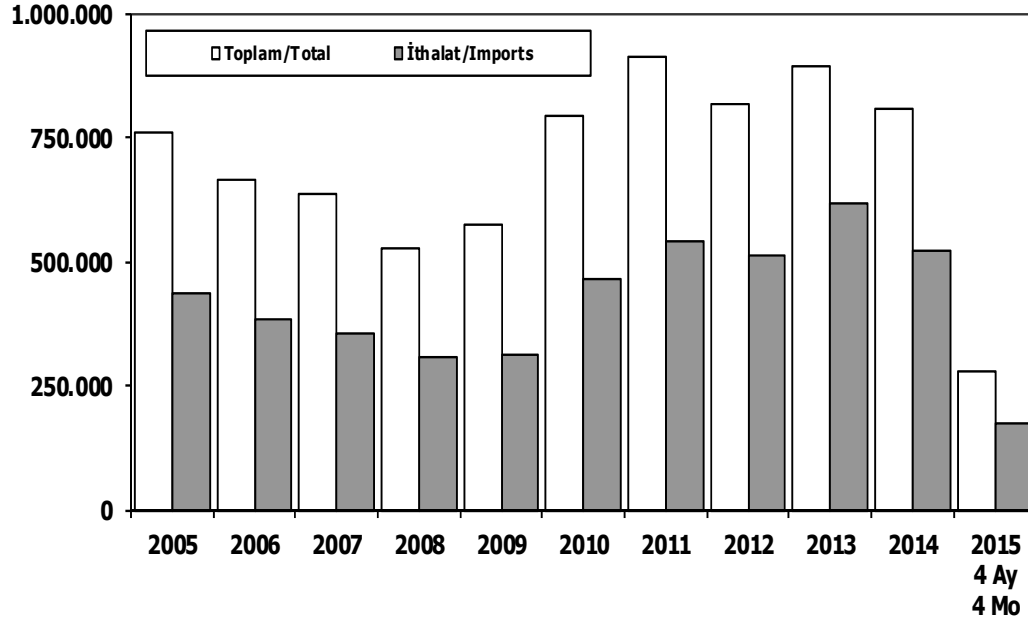
SEKTÖRLER / Sectors	NİSAN (April)				OCAK-NİSAN (January-April)			
	2014	2015	2015/2014 (%)	2015 (%)	2014	2015	2015/2014 (%)	2015 (%)
Otomotiv Endüstrisi	2.085.927	1.843.349	-11,6	15,6	7.631.017	7.046.785	-7,7	14,4
Hazırlanmış ve Konfeksiyon	1.543.768	1.391.142	-9,9	11,8	6.215.091	5.370.754	-13,6	11,0
Kimyevi Maddeler ve Mamulleri	1.481.193	1.437.212	-3,0	12,2	5.779.927	5.160.208	-10,7	10,5
İhracatçı Birlikleri Kaydından Muaf İhracat	**	**	**	**	3.123.344	4.682.441	49,9	9,6
Çelik	1.200.628	987.239	-17,8	8,3	4.668.208	3.743.379	-19,8	7,6
Elektrik Elektronik ve Hizmet	1.079.057	886.310	-17,9	7,5	3.959.412	3.290.384	-16,9	6,7
Tekstil ve Hammaddeleri	790.452	725.723	-8,2	6,1	3.044.307	2.665.007	-12,5	5,4
Hububat, Bakliyat, Yağlı Tohumlar ve Mam	610.687	488.986	-19,9	4,1	2.379.310	2.102.629	-11,6	4,3
Demir ve Demir Dışı Metaller	648.814	567.628	-12,5	4,8	2.407.619	2.062.119	-14,4	4,2
Makine ve Aksamları	525.178	497.677	-5,2	4,2	1.977.781	1.850.851	-6,4	3,8
Mobilya, Kağıt ve Orman Ürünleri	394.701	364.432	-7,7	3,1	1.470.014	1.331.364	-9,4	2,7
İklimlendirme Sanayii	393.690	336.532	-14,5	2,8	1.478.378	1.222.528	-17,3	2,5
Madencilik Ürünleri	412.196	350.928	-14,9	3,0	1.503.308	1.185.123	-21,2	2,4
Çimento Cam Seramik ve Toprak Ürünleri	308.166	264.815	-14,1	2,2	1.069.361	936.231	-12,4	1,9
Findık ve Mamulleri	148.896	245.109	64,6	2,1	639.568	934.071	46,0	1,9
Mücevher	207.717	250.553	20,6	2,1	795.185	841.738	5,9	1,7
Su Ürünleri ve Hayvansal Mamuller	203.889	172.731	-15,3	1,5	792.692	683.938	-13,7	1,4
Yaş Meyve ve Sebze	177.393	125.068	-29,5	1,1	789.485	652.245	-17,4	1,3
Hali	203.832	178.121	-12,6	1,5	750.212	636.882	-15,1	1,3
Deri ve Deri Mamulleri	154.749	146.489	-5,3	1,2	567.162	519.714	-8,4	1,1
Savunma ve Havaçılık Sanayii	133.668	128.254	-4,1	1,1	454.672	460.878	1,4	0,9
Kuru Meyve ve Mamulleri	110.831	111.944	1,0	0,9	443.605	402.780	-9,2	0,8
Meyve Sebze Mamulleri	121.027	106.349	-12,1	0,9	464.642	402.396	-13,4	0,8
Tütün ve Mamulleri	48.540	72.639	49,6	0,6	349.422	350.315	0,3	0,7
Gemi ve Yat	76.354	103.764	35,9	0,9	317.198	272.594	-14,1	0,6
Zeytin ve Zeytinyağı	19.990	18.271	-8,6	0,2	90.532	73.346	-19,0	0,1
Süs Bitkileri	13.281	10.702	-19,4	0,1	39.964	37.113	-7,1	0,1
Diğer Sanayi Ürünleri	12.031	11.615	-3,5	0,1	38.962	33.504	-14,0	0,1
TOPLAM / Total	13.106.654	11.823.581	-9,8	100	53.240.378	48.951.319	-8,1	100

Kaynak: TİM

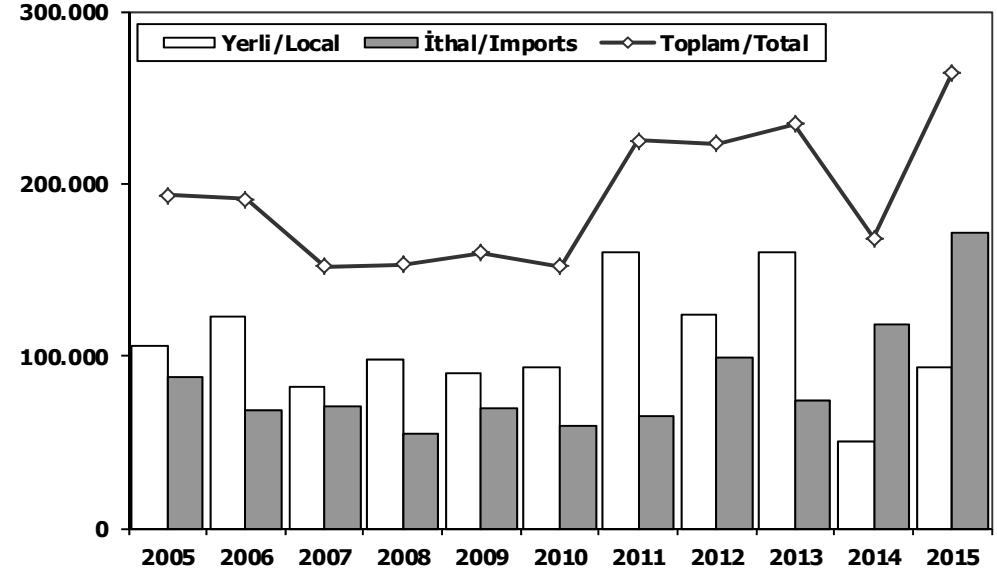
First 3 Sectors:

- 1- Transport Vehicle and Component Industry
- 2- Ready Wear and Confection
- 3- Chemical Articles and Products

Toplam Pazar (Otomobil+T.Araç) Total Market (P.Cars+C.V)



Hafif Araçlar Pazarı (2005-2015 Ocak-Nisan) LV Market (2005-2015 January-April)

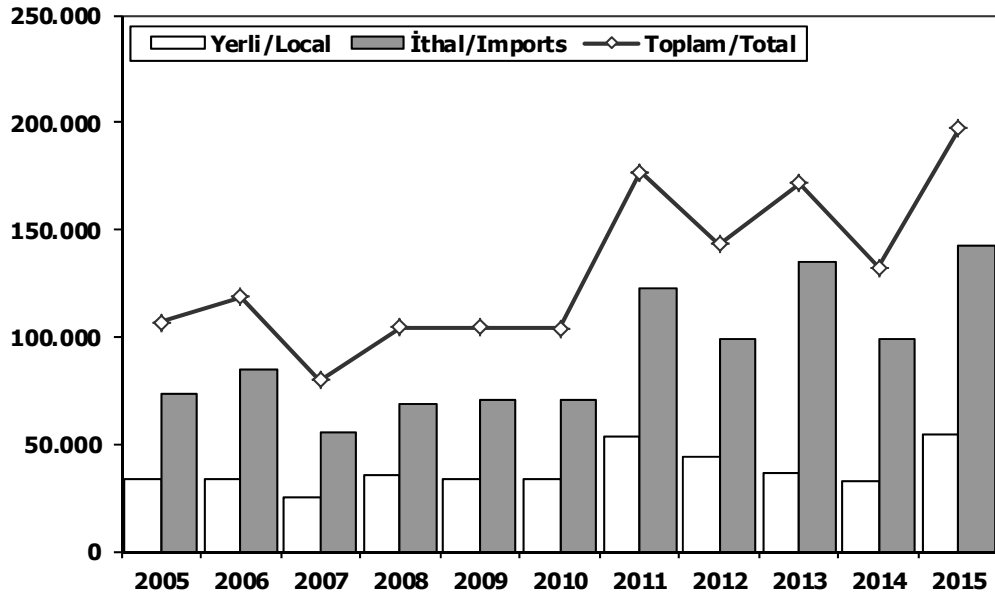


	2005	2006	2007	2008	2009	2010	2011	2012	2013	2014	2014 4 Ay 4 Mo	2015 4 Ay 4 Mo
Toplam/Total	758.537	665.515	634.206	526.544	575.869	793.172	910.867	817.620	893.124	807.486	174.746	279.785
İthalat/Imports	436.033	382.460	355.752	306.087	313.921	465.408	538.532	511.694	615.609	522.842	120.698	174.746
İthalat/Imports (%)	57	57	56	58	55	59	59	63	69	65	69	62

	2005	2006	2007	2008	2009	2010	2011	2012	2013	2014	2015
Yerli/Local	105.484	122.316	81.520	98.180	90.132	93.098	160.358	124.181	160.345	50.531	92.883
İthal/Imports	87.790	68.580	70.629	55.037	69.948	58.967	64.884	99.295	74.521	118.046	171.967
Toplam/Total	193.274	190.896	152.149	153.217	160.080	152.065	225.242	223.476	234.866	168.577	264.850
İthalat/Imports (%)	45	36	46	36	44	39	29	44	32	70	65

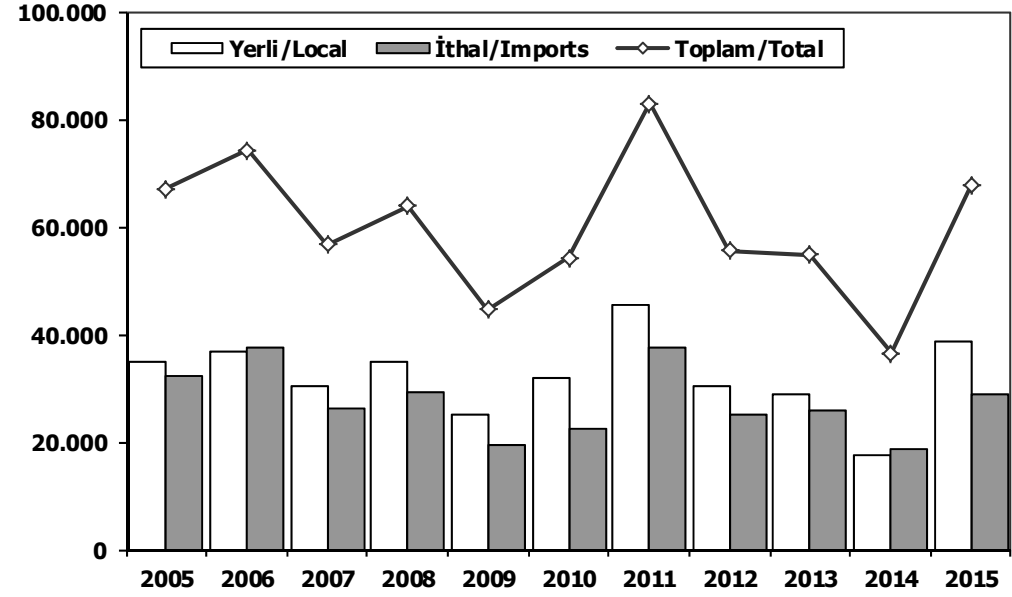
Otomobil Pazarı (2005-2015 Ocak-Nisan)

P.Cars Market (2005-2015 January-April)



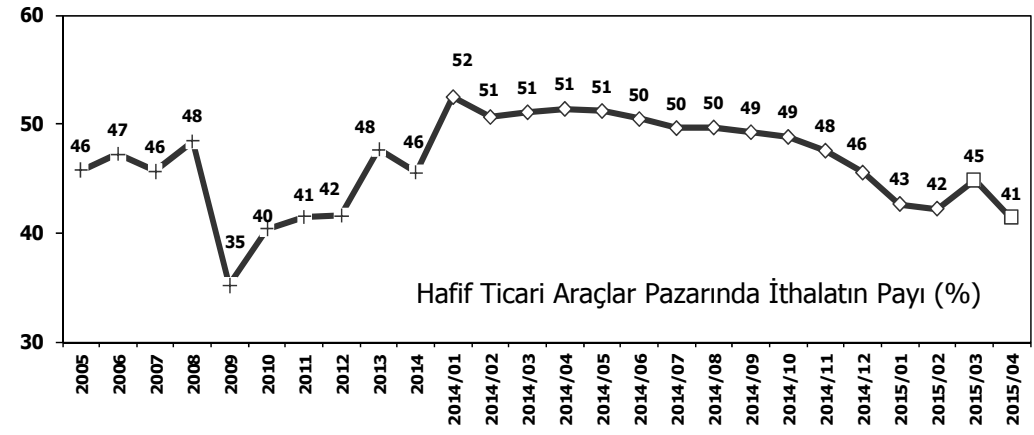
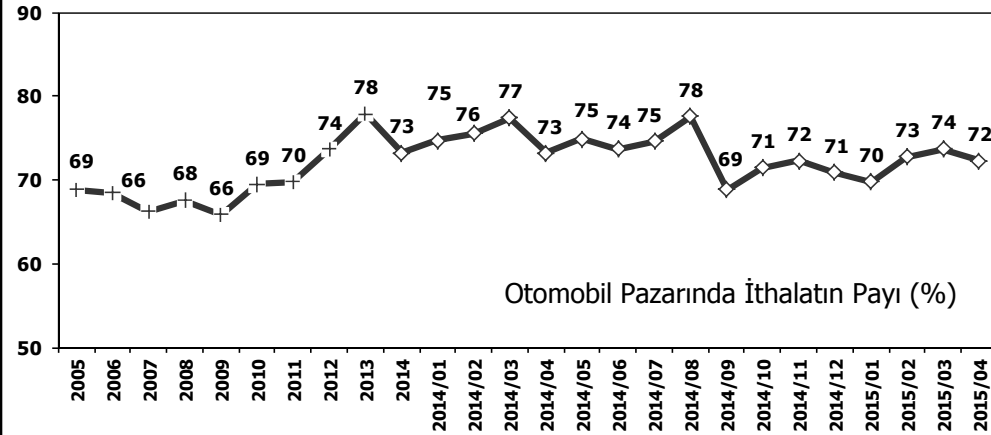
Hafif Ticari Araçlar Pazarı (2005-2015 Ocak-Nisan)

Light Commercial Vehicle Market (2005-2015 January-April)



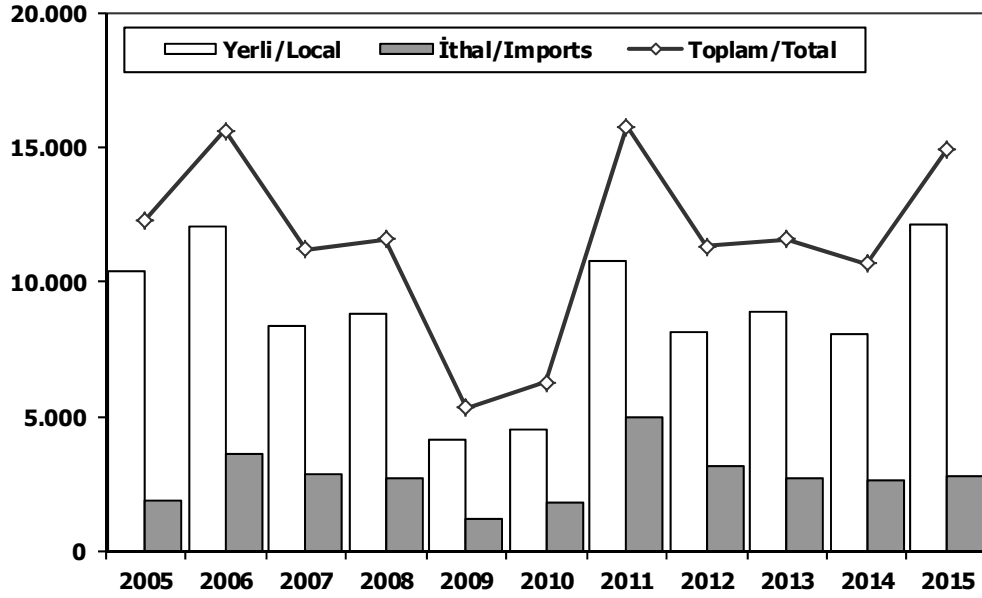
	2005	2006	2007	2008	2009	2010	2011	2012	2013	2014	2015
Yerli/Local	33.846	33.897	24.676	35.175	33.776	33.164	53.940	44.255	36.802	32.808	54.215
İthal/Imports	73.096	84.711	55.262	69.069	70.713	70.588	122.790	98.926	134.631	99.308	142.987
Toplam/Total	106.942	118.608	79.938	104.244	104.489	103.752	176.730	143.181	171.433	132.116	197.202
İthalat/Imports (%)	68	71	69	66	68	68	69	69	79	75	73

	2005	2006	2007	2008	2009	2010	2011	2012	2013	2014	2015
Yerli/Local	34.734	36.732	30.361	34.773	25.191	31.720	45.355	30.266	29.032	17.723	38.668
İthal/Imports	32.388	37.605	26.258	29.111	19.419	22.510	37.568	25.255	25.714	18.738	28.980
Toplam/Total	67.122	74.337	56.619	63.884	44.610	54.230	82.923	55.521	54.746	36.461	67.648
İthalat/Imports (%)	48	51	46	46	44	42	45	45	47	51	43



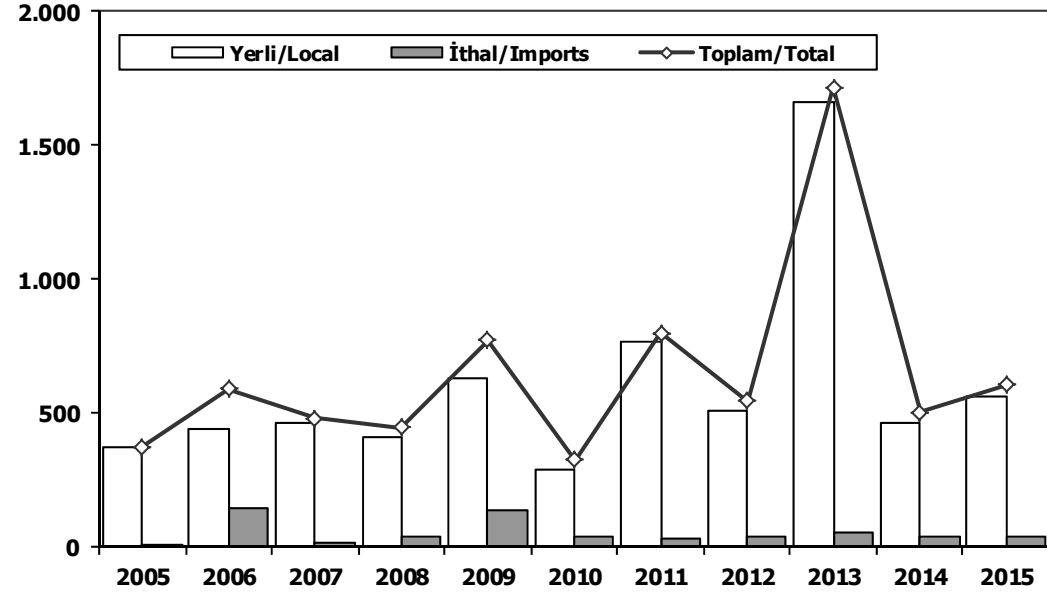
Ağır Ticari Araçlar Pazarı (2005-2015 Ocak-Nisan)

HCV Market (2005-2015 January-April)



Otobüs Pazarı (2005-2015 Ocak-Nisan)

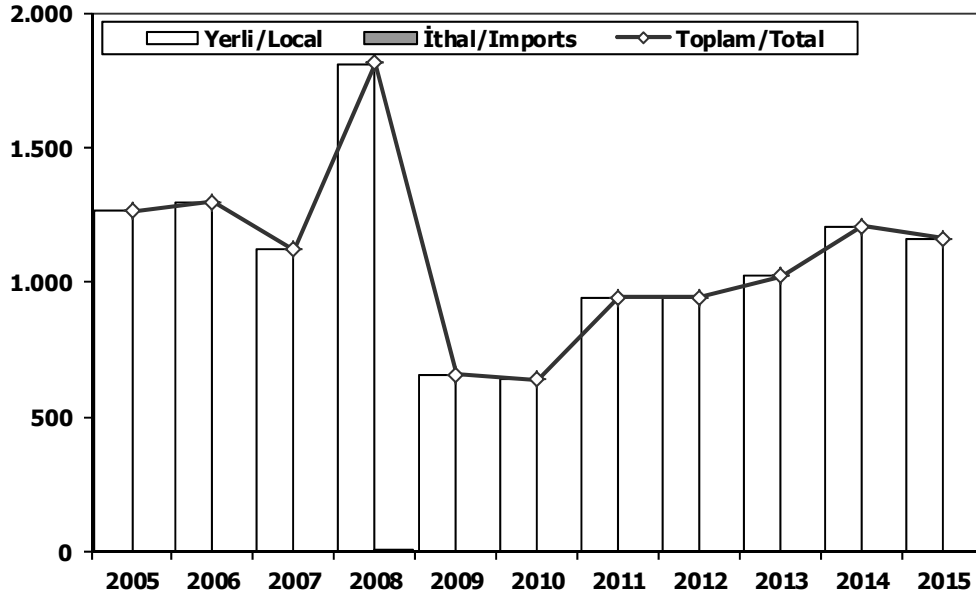
Bus Market (2005-2015 January-April)



	2005	2006	2007	2008	2009	2010	2011	2012	2013	2014	2015
Yerli/Local	10.404	12.026	8.327	8.825	4.165	4.482	10.809	8.118	8.886	8.034	11.489
İthal/Imports	1.885	3.587	2.889	2.741	1.170	1.806	4.948	3.197	2.709	2.652	3.446
Toplam/Total	12.289	15.613	11.216	11.566	5.335	6.288	15.757	11.315	11.595	10.686	14.935
İthalat/Imports (%)	15	23	26	24	22	29	31	28	23	25	23

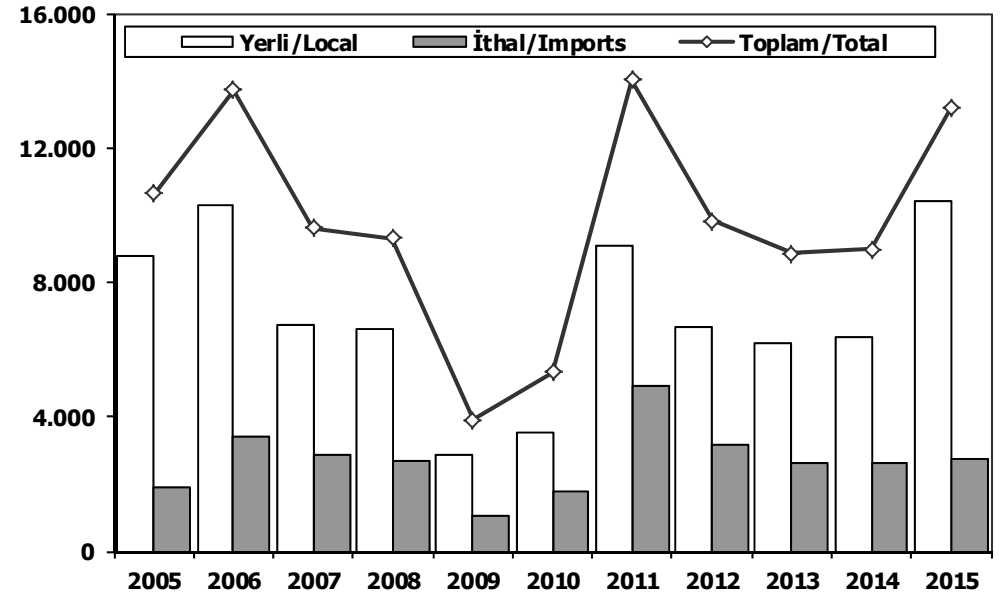
	2005	2006	2007	2008	2009	2010	2011	2012	2013	2014	2015
Yerli/Local	369	443	467	410	631	289	767	508	1.661	464	564
İthal/Imports	4	148	14	36	140	37	31	39	55	40	40
Toplam/Total	373	591	481	446	771	326	798	547	1.716	504	604
İthalat/Imports (%)	1	25	3	8	18	11	4	7	3	8	7

Midibüs Pazarı (2005-2015 Ocak-Nisan) (7-9 mt / 25-35 Kişilik)
Midibus (2005-2015 January-April) Market (7-9 mt / 25-35 Passengers)



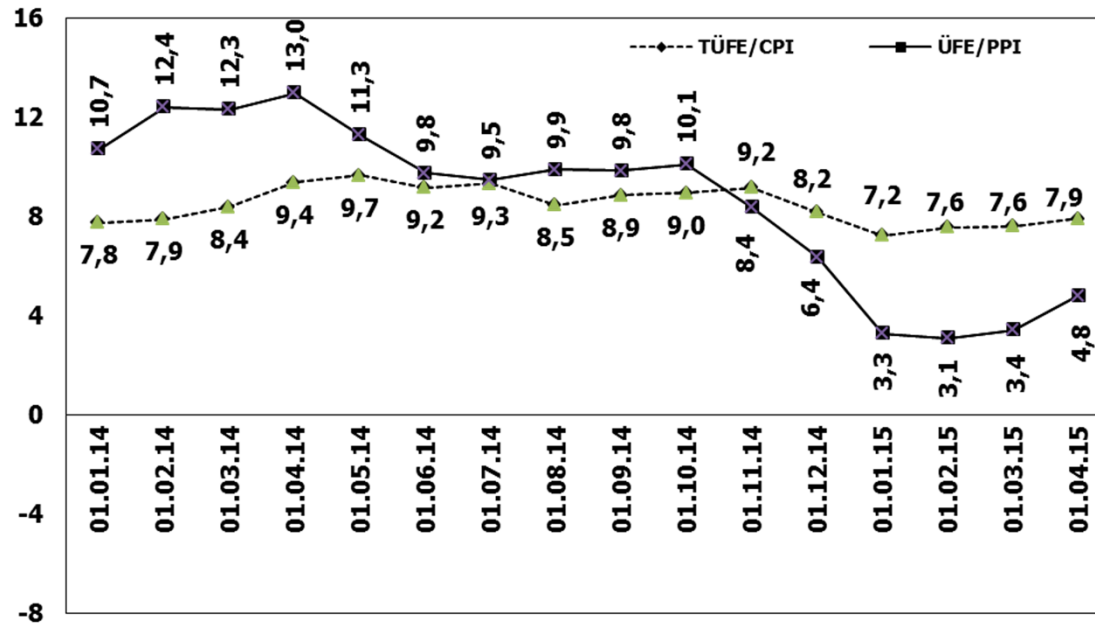
	2005	2006	2007	2008	2009	2010	2011	2012	2013	2014	2015
Yerli/Local	1.265	1.298	1.121	1.806	658	638	943	942	1.024	1.206	1.162
İthal/Imports	0	0	0	9	0	0	0	0	0	0	0
Toplam/Total	1.265	1.298	1.121	1.815	658	638	943	942	1.024	1.206	1.162
İthalat/Imports (%)	0	0	0	0	0	0	0	0	0	0	0

Kamyon Pazarı (2005-2015 Ocak-Nisan)
Truck Market (2005-2015 January-April)

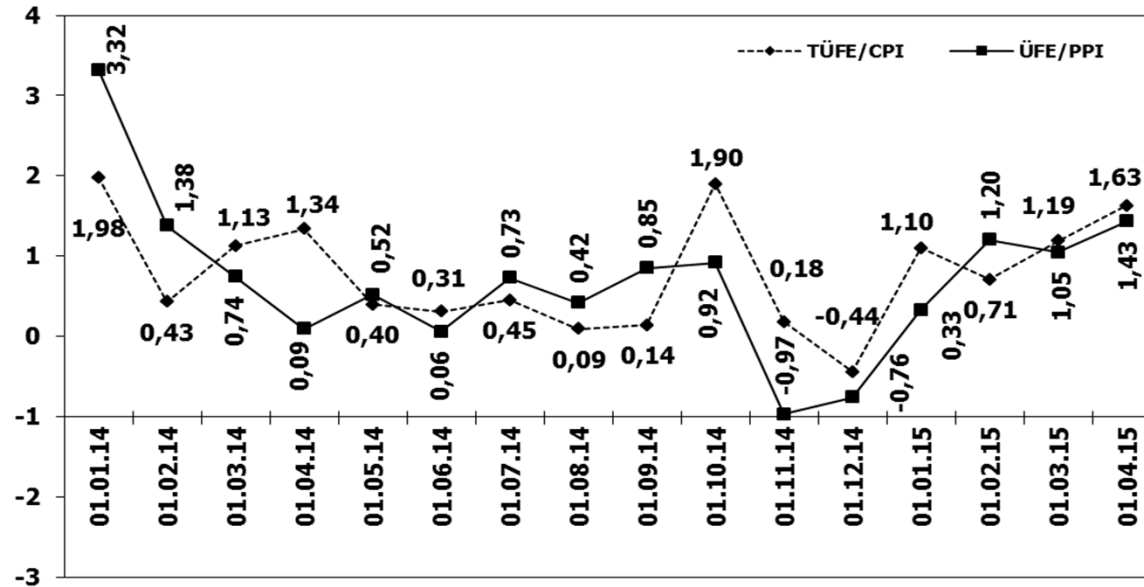


	2005	2006	2007	2008	2009	2010	2011	2012	2013	2014	2015
Yerli/Local	8.770	10.285	6.739	6.609	2.876	3.555	9.099	6.668	6.201	6.364	9.763
İthal/Imports	1.881	3.439	2.875	2.696	1.030	1.769	4.917	3.158	2.654	2.612	3.406
Toplam/Total	10.651	13.724	9.614	9.305	3.906	5.324	14.016	9.826	8.855	8.976	13.169
İthalat/Imports (%)	18	25	30	29	26	33	35	32	30	29	26

TÜFE ve ÜFE'nin Yıllık Değişimi (%) CPI and PPI Yearly Changes (%)



TÜFE ve ÜFE'nin Aylık Değişimi (%) CPI and PPI Monthly Changes (%)



2015 Yılı İthal Hafif Araç Satışları 2015 Light Vehicles Import Sales

2015 YILI İTHAL OTOMOBİL SATIŞLARI / P.Cars Import 2015

	2014 TOPLAMI 2014 Total	1	2	3	4	5	6	7	8	9	10	11	12	2015 TOPLAMI 2015 Total
VOLKSWAGEN	84.646	4.491	6.942	9.711	10.487									31.631
FORD	35.682	1.101	2.782	3.636	4.681									12.200
OPEL	39.255	952	2.239	3.964	4.753									11.908
DACIA	27.897	1.709	2.289	2.968	2.872									9.838
B.M.W	26.174	1.219	1.536	2.369	2.717									7.841
RENAULT	25.572	653	1.309	2.874	1.927									6.763
PEUGEOT	17.026	846	1.110	2.039	2.635									6.630
SKODA	14.537	515	1.568	2.120	2.355									6.558
NISSAN	19.422	949	1.372	1.859	2.304									6.484
MERCEDES	23.100	417	1.384	2.200	2.135									6.136
HYUNDAI	21.685	784	1.011	1.884	2.259									5.938
AUDI	17.809	610	1.103	1.685	2.006									5.404
CITROEN	14.389	683	941	1.522	2.077									5.223
SEAT	12.697	164	1.103	1.496	1.852									4.615
TOYOTA	10.146	327	535	1.070	1.547									3.479
KIA	11.017	330	676	1.183	1.245									3.434
VOLVO	6.060	295	290	657	751									1.993
FIAT	6.179	248	377	481	617									1.723
JEEP	1.960	239	281	308	383									1.211
HONDA	3.269	98	241	273	152									764
SUBARU	1.402	65	40	261	176									542
LAND ROVER	1.207	31	87	240	94									452
MITSUBISHI	1.159	64	64	92	149									369
MINI (İngiliz)	1.071	21	47	139	136									343
MAZDA	1.291	27	80	49	87									243
PROTON	707	55	40	67	70									232
ALFA ROMEO	967	34	59	56	76									225
PORSCHE	588	45	48	53	47									193
CHERY	325	26	38	46	39									149
SSANGYONG	531	44	21	31	29									125
SUZUKI	958	27	17	20	28									92
TATA	126	21	24	21	19									85
JAGUAR	52	0	25	50	7									82
SMART	76	4	3	10	11									28
GEELY	95	4	7	3	6									20
MASERATI	83	2	2	3	9									16
BENTLEY	21	0	4	1	0									5
LAMBORGHINI	2	1	1	2	1									5
FERRARI	11	0	0	1	2									3
INFINITI	6	1	1	1	0									3
LANCIA	210	0	2	0	0									2
CHEVROLET	572	0	0	0	0									0
TOPLAM	429.982	17.102	29.699	45.445	50.741	0	0	0	0	0	0	0	0	142.987

2015 YILI İTHAL HAFİF TİCARİ ARAÇ SATIŞLARI / Light Commercial Vehicles Import 2015

	2014 TOPLAMI 2014 Total	1	2	3	4	5	6	7	8	9	10	11	12	2015 TOPLAMI 2015 Total
VOLKSWAGEN	24.001	1.336	2.575	3.182	2.680									9.773
RENAULT	8.716	501	673	1.104	1.030									3.308
MERCEDES	8.028	391	424	1.009	654									2.478
FIAT	7.664	347	491	782	815									2.435
PEUGEOT	5.832	303	403	704	824									2.234
CITROEN	6.048	269	392	730	684									2.075
DACIA	6.572	250	242	696	642									1.830
MITSUBISHI	4.188	390	324	518	246									1.478
KIA	2.057	147	221	136	444									948
IVECO	2.524	117	139	282	235									773
TOYOTA	1.670	73	45	255	207									580
HYUNDAI	1.565	89	104	164	208									565
SSANGYONG	626	31	34	69	71									205
ISUZU	1.728	27	19	32	59									137
TATA	290	22	21	23	21									87
FORD	333	22	22	5	22									71
NISSAN	275	1	0	0	2									3
MAZDA	9	0	0	0	0									0
TOPLAM	82.126	4.316	6.129	9.691	8.844	0	0	0	0	0	0	0	0	28.980