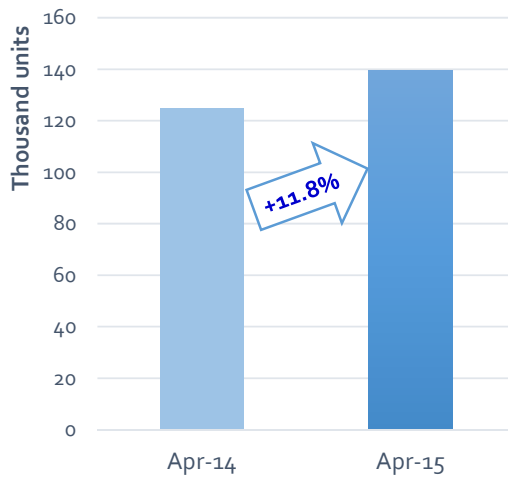


PRESS EMBARGO: 8.00 AM (6.00 AM GMT), 27 May 2015

**NEW COMMERCIAL VEHICLE REGISTRATIONS
EUROPEAN UNION¹**

April 2015

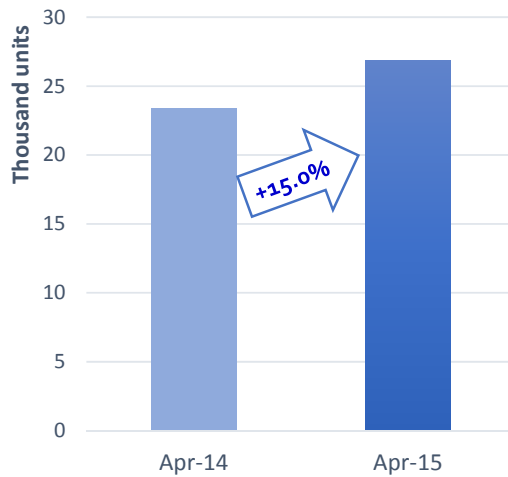
LCVs up to 3.5t



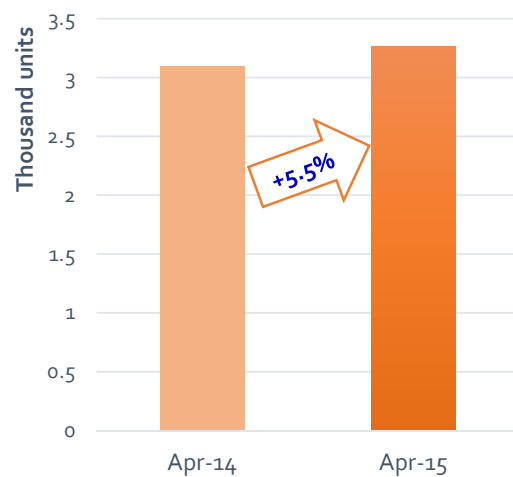
HCVs of 16t and over



Medium & heavy CVs over 3.5t



Buses & coaches over 3.5t



Next Press Release: Friday 26 June 2015

¹ Data for Malta unavailable

NEW COMMERCIAL VEHICLE registrations: +13.0% over four months; +12.2% in April

Total new Commercial Vehicles

In April 2015, demand for new commercial vehicles in the EU continued to expand (+12.2%), totalling 169,746 units. Growth was sustained across all commercial vehicle segments. The UK (+22.8%) and Spain (+18.5%) posted double-digit growth, followed by Italy (+9.0%), Germany (+7.0%) and France (+1.4%), which also saw their demand increase, contributing to the overall expansion.

Four months into the year, the EU market expanded by 13.0%, totalling 671,701 commercial vehicles. Over the period, Spain (+35.2%), the UK (+23.9%) Italy (+7.6%) and Germany (+7.1%) all posted growth, while France remained stable (+0.01%).

New Light Commercial Vehicles up to 3.5t – vans

In April 2015, new registrations of light commercial vehicles totalled 139,598 units, up 11.8% compared to April 2014. This marked the twentieth consecutive month of growth in this segment. The UK (+20.9%), Spain (+17.6%), Germany (+11.9%) and Italy (+8.8%) contributed positively to the upturn, while France was only major market to record a slight decline (-0.3%).

From January to April 2015, 558,419 new vans were registered in the EU, or 13.1% more than in the same period last year. All major markets saw their demand for vans increase over this period, especially Spain (+36.2%), the UK (+22.0%) and Germany (+10.9%) which posted double-digit growth.

New Heavy Commercial Vehicles over 16t (excluding Heavy Buses & Coaches) – heavy trucks

April 2015 results showed a 20.8% increase in new heavy truck registrations, totalling 21,543 units. This positive outcome was mainly sustained by the significant growth recorded in the UK (+79.2%), Spain (+38.6%) and France (+24.1%). Noteworthy was the contribution of the new EU member states (+32.2%) to last month's positive outcome.

Four months into the year, the EU market grew by 17.0%, reaching 82,039 units. The UK (+70.6%), Spain (+26.7%), Italy (+12.1%) and Germany (+2.3%) saw their demand for heavy trucks increase, while the French market remained stable (+0.3%). The impressive growth recorded in the Netherlands (+105.8%) persisted during this period.

New Medium & Heavy Commercial Vehicles over 3.5t (excluding Buses & Coaches) – trucks

In April 2015, 26,883 new trucks were registered in the EU, up 15.0% compared to April 2014. Among major markets the UK (+52.3%), Spain (+25.7%) and France (+16.2%) posted double-digit growth, while Italy remained stable and Germany (-3.8%) performed less well than in April 2014.

From January to April 2015, results for trucks were diverse, with France (-2.8%) and Germany (-1.8%) performing less well than in the same period last year, while Spain (+23.3%) and the UK (+47.0%) recorded significant increases. Overall, the EU recorded 101,107 new trucks, or 11.9% more than in April 2014.

New Buses & Coaches over 3.5t

In April 2015, new bus and coach registrations increased (+5.5%) compared to April 2014. Italy (+83.3%), Spain (+28.3%) and France (+20.6%) mainly contributed to this positive result.

From January to April 2015, the EU market increased by 17.1%, totalling 12,175 new buses and coaches. Demand was driven primarily by Spain (+74.2%), Italy (+27.3%) the UK (+15.7%).

P R E S S R E L E A S E

PRESS EMBARGO FOR ALL DATA :

8.00 AM (6.00 AM GMT), 27 May 2015

PROVISIONAL EU¹+EFTA COUNTRIES NEW REGISTRATION FIGURES BY MARKET NEW LIGHT COMMERCIAL VEHICLES up to 3.5t²

27/05/15

	April '15	April '14	% Change	Jan-Apr '15	Jan-Apr '14	% Change
AUSTRIA	3,142	2,994	4.9%	10,460	10,243	2.1%
BELGIUM	6,257	5,238	19.5%	23,167	20,661	12.1%
BULGARIA	320	352	-9.1%	1,436	1,270	13.1%
CROATIA	608	586	3.8%	2,054	2,229	-7.9%
CYPRUS	96	83	15.7%	338	309	9.4%
CZECH REPUBLIC	1,417	1,142	24.1%	5,478	3,948	38.8%
DENMARK	2,668	2,155	23.8%	10,269	8,632	19.0%
ESTONIA	322	247	30.4%	1,284	959	33.9%
FINLAND	961	885	8.6%	3,906	3,587	8.9%
FRANCE	33,087	33,200	-0.3%	124,037	123,788	0.2%
GERMANY	20,202	18,047	11.9%	73,278	66,063	10.9%
GREECE	568	369	53.9%	2,480	1,464	69.4%
HUNGARY	1,335	1,251	6.7%	5,502	4,341	26.7%
IRELAND	2,077	1,316	57.8%	12,137	7,615	59.4%
ITALY ³	10,500	9,655	8.8%	40,420	37,799	6.9%
LATVIA	214	162	32.1%	749	763	-1.8%
LITHUANIA	155	177	-12.4%	733	677	8.3%
LUXEMBURG	311	350	-11.1%	1,220	1,201	1.6%
NETHERLANDS	4,615	4,226	9.2%	21,125	19,874	6.3%
POLAND	4,028	3,291	22.4%	15,914	13,742	15.8%
PORTUGAL	2,398	2,052	16.9%	9,087	7,796	16.6%
ROMANIA	806	763	5.6%	3,121	2,779	12.3%
SLOVAKIA	648	445	45.6%	2,098	1,615	29.9%
SLOVENIA	628	680	-7.6%	2,329	2,688	-13.4%
SPAIN	12,933	10,996	17.6%	48,639	35,701	36.2%
SWEDEN	4,375	3,586	22.0%	14,456	13,564	6.6%
UNITED KINGDOM	24,927	20,620	20.9%	122,702	100,537	22.0%
EUROPEAN UNION¹	139,598	124,868	11.8%	558,419	493,845	13.1%
EU15⁴	129,021	115,689	11.5%	517,383	458,525	12.8%
EU12⁵	10,577	9,179	15.2%	41,036	35,320	16.2%
ICELAND	139	70	98.6%	417	273	52.7%
NORWAY	2,887	2,574	12.2%	10,493	9,446	11.1%
SWITZERLAND	2,584	2,716	-4.9%	10,281	9,783	5.1%
EFTA	5,610	5,360	4.7%	21,191	19,502	8.7%
EU+EFTA	145,208	130,228	11.5%	579,610	513,347	12.9%
WESTERN EUROPE (EU15+EFTA)	134,631	121,049	11.2%	538,574	478,027	12.7%

SOURCE: NATIONAL AUTOMOBILE MANUFACTURERS' ASSOCIATIONS

¹ Data for Malta unavailable

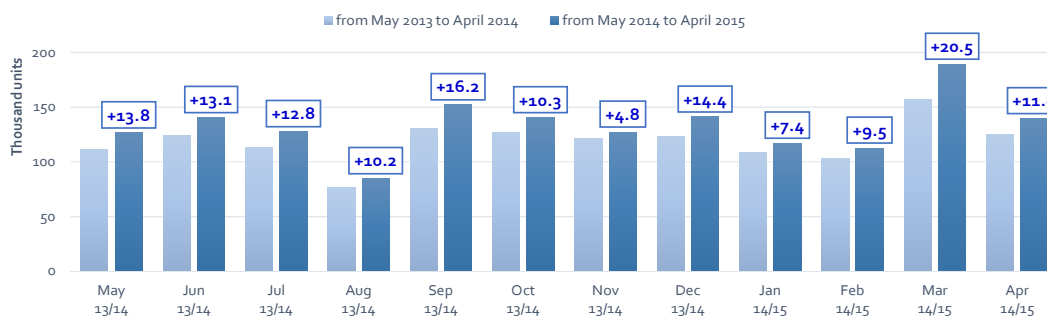
² Including Light Buses & Coaches

³ ANFIA estimates

⁴ Member States before the 2004 enlargement

⁵ Member States having joined the EU since 2004 (data for Malta unavailable)

New light commercial vehicle registrations in the EU - 12 months trend



For further information, please contact: Ms Francesca Piazza - Statistics & Communications Advisor - E-mail: fp@acea.be - Tel. (32) 2 738 73 55

This information is available on the ACEA website: <http://www.acea.be>
Next Press Release on Commercial Vehicles to be issued on Friday 26 June 2015

P R E S S R E L E A S E

PRESS EMBARGO FOR ALL DATA :

8.00 AM (6.00 AM GMT), 27 May 2015

PROVISIONAL

EU¹+EFTA COUNTRIES NEW REGISTRATION FIGURES BY MARKET NEW HEAVY COMMERCIAL VEHICLES of 16t and over²

27/05/15

	April '15	April '14	% Change	Jan-Apr '15	Jan-Apr '14	% Change
AUSTRIA	700	692	1.2%	2,511	2,381	5.5%
BELGIUM	537	560	-4.1%	2,385	2,579	-7.5%
BULGARIA	n.a	n.a	n.a	n.a	n.a	n.a
CROATIA	55	91	-39.6%	243	282	-13.8%
CYPRUS	0	0	n.a	0	4	-100.0%
CZECH REPUBLIC ³	769	632	21.7%	2,752	2,475	11.2%
DENMARK	396	279	41.9%	1,434	889	61.3%
ESTONIA	55	45	22.2%	272	328	-17.1%
FINLAND	192	145	32.4%	647	681	-5.0%
FRANCE	3,301	2,659	24.1%	11,942	11,908	0.3%
GERMANY	5,463	5,566	-1.9%	20,305	19,853	2.3%
GREECE	18	16	12.5%	72	43	67.4%
HUNGARY	318	314	1.3%	1,727	1,183	46.0%
IRELAND ⁴	141	138	2.2%	621	730	-14.9%
ITALY ⁵	798	767	4.0%	3,889	3,469	12.1%
LATVIA	149	72	106.9%	428	491	-12.8%
LITHUANIA ⁴	267	166	60.8%	995	815	22.1%
LUXEMBURG ⁴	105	93	12.9%	349	331	5.4%
NETHERLANDS	1,104	784	40.8%	4,760	2,313	105.8%
POLAND	1,615	1,226	31.7%	5,713	4,772	19.7%
PORTUGAL	197	139	41.7%	900	663	35.7%
ROMANIA	428	228	87.7%	1,558	1,078	44.5%
SLOVAKIA	341	231	47.6%	1,407	984	43.0%
SLOVENIA ⁴	146	129	13.2%	566	459	23.3%
SPAIN	1,211	874	38.6%	5,098	4,025	26.7%
SWEDEN	493	461	6.9%	1,523	1,549	-1.7%
UNITED KINGDOM	2,744	1,531	79.2%	9,942	5,827	70.6%
EUROPEAN UNION¹	21,543	17,838	20.8%	82,039	70,112	17.0%
EU15	17,400	14,704	18.3%	66,378	57,241	16.0%
EU12 ¹	4,143	3,134	32.2%	15,661	12,871	21.7%
ICELAND	8	4	100.0%	32	26	23.1%
NORWAY ⁴	363	398	-8.8%	1,326	1,400	-5.3%
SWITZERLAND ³	192	205	-6.3%	718	811	-11.5%
EFTA	563	607	-7.2%	2,076	2,237	-7.2%
EU+EFTA	22,106	18,445	19.8%	84,115	72,349	16.3%
WESTERN EUROPE (EU15+EFTA)	17,963	15,311	17.3%	68,454	59,478	15.1%

SOURCE: NATIONAL AUTOMOBILE MANUFACTURERS' ASSOCIATIONS

¹ Data for Malta unavailable

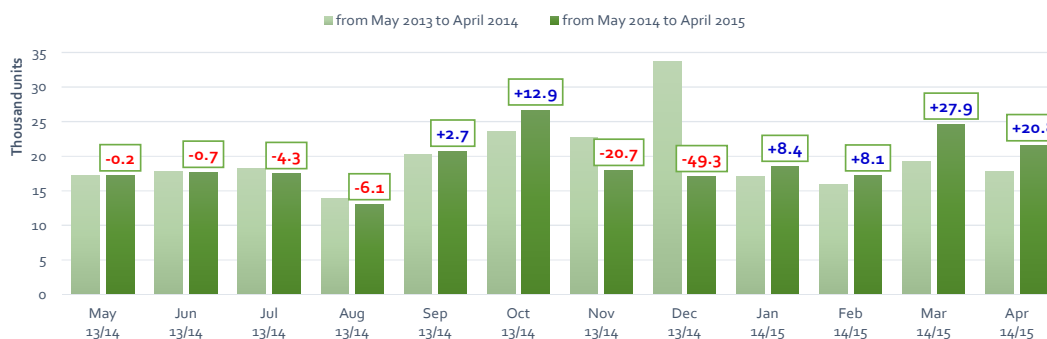
⁴ AAA estimates

² Excluding Heavy Buses & Coaches

⁵ ANFIA estimates based on vehicle registration certificates issued by the Italian Ministry of Transport

³ Heavy Commercial Vehicles of 18t and over

New heavy commercial vehicle registrations in the EU - 12 months trend



For further information, please contact: Ms Francesca Piazza - Statistics & Communications Advisor - E-mail: fp@acea.be - Tel. (32) 2 738 73 55

This information is available on the ACEA website: <http://www.acea.be>

P R E S S R E L E A S E

PRESS EMBARGO FOR ALL DATA :

8.00 AM (6.00 AM GMT), 27 May 2015

PROVISIONAL

EU¹+EFTA COUNTRIES NEW REGISTRATION FIGURES BY MARKET NEW MEDIUM & HEAVY COMMERCIAL VEHICLES over 3.5t²

27/05/15

	April '15	April '14	% Change	Jan-Apr '15	Jan-Apr '14	% Change
AUSTRIA	748	742	0.8%	2,687	2,532	6.1%
BELGIUM	698	674	3.6%	2,937	3,129	-6.1%
BULGARIA	n.a.	n.a.	n.a.	n.a.	n.a.	n.a.
CROATIA	76	110	-30.9%	319	328	-2.7%
CYPRUS	4	0	n.a.	18	7	157.1%
CZECH REPUBLIC	926	780	18.7%	3,312	3,044	8.8%
DENMARK	447	297	50.5%	1,593	981	62.4%
ESTONIA	62	51	21.6%	292	349	-16.3%
FINLAND	249	193	29.0%	839	870	-3.6%
FRANCE	3,908	3,363	16.2%	13,992	14,392	-2.8%
GERMANY	7,676	7,979	-3.8%	28,151	28,666	-1.8%
GREECE	26	26	0.0%	123	89	38.2%
HUNGARY	364	372	-2.2%	1,848	1,361	35.8%
IRELAND	205	171	19.9%	772	885	-12.8%
ITALY ³	1,078	1,074	0.4%	4,965	4,522	9.8%
LATVIA	161	85	89.4%	454	516	-12.0%
LITHUANIA ⁴	271	187	44.9%	1,012	866	16.9%
LUXEMBURG	105	100	5.0%	364	370	-1.6%
NETHERLANDS	1,208	892	35.4%	5,252	2,654	97.9%
POLAND	1,803	1,385	30.2%	6,336	5,457	16.1%
PORTUGAL	257	197	30.5%	1,090	865	26.0%
ROMANIA	451	255	76.9%	1,632	1,174	39.0%
SLOVAKIA	378	263	43.7%	1,522	1,137	33.9%
SLOVENIA ⁴	155	143	8.4%	620	508	22.0%
SPAIN	1,459	1,161	25.7%	6,035	4,895	23.3%
SWEDEN	556	498	11.6%	1,713	1,729	-0.9%
UNITED KINGDOM	3,612	2,371	52.3%	13,229	8,999	47.0%
EUROPEAN UNION¹	26,883	23,369	15.0%	101,107	90,325	11.9%
EU15	22,232	19,738	12.6%	83,742	75,578	10.8%
EU12 ¹	4,651	3,631	28.1%	17,365	14,747	17.8%
ICELAND	17	6	183.3%	59	36	63.9%
NORWAY	483	545	-11.4%	1,683	1,888	-10.9%
SWITZERLAND	368	389	-5.4%	1,312	1,404	-6.6%
EFTA	868	940	-7.7%	3,054	3,328	-8.2%
EU+EFTA	27,751	24,309	14.2%	104,161	93,653	11.2%
WESTERN EUROPE (EU15+EFTA)	23,100	20,678	11.7%	86,796	78,906	10.0%

SOURCE: NATIONAL AUTOMOBILE MANUFACTURERS' ASSOCIATIONS

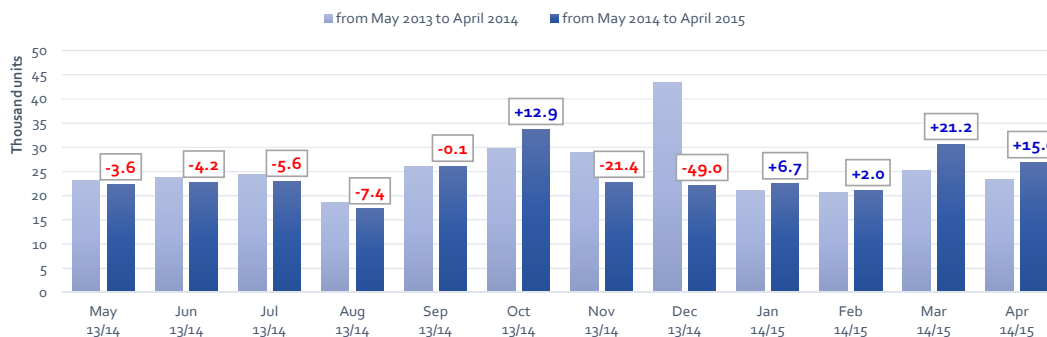
¹ Data for Malta unavailable

³ ANFIA estimates based on vehicle registration certificates issued by the Italian Ministry of Transport

² Excluding total Buses & Coaches over 3.5t

⁴ AAA estimates

New medium & heavy commercial vehicle registrations in the EU - 12 months trend



P R E S S R E L E A S E

PRESS EMBARGO FOR ALL DATA :

8.00 AM (6.00 AM GMT), 27 May 2015

PROVISIONAL

EU¹+EFTA COUNTRIES NEW REGISTRATION FIGURES BY MARKET NEW MEDIUM & HEAVY BUSES & COACHES over 3.5t

27/05/15

	April '15	April '14	% Change	Jan-Apr '15	Jan-Apr '14	% Change
AUSTRIA	98	133	-26.3%	341	293	16.4%
BELGIUM	148	63	134.9%	410	267	53.6%
BULGARIA	n.a.	n.a.	n.a.	n.a.	n.a.	n.a.
CROATIA	28	15	86.7%	59	35	68.6%
CYPRUS	n.a.	n.a.	n.a.	n.a.	n.a.	n.a.
CZECH REPUBLIC	131	63	107.9%	366	338	8.3%
DENMARK	14	23	-39.1%	89	80	11.3%
ESTONIA	22	3	633.3%	87	60	45.0%
FINLAND	27	41	-34.1%	127	109	16.5%
FRANCE	491	407	20.6%	1,938	1,768	9.6%
GERMANY	544	528	3.0%	1,830	1,719	6.5%
GREECE	15	14	7.1%	38	46	-17.4%
HUNGARY	43	125	-65.6%	116	153	-24.2%
IRELAND	29	18	61.1%	136	95	43.2%
ITALY ²	275	150	83.3%	1,017	799	27.3%
LATVIA	41	14	192.9%	105	53	98.1%
LITHUANIA ³	6	26	-76.9%	58	69	-15.9%
LUXEMBURG	23	18	27.8%	119	85	40.0%
NETHERLANDS	58	139	-58.3%	161	264	-39.0%
POLAND	173	174	-0.6%	560	471	18.9%
PORTUGAL	17	15	13.3%	133	116	14.7%
ROMANIA	89	107	-16.8%	277	249	11.2%
SLOVAKIA	23	19	21.1%	102	182	-44.0%
SLOVENIA ³	7	23	-69.6%	39	56	-30.4%
SPAIN	213	166	28.3%	939	539	74.2%
SWEDEN	65	12	441.7%	262	75	249.3%
UNITED KINGDOM	685	800	-14.4%	2,866	2,477	15.7%
EUROPEAN UNION¹	3,265	3,096	5.5%	12,175	10,398	17.1%
EU15	2,702	2,527	6.9%	10,406	8,732	19.2%
EU12¹	563	569	-1.1%	1,769	1,666	6.2%
ICELAND	9	9	0.0%	30	25	20.0%
NORWAY	32	42	-23.8%	196	191	2.6%
SWITZERLAND	60	65	-7.7%	183	188	-2.7%
EFTA	101	116	-12.9%	409	404	1.2%
EU+EFTA	3,366	3,212	4.8%	12,584	10,802	16.5%
WESTERN EUROPE (EU15+EFTA)	2,803	2,643	6.1%	10,815	9,136	18.4%

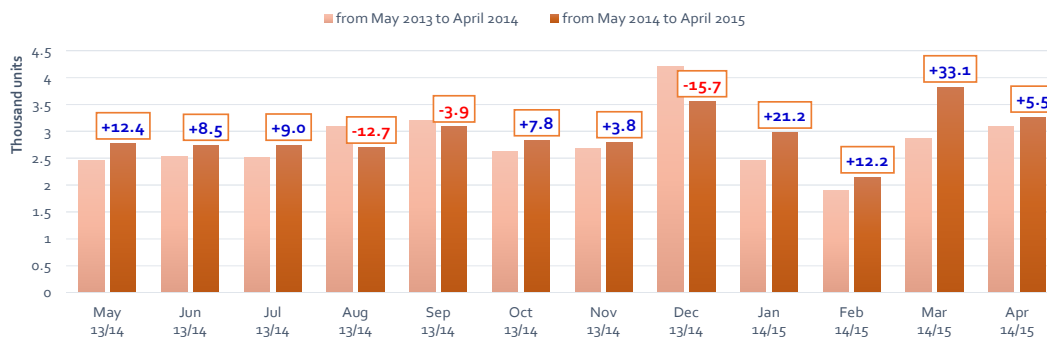
SOURCE: NATIONAL AUTOMOBILE MANUFACTURERS' ASSOCIATIONS

¹ Data for Malta unavailable

² ANFIA estimates based on vehicle registration certificates issued by the Italian Ministry of Transport

³ AAA estimates

New bus & coach registrations in the EU - 12 months trend



For further information, please contact: Ms Francesca Piazza - Statistics & Communications Advisor - E-mail: fp@acea.be - Tel. (32) 2 738 73 55

This information is available on the ACEA website: <http://www.acea.be>

P R E S S R E L E A S E

PRESS EMBARGO FOR ALL DATA :

8.00 AM (6.00 AM GMT), 27 May 2015

PROVISIONAL EU¹+EFTA COUNTRIES NEW REGISTRATION FIGURES BY MARKET TOTAL NEW COMMERCIAL VEHICLES²

27/05/15

	April '15	April '14	% Change	Jan-Apr '15	Jan-Apr '14	% Change
AUSTRIA	3,988	3,869	3.1%	13,488	13,068	3.2%
BELGIUM	7,103	5,975	18.9%	26,514	24,057	10.2%
BULGARIA ³	320	352	-9.1%	1,436	1,270	13.1%
CROATIA	712	711	0.1%	2,432	2,592	-6.2%
CYPRUS ⁴	100	83	20.5%	356	316	12.7%
CZECH REPUBLIC	2,474	1,985	24.6%	9,156	7,330	24.9%
DENMARK	3,129	2,475	26.4%	11,951	9,693	23.3%
ESTONIA	406	301	34.9%	1,663	1,368	21.6%
FINLAND	1,237	1,119	10.5%	4,872	4,566	6.7%
FRANCE	37,486	36,970	1.4%	139,967	139,948	0.0%
GERMANY	28,422	26,554	7.0%	103,259	96,448	7.1%
GREECE	609	409	48.9%	2,641	1,599	65.2%
HUNGARY	1,742	1,748	-0.3%	7,466	5,855	27.5%
IRELAND	2,311	1,505	53.6%	13,045	8,595	51.8%
ITALY ⁵	11,853	10,879	9.0%	46,402	43,120	7.6%
LATVIA	416	261	59.4%	1,308	1,332	-1.8%
LITHUANIA	432	390	10.8%	1,803	1,612	11.8%
LUXEMBURG	439	468	-6.2%	1,703	1,656	2.8%
NETHERLANDS	5,881	5,257	11.9%	26,538	22,792	16.4%
POLAND	6,004	4,850	23.8%	22,810	19,670	16.0%
PORTUGAL	2,672	2,264	18.0%	10,310	8,777	17.5%
ROMANIA	1,346	1,125	19.6%	5,030	4,202	19.7%
SLOVAKIA	1,049	727	44.3%	3,722	2,934	26.9%
SLOVENIA	790	846	-6.6%	2,988	3,252	-8.1%
SPAIN	14,605	12,323	18.5%	55,613	41,135	35.2%
SWEDEN	4,996	4,096	22.0%	16,431	15,368	6.9%
UNITED KINGDOM	29,224	23,791	22.8%	138,797	112,013	23.9%
EUROPEAN UNION¹	169,746	151,333	12.2%	671,701	594,568	13.0%
EU15	153,955	137,954	11.6%	611,531	542,835	12.7%
EU12 ¹	15,791	13,379	18.0%	60,170	51,733	16.3%
ICELAND	165	85	94.1%	506	334	51.5%
NORWAY	3,402	3,161	7.6%	12,372	11,525	7.3%
SWITZERLAND	3,012	3,170	-5.0%	11,776	11,375	3.5%
EFTA	6,579	6,416	2.5%	24,654	23,234	6.1%
EU+EFTA	176,325	157,749	11.8%	696,355	617,802	12.7%
WESTERN EUROPE (EU15+EFTA)	160,534	144,370	11.2%	636,185	566,069	12.4%

SOURCE: NATIONAL AUTOMOBILE MANUFACTURERS' ASSOCIATIONS

¹ Data for Malta unavailable

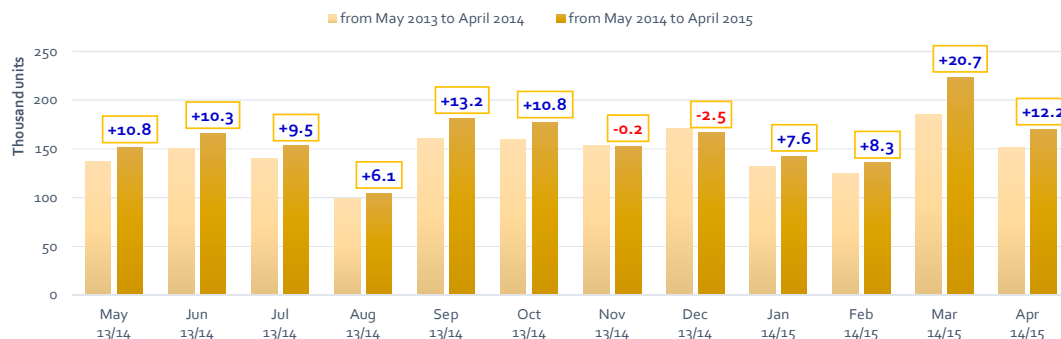
⁴ Data for Buses & Coaches unavailable

² Total Light, Medium & Heavy Commercial Vehicles and Buses & Coaches

⁵ ANFIA estimates based on vehicle registration certificates issued by the Italian Ministry of Transport

³ Data for Medium & Heavy Commercial Vehicles and Buses & Coaches unavailable

Total new commercial vehicle registrations in the EU - 12 months trend



For further information, please contact: Ms Francesca Piazza - Statistics & Communications Advisor - E-mail: fp@acea.be - Tel. (32) 2 738 73 55

 This information is available on the ACEA website: <http://www.acea.be>