



OTOMOTİV SANAYİİ DERNEĞİ
AUTOMOTIVE MANUFACTURERS ASSOCIATION

AYLIK RAPOR

Automotive Industry Monthly Report

Haziran / June 2015

- **Üretim**/Production
- **Satış**/Sales
- **İthalat**/Imports
- **İhracat**/Exports

OSD "OICA" Üyesidir



OSD is a Member of "OICA"



2015 Haziran Ayı Özeti / 2015 June Summary

KONULAR / MATTERS		HAZİRAN / JUNE			6 AY / 6 MONTHS			SON 12 AYLIK / YoY		
		2014	2015	2015/2014 (%)	2014	2015	2015/2014 (%)	2014	2015	2015/2014 (%)
Üretim / Production	Toplam / Total	108.101	124.451	15	564.077	667.592	18	1.120.264	1.273.960	14
	Otomobil / P.Cars	67.013	73.928	10	360.891	391.977	9	690.712	764.525	11
Pazar / Market	Toplam / Total	63.952	90.462	41	305.124	455.269	49	797.282	957.631	20
	Otomobil / P.Cars	47.278	67.766	43	225.773	327.846	45	598.322	689.404	15
İthalat / Import	Toplam / Total	41.971	60.084	43	204.426	294.412	44	544.418	612.828	13
	Otomobil / P.Cars	34.819	50.835	46	168.849	244.207	45	457.956	505.340	10
İhracat / Export	Toplam / Total	84.728	92.680	9	452.335	486.336	8	859.949	919.181	7
	Otomobil / P.Cars	54.886	56.556	3	299.535	303.857	1	551.007	586.315	6
İhracat / Export (\$)	Toplam / Total **	2.074.928.229	2.013.718.973	-3	11.924.880.249	10.705.510.954	-10	22.849.815.875	21.554.869.239	-6
	Otomobil / P.Cars	681.416.860	694.531.468	2	3.878.969.028	3.553.680.484	-8	7.230.966.325	6.923.857.509	-4

PARAMETRELER / PARAMETERS		HAZİRAN / JUNE			6 AY / 6 MONTHS			SON 12 AYLIK / YoY		
		2014	2015	2015/2014 (%)	2014	2015	2015/2014 (%)	2014	2015	2015/2014 (%)
ÜFE / PPI		0,06	0,25	**	5,12	5,49	**	9,75	6,73	**
TÜFE / CPI		0,31	-0,51	**	5,70	4,76	**	9,16	7,20	**
Sanayi Endeksi / Industry Index		0,13	0,41	**	6,41	6,17	**	12,29	7,39	**
\$ (*)		2,1264	2,6831	26	2,1643	2,5879	20	2,0925	2,4030	15
EURO (*)		2,9032	2,9961	3	2,9642	2,8723	-3	2,8477	2,8454	0
Japon Yeni (*)		2,1025	2,1812	4	2,1209	2,1381	1	2,0659	2,0644	0

(*) Ortalama Değerler / Average Values

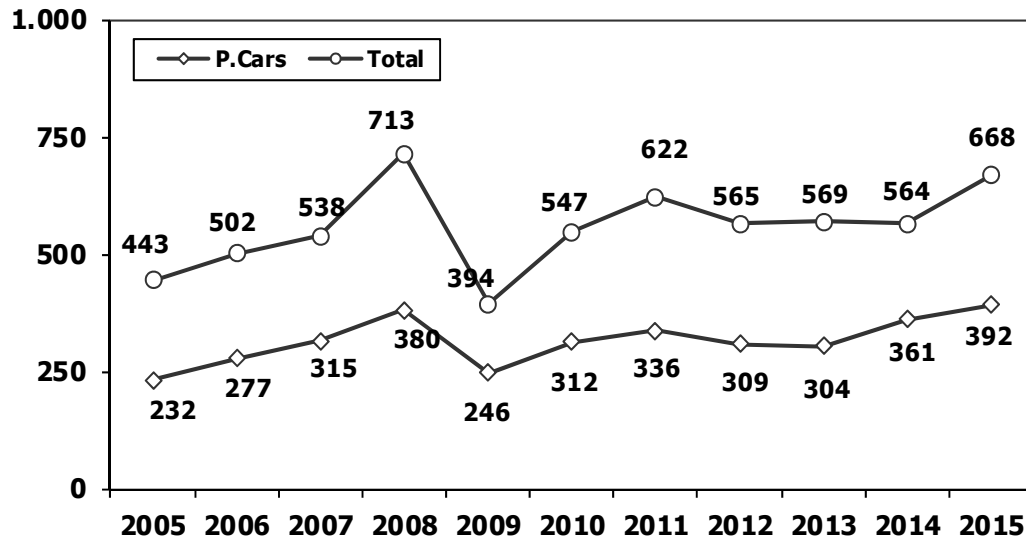
(**) Toplam Sanayi / Total Industry Including Components

2014/2015 Yılları Üretim 2014/2015 Production

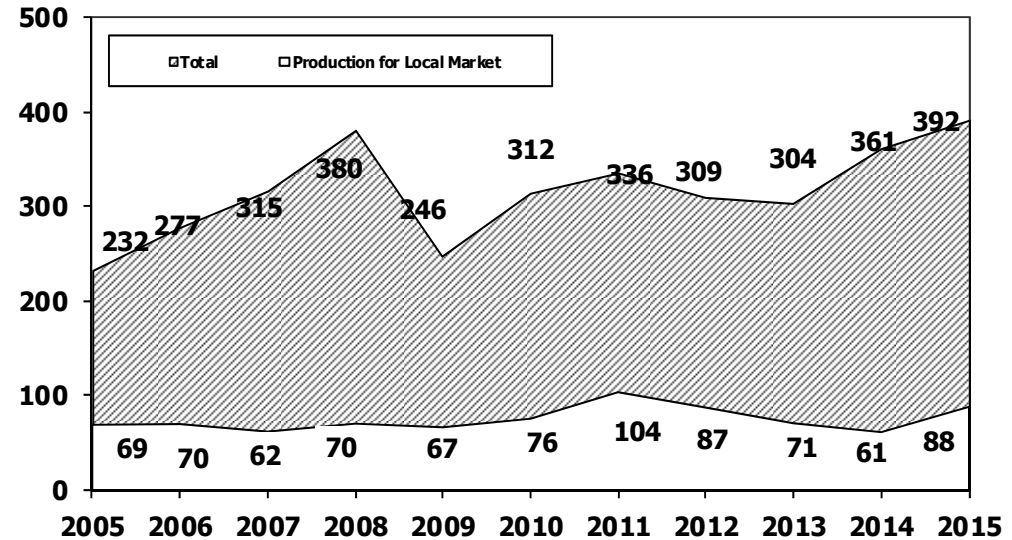
K.KAMYON : AYA 3.5-12 Ton (L.Truck:GVW 3.5-12 Ton)
B.KAMYON : AYA 12 Ton'dan Büyük (M.Truck:GVW 12 Ton And Up)

TİPLER	HAZİRANAYI ÜRETİMİ June Production		6 AYLIK ÜRETİM 6 Months Production		DEĞİŞİM % Percent Change %	
	2014	2015	2014	2015	HAZİRAN June	6 AY 6 Months
OTOMOBİL - Pass.Car	67.013	73.928	360.891	391.977	10	9
TİCARİ ARAÇLAR - Commercial Vehicles	41.088	50.523	203.186	275.615	23	36
* B. KAMYON - M. Truck	2.699	2.949	13.549	16.350	9	21
* K. KAMYON - L. Truck	266	420	1.658	1.961	**	18
* KAMYONET - Pick Up	34.087	42.114	166.189	217.211	24	31
* OTOBÜS - Bus	534	790	3.364	4.243	48	26
* MİNİBÜS - Minibus	3.006	3.650	15.266	32.611	21	114
* MİDİBÜS - Midibus	496	600	3.160	3.239	21	3
TAŞIT ARAÇLARI TOPLAM - MV Total	108.101	124.451	564.077	667.592	15	18
TRAKTÖR - F.Tractor	4.426	4.356	24.676	24.315	-2	-1
GENEL TOPLAM - Grand Total	112.527	128.807	588.753	691.907	14	18

Toplam Üretim ve Otomobil Üretimi (x1000) (Ocak-Haziran)
Total & P.Cars Production (x1000) (January- June)

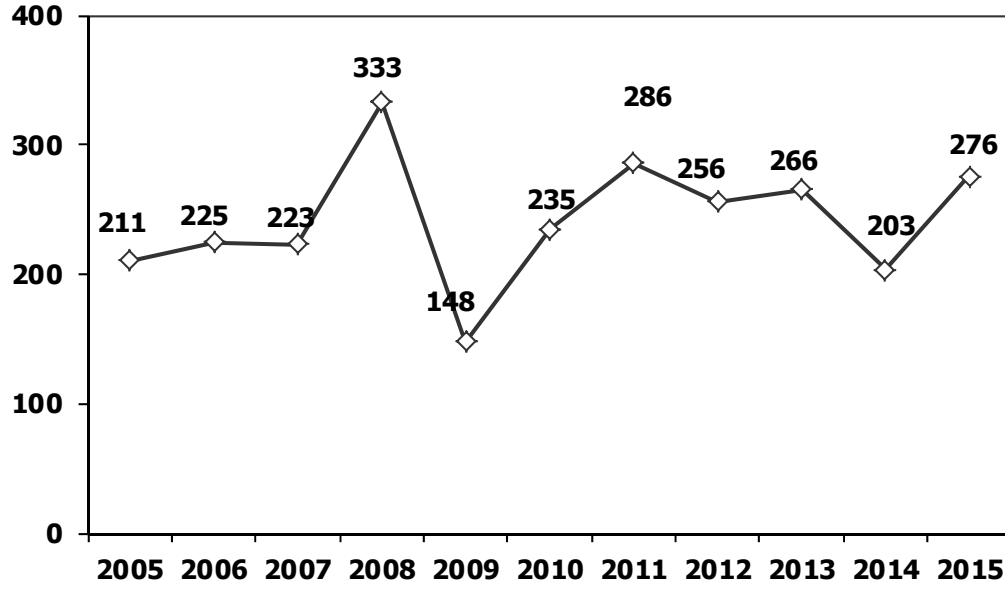


Otomobil Üretimi ve İhracat (x1000) (Ocak-Haziran)
P.Cars Production & Exports (x1000) (January- June)

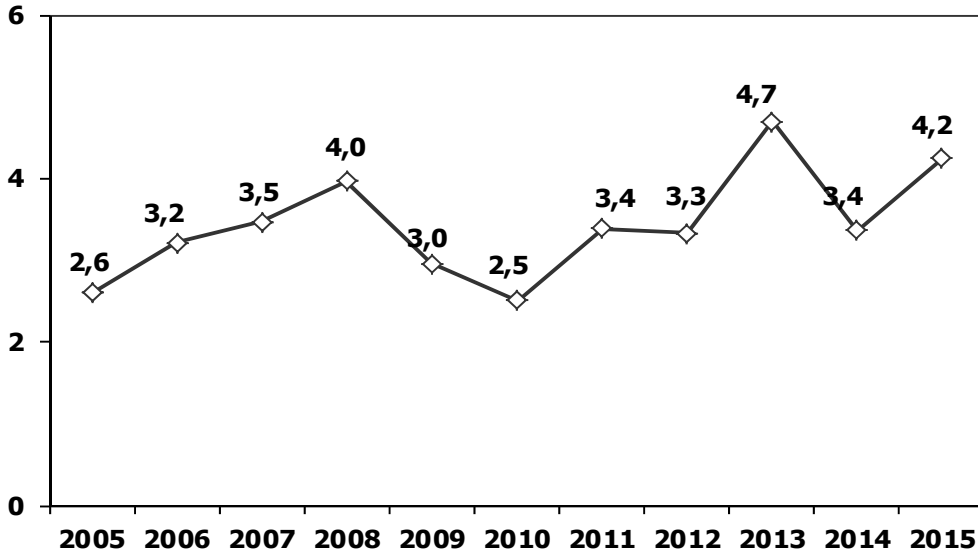




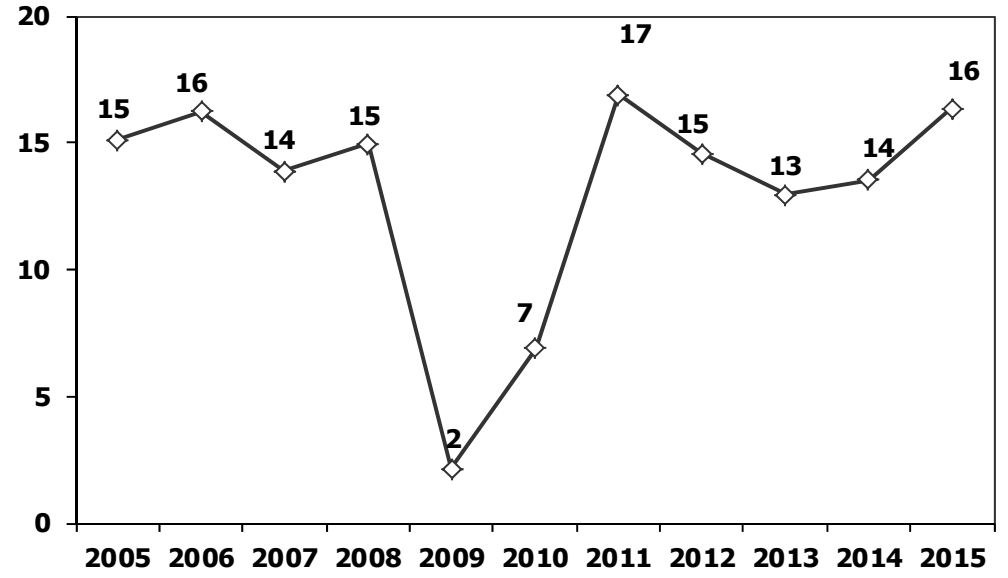
Ticari Araç Üretimi (x1000) (Ocak-Haziran)
Commercial Vehicle Production (x1000) (January- June)



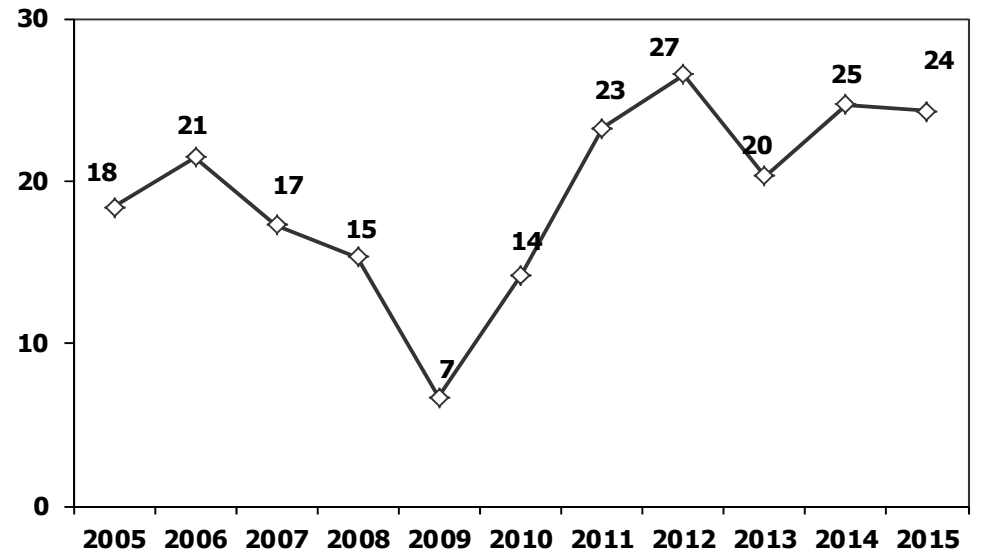
Otobüs Üretimi (x1000) (Ocak-Haziran)
Bus Production (x1000) (January- June)



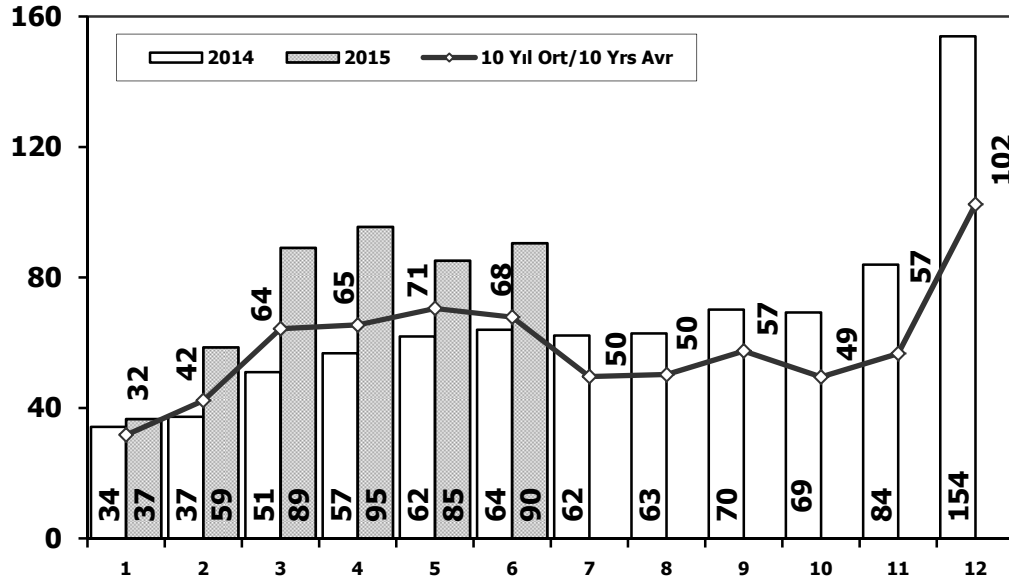
(AYA >12 Ton) **Büyük Kamyon Üretimi** (x1000) (Ocak-Haziran)
(GVW >12 Ton) Heavy Truck Production (x1000) (January- June)



Traktör Üretimi (x1000) (Ocak-Haziran)
F. Tractor Production (x1000) (January- June)

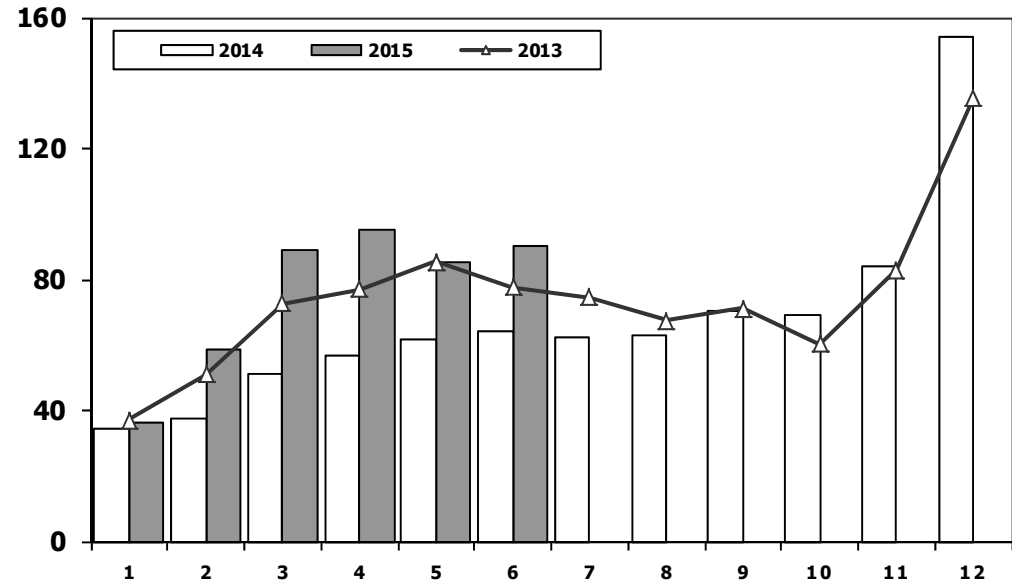


Toplam Pazarın Analizi (x1000) Total Market Analysis (x1000)



Aylar / Months	10 Yil Ort. 10 Yrs Avr. (x1000)	2015 (x1000)	%
1	31,7	36,6	15,3
2	42,3	58,5	38,5
3	64,3	89,1	38,6
4	65,4	95,5	45,9
5	70,5	85,1	20,8
6	67,9	90,5	33,3
Total	342,1	455,3	33,1

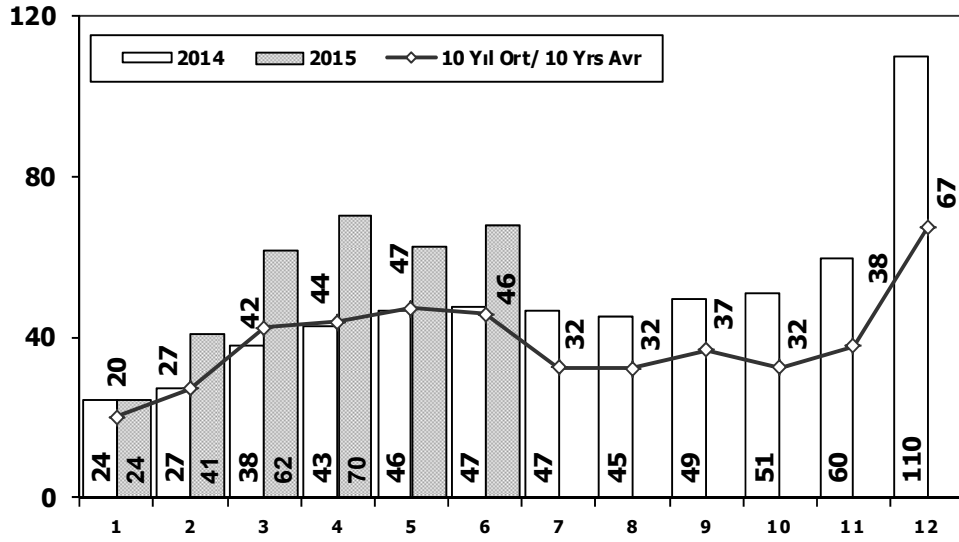
Toplam Pazar (x1000) Total Market (x1000)



	1	2	3	4	5	6	7	8	9	10	11	12	6 Ay/Mo	Total
2005	22.687	38.291	64.502	60.873	71.383	64.379	63.847	68.647	66.580	60.791	65.719	110.838	322.115	758.537
2006	29.969	44.646	65.090	68.853	83.289	58.203	40.037	47.374	49.629	39.805	55.898	82.722	350.050	665.515
2007	24.950	31.702	45.488	45.633	51.255	51.661	50.117	54.171	50.078	56.058	67.017	106.076	250.689	634.206
2008	33.792	38.121	56.814	50.967	51.627	49.393	44.692	46.592	46.829	35.147	28.152	44.418	280.714	526.544
2009	20.631	22.846	56.531	54.426	64.887	63.102	30.246	37.092	83.403	22.117	29.202	91.386	282.423	575.869
2010	21.050	32.313	53.828	57.079	61.628	63.390	63.718	64.645	66.601	76.780	77.406	154.734	289.288	793.172
2011	47.658	62.348	83.333	82.071	85.093	85.863	65.364	61.378	63.643	72.640	67.195	134.281	446.366	910.867
2012	31.219	43.827	68.957	66.014	74.820	74.781	65.122	60.848	73.197	62.677	75.045	121.113	359.618	817.620
2013	37.140	50.931	72.688	77.015	85.421	77.771	74.726	67.383	71.037	60.399	83.017	135.596	400.966	893.124
2014	34.225	37.308	50.964	56.766	61.909	63.952	62.206	62.839	70.180	69.259	83.937	153.941	305.124	807.486
2015	36.579	58.532	89.078	95.474	85.144	90.462	0	0	0	0	0	0	455.269	455.269

Otomobil Pazarının Analizi (x1000)

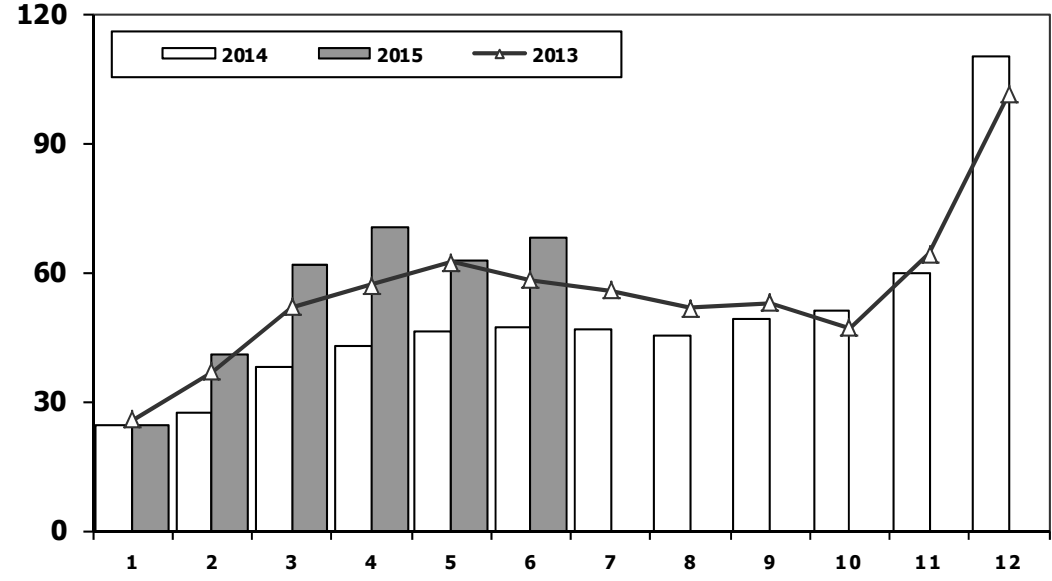
P.Cars Market Analysis (x1000)



Aylar / Months	10 Yil Ort. 10 Yrs Avr. (x1000)	2015 (x1000)	%
1	20,0	24,5	22,7
2	27,1	40,8	50,4
3	42,3	61,7	45,9
4	43,8	70,2	60,3
5	47,2	62,9	33,2
6	45,6	67,8	48,7
Total	226,0	327,8	45,1

Otomobil Pazarı (x1000)

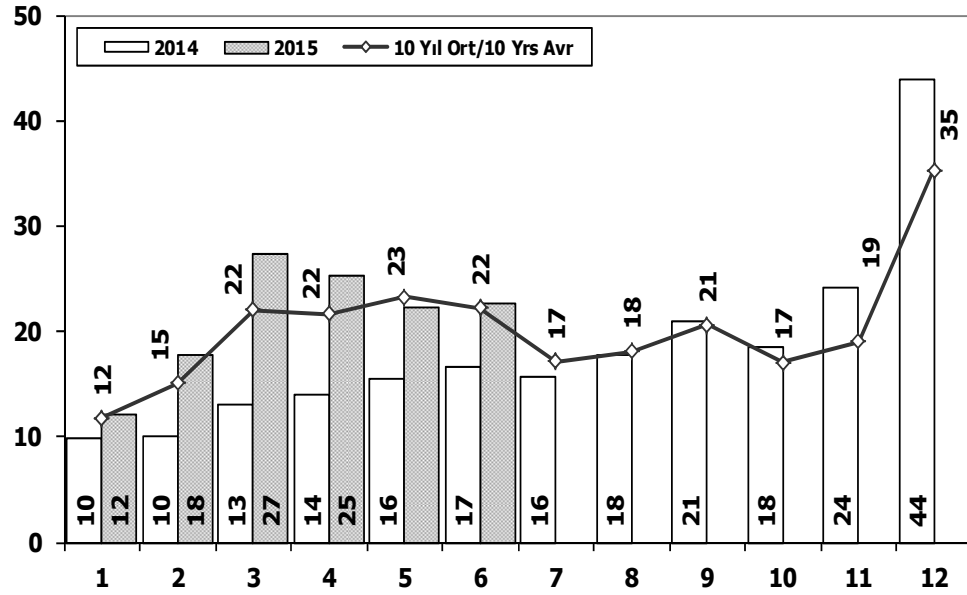
P.Cars Market (x1000)



	1	2	3	4	5	6	7	8	9	10	11	12	6 Ay/Mo	Total
2005	11.595	21.012	38.129	36.206	38.480	40.900	38.969	38.648	36.410	34.960	37.841	65.447	186.322	438.597
2006	16.506	24.929	36.996	40.177	48.521	32.982	22.653	24.873	27.517	21.237	30.477	46.351	200.111	373.219
2007	13.186	17.212	24.336	25.204	29.067	30.126	28.246	28.469	27.662	32.569	39.643	61.745	139.131	357.465
2008	18.588	21.196	34.147	30.313	31.477	28.724	25.530	26.102	27.053	19.788	17.201	25.879	164.445	305.998
2009	13.173	14.492	40.622	36.202	44.188	41.019	16.637	22.537	52.162	13.828	17.781	57.178	189.696	369.819
2010	12.594	20.651	33.958	36.549	40.467	42.086	41.399	42.222	42.477	47.859	50.061	99.461	186.305	509.784
2011	29.868	39.004	54.023	53.835	56.302	56.714	43.518	38.875	39.964	47.508	44.951	88.957	289.746	593.519
2012	21.077	29.189	47.270	45.645	50.460	50.849	44.531	41.236	49.360	43.440	52.297	80.926	244.490	556.280
2013	25.835	36.814	51.785	56.999	62.383	58.290	55.712	51.611	52.925	46.985	64.117	101.199	292.106	664.655
2014	24.368	27.167	37.812	42.769	46.379	47.278	46.602	45.131	49.262	50.814	59.695	110.054	225.773	587.331
2015	24.498	40.817	61.676	70.211	62.878	67.766	0	0	0	0	0	0	327.846	327.846

Ticari Araç Pazarının Analizi (x1000)

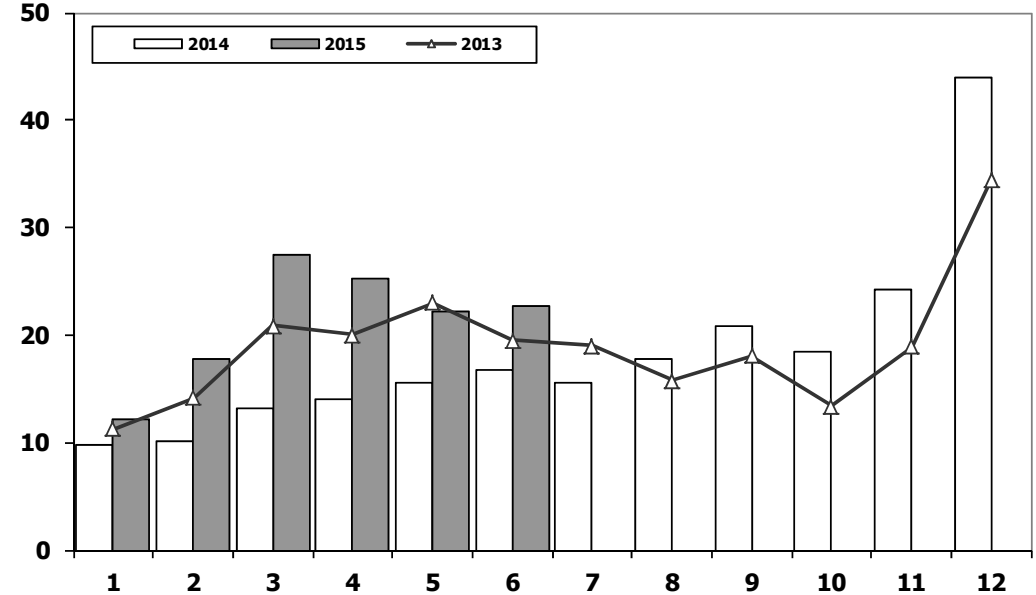
CV Market Analysis (x1000)



Aylar / Months	10 Yil Ort. 10 Yrs Avr. (x1000)	2015 (x1000)	%
1	11,8	12,1	2,8
2	15,1	17,7	17,2
3	22,0	27,4	24,5
4	21,6	25,3	16,7
5	23,3	22,3	-4,4
6	22,3	22,7	1,9
Total	116,1	127,4	9,8

Ticari Araç Pazarı (x1000)

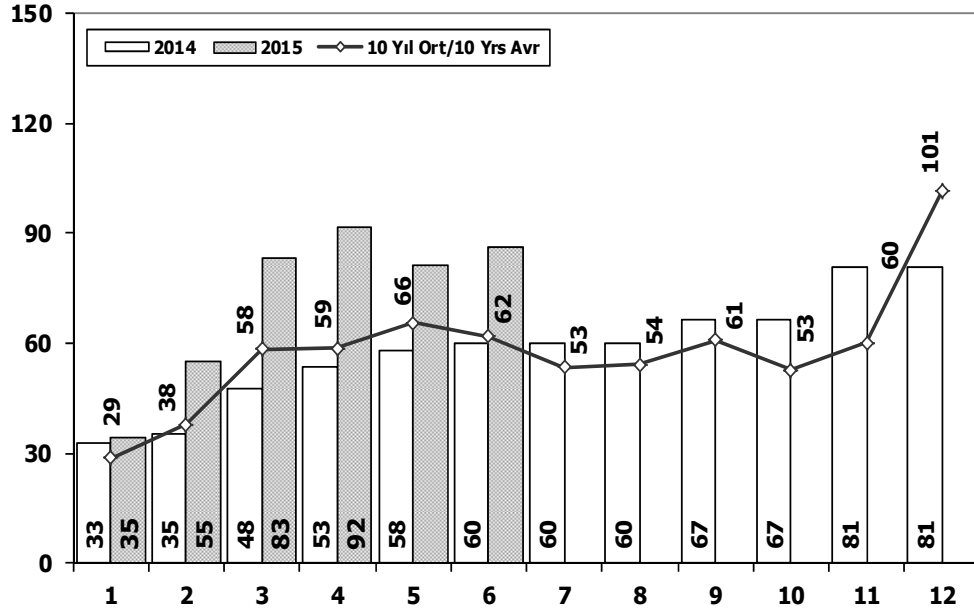
CV Total Market (Local + Imports) (x1000)



	1	2	3	4	5	6	7	8	9	10	11	12	6 Ay/Mo	Total
2005	11.092	17.279	26.373	24.667	32.903	23.479	24.878	29.999	30.170	25.831	27.878	45.391	135.793	319.940
2006	13.463	19.717	28.094	28.676	34.768	25.221	17.384	22.501	22.112	18.568	25.421	36.371	149.939	292.296
2007	11.764	14.490	21.152	20.429	22.188	21.535	21.871	25.702	22.416	23.489	27.374	44.331	111.558	276.741
2008	15.204	16.925	22.667	20.654	20.150	20.669	19.162	20.490	19.776	15.359	10.951	18.539	116.269	220.546
2009	7.458	8.354	15.909	18.224	20.699	22.083	13.609	14.555	31.241	8.289	11.421	34.208	92.727	206.050
2010	8.456	11.662	19.870	20.530	21.161	21.304	22.319	22.423	24.124	28.921	27.345	55.273	102.983	283.388
2011	17.790	23.344	29.310	28.236	28.791	29.149	21.846	22.503	23.679	25.132	22.244	45.324	156.620	317.348
2012	10.142	14.638	21.687	20.369	24.360	23.932	20.591	19.612	23.837	19.237	22.748	40.187	115.128	261.340
2013	11.305	14.117	20.903	20.016	23.038	19.481	19.014	15.772	18.112	13.414	18.900	34.397	108.860	228.469
2014	9.857	10.141	13.152	13.997	15.530	16.674	15.604	17.708	20.918	18.445	24.242	43.887	79.351	220.155
2015	12.081	17.715	27.402	25.263	22.266	22.696	0	0	0	0	0	0	127.423	127.423

Hafif Araç Pazarının Analizi (x1000)

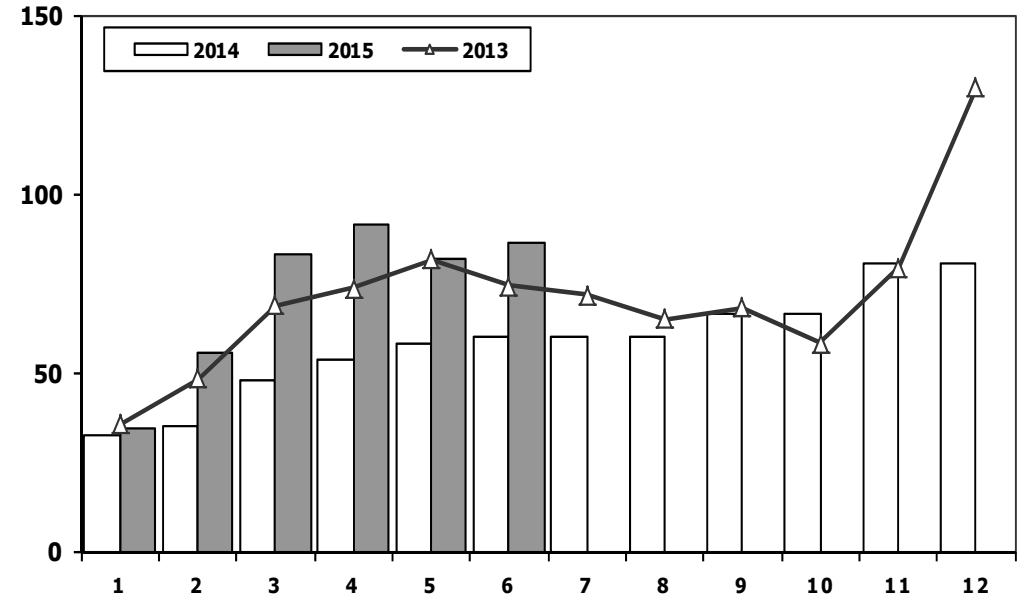
LV Market Analysis (x1000)



Aylar / Months	10 Yil Ort. 10 Yrs Avr. (x1000)	2015 (x1000)	%
1	28,6	34,6	21,2
2	37,7	55,3	46,6
3	58,3	83,3	42,9
4	58,6	91,6	56,3
5	65,6	81,5	24,3
6	61,9	86,2	39,2
Total	310,7	432,6	39,2

Hafif Araç Pazarı (x1000)

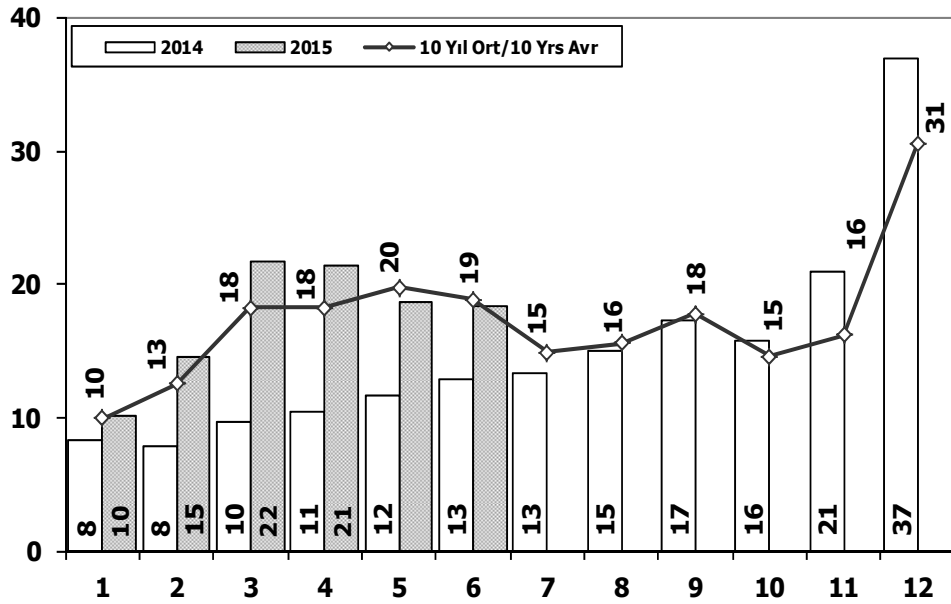
LV Total Market (Local + Imports) (x1000)



	1	2	3	4	5	6	7	8	9	10	11	12	6 Ay/Mo	Total
2005	20.747	35.766	60.707	56.844	67.357	60.796	61.015	64.011	61.954	56.638	61.364	103.209	302.217	710.408
2006	27.917	40.938	60.052	64.038	78.229	54.355	37.251	43.767	46.109	36.542	51.867	76.787	325.529	617.852
2007	23.117	29.184	41.890	42.366	47.938	48.674	47.490	50.558	46.581	52.725	63.313	100.926	233.169	594.762
2008	31.527	35.251	53.649	47.701	48.598	46.324	42.156	43.670	43.932	32.884	26.253	42.078	263.050	494.023
2009	19.606	21.742	55.111	52.640	63.191	61.067	28.845	35.609	81.397	21.033	27.962	88.923	273.357	557.126
2010	20.095	31.172	51.769	54.946	59.377	60.896	61.345	61.764	63.814	73.404	73.962	148.369	278.255	760.913
2011	44.892	58.663	78.403	77.695	80.646	81.573	63.044	58.406	60.129	69.421	63.657	127.910	421.872	864.439
2012	29.545	41.324	64.884	62.949	70.863	71.067	62.304	58.148	69.629	59.938	71.710	115.400	340.632	777.761
2013	35.523	48.307	68.774	73.575	81.468	74.096	71.596	65.043	67.963	58.014	79.301	129.718	381.743	853.378
2014	32.670	35.021	47.581	53.305	58.121	60.163	59.907	60.199	66.531	66.573	80.621	80.621	286.861	701.313
2015	34.615	55.331	83.302	91.602	81.542	86.158	0	0	0	0	0	0	432.550	432.550

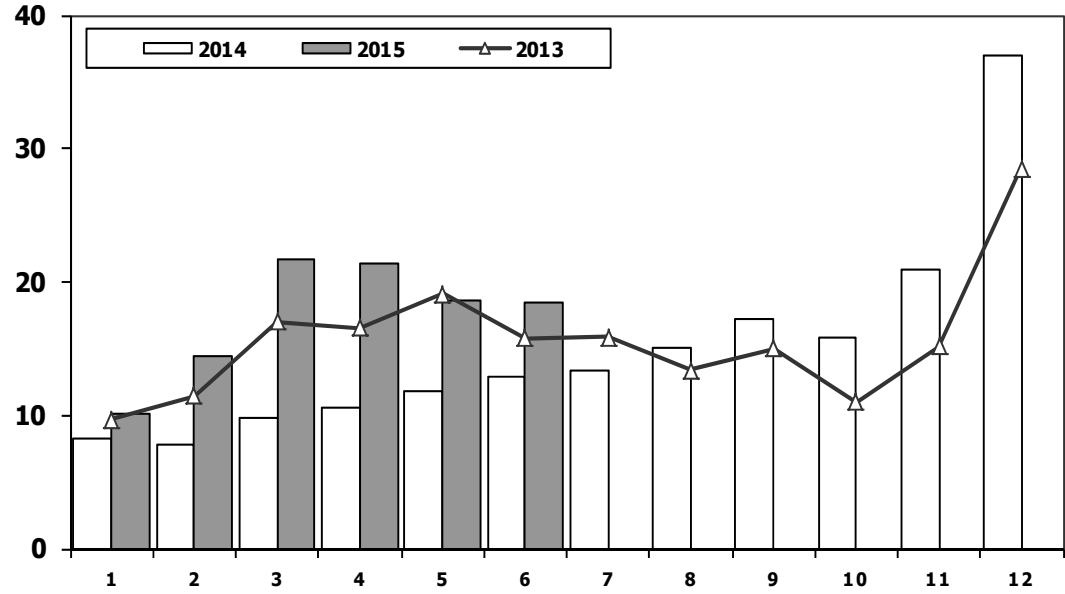
Hafif Ticari Araç Pazarının Analizi (x1000)

LCV Market Analysis (x1000)



Hafif Ticari Araç Pazarı (x1000)

LCV Total Market (Local + Imports) (x1000)

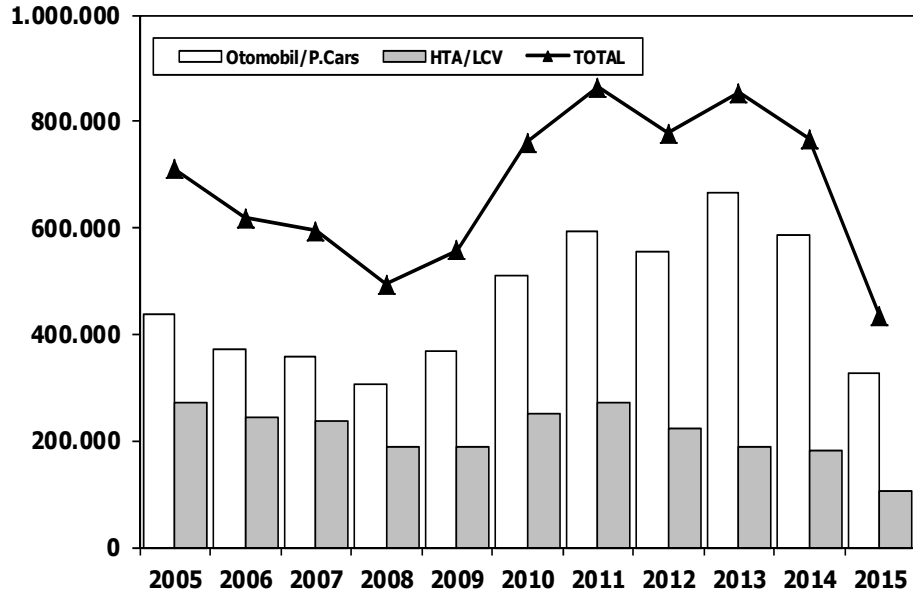


Aylar / Months	10 Yil Ort. 10 Yrs Avr. (x1000)	2015 (x1000)	%
1	10,0	10,1	1,4
2	12,5	14,5	15,7
3	18,3	21,6	18,3
4	18,3	21,4	16,9
5	19,8	18,7	-5,7
6	18,9	18,4	-2,4
Total	97,7	104,7	7,1

	1	2	3	4	5	6	7	8	9	10	11	12	6 Ay/Mo	Total
2005	9.152	14.754	22.578	20.638	28.877	19.896	22.046	25.363	25.544	21.678	23.523	37.762	115.895	271.811
2006	11.411	16.009	23.056	23.861	29.708	21.373	14.598	18.894	18.592	15.305	21.390	30.436	125.418	244.633
2007	9.931	11.972	17.554	17.162	18.871	18.548	19.244	22.089	18.919	20.156	23.670	39.181	94.038	237.297
2008	12.939	14.055	19.502	17.388	17.121	17.600	16.626	17.568	16.879	13.096	9.052	16.199	98.605	188.025
2009	6.433	7.250	14.489	16.438	19.003	20.048	12.208	13.072	29.235	7.205	10.181	31.745	83.661	187.307
2010	7.501	10.521	17.811	18.397	18.910	18.810	19.946	19.542	21.337	25.545	23.901	48.908	91.950	251.129
2011	15.024	19.659	24.380	23.860	24.344	24.859	19.526	19.531	20.165	21.913	18.706	38.953	132.126	270.920
2012	8.468	12.135	17.614	17.304	20.403	20.218	17.773	16.912	20.269	16.498	19.413	34.474	96.142	221.481
2013	9.688	11.493	16.989	16.576	19.085	15.806	15.884	13.432	15.038	11.029	15.184	28.519	89.637	188.723
2014	8.302	7.854	9.769	10.536	11.742	12.885	13.305	15.068	17.269	15.759	20.926	36.935	61.088	180.350
2015	10.117	14.514	21.626	21.391	18.664	18.392	0	0	0	0	0	0	104.704	104.704

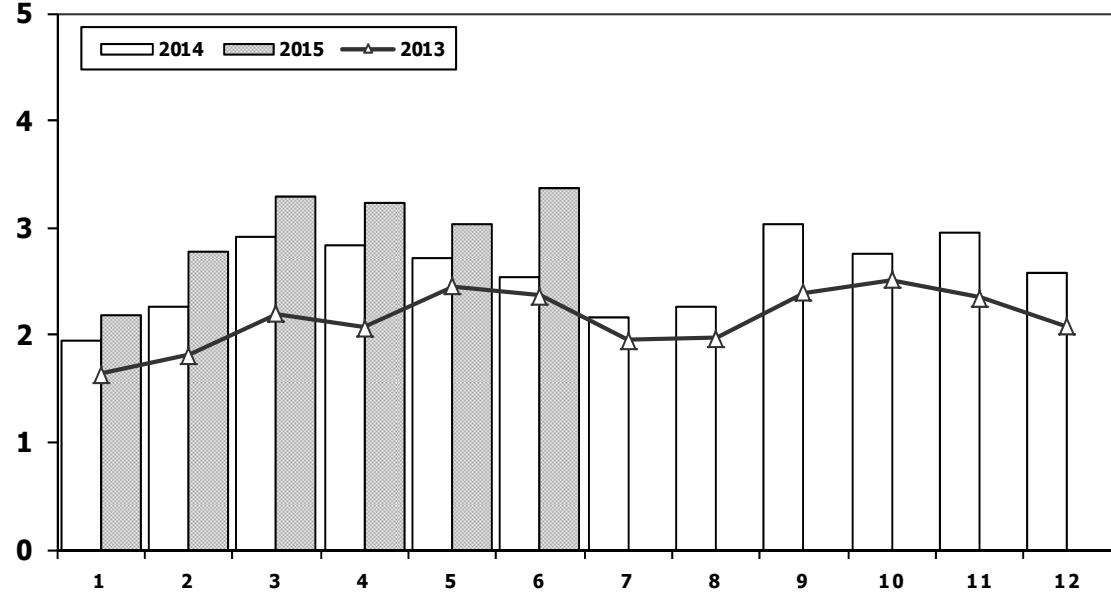


Hafif Arac Pazarı (AYA < 3.5 Ton)
Light Vehicle Market (GVW < 3.5 Ton)



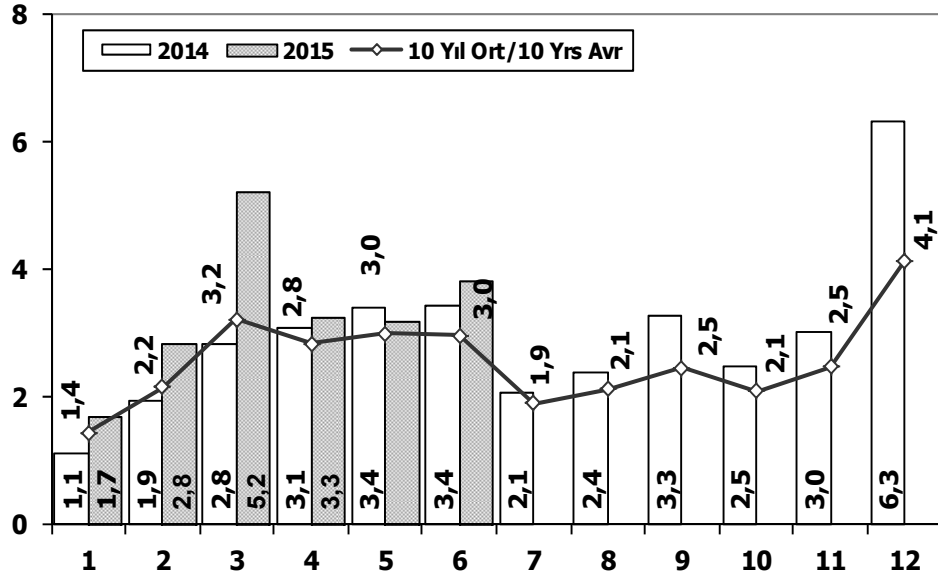
	2005	2006	2007	2008	2009	2010	2011	2012	2013	2014	2015
Otomobil/P.Cars	438.597	373.219	357.465	305.998	369.819	509.784	593.519	556.280	664.655	587.331	327.846
HTA/LCV	271.811	244.633	237.297	188.025	187.307	251.129	270.920	221.481	188.723	180.350	104.704
TOTAL	710.408	617.852	594.762	494.023	557.126	760.913	864.439	777.761	853.378	767.681	432.550
HTA/LCV (%)	38	40	40	38	34	33	31	28	22	23	24

Traktör Pazarı (x1000)
F.Tractor Market (x1000)



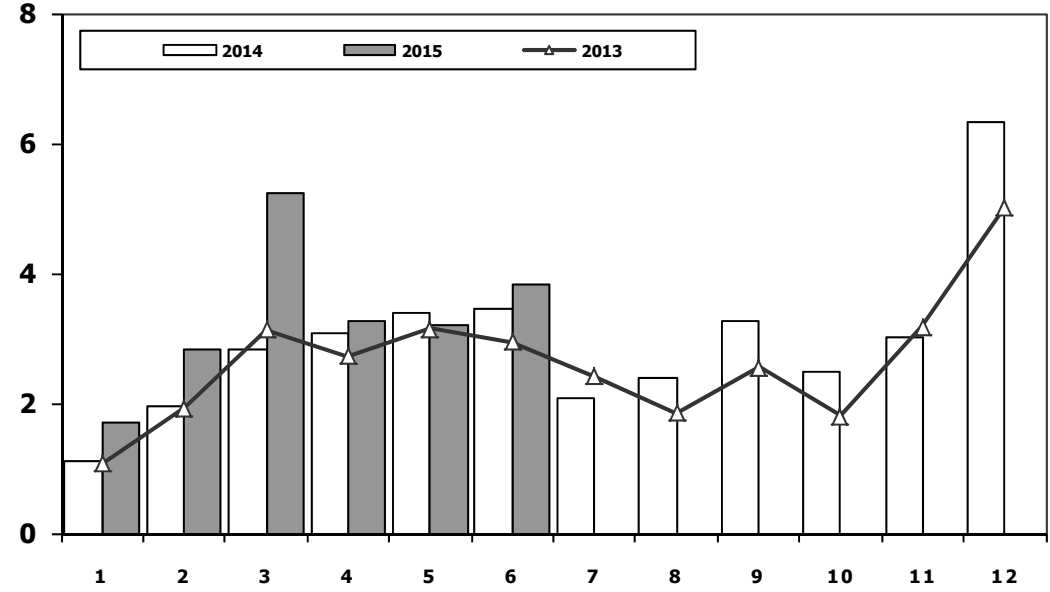
	1	2	3	4	5	6	7	8	9	10	11	12	6 Ay/Mo	Total
2005	1.026	1.636	2.001	2.599	2.569	2.780	2.148	2.819	2.567	2.477	2.297	2.089	12.611	27.008
2006	1.578	2.493	2.746	2.841	3.561	2.356	1.685	2.177	2.756	1.915	2.353	1.925	15.575	28.386
2007	1.812	1.778	2.063	2.107	2.266	1.853	1.653	2.065	2.372	2.239	2.231	1.602	11.879	24.041
2008	1.510	1.427	1.933	1.692	1.689	1.592	1.275	924	904	609	707	359	9.843	14.621
2009	267	344	388	638	759	828	741	534	586	765	725	715	3.224	7.290
2010	714	903	1.432	1.653	1.736	1.673	1.613	1.527	2.351	2.787	2.656	2.345	8.111	21.390
2011	2.458	2.610	3.105	3.403	3.847	3.599	2.952	1.559	2.957	2.823	2.603	2.807	19.022	34.723
2012	2.216	2.632	3.223	3.259	3.067	2.821	2.037	1.262	1.648	1.858	1.921	1.579	17.218	27.523
2013	1.633	1.817	2.196	2.070	2.455	2.370	1.955	1.969	2.396	2.510	2.343	2.080	12.541	25.794
2014	1.941	2.256	2.915	2.837	2.723	2.534	2.171	2.265	3.039	2.755	2.964	2.573	15.206	30.973
2015	2.187	2.767	3.297	3.235	3.039	3.366	0	0	0	0	0	0	17.891	17.891

Kamyon Pazarının Analizi (x1000) AYA > 5 Ton Truck Market Analysis (x1000) GVW > 5 Ton



Aylar / Months	10 Yil Ort. 10 Yrs Avr. (x1000)	2015 (x100)	%
1	1,4	1,7	17,8
2	2,2	2,8	31,7
3	3,2	5,2	62,6
4	2,8	3,3	14,6
5	3,0	3,2	6,5
6	3,0	3,8	29,1
Total	15,6	20,0	28,3

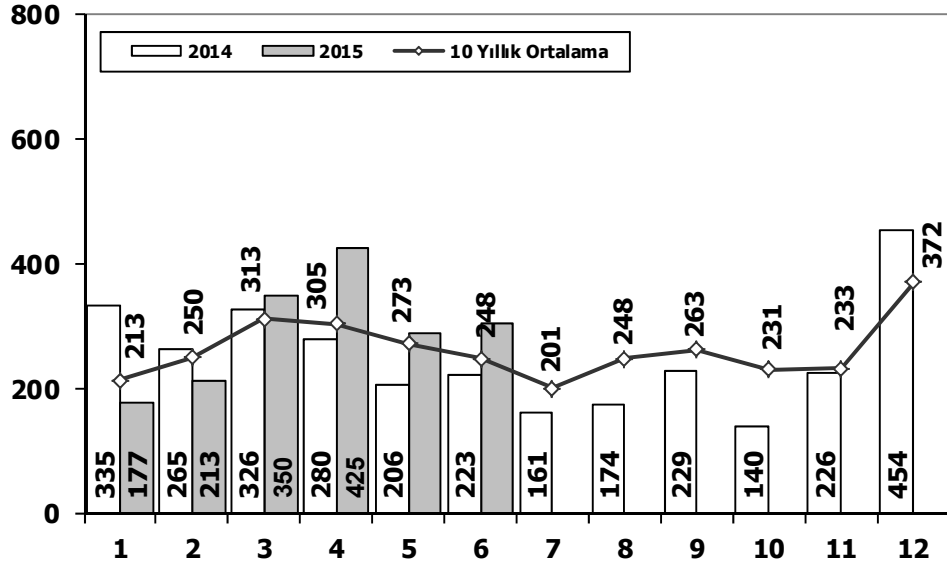
Kamyon Pazarı (x1000) AYA > 5 Ton Truck Market (x1000) GVW > 5 Ton



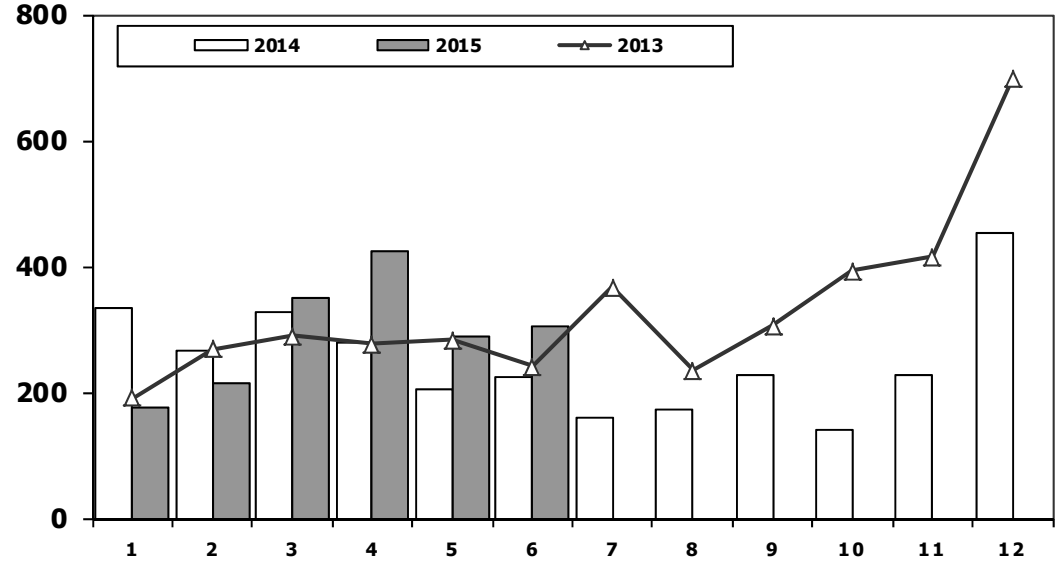
	1	2	3	4	5	6	7	8	9	10	11	12	6 Ay/Mo	Total
2005	1.693	2.186	3.288	3.484	3.413	3.147	2.504	4.028	4.043	3.708	3.918	6.570	17.211	41.982
2006	1.767	3.310	4.467	4.180	4.449	3.398	2.472	3.142	3.052	2.926	3.550	5.358	21.571	42.071
2007	1.554	2.055	3.065	2.940	2.865	2.613	2.372	3.145	2.988	2.886	3.258	4.444	15.092	34.185
2008	1.797	2.309	2.621	2.578	2.459	2.526	2.067	2.377	2.390	1.790	1.512	1.834	14.290	26.260
2009	771	759	1.034	1.342	1.355	1.651	1.156	1.205	1.780	866	981	2.015	6.912	14.915
2010	777	968	1.772	1.807	1.966	2.205	2.093	2.446	2.444	3.071	3.136	5.677	9.495	28.362
2011	2.552	3.292	4.418	3.754	3.803	3.749	1.996	2.478	3.081	2.774	3.108	5.787	21.568	40.792
2012	1.375	2.159	3.595	2.697	3.321	3.250	2.450	2.277	2.991	2.244	3.006	5.000	16.397	34.365
2013	1.077	1.931	3.127	2.720	3.145	2.951	2.411	1.845	2.554	1.801	3.173	5.025	14.951	31.760
2014	1.117	1.949	2.818	3.092	3.405	3.438	2.083	2.390	3.281	2.494	3.028	6.313	15.819	35.408
2015	1.708	2.840	5.227	3.251	3.189	3.823	0	0	0	0	0	0	20.038	20.038



Midibüs Pazarının Analizi (7-9 mt / 25-35 Kişilik) Midibus Market Analysis (7-9 mt / 25-35 Passengers)



Midibüs Pazarı (7-9 mt / 25-35 Kişilik Midibüs) Midibus Market (7-9 mt / 25-35 Passengers)

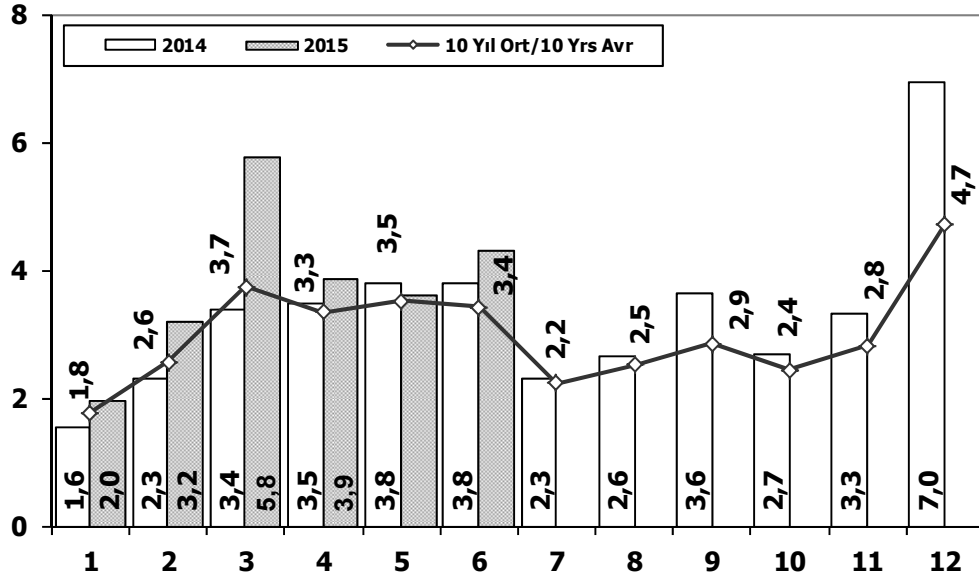


Aylar / Months	10 Yıl Ort. 10 Yrs Avr.	2015	%
1	213	177	-17
2	250	213	-15
3	313	350	12
4	305	425	39
5	273	288	5
6	248	306	23
Total	1.602	1.759	10

	1	2	3	4	5	6	7	8	9	10	11	12	6 Ay/Mo	Total
2005	182	258	432	393	439	269	252	459	436	329	328	574	1.973	4.351
2006	207	297	406	388	381	266	230	353	322	253	305	401	1.945	3.809
2007	207	272	404	238	302	283	164	365	399	279	283	465	1.706	3.661
2008	391	476	436	512	419	331	368	380	341	352	246	270	2.565	4.522
2009	154	124	160	220	174	198	160	175	168	143	206	323	1.030	2.205
2010	155	131	185	167	140	138	129	246	236	206	202	437	916	2.372
2011	138	195	294	316	280	258	211	305	301	276	260	270	1.481	3.104
2012	179	257	277	229	257	239	216	249	325	269	189	398	1.438	3.084
2013	191	268	289	276	283	241	367	235	305	392	415	697	1.548	3.959
2014	335	265	326	280	206	223	161	174	229	140	226	454	1.635	3.019
2015	177	213	350	425	288	306	0	0	0	0	0	0	1.759	1.759

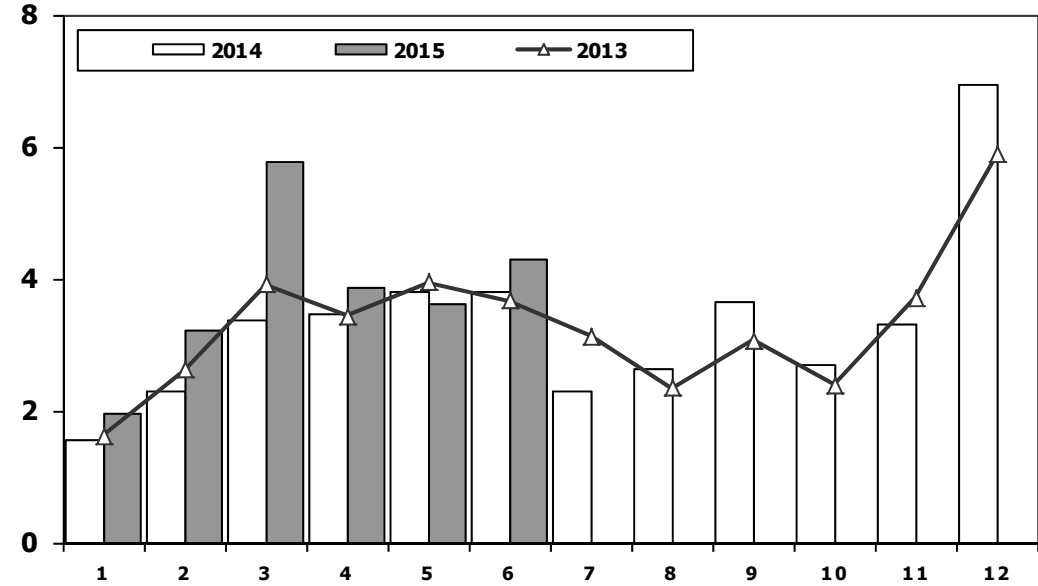
Ağır Ticari Araç Pazarının Analizi (x1000)

HCV Market Analysis (x1000)



Ağır Ticari Araç Pazarı (x1000)

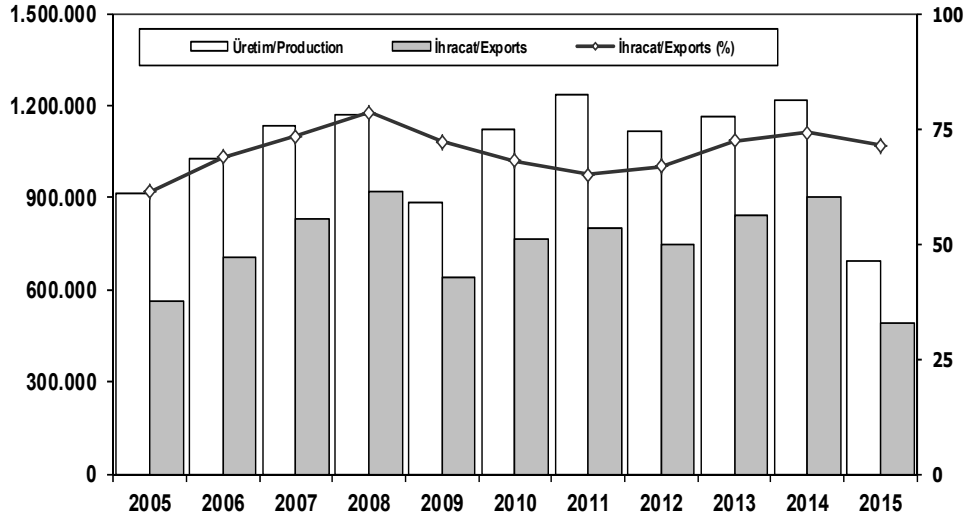
HCV Market (x1000)



Aylar / Months	10 Yıl Ort. / 10 Yrs Avr. (x1000)	2015 (x1000)	%
1	1,8	2,0	10,9
2	2,6	3,2	24,8
3	3,7	5,8	54,6
4	3,3	3,9	15,6
5	3,5	3,6	2,6
6	3,4	4,3	25,8
Total	18,3	22,7	23,8

	1	2	3	4	5	6	7	8	9	10	11	12	6 Ay/Mo	Total
2005	1.940	2.525	3.795	4.029	4.026	3.583	2.832	4.636	4.626	4.153	4.355	7.629	19.898	48.129
2006	2.052	3.708	5.038	4.815	5.060	3.848	2.786	3.607	3.520	3.263	4.031	5.935	24.521	47.663
2007	1.833	2.518	3.598	3.267	3.317	2.987	2.627	3.613	3.497	3.333	3.704	5.150	17.520	39.444
2008	2.265	2.870	3.165	3.266	3.029	3.069	2.536	2.922	2.897	2.263	1.899	2.340	17.664	32.521
2009	1.025	1.104	1.420	1.786	1.696	2.035	1.401	1.483	2.006	1.084	1.240	2.463	9.066	18.743
2010	955	1.141	2.059	2.133	2.251	2.494	2.373	2.881	2.787	3.376	3.444	6.365	11.033	32.259
2011	2.766	3.685	4.930	4.376	4.447	4.290	2.320	2.972	3.514	3.219	3.538	6.371	24.494	46.428
2012	1.674	2.503	4.073	3.065	3.957	3.714	2.818	2.700	3.568	2.739	3.335	5.713	18.986	39.859
2013	1.617	2.624	3.914	3.440	3.953	3.675	3.130	2.340	3.074	2.385	3.716	5.878	19.223	39.746
2014	1.555	2.287	3.383	3.461	3.788	3.789	2.299	2.640	3.649	2.686	3.316	6.952	18.263	39.805
2015	1.964	3.201	5.776	3.872	3.602	4.304	0	0	0	0	0	0	22.719	22.719

İhracat/Üretim (2005-2015) Exports/Production (2005-2015)



	2005	2006	2007	2008	2009	2010	2011	2012	2013	2014	2015
Üretim/Production	916.062	1.026.427	1.132.951	1.171.917	884.466	1.124.982	1.234.637	1.115.233	1.166.043	1.218.848	691.907
İhracat/Exports	561.078	706.402	829.879	920.763	637.855	763.670	801.112	745.354	843.467	902.194	493.268
İhracat/Exports (%)	61	69	73	79	72	68	65	67	72	74	71

Taşıt Araçları İhracatı (2013-2015) Motor Vehicle Exports (2013-2015)

SEKTÖR/SECTOR	2013	2014	2014	2015	2014/2015 (%)
			6 Ay-6 Mo		
OTOMOBİL/ P.Cars	484.504	581.993	299.535	303.857	1
TİCARİ ARAÇLAR / CV	343.967	303.187	152.800	182.479	19
* Kamyonet/Pick-Up	300.765	269.995	138.042	155.374	13
* Minibüs/Minibus	34.664	26.458	11.702	23.714	103
* Kamyon/Truck	3.055	1.281	527	491	-7
* Midibüs/Midibus	985	824	454	183	-60
* Otobüs/Bus	4.498	4.629	2.075	2.717	31
TAŞIT ARAÇLARI /MV TOTAL	828.471	885.180	452.335	486.336	8
TRAKTÖR/F.TRACTOR	14.996	17.014	8.309	6.932	-17
TOTAL	843.467	902.194	460.644	493.268	7

Otomotiv Ana ve Yan Sanayii İhracatı (ABD \$)

CBU and CKD Exports - \$

SEKTÖR/SECTOR	2012 Toplam (Total)	2013 Toplam (Total)	2014 Toplam (Total)	2014	2015	2015/2014 (%)
				6 Ay (6 Months)		
Toplam Yan Sanayi/Total Component Industry	8.215.954.295	9.065.017.539	9.508.032.776	4.983.410.803	4.346.852.353	-13
İç ve Dış Lastik / Tyres	1.199.572.093	1.130.005.892	1.126.947.745	609.772.621	485.891.378	-20
Emniyet Camı / Safety Glasses	120.641.763	135.230.310	143.231.168	78.033.928	64.513.477	-17
Motor (Engine)	272.085.582	319.294.885	171.893.752	93.054.806	74.844.192	-20
Akümülatör / Batteries	250.104.807	306.451.449	289.150.764	126.723.245	96.665.674	-24
Diğer Aksam ve Parça / Spare Parts&Components	6.373.550.048	7.174.035.002	7.776.809.346	4.075.826.203	3.624.937.633	-11
Toplam Ana Sanayi/Total Vehicle Industry	11.100.457.162	12.491.591.365	13.272.198.027	6.941.469.446	6.358.658.601	-8
Otobüs / Bus	855.424.304	937.790.963	985.983.007	479.320.839	489.326.117	2
Midibüs-Minibüs / Minibus- Minibus	161.806.275	147.769.644	97.685.509	32.576.112	68.423.362	110
Otomobil (P. Cars)	6.068.045.119	6.855.475.590	7.270.836.596	3.878.969.028	3.553.680.484	-8
Kamyon-Kamyonet/HCV-LCV	3.433.310.999	3.918.798.755	4.201.921.030	2.210.192.555	1.946.632.769	-12
Çekici/Truck-Tractor	71.336.635	218.385.732	252.416.256	122.191.855	119.743.516	-2
Römork ve Yarı Römork/Trailer-Semi Trailer	195.093.537	77.907.407	38.396.525	23.279.964	17.805.519	-24
Tarım Traktörü/Farm Tractor	315.440.294	335.463.275	424.959.103	194.939.093	163.046.834	-16
Toplam/Total	19.316.411.457	21.556.608.904	22.780.230.802	11.924.880.249	10.705.510.954	-10

Kaynak: Otomotiv Endüstrisi İhracatçıları Birliği

Firma Bazında İhracat (Adet)
Export Of member Companies (Unit)

FİRMALAR Companies	2013	2014	Ocak-Haziran 6 Months	
			2014	2015
			OYAK RENAULT	266.508
HYUNDAI ASSAN	85.500	179.793	88.040	100.263
TOFAŞ	160.309	142.234	75.647	87.793
TOYOTA	86.908	109.517	61.346	42.433
FORD OTOSAN	208.722	187.921	92.304	115.086
TÜRK TRAKTÖR	14.402	15.866	7.712	6.598
HONDA TÜRKİYE	2.121	1.560	815	996
M. BENZ TÜRK	5.331	3.438	1.503	2.012
MAN TÜRKİYE	898	937	493	817
A.I.O.S.	770	748	394	111
HATTAT TARIM	594	1.148	597	334
TEMSA GLOBAL	663	423	146	116
KARSAN	10.120	37	12	788
OTOKAR	620	580	199	292
BMC	1	0	0	0
GENEL TOPLAM	843.467	902.194	460.644	493.268

Kaynak: OSD

Sektör Bazında İhracat (\$)
Exports on Sectorial Basis

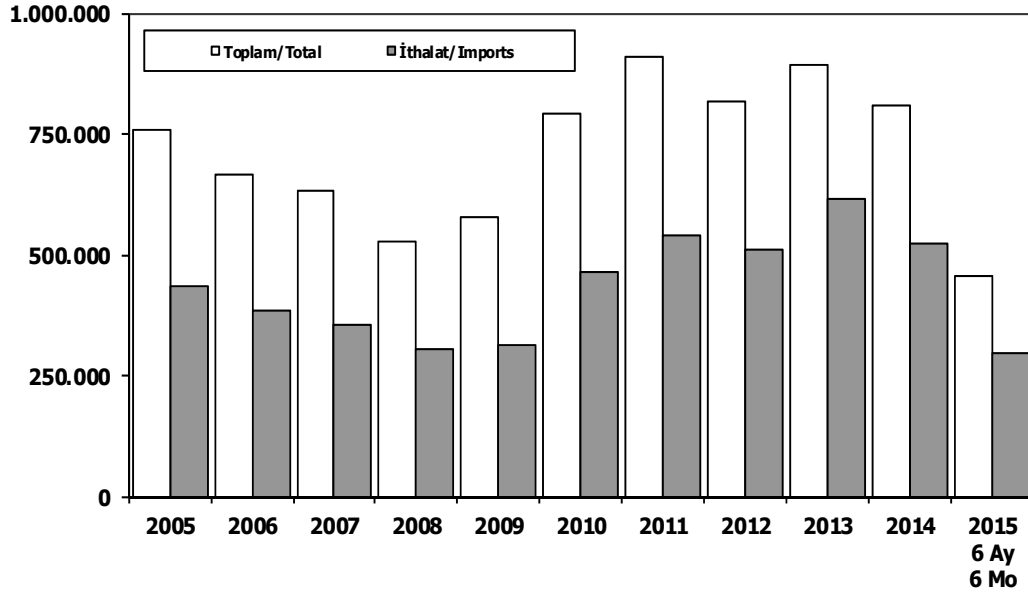
SEKTÖRLER	HAZİRAN				OCAK-HAZİRAN			
	2014	2015	2014/2015 (%)	2015 Pay (%)	2014	2015	2014/2015 (%)	2015 Pay (%)
1 Otomotiv Endüstrisi	2.029.746	1.975.601	-2,7	16,9	11.701.557	10.495.556	-10,3	14,3
2 Hazır giyim ve Konfeksiyon	1.595.127	1.463.536	-8,2	12,5	9.422.856	8.171.846	-13,3	11,2
3 Kimyevi Maddeler ve Mamulleri	1.518.869	1.426.430	-6,1	12,2	8.884.845	7.965.656	-10,3	10,9
4 İhracatçı Birlikleri Kaydından Muaf İhracat	**	**	**	**	3.707.597	6.562.421	77,0	**
5 Çelik	1.063.910	832.256	-21,8	7,1	7.004.990	5.346.532	-23,7	7,3
6 Elektrik Elektronik ve Hizmet	970.318	967.741	-0,3	8,3	5.994.249	5.079.962	-15,3	6,9
7 Tekstil ve Hammaddeleri	706.505	681.078	-3,6	5,8	4.519.281	3.996.909	-11,6	5,5
8 Hububat, Bakliyat, Yağlı Tohumlar ve Mam.	592.568	544.274	-8,1	4,7	3.650.871	3.130.190	-14,3	4,3
9 Demir ve Demir Dışı Metaller	495.849	481.442	-2,9	4,1	3.418.037	3.063.323	-10,4	4,2
10 Makine ve Aksamları	500.272	471.011	-5,8	4,0	3.022.055	2.726.009	-9,8	3,7
11 Mobilya, Kağıt ve Orman Ürünleri	384.158	355.561	-7,4	3,0	2.270.717	2.015.401	-11,2	2,8
12 Madencilik Ürünleri	404.038	395.516	-2,1	3,4	2.372.617	1.986.156	-16,3	2,7
13 İklimlendirme Sanayii	376.016	322.512	-14,2	2,8	2.265.415	1.831.987	-19,1	2,5
14 Mücevher	147.654	233.620	58,2	2,0	1.145.455	1.419.171	23,9	1,9
15 Çimento Cam Seramik ve Toprak Ürünleri	278.038	238.882	-14,1	2,0	1.636.816	1.417.768	-13,4	1,9
16 Fındık ve Mamulleri	138.260	209.631	51,6	1,8	919.696	1.355.670	47,4	1,9
17 Halı	200.165	193.672	-3,2	1,7	1.144.990	999.839	-12,7	1,4
18 Yaş Meyve ve Sebze	167.817	181.705	8,3	1,6	1.145.406	995.194	-13,1	1,4
19 Su Ürünleri ve Hayvansal Mamuller	158.085	110.629	-30,0	0,9	1.137.283	918.982	-19,2	1,3
20 Deri ve Deri Mamulleri	149.417	116.002	-22,4	1,0	882.749	753.019	-14,7	1,0
21 Savunma ve Havaçılık Sanayii	180.262	159.978	-11,3	1,4	777.762	730.909	-6,0	1,0
22 Meyve Sebze Mamulleri	108.379	110.854	2,3	0,9	682.181	609.073	-10,7	0,8
23 Kuru Meyve ve Mamulleri	102.183	92.815	-9,2	0,8	654.705	580.293	-11,4	0,8
24 Tütün ve Mamulleri	91.685	54.936	-40,1	0,5	527.391	458.611	-13,0	0,6
25 Gemi ve Yat	113.596	53.595	-52,8	0,5	562.727	443.210	-21,2	0,6
26 Zeytin ve Zeytinyağı	19.273	17.915	-7,0	0,2	129.561	108.284	-16,4	0,1
27 Diğer Sanayi Ürünleri	11.475	10.192	-11,2	0,1	61.075	53.582	-12,3	0,1
28 Süs Bitkileri	3.832	2.451	-36,0	0,0	52.019	45.691	-12,2	0,1
TOPLAM	12.507.495	11.703.832	-6,4	100,0	79.694.902	73.261.245	-8,1	100,0

Kaynak: TİM

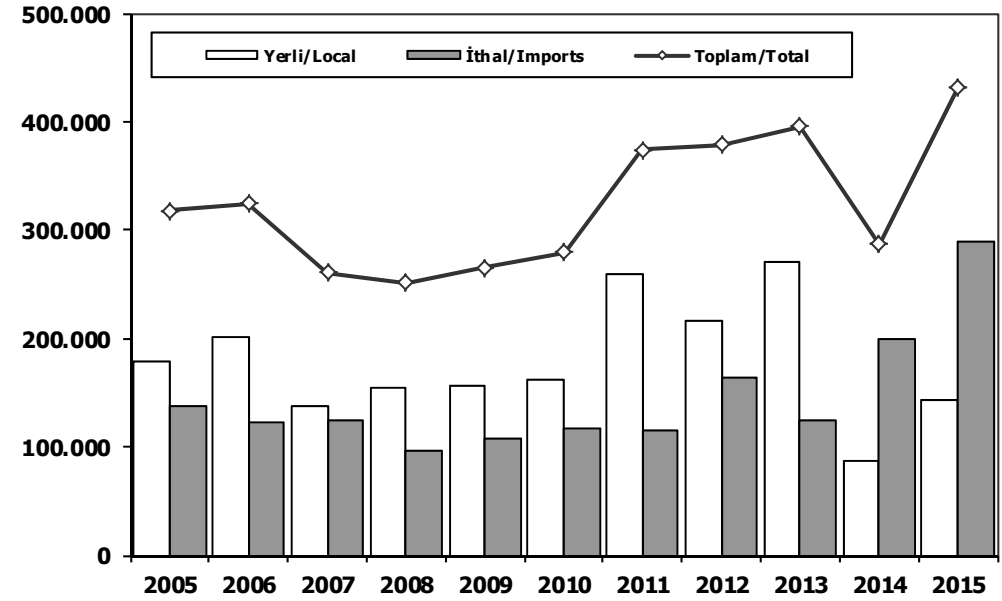
First 3 Sectors:

- 1- Transport Vehicle and Component Industry
- 2- Ready Wear and Confection
- 3- Chemical Articles and Products

Toplam Pazar (Otomobil+T.Araç) Total Market (P.Cars+C.V)



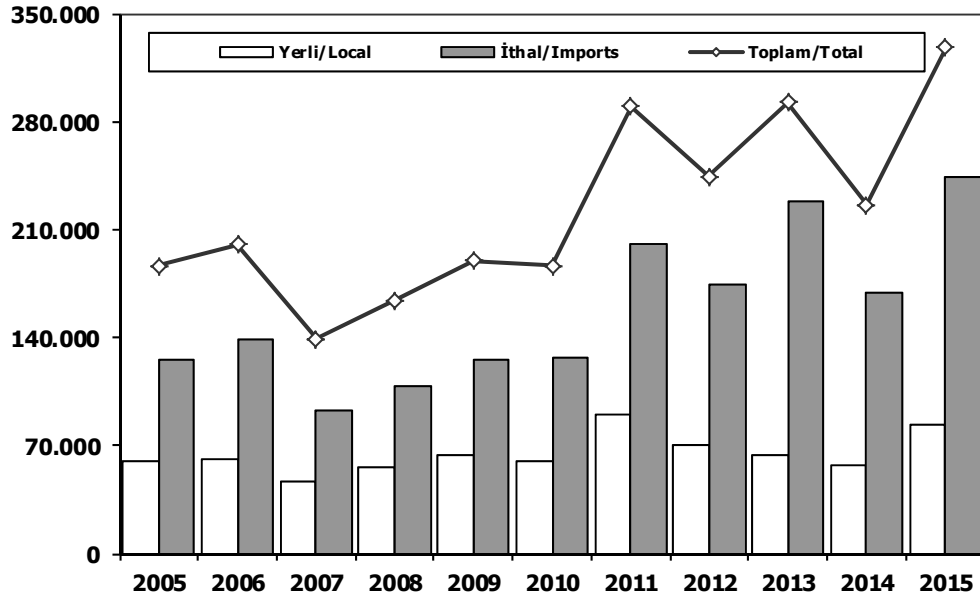
Hafif Araçlar Pazarı (2005-2015 Ocak-Haziran) LV Market (2005-2015 January-June)



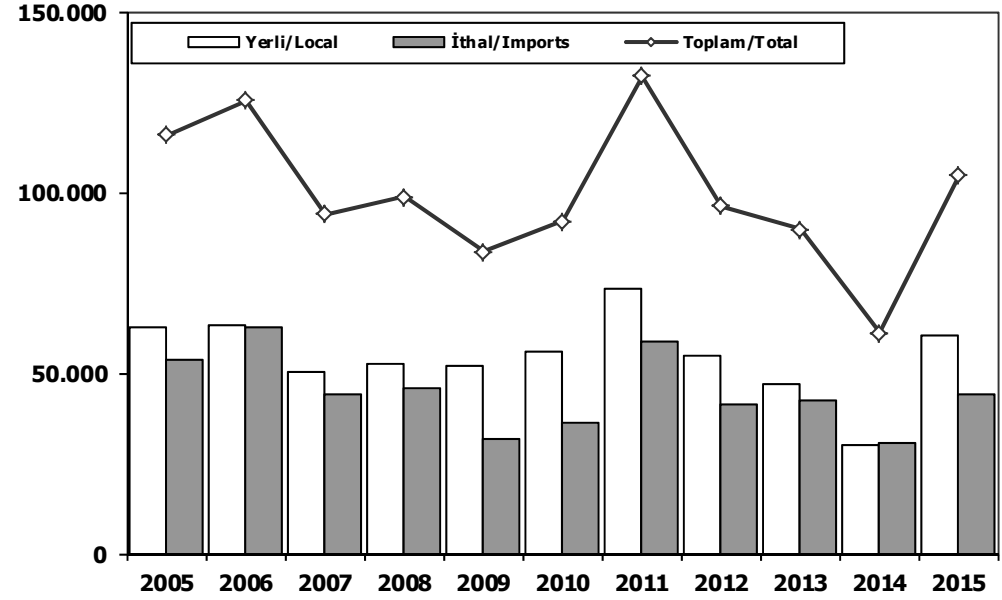
	2005	2006	2007	2008	2009	2010	2011	2012	2013	2014	2014 6 Ay 6 Mo	2015 6 Ay 6 Mo
Toplam/Total	758.537	665.515	634.206	526.544	575.869	793.172	910.867	817.620	893.124	807.486	305.124	455.269
İthalat/Imports	436.033	382.460	355.752	306.087	313.921	465.408	538.532	511.694	615.609	522.842	204.426	294.412
İthalat/Imports (%)	57	57	56	58	55	59	59	63	69	65	67	65

	2005	2006	2007	2008	2009	2010	2011	2012	2013	2014	2015
Yerli/Local	179.599	201.866	136.792	154.609	156.874	162.797	258.928	215.908	271.096	87.190	144.099
İthal/Imports	137.819	122.618	123.663	96.377	108.441	116.483	115.458	162.944	124.724	199.671	288.451
Toplam/Total	317.418	324.484	260.455	250.986	265.315	279.280	374.386	378.852	395.820	286.861	432.550
İthalat/Imports (%)	43	38	47	38	41	42	31	43	32	70	67

Otomobil Pazarı (2005-2015 Ocak-Haziran) P.Cars Market (2005-2015 January-June)

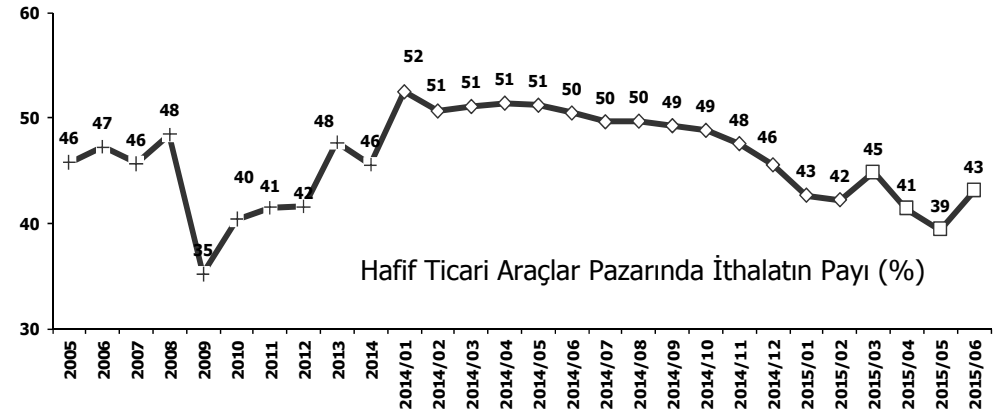
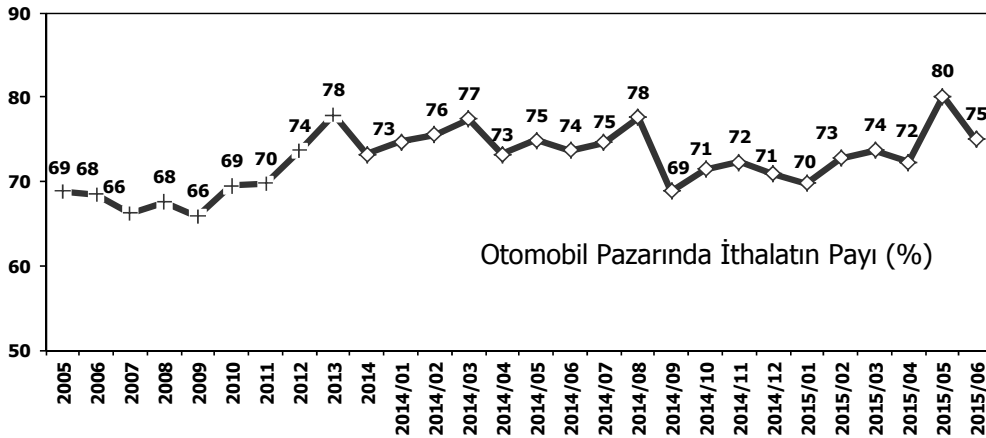


Hafif Ticari Araçlar Pazarı (2005-2015 Ocak-Haziran) Light Commercial Vehicle Market (2005-2015 January-June)



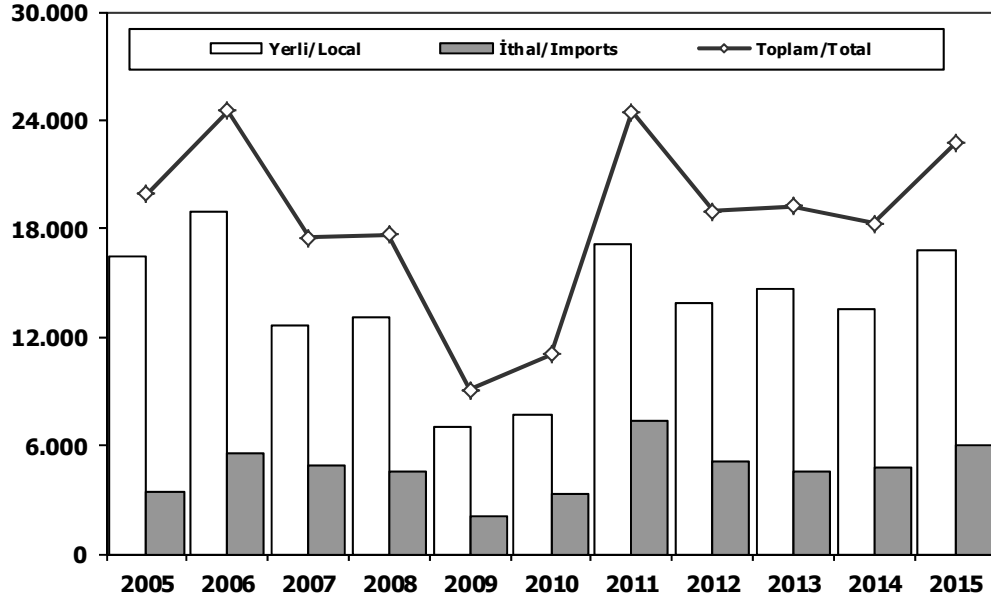
	2005	2006	2007	2008	2009	2010	2011	2012	2013	2014	2015
Yerli/Local	60.155	60.666	46.237	55.727	64.339	59.686	89.601	69.994	63.686	56.924	83.639
İthal/Imports	126.167	139.445	92.894	108.718	125.357	126.619	200.145	174.496	228.420	168.849	244.207
Toplam/Total	186.322	200.111	139.131	164.445	189.696	186.305	289.746	244.490	292.106	225.773	327.846
İthalat/Imports (%)	68	70	67	66	66	68	69	71	78	75	74

	2005	2006	2007	2008	2009	2010	2011	2012	2013	2014	2015
Yerli/Local	62.463	62.997	50.140	52.714	52.144	55.772	73.343	54.730	46.961	30.266	60.460
İthal/Imports	53.432	62.421	43.898	45.891	31.517	36.178	58.783	41.412	42.676	30.822	44.244
Toplam/Total	115.895	125.418	94.038	98.605	83.661	91.950	132.126	96.142	89.637	61.088	104.704
İthalat/Imports (%)	46	50	47	47	38	39	44	43	48	50	42



Ağır Ticari Araçlar Pazarı (2005-2015 Ocak-Haziran)

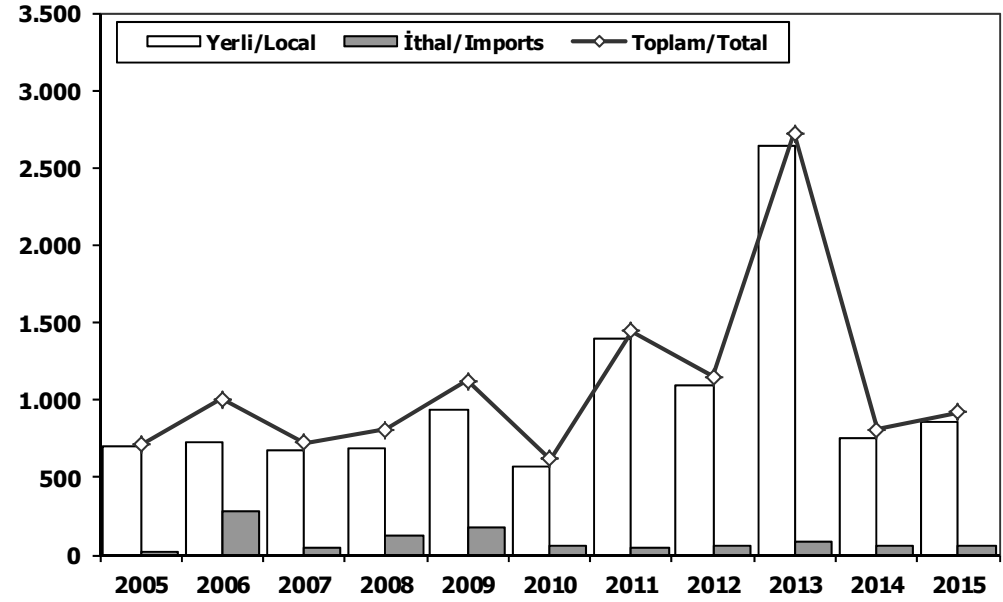
HCV Market (2005-2015 January-June)



	2005	2006	2007	2008	2009	2010	2011	2012	2013	2014	2015
Yerli/Local	16.469	18.904	12.688	13.128	7.022	7.704	17.182	13.868	14.702	13.508	16.758
İthal/Imports	3.429	5.617	4.832	4.536	2.044	3.329	7.312	5.118	4.521	4.755	5.961
Toplam/Total	19.898	24.521	17.520	17.664	9.066	11.033	24.494	18.986	19.223	18.263	22.719
İthalat/Imports (%)	17	23	28	26	23	30	30	27	24	26	26

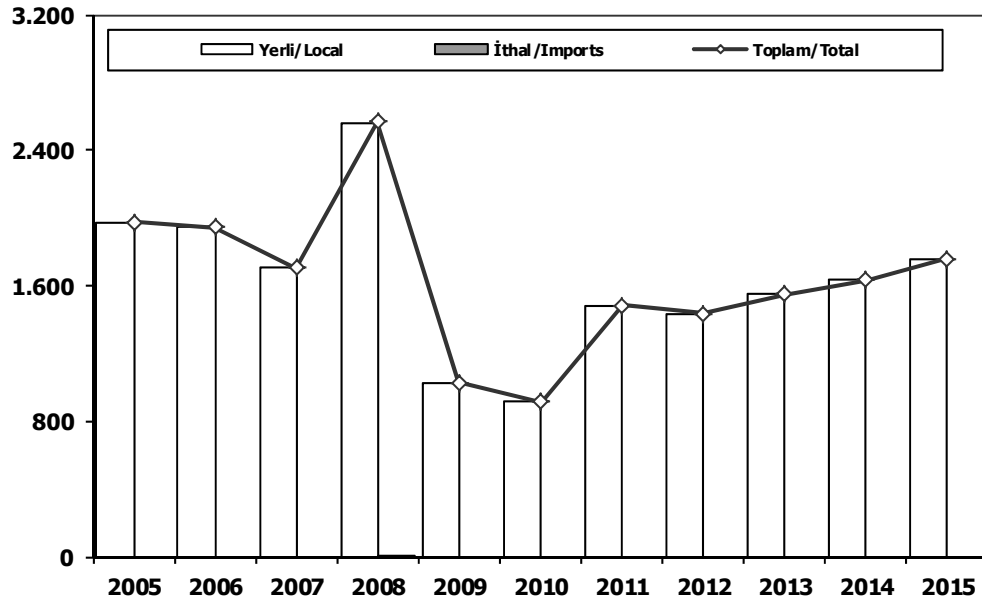
Otobüs Pazarı (2005-2015 Ocak-Haziran)

Bus Market (2005-2015 January-June)



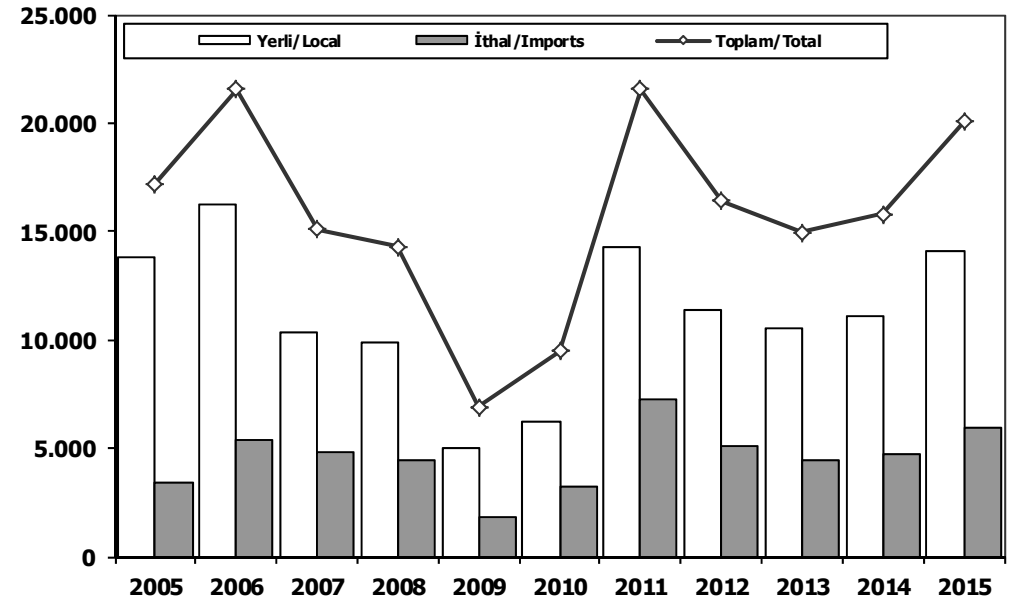
	2005	2006	2007	2008	2009	2010	2011	2012	2013	2014	2015
Yerli/Local	698	729	673	688	943	568	1.398	1.092	2.639	749	862
İthal/Imports	16	276	49	121	181	54	47	59	85	60	60
Toplam/Total	714	1.005	722	809	1.124	622	1.445	1.151	2.724	809	922
İthalat/Imports (%)	2	27	7	15	16	9	3	5	3	7	7

Midibüs Pazarı (2005-2015 Ocak-Haziran) (7-9 mt / 25-35 Kişilik)
 Midibus (2005-2015 January-June) Market (7-9 mt / 25-35 Passengers)



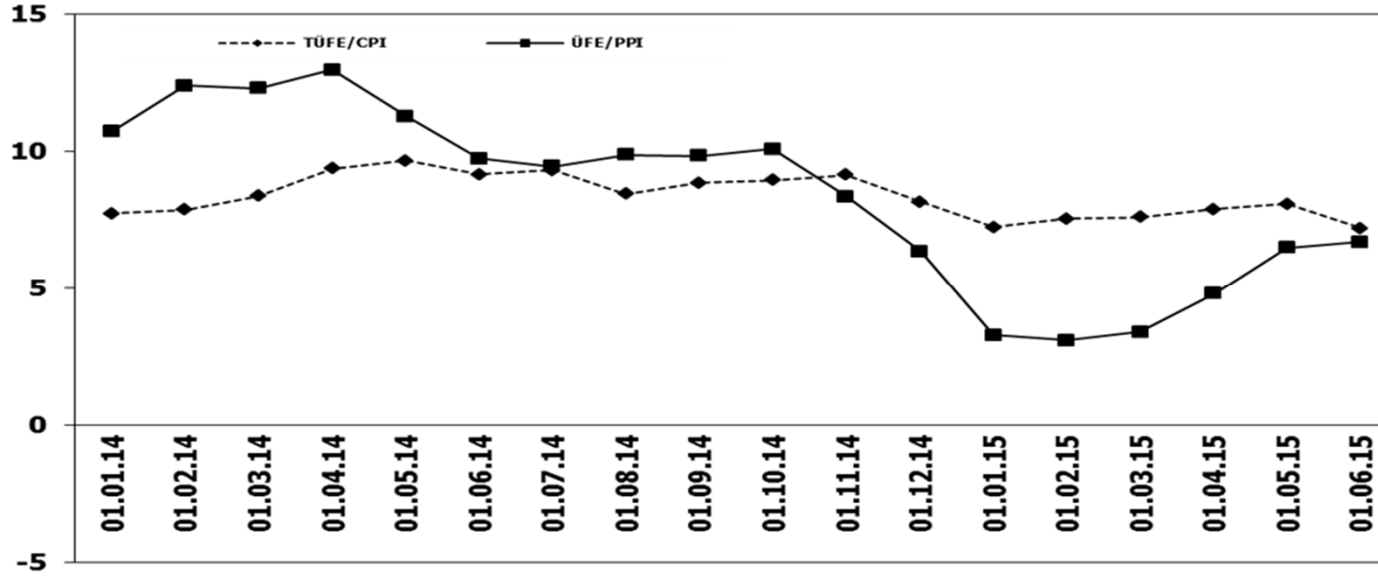
	2005	2006	2007	2008	2009	2010	2011	2012	2013	2014	2015
Yerli/Local	1.973	1.945	1.706	2.554	1.030	916	1.481	1.438	1.548	1.635	1.759
İthal/Imports	0	0	0	11	0	0	0	0	0	0	0
Toplam/Total	1.973	1.945	1.706	2.565	1.030	916	1.481	1.438	1.548	1.635	1.759
İthalat/Imports (%)	0	0	0	0	0	0	0	0	0	0	0

Kamyon Pazarı (2005-2015 Ocak-Haziran)
 Truck Market (2005-2015 January-June)

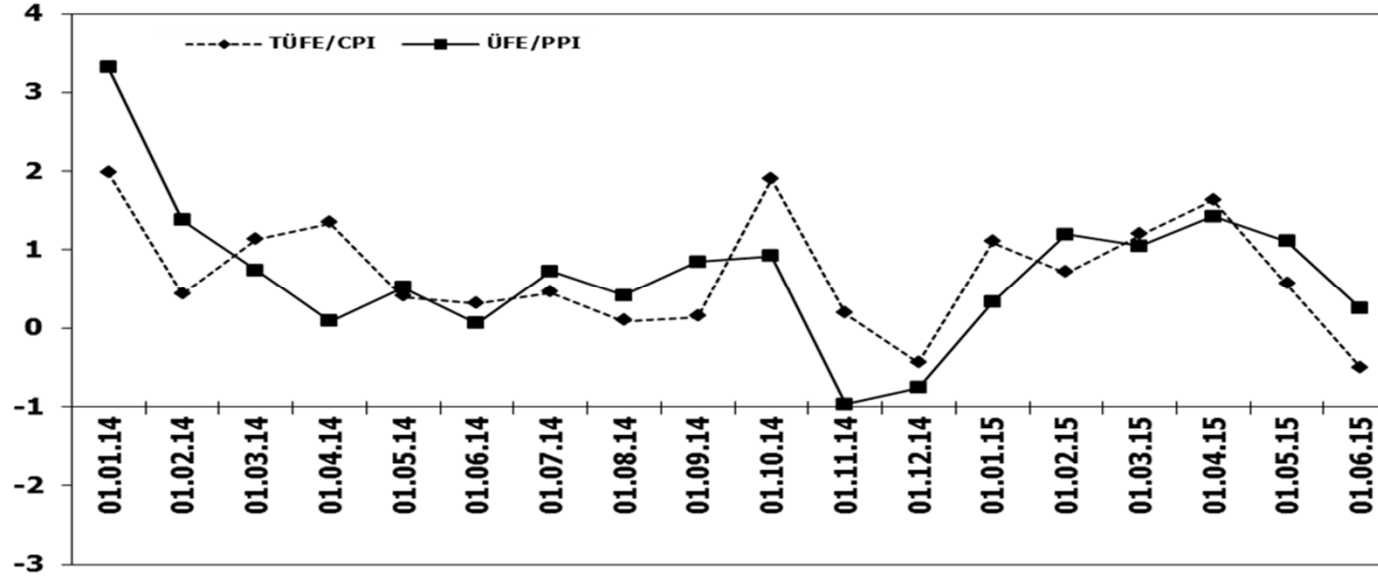


	2005	2006	2007	2008	2009	2010	2011	2012	2013	2014	2015
Yerli/Local	13.798	16.230	10.309	9.886	5.049	6.220	14.303	11.338	10.515	11.124	14.137
İthal/Imports	3.413	5.341	4.783	4.404	1.863	3.275	7.265	5.059	4.436	4.695	5.901
Toplam/Total	17.211	21.571	15.092	14.290	6.912	9.495	21.568	16.397	14.951	15.819	20.038
İthalat/Imports (%)	20	25	32	31	27	34	34	31	30	30	29

TÜFE ve ÜFE'nin Yıllık Değişimi (%) CPI and PPI Yearly Changes (%)



TÜFE ve ÜFE'nin Aylık Değişimi (%) CPI and PPI Monthly Changes (%)



2015 Yılı İthal Hafif Araç Satışları 2015 Light Vehicles Import Sales

2015 YILI İTHAL OTOMOBİL SATIŞLARI / P.Cars Import 2015

	2014 TOPLAMI 2014 Total	1	2	3	4	5	6	7	8	9	10	11	12	2015 TOPLAMI 2015 Total
VOLKSWAGEN	84.646	4.491	6.942	9.711	10.487	10.793	8.922							51.346
FORD	35.682	1.101	2.782	3.636	4.681	4.678	4.645							21.523
OPEL	39.255	952	2.239	3.964	4.753	3.943	4.460							20.311
DACIA	27.897	1.709	2.289	2.968	2.872	2.918	3.661							16.417
B.M.W	26.174	1.219	1.536	2.369	2.717	2.896	2.652							13.389
RENAULT	25.672	653	1.309	2.874	1.927	3.566	4.002							14.331
PEUGEOT	17.026	846	1.110	2.039	2.635	2.739	2.086							11.455
SKODA	14.637	515	1.568	2.120	2.355	2.162	2.086							10.806
NISSAN	19.422	949	1.372	1.859	2.304	2.402	2.305							11.191
MERCEDES	23.100	417	1.384	2.200	2.135	2.101	3.558							11.795
HYUNDAI	21.685	784	1.011	1.884	2.259	2.392	2.423							10.753
AUDI	17.809	610	1.103	1.685	2.006	1.738	1.604							8.746
CITROEN	14.389	683	941	1.522	2.077	1.406	1.810							8.439
SEAT	12.697	164	1.103	1.496	1.852	1.740	1.768							8.123
TOYOTA	10.146	327	535	1.070	1.547	1.006	757							5.242
KIA	11.017	330	676	1.183	1.245	1.120	1.185							5.739
VOLVO	6.060	295	290	657	751	856	701							3.550
FIAT	6.179	248	377	481	617	382	520							2.625
JEEP	1.960	239	281	308	383	268	325							1.804
HONDA	3.269	98	241	273	152	193	211							1.168
SUBARU	1.402	65	40	261	176	144	140							826
LAND ROVER	1.207	31	87	240	94	132	148							732
MITSUBISHI	1.159	64	64	92	149	105	119							593
MINI (İngiliz)	1.071	21	47	139	136	143	135							621
MAZDA	1.291	27	80	49	87	130	181							554
PROTON	707	55	40	67	70	84	70							386
ALFA ROMEO	967	34	59	56	76	134	79							438
PORSCHE	588	45	48	53	47	55	34							282
CHERY	325	26	38	46	39	35	32							216
SSANGYONG	531	44	21	31	29	49	163							337
SUZUKI	958	27	17	20	28	14	2							108
TATA	126	21	24	21	19	23	19							127
JAGUAR	52	0	25	50	7	6	8							96
SMART	76	4	3	10	11	5	7							40
GEEELY	95	4	7	3	6	3	1							24
MASERATI	83	2	2	3	9	9	7							32
BENTLEY	21	0	4	1	0	3	1							9
LAMBORGHINI	2	1	1	2	1	0	1							6
FERRARI	11	0	0	1	2	2	0							5
INFINITI	6	1	1	1	0	10	7							20
LANCIA	210	0	2	0	0	0	0							2
CHEVROLET	572	0	0	0	0	0	0							0
TOPLAM	429.982	17.102	29.699	45.445	50.741	50.385	50.835	0	0	0	0	0	0	244.207

2015 YILI İTHAL HAFIF TİCARİ ARAÇ SATIŞLARI / Light Commercial Vehicles Import 2015

	2014 TOPLAMI 2014 Total	1	2	3	4	5	6	7	8	9	10	11	12	2015 TOPLAMI 2015 Total
VOLKSWAGEN	24.001	1.336	2.575	3.182	2.680	2.054	2.049							13.876
RENAULT	8.716	501	673	1.104	1.030	923	1.459							5.690
MERCEDES	8.028	391	424	1.009	654	642	683							3.803
FIAT	7.664	347	491	782	815	786	685							3.906
PEUGEOT	5.832	303	403	704	824	738	708							3.680
CITROEN	6.048	269	392	730	684	301	432							2.808
DACIA	6.572	250	242	696	642	583	731							3.144
MITSUBISHI	4.188	390	324	518	246	205	191							1.874
KIA	2.057	147	221	136	444	373	373							1.694
IVECO	2.524	117	139	282	235	210	224							1.207
TOYOTA	1.670	73	45	255	207	299	177							1.056
HYUNDAI	1.565	89	104	164	208	142	113							820
SSANGYONG	626	31	34	69	71	8	13							226
ISUZU	1.728	27	19	32	59	25	15							177
TATA	290	22	21	23	21	19	21							127
FORD	333	22	22	5	22	36	46							153
NISSAN	275	1	0	0	2	0	0							3
MAZDA	9	0	0	0	0	0	0							0
TOPLAM	82.126	4.316	6.129	9.691	8.844	7.344	7.920	0	0	0	0	0	0	44.244