



OTOMOTİV SANAYİİ DERNEĞİ  
AUTOMOTIVE MANUFACTURERS ASSOCIATION

# AYLIK RAPOR

## Automotive Industry Monthly Report

Kasım / November 2015

- **Üretim**/Production
- **Satış**/Sales
- **İthalat**/Imports
- **İhracat**/Exports

OSD "OICA" Üyesidir



OSD is a Member of "OICA"



## 2015 Kasım Ayı Özeti / 2015 November Summary

KONULAR/MATTERS		KASIM / NOVEMBER			11 AY / 11 MONTHS			SON 12 AYLIK / YoY		
		2014	2015	2015/ 2014 (%)	2014	2015	2015/ 2014 (%)	2014	2015	2015/ 2014 (%)
Üretim/Production	Toplam/ Total	113.093	126.236	12	1.049.852	1.233.035	17	1.133.018	1.353.628	19
	Otomobil/ P.Cars	69.466	72.872	5	662.959	716.339	8	713.894	786.819	10
Pazar/ Market	Toplam/ Total	83.937	88.005	5	653.545	847.720	30	789.141	1.001.661	27
	Otomobil/ P.Cars	59.695	62.397	5	477.277	611.256	28	578.476	721.310	25
İthalat/ Import	Toplam/ Total	52.682	57.776	10	430.700	559.144	30	523.130	653.275	25
	Otomobil/ P.Cars	43.156	47.358	10	352.017	456.989	30	430.994	534.954	24
İhracat/Export	Toplam/ Total	80.564	93.172	16	802.872	899.996	12	867.871	982.304	13
	Otomobil/ P.Cars	51.528	57.183	11	529.633	544.561	3	572.467	596.921	4
İhracat / Export (\$)	Toplam/ Total **	1.859.001.230	1.978.004.463	6	20.920.658.672	19.753.736.057	-6	22.721.904.091	21.597.701.093	-5
	Otomobil/ P.Cars	589.372.910	632.050.446	7	6.671.073.114	6.264.362.543	-6	7.194.634.319	6.851.697.509	-5
PARAMETRELER / PARAMETERS		KASIM / NOVEMBER			11 AY / 11 MONTHS			SON 12 AYLIK / YoY		
		2014	2015	2015/ 2014 (%)	2014	2015	2015/ 2014 (%)	2014	2015	2015/ 2014 (%)
ÜFE/PPI		-0,97	-1,42	**	7,18	6,06	**	8,36	5,33	**
TÜFE/CPI		0,18	0,67	**	8,65	8,58	**	9,15	7,61	**
Sanayi Endeksi/ Industry Index		-0,84	-1,26	**	8,19	6,66	**	9,08	6,06	**
₺ (*)		2,2087	2,8552	29	2,1790	2,7155	25	2,1751	2,6830	23
EURO (*)		2,7516	3,0825	12	2,8973	3,0085	4	2,9004	2,9932	3
Japon Yeni (*)		1,8582	2,3315	25	2,0668	2,2320	8	2,0625	2,2072	7

(\*) Ortalama Değerler / Average Values

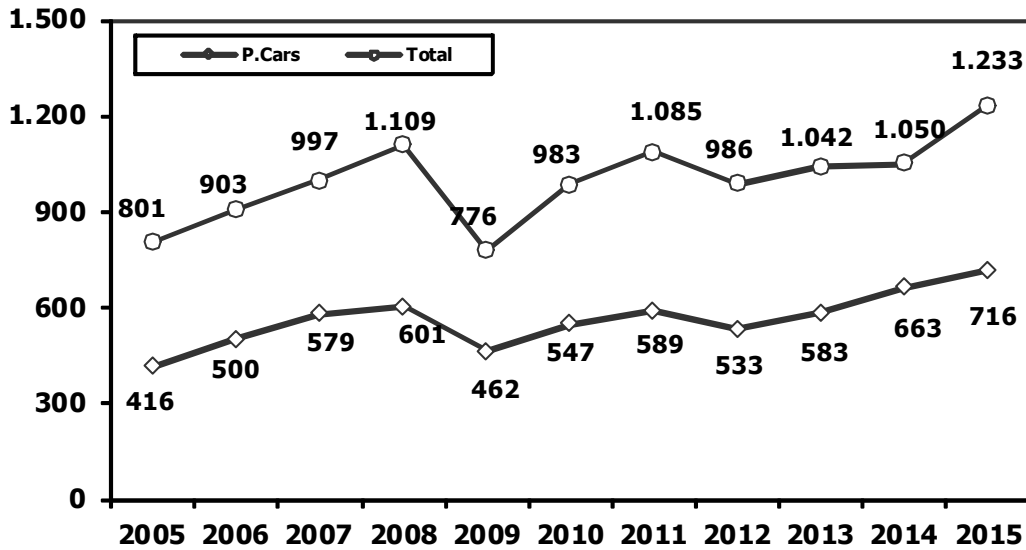
(\*\*) Toplam Sanayi / Total Industry Including Components

## 2014/2015 Yılları Üretim 2014/2015 Production

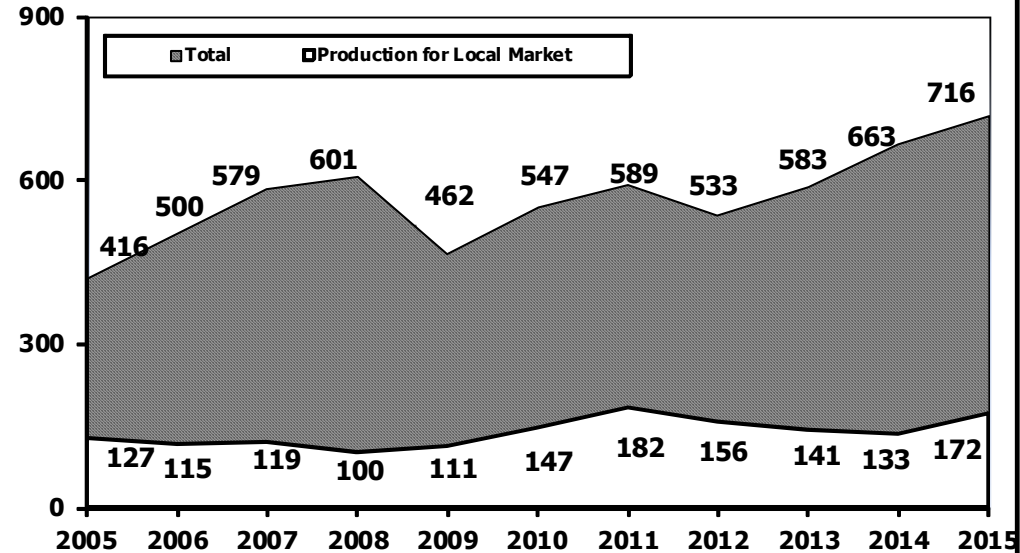
K.KAMYON : AYA 3.5-12 Ton (L.Truck:GVW 3.5-12 Ton)  
B.KAMYON : AYA 12 Ton'dan Büyük (M.Truck:GVW 12 Ton And Up)

TİPLER	KASIM AYI ÜRETİMİ November Production		11 AYLIK ÜRETİM 11 Months Production		DEĞİŞİM % Percent Change %	
	2014	2015	2014	2015	KASIM November	11 AY 11 Months
<b>OTOMOBİL - Pass.Car</b>	<b>69.466</b>	<b>72.872</b>	<b>662.959</b>	<b>716.339</b>	<b>5</b>	<b>8</b>
<b>TİCARİ ARAÇLAR - Commercial Vehicles</b>	<b>43.627</b>	<b>53.364</b>	<b>386.893</b>	<b>516.696</b>	<b>22</b>	<b>34</b>
* B. KAMYON - M. Truck	2.719	2.200	26.181	27.892	-19	7
* K. KAMYON - L. Truck	276	507	2.940	3.924	84	33
* KAMYONET - Pick Up	35.921	47.443	315.679	425.757	32	35
* OTOBÜS - Bus	582	854	5.909	7.868	47	33
* MİNİBÜS - Minibus	3.857	1.689	31.328	45.065	-56	44
* MİDİBÜS - Midibus	272	671	4.856	6.190	147	27
<b>TAŞIT ARAÇLARI TOPLAM - MV Total</b>	<b>113.093</b>	<b>126.236</b>	<b>1.049.852</b>	<b>1.233.035</b>	<b>12</b>	<b>17</b>
TRAKTÖR - F. Tractor	4.324	4.276	45.076	47.827	-1	6
<b>GENEL TOPLAM - Grand Total</b>	<b>117.417</b>	<b>130.512</b>	<b>1.094.928</b>	<b>1.280.862</b>	<b>11</b>	<b>17</b>

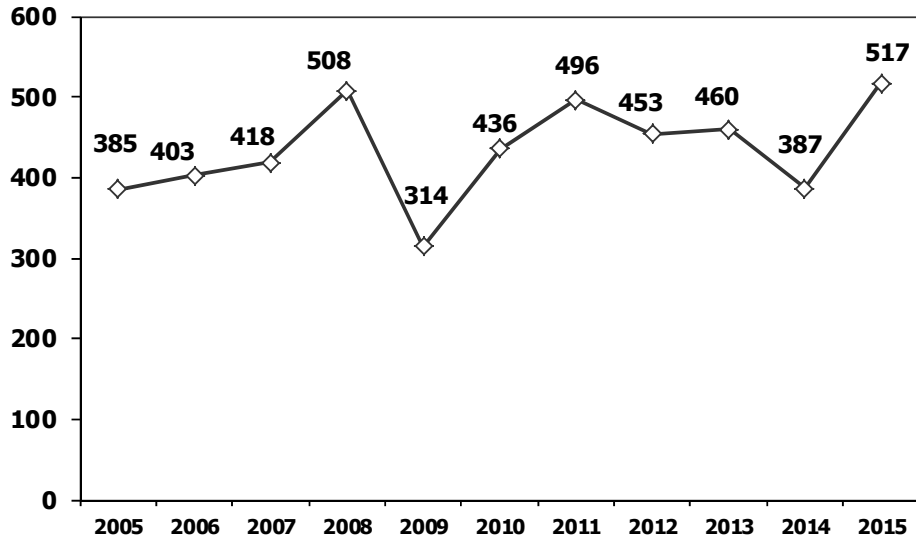
**Toplam Üretim ve Otomobil Üretimi (x1000) (Ocak-Kasım)**  
Total & P.Cars Production (x1000) (January- November)



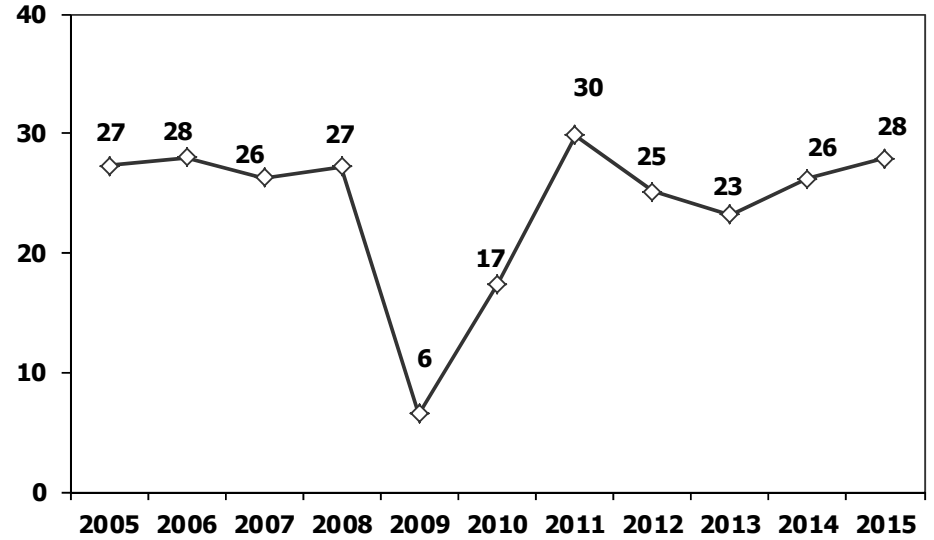
**Otomobil Üretimi ve İhracat (x1000) (Ocak-Kasım)**  
P.Cars Production & Exports (x1000) (January- November)



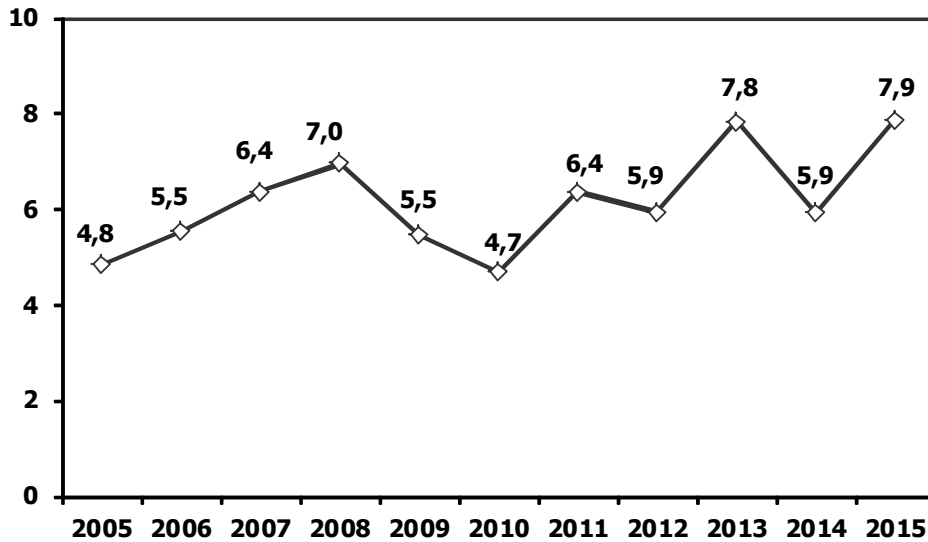
**Ticari Araç Üretimi** (x1000) (Ocak-Kasım)  
Commercial Vehicle Production (x1000) (January- November)



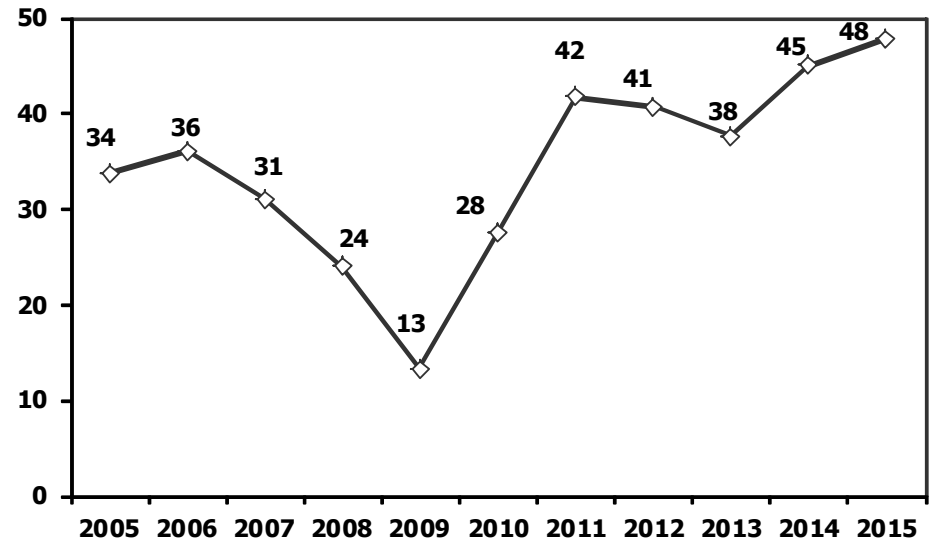
(AYA >12 Ton) **Büyük Kamyon Üretimi** (x1000) (Ocak-Kasım)  
(GVW >12 Ton) Heavy Truck Production (x1000) (January- November)



**Otobüs Üretimi** (x1000) (Ocak-Kasım)  
Bus Production (x1000) (January- November)

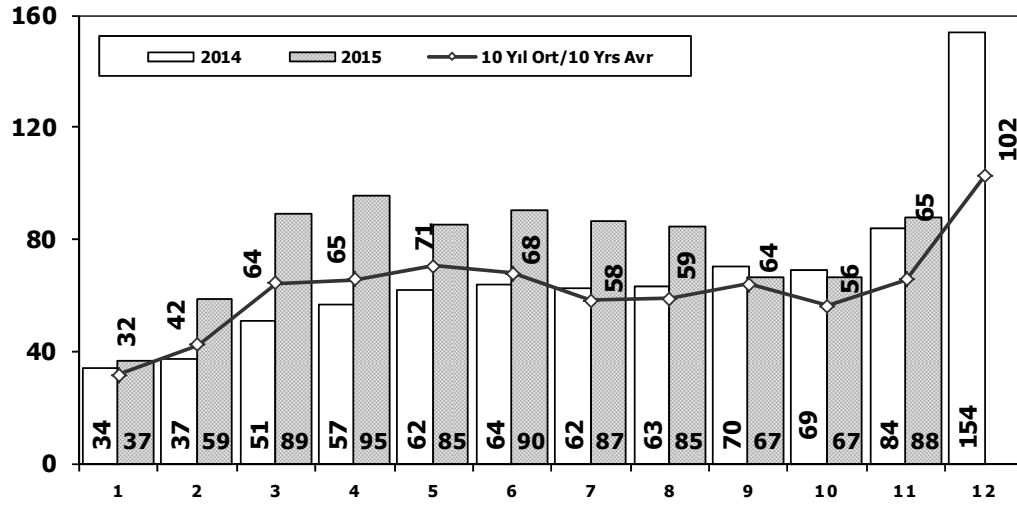


**Traktör Üretimi** (x1000) (Ocak-Kasım)  
F. Tractor Production (x1000) (January- November)

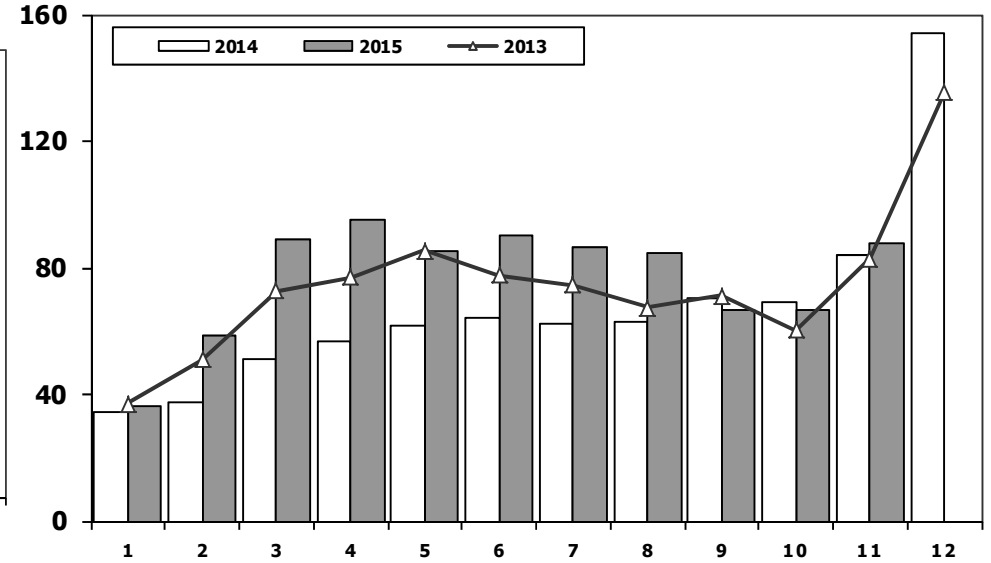




**Toplam Pazarın Analizi** (x1000)  
Total Market Analysis (x1000)



**Toplam Pazar** (x1000)  
Total Market (x1000)

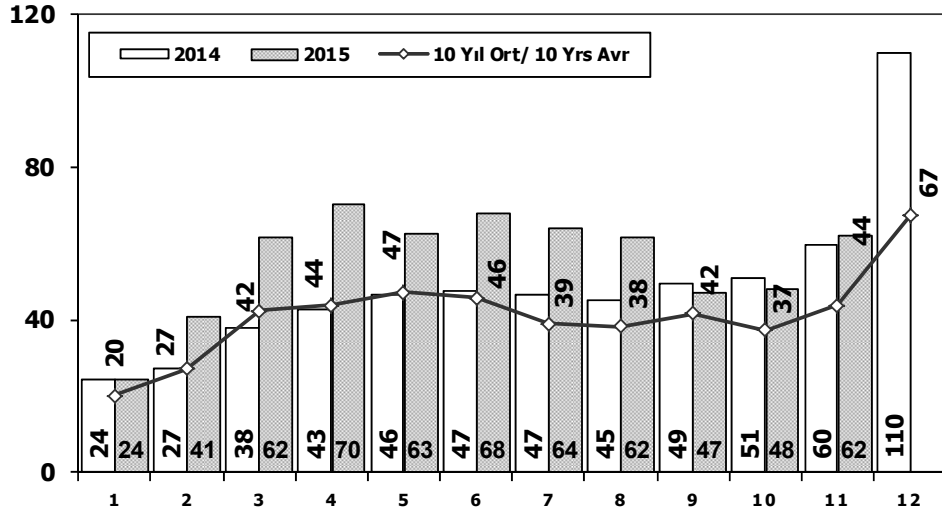


Aylar / Months	10 Yil Ort. 10 Yrs Avr. (x1000)	2015 (x1000)	%
1	31,7	36,6	15,3
2	42,3	58,5	38,5
3	64,3	89,1	38,6
4	65,4	95,4	45,9
5	70,5	85,1	20,8
6	67,9	90,5	33,3
7	58,3	86,6	48,6
8	58,7	84,7	44,3
9	64,1	66,6	3,9
10	56,1	66,5	18,5
11	65,5	88,0	34,4
<b>Total</b>	<b>644,8</b>	<b>847,7</b>	<b>31,5</b>

	1	2	3	4	5	6	7	8	9	10	11	12	11 Ay/Mo	Total
2005	22.687	38.291	64.502	60.873	71.383	64.379	63.847	68.647	66.580	60.791	65.719	110.838	647.699	758.537
2006	29.969	44.646	65.090	68.853	83.289	58.203	40.037	47.374	49.629	39.805	55.898	82.722	582.793	665.515
2007	24.950	31.702	45.488	45.633	51.255	51.661	50.117	54.171	50.078	56.058	67.017	106.076	528.130	634.206
2008	33.792	38.121	56.814	50.967	51.627	49.393	44.692	46.592	46.829	35.147	28.152	44.418	482.126	526.544
2009	20.631	22.846	56.531	54.426	64.887	63.102	30.246	37.092	83.403	22.117	29.202	91.386	484.483	575.869
2010	21.050	32.313	53.828	57.079	61.628	63.390	63.718	64.645	66.601	76.780	77.406	154.734	638.438	793.172
2011	47.658	62.348	83.333	82.071	85.093	85.863	65.364	61.378	63.643	72.640	67.195	134.281	776.586	910.867
2012	31.219	43.827	68.957	66.014	74.820	74.781	65.122	60.848	73.197	62.677	75.045	121.113	696.507	817.620
2013	37.140	50.931	72.688	77.015	85.421	77.771	74.726	67.383	71.037	60.399	83.017	135.596	757.528	893.124
2014	34.225	37.308	50.964	56.766	61.909	63.952	62.206	62.839	70.180	69.259	83.937	153.941	653.545	807.486
2015	36.579	58.532	89.121	95.431	85.144	90.462	86.622	84.683	66.623	66.518	88.005	0	847.720	847.720

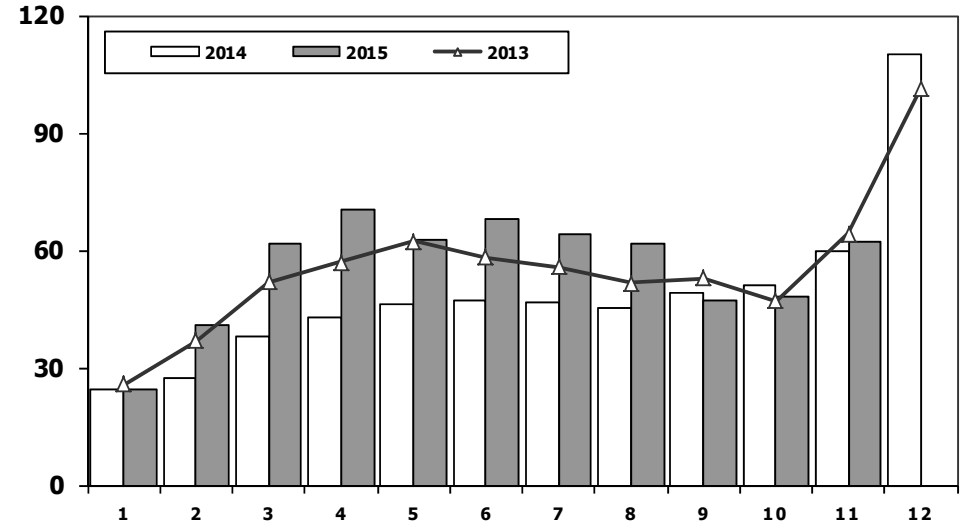
## Otomobil Pazarının Analizi (x1000)

### P.Cars Market Analysis (x1000)



## Otomobil Pazarı (x1000)

### P.Cars Market (x1000)



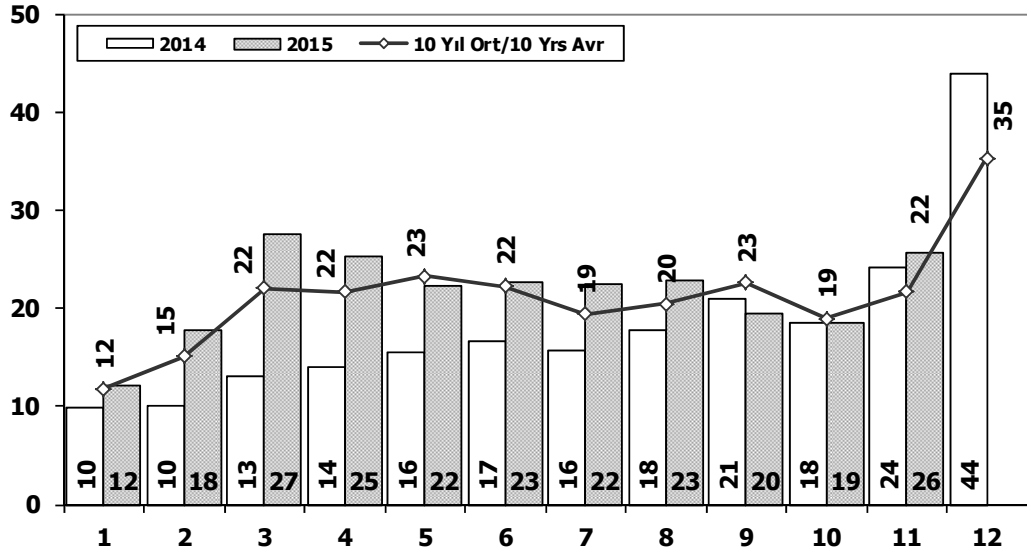
Aylar / Months	10 Yil Ort. 10 Yrs Avr. (x1000)	2015 (x1000)	%
1	20,0	24,5	22,7
2	27,1	40,8	50,4
3	42,3	61,7	45,9
4	43,8	70,2	60,3
5	47,2	62,9	33,2
6	45,6	67,8	48,7
7	38,9	64,2	65,1
8	38,3	61,8	61,3
9	41,5	47,1	13,3
10	37,2	48,0	28,9
11	43,9	62,4	42,3
<b>Total</b>	<b>425,8</b>	<b>611,3</b>	<b>43,6</b>

	1	2	3	4	5	6	7	8	9	10	11	12	11 Ay/Mo	Total
2005	11.595	21.012	38.129	36.206	38.480	40.900	38.969	38.648	36.410	34.960	37.841	65.447	373.150	438.597
2006	16.506	24.929	36.996	40.177	48.521	32.982	22.653	24.873	27.517	21.237	30.477	46.351	326.868	373.219
2007	13.186	17.212	24.336	25.204	29.067	30.126	28.246	28.469	27.662	32.569	39.643	61.745	295.720	357.465
2008	18.588	21.196	34.147	30.313	31.477	28.724	25.530	26.102	27.053	19.788	17.201	25.879	280.119	305.998
2009	13.173	14.492	40.622	36.202	44.188	41.019	16.637	22.537	52.162	13.828	17.781	57.178	312.641	369.819
2010	12.594	20.651	33.958	36.549	40.467	42.086	41.399	42.222	42.477	47.859	50.061	99.461	410.323	509.784
2011	29.868	39.004	54.023	53.835	56.302	56.714	43.518	38.875	39.964	47.508	44.951	88.957	504.562	593.519
2012	21.077	29.189	47.270	45.645	50.460	50.849	44.531	41.236	49.360	43.440	52.297	80.926	475.354	556.280
2013	25.835	36.814	51.785	56.999	62.383	58.290	55.712	51.611	52.925	46.985	64.117	101.199	563.456	664.655
2014	24.368	27.167	37.812	42.769	46.379	47.278	46.602	45.131	49.262	50.814	59.695	110.054	477.277	587.331
2015	24.498	40.817	61.676	70.211	62.878	67.766	64.218	61.753	47.088	47.954	62.397	0	611.256	611.256



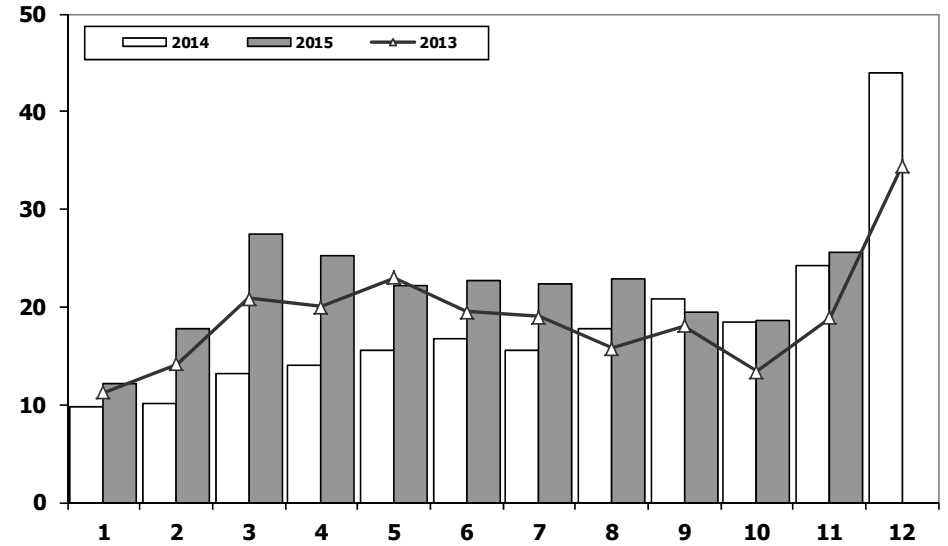
## Ticari Araç Pazarının Analizi (x1000)

### CV Market Analysis (x1000)



## Ticari Araç Pazarı (x1000)

### CV Total Market (Local + Imports) (x1000)



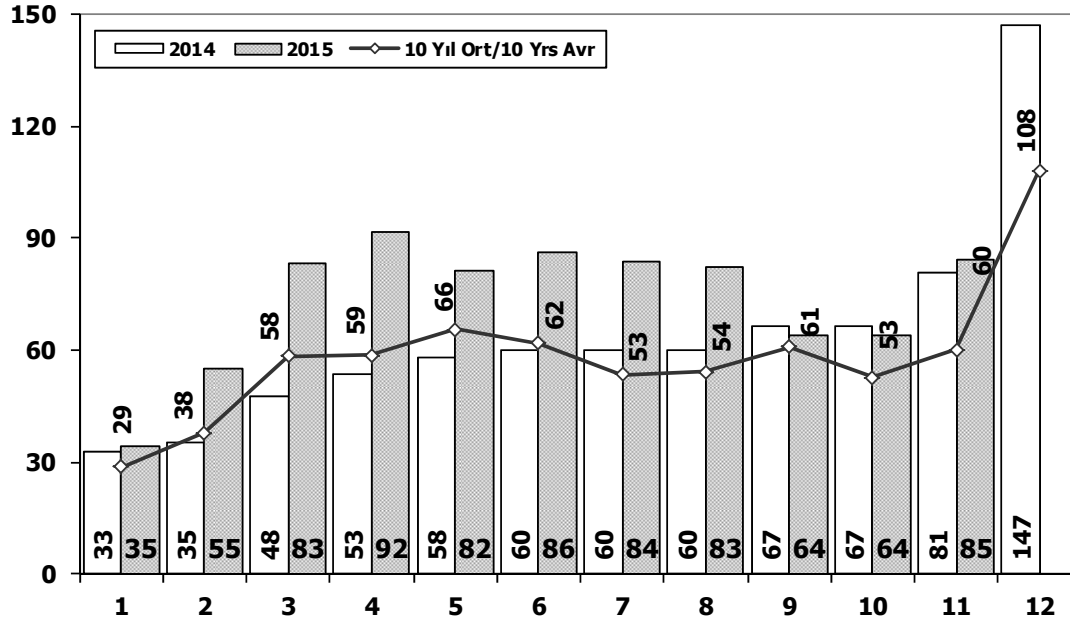
Aylar / Months	10 Yil Ort. 10 Yrs Avr. (x1000)	2015 (x1000)	%
1	11,8	12,1	2,8
2	15,1	17,7	17,2
3	22,0	27,4	24,6
4	21,6	25,2	16,6
5	23,3	22,3	-4,4
6	22,3	22,7	1,9
7	19,4	22,4	15,6
8	20,4	22,9	12,3
9	22,6	19,5	-13,5
10	18,9	18,6	-2,0
11	21,6	25,6	18,4
<b>Total</b>	<b>219,0</b>	<b>236,5</b>	<b>8,0</b>

	1	2	3	4	5	6	7	8	9	10	11	12	11 Ay/Mo	Total
2005	11.092	17.279	26.373	24.667	32.903	23.479	24.878	29.999	30.170	25.831	27.878	45.391	274.549	319.940
2006	13.463	19.717	28.094	28.676	34.768	25.221	17.384	22.501	22.112	18.568	25.421	36.371	255.925	292.296
2007	11.764	14.490	21.152	20.429	22.188	21.535	21.871	25.702	22.416	23.489	27.374	44.331	232.410	276.741
2008	15.204	16.925	22.667	20.654	20.150	20.669	19.162	20.490	19.776	15.359	10.951	18.539	202.007	220.546
2009	7.458	8.354	15.909	18.224	20.699	22.083	13.609	14.555	31.241	8.289	11.421	34.208	171.842	206.050
2010	8.456	11.662	19.870	20.530	21.161	21.304	22.319	22.423	24.124	28.921	27.345	55.273	228.115	283.388
2011	17.790	23.344	29.310	28.236	28.791	29.149	21.846	22.503	23.679	25.132	22.244	45.324	272.024	317.348
2012	10.142	14.638	21.687	20.369	24.360	23.932	20.591	19.612	23.837	19.237	22.748	40.187	221.153	261.340
2013	11.305	14.117	20.903	20.016	23.038	19.481	19.014	15.772	18.112	13.414	18.900	34.397	194.072	228.469
2014	9.857	10.141	13.152	13.997	15.530	16.674	15.604	17.708	20.918	18.445	24.242	43.887	176.268	220.155
2015	12.081	17.715	27.445	25.220	22.266	22.696	22.404	22.930	19.535	18.564	25.608	0	236.464	236.464



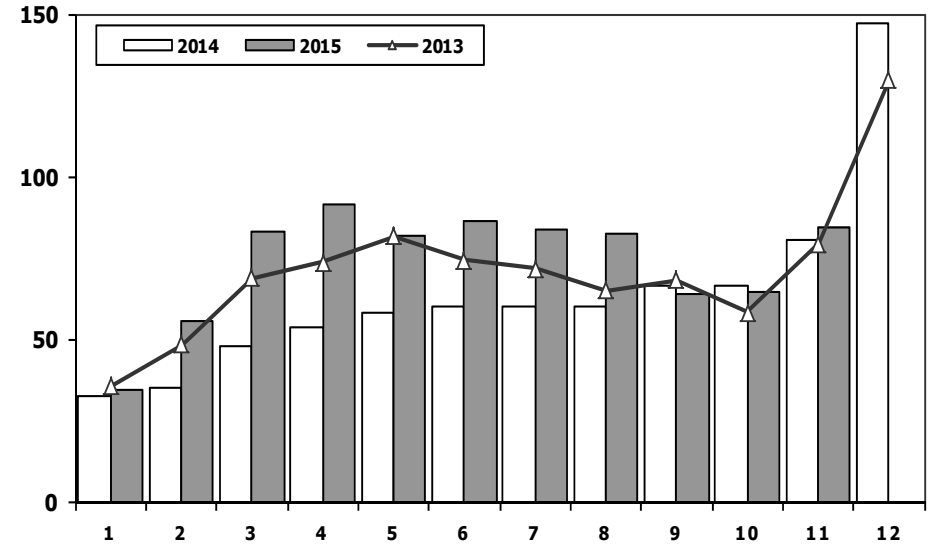
## Hafif Araç Pazarının Analizi (x1000)

### LV Market Analysis (x1000)



## Hafif Araç Pazarı (x1000)

### LV Total Market (Local + Imports) (x1000)



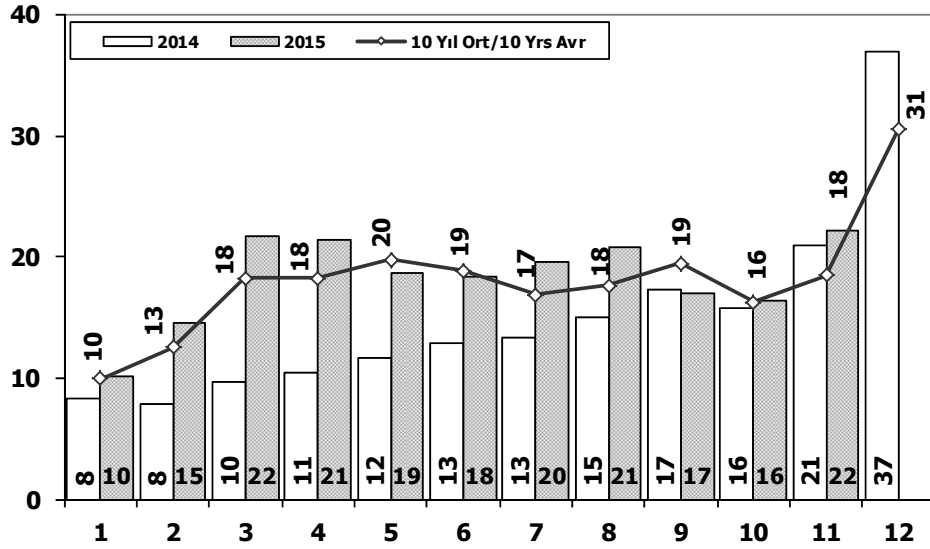
Aylar / Months	10 Yil Ort. 10 Yrs Avr. (x1000)	2015 (x1000)	%
1	28,6	34,6	21,2
2	37,7	55,3	46,6
3	58,3	83,3	42,9
4	58,6	91,6	56,3
5	65,6	81,5	24,3
6	61,9	86,2	39,2
7	53,5	83,8	56,7
8	54,1	82,6	52,6
9	60,8	64,0	5,3
10	52,7	64,3	21,9
11	60,0	84,6	41,0
<b>Total</b>	<b>591,8</b>	<b>811,8</b>	<b>37,2</b>

	1	2	3	4	5	6	7	8	9	10	11	12	11 Ay/Mo	Total
2005	20.747	35.766	60.707	56.844	67.357	60.796	61.015	64.011	61.954	56.638	61.364	103.209	607.199	710.408
2006	27.917	40.938	60.052	64.038	78.229	54.355	37.251	43.767	46.109	36.542	51.867	76.787	541.065	617.852
2007	23.117	29.184	41.890	42.366	47.938	48.674	47.490	50.558	46.581	52.725	63.313	100.926	493.836	594.762
2008	31.527	35.251	53.649	47.701	48.598	46.324	42.156	43.670	43.932	32.884	26.253	42.078	451.945	494.023
2009	19.606	21.742	55.111	52.640	63.191	61.067	28.845	35.609	81.397	21.033	27.962	88.923	468.203	557.126
2010	20.095	31.172	51.769	54.946	59.377	60.896	61.345	61.764	63.814	73.404	73.962	148.369	612.544	760.913
2011	44.892	58.663	78.403	77.695	80.646	81.573	63.044	58.406	60.129	69.421	63.657	127.910	736.529	864.439
2012	29.545	41.324	64.884	62.949	70.863	71.067	62.304	58.148	69.629	59.938	71.710	115.400	662.361	777.761
2013	35.523	48.307	68.774	73.575	81.468	74.096	71.596	65.043	67.963	58.014	79.301	129.718	723.660	853.378
2014	32.670	35.021	47.581	53.305	58.121	60.163	59.907	60.199	66.531	66.573	80.621	146.989	620.692	767.681
2015	34.615	55.331	83.302	91.602	81.542	86.158	83.836	82.577	64.025	64.255	84.601	0	811.844	811.844

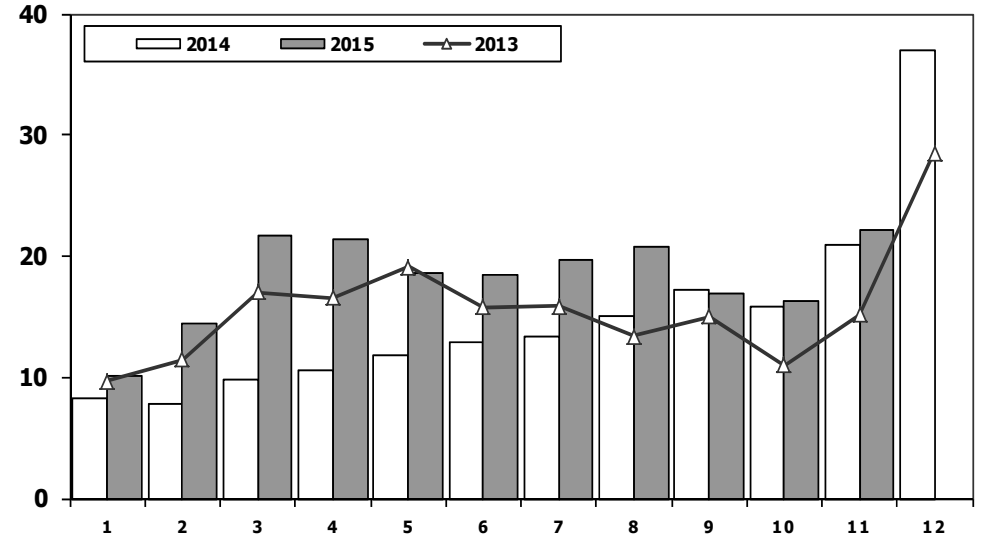




## Hafif Ticari Arac Pazarının Analizi (x1000) LCV Market Analysis (x1000)



## Hafif Ticari Arac Pazarı (x1000) LCV Total Market (Local + Imports) (x1000)

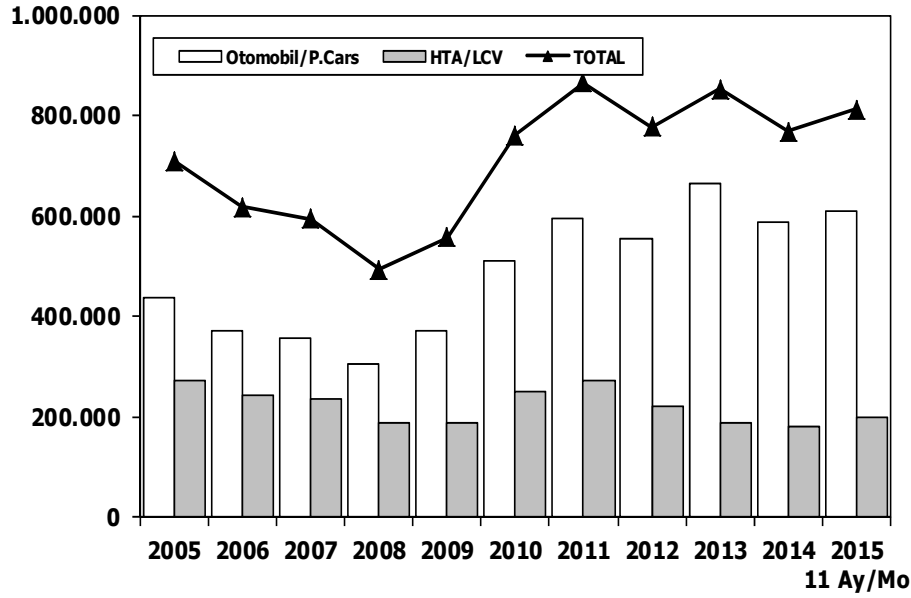


Aylar / Months	10 Yil Ort. 10 Yrs Avr. (x1000)	2015 (x1000)	%
1	10,0	10,1	1,4
2	12,5	14,5	15,7
3	18,3	21,6	18,3
4	18,3	21,4	16,9
5	19,8	18,7	-5,7
6	18,9	18,4	-2,4
7	16,9	19,6	16,3
8	17,7	20,8	17,7
9	19,5	16,9	-13,0
10	16,3	16,3	0,1
11	18,5	22,2	20,3
<b>Total</b>	<b>186,5</b>	<b>200,6</b>	<b>7,5</b>

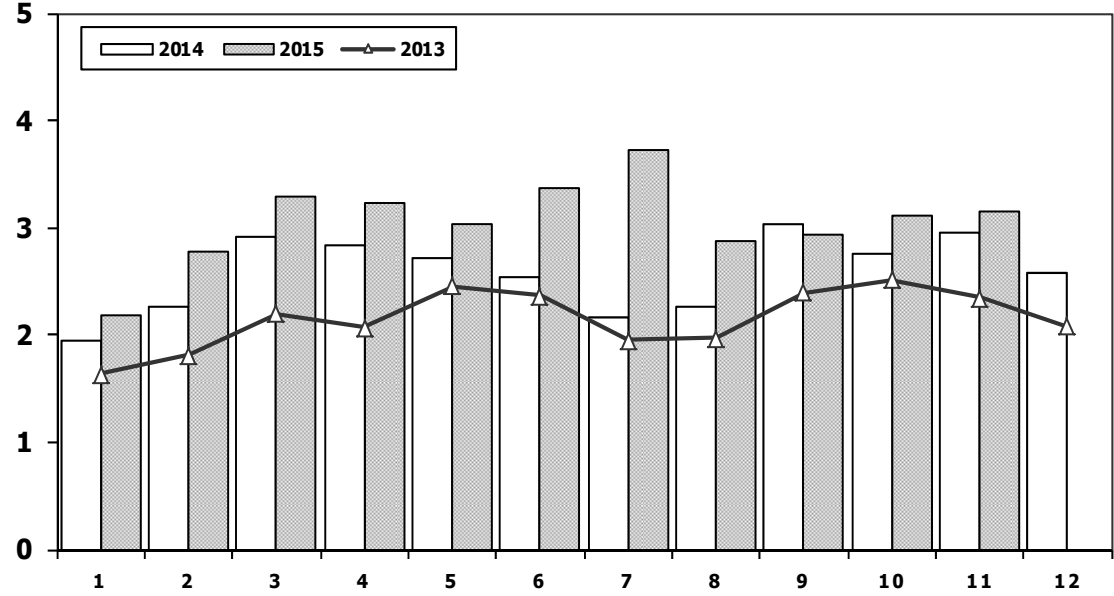
	1	2	3	4	5	6	7	8	9	10	11	12	11 Ay/Mo	Total
<b>2005</b>	9.152	14.754	22.578	20.638	28.877	19.896	22.046	25.363	25.544	21.678	23.523	37.762	234.049	271.811
<b>2006</b>	11.411	16.009	23.056	23.861	29.708	21.373	14.598	18.894	18.592	15.305	21.390	30.436	214.197	244.633
<b>2007</b>	9.931	11.972	17.554	17.162	18.871	18.548	19.244	22.089	18.919	20.156	23.670	39.181	198.116	237.297
<b>2008</b>	12.939	14.055	19.502	17.388	17.121	17.600	16.626	17.568	16.879	13.096	9.052	16.199	171.826	188.025
<b>2009</b>	6.433	7.250	14.489	16.438	19.003	20.048	12.208	13.072	29.235	7.205	10.181	31.745	155.562	187.307
<b>2010</b>	7.501	10.521	17.811	18.397	18.910	18.810	19.946	19.542	21.337	25.545	23.901	48.908	202.221	251.129
<b>2011</b>	15.024	19.659	24.380	23.860	24.344	24.859	19.526	19.531	20.165	21.913	18.706	38.953	231.967	270.920
<b>2012</b>	8.468	12.135	17.614	17.304	20.403	20.218	17.773	16.912	20.269	16.498	19.413	34.474	187.007	221.481
<b>2013</b>	9.688	11.493	16.989	16.576	19.085	15.806	15.884	13.432	15.038	11.029	15.184	28.519	160.204	188.723
<b>2014</b>	8.302	7.854	9.769	10.536	11.742	12.885	13.305	15.068	17.269	15.759	20.926	36.935	143.415	180.350
<b>2015</b>	10.117	14.514	21.626	21.391	18.664	18.392	19.618	20.824	16.937	16.301	22.204	0	200.588	200.588



**Hafif Arac Pazarı** (AYA < 3.5 Ton)  
Light Vehicle Market (GVW < 3.5 Ton)



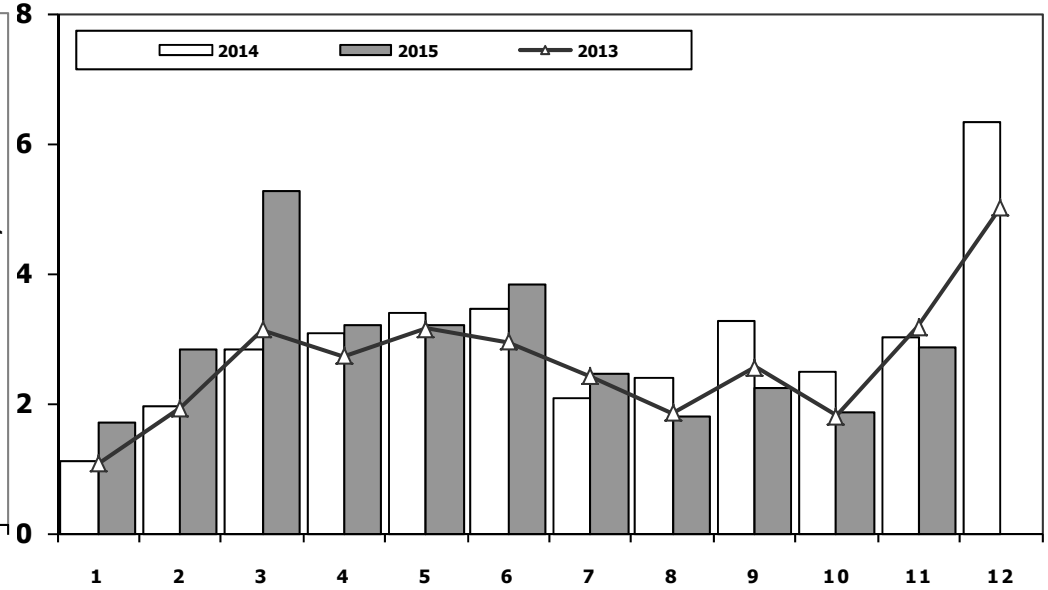
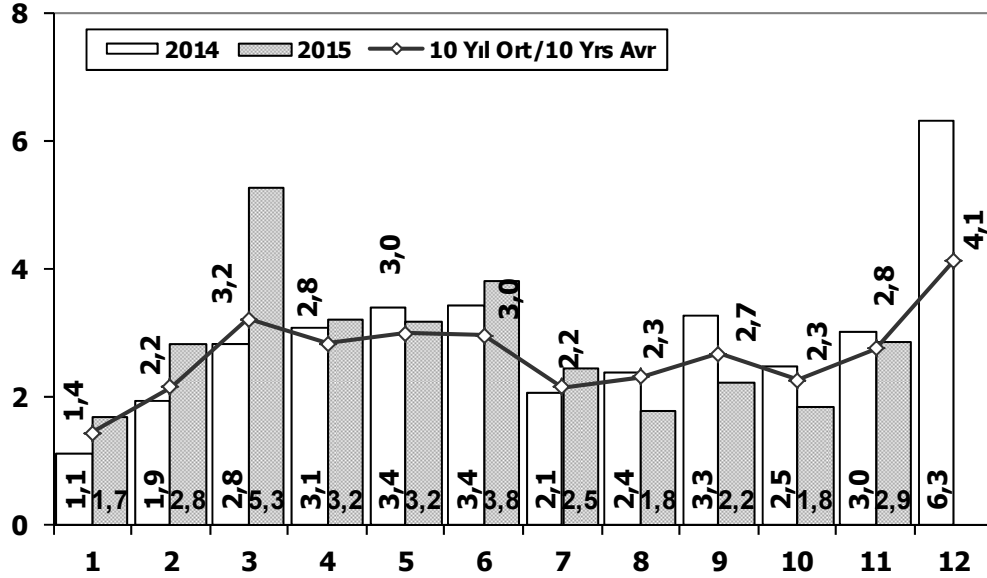
**Traktör Pazarı** (x1000)  
F.Tractor Market (x1000)



	2005	2006	2007	2008	2009	2010	2011	2012	2013	2014	2015	11 Ay/Mo	Total
Otomobil/P.Cars	438.597	373.219	357.465	305.998	369.819	509.784	593.519	556.280	664.655	587.331	611.256		
HTA/LCV	271.811	244.633	237.297	188.025	187.307	251.129	270.920	221.481	188.723	180.350	200.588		
TOTAL	710.408	617.852	594.762	494.023	557.126	760.913	864.439	777.761	853.378	767.681	811.844		
HTA/LCV (%)	38	40	40	38	34	33	31	28	22	23	25		

## Kamyon Pazarının Analizi (x1000) AYA > 5 Ton Truck Market Analysis (x1000) GVW > 5 Ton

## Kamyon Pazarı (x1000) AYA > 5 Ton Truck Market (x1000) GVW > 5 Ton



Aylar / Months	10 Yil Ort. 10 Yrs Avr. (x1000)	2015 (x100)	%
1	1,4	1,7	17,8
2	2,2	2,8	31,7
3	3,2	5,3	63,7
4	2,8	3,2	13,3
5	3,0	3,2	6,5
6	3,0	3,8	29,1
7	2,2	2,5	14,1
8	2,3	1,8	-22,2
9	2,7	2,2	-16,3
10	2,3	1,8	-18,6
11	2,8	2,9	3,7
<b>Total</b>	<b>27,8</b>	<b>31,3</b>	<b>12,5</b>

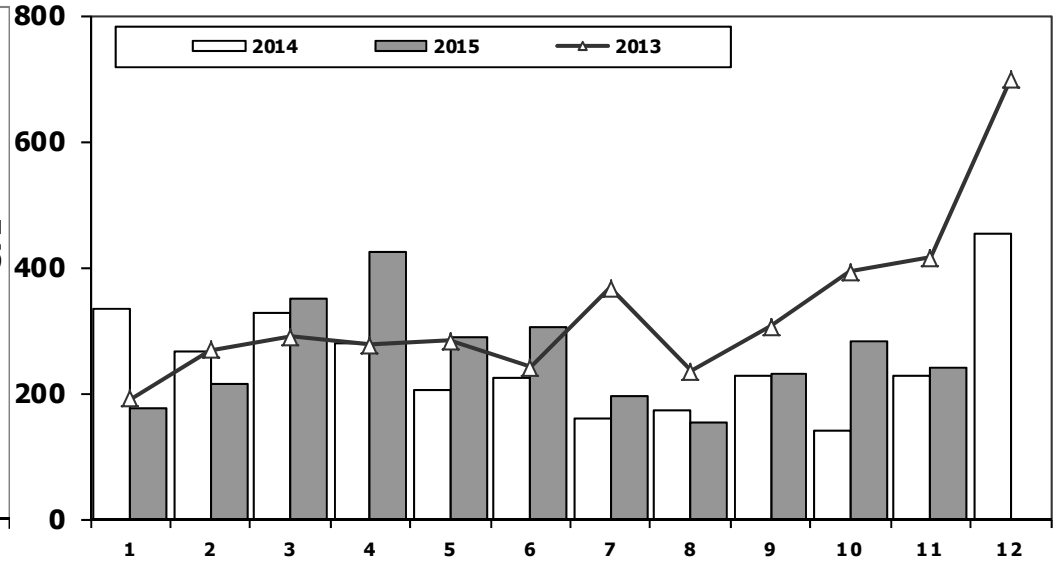
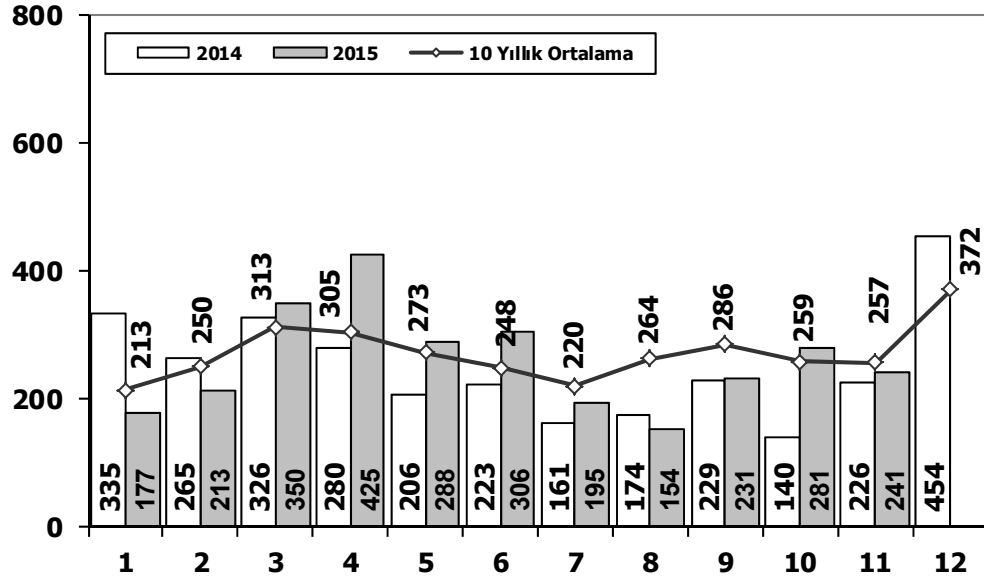
	1	2	3	4	5	6	7	8	9	10	11	12	11 Ay/Mo	Total
2005	1.693	2.186	3.288	3.484	3.413	3.147	2.504	4.028	4.043	3.708	3.918	6.570	35.412	41.982
2006	1.767	3.310	4.467	4.180	4.449	3.398	2.472	3.142	3.052	2.926	3.550	5.358	36.713	42.071
2007	1.554	2.055	3.065	2.940	2.865	2.613	2.372	3.145	2.988	2.886	3.258	4.444	29.741	34.185
2008	1.797	2.309	2.621	2.578	2.459	2.526	2.067	2.377	2.390	1.790	1.512	1.834	24.426	26.260
2009	771	759	1.034	1.342	1.355	1.651	1.156	1.205	1.780	866	981	2.015	12.900	14.915
2010	777	968	1.772	1.807	1.966	2.205	2.093	2.446	2.444	3.071	3.136	5.677	22.685	28.362
2011	2.552	3.292	4.418	3.754	3.803	3.749	1.996	2.478	3.081	2.774	3.108	5.787	35.005	40.792
2012	1.375	2.159	3.595	2.697	3.321	3.250	2.450	2.277	2.991	2.244	3.006	5.000	29.365	34.365
2013	1.077	1.931	3.127	2.720	3.145	2.951	2.411	1.845	2.554	1.801	3.173	5.025	26.735	31.760
2014	1.117	1.949	2.818	3.092	3.405	3.438	2.083	2.390	3.281	2.494	3.028	6.313	29.095	35.408
2015	1.708	2.840	5.270	3.208	3.189	3.823	2.460	1.798	2.245	1.848	2.864	0	31.253	31.253

## Midibüs Pazarının Analizi (7-9 mt / 25-35 Kişilik)

Midibus Market Analysis (7-9 mt / 25-35 Passengers)

## Midibüs Pazarı (7-9 mt / 25-35 Kişilik Midibüs)

Midibus Market (7-9 mt / 25-35 Passengers)

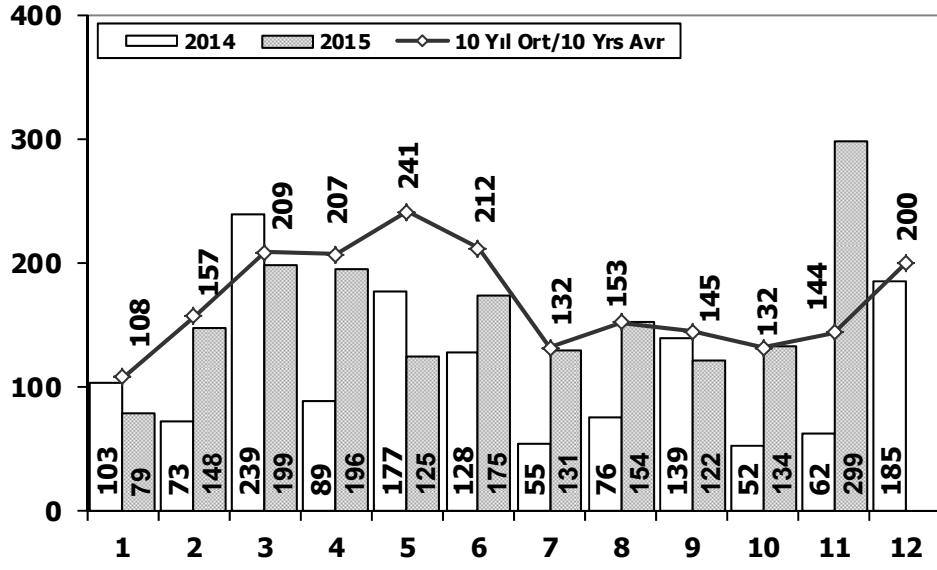


Aylar / Months	10 Yıl Ort. / 10 Yrs Avr.	2015	%
1	213	177	-17
2	250	213	-15
3	313	350	12
4	305	425	39
5	273	288	5
6	248	306	23
7	220	195	-11
8	264	154	-42
9	286	231	-19
10	259	281	8
11	257	241	-6
<b>Total</b>	<b>2.888</b>	<b>2.861</b>	<b>-1</b>

	1	2	3	4	5	6	7	8	9	10	11	12	11 Ay/Mo	Total
2005	182	258	432	393	439	269	252	459	436	329	328	574	3.777	4.351
2006	207	297	406	388	381	266	230	353	322	253	305	401	3.408	3.809
2007	207	272	404	238	302	283	164	365	399	279	283	465	3.196	3.661
2008	391	476	436	512	419	331	368	380	341	352	246	270	4.252	4.522
2009	154	124	160	220	174	198	160	175	168	143	206	323	1.882	2.205
2010	155	131	185	167	140	138	129	246	236	206	202	437	1.935	2.372
2011	138	195	294	316	280	258	211	305	301	276	260	270	2.834	3.104
2012	179	257	277	229	257	239	216	249	325	269	189	398	2.686	3.084
2013	191	268	289	276	283	241	367	235	305	392	415	697	3.262	3.959
2014	335	265	326	280	206	223	161	174	229	140	226	454	2.565	3.019
2015	177	213	350	425	288	306	195	154	231	281	241	0	2.861	2.861

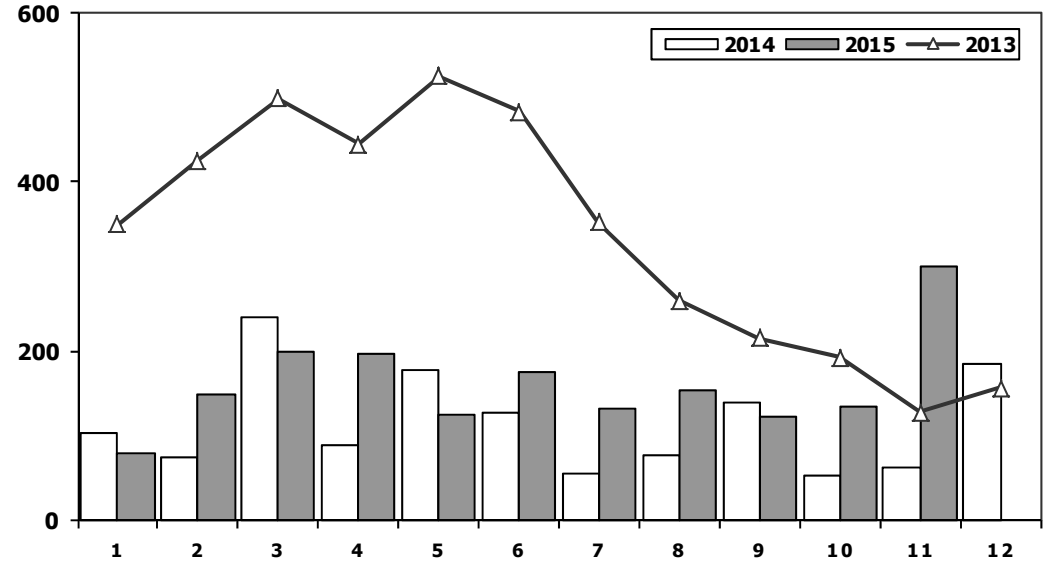
## Otobüs Pazarının Analizi

Bus Market Analysis



## Otobüs Pazarı

Bus Market

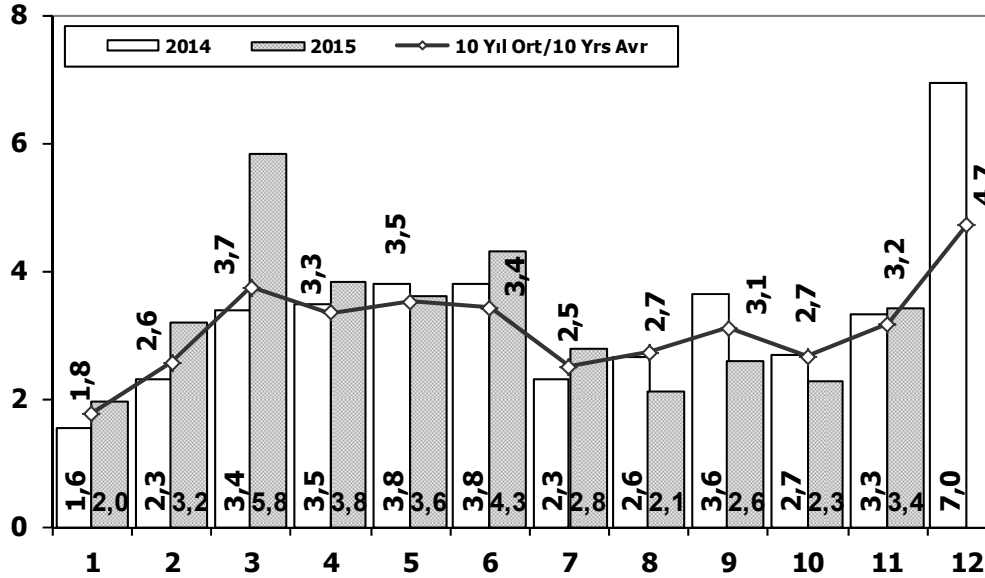


Aylar / Months	10 Yıl Ort. / 10 Yrs Avr.	2015	%
1	108	79	-27
2	157	148	-6
3	209	199	-5
4	207	196	-5
5	241	125	-48
6	212	175	-17
7	132	131	0
8	153	154	1
9	145	122	-16
10	132	134	2
11	144	299	108
<b>Total</b>	<b>1.838</b>	<b>1.762</b>	<b>-4</b>

	1	2	3	4	5	6	7	8	9	10	11	12	11 Ay/Mo	Total
2005	65	81	75	152	174	167	76	149	147	116	109	485	1.311	1.796
2006	78	101	165	247	230	184	84	112	146	84	176	176	1.607	1.783
2007	72	191	129	89	150	91	91	103	110	168	163	241	1.357	1.598
2008	77	85	108	176	151	212	101	165	166	121	141	236	1.503	1.739
2009	100	221	226	224	167	186	85	103	58	75	53	125	1.498	1.623
2010	23	42	102	159	145	151	151	189	107	99	106	251	1.274	1.525
2011	76	198	218	306	364	283	113	189	132	169	170	314	2.218	2.532
2012	120	87	201	139	379	225	152	174	252	226	140	315	2.095	2.410
2013	349	425	498	444	525	483	352	260	215	192	128	156	3.871	4.027
2014	103	73	239	89	177	128	55	76	139	52	62	185	1.193	1.378
2015	79	148	199	196	125	175	131	154	122	134	299	0	1.762	1.762

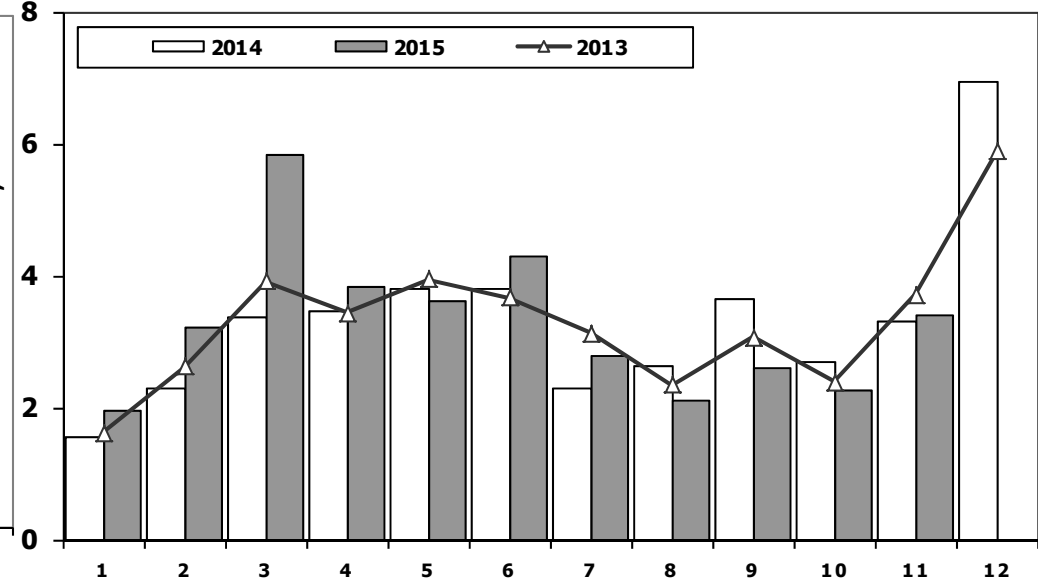
## Ağır Ticari Araç Pazarının Analizi (x1000)

### HCV Market Analysis (x1000)



## Ağır Ticari Araç Pazarı (x1000)

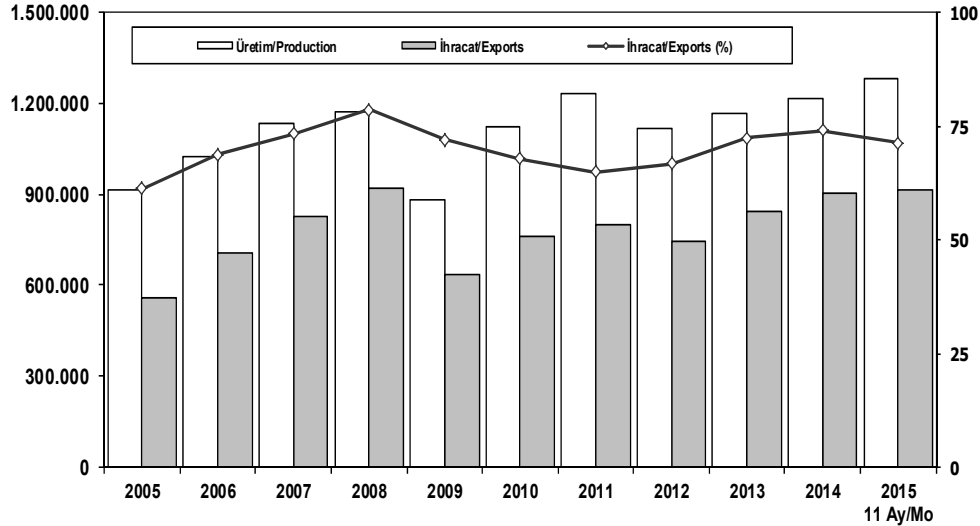
### HCV Market (x1000)



Aylar / Months	10 Yil Ort. 10 Yrs Avr. (x1000)	2015 (x1000)	%
1	1,8	2,0	10,9
2	2,6	3,2	24,8
3	3,7	5,8	55,6
4	3,3	3,8	14,5
5	3,5	3,6	2,6
6	3,4	4,3	25,8
7	2,5	2,8	11,1
8	2,7	2,1	-22,8
9	3,1	2,6	-16,5
10	2,7	2,3	-15,0
11	3,2	3,4	7,6
<b>Total</b>	<b>32,5</b>	<b>35,9</b>	<b>10,3</b>

	1	2	3	4	5	6	7	8	9	10	11	12	11 Ay/Mo	Total
<b>2005</b>	1.940	2.525	3.795	4.029	4.026	3.583	2.832	4.636	4.626	4.153	4.355	7.629	40.500	48.129
<b>2006</b>	2.052	3.708	5.038	4.815	5.060	3.848	2.786	3.607	3.520	3.263	4.031	5.935	41.728	47.663
<b>2007</b>	1.833	2.518	3.598	3.267	3.317	2.987	2.627	3.613	3.497	3.333	3.704	5.150	34.294	39.444
<b>2008</b>	2.265	2.870	3.165	3.266	3.029	3.069	2.536	2.922	2.897	2.263	1.899	2.340	30.181	32.521
<b>2009</b>	1.025	1.104	1.420	1.786	1.696	2.035	1.401	1.483	2.006	1.084	1.240	2.463	16.280	18.743
<b>2010</b>	955	1.141	2.059	2.133	2.251	2.494	2.373	2.881	2.787	3.376	3.444	6.365	25.894	32.259
<b>2011</b>	2.766	3.685	4.930	4.376	4.447	4.290	2.320	2.972	3.514	3.219	3.538	6.371	40.057	46.428
<b>2012</b>	1.674	2.503	4.073	3.065	3.957	3.714	2.818	2.700	3.568	2.739	3.335	5.713	34.146	39.859
<b>2013</b>	1.617	2.624	3.914	3.440	3.953	3.675	3.130	2.340	3.074	2.385	3.716	5.878	33.868	39.746
<b>2014</b>	1.555	2.287	3.383	3.461	3.788	3.789	2.299	2.640	3.649	2.686	3.316	6.952	32.853	39.805
<b>2015</b>	1.964	3.201	5.819	3.829	3.602	4.304	2.786	2.106	2.598	2.263	3.404	0	35.876	35.876

## İhracat/Üretim (2005-2015) Exports/Production (2005-2015)



## Taşıt Araçları İhracatı (2013-2015) Motor Vehicle Exports (2013-2015)

SEKTÖR/SECTOR	2013	2014	2014	2015	2015/2014 (%)
			11 Ay-11 Mo		
<b>OTOMOBİL/ P.Cars</b>	<b>484.504</b>	<b>581.993</b>	<b>529.633</b>	<b>544.561</b>	<b>3</b>
<b>TİCARİ ARAÇLAR / CV</b>	<b>343.967</b>	<b>303.187</b>	<b>273.239</b>	<b>355.435</b>	<b>30</b>
* Kamyonet/Pick-Up	300.765	269.995	243.966	311.354	28
* Minibüs/Minibus	34.664	26.458	23.398	37.355	60
* Kamyon/Truck	3.055	1.281	1.070	1.170	9
* Midibüs/Midibus	985	824	714	341	-52
* Otobüs/Bus	4.498	4.629	4.091	5.215	27
<b>TAŞIT ARAÇLARI /MV TOTAL</b>	<b>828.471</b>	<b>885.180</b>	<b>802.872</b>	<b>899.996</b>	<b>12</b>
<b>TRAKTÖR/F.TRACTOR</b>	<b>14.996</b>	<b>17.014</b>	<b>15.929</b>	<b>13.941</b>	<b>-12</b>
<b>TOTAL</b>	<b>843.467</b>	<b>902.194</b>	<b>818.801</b>	<b>913.937</b>	<b>12</b>

	2005	2006	2007	2008	2009	2010	2011	2012	2013	2014	2015 11 Ay/Mo
Üretim/Production	916.062	1.026.427	1.132.951	1.171.917	884.466	1.124.982	1.234.637	1.115.233	1.166.043	1.218.848	1.280.862
İhracat/Exports	561.078	706.402	829.879	920.763	637.855	763.670	801.112	745.354	843.467	902.194	913.937
İhracat/Exports (%)	61	69	73	79	72	68	65	67	72	74	71

## Otomotiv Ana ve Yan Sanayii İhracatı (ABD \$)

CBU and CKD Exports - \$

Sektör / Sector	2012	2013	2014	2014 Ocak-Kasım / January-November	2015 Ocak-Kasım / January-November	2015/2014 (%)
<b>Toplam Yan Sanayi/Total Component Industry</b>	<b>8.215.636.677</b>	<b>9.065.017.539</b>	<b>9.508.776.381</b>	<b>8.811.724.622</b>	<b>7.966.551.703</b>	<b>-10</b>
İç ve Dış Lastik / Tyres	1.199.566.307,01	1.130.005.891,78	1.126.854.271,17	1.062.347.123	896.085.780	-16
Emniyet Camı / Safety Glasses	120.615.917,59	135.230.309,67	143.215.038,82	132.525.709	114.712.956	-13
Motor (Engine)	272.085.582,31	319.294.885,46	171.893.752,32	158.680.467	203.794.481	28
Akümülatör / Batteries	249.831.846,25	306.451.449,47	289.327.112,33	259.645.580	199.427.954	-23
Diğer Aksam ve Parça / Spare Parts&Components	6.373.537.023,45	7.174.035.002,35	7.777.486.206,11	7.198.525.743	6.552.530.532	-9
<b>Toplam Ana Sanayi/Total Vehicle Industry</b>	<b>11.100.115.134</b>	<b>12.491.591.365</b>	<b>13.259.820.003</b>	<b>12.108.934.050</b>	<b>11.787.184.354</b>	<b>-3</b>
Otobüs / Bus	855.424.303,62	937.790.962,87	985.983.007,01	880.195.130	932.255.606	6
Midibüs-Minibüs / Minibus- Minibus	161.806.275,12	147.769.644,17	97.685.509,12	82.791.188	118.910.756	44
Otomobil (P. Cars)	6.068.045.119,19	6.855.475.589,83	7.258.450.326,62	6.671.073.114	6.264.362.543	-6
Kamyon-Kamyonet/HCV-LCV	3.433.310.998,81	3.918.798.755,31	4.201.841.460,59	3.831.565.043	3.859.186.330	1
Çekici/Truck-Tractor	195.093.508,21	218.385.731,69	252.414.199,17	222.422.948	223.342.503	0
Römork ve Yarı Römork/Trailer-Semi Trailer	71.336.634,88	77.907.406,95	38.396.524,81	35.517.900	41.019.532	15
Tarım Traktörü/Farm Tractor	315.098.293,75	335.463.274,61	425.048.976,02	385.368.727	348.107.084	-10
<b>Toplam/Total</b>	<b>19.315.751.810</b>	<b>21.556.608.904</b>	<b>22.768.596.384</b>	<b>20.920.658.672</b>	<b>19.753.736.057</b>	<b>-6</b>

Kaynak: Otomotiv Endüstrisi İhracatçıları Birliği



**Firma Bazında İhracat (Adet)**  
Export Of member Companies (Unit)

FİRMALAR Companies	2013	2014	Ocak-Kasım 11 Months	
			2014	2015
OYAK RENAULT	266.508	257.992	234.376	242.445
FORD OTOSAN	208.722	187.921	169.067	230.161
HYUNDAI ASSAN	85.500	179.793	161.720	184.989
TOFAŞ	160.309	142.234	129.324	158.565
TOYOTA	86.908	109.517	101.570	75.212
TÜRK TRAKTÖR	14.402	15.866	14.781	13.229
M. BENZ TÜRK	5.331	3.438	3.053	3.821
HONDA TÜRKİYE	2.121	1.560	1.470	2.100
MAN TÜRKİYE	898	937	864	1.403
HATTAT TARIM	594	1.148	1.148	712
OTOKAR	620	580	473	622
TEMSA GLOBAL	663	423	312	380
A.I.O.S.	770	748	613	240
KARSAN	10.120	37	30	58
BMC	1	0	0	0
<b>GENEL TOPLAM</b>	<b>843.467</b>	<b>902.194</b>	<b>818.801</b>	<b>913.937</b>

Kaynak: OSD

**Sektör Bazında İhracat (\$)**  
Exports on Sectorial Basis

SEKTÖRLER	KASIM				OCAK-KASIM			
	2014	2015	Değişim ('15/'14)	Pay(15) (%)	2014	2015	Değişim ('15/'14)	Pay(15) (%)
Otomotiv Endüstrisi	1.839.051	1.920.563	4	17	20.467.471	19.316.886	-6	15
Hazırgiyim ve Konfeksiyon	1.504.078	1.409.702	-6	12	17.362.989	15.582.901	-10	12
Kimyevi Maddeler ve Mamulleri	1.492.112	1.301.024	-13	11	16.370.638	14.145.216	-14	11
Elektrik Elektronik ve Hizmet	1.003.276	938.358	-6	8	10.964.127	9.562.625	-13	7
Çelik	892.212	662.481	-26	6	12.021.280	9.128.073	-24	7
Tekstil ve Hammaddeleri	731.786	662.740	-9	6	8.211.781	7.330.513	-11	6
Demir ve Demir Dışı Metaller	566.707	506.143	-11	4	6.516.116	5.728.269	-12	4
Hububat, Bakliyat, Yağlı Tohumlar ve Mam.	600.902	609.495	1	5	6.063.891	5.589.475	-8	4
Makine ve Aksamları	470.827	489.265	4	4	5.490.183	5.027.041	-8	4
Mobilya, Kağıt ve Orman Ürünleri	379.159	343.303	-9	3	4.107.403	3.730.143	-9	3
<b>TOPLAM (TİM+TÜİK*)</b>	<b>12.783.381</b>	<b>11.436.954</b>	<b>-11</b>	<b>100</b>	<b>144.340.886</b>	<b>131.942.324</b>	<b>-9</b>	<b>100</b>

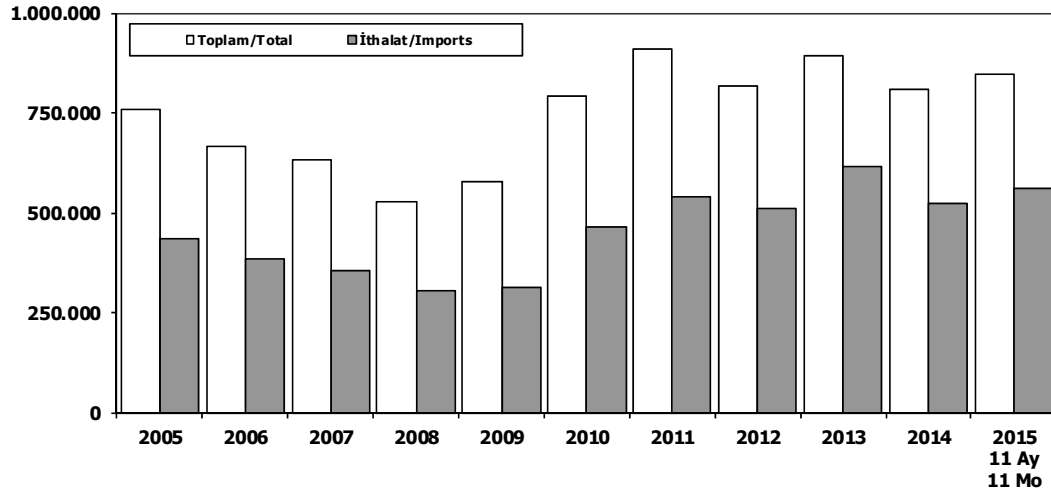
Kaynak: TİM

**First 3 Sectors:**

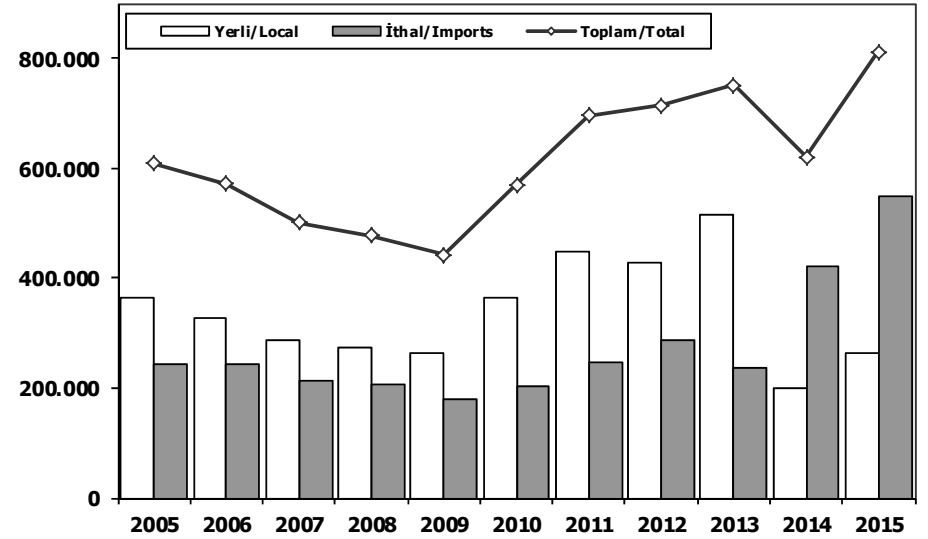
- 1- Transport Vehicle and Component Industry
- 2- Ready Wear and Confection
- 3- Chemical Articles and Products



## Toplam Pazar (Otomobil+T.Araç) Total Market (P.Cars+C.V)



## Hafif Araçlar Pazarı (2005-2015 Ocak-Kasım) LV Market (2005-2015 January-November)

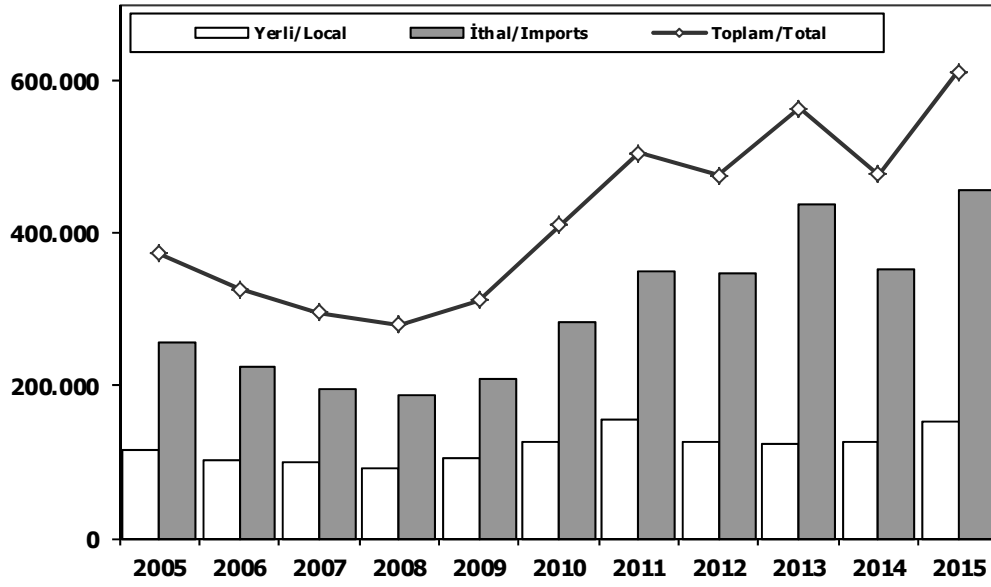


	2005	2006	2007	2008	2009	2010	2011	2012	2013	2014	2014 11 Ay 11 Mo	2015 11 Ay 11 Mo
Toplam/Total	758.537	665.515	634.206	526.544	575.869	793.172	910.867	817.620	893.124	807.486	653.545	847.720
İthalat/Imports	436.033	382.460	355.752	306.087	313.921	465.408	538.532	511.694	615.609	524.641	430.700	559.144
İthalat/Imports (%)	57	57	56	58	55	59	59	63	69	65	66	66

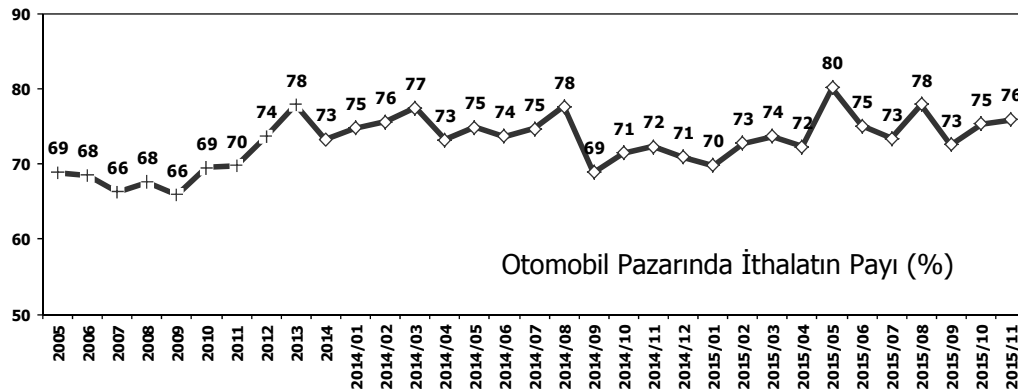
	2005	2006	2007	2008	2009	2010	2011	2012	2013	2014	2015
Yerli/Local	363.993	328.128	288.516	272.367	263.694	365.581	448.778	426.717	515.462	200.483	264.365
İthal/Imports	244.357	243.206	212.937	205.320	179.578	204.509	246.963	287.751	235.644	420.209	547.479
Toplam/Total	608.350	571.334	501.453	477.687	443.272	570.090	695.741	714.468	751.106	620.692	811.844
İthalat/Imports (%)	40	43	42	43	41	36	35	40	31	68	67

## Otomobil Pazarı (2005-2015 Ocak-Kasım)

### P.Cars Market (2005-2015 January-November)



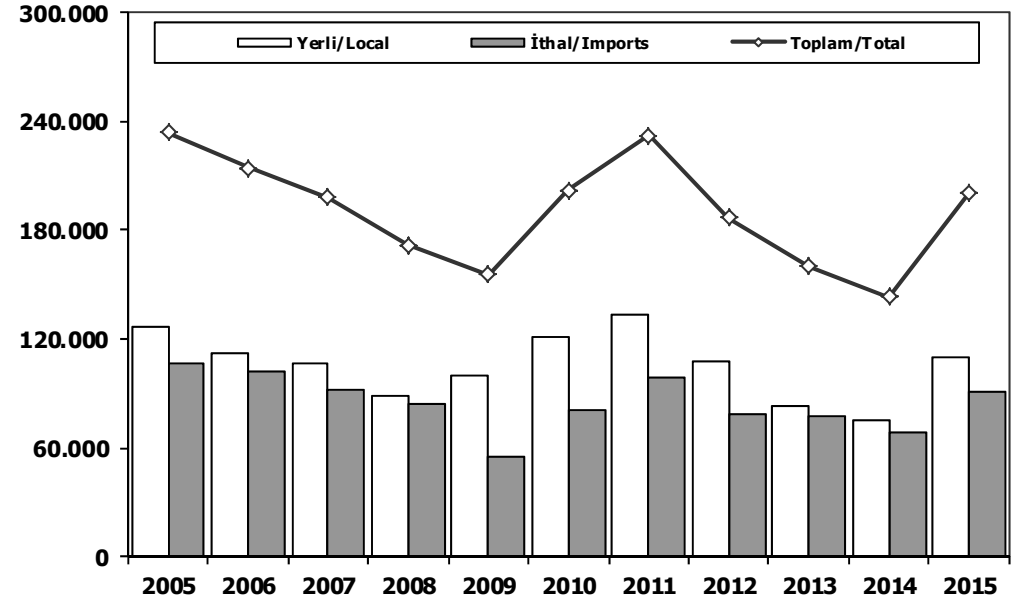
	2005	2006	2007	2008	2009	2010	2011	2012	2013	2014	2015
Yerli/Local	116.238	101.288	98.765	91.347	104.322	126.084	154.660	127.535	124.906	125.260	154.267
İthal/Imports	256.912	225.580	196.955	188.772	208.319	284.239	349.902	347.819	438.550	352.017	456.989
Toplam/Total	373.150	326.868	295.720	280.119	312.641	410.323	504.562	475.354	563.456	477.277	611.256
İthalat/Imports (%)	69	69	67	67	67	69	69	73	78	74	75



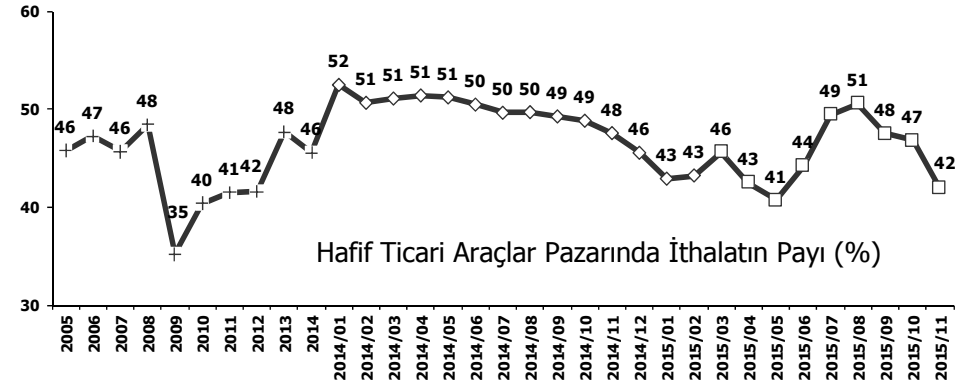
Otomobil Pazarında İthalatın Payı (%)

## Hafif Ticari Araçlar Pazarı (2005-2015 Ocak-Kasım)

### Light Commercial Vehicle Market (2005-2015 January-November)

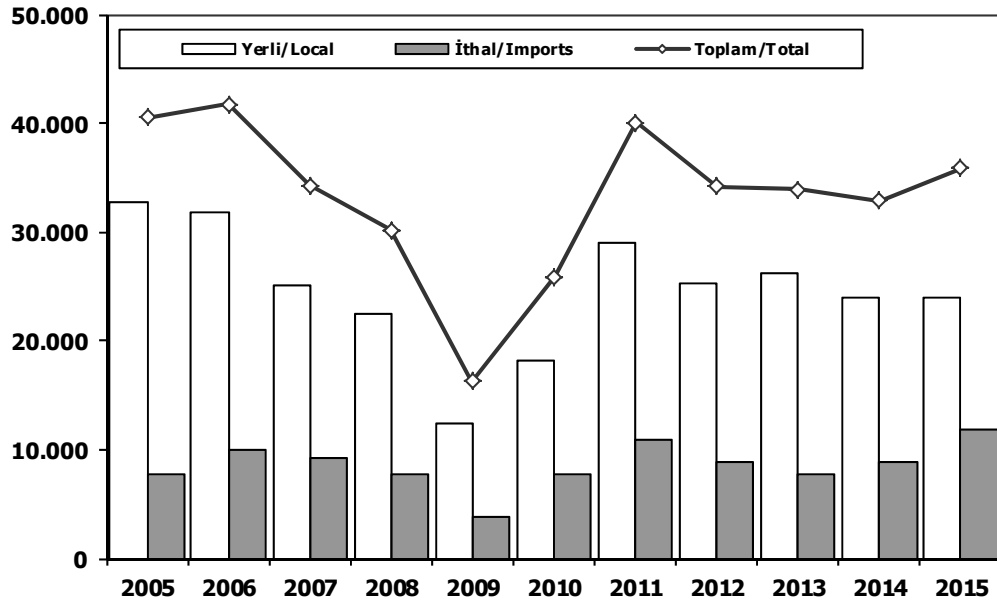


	2005	2006	2007	2008	2009	2010	2011	2012	2013	2014	2015
Yerli/Local	126.968	111.649	106.555	88.231	100.187	120.879	133.091	108.109	83.292	75.223	110.098
İthal/Imports	107.081	102.548	91.561	83.595	55.375	81.342	98.876	78.898	76.912	68.192	90.490
Toplam/Total	234.049	214.197	198.116	171.826	155.562	202.221	231.967	187.007	160.204	143.415	200.588
İthalat/Imports (%)	46	48	46	49	36	40	43	42	48	48	45



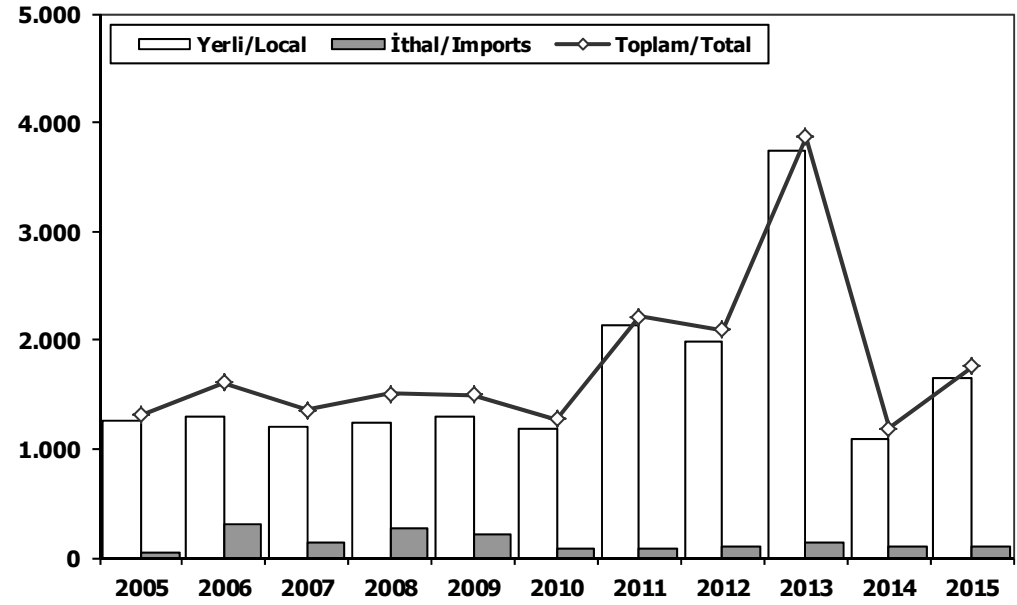
Hafif Ticari Araçlar Pazarında İthalatın Payı (%)

## Ağır Ticari Araçlar Pazarı (2005-2015 Ocak-Kasım) HCV Market (2005-2015 January-November)



	2005	2006	2007	2008	2009	2010	2011	2012	2013	2014	2015
Yerli/Local	32.680	31.760	25.077	22.518	12.418	18.186	29.068	25.211	26.151	22.362	24.211
İthal/Imports	7.820	9.968	9.217	7.663	3.862	7.708	10.989	8.935	7.717	10.491	11.665
Toplam/Total	40.500	41.728	34.294	30.181	16.280	25.894	40.057	34.146	33.868	32.853	35.876
İthalat/Imports (%)	19	24	27	25	24	30	27	26	23	32	33

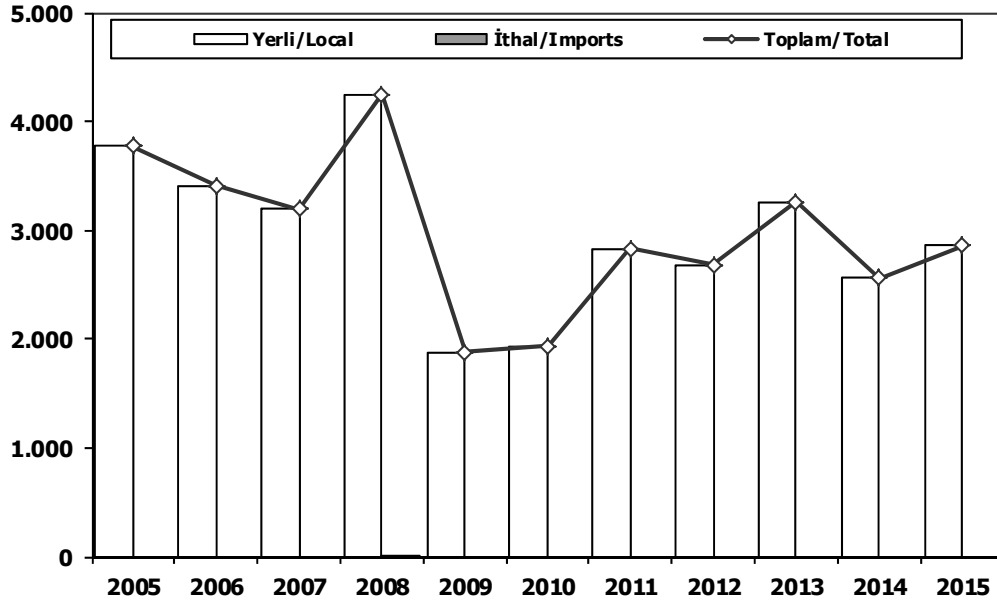
## Otobüs Pazarı (2005-2015 Ocak-Kasım) Bus Market (2005-2015 January-November)



	2005	2006	2007	2008	2009	2010	2011	2012	2013	2014	2015
Yerli/Local	1.256	1.295	1.209	1.238	1.292	1.188	2.133	1.986	3.736	1.083	1.652
İthal/Imports	55	312	148	265	206	86	85	109	135	110	110
Toplam/Total	1.311	1.607	1.357	1.503	1.498	1.274	2.218	2.095	3.871	1.193	1.762
İthalat/Imports (%)	4	19	11	18	14	7	4	5	3	9	6

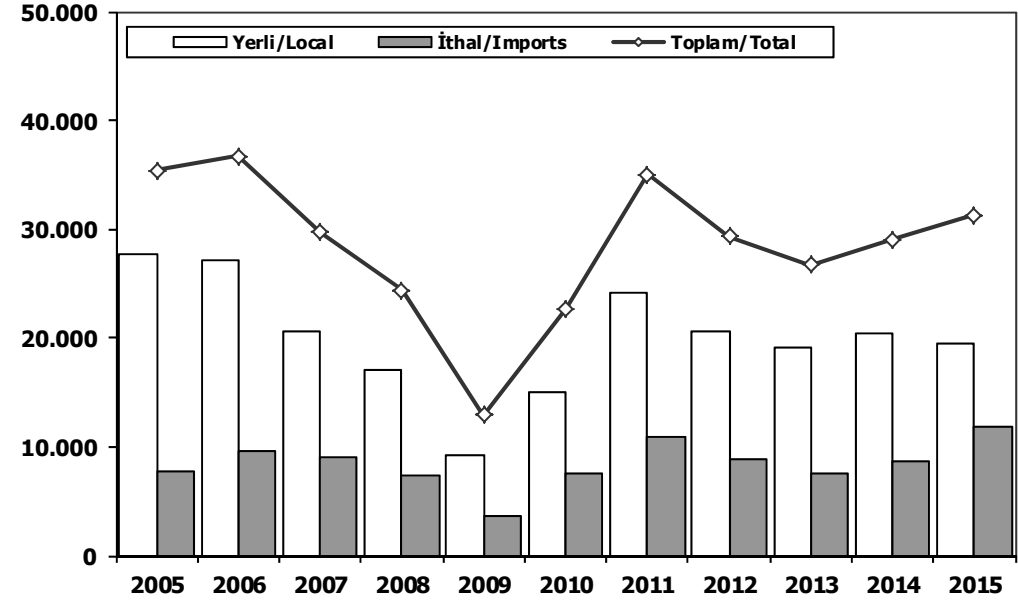
## Midibüs Pazarı (2005-2015 Ocak-Kasım) (7-9 mt / 25-35 Kişilik)

Midibus (2005-2015 January-November) Market (7-9 mt / 25-35 Passengers)



## Kamyon Pazarı (2005-2015 Ocak-Kasım)

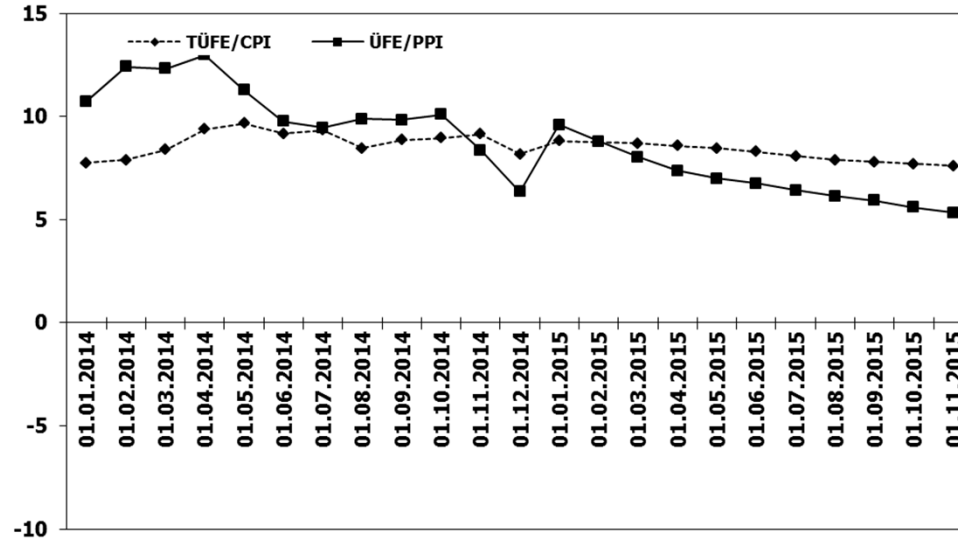
Truck Market (2005-2015 January-November)



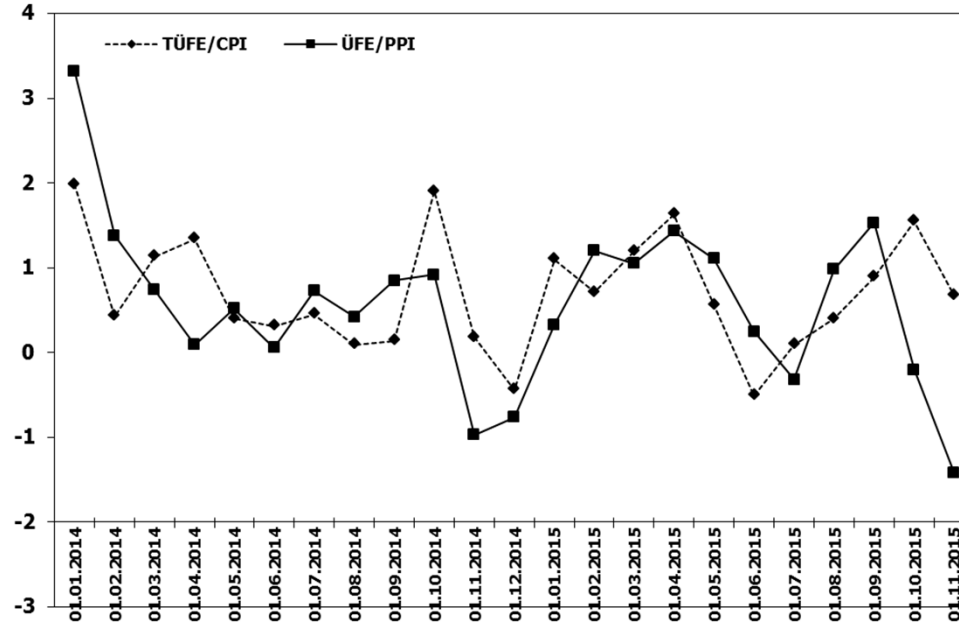
	2005	2006	2007	2008	2009	2010	2011	2012	2013	2014	2015
Yerli/Local	3.777	3.408	3.196	4.241	1.882	1.935	2.834	2.686	3.262	2.565	2.861
İthal/Imports	0	0	0	11	0	0	0	0	0	0	0
Toplam/Total	3.777	3.408	3.196	4.252	1.882	1.935	2.834	2.686	3.262	2.565	2.861
İthalat/Imports (%)	0	0	0	0	0	0	0	0	0	0	0

	2005	2006	2007	2008	2009	2010	2011	2012	2013	2014	2015
Yerli/Local	27.647	27.057	20.672	17.039	9.244	15.063	24.101	20.539	19.153	18.714	19.698
İthal/Imports	7.765	9.656	9.069	7.387	3.656	7.622	10.904	8.826	7.582	10.381	11.555
Toplam/Total	35.412	36.713	29.741	24.426	12.900	22.685	35.005	29.365	26.735	29.095	31.253
İthalat/Imports (%)	22	26	30	30	28	34	31	30	28	36	37

## TÜFE ve ÜFE'nin Yıllık Değişimi (%) CPI and PPI Yearly Changes (%)



## TÜFE ve ÜFE'nin Aylık Değişimi (%) CPI and PPI Monthly Changes (%)





## 2015 Yılı İthal Hafif Araç Satışları 2015 Light Vehicles Import Sales

2015 YILI İTHAL OTOMOBİL SATIŞLARI / P.Cars Import 2015

2014 TOPLAMI 2014 Total	1	2	3	4	5	6	7	8	9	10	11	12	2015 TOPLAMI 2015 Total	
VOLKSWAGEN	84.646	4.491	6.942	9.711	10.487	10.793	8.922	10.620	10.473	7.023	7.254	8.395	95.111	
FORD	35.682	1.101	2.782	3.636	4.681	4.678	4.645	3.987	4.081	2.659	2.500	2.862	37.612	
OPEL	39.255	952	2.239	3.964	4.753	3.943	4.460	3.378	4.069	2.438	2.756	4.961	37.913	
DACIA	27.897	1.709	2.289	2.968	2.872	2.918	3.661	3.362	3.552	2.198	2.339	3.081	30.949	
RENAULT	25.572	653	1.309	2.874	1.927	3.566	4.002	2.533	2.533	1.795	3.217	2.692	27.101	
B.M.W	26.174	1.219	1.536	2.369	2.717	2.896	2.652	3.066	2.881	1.614	2.642	3.249	26.841	
MERCEDES BENZ	23.100	417	1.384	2.200	2.135	2.101	3.558	3.283	3.206	2.585	2.230	2.403	25.502	
NISSAN	19.422	949	1.372	1.859	2.304	2.402	2.305	2.307	2.209	1.851	1.853	2.404	21.815	
PEUGEOT	17.026	846	1.110	2.039	2.635	2.739	2.086	1.973	1.848	1.269	1.048	1.793	19.186	
HYUNDAI	21.685	784	1.011	1.884	2.259	2.392	2.423	1.676	2.175	2.077	2.039	2.765	21.485	
SKODA	14.537	515	1.568	2.120	2.355	2.162	2.086	1.803	1.709	1.202	1.334	1.776	18.630	
AUDI	17.809	610	1.103	1.685	2.006	1.738	1.604	1.609	1.603	1.605	1.076	1.810	16.449	
CITROEN	14.389	683	941	1.522	2.077	1.406	1.810	1.388	1.658	915	472	1.441	14.313	
SEAT	12.697	164	1.103	1.496	1.852	1.740	1.768	1.679	1.586	1.039	967	1.435	14.829	
KIA	11.017	330	676	1.183	1.245	1.120	1.185	958	994	1.027	967	1.926	11.611	
TOYOTA	10.146	327	535	1.070	1.547	1.006	757	916	997	510	900	1.058	9.623	
VOLVO	6.060	295	290	657	751	856	701	453	452	440	396	648	5.939	
FIAT	6.179	248	377	481	617	382	520	435	478	353	291	382	4.564	
JEEP	1.960	239	281	308	383	268	325	264	253	148	118	358	2.945	
HONDA	3.269	98	241	273	152	193	211	422	569	441	785	700	4.085	
SUBARU	1.402	65	40	261	176	144	140	130	143	130	141	127	1.497	
MINI (İngiliz)	1.071	21	47	139	136	143	135	177	120	124	136	204	1.382	
LAND ROVER	1.207	31	87	240	94	132	148	66	79	100	140	241	1.358	
MITSUBISHI	1.159	64	64	92	149	105	119	131	134	97	75	148	1.178	
MAZDA	1.291	27	80	49	87	130	181	157	144	263	190	147	1.455	
ALFA ROMEO	967	34	59	56	76	134	79	46	60	34	36	78	692	
SSANGYONG	531	44	21	31	29	49	163	94	65	25	16	34	571	
PROTON	707	55	40	67	70	84	70	50	25	10	10	9	490	
PORSCHE	588	45	48	53	47	55	34	46	73	71	65	109	646	
CHERY	325	26	38	46	39	35	32	29	26	26	35	31	363	
JAGUAR	52	0	25	50	7	6	8	31	17	32	51	57	284	
TATA	126	21	24	21	19	23	19	3	3	17	7	11	168	
SUZUKI	958	27	17	20	28	14	2	6	13	13	12	8	160	
SMART	76	4	3	10	11	5	7	4	36	5	0	2	87	
MASERATI	83	2	2	3	9	9	7	5	4	6	3	6	56	
INFINITI	6	1	1	1	0	10	7	8	1	1	6	2	38	
GEELY	95	4	7	3	6	3	1	0	1	0	0	0	25	
BENTLEY	21	0	4	1	0	3	1	1	1	0	0	3	14	
LAMBORGHINI	2	1	1	2	1	0	1	0	0	0	0	0	6	
FERRARI	11	0	0	1	2	2	0	0	1	2	1	1	10	
LEXUS	0	0	0	0	0	0	0	0	3	0	0	1	4	
LANCIA	210	0	2	0	0	0	0	0	0	0	0	0	2	
CHEVROLET	572	0	0	0	0	0	0	0	0	0	0	0	0	
<b>TOPLAM</b>	<b>429.982</b>	<b>17.102</b>	<b>29.699</b>	<b>45.445</b>	<b>50.741</b>	<b>50.385</b>	<b>50.835</b>	<b>47.096</b>	<b>48.075</b>	<b>34.145</b>	<b>36.108</b>	<b>47.358</b>	<b>0</b>	<b>456.989</b>

2015 YILI İTHAL HAFİF TİCARİ ARAÇ SATIŞLARI / Light Commercial Vehicles Import 2015

2014 TOPLAMI 2014 Total	1	2	3	4	5	6	7	8	9	10	11	12	2015 TOPLAMI 2015 Total	
VOLKSWAGEN	24.001	1.336	2.575	3.182	2.680	2.054	2.049	3.606	3.084	2.749	2.258	1.944	27.517	
RENAULT	8.716	501	673	1.104	1.030	923	1.459	1.182	1.437	972	1.121	1.859	12.261	
FIAT	7.664	347	491	782	815	786	685	531	1.022	729	751	883	7.822	
MERCEDES BENZ	8.028	391	424	1.009	654	642	683	713	924	628	629	711	7.408	
PEUGEOT	5.832	303	403	704	824	738	708	655	889	424	327	583	6.558	
DACIA	6.572	250	242	696	642	583	731	563	703	546	483	890	6.329	
CITROEN	6.048	269	392	730	684	301	432	777	443	723	128	251	5.130	
KIA	2.057	147	221	136	444	373	373	367	613	373	357	464	3.868	
MITSUBISHI	4.188	390	324	518	246	205	191	321	334	212	240	239	3.220	
IVECO	2.524	117	139	282	235	210	224	131	257	252	190	224	2.261	
HYUNDAI	1.565	89	104	164	208	142	113	181	138	84	128	115	1.466	
TOYOTA	1.670	73	45	255	207	299	177	55	26	9	727	659	2.532	
FORD	333	46	167	169	273	289	256	554	609	301	258	422	3.344	
SSANGYONG	626	31	34	69	71	8	13	17	13	10	6	12	284	
ISUZU	1.728	27	19	32	59	25	15	13	17	15	18	29	269	
TATA	290	22	21	23	21	19	21	19	17	19	11	21	214	
NISSAN	275	1	0	0	2	0	0	4	0	0	0	0	7	
MAZDA	9	0	0	0	0	0	0	0	0	0	0	0	0	
<b>TOPLAM</b>	<b>82.126</b>	<b>4.340</b>	<b>6.274</b>	<b>9.855</b>	<b>9.095</b>	<b>7.597</b>	<b>8.130</b>	<b>9.689</b>	<b>10.526</b>	<b>8.046</b>	<b>7.632</b>	<b>9.306</b>	<b>0</b>	<b>90.490</b>