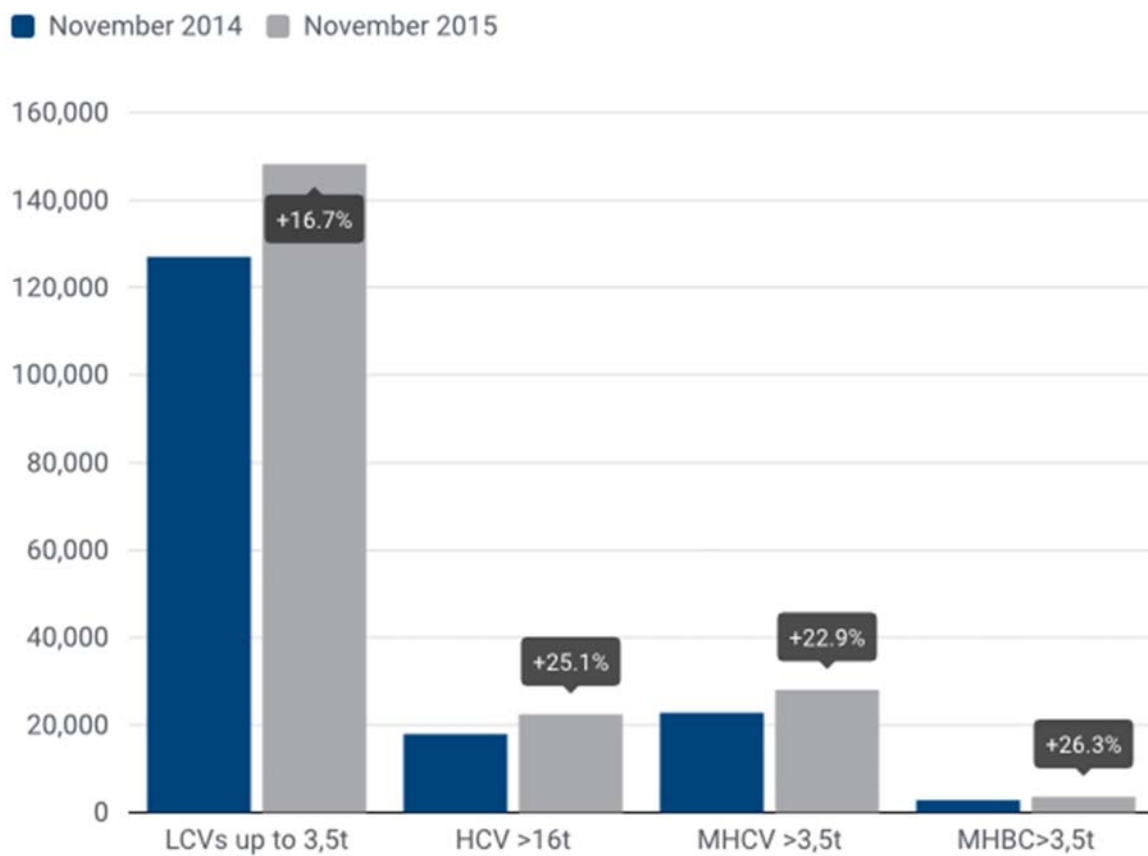


**PRESS EMBARGO: 8.00 AM (7.00 AM GMT), 18 December 2015**

**NEW COMMERCIAL VEHICLE REGISTRATIONS  
EUROPEAN UNION<sup>1</sup>**

November 2015



**Next press release: Tuesday 26 January 2015**

<sup>1</sup> Data for Malta unavailable

## Commercial vehicle registrations: +12.2% over eleven months; +17.8% in November

### Total new commercial vehicles

**In November 2015**, demand for new commercial vehicles in the EU increased (+17.8%) for the eleventh consecutive month, totalling 179,930 units. Growth was sustained across all commercial vehicle segments. Spain (+52.2%) and Italy (+28.4%) confirmed the positive momentum by showing significant growth, followed by Germany (+14.9%), the UK (+14.3%) and France (+5.6%).

**Over eleven months in 2015**, the EU market expanded (+12.2%), totalling 1,887,274 commercial vehicles. During the same period, Spain (+37.9%), the UK (+16.4%), Italy (+11.9%), Germany (+3.9%) and France (+2.4%) all posted growth.

### New light commercial vehicles (LCV) up to 3.5 tonnes

**In November 2015**, new registrations of light commercial vehicles totalled 148,322 units, up (+16.7%) compared to November 2014. This marked the 27<sup>th</sup> consecutive month of growth in the segment. Spain (+58.7%), Italy (+29.8%), Germany (+17.4%), the UK (+9.6%) and France (+4.4%) all contributed to the upturn.

**From January to November 2015**, 1,553,344 new vans were registered in the EU (+11.4%). Spain (+37.5%), the UK (+15.7%), Italy (+10.9%), Germany (+4.0%) and France (+1.3%) saw demand for vans increase over this period.

### New heavy commercial vehicles (HCV) over 16 tonnes<sup>2</sup>

**November 2015** results show a significant increase in new heavy truck registrations (+25.1%), totalling 22,423 units. The UK (+55.1%), Italy (+31.0%), Spain (+23.0%) and Germany (+12.0%) largely contributed to this positive outcome posting double-digit percentage gains.

**Eleven months into the year**, the EU market grew (+19.1%), reaching 239,117 units. Spain (+42.1%), the UK (+27.4%), Italy (+26.4%), France (+12.3%) and Germany (+5.1%) saw demand for heavy trucks increase, contributing to the overall upturn of the EU market over the period.

### New medium and heavy commercial vehicles (MHCV) over 3.5 tonnes<sup>3</sup>

**In November 2015**, 28,013 new trucks were registered in the EU, up (+22.9%) compared to November 2014. The UK market recovered strongly (+68.6%) after showing decline in October. Also Spain (+24.4%), Italy (+24.0%), France (+7.0%) and Germany (+7.0%) positively contributed to the general growth.

**From January to November 2015**, 298,113 new trucks (+15.6%) were registered in the EU. In particular, Spain (+40.5%), Italy (+21.3%), the UK (+20.7%) and France (+10.0%) posted double-digit growth over the period, followed by Germany (+3.3%) which reported more modest growth.

### New medium and heavy buses & coaches (MHBC) over 3.5 tonnes

**In November 2015**, new bus and coach registrations increased (+26.3%) compared to November 2014, totalling 3,595 units. France (+88.4%), Spain (+20.8%), Germany (+19.6%) and the UK (+7.1%) positively contributed to the overall expansion, while Italy (-23.7%) performed less well than one year ago.

**Over eleven months in 2015**, the EU market increased (+18.7%), totalling 35,817 new buses and coaches. Demand was primarily driven by Spain (+42.5%), the UK (+26.8%) and France (+23.7%), followed by Italy (+10.4%) and Germany (+8.1%).

---

<sup>2</sup> Excluding heavy buses & coaches

<sup>3</sup> Excluding buses & coaches

# P R E S S R E L E A S E

**PRESS EMBARGO FOR ALL DATA :**

**8.00 AM (7.00 AM GMT), 18 December 2015**

## PROVISIONAL

EU<sup>1</sup>+EFTA COUNTRIES NEW REGISTRATION FIGURES BY MARKET  
NEW LIGHT COMMERCIAL VEHICLES up to 3.5t<sup>2</sup>

18/12/15

	November '15	November '14	% Change	Jan-Nov '15	Jan-Nov '14	% Change
AUSTRIA	2,795	2,363	18.3%	30,274	28,923	4.7%
BELGIUM	4,479	3,865	15.9%	56,823	49,512	14.8%
BULGARIA	476	344	38.4%	4,140	3,587	15.4%
CROATIA	623	368	69.3%	6,188	4,935	25.4%
CYPRUS	129	70	84.3%	1,319	1,060	24.4%
CZECH REPUBLIC	1,689	1,203	40.4%	15,209	11,637	30.7%
DENMARK	2,923	2,804	4.2%	29,162	25,464	14.5%
ESTONIA	288	274	5.1%	3,358	2,719	23.5%
FINLAND	963	818	17.7%	10,409	9,740	6.9%
FRANCE	30,736	29,427	4.4%	337,969	333,779	1.3%
GERMANY	24,234	20,637	17.4%	215,475	207,090	4.0%
GREECE	454	339	33.9%	5,079	4,213	20.6%
HUNGARY	1,867	1,614	15.7%	15,220	13,952	9.1%
IRELAND	626	612	2.3%	23,593	16,580	42.3%
ITALY <sup>3</sup>	13,000	10,013	29.8%	117,734	106,152	10.9%
LATVIA	234	211	10.9%	2,154	2,238	-3.8%
LITHUANIA	221	156	41.7%	2,148	1,835	17.1%
LUXEMBOURG	386	279	38.4%	3,515	3,088	13.8%
NETHERLANDS	4,777	4,350	9.8%	54,307	49,048	10.7%
POLAND	5,015	3,922	27.9%	46,937	40,407	16.2%
PORTUGAL	3,026	2,536	19.3%	27,130	22,444	20.9%
ROMANIA	1,156	1,078	7.2%	9,779	8,988	8.8%
SLOVAKIA	892	488	82.8%	6,577	5,065	29.9%
SLOVENIA	722	548	31.8%	6,672	6,481	2.9%
SPAIN	13,796	8,693	58.7%	140,456	102,177	37.5%
SWEDEN	3,764	3,566	5.6%	40,297	37,602	7.2%
UNITED KINGDOM	29,051	26,516	9.6%	341,420	295,157	15.7%
<b>EUROPEAN UNION<sup>1</sup></b>	<b>148,322</b>	<b>127,094</b>	<b>16.7%</b>	<b>1,553,344</b>	<b>1,393,873</b>	<b>11.4%</b>
<b>EU15<sup>4</sup></b>	<b>135,010</b>	<b>116,818</b>	<b>15.6%</b>	<b>1,433,643</b>	<b>1,290,969</b>	<b>11.1%</b>
<b>EU12<sup>5</sup></b>	<b>13,312</b>	<b>10,276</b>	<b>29.5%</b>	<b>119,701</b>	<b>102,904</b>	<b>16.3%</b>
<b>ICELAND<sup>6</sup></b>	<b>73</b>	<b>61</b>	<b>19.7%</b>	<b>1,234</b>	<b>775</b>	<b>59.2%</b>
<b>NORWAY</b>	<b>3,032</b>	<b>2,553</b>	<b>18.8%</b>	<b>28,789</b>	<b>26,968</b>	<b>6.8%</b>
<b>SWITZERLAND</b>	<b>2,662</b>	<b>2,441</b>	<b>9.1%</b>	<b>28,410</b>	<b>26,487</b>	<b>7.3%</b>
<b>EFTA</b>	<b>5,767</b>	<b>5,055</b>	<b>14.1%</b>	<b>58,433</b>	<b>54,230</b>	<b>7.8%</b>
<b>EU+EFTA</b>	<b>154,089</b>	<b>132,149</b>	<b>16.6%</b>	<b>1,611,777</b>	<b>1,448,103</b>	<b>11.3%</b>
<b>WESTERN EUROPE (EU15+EFTA)</b>	<b>140,777</b>	<b>121,873</b>	<b>15.5%</b>	<b>1,492,076</b>	<b>1,345,199</b>	<b>10.9%</b>

SOURCE: NATIONAL AUTOMOBILE MANUFACTURERS' ASSOCIATIONS

<sup>1</sup> Data for Malta unavailable

<sup>2</sup> Including Light Buses & Coaches

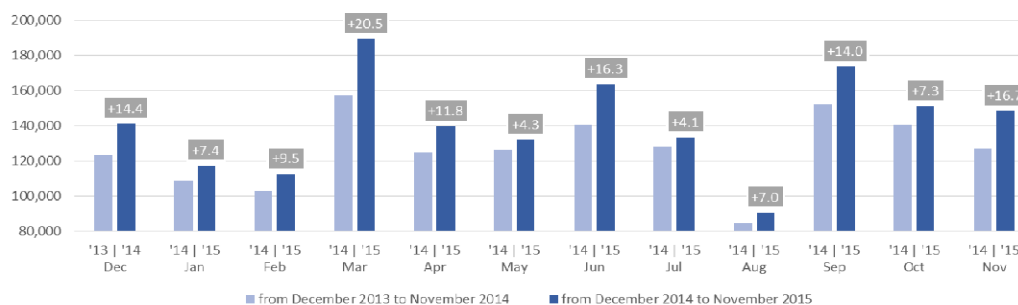
<sup>3</sup> ANFIA estimates

<sup>4</sup> Member States before the 2004 enlargement

<sup>5</sup> Member States having joined the EU since 2004 (data for Malta unavailable)

<sup>6</sup> AAA estimates

New light commercial vehicle registrations in the EU - 12 month trend



For further information, please contact: Ms Francesca Piazza - Statistics & Communications Advisor - E-mail: fp@acea.be - Tel. (32) 2 738 73 55

This information is available on the ACEA website: <http://www.acea.be>

Next press release on Commercial Vehicles to be issued on Tuesday 26 January 2016

**PRESS EMBARGO FOR ALL DATA :**

**8.00 AM (7.00 AM GMT), 18 December 2015**

## PROVISIONAL

### EU<sup>1</sup>+EFTA COUNTRIES NEW REGISTRATION FIGURES BY MARKET NEW HEAVY COMMERCIAL VEHICLES of 16t and over<sup>2</sup>

18/12/15

	November '15	November '14	% Change	Jan-Nov '15	Jan-Nov '14	% Change
AUSTRIA	476	335	42.1%	6,405	6,054	5.8%
BELGIUM	489	453	7.9%	6,453	5,964	8.2%
BULGARIA	n.a	n.a	n.a	n.a	n.a	n.a
CROATIA	60	67	-10.4%	728	717	1.5%
CYPRUS	0	2	-100.0%	11	9	22.2%
CZECH REPUBLIC <sup>3</sup>	854	696	22.7%	8,061	6,920	16.5%
DENMARK	364	240	51.7%	4,065	2,987	36.1%
ESTONIA	83	51	62.7%	687	668	2.8%
FINLAND	143	116	23.3%	1,956	1,788	9.4%
FRANCE	3,186	2,957	7.7%	33,491	29,831	12.3%
GERMANY	4,836	4,319	12.0%	56,868	54,096	5.1%
GREECE	27	7	285.7%	224	187	19.8%
HUNGARY	519	424	22.4%	4,586	3,892	17.8%
IRELAND <sup>4</sup>	55	29	89.7%	1,483	1,435	3.3%
ITALY <sup>5</sup>	1,039	793	31.0%	11,041	8,737	26.4%
LATVIA	134	51	162.7%	1,313	913	43.8%
LITHUANIA <sup>4</sup>	236	125	88.8%	3,399	1,987	71.1%
LUXEMBOURG <sup>4</sup>	75	45	66.7%	963	873	10.3%
NETHERLANDS	860	868	-0.9%	11,612	8,333	39.3%
POLAND	1,891	1,288	46.8%	18,250	13,801	32.2%
PORTUGAL	355	328	8.2%	2,823	2,088	35.2%
ROMANIA	705	339	108.0%	5,232	3,381	54.7%
SLOVAKIA	277	220	25.9%	3,770	2,963	27.2%
SLOVENIA <sup>4</sup>	156	114	36.8%	1,595	1,230	29.7%
SPAIN	2,072	1,685	23.0%	17,567	12,362	42.1%
SWEDEN	443	378	17.2%	4,313	4,245	1.6%
UNITED KINGDOM	3,088	1,991	55.1%	32,221	25,288	27.4%
<b>EUROPEAN UNION<sup>1</sup></b>	<b>22,423</b>	<b>17,921</b>	<b>25.1%</b>	<b>239,117</b>	<b>200,749</b>	<b>19.1%</b>
EU15	17,508	14,544	20.4%	191,485	164,268	16.6%
EU12 <sup>1</sup>	4,915	3,377	45.5%	47,632	36,481	30.6%
ICELAND <sup>4</sup>	8	6	33.3%	106	69	53.6%
NORWAY <sup>4</sup>	314	320	-1.9%	3,649	3,790	-3.7%
SWITZERLAND <sup>3</sup>	241	200	20.5%	2,872	3,111	-7.7%
EFTA	563	526	7.0%	6,627	6,970	-4.9%
<b>EU+EFTA</b>	<b>22,986</b>	<b>18,447</b>	<b>24.6%</b>	<b>245,744</b>	<b>207,719</b>	<b>18.3%</b>
<b>WESTERN EUROPE (EU15+EFTA)</b>	<b>18,071</b>	<b>15,070</b>	<b>19.9%</b>	<b>198,112</b>	<b>171,238</b>	<b>15.7%</b>

SOURCE: NATIONAL AUTOMOBILE MANUFACTURERS' ASSOCIATIONS

<sup>1</sup> Data for Malta unavailable

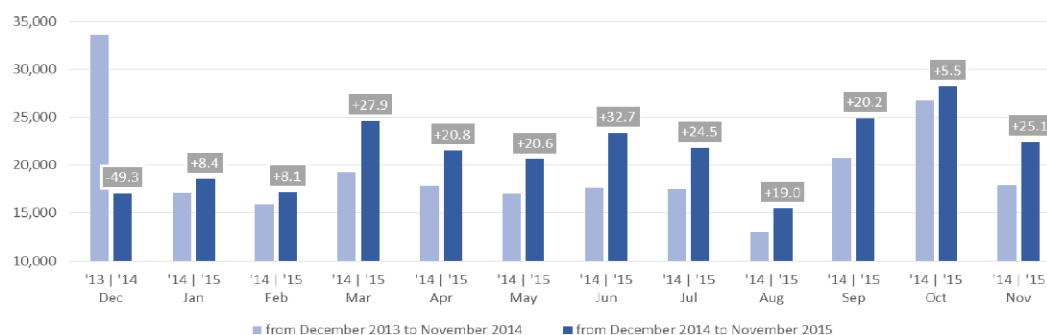
<sup>4</sup> AAA estimates

<sup>2</sup> Excluding Heavy Buses & Coaches

<sup>5</sup> ANFA estimates based on vehicle registration certificates issued by the Italian Ministry of Transport

<sup>3</sup> Heavy Commercial Vehicles of 18t and over

### New heavy commercial vehicle registrations in the EU - 12 month trend



For further information, please contact: Ms Francesca Piazza - Statistics & Communications Advisor - E-mail: fp@acea.be - Tel. (32) 2 738 73 55

This information is available on the ACEA website: <http://www.acea.be>

**PRESS EMBARGO FOR ALL DATA :**

**8.00 AM (7.00 AM GMT), 18 December 2015**

## PROVISIONAL

EU<sup>1</sup>+EFTA COUNTRIES NEW REGISTRATION FIGURES BY MARKET  
NEW MEDIUM & HEAVY COMMERCIAL VEHICLES over 3.5t<sup>2</sup>

18/12/15

	November '15	November '14	% Change	Jan-Nov '15	Jan-Nov '14	% Change
AUSTRIA	519	391	32.7%	6,928	6,526	6.2%
BELGIUM	599	556	7.7%	7,870	7,369	6.8%
BULGARIA	n.a.	n.a.	n.a.	n.a.	n.a.	n.a.
CROATIA	67	70	-4.3%	949	905	4.9%
CYPRUS	0	3	-100.0%	40	23	73.9%
CZECH REPUBLIC	1,041	789	31.9%	9,682	8,313	16.5%
DENMARK	380	271	40.2%	4,425	3,305	33.9%
ESTONIA	86	56	53.6%	740	725	2.1%
FINLAND	187	157	19.1%	2,476	2,348	5.5%
FRANCE	3,651	3,411	7.0%	38,865	35,323	10.0%
GERMANY	7,446	6,959	7.0%	82,688	80,065	3.3%
GREECE	31	8	287.5%	400	318	25.8%
HUNGARY	562	451	24.6%	4,972	4,252	16.9%
IRELAND	76	31	145.2%	1,853	1,771	4.6%
ITALY <sup>3</sup>	1,287	1,038	24.0%	14,113	11,635	21.3%
LATVIA	137	59	132.2%	1,387	992	39.8%
LITHUANIA <sup>4</sup>	243	137	77.4%	3,497	2,113	65.5%
LUXEMBOURG	84	48	75.0%	1,025	963	6.4%
NETHERLANDS	996	966	3.1%	12,910	9,360	37.9%
POLAND	2,072	1,548	33.9%	20,202	15,942	26.7%
PORTUGAL	467	428	9.1%	3,619	2,719	33.1%
ROMANIA	728	354	105.6%	5,480	3,624	51.2%
SLOVAKIA	319	243	31.3%	3,860	3,051	26.5%
SLOVENIA <sup>4</sup>	170	128	32.8%	1,741	1,360	28.0%
SPAIN	2,347	1,887	24.4%	20,496	14,591	40.5%
SWEDEN	528	435	21.4%	4,881	4,708	3.7%
UNITED KINGDOM	3,990	2,366	68.6%	43,014	35,634	20.7%
<b>EUROPEAN UNION<sup>1</sup></b>	<b>28,013</b>	<b>22,790</b>	<b>22.9%</b>	<b>298,113</b>	<b>257,935</b>	<b>15.6%</b>
<b>EU15</b>	<b>22,588</b>	<b>18,952</b>	<b>19.2%</b>	<b>245,563</b>	<b>216,635</b>	<b>13.4%</b>
<b>EU12<sup>1</sup></b>	<b>5,425</b>	<b>3,838</b>	<b>41.3%</b>	<b>52,550</b>	<b>41,300</b>	<b>27.2%</b>
<b>ICELAND<sup>4</sup></b>	<b>10</b>	<b>12</b>	<b>-16.7%</b>	<b>189</b>	<b>115</b>	<b>64.3%</b>
<b>NORWAY</b>	<b>406</b>	<b>378</b>	<b>7.4%</b>	<b>4,930</b>	<b>5,058</b>	<b>-2.5%</b>
<b>SWITZERLAND</b>	<b>319</b>	<b>261</b>	<b>22.2%</b>	<b>3,662</b>	<b>3,931</b>	<b>-6.8%</b>
<b>EFTA</b>	<b>735</b>	<b>651</b>	<b>12.9%</b>	<b>8,781</b>	<b>9,104</b>	<b>-3.5%</b>
<b>EU+EFTA</b>	<b>28,748</b>	<b>23,441</b>	<b>22.6%</b>	<b>306,894</b>	<b>267,039</b>	<b>14.9%</b>
<b>WESTERN EUROPE (EU15+EFTA)</b>	<b>23,323</b>	<b>19,603</b>	<b>19.0%</b>	<b>254,344</b>	<b>225,739</b>	<b>12.7%</b>

SOURCE: NATIONAL AUTOMOBILE MANUFACTURERS' ASSOCIATIONS

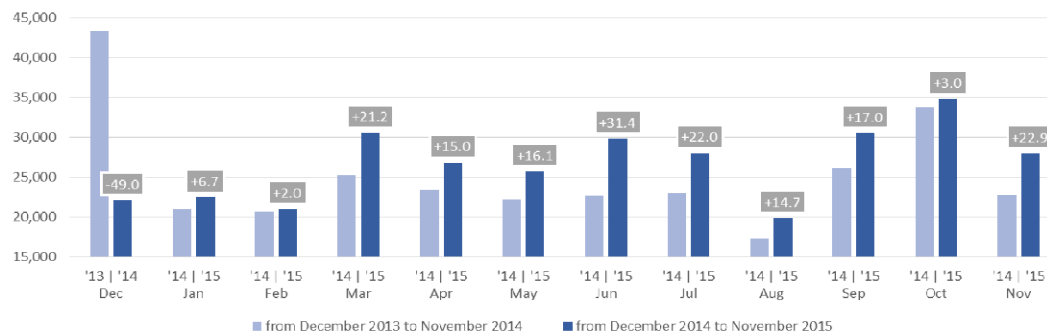
<sup>1</sup> Data for Malta unavailable

<sup>3</sup> ANFIA estimates based on vehicle registration certificates issued by the Italian Ministry of Transport

<sup>2</sup> Excluding total Buses & Coaches over 3.5t

<sup>4</sup> AAA estimates

New medium and heavy commercial vehicle registrations in the EU - 12 month trend



**PRESS EMBARGO FOR ALL DATA :**

**8.00 AM (7.00 AM GMT), 18 December 2015**

## PROVISIONAL

EU<sup>1</sup>+EFTA COUNTRIES NEW REGISTRATION FIGURES BY MARKET  
NEW MEDIUM & HEAVY BUSES & COACHES over 3.5t

18/12/15

	November '15	November '14	% Change	Jan-Nov '15	Jan-Nov '14	% Change
AUSTRIA	87	91	-4.4%	801	801	0.0%
BELGIUM	84	70	20.0%	892	1,041	-14.3%
BULGARIA	n.a.	n.a.	n.a.	n.a.	n.a.	n.a.
CROATIA	9	2	350.0%	116	93	24.7%
CYPRUS	n.a.	n.a.	n.a.	n.a.	n.a.	n.a.
CZECH REPUBLIC	226	132	71.2%	1,180	827	42.7%
DENMARK	108	76	42.1%	452	438	3.2%
ESTONIA	14	32	-56.3%	196	151	29.8%
FINLAND	27	33	-18.2%	489	661	-26.0%
FRANCE	682	362	88.4%	6,612	5,345	23.7%
GERMANY	749	626	19.6%	5,210	4,820	8.1%
GREECE	8	4	100.0%	121	169	-28.4%
HUNGARY	48	35	37.1%	452	344	31.4%
IRELAND	0	11	-100.0%	281	206	36.4%
ITALY <sup>2</sup>	142	186	-23.7%	2,236	2,025	10.4%
LATVIA	2	22	-90.9%	202	182	11.0%
LITHUANIA <sup>3</sup>	11	29	-62.1%	194	260	-25.4%
LUXEMBOURG	3	8	-62.5%	249	151	64.9%
NETHERLANDS	5	33	-84.8%	319	396	-19.4%
POLAND	209	103	102.9%	1,527	1,312	16.4%
PORTUGAL	11	15	-26.7%	243	218	11.5%
ROMANIA	126	101	24.8%	2,181	1,102	97.9%
SLOVAKIA	55	47	17.0%	282	352	-19.9%
SLOVENIA <sup>3</sup>	17	11	54.5%	149	164	-9.1%
SPAIN	157	130	20.8%	2,382	1,671	42.5%
SWEDEN	178	93	91.4%	1,162	1,232	-5.7%
UNITED KINGDOM	637	595	7.1%	7,889	6,221	26.8%
<b>EUROPEAN UNION<sup>1</sup></b>	<b>3,595</b>	<b>2,847</b>	<b>26.3%</b>	<b>35,817</b>	<b>30,182</b>	<b>18.7%</b>
<b>EU15</b>	<b>2,878</b>	<b>2,333</b>	<b>23.4%</b>	<b>29,338</b>	<b>25,395</b>	<b>15.5%</b>
<b>EU12<sup>1</sup></b>	<b>717</b>	<b>514</b>	<b>39.5%</b>	<b>6,479</b>	<b>4,787</b>	<b>35.3%</b>
<b>ICELAND<sup>3</sup></b>	<b>1</b>	<b>0</b>		<b>94</b>	<b>63</b>	<b>49.2%</b>
<b>NORWAY</b>	<b>48</b>	<b>54</b>	<b>-11.1%</b>	<b>776</b>	<b>852</b>	<b>-8.9%</b>
<b>SWITZERLAND</b>	<b>97</b>	<b>70</b>	<b>38.6%</b>	<b>658</b>	<b>555</b>	<b>18.6%</b>
<b>EFTA</b>	<b>146</b>	<b>124</b>	<b>17.7%</b>	<b>1,528</b>	<b>1,470</b>	<b>3.9%</b>
<b>EU+EFTA</b>	<b>3,741</b>	<b>2,971</b>	<b>25.9%</b>	<b>37,345</b>	<b>31,652</b>	<b>18.0%</b>
<b>WESTERN EUROPE (EU15+EFTA)</b>	<b>3,024</b>	<b>2,457</b>	<b>23.1%</b>	<b>30,866</b>	<b>26,865</b>	<b>14.9%</b>

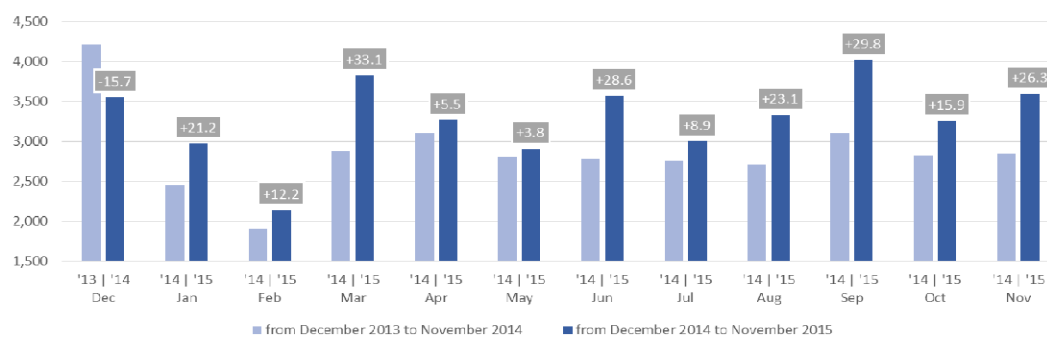
SOURCE: NATIONAL AUTOMOBILE MANUFACTURERS' ASSOCIATIONS

<sup>1</sup> Data for Malta unavailable

<sup>2</sup> ANFIA estimates based on vehicle registration certificates issued by the Italian Ministry of Transport

<sup>3</sup> AAA estimates

New medium and heavy buses & coaches registrations in the EU - 12 month trend



For further information, please contact: Ms Francesca Piazza - Statistics & Communications Advisor - E-mail: fp@acea.be - Tel. (32) 2 738 73 55

This information is available on the ACEA website: <http://www.acea.be>

**PRESS EMBARGO FOR ALL DATA :**

**8.00 AM (7.00 AM GMT), 18 December 2015**

**PROVISIONAL**  
**EU<sup>1</sup>+EFTA COUNTRIES NEW REGISTRATION FIGURES BY MARKET**  
**TOTAL NEW COMMERCIAL VEHICLES<sup>2</sup>**

18/12/15

	November '15	November '14	% Change	Jan-Nov '15	Jan-Nov '14	% Change
AUSTRIA	3,401	2,845	19.5%	38,003	36,250	4.8%
BELGIUM	5,162	4,491	14.9%	65,585	57,922	13.2%
BULGARIA <sup>3</sup>	476	344	38.4%	4,140	3,587	15.4%
CROATIA	699	440	58.9%	7,253	5,933	22.2%
CYPRUS <sup>4</sup>	129	73	76.7%	1,359	1,083	25.5%
CZECH REPUBLIC	2,956	2,124	39.2%	26,071	20,777	25.5%
DENMARK	3,411	3,151	8.3%	34,039	29,207	16.5%
ESTONIA	388	362	7.2%	4,294	3,595	19.4%
FINLAND	1,177	1,008	16.8%	13,374	12,749	4.9%
FRANCE	35,069	33,200	5.6%	383,446	374,447	2.4%
GERMANY	32,429	28,222	14.9%	303,373	291,975	3.9%
GREECE	493	351	40.5%	5,600	4,700	19.1%
HUNGARY	2,477	2,100	18.0%	20,644	18,548	11.3%
IRELAND	702	654	7.3%	25,727	18,557	38.6%
ITALY <sup>5</sup>	14,429	11,237	28.4%	134,083	119,812	11.9%
LATVIA	373	292	27.7%	3,743	3,412	9.7%
LITHUANIA	475	322	47.5%	5,839	4,208	38.8%
LUXEMBOURG	473	335	41.2%	4,789	4,202	14.0%
NETHERLANDS	5,778	5,349	8.0%	67,536	58,804	14.8%
POLAND	7,296	5,573	30.9%	68,666	57,661	19.1%
PORTUGAL	3,504	2,979	17.6%	30,992	25,381	22.1%
ROMANIA	2,010	1,533	31.1%	17,440	13,714	27.2%
SLOVAKIA	1,266	778	62.7%	10,719	8,468	26.6%
SLOVENIA	909	687	32.3%	8,562	8,005	7.0%
SPAIN	16,300	10,710	52.2%	163,334	118,439	37.9%
SWEDEN	4,470	4,094	9.2%	46,340	43,542	6.4%
UNITED KINGDOM	33,678	29,477	14.3%	392,323	337,012	16.4%
<b>EUROPEAN UNION<sup>1</sup></b>	<b>179,930</b>	<b>152,731</b>	<b>17.8%</b>	<b>1,887,274</b>	<b>1,681,990</b>	<b>12.2%</b>
<b>EU15</b>	<b>160,476</b>	<b>138,103</b>	<b>16.2%</b>	<b>1,708,544</b>	<b>1,532,999</b>	<b>11.5%</b>
<b>EU12<sup>1</sup></b>	<b>19,454</b>	<b>14,628</b>	<b>33.0%</b>	<b>178,730</b>	<b>148,991</b>	<b>20.0%</b>
ICELAND	84	73	15.1%	1,517	953	59.2%
NORWAY	3,486	2,985	16.8%	34,495	32,878	4.9%
SWITZERLAND	3,078	2,772	11.0%	32,730	30,973	5.7%
<b>EFTA</b>	<b>6,648</b>	<b>5,830</b>	<b>14.0%</b>	<b>68,742</b>	<b>64,804</b>	<b>6.1%</b>
<b>EU+EFTA</b>	<b>186,578</b>	<b>158,561</b>	<b>17.7%</b>	<b>1,956,016</b>	<b>1,746,794</b>	<b>12.0%</b>
<b>WESTERN EUROPE (EU15+EFTA)</b>	<b>167,124</b>	<b>143,933</b>	<b>16.1%</b>	<b>1,777,286</b>	<b>1,597,803</b>	<b>11.2%</b>

SOURCE: NATIONAL AUTOMOBILE MANUFACTURERS' ASSOCIATIONS

<sup>1</sup> Data for Malta unavailable

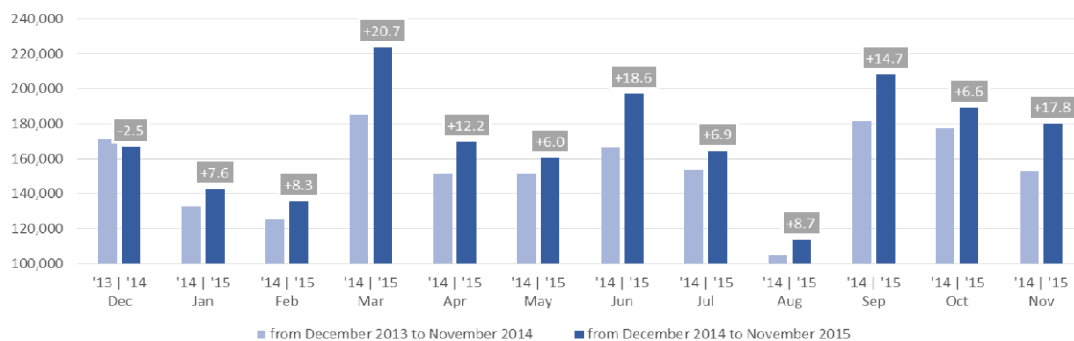
<sup>4</sup> Data for Buses & Coaches unavailable

<sup>2</sup> Total Light, Medium & Heavy Commercial Vehicles and Buses & Coaches

<sup>5</sup> ANFIA estimates based on vehicle registration certificates issued by the Italian Ministry of Transport

<sup>3</sup> Data for Medium & Heavy Commercial Vehicles and Buses & Coaches unavailable

Total new commercial vehicle registrations in the EU - 12 month trend



For further information, please contact: Ms Francesca Piazza - Statistics & Communications Advisor - E-mail: fp@acea.be - Tel. (32) 2 738 73 55

This information is available on the ACEA website: <http://www.acea.be>