



OTOMOTİV SANAYİİ DERNEĞİ
AUTOMOTIVE MANUFACTURERS ASSOCIATION

AYLIK RAPOR

Automotive Industry Monthly Report

Ocak / January 2014

- **Üretim/Production**
- **Satış/Sales**
- **İthalat/Imports**
- **İhracat/Exports**

OSD "OICA" Üyesidir



OSD is a Member of "OICA"



2014 Ocak Ayı Özeti / 2014 January Summary

KONULAR/MATTERS		OCAK / JANUARY			SON 12 AYLIK / YoY		
		2013	2014	2014/2013 (%)	2013	2014	2014/2013 (%)
Üretim/Production	Toplam/Total	83.808	75.042	-10	1.072.420	1.116.768	4
	Otomobil/P.Cars	40.071	52.006	30	571.664	645.539	13
Pazar/Market	Toplam/Total	37.140	34.288	-8	823.541	890.272	8
	Otomobil/P.Cars	25.835	24.368	-6	561.038	663.188	18
İthalat/Import	Toplam/Total	23.666	22.680	-4	516.879	614.623	19
	Otomobil/P.Cars	19.509	18.208	-7	415.298	516.226	24
İhracat/Export	Toplam/Total	57.665	51.423	-11	728.604	822.229	13
	Otomobil/P.Cars	27.961	35.925	28	408.941	492.468	20
İhracat / export (\$)	Toplam/Total **	1.498.866.174	1.627.783.944	9	19.366.872.955	21.821.716.825	13
	Otomobil/P.Cars	422.712.801	493.080.962	17	5.992.296.061	6.926.238.868	16

PARAMETRELER / PARAMETERS	OCAK / JANUARY			SON 12 AYLIK / YoY		
	2013	2014	2014/2013 (%)	2013	2014	2014/2013 (%)
ÜFE/PPI	-0,18	3,32	**	1,88	10,72	**
TÜFE/CPI	1,65	1,98	**	7,31	7,75	**
Sanayi Endeksi/Industry Index	0,29	3,29	**	1,46	11,69	**
\$ (*)	1,7633	2,2737	29	1,7897	1,9752	10
EURO (*)	2,3902	3,0782	29	2,3181	2,6232	13
Japon Yeni (*)	1,9381	2,2258	15	2,2069	1,9864	-10

(*) Ortalama Değerler / Average Values

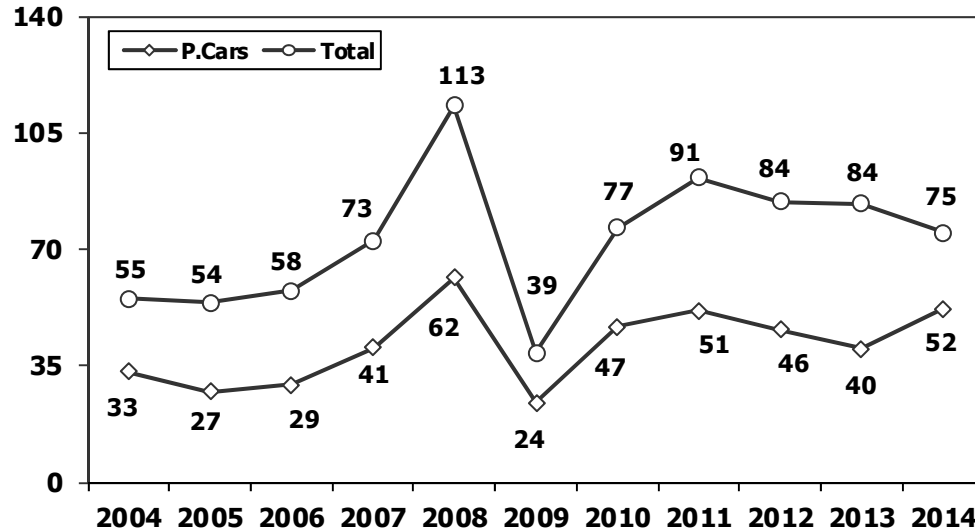
(**) Toplam Sanayi / Total Industry Including Components

2013/2014 Yılları Üretim 2013/2014 Production

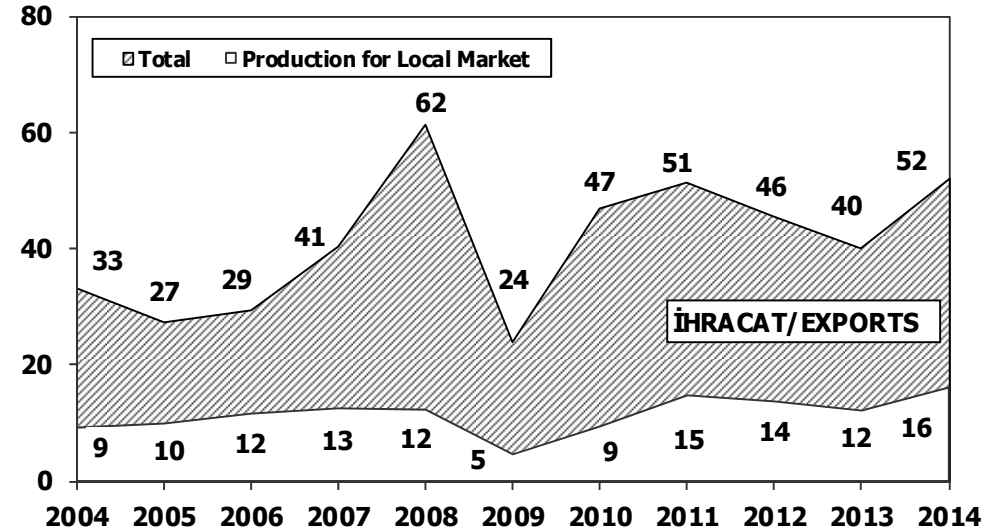
K.KAMYON : AYA 3.5-12 Ton (L.Truck:GVW 3.5-12 Ton)
B.KAMYON : AYA 12 Ton'dan Büyük (M.Truck:GVW 12 Ton And Up)

TİPLER	OCAK AYI ÜRETİMİ January Production		DEĞİŞİM % Percent Change %	
	2013	2014	OCAK January	1 AY 1 Month
OTOMOBİL - P.Car	40.071	52.006	30	30
TİCARİ ARAÇLAR - Commercial Vehicles	43.737	23.036	-47	-47
* B. KAMYON - M. Truck	1.601	1.768	10	10
* K. KAMYON - L. Truck	469	259	-45	-45
* KAMYONET - Pick Up	37.203	18.388	-51	-51
* OTOBÜS - Bus	785	485	-38	-38
* MİNİBÜS - Minibus	3.278	1.537	-53	-53
* MİDİBÜS - Midibus	401	599	49	49
TAŞIT ARAÇLARI TOPLAM - MV Total	83.808	75.042	-10	-10
TRAKTÖR - F.Tractor	3.010	3.402	13	13
GENEL TOPLAM - Grand Total	86.818	78.444	-10	-10

Toplam Üretim ve Otomobil Üretimi (x1000)
Total & P.Cars Production (x1000)



Otomobil Üretimi ve İhracat (x1000)
P.Cars Production & Exports (x1000)



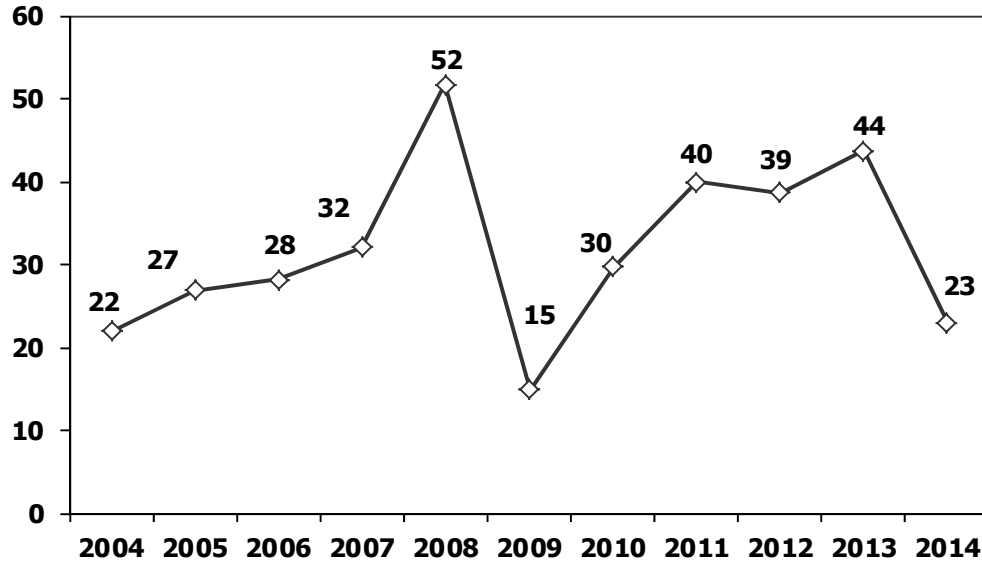


Ocak Ayı Üretimi (January Production)

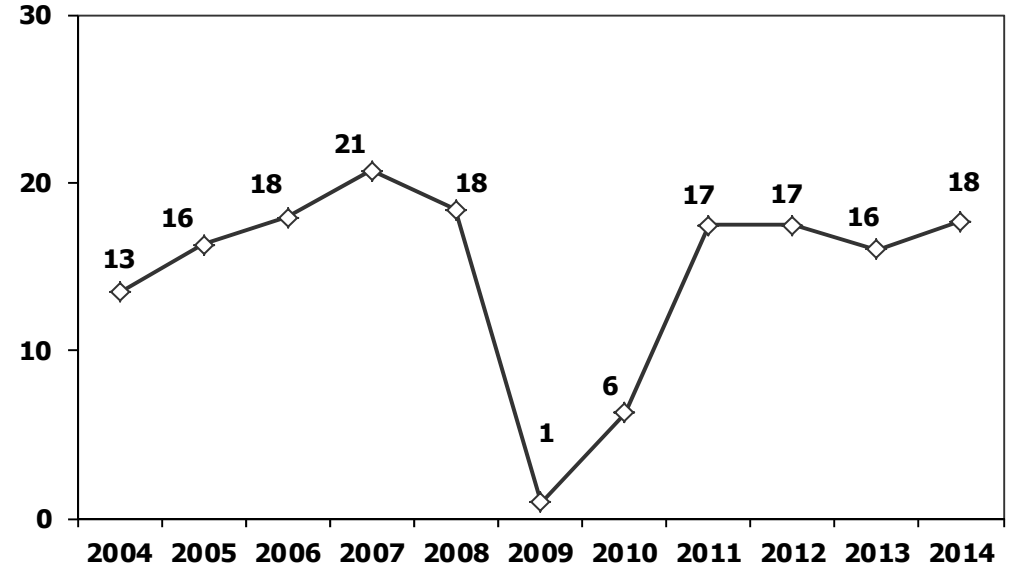
FİRHALAR Companies	OTOMOBİL Pass.Car	%	K.KAMYON L.Truck	%	B.KAMYON Mid.Truck	%	KAMYONET Pick Up	%	OTOBÜS Bus	%	MINİBÜS Mini-Bus	%	MİDİBÜS Mid-Bus	%	TRAKTÖR F.Tractor	%	TOPLAM Totals
A.T.O.S.	0	0	231	90	0	0	8	0	0	0	0	0	182	27	0	0	490
FORD OTOMAN	0	0	0	0	300	17	6.831	37	0	0	1.438	95	0	0	0	0	8.610
HATTAT	0	0	0	0	0	0	0	0	0	0	0	0	0	0	172	5	172
HONDA TÜRKİYE	1.470	3	0	0	0	0	0	0	0	0	0	0	0	0	0	0	1.470
HYUNDAI ASSAN	14.120	27	0	0	0	0	0	0	0	0	0	0	0	0	0	0	14.120
KARSAN	0	0	0	0	0	0	0	0	40	3	78	5	0	0	0	0	118
M. BENZ TÜRK	0	0	0	0	1.468	83	0	0	204	42	0	0	0	0	0	0	1.672
MAN TÜRKİYE	0	0	0	0	0	0	0	0	68	14	0	0	0	0	0	0	68
OTOKAR	0	0	27	10	0	0	20	0	13	3	0	0	227	38	0	0	289
OYAK RENAULT	18.259	35	0	0	0	0	0	0	0	0	0	0	0	0	0	0	18.259
TEMSA	0	0	0	0	0	0	0	0	160	33	0	0	210	35	0	0	370
TOFAS	4.829	9	0	0	0	0	11.511	63	0	0	0	0	0	0	0	0	16.340
TOYOTA	13.328	28	0	0	0	0	0	0	0	0	0	0	0	0	0	0	13.328
TÜRK TRAKTÖR	0	0	0	0	0	0	0	0	0	0	0	0	0	0	3.230	95	3.230
TOPLAM	52.006	100	259	100	1.768	100	18.368	100	485	100	1.537	100	599	100	3.402	100	78.444



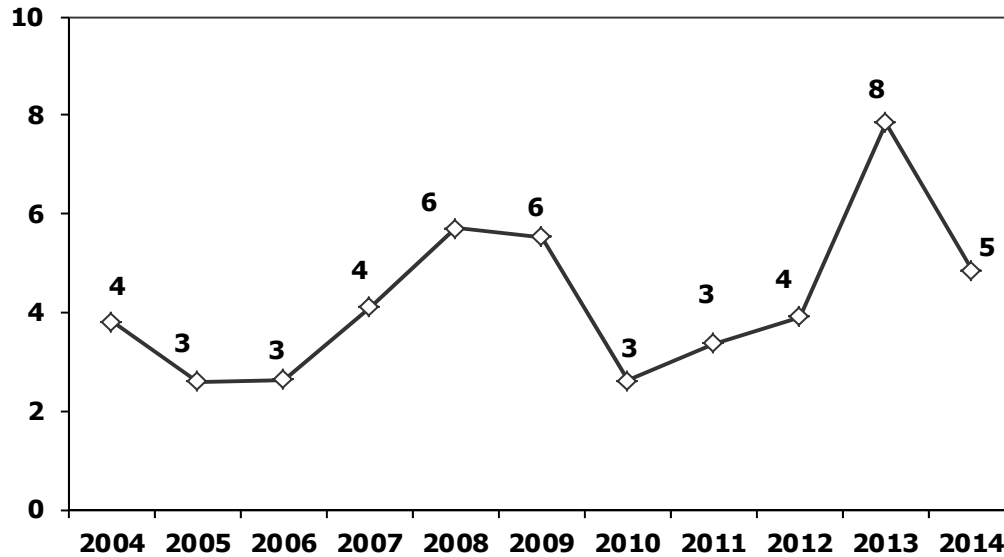
Ticari Araç Üretimi (x1000) (Ocak)
Commercial Vehicle Production (x1000) (January)



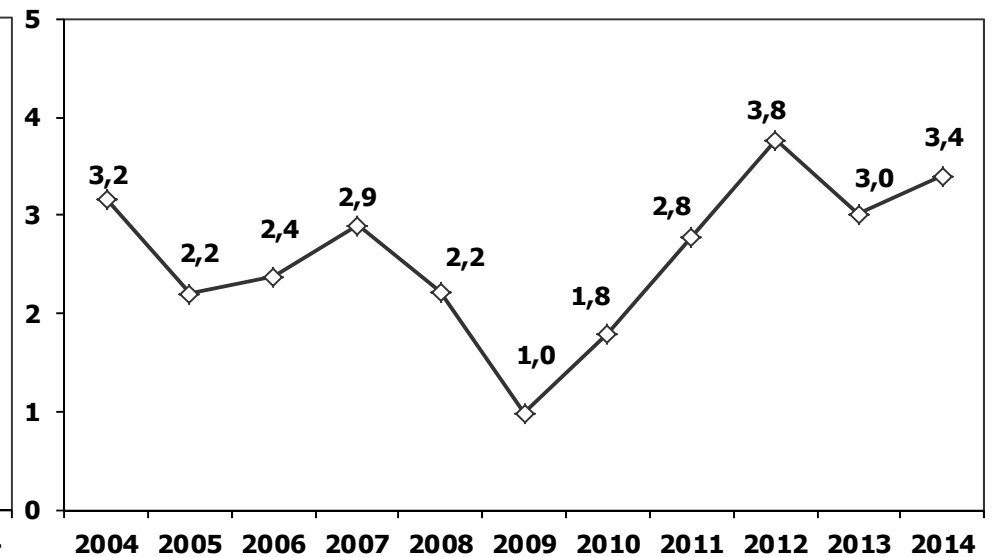
(AYA >12 Ton) **Büyük Kamyon Üretimi** (x100) (Ocak)
(GVW >12 Ton) Heavy Truck Production (x100) (January)



Otobüs Üretimi (x100) (Ocak)
Bus Production (x100) (January)

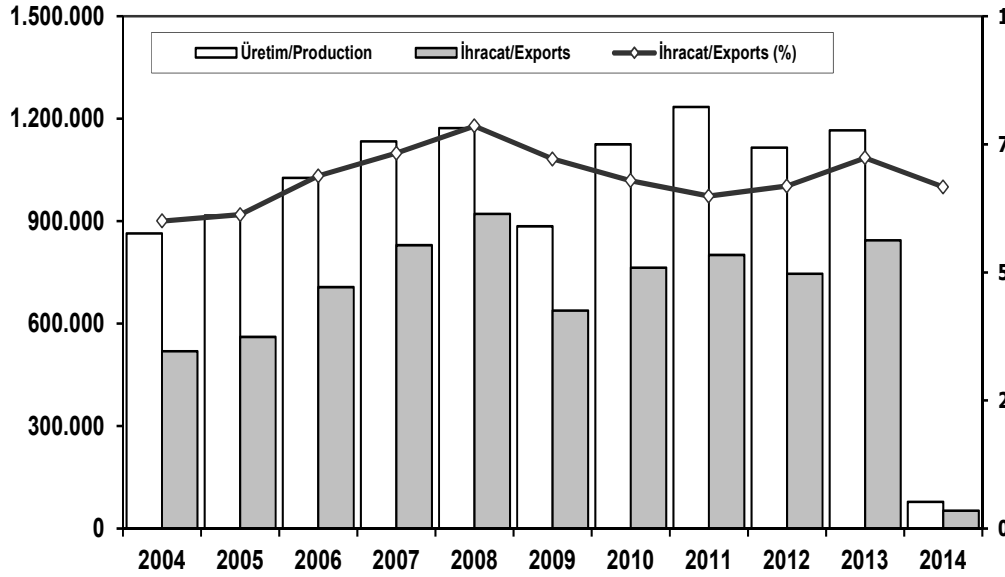


Traktör Üretimi (x1000) (Ocak)
F. Tractor Production (x1000) (January)





İhracat/Üretim (2014 Ocak) Exports/Production (2014 January)



	2004	2005	2006	2007	2008	2009	2010	2011	2012	2013	2014
Üretim/Production	864.073	916.062	1.026.427	1.132.951	1.171.917	884.466	1.124.982	1.234.637	1.115.233	1.166.043	78.444
İhracat/Exports	518.595	561.078	706.402	829.879	920.763	637.855	763.670	801.112	745.354	843.467	52.287
İhracat/Exports (%)	60	61	69	73	79	72	68	65	67	72	67

Taşıt Araçları İhracatı Motor Vehicle Exports

SEKTÖR/SECTOR	2012	2013	2013		2013/2012 (%)
			1 Ay-1 Mo		
		2013	2014		
OTOMOBİL/ P.Cars	412.991	484.504	27.961	35.925	28
TİCARİ ARAÇLAR/ CV	316.932	343.967	29.704	15.498	-48
* Kamyonet/Pick-Up	292.601	300.765	26.802	13.720	-49
* Minibüs/Minibus	16.429	34.664	2.603	1.484	-43
* Kamyon/Truck	2.682	3.055	29	66	128
* Midibüs/Midibus	1.173	985	80	54	-33
* Otobüs/Bus	4.047	4.498	190	174	-8
TAŞIT ARAÇLARI/ MV TOTAL	729.923	828.471	57.665	51.423	-11
TRAKTÖR/F.TRACTOR	15.431	14.996	783	864	10
TOTAL	745.354	843.467	58.448	52.287	-11

Otomotiv Ana ve Yan Sanayii İhracatı (ABD \$) CBU and CKD Exports - \$

SEKTÖR/SECTOR	2011 Toplam (Total)	2012 Toplam (Total)	2013 Toplam (Total)	2013		2014/2013 (%)
				1 Ay (1 Month)		
		2013	2014			
Toplam Yan Sanayi/Total Component Industry	8.307.826.870	8.215.954.295	9.065.989.776	698.935.455	818.333.016	17
İç ve Dış Lastik / Tyres	1.373.205.546	1.199.572.093,47	1.130.088.420	91.217.518	102.101.254	12
Emniyet Camı / Safety Glasses	120.041.467	120.641.763,30	135.200.030	11.444.196	13.559.779	18
Motor (Engine)	273.896.369	272.085.582,31	319.294.885	24.782.142	14.091.713	-43
Akümülatör / Batteries	232.611.079	250.104.807,27	306.455.257	19.302.686	24.212.009	25
Diğer Aksam ve Parça / Spare Parts&Components	6.308.072.409	6.373.550.048,17	7.174.951.182	552.188.913	664.368.262	20
Toplam Ana Sanayi/Total Vehicle Industry	12.128.522.618	11.100.457.162	12.497.186.221	799.930.719	809.450.928	1
Otobüs / Bus	929.372.870	855.424.303,62	937.790.963	37.106.590	40.779.688	10
Midibüs-Minibüs / Minibus- Minibus	145.199.034	161.806.275,12	147.802.463	11.047.571	4.885.100	-56
Otomobil (P. Cars)	6.541.969.418	6.068.045.119,19	6.855.870.707	422.712.801	493.080.962	17
Kamyon-Kamyonet/HCV-LCV	4.034.772.621	3.433.310.998,81	3.919.399.958	293.414.745	224.441.355	-24
Çekici/Truck-Tractor	116.912.332	71.336.634,88	77.907.407	17.957.398	18.105.294	1
Römork ve Yarı Römork/Trailer-Semi Trailer	147.247.613	195.093.536,78	218.649.302	2.204.025	1.429.079	-35
Tarım Traktörü/Farm Tractor	213.048.730	315.440.293,75	339.765.421	15.487.590	26.729.450	73
Toplam/Total	20.436.349.488	19.316.411.457	21.563.175.997	1.498.866.174	1.627.783.944	9

Kaynak: T.C Ekonomi Bakanlığı ÜİB Otomotiv Endüstrisi İhracatçıları Birliği



Firma Bazında İhracat (Adet)
Export Of member Companies (Unit)

Sektör Bazında İhracat (\$)
Exports on Sectorial Basis

FİRMALAR Companies	2012	2013	Ocak January	
			2013	2014
			OYAK RENAULT	227.162
HYUNDAI ASSAN	67.453	85.500	1.700	12.425
TOFAŞ	154.068	160.309	13.224	10.966
TOYOTA	63.549	86.908	4.593	8.889
FORD OTOSAN	191.149	208.722	18.551	6.155
TÜRK TRAKTÖR	14.572	14.402	774	822
HONDA TÜRKİYE	7.959	2.121	85	147
M. BENZ TÜRK	4.054	5.331	116	114
MAN TÜRKİYE	885	898	71	66
A.I.O.S.	943	770	73	52
HATTAT TARIM	859	594	9	42
TEMSA GLOBAL	856	663	27	21
KARSAN	10.994	10.120	1.087	6
OTOKAR	510	620	12	3
GENEL TOPLAM	745.013	843.466	58.448	52.287

Kaynak: OSD

Sıra No	Sektörler	2013 Toplam	Ocak			
			2013	2014	2014/2013 (%)	2014 (%) Pay
1	Otomotiv Endüstrisi	19.056.057	1.485.459	1.587.012	6,8	13,2
2	Kıymevi Maddeler ve Mamülleri	17.513.306	1.315.974	1.404.824	6,8	11,7
3	Hazırgiyim ve Konfeksiyon	16.038.094	1.392.632	1.589.828	14,2	13,2
4	Çelik	15.441.093	1.144.614	1.108.057	-3,2	9,2
6	Elektrik-Elektronik ve Makina	11.792.796	830.058	904.663	9,0	7,5
7	Tekstil ve Hammaddeleri	7.839.144	632.156	769.217	21,7	6,4
8	Demir ve Demir Dışı Metaller	6.464.263	519.511	595.399	14,6	5,0
9	Hububat, Bakliyat, Yağlı Tohumlar	5.882.530	500.356	615.412	23,0	5,1
10	Makine ve Aksamları	5.319.030	430.049	477.785	11,1	4,0
11	Madencilik Ürünleri	4.179.511	394.547	402.713	2,1	3,4
12	Ağaç Mamülleri, Orman Ürünleri	3.861.594	308.443	362.735	17,6	3,0
13	İklimlendirme Sanayi	3.793.972	275.662	330.050	19,7	2,7
14	Çimento ve Toprak Ürünleri	3.097.694	232.433	246.089	5,9	2,0
15	Yaş Meyve ve Sebze	2.180.176	223.137	220.050	-1,4	1,8
16	Mücevher	2.073.277	154.262	195.349	26,6	1,6
17	Halı	2.010.048	165.998	178.414	7,5	1,5
18	Fındık ve Mamülleri	1.796.990	178.057	154.801	-13,1	1,3
19	Su Ürünleri ve Hayvansal Mamuller	1.661.916	171.196	210.311	22,8	1,8
20	Deri ve Deri Mamülleri	1.633.988	115.045	123.977	7,8	1,0
21	Kuru Meyve ve Mamülleri	1.364.650	106.857	116.496	9,0	1,0
22	Savunma Sanayi	1.260.810	72.558	107.514	48,2	0,9
23	Meyve Sebze Mamülleri	1.259.674	94.906	111.599	17,6	0,9
24	Tütün ve Mamülleri	845.418	66.631	109.534	64,4	0,9
25	Gemi ve Yat	810.936	48.953	54.471	11,3	0,5
26	Zeytin ve Zeytinyağ	201.151	44.842	24.538	-45,3	0,2
27	Diğer Sanayi Ürünleri	82.364	7.045	6.961	-1,2	0,1
28	Süs Bitkileri	73.154	5.248	7.359	40,2	0,1
TOPLAM		137.533.636	10.916.629	12.015.158	10,1	100,0

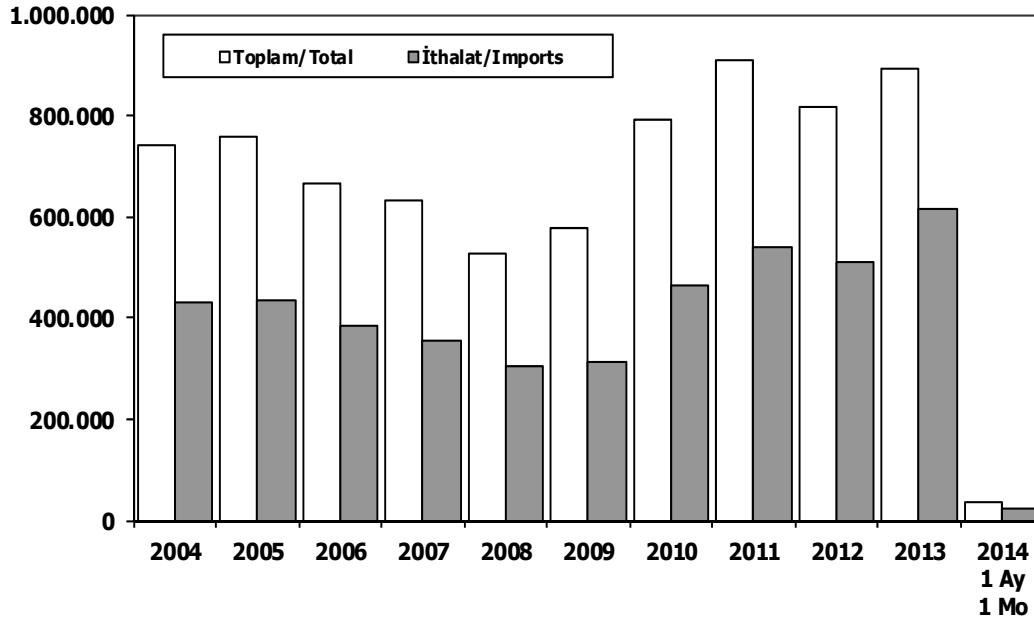
*(Hava, kara, deniz ve demiryolu taşıtları toplamı)

Kaynak: TİM

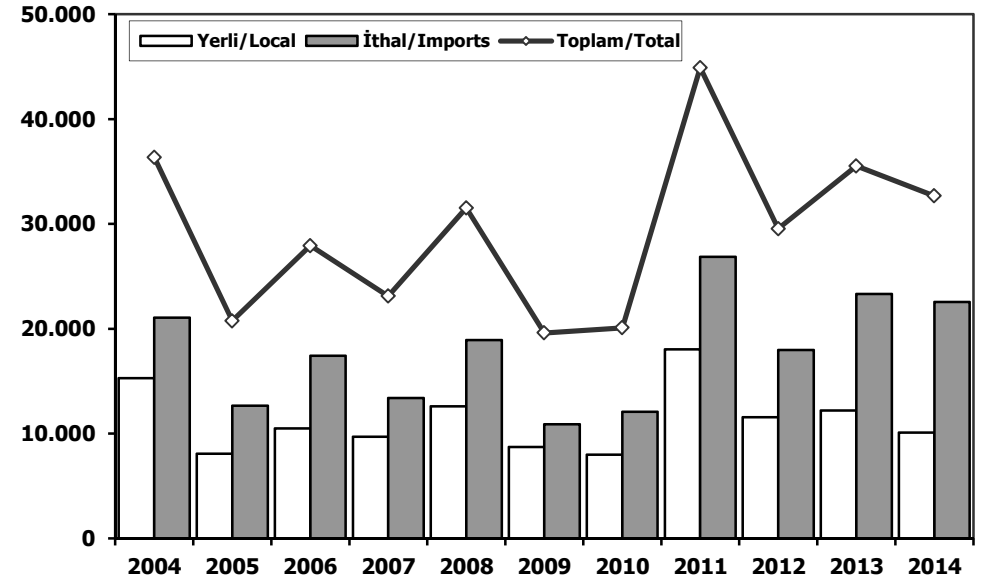
First 5 Sectors:

- 1- Transport Vehicle and Component Industry
- 2-Chemical Articles and Products
- 3-Ready Wear and Confection
- 4-Steel
- 5-Electric-Electronic and Machine

Toplam Pazar (Otomobil+T.Araç) Total Market (P.Cars+C.V)



Hafif Araçlar Pazarı (2004-2014 Ocak) LV Market (2004-2014 January)

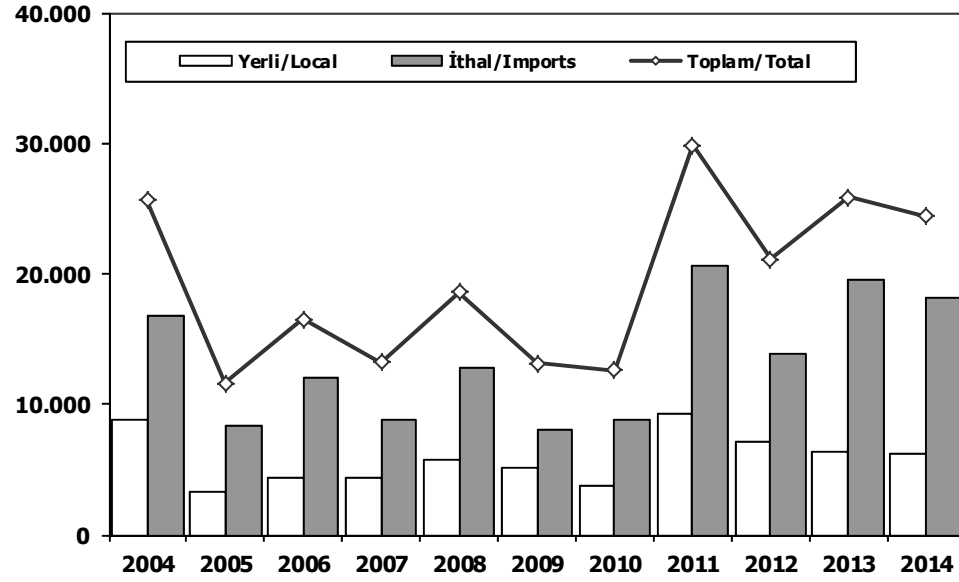


	2004	2005	2006	2007	2008	2009	2010	2011	2012	2013	2013 1 Ay 1 Mo	2014 1 Ay 1 Mo
Toplam/Total	741.269	758.537	665.515	634.206	526.544	575.869	793.172	910.867	817.620	893.124	37.140	34.288
İthalat/Imports	430.204	436.033	382.460	355.752	306.087	313.921	465.408	538.532	511.694	615.609	23.666	22.680
İthalat/Imports (%)	58	57	57	56	58	55	59	59	63	69	64	66

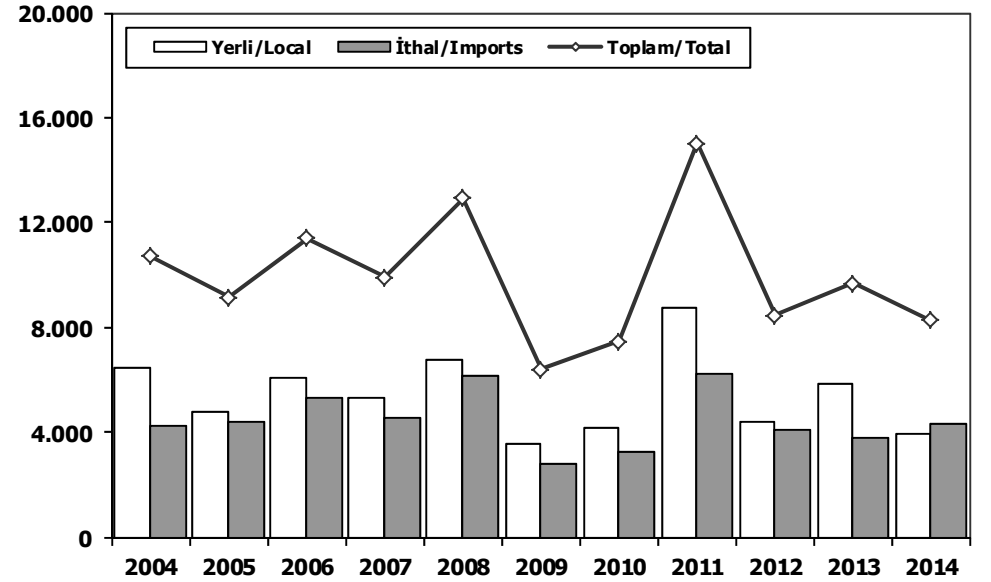
	2004	2005	2006	2007	2008	2009	2010	2011	2012	2013	2014
Yerli/Local	15.288	8.072	10.496	9.710	12.593	8.719	8.005	18.023	11.570	12.216	10.106
İthal/Imports	21.064	12.675	17.421	13.407	18.934	10.887	12.090	26.869	17.975	23.307	22.564
Toplam/Total	36.352	20.747	27.917	23.117	31.527	19.606	20.095	44.892	29.545	35.523	32.670
İthalat/Imports (%)	58	61	62	58	60	56	60	60	61	66	69



Otomobil Pazarı (2004-2014 Ocak) P.Cars Market (2004-2014 January)

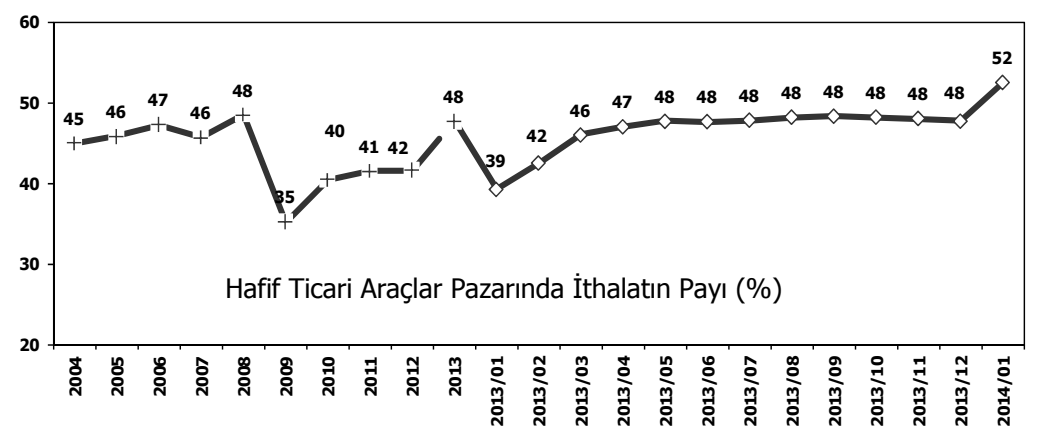
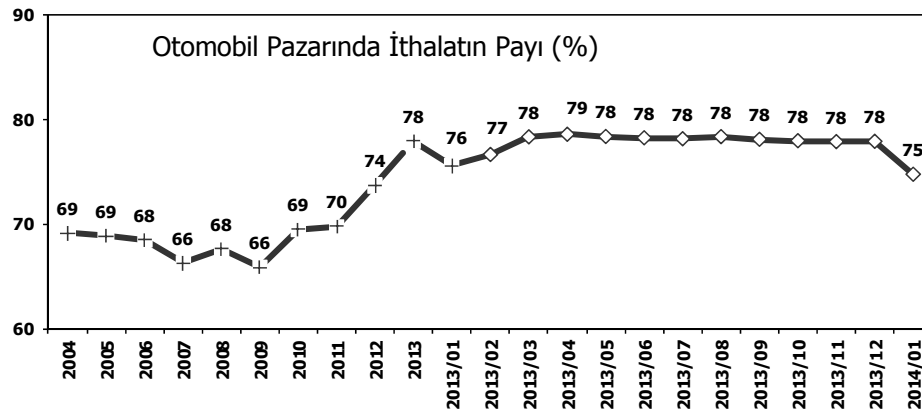


Hafif Ticari Araçlar Pazarı (2004-2014 Ocak) Light Commercial Vehicle Market (2004-2014 January)



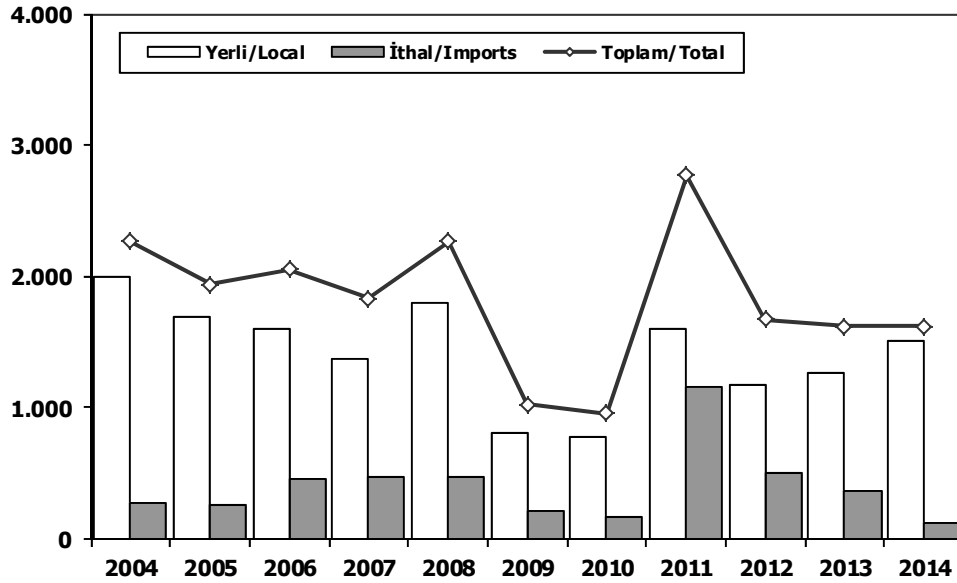
	2004	2005	2006	2007	2008	2009	2010	2011	2012	2013	2014
Yerli/Local	8.812	3.300	4.434	4.381	5.792	5.129	3.789	9.237	7.190	6.326	6.160
İthal/Imports	16.813	8.295	12.072	8.805	12.796	8.044	8.805	20.631	13.887	19.509	18.208
Toplam/Total	25.625	11.595	16.506	13.186	18.588	13.173	12.594	29.868	21.077	25.835	24.368
İthalat/Imports (%)	66	72	73	67	69	61	70	69	66	76	75

	2004	2005	2006	2007	2008	2009	2010	2011	2012	2013	2014
Yerli/Local	6.476	4.772	6.062	5.329	6.801	3.590	4.216	8.786	4.380	5.890	3.946
İthal/Imports	4.251	4.380	5.349	4.602	6.138	2.843	3.285	6.238	4.088	3.798	4.356
Toplam/Total	10.727	9.152	11.411	9.931	12.939	6.433	7.501	15.024	8.468	9.688	8.302
İthalat/Imports (%)	40	48	47	46	47	44	44	42	48	39	52



Ağır Ticari Araçlar Pazarı (2004-2014 Ocak)

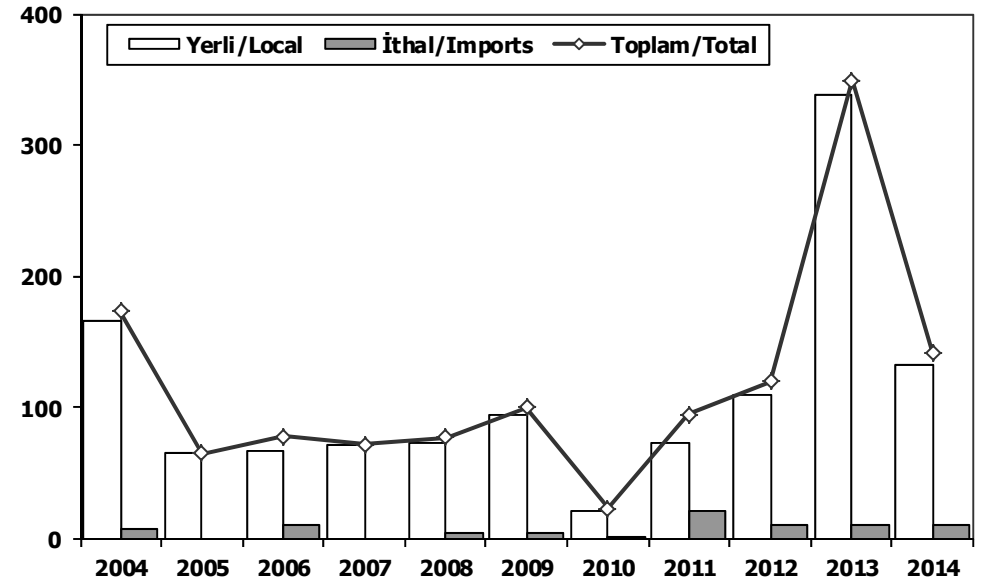
HCV Market (2004-2014 January)



	2004	2005	2006	2007	2008	2009	2010	2011	2012	2013	2014
Yerli/Local	1.994	1.686	1.593	1.368	1.794	812	781	1.602	1.168	1.258	1.502
İthal/Imports	275	254	459	465	471	213	174	1.164	506	359	116
Toplam/Total	2.269	1.940	2.052	1.833	2.265	1.025	955	2.766	1.674	1.617	1.618
İthalat/Imports (%)	12	13	22	25	21	21	18	42	30	22	7

Otobüs Pazarı (2004-2014 Ocak)

Bus Market (2004-2014 January)

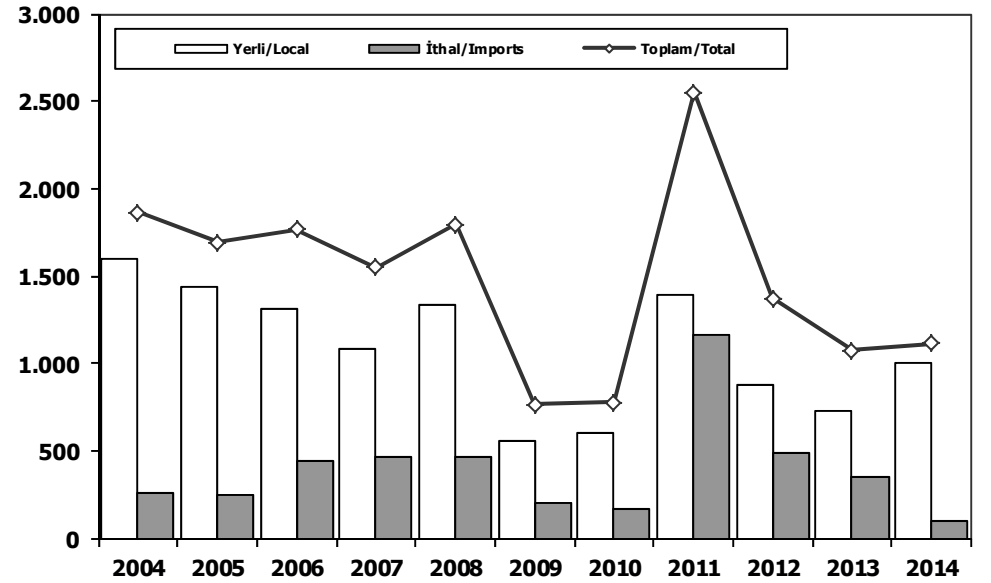
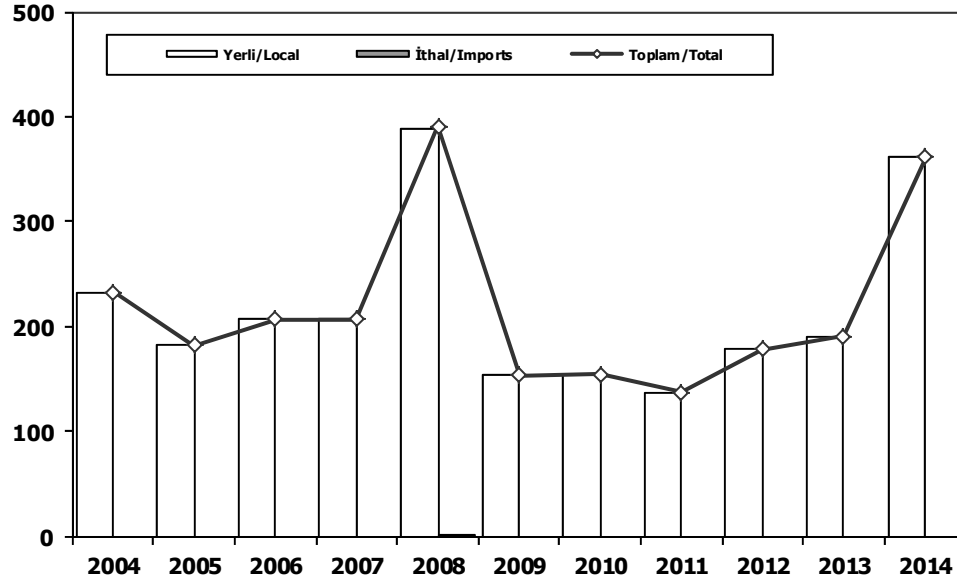


	2004	2005	2006	2007	2008	2009	2010	2011	2012	2013	2014
Yerli/Local	166	65	67	72	73	95	22	73	109	339	132
İthal/Imports	7	0	11	0	4	5	1	22	11	10	10
Toplam/Total	173	65	78	72	77	100	23	95	120	349	142
İthalat/Imports (%)	4	0	14	0	5	5	4	23	9	3	7



Midibüs Pazarı (2004-2014 Ocak) (7-9 mt/25-35 Kişilik) Midibus (2004-2014 January) Market (7-9 mt/25-35 Passengers)

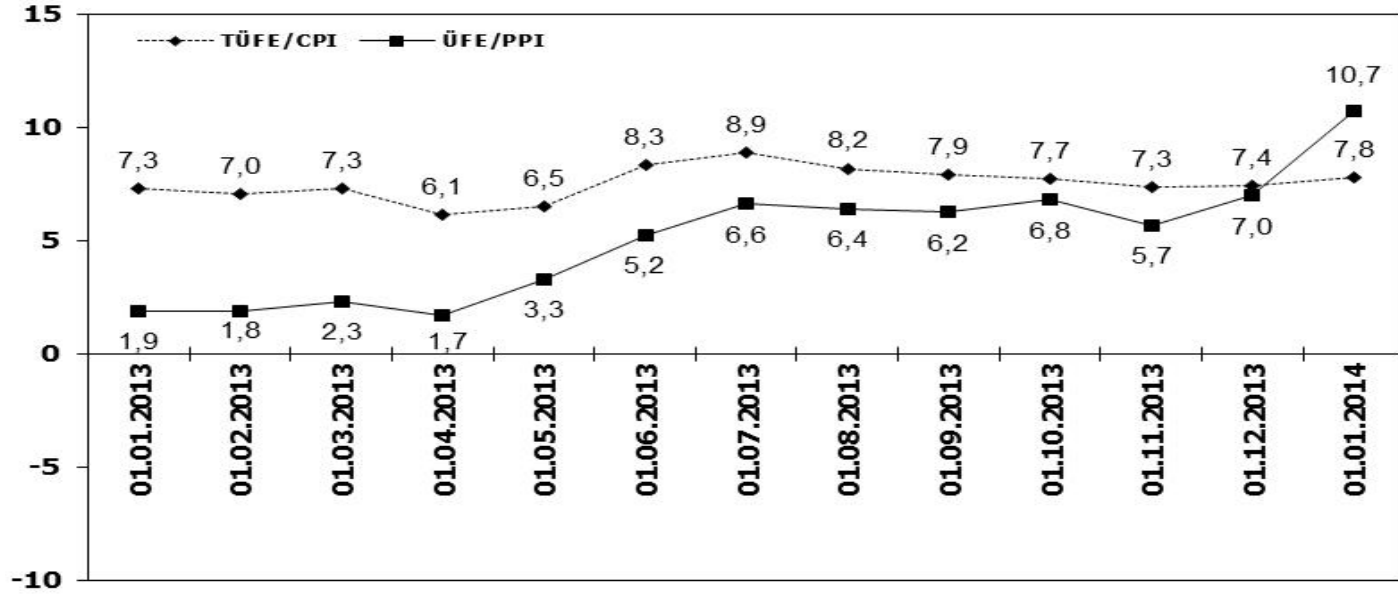
Kamyon Pazarı (2004-2014 Ocak) Truck Market (2004-2014 January)



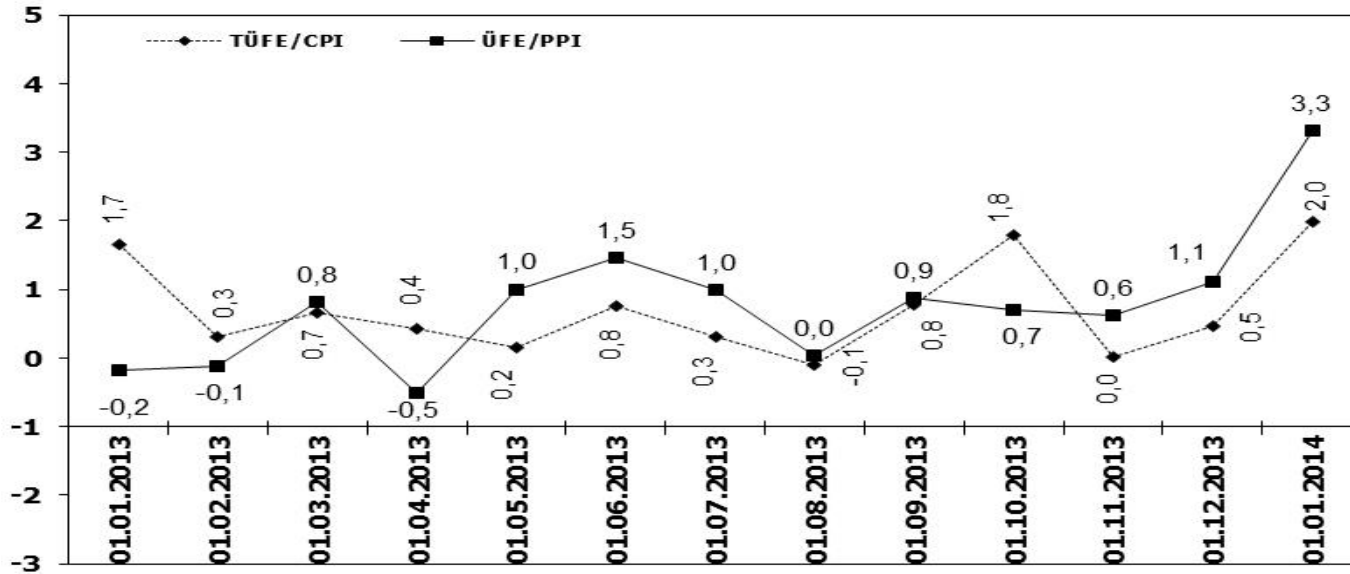
	2004	2005	2006	2007	2008	2009	2010	2011	2012	2013	2014
Yerli/Local	233	182	207	207	389	154	155	138	179	191	361
İthal/Imports	0	0	0	0	2	0	0	0	0	0	0
Toplam/Total	233	182	207	207	391	154	155	138	179	191	361
İthalat/Imports (%)	0	0	0	0	1	0	0	0	0	0	0

	2004	2005	2006	2007	2008	2009	2010	2011	2012	2013	2014
Yerli/Local	1.595	1.439	1.319	1.089	1.332	563	604	1.391	880	728	1.009
İthal/Imports	268	254	448	465	465	208	173	1.161	495	349	106
Toplam/Total	1.863	1.693	1.767	1.554	1.797	771	777	2.552	1.375	1.077	1.115
İthalat/Imports (%)	14	15	25	30	26	27	22	45	36	32	10

TÜFE ve ÜFE'nin Yıllık Değişimi (%) CPI and PPI Yearly Changes (%)



TÜFE ve ÜFE'nin Aylık Değişimi (%) CPI and PPI Monthly Changes (%)





2014 Yılı İthal Hafif Araç Satışları 2013 Light Vehicles Import Sales

	2013 TOPLAMI 2013 Total	1	2	3	4	5	6	7	8	9	10	11	12	2014 TOPLAMI 2014 Total
VOLKSWAGEN	88.304	4.242	0	0	0	0	0	0	0	0	0	0	0	4.242
RENAULT	32.904	1.719	0	0	0	0	0	0	0	0	0	0	0	1.719
OPEL	55.719	1.672	0	0	0	0	0	0	0	0	0	0	0	1.672
FORD	58.405	1.389	0	0	0	0	0	0	0	0	0	0	0	1.389
DACIA	28.901	1.158	0	0	0	0	0	0	0	0	0	0	0	1.158
HYUNDAI	29.824	882	0	0	0	0	0	0	0	0	0	0	0	882
NISSAN	18.417	741	0	0	0	0	0	0	0	0	0	0	0	741
CITROEN	19.690	657	0	0	0	0	0	0	0	0	0	0	0	657
PEUGEOT	23.068	622	0	0	0	0	0	0	0	0	0	0	0	622
FIAT	10.913	587	0	0	0	0	0	0	0	0	0	0	0	587
MERCEDES	20.023	582	0	0	0	0	0	0	0	0	0	0	0	582
SEAT	11.065	536	0	0	0	0	0	0	0	0	0	0	0	536
KIA	13.195	483	0	0	0	0	0	0	0	0	0	0	0	483
SKODA	12.833	458	0	0	0	0	0	0	0	0	0	0	0	458
AUDI	14.987	455	0	0	0	0	0	0	0	0	0	0	0	455
TOYOTA	22.421	366	0	0	0	0	0	0	0	0	0	0	0	366
B.M.W	20.705	334	0	0	0	0	0	0	0	0	0	0	0	334
VOLVO	5.021	252	0	0	0	0	0	0	0	0	0	0	0	252
CHEVROLET	12.506	206	0	0	0	0	0	0	0	0	0	0	0	206
HONDA	3.394	142	0	0	0	0	0	0	0	0	0	0	0	142
SUBARU	1.101	120	0	0	0	0	0	0	0	0	0	0	0	120
PROTON	715	110	0	0	0	0	0	0	0	0	0	0	0	110
MITSUBISHI	1.488	83	0	0	0	0	0	0	0	0	0	0	0	83
SUZUKI	1.623	76	0	0	0	0	0	0	0	0	0	0	0	76
ALFA ROMEO	1.030	60	0	0	0	0	0	0	0	0	0	0	0	60
MINI (İngiliz)	1.557	51	0	0	0	0	0	0	0	0	0	0	0	51
PORSCHE	517	45	0	0	0	0	0	0	0	0	0	0	0	45
SSANGYONG	972	44	0	0	0	0	0	0	0	0	0	0	0	44
JEEP	973	31	0	0	0	0	0	0	0	0	0	0	0	31
MAZDA	1.377	30	0	0	0	0	0	0	0	0	0	0	0	30
LAND ROVER	1.323	26	0	0	0	0	0	0	0	0	0	0	0	26
CHERY	492	17	0	0	0	0	0	0	0	0	0	0	0	17
GEELY	623	12	0	0	0	0	0	0	0	0	0	0	0	12
LANCIA	782	8	0	0	0	0	0	0	0	0	0	0	0	8
MASERATI	40	6	0	0	0	0	0	0	0	0	0	0	0	6
SMART	110	4	0	0	0	0	0	0	0	0	0	0	0	4
INFINITI	37	1	0	0	0	0	0	0	0	0	0	0	0	1
TATA	326	1	0	0	0	0	0	0	0	0	0	0	0	1
TOPLAM	517.381	18.208	0	0	0	0	0	0	0	0	0	0	0	18.208

2014 YILI İTHAL HAFIF TİCARİ ARAÇ SATIŞLARI / Light Commercial Vehicles Import 2014

	2013 TOPLAMI 2013 Total	1	2	3	4	5	6	7	8	9	10	11	12	2014 TOPLAMI 2014 Total
VOLKSWAGEN	23.752	1.152	0	0	0	0	0	0	0	0	0	0	0	1.152
RENAULT	11.550	565	0	0	0	0	0	0	0	0	0	0	0	565
DACIA	7.494	510	0	0	0	0	0	0	0	0	0	0	0	510
MERCEDES	10.421	490	0	0	0	0	0	0	0	0	0	0	0	490
FIAT	6.245	397	0	0	0	0	0	0	0	0	0	0	0	397
CITROEN	6.679	234	0	0	0	0	0	0	0	0	0	0	0	234
MITSUBISHI	3.592	229	0	0	0	0	0	0	0	0	0	0	0	229
ISUZU	2.587	228	0	0	0	0	0	0	0	0	0	0	0	228
TOYOTA	2.413	139	0	0	0	0	0	0	0	0	0	0	0	139
HYUNDAI	1.480	117	0	0	0	0	0	0	0	0	0	0	0	117
PEUGEOT	8.323	78	0	0	0	0	0	0	0	0	0	0	0	78
IVECO	2.204	77	0	0	0	0	0	0	0	0	0	0	0	77
SSANGYONG	859	63	0	0	0	0	0	0	0	0	0	0	0	63
KIA	453	47	0	0	0	0	0	0	0	0	0	0	0	47
TATA	316	20	0	0	0	0	0	0	0	0	0	0	0	20
NISSAN	878	9	0	0	0	0	0	0	0	0	0	0	0	9
FORD	657	1	0	0	0	0	0	0	0	0	0	0	0	1
TOPLAM	89.903	4.356	0	0	0	0	0	0	0	0	0	0	0	4.356