



OTOMOTİV SANAYİİ DERNEĞİ
AUTOMOTIVE MANUFACTURERS ASSOCIATION

AYLIK RAPOR

Automotive Industry Monthly Report

Mart / March 2016

- **Üretim/Production**
- **Satış/Sales**
- **İthalat/Imports**
- **İhracat/Exports**

OSD "OICA" Üyesidir



OSD is a Member of "OICA"

2016 Mart Ayı Özeti / 2016 March Summary

		MART / MARCH			3 AY / 3 MONTHS			SON 12 AYLIK / YoY		
		2015	2016	2016/2015 (%)	2015	2016	2016/2015 (%)	2015	2016	2016/2015 (%)
Üretim/ Production	Toplam/ Total	123.119	127.792	4	334.705	346.072	3	1.017.529	1.121.680	10
	Otomobil/ P.Cars	72.781	77.051	6	198.433	207.996	5	765.413	800.590	5
Pazar/ Market	Toplam/ Total	89.121	85.213	-4	184.230	173.176	-6	869.219	1.000.140	15
	Otomobil/ P.Cars	61.676	63.975	4	126.991	127.921	1	624.975	726.526	16
İthalat/ Import	Toplam/ Total	56.803	58.164	2	115.540	115.751	0	556.728	658.901	18
	Otomobil/ P.Cars	45.445	47.706	5	92.246	93.958	2	454.223	539.427	19
İhracat/ Export	Toplam/ Total	89.956	98.820	10	249.838	266.317	7	761.653	811.297	7
	Otomobil/ P.Cars	58.872	60.631	3	158.642	159.401	0	604.195	605.442	0
İhracat / Export (\$)	Toplam/ Total **	1.809.103.614	2.083.287.918	15	5.315.489.279	5.657.785.789	6	22.429.887.976	21.707.237.375	-3
	Otomobil/ P.Cars	616.480.120	632.997.536	3	1.759.031.380	1.591.090.753	-10	7.210.013.060	6.718.028.256	-7

PARAMETRELER / PARAMETERS		MART / MARCH			3 AY / 3 MONTHS			SON 12 AYLIK / YoY		
		2015	2016	2016/2015 (%)	2015	2016	2016/2015 (%)	2015	2016	2016/2015 (%)
ÜFE/ PPI		1,05	0,40	-	2,60	0,75	-	3,41	5,64	-
TÜFE/ CPI		1,19	-0,04	-	3,03	1,75	-	7,61	7,96	-
Sanayi Endeksi/ Industry Index		0,98	0,63	-	2,84	1,33	-	3,93	6,35	-
\$ (*)		2,6116	2,8830	10	2,5111	2,9315	17	2,2652	2,8363	25
EURO (*)		2,8055	3,2034	14	2,7854	3,2153	15	2,8294	3,1255	10
Japon Yeni (*)		2,1634	2,5435	18	2,0977	2,5029	19	2,0398	2,3450	15

(*) Ortalama Değerler / Average Values

(**) Toplam Sanayi / Total Industry Including Components

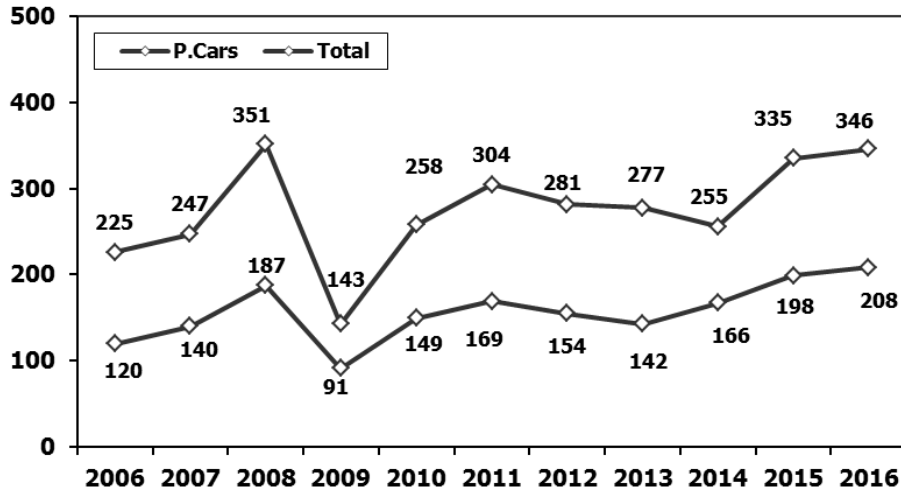
2015/2016 Yılları Üretim 2015/2016 Production

K.KAMYON : AYA 3.5-12 Ton (L.Truck:GVW 3.5-12 Ton)

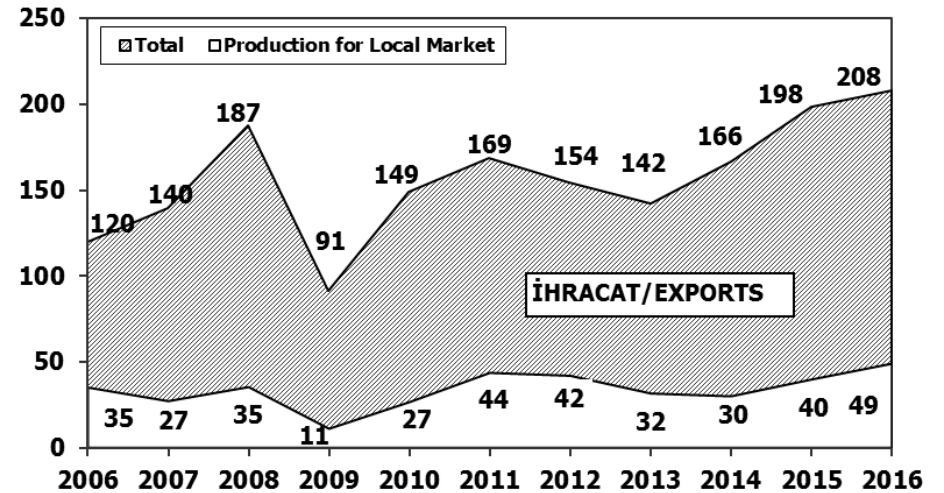
B.KAMYON : AYA 12 Ton'dan Büyük (M.Truck:GVW 12 Ton And Up)

TİPLER	MART AYI ÜRETİMİ March Production		3 AYLIK ÜRETİM 3 Months Production		DEĞİŞİM % Percent Change %	
	2015	2016	2015	2016	MART March	3 AY 3 Months
OTOMOBİL - Pass.Car	72.781	77.051	198.433	207.996	6	5
TİCARİ ARAÇLAR - Commercial Vehicles	50.338	50.741	136.272	138.076	1	1
* B. KAMYON - M. Truck	2.804	1.642	7.655	3.007	-41	-61
* K. KAMYON - L. Truck	288	84	761	89	-71	-88
* KAMYONET - Pick Up	38.605	46.515	107.959	128.089	20	19
* OTOBÜS - Bus	753	788	1.990	2.088	5	5
* MİNİBÜS - Minibus	7.301	1.400	16.313	4.178	-81	-74
* MİDİBÜS - Midibus	587	312	1.594	625	-47	-61
TAŞIT ARAÇLARI TOPLAM - MV Total	123.119	127.792	334.705	346.072	4	3
TRAKTÖR - F.Tractor	4.641	5.318	12.612	14.025	15	11
GENEL TOPLAM - Grand Total	127.760	133.110	347.317	360.097	4	4

Toplam Üretim ve Otomobil Üretimi (x1000) (Ocak-Mart)
Total & P.Cars Production (x1000) (January-March)

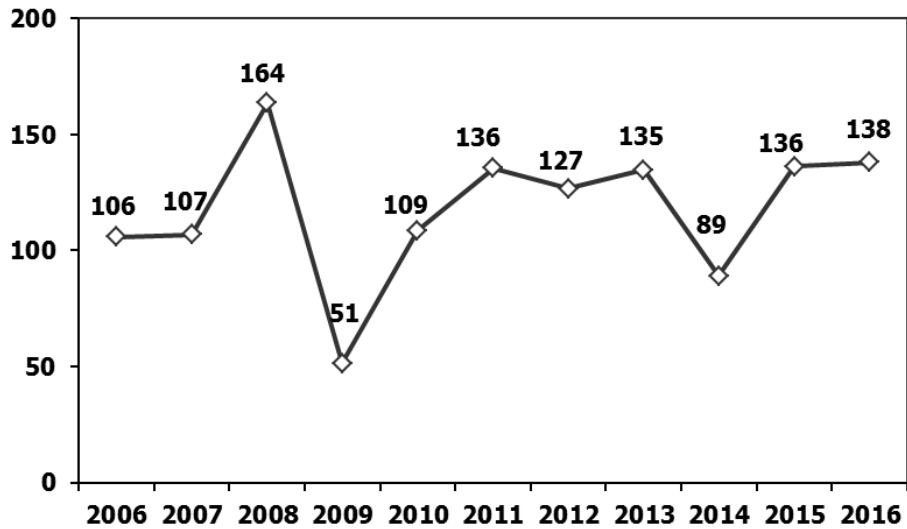


Otomobil Üretimi ve İhracat (x1000) (Ocak-Mart)
P.Cars Production & Exports (x1000) (January-March)

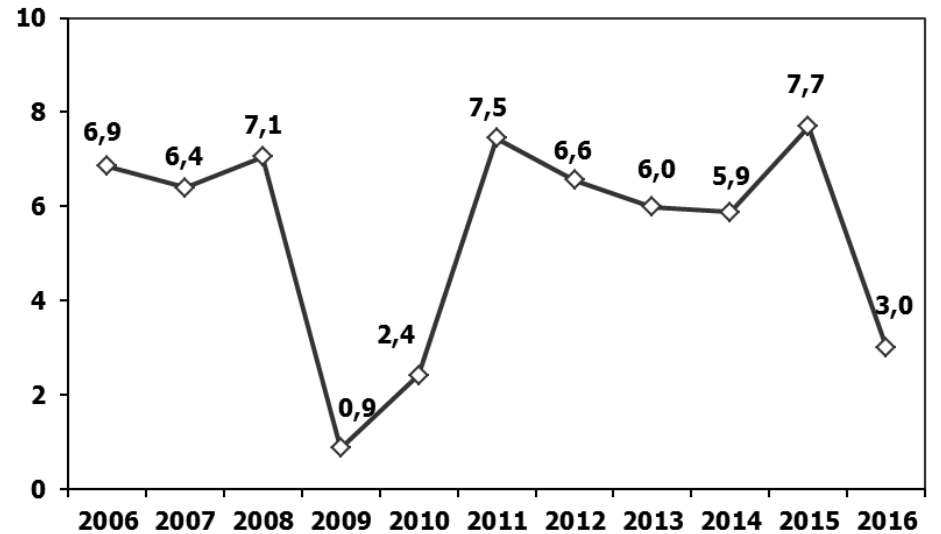


Ticari Araç Üretimi (x1000) (Ocak-Mart)

Commercial Vehicle Production (x1000) (January-March)

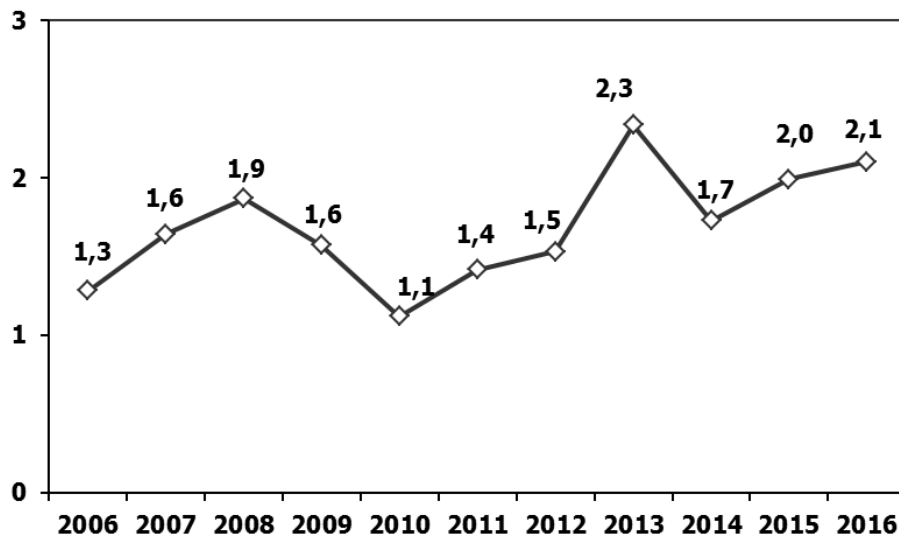


(AYA >12 Ton) **Büyük Kamyon Üretimi** (x1000) (Ocak-Mart)
(GVW >12 Ton) Heavy Truck Production (x1000) (January-March)



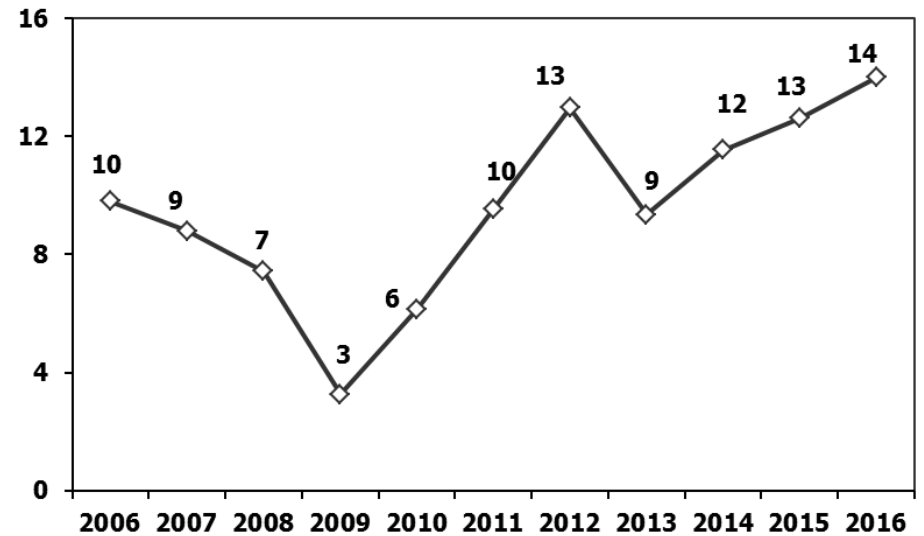
Otobüs Üretimi (x1000) (Ocak-Mart)

Bus Production (x1000) (January-March)



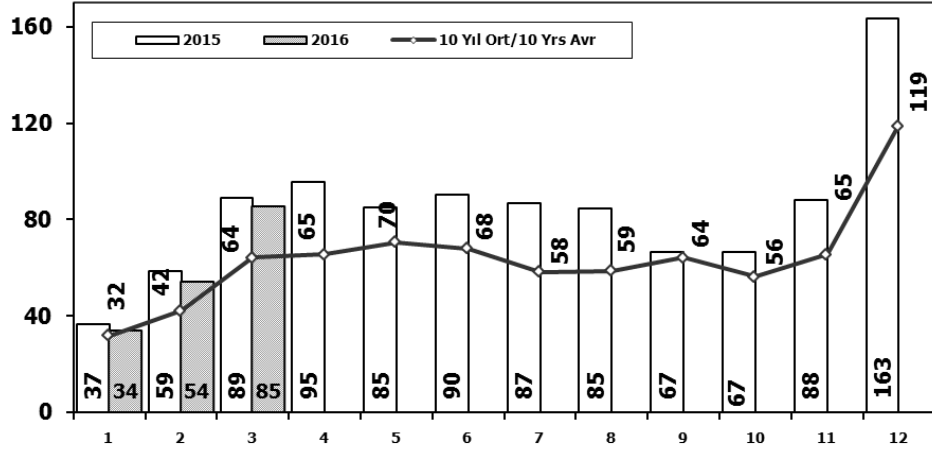
Traktör Üretimi (x1000) (Ocak-Mart)

F. Tractor Production (x1000) (January-March)



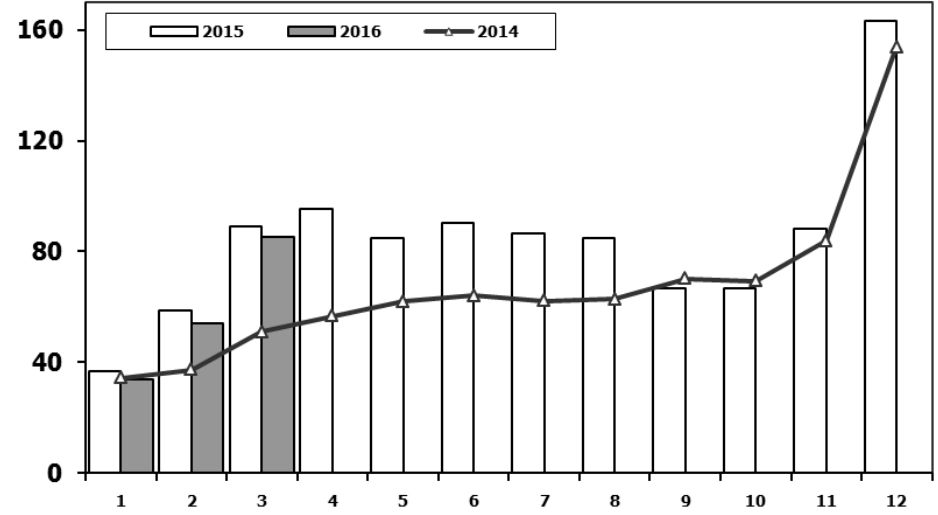
Toplam Pazarın Analizi (x1000)

Total Market Analysis (x1000)



Toplam Pazar (x1000)

Total Market (x1000)

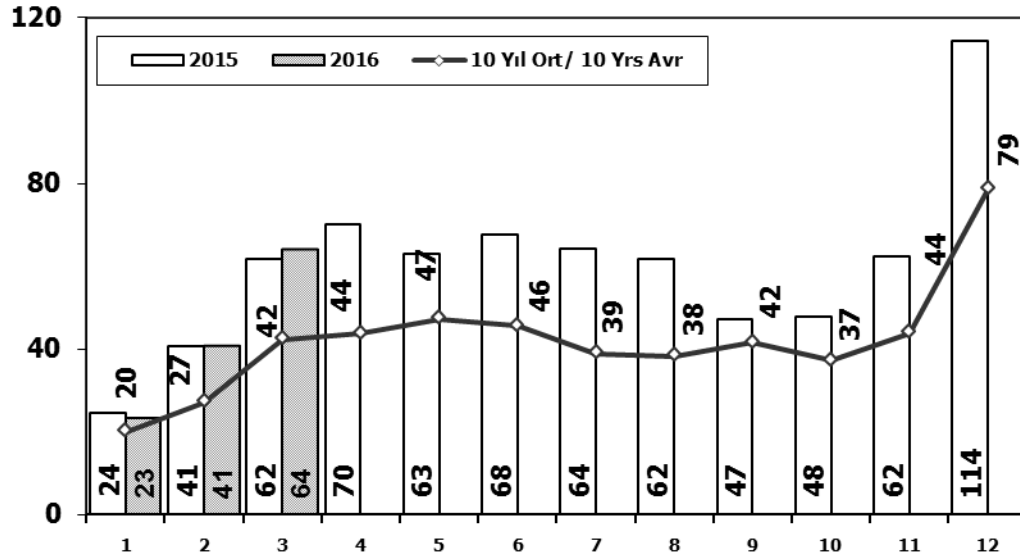


Aylar / Months	10 Yil Ort. 10 Yrs Avr. (x1000)	2016 (x1000)	%
1	31,7	33,7	6,3
2	42,3	54,2	28,3
3	64,3	85,2	32,6
Total	138,3	173,2	25,2

	1	2	3	4	5	6	7	8	9	10	11	12	3 Ay/Mo	Total
2006	29.969	44.646	65.090	68.853	83.289	58.203	40.037	47.374	49.629	39.805	55.898	82.722	139.705	665.515
2007	24.950	31.702	45.488	45.633	51.255	51.661	50.117	54.171	50.078	56.058	67.017	106.076	102.140	634.206
2008	33.792	38.121	56.814	50.967	51.627	49.393	44.692	46.592	46.829	35.147	28.152	44.418	128.727	526.544
2009	20.631	22.846	56.531	54.426	64.887	63.102	30.246	37.092	83.403	22.117	29.202	91.386	100.008	575.869
2010	21.050	32.313	53.828	57.079	61.628	63.390	63.718	64.645	66.601	76.780	77.406	154.734	107.191	793.172
2011	47.658	62.348	83.333	82.071	85.093	85.863	65.364	61.378	63.643	72.640	67.195	134.281	193.339	910.867
2012	31.219	43.827	68.957	66.014	74.820	74.781	65.122	60.848	73.197	62.677	75.045	121.113	144.003	817.620
2013	37.140	50.931	72.688	77.015	85.421	77.771	74.726	67.383	71.037	60.399	83.017	135.596	160.759	893.124
2014	34.225	37.308	50.964	56.766	61.909	63.952	62.206	62.839	70.180	69.259	83.937	153.941	122.497	807.486
2015	36.576	58.533	89.121	95.431	84.875	90.463	86.625	84.683	66.622	66.520	88.043	163.432	184.230	1.010.924
2016	33.740	54.223	85.213										173.176	173.176

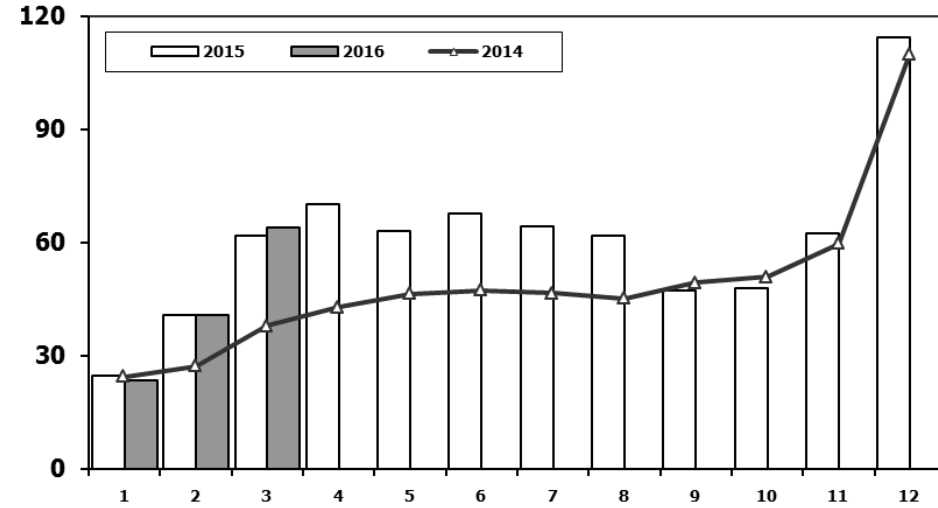
Otomobil Pazarının Analizi (x1000)

P.Cars Market Analysis (x1000)



Otomobil Pazarı (x1000)

P.Cars Market (x1000)

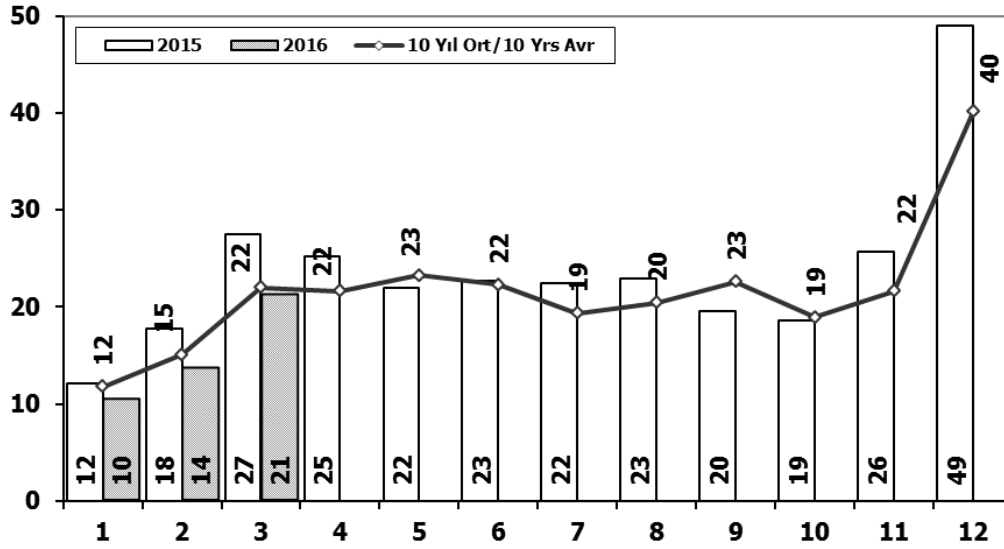


Aylar / Months	10 Yil Ort. 10 Yrs Avr. (x1000)	2016 (x1000)	%
1	20,0	23,4	17,0
2	27,1	40,6	49,5
3	42,3	64,0	51,4
Total	89,4	127,9	43,1

	1	2	3	4	5	6	7	8	9	10	11	12	3 Ay/Mo	Total
2006	16.506	24.929	36.996	40.177	48.521	32.982	22.653	24.873	27.517	21.237	30.477	46.351	78.431	373.219
2007	13.186	17.212	24.336	25.204	29.067	30.126	28.246	28.469	27.662	32.569	39.643	61.745	54.734	357.465
2008	18.588	21.196	34.147	30.313	31.477	28.724	25.530	26.102	27.053	19.788	17.201	25.879	73.931	305.998
2009	13.173	14.492	40.622	36.202	44.188	41.019	16.637	22.537	52.162	13.828	17.781	57.178	68.287	369.819
2010	12.594	20.651	33.958	36.549	40.467	42.086	41.399	42.222	42.477	47.859	50.061	99.461	67.203	509.784
2011	29.868	39.004	54.023	53.835	56.302	56.714	43.518	38.875	39.964	47.508	44.951	88.957	122.895	593.519
2012	21.077	29.189	47.270	45.645	50.460	50.849	44.531	41.236	49.360	43.440	52.297	80.926	97.536	556.280
2013	25.835	36.814	51.785	56.999	62.383	58.290	55.712	51.611	52.925	46.985	64.117	101.199	114.434	664.655
2014	24.368	27.167	37.812	42.769	46.379	47.278	46.602	45.131	49.262	50.814	59.695	110.054	89.347	587.331
2015	24.498	40.817	61.676	70.211	62.878	67.766	64.218	61.753	47.088	47.954	62.397	114.340	126.991	725.596
2016	23.358	40.588	63.975										127.921	127.921

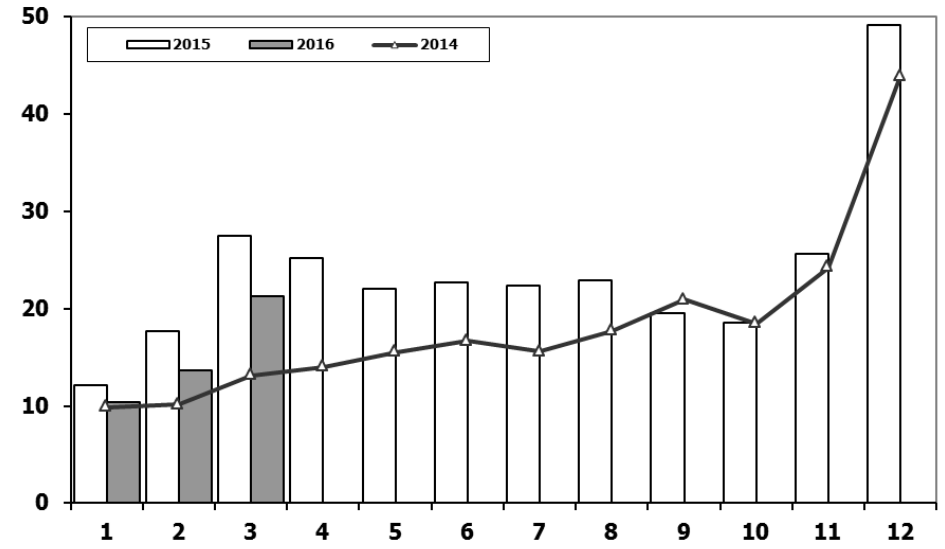
Ticari Araç Pazarının Analizi (x1000)

CV Market Analysis (x1000)



Ticari Araç Pazarı (x1000)

CV Total Market (Local + Imports) (x1000)

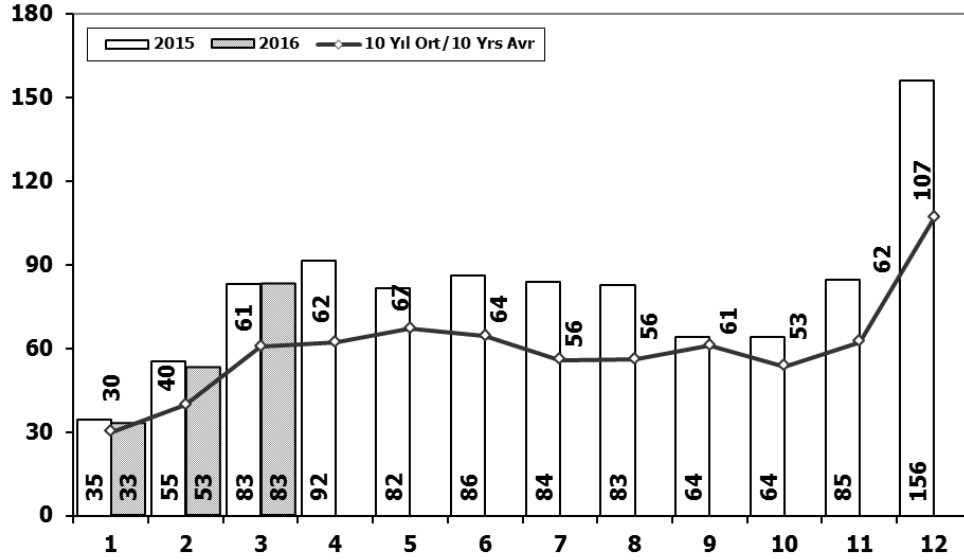


Aylar / Months	10 Yil Ort. 10 Yrs Avr. (x1000)	2016 (x1000)	%
1	11,8	10,4	-11,7
2	15,1	13,6	-9,8
3	22,0	21,2	-3,5
Total	48,9	45,3	-7,4

	1	2	3	4	5	6	7	8	9	10	11	12	3 Ay/Mo	Total
2006	13.463	19.717	28.094	28.676	34.768	25.221	17.384	22.501	22.112	18.568	25.421	36.371	61.274	292.296
2007	11.764	14.490	21.152	20.429	22.188	21.535	21.871	25.702	22.416	23.489	27.374	44.331	47.406	276.741
2008	15.204	16.925	22.667	20.654	20.150	20.669	19.162	20.490	19.776	15.359	10.951	18.539	54.796	220.546
2009	7.458	8.354	15.909	18.224	20.699	22.083	13.609	14.555	31.241	8.289	11.421	34.208	31.721	206.050
2010	8.456	11.662	19.870	20.530	21.161	21.304	22.319	22.423	24.124	28.921	27.345	55.273	39.988	283.388
2011	17.790	23.344	29.310	28.236	28.791	29.149	21.846	22.503	23.679	25.132	22.244	45.324	70.444	317.348
2012	10.142	14.638	21.687	20.369	24.360	23.932	20.591	19.612	23.837	19.237	22.748	40.187	46.467	261.340
2013	11.305	14.117	20.903	20.016	23.038	19.481	19.014	15.772	18.112	13.414	18.900	34.397	46.325	228.469
2014	9.857	10.141	13.152	13.997	15.530	16.674	15.604	17.708	20.918	18.445	24.242	43.887	33.150	220.155
2015	12.078	17.716	27.445	25.220	21.997	22.697	22.407	22.930	19.534	18.566	25.646	49.092	57.239	285.328
2016	10.382	13.635	21.238										45.255	45.255

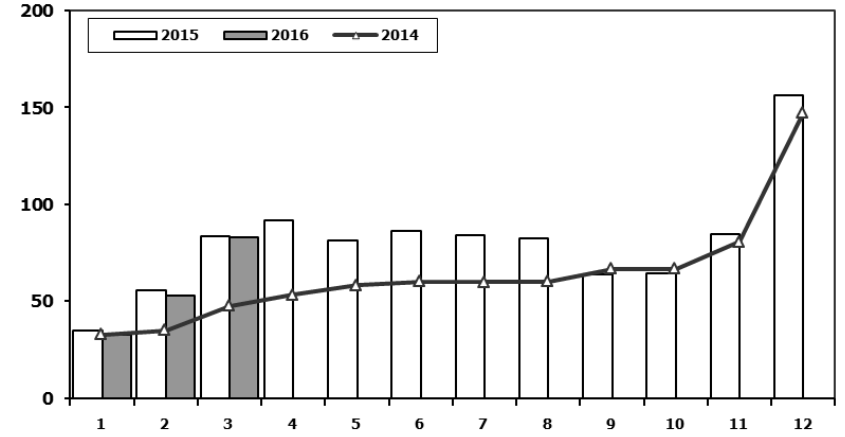
Hafif Araç Pazarının Analizi (x1000)

LV Market Analysis (x1000)



Hafif Araç Pazarı (x1000)

LV Total Market (Local + Imports) (x1000)

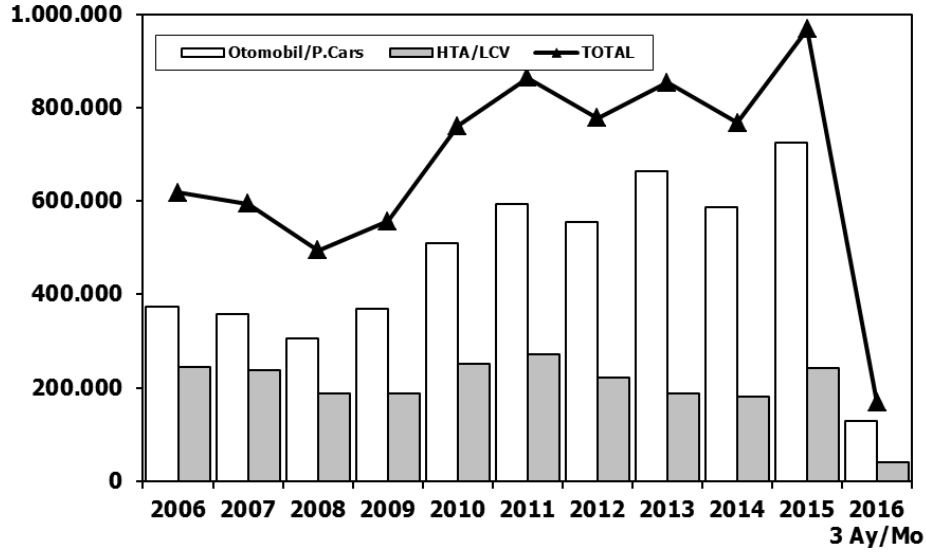


Aylar / Months	10 Yil Ort. 10 Yrs Avr. (x1000)	2016 (x1000)	%
1	30,0	32,7	9,2
2	39,7	52,8	33,1
3	60,5	82,9	37,0
Total	130,2	168,5	29,4

	1	2	3	4	5	6	7	8	9	10	11	12	3 Ay/Mo	Total
2006	27.917	40.938	60.052	64.038	78.229	54.355	37.251	43.767	46.109	36.542	51.867	76.787	128.907	617.852
2007	23.117	29.184	41.890	42.366	47.938	48.674	47.490	50.558	46.581	52.725	63.313	100.926	94.191	594.762
2008	31.527	35.251	53.649	47.701	48.598	46.324	42.156	43.670	43.932	32.884	26.253	42.078	120.427	494.023
2009	19.606	21.742	55.111	52.640	63.191	61.067	28.845	35.609	81.397	21.033	27.962	88.923	96.459	557.126
2010	20.095	31.172	51.769	54.946	59.377	60.896	61.345	61.764	63.814	73.404	73.962	148.369	103.036	760.913
2011	44.892	58.663	78.403	77.695	80.646	81.573	63.044	58.406	60.129	69.421	63.657	127.910	181.958	864.439
2012	29.545	41.324	64.884	62.949	70.863	71.067	62.304	58.148	69.629	59.938	71.710	115.400	135.753	777.761
2013	35.523	48.307	68.774	73.575	81.468	74.096	71.596	65.043	67.963	58.014	79.301	129.718	152.604	853.378
2014	32.670	35.021	47.581	53.305	58.121	60.163	59.907	60.199	66.531	66.573	80.621	146.989	115.272	767.681
2015	34.615	55.331	83.302	91.602	81.542	86.158	83.836	82.577	64.025	64.255	84.601	156.173	173.248	968.017
2016	32.713	52.825	82.948										168.486	168.486

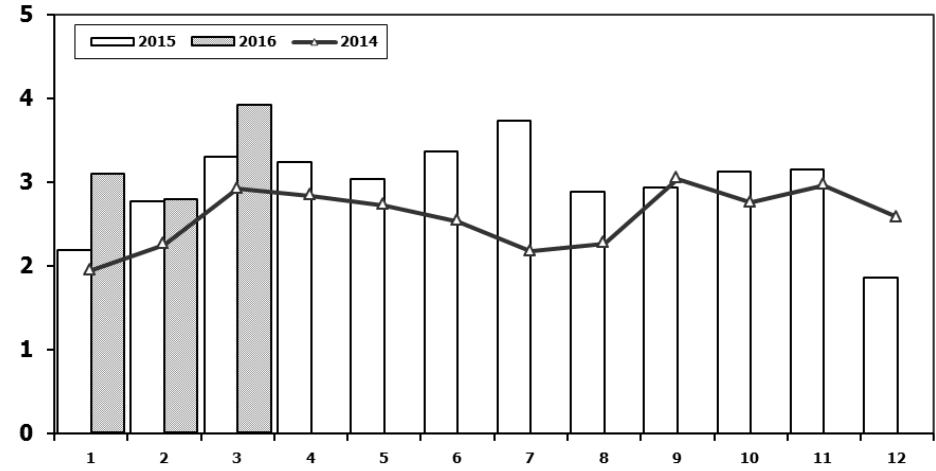
Hafif Araç Pazarı (AYA < 3.5 Ton)

Light Vehicle Market (GVW < 3.5 Ton)



Traktör Pazarı (x1000)

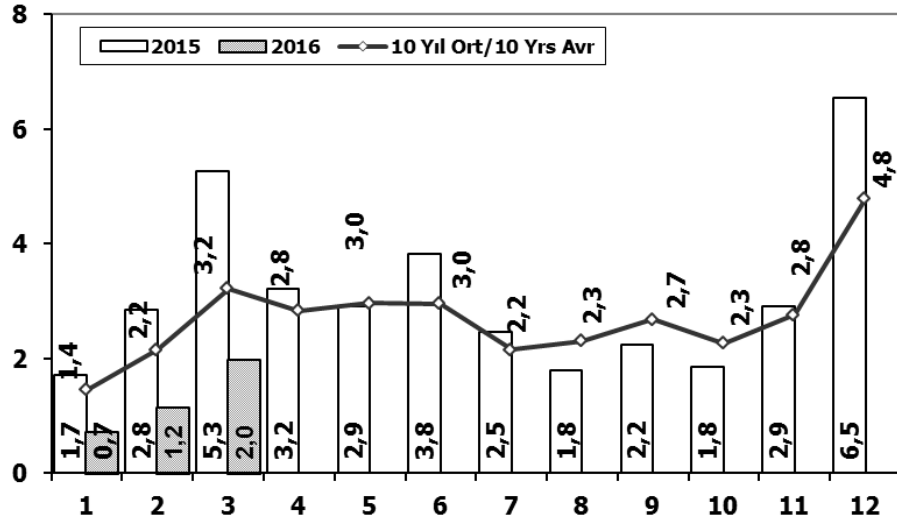
F.Tractor Market (x1000)



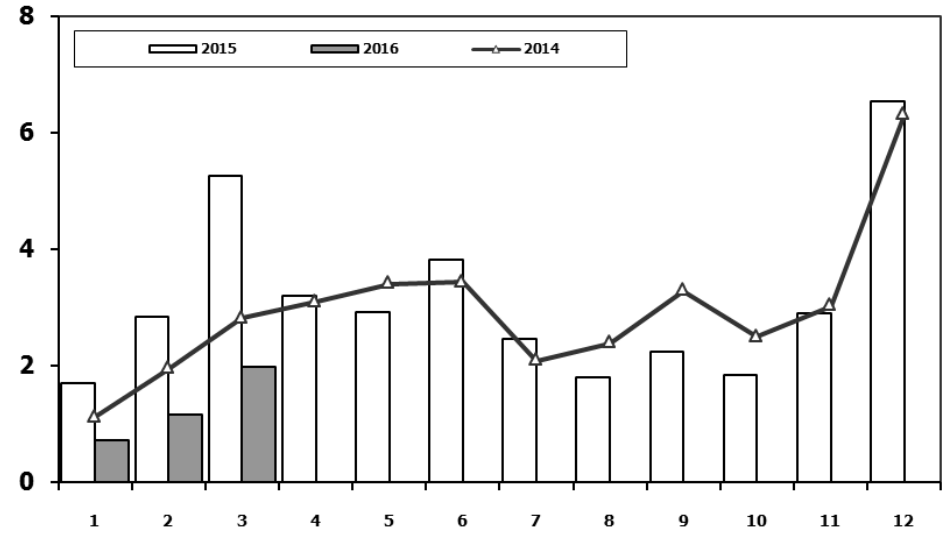
	2006	2007	2008	2009	2010	2011	2012	2013	2014	2015	2016 3 Ay/Mo
Otomobil/ P.Cars	373.219	357.465	305.998	369.819	509.784	593.519	556.280	664.655	587.331	725.596	127.921
HTA / LCV	244.633	237.297	188.025	187.307	251.129	270.920	221.481	188.723	180.350	242.421	40.565
TOTAL	617.852	594.762	494.023	557.126	760.913	864.439	777.761	853.378	767.681	968.017	168.486
HTA / LCV (%)	40	40	38	34	33	31	28	22	23	25	24

	1	2	3	4	5	6	7	8	9	10	11	12	3 Ay/Mo	Total
2006	1.578	2.493	2.746	2.841	3.561	2.356	1.685	2.177	2.756	1.915	2.353	1.925	6.817	28.386
2007	1.812	1.778	2.063	2.107	2.266	1.853	1.653	2.065	2.372	2.239	2.231	1.602	5.653	24.041
2008	1.510	1.427	1.933	1.692	1.689	1.592	1.275	924	904	609	707	359	4.870	14.621
2009	267	344	388	638	759	828	741	534	586	765	725	715	999	7.290
2010	714	903	1.432	1.653	1.736	1.673	1.613	1.527	2.351	2.787	2.656	2.345	3.049	21.390
2011	2.458	2.610	3.105	3.403	3.847	3.599	2.952	1.559	2.957	2.823	2.603	2.807	8.173	34.723
2012	2.216	2.632	3.223	3.259	3.067	2.821	2.037	1.262	1.648	1.858	1.921	1.579	8.071	27.523
2013	1.633	1.817	2.196	2.070	2.455	2.370	1.955	1.969	2.396	2.510	2.343	2.080	5.646	25.794
2014	1.941	2.256	2.915	2.837	2.723	2.534	2.171	2.265	3.039	2.755	2.964	2.573	7.112	30.973
2015	2.187	2.767	3.297	3.235	3.039	3.366	3.730	2.883	2.927	3.122	3.152	1.861	8.251	35.566
2016	3.093	2.787	3.918										9.798	9.798

Kamyon Pazarının Analizi (x1000) AYA > 5 Ton Truck Market Analysis (x1000) GVW > 5 Ton



Kamyon Pazarı (x1000) AYA > 5 Ton Truck Market (x1000) GVW > 5 Ton

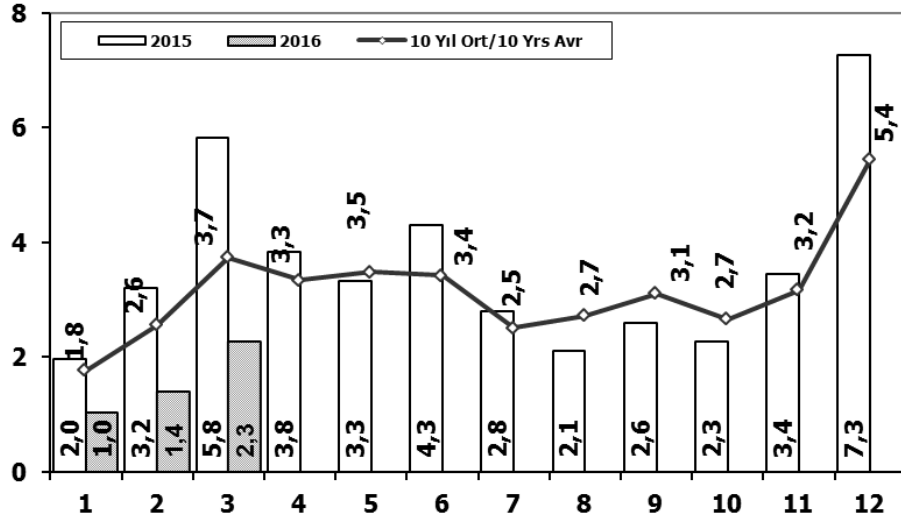


Aylar / Months	10 Yil Ort. 10 Yrs Avr. (x1000)	2016 (x100)	%
1	1,4	0,7	-50,5
2	2,2	1,2	-46,5
3	3,2	2,0	-38,4
Total	6,8	3,9	-43,5

	1	2	3	4	5	6	7	8	9	10	11	12	3 Ay/Mo	Total
2006	1.767	3.310	4.467	4.180	4.449	3.398	2.472	3.142	3.052	2.926	3.550	5.358	9.544	42.071
2007	1.554	2.055	3.065	2.940	2.865	2.613	2.372	3.145	2.988	2.886	3.258	4.444	6.674	34.185
2008	1.797	2.309	2.621	2.578	2.459	2.526	2.067	2.377	2.390	1.790	1.512	1.834	6.727	26.260
2009	771	759	1.034	1.342	1.355	1.651	1.156	1.205	1.780	866	981	2.015	2.564	14.915
2010	777	968	1.772	1.807	1.966	2.205	2.093	2.446	2.444	3.071	3.136	5.677	3.517	28.362
2011	2.552	3.292	4.418	3.754	3.803	3.749	1.996	2.478	3.081	2.774	3.108	5.787	10.262	40.792
2012	1.375	2.159	3.595	2.697	3.321	3.250	2.450	2.277	2.991	2.244	3.006	5.000	7.129	34.365
2013	1.077	1.931	3.127	2.720	3.145	2.951	2.411	1.845	2.554	1.801	3.173	5.025	6.135	31.760
2014	1.117	1.949	2.818	3.092	3.405	3.438	2.083	2.390	3.281	2.494	3.028	6.313	5.884	35.408
2015	1.705	2.841	5.270	3.208	2.920	3.824	2.463	1.798	2.244	1.848	2.902	6.540	9.816	37.563
2016	718	1.154	1.983										3.855	3.855

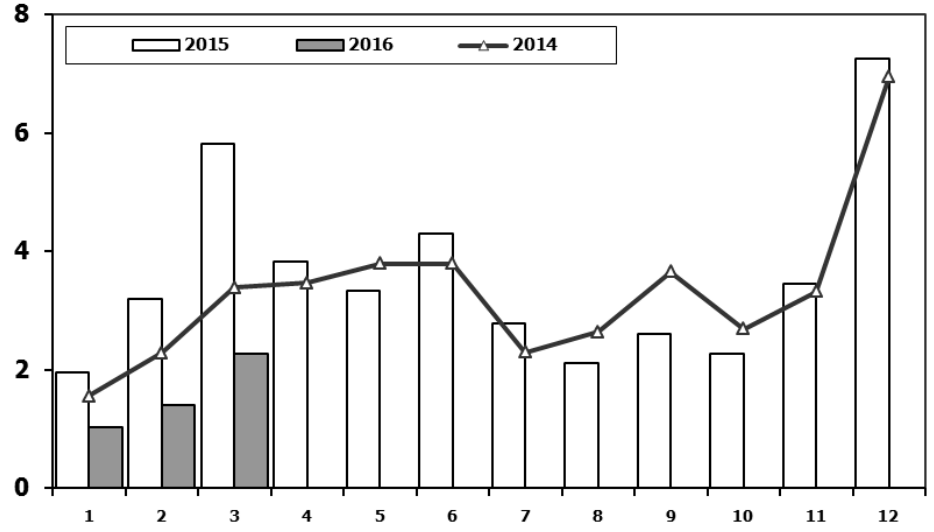
Ağır Ticari Araç Pazarının Analizi (x1000)

HCV Market Analysis (x1000)



Ağır Ticari Araç Pazarı (x1000)

HCV Market (x1000)

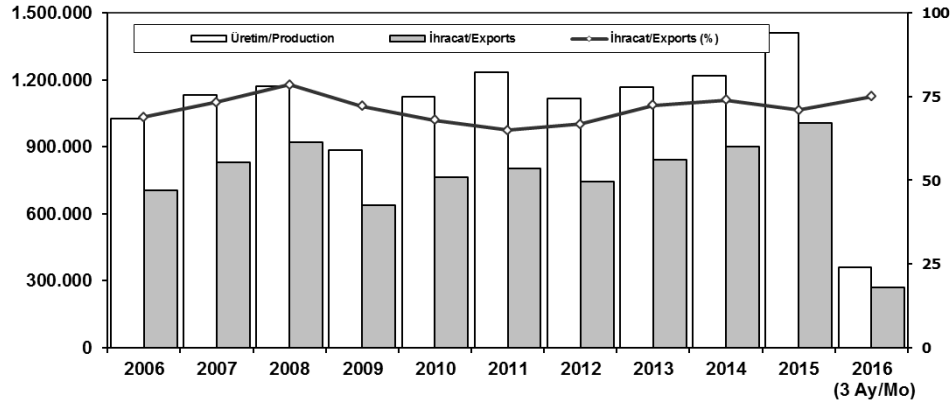


Aylar / Months	10 Yıl Ort. 10 Yrs Avr. (x1000)	2016 (x1000)	%
1	1,8	1,0	-42,0
2	2,6	1,4	-45,5
3	3,7	2,3	-39,4
Total	8,1	4,7	-41,9

	1	2	3	4	5	6	7	8	9	10	11	12	3 Ay/Mo	Total
2006	2.052	3.708	5.038	4.815	5.060	3.848	2.786	3.607	3.520	3.263	4.031	5.935	10.798	47.663
2007	1.833	2.518	3.598	3.267	3.317	2.987	2.627	3.613	3.497	3.333	3.704	5.150	7.949	39.444
2008	2.265	2.870	3.165	3.266	3.029	3.069	2.536	2.922	2.897	2.263	1.899	2.340	8.300	32.521
2009	1.025	1.104	1.420	1.786	1.696	2.035	1.401	1.483	2.006	1.084	1.240	2.463	3.549	18.743
2010	955	1.141	2.059	2.133	2.251	2.494	2.373	2.881	2.787	3.376	3.444	6.365	4.155	32.259
2011	2.766	3.685	4.930	4.376	4.447	4.290	2.320	2.972	3.514	3.219	3.538	6.371	11.381	46.428
2012	1.674	2.503	4.073	3.065	3.957	3.714	2.818	2.700	3.568	2.739	3.335	5.713	8.250	39.859
2013	1.617	2.624	3.914	3.440	3.953	3.675	3.130	2.340	3.074	2.385	3.716	5.878	8.155	39.746
2014	1.555	2.287	3.383	3.461	3.788	3.789	2.299	2.640	3.649	2.686	3.316	6.952	7.225	39.805
2015	1.961	3.202	5.819	3.829	3.333	4.305	2.789	2.106	2.597	2.265	3.442	7.259	10.982	42.907
2016	1.027	1.398	2.265	0	0	0	0	0	0	0	0	0	4.690	4.690

İhracat/Üretim (2006-2016) (Traktör dahil)

Exports/Production (2006-2016) (Including F.Tractor)



	2006	2007	2008	2009	2010	2011	2012	2013	2014	2015	2016 (3 Ay/Mo)
Üretim/Production	1.026.427	1.132.951	1.171.917	884.466	1.124.982	1.234.637	1.115.233	1.166.043	1.218.848	1.410.034	360.097
İhracat/Exports	706.402	829.879	920.763	637.855	763.670	801.112	745.354	843.467	902.194	1.007.267	270.119
İhracat/Exports (%)	69	73	79	72	68	65	67	72	74	71	75

Taşıt Araçları İhracatı (2014-2016)

Motor Vehicle Exports (2014-2016)

SEKTÖR/SECTOR	2014	2015	2015	2016	2016/2015 (%)
			3 Ay-3 Mo		
OTOMOBİL / P.Cars	581.993	604.683	158.642	159.401	0
TİCARİ ARAÇLAR / CV	303.187	387.652	91.196	106.916	17
* Kamyonet/Pick-Up	269.995	341.834	78.584	102.132	30
* Minibüs/Minibus	26.458	38.255	11.128	2.132	-81
* Kamyon/Truck	1.281	1.408	159	818	414
* Midibüs/Midibus	824	447	90	144	60
* Otobüs/Bus	4.629	5.708	1.235	1.690	37
TAŞIT ARAÇLARI /MV TOTAL	885.180	992.335	249.838	266.317	7
TRAKTÖR/F.TRACTOR	17.014	14.932	3.841	3.802	-1
TOTAL	902.194	1.007.267	253.679	270.119	6

Otomotiv Ana ve Yan Sanayii İhracatı (ABD \$)

CBU and CKD Exports - \$

Sektör / Sector	2012	2013	2014	2015	2015	2016	2016/2015 (%)
					Ocak-Mart / January-March		
Toplam Yan Sanayi/Total Component Industry	8.215.636.677	9.065.017.539	9.504.013.791	8.643.538.318	2.110.791.247	2.231.310.528	6%
İç ve Dış Lastik / Tyres	1.199.566.307,01	1.130.005.891,78	1.126.709.610,14	961.494.045	246.018.457	239.862.905	-3%
Emniyet Camı / Safety Glasses	120.615.917,59	135.230.309,67	143.208.298,99	124.569.031	32.787.936	32.878.779	0%
Motor (Engine)	272.085.582,31	319.294.885,46	171.893.752,32	221.897.271	34.644.108	78.415.297	126%
Akümülatör / Batteries	249.831.846,25	306.451.449,47	289.101.198,21	220.618.374	53.862.490	49.613.869	-8%
Diğer Aksam ve Parça / Spare Parts&Components	6.373.537.023,45	7.174.035.002,35	7.773.100.931,83	7.114.959.599	1.743.478.256	1.830.539.679	5%
Toplam Ana Sanayi/Total Vehicle Industry	11.100.115.134	12.491.591.365	13.259.499.977	12.975.346.180	3.204.698.032	3.426.475.261	7%
Otobüs / Bus	855.424.303,62	937.790.962,87	985.983.007,01	1.024.134.143	227.710.675	298.543.699	31%
Midibüs-Minibüs / Minibus- Minibus	161.806.275,12	147.769.644,17	97.685.509,12	130.195.838	39.016.912	38.458.229	-1%
Otomobil (P. Cars)	6.068.045.119,19	6.855.475.589,83	7.258.361.005,24	6.881.972.133	1.759.031.380	1.591.090.753	-10%
Kamyon-Kamyonet/HCV-LCV	3.433.310.998,81	3.918.798.755,31	4.201.760.813,55	4.263.767.944	1.028.117.347	1.267.976.443	23%
Römork ve Yan Römork/Trailer-Semi Trailer	195.093.508,21	218.385.731,69	252.354.014,20	252.432.565	65.780.012	95.417.673	45%
Çekici/Truck-Tractor	71.336.634,88	77.907.406,95	38.396.524,81	48.108.959	5.337.038	47.568.112	791%
Tarım Traktörü/Farm Tractor	315.098.293,75	335.463.274,61	424.959.103,39	374.734.597	79.704.668	87.420.351	10%
Toplam/Total	19.315.751.810	21.556.608.904	22.763.513.769	21.618.884.498	5.315.489.279	5.657.785.789	6%

Kaynak: Otomotiv Endüstrisi İhracatçıları Birliği

Firma Bazında İhracat (Adet)
Export Of member Companies (Unit)

FİRMALAR Companies	2014	2015	Ocak-Mart 3 Months	
			2015	2016
FORD OTOSAN	187.921	252.571	59.077	71.373
OYAK RENAULT	257.992	270.299	74.758	60.118
TOFAŞ	142.234	173.743	43.344	58.307
HYUNDAI ASSAN	179.793	201.276	47.570	56.450
TOYOTA	109.517	81.962	23.149	16.365
TÜRK TRAKTÖR	15.866	14.122	3.681	3.580
M. BENZ TÜRK	3.438	4.252	849	1.763
HONDA TÜRKİYE	1.560	2.220	441	675
MAN TÜRKİYE	937	1.493	448	532
KARSAN	37	3.067	19	443
HATTAT TARIM	1.148	810	160	222
OTOKAR	580	720	91	136
TEMSA GLOBAL	423	441	43	90
A.I.O.S.	748	291	49	65
GENEL TOPLAM	902.194	1.007.267	253.679	270.119

Kaynak: OSD

Sektör Bazında İhracat (\$)
Exports on Sectorial Basis

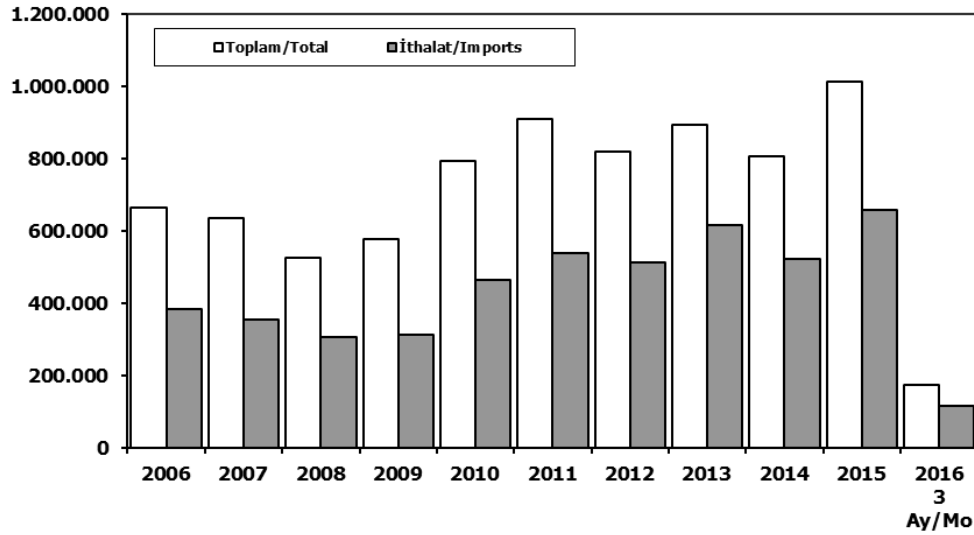
SEKTÖRLER	1 - 31 MART				1 - 29 ŞUBAT		1 OCAK - 31 MART			
	2015	2016	Değişim ('16/'15)	Pay(16)	2016	Değişim (Mar/Şub)	2015	2016	Değişim ('16/'15)	Pay(16)
Otomotiv Endüstrisi	1.770.418	2.047.333	15,6%	17,9%	1.983.565	3,2%	5.201.904	5.543.688	6,6%	17,7%
Hazırgiyim ve Konfeksiyon	1.324.719	1.513.821	14,3%	13,2%	1.422.112	6,4%	3.972.327	4.255.524	7,1%	13,6%
Kimyevi Maddeler ve Mamulleri	1.342.866	1.185.142	-11,7%	10,3%	1.138.037	4,1%	3.716.933	3.322.810	-10,6%	10,6%
Elektrik Elektronik ve Hizmet	838.376	900.226	7,4%	7,9%	805.569	11,8%	2.401.292	2.334.736	-2,8%	7,4%
Çelik	954.846	738.807	-22,6%	6,4%	745.661	-0,9%	2.744.777	2.111.612	-23,1%	6,7%
Tekstil ve Hammaddeleri	677.212	704.287	4,0%	6,1%	634.024	11,1%	1.934.543	1.935.102	0,0%	6,2%
Hububat, Bakliyat, Yağlı Tohumlar ve Mamulleri	554.741	570.624	2,9%	5,0%	562.888	1,4%	1.612.642	1.594.348	-1,1%	5,1%
Demir ve Demir Dışı Metaller	531.386	537.533	1,2%	4,7%	502.839	6,9%	1.491.755	1.464.451	-1,8%	4,7%
Makine ve Aksamları	450.343	470.638	4,5%	4,1%	439.562	7,1%	1.348.443	1.286.501	-4,6%	4,1%
Mobilya, Kağıt ve Orman Ürünleri	347.127	370.037	6,6%	3,2%	345.879	7,0%	965.810	988.133	2,3%	3,1%
TOPLAM (TİM+TÜİK*)	11.172.482	11.466.493	2,6%	100,0%	10.762.363	6,5%	32.390.458	31.396.291	-3,1%	100,0%

Kaynak: TİM

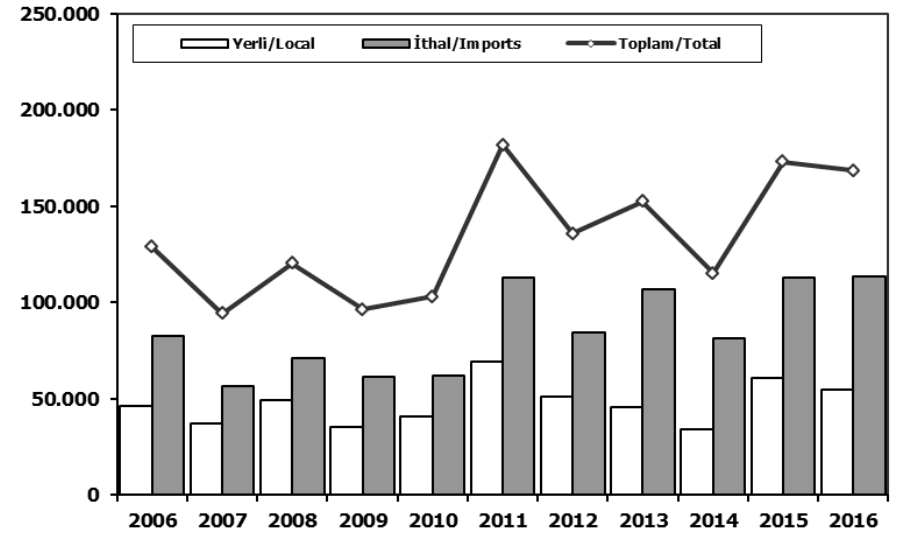
First 3 Sectors:

- 1- Automotive Industry
- 2- Ready Wear and Confection
- 3-Chemical Articles and Products

Toplam Pazar (Otomobil+T.Araç) Total Market (P.Cars+C.V)



Hafif Araçlar Pazarı (2006-2016 Ocak-Mart) LV Market (2006-2016 January-March)

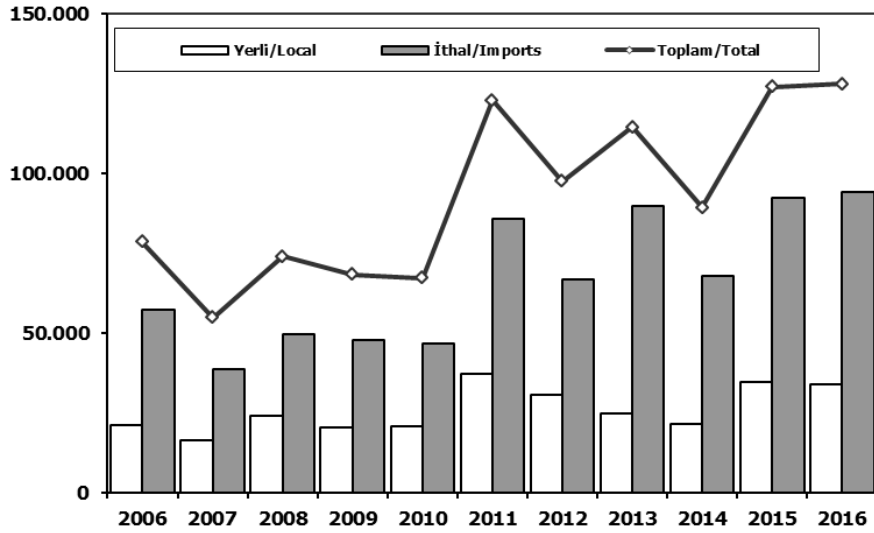


	2006	2007	2008	2009	2010	2011	2012	2013	2014	2015	2015 3 Ay/Mo	2016 3 Ay/Mo
Toplam/Total	665.515	634.206	526.544	575.869	793.172	910.867	817.620	893.124	807.486	1.011.194	184.230	173.176
İthalat/Imports	382.460	355.752	306.087	313.921	465.408	538.532	511.694	615.609	522.842	658.690	115.540	115.751
İthalat/Imports (%)	57	56	58	55	59	59	63	69	65	65	63	67

	2006	2007	2008	2009	2010	2011	2012	2013	2014	2015	2016
Yerli/Local	46.212	37.454	49.297	35.241	41.107	69.196	51.098	45.477	34.026	60.533	55.021
İthal/Imports	82.695	56.737	71.130	61.218	61.929	112.762	84.655	107.127	81.246	112.715	113.465
Toplam/Total	128.907	94.191	120.427	96.459	103.036	181.958	135.753	152.604	115.272	173.248	168.486
İthalat/Imports (%)	64	60	59	63	60	62	62	70	70	65	67

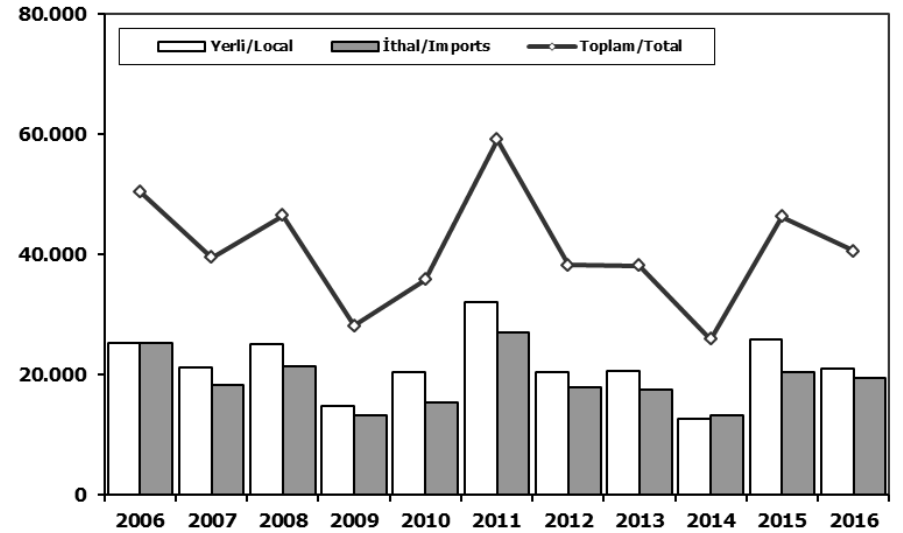
Otomobil Pazarı (2006-2016 Ocak-Mart)

P.Cars Market (2006-2016 January-March)



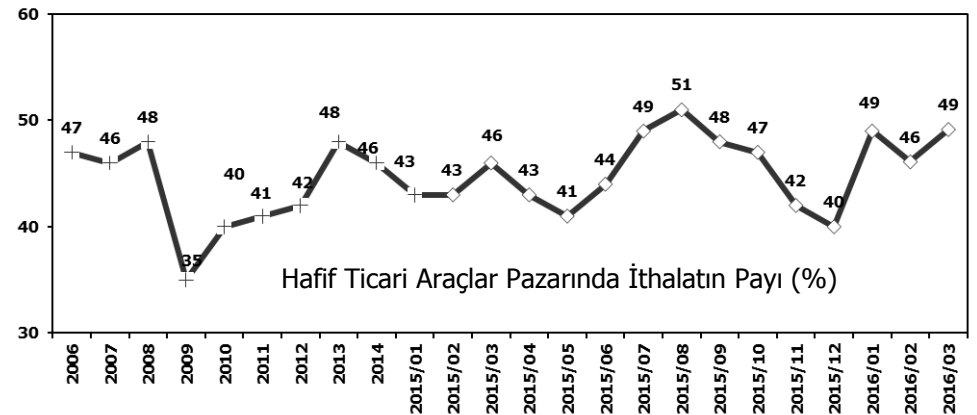
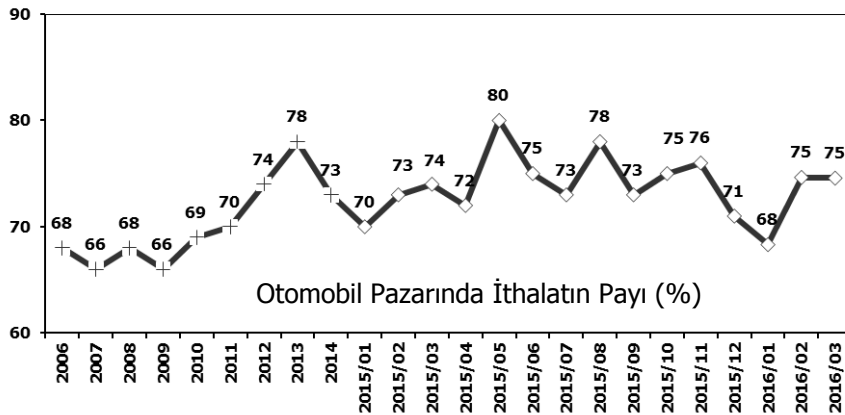
Hafif Ticari Araçlar Pazarı (2006-2016 Ocak-Mart)

Light Commercial Vehicle Market (2006-2016 January-March)



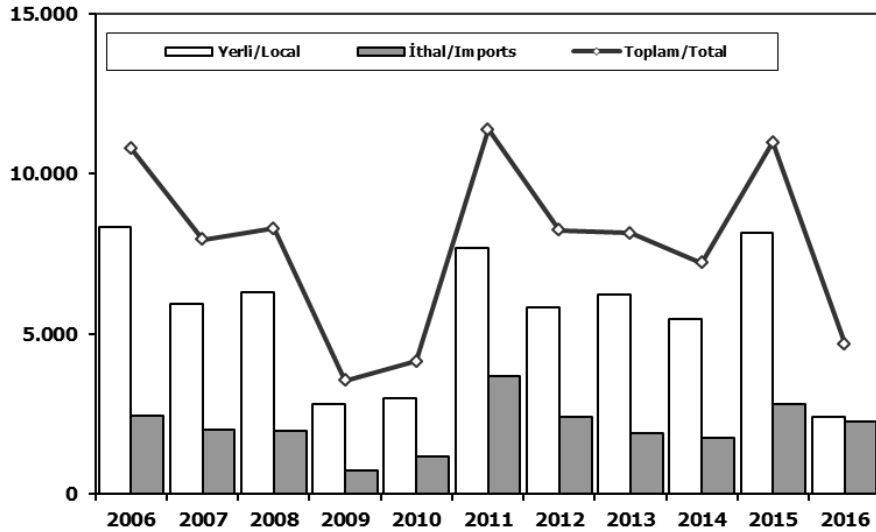
	2006	2007	2008	2009	2010	2011	2012	2013	2014	2015	2016
Yerli/Local	21.020	16.278	24.175	20.361	20.614	37.090	30.704	24.846	21.342	34.745	33.963
İthal/Imports	57.411	38.456	49.756	47.926	46.589	85.805	66.832	89.588	68.005	92.246	93.958
Toplam/Total	78.431	54.734	73.931	68.287	67.203	122.895	97.536	114.434	89.347	126.991	127.921
İthalat/Imports (%)	73	70	67	70	69	70	69	78	76	73	73

	2006	2007	2008	2009	2010	2011	2012	2013	2014	2015	2016
Yerli/Local	25.192	21.176	25.122	14.880	20.493	32.106	20.394	20.631	12.684	25.788	21.058
İthal/Imports	25.284	18.281	21.374	13.292	15.340	26.957	17.823	17.539	13.241	20.469	19.507
Toplam/Total	50.476	39.457	46.496	28.172	35.833	59.063	38.217	38.170	25.925	46.257	40.565
İthalat/Imports (%)	50	46	46	47	43	46	47	46	51	44	48



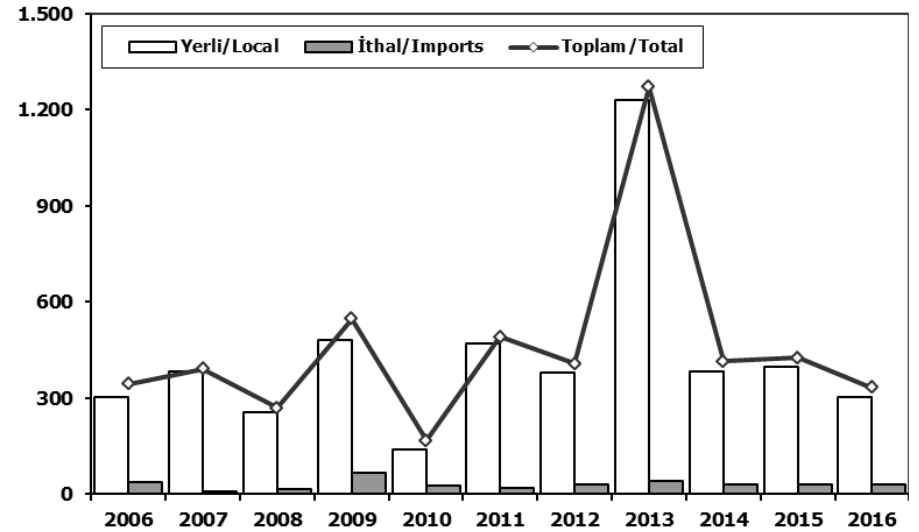
Ağır Ticari Araçlar Pazarı (2006-2016 Ocak-Mart)

HCV Market (2006-2016 January-March)



Otobüs Pazarı (2006-2016 Ocak-Mart)

Bus Market (2006-2016 January-March)

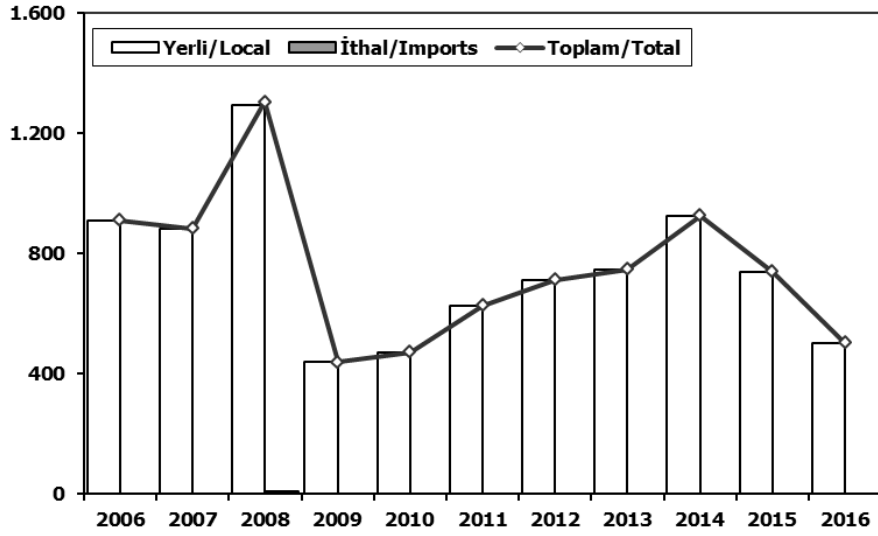


	2006	2007	2008	2009	2010	2011	2012	2013	2014	2015	2016
Yerli/Local	8.357	5.943	6.309	2.798	2.987	7.693	5.831	6.239	5.466	8.157	2.404
İthal/Imports	2.441	2.006	1.991	751	1.168	3.688	2.419	1.916	1.759	2.825	2.286
Toplam/Total	10.798	7.949	8.300	3.549	4.155	11.381	8.250	8.155	7.225	10.982	4.690
İthalat/Imports (%)	23	25	24	21	28	32	29	23	24	26	49

	2006	2007	2008	2009	2010	2011	2012	2013	2014	2015	2016
Yerli/Local	305	383	255	480	140	471	379	1.232	385	396	303
İthal/Imports	39	9	15	67	27	21	29	40	30	30	30
Toplam/Total	344	392	270	547	167	492	408	1.272	415	426	333
İthalat/Imports (%)	11	2	6	12	16	4	7	3	7	7	9

Midibüs Pazarı (2006-2016 Ocak-Mart) (7-9 mt / 25-35 Kişilik)

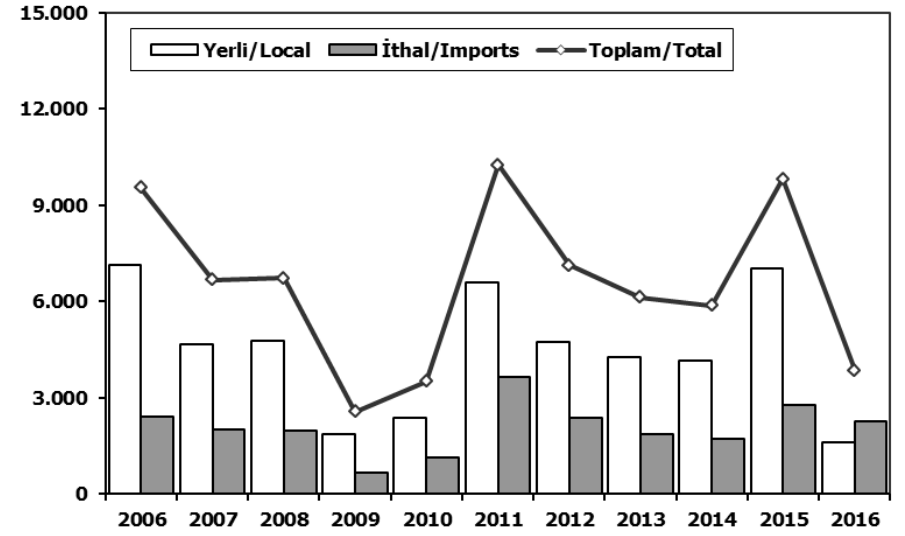
Midibus Market (2006-2016 January-March) (7-9 mt / 25-35 Passengers)



	2006	2007	2008	2009	2010	2011	2012	2013	2014	2015	2016
Yerli/Local	910	883	1.294	438	471	627	713	748	926	740	502
İthal/Imports	0	0	9	0	0	0	0	0	0	0	0
Toplam/Total	910	883	1.303	438	471	627	713	748	926	740	502
İthalat/Imports (%)	0	0	1	0	0	0	0	0	0	0	0

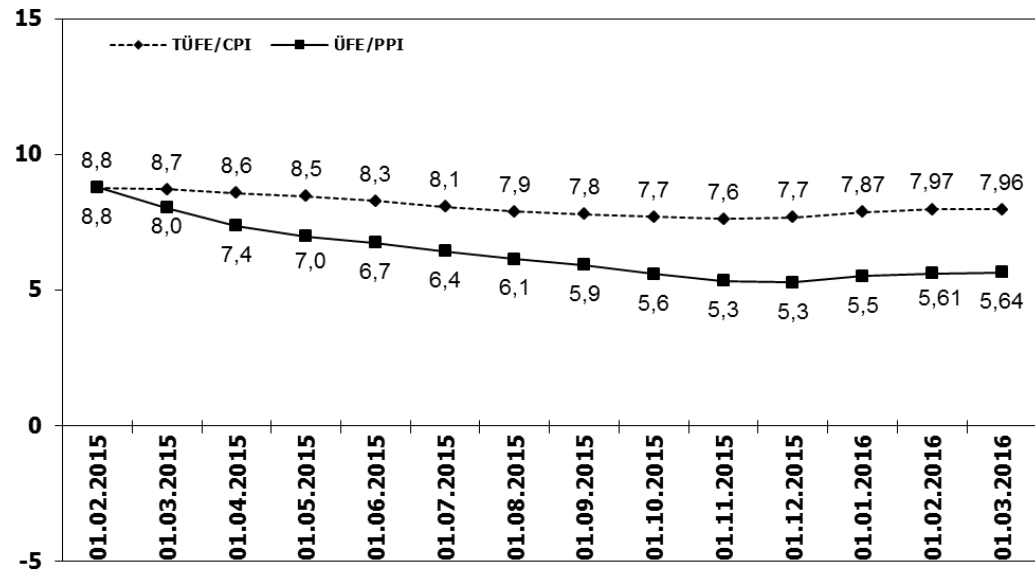
Kamyon Pazarı (2006-2016 Ocak-Mart)

Truck Market (2006-2016 January-March)

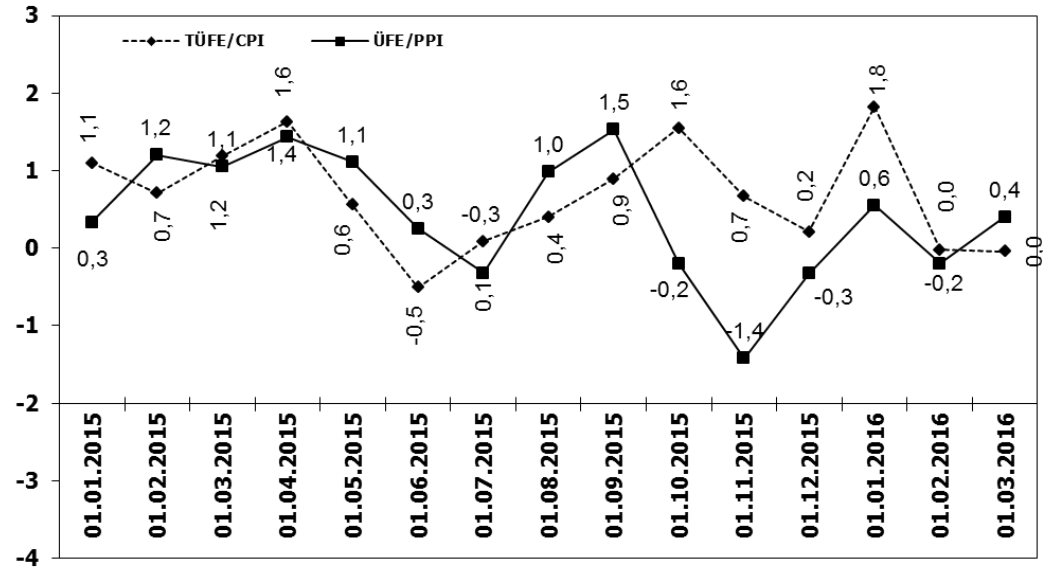


	2006	2007	2008	2009	2010	2011	2012	2013	2014	2015	2016
Yerli/Local	7.142	4.677	4.760	1.880	2.376	6.595	4.739	4.259	4.155	7.021	1.599
İthal/Imports	2.402	1.997	1.967	684	1.141	3.667	2.390	1.876	1.729	2.795	2.256
Toplam/Total	9.544	6.674	6.727	2.564	3.517	10.262	7.129	6.135	5.884	9.816	3.855
İthalat/Imports (%)	25	30	29	27	32	36	34	31	29	28	59

TÜFE ve ÜFE'nin Yıllık Değişimi (%) CPI and PPI Yearly Changes (%)



TÜFE ve ÜFE'nin Aylık Değişimi (%) CPI and PPI Monthly Changes (%)



2016 Yılı İthal Hafif Araç Satışları 2016 Light Vehicles Import Sales

	2015 TOPLAMI 2015 Total	1	2	3	4	5	6	7	8	9	10	11	12	2016 TOPLAMI 2016 Total
VOLKSWAGEN	107.401	2.792	5.763	8.197										16.752
OPEL	47.000	1.263	2.521	3.936										7.720
FORD	43.341	972	2.733	3.347										7.052
DACIA	37.257	1.235	1.963	3.402										6.600
RENAULT	32.683	1.258	2.007	4.030										7.295
B.M.W	31.221	496	2.042	2.080										4.618
MERCEDES BENZ	30.333	1.091	1.701	2.480										5.272
NISSAN	26.421	971	1.534	2.989										5.494
HYUNDAI	25.164	1.148	1.499	2.651										5.298
PEUGEOT	22.808	540	1.730	2.526										4.796
SKODA	22.107	715	1.435	2.640										4.790
AUDI	20.279	911	1.200	1.455										3.566
SEAT	16.911	502	853	1.443										2.798
CITROEN	16.520	394	366	1.562										2.322
KIA	13.873	263	574	1.080										1.917
TOYOTA	10.949	123	411	631										1.165
VOLVO	6.939	187	194	311										692
HONDA	5.413	366	669	1.077										2.112
FIAT	5.241	162	247	336										745
JEEP	3.507	92	161	204										457
MAZDA	1.761	50	67	114										231
MINI (İngiliz)	1.739	101	74	134										309
SUBARU	1.737	73	112	152										337
LAND ROVER	1.577	46	131	318										495
MITSUBISHI	1.366	39	71	53										163
PORSCHE	861	55	40	55										150
ALFA ROMEO	847	12	75	149										236
SSANGYONG	605	19	23	37										79
PROTON	500	10	7	10										27
CHERY	394	30	23	12										65
JAGUAR	336	20	25	34										79
SUZUKI	177	7	0	194										201
TATA	168	0	0	0										0
SMART	88	0	0	16										16
MASERATI	73	1	6	1										8
INFINITI	43	0	0	0										0
GEEELY	25	0	0	0										0
BENTLEY	19	0	1	0										1
LEXUS	13	0	0	6										6
FERRARI	10	3	1	0										4
LAMBORGHINI	6	0	1	0										1
LANCIA	2	0	0	0										0
ASTON MARTIN	0	2	1	2										5
DS	0	8	34	42										84
TOPLAM	537.719	15.957	30.295	47.706	0	0	0	0	0	0	0	0	0	93.958

2016 YILI İTHAL HAFIF TİCARİ ARAÇ SATIŞLARI / Light Commercial Vehicles Import 2016

	2015 TOPLAMI 2015 Total	1	2	3	4	5	6	7	8	9	10	11	12	2016 TOPLAMI 2016 Total
VOLKSWAGEN	31.642	1.736	2.391	3.096										7.223
RENAULT	15.617	451	602	983										2.036
FIAT	9.072	272	374	615										1.261
MERCEDES BENZ	8.457	360	549	925										1.834
PEUGEOT	8.212	467	284	471										1.222
DACIA	7.555	221	228	380										829
CITROEN	6.511	207	213	752										1.172
KIA	4.110	155	196	387										738
FORD	4.028	85	189	298										572
MITSUBISHI	3.897	324	151	312										787
TOYOTA	2.928	34	178	514										726
IVECO	2.710	88	131	173										392
HYUNDAI	1.612	71	117	138										326
ISUZU	333	57	34	90										181
SSANGYONG	303	3	5	16										24
TATA	228	9	0	0										9
NISSAN	7	0	0	175										175
MAZDA	0	0	0	0										0
TOPLAM	107.222	4.540	5.642	9.325	0	0	0	0	0	0	0	0	0	19.507