



OTOMOTİV SANAYİİ DERNEĞİ
AUTOMOTIVE MANUFACTURERS ASSOCIATION

AYLIK RAPOR

Automotive Industry Monthly Report

Şubat / February 2014

- **Üretim**/Production
- **Satış**/Sales
- **İthalat**/Imports
- **İhracat**/Exports

OSD "OICA" Üyesidir



OSD is a Member of "OICA"

2014 Şubat Ayı Özeti / 2014 February Summary

KONULAR/ MATTERS		ŞUBAT / FEBRUARY			2 AY/ 2 MONTHS			SON 12 AYLIK / YoY		
		2013	2014	2014/2013 (%)	2013	2014	2014/2013 (%)	2013	2014	2014/2013 (%)
Üretim/ Production	Toplam/ Total	93.519	83.140	-11	177.327	158.182	-11	1.071.389	1.106.389	3
	Otomobil/ P.Cars	48.821	53.250	9	88.892	105.256	18	566.970	649.968	15
Pazar/ Market	Toplam/ Total	50.931	37.502	-26	88.071	71.790	-18	830.645	876.843	6
	Otomobil/ P.Cars	36.814	27.167	-26	62.649	51.535	-18	568.663	653.541	15
İthalat/ Import	Toplam/ Total	34.277	24.887	-27	57.943	47.764	-18	524.912	605.430	15
	Otomobil/ P.Cars	28.482	20.522	-28	47.991	38.730	-19	424.312	508.266	20
İhracat/ Export	Toplam/ Total	72.826	69.287	-5	130.491	120.711	-7	735.747	818.691	11
	Otomobil/ P.Cars	40.919	46.534	14	68.880	82.459	20	411.265	498.083	21
İhracat / Export (\$)	Toplam/ Total **	1.798.984.930	1.871.116.029	4	3.297.851.104	3.498.547.513	6	19.506.130.804	21.891.542.918	12
	Otomobil/ P.Cars	591.353.430	600.545.945	2	1.014.066.231	1.093.627.307	8	6.044.720.087	6.935.195.432	15

PARAMETRELER / PARAMETERS		ŞUBAT / FEBRUARY			2 AY/ 2 MONTHS			SON 12 AYLIK / YoY		
		2013	2014	2014/2013 (%)	2013	2014	2014/2013 (%)	2013	2014	2014/2013 (%)
ÜFE/ PPI		1,65	1,38	**	-0,31	4,75	**	1,84	12,40	**
TÜFE/ CPI		0,30	0,43	**	1,95	2,41	**	7,03	7,89	**
Sanayi Endeksi/ Industry Index		0,67	1,86	**	0,96	5,21	**	2,13	13,01	**
\$ (*)		1,7988	2,2114	23	1,7811	2,2426	26	1,7941	2,0096	12
EURO (*)		2,3603	3,0456	29	2,3753	3,0619	29	2,3190	2,6803	16
Japon Yeni (*)		1,9550	2,1599	10	1,9466	2,1929	13	2,1890	2,0035	-8

(*) Ortalama Değerler / Average Values

(**) Toplam Sanayi / Total Industry Including Components

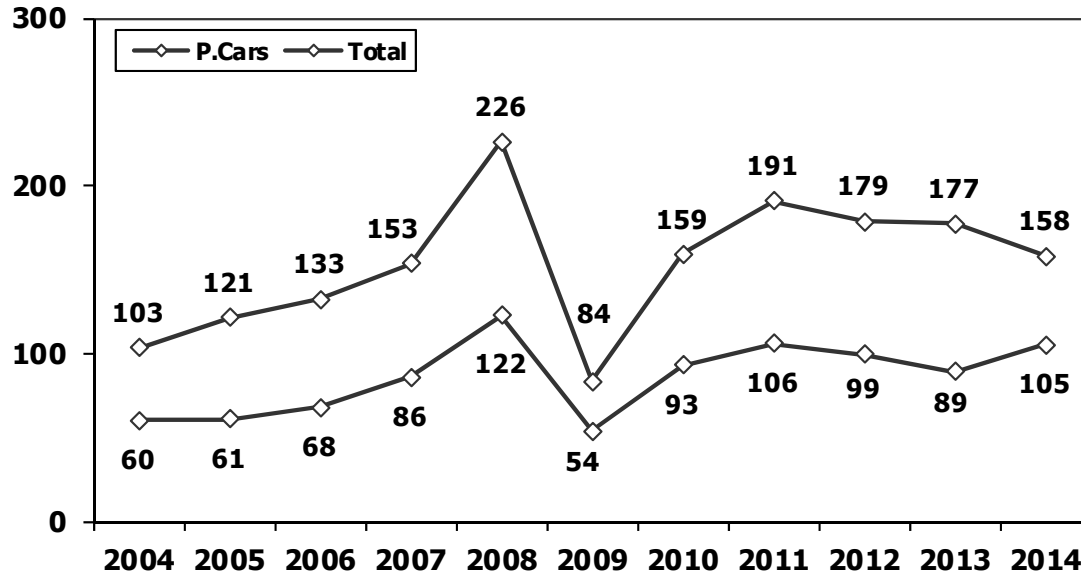
2013/2014 Yılları Üretim 2013/2014 Production

K.KAMYON : AYA 3.5-12 Ton (L.Truck:GVW 3.5-12 Ton)

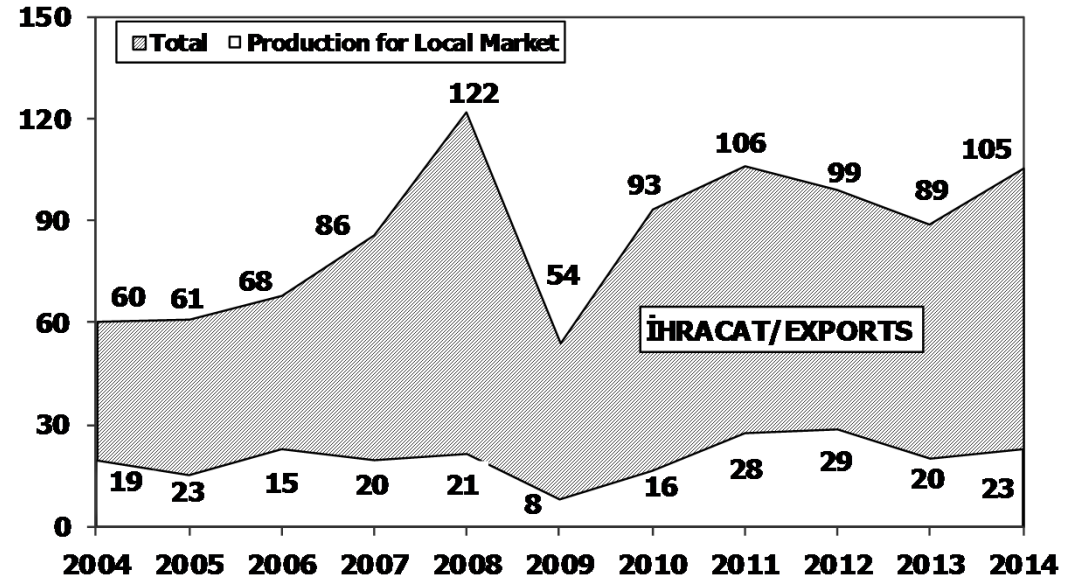
B.KAMYON : AYA 12 Ton'dan Büyük (M.Truck:GVW 12 Ton And Up)

TİPLER	ŞUBAT AYI ÜRETİMİ February Production		2 AYLIK ÜRETİM 2 Months Production		DEĞİŞİM % Percent Change %	
	2013	2014	2013	2014	ŞUBAT February	2 AY 2 Months
OTOMOBİL - Pass.Car	48.821	53.250	88.892	105.256	9	18
TİCARİ ARAÇLAR - Commercial Vehicles	44.698	29.890	88.435	52.926	-33	-40
* B. KAMYON - M. Truck	2.165	1.872	3.766	3.640	-14	-3
* K. KAMYON - L. Truck	285	308	754	567	8	-25
* KAMYONET - Pick Up	38.023	24.832	75.226	43.220	-35	-43
* OTOBÜS - Bus	674	588	1.459	1.073	-13	-26
* MİNİBÜS - Minibus	3.124	1.754	6.402	3.291	-44	-49
* MİDİBÜS - Midibus	427	536	828	1.135	26	37
TAŞIT ARAÇLARI TOPLAM - MV Total	93.519	83.140	177.327	158.182	-11	-11
TRAKTÖR - F.Tractor	3.030	3.694	6.040	7.096	22	17
GENEL TOPLAM - Grand Total	96.549	86.834	183.367	165.278	-10	-10

Toplam Üretim ve Otomobil Üretimi (x1000) (Ocak-Şubat)
Total & P.Cars Production (x1000) (January-February)



Otomobil Üretimi ve İhracat (x1000) (Ocak-Şubat)
P.Cars Production & Exports (x1000) (January-February)





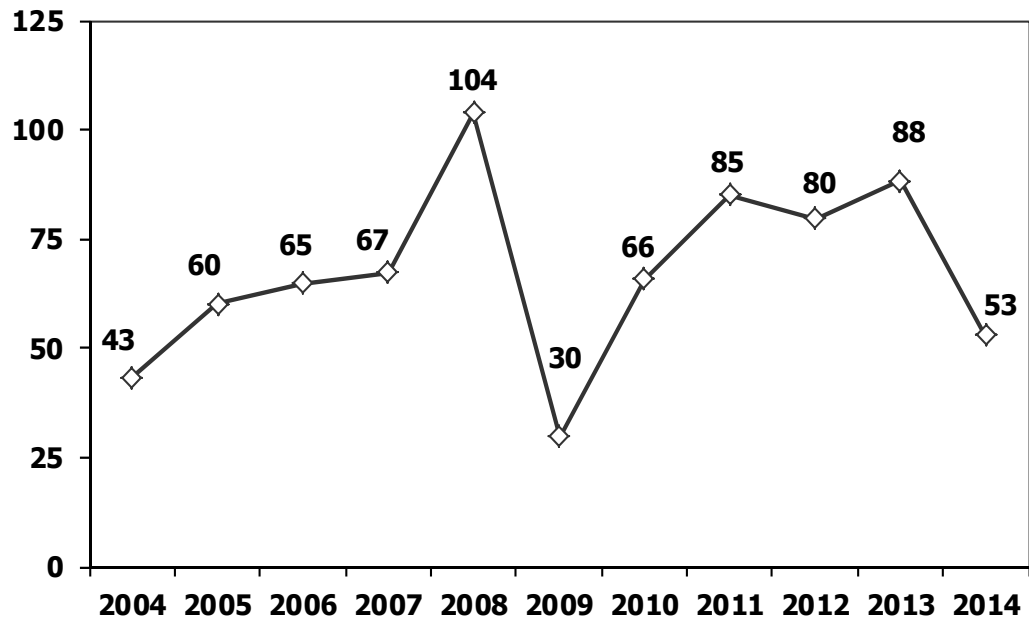
2 Aylık Üretim (2 Months Production)

FİRMALAR Companies	OTOMOBİL Pass.Car	%	K.KAMYON L.Truck	%	B.KAMYON Mid.Truck	%	KAMYONET Pick Up	%	OTOBÜS Bus	%	MİNİBÜS Mini-Bus	%	MİDİBÜS Midi-Bus	%	TRAKTÖR F.Tractor	%	TOPLAM Totals
A.I.O.S.	0	0	510	90	0	0	64	0	10	1	0	0	332	29	0	0	916
FORD OTOSAN	0	0	0	0	836	23	18.956	44	0	0	3.147	96	0	0	0	0	22.939
HATTAT TARIM	0	0	0	0	0	0	0	0	0	0	0	0	0	0	346	5	346
HONDA TÜRKİYE	2.520	2	0	0	0	0	0	0	0	0	0	0	0	0	0	0	2.520
HYUNDAI ASSAN	24.323	23	0	0	0	0	0	0	0	0	0	0	0	0	0	0	24.323
KARSAN	0	0	0	0	0	0	0	0	40	4	144	4	0	0	0	0	184
M. BENZ TÜRK	0	0	0	0	2.804	77	0	0	507	47	0	0	0	0	0	0	3.311
MAN TÜRKİYE	0	0	0	0	0	0	0	0	180	17	0	0	0	0	0	0	180
OTOKAR	0	0	57	10	0	0	45	0	36	3	0	0	463	41	0	0	601
OYAK RENAULT	45.919	44	0	0	0	0	0	0	0	0	0	0	0	0	0	0	45.919
TEMSA GLOBAL	0	0	0	0	0	0	0	0	300	28	0	0	340	30	0	0	640
TOFAŞ	8.388	8	0	0	0	0	24.155	56	0	0	0	0	0	0	0	0	32.543
TOYOTA	24.106	23	0	0	0	0	0	0	0	0	0	0	0	0	0	0	24.106
TÜRK TRAKTÖR	0	0	0	0	0	0	0	0	0	0	0	0	0	0	6.750	95	6.750
TOPLAM	105.256	100	567	100	3.640	100	43.220	100	1.073	100	3.291	100	1.135	100	7.096	100	165.278

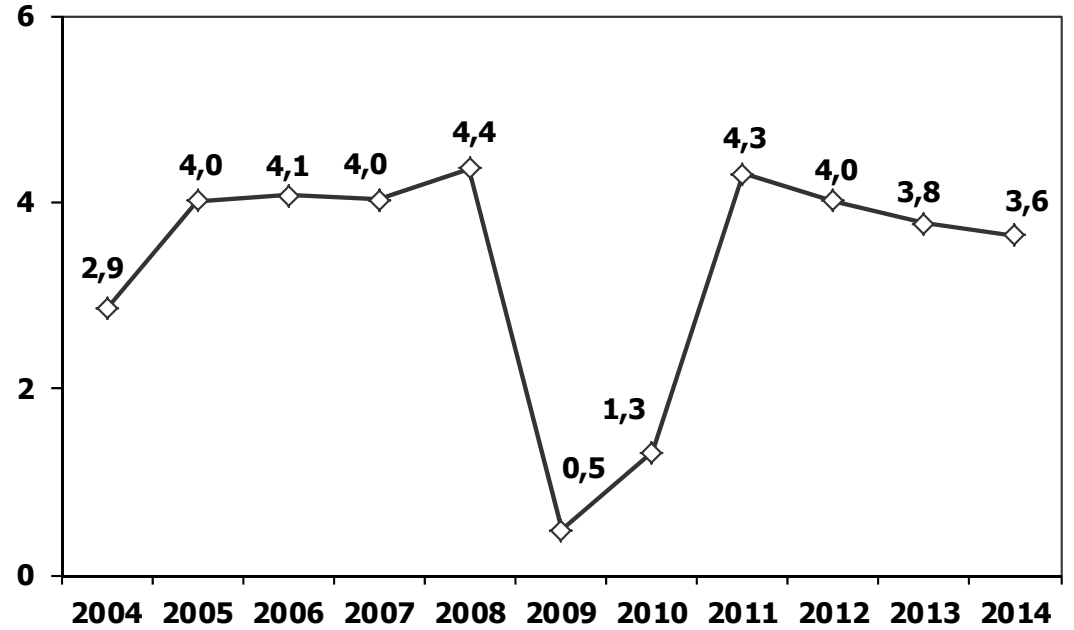
Şubat Ayı Üretimi (February Production)

FİRMALAR Companies	OTOMOBİL Pass.Car	%	K.KAMYON L.Truck	%	B.KAMYON Mid.Truck	%	KAMYONET Pick Up	%	OTOBÜS Bus	%	MİNİBÜS Mini-Bus	%	MİDİBÜS Midi-Bus	%	TRAKTÖR F.Tractor	%	TOPLAM Totals
A.I.O.S.	0	0	278	90	0	0	58	0	10	2	0	0	170	32	0	0	516
FORD OTOSAN	0	0	0	0	536	29	12.105	49	0	0	1.688	96	0	0	0	0	14.329
HATTAT TARIM	0	0	0	0	0	0	0	0	0	0	0	0	0	0	174	5	174
HONDA TÜRKİYE	1.050	2	0	0	0	0	0	0	0	0	0	0	0	0	0	0	1.050
HYUNDAI ASSAN	10.203	19	0	0	0	0	0	0	0	0	0	0	0	0	0	0	10.203
KARSAN	0	0	0	0	0	0	0	0	0	0	66	4	0	0	0	0	66
M. BENZ TÜRK	0	0	0	0	1.336	71	0	0	303	52	0	0	0	0	0	0	1.639
MAN TÜRKİYE	0	0	0	0	0	0	0	0	114	19	0	0	0	0	0	0	114
OTOKAR	0	0	30	10	0	0	25	0	21	4	0	0	236	44	0	0	312
OYAK RENAULT	27.660	52	0	0	0	0	0	0	0	0	0	0	0	0	0	0	27.660
TEMSA GLOBAL	0	0	0	0	0	0	0	0	140	24	0	0	130	24	0	0	270
TOFAŞ	3.559	7	0	0	0	0	12.644	51	0	0	0	0	0	0	0	0	16.203
TOYOTA	10.778	20	0	0	0	0	0	0	0	0	0	0	0	0	0	0	10.778
TÜRK TRAKTÖR	0	0	0	0	0	0	0	0	0	0	0	0	0	0	3.520	95	3.520
TOPLAM	53.250	100	308	100	1.872	100	24.832	100	588	100	1.754	100	536	100	3.694	100	86.834

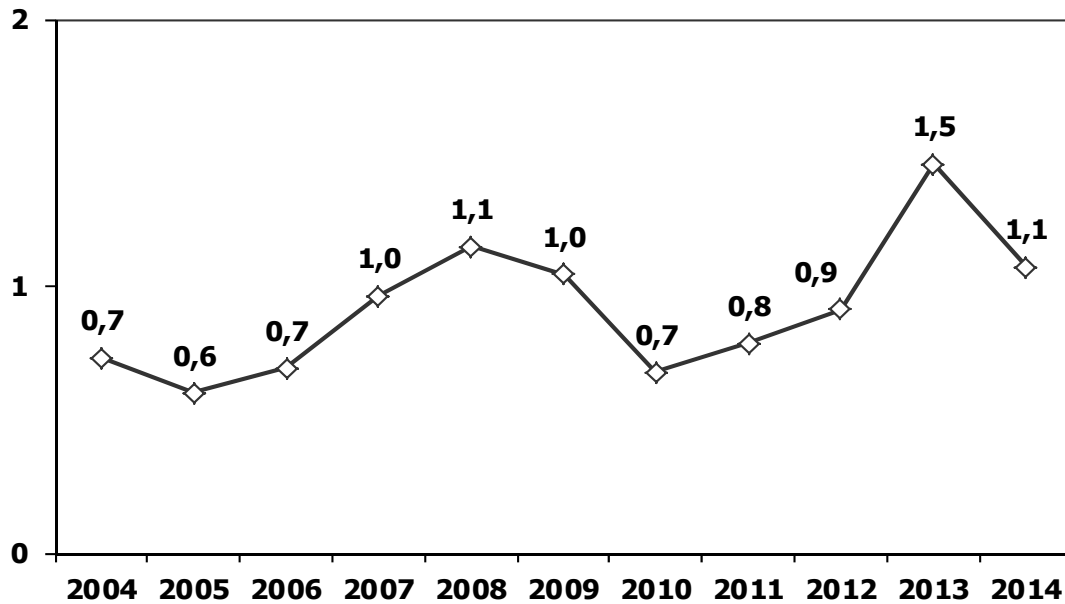
Ticari Araç Üretimi (x1000) (Ocak-Şubat)
Commercial Vehicle Production (x1000) (January- February)



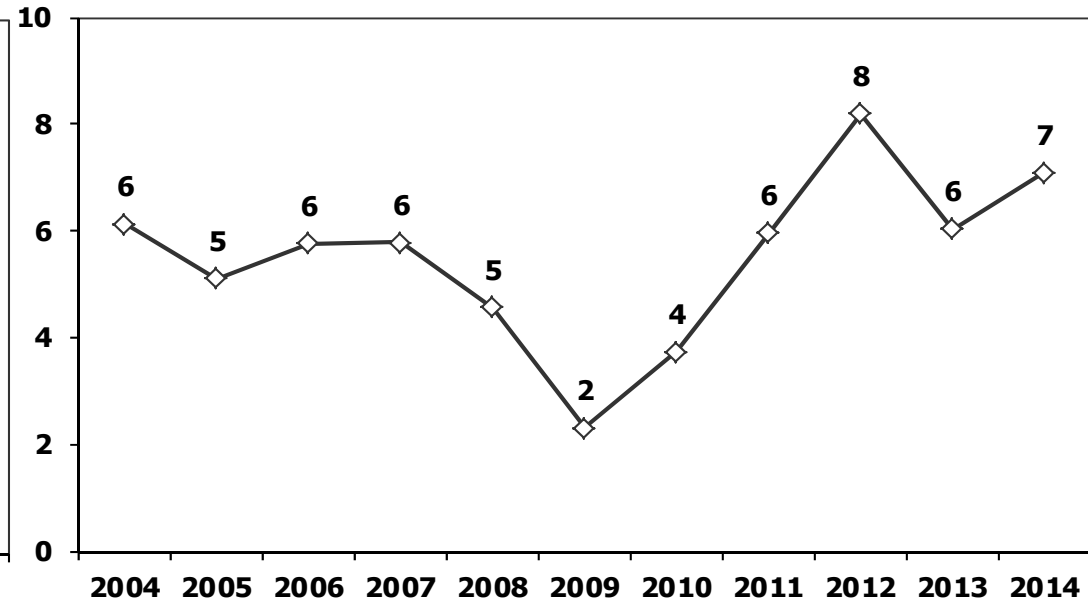
(AYA >12 Ton) **Büyük Kamyon Üretimi** (x1000) (Ocak-Şubat)
(GVW >12 Ton) Heavy Truck Production (x1000) (January- February)



Otobüs Üretimi (x1000) (Ocak-Şubat)
Bus Production (x1000) (January- February)

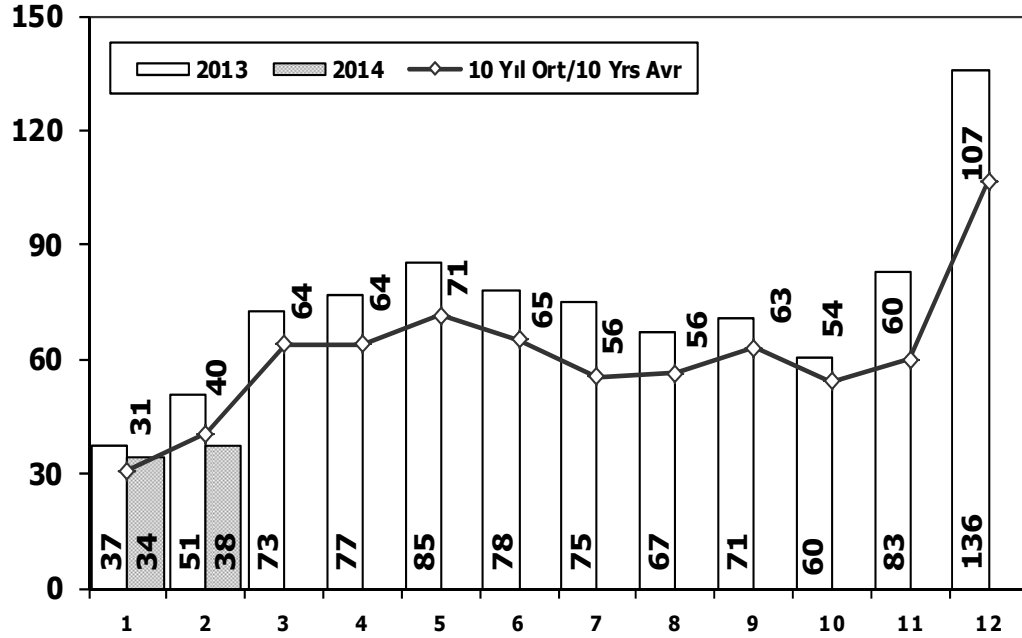


Traktör Üretimi (x1000) (Ocak-Şubat)
F. Tractor Production (x1000) (January- February)



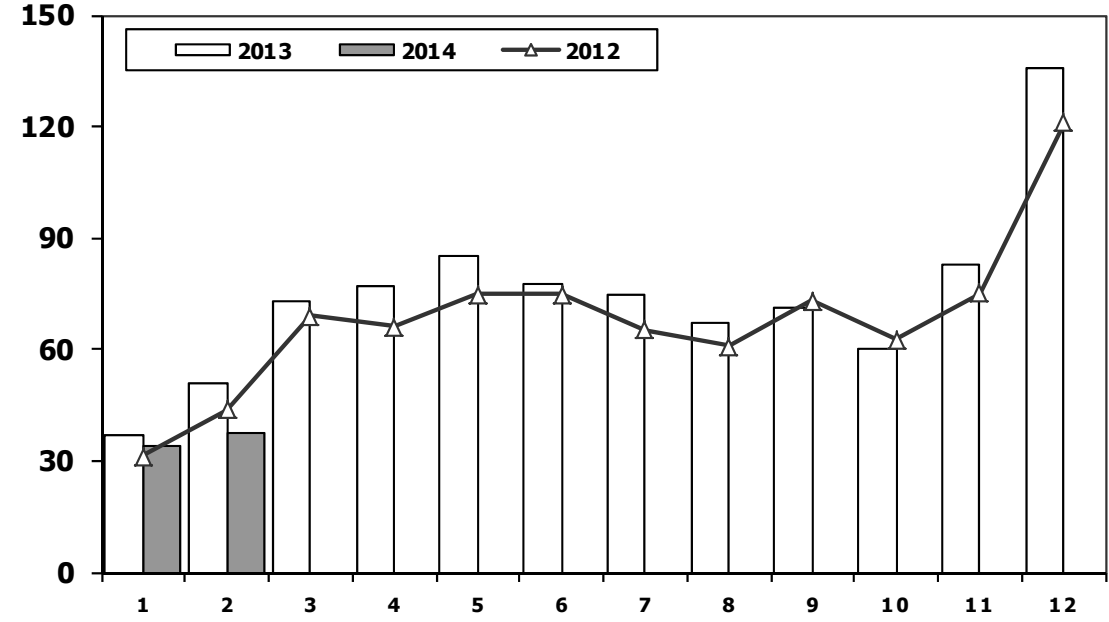
Toplam Pazarın Analizi (x1000)

Total Market Analysis (x1000)



Toplam Pazar (x1000)

Total Market (x1000)

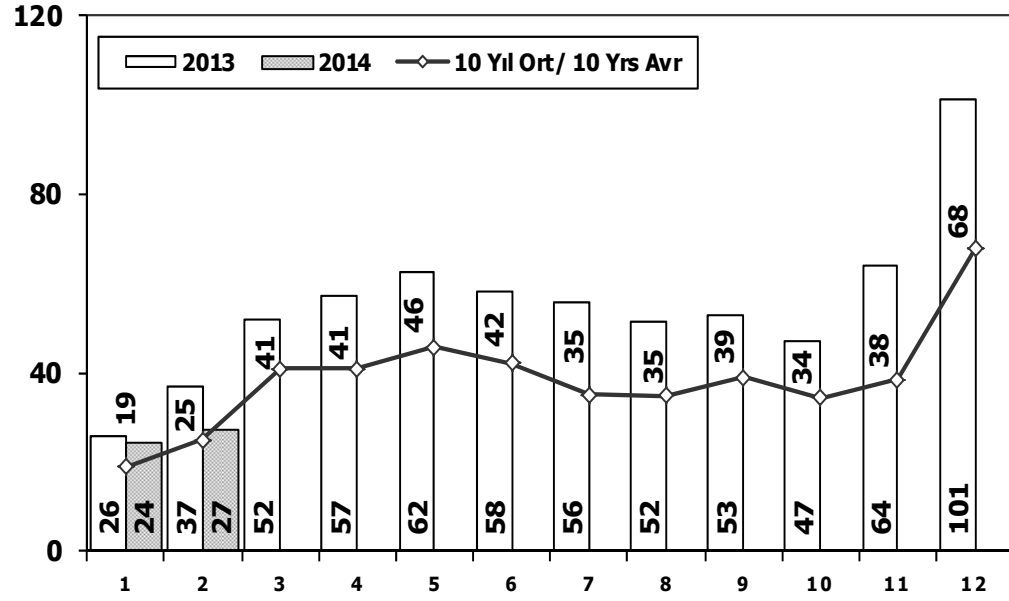


Aylar / Months	10 Yil Ort. 10 Yrs Avr. (x1000)	2014 (x1000)	%
1	30,8	34,3	11,4
2	40,4	37,5	-7,3
Total	71,2	71,8	0,8

	1	2	3	4	5	6	7	8	9	10	11	12	2 Ay/Mo	Total
2004	38.621	39.389	71.723	77.056	84.634	63.228	57.307	56.422	59.429	56.153	52.237	85.070	78.010	741.269
2005	22.687	38.291	64.502	60.873	71.383	64.379	63.847	68.647	66.580	60.791	65.719	110.838	60.978	758.537
2006	29.969	44.646	65.090	68.853	83.289	58.203	40.037	47.374	49.629	39.805	55.898	82.722	74.615	665.515
2007	24.950	31.702	45.488	45.633	51.255	51.661	50.117	54.171	50.078	56.058	67.017	106.076	56.652	634.206
2008	33.792	38.121	56.814	50.967	51.627	49.393	44.692	46.592	46.829	35.147	28.152	44.418	71.913	526.544
2009	20.631	22.846	56.531	54.426	64.887	63.102	30.246	37.092	83.403	22.117	29.202	91.386	43.477	575.869
2010	21.050	32.313	53.828	57.079	61.628	63.390	63.718	64.645	66.601	76.780	77.406	154.734	53.363	793.172
2011	47.658	62.348	83.333	82.071	85.093	85.863	65.364	61.378	63.643	72.640	67.195	134.281	110.006	910.867
2012	31.219	43.827	68.957	66.014	74.820	74.781	65.122	60.848	73.197	62.677	75.045	121.113	75.046	817.620
2013	37.140	50.931	72.688	77.015	85.421	77.771	74.726	67.383	71.037	60.399	83.017	135.596	88.071	893.124
2014	34.288	37.502	0	0	0	0	0	0	0	0	0	0	71.790	71.790

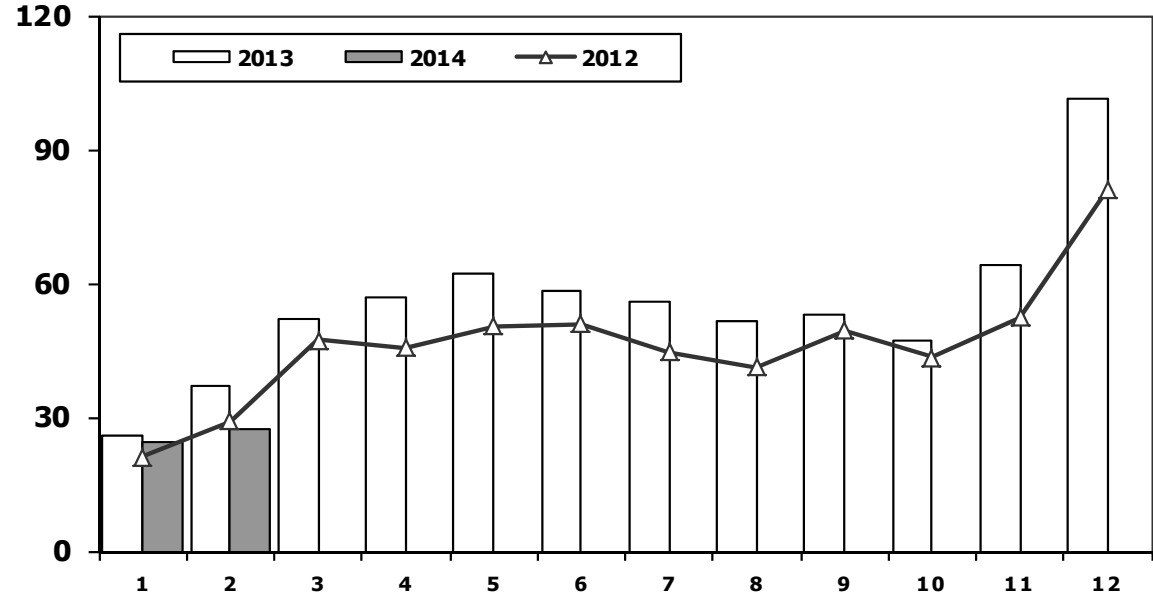
Otomobil Pazarının Analizi (x1000)

P.Cars Market Analysis (x1000)



Otomobil Pazarı (x1000)

P.Cars Market (x1000)

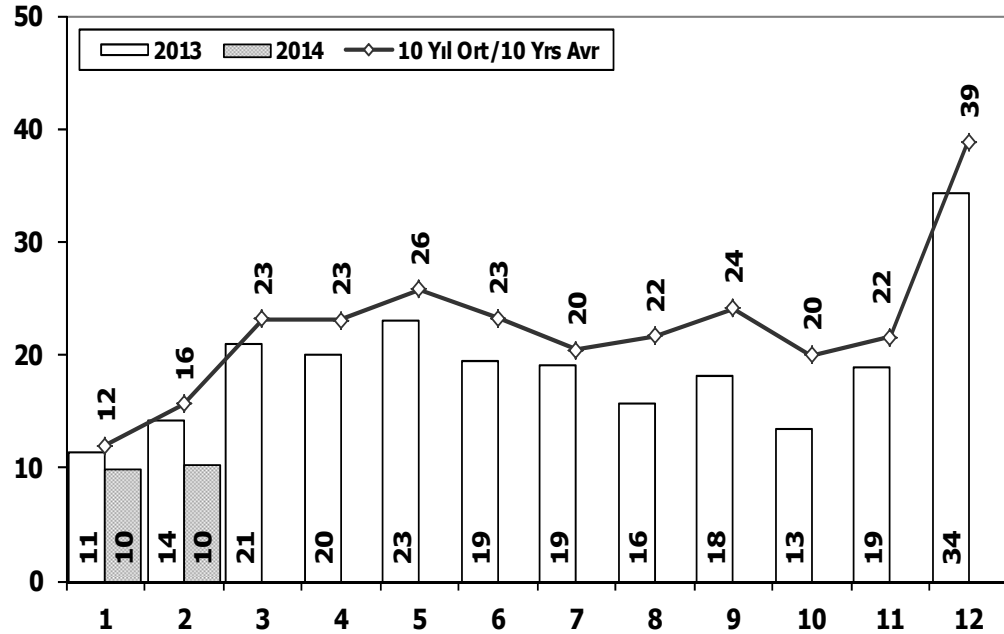


Aylar / Months	10 Yil Ort. 10 Yrs Avr. (x1000)	2014 (x1000)	%
1	18,8	24,4	29,6
2	24,8	27,2	9,5
Total	43,6	51,5	18,1

	1	2	3	4	5	6	7	8	9	10	11	12	2 Ay/Mo	Total
2004	25.625	23.695	46.075	47.995	54.610	37.671	33.410	33.709	33.383	34.292	30.547	50.197	49.320	451.209
2005	11.595	21.012	38.129	36.206	38.480	40.900	38.969	38.648	36.410	34.960	37.841	65.447	32.607	438.597
2006	16.506	24.929	36.996	40.177	48.521	32.982	22.653	24.873	27.517	21.237	30.477	46.351	41.435	373.219
2007	13.186	17.212	24.336	25.204	29.067	30.126	28.246	28.469	27.662	32.569	39.643	61.745	30.398	357.465
2008	18.588	21.196	34.147	30.313	31.477	28.724	25.530	26.102	27.053	19.788	17.201	25.879	39.784	305.998
2009	13.173	14.492	40.622	36.202	44.188	41.019	16.637	22.537	52.162	13.828	17.781	57.178	27.665	369.819
2010	12.594	20.651	33.958	36.549	40.467	42.086	41.399	42.222	42.477	47.859	50.061	99.461	33.245	509.784
2011	29.868	39.004	54.023	53.835	56.302	56.714	43.518	38.875	39.964	47.508	44.951	88.957	68.872	593.519
2012	21.077	29.189	47.270	45.645	50.460	50.849	44.531	41.236	49.360	43.440	52.297	80.926	50.266	556.280
2013	25.835	36.814	51.785	56.999	62.383	58.290	55.712	51.611	52.925	46.985	64.117	101.199	62.649	664.655
2014	24.368	27.167	0	0	0	0	0	0	0	0	0	0	51.535	51.535

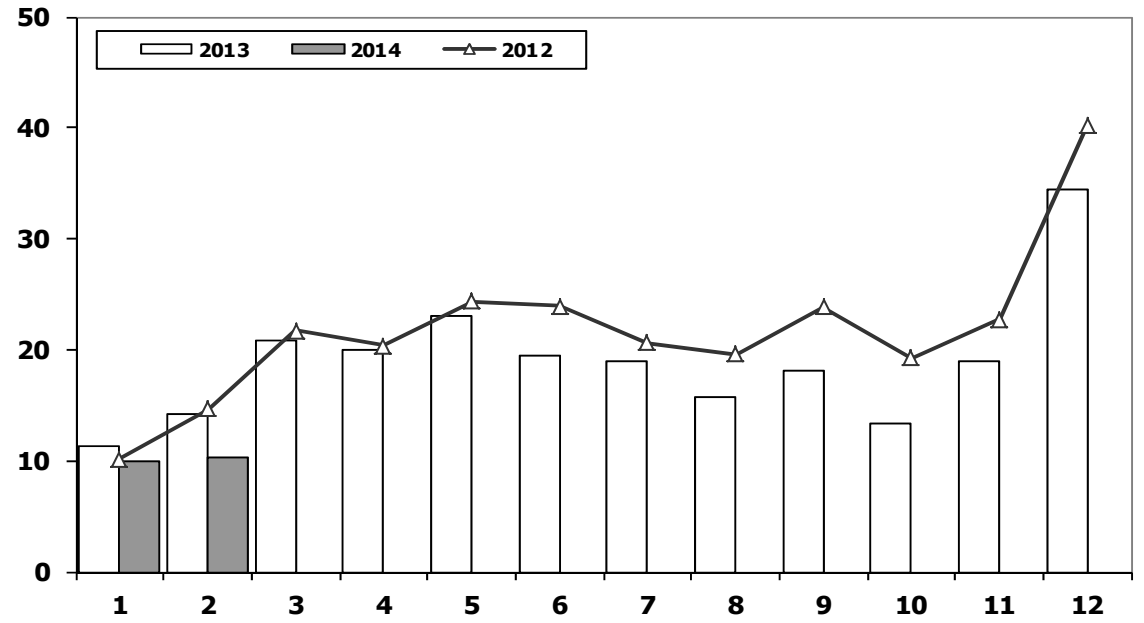
Ticari Araç Pazarının Analizi (x1000)

CV Market Analysis (x1000)



Ticari Araç Pazarı (x1000)

CV Total Market (Local + Imports) (x1000)

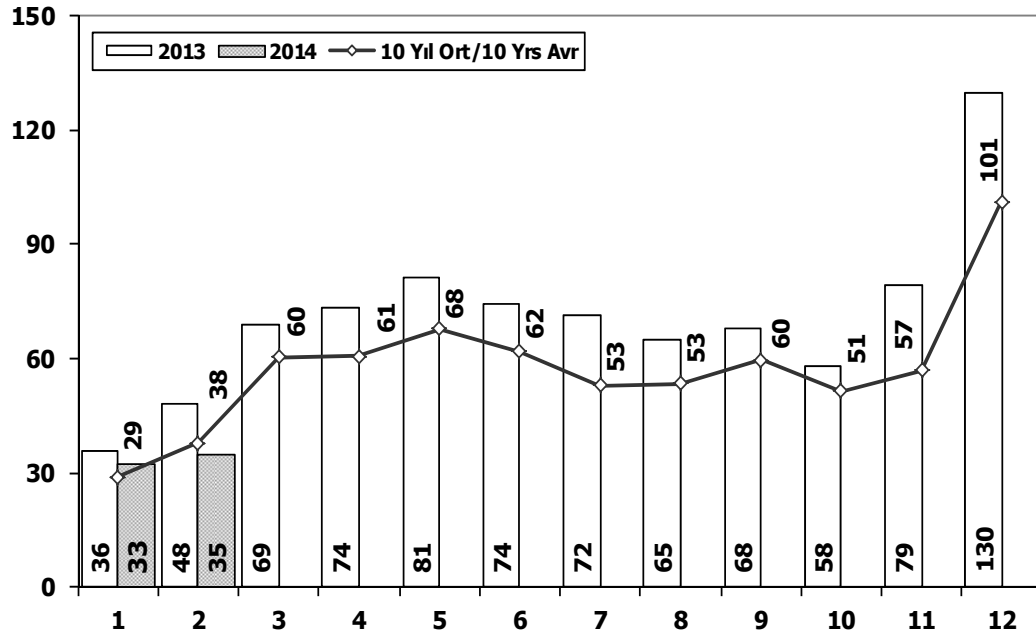


Aylar / Months	10 Yil Ort. 10 Yrs Avr. (x1000)	2014 (x1000)	%
1	12,0	9,9	-17,1
2	15,6	10,3	-33,8
Total	27,6	20,3	-26,6

	1	2	3	4	5	6	7	8	9	10	11	12	2 Ay/Mo	Total
2004	12.996	15.694	25.648	29.061	30.024	25.557	23.897	22.713	26.046	21.861	21.690	34.873	28.690	290.060
2005	11.092	17.279	26.373	24.667	32.903	23.479	24.878	29.999	30.170	25.831	27.878	45.391	28.371	319.940
2006	13.463	19.717	28.094	28.676	34.768	25.221	17.384	22.501	22.112	18.568	25.421	36.371	33.180	292.296
2007	11.764	14.490	21.152	20.429	22.188	21.535	21.871	25.702	22.416	23.489	27.374	44.331	26.254	276.741
2008	15.204	16.925	22.667	20.654	20.150	20.669	19.162	20.490	19.776	15.359	10.951	18.539	32.129	220.546
2009	7.458	8.354	15.909	18.224	20.699	22.083	13.609	14.555	31.241	8.289	11.421	34.208	15.812	206.050
2010	8.456	11.662	19.870	20.530	21.161	21.304	22.319	22.423	24.124	28.921	27.345	55.273	20.118	283.388
2011	17.790	23.344	29.310	28.236	28.791	29.149	21.846	22.503	23.679	25.132	22.244	45.324	41.134	317.348
2012	10.142	14.638	21.687	20.369	24.360	23.932	20.591	19.612	23.837	19.237	22.748	40.187	24.780	261.340
2013	11.305	14.117	20.903	20.016	23.038	19.481	19.014	15.772	18.112	13.414	18.900	34.397	25.422	228.469
2014	9.920	10.335	0	0	0	0	0	0	0	0	0	0	20.255	20.255

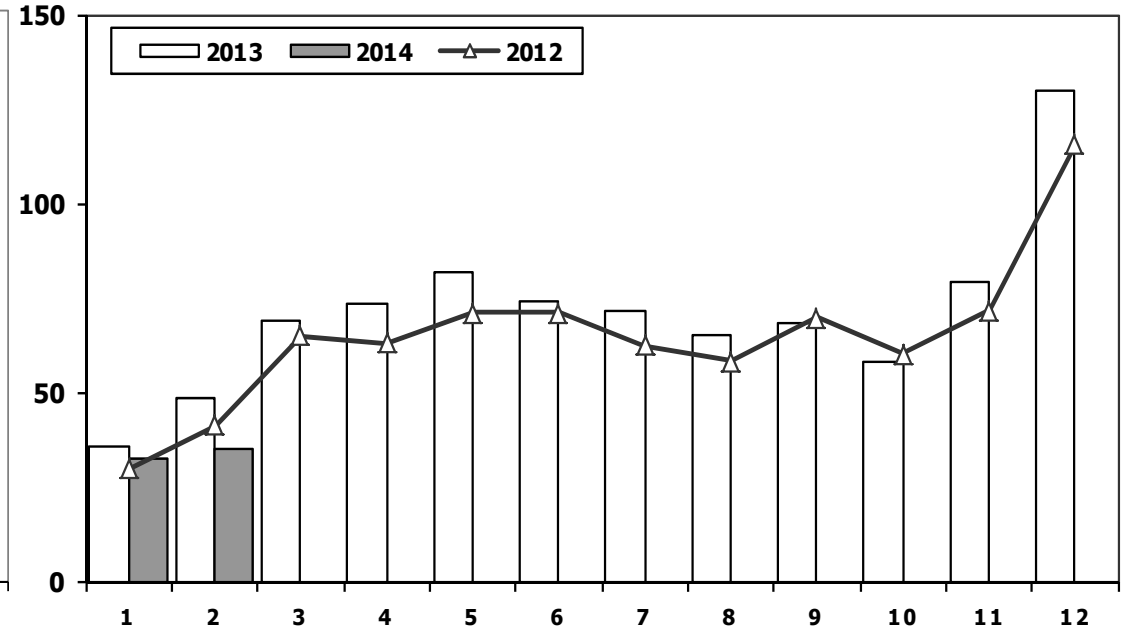
Hafif Araç Pazarının Analizi (x1000)

LV Market Analysis (x1000)



Hafif Araç Pazarı (x1000)

LV Total Market (Local + Imports) (x1000)

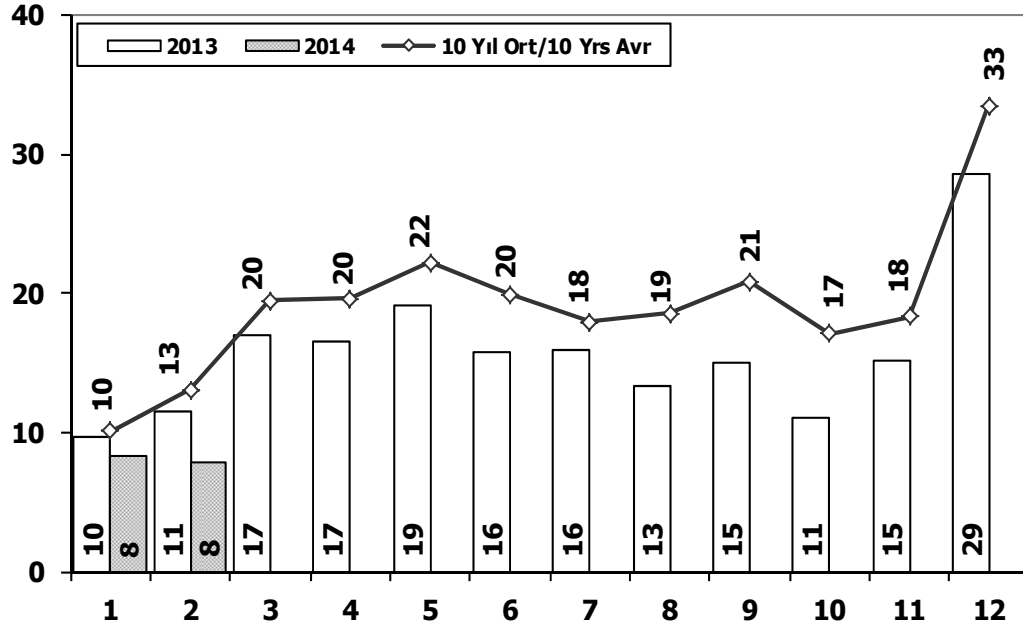


Aylar / Months	10 Yil Ort. 10 Yrs Avr. (x1000)	2014 (x1000)	%
1	28,9	32,7	12,9
2	37,9	35,0	-7,7
Total	66,9	67,7	1,2

	1	2	3	4	5	6	7	8	9	10	11	12	2 Ay/Mo	Total
2004	36.352	37.079	67.144	73.075	80.290	59.730	54.816	52.876	55.609	53.000	49.200	78.924	73.431	698.095
2005	20.747	35.766	60.707	56.844	67.357	60.796	61.015	64.011	61.954	56.638	61.364	103.209	56.513	710.408
2006	27.917	40.938	60.052	64.038	78.229	54.355	37.251	43.767	46.109	36.542	51.867	76.787	68.855	617.852
2007	23.117	29.184	41.890	42.366	47.938	48.674	47.490	50.558	46.581	52.725	63.313	100.926	52.301	594.762
2008	31.527	35.251	53.649	47.701	48.598	46.324	42.156	43.670	43.932	32.884	26.253	42.078	66.778	494.023
2009	19.606	21.742	55.111	52.640	63.191	61.067	28.845	35.609	81.397	21.033	27.962	88.923	41.348	557.126
2010	20.095	31.172	51.769	54.946	59.377	60.896	61.345	61.764	63.814	73.404	73.962	148.369	51.267	760.913
2011	44.892	58.663	78.403	77.695	80.646	81.573	63.044	58.406	60.129	69.421	63.657	127.910	103.555	864.439
2012	29.545	41.324	64.884	62.949	70.863	71.067	62.304	58.148	69.629	59.938	71.710	115.400	70.869	777.761
2013	35.523	48.307	68.774	73.575	81.468	74.096	71.596	65.043	67.963	58.014	79.301	129.718	83.830	853.378
2014	32.670	35.021	0	0	0	0	0	0	0	0	0	0	67.691	67.691

Hafif Ticari Araç Pazarının Analizi (x1000)

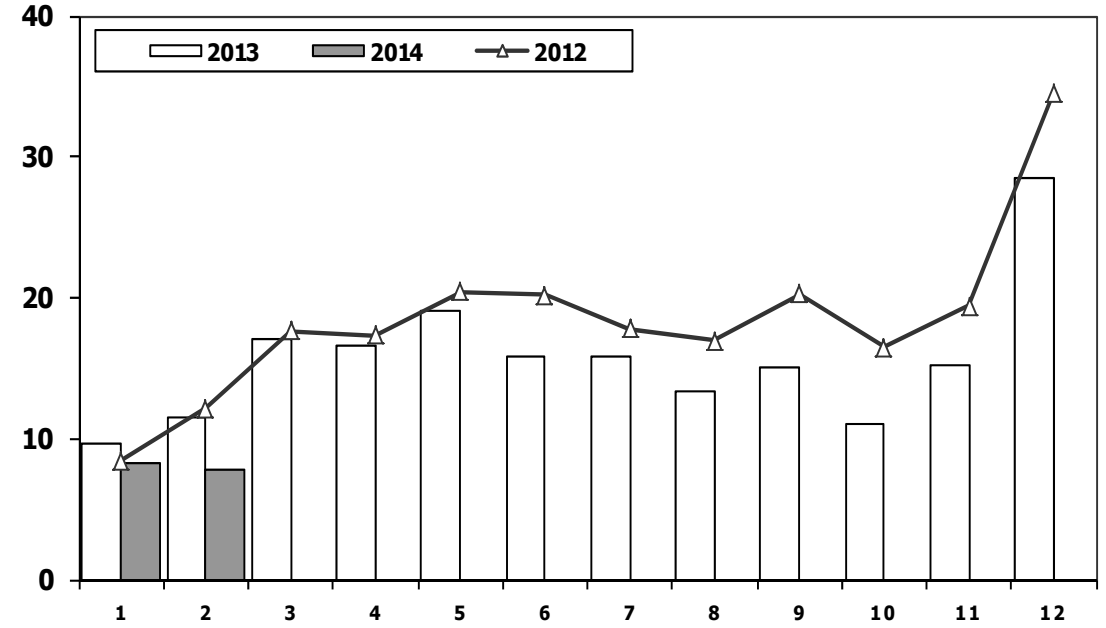
LCV Market Analysis (x1000)



Aylar / Months	10 Yil Ort. 10 Yrs Avr. (x1000)	2013 (x1000)	%
1	10,1	8,3	-18,0
2	13,1	7,9	-40,2
Total	23,3	16,2	-30,5

Hafif Ticari Araç Pazarı (x1000)

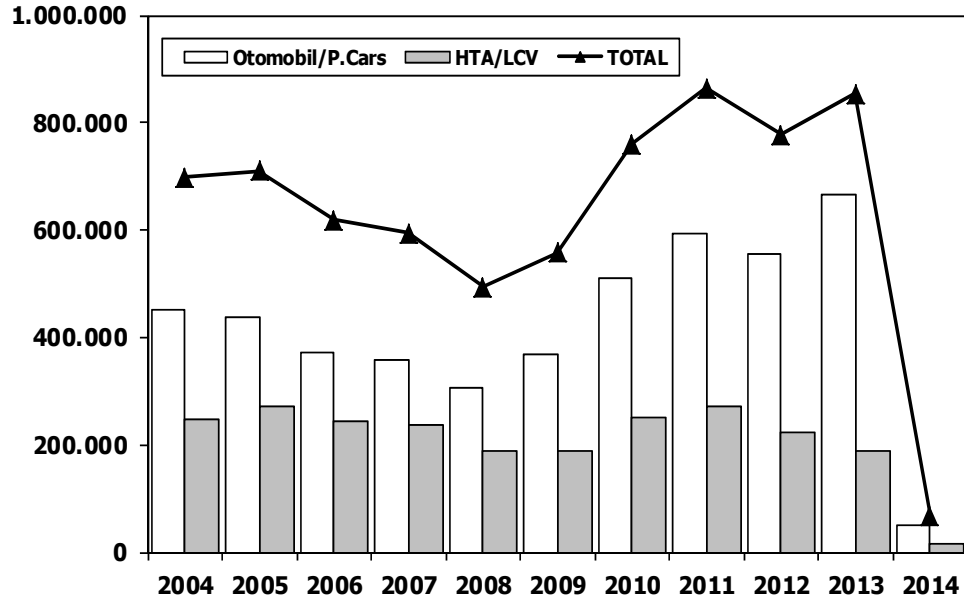
LCV Total Market (Local + Imports) (x1000)



	1	2	3	4	5	6	7	8	9	10	11	12	2 Ay/Mo	Total
2004	10.727	13.384	21.069	25.080	25.680	22.059	21.406	19.167	22.226	18.708	18.653	28.727	24.111	246.886
2005	9.152	14.754	22.578	20.638	28.877	19.896	22.046	25.363	25.544	21.678	23.523	37.762	23.906	271.811
2006	11.411	16.009	23.056	23.861	29.708	21.373	14.598	18.894	18.592	15.305	21.390	30.436	27.420	244.633
2007	9.931	11.972	17.554	17.162	18.871	18.548	19.244	22.089	18.919	20.156	23.670	39.181	21.903	237.297
2008	12.939	14.055	19.502	17.388	17.121	17.600	16.626	17.568	16.879	13.096	9.052	16.199	26.994	188.025
2009	6.433	7.250	14.489	16.438	19.003	20.048	12.208	13.072	29.235	7.205	10.181	31.745	13.683	187.307
2010	7.501	10.521	17.811	18.397	18.910	18.810	19.946	19.542	21.337	25.545	23.901	48.908	18.022	251.129
2011	15.024	19.659	24.380	23.860	24.344	24.859	19.526	19.531	20.165	21.913	18.706	38.953	34.683	270.920
2012	8.468	12.135	17.614	17.304	20.403	20.218	17.773	16.912	20.269	16.498	19.413	34.474	20.603	221.481
2013	9.688	11.493	16.989	16.576	19.085	15.806	15.884	13.432	15.038	11.029	15.184	28.519	21.181	188.723
2014	8.302	7.854	0	0	0	0	0	0	0	0	0	0	16.156	16.156

Hafif Araç Pazarı (AYA < 3.5 Ton)

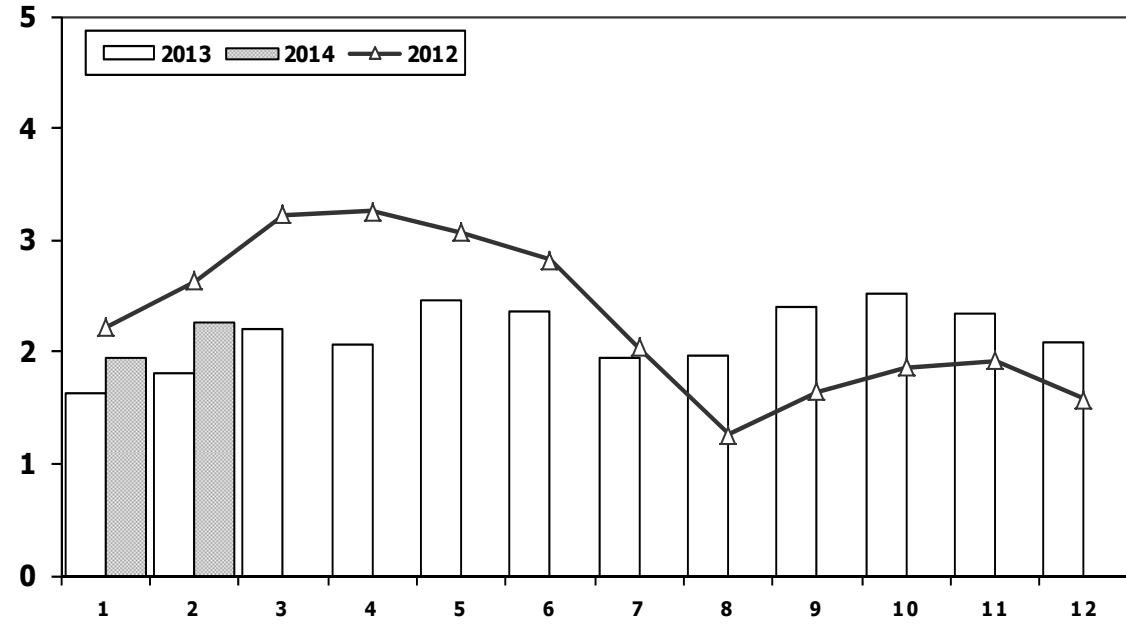
Light Vehicle Market (GVW < 3.5 Ton)



	2004	2005	2006	2007	2008	2009	2010	2011	2012	2013	2014
Otomobil/ P.Cars	451.209	438.597	373.219	357.465	305.998	369.819	509.784	593.519	556.280	664.655	51.535
HTA / LCV	246.886	271.811	244.633	237.297	188.025	187.307	251.129	270.920	221.481	188.723	16.156
TOTAL	698.095	710.408	617.852	594.762	494.023	557.126	760.913	864.439	777.761	853.378	67.691
HTA / LCV (%)	35	38	40	40	38	34	33	31	28	22	24

Traktör Pazarı (x1000)

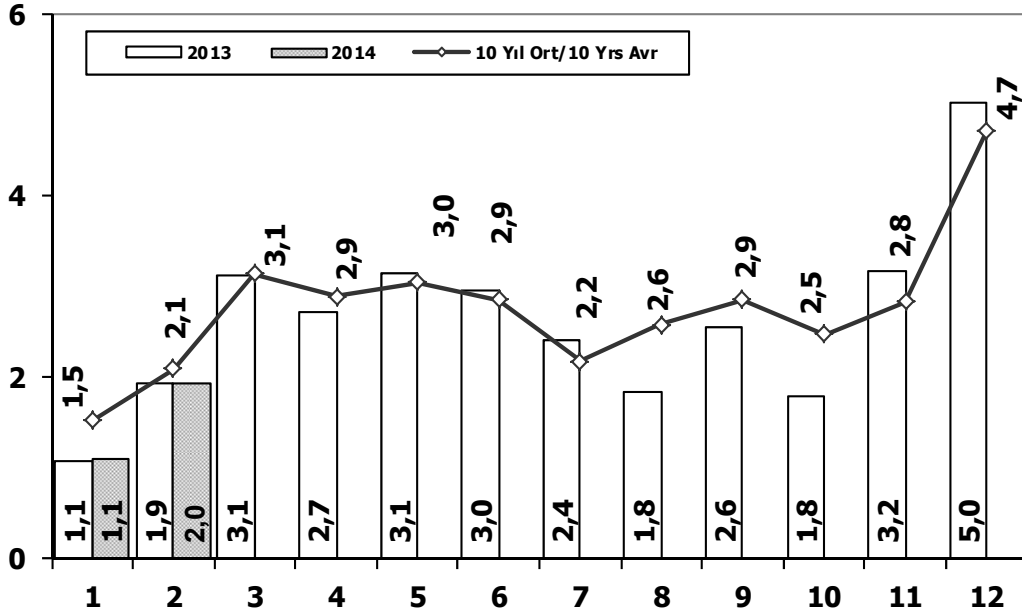
F.Tractor Market (x1000)



	1	2	3	4	5	6	7	8	9	10	11	12	2 Ay/Mo	Total
2004	1.946	1.874	2.909	3.260	2.863	2.816	1.988	2.209	2.509	1.989	2.198	1.364	3.820	27.925
2005	1.026	1.636	2.001	2.599	2.569	2.780	2.148	2.819	2.567	2.477	2.297	2.089	2.662	27.008
2006	1.578	2.493	2.746	2.841	3.561	2.356	1.685	2.177	2.756	1.915	2.353	1.925	4.071	28.386
2007	1.812	1.778	2.063	2.107	2.266	1.853	1.653	2.065	2.372	2.239	2.231	1.602	3.590	24.041
2008	1.510	1.427	1.933	1.692	1.689	1.592	1.275	924	904	609	707	359	2.937	14.621
2009	267	344	388	638	759	828	741	534	586	765	725	715	611	7.290
2010	714	903	1.432	1.653	1.736	1.673	1.613	1.527	2.351	2.787	2.656	2.345	1.617	21.390
2011	2.458	2.610	3.105	3.403	3.847	3.599	2.952	1.559	2.957	2.823	2.603	2.807	5.068	34.723
2012	2.216	2.632	3.223	3.259	3.067	2.821	2.037	1.262	1.648	1.858	1.921	1.579	4.848	27.523
2013	1.633	1.817	2.196	2.070	2.455	2.370	1.955	1.969	2.396	2.510	2.343	2.080	3.450	25.794
2014	1.941	2.256	0	0	0	0	0	0	0	0	0	0	4.197	4.197

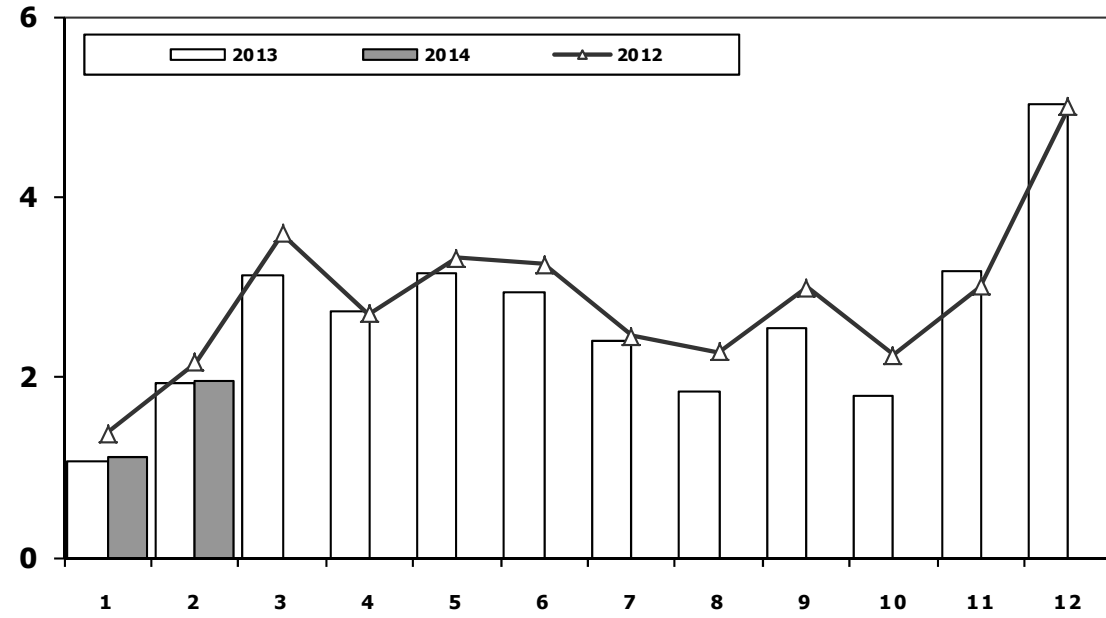
Kamyon Pazarının Analizi (x1000) AYA > 5 Ton

Truck Market Analysis (x1000) GVW > 5 Ton



Kamyon Pazarı (x1000) AYA > 5 Ton

Truck Market (x1000) GVW > 5 Ton

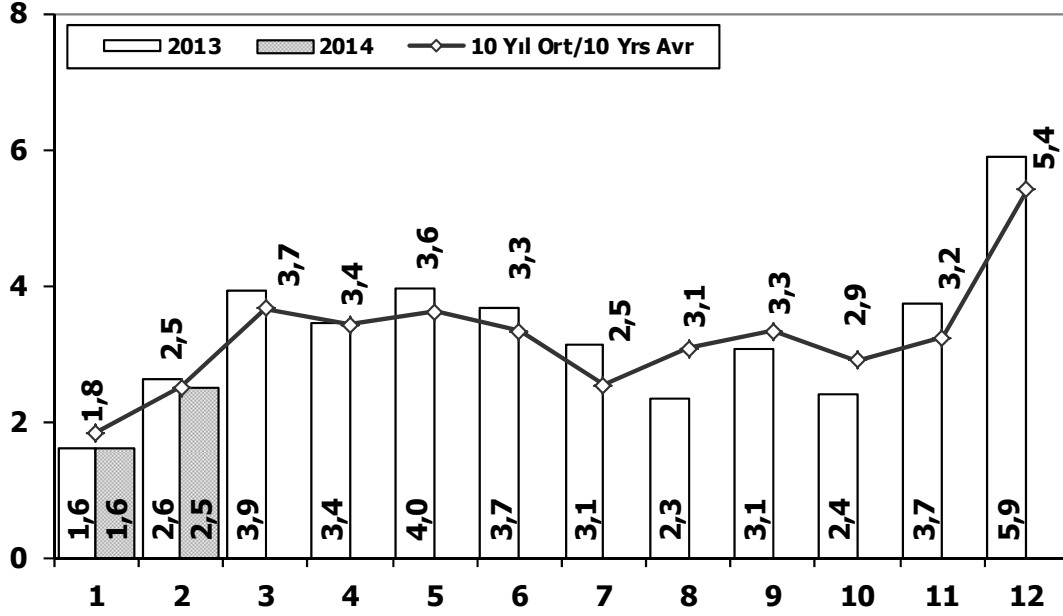


Aylar / Months	10 Yil Ort. 10 Yrs Avr. (x1000)	2014 (x100)	%
1	1,5	1,1	-26,8
2	2,1	2,0	-6,7
Total	3,6	3,1	-13,9

	1	2	3	4	5	6	7	8	9	10	11	12	2 Ay/Mo	Total
2004	1.863	1.949	3.983	3.352	3.651	3.118	2.234	2.897	3.285	2.727	2.629	5.517	3.812	37.205
2005	1.693	2.186	3.288	3.484	3.413	3.147	2.504	4.028	4.043	3.708	3.918	6.570	3.879	41.982
2006	1.767	3.310	4.467	4.180	4.449	3.398	2.472	3.142	3.052	2.926	3.550	5.358	5.077	42.071
2007	1.554	2.055	3.065	2.940	2.865	2.613	2.372	3.145	2.988	2.886	3.258	4.444	3.609	34.185
2008	1.797	2.309	2.621	2.578	2.459	2.526	2.067	2.377	2.390	1.790	1.512	1.834	4.106	26.260
2009	771	759	1.034	1.342	1.355	1.651	1.156	1.205	1.780	866	981	2.015	1.530	14.915
2010	777	968	1.772	1.807	1.966	2.205	2.093	2.446	2.444	3.071	3.136	5.677	1.745	28.362
2011	2.552	3.292	4.418	3.754	3.803	3.749	1.996	2.478	3.081	2.774	3.108	5.787	5.844	40.792
2012	1.375	2.159	3.595	2.697	3.321	3.250	2.450	2.277	2.991	2.244	3.006	5.000	3.534	34.365
2013	1.077	1.931	3.127	2.720	3.145	2.951	2.411	1.845	2.554	1.801	3.173	5.025	3.008	31.760
2014	1.115	1.951	0	0	0	0	0	0	0	0	0	0	3.066	3.066

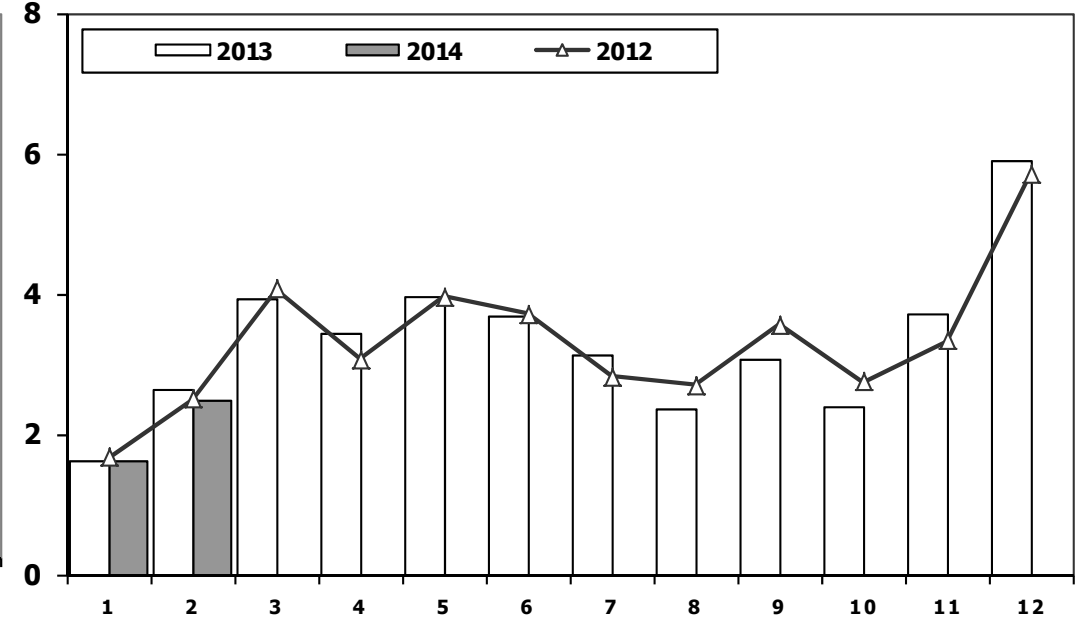
Ağır Ticari Araç Pazarının Analizi (x1000)

HCV Market Analysis (x1000)



Ağır Ticari Araç Pazarı (x1000)

HCV Market (x1000)

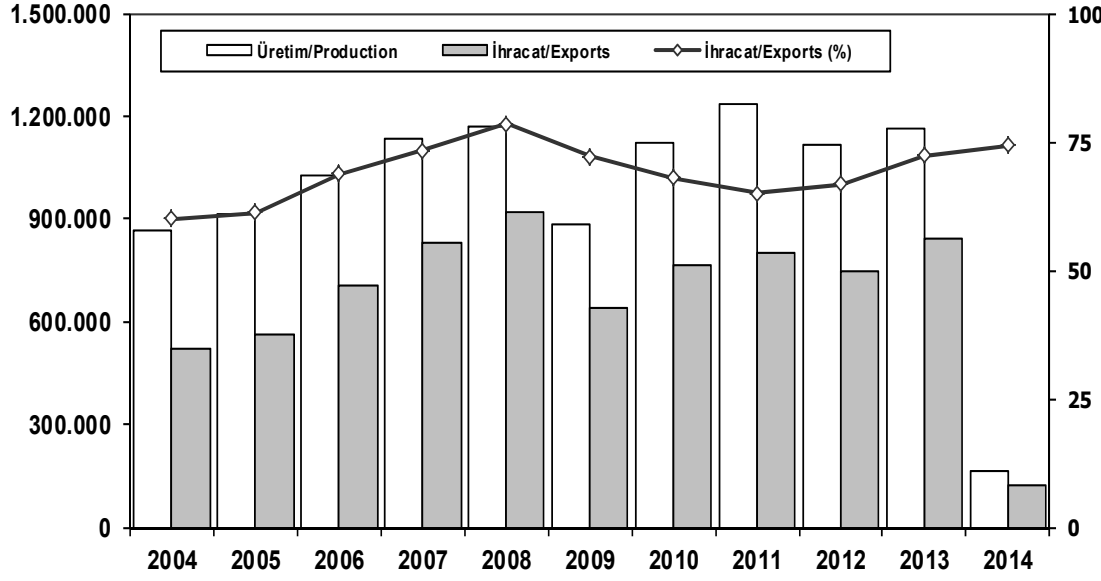


Aylar / Months	10 Yıl Ort. / 10 Yrs Avr. (x1000)	2013 (x1000)	%
1	1,8	1,6	-12,0
2	2,5	2,5	-0,7
Total	4,3	4,1	-5,5

	1	2	3	4	5	6	7	8	9	10	11	12	2 Ay/Mo	Total
2004	2.269	2.310	4.579	3.981	4.344	3.498	2.491	3.546	3.820	3.153	3.037	6.146	4.579	43.174
2005	1.940	2.525	3.795	4.029	4.026	3.583	2.832	4.636	4.626	4.153	4.355	7.629	4.465	48.129
2006	2.052	3.708	5.038	4.815	5.060	3.848	2.786	3.607	3.520	3.263	4.031	5.935	5.760	47.663
2007	1.833	2.518	3.598	3.267	3.317	2.987	2.627	3.613	3.497	3.333	3.704	5.150	4.351	39.444
2008	2.265	2.870	3.165	3.266	3.029	3.069	2.536	2.922	2.897	2.263	1.899	2.340	5.135	32.521
2009	1.025	1.104	1.420	1.786	1.696	2.035	1.401	1.483	2.006	1.084	1.240	2.463	2.129	18.743
2010	955	1.141	2.059	2.133	2.251	2.494	2.373	2.881	2.787	3.376	3.444	6.365	2.096	32.259
2011	2.766	3.685	4.930	4.376	4.447	4.290	2.320	2.972	3.514	3.219	3.538	6.371	6.451	46.428
2012	1.674	2.503	4.073	3.065	3.957	3.714	2.818	2.700	3.568	2.739	3.335	5.713	4.177	39.859
2013	1.617	2.624	3.914	3.440	3.953	3.675	3.130	2.340	3.074	2.385	3.716	5.878	4.241	39.746
2014	1.618	2.481	0	0	0	0	0	0	0	0	0	0	4.099	4.099

İhracat/Üretim (2004-2014)

Exports/Production (2004-2014)



	2004	2005	2006	2007	2008	2009	2010	2011	2012	2013	2014
Üretim/Production	864.073	916.062	1.026.427	1.132.951	1.171.917	884.466	1.124.982	1.234.637	1.115.233	1.166.043	165.278
İhracat/Exports	518.595	561.078	706.402	829.879	920.763	637.855	763.670	801.112	745.354	843.467	122.907
İhracat/Exports (%)	60	61	69	73	79	72	68	65	67	72	74

Taşıt Araçları İhracatı (2012-2014)

Motor Vehicle Exports (2012-2014)

SEKTÖR/SECTOR	2012	2013	2014		2013/2012 (%)
			2 Ay-2 Mo	2014	
OTOMOBİL / P.Cars	412.991	484.504	68.880	82.459	20
TİCARİ ARAÇLAR / CV	316.932	343.967	61.611	38.252	-38
* Kamyonet/Pick-Up	292.601	300.765	55.327	33.113	-40
* Minibüs/Minibus	16.429	34.664	5.506	4.392	-20
* Kamyon/Truck	2.682	3.055	150	166	11
* Midibüs/Midibus	1.173	985	193	74	-62
* Otobüs/Bus	4.047	4.498	435	507	17
TAŞIT ARAÇLARI / MV TOTAL	729.923	828.471	130.491	120.711	-7
TRAKTÖR/F.TRACTOR	15.431	14.996	2.115	2.196	4
TOTAL	745.354	843.467	132.606	122.907	-7

Otomotiv Ana ve Yan Sanayii İhracatı (ABD \$)

CBU and CKD Exports - \$

Ürün Grubu (Product Types)	2008	2009	2010	2011	2012	2013	Ocak-Şubat (January-February)		Değişim % (Change %)
							2013	2014	
Toplam Yan Sanayii (Total Component Industry)	6.815.010.471	5.036.315.783	6.595.662.583	8.307.826.870	8.215.954.295	9.065.989.776	1.447.265.022	1.627.167.996	12
İç Diş Lastik (Tyres)	943.930.286	813.344.978	988.990.821	1.373.205.546	1.199.572.093,47	1.130.088.420	197.395.762	215.259.001	9
Emniyet Camı (Safety Glasses)	129.693.764	90.975.616	107.203.983	120.041.467	120.641.763,30	135.200.030	21.997.892	26.266.656	19
Motor (Engine)	105.583.288	182.857.086	305.490.804	273.896.369	272.085.582,31	319.294.885	54.496.452	31.313.731	-43
Akü (Batteries)	194.460.614	147.844.133	186.504.496	232.611.079	250.104.807,27	306.455.257	62.341.448	47.513.707	-24
Diğer Aksam ve Parçalar (Others)	5.441.342.519	3.801.293.970	5.007.472.478	6.308.072.409	6.373.550.048,17	7.174.951.182	1.111.033.468	1.306.814.901	18
Toplam Ana Sanayii (Total Vehicle Industry)	15.138.693.360	9.893.379.844	10.855.476.447	12.128.522.618	11.100.457.162	12.497.186.221	1.850.586.082	1.871.379.517	1
otobüs (Bus)	1.257.990.095	934.530.219	744.935.284	929.372.870	855.424.303,62	937.790.963	100.485.849	111.680.449	11
Minibüs- Midibüs (Minibus- Minibus)	211.421.713	114.288.278	120.378.674	145.199.034	161.806.275,12	147.802.463	21.511.335	5.852.306	-73
Otomobil (P. Cars)	7.512.491.751	6.100.525.046	6.217.404.551	6.541.969.418	6.068.045.119,19	6.855.870.706,89	1.014.066.231	1.093.627.307	8
Kamyon-Kamyonet (HCV-LCV)	5.290.296.295	2.371.020.045	3.363.101.038	4.034.772.621	3.433.310.998,81	3.919.399.958	637.801.598	562.746.410	-12
Çekici (Truck-Tractor)	266.050.422	128.201.130	145.710.283	116.912.332	71.336.634,88	77.907.407	32.402.822	36.180.270	12
Römork ve Yarı Römork (Trailer-Semi Trailer)	376.862.369	67.706.067	72.145.150	147.247.613	195.093.536,78	218.649.302	5.114.087	5.499.308	8
Tarım Traktörü (Farm Tractor)	223.580.714	177.109.058	191.801.467	213.048.730	315.440.293,75	339.765.421	39.204.160	55.793.468	42
TOPLAM (Total)	21.953.703.831	14.929.695.627	17.451.139.030	20.436.349.488	19.316.411.457	21.563.175.997	3.297.851.104	3.498.547.513	6

Kaynak: Otomotiv Endüstrisi İhracatçıları Birliği

Firma Bazında İhracat (Adet)
Export Of member Companies (Unit)

FİRMALAR Companies	2012	2013	Ocak-Şubat 2 Months	
			2013	2014
OYAK RENAULT	227.162	266.508	43.100	37.431
TOFAŞ	154.068	160.309	29.519	22.683
HYUNDAI ASSAN	67.453	85.500	8.680	21.625
TOYOTA	63.549	86.908	8.535	19.173
FORD OTOSAN	191.149	208.722	37.362	18.934
TÜRK TRAKTÖR	14.572	14.402	2.090	2.064
M. BENZ TÜRK	4.054	5.331	346	343
HONDA TÜRKİYE	7.959	2.121	488	210
MAN TÜRKİYE	885	898	145	156
HATTAT TARIM	859	594	25	132
TEMSA GLOBAL	856	663	67	72
A.I.O.S.	943	770	167	72
OTOKAR	510	620	34	6
KARSAN	10.994	10.120	2.047	6
BMC	341	1	1	0
GENEL TOPLAM	745.354	843.467	132.606	122.907

Kaynak: OSD

Sektör Bazında İhracat (\$)
Exports on Sectorial Basis

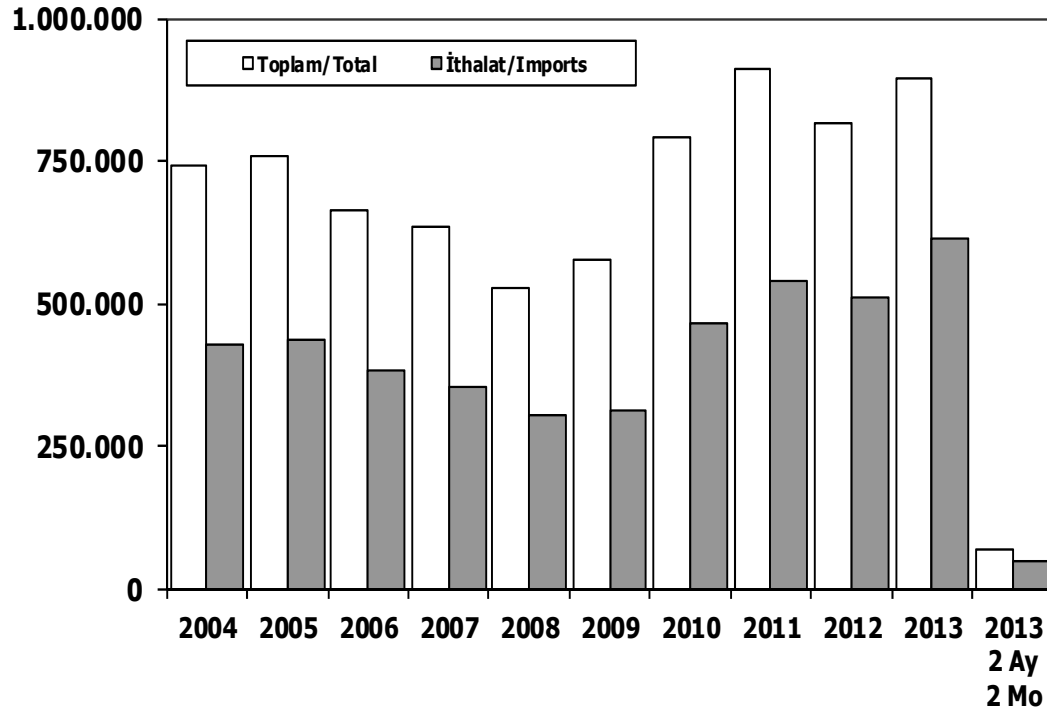
Sıra No	Sektörler	2013 Toplam	Ocak-Şubat			
			2013	2014	2014/2013 (%)	2014 (%) Pay
1	Otomotiv Endüstrisi	21.305.104	3.269.411	3.422.805	4,7	13,9
2	Hazırgiyim ve Konfeksiyon	17.372.633	2.782.124	3.078.694	10,7	12,5
3	Kimyevi Maddeler ve Mamülleri	17.441.096	2.745.432	2.845.067	3,6	11,6
4	Çelik	13.835.180	2.369.391	2.304.438	-2,7	9,4
6	Elektrik-Elektronik ve Makina	11.701.482	1.668.491	1.826.005	9,4	7,4
7	Tekstil ve Hammaddeleri	8.391.398	1.331.556	1.485.574	11,6	6,0
8	Hububat, Bakliyat, Yağlı Tohumlar	6.586.157	971.509	1.171.624	20,6	4,8
9	Demir ve Demir Dışı Metaller	6.834.461	1.064.756	1.162.220	9,2	4,7
10	Makine ve Aksamları	6.263.742	865.679	949.848	9,7	3,9
11	Madencilik Ürünleri	5.801.970	793.231	729.184	-8,1	3,0
12	Ağaç Mamülleri, Orman Ürünleri	5.042.322	621.329	707.211	13,8	2,9
13	İklimlendirme Sanayi	4.458.639	577.194	685.990	18,8	2,8
14	Çimento ve Toprak Ürünleri	4.200.543	468.460	490.805	4,8	2,0
15	Yaş Meyve ve Sebze	3.153.737	404.502	420.534	4,0	1,7
16	Su Ürünleri ve Hayvansal Mamuller	1.988.676	319.944	395.727	23,7	1,6
17	Mücevher	2.351.780	346.757	377.702	8,9	1,5
18	Hali	2.253.003	327.548	355.527	8,5	1,4
19	Fındık ve Mamülleri	2.196.267	311.898	338.336	8,5	1,4
20	Deri ve Deri Mamülleri	1.901.404	244.866	269.238	10,0	1,1
21	Kuru Meyve ve Mamülleri	1.773.285	215.569	228.203	5,9	0,9
22	Meyve Sebze Mamülleri	1.391.603	189.022	224.128	18,6	0,9
23	Savunma Sanayi	1.439.207	163.402	214.998	31,6	0,9
24	Tütün ve Mamülleri	1.331.417	167.738	179.413	7,0	0,7
25	Gemi ve Yat	1.163.591	211.355	143.708	-32,0	0,6
26	Zeytin ve Zeytinyağ	906.814	97.246	47.846	-50,8	0,2
27	Süs Bitkileri	104.659	14.218	16.575	16,6	0,1
28	Diğer Sanayi Ürünleri	439.742	15.818	15.757	-0,4	0,1
TOPLAM		151.629.912	23.073.919	24.565.546	6,5	100,0

Kaynak: TİM

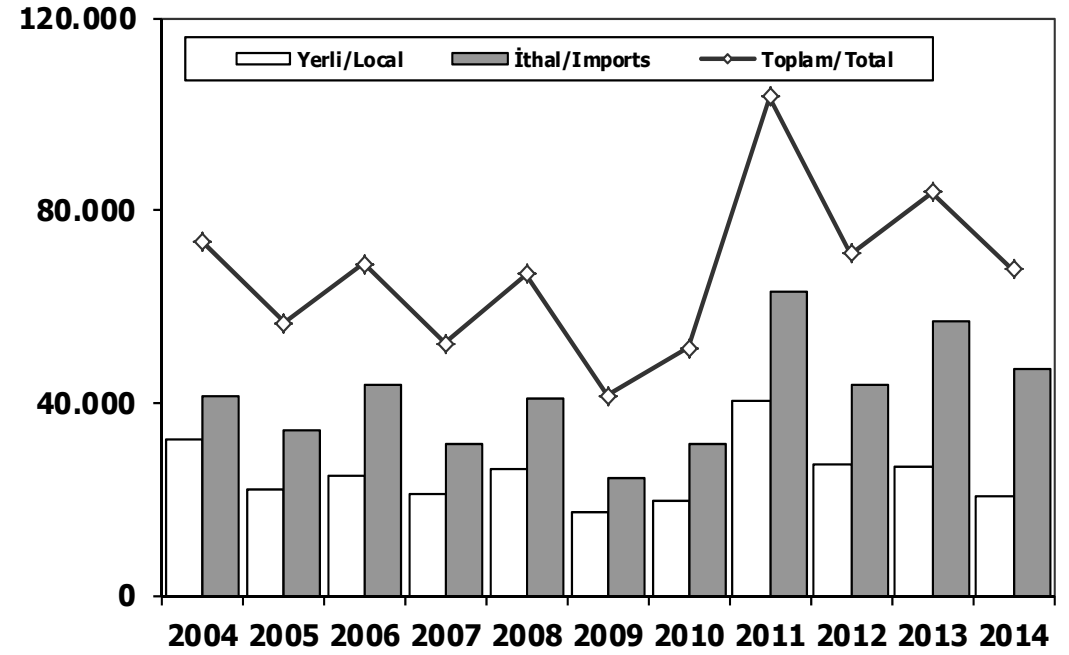
First 5 Sectors:

- 1- Transport Vehicle and Component Industry
- 2- Ready Wear and Confection
- 3-Chemical Articles and Products
- 4- Iron Steel Products
- 5-Electric-Electronic and Machine

Toplam Pazar (Otomobil+T.Araç) Total Market (P.Cars+C.V)



Hafif Araçlar Pazarı (2004-2014) LV Market (2004-2014)

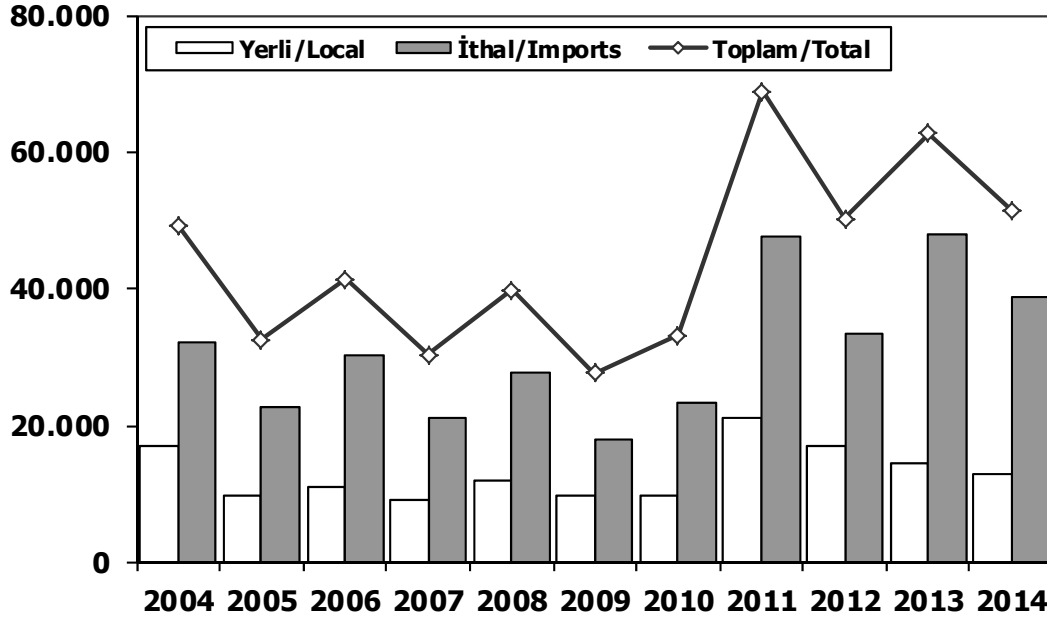


	2004	2005	2006	2007	2008	2009	2010	2011	2012	2013	2012 2 Ay 2 Mo	2013 2 Ay 2 Mo
Toplam/Total	741.269	758.537	665.515	634.206	526.544	575.869	793.172	910.867	817.620	893.124	88.071	71.790
İthalat/Imports	430.204	436.033	382.460	355.752	306.087	313.921	465.408	538.532	511.694	615.609	57.943	47.764
İthalat/Imports (%)	58	57	57	56	58	55	59	59	63	69	66	67

	2004	2005	2006	2007	2008	2009	2010	2011	2012	2013	2014
Yerli/Local	32.223	22.038	24.981	21.077	26.031	17.103	19.756	40.483	27.386	26.842	20.779
İthal/Imports	41.208	34.475	43.874	31.224	40.747	24.245	31.511	63.072	43.483	56.988	46.912
Toplam/Total	73.431	56.513	68.855	52.301	66.778	41.348	51.267	103.555	70.869	83.830	67.691
İthalat/Imports (%)	56	61	64	60	61	59	61	61	61	68	69

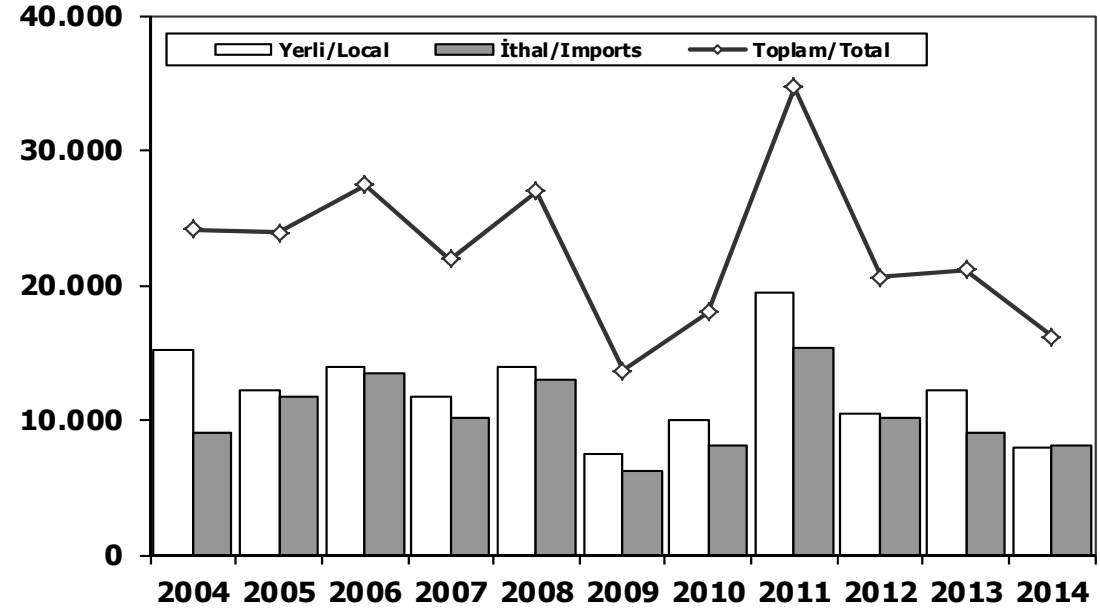
Otomobil Pazarı (2004-2014 Ocak-Şubat)

P.Cars Market (2004-2014 January-February)



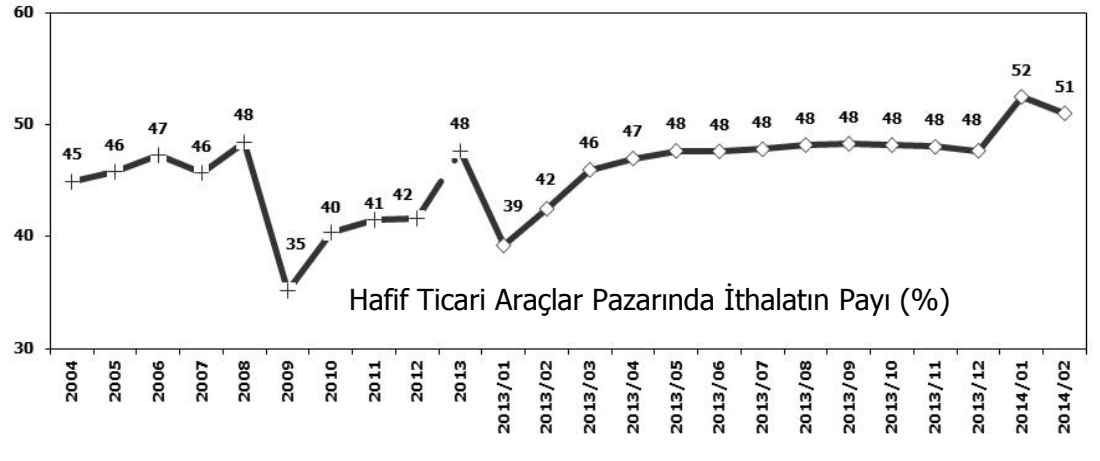
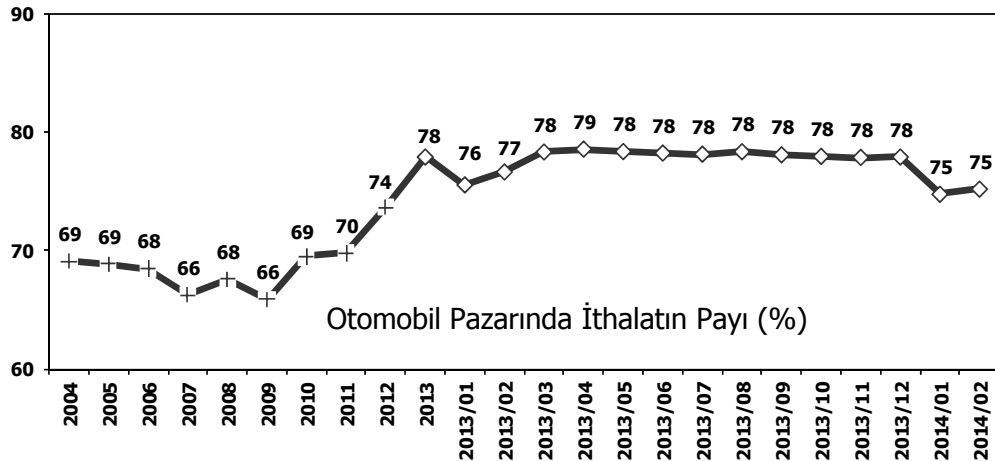
Hafif Ticari Araçlar Pazarı (2004-2014 Ocak-Şubat)

Light Commercial Vehicle Market (2004-2014 January-February)



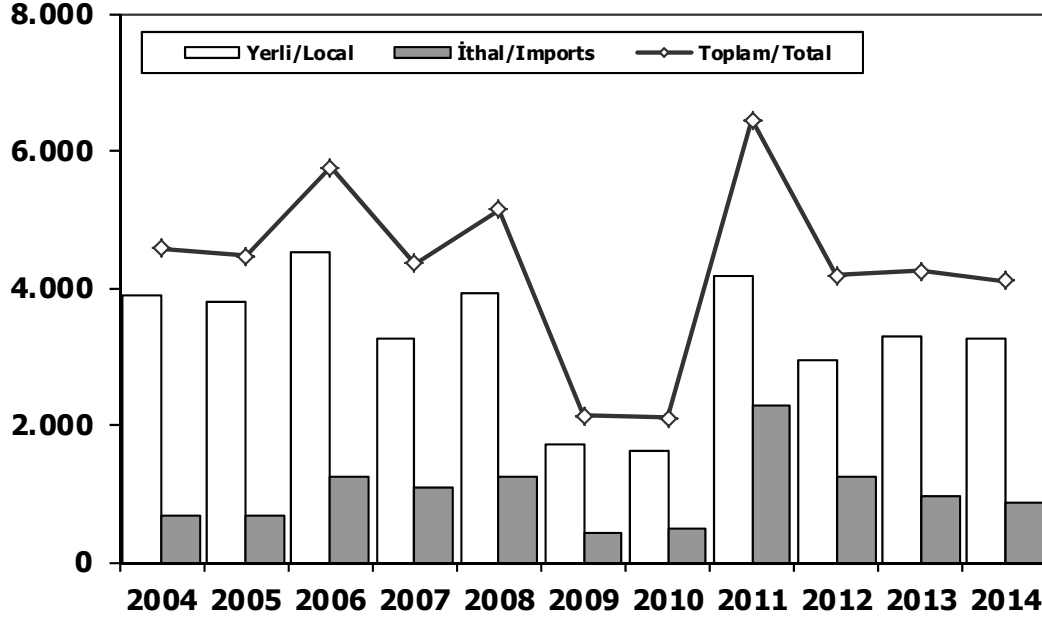
	2004	2005	2006	2007	2008	2009	2010	2011	2012	2013	2014
Yerli/Local	17.096	9.861	11.080	9.266	12.050	9.687	9.828	21.103	16.911	14.658	12.805
İthal/Imports	32.224	22.746	30.355	21.132	27.734	17.978	23.417	47.769	33.355	47.991	38.730
Toplam/Total	49.320	32.607	41.435	30.398	39.784	27.665	33.245	68.872	50.266	62.649	51.535
İthalat/Imports (%)	65	70	73	70	70	65	70	69	66	77	75

	2004	2005	2006	2007	2008	2009	2010	2011	2012	2013	2014
Yerli/Local	15.127	12.177	13.901	11.811	13.981	7.416	9.928	19.380	10.475	12.184	7.974
İthal/Imports	8.984	11.729	13.519	10.092	13.013	6.267	8.094	15.303	10.128	8.997	8.182
Toplam/Total	24.111	23.906	27.420	21.903	26.994	13.683	18.022	34.683	20.603	21.181	16.156
İthalat/Imports (%)	37	49	49	46	48	46	45	44	49	42	51



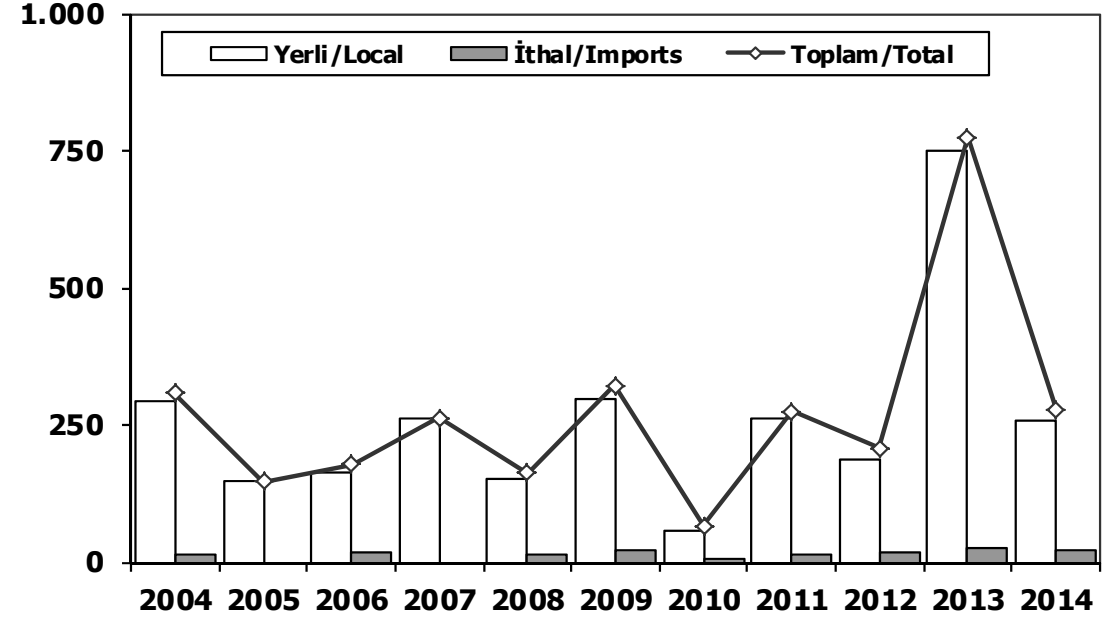
Ağır Ticari Araçlar Pazarı (2004-2014 Ocak-Şubat)

HCV Market (2004-2014 February-February)



Otobüs Pazarı (2004-2014 Ocak-Şubat)

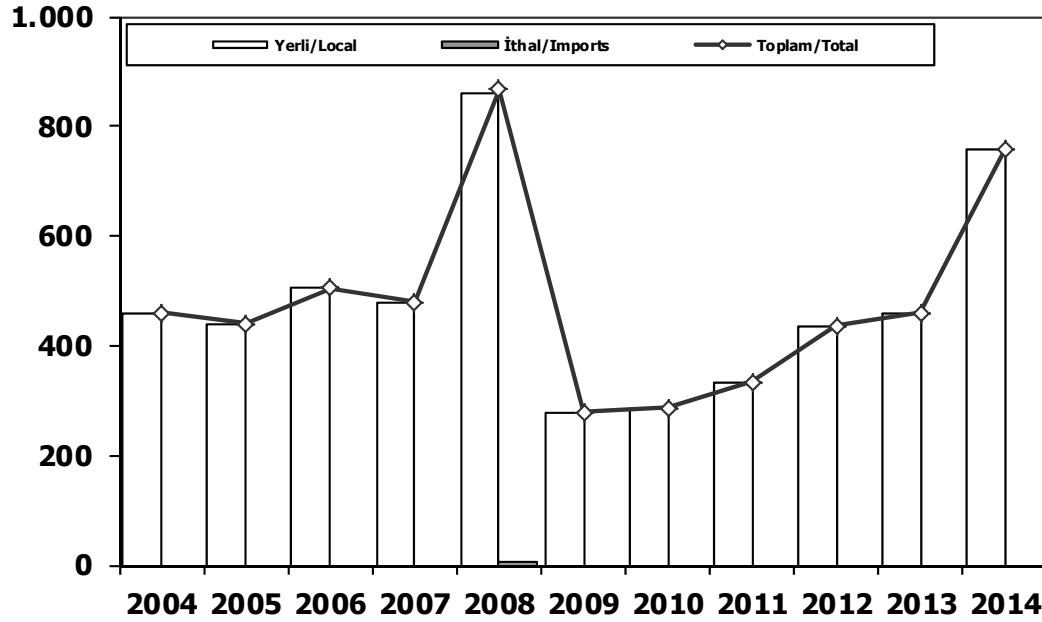
Bus Market (2004-2014 February-February)



	2004	2005	2006	2007	2008	2009	2010	2011	2012	2013	2014
Yerli/Local	3.904	3.796	4.505	3.257	3.906	1.712	1.622	4.183	2.935	3.286	3.247
İthal/Imports	675	669	1.255	1.094	1.229	417	474	2.268	1.242	955	852
Toplam/Total	4.579	4.465	5.760	4.351	5.135	2.129	2.096	6.451	4.177	4.241	4.099
İthalat/Imports (%)	15	15	22	25	24	20	23	35	30	23	21

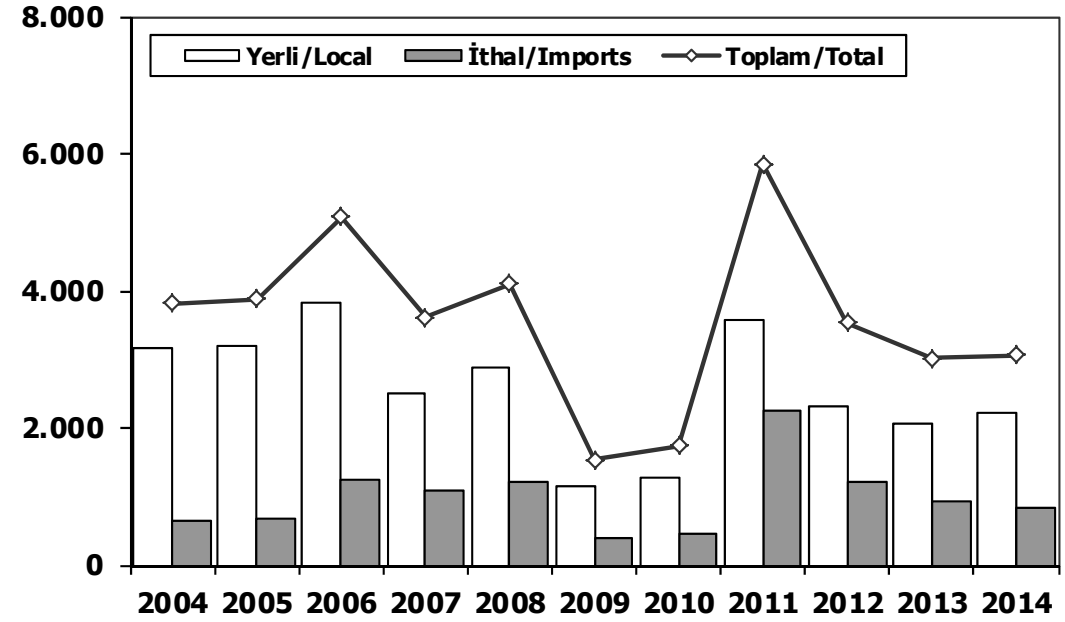
	2004	2005	2006	2007	2008	2009	2010	2011	2012	2013	2014
Yerli/Local	294	146	163	263	150	298	58	262	188	749	256
İthal/Imports	14	0	16	0	12	23	7	12	19	25	20
Toplam/Total	308	146	179	263	162	321	65	274	207	774	276
İthalat/Imports (%)	5	0	9	0	7	7	11	4	9	3	7

Midibüs Pazarı (2004-2014 Ocak-Şubat) (7-9 mt / 25-35 Kişilik) Midibus (2004-2014 February-February) Market (7-9 mt / 25-35 Passengers)



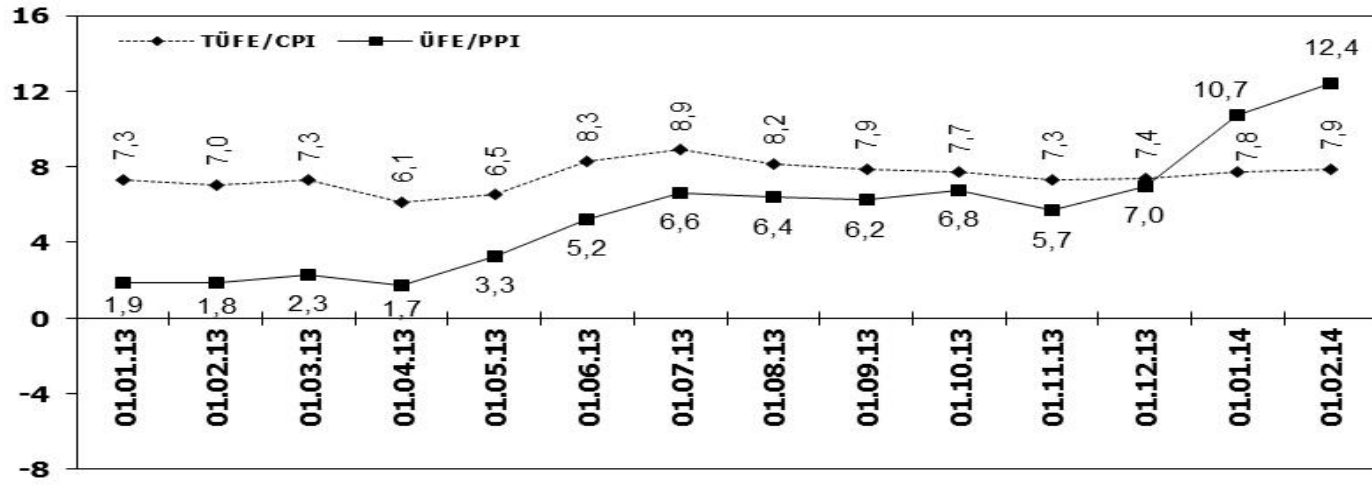
	2004	2005	2006	2007	2008	2009	2010	2011	2012	2013	2014
Yerli/Local	459	440	504	479	861	278	286	333	436	459	757
İthal/Imports	0	0	0	0	6	0	0	0	0	0	0
Toplam/Total	459	440	504	479	867	278	286	333	436	459	757
İthalat/Imports (%)	0	0	0	0	1	0	0	0	0	0	0

Kamyon Pazarı (2004-2014 Ocak-Şubat) Truck Market (2004-2014 February-February)

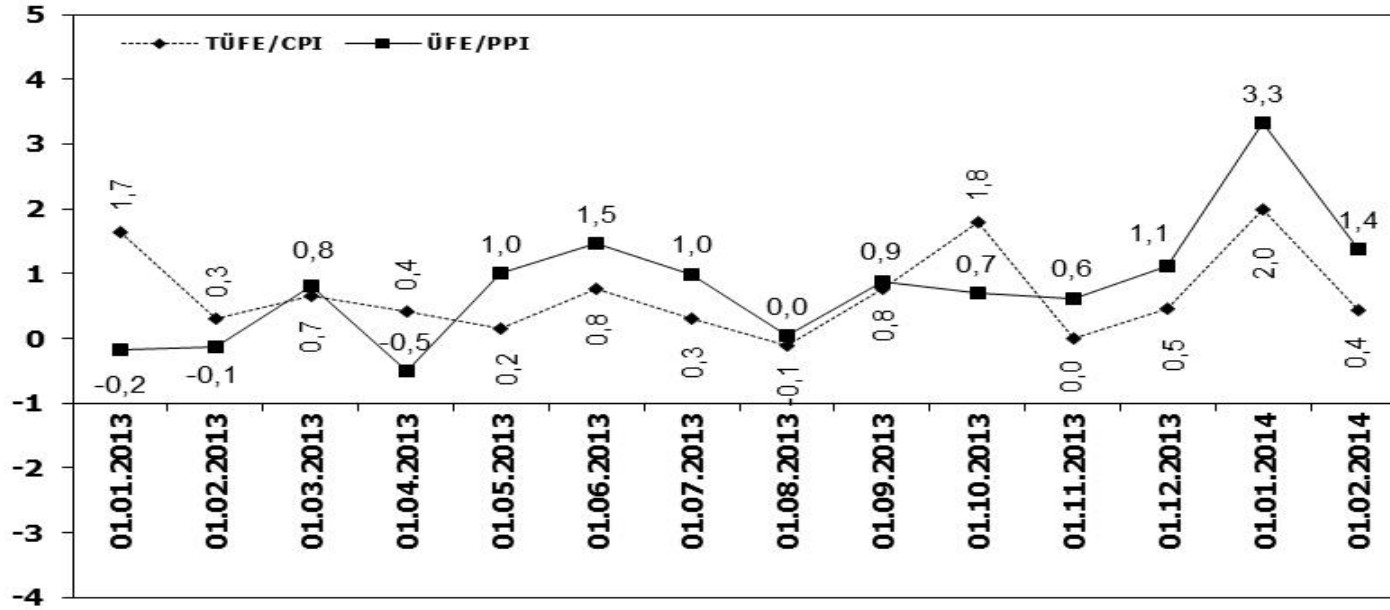


	2004	2005	2006	2007	2008	2009	2010	2011	2012	2013	2014
Yerli/Local	3.151	3.210	3.838	2.515	2.895	1.136	1.278	3.588	2.311	2.078	2.234
İthal/Imports	661	669	1.239	1.094	1.211	394	467	2.256	1.223	930	832
Toplam/Total	3.812	3.879	5.077	3.609	4.106	1.530	1.745	5.844	3.534	3.008	3.066
İthalat/Imports (%)	17	17	24	30	29	26	27	39	35	31	27

TÜFE ve ÜFE'nin Yıllık Değişimi (%) CPI and PPI Yearly Changes (%)



TÜFE ve ÜFE'nin Aylık Değişimi (%) CPI and PPI Monthly Changes (%)



2014 Yılı İthal Hafif Araç Satışları 2014 Light Vehicles Import Sales

	2013 TOPLAMI 2013 Total	1	2	3	4	5	6	7	8	9	10	11	12	2014 TOPLAMI 2014 Total
VOLKSWAGEN	88.304	4.242	5.080	0	0	0	0	0	0	0	0	0	0	9.322
RENAULT	32.904	1.719	1.616	0	0	0	0	0	0	0	0	0	0	3.335
OPEL	55.719	1.672	1.374	0	0	0	0	0	0	0	0	0	0	3.046
FORD	58.405	1.389	1.244	0	0	0	0	0	0	0	0	0	0	2.633
DACIA	28.901	1.158	1.229	0	0	0	0	0	0	0	0	0	0	2.387
NISSAN	18.417	741	1.603	0	0	0	0	0	0	0	0	0	0	2.344
HYUNDAI	29.824	882	1.125	0	0	0	0	0	0	0	0	0	0	2.007
PEUGEOT	23.068	622	871	0	0	0	0	0	0	0	0	0	0	1.493
MERCEDES	20.023	582	900	0	0	0	0	0	0	0	0	0	0	1.482
CITROEN	19.690	657	715	0	0	0	0	0	0	0	0	0	0	1.372
AUDI	14.987	455	750	0	0	0	0	0	0	0	0	0	0	1.205
SKODA	12.833	458	632	0	0	0	0	0	0	0	0	0	0	1.090
B.M.W	20.705	334	617	0	0	0	0	0	0	0	0	0	0	951
KIA	13.195	483	462	0	0	0	0	0	0	0	0	0	0	945
FIAT	10.913	587	313	0	0	0	0	0	0	0	0	0	0	900
SEAT	11.065	536	352	0	0	0	0	0	0	0	0	0	0	888
TOYOTA	22.421	366	363	0	0	0	0	0	0	0	0	0	0	729
VOLVO	5.021	252	256	0	0	0	0	0	0	0	0	0	0	608
HONDA	3.394	142	257	0	0	0	0	0	0	0	0	0	0	399
CHEVROLET	12.506	206	161	0	0	0	0	0	0	0	0	0	0	367
SUBARU	1.101	120	70	0	0	0	0	0	0	0	0	0	0	190
MITSUBISHI	1.488	83	81	0	0	0	0	0	0	0	0	0	0	164
SUZUKI	1.623	76	68	0	0	0	0	0	0	0	0	0	0	144
PROTON	715	110	22	0	0	0	0	0	0	0	0	0	0	132
MINI (İngiliz)	1.557	51	51	0	0	0	0	0	0	0	0	0	0	102
JEEP	973	31	66	0	0	0	0	0	0	0	0	0	0	97
ALFA ROMEO	1.030	60	26	0	0	0	0	0	0	0	0	0	0	86
LAND ROVER	1.323	26	52	0	0	0	0	0	0	0	0	0	0	78
PORSCHE	517	45	31	0	0	0	0	0	0	0	0	0	0	76
MAZDA	1.377	30	40	0	0	0	0	0	0	0	0	0	0	70
SSANGYONG	972	44	16	0	0	0	0	0	0	0	0	0	0	60
LANCIA	782	8	31	0	0	0	0	0	0	0	0	0	0	39
CHERY	492	17	16	0	0	0	0	0	0	0	0	0	0	33
GEELY	623	12	5	0	0	0	0	0	0	0	0	0	0	17
MASERATI	40	6	8	0	0	0	0	0	0	0	0	0	0	14
SMART	110	4	5	0	0	0	0	0	0	0	0	0	0	9
JAGUAR	97	0	8	0	0	0	0	0	0	0	0	0	0	8
FERRARI	23	0	3	0	0	0	0	0	0	0	0	0	0	3
BENTLEY	21	0	2	0	0	0	0	0	0	0	0	0	0	2
LAMBORGHINI	4	0	1	0	0	0	0	0	0	0	0	0	0	1
INFINITI	37	1	0	0	0	0	0	0	0	0	0	0	0	1
TATA	326	1	0	0	0	0	0	0	0	0	0	0	0	1
TOPLAM Total	517.526	18.208	20.522	0	0	0	0	0	0	0	0	0	0	38.730

2014 YILI İTHAL HAFİF TİCARİ ARAÇ SATIŞLARI / Light Commercial Vehicles Import 2014

	2013 TOPLAMI 2013 Total	1	2	3	4	5	6	7	8	9	10	11	12	2014 TOPLAMI 2014 Total
TOPLAM	89.906	4.356	3.826	0	0	0	0	0	0	0	0	0	0	8.182
VOLKSWAGEN	23.752	1.152	1.144	0	0	0	0	0	0	0	0	0	0	2.296
RENAULT	11.550	565	431	0	0	0	0	0	0	0	0	0	0	996
DACIA	7.494	510	400	0	0	0	0	0	0	0	0	0	0	910
MERCEDES	10.421	490	389	0	0	0	0	0	0	0	0	0	0	879
FIAT	6.245	397	455	0	0	0	0	0	0	0	0	0	0	852
MITSUBISHI	3.592	229	180	0	0	0	0	0	0	0	0	0	0	409
ISUZU	2.587	228	138	0	0	0	0	0	0	0	0	0	0	366
CITROEN	6.679	234	103	0	0	0	0	0	0	0	0	0	0	337
TOYOTA	2.413	139	105	0	0	0	0	0	0	0	0	0	0	244
IVECO	2.204	77	127	0	0	0	0	0	0	0	0	0	0	204
HYUNDAI	1.480	117	86	0	0	0	0	0	0	0	0	0	0	203
PEUGEOT	8.323	78	105	0	0	0	0	0	0	0	0	0	0	183
SSANGYONG	859	63	55	0	0	0	0	0	0	0	0	0	0	118
KIA	453	47	44	0	0	0	0	0	0	0	0	0	0	91
TATA	316	20	34	0	0	0	0	0	0	0	0	0	0	54
FORD	657	1	23	0	0	0	0	0	0	0	0	0	0	24
NISSAN	878	9	2	0	0	0	0	0	0	0	0	0	0	11
MAZDA	3	0	5	0	0	0	0	0	0	0	0	0	0	5