



OTOMOTİV SANAYİİ DERNEĐİ  
AUTOMOTIVE MANUFACTURERS ASSOCIATION

# AYLIK RAPOR

## Automotive Industry Monthly Report

Mart / March 2014

- **Üretim/Production**
- **Satış/Sales**
- **İthalat/Imports**
- **İhracat/Exports**

OSD "OICA" Üyesidir



OSD is a Member of "OICA"

## 2014 Mart Ayı Özeti / 2014 March Summary

KONULAR/ MATTERS		MART / MARCH			3 AY/ 3 MONTHS			SON 12 AYLIK / YoY		
		2013	2014	2014/2013 (%)	2013	2014	2014/2013 (%)	2013	2014	2014/2013 (%)
Üretim/ Production	Toplam/ Total	99.819	97.310	-3	277.146	255.492	-8	1.068.884	1.103.880	3
	Otomobil/ P.Cars	53.534	61.149	14	142.426	166.405	17	565.243	657.583	16
Pazar/ Market	Toplam/ Total	72.688	51.062	-30	160.759	122.852	-24	834.376	855.217	2
	Otomobil/ P.Cars	51.785	37.812	-27	114.434	89.347	-22	573.178	639.568	12
İthalat/ Import	Toplam/ Total	51.100	35.126	-31	109.043	82.890	-24	533.663	589.456	10
	Otomobil/ P.Cars	41.597	29.275	-30	89.588	68.005	-24	432.432	495.944	15
İhracat/ Export	Toplam/ Total	74.882	82.320	10	205.373	203.035	-1	734.913	826.133	12
	Otomobil/ P.Cars	41.864	53.949	29	110.744	136.408	23	411.226	510.168	24
İhracat / Export (\$)	Toplam/ Total **	1.862.887.207	2.160.957.337	16	5.160.738.311	5.655.191.170	10	19.438.999.418	22.197.093.826	14
	Otomobil/ P.Cars	650.216.557	717.252.061	10	1.664.282.787	1.807.483.688	9	6.094.544.871	6.999.071.608	15

PARAMETRELER / PARAMETERS		MART / MARCH			3 AY/ 3 MONTHS			SON 12 AYLIK / YoY		
		2013	2014	2014/2013 (%)	2013	2014	2014/2013 (%)	2013	2014	2014/2013 (%)
ÜFE/ PPI		0,81	0,74	**	0,50	5,52	**	2,30	12,31	**
TÜFE/ CPI		0,66	1,13	**	2,63	3,57	**	7,29	8,39	**
Sanayi Endeksi/ Industry Index		0,90	1,03	**	1,87	6,29	**	2,08	13,16	**
\$ (*)		1,8120	2,1596	19	1,7914	2,2149	24	1,7967	2,0385	13
EURO (*)		2,3230	2,9753	28	2,3578	3,0330	29	2,3145	2,7346	18
Japon Yeni (*)		1,9306	2,0991	9	1,9412	2,1616	11	2,1690	2,0175	-7

(\*) Ortalama Değerler / Average Values

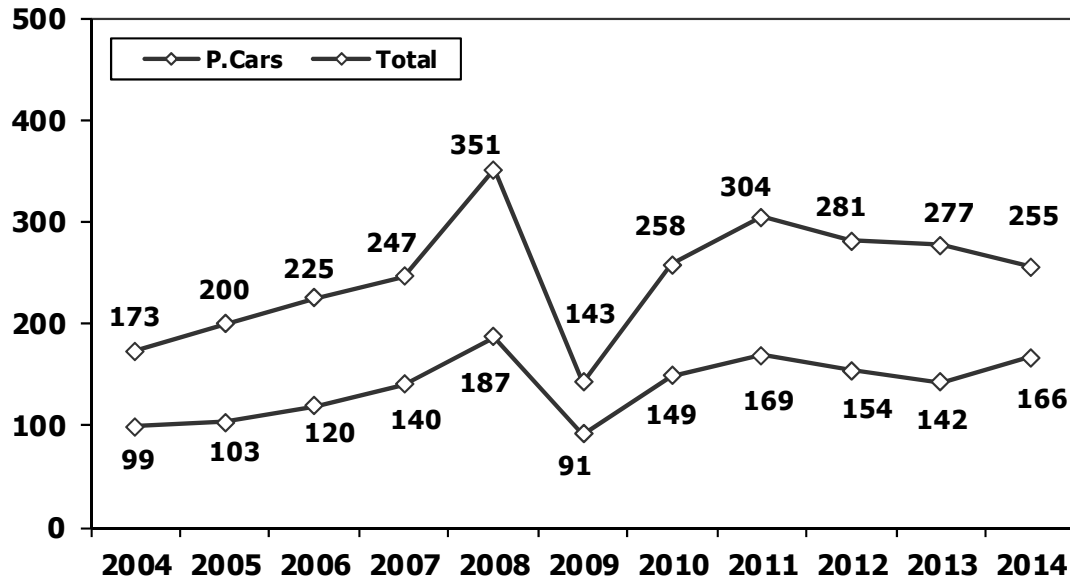
(\*\*) Toplam Sanayi / Total Industry Including Components

## 2013/2014 Yılları Üretim 2013/2014 Production

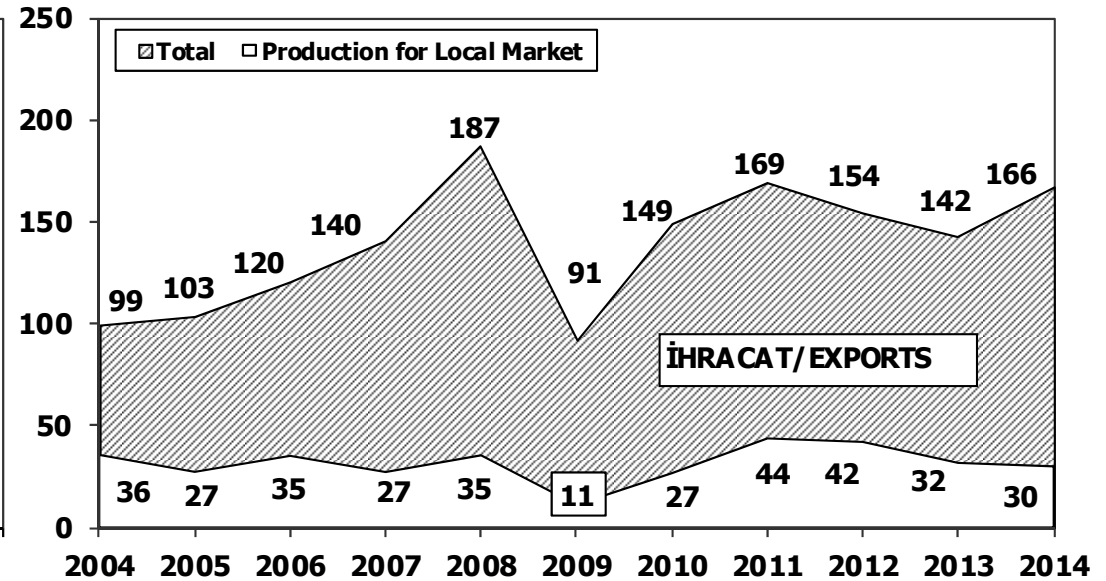
K.KAMYON : AYA 3.5-12 Ton (L.Truck:GVW 3.5-12 Ton)  
B.KAMYON : AYA 12 Ton'dan Büyük (M.Truck:GVW 12 Ton And Up)

TİPLER	MART AYI ÜRETİMİ March Production		3 AYLIK ÜRETİM 3 Months Production		DEĞİŞİM % Percent Change %	
	2013	2014	2013	2014	MART March	3 AY 3 Months
<b>OTOMOBİL - Pass.Car</b>	<b>53.534</b>	<b>61.149</b>	<b>142.426</b>	<b>166.405</b>	<b>14</b>	<b>17</b>
<b>TİCARİ ARAÇLAR - Commercial Vehicles</b>	<b>46.285</b>	<b>36.161</b>	<b>134.720</b>	<b>89.087</b>	<b>-22</b>	<b>-34</b>
* B. KAMYON - M. Truck	2.228	2.019	5.994	5.659	-9	-6
* K. KAMYON - L. Truck	292	289	1.046	856	-1	-18
* KAMYONET - Pick Up	39.136	29.903	114.362	73.123	-24	-36
* OTOBÜS - Bus	877	654	2.336	1.727	-25	-26
* MİNİBÜS - Minibus	3.291	2.762	9.693	6.053	-16	-38
* MİDİBÜS - Midibus	461	534	1.289	1.669	16	29
<b>TAŞIT ARAÇLARI TOPLAM - MV Total</b>	<b>99.819</b>	<b>97.310</b>	<b>277.146</b>	<b>255.492</b>	<b>-3</b>	<b>-8</b>
<b>TRAKTÖR - F.Tractor</b>	<b>3.316</b>	<b>4.456</b>	<b>9.356</b>	<b>11.552</b>	<b>34</b>	<b>23</b>
<b>GENEL TOPLAM - Grand Total</b>	<b>103.135</b>	<b>101.766</b>	<b>286.502</b>	<b>267.044</b>	<b>-1</b>	<b>-7</b>

**Toplam Üretim ve Otomobil Üretimi** (x1000) (Ocak-Mart)  
Total & P.Cars Production (x1000) (January- March)



**Otomobil Üretimi ve İhracat** (x1000) (Ocak-Mart)  
P.Cars Production & Exports (x1000) (January- March)



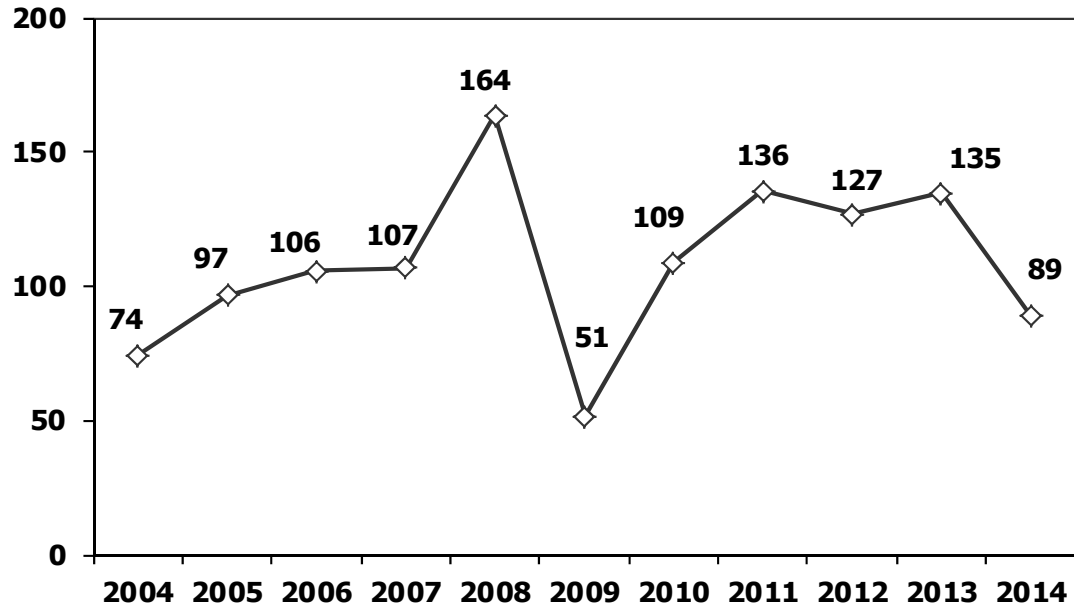
### 3 Aylık Üretim (3 Months Production)

FİRMALAR	OTOMOBİL	%	K.KAMYON	%	B.KAMYON	%	KAMYONET	%	OTOBÜS	%	MİNİBÜS	%	MİDİBÜS	%	TRAKTÖR	%	TOPLAM
A.I.O.S.	0	0	782	91	0	0	220	0	33	2	0	0	498	30	0	0	1.533
FORD OTOSAN	0	0	0	0	1.349	24	33.848	46	0	0	5.816	96	0	0	0	0	41.013
HATTAT TARIM	0	0	0	0	0	0	0	0	0	0	0	0	0	0	637	6	637
HONDA TÜRKİYE	3.566	2	0	0	0	0	0	0	0	0	0	0	0	0	0	0	3.566
HYUNDAI ASSAN	41.143	25	0	0	0	0	0	0	0	0	0	0	0	0	0	0	41.143
KARSAN	0	0	0	0	0	0	0	0	40	2	237	4	0	0	0	0	277
M. BENZ TÜRK	0	0	0	0	4.310	76	0	0	827	48	0	0	0	0	0	0	5.137
MAN TÜRKİYE	0	0	0	0	0	0	0	0	293	17	0	0	0	0	0	0	293
OTOKAR	0	0	74	9	0	0	70	0	94	5	0	0	706	42	0	0	944
OYAK RENAULT	74.387	45	0	0	0	0	0	0	0	0	0	0	0	0	0	0	74.387
TEMSA GLOBAL	0	0	0	0	0	0	0	0	440	25	0	0	465	28	0	0	905
TOFAŞ	12.811	8	0	0	0	0	38.985	53	0	0	0	0	0	0	0	0	51.796
TOYOTA	34.498	21	0	0	0	0	0	0	0	0	0	0	0	0	0	0	34.498
TÜRK TRAKTÖR	0	0	0	0	0	0	0	0	0	0	0	0	0	0	10.915	94	10.915
<b>TOPLAM</b>	<b>166.405</b>	<b>100</b>	<b>856</b>	<b>100</b>	<b>5.659</b>	<b>100</b>	<b>73.123</b>	<b>100</b>	<b>1.727</b>	<b>100</b>	<b>6.053</b>	<b>100</b>	<b>1.669</b>	<b>100</b>	<b>11.552</b>	<b>100</b>	<b>267.044</b>

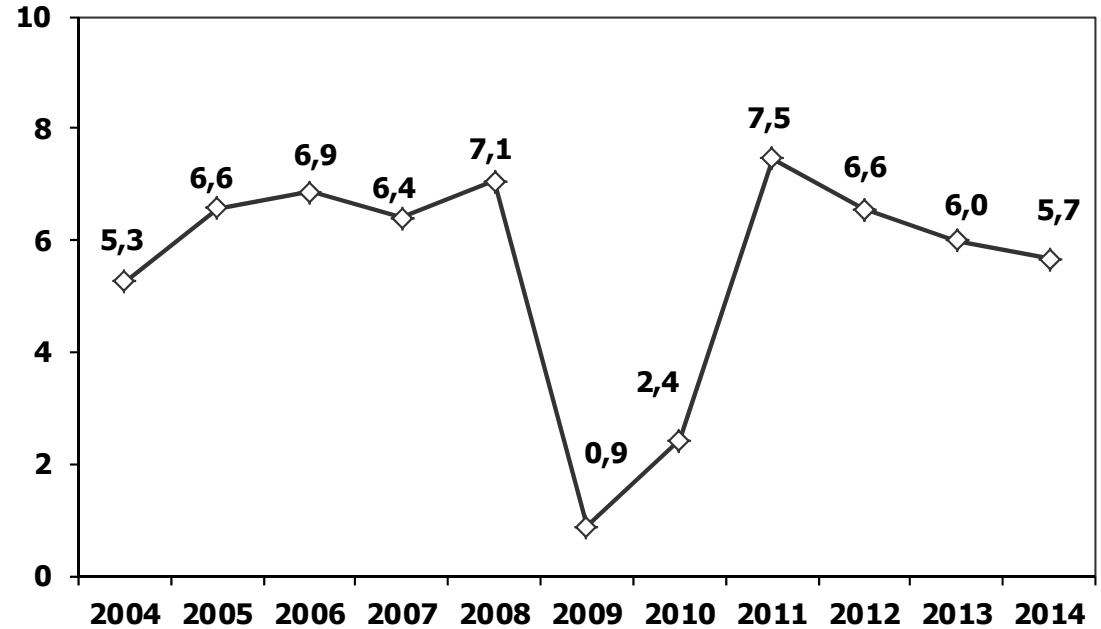
### Mart Ayı Üretimi (March Production)

FİRMALAR	OTOMOBİL	%	K.KAMYON	%	B.KAMYON	%	KAMYONET	%	OTOBÜS	%	MİNİBÜS	%	MİDİBÜS	%	TRAKTÖR	%	TOPLAM
A.I.O.S.	0	0	272	94	0	0	156	1	23	1	0	0	166	10	0	0	617
FORD OTOSAN	0	0	0	0	513	25	14.892	50	0	0	2.669	44	0	0	0	0	18.074
HATTAT TARIM	0	0	0	0	0	0	0	0	0	0	0	0	0	0	291	3	291
HONDA TÜRKİYE	1.046	2	0	0	0	0	0	0	0	0	0	0	0	0	0	0	1.046
HYUNDAI ASSAN	16.820	28	0	0	0	0	0	0	0	0	0	0	0	0	0	0	16.820
KARSAN	0	0	0	0	0	0	0	0	0	0	93	2	0	0	0	0	93
M. BENZ TÜRK	0	0	0	0	1.506	75	0	0	320	19	0	0	0	0	0	0	1.826
MAN TÜRKİYE	0	0	0	0	0	0	0	0	113	7	0	0	0	0	0	0	113
OTOKAR	0	0	17	6	0	0	25	0	58	3	0	0	243	15	0	0	343
OYAK RENAULT	28.468	47	0	0	0	0	0	0	0	0	0	0	0	0	0	0	28.468
TEMSA GLOBAL	0	0	0	0	0	0	0	0	140	8	0	0	125	7	0	0	265
TOFAŞ	4.423	7	0	0	0	0	14.830	50	0	0	0	0	0	0	0	0	19.253
TOYOTA	10.392	17	0	0	0	0	0	0	0	0	0	0	0	0	0	0	10.392
TÜRK TRAKTÖR	0	0	0	0	0	0	0	0	0	0	0	0	0	0	4.165	36	4.165
<b>TOPLAM</b>	<b>61.149</b>	<b>100</b>	<b>289</b>	<b>100</b>	<b>2.019</b>	<b>100</b>	<b>29.903</b>	<b>100</b>	<b>654</b>	<b>38</b>	<b>2.762</b>	<b>46</b>	<b>534</b>	<b>32</b>	<b>4.456</b>	<b>39</b>	<b>101.766</b>

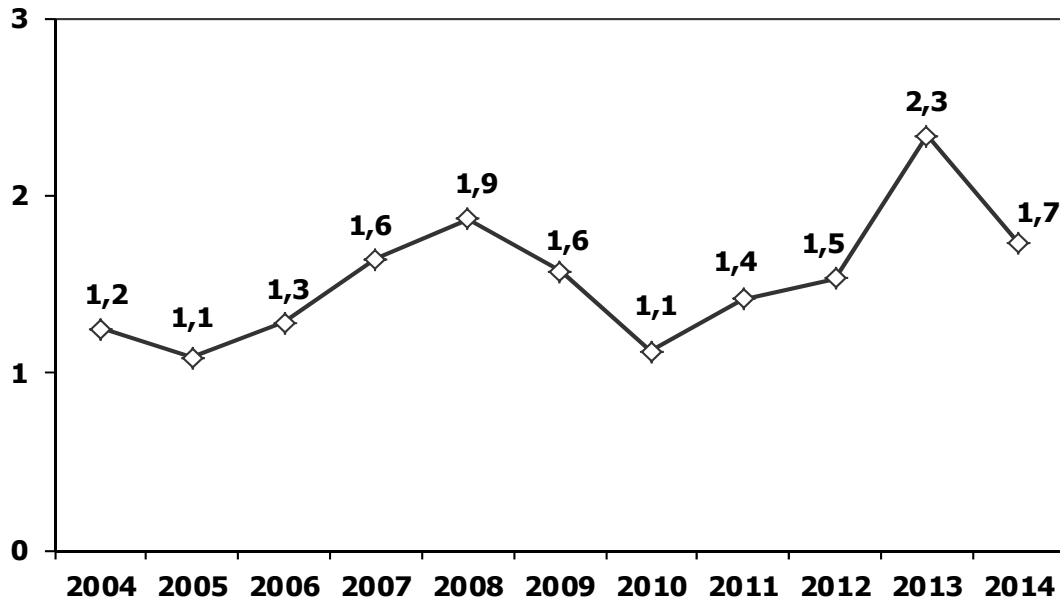
**Ticari Araç Üretimi** (x1000) (Ocak-Mart)  
Commercial Vehicle Production (x1000) (January- March)



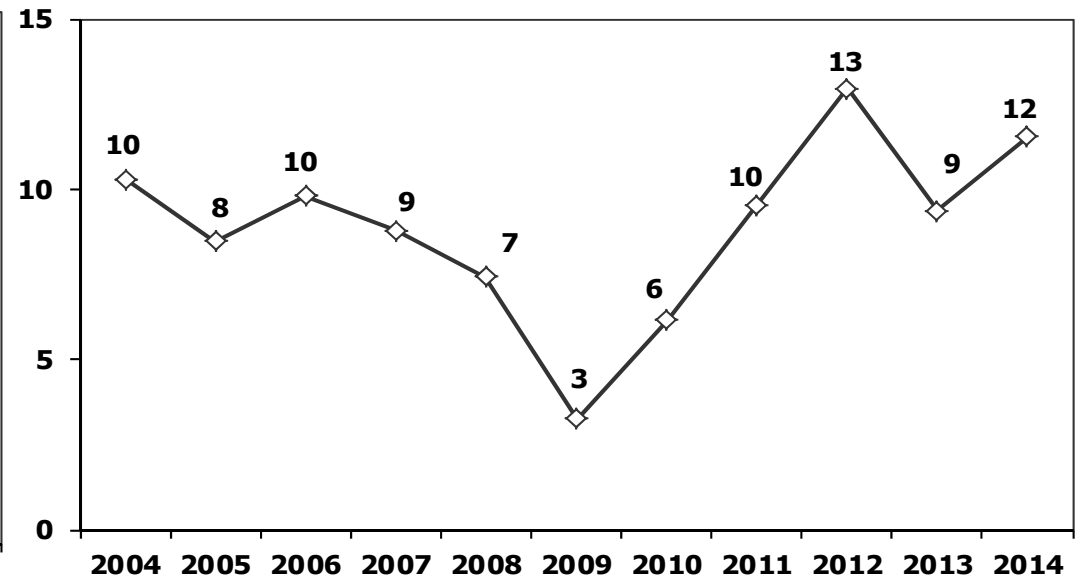
(AYA >12 Ton) **Büyük Kamyon Üretimi** (x1000) (Ocak-Mart)  
(GVW >12 Ton) Heavy Truck Production (x1000) (January- March)



**Otobüs Üretimi** (x1000) (Ocak-Mart)  
Bus Production (x1000) (January- March)

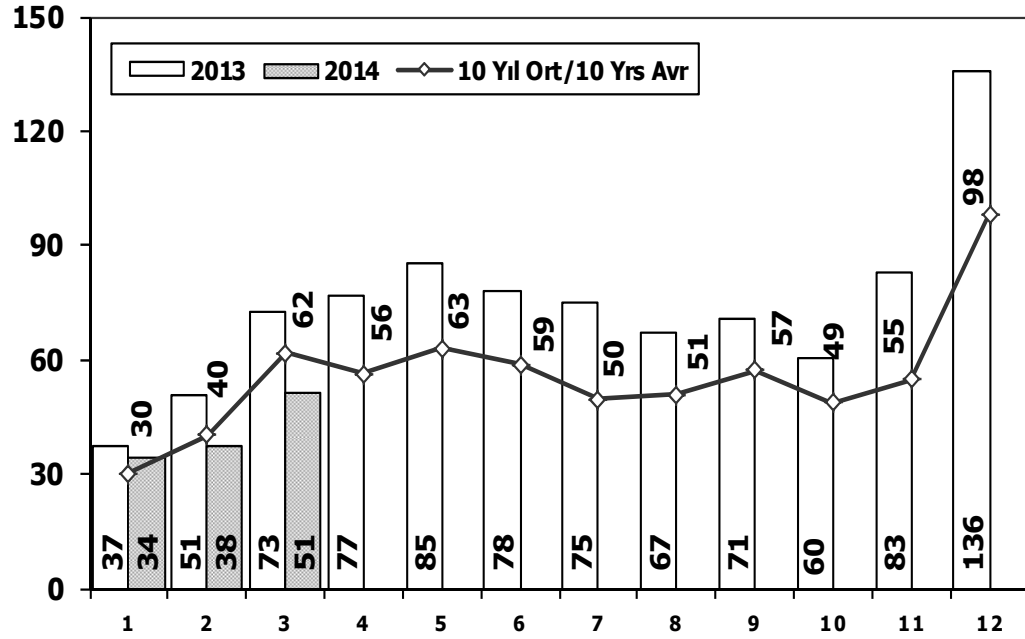


**Traktör Üretimi** (x1000) (Ocak-Mart)  
F. Tractor Production (x1000) (January- March)



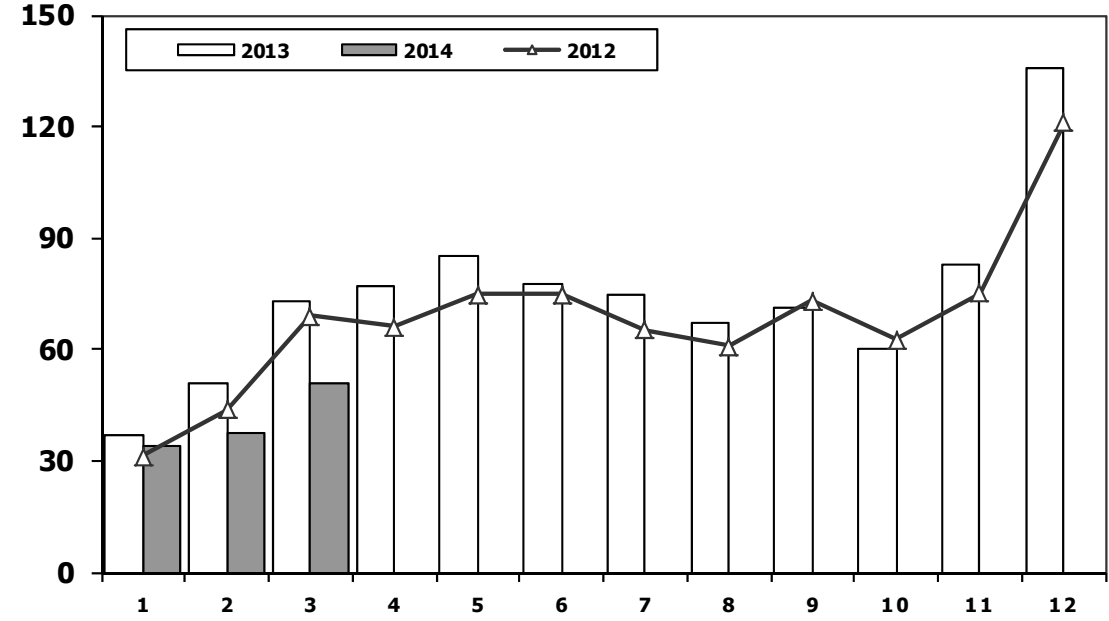
## Toplam Pazarın Analizi (x1000)

### Total Market Analysis (x1000)



## Toplam Pazar (x1000)

### Total Market (x1000)

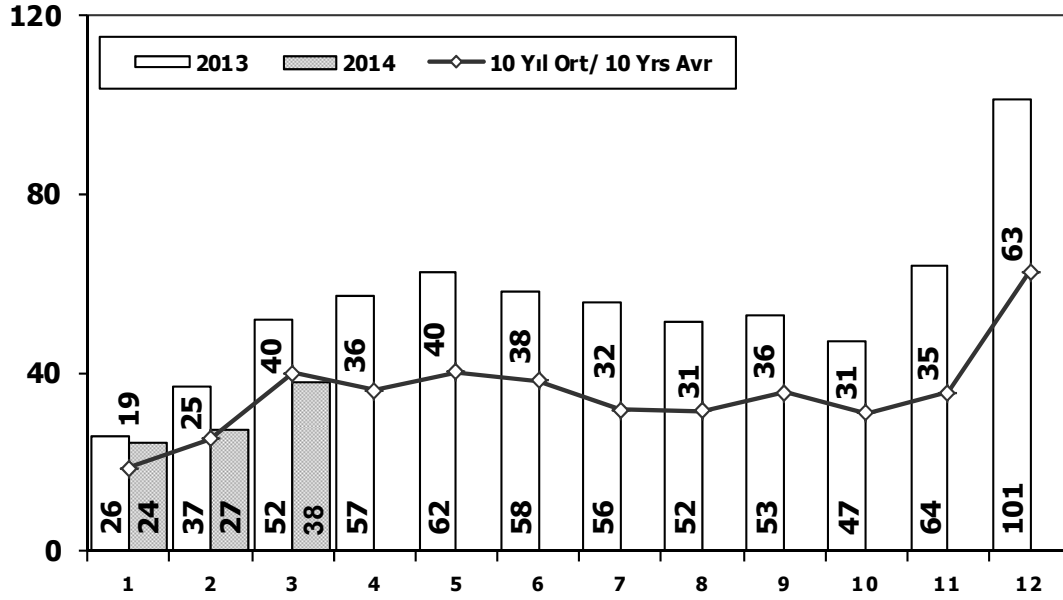


Aylar / Months	10 Yil Ort. 10 Yrs Avr. (x1000)	2014 (x1000)	%
1	30,3	34,3	13,0
2	40,3	37,5	-6,8
3	61,8	51,1	-17,4
<b>Total</b>	<b>132,4</b>	<b>122,9</b>	<b>-7,2</b>

	1	2	3	4	5	6	7	8	9	10	11	12	3 Ay/Mo	Total
2004	38.621	39.389	71.723	77.056	84.634	63.228	57.307	56.422	59.429	56.153	52.237	85.070	149.733	741.269
2005	22.687	38.291	64.502	60.873	71.383	64.379	63.847	68.647	66.580	60.791	65.719	110.838	125.480	758.537
2006	29.969	44.646	65.090	68.853	83.289	58.203	40.037	47.374	49.629	39.805	55.898	82.722	139.705	665.515
2007	24.950	31.702	45.488	45.633	51.255	51.661	50.117	54.171	50.078	56.058	67.017	106.076	102.140	634.206
2008	33.792	38.121	56.814	50.967	51.627	49.393	44.692	46.592	46.829	35.147	28.152	44.418	128.727	526.544
2009	20.631	22.846	56.531	54.426	64.887	63.102	30.246	37.092	83.403	22.117	29.202	91.386	100.008	575.869
2010	21.050	32.313	53.828	57.079	61.628	63.390	63.718	64.645	66.601	76.780	77.406	154.734	107.191	793.172
2011	47.658	62.348	<b>83.333</b>	82.071	85.093	85.863	65.364	61.378	63.643	72.640	67.195	134.281	<b>193.339</b>	<b>910.867</b>
2012	31.219	43.827	68.957	66.014	74.820	74.781	65.122	60.848	73.197	62.677	75.045	121.113	144.003	817.620
2013	37.140	50.931	72.688	77.015	85.421	77.771	74.726	67.383	71.037	60.399	83.017	135.596	160.759	893.124
2014	34.288	37.502	51.062	0	0	0	0	0	0	0	0	0	122.852	122.852

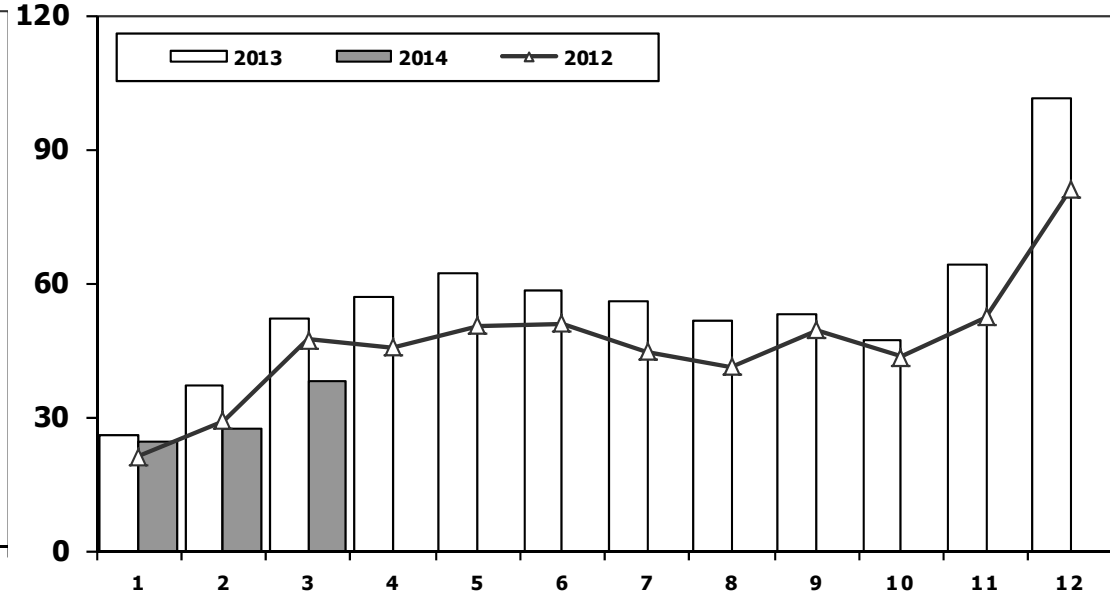
## Otomobil Pazarının Analizi (x1000)

### P.Cars Market Analysis (x1000)



## Otomobil Pazarı (x1000)

### P.Cars Market (x1000)

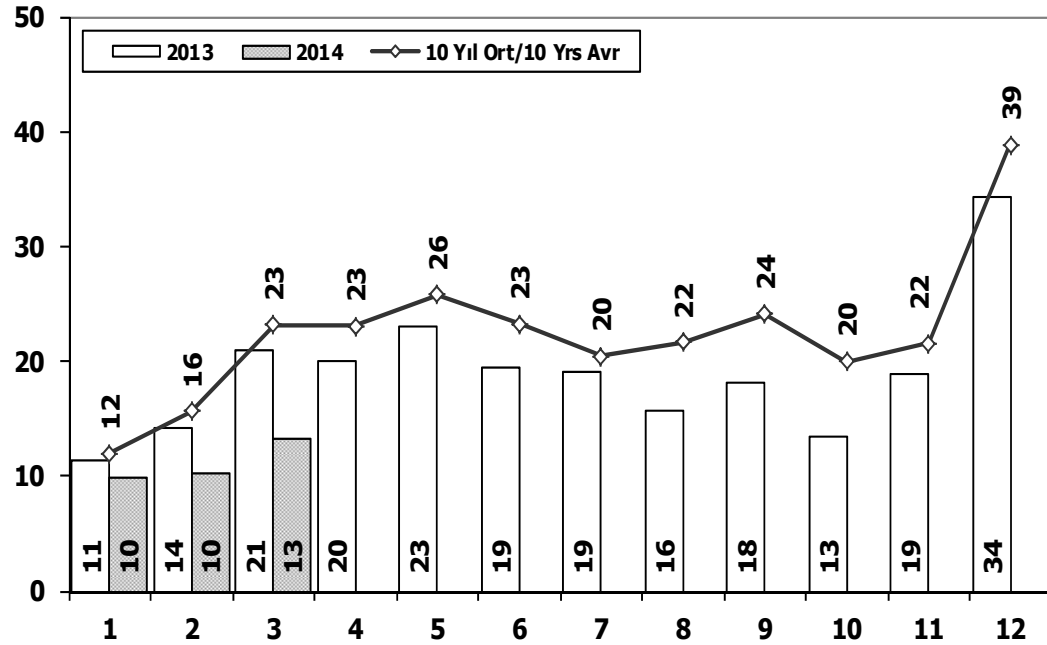


Aylar / Months	10 Yil Ort. 10 Yrs Avr. (x1000)	2014 (x1000)	%
1	18,7	24,4	30,5
2	25,2	27,2	7,9
3	39,9	37,8	-5,3
<b>Total</b>	<b>83,8</b>	<b>89,3</b>	<b>6,7</b>

	1	2	3	4	5	6	7	8	9	10	11	12	3 Ay/Mo	Total
2004	25.625	23.695	46.075	47.995	54.610	37.671	33.410	33.709	33.383	34.292	30.547	50.197	95.395	451.209
2005	11.595	21.012	38.129	36.206	38.480	40.900	38.969	38.648	36.410	34.960	37.841	65.447	70.736	438.597
2006	16.506	24.929	36.996	40.177	48.521	32.982	22.653	24.873	27.517	21.237	30.477	46.351	78.431	373.219
2007	13.186	17.212	24.336	25.204	29.067	30.126	28.246	28.469	27.662	32.569	39.643	61.745	54.734	357.465
2008	18.588	21.196	34.147	30.313	31.477	28.724	25.530	26.102	27.053	19.788	17.201	25.879	73.931	305.998
2009	13.173	14.492	40.622	36.202	44.188	41.019	16.637	22.537	52.162	13.828	17.781	57.178	68.287	369.819
2010	12.594	20.651	33.958	36.549	40.467	42.086	41.399	42.222	42.477	47.859	50.061	99.461	67.203	509.784
2011	29.868	39.004	<b>54.023</b>	53.835	56.302	56.714	43.518	38.875	39.964	47.508	44.951	88.957	<b>122.895</b>	593.519
2012	21.077	29.189	47.270	45.645	50.460	50.849	44.531	41.236	49.360	43.440	52.297	80.926	97.536	556.280
2013	25.835	36.814	51.785	56.999	62.383	58.290	55.712	51.611	52.925	46.985	64.117	101.199	114.434	<b>664.655</b>
2014	24.368	27.167	37.812	0	0	0	0	0	0	0	0	0	89.347	89.347

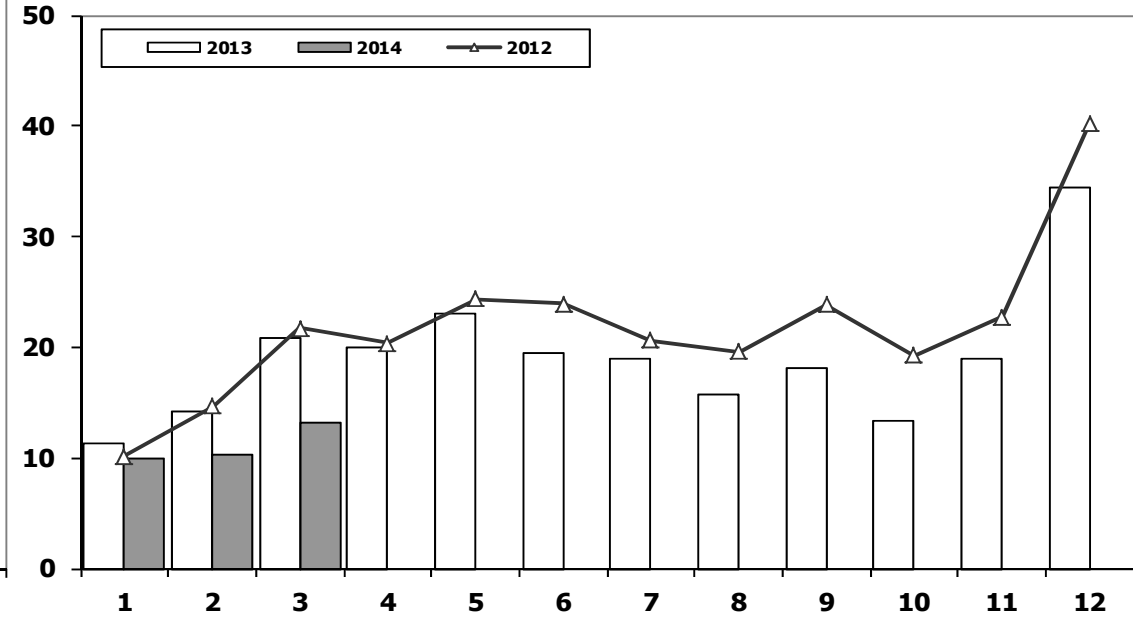
## Ticari Araç Pazarının Analizi (x1000)

### CV Market Analysis (x1000)



## Ticari Araç Pazarı (x1000)

### CV Total Market (Local + Imports) (x1000)



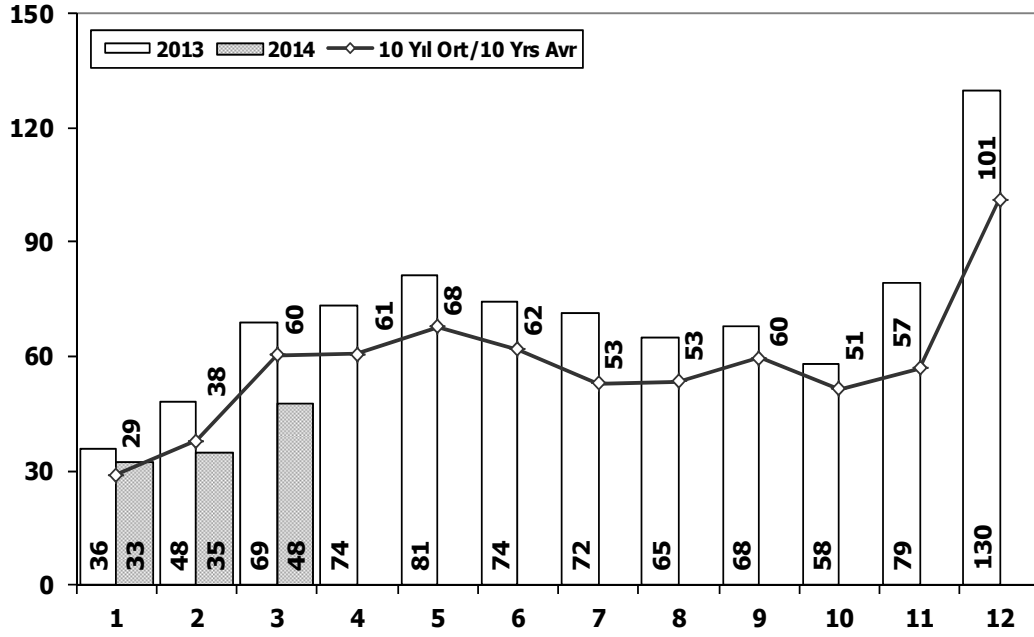
Aylar / Months	10 Yil Ort. 10 Yrs Avr. (x1000)	2014 (x1000)	%
1	11,7	9,9	-14,9
2	15,1	10,3	-31,5
3	21,9	13,3	-39,6
<b>Total</b>	<b>48,7</b>	<b>33,5</b>	<b>-31,2</b>

	1	2	3	4	5	6	7	8	9	10	11	12	3 Ay/Mo	Total
2004	12.996	15.694	25.648	29.061	30.024	25.557	23.897	22.713	26.046	21.861	21.690	34.873	54.338	290.060
2005	11.092	17.279	26.373	24.667	32.903	23.479	24.878	29.999	30.170	25.831	27.878	45.391	54.744	319.940
2006	13.463	19.717	28.094	28.676	34.768	25.221	17.384	22.501	22.112	18.568	25.421	36.371	61.274	292.296
2007	11.764	14.490	21.152	20.429	22.188	21.535	21.871	25.702	22.416	23.489	27.374	44.331	47.406	276.741
2008	15.204	16.925	22.667	20.654	20.150	20.669	19.162	20.490	19.776	15.359	10.951	18.539	54.796	220.546
2009	7.458	8.354	15.909	18.224	20.699	22.083	13.609	14.555	31.241	8.289	11.421	34.208	31.721	206.050
2010	8.456	11.662	19.870	20.530	21.161	21.304	22.319	22.423	24.124	28.921	27.345	55.273	39.988	283.388
2011	17.790	23.344	29.310	28.236	28.791	29.149	21.846	22.503	23.679	25.132	22.244	45.324	70.444	317.348
2012	10.142	14.638	21.687	20.369	24.360	23.932	20.591	19.612	23.837	19.237	22.748	40.187	46.467	261.340
2013	11.305	14.117	20.903	20.016	23.038	19.481	19.014	15.772	18.112	13.414	18.900	34.397	46.325	228.469
2014	9.920	10.335	13.250	0	0	0	0	0	0	0	0	0	33.505	33.505



## Hafif Araç Pazarının Analizi (x1000)

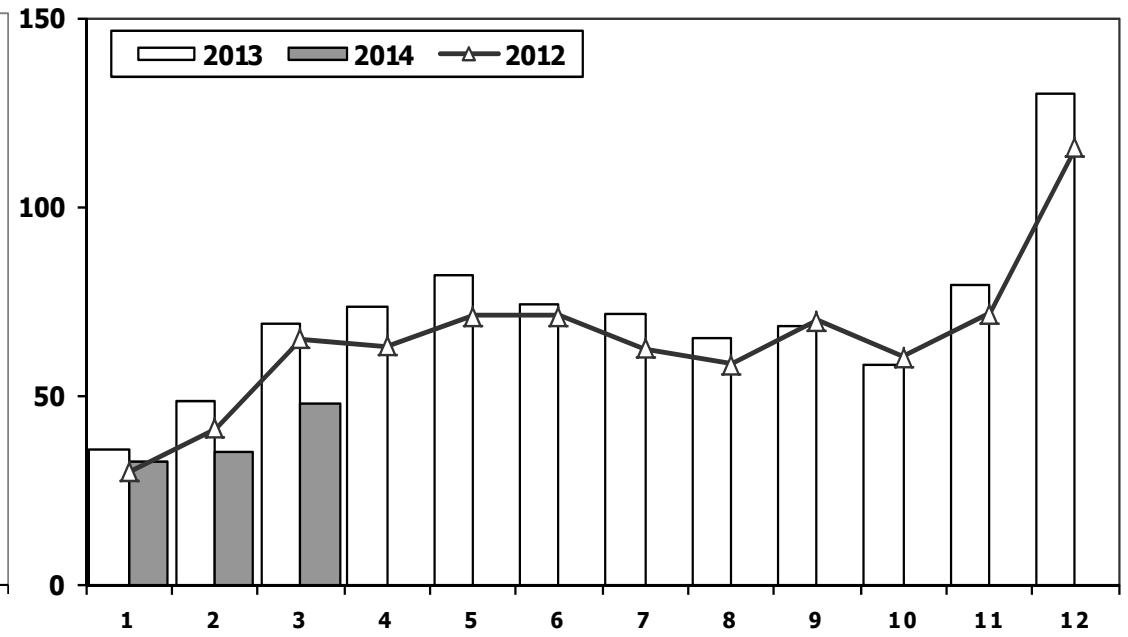
### LV Market Analysis (x1000)



Aylar / Months	10 Yil Ort. 10 Yrs Avr. (x1000)	2014 (x1000)	%
1	28,6	32,7	14,4
2	37,7	35,0	-7,2
3	58,3	47,6	-18,4
<b>Total</b>	<b>124,6</b>	<b>115,3</b>	<b>-7,5</b>

## Hafif Araç Pazarı (x1000)

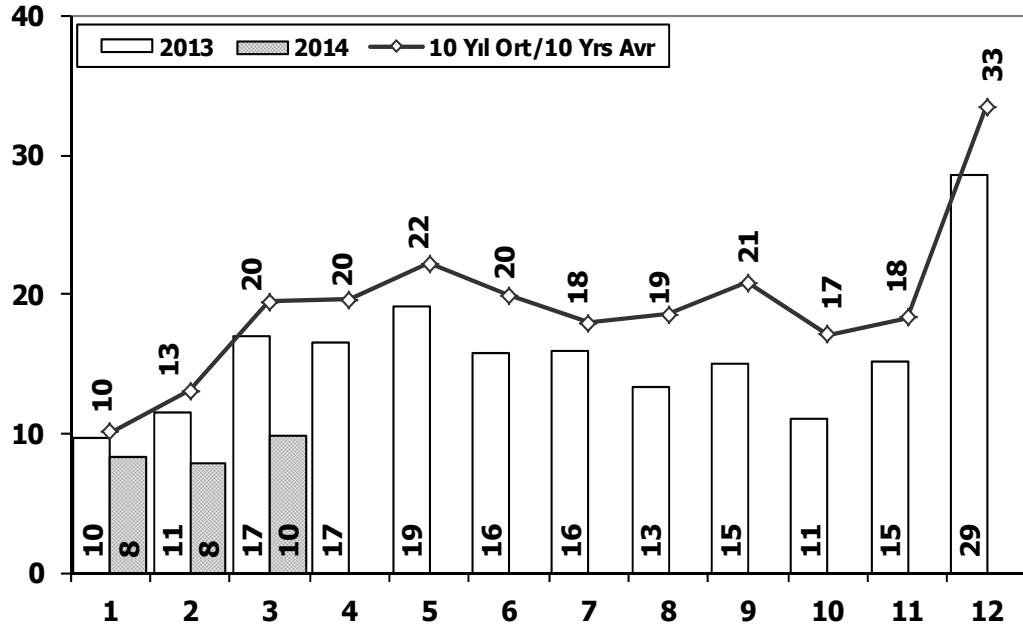
### LV Total Market (Local + Imports) (x1000)



	1	2	3	4	5	6	7	8	9	10	11	12	3 Ay/Mo	Total
2004	36.352	37.079	67.144	73.075	80.290	59.730	54.816	52.876	55.609	53.000	49.200	78.924	140.575	698.095
2005	20.747	35.766	60.707	56.844	67.357	60.796	61.015	64.011	61.954	56.638	61.364	103.209	117.220	710.408
2006	27.917	40.938	60.052	64.038	78.229	54.355	37.251	43.767	46.109	36.542	51.867	76.787	128.907	617.852
2007	23.117	29.184	41.890	42.366	47.938	48.674	47.490	50.558	46.581	52.725	63.313	100.926	94.191	594.762
2008	31.527	35.251	53.649	47.701	48.598	46.324	42.156	43.670	43.932	32.884	26.253	42.078	120.427	494.023
2009	19.606	21.742	55.111	52.640	63.191	61.067	28.845	35.609	81.397	21.033	27.962	88.923	96.459	557.126
2010	20.095	31.172	51.769	54.946	59.377	60.896	61.345	61.764	63.814	73.404	73.962	148.369	103.036	760.913
2011	44.892	58.663	<b>78.403</b>	77.695	80.646	81.573	63.044	58.406	60.129	69.421	63.657	127.910	<b>181.958</b>	<b>864.439</b>
2012	29.545	41.324	64.884	62.949	70.863	71.067	62.304	58.148	69.629	59.938	71.710	115.400	135.753	777.761
2013	35.523	48.307	68.774	73.575	81.468	74.096	71.596	65.043	67.963	58.014	79.301	129.718	152.604	853.378
2014	32.670	35.021	47.581	0	0	0	0	0	0	0	0	0	115.272	115.272

## Hafif Ticari Araç Pazarının Analizi (x1000)

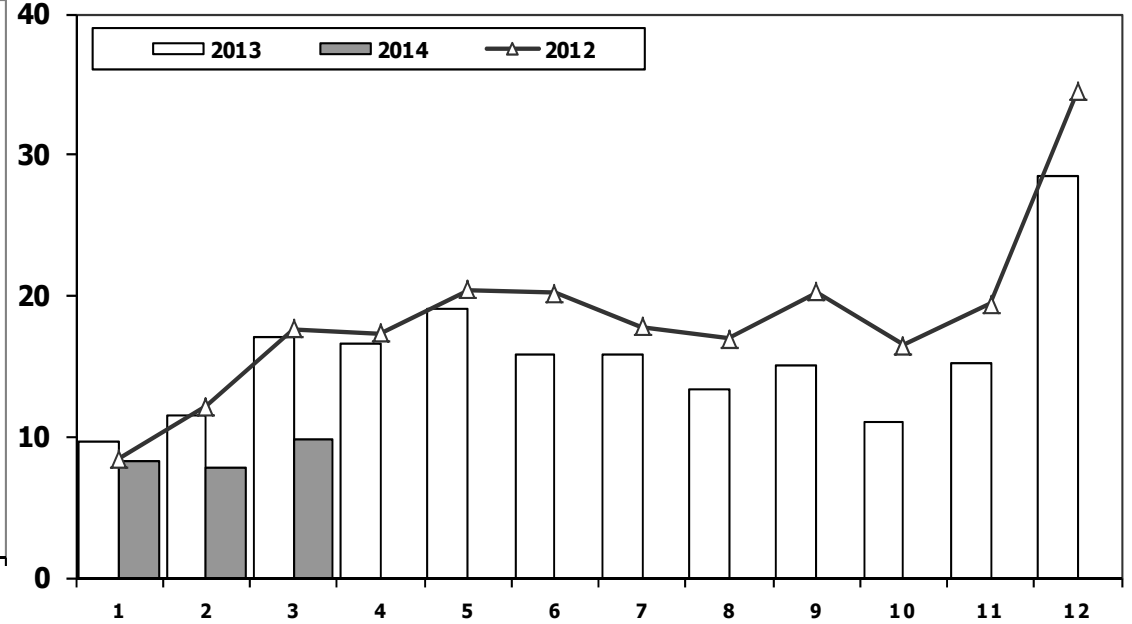
### LCV Market Analysis (x1000)



Aylar / Months	10 Yil Ort. 10 Yrs Avr. (x1000)	2013 (x1000)	%
1	9,9	8,3	-16,0
2	12,6	7,9	-37,5
3	18,4	9,8	-46,8
<b>Total</b>	<b>40,8</b>	<b>25,9</b>	<b>-36,5</b>

## Hafif Ticari Araç Pazarı (x1000)

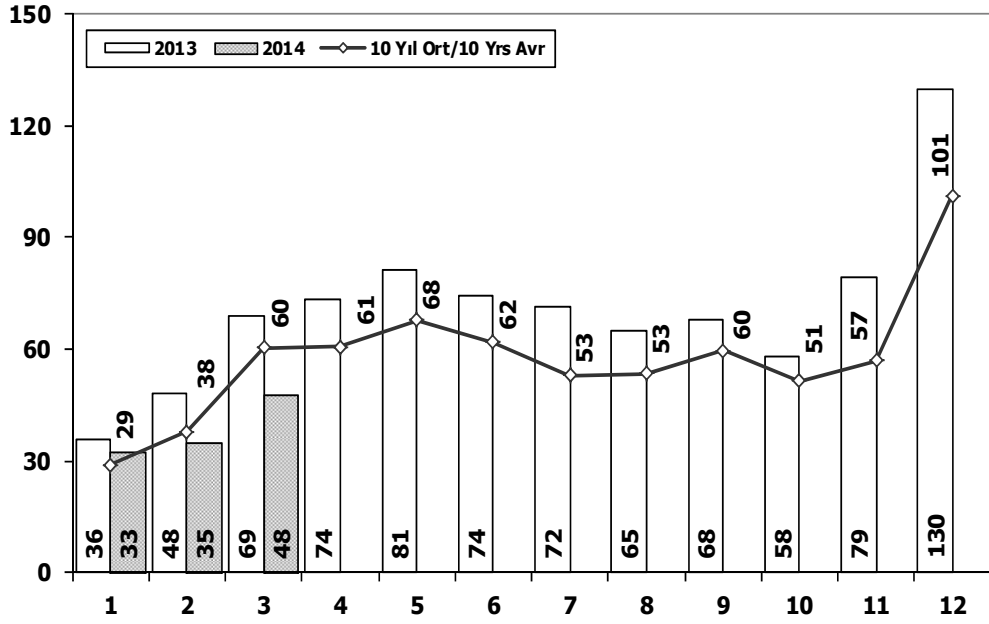
### LCV Total Market (Local + Imports) (x1000)



	1	2	3	4	5	6	7	8	9	10	11	12	3 Ay/Mo	Total
2004	10.727	13.384	21.069	25.080	25.680	22.059	21.406	19.167	22.226	18.708	18.653	28.727	45.180	246.886
2005	9.152	14.754	22.578	20.638	28.877	19.896	22.046	25.363	25.544	21.678	23.523	37.762	46.484	271.811
2006	11.411	16.009	23.056	23.861	29.708	21.373	14.598	18.894	18.592	15.305	21.390	30.436	50.476	244.633
2007	9.931	11.972	17.554	17.162	18.871	18.548	19.244	22.089	18.919	20.156	23.670	39.181	39.457	237.297
2008	12.939	14.055	19.502	17.388	17.121	17.600	16.626	17.568	16.879	13.096	9.052	16.199	46.496	188.025
2009	6.433	7.250	14.489	16.438	19.003	20.048	12.208	13.072	29.235	7.205	10.181	31.745	28.172	187.307
2010	7.501	10.521	17.811	18.397	18.910	18.810	19.946	19.542	21.337	25.545	23.901	48.908	35.833	251.129
2011	15.024	19.659	24.380	23.860	24.344	24.859	19.526	19.531	20.165	21.913	18.706	38.953	59.063	270.920
2012	8.468	12.135	17.614	17.304	20.403	20.218	17.773	16.912	20.269	16.498	19.413	34.474	38.217	221.481
2013	9.688	11.493	16.989	16.576	19.085	15.806	15.884	13.432	15.038	11.029	15.184	28.519	38.170	188.723
2014	8.302	7.854	9.769	0	0	0	0	0	0	0	0	0	25.925	25.925

## Hafif Arac Pazarı (AYA < 3.5 Ton)

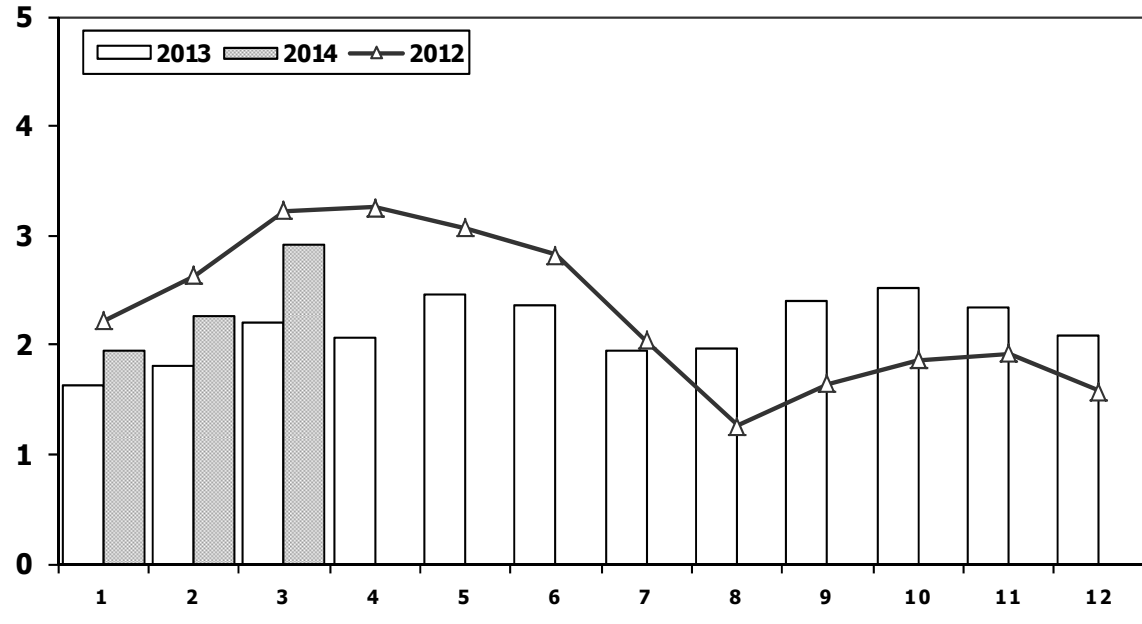
### Light Vehicle Market (GVW < 3.5 Ton)



	2004	2005	2006	2007	2008	2009	2010	2011	2012	2013	2014
Otomobil/P.Cars	451.209	438.597	373.219	357.465	305.998	369.819	509.784	593.519	556.280	<b>664.655</b>	89.347
HTA/LCV	246.886	<b>271.811</b>	244.633	237.297	188.025	187.307	251.129	270.920	221.481	188.723	25.925
<b>TOTAL</b>	698.095	710.408	617.852	594.762	494.023	557.126	760.913	<b>864.439</b>	777.761	853.378	115.272
HTA/LCV (%)	35	38	40	<b>40</b>	38	34	33	31	28	22	22

## Traktör Pazarı (x1000)

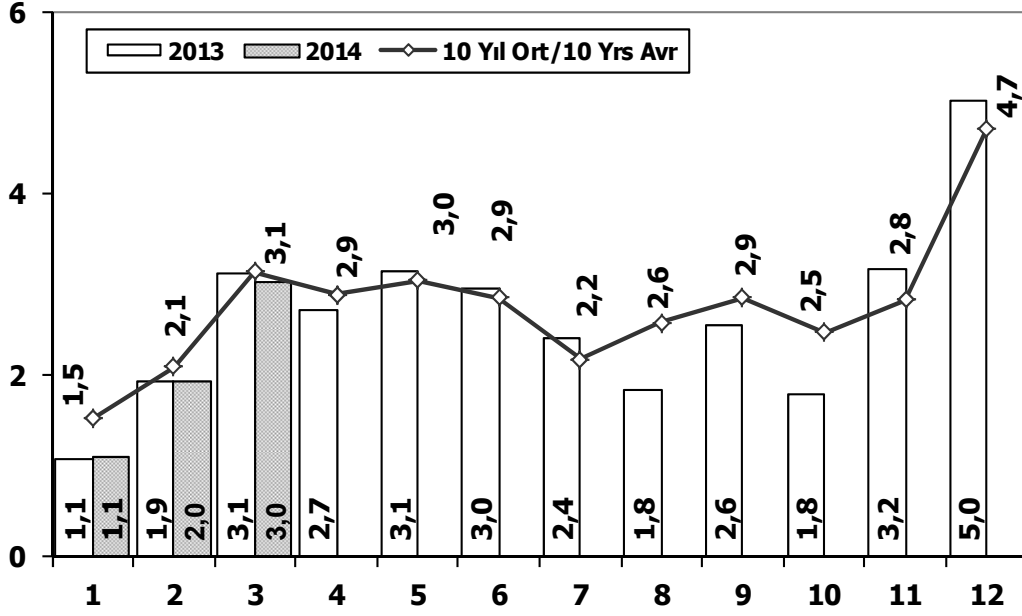
### F.Tractor Market (x1000)



	1	2	3	4	5	6	7	8	9	10	11	12	3 Ay/Mo	Total
<b>2004</b>	1.946	1.874	2.909	3.260	2.863	2.816	1.988	2.209	2.509	1.989	2.198	1.364	6.729	27.925
<b>2005</b>	1.026	1.636	2.001	2.599	2.569	2.780	2.148	2.819	2.567	2.477	2.297	2.089	4.663	27.008
<b>2006</b>	1.578	2.493	2.746	2.841	3.561	2.356	1.685	2.177	2.756	1.915	2.353	1.925	6.817	28.386
<b>2007</b>	1.812	1.778	2.063	2.107	2.266	1.853	1.653	2.065	2.372	2.239	2.231	1.602	5.653	24.041
<b>2008</b>	1.510	1.427	1.933	1.692	1.689	1.592	1.275	924	904	609	707	359	4.870	14.621
<b>2009</b>	267	344	388	638	759	828	741	534	586	765	725	715	999	7.290
<b>2010</b>	714	903	1.432	1.653	1.736	1.673	1.613	1.527	2.351	2.787	2.656	2.345	3.049	21.390
<b>2011</b>	2.458	2.610	3.105	3.403	3.847	3.599	2.952	1.559	2.957	2.823	2.603	2.807	<b>8.173</b>	<b>34.723</b>
<b>2012</b>	2.216	2.632	<b>3.223</b>	3.259	3.067	2.821	2.037	1.262	1.648	1.858	1.921	1.579	8.071	27.523
<b>2013</b>	1.633	1.817	2.196	2.070	2.455	2.370	1.955	1.969	2.396	2.510	2.343	2.080	5.646	25.794
<b>2014</b>	1.941	2.256	2.915	0	0	0	0	0	0	0	0	0	7.112	7.112

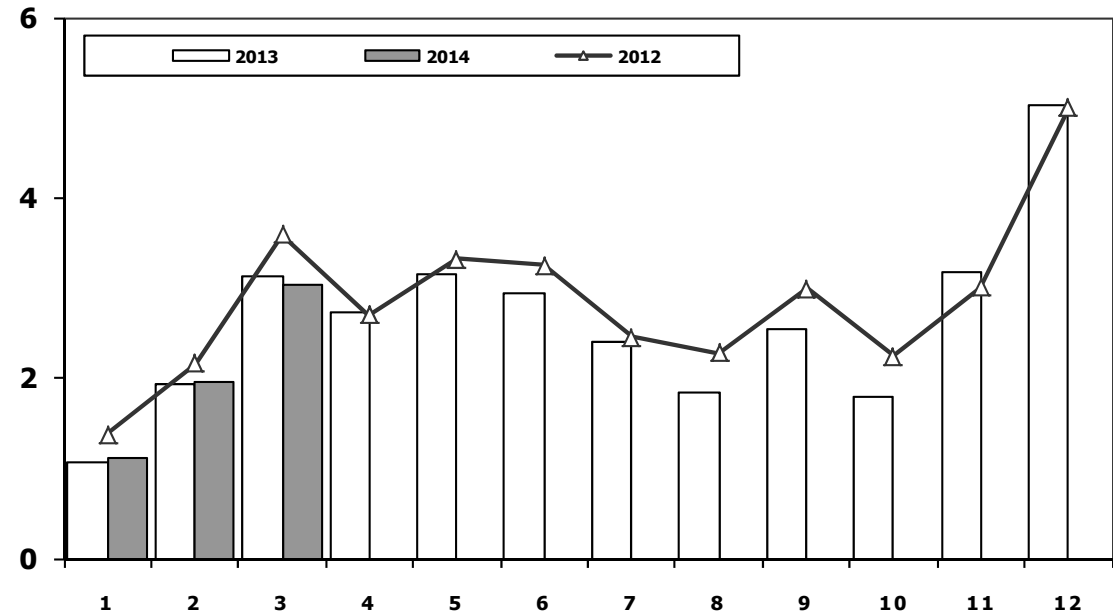
## Kamyon Pazarının Analizi (x1000) AYA > 5 Ton

### Truck Market Analysis (x1000) GVW > 5 Ton



## Kamyon Pazarı (x1000) AYA > 5 Ton

### Truck Market (x1000) GVW > 5 Ton

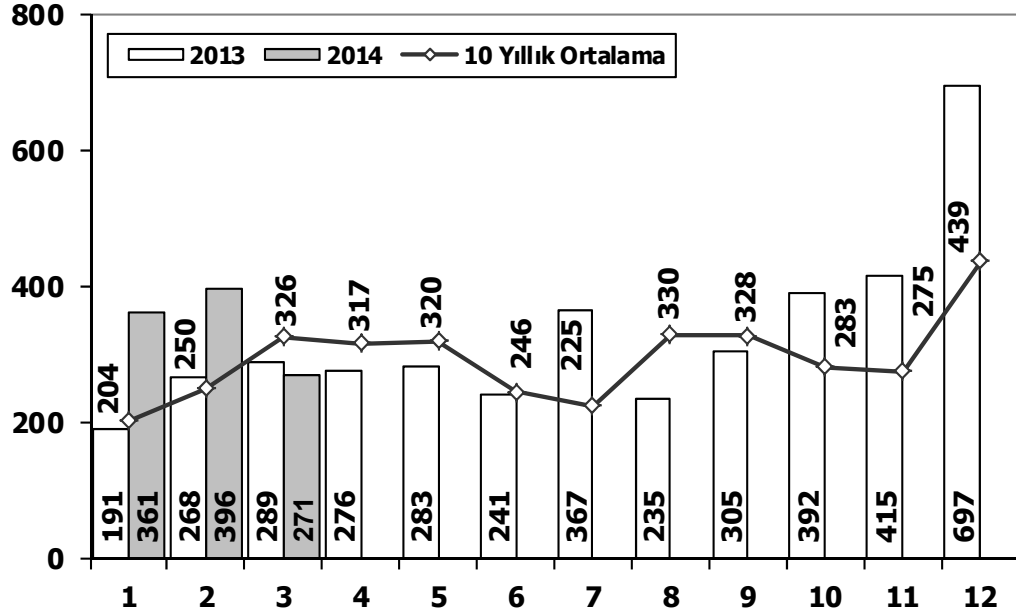


Aylar / Months	10 Yil Ort. 10 Yrs Avr. (x1000)	2014 (x100)	%
1	1,4	1,1	-23,0
2	2,1	2,0	-6,7
3	3,0	3,0	-0,4
<b>Total</b>	<b>6,6</b>	<b>6,1</b>	<b>-7,4</b>

	1	2	3	4	5	6	7	8	9	10	11	12	3 Ay/Mo	Total
2004	1.863	1.949	3.983	3.352	3.651	3.118	2.234	2.897	3.285	2.727	2.629	5.517	7.795	37.205
2005	1.693	2.186	3.288	3.484	3.413	3.147	2.504	4.028	4.043	3.708	3.918	6.570	7.167	41.982
2006	1.767	3.310	<b>4.467</b>	4.180	4.449	3.398	2.472	3.142	3.052	2.926	3.550	5.358	9.544	<b>42.071</b>
2007	1.554	2.055	3.065	2.940	2.865	2.613	2.372	3.145	2.988	2.886	3.258	4.444	6.674	34.185
2008	1.797	2.309	2.621	2.578	2.459	2.526	2.067	2.377	2.390	1.790	1.512	1.834	6.727	26.260
2009	771	759	1.034	1.342	1.355	1.651	1.156	1.205	1.780	866	981	2.015	2.564	14.915
2010	777	968	1.772	1.807	1.966	2.205	2.093	2.446	2.444	3.071	3.136	5.677	3.517	28.362
2011	2.552	3.292	4.418	3.754	3.803	3.749	1.996	2.478	3.081	2.774	3.108	5.787	<b>10.262</b>	40.792
2012	1.375	2.159	3.595	2.697	3.321	3.250	2.450	2.277	2.991	2.244	3.006	5.000	7.129	34.365
2013	1.077	1.931	3.127	2.720	3.145	2.951	2.411	1.845	2.554	1.801	3.173	5.025	6.135	31.760
2014	1.115	1.951	3.030	0	0	0	0	0	0	0	0	0	6.096	6.096

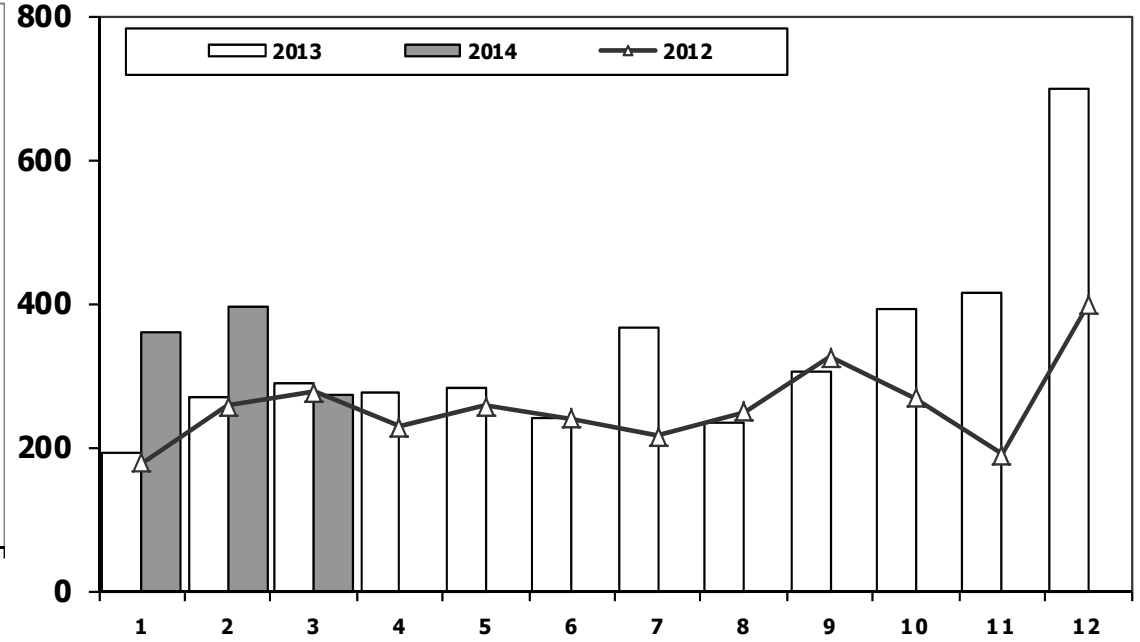
## Midibüs Pazarının Analizi (7-9 mt / 25-35 Kişilik)

Midibus Market Analysis (7-9 mt / 25-35 Passengers)



## Midibüs Pazarı (7-9 mt / 25-35 Kişilik Midibüs)

Midibus Market (7-9 mt / 25-35 Passengers)



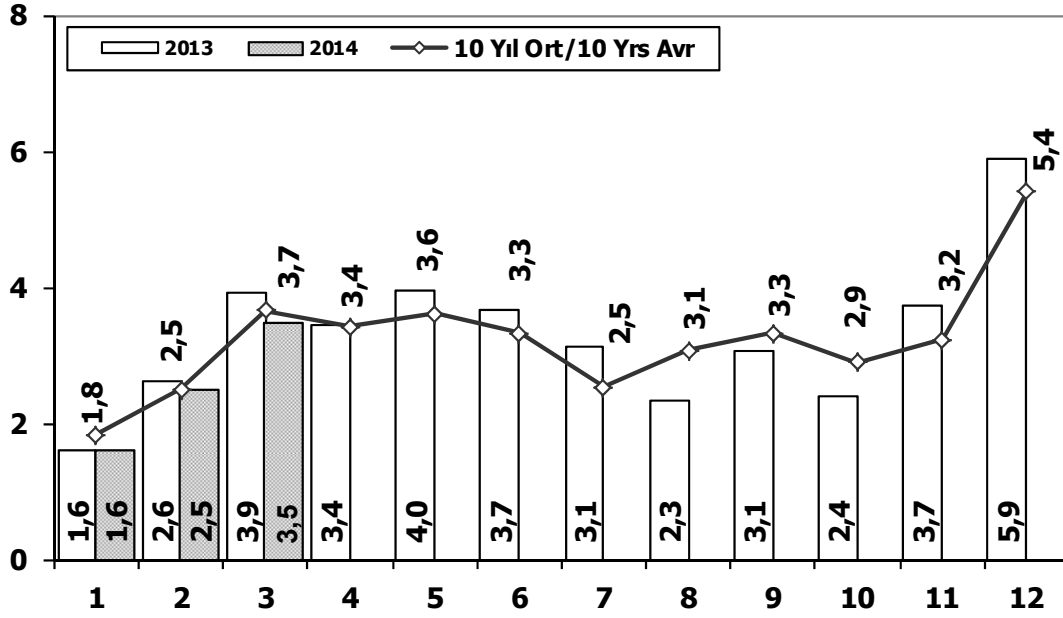
Aylar / Months	10 Yıl Ort. 10 Yrs Avr.	2014	%
1	204	361	77
2	250	396	58
3	326	271	-17
<b>Total</b>	<b>781</b>	<b>1.028</b>	<b>32</b>

	1	2	3	4	5	6	7	8	9	10	11	12	3 Ay/Mo	Total
2004	233	226	381	431	524	237	154	531	445	331	319	551	840	4.363
2005	182	258	432	393	439	269	252	459	436	329	328	574	872	4.351
2006	207	297	406	388	381	266	230	353	322	253	305	401	910	3.809
2007	207	272	404	238	302	283	164	365	399	279	283	465	883	3.661
2008	391	476	436	512	419	331	368	380	341	352	246	270	1.303	4.522
2009	154	124	160	220	174	198	160	175	168	143	206	323	438	2.205
2010	155	131	185	167	140	138	129	246	236	206	202	437	471	2.372
2011	138	195	294	316	280	258	211	305	301	276	260	270	627	3.104
2012	179	257	277	229	257	239	216	249	325	269	189	398	713	3.084
2013	191	268	289	276	283	241	367	235	305	392	415	697	748	3.959
2014	361	396	271	0	0	0	0	0	0	0	0	0	1.028	1.028



## Ağır Ticari Araç Pazarının Analizi (x1000)

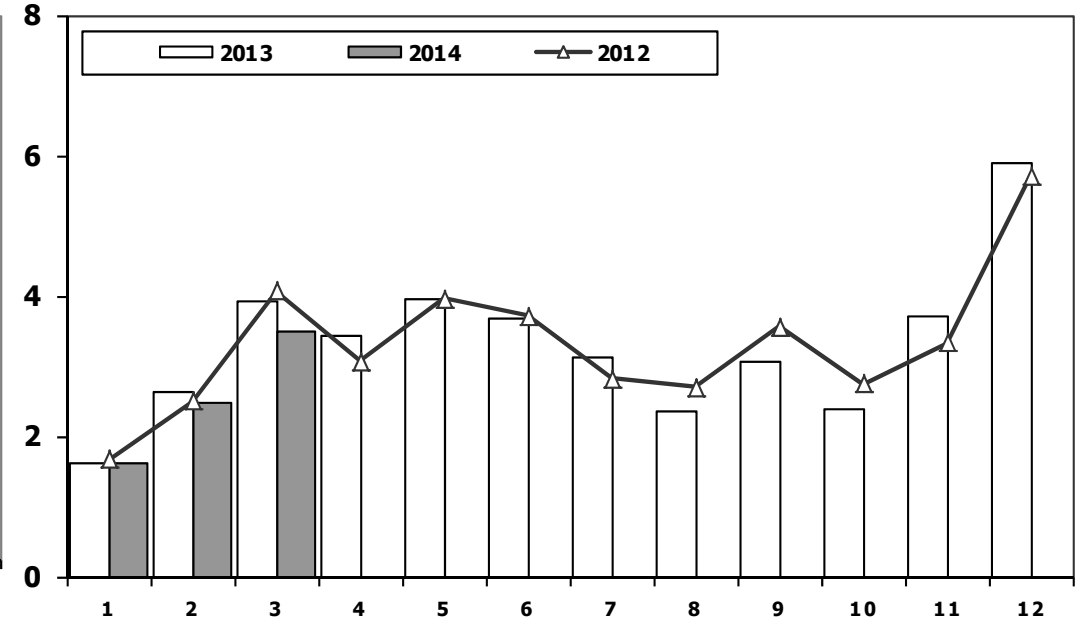
### HCV Market Analysis (x1000)



Aylar / Months	10 Yil Ort. 10 Yrs Avr. (x1000)	2013 (x1000)	%
1	1,8	1,6	-8,8
2	2,5	2,5	-1,4
3	3,5	3,5	-1,9
<b>Total</b>	<b>7,8</b>	<b>7,6</b>	<b>-3,3</b>

## Ağır Ticari Araç Pazarı (x1000)

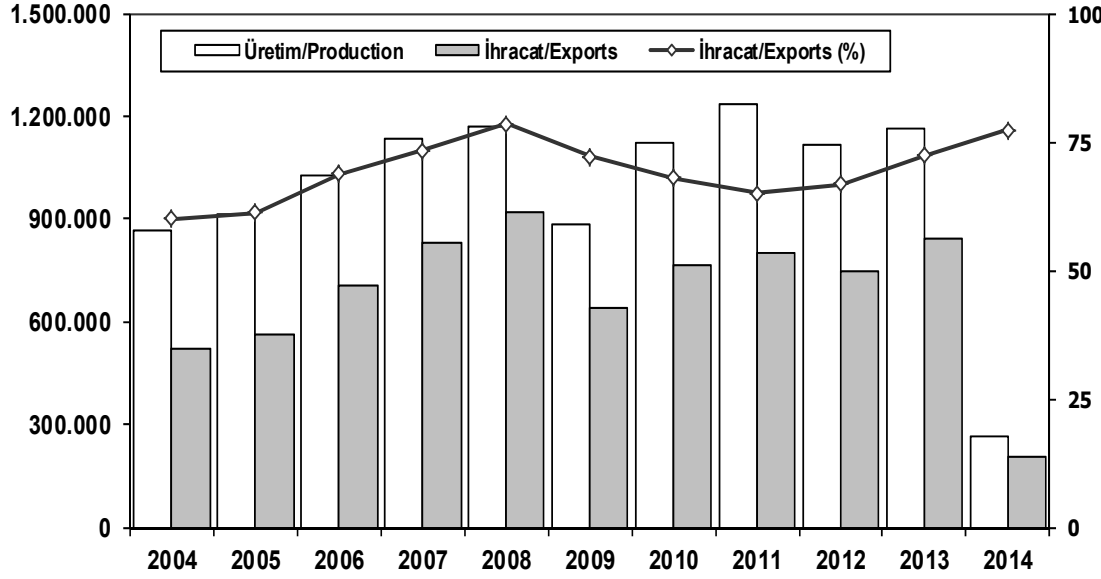
### HCV Market (x1000)



	1	2	3	4	5	6	7	8	9	10	11	12	3 Ay/Mo	Total
2004	2.269	2.310	4.579	3.981	4.344	3.498	2.491	3.546	3.820	3.153	3.037	6.146	9.158	43.174
2005	1.940	2.525	3.795	4.029	4.026	3.583	2.832	4.636	4.626	4.153	4.355	7.629	8.260	48.129
2006	2.052	3.708	5.038	4.815	5.060	3.848	2.786	3.607	3.520	3.263	4.031	5.935	10.798	47.663
2007	1.833	2.518	3.598	3.267	3.317	2.987	2.627	3.613	3.497	3.333	3.704	5.150	7.949	39.444
2008	2.265	2.870	3.165	3.266	3.029	3.069	2.536	2.922	2.897	2.263	1.899	2.340	8.300	32.521
2009	1.025	1.104	1.420	1.786	1.696	2.035	1.401	1.483	2.006	1.084	1.240	2.463	3.549	18.743
2010	955	1.141	2.059	2.133	2.251	2.494	2.373	2.881	2.787	3.376	3.444	6.365	4.155	32.259
2011	2.766	3.685	4.930	4.376	4.447	4.290	2.320	2.972	3.514	3.219	3.538	6.371	11.381	46.428
2012	1.674	2.503	4.073	3.065	3.957	3.714	2.818	2.700	3.568	2.739	3.335	5.713	8.250	39.859
2013	1.617	2.624	3.914	3.440	3.953	3.675	3.130	2.340	3.074	2.385	3.716	5.878	8.155	39.746
2014	1.618	2.481	3.481	0	0	0	0	0	0	0	0	0	7.580	7.580

## İhracat/Üretim (2004-2014)

### Exports/Production (2004-2014)



	2004	2005	2006	2007	2008	2009	2010	2011	2012	2013	2014
Üretim/Production	864.073	916.062	1.026.427	1.132.951	1.171.917	884.466	1.124.982	1.234.637	1.115.233	1.166.043	267.044
İhracat/Exports	518.595	561.078	706.402	829.879	920.763	637.855	763.670	801.112	745.354	843.467	206.566
İhracat/Exports (%)	60	61	69	73	79	72	68	65	67	72	77

## Taşıt Araçları İhracatı (2012-2014)

### Motor Vehicle Exports (2012-2014)

SEKTÖR/SECTOR	2012	2013	2013		2013/2012 (%)
			3 Ay-3 Mo		
OTOMOBİL/ P.Cars	412.991	484.504	110.744	136.408	23
TİCARİ ARAÇLAR / CV	316.932	343.967	94.629	66.627	-30
* Kamyonet/Pick-Up	292.601	300.765	84.409	59.783	-29
* Minibüs/Minibus	16.429	34.664	8.879	5.465	-38
* Kamyon/Truck	2.682	3.055	282	266	-6
* Midibüs/Midibus	1.173	985	294	200	-32
* Otobüs/Bus	4.047	4.498	765	913	19
TAŞIT ARAÇLARI /MV TOTAL	729.923	828.471	205.373	203.035	-1
TRAKTÖR/F.TRACTOR	15.431	14.996	3.455	3.531	2
TOTAL	745.354	843.467	208.828	206.566	-1

## Otomotiv Ana ve Yan Sanayii İhracatı (ABD \$)

### CBU and CKD Exports - \$

SEKTÖR/SECTOR	2011 Toplam (Total)	2012 Toplam (Total)	2013 Toplam (Total)	2013		2014/2013 (%)
				3 Ay (3 Months)		
<b>Toplam Yan Sanayi/Total Component Industry</b>	<b>6.595.662.583</b>	<b>8.307.826.870</b>	<b>8.223.513.061</b>	<b>2.192.731.923</b>	<b>2.482.697.622</b>	<b>13</b>
İç ve Dış Lastik / Tyres	988.990.821	1.373.205.546	1.200.828.712	296.773.569	329.139.127	11
Emniyet Camı / Safety Glasses	107.203.983	120.041.467	120.710.174	34.535.587	39.832.736	15
Motor (Engine)	305.490.804	273.896.369	272.085.582	81.059.405	47.615.907	-41
Akümülatör / Batteries	186.504.496	232.611.079	250.345.945	74.020.264	67.626.331	-9
Diğer Aksam ve Parça / Spare Parts and Components	5.007.472.478	6.308.072.409	6.379.542.648	1.706.343.099	1.998.483.522	17
<b>Toplam Ana Sanayi/Total Vehicle Industry</b>	<b>10.855.476.447</b>	<b>12.128.522.618</b>	<b>11.101.346.096</b>	<b>2.968.006.387</b>	<b>3.172.493.548</b>	<b>7</b>
Otobüs / Bus	744.935.284	929.372.870	856.072.335	178.133.901	206.062.511	16
Midibüs-Minibüs / Minibus- Minibus	120.378.674	145.199.034	161.806.275	32.924.294	7.349.267	-78
Otomobil (P. Cars)	6.217.404.551	6.541.969.418	6.067.964.588	1.664.282.787	1.807.483.688	9
Kamyon-Kamyonet/HCV-LCV	3.363.101.038	4.034.772.621	3.433.318.136	958.951.571	989.742.456	3
Çekici/Truck-Tractor	145.710.283	116.912.332	195.260.385	53.038.768	61.548.694	16
Römork ve Yarı Römork/Trailer-Semi Trailer	72.145.150	147.247.613	71.336.635	6.989.037	6.644.898	-5
Tarım Traktörü/Farm Tractor	191.801.467	213.048.730	315.587.742	73.686.030	93.662.033	27
<b>Toplam/Total</b>	<b>17.451.139.030</b>	<b>20.436.349.488</b>	<b>19.324.859.157</b>	<b>5.160.738.311</b>	<b>5.655.191.170</b>	<b>10</b>

Kaynak: Otomotiv Endüstrisi İhracatçıları Birliği



## Firma Bazında İhracat (Adet)

Export Of member Companies (Unit)

FİRMALAR Companies	2012	2013	Ocak-Mart 3 Months	
			2013	2014
OYAK RENAULT	227.162	266.508	69.005	61.926
HYUNDAI ASSAN	67.453	85.500	15.680	36.625
TOFAŞ	154.068	160.309	44.871	36.541
FORD OTOSAN	191.149	208.722	57.962	35.997
TOYOTA	63.549	86.908	12.905	30.544
TÜRK TRAKTÖR	14.572	14.402	3.387	3.313
M. BENZ TÜRK	4.054	5.331	609	606
MAN TÜRKİYE	885	898	253	232
HATTAT TARIM	859	594	68	218
A.I.O.S.	943	770	256	214
HONDA TÜRKİYE	7.959	2.121	668	210
TEMSA GLOBAL	856	663	122	103
OTOKAR	510	620	87	30
KARSAN	10.994	10.120	2.954	7
BMC	341	1	1	0
<b>GENEL TOPLAM</b>	<b>745.354</b>	<b>843.467</b>	<b>208.828</b>	<b>206.566</b>

Kaynak: OSD

## Sektör Bazında İhracat (\$)

Exports on Sectorial Basis

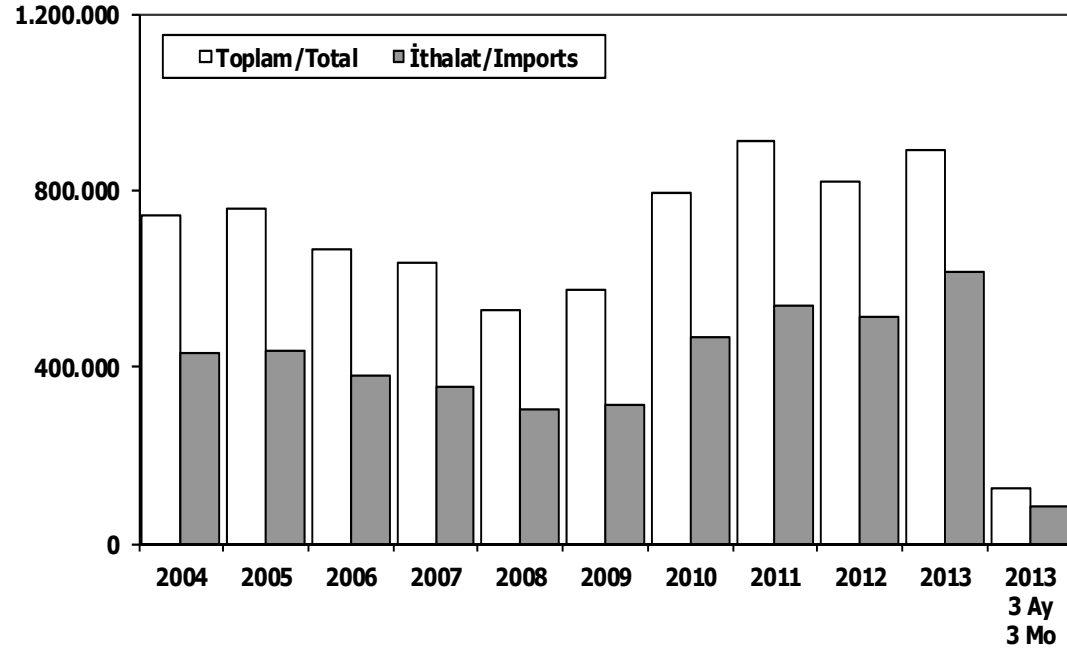
Sıra No	Sektörler	2013 Toplam	Ocak-Mart			2014 (%) Pay
			2013	2014	2014/2013 (%)	
1	<b>Otomotiv Endüstrisi *</b>	<b>18.973.440</b>	<b>5.125.244</b>	<b>5.145.770</b>	<b>0,4</b>	<b>14,1</b>
2	Hazırgiyim ve Konfeksiyon	16.267.440	4.006.309	4.331.086	8,1	11,9
3	Kimyevi Maddeler ve Mamülleri	17.555.144	4.332.240	4.226.715	-2,4	11,6
4	Çelik	15.503.698	3.911.818	3.869.972	-1,1	10,6
5	Tekstil ve Hammaddeleri	7.949.417	1.942.334	2.703.625	39,2	7,4
6	Elektrik-Elektronik ve Makina	11.826.129	2.898.009	2.590.508	-10,6	7,1
7	Demir ve Demir Dışı Metaller	6.399.263	1.555.920	1.637.179	5,2	4,5
8	Hububat, Bakliyat, Yağlı Tohumlar	5.539.424	1.492.200	1.512.631	1,4	4,1
9	Makine ve Aksamları	5.377.551	1.268.416	1.387.501	9,4	3,8
10	İhracatçı Birlikleri Kaydından Muaf İhracat	14.943.830	1.280.621	1.245.649	-2,7	3,4
11	Madencilik Ürünleri	4.305.807	834.457	1.170.131	40,2	3,2
12	Ağaç Mamülleri, Orman Ürünleri	3.909.753	890.572	987.458	10,9	2,7
13	İklimlendirme Sanayi	3.819.315	895.689	931.352	4,0	2,6
14	Çimento ve Toprak Ürünleri	3.129.921	723.267	760.289	5,1	2,1
15	Yaş Meyve ve Sebze	2.280.859	565.164	579.471	2,5	1,6
16	Mücevher	1.967.285	538.484	549.954	2,1	1,5
17	Hali	2.046.152	447.868	500.178	11,7	1,4
18	Deri ve Deri Mamülleri	1.630.840	447.868	500.178	11,7	1,4
19	Su Ürünleri ve Hayvansal Mamuller	1.450.656	405.073	467.693	15,5	1,3
20	Fındık ve Mamülleri	1.763.668	398.804	450.009	12,8	1,2
21	Kuru Meyve ve Mamülleri	1.377.545	308.521	331.437	7,4	0,9
22	Gemi ve Yat	1.287.620	242.901	304.103	25,2	0,8
23	Meyve Sebze Mamülleri	1.265.172	285.851	285.817	0,0	0,8
24	Savunma Sanayi	1.275.409	244.177	272.234	11,5	0,7
25	Tütün ve Mamülleri	819.942	279.417	261.579	-6,4	0,7
26	Zeytin ve Zeytinyağ	231.451	49.516	159.927	223,0	0,4
27	Diğer Sanayi Ürünleri	83.977	19.020	28.186	48,2	0,1
28	Süs Bitkileri	73.671	21.909	23.494	7,2	0,1
<b>TOPLAM</b>		<b>153.054.379</b>	<b>35.307.370</b>	<b>36.484.878</b>	<b>3,3</b>	<b>100,0</b>

Kaynak: TİM

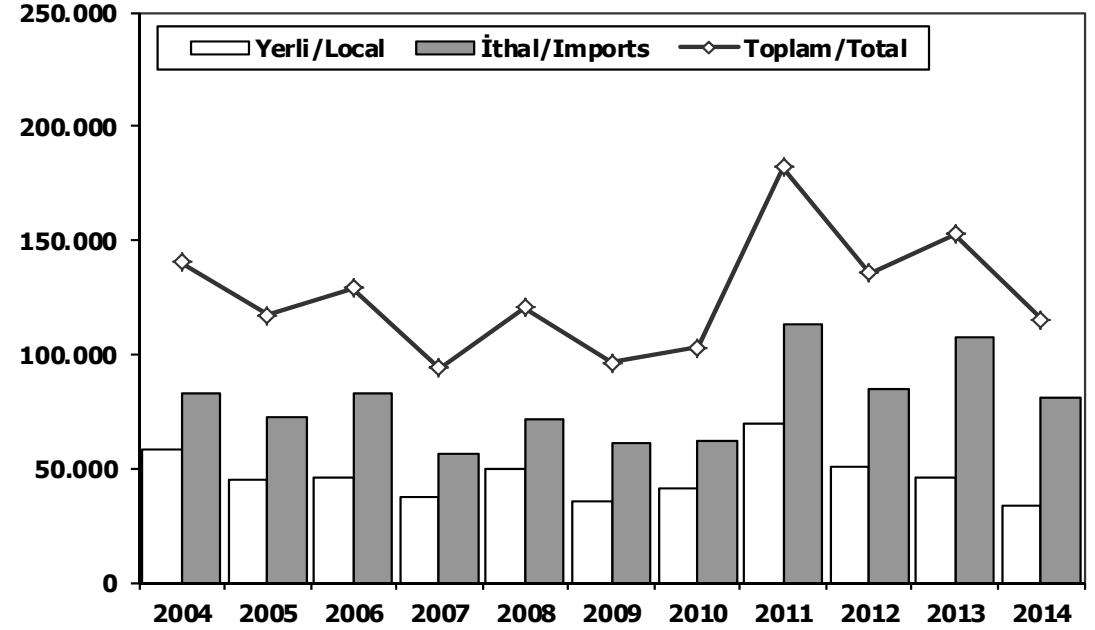
### **First 5 Sectors:**

- 1- Transport Vehicle and Component Industry
- 2- Ready Wear and Confection
- 3- Chemical Articles and Products
- 4- Iron Steel Products
- 5- Textile and Raw Materials

## Toplam Pazar (Otomobil+T.Araç) Total Market (P.Cars+C.V)



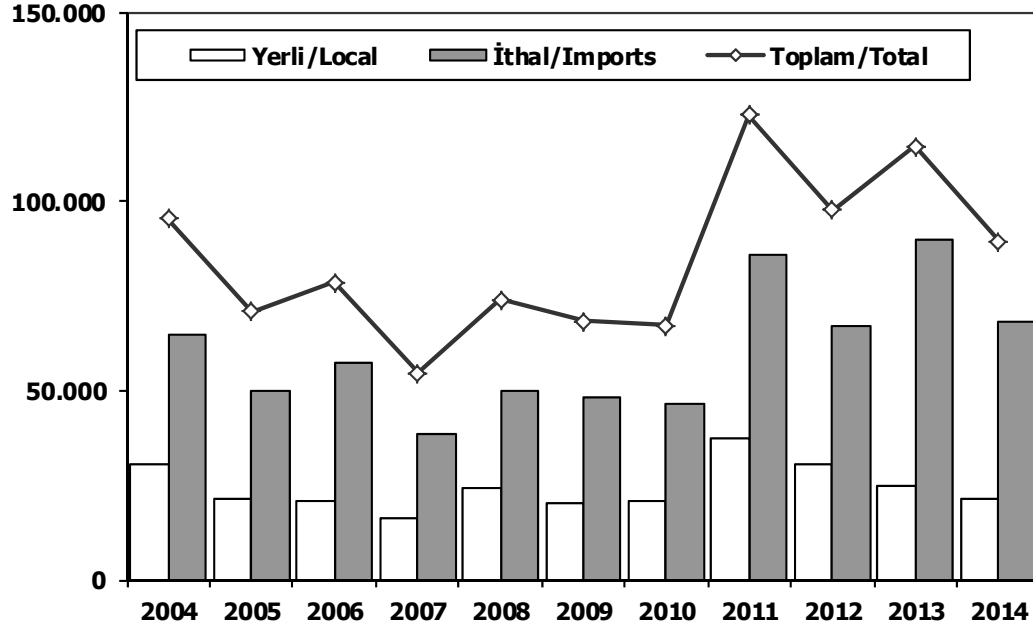
## Hafif Araçlar Pazarı (2004-2014 Ocak-Mart) LV Market (2004-2014 January-March)



	2004	2005	2006	2007	2008	2009	2010	2011	2012	2013	2012 3 Ay 3 Mo	2013 3 Ay 3 Mo		2004	2005	2006	2007	2008	2009	2010	2011	2012	2013	2014
Toplam/Total	741.269	758.537	665.515	634.206	526.544	575.869	793.172	<b>910.867</b>	817.620	893.124	160.759	122.852	Yerli/Local	57.977	44.740	46.212	37.454	49.297	35.241	41.107	<b>69.196</b>	51.098	45.477	34.026
İthalat/Imports	430.204	436.033	382.460	355.752	306.087	313.921	465.408	538.532	511.694	<b>615.609</b>	109.043	82.890	İthal/Imports	82.598	72.480	82.695	56.737	71.130	61.218	61.929	<b>112.762</b>	84.655	107.127	81.246
İthalat/Imports (%)	58	57	57	56	58	55	59	59	63	<b>69</b>	68	67	Toplam/Total	140.575	117.220	128.907	94.191	120.427	96.459	103.036	<b>181.958</b>	135.753	152.604	115.272
													İthalat/Imports (%)	59	62	64	60	59	63	60	62	62	70	<b>70</b>

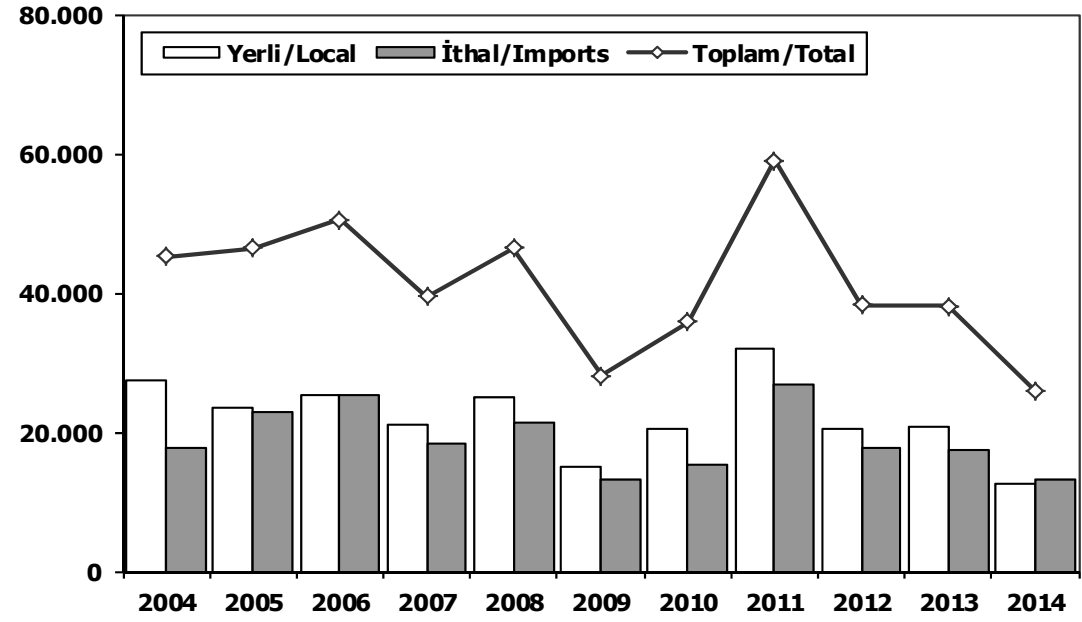
## Otomobil Pazarı (2004-2014 Ocak-Mart)

### P.Cars Market (2004-2014 January-March)



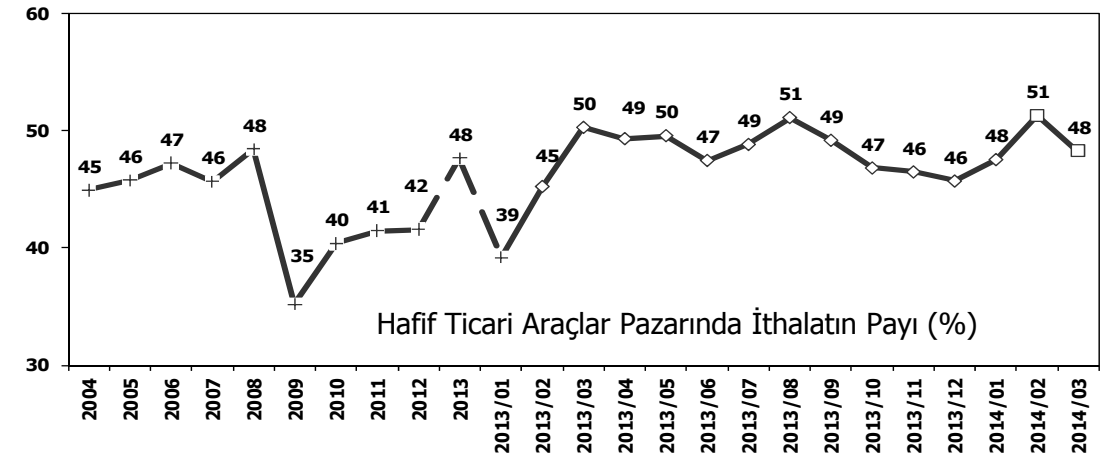
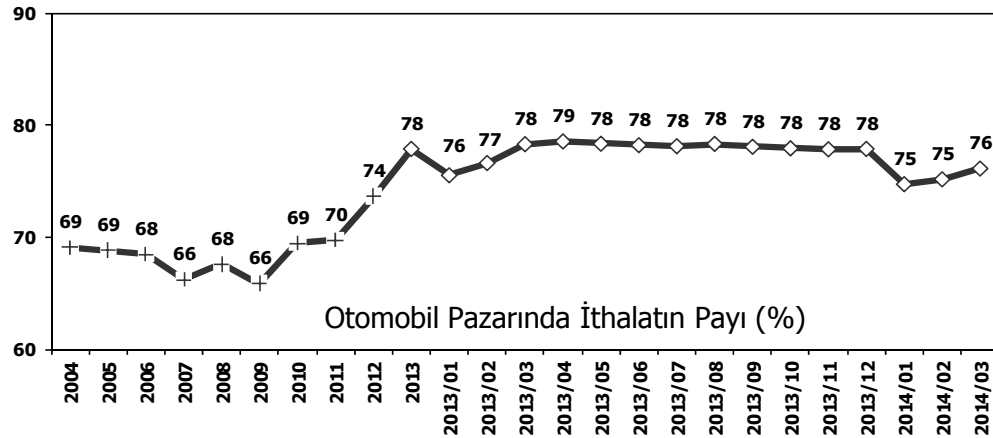
## Hafif Ticari Araçlar Pazarı (2004-2014 Ocak-Mart)

### Light Commercial Vehicle Market (2004-2014 January-March)



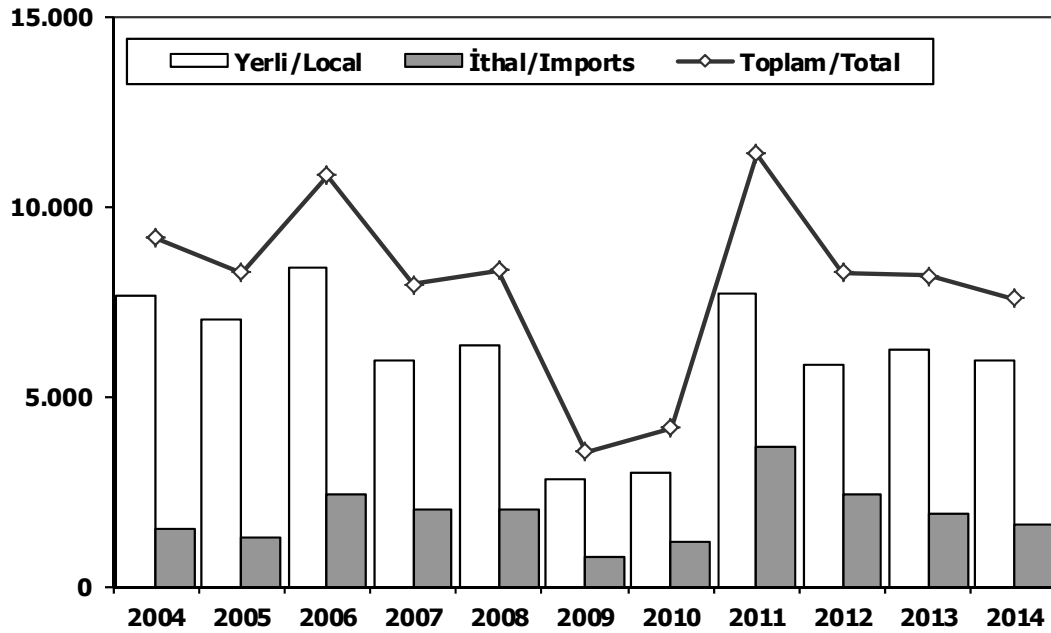
	2004	2005	2006	2007	2008	2009	2010	2011	2012	2013	2014
Yerli/Local	30.610	21.116	21.020	16.278	24.175	20.361	20.614	<b>37.090</b>	30.704	24.846	21.342
İthal/Imports	64.785	49.620	57.411	38.456	49.756	47.926	46.589	85.805	66.832	<b>89.588</b>	68.005
Toplam/Total	95.395	70.736	78.431	54.734	73.931	68.287	67.203	<b>122.895</b>	97.536	114.434	89.347
İthalat/Imports (%)	68	70	73	70	67	70	69	70	69	78	<b>76</b>

	2004	2005	2006	2007	2008	2009	2010	2011	2012	2013	2014
Yerli/Local	27.367	23.624	25.192	21.176	25.122	14.880	20.493	<b>32.106</b>	20.394	20.631	12.684
İthal/Imports	17.813	22.860	25.284	18.281	21.374	13.292	15.340	<b>26.957</b>	17.823	17.539	13.241
Toplam/Total	45.180	46.484	50.476	39.457	46.496	28.172	35.833	<b>59.063</b>	38.217	38.170	25.925
İthalat/Imports (%)	39	49	50	46	46	47	43	46	47	46	<b>51</b>



## Ağır Ticari Araçlar Pazarı (2004-2014 Ocak-Mart)

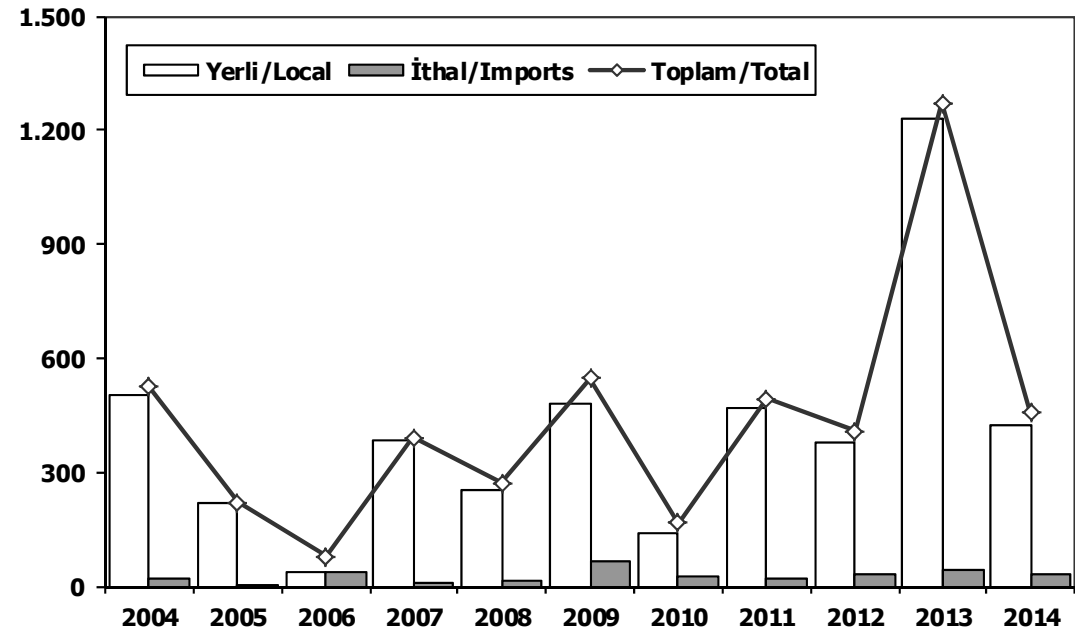
### HCV Market (2004-2014 January-March)



	2004	2005	2006	2007	2008	2009	2010	2011	2012	2013	2014
Yerli/Local	7.637	7.005	<b>8.357</b>	5.943	6.309	2.798	2.987	7.693	5.831	6.239	5.936
İthal/Imports	1.521	1.255	2.441	2.006	1.991	751	1.168	<b>3.688</b>	2.419	1.916	1.644
Toplam/Total	9.158	8.260	10.798	7.949	8.300	3.549	4.155	<b>11.381</b>	8.250	8.155	7.580
İthalat/Imports (%)	17	15	23	25	24	21	28	<b>32</b>	29	23	22

## Otobüs Pazarı (2004-2014 Ocak-Mart)

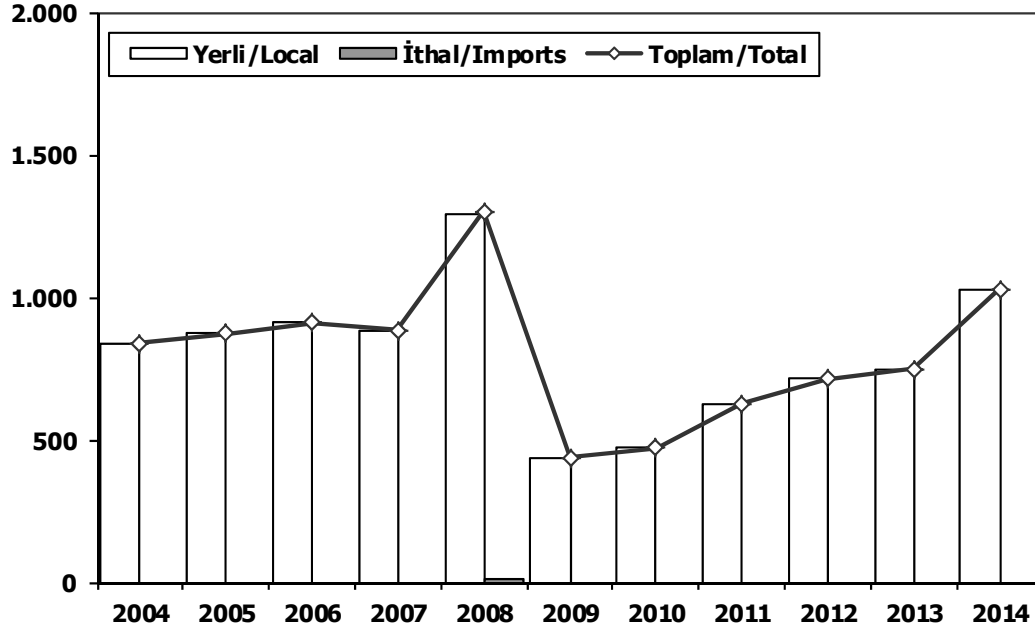
### Bus Market (2004-2014 January-March)



	2004	2005	2006	2007	2008	2009	2010	2011	2012	2013	2014
Yerli/Local	503	219	39	383	255	480	140	471	379	<b>1.232</b>	426
İthal/Imports	20	2	39	9	15	<b>67</b>	27	21	29	40	30
Toplam/Total	523	221	78	392	270	547	167	492	408	<b>1.272</b>	456
İthalat/Imports (%)	4	1	50	2	6	12	<b>16</b>	4	7	3	7

## Midibüs Pazarı (2004-2014 Ocak-Mart) (7-9 mt / 25-35 Kişilik)

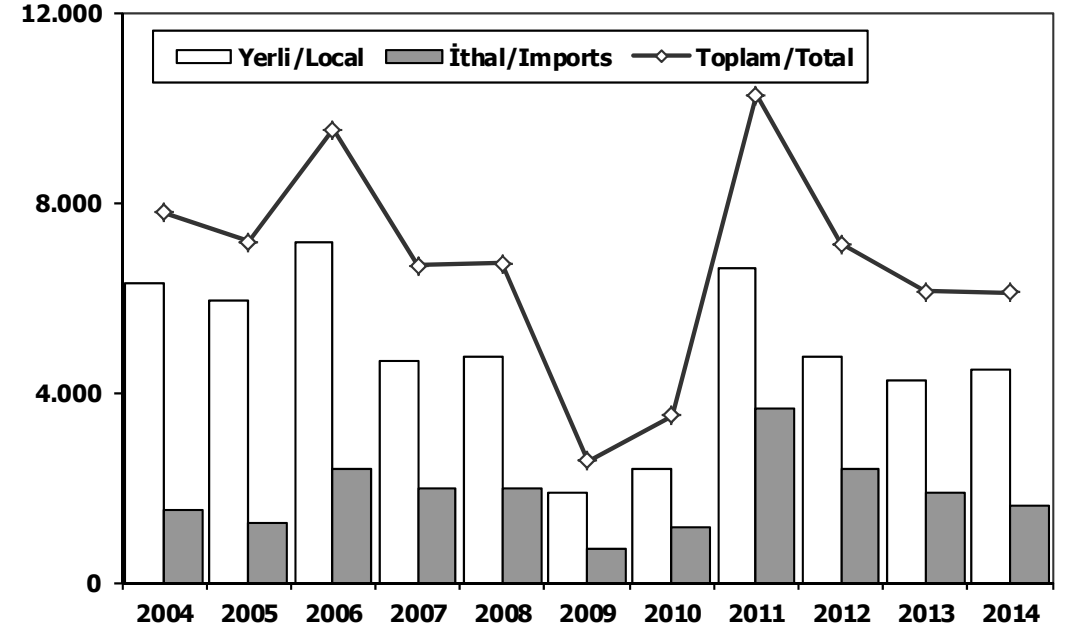
Midibus (2004-2014 January-March) Market (7-9 mt / 25-35 Passengers)



	2004	2005	2006	2007	2008	2009	2010	2011	2012	2013	2014
Yerli/Local	840	872	910	883	<b>1.294</b>	438	471	627	713	748	1.028
İthal/Imports	0	0	0	0	9	0	0	0	0	0	0
Toplam/Total	840	872	910	883	<b>1.303</b>	438	471	627	713	748	1.028
İthalat/Imports (%)	0	0	0	0	1	0	0	0	0	0	0

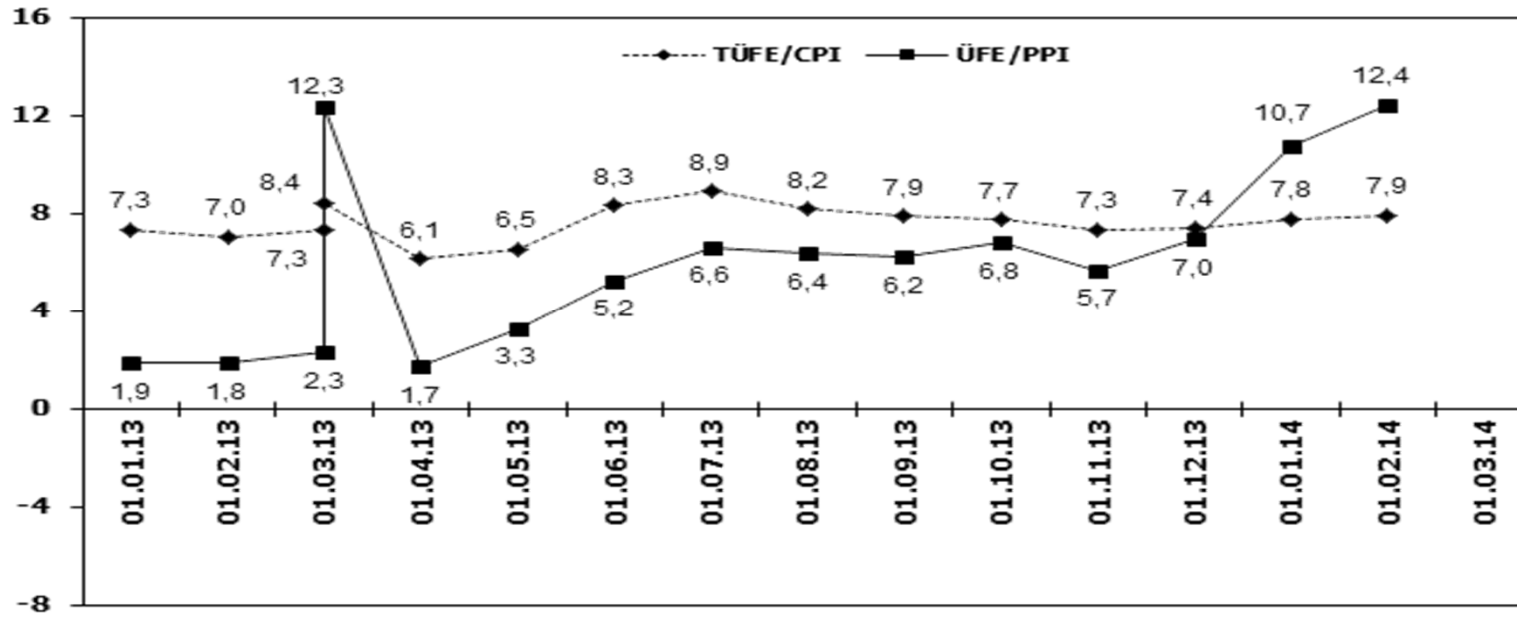
## Kamyon Pazarı (2004-2014 Ocak-Mart)

Truck Market (2004-2014 January-March)

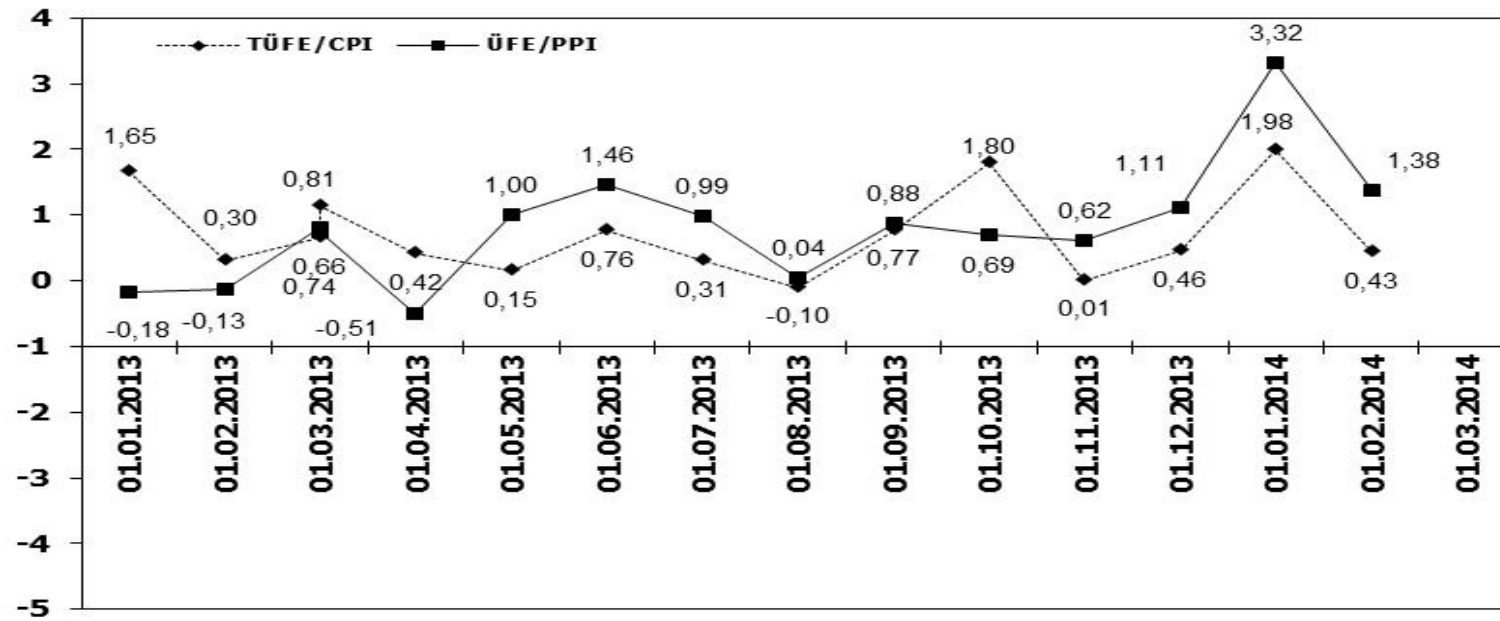


	2004	2005	2006	2007	2008	2009	2010	2011	2012	2013	2014
Yerli/Local	6.294	5.914	<b>7.142</b>	4.677	4.760	1.880	2.376	6.595	4.739	4.259	4.482
İthal/Imports	1.501	1.253	2.402	1.997	1.967	684	1.141	<b>3.667</b>	2.390	1.876	1.614
Toplam/Total	7.795	7.167	9.544	6.674	6.727	2.564	3.517	<b>10.262</b>	7.129	6.135	6.096
İthalat/Imports (%)	19	17	25	30	29	27	32	<b>36</b>	34	31	26

## TÜFE ve ÜFE'nin Yıllık Değişimi (%) CPI and PPI Yearly Changes (%)



## TÜFE ve ÜFE'nin Aylık Değişimi (%) CPI and PPI Monthly Changes (%)





## 2014 Yılı İthal Hafif Araç Satışları 2014 Light Vehicles Import Sales

2014 YILI İTHAL OTOMOBİL SATIŞLARI / P.Cars Import 2014

	2013 TOPLAMI 2013 Total	1	2	3	4	5	6	7	8	9	10	11	12	2014 TOPLAMI 2014 Total
VOLKSWAGEN	89.304	4.242	5.080	6.247	0	0	0	0	0	0	0	0	0	15.569
RENAULT	32.904	1.719	1.616	2.101	0	0	0	0	0	0	0	0	0	5.436
OPEL	55.719	1.672	1.374	2.316	0	0	0	0	0	0	0	0	0	5.362
NISSAN	18.417	741	1.603	2.355	0	0	0	0	0	0	0	0	0	4.699
FORD	58.405	1.389	1.244	1.621	0	0	0	0	0	0	0	0	0	4.254
DACIA	28.901	1.158	1.229	1.854	0	0	0	0	0	0	0	0	0	4.241
HYUNDAI	29.824	882	1.125	1.362	0	0	0	0	0	0	0	0	0	3.369
MERCEDES	20.023	582	900	1.783	0	0	0	0	0	0	0	0	0	3.265
B.M.W	20.705	334	617	1.875	0	0	0	0	0	0	0	0	0	2.826
PEUGEOT	23.068	622	871	1.258	0	0	0	0	0	0	0	0	0	2.751
AUDI	14.987	455	750	1.175	0	0	0	0	0	0	0	0	0	2.380
CITROEN	19.690	657	715	790	0	0	0	0	0	0	0	0	0	2.162
SKODA	12.833	458	632	747	0	0	0	0	0	0	0	0	0	1.837
KIA	13.195	483	462	694	0	0	0	0	0	0	0	0	0	1.639
SEAT	11.065	536	352	524	0	0	0	0	0	0	0	0	0	1.412
TOYOTA	22.421	366	363	512	0	0	0	0	0	0	0	0	0	1.241
FIAT	10.913	587	313	306	0	0	0	0	0	0	0	0	0	1.206
VOLVO	5.021	252	256	412	0	0	0	0	0	0	0	0	0	920
HONDA	3.394	142	257	285	0	0	0	0	0	0	0	0	0	684
CHEVROLET	12.506	206	161	134	0	0	0	0	0	0	0	0	0	501
SUBARU	1.101	120	70	116	0	0	0	0	0	0	0	0	0	306
MINI (İngiliz)	1.557	51	51	150	0	0	0	0	0	0	0	0	0	252
SUZUKI	1.623	76	68	98	0	0	0	0	0	0	0	0	0	242
LAND ROVER	1.323	26	52	142	0	0	0	0	0	0	0	0	0	220
MITSUBISHI	1.488	83	81	53	0	0	0	0	0	0	0	0	0	217
JEEP	973	31	66	64	0	0	0	0	0	0	0	0	0	161
PROTON	715	110	22	24	0	0	0	0	0	0	0	0	0	156
MAZDA	1.377	30	40	69	0	0	0	0	0	0	0	0	0	139
ALFA ROMEO	1.030	60	26	32	0	0	0	0	0	0	0	0	0	118
PORSCHE	517	45	31	27	0	0	0	0	0	0	0	0	0	103
SSANGYONG	972	44	16	38	0	0	0	0	0	0	0	0	0	98
LANCIA	782	8	31	44	0	0	0	0	0	0	0	0	0	83
CHERY	492	17	16	34	0	0	0	0	0	0	0	0	0	67
GEELY	623	12	5	9	0	0	0	0	0	0	0	0	0	26
MASERATI	40	6	8	9	0	0	0	0	0	0	0	0	0	23
SMART	110	4	5	8	0	0	0	0	0	0	0	0	0	17
JAGUAR	97	0	8	3	0	0	0	0	0	0	0	0	0	11
FERRARI	23	0	3	2	0	0	0	0	0	0	0	0	0	5
BENTLEY	21	0	2	1	0	0	0	0	0	0	0	0	0	3
INFINITI	37	1	0	1	0	0	0	0	0	0	0	0	0	2
LAMBORGHINI	4	0	1	0	0	0	0	0	0	0	0	0	0	1
TATA	326	1	0	0	0	0	0	0	0	0	0	0	0	1
<b>TOPLAM</b>	<b>517.526</b>	<b>18.208</b>	<b>20.522</b>	<b>29.275</b>	<b>0</b>	<b>0</b>	<b>0</b>	<b>0</b>	<b>0</b>	<b>0</b>	<b>0</b>	<b>0</b>	<b>0</b>	<b>68.005</b>

2014 YILI İTHAL HAFİF TİCARİ ARAÇ SATIŞLARI / Light Commercial Vehicles Import 2014

	2013 TOPLAMI 2013 Total	1	2	3	4	5	6	7	8	9	10	11	12	2014 TOPLAMI 2014 Total
VOLKSWAGEN	23.752	1.152	1.144	1.365	0	0	0	0	0	0	0	0	0	3.661
MERCEDES	10.421	490	389	712	0	0	0	0	0	0	0	0	0	1.591
RENAULT	11.550	565	431	556	0	0	0	0	0	0	0	0	0	1.552
FIAT	6.245	397	455	414	0	0	0	0	0	0	0	0	0	1.266
DACIA	7.494	510	400	315	0	0	0	0	0	0	0	0	0	1.225
CITROEN	6.679	234	103	318	0	0	0	0	0	0	0	0	0	655
MITSUBISHI	3.592	229	180	201	0	0	0	0	0	0	0	0	0	610
TOYOTA	2.413	139	105	349	0	0	0	0	0	0	0	0	0	593
ISUZU	2.587	228	138	174	0	0	0	0	0	0	0	0	0	540
PEUGEOT	8.323	78	105	249	0	0	0	0	0	0	0	0	0	432
IVECO	2.204	77	127	212	0	0	0	0	0	0	0	0	0	416
HYUNDAI	1.480	117	86	73	0	0	0	0	0	0	0	0	0	276
KIA	453	47	44	62	0	0	0	0	0	0	0	0	0	153
SSANGYONG	859	63	55	11	0	0	0	0	0	0	0	0	0	129
TATA	316	20	34	16	0	0	0	0	0	0	0	0	0	70
FORD	657	1	23	12	0	0	0	0	0	0	0	0	0	36
NISSAN	878	9	2	20	0	0	0	0	0	0	0	0	0	31
MAZDA	3	0	5	0	0	0	0	0	0	0	0	0	0	5
<b>TOPLAM</b>	<b>89.906</b>	<b>4.356</b>	<b>3.826</b>	<b>5.059</b>	<b>0</b>	<b>0</b>	<b>0</b>	<b>0</b>	<b>0</b>	<b>0</b>	<b>0</b>	<b>0</b>	<b>0</b>	<b>13.241</b>