



OTOMOTİV SANAYİİ DERNEĐİ
AUTOMOTIVE MANUFACTURERS ASSOCIATION

AYLIK RAPOR

Automotive Industry Monthly Report

Şubat / February 2015

- **Üretim**/Production
- **Satış**/Sales
- **İthalat**/Imports
- **İhracat**/Exports

OSD "OICA" Üyesidir



OSD is a Member of "OICA"



2015 Şubat Ayı Özeti / 2015 February Summary

KONULAR/MATTERS		ŞUBAT / FEBRUARY			2 AY/ 2 MONTHS			SON 12 AYLIK / YoY		
		2014	2015	2015/2014 (%)	2014	2015	2015/2014 (%)	2014	2015	2015/2014 (%)
Üretim/Production	Toplam/Total	83.140	109.011	31	158.182	211.585	34	1.106.389	1.223.848	11
	Otomobil/P.Cars	53.250	65.238	23	105.256	125.652	19	649.968	753.835	16
Pazar/Market	Toplam/Total	37.308	58.532	57	71.533	95.099	33	876.586	831.052	-5
	Otomobil/P.Cars	27.167	40.817	50	51.535	65.315	27	653.541	601.111	-8
İthalat/Import	Toplam/Total	24.888	36.697	47	47.766	58.626	23	605.432	533.702	-12
	Otomobil/P.Cars	20.522	29.699	45	38.730	46.801	21	508.266	438.053	-14
İhracat/Export	Toplam/Total	69.145	80.294	16	120.569	159.582	32	818.549	924.193	13
	Otomobil/P.Cars	46.549	50.937	9	82.474	99.470	21	498.098	598.989	20
İhracat / Export (\$)	Toplam/Total **	1.867.705.321	1.749.982.961	-6	3.494.514.626	3.508.366.699	0	21.748.815.503	22.789.697.528	5
	Otomobil/P.Cars	597.184.556	562.813.370	-6	1.090.231.627	1.142.709.913	5	6.931.799.752	7.319.919.602	6

PARAMETRELER / PARAMETERS		ŞUBAT / FEBRUARY			2 AY/ 2 MONTHS			SON 12 AYLIK / YoY		
		2014	2015	2015/2014 (%)	2014	2015	2015/2014 (%)	2014	2015	2015/2014 (%)
ÜFE/PPI		1,98	1,20	**	4,75	1,53	**	12,40	3,10	**
TÜFE/CPI		0,43	0,71	**	2,41	1,82	**	7,89	7,55	**
Sanayi Endeksi/Industry Index		1,86	1,45	**	5,21	1,64	**	13,01	3,98	**
\$ (*)		2,2114	2,5059	13	2,2426	2,4609	10	2,0096	2,2276	11
EURO (*)		3,0456	2,8128	-8	3,0619	2,7753	-9	2,6803	2,8436	6
Japon Yeni (*)		2,1599	2,0885	-3	2,1929	2,0649	-6	2,0035	2,0345	2

(*) Ortalama Değerler / Average Values

(**) Toplam Sanayi / Total Industry Including Components

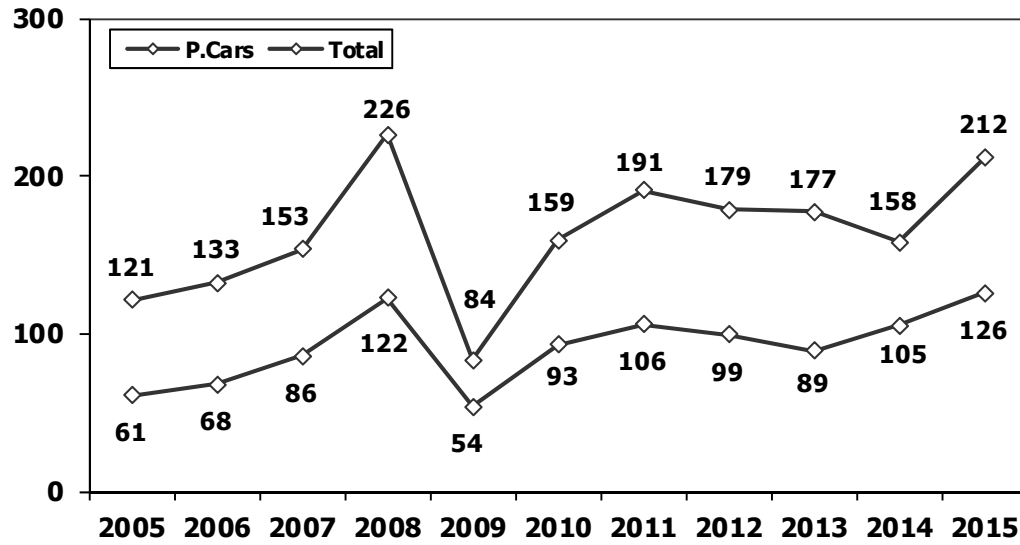
2014/2015 Yılları Üretim 2014/2015 Production

K.KAMYON : AYA 3.5-12 Ton (L.Truck:GVW 3.5-12 Ton)

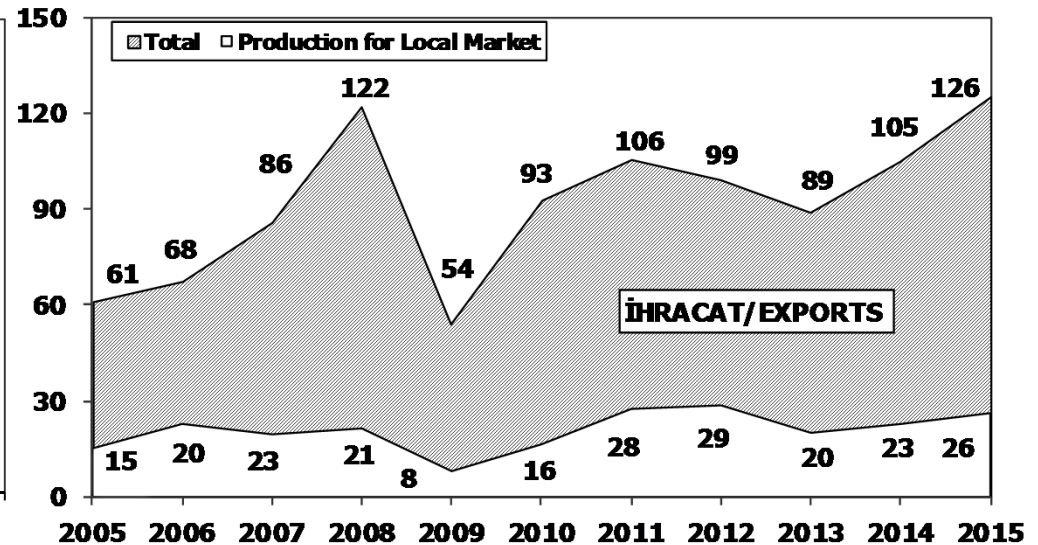
B.KAMYON : AYA 12 Ton'dan Büyük (M.Truck:GVW 12 Ton And Up)

TİPLER	ŞUBAT AYI ÜRETİMİ February Production		2 AYLIK ÜRETİM 2 Months Production		DEĞİŞİM % Percent Change %	
	2014	2015	2014	2015	ŞUBAT February	2 AY 2 Months
OTOMOBİL - Pass.Car	53.250	65.238	105.256	125.652	23	19
TİCARİ ARAÇLAR - Commercial Vehicles	29.890	43.773	52.926	85.933	46	62
* B. KAMYON - M. Truck	1.872	2.343	3.640	4.846	25	33
* K. KAMYON - L. Truck	308	206	567	478	-33	-16
* KAMYONET - Pick Up	24.832	35.061	43.220	69.353	41	60
* OTOBÜS - Bus	588	602	1.073	1.237	2	15
* MİNİBÜS - Minibus	1.754	5.058	3.291	9.012	188	174
* MİDİBÜS - Midibus	536	503	1.135	1.007	-6	-11
TAŞIT ARAÇLARI TOPLAM - MV Total	83.140	109.011	158.182	211.585	31	34
TRAKTÖR - F.Tractor	3.694	4.367	7.096	7.971	18	12
GENEL TOPLAM - Grand Total	86.834	113.378	165.278	219.556	31	33

Toplam Üretim ve Otomobil Üretimi (x1000) (Ocak-Şubat)
Total & P.Cars Production (x1000) (January-February)



Otomobil Üretimi ve İhracat (x1000) (Ocak-Şubat)
P.Cars Production & Exports (x1000) (January-February)





2 Aylık Üretim (2 Months Production)

FİRMALAR Companies	OTOMOBİL Pass.Car	%	K.KAMYON L.Truck	%	B.KAMYON Mid.Truck	%	KAMYONET Pick Up	%	OTOBÜS Bus	%	MINİBÜS Mini-Bus	%	MİDİBÜS Midi-Bus	%	TRAKTÖR F.Tractor	%	TOPLAM Totals
A.I.O.S.	0	0	477	100	0	0	505	1	28	2	0	0	310	31	0	0	1.320
FORD OTOSAN	2.580	2	0	0	1.512	31	39.542	57	0	0	8.817	98	0	0	0	0	52.451
HATTAT TARIM	0	0	0	0	0	0	0	0	0	0	0	0	0	0	344	4	344
HONDA TÜRKİYE	1.912	2	0	0	0	0	0	0	0	0	0	0	0	0	0	0	1.912
HYUNDAI ASSAN	33.000	26	0	0	0	0	0	0	0	0	0	0	0	0	0	0	33.000
KARSAN	0	0	0	0	0	0	0	0	4	0	195	2	52	5	0	0	251
M. BENZ TÜRK	0	0	0	0	3.334	69	0	0	627	51	0	0	0	0	0	0	3.961
MAN TÜRKİYE	0	0	0	0	0	0	0	0	295	24	0	0	0	0	0	0	295
OTOKAR	0	0	1	0	0	0	0	0	26	2	0	0	415	41	0	0	442
OYAK RENAULT	58.764	47	0	0	0	0	0	0	0	0	0	0	0	0	0	0	58.764
TEMSA GLOBAL	0	0	0	0	0	0	0	0	257	21	0	0	230	23	0	0	487
TOFAŞ	10.535	8	0	0	0	0	29.306	42	0	0	0	0	0	0	0	0	39.841
TOYOTA	18.861	15	0	0	0	0	0	0	0	0	0	0	0	0	0	0	18.861
TÜRK TRAKTÖR	0	0	0	0	0	0	0	0	0	0	0	0	0	0	7.627	96	7.627
TOPLAM	125.652	100	478	100	4.846	100	69.353	100	1.237	100	9.012	100	1.007	100	7.971	100	219.556

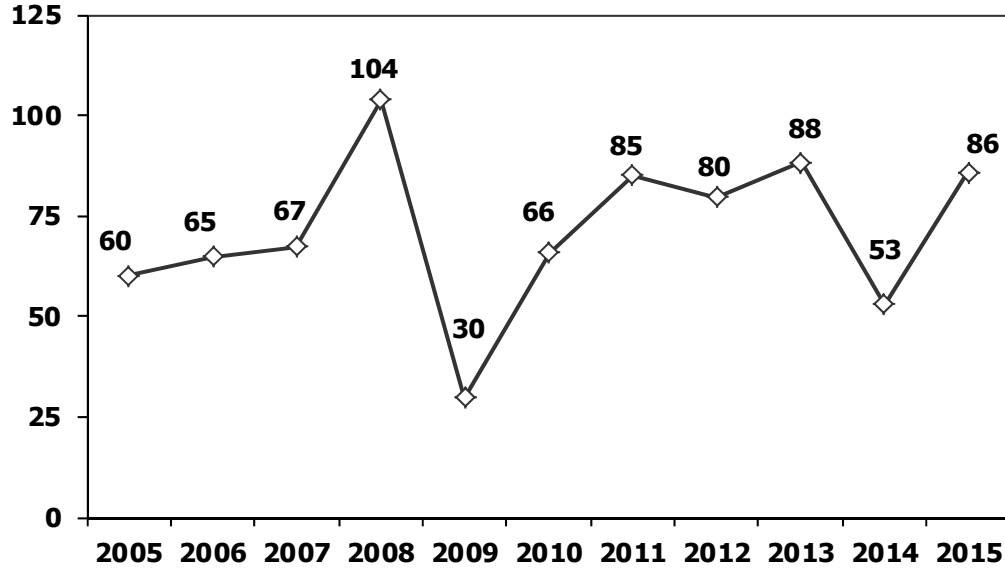
Şubat Ayı Üretimi (February Production)

FİRMALAR Companies	OTOMOBİL Pass.Car	%	K.KAMYON L.Truck	%	B.KAMYON Mid.Truck	%	KAMYONET Pick Up	%	OTOBÜS Bus	%	MINİBÜS Mini-Bus	%	MİDİBÜS Midi-Bus	%	TRAKTÖR F.Tractor	%	TOPLAM Totals
A.I.O.S.	0	0	206	100	0	0	308	1	21	3	0	0	123	24	0	0	658
FORD OTOSAN	1.492	2	0	0	789	34	18.507	53	0	0	4.921	97	0	0	0	0	25.709
HATTAT	0	0	0	0	0	0	0	0	0	0	0	0	0	0	203	5	203
HONDA TÜRKİYE	955	2	0	0	0	0	0	0	0	0	0	0	0	0	0	0	955
HYUNDAI ASSAN	17.800	27	0	0	0	0	0	0	0	0	0	0	0	0	0	0	17.800
KARSAN	0	0	0	0	0	0	0	0	2	0	137	3	26	5	0	0	165
M. BENZ TÜRK	0	0	0	0	1.554	66	0	0	279	46	0	0	0	0	0	0	1.833
MAN TÜRKİYE	0	0	0	0	0	0	0	0	158	26	0	0	0	0	0	0	158
OTOKAR	0	0	0	0	0	0	0	0	15	2	0	0	249	50	0	0	264
OYAK RENAULT	30.252	46	0	0	0	0	0	0	0	0	0	0	0	0	0	0	30.252
TEMSA	0	0	0	0	0	0	0	0	127	21	0	0	105	21	0	0	232
TOFAŞ	5.354	8	0	0	0	0	16.246	46	0	0	0	0	0	0	0	0	21.600
TOYOTA	9.385	14	0	0	0	0	0	0	0	0	0	0	0	0	0	0	9.385
TÜRK TRAKTÖR	0	0	0	0	0	0	0	0	0	0	0	0	0	0	4.164	95	4.164
TOPLAM	65.238	100	206	100	2.343	100	35.061	100	602	100	5.058	100	503	100	4.367	100	113.378



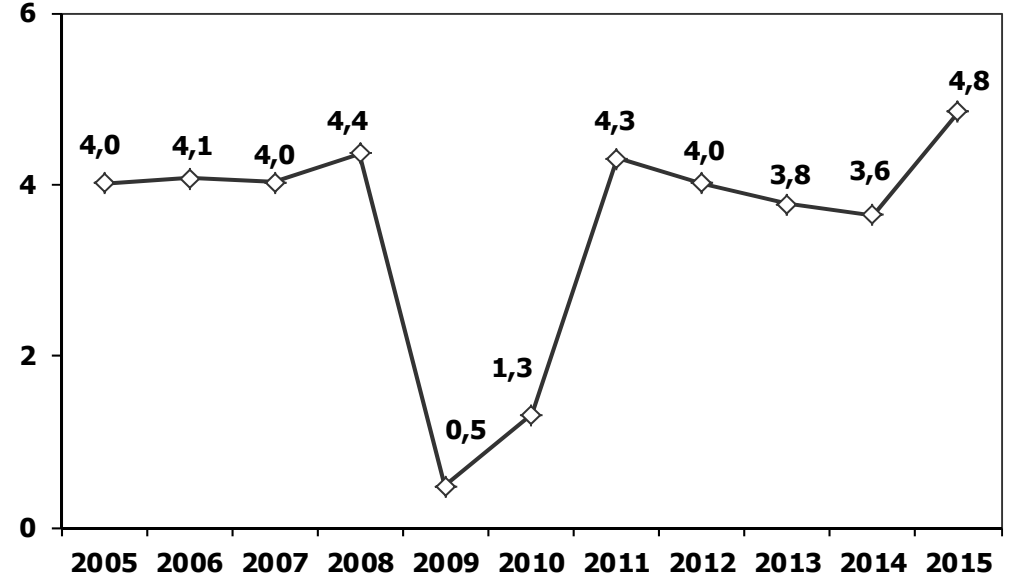
Ticari Araç Üretimi (x1000) (Ocak-Şubat)

Commercial Vehicle Production (x1000) (January-February)



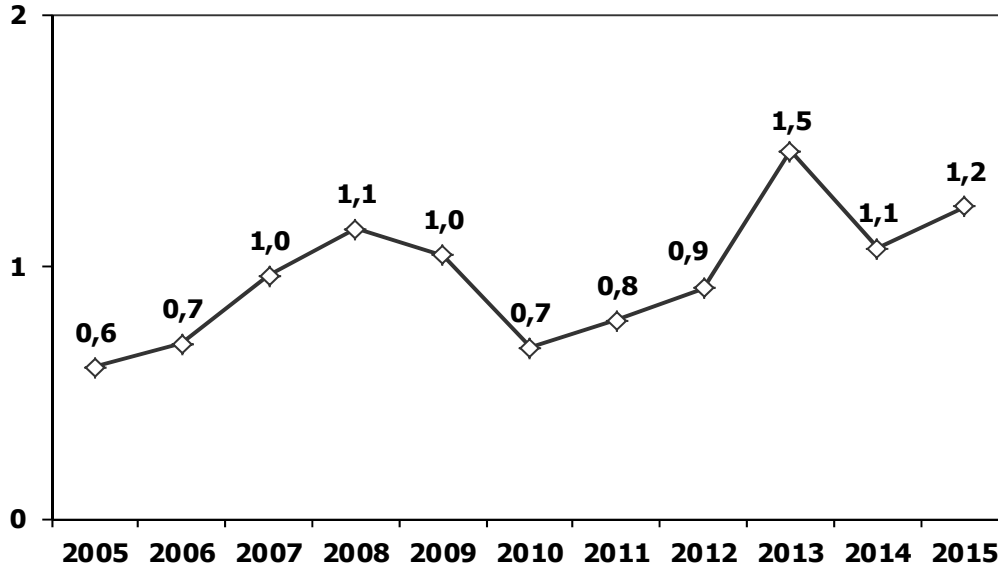
(AYA >12 Ton) Büyük Kamyon Üretimi (x1000) (Ocak-Şubat)

(GVW >12 Ton) Heavy Truck Production (x1000) (January-February)



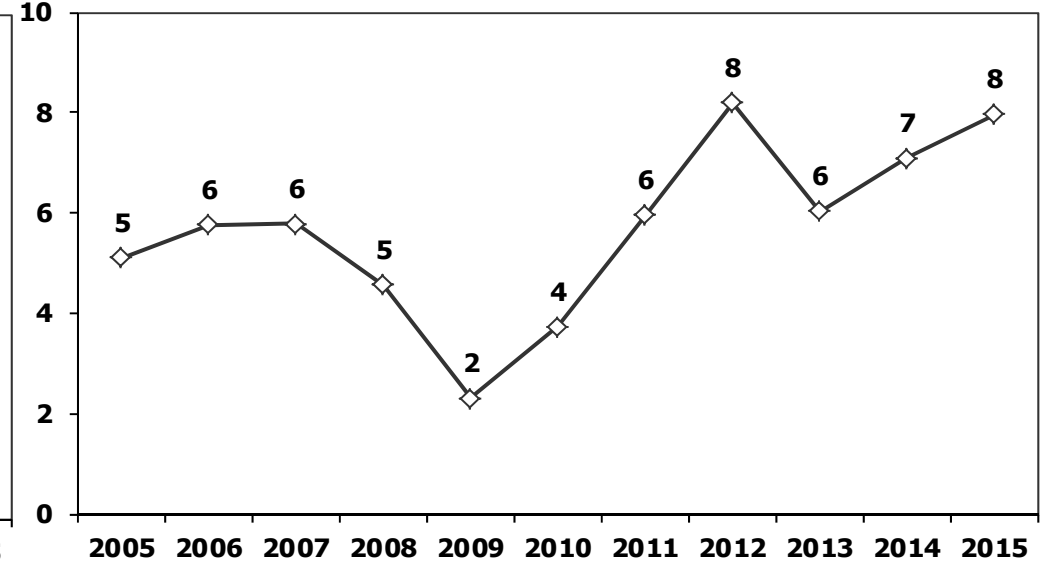
Otobüs Üretimi (x1000) (Ocak-Şubat)

Bus Production (x1000) (January-February)

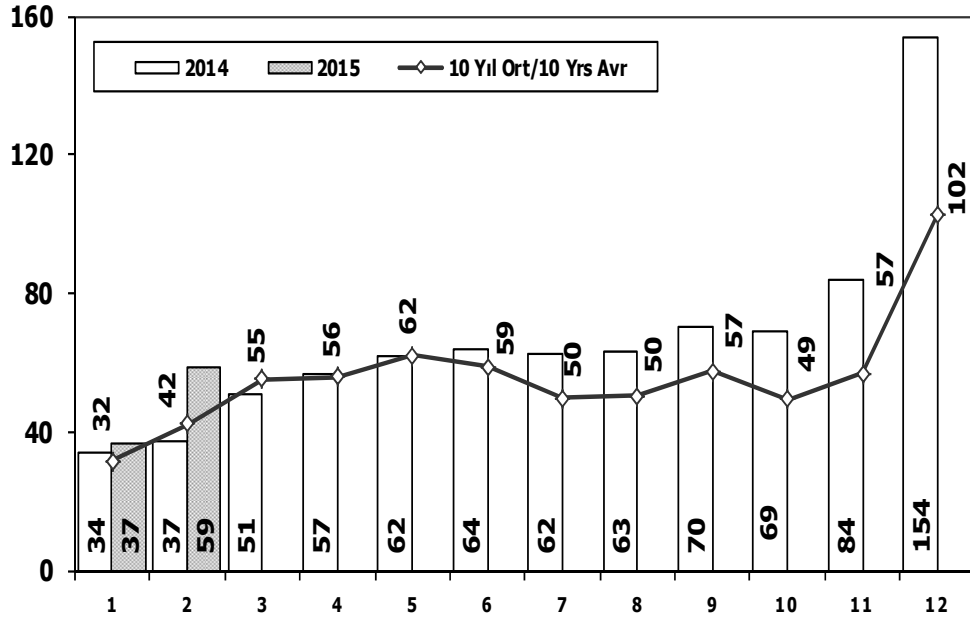


Traktör Üretimi (x1000) (Ocak-Şubat)

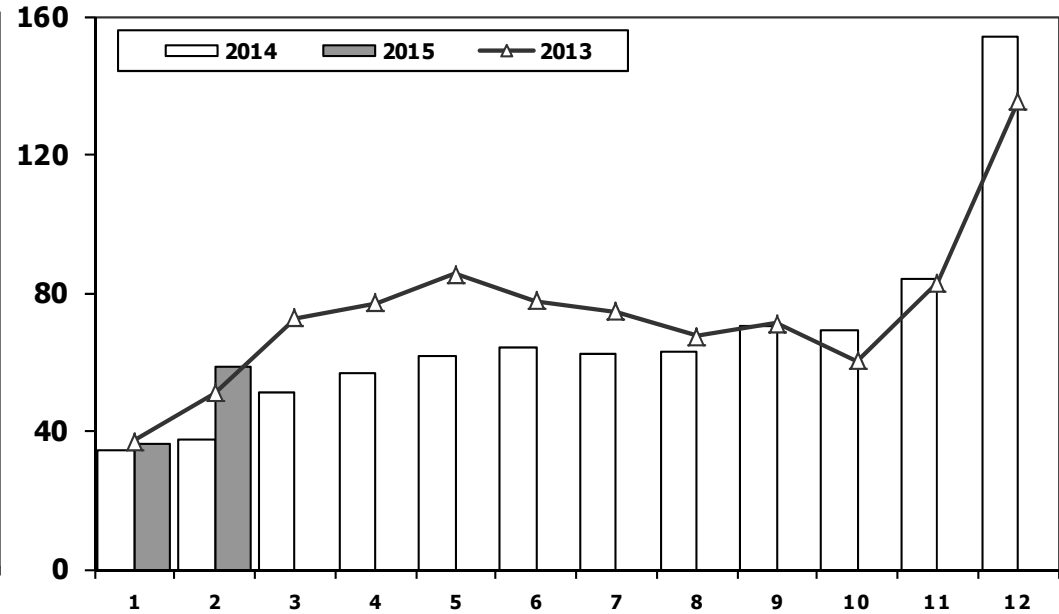
F. Tractor Production (x1000) (January-February)



Toplam Pazarın Analizi (x1000) Total Market Analysis (x1000)



Toplam Pazar (x1000) Total Market (x1000)

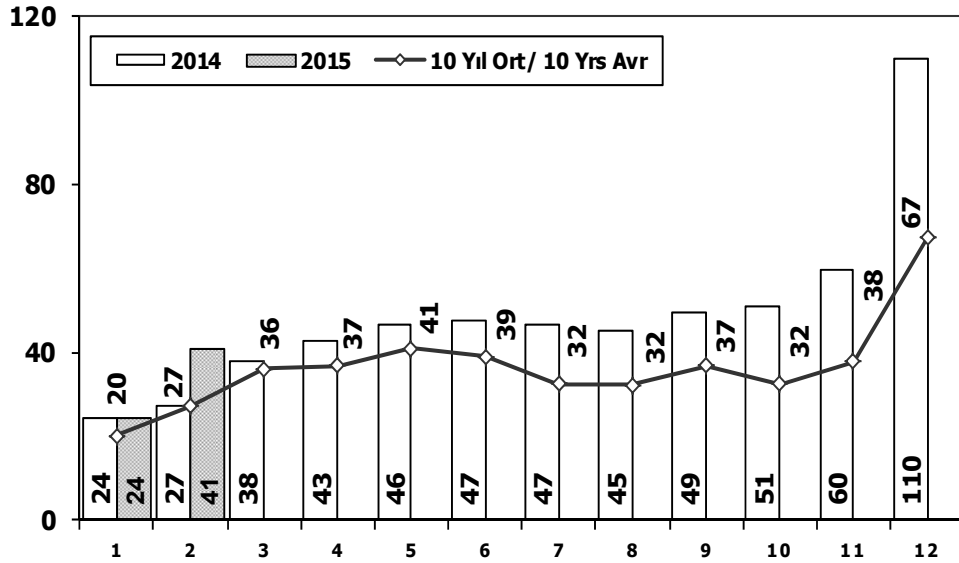


Aylar / Months	10 Yil Ort. 10 Yrs Avr. (x1000)	2015 (x1000)	%
1	31,7	36,6	15,3
2	42,3	58,5	38,5
Total	74,0	95,1	28,6

	1	2	3	4	5	6	7	8	9	10	11	12	2 Ay/Mo	Total
2005	22.687	38.291	64.502	60.873	71.383	64.379	63.847	68.647	66.580	60.791	65.719	110.838	60.978	758.537
2006	29.969	44.646	65.090	68.853	83.289	58.203	40.037	47.374	49.629	39.805	55.898	82.722	74.615	665.515
2007	24.950	31.702	45.488	45.633	51.255	51.661	50.117	54.171	50.078	56.058	67.017	106.076	56.652	634.206
2008	33.792	38.121	56.814	50.967	51.627	49.393	44.692	46.592	46.829	35.147	28.152	44.418	71.913	526.544
2009	20.631	22.846	56.531	54.426	64.887	63.102	30.246	37.092	83.403	22.117	29.202	91.386	43.477	575.869
2010	21.050	32.313	53.828	57.079	61.628	63.390	63.718	64.645	66.601	76.780	77.406	154.734	53.363	793.172
2011	47.658	62.348	83.333	82.071	85.093	85.863	65.364	61.378	63.643	72.640	67.195	134.281	110.006	910.867
2012	31.219	43.827	68.957	66.014	74.820	74.781	65.122	60.848	73.197	62.677	75.045	121.113	75.046	817.620
2013	37.140	50.931	72.688	77.015	85.421	77.771	74.726	67.383	71.037	60.399	83.017	135.596	88.071	893.124
2014	34.225	37.308	50.964	56.766	61.909	63.952	62.206	62.839	70.180	69.259	83.937	153.941	71.533	807.486
2015	36.567	58.532	0	0	0	0	0	0	0	0	0	0	95.099	95.099

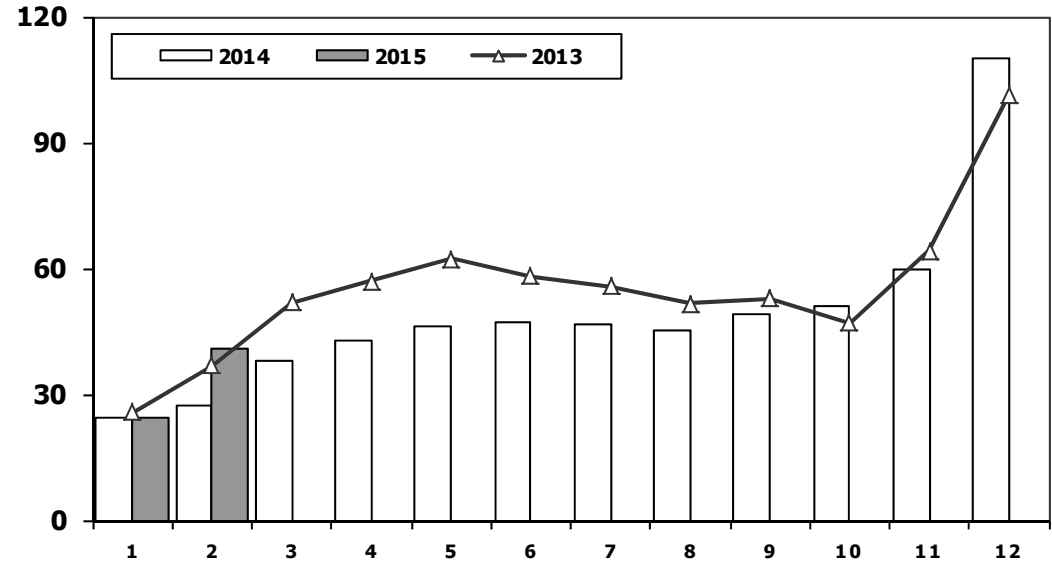
Otomobil Pazarının Analizi (x1000)

P.Cars Market Analysis (x1000)



Otomobil Pazarı (x1000)

P.Cars Market (x1000)

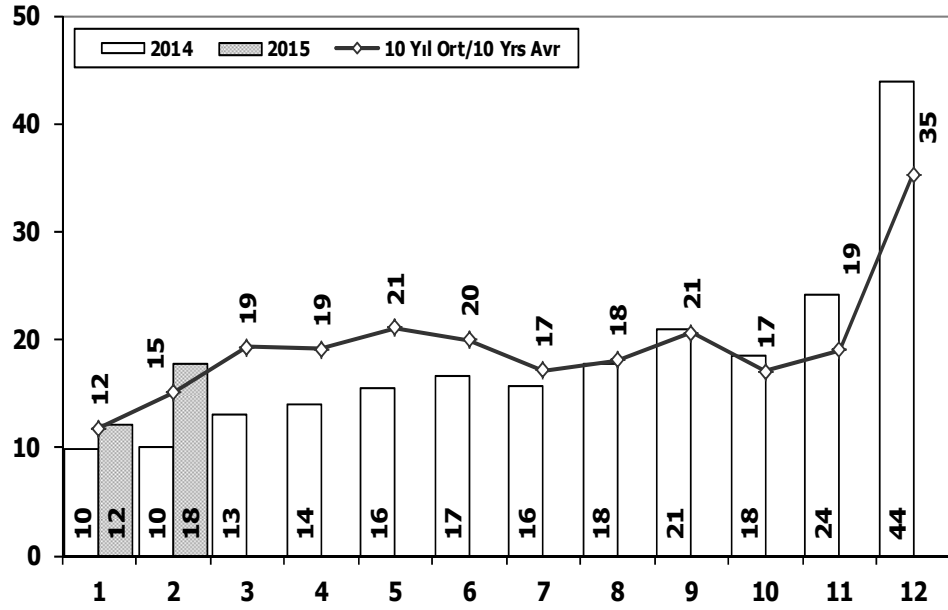


Aylar / Months	10 Yil Ort. 10 Yrs Avr. (x1000)	2015 (x1000)	%
1	20,0	24,5	22,7
2	27,1	40,8	50,4
Total	47,1	65,3	38,6

	1	2	3	4	5	6	7	8	9	10	11	12	2 Ay/Mo	Total
2005	11.595	21.012	38.129	36.206	38.480	40.900	38.969	38.648	36.410	34.960	37.841	65.447	32.607	438.597
2006	16.506	24.929	36.996	40.177	48.521	32.982	22.653	24.873	27.517	21.237	30.477	46.351	41.435	373.219
2007	13.186	17.212	24.336	25.204	29.067	30.126	28.246	28.469	27.662	32.569	39.643	61.745	30.398	357.465
2008	18.588	21.196	34.147	30.313	31.477	28.724	25.530	26.102	27.053	19.788	17.201	25.879	39.784	305.998
2009	13.173	14.492	40.622	36.202	44.188	41.019	16.637	22.537	52.162	13.828	17.781	57.178	27.665	369.819
2010	12.594	20.651	33.958	36.549	40.467	42.086	41.399	42.222	42.477	47.859	50.061	99.461	33.245	509.784
2011	29.868	39.004	54.023	53.835	56.302	56.714	43.518	38.875	39.964	47.508	44.951	88.957	68.872	593.519
2012	21.077	29.189	47.270	45.645	50.460	50.849	44.531	41.236	49.360	43.440	52.297	80.926	50.266	556.280
2013	25.835	36.814	51.785	56.999	62.383	58.290	55.712	51.611	52.925	46.985	64.117	101.199	62.649	664.655
2014	24.368	27.167	37.812	42.769	46.379	47.278	46.602	45.131	49.262	50.814	59.695	110.054	51.535	587.331
2015	24.498	40.817	0	0	0	0	0	0	0	0	0	0	65.315	65.315

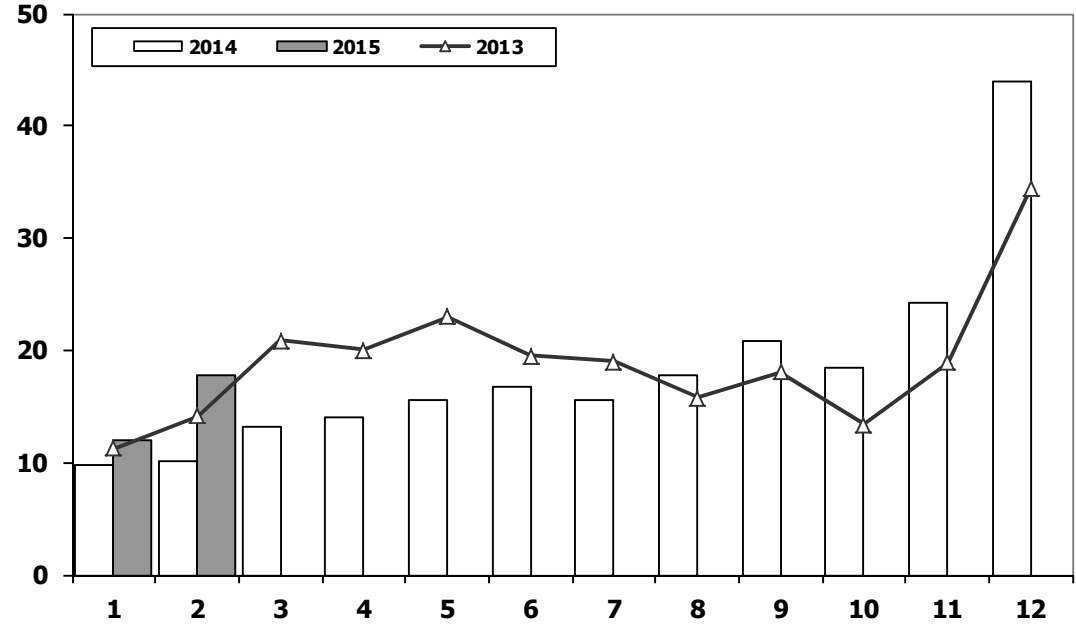
Ticari Araç Pazarının Analizi (x1000)

CV Market Analysis (x1000)



Ticari Araç Pazarı (x1000)

CV Total Market (Local + Imports) (x1000)

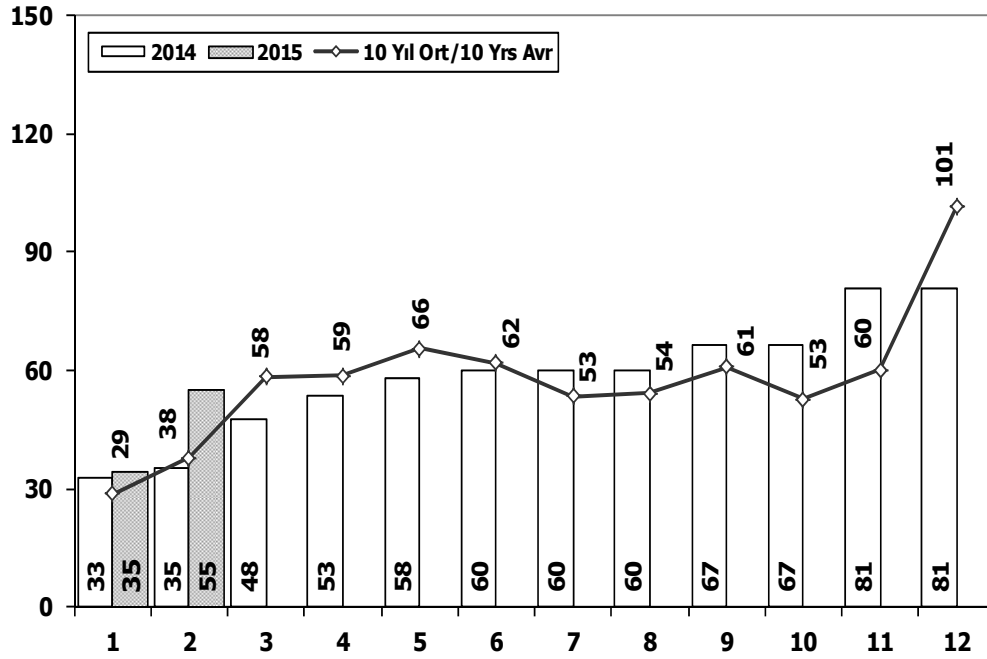


Aylar / Months	10 Yıl Ort. 10 Yrs Avr. (x1000)	2015 (x1000)	%
1	11,8	12,1	2,7
2	15,1	17,7	17,2
Total	26,9	29,8	10,9

	1	2	3	4	5	6	7	8	9	10	11	12	2 Ay/Mo	Total
2005	11.092	17.279	26.373	24.667	32.903	23.479	24.878	29.999	30.170	25.831	27.878	45.391	28.371	319.940
2006	13.463	19.717	28.094	28.676	34.768	25.221	17.384	22.501	22.112	18.568	25.421	36.371	33.180	292.296
2007	11.764	14.490	21.152	20.429	22.188	21.535	21.871	25.702	22.416	23.489	27.374	44.331	26.254	276.741
2008	15.204	16.925	22.667	20.654	20.150	20.669	19.162	20.490	19.776	15.359	10.951	18.539	32.129	220.546
2009	7.458	8.354	15.909	18.224	20.699	22.083	13.609	14.555	31.241	8.289	11.421	34.208	15.812	206.050
2010	8.456	11.662	19.870	20.530	21.161	21.304	22.319	22.423	24.124	28.921	27.345	55.273	20.118	283.388
2011	17.790	23.344	29.310	28.236	28.791	29.149	21.846	22.503	23.679	25.132	22.244	45.324	41.134	317.348
2012	10.142	14.638	21.687	20.369	24.360	23.932	20.591	19.612	23.837	19.237	22.748	40.187	24.780	261.340
2013	11.305	14.117	20.903	20.016	23.038	19.481	19.014	15.772	18.112	13.414	18.900	34.397	25.422	228.469
2014	9.857	10.141	13.152	13.997	15.530	16.674	15.604	17.708	20.918	18.445	24.242	43.887	19.998	220.155
2015	12.069	17.715	0	0	0	0	0	0	0	0	0	0	29.784	29.784

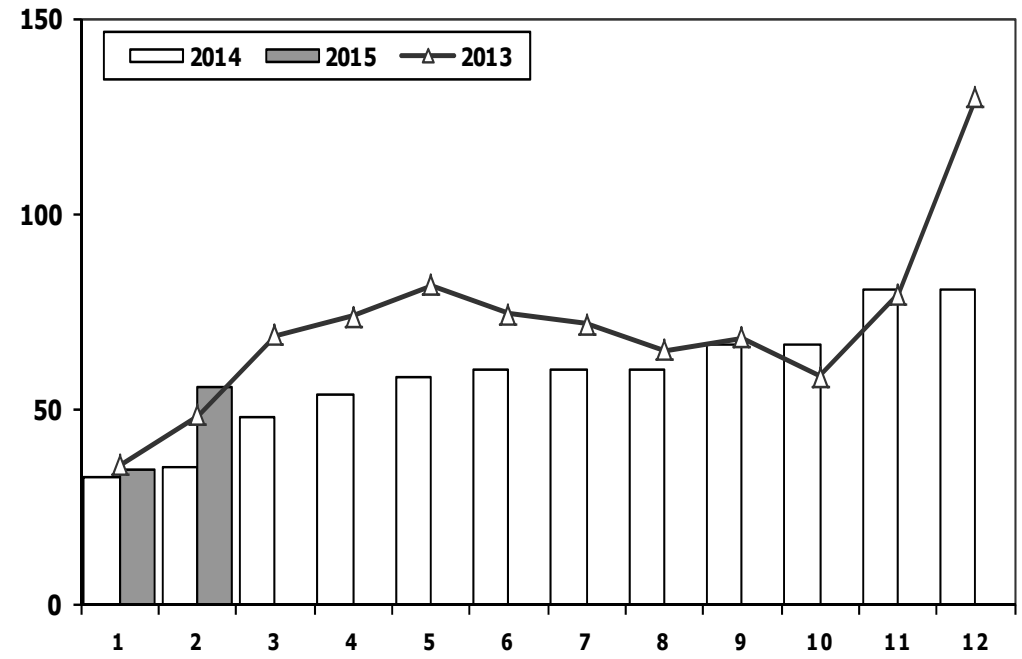


Hafif Araç Pazarının Analizi (x1000) LV Market Analysis (x1000)



Aylar / Months	10 Yil Ort. 10 Yrs Avr. (x1000)	2015 (x1000)	%
1	28,6	34,6	21,2
2	37,7	55,3	46,6
Total	66,3	89,9	35,7

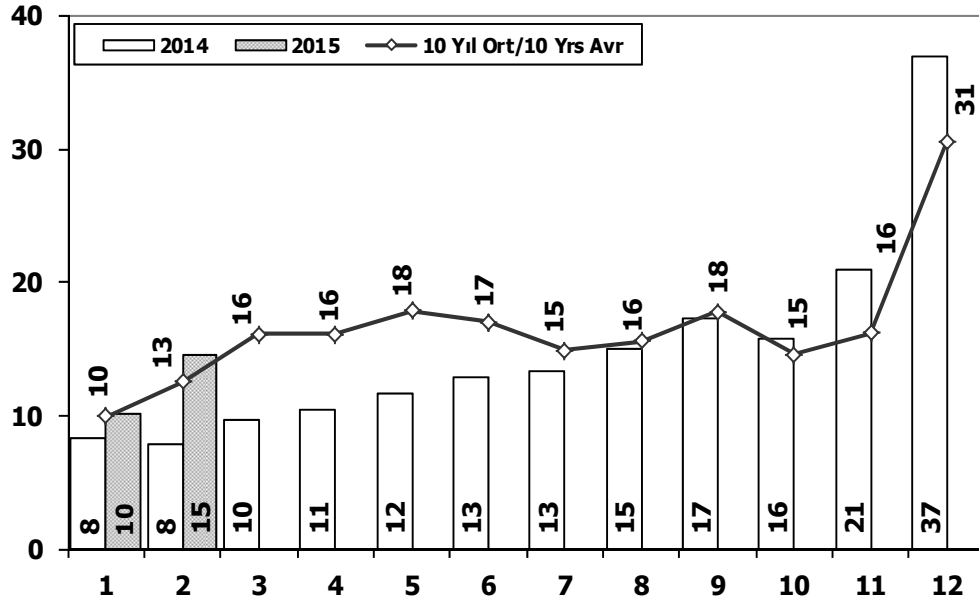
Hafif Araç Pazarı (x1000) LV Total Market (Local + Imports) (x1000)



	1	2	3	4	5	6	7	8	9	10	11	12	2 Ay/Mo	Total
2005	20.747	35.766	60.707	56.844	67.357	60.796	61.015	64.011	61.954	56.638	61.364	103.209	56.513	710.408
2006	27.917	40.938	60.052	64.038	78.229	54.355	37.251	43.767	46.109	36.542	51.867	76.787	68.855	617.852
2007	23.117	29.184	41.890	42.366	47.938	48.674	47.490	50.558	46.581	52.725	63.313	100.926	52.301	594.762
2008	31.527	35.251	53.649	47.701	48.598	46.324	42.156	43.670	43.932	32.884	26.253	42.078	66.778	494.023
2009	19.606	21.742	55.111	52.640	63.191	61.067	28.845	35.609	81.397	21.033	27.962	88.923	41.348	557.126
2010	20.095	31.172	51.769	54.946	59.377	60.896	61.345	61.764	63.814	73.404	73.962	148.369	51.267	760.913
2011	44.892	58.663	78.403	77.695	80.646	81.573	63.044	58.406	60.129	69.421	63.657	127.910	103.555	864.439
2012	29.545	41.324	64.884	62.949	70.863	71.067	62.304	58.148	69.629	59.938	71.710	115.400	70.869	777.761
2013	35.523	48.307	68.774	73.575	81.468	74.096	71.596	65.043	67.963	58.014	79.301	129.718	83.830	853.378
2014	32.670	35.021	47.581	53.305	58.121	60.163	59.907	60.199	66.531	66.573	80.621	80.621	67.691	701.313
2015	34.615	55.331	0	0	0	0	0	0	0	0	0	0	89.946	89.946

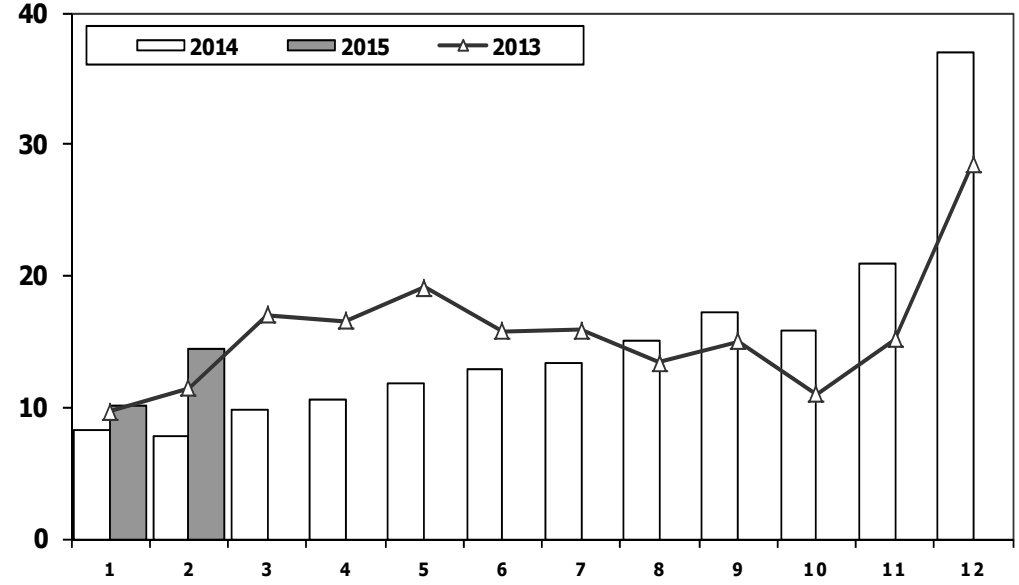
Hafif Ticari Araç Pazarının Analizi (x1000)

LCV Market Analysis (x1000)



Hafif Ticari Araç Pazarı (x1000)

LCV Total Market (Local + Imports) (x1000)

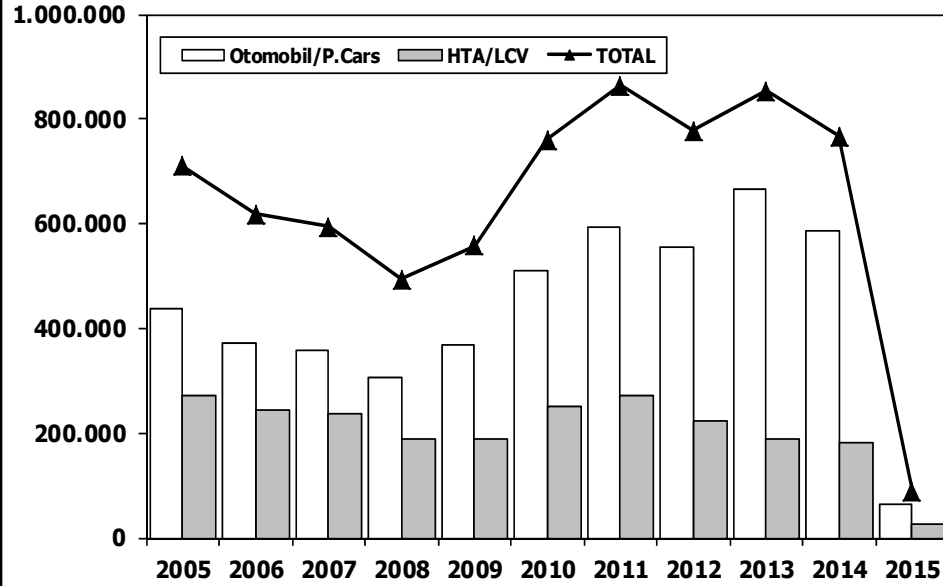


Aylar / Months	10 Yil Ort. 10 Yrs Avr. (x1000)	2015 (x1000)	%
1	10,0	10,1	1,4
2	12,5	14,5	15,7
Total	22,5	24,6	9,3

	1	2	3	4	5	6	7	8	9	10	11	12	2 Ay/Mo	Total
2005	9.152	14.754	22.578	20.638	28.877	19.896	22.046	25.363	25.544	21.678	23.523	37.762	23.906	271.811
2006	11.411	16.009	23.056	23.861	29.708	21.373	14.598	18.894	18.592	15.305	21.390	30.436	27.420	244.633
2007	9.931	11.972	17.554	17.162	18.871	18.548	19.244	22.089	18.919	20.156	23.670	39.181	21.903	237.297
2008	12.939	14.055	19.502	17.388	17.121	17.600	16.626	17.568	16.879	13.096	9.052	16.199	26.994	188.025
2009	6.433	7.250	14.489	16.438	19.003	20.048	12.208	13.072	29.235	7.205	10.181	31.745	13.683	187.307
2010	7.501	10.521	17.811	18.397	18.910	18.810	19.946	19.542	21.337	25.545	23.901	48.908	18.022	251.129
2011	15.024	19.659	24.380	23.860	24.344	24.859	19.526	19.531	20.165	21.913	18.706	38.953	34.683	270.920
2012	8.468	12.135	17.614	17.304	20.403	20.218	17.773	16.912	20.269	16.498	19.413	34.474	20.603	221.481
2013	9.688	11.493	16.989	16.576	19.085	15.806	15.884	13.432	15.038	11.029	15.184	28.519	21.181	188.723
2014	8.302	7.854	9.769	10.536	11.742	12.885	13.305	15.068	17.269	15.759	20.926	36.935	16.156	180.350
2015	10.117	14.514	0	0	0	0	0	0	0	0	0	0	24.631	24.631

Hafif Araç Pazarı (AYA < 3.5 Ton)

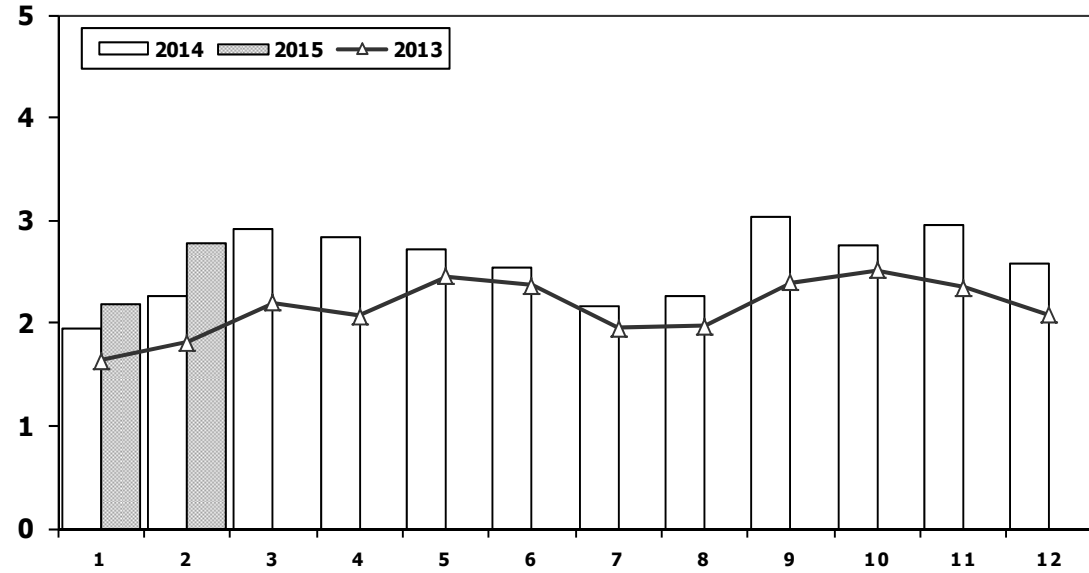
Light Vehicle Market (GVW < 3.5 Ton)



	2005	2006	2007	2008	2009	2010	2011	2012	2013	2014	2015
Otomobil/P.Cars	438.597	373.219	357.465	305.998	369.819	509.784	593.519	556.280	664.655	587.331	65.315
HTA/LCV	271.811	244.633	237.297	188.025	187.307	251.129	270.920	221.481	188.723	180.350	24.631
TOTAL	710.408	617.852	594.762	494.023	557.126	760.913	864.439	777.761	853.378	767.681	89.946
HTA/LCV (%)	38	40	40	38	34	33	31	28	22	23	27

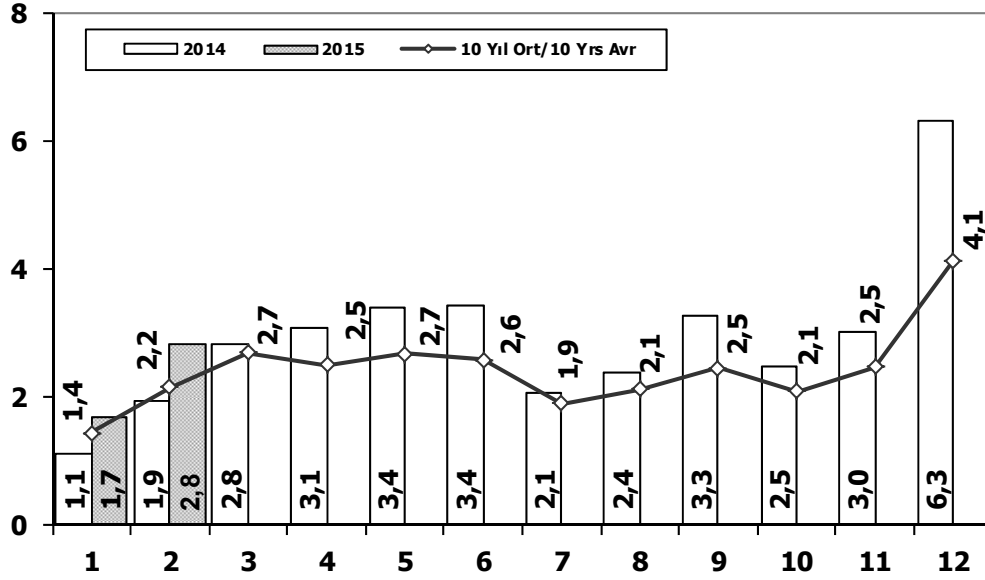
Traktör Pazarı (x1000)

F.Tractor Market (x1000)



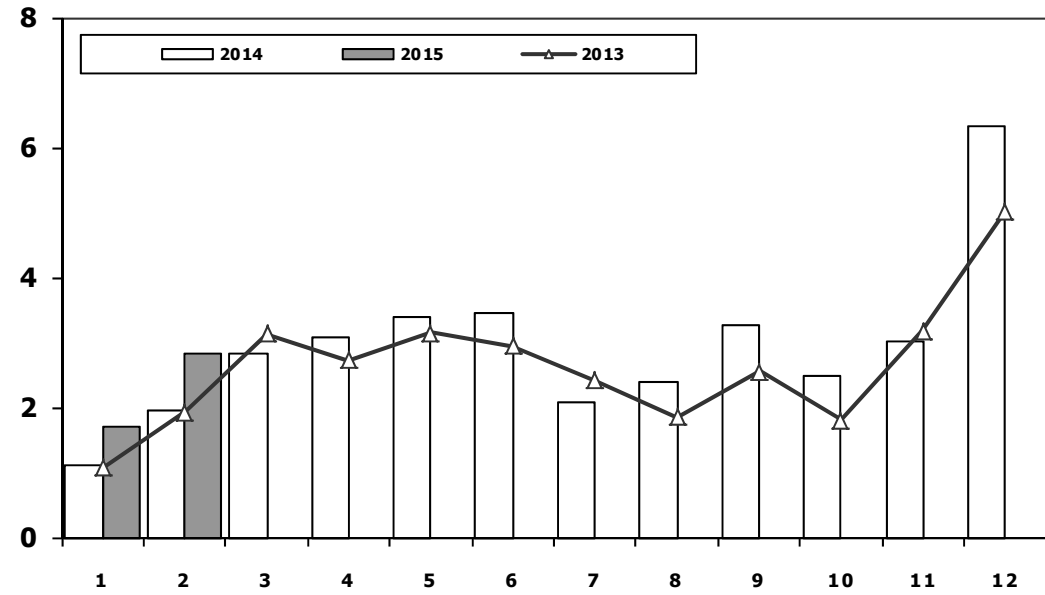
	1	2	3	4	5	6	7	8	9	10	11	12	2 Ay/Mo	Total
2005	1.026	1.636	2.001	2.599	2.569	2.780	2.148	2.819	2.567	2.477	2.297	2.089	2.662	27.008
2006	1.578	2.493	2.746	2.841	3.561	2.356	1.685	2.177	2.756	1.915	2.353	1.925	4.071	28.386
2007	1.812	1.778	2.063	2.107	2.266	1.853	1.653	2.065	2.372	2.239	2.231	1.602	3.590	24.041
2008	1.510	1.427	1.933	1.692	1.689	1.592	1.275	924	904	609	707	359	2.937	14.621
2009	267	344	388	638	759	828	741	534	586	765	725	715	611	7.290
2010	714	903	1.432	1.653	1.736	1.673	1.613	1.527	2.351	2.787	2.656	2.345	1.617	21.390
2011	2.458	2.610	3.105	3.403	3.847	3.599	2.952	1.559	2.957	2.823	2.603	2.807	5.068	34.723
2012	2.216	2.632	3.223	3.259	3.067	2.821	2.037	1.262	1.648	1.858	1.921	1.579	4.848	27.523
2013	1.633	1.817	2.196	2.070	2.455	2.370	1.955	1.969	2.396	2.510	2.343	2.080	3.450	25.794
2014	1.941	2.256	2.915	2.837	2.723	2.534	2.171	2.265	3.039	2.755	2.964	2.573	4.197	30.973
2015	2.187	2.767	0	0	0	0	0	0	0	0	0	0	4.954	4.954

Kamyon Pazarının Analizi (x1000) AYA > 5 Ton Truck Market Analysis (x1000) GVW > 5 Ton



Aylar / Months	10 Yil Ort. 10 Yrs Avr. (x1000)	2015 (x100)	%
1	1,4	1,7	17,2
2	2,2	2,8	31,7
Total	3,6	4,5	26,0

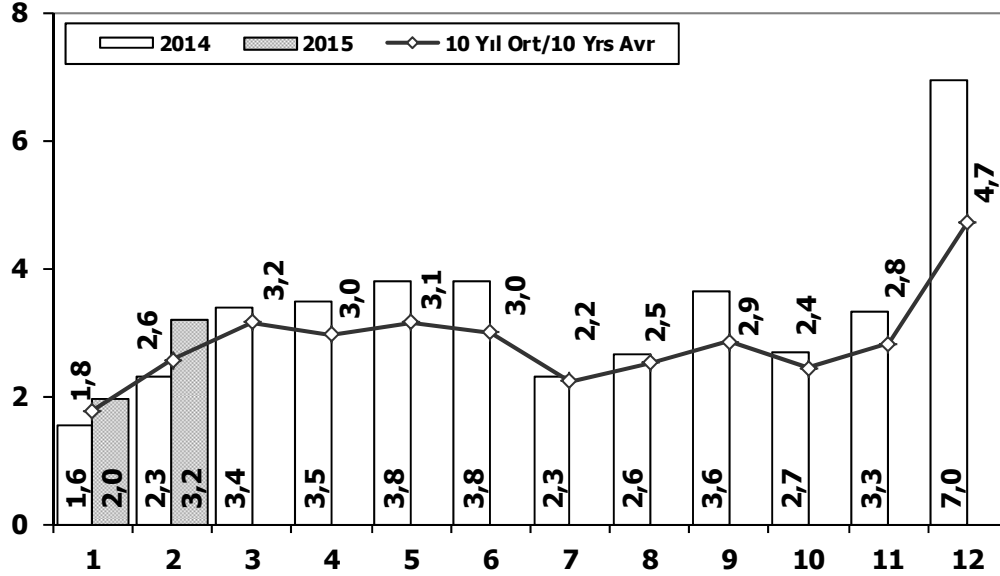
Kamyon Pazarı (x1000) AYA > 5 Ton Truck Market (x1000) GVW > 5 Ton



	1	2	3	4	5	6	7	8	9	10	11	12	2 Ay/Mo	Total
2005	1.693	2.186	3.288	3.484	3.413	3.147	2.504	4.028	4.043	3.708	3.918	6.570	3.879	41.982
2006	1.767	3.310	4.467	4.180	4.449	3.398	2.472	3.142	3.052	2.926	3.550	5.358	5.077	42.071
2007	1.554	2.055	3.065	2.940	2.865	2.613	2.372	3.145	2.988	2.886	3.258	4.444	3.609	34.185
2008	1.797	2.309	2.621	2.578	2.459	2.526	2.067	2.377	2.390	1.790	1.512	1.834	4.106	26.260
2009	771	759	1.034	1.342	1.355	1.651	1.156	1.205	1.780	866	981	2.015	1.530	14.915
2010	777	968	1.772	1.807	1.966	2.205	2.093	2.446	2.444	3.071	3.136	5.677	1.745	28.362
2011	2.552	3.292	4.418	3.754	3.803	3.749	1.996	2.478	3.081	2.774	3.108	5.787	5.844	40.792
2012	1.375	2.159	3.595	2.697	3.321	3.250	2.450	2.277	2.991	2.244	3.006	5.000	3.534	34.365
2013	1.077	1.931	3.127	2.720	3.145	2.951	2.411	1.845	2.554	1.801	3.173	5.025	3.008	31.760
2014	1.117	1.949	2.818	3.092	3.405	3.438	2.083	2.390	3.281	2.494	3.028	6.313	3.066	35.408
2015	1.697	2.840	0	0	0	0	0	0	0	0	0	0	4.537	4.537

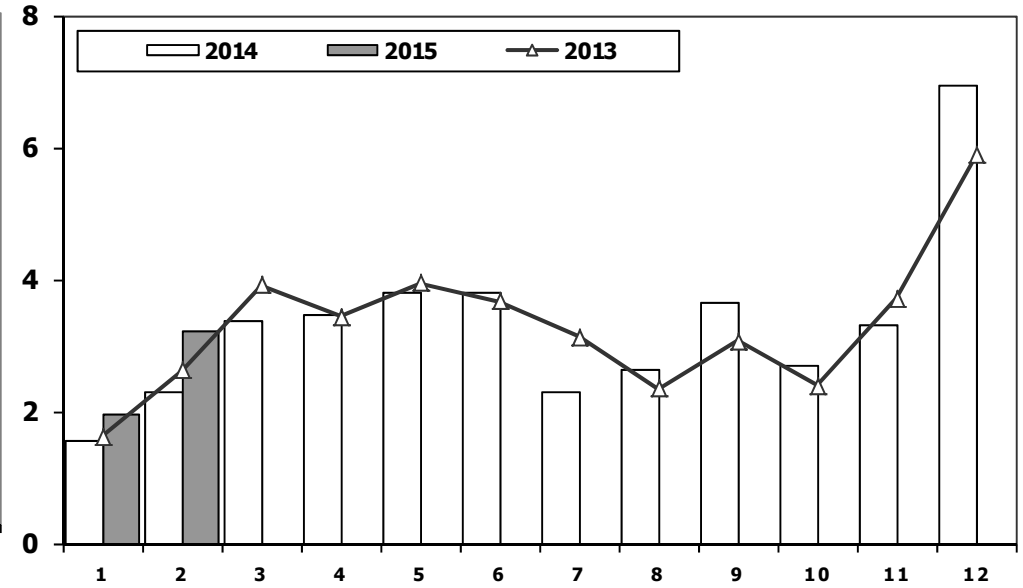
Ağır Ticari Araç Pazarının Analizi (x1000)

HCV Market Analysis (x1000)



Ağır Ticari Araç Pazarı (x1000)

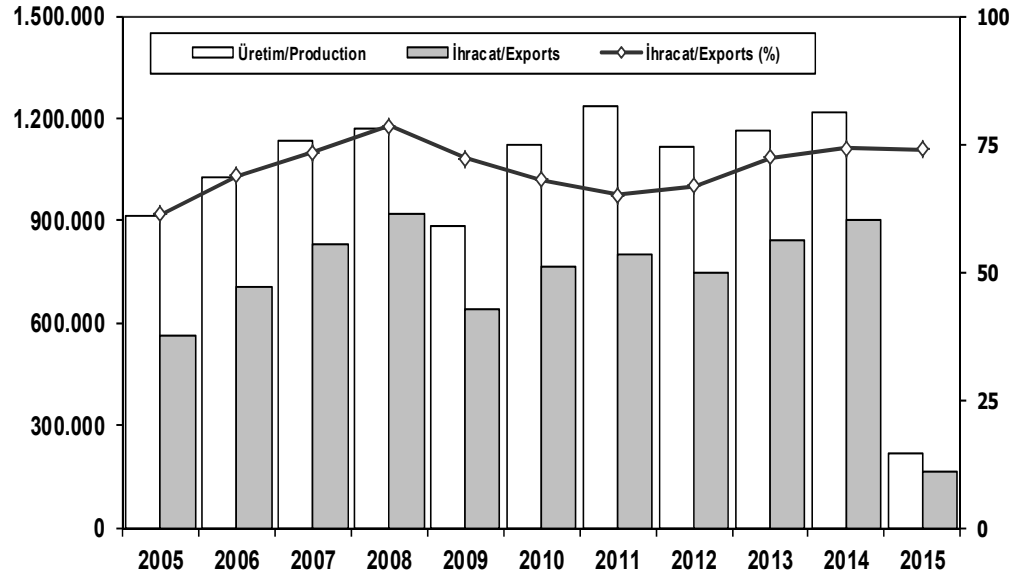
HCV Market (x1000)



Aylar / Months	10 Yıl Ort. 10 Yrs Avr. (x1000)	2015 (x1000)	%
1	1,8	2,0	10,3
2	2,6	3,2	24,8
Total	4,3	5,2	18,9

	1	2	3	4	5	6	7	8	9	10	11	12	2 Ay/Mo	Total
2005	1.940	2.525	3.795	4.029	4.026	3.583	2.832	4.636	4.626	4.153	4.355	7.629	4.465	48.129
2006	2.052	3.708	5.038	4.815	5.060	3.848	2.786	3.607	3.520	3.263	4.031	5.935	5.760	47.663
2007	1.833	2.518	3.598	3.267	3.317	2.987	2.627	3.613	3.497	3.333	3.704	5.150	4.351	39.444
2008	2.265	2.870	3.165	3.266	3.029	3.069	2.536	2.922	2.897	2.263	1.899	2.340	5.135	32.521
2009	1.025	1.104	1.420	1.786	1.696	2.035	1.401	1.483	2.006	1.084	1.240	2.463	2.129	18.743
2010	955	1.141	2.059	2.133	2.251	2.494	2.373	2.881	2.787	3.376	3.444	6.365	2.096	32.259
2011	2.766	3.685	4.930	4.376	4.447	4.290	2.320	2.972	3.514	3.219	3.538	6.371	6.451	46.428
2012	1.674	2.503	4.073	3.065	3.957	3.714	2.818	2.700	3.568	2.739	3.335	5.713	4.177	39.859
2013	1.617	2.624	3.914	3.440	3.953	3.675	3.130	2.340	3.074	2.385	3.716	5.878	4.241	39.746
2014	1.555	2.287	3.383	3.461	3.788	3.789	2.299	2.640	3.649	2.686	3.316	6.952	3.842	39.805
2015	1.952	3.201	0	0	0	0	0	0	0	0	0	0	5.153	5.153

İhracat/Üretim (2005-2015) Exports/Production (2005-2015)



	2005	2006	2007	2008	2009	2010	2011	2012	2013	2014	2015
Üretim/Production	916.062	1.026.427	1.132.951	1.171.917	884.466	1.124.982	1.234.637	1.115.233	1.166.043	1.218.848	219.556
İhracat/Exports	561.078	706.402	829.879	920.763	637.855	763.670	801.112	745.354	843.467	902.194	162.155
İhracat/Exports (%)	61	69	73	79	72	68	65	67	72	74	74

Taşıt Araçları İhracatı (2013-2015) Motor Vehicle Exports (2013-2015)

SEKTÖR/SECTOR	2013	2014	2014		2014/2015 (%)
			2 Ay-2 Mo		
OTOMOBİL/ P.Cars	484.504	581.993	82.474	99.470	21
TİCARİ ARAÇLAR/ CV	343.967	303.187	38.095	60.112	58
* Kamyonet/Pick-Up	300.765	269.995	34.654	52.288	51
* Minibüs/Minibus	34.664	26.458	2.705	6.904	155
* Kamyon/Truck	3.055	1.281	155	101	-35
* Midibüs/Midibus	985	824	74	71	-4
* Otobüs/Bus	4.498	4.629	507	748	48
TAŞIT ARAÇLARI /MV TOTAL	828.471	885.180	120.569	159.582	32
TRAKTÖR/F.TRACTOR	14.996	17.014	2.196	2.573	17
TOTAL	843.467	902.194	122.765	162.155	32

Otomotiv Ana ve Yan Sanayii İhracatı (ABD \$) CBU and CKD Exports - \$

SEKTÖR/SECTOR	2012 Toplam (Total)	2013 Toplam (Total)	2014 Toplam (Total)	2014		2015/2014 (%)
				2 Ay (2 Months)		
Toplam Yan Sanayi/Total Component Industry	8.215.954.295	9.065.017.539	9.508.032.776	1.626.637.660	1.393.789.662	-14,3
İç ve Dış Lastik / Tyres	1.199.572.093	1.130.005.892	1.126.947.745	214.717.125	159.493.603	-25,7
Emniyet Camı / Safety Glasses	120.641.763	135.230.310	143.231.168	26.265.339	20.932.650	-20,3
Motor (Engine)	272.085.582	319.294.885	171.893.752	31.313.731	22.410.285	-28,4
Akümülatör / Batteries	250.104.807	306.451.449	289.150.764	47.513.650	37.380.361	-21,3
Diğer Aksam ve Parça / Spare Parts&Components	6.373.550.048	7.174.035.002	7.776.809.346	1.306.827.816	1.153.572.763	-11,7
Toplam Ana Sanayi/Total Vehicle Industry	11.100.457.162	12.491.591.365	13.272.198.027	1.867.876.965	2.114.577.036	13,2
Otobüs / Bus	855.424.304	937.790.963	985.983.007	111.680.449	137.480.862	23,1
Midibüs-Minibüs / Minibus- Minibus	161.806.275	147.769.644	97.685.509	5.841.154	26.475.751	353,3
Otomobil (P. Cars)	6.068.045.119	6.855.475.590	7.270.836.596	1.090.231.627	1.142.709.913	4,8
Kamyon-Kamyonet/HCV-LCV	3.433.310.999	3.918.798.755	4.201.921.030	562.653.410	701.647.905	24,7
Çekici/Truck-Tractor	71.336.635	218.385.732	252.416.256	36.177.550	47.270.837	30,7
Römork ve Yarı Römork/Trailer-Semi Trailer	195.093.537	77.907.407	38.396.525	5.499.308	5.337.038	-3,0
Tarım Traktörü/Farm Tractor	315.440.294	335.463.275	424.959.103	55.793.468	53.654.730	-3,8
Toplam/Total	19.316.411.457	21.556.608.904	22.780.230.802	3.494.514.626	3.508.366.699	0,4

Kaynak: Otomotiv Endüstrisi İhracatçıları Birliği

Firma Bazında İhracat (Adet)
Export Of member Companies (Unit)

FİRMALAR Companies	2013	2014	Ocak-Şubat 2 Months	
			2014	2015
			OYAK RENAULT	266.508
FORD OTOSAN	208.722	187.921	18.792	39.140
HYUNDAI ASSAN	85.500	179.793	21.625	28.850
TOFAŞ	160.309	142.234	22.683	28.548
TOYOTA	86.908	109.517	19.173	15.386
TÜRK TRAKTÖR	14.402	15.866	2.064	2.452
M. BENZ TÜRK	5.331	3.438	343	546
MAN TÜRKİYE	898	937	156	260
HATTAT TARIM	594	1.148	132	121
HONDA TÜRKİYE	2.121	1.560	210	89
OTOKAR	620	580	6	47
A.I.O.S.	770	748	72	24
TEMSA GLOBAL	663	423	72	23
KARSAN	10.120	37	6	18
BMC	341	1	1	0
GENEL TOPLAM	843.807	902.195	122.766	162.155

Kaynak: OSD

Sektör Bazında İhracat (\$)
Exports on Sectorial Basis

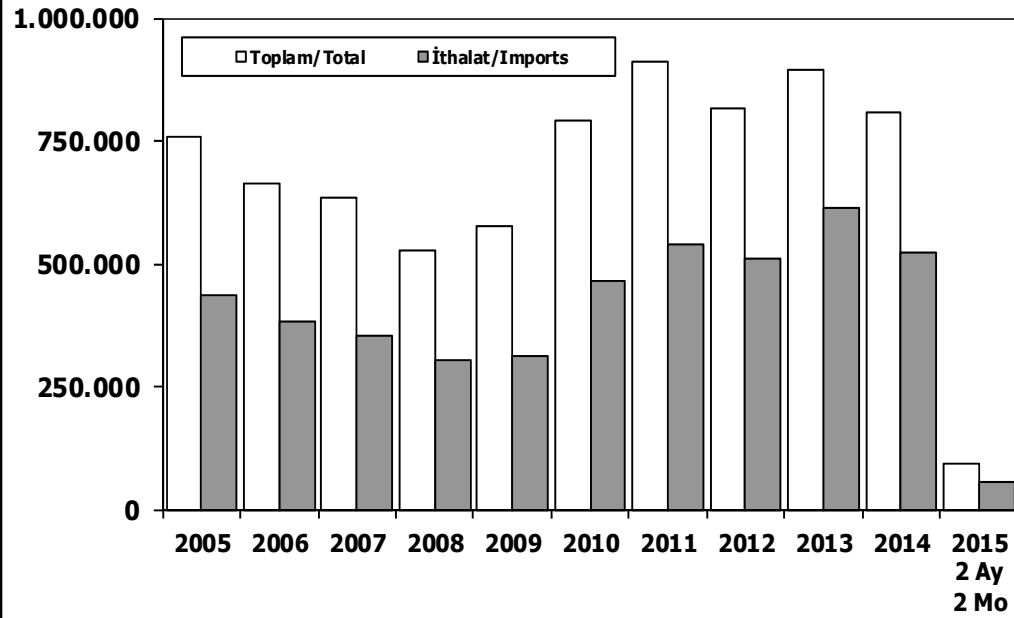
SEKTÖRLER	ŞUBAT				OCAK-ŞUBAT			
	2014	2015	2015/2014 (%)	2015 Pay (%)	2014	2015	2015/2014 (%)	2015 Pay (%)
	1 Otomotiv Endüstrisi	1.832.640	1.705.352	-6,9	16,2	3.418.598	3.433.868	0,4
2 Hazır giyim ve Konfeksiyon	1.485.368	1.267.909	-14,6	12,1	3.072.045	2.656.979	-13,5	11,6
3 Kimyevi Maddeler ve Mamulleri	1.444.414	1.175.736	-18,6	11,2	2.838.585	2.370.542	-16,5	10,4
4 Çelik	1.189.081	943.833	-20,6	9,0	2.294.554	1.804.473	-21,4	7,9
5 Elektrik Elektronik ve Hizmet	921.008	833.312	-9,5	7,9	1.823.961	1.566.920	-14,1	6,9
6 İhracatçı Birlikleri Kaydından Muaf İhracat	**	**	**	**	423.323	1.547.800	265,6	6,8
7 Tekstil ve Hammaddeleri	715.678	610.593	-14,7	5,8	1.483.580	1.260.236	-15,1	5,5
8 Hububat, Bakliyat, Yağlı Tohumlar ve Mam.	556.284	495.037	-11,0	4,7	1.170.334	1.062.430	-9,2	4,7
9 Demir ve Demir Dışı Metaller	567.771	474.416	-16,4	4,5	1.159.412	964.473	-16,8	4,2
10 Makine ve Aksamları	471.699	435.803	-7,6	4,2	948.886	902.250	-4,9	4,0
11 Mobilya, Kağıt ve Orman Ürünleri	344.101	302.873	-12,0	2,9	705.476	619.900	-12,1	2,7
12 İklîmlendirme Sanayii	355.764	296.106	-16,8	2,8	685.559	571.120	-16,7	2,5
13 Madencilik Ürünleri	327.056	282.004	-13,8	2,7	727.527	559.139	-23,1	2,4
14 Fındık ve Mamulleri	182.753	233.628	27,8	2,2	336.549	481.583	43,1	2,1
15 Mücevher	181.237	146.075	-19,4	1,4	375.463	433.753	15,5	1,9
16 Çimento Cam Seramik ve Toprak Ürünleri	245.732	214.928	-12,5	2,0	489.282	416.200	-14,9	1,8
17 Yaş Meyve ve Sebze	200.366	156.403	-21,9	1,5	419.739	375.154	-10,6	1,6
18 Su Ürünleri ve Hayvansal Mamuller	185.582	167.554	-9,7	1,6	395.152	340.211	-13,9	1,5
19 Halı	177.088	147.410	-16,8	1,4	355.445	291.253	-18,1	1,3
20 Deri ve Deri Mamulleri	144.819	116.371	-19,6	1,1	268.588	229.471	-14,6	1,0
21 Savunma ve Havacılık Sanayii	107.443	97.081	-9,6	0,9	213.566	196.593	-7,9	0,9
22 Kuru Meyve ve Mamulleri	111.650	94.447	-15,4	0,9	227.668	192.476	-15,5	0,8
23 Meyve Sebze Mamulleri	112.348	98.904	-12,0	0,9	223.847	192.197	-14,1	0,8
24 Tütün ve Mamulleri	69.920	87.710	25,4	0,8	179.497	172.297	-4,0	0,8
25 Gemi ve Yat	89.237	77.875	-12,7	0,7	143.708	121.851	-15,2	0,5
26 Zeytin ve Zeytinyağı	23.262	19.168	-17,6	0,2	47.696	36.035	-24,4	0,2
27 Süs Bitkileri	9.167	8.903	-2,9	0,1	16.526	15.233	-7,8	0,1
28 Diğer Sanayi Ürünleri	8.787	5.492	-37,5	0,1	15.748	11.266	-28,5	0,0
TOPLAM	12.060.255	10.494.923	-13,0	100	24.460.311	22.825.703	-6,7	100

Kaynak: TİM

First 3 Sectors:

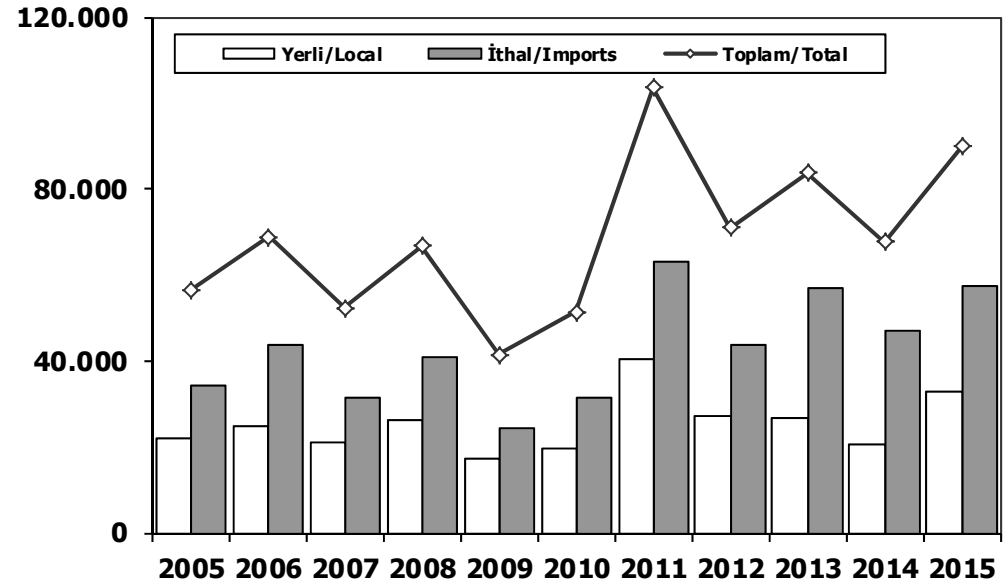
- 1- Motor Vehicle and Component Industry
- 2- Ready Wear and Confection
- 3-Chemical Articles and Products

Toplam Pazar (Otomobil+T.Araç) Total Market (P.Cars+C.V)



	2005	2006	2007	2008	2009	2010	2011	2012	2013	2014	2014 2 Ay 2 Mo	2015 2 Ay 2 Mo
Toplam/Total	758.537	665.515	634.206	526.544	575.869	793.172	910.867	817.620	893.124	807.486	71.533	95.099
İthalat/Imports	436.033	382.460	355.752	306.087	313.921	465.408	538.532	511.694	615.609	522.842	47.766	58.626
İthalat/Imports (%)	57	57	56	58	55	59	59	63	69	65	67	62

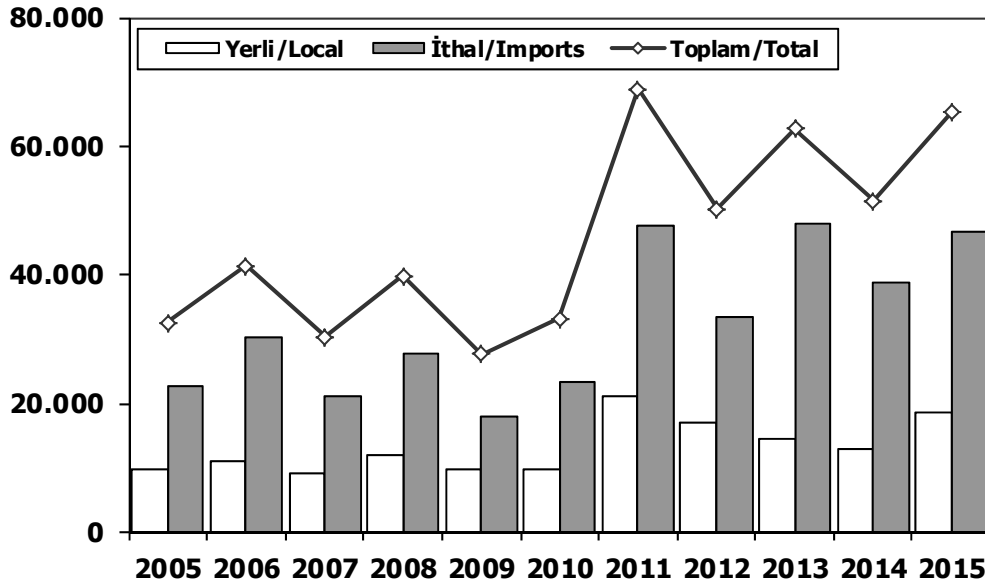
Hafif Araçlar Pazarı (2005-2015) LV Market (2005-2015)



	2005	2006	2007	2008	2009	2010	2011	2012	2013	2014	2015
Yerli/Local	22.038	24.981	21.077	26.031	17.103	19.756	40.483	27.386	26.842	20.779	32.700
İthal/Imports	34.475	43.874	31.224	40.747	24.245	31.511	63.072	43.483	56.988	46.912	57.246
Toplam/Total	56.513	68.855	52.301	66.778	41.348	51.267	103.555	70.869	83.830	67.691	89.946
İthalat/Imports (%)	61	64	60	61	59	61	61	61	68	69	64

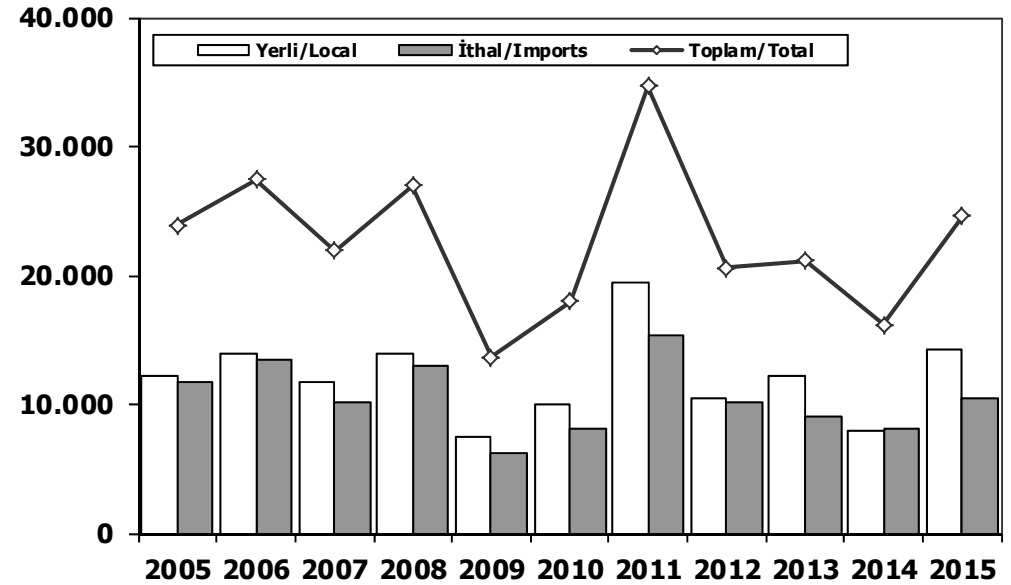
Otomobil Pazarı (2005-2015 Ocak-Şubat)

P.Cars Market (2005-2015 February-February)



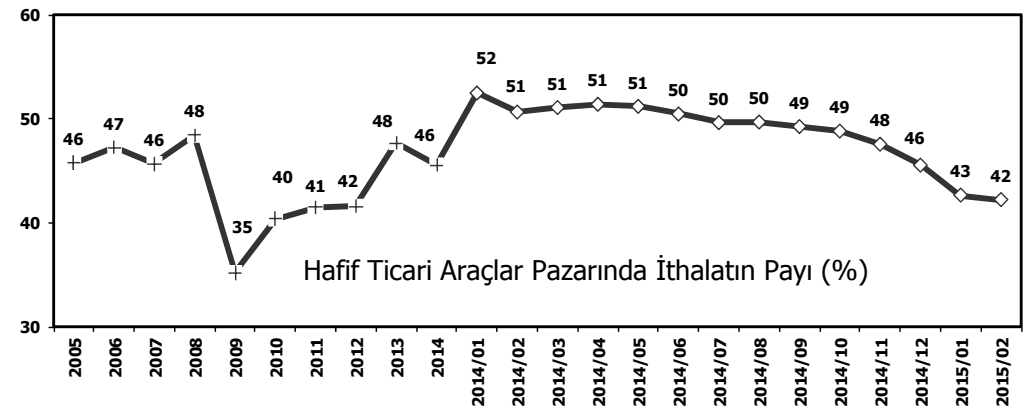
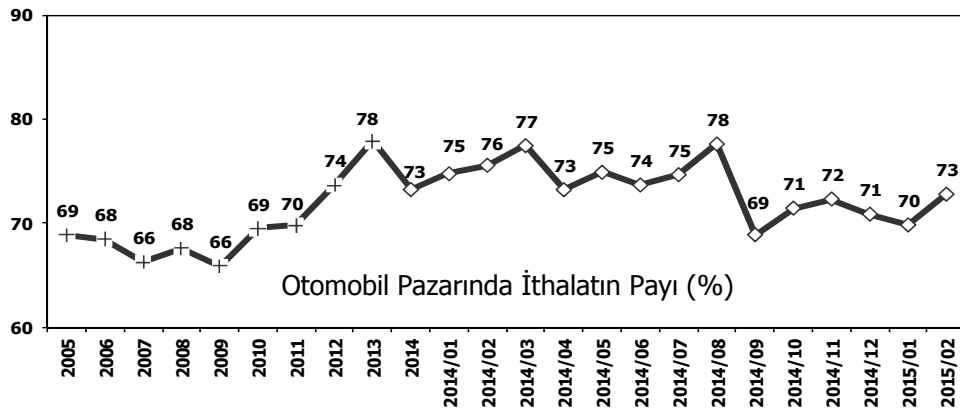
Hafif Ticari Araçlar Pazarı (2005-2015 Ocak-Şubat)

Light Commercial Vehicle Market (2005-2015 February-February)



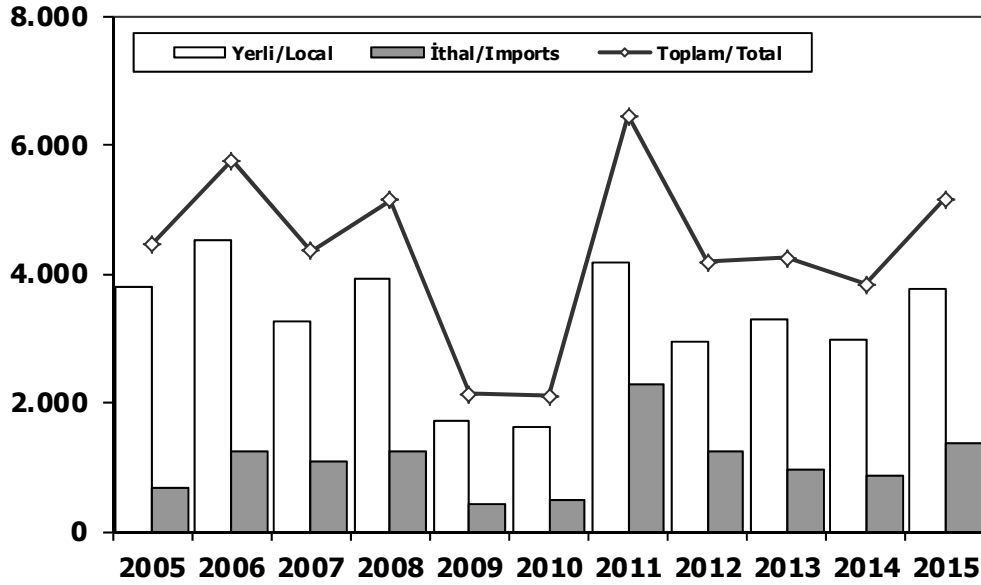
	2005	2006	2007	2008	2009	2010	2011	2012	2013	2014	2015
Yerli/Local	9.861	11.080	9.266	12.050	9.687	9.828	21.103	16.911	14.658	12.805	18.514
İthal/Imports	22.746	30.355	21.132	27.734	17.978	23.417	47.769	33.355	47.991	38.730	46.801
Toplam/Total	32.607	41.435	30.398	39.784	27.665	33.245	68.872	50.266	62.649	51.535	65.315
İthalat/Imports (%)	70	73	70	70	65	70	69	66	77	75	72

	2005	2006	2007	2008	2009	2010	2011	2012	2013	2014	2015
Yerli/Local	12.177	13.901	11.811	13.981	7.416	9.928	19.380	10.475	12.184	7.974	14.186
İthal/Imports	11.729	13.519	10.092	13.013	6.267	8.094	15.303	10.128	8.997	8.182	10.445
Toplam/Total	23.906	27.420	21.903	26.994	13.683	18.022	34.683	20.603	21.181	16.156	24.631
İthalat/Imports (%)	49	49	46	48	46	45	44	49	42	51	42



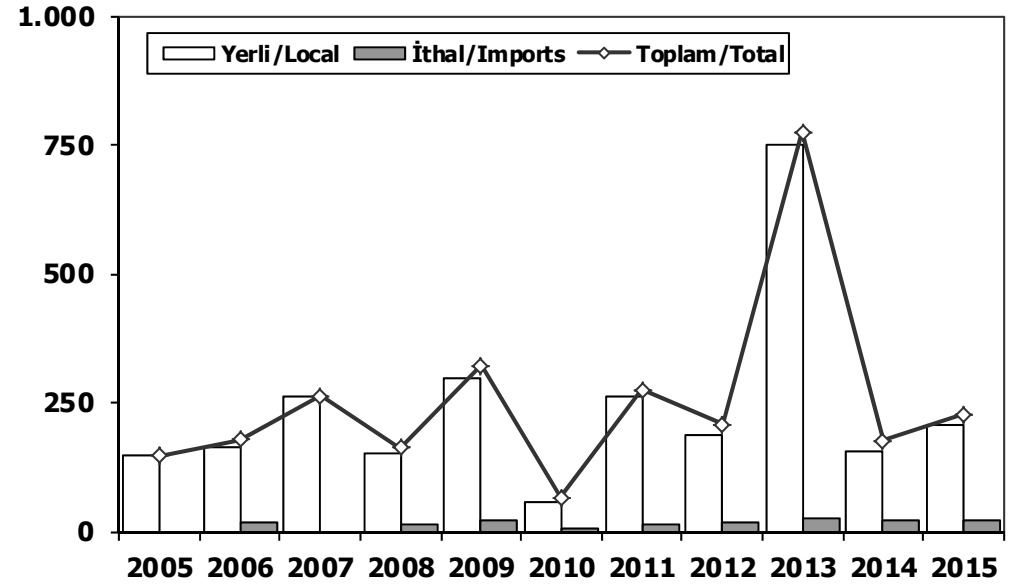
Ağır Ticari Araçlar Pazarı (2005-2015 Ocak-Şubat)

HCV Market (2005-2015 February-February)



Otobüs Pazarı (2005-2015 Ocak-Şubat)

Bus Market (2005-2015 February-February)

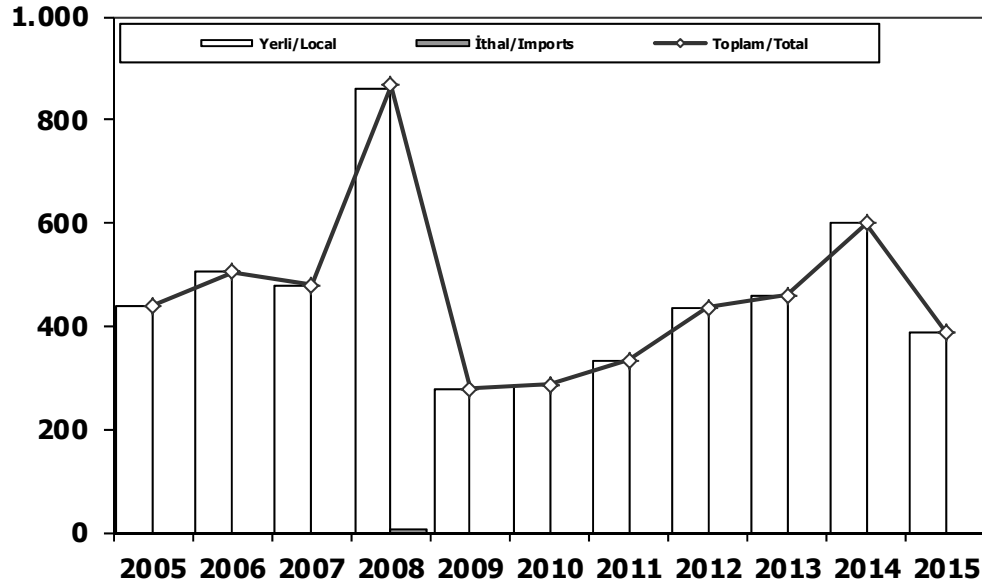


	2005	2006	2007	2008	2009	2010	2011	2012	2013	2014	2015
Yerli/Local	3.796	4.505	3.257	3.906	1.712	1.622	4.183	2.935	3.286	2.988	3.773
İthal/Imports	669	1.255	1.094	1.229	417	474	2.268	1.242	955	854	1.380
Toplam/Total	4.465	5.760	4.351	5.135	2.129	2.096	6.451	4.177	4.241	3.842	5.153
İthalat/Imports (%)	15	22	25	24	20	23	35	30	23	22	27

	2005	2006	2007	2008	2009	2010	2011	2012	2013	2014	2015
Yerli/Local	146	163	263	150	298	58	262	188	749	156	207
İthal/Imports	0	16	0	12	23	7	12	19	25	20	20
Toplam/Total	146	179	263	162	321	65	274	207	774	176	227
İthalat/Imports (%)	0	9	0	7	7	11	4	9	3	11	9

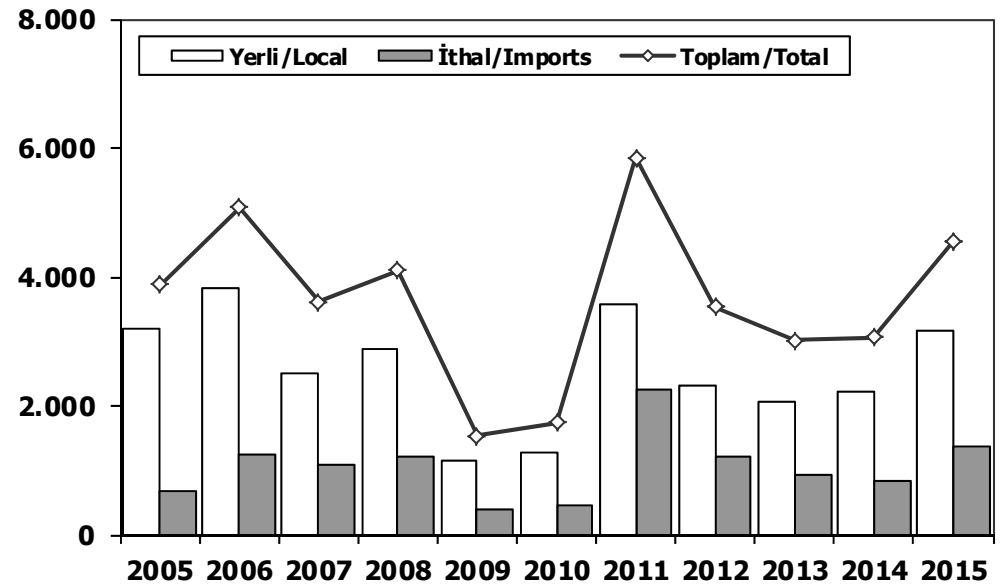


Midibüs Pazarı (2005-2015 Ocak-Şubat) (7-9 mt / 25-35 Kişilik) Midibus (2005-2015 February-February) Market (7-9 mt / 25-35 Passengers)



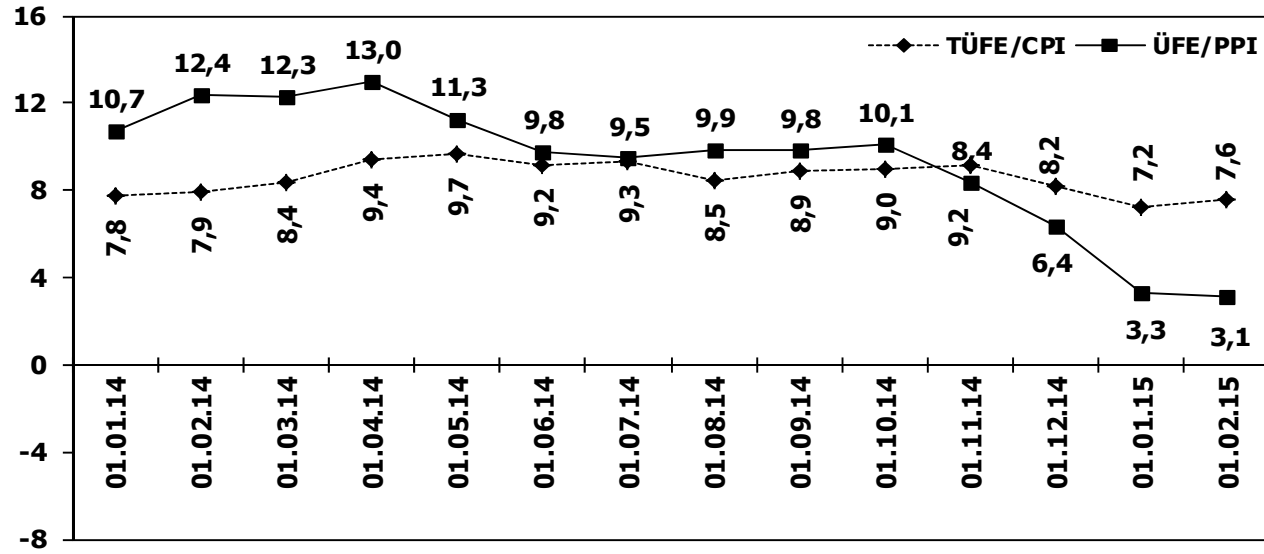
	2005	2006	2007	2008	2009	2010	2011	2012	2013	2014	2015
Yerli/Local	440	504	479	861	278	286	333	436	459	600	389
İthal/Imports	0	0	0	6	0	0	0	0	0	0	0
Toplam/Total	440	504	479	867	278	286	333	436	459	600	389
İthalat/Imports (%)	0	0	0	1	0	0	0	0	0	0	0

Kamyon Pazarı (2005-2015 Ocak-Şubat) Truck Market (2005-2015 February-February)

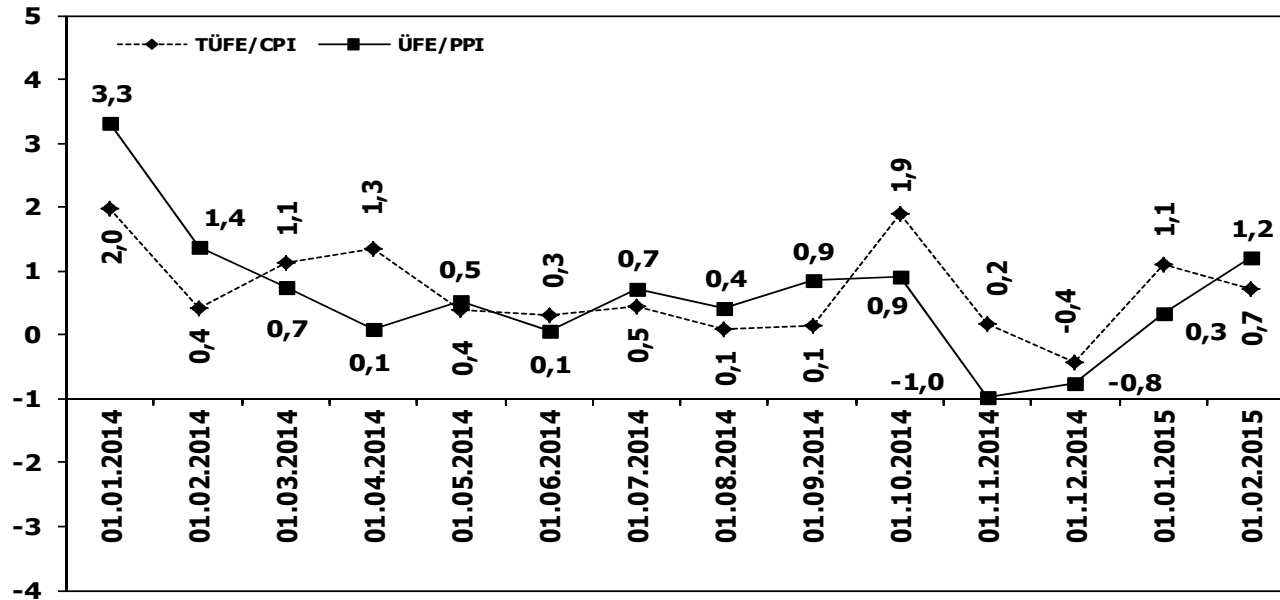


	2005	2006	2007	2008	2009	2010	2011	2012	2013	2014	2015
Yerli/Local	3.210	3.838	2.515	2.895	1.136	1.278	3.588	2.311	2.078	2.232	3.177
İthal/Imports	669	1.239	1.094	1.211	394	467	2.256	1.223	930	834	1.360
Toplam/Total	3.879	5.077	3.609	4.106	1.530	1.745	5.844	3.534	3.008	3.066	4.537
İthalat/Imports (%)	17	24	30	29	26	27	39	35	31	27	30

TÜFE ve ÜFE'nin Yıllık Değişimi (%) CPI and PPI Yearly Changes (%)



TÜFE ve ÜFE'nin Aylık Değişimi (%) CPI and PPI Monthly Changes (%)



2015 Yılı İthal Hafif Araç Satışları 2015 Light Vehicles Import Sales

2015 YILI İTHAL OTOMOBİL SATIŞLARI / P.Cars Import 2015

	2014 TOPLAMI 2014 Total	1	2	3	4	5	6	7	8	9	10	11	12	2015 TOPLAMI 2015 Total
VOLKSWAGEN	84.646	4.491	6.942											11.433
OPEL	39.255	952	2.239											3.191
FORD	35.682	1.101	2.782											3.883
DACIA	27.897	1.709	2.289											3.998
B.M.W	26.174	1.219	1.536											2.755
RENAULT	25.572	653	1.309											1.962
MERCEDES	23.100	417	1.384											1.801
HYUNDAI	21.685	784	1.011											1.795
NISSAN	19.422	949	1.372											2.321
AUDI	17.809	610	1.103											1.713
PEUGEOT	17.026	846	1.110											1.956
SKODA	14.537	515	1.568											2.083
CITROEN	14.389	683	941											1.624
SEAT	12.697	164	1.103											1.267
KIA	11.017	330	676											1.006
TOYOTA	10.146	327	535											862
FIAT	6.179	248	377											625
VOLVO	6.060	295	290											585
HONDA	3.269	98	241											339
JEEP	1.960	239	281											520
SUBARU	1.402	65	40											105
MAZDA	1.291	27	80											107
LAND ROVER	1.207	31	87											118
MINI (İngiliz)	1.071	21	47											68
MITSUBISHI	1.159	64	64											128
ALFA ROMEO	967	34	59											93
SUZUKI	958	27	17											44
PROTON	707	55	40											95
PORSCHE	588	45	48											93
CHEVROLET	572	0	0											0
SSANGYONG	531	44	21											65
CHERY	325	26	38											64
LANCIA	210	0	2											2
TATA	126	21	24											45
GEELY	95	4	7											11
MASERATI	83	2	2											4
SMART	76	4	3											7
JAGUAR	52	0	25											25
BENTLEY	21	0	4											4
FERRARI	11	0	0											0
INFINITI	6	1	1											2
LAMBORGHINI	2	1	1											2
TOPLAM	429.982	17.102	29.699	0	0	0	0	0	0	0	0	0	0	46.801

2015 YILI İTHAL HAFİF TİCARİ ARAÇ SATIŞLARI / Light Commercial Vehicles Import 2015

	2014 TOPLAMI 2014 Total	1	2	3	4	5	6	7	8	9	10	11	12	2015 TOPLAMI 2015 Total
VOLKSWAGEN	24.001	1.336	2.575											3.911
RENAULT	8.716	501	673											1.174
MERCEDES	8.028	391	424											815
FIAT	7.664	347	491											838
DACIA	6.572	250	242											492
CITROEN	6.048	269	392											661
PEUGEOT	5.832	303	403											706
MITSUBISHI	4.188	390	324											714
IVECO	2.524	117	139											256
KIA	2.057	147	221											368
ISUZU	1.728	27	19											46
TOYOTA	1.670	73	45											118
HYUNDAI	1.565	89	104											193
SSANGYONG	626	31	34											65
FORD	333	22	22											44
TATA	290	22	21											43
NISSAN	275	1	0											1
MAZDA	9	0	0											0
TOPLAM	82.126	4.316	6.129	0	0	0	0	0	0	0	0	0	0	10.445