



OTOMOTİV SANAYİİ DERNEĐİ  
AUTOMOTIVE MANUFACTURERS ASSOCIATION

# AYLIK RAPOR

## Automotive Industry Monthly Report

Mart / March 2015

- **Üretim**/Production
- **Satış**/Sales
- **İthalat**/Imports
- **İhracat**/Exports

OSD "OICA" Üyesidir



OSD is a Member of "OICA"

## 2015 Mart Ayı Özeti / 2015 March Summary

KONULAR/ MATTERS		MART / MARCH			3 AY/ 3 MONTHS			SON 12 AYLIK / YoY		
		2014	2015	2015/2014 (%)	2014	2015	2015/2014 (%)	2014	2015	2015/2014 (%)
Üretim/Production	Toplam/ Total	97.308	123.119	27	255.490	334.705	31	1.103.878	1.249.660	13
	Otomobil/ P.Cars	61.203	72.781	19	166.459	198.433	19	657.637	765.413	16
Pazar/Market	Toplam/ Total	50.964	89.104	75	122.497	184.214	50	854.862	869.203	2
	Otomobil/ P.Cars	37.812	61.676	63	89.347	126.991	42	639.568	624.975	-2
İthalat/ Import	Toplam/ Total	35.239	55.851	58	83.005	114.337	38	589.571	554.174	-6
	Otomobil/ P.Cars	29.275	45.445	55	68.005	92.246	36	495.944	454.223	-8
İhracat/ Export	Toplam/ Total	82.246	89.956	9	202.815	249.838	23	825.913	932.203	13
	Otomobil/ P.Cars	53.966	58.872	9	136.440	158.642	16	510.200	604.195	18
İhracat / Export (\$)	Toplam/ Total **	2.159.683.061	1.810.916.735	-16	5.654.197.687	5.318.474.836	-6	22.057.405.816	22.464.016.333	2
	Otomobil/ P.Cars	717.237.020	616.540.718	-14	1.807.468.647	1.759.127.265	-3	6.999.056.567	7.219.084.893	3

PARAMETRELER / PARAMETERS		MART / MARCH			3 AY/ 3 MONTHS			SON 12 AYLIK / YoY		
		2014	2015	2015/2014 (%)	2014	2015	2015/2014 (%)	2014	2015	2015/2014 (%)
ÜFE/ PPI		0,74	1,05	**	5,52	2,60	**	12,31	3,41	**
TÜFE/ CPI		1,13	1,19	**	3,57	3,03	**	8,39	7,61	**
Sanayi Endeksi/ Industry Index		1,03	0,98	**	6,29	2,84	**	13,16	3,93	**
\$ (*)		2,1596	2,6116	21	2,2149	2,5111	13	2,0385	2,2652	11
EURO (*)		2,9753	2,8055	-6	3,0330	2,7854	-8	2,7346	2,8294	3
Japon Yeni (*)		2,0991	2,1634	3	2,1616	2,0977	-3	2,0175	2,0398	1

(\*) Ortalama Değerler / Average Values

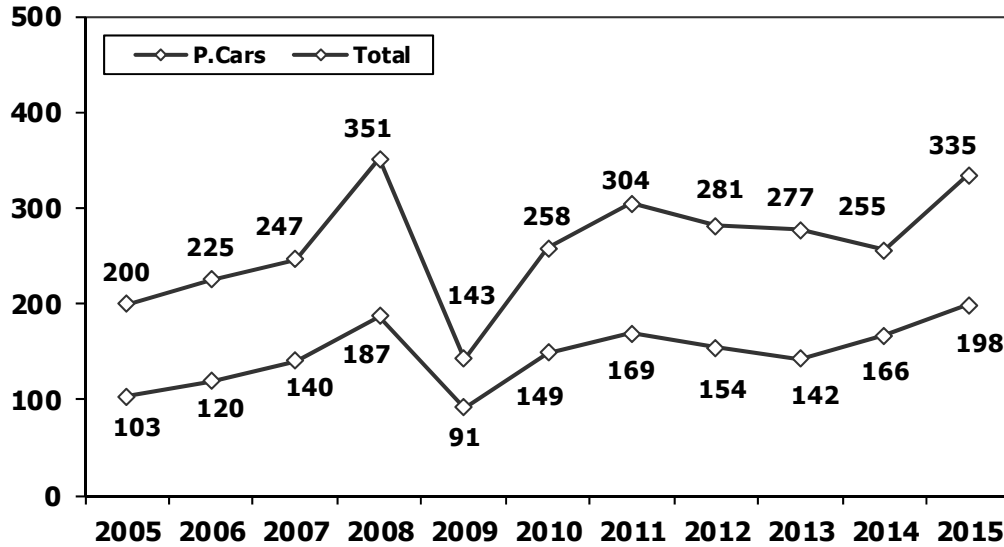
(\*\*) Toplam Sanayi / Total Industry Including Components

## 2014/2015 Yılları Üretim 2014/2015 Production

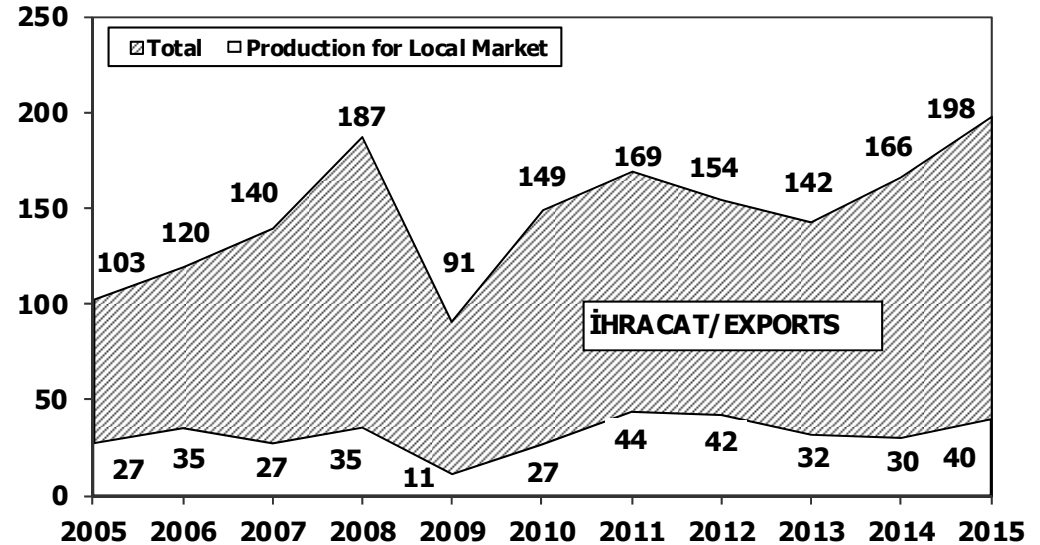
K.KAMYON : AYA 3.5-12 Ton (L.Truck:GWV 3.5-12 Ton)  
B.KAMYON : AYA 12 Ton'dan Büyük (M.Truck:GWV 12 Ton And Up)

TİPLER	MART AYI ÜRETİMİ March Production		3 AYLIK ÜRETİM 3 Months Production		DEĞİŞİM % Percent Change %	
	2014	2015	2014	2015	MART March	3 AY 3 Months
<b>OTOMOBİL - Pass.Car</b>	<b>61.203</b>	<b>72.781</b>	<b>166.459</b>	<b>198.433</b>	<b>19</b>	<b>19</b>
<b>TİCARİ ARAÇLAR - Commercial Vehicles</b>	<b>36.105</b>	<b>50.338</b>	<b>89.031</b>	<b>136.272</b>	<b>39</b>	<b>53</b>
* B. KAMYON - M. Truck	2.019	2.801	5.659	7.647	39	35
* K. KAMYON - L. Truck	289	299	856	777	3	-9
* KAMYONET - Pick Up	29.849	38.597	73.069	107.951	29	48
* OTOBÜS - Bus	654	753	1.727	1.990	15	15
* MİNİBÜS - Minibus	2.762	7.301	6.053	16.313	164	170
* MİDİBÜS - Midibus	532	587	1.667	1.594	10	-4
<b>TAŞIT ARAÇLARI TOPLAM - MV Total</b>	<b>97.308</b>	<b>123.119</b>	<b>255.490</b>	<b>334.705</b>	<b>27</b>	<b>31</b>
<b>TRAKTÖR - F.Tractor</b>	<b>4.456</b>	<b>4.641</b>	<b>11.552</b>	<b>12.612</b>	<b>4</b>	<b>9</b>
<b>GENEL TOPLAM - Grand Total</b>	<b>101.764</b>	<b>127.760</b>	<b>267.042</b>	<b>347.317</b>	<b>26</b>	<b>30</b>

**Toplam Üretim ve Otomobil Üretimi** (x1000) (Ocak-Mart)  
Total & P.Cars Production (x1000) (January- March)



**Otomobil Üretimi ve İhracat** (x1000) (Ocak-Mart)  
P.Cars Production & Exports (x1000) (January- March)





### 3 Aylık Üretim (3 Months Production)

FİRMALAR Companies	OTOMOBİL Pass.Car	%	K.KAMYON L.Truck	%	B.KAMYON Mid.Truck	%	KAMYONET Pick Up	%	OTOBÜS Bus	%	MINİBÜS Mini-Bus	%	MİDİBÜS Midi-Bus	%	TRAKTÖR F.Tractor	%	TOPLAM Totals
A.I.O.S.	0	0	735	95	0	0	888	1	60	3	0	0	448	28	0	0	2.131
FORD OTOSAN	4.260	2	0	0	2.553	33	59.236	55	0	0	15.918	98	0	0	0	0	81.967
HATTAT TARIM	0	0	0	0	0	0	0	0	0	0	0	0	0	0	582	5	582
HONDA TÜRKİYE	3.045	2	0	0	0	0	0	0	0	0	0	0	0	0	0	0	3.045
HYUNDAI ASSAN	53.350	27	0	0	0	0	0	0	0	0	0	0	0	0	0	0	53.350
KARSAN	0	0	0	0	8	0	4	0	4	0	395	2	105	7	0	0	516
M. BENZ TÜRK	0	0	0	0	5.086	67	0	0	983	49	0	0	0	0	0	0	6.069
MANTÜRKİYE	0	0	0	0	0	0	0	0	507	25	0	0	0	0	0	0	507
OTOKAR	0	0	42	5	0	0	27	0	77	4	0	0	666	42	0	0	812
OYAK RENAULT	90.947	46	0	0	0	0	0	0	0	0	0	0	0	0	0	0	90.947
TEMSA GLOBAL	0	0	0	0	0	0	0	0	359	18	0	0	375	24	0	0	734
TOFAŞ	17.265	9	0	0	0	0	47.796	44	0	0	0	0	0	0	0	0	65.061
TOYOTA	29.566	15	0	0	0	0	0	0	0	0	0	0	0	0	0	0	29.566
TÜRK TRAKTÖR	0	0	0	0	0	0	0	0	0	0	0	0	0	0	12.030	95	12.030
<b>TOPLAM</b>	<b>198.433</b>	<b>100</b>	<b>777</b>	<b>100</b>	<b>7.647</b>	<b>100</b>	<b>107.951</b>	<b>100</b>	<b>1.990</b>	<b>100</b>	<b>16.313</b>	<b>100</b>	<b>1.594</b>	<b>100</b>	<b>12.612</b>	<b>100</b>	<b>347.317</b>

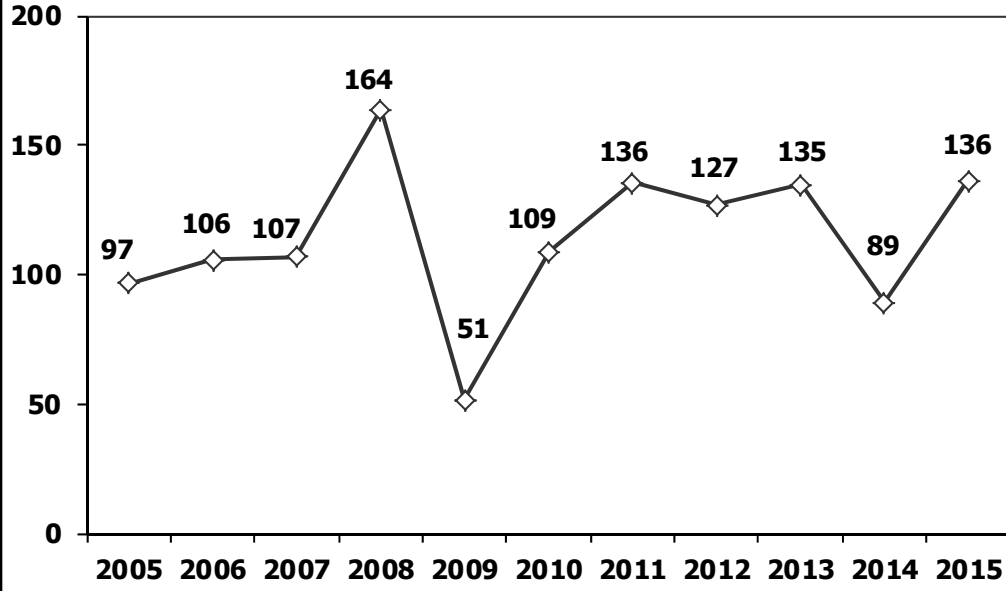
### Mart Ayı Üretimi (March Production)

FİRMALAR Companies	OTOMOBİL Pass.Car	%	K.KAMYON L.Truck	%	B.KAMYON Mid.Truck	%	KAMYONET Pick Up	%	OTOBÜS Bus	%	MINİBÜS Mini-Bus	%	MİDİBÜS Midi-Bus	%	TRAKTÖR F.Tractor	%	TOPLAM Totals
A.I.O.S.	0	0	258	86	0	0	383	1	32	4	0	0	138	24	0	0	811
FORD OTOSAN	1.680	2	0	0	1.041	37	19.694	51	0	0	7.101	97	0	0	0	0	29.516
HATTAT	0	0	0	0	0	0	0	0	0	0	0	0	0	0	238	5	238
HONDA TÜRKİYE	1.133	2	0	0	0	0	0	0	0	0	0	0	0	0	0	0	1.133
HYUNDAI ASSAN	20.350	28	0	0	0	0	0	0	0	0	0	0	0	0	0	0	20.350
KARSAN	0	0	0	0	8	0	3	0	0	0	200	3	53	9	0	0	264
M. BENZ TÜRK	0	0	0	0	1.752	63	0	0	356	47	0	0	0	0	0	0	2.108
MANTÜRKİYE	0	0	0	0	0	0	0	0	212	28	0	0	0	0	0	0	212
OTOKAR	0	0	41	14	0	0	27	0	51	7	0	0	251	43	0	0	370
OYAK RENAULT	32.183	44	0	0	0	0	0	0	0	0	0	0	0	0	0	0	32.183
TEMSA	0	0	0	0	0	0	0	0	102	14	0	0	145	25	0	0	247
TOFAŞ	6.730	9	0	0	0	0	18.490	48	0	0	0	0	0	0	0	0	25.220
TOYOTA	10.705	15	0	0	0	0	0	0	0	0	0	0	0	0	0	0	10.705
TÜRK TRAKTÖR	0	0	0	0	0	0	0	0	0	0	0	0	0	0	4.403	95	4.403
<b>TOPLAM</b>	<b>72.781</b>	<b>100</b>	<b>299</b>	<b>100</b>	<b>2.801</b>	<b>100</b>	<b>38.597</b>	<b>100</b>	<b>753</b>	<b>100</b>	<b>7.301</b>	<b>100</b>	<b>587</b>	<b>100</b>	<b>4.641</b>	<b>100</b>	<b>127.760</b>



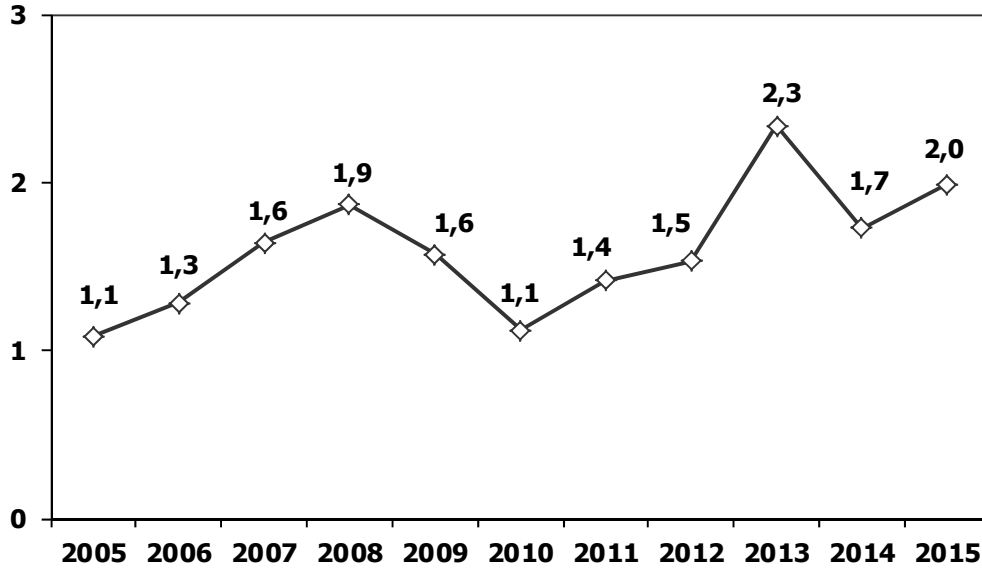
### **Ticari Araç Üretimi** (x1000) (Ocak-Mart)

Commercial Vehicle Production (x1000) (January- March)



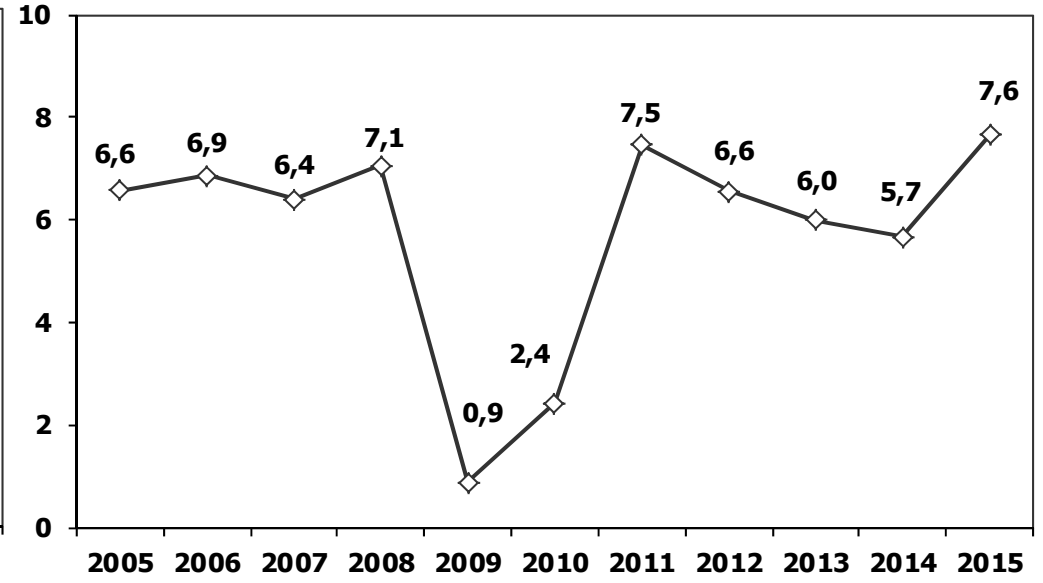
### **Otobüs Üretimi** (x1000) (Ocak-Mart)

Bus Production (x1000) (January- March)



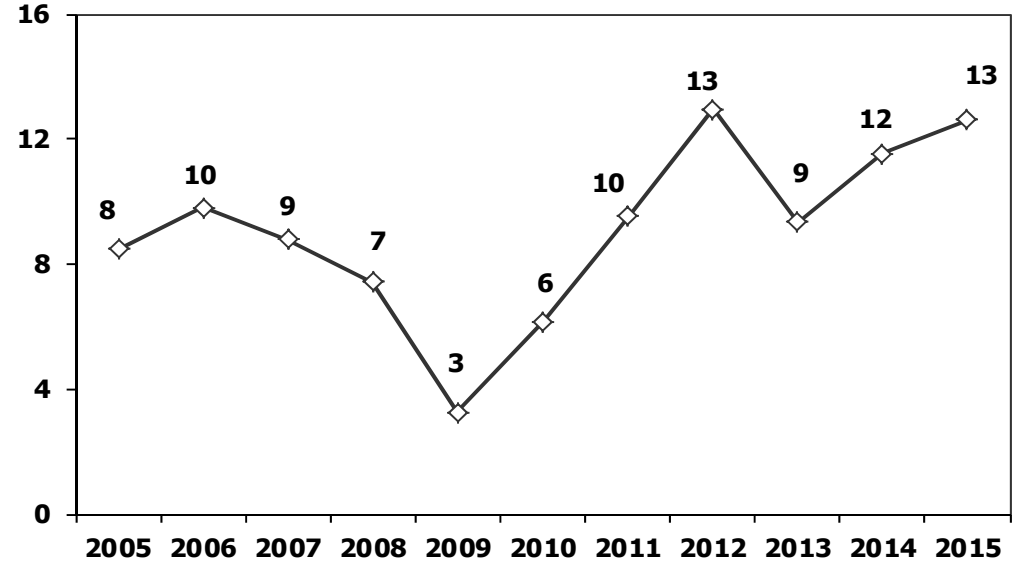
### (AYA >12 Ton) **Büyük Kamyon Üretimi** (x1000) (Ocak-Mart)

(GVW >12 Ton) Heavy Truck Production (x1000) (January- March)

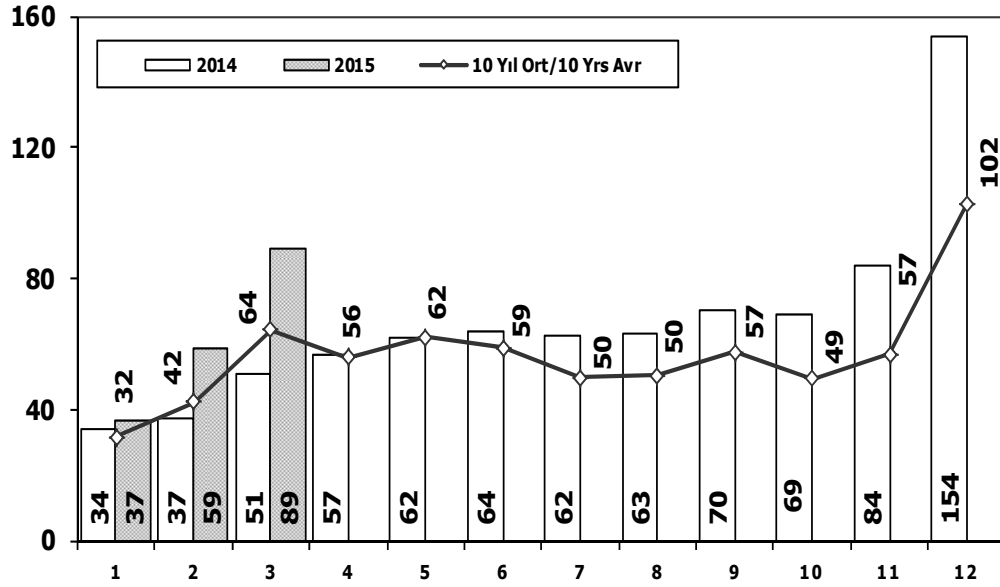


### **Traktör Üretimi** (x1000) (Ocak-Mart)

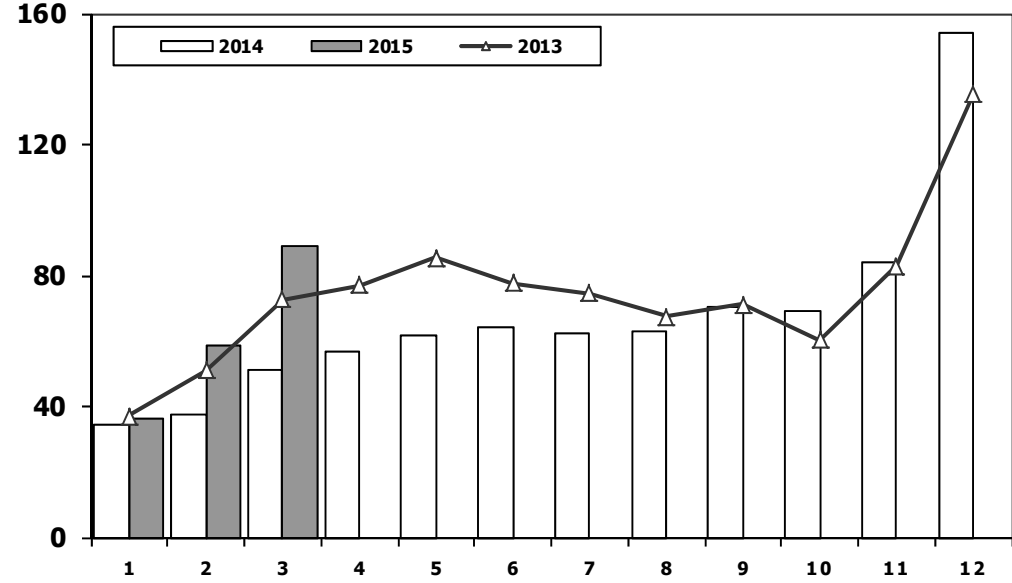
F. Tractor Production (x1000) (January- March)



### Toplam Pazarın Analizi (x1000) Total Market Analysis (x1000)



### Toplam Pazar (x1000) Total Market (x1000)

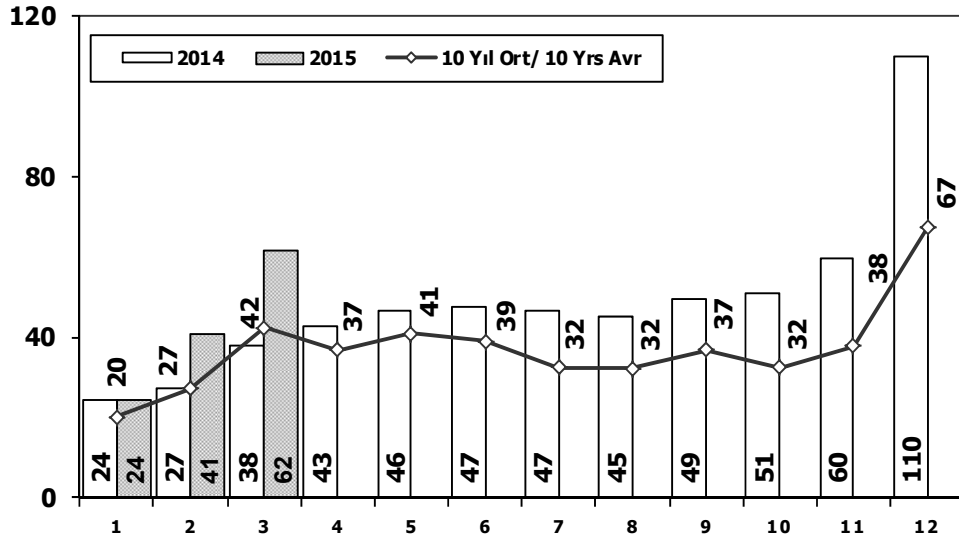


Aylar / Months	10 Yil Ort. / 10 Yrs Avr. (x1000)	2015 (x1000)	%
1	31,7	36,6	15,3
2	42,3	58,5	38,5
3	64,3	89,1	38,6
<b>Total</b>	<b>138,3</b>	<b>184,2</b>	<b>33,2</b>

	1	2	3	4	5	6	7	8	9	10	11	12	3 Ay/Mo	Total
2005	22.687	38.291	64.502	60.873	71.383	64.379	63.847	68.647	66.580	60.791	65.719	110.838	125.480	758.537
2006	29.969	44.646	65.090	68.853	83.289	58.203	40.037	47.374	49.629	39.805	55.898	82.722	139.705	665.515
2007	24.950	31.702	45.488	45.633	51.255	51.661	50.117	54.171	50.078	56.058	67.017	106.076	102.140	634.206
2008	33.792	38.121	56.814	50.967	51.627	49.393	44.692	46.592	46.829	35.147	28.152	44.418	128.727	526.544
2009	20.631	22.846	56.531	54.426	64.887	63.102	30.246	37.092	83.403	22.117	29.202	91.386	100.008	575.869
2010	21.050	32.313	53.828	57.079	61.628	63.390	63.718	64.645	66.601	76.780	77.406	154.734	107.191	793.172
2011	47.658	62.348	83.333	82.071	85.093	85.863	65.364	61.378	63.643	72.640	67.195	134.281	193.339	910.867
2012	31.219	43.827	68.957	66.014	74.820	74.781	65.122	60.848	73.197	62.677	75.045	121.113	144.003	817.620
2013	37.140	50.931	72.688	77.015	85.421	77.771	74.726	67.383	71.037	60.399	83.017	135.596	160.759	893.124
2014	34.225	37.308	50.964	56.766	61.909	63.952	62.206	62.839	70.180	69.259	83.937	153.941	122.497	807.486
2015	36.578	58.532	89.104	0	0	0	0	0	0	0	0	0	184.214	184.214

## Otomobil Pazarının Analizi (x1000)

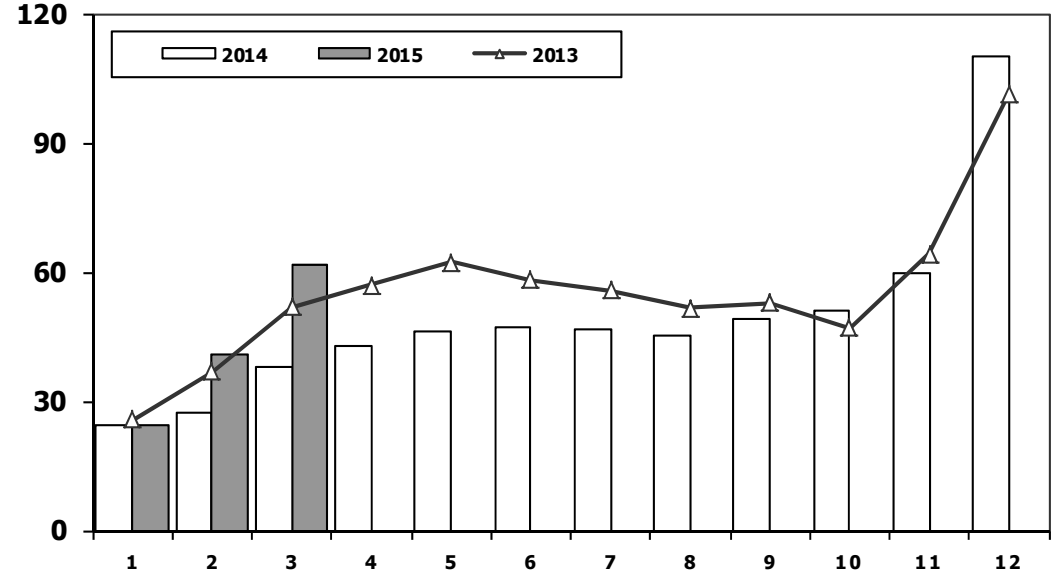
P.Cars Market Analysis (x1000)



Aylar / Months	10 Yil Ort. 10 Yrs Avr. (x1000)	2015 (x1000)	%
1	20,0	24,5	22,7
2	27,1	40,8	50,4
3	42,3	61,7	45,9
<b>Total</b>	<b>89,4</b>	<b>127,0</b>	<b>42,1</b>

## Otomobil Pazarı (x1000)

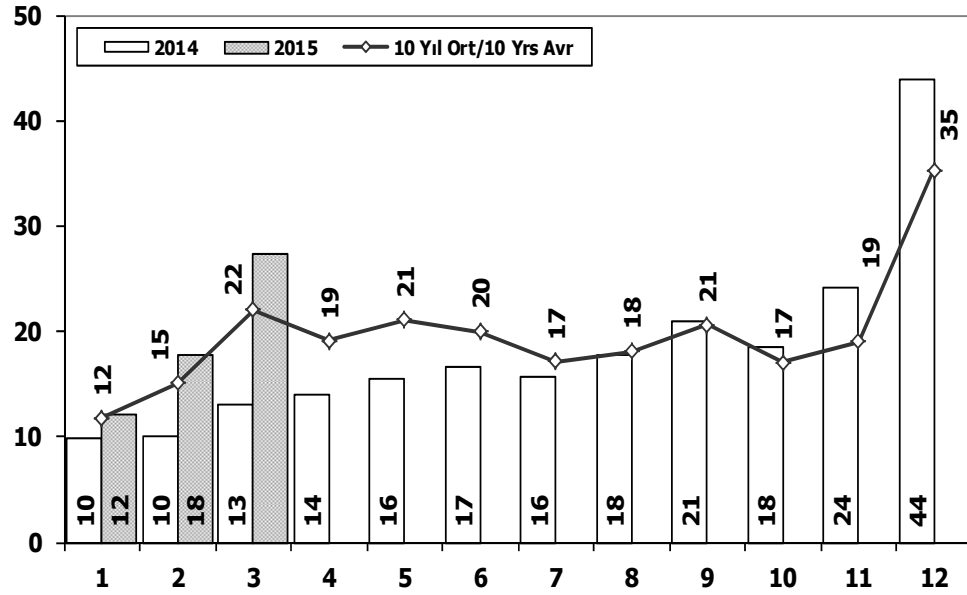
P.Cars Market (x1000)



	1	2	3	4	5	6	7	8	9	10	11	12	3 Ay/Mo	Total
2005	11.595	21.012	38.129	36.206	38.480	40.900	38.969	38.648	36.410	34.960	37.841	65.447	70.736	438.597
2006	16.506	24.929	36.996	40.177	48.521	32.982	22.653	24.873	27.517	21.237	30.477	46.351	78.431	373.219
2007	13.186	17.212	24.336	25.204	29.067	30.126	28.246	28.469	27.662	32.569	39.643	61.745	54.734	357.465
2008	18.588	21.196	34.147	30.313	31.477	28.724	25.530	26.102	27.053	19.788	17.201	25.879	73.931	305.998
2009	13.173	14.492	40.622	36.202	44.188	41.019	16.637	22.537	52.162	13.828	17.781	57.178	68.287	369.819
2010	12.594	20.651	33.958	36.549	40.467	42.086	41.399	42.222	42.477	47.859	50.061	99.461	67.203	509.784
2011	29.868	39.004	54.023	53.835	56.302	56.714	43.518	38.875	39.964	47.508	44.951	88.957	122.895	593.519
2012	21.077	29.189	47.270	45.645	50.460	50.849	44.531	41.236	49.360	43.440	52.297	80.926	97.536	556.280
2013	25.835	36.814	51.785	56.999	62.383	58.290	55.712	51.611	52.925	46.985	64.117	101.199	114.434	664.655
2014	24.368	27.167	37.812	42.769	46.379	47.278	46.602	45.131	49.262	50.814	59.695	110.054	89.347	587.331
2015	24.498	40.817	61.676	0	0	0	0	0	0	0	0	0	126.991	126.991

## Ticari Araç Pazarının Analizi (x1000)

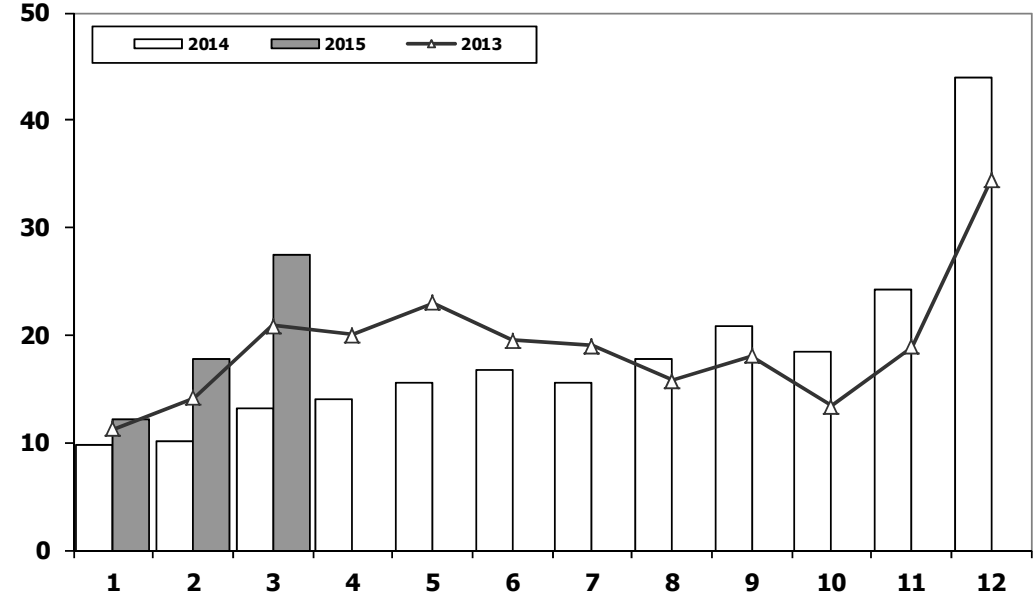
CV Market Analysis (x1000)



Aylar / Months	10 Yil Ort. 10 Yrs Avr. (x1000)	2015 (x1000)	%
1	11,8	12,1	2,8
2	15,1	17,7	17,2
3	22,0	27,4	24,6
<b>Total</b>	<b>48,9</b>	<b>57,2</b>	<b>17,1</b>

## Ticari Araç Pazarı (x1000)

CV Total Market (Local + Imports) (x1000)

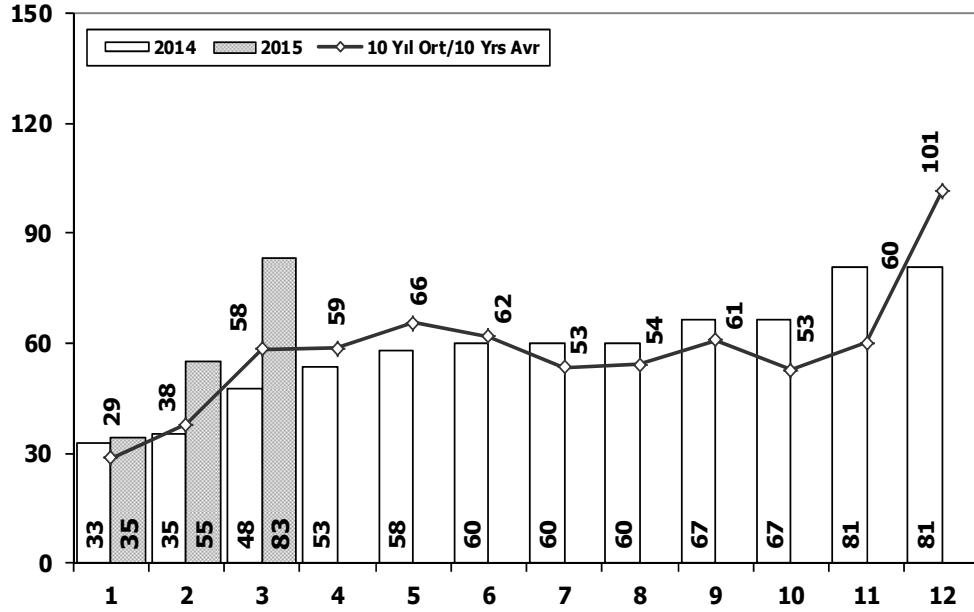


	1	2	3	4	5	6	7	8	9	10	11	12	3 Ay/Mo	Total
2005	11.092	17.279	26.373	24.667	32.903	23.479	24.878	29.999	30.170	25.831	27.878	45.391	54.744	319.940
2006	13.463	19.717	28.094	28.676	34.768	25.221	17.384	22.501	22.112	18.568	25.421	36.371	61.274	292.296
2007	11.764	14.490	21.152	20.429	22.188	21.535	21.871	25.702	22.416	23.489	27.374	44.331	47.406	276.741
2008	15.204	16.925	22.667	20.654	20.150	20.669	19.162	20.490	19.776	15.359	10.951	18.539	54.796	220.546
2009	7.458	8.354	15.909	18.224	20.699	22.083	13.609	14.555	31.241	8.289	11.421	34.208	31.721	206.050
2010	8.456	11.662	19.870	20.530	21.161	21.304	22.319	22.423	24.124	28.921	27.345	55.273	39.988	283.388
2011	17.790	23.344	29.310	28.236	28.791	29.149	21.846	22.503	23.679	25.132	22.244	45.324	70.444	317.348
2012	10.142	14.638	21.687	20.369	24.360	23.932	20.591	19.612	23.837	19.237	22.748	40.187	46.467	261.340
2013	11.305	14.117	20.903	20.016	23.038	19.481	19.014	15.772	18.112	13.414	18.900	34.397	46.325	228.469
2014	9.857	10.141	13.152	13.997	15.530	16.674	15.604	17.708	20.918	18.445	24.242	43.887	33.150	220.155
2015	12.080	17.715	27.428	0	0	0	0	0	0	0	0	0	57.223	57.223



## Hafif Araç Pazarının Analizi (x1000)

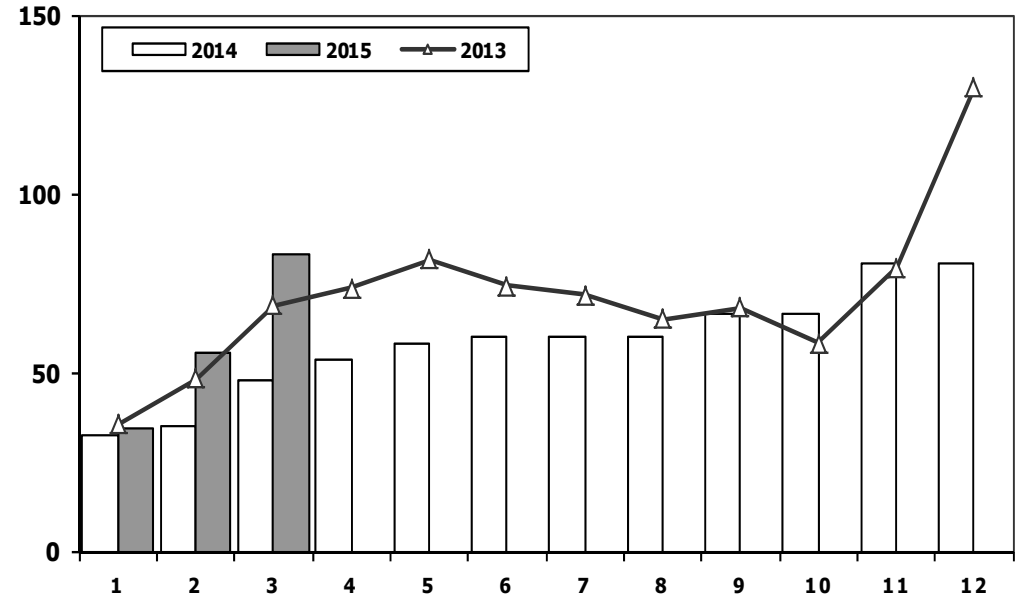
LV Market Analysis (x1000)



Aylar / Months	10 Yil Ort. 10 Yrs Avr. (x1000)	2015 (x1000)	%
1	28,6	34,6	21,2
2	37,7	55,3	46,6
3	58,3	83,3	42,9
<b>Total</b>	<b>124,6</b>	<b>173,2</b>	<b>39,1</b>

## Hafif Araç Pazarı (x1000)

LV Total Market (Local + Imports) (x1000)

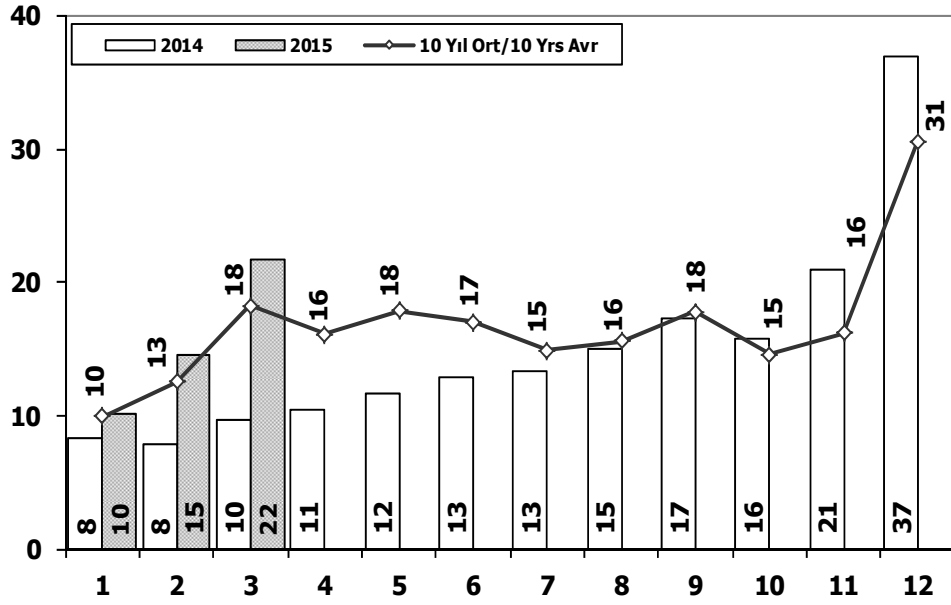


	1	2	3	4	5	6	7	8	9	10	11	12	3Ay/Mo	Total
2005	20.747	35.766	60.707	56.844	67.357	60.796	61.015	64.011	61.954	56.638	61.364	103.209	117.220	710.408
2006	27.917	40.938	60.052	64.038	78.229	54.355	37.251	43.767	46.109	36.542	51.867	76.787	128.907	617.852
2007	23.117	29.184	41.890	42.366	47.938	48.674	47.490	50.558	46.581	52.725	63.313	100.926	94.191	594.762
2008	31.527	35.251	53.649	47.701	48.598	46.324	42.156	43.670	43.932	32.884	26.253	42.078	120.427	494.023
2009	19.606	21.742	55.111	52.640	63.191	61.067	28.845	35.609	81.397	21.033	27.962	88.923	96.459	557.126
2010	20.095	31.172	51.769	54.946	59.377	60.896	61.345	61.764	63.814	73.404	73.962	148.369	103.036	760.913
2011	44.892	58.663	78.403	77.695	80.646	81.573	63.044	58.406	60.129	69.421	63.657	127.910	181.958	864.439
2012	29.545	41.324	64.884	62.949	70.863	71.067	62.304	58.148	69.629	59.938	71.710	115.400	135.753	777.761
2013	35.523	48.307	68.774	73.575	81.468	74.096	71.596	65.043	67.963	58.014	79.301	129.718	152.604	853.378
2014	32.670	35.021	47.581	53.305	58.121	60.163	59.907	60.199	66.531	66.573	80.621	80.621	115.272	701.313
2015	34.615	55.331	83.302	0	0	0	0	0	0	0	0	0	173.248	173.248



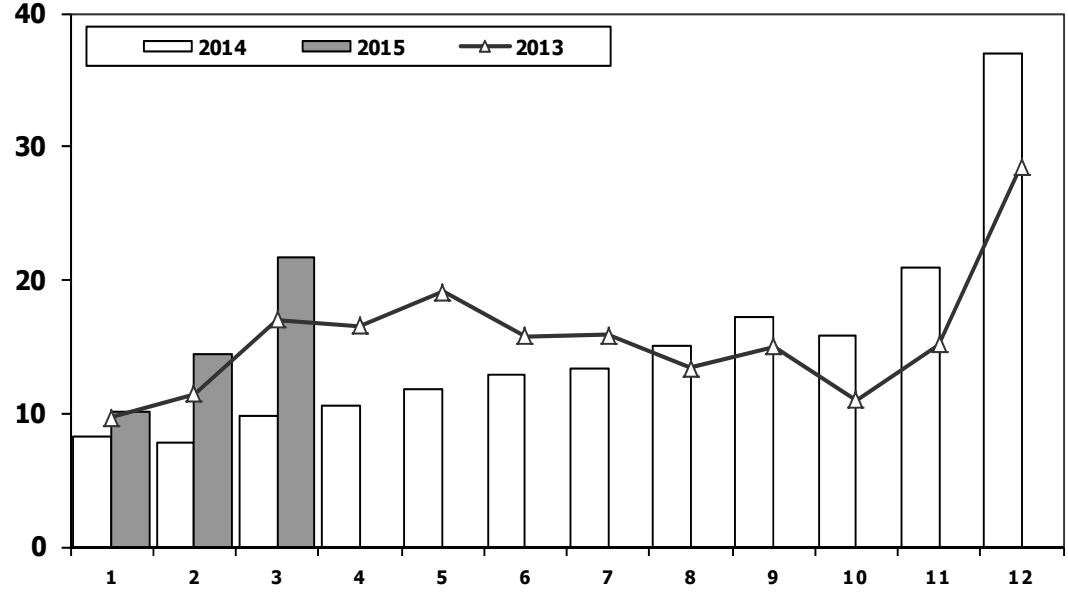
## Hafif Ticari Araç Pazarının Analizi (x1000)

### LCV Market Analysis (x1000)



## Hafif Ticari Araç Pazarı (x1000)

### LCV Total Market (Local + Imports) (x1000)

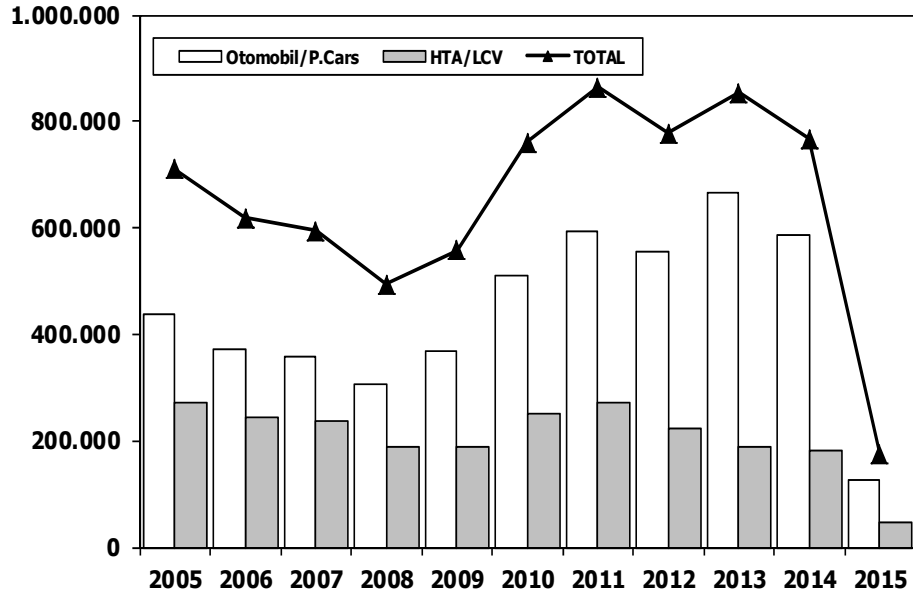


Aylar / Months	10 Yil Ort. 10 Yrs Avr. (x1000)	2015 (x1000)	%
1	10,0	10,1	1,4
2	12,5	14,5	15,7
3	18,3	21,6	18,3
<b>Total</b>	<b>40,8</b>	<b>46,3</b>	<b>13,4</b>

	1	2	3	4	5	6	7	8	9	10	11	12	3 Ay/Mo	Total
2005	9.152	14.754	22.578	20.638	28.877	19.896	22.046	25.363	25.544	21.678	23.523	37.762	46.484	271.811
2006	11.411	16.009	23.056	23.861	29.708	21.373	14.598	18.894	18.592	15.305	21.390	30.436	50.476	244.633
2007	9.931	11.972	17.554	17.162	18.871	18.548	19.244	22.089	18.919	20.156	23.670	39.181	39.457	237.297
2008	12.939	14.055	19.502	17.388	17.121	17.600	16.626	17.568	16.879	13.096	9.052	16.199	46.496	188.025
2009	6.433	7.250	14.489	16.438	19.003	20.048	12.208	13.072	29.235	7.205	10.181	31.745	28.172	187.307
2010	7.501	10.521	17.811	18.397	18.910	18.810	19.946	19.542	21.337	25.545	23.901	48.908	35.833	251.129
2011	15.024	19.659	24.380	23.860	24.344	24.859	19.526	19.531	20.165	21.913	18.706	38.953	59.063	270.920
2012	8.468	12.135	17.614	17.304	20.403	20.218	17.773	16.912	20.269	16.498	19.413	34.474	38.217	221.481
2013	9.688	11.493	16.989	16.576	19.085	15.806	15.884	13.432	15.038	11.029	15.184	28.519	38.170	188.723
2014	8.302	7.854	9.769	10.536	11.742	12.885	13.305	15.068	17.269	15.759	20.926	36.935	25.925	180.350
2015	10.117	14.514	21.626	0	0	0	0	0	0	0	0	0	46.257	46.257

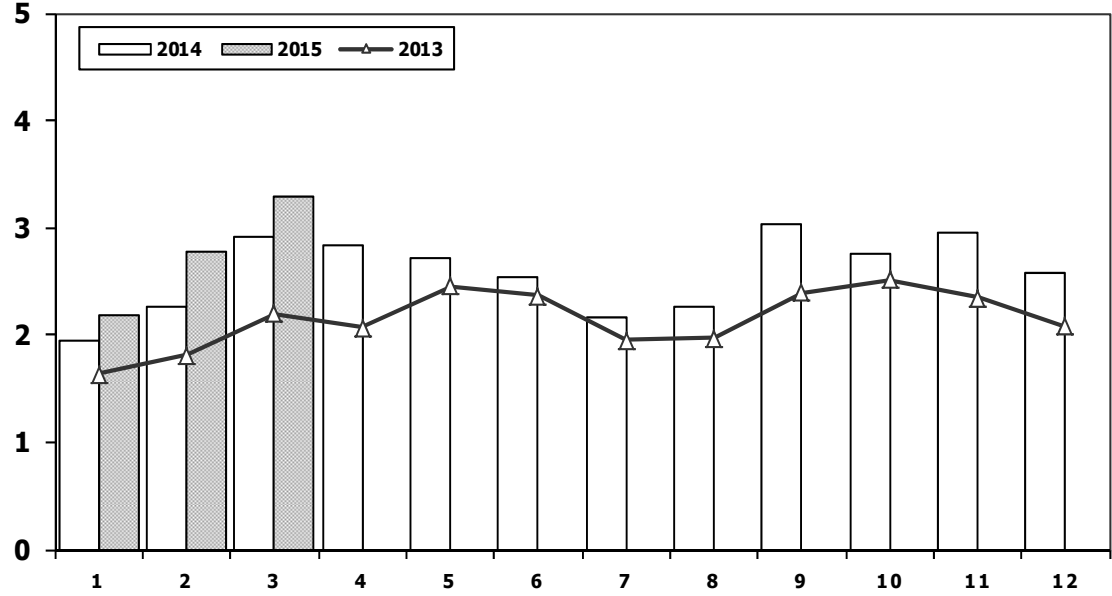


**Hafif Arac Pazarı** (AYA < 3.5 Ton)  
Light Vehicle Market (GVW < 3.5 Ton)



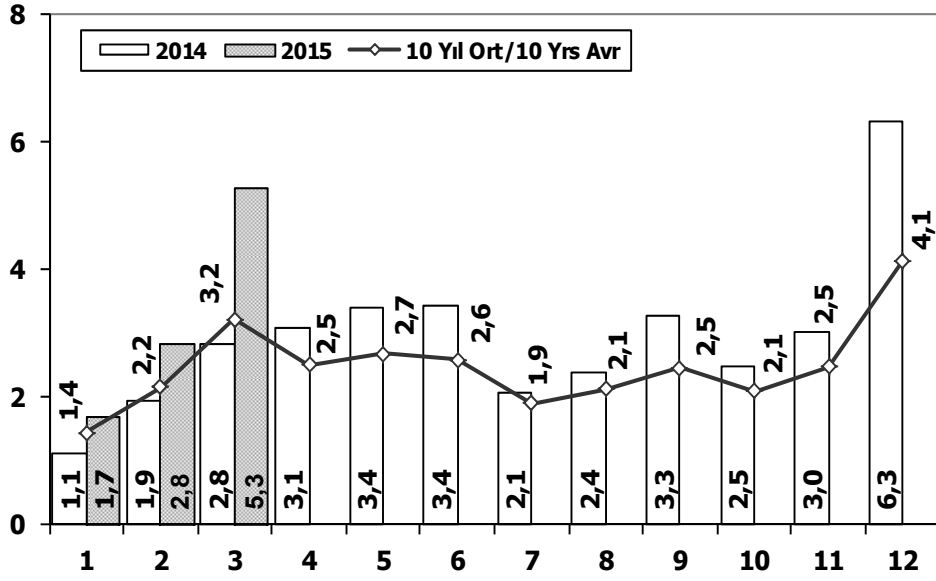
	2005	2006	2007	2008	2009	2010	2011	2012	2013	2014	2015
<b>Otomobil/P.Cars</b>	438.597	373.219	357.465	305.998	369.819	509.784	593.519	556.280	664.655	587.331	126.991
<b>HTA/LCV</b>	271.811	244.633	237.297	188.025	187.307	251.129	270.920	221.481	188.723	180.350	46.257
<b>TOTAL</b>	710.408	617.852	594.762	494.023	557.126	760.913	864.439	777.761	853.378	767.681	173.248
<b>HTA/LCV (%)</b>	38	40	40	38	34	33	31	28	22	23	27

**Traktör Pazarı** (x1000)  
F.Tractor Market (x1000)

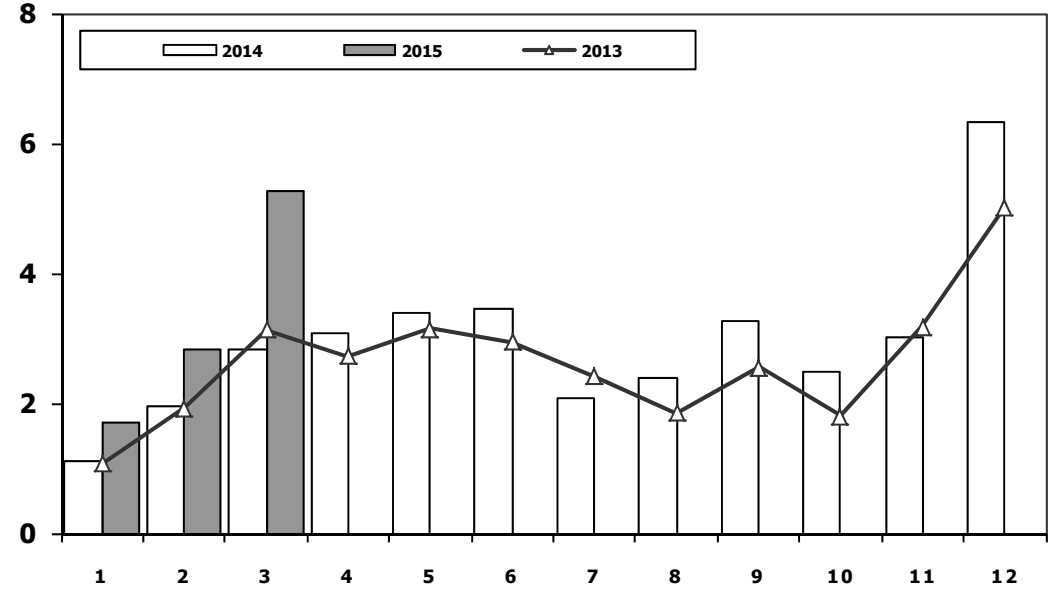


	1	2	3	4	5	6	7	8	9	10	11	12	3 Ay/Mo	Total
<b>2005</b>	1.026	1.636	2.001	2.599	2.569	2.780	2.148	2.819	2.567	2.477	2.297	2.089	4.663	27.008
<b>2006</b>	1.578	2.493	2.746	2.841	3.561	2.356	1.685	2.177	2.756	1.915	2.353	1.925	6.817	28.386
<b>2007</b>	1.812	1.778	2.063	2.107	2.266	1.853	1.653	2.065	2.372	2.239	2.231	1.602	5.653	24.041
<b>2008</b>	1.510	1.427	1.933	1.692	1.689	1.592	1.275	924	904	609	707	359	4.870	14.621
<b>2009</b>	267	344	388	638	759	828	741	534	586	765	725	715	999	7.290
<b>2010</b>	714	903	1.432	1.653	1.736	1.673	1.613	1.527	2.351	2.787	2.656	2.345	3.049	21.390
<b>2011</b>	2.458	2.610	3.105	3.403	3.847	3.599	2.952	1.559	2.957	2.823	2.603	2.807	8.173	34.723
<b>2012</b>	2.216	2.632	3.223	3.259	3.067	2.821	2.037	1.262	1.648	1.858	1.921	1.579	8.071	27.523
<b>2013</b>	1.633	1.817	2.196	2.070	2.455	2.370	1.955	1.969	2.396	2.510	2.343	2.080	5.646	25.794
<b>2014</b>	1.941	2.256	2.915	2.837	2.723	2.534	2.171	2.265	3.039	2.755	2.964	2.573	7.112	30.973
<b>2015</b>	2.187	2.767	3.297	0	0	0	0	0	0	0	0	0	8.251	8.251

### Kamyon Pazarının Analizi (x1000) AYA > 5 Ton Truck Market Analysis (x1000) GVW > 5 Ton



### Kamyon Pazarı (x1000) AYA > 5 Ton Truck Market (x1000) GVW > 5 Ton



Aylar / Months	10 Yil Ort. 10 Yrs Avr. (x1000)	2015 (x100)	%
1	1,4	1,7	17,8
2	2,2	2,8	31,7
3	3,2	5,3	63,7
<b>Total</b>	<b>6,8</b>	<b>9,8</b>	<b>43,8</b>

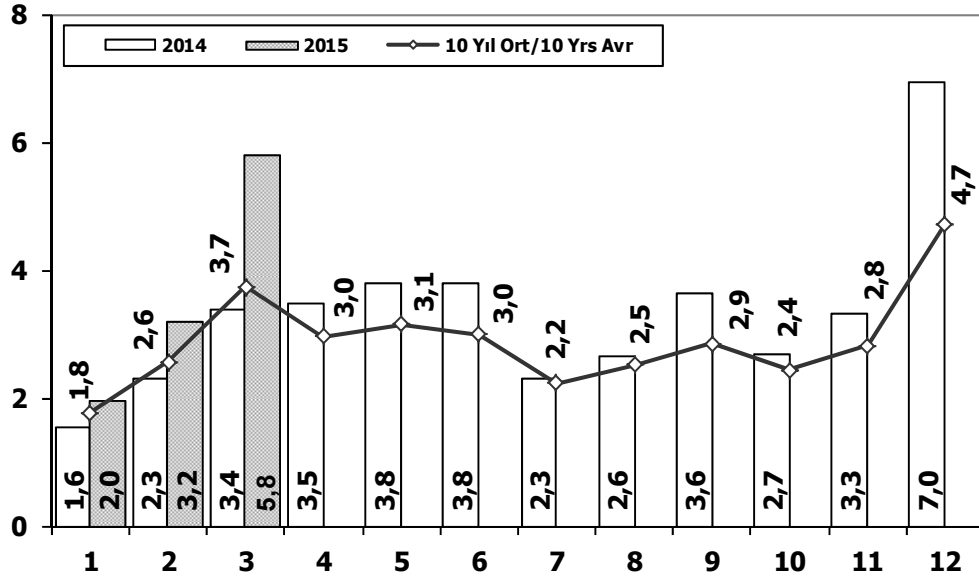
	1	2	3	4	5	6	7	8	9	10	11	12	3 Ay/Mo	Total
2005	1.693	2.186	3.288	3.484	3.413	3.147	2.504	4.028	4.043	3.708	3.918	6.570	7.167	41.982
2006	1.767	3.310	4.467	4.180	4.449	3.398	2.472	3.142	3.052	2.926	3.550	5.358	9.544	42.071
2007	1.554	2.055	3.065	2.940	2.865	2.613	2.372	3.145	2.988	2.886	3.258	4.444	6.674	34.185
2008	1.797	2.309	2.621	2.578	2.459	2.526	2.067	2.377	2.390	1.790	1.512	1.834	6.727	26.260
2009	771	759	1.034	1.342	1.355	1.651	1.156	1.205	1.780	866	981	2.015	2.564	14.915
2010	777	968	1.772	1.807	1.966	2.205	2.093	2.446	2.444	3.071	3.136	5.677	3.517	28.362
2011	2.552	3.292	4.418	3.754	3.803	3.749	1.996	2.478	3.081	2.774	3.108	5.787	10.262	40.792
2012	1.375	2.159	3.595	2.697	3.321	3.250	2.450	2.277	2.991	2.244	3.006	5.000	7.129	34.365
2013	1.077	1.931	3.127	2.720	3.145	2.951	2.411	1.845	2.554	1.801	3.173	5.025	6.135	31.760
2014	1.117	1.949	2.818	3.092	3.405	3.438	2.083	2.390	3.281	2.494	3.028	6.313	5.884	35.408
2015	1.708	2.840	5.270	0	0	0	0	0	0	0	0	0	9.818	9.818





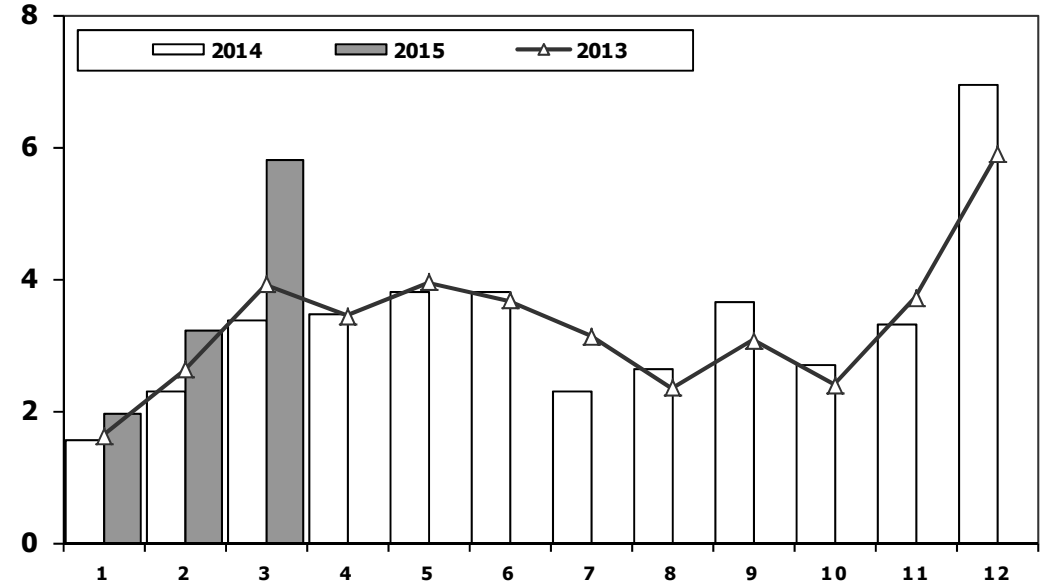
## Ağır Ticari Araç Pazarının Analizi (x1000)

HCV Market Analysis (x1000)



## Ağır Ticari Araç Pazarı (x1000)

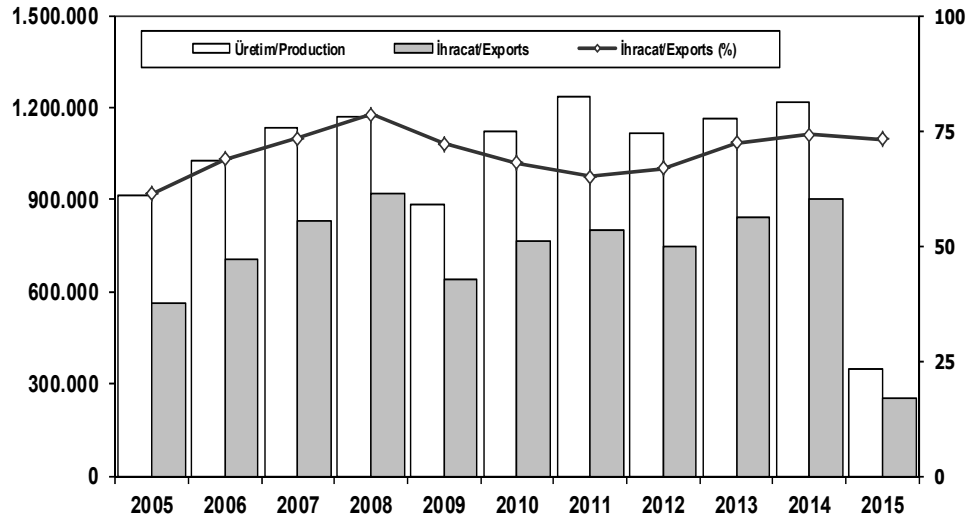
HCV Market (x1000)



Aylar / Months	10 Yıl Ort. 10 Yrs Avr. (x1000)	2015 (x1000)	%
1	1,8	2,0	10,9
2	2,6	3,2	24,8
3	3,7	5,8	55,2
<b>Total</b>	<b>8,1</b>	<b>11,0</b>	<b>35,8</b>

	1	2	3	4	5	6	7	8	9	10	11	12	3 Ay/Mo	Total
2005	1.940	2.525	3.795	4.029	4.026	3.583	2.832	4.636	4.626	4.153	4.355	7.629	8.260	48.129
2006	2.052	3.708	5.038	4.815	5.060	3.848	2.786	3.607	3.520	3.263	4.031	5.935	10.798	47.663
2007	1.833	2.518	3.598	3.267	3.317	2.987	2.627	3.613	3.497	3.333	3.704	5.150	7.949	39.444
2008	2.265	2.870	3.165	3.266	3.029	3.069	2.536	2.922	2.897	2.263	1.899	2.340	8.300	32.521
2009	1.025	1.104	1.420	1.786	1.696	2.035	1.401	1.483	2.006	1.084	1.240	2.463	3.549	18.743
2010	955	1.141	2.059	2.133	2.251	2.494	2.373	2.881	2.787	3.376	3.444	6.365	4.155	32.259
2011	2.766	3.685	4.930	4.376	4.447	4.290	2.320	2.972	3.514	3.219	3.538	6.371	11.381	46.428
2012	1.674	2.503	4.073	3.065	3.957	3.714	2.818	2.700	3.568	2.739	3.335	5.713	8.250	39.859
2013	1.617	2.624	3.914	3.440	3.953	3.675	3.130	2.340	3.074	2.385	3.716	5.878	8.155	39.746
2014	1.555	2.287	3.383	3.461	3.788	3.789	2.299	2.640	3.649	2.686	3.316	6.952	7.225	39.805
2015	1.963	3.201	5.802	0	0	0	0	0	0	0	0	0	10.966	10.966

## İhracat/Üretim (2005-2015) Exports/Production (2005-2015)



	2005	2006	2007	2008	2009	2010	2011	2012	2013	2014	2015
Üretim/Production	916.062	1.026.427	1.132.951	1.171.917	884.466	1.124.982	1.234.637	1.115.233	1.166.043	1.218.848	347.317
İhracat/Exports	561.078	706.402	829.879	920.763	637.855	763.670	801.112	745.354	843.467	902.194	253.679
İhracat/Exports (%)	61	69	73	79	72	68	65	67	72	74	73

## Taşıt Araçları İhracatı (2013-2015) Motor Vehicle Exports (2013-2015)

SEKTÖR/SECTOR	2013	2014	2014	2015	2014/2015 (%)
			3 Ay-3 Mo		
OTOMOBİL / P.Cars	484.504	581.993	136.440	158.642	16
TİCARİ ARAÇLAR / CV	343.967	303.187	66.375	91.196	37
* Kamyonet/Pick-Up	300.765	269.995	60.161	78.584	31
* Minibüs/Minibus	34.664	26.458	4.879	11.128	128
* Kamyon/Truck	3.055	1.281	226	159	-30
* Midibüs/Midibus	985	824	200	90	-55
* Otobüs/Bus	4.498	4.629	909	1.235	36
<b>TAŞIT ARAÇLARI /MV TOTAL</b>	<b>828.471</b>	<b>885.180</b>	<b>202.815</b>	<b>249.838</b>	<b>23</b>
TRAKTÖR/F.TRACTOR	14.996	17.014	3.531	3.841	9
<b>TOTAL</b>	<b>843.467</b>	<b>902.194</b>	<b>206.346</b>	<b>253.679</b>	<b>23</b>

## Otomotiv Ana ve Yan Sanayii İhracatı (ABD \$) CBU and CKD Exports - \$

SEKTÖR/SECTOR	2012 Toplam (Total)	2013 Toplam (Total)	2014 Toplam (Total)	2014	2015	2015/2014 (%)
				3 Ay (3 Months)		
<b>Toplam Yan Sanayi/Total Component Industry</b>	<b>8.215.954.295</b>	<b>9.065.017.539</b>	<b>9.508.032.776</b>	<b>2.481.904.204</b>	<b>2.114.054.638</b>	<b>-15</b>
İç ve Dış Lastik / Tyres	1.199.572.093	1.130.005.892	1.126.947.745	328.266.935	246.086.965	-25
Emniyet Camı / Safety Glasses	120.641.763	135.230.310	143.231.168	39.832.736	32.882.532	-17
Motor (Engine)	272.085.582	319.294.885	171.893.752	47.564.367	34.646.108	-27
Akümülatör / Batteries	250.104.807	306.451.449	289.150.764	67.625.070	53.970.744	-20
Diğer Aksam ve Parça / Spare Parts&Components	6.373.550.048	7.174.035.002	7.776.809.346	1.998.615.096	1.746.468.288	-13
<b>Toplam Ana Sanayi/Total Vehicle Industry</b>	<b>11.100.457.162</b>	<b>12.491.591.365</b>	<b>13.272.198.027</b>	<b>3.172.293.483</b>	<b>3.204.420.198</b>	<b>1</b>
Otobüs / Bus	855.424.304	937.790.963	985.983.007	206.062.511	227.710.675	11
Midibüs-Minibüs / Minibus- Minibus	161.806.275	147.769.644	97.685.509	7.338.115	39.016.912	432
Otomobil (P. Cars)	6.068.045.119	6.855.475.590	7.270.836.596	1.807.468.647	1.758.742.034	-3
Kamyon-Kamyonet/HCV-LCV	3.433.310.999	3.918.798.755	4.201.921.030	989.649.456	1.027.817.347	4
Çekici/Truck-Tractor	71.336.635	218.385.732	252.416.256	61.467.822	66.091.524	8
Römork ve Yarı Römork/Trailer-Semi Trailer	195.093.537	77.907.407	38.396.525	6.644.898	5.337.038	-20
Tarım Traktörü/Farm Tractor	315.440.294	335.463.275	424.959.103	93.662.033	79.704.668	-15
<b>Toplam/Total</b>	<b>19.316.411.457</b>	<b>21.556.608.904</b>	<b>22.780.230.802</b>	<b>5.654.197.687</b>	<b>5.318.474.836</b>	<b>-6</b>

**Kaynak:** Otomotiv Endüstrisi İhracatçıları Birliği





**Firma Bazında İhracat (Adet)**  
Export Of member Companies (Unit)

FİRMALAR Companies	2013	2014	Ocak-Mart 3 Months	
			2014	2015
			OYAK RENAULT	266.508
FORD OTOSAN	208.722	187.921	35.781	59.077
HYUNDAI ASSAN	85.500	179.793	36.625	47.570
TOFAŞ	160.309	142.234	36.541	43.344
TOYOTA	86.908	109.517	30.544	23.149
TÜRK TRAKTÖR	14.402	15.866	3.313	3.681
M. BENZ TÜRK	5.331	3.438	602	849
MAN TÜRKİYE	898	937	232	448
HONDA TÜRKİYE	2.121	1.560	210	441
HATTAT TARIM	594	1.148	218	160
OTOKAR	620	580	30	91
A.I.O.S.	770	748	214	49
TEMSA GLOBAL	663	423	103	43
KARSAN	10.120	37	7	19
BMC	1	0	0	0
<b>GENEL TOPLAM</b>	<b>843.467</b>	<b>902.194</b>	<b>206.346</b>	<b>253.679</b>

Kaynak: OSD

**Sektör Bazında İhracat (\$)**  
Exports on Sectorial Basis

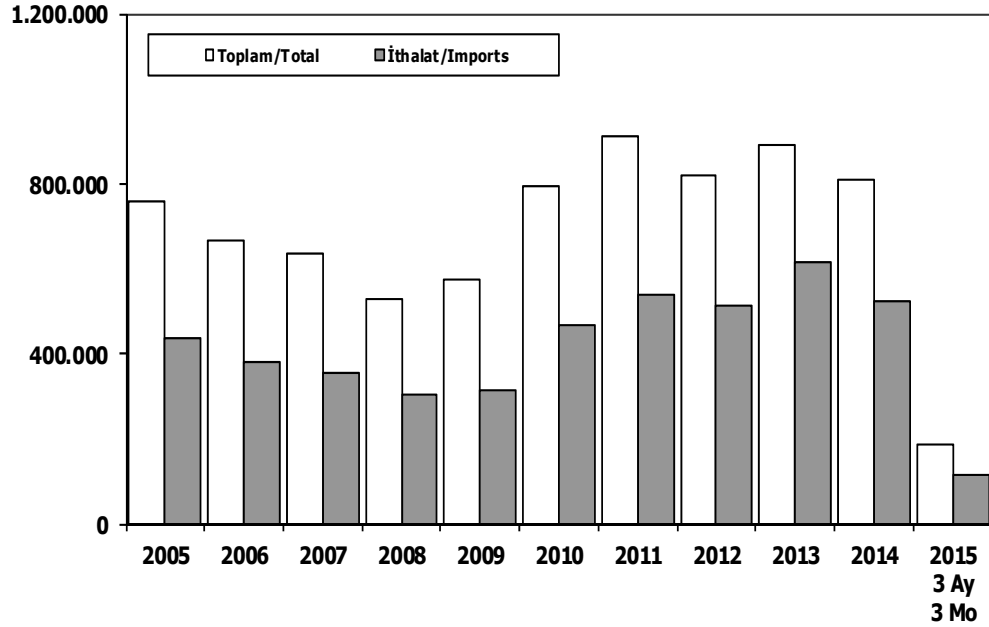
SEKTÖRLER	MART				OCAK-MART			
	2014	2015	2015/2014 (%)	2015 Pay (%)	2014	2015	2015/2014 (%)	2015 Pay (%)
1 Otomotiv Endüstrisi	2.126.491	1.772.088	-16,7	15,8	5.545.090	5.204.313	-6,1	14,5
2 Hazırgiyim ve Konfeksiyon	1.599.278	1.328.893	-16,9	11,8	4.671.323	3.982.185	-14,8	11,1
3 Kimyevi Maddeler ve Mamulleri	1.460.149	1.353.888	-7,3	12,1	4.298.734	3.722.263	-13,4	10,4
4 İhracatçı Birlikleri Kaydından Muaf İhracat	**	**	**	**	1.416.281	3.339.595	135,8	9,3
5 Çelik	1.173.026	966.420	-17,6	8,6	3.467.580	2.765.370	-20,3	7,7
6 Elektrik Elektronik ve Hizmet	1.056.527	841.792	-20,3	7,5	2.880.488	2.407.280	-16,4	6,7
7 Tekstil ve Hammaddeleri	770.353	680.973	-11,6	6,1	2.253.933	1.939.773	-13,9	5,4
8 Hububat, Bakliyat, Yağlı Tohumlar ve Mam.	598.289	555.735	-7,1	4,9	1.768.623	1.614.930	-8,7	4,5
9 Demir ve Demir Dışı Metaller	599.424	532.575	-11,2	4,7	1.758.836	1.495.368	-15,0	4,2
10 Makine ve Aksamları	503.717	454.043	-9,9	4,0	1.452.603	1.354.898	-6,7	3,8
11 Mobilya, Kağıt ve Orman Ürünleri	369.868	348.598	-5,8	3,1	1.075.313	967.622	-10,0	2,7
12 İklimlendirme Sanayii	399.129	317.337	-20,5	2,8	1.084.687	887.823	-18,1	2,5
13 Madencilik Ürünleri	363.215	282.011	-22,4	2,5	1.091.112	840.826	-22,9	2,3
14 Fındık ve Mamulleri	154.123	209.153	35,7	1,9	490.672	689.318	40,5	1,9
15 Çimento Cam Seramik ve Toprak Ürünleri	271.914	255.774	-5,9	2,3	761.196	671.682	-11,8	1,9
16 Mücevher	211.926	160.276	-24,4	1,4	587.468	591.725	0,7	1,7
17 Yaş Meyve ve Sebze	192.354	152.917	-20,5	1,4	612.092	527.551	-13,8	1,5
18 Su Ürünleri ve Hayvansal Mamuller	193.720	171.468	-11,5	1,5	588.804	511.460	-13,1	1,4
19 Halı	190.935	167.864	-12,1	1,5	546.380	458.792	-16,0	1,3
20 Deri ve Deri Mamulleri	143.825	144.270	0,3	1,3	412.413	373.534	-9,4	1,0
21 Savunma ve Havaçlık Sanayii	107.438	136.128	26,7	1,2	321.004	332.624	3,6	0,9
22 Meyve Sebze Mamulleri	119.769	104.304	-12,9	0,9	343.616	296.194	-13,8	0,8
23 Kuru Meyve ve Mamulleri	105.106	98.831	-6,0	0,9	332.774	291.119	-12,5	0,8
24 Tütün ve Mamulleri	121.384	105.809	-12,8	0,9	300.881	277.816	-7,7	0,8
25 Gemi ve Yat	97.136	46.983	-51,6	0,4	240.844	168.830	-29,9	0,5
26 Zeytin ve Zeytinyağı	22.846	19.131	-16,3	0,2	70.542	55.092	-21,9	0,2
27 Süs Bitkileri	10.157	11.308	11,3	0,1	26.683	26.538	-0,5	0,1
28 Diğer Sanayi Ürünleri	11.184	10.630	-4,9	0,1	26.931	21.888	-18,7	0,1
<b>Toplam</b>	<b>12.973.285</b>	<b>11.229.199</b>	<b>-13,4</b>	<b>100,0</b>	<b>38.426.901</b>	<b>35.816.409</b>	<b>-6,8</b>	<b>100,0</b>

Kaynak: TİM

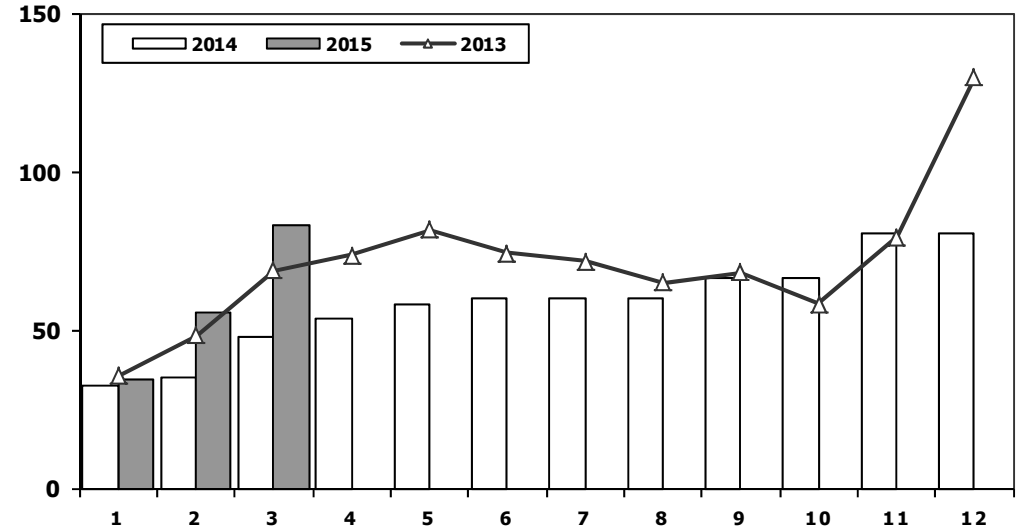
**First 3 Sectors:**

- 1- Transport Vehicle and Component Industry
- 2- Ready Wear and Confection
- 3- Chemical Articles and Products

## Toplam Pazar (Otomobil+T.Araç) Total Market (P.Cars+C.V)



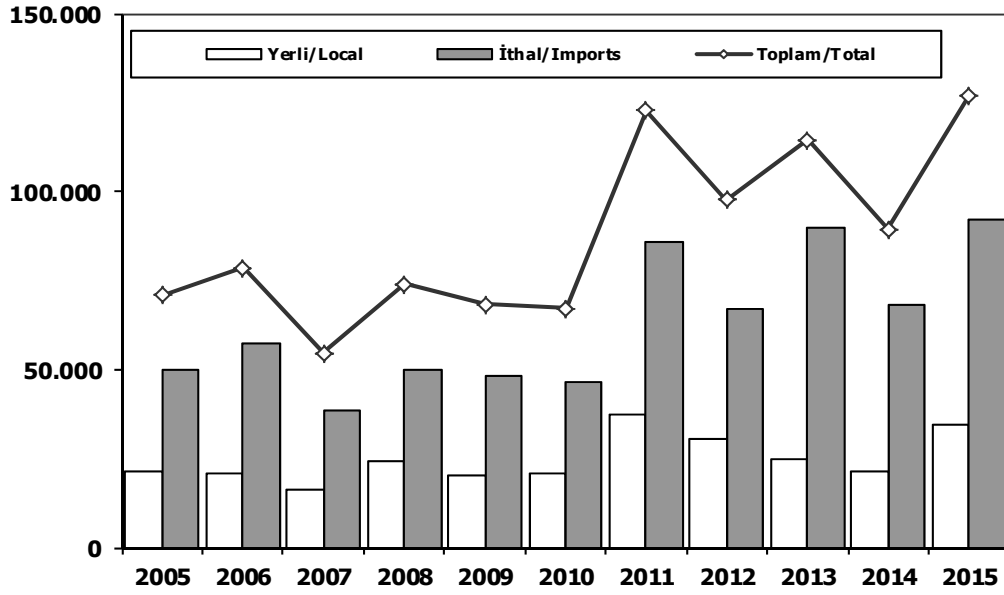
## Hafif Araçlar Pazarı (2005-2015 Ocak-Mart) LV Market (2005-2015 January-March)



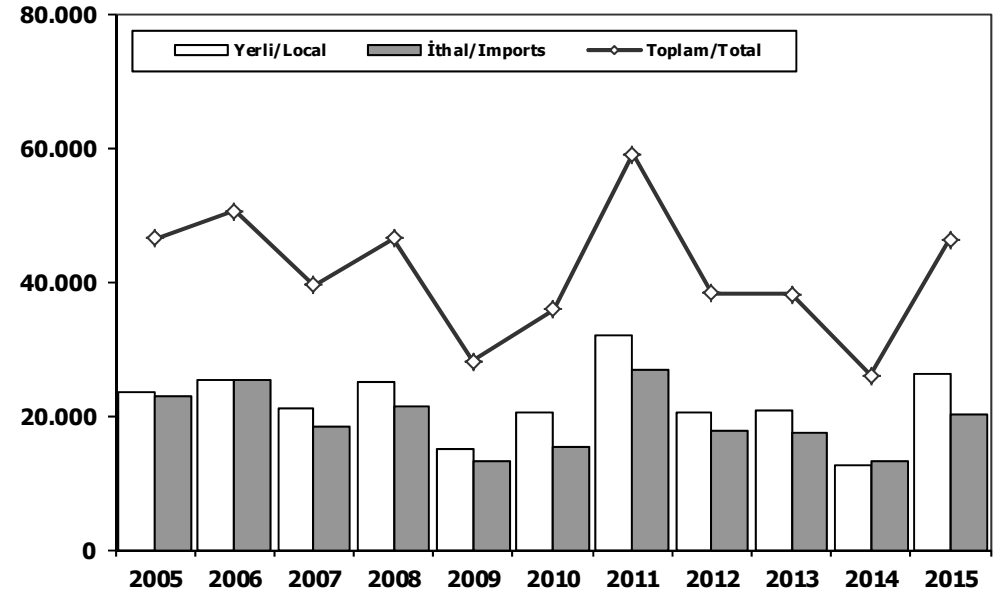
	2005	2006	2007	2008	2009	2010	2011	2012	2013	2014	2014 3 Ay 3 Mo	2015 3 Ay 3 Mo
Toplam/Total	758.537	665.515	634.206	526.544	575.869	793.172	910.867	817.620	893.124	807.486	122.497	184.214
İthalat/Imports	436.033	382.460	355.752	306.087	313.921	465.408	538.532	511.694	615.609	522.842	83.005	114.337
İthalat/Imports (%)	57	57	56	58	55	59	59	63	69	65	68	62

	2005	2006	2007	2008	2009	2010	2011	2012	2013	2014	2015
Otomobil/P.Cars	438.597	373.219	357.465	305.998	369.819	509.784	593.519	556.280	664.655	587.331	126.991
HTA /LCV	271.811	244.633	237.297	188.025	187.307	251.129	270.920	221.481	188.723	180.350	46.257
TOTAL	710.408	617.852	594.762	494.023	557.126	760.913	864.439	777.761	853.378	767.681	173.248
HTA /LCV (%)	38	40	40	38	34	33	31	28	22	23	27

## Otomobil Pazarı (2005-2015 Ocak-Mart) P.Cars Market (2005-2015 January-March)

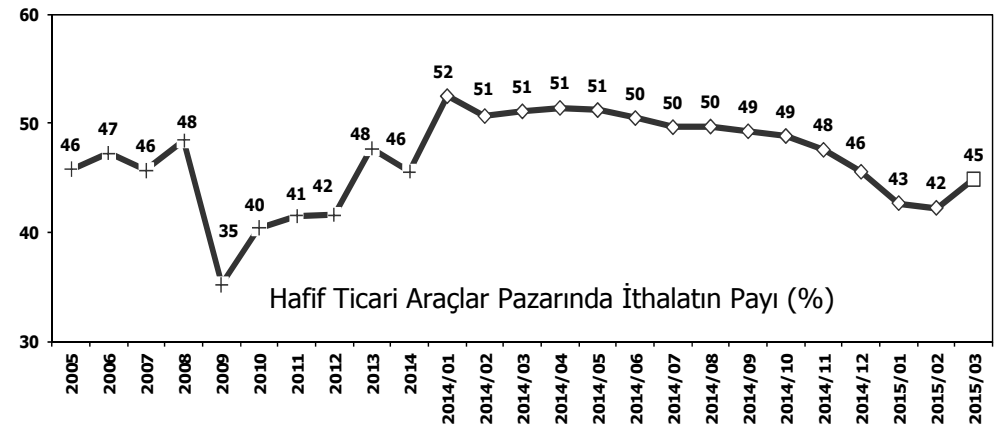
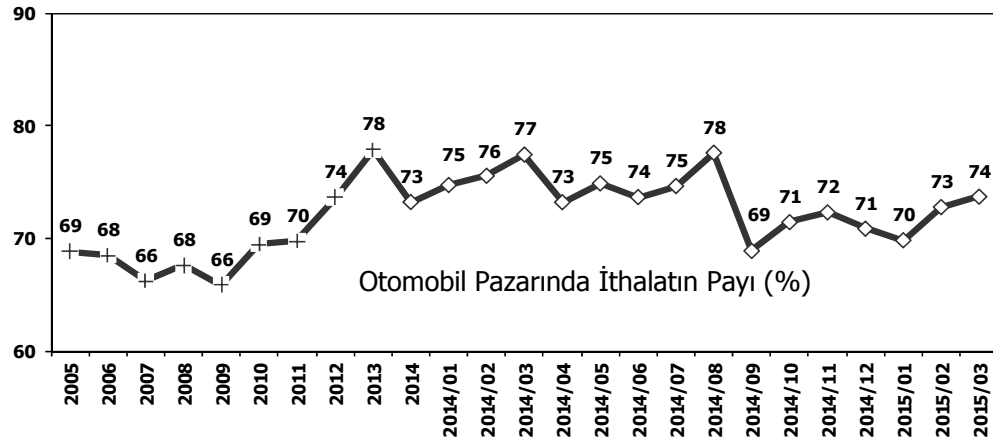


## Hafif Ticari Araçlar Pazarı (2005-2015 Ocak-Mart) Light Commercial Vehicle Market (2005-2015 January-March)



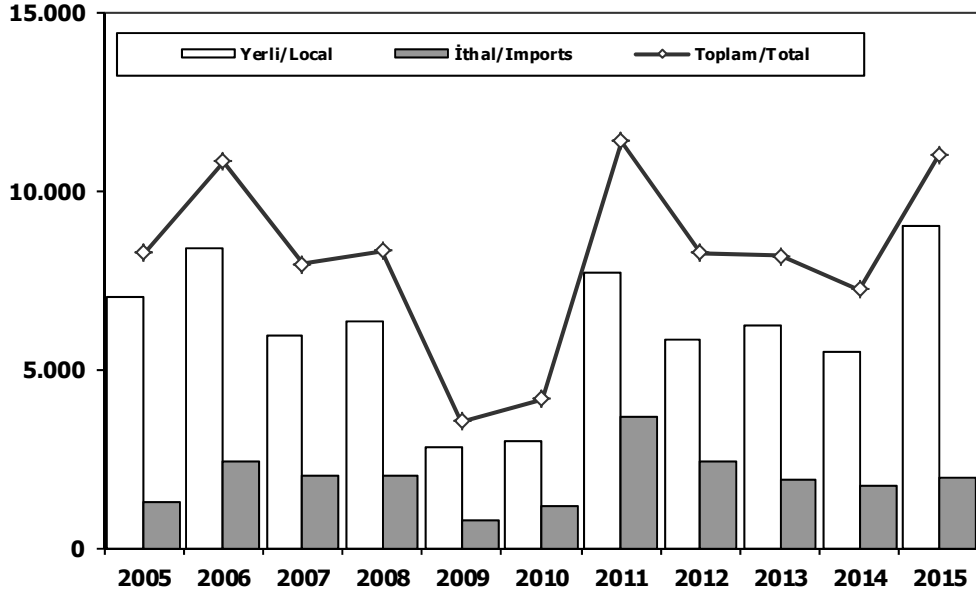
	2005	2006	2007	2008	2009	2010	2011	2012	2013	2014	2015
Yerli/Local	21.116	21.020	16.278	24.175	20.361	20.614	37.090	30.704	24.846	21.342	34.745
İthal/Imports	49.620	57.411	38.456	49.756	47.926	46.589	85.805	66.832	89.588	68.005	92.246
Toplam/Total	70.736	78.431	54.734	73.931	68.287	67.203	122.895	97.536	114.434	89.347	126.991
İthalat/Imports (%)	70	73	70	67	70	69	70	69	78	76	73

	2005	2006	2007	2008	2009	2010	2011	2012	2013	2014	2015
Yerli/Local	23.624	25.192	21.176	25.122	14.880	20.493	32.106	20.394	20.631	12.684	26.121
İthal/Imports	22.860	25.284	18.281	21.374	13.292	15.340	26.957	17.823	17.539	13.241	20.136
Toplam/Total	46.484	50.476	39.457	46.496	28.172	35.833	59.063	38.217	38.170	25.925	46.257
İthalat/Imports (%)	49	50	46	46	47	43	46	47	46	51	44



## Ağır Ticari Araçlar Pazarı (2005-2015 Ocak-Mart)

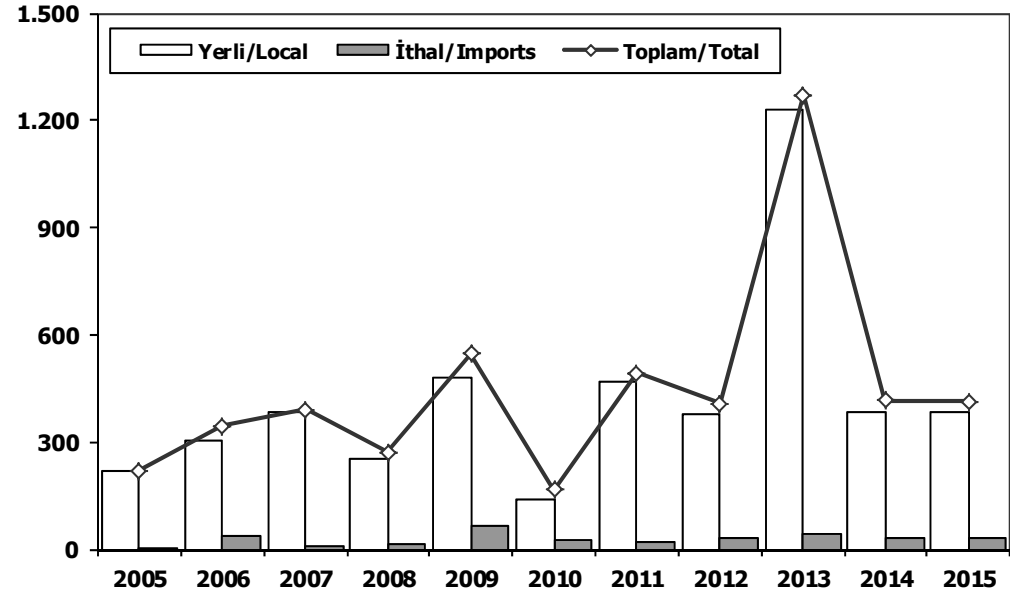
### HCV Market (2005-2015 January-March)



	2005	2006	2007	2008	2009	2010	2011	2012	2013	2014	2015
Yerli/Local	7.005	8.357	5.943	6.309	2.798	2.987	7.693	5.831	6.239	5.466	9.011
İthal/Imports	1.255	2.441	2.006	1.991	751	1.168	3.688	2.419	1.916	1.759	1.955
Toplam/Total	8.260	10.798	7.949	8.300	3.549	4.155	11.381	8.250	8.155	7.225	10.966
İthalat/Imports (%)	15	23	25	24	21	28	32	29	23	24	18

## Otobüs Pazarı (2005-2015 Ocak-Mart)

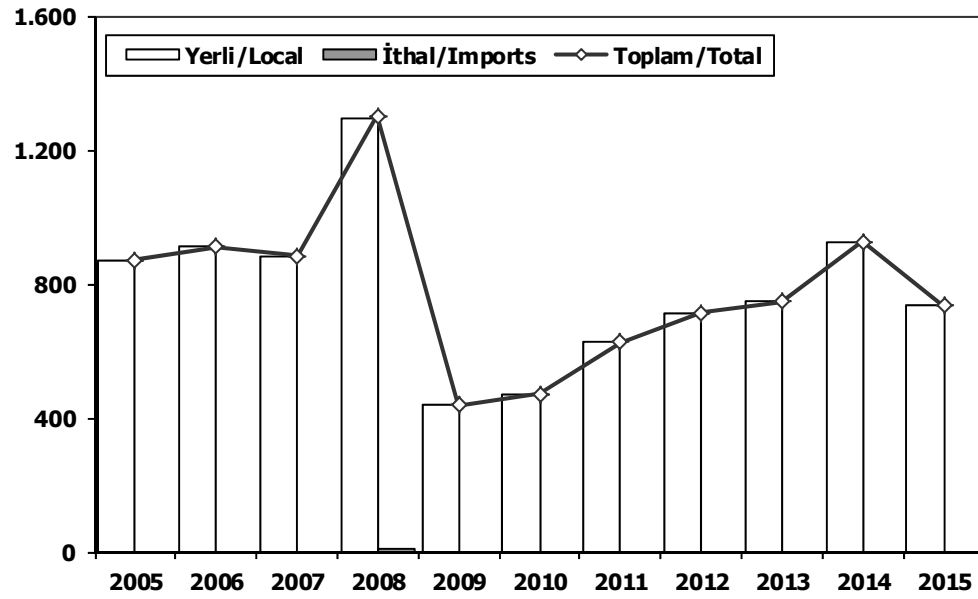
### Bus Market (2005-2015 January-March)



	2005	2006	2007	2008	2009	2010	2011	2012	2013	2014	2015
Yerli/Local	219	305	383	255	480	140	471	379	1.232	385	382
İthal/Imports	2	39	9	15	67	27	21	29	40	30	30
Toplam/Total	221	344	392	270	547	167	492	408	1.272	415	412
İthalat/Imports (%)	1	11	2	6	12	16	4	7	3	7	7

## Midibüs Pazarı (2005-2015 Ocak-Mart) (7-9 mt / 25-35 Kişilik)

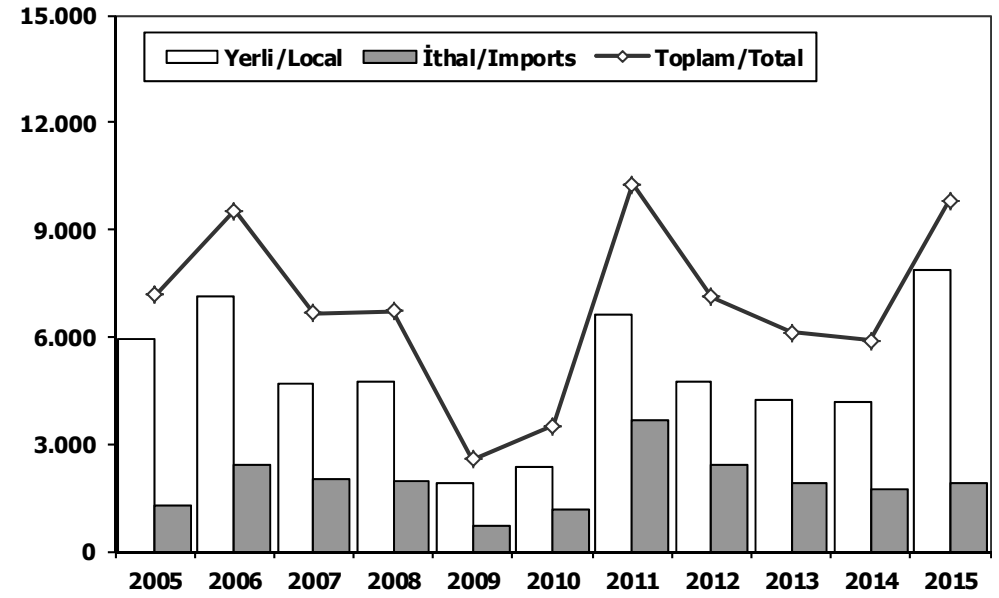
Midibus (2005-2015 January-March) Market (7-9 mt / 25-35 Passengers)



	2005	2006	2007	2008	2009	2010	2011	2012	2013	2014	2015
Yerli/Local	872	910	883	1.294	438	471	627	713	748	926	736
İthal/Imports	0	0	0	9	0	0	0	0	0	0	0
Toplam/Total	872	910	883	1.303	438	471	627	713	748	926	736
İthalat/Imports (%)	0	0	0	1	0	0	0	0	0	0	0

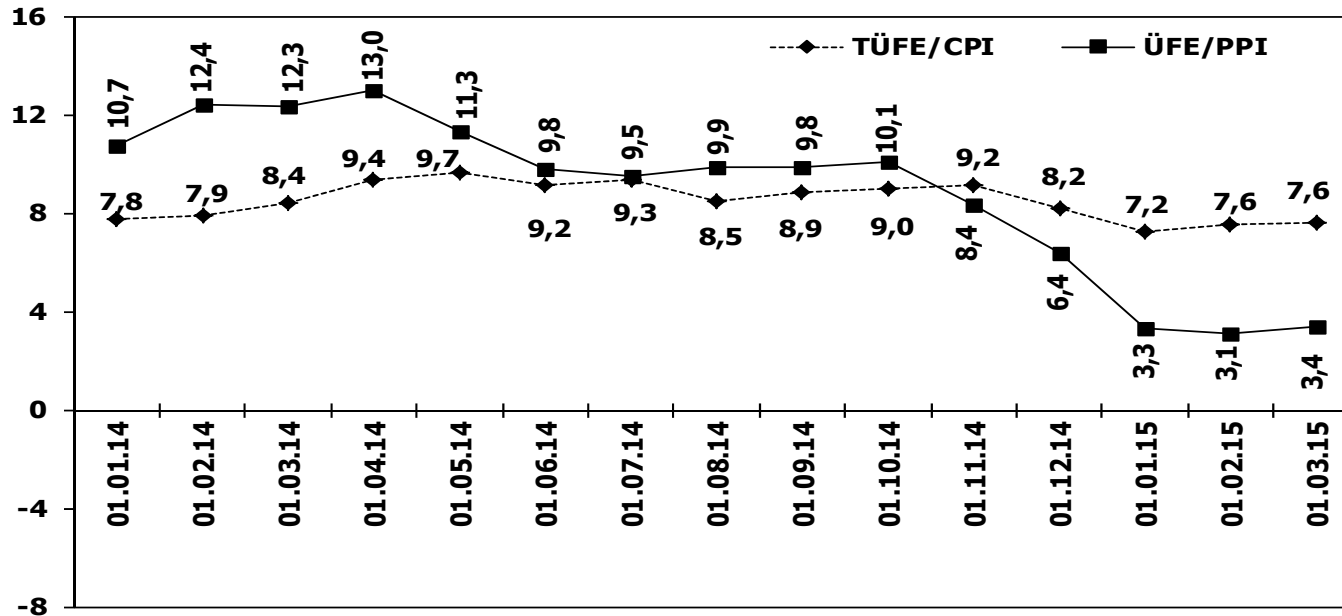
## Kamyon Pazarı (2005-2015 Ocak-Mart)

Truck Market (2005-2015 January-March)

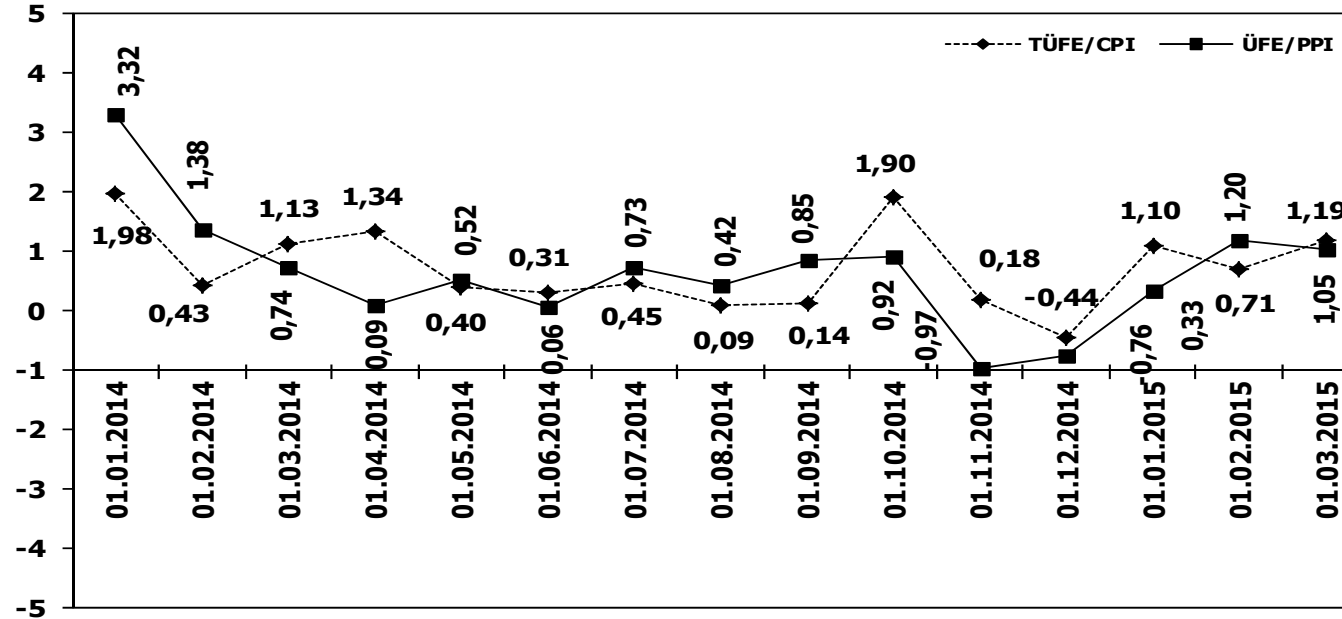


	2005	2006	2007	2008	2009	2010	2011	2012	2013	2014	2015
Yerli/Local	5.914	7.142	4.677	4.760	1.880	2.376	6.595	4.739	4.259	4.155	7.893
İthal/Imports	1.253	2.402	1.997	1.967	684	1.141	3.667	2.390	1.876	1.729	1.925
Toplam/Total	7.167	9.544	6.674	6.727	2.564	3.517	10.262	7.129	6.135	5.884	9.818
İthalat/Imports (%)	17	25	30	29	27	32	36	34	31	29	20

### TÜFE ve ÜFE'nin Yıllık Değişimi (%) CPI and PPI Yearly Changes (%)



### TÜFE ve ÜFE'nin Aylık Değişimi (%) CPI and PPI Monthly Changes (%)







## 2015 Yılı İthal Hafif Araç Satışları 2015 Light Vehicles Import Sales

2015 YILI İTHAL OTOMOBİL SATIŞLARI / P.Cars Import 2015

	2014 Toplamı 2014 Total	1	2	3	4	5	6	7	8	9	10	11	12	2015 Toplamı 2015 Total
VOLKSWAGEN	84.646	4.491	6.942	9.711										21.144
OPEL	39.255	952	2.239	3.964										7.155
FORD	35.682	1.101	2.782	3.636										7.519
DACIA	27.897	1.709	2.289	2.968										6.966
B.M.W	26.174	1.219	1.536	2.369										5.124
RENAULT	25.572	653	1.309	2.874										4.836
MERCEDES	23.100	417	1.384	2.200										4.001
HYUNDAI	21.685	784	1.011	1.884										3.679
NISSAN	19.422	949	1.372	1.859										4.180
AUDI	17.809	610	1.103	1.685										3.398
PEUGEOT	17.026	846	1.110	2.039										3.995
SKODA	14.537	515	1.568	2.120										4.203
CITROEN	14.389	683	941	1.522										3.146
SEAT	12.697	164	1.103	1.496										2.763
KIA	11.017	330	676	1.183										2.189
TOYOTA	10.146	327	535	1.070										1.932
FIAT	6.179	248	377	481										1.106
VOLVO	6.060	295	290	657										1.242
HONDA	3.269	98	241	273										612
JEEP	1.960	239	281	308										828
SUBARU	1.402	65	40	261										366
MAZDA	1.291	27	80	49										156
LAND ROVER	1.207	31	87	240										358
MINI (İngiliz)	1.071	21	47	139										207
MITSUBISHI	1.159	64	64	92										220
ALFA ROMEO	967	34	59	56										149
SUZUKI	958	27	17	20										64
PROTON	707	55	40	67										162
PORSCHE	588	45	48	53										146
CHEVROLET	572	0	0	0										0
SSANGYONG	531	44	21	31										96
CHERY	325	26	38	46										110
LANCIA	210	0	2	0										2
TATA	126	21	24	21										66
GEELY	95	4	7	3										14
MASERATI	83	2	2	3										7
SMART	76	4	3	10										17
JAGUAR	52	0	25	50										75
BENTLEY	21	0	4	1										5
FERRARI	11	0	0	1										1
INFINITI	6	1	1	1										3
LAMBORGHINI	2	1	1	2										4
<b>TOPLAM</b>	<b>429.982</b>	<b>17.102</b>	<b>29.699</b>	<b>45.445</b>	<b>0</b>	<b>0</b>	<b>0</b>	<b>0</b>	<b>0</b>	<b>0</b>	<b>0</b>	<b>0</b>	<b>0</b>	<b>92.246</b>

2015 YILI İTHAL HAFİF TİCARİ ARAÇ SATIŞLARI / Light Commercial Vehicles Import 2015

	2014 Toplamı 2014 Total	1	2	3	4	5	6	7	8	9	10	11	12	2015 Toplamı 2015 Total
VOLKSWAGEN	24.001	1.336	2.575	3.182										7.093
RENAULT	8.716	501	673	1.104										2.278
MERCEDES	8.028	391	424	1.009										1.824
FIAT	7.664	347	491	782										1.620
DACIA	6.572	250	242	696										1.188
CITROEN	6.048	269	392	730										1.391
PEUGEOT	5.832	303	403	704										1.410
MITSUBISHI	4.188	390	324	518										1.232
IVECO	2.524	117	139	282										538
KIA	2.057	147	221	136										504
ISUZU	1.728	27	19	32										78
TOYOTA	1.670	73	45	255										373
HYUNDAI	1.565	89	104	164										357
SSANGYONG	626	31	34	69										134
FORD	333	22	22	5										49
TATA	290	22	21	23										66
NISSAN	275	1	0	0										1
MAZDA	9	0	0	0										0
<b>TOPLAM</b>	<b>82.126</b>	<b>4.316</b>	<b>6.129</b>	<b>9.691</b>	<b>0</b>	<b>0</b>	<b>0</b>	<b>0</b>	<b>0</b>	<b>0</b>	<b>0</b>	<b>0</b>	<b>0</b>	<b>20.136</b>