



OTOMOTİV SANAYİ DERNEĞİ  
AUTOMOTIVE MANUFACTURERS ASSOCIATION

# AYLIK RAPOR

## Automotive Industry Monthly Report

Temmuz / July 2015

- **Üretim/Production**
- **Satış/Sales**
- **İthalat/Imports**
- **İhracat/Exports**

OSD "OICA" Üyesidir



OSD is a Member of "OICA"

## 2015 Temmuz Ayı Özeti / 2015 July Summary

KONULAR/MATTERS		TEMMUZ / JULY			7 AY/ 7 MONTHS			SON 12 AYLIK / YoY		
		2014	2015	2015/2014 (%)	2014	2015	2015/2014 (%)	2014	2015	2015/2014 (%)
Üretim/Production	Toplam/Total	98.146	112.728	15	662.223	780.320	18	1.106.418	1.288.542	16
	Otomobil/P.Cars	61.151	62.465	2	422.042	454.442	8	686.452	765.839	12
Pazar/Market	Toplam/Total	62.206	86.622	39	367.330	541.891	48	784.762	982.047	25
	Otomobil/P.Cars	46.602	64.218	38	272.375	392.064	44	589.212	707.020	20
İthalat/Import	Toplam/Total	41.416	57.474	39	245.842	351.620	43	534.095	628.620	18
	Otomobil/P.Cars	34.780	47.096	35	203.629	291.303	43	449.490	517.656	15
İhracat/Export	Toplam/Total	79.691	73.796	-7	532.026	560.132	5	858.725	913.286	6
	Otomobil/P.Cars	53.125	37.308	-30	352.660	341.165	-3	556.641	570.498	2
İhracat / Export (\$)	Toplam/Total **	2.034.438.574	1.693.606.962	-17	13.973.955.582	12.408.922.656	-11	22.909.037.720	21.216.825.187	-7
	Otomobil/P.Cars	708.376.900	484.234.734	-32	4.595.383.562	4.037.915.218	-12	7.248.785.131	6.695.192.082	-8

PARAMETRELER / PARAMETERS		TEMMUZ / JULY			7 AY/ 7 MONTHS			SON 12 AYLIK / YoY		
		2014	2015	2015/2014 (%)	2014	2015	2015/2014 (%)	2014	2015	2015/2014 (%)
ÜFE/PPI		0,73	-0,32	**	5,89	5,15	**	9,26	6,43	**
TÜFE/CPI		0,45	0,09	**	6,18	4,85	**	8,35	8,07	**
Sanayi Endeksi/Industry Index		0,67	-0,33	**	7,12	5,82	**	11,75	7,20	**
\$ (*)		2,1380	2,6946	26	2,1605	2,6057	21	2,1105	2,4509	16
EURO (*)		2,8540	2,9710	4	2,9484	2,8908	-2	2,8729	2,8577	-1
Japon Yeni (*)		2,0613	2,1815	6	2,1124	2,1438	1	2,0750	2,0741	0

(\*) Ortalama Değerler / Average Values

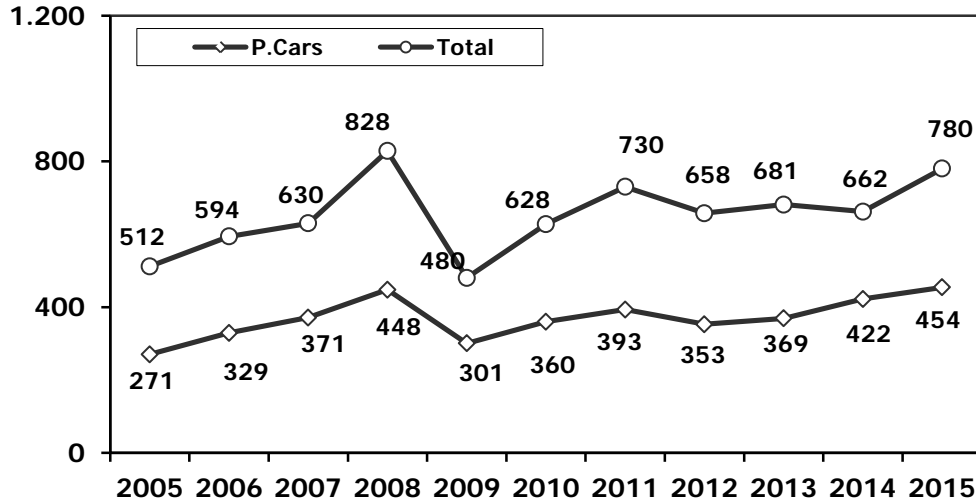
(\*\*) Toplam Sanayi / Total Industry Including Components

## 2014/2015 Yılları Üretim 2014/2015 Production

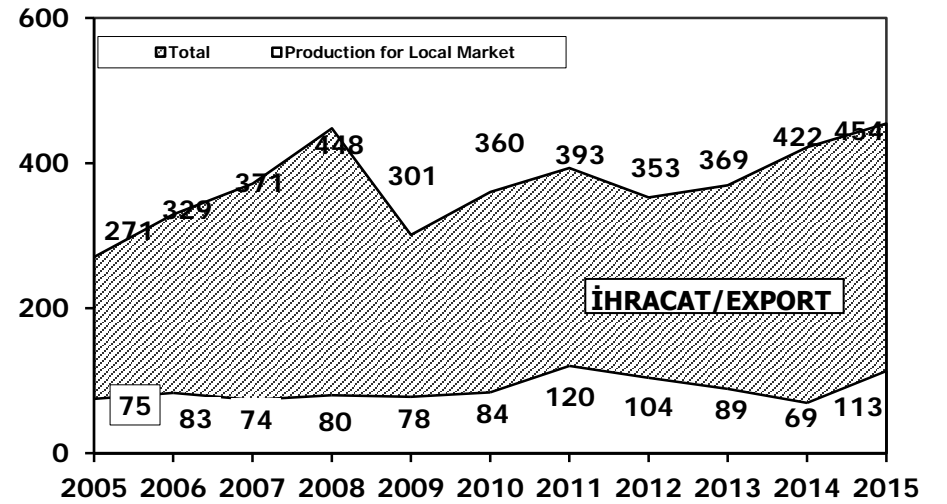
K.KAMYON : AYA 3.5-12 Ton (L.Truck:GVW 3.5-12 Ton)  
B.KAMYON : AYA 12 Ton'dan Büyük (M.Truck:GVW 12 Ton And Up)

TİPLER	TEMMUZ AYI ÜRETİMİ July Production		7 AYLIK ÜRETİM 7 Months Production		DEĞİŞİM % Percent Change %	
	2014	2015	2014	2015	TEMMUZ	7 AY 7 Months
<b>OTOMOBİL - Pass.Car</b>	61.151	62.465	422.042	454.442	2	8
<b>TİCARİ ARAÇLAR - Commercial Vehicles</b>	36.995	50.263	240.181	325.878	36	36
* B. KAMYON - M. Truck	2.302	2.082	15.851	18.432	-10	16
* K. KAMYON - L. Truck	166	257	1.824	2.218	55	22
* KAMYONET - Pick Up	30.554	42.541	196.743	259.752	39	32
* OTOBÜS - Bus	548	598	3.912	4.841	9	24
* MİNİBÜS - Minibus	3.157	4.393	18.423	37.004	39	101
* MİDİBÜS - Midibus	268	392	3.428	3.631	46	6
<b>TAŞIT ARAÇLARI TOPLAM - MV Total</b>	<b>98.146</b>	<b>112.728</b>	<b>662.223</b>	<b>780.320</b>	<b>15</b>	<b>18</b>
<b>TRAKTÖR - F.Tractor</b>	<b>4.003</b>	<b>5.197</b>	<b>28.679</b>	<b>29.512</b>	<b>30</b>	<b>3</b>
<b>GENEL TOPLAM - Grand Total</b>	<b>102.149</b>	<b>117.925</b>	<b>690.902</b>	<b>809.832</b>	<b>15</b>	<b>17</b>

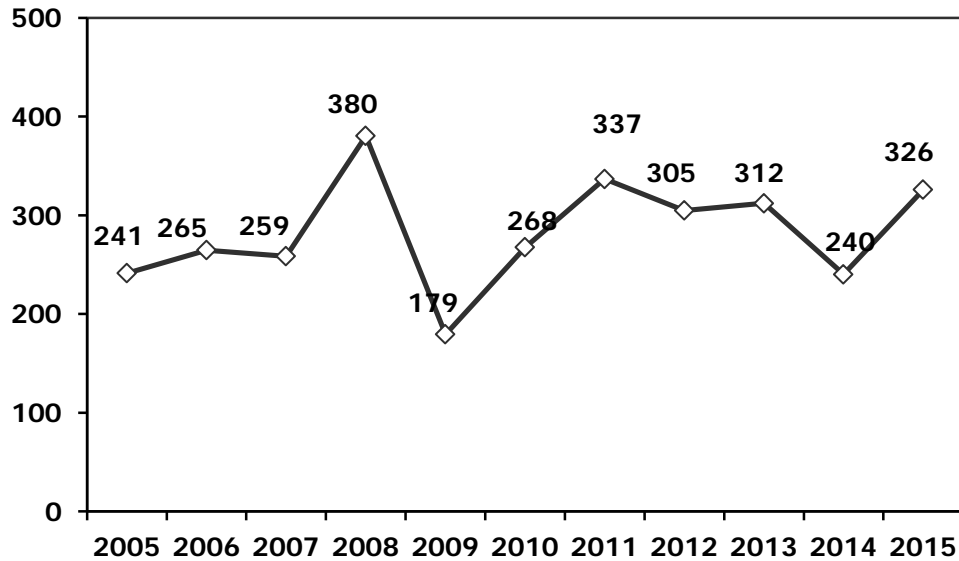
**Toplam Üretim ve Otomobil Üretimi** (x1000) (Ocak-Temmuz)  
Total & P.Cars Production (x1000) (January- July)



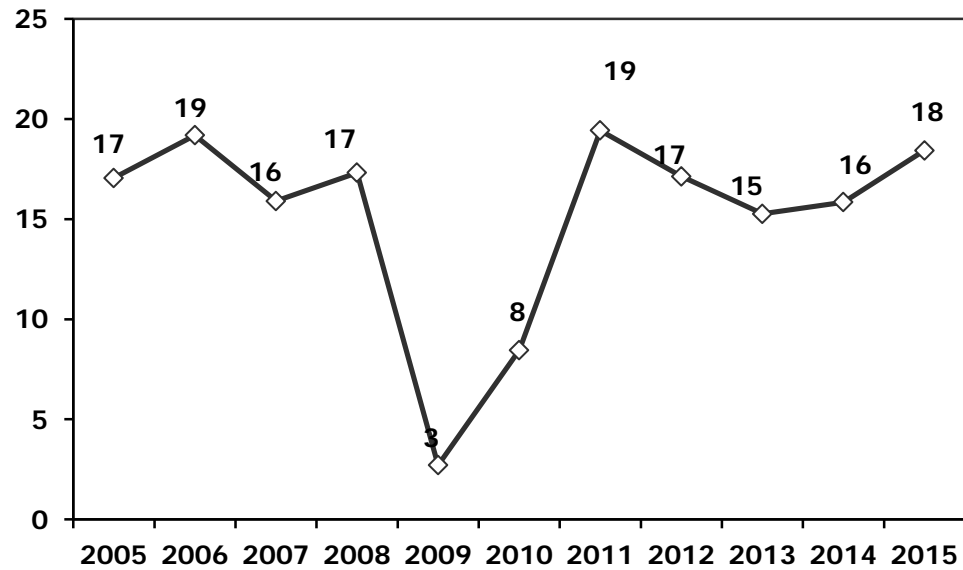
**Otomobil Üretimi ve İhracat** (x1000) (Ocak-Temmuz)  
P.Cars Production & Exports (x1000) (January- July)



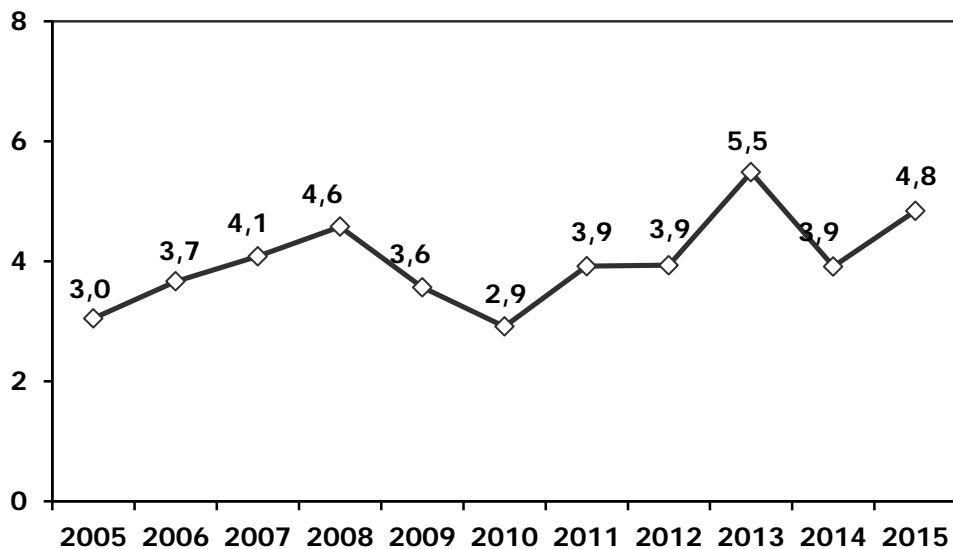
**Ticari Araç Üretimi** (x1000) (Ocak-Temmuz)  
Commercial Vehicle Production (x1000) (January- July)



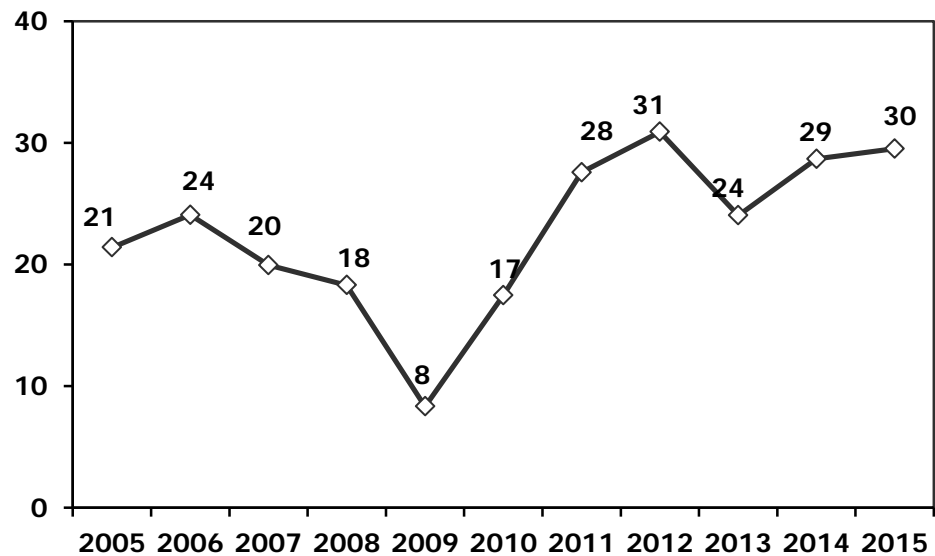
(AYA >12 Ton) **Büyük Kamyon Üretimi** (x1000) (Ocak-Temmuz)  
(GVW >12 Ton) Heavy Truck Production (x1000) (January- July)



**Otobüs Üretimi** (x1000) (Ocak-Temmuz)  
Bus Production (x1000) (January- July)

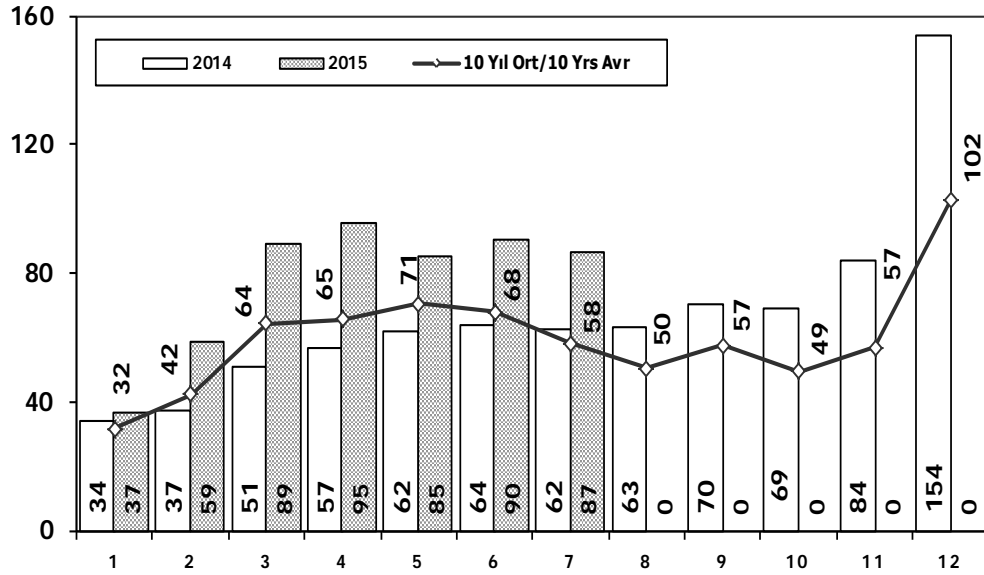


**Traktör Üretimi** (x1000) (Ocak-Temmuz)  
F. Tractor Production (x1000) (January- July)



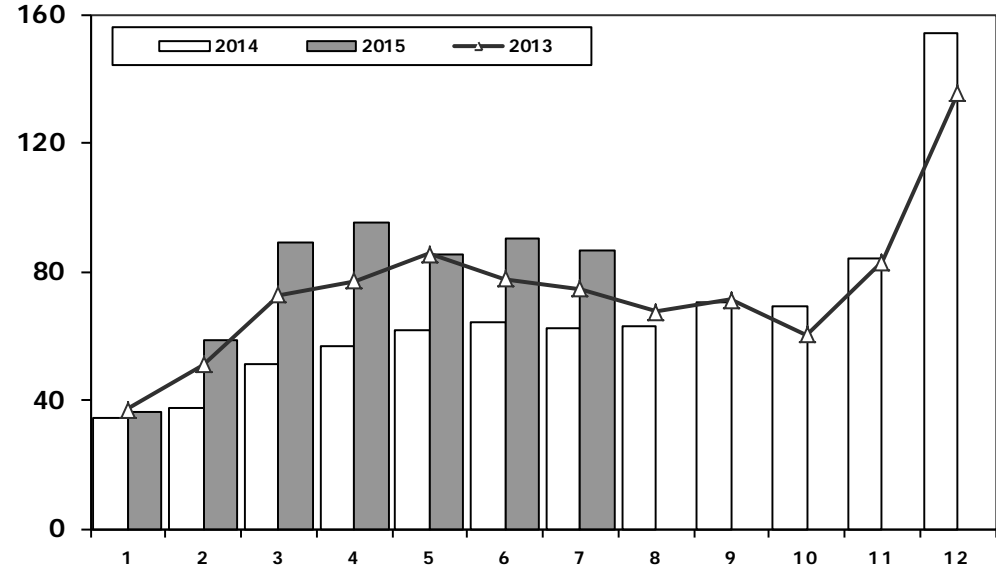
## Toplam Pazarın Analizi (x1000)

### Total Market Analysis (x1000)



## Toplam Pazar (x1000)

### Total Market (x1000)

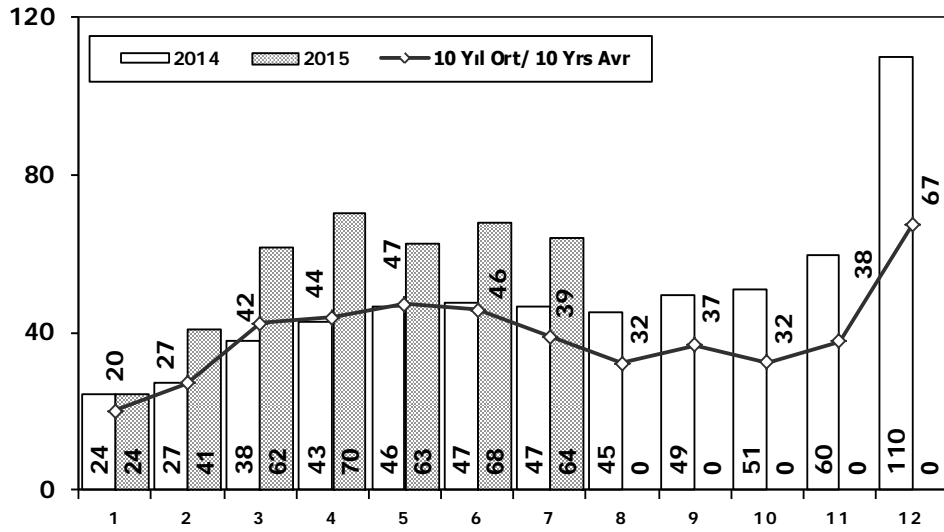


Aylar / Months	10 Yil Ort. / 10 Yrs Avr. (x1000)	2015 (x1000)	%
1	31,7	36,6	15,3
2	42,3	58,5	38,5
3	64,3	89,1	38,6
4	65,4	95,4	45,9
5	70,5	85,1	20,8
6	67,9	90,5	33,3
7	58,3	86,6	48,6
<b>Total</b>	<b>400,3</b>	<b>541,9</b>	<b>35,4</b>

	1	2	3	4	5	6	7	8	9	10	11	12	7 Ay/Mo	Total
2005	22.687	38.291	64.502	60.873	71.383	64.379	63.847	68.647	66.580	60.791	65.719	110.838	385.962	758.537
2006	29.969	44.646	65.090	68.853	83.289	58.203	40.037	47.374	49.629	39.805	55.898	82.722	390.087	665.515
2007	24.950	31.702	45.488	45.633	51.255	51.661	50.117	54.171	50.078	56.058	67.017	106.076	300.806	634.206
2008	33.792	38.121	56.814	50.967	51.627	49.393	44.692	46.592	46.829	35.147	28.152	44.418	325.406	526.544
2009	20.631	22.846	56.531	54.426	64.887	63.102	30.246	37.092	83.403	22.117	29.202	91.386	312.669	575.869
2010	21.050	32.313	53.828	57.079	61.628	63.390	63.718	64.645	66.601	76.780	77.406	154.734	353.006	793.172
2011	47.658	62.348	83.333	82.071	85.093	85.863	65.364	61.378	63.643	72.640	67.195	134.281	511.730	910.867
2012	31.219	43.827	68.957	66.014	74.820	74.781	65.122	60.848	73.197	62.677	75.045	121.113	424.740	817.620
2013	37.140	50.931	72.688	77.015	85.421	77.771	74.726	67.383	71.037	60.399	83.017	135.596	475.692	893.124
2014	34.225	37.308	50.964	56.766	61.909	63.952	62.206	62.839	70.180	69.259	83.937	153.941	367.330	807.486
2015	36.579	58.532	89.121	95.431	85.144	90.462	86.622	0	0	0	0	0	541.891	541.891

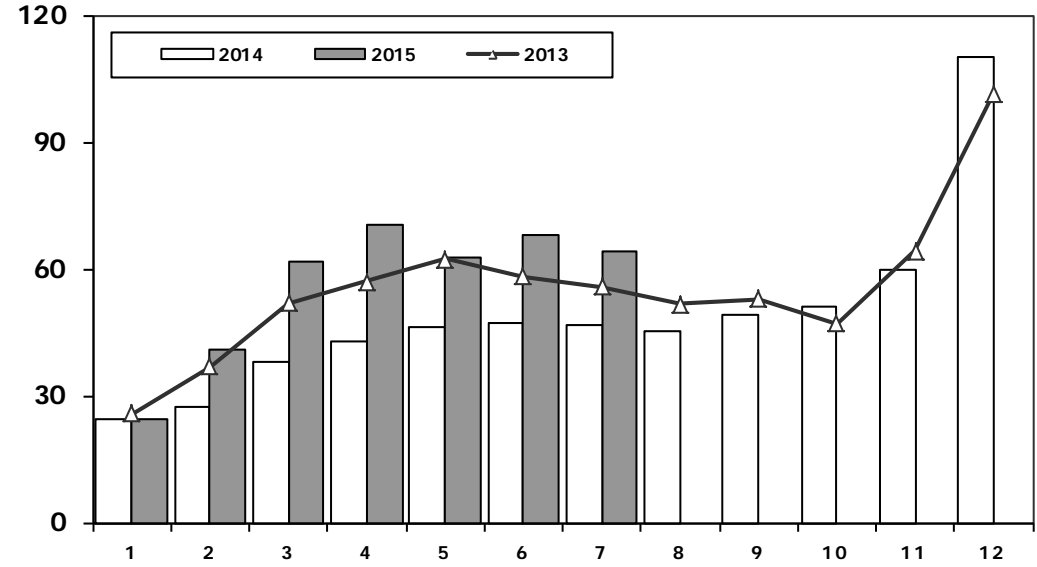
## Otomobil Pazarının Analizi (x1000)

P.Cars Market Analysis (x1000)



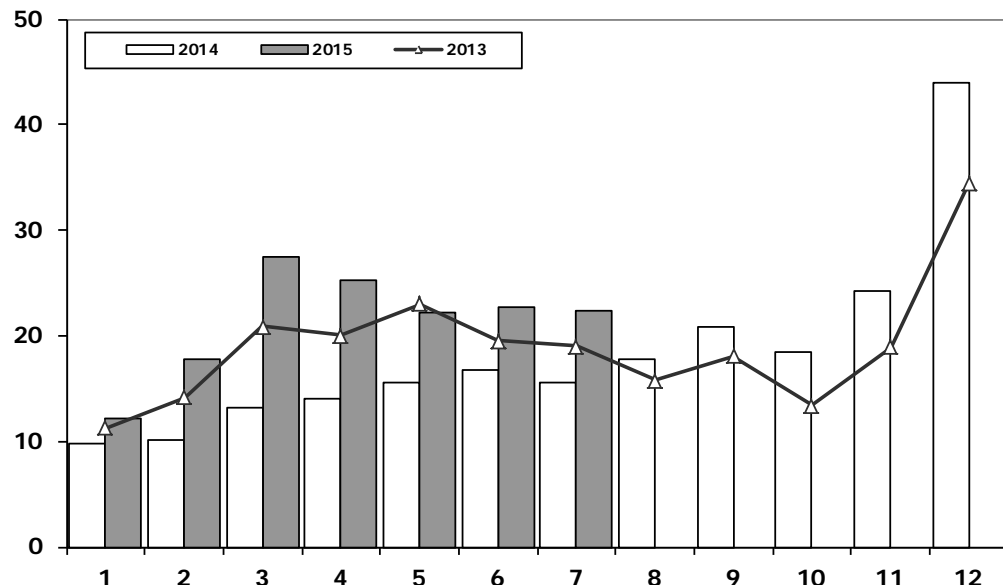
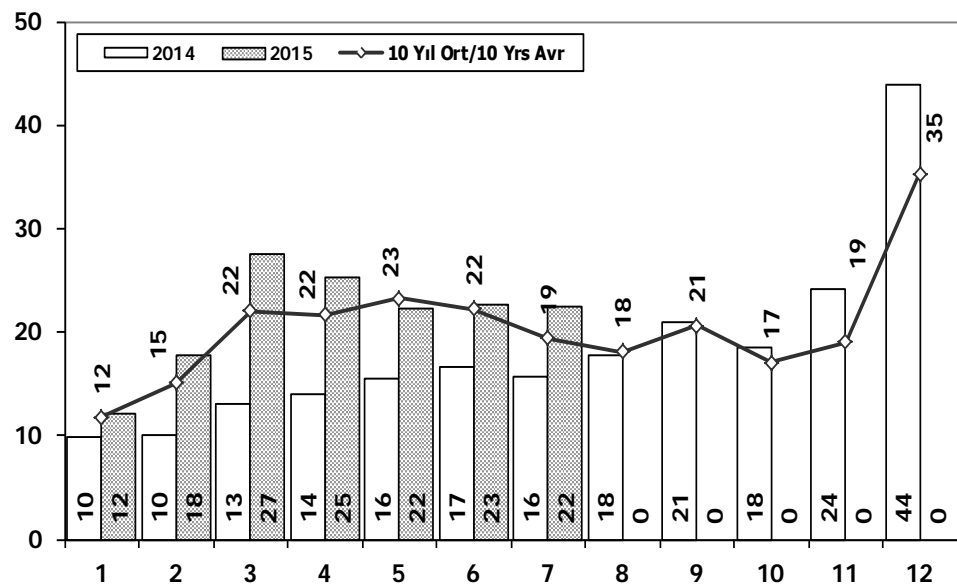
## Otomobil Pazarı (x1000)

P.Cars Market (x1000)



Aylar / Months	10 Yil Ort. 10 Yrs Avr. (x1000)	2015 (x1000)	%
1	20,0	24,5	22,7
2	27,1	40,8	50,4
3	42,3	61,7	45,9
4	43,8	70,2	60,3
5	47,2	62,9	33,2
6	45,6	67,8	48,7
7	38,9	64,2	65,1
<b>Total</b>	<b>264,9</b>	<b>392,1</b>	<b>48,0</b>

	1	2	3	4	5	6	7	8	9	10	11	12	7 Ay/Mo	Total
2005	11.595	21.012	38.129	36.206	38.480	40.900	38.969	38.648	36.410	34.960	37.841	65.447	225.291	438.597
2006	16.506	24.929	36.996	40.177	48.521	32.982	22.653	24.873	27.517	21.237	30.477	46.351	222.764	373.219
2007	13.186	17.212	24.336	25.204	29.067	30.126	28.246	28.469	27.662	32.569	39.643	61.745	167.377	357.465
2008	18.588	21.196	34.147	30.313	31.477	28.724	25.530	26.102	27.053	19.788	17.201	25.879	189.975	305.998
2009	13.173	14.492	40.622	36.202	44.188	41.019	16.637	22.537	52.162	13.828	17.781	57.178	206.333	369.819
2010	12.594	20.651	33.958	36.549	40.467	42.086	41.399	42.222	42.477	47.859	50.061	99.461	227.704	509.784
2011	29.868	39.004	54.023	53.835	56.302	56.714	43.518	38.875	39.964	47.508	44.951	88.957	333.264	593.519
2012	21.077	29.189	47.270	45.645	50.460	50.849	44.531	41.236	49.360	43.440	52.297	80.926	289.021	556.280
2013	25.835	36.814	51.785	56.999	62.383	58.290	55.712	51.611	52.925	46.985	64.117	101.199	347.818	664.655
2014	24.368	27.167	37.812	42.769	46.379	47.278	46.602	45.131	49.262	50.814	59.695	110.054	272.375	587.331
2015	24.498	40.817	61.676	70.211	62.878	67.766	64.218	0	0	0	0	0	392.064	392.064

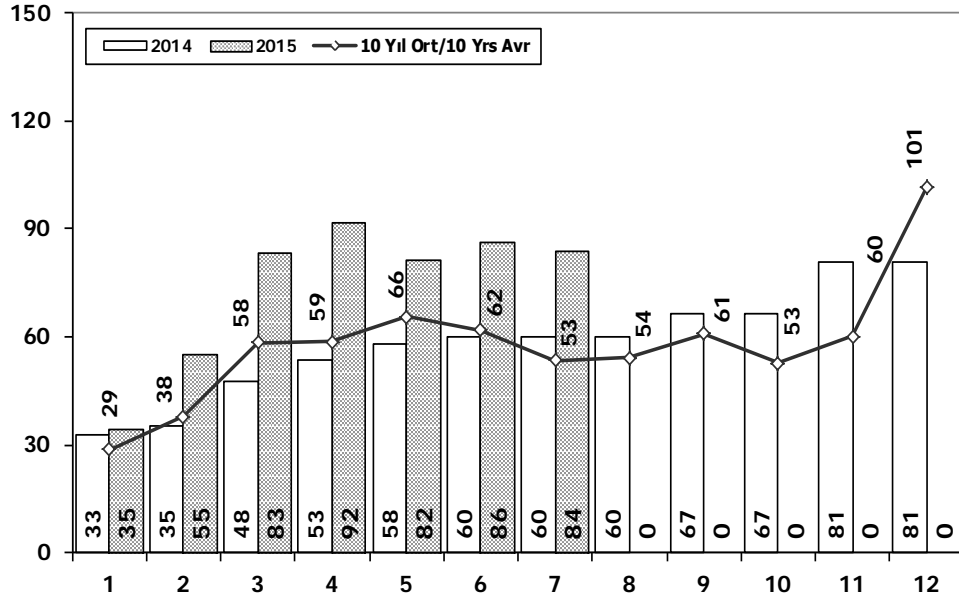


Aylar / Months	10 Yıl Ort. 10 Yrs Avr. (x1000)	2015 (x1000)	%
1	11,8	12,1	2,8
2	15,1	17,7	17,2
3	22,0	27,4	24,6
4	21,6	25,2	16,6
5	23,3	22,3	-4,4
6	22,3	22,7	1,9
7	19,4	22,4	15,6
<b>Total</b>	<b>135,5</b>	<b>149,8</b>	<b>10,6</b>

	1	2	3	4	5	6	7	8	9	10	11	12	7 Ay/Mo	Total
2005	11.092	17.279	26.373	24.667	32.903	23.479	24.878	29.999	30.170	25.831	27.878	45.391	160.671	319.940
2006	13.463	19.717	28.094	28.676	34.768	25.221	17.384	22.501	22.112	18.568	25.421	36.371	167.323	292.296
2007	11.764	14.490	21.152	20.429	22.188	21.535	21.871	25.702	22.416	23.489	27.374	44.331	133.429	276.741
2008	15.204	16.925	22.667	20.654	20.150	20.669	19.162	20.490	19.776	15.359	10.951	18.539	135.431	220.546
2009	7.458	8.354	15.909	18.224	20.699	22.083	13.609	14.555	31.241	8.289	11.421	34.208	106.336	206.050
2010	8.456	11.662	19.870	20.530	21.161	21.304	22.319	22.423	24.124	28.921	27.345	55.273	125.302	283.388
2011	17.790	23.344	29.310	28.236	28.791	29.149	21.846	22.503	23.679	25.132	22.244	45.324	178.466	317.348
2012	10.142	14.638	21.687	20.369	24.360	23.932	20.591	19.612	23.837	19.237	22.748	40.187	135.719	261.340
2013	11.305	14.117	20.903	20.016	23.038	19.481	19.014	15.772	18.112	13.414	18.900	34.397	127.874	228.469
2014	9.857	10.141	13.152	13.997	15.530	16.674	15.604	17.708	20.918	18.445	24.242	43.887	94.955	220.155
2015	12.081	17.715	27.445	25.220	22.266	22.696	22.404	0	0	0	0	0	149.827	149.827

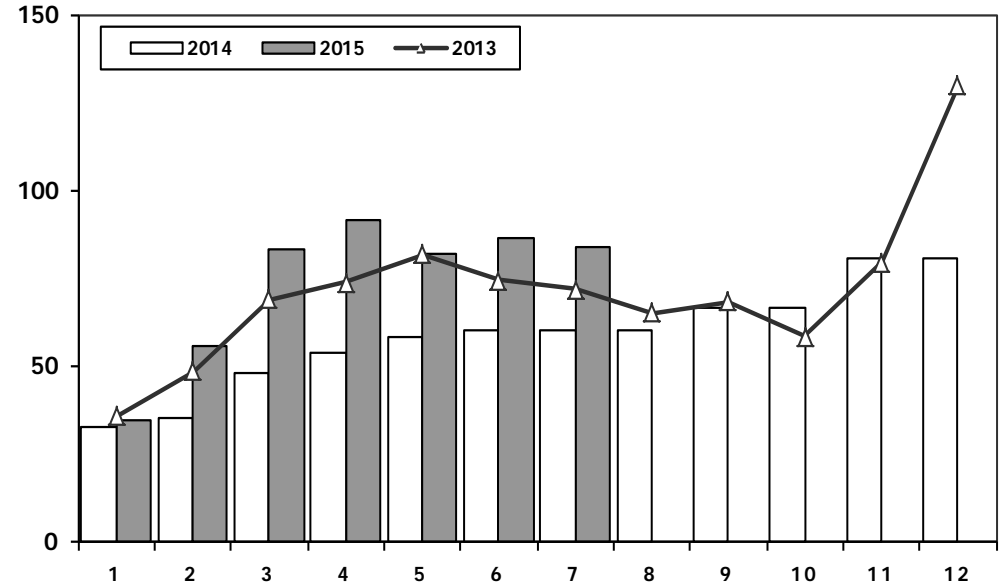
## Hafif Araç Pazarının Analizi (x1000)

### LV Market Analysis (x1000)



## Hafif Araç Pazarı (x1000)

### LV Total Market (Local + Imports) (x1000)



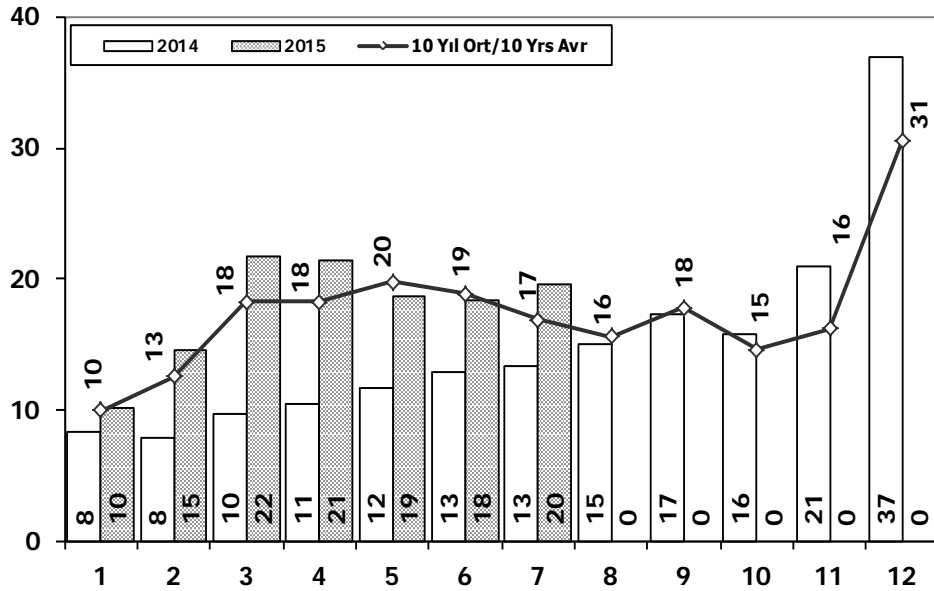
Aylar / Months	10 Yil Ort. 10 Yrs Avr. (x1000)	2015 (x1000)	%
1	28,6	34,6	21,2
2	37,7	55,3	46,6
3	58,3	83,3	42,9
4	58,6	91,6	56,3
5	65,6	81,5	24,3
6	61,9	86,2	39,2
7	53,5	83,8	56,7
<b>Total</b>	<b>364,2</b>	<b>516,4</b>	<b>41,8</b>

	1	2	3	4	5	6	7	8	9	10	11	12	7 Ay/Mo	Total
2005	20.747	35.766	60.707	56.844	67.357	60.796	61.015	64.011	61.954	56.638	61.364	103.209	363.232	710.408
2006	27.917	40.938	60.052	64.038	78.229	54.355	37.251	43.767	46.109	36.542	51.867	76.787	362.780	617.852
2007	23.117	29.184	41.890	42.366	47.938	48.674	47.490	50.558	46.581	52.725	63.313	100.926	280.659	594.762
2008	31.527	35.251	53.649	47.701	48.598	46.324	42.156	43.670	43.932	32.884	26.253	42.078	305.206	494.023
2009	19.606	21.742	55.111	52.640	63.191	61.067	28.845	35.609	81.397	21.033	27.962	88.923	302.202	557.126
2010	20.095	31.172	51.769	54.946	59.377	60.896	61.345	61.764	63.814	73.404	73.962	148.369	339.600	760.913
2011	44.892	58.663	78.403	77.695	80.646	81.573	63.044	58.406	60.129	69.421	63.657	127.910	484.916	864.439
2012	29.545	41.324	64.884	62.949	70.863	71.067	62.304	58.148	69.629	59.938	71.710	115.400	402.936	777.761
2013	35.523	48.307	68.774	73.575	81.468	74.096	71.596	65.043	67.963	58.014	79.301	129.718	453.339	853.378
2014	32.670	35.021	47.581	53.305	58.121	60.163	59.907	60.199	66.531	66.573	80.621	80.621	346.768	701.313
2015	34.615	55.331	83.302	91.602	81.542	86.158	83.836	0	0	0	0	0	516.386	516.386



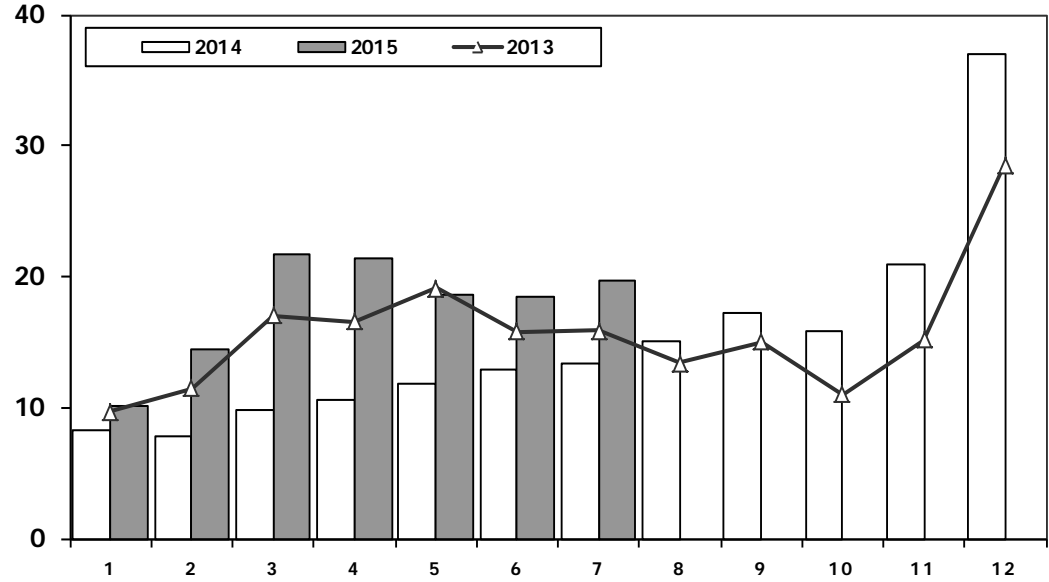
## Hafif Ticari Araç Pazarının Analizi (x1000)

LCV Market Analysis (x1000)



## Hafif Ticari Araç Pazarı (x1000)

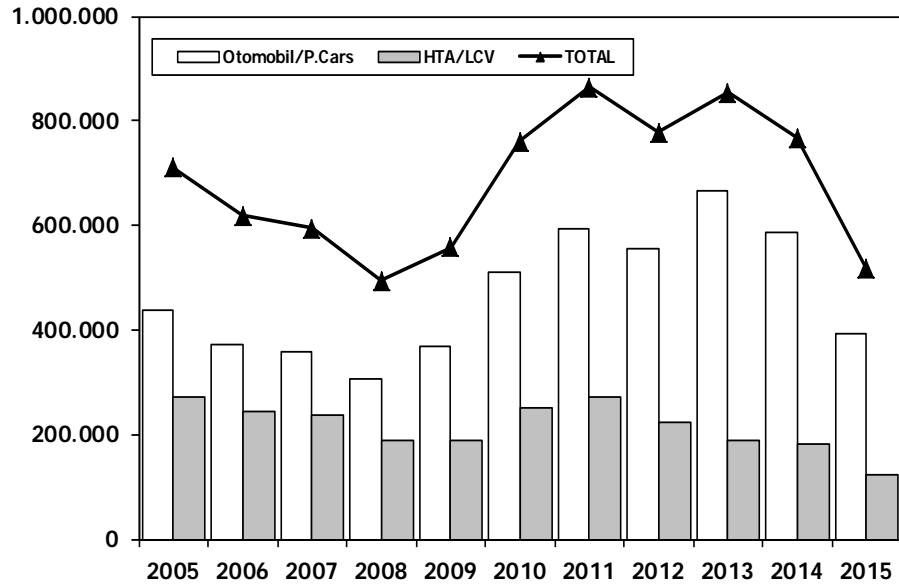
LCV Total Market (Local + Imports) (x1000)



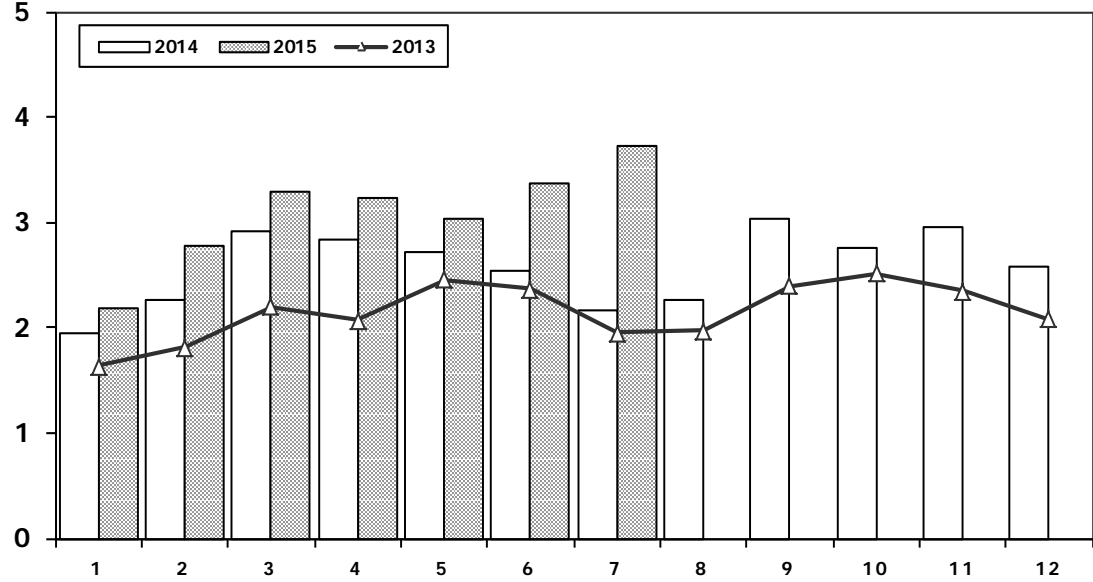
Aylar / Months	10 Yıl Ort. 10 Yrs Avr. (x1000)	2015 (x1000)	%
1	10,0	10,1	1,4
2	12,5	14,5	15,7
3	18,3	21,6	18,3
4	18,3	21,4	16,9
5	19,8	18,7	-5,7
6	18,9	18,4	-2,4
7	16,9	19,6	16,3
<b>Total</b>	<b>114,6</b>	<b>124,3</b>	<b>8,5</b>

	1	2	3	4	5	6	7	8	9	10	11	12	7 Ay/Mo	Total
2005	9.152	14.754	22.578	20.638	28.877	19.896	22.046	25.363	25.544	21.678	23.523	37.762	137.941	271.811
2006	11.411	16.009	23.056	23.861	29.708	21.373	14.598	18.894	18.592	15.305	21.390	30.436	140.016	244.633
2007	9.931	11.972	17.554	17.162	18.871	18.548	19.244	22.089	18.919	20.156	23.670	39.181	113.282	237.297
2008	12.939	14.055	19.502	17.388	17.121	17.600	16.626	17.568	16.879	13.096	9.052	16.199	115.231	188.025
2009	6.433	7.250	14.489	16.438	19.003	20.048	12.208	13.072	29.235	7.205	10.181	31.745	95.869	187.307
2010	7.501	10.521	17.811	18.397	18.910	18.810	19.946	19.542	21.337	25.545	23.901	48.908	111.896	251.129
2011	15.024	19.659	24.380	23.860	24.344	24.859	19.526	19.531	20.165	21.913	18.706	38.953	151.652	270.920
2012	8.468	12.135	17.614	17.304	20.403	20.218	17.773	16.912	20.269	16.498	19.413	34.474	113.915	221.481
2013	9.688	11.493	16.989	16.576	19.085	15.806	15.884	13.432	15.038	11.029	15.184	28.519	105.521	188.723
2014	8.302	7.854	9.769	10.536	11.742	12.885	13.305	15.068	17.269	15.759	20.926	36.935	74.393	180.350
2015	10.117	14.514	21.626	21.391	18.664	18.392	19.618	0	0	0	0	0	124.322	124.322

## Hafif Araç Pazarı (AYA < 3.5 Ton) Light Vehicle Market (GVW < 3.5 Ton)



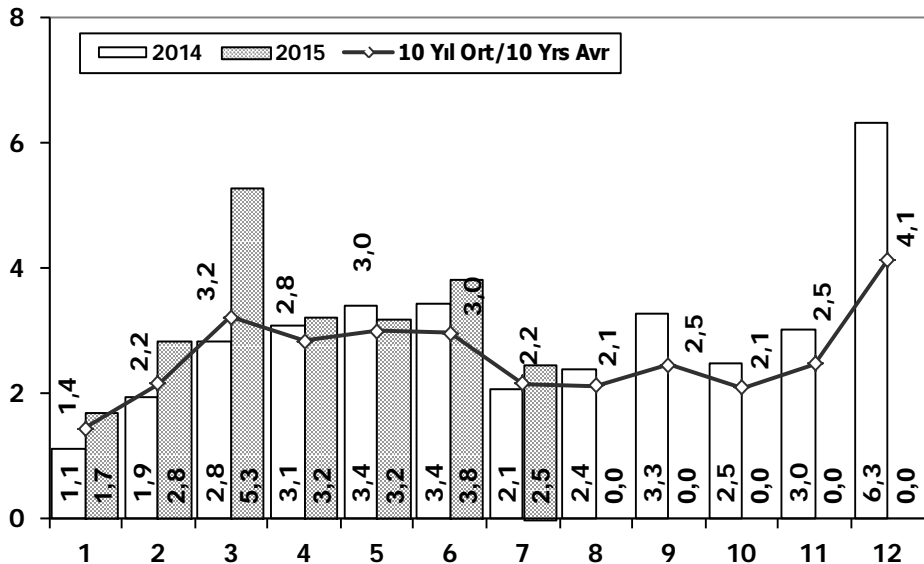
## Traktör Pazarı (x1000) F.Tractor Market (x1000)



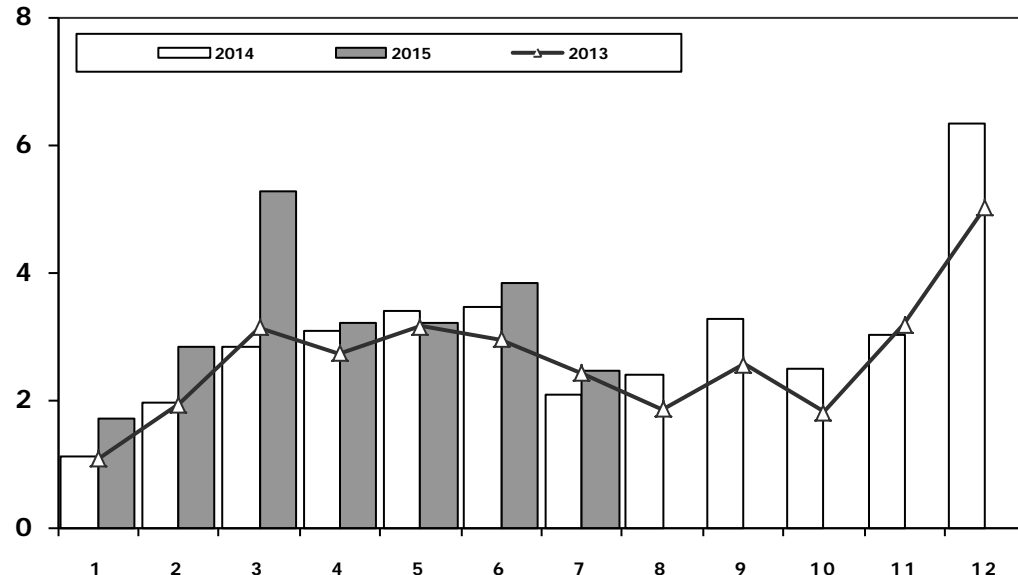
	2005	2006	2007	2008	2009	2010	2011	2012	2013	2014	2015
Otomobil/P.Cars	438.597	373.219	357.465	305.998	369.819	509.784	593.519	556.280	664.655	587.331	392.064
HTA/LCV	271.811	244.633	237.297	188.025	187.307	251.129	270.920	221.481	188.723	180.350	124.322
TOTAL	710.408	617.852	594.762	494.023	557.126	760.913	864.439	777.761	853.378	767.681	516.386
HTA/LCV (%)	38	40	40	38	34	33	31	28	22	23	24

	1	2	3	4	5	6	7	8	9	10	11	12	7 Ay/Mo	Total
2005	1.026	1.636	2.001	2.599	2.569	2.780	2.148	2.819	2.567	2.477	2.297	2.089	14.759	27.008
2006	1.578	2.493	2.746	2.841	3.561	2.356	1.685	2.177	2.756	1.915	2.353	1.925	17.260	28.386
2007	1.812	1.778	2.063	2.107	2.266	1.853	1.653	2.065	2.372	2.239	2.231	1.602	13.532	24.041
2008	1.510	1.427	1.933	1.692	1.689	1.592	1.275	924	904	609	707	359	11.118	14.621
2009	267	344	388	638	759	828	741	534	586	765	725	715	3.965	7.290
2010	714	903	1.432	1.653	1.736	1.673	1.613	1.527	2.351	2.787	2.656	2.345	9.724	21.390
2011	2.458	2.610	3.105	3.403	3.847	3.599	2.952	1.559	2.957	2.823	2.603	2.807	21.974	34.723
2012	2.216	2.632	3.223	3.259	3.067	2.821	2.037	1.262	1.648	1.858	1.921	1.579	19.255	27.523
2013	1.633	1.817	2.196	2.070	2.455	2.370	1.955	1.969	2.396	2.510	2.343	2.080	14.496	25.794
2014	1.941	2.256	2.915	2.837	2.723	2.534	2.171	2.265	3.039	2.755	2.964	2.573	17.377	30.973
2015	2.187	2.767	3.297	3.235	3.039	3.366	3.730	0	0	0	0	0	21.621	21.621

## Kamyon Pazarının Analizi (x1000) AYA > 5 Ton Truck Market Analysis (x1000) GVW > 5 Ton



## Kamyon Pazarı (x1000) AYA > 5 Ton Truck Market (x1000) GVW > 5 Ton

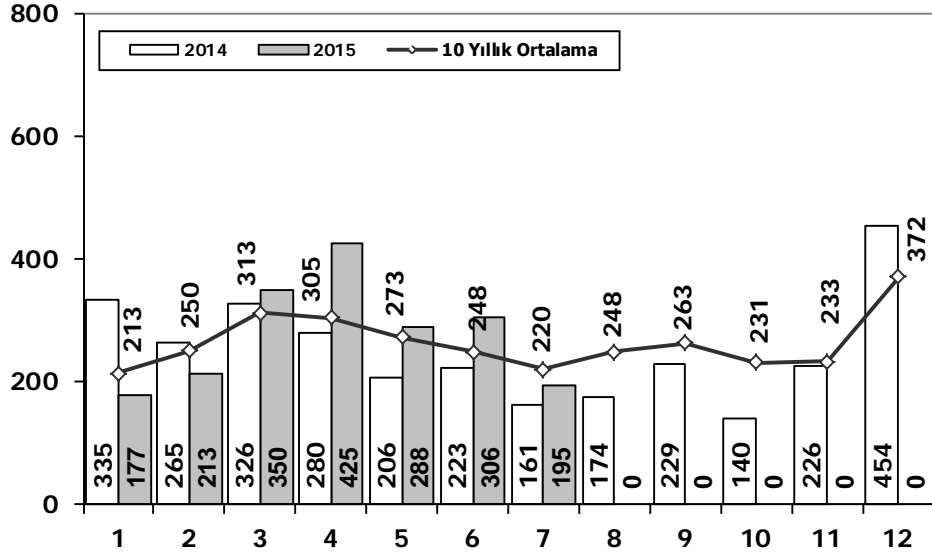


Aylar / Months	10 Yil Ort. 10 Yrs Avr. (x1000)	2015 (x100)	%
1	1,4	1,7	17,8
2	2,2	2,8	31,7
3	3,2	5,3	63,7
4	2,8	3,2	13,3
5	3,0	3,2	6,5
6	3,0	3,8	29,1
7	2,2	2,5	14,1
<b>Total</b>	<b>17,8</b>	<b>22,5</b>	<b>26,6</b>

	1	2	3	4	5	6	7	8	9	10	11	12	7 Ay/Mo	Total
2005	1.693	2.186	3.288	3.484	3.413	3.147	2.504	4.028	4.043	3.708	3.918	6.570	19.715	41.982
2006	1.767	3.310	4.467	4.180	4.449	3.398	2.472	3.142	3.052	2.926	3.550	5.358	24.043	42.071
2007	1.554	2.055	3.065	2.940	2.865	2.613	2.372	3.145	2.988	2.886	3.258	4.444	17.464	34.185
2008	1.797	2.309	2.621	2.578	2.459	2.526	2.067	2.377	2.390	1.790	1.512	1.834	16.357	26.260
2009	771	759	1.034	1.342	1.355	1.651	1.156	1.205	1.780	866	981	2.015	8.068	14.915
2010	777	968	1.772	1.807	1.966	2.205	2.093	2.446	2.444	3.071	3.136	5.677	11.588	28.362
2011	2.552	3.292	4.418	3.754	3.803	3.749	1.996	2.478	3.081	2.774	3.108	5.787	23.564	40.792
2012	1.375	2.159	3.595	2.697	3.321	3.250	2.450	2.277	2.991	2.244	3.006	5.000	18.847	34.365
2013	1.077	1.931	3.127	2.720	3.145	2.951	2.411	1.845	2.554	1.801	3.173	5.025	17.362	31.760
2014	1.117	1.949	2.818	3.092	3.405	3.438	2.083	2.390	3.281	2.494	3.028	6.313	17.902	35.408
2015	1.708	2.840	5.270	3.208	3.189	3.823	2.460	0	0	0	0	0	22.498	22.498

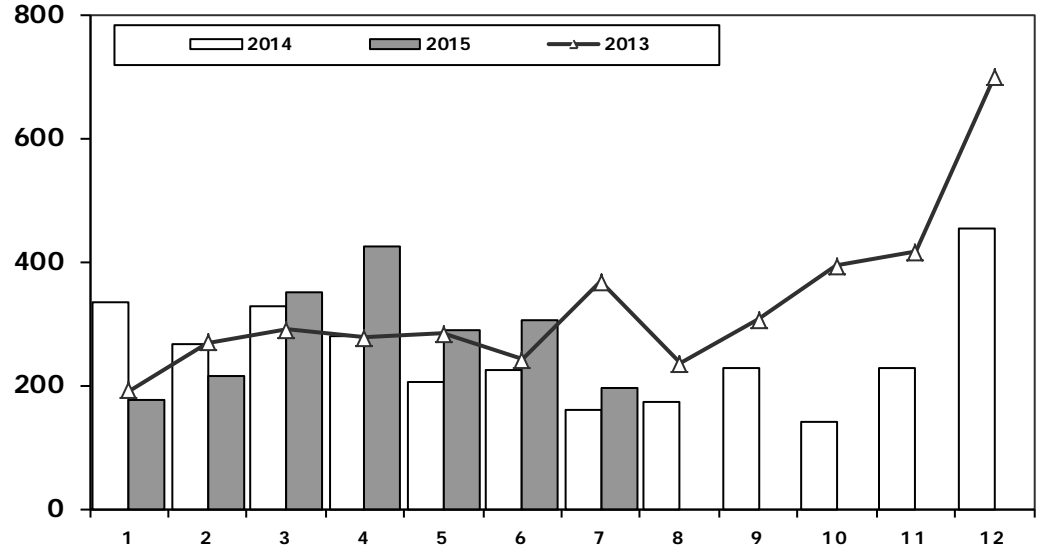
## Midibüs Pazarının Analizi (7-9 mt / 25-35 Kişilik)

### Midibus Market Analysis (7-9 mt / 25-35 Passengers)



## Midibüs Pazarı (7-9 mt / 25-35 Kişilik Midibüs)

### Midibus Market (7-9 mt / 25-35 Passengers)

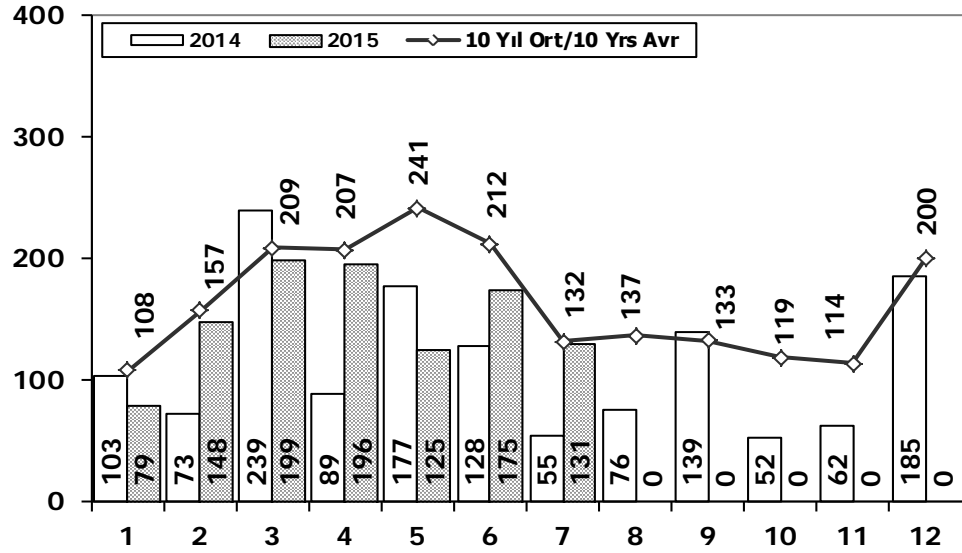


Aylar / Months	10 Yıl Ort. / 10 Yrs Avr.	2015	%
1	213	177	-17
2	250	213	-15
3	313	350	12
4	305	425	39
5	273	288	5
6	248	306	23
7	220	195	-11
<b>Total</b>	<b>1.822</b>	<b>1.954</b>	<b>7</b>

	1	2	3	4	5	6	7	8	9	10	11	12	7 Ay/Mo	Total
2005	182	258	432	393	439	269	252	459	436	329	328	574	2.225	4.351
2006	207	297	406	388	381	266	230	353	322	253	305	401	2.175	3.809
2007	207	272	404	238	302	283	164	365	399	279	283	465	1.870	3.661
2008	391	476	436	512	419	331	368	380	341	352	246	270	2.933	4.522
2009	154	124	160	220	174	198	160	175	168	143	206	323	1.190	2.205
2010	155	131	185	167	140	138	129	246	236	206	202	437	1.045	2.372
2011	138	195	294	316	280	258	211	305	301	276	260	270	1.692	3.104
2012	179	257	277	229	257	239	216	249	325	269	189	398	1.654	3.084
2013	191	268	289	276	283	241	367	235	305	392	415	697	1.915	3.959
2014	335	265	326	280	206	223	161	174	229	140	226	454	1.796	3.019
2015	177	213	350	425	288	306	195	0	0	0	0	0	1.954	1.954

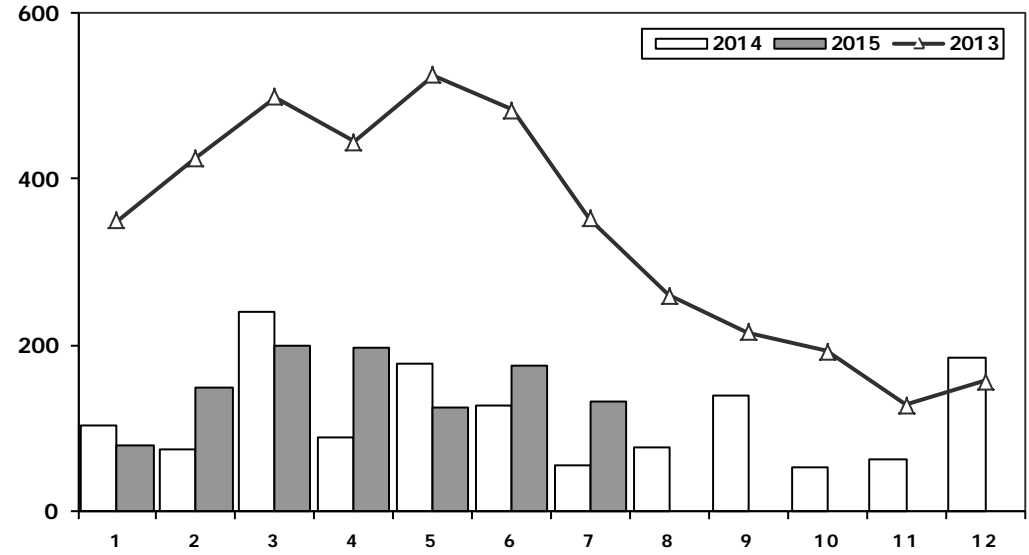
## Otobüs Pazarının Analizi

Bus Market Analysis



## Otobüs Pazarı

Bus Market

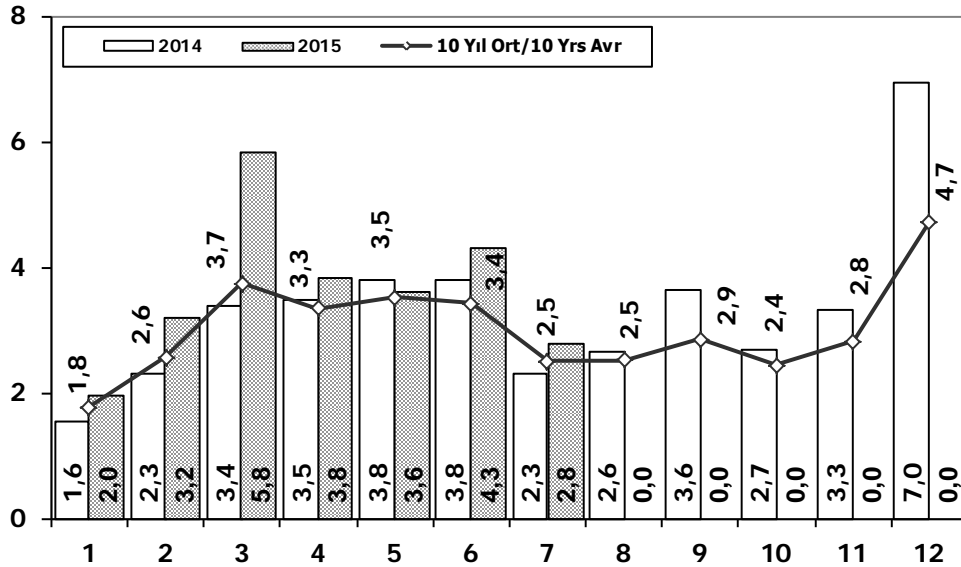


Aylar / Months	10 Yıl Ort. / 10 Yrs Avr.	2015	%
1	108	79	-27
2	157	148	-6
3	209	199	-5
4	207	196	-5
5	241	125	-48
6	212	175	-17
7	132	131	0
<b>Total</b>	<b>1.265</b>	<b>1.053</b>	<b>-17</b>

	1	2	3	4	5	6	7	8	9	10	11	12	7 Ay/Mo	Total
2005	65	81	75	152	174	167	76	149	147	116	109	485	790	1.796
2006	78	101	165	247	230	184	84	112	146	84	176	176	1.089	1.783
2007	72	191	129	89	150	91	91	103	110	168	163	241	813	1.598
2008	77	85	108	176	151	212	101	165	166	121	141	236	910	1.739
2009	100	221	226	224	167	186	85	103	58	75	53	125	1.209	1.623
2010	23	42	102	159	145	151	151	189	107	99	106	251	773	1.525
2011	76	198	218	306	364	283	113	189	132	169	170	314	1.558	2.532
2012	120	87	201	139	379	225	152	174	252	226	140	315	1.303	2.410
2013	349	425	498	444	525	483	352	260	215	192	128	156	3.076	4.027
2014	103	73	239	89	177	128	55	76	139	52	62	185	864	1.378
2015	79	148	199	196	125	175	131	0	0	0	0	0	1.053	1.053

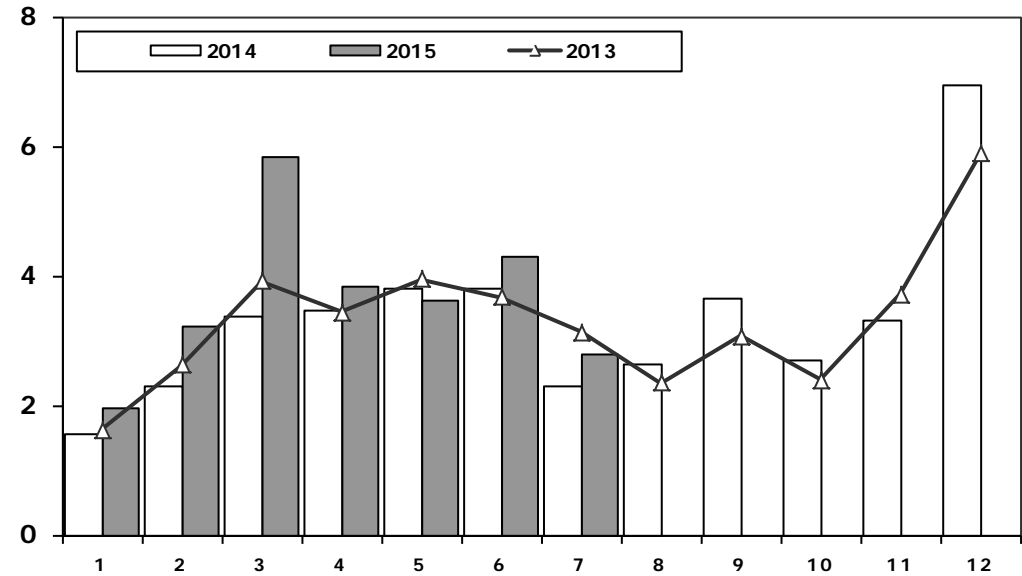
## Ağır Ticari Araç Pazarının Analizi (x1000)

HCV Market Analysis (x1000)



## Ağır Ticari Araç Pazarı (x1000)

HCV Market (x1000)

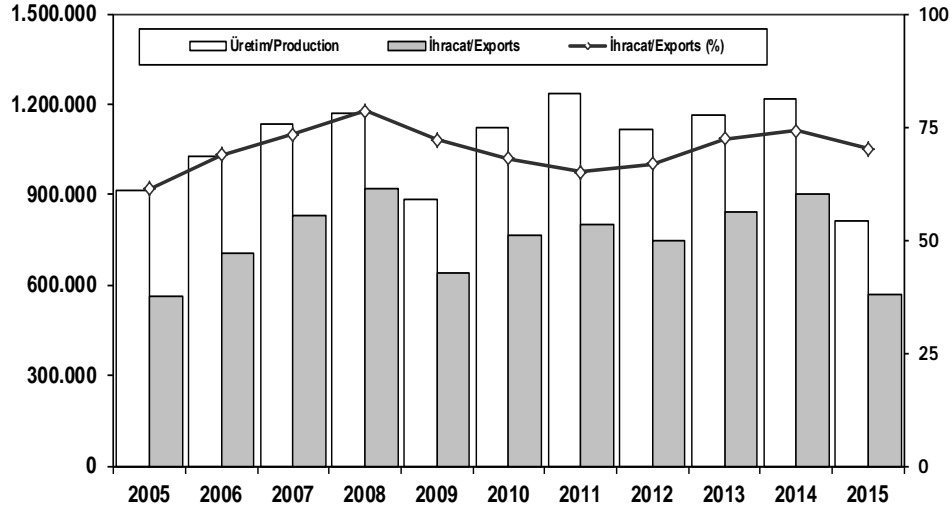


Aylar / Months	10 Yil Ort. 10 Yrs Avr. (x1000)	2015 (x1000)	%
1	1,8	2,0	10,9
2	2,6	3,2	24,8
3	3,7	5,8	55,6
4	3,3	3,8	14,5
5	3,5	3,6	2,6
6	3,4	4,3	25,8
7	2,5	2,8	11,1
<b>Total</b>	<b>20,9</b>	<b>25,5</b>	<b>22,3</b>

	1	2	3	4	5	6	7	8	9	10	11	12	7 Ay/Mo	Total
2005	1.940	2.525	3.795	4.029	4.026	3.583	2.832	4.636	4.626	4.153	4.355	7.629	22.730	48.129
2006	2.052	3.708	5.038	4.815	5.060	3.848	2.786	3.607	3.520	3.263	4.031	5.935	27.307	47.663
2007	1.833	2.518	3.598	3.267	3.317	2.987	2.627	3.613	3.497	3.333	3.704	5.150	20.147	39.444
2008	2.265	2.870	3.165	3.266	3.029	3.069	2.536	2.922	2.897	2.263	1.899	2.340	20.200	32.521
2009	1.025	1.104	1.420	1.786	1.696	2.035	1.401	1.483	2.006	1.084	1.240	2.463	10.467	18.743
2010	955	1.141	2.059	2.133	2.251	2.494	2.373	2.881	2.787	3.376	3.444	6.365	13.406	32.259
2011	2.766	3.685	4.930	4.376	4.447	4.290	2.320	2.972	3.514	3.219	3.538	6.371	26.814	46.428
2012	1.674	2.503	4.073	3.065	3.957	3.714	2.818	2.700	3.568	2.739	3.335	5.713	21.804	39.859
2013	1.617	2.624	3.914	3.440	3.953	3.675	3.130	2.340	3.074	2.385	3.716	5.878	22.353	39.746
2014	1.555	2.287	3.383	3.461	3.788	3.789	2.299	2.640	3.649	2.686	3.316	6.952	20.562	39.805
2015	1.964	3.201	5.819	3.829	3.602	4.304	2.786	0	0	0	0	0	25.505	25.505

## İhracat/Üretim (2005-2015)

Exports/Production (2005-2015)



	2005	2006	2007	2008	2009	2010	2011	2012	2013	2014	2015
Üretim/Production	916.062	1.026.427	1.132.951	1.171.917	884.466	1.124.982	1.234.637	1.115.233	1.166.043	1.218.848	809.832
İhracat/Exports	561.078	706.402	829.879	920.763	637.855	763.670	801.112	745.354	843.467	902.194	568.275
İhracat/Exports (%)	61	69	73	79	72	68	65	67	72	74	70

## Taşıt Araçları İhracatı (2013-2015)

Motor Vehicle Exports (2013-2015)

SEKTÖR/SECTOR	2013	2014	2014 / 2015		2014/2015 (%)
			7 Ay - 7 Mo		
OTOMOBİL/ P.Cars	484.504	581.993	352.660	341.165	-3
TİCARİ ARAÇLAR/ CV	343.967	303.187	179.366	218.967	22
* Kamyonet/Pick-Up	300.765	269.995	162.196	187.315	15
* Minibüs/Minibus	34.664	26.458	13.513	27.663	105
* Kamyon/Truck	3.055	1.281	684	642	-6
* Midibüs/Midibus	985	824	468	223	-52
* Otobüs/Bus	4.498	4.629	2.505	3.124	25
<b>TAŞIT ARAÇLARI /MV TOTAL</b>	<b>828.471</b>	<b>885.180</b>	<b>532.026</b>	<b>560.132</b>	<b>5</b>
TRAKTÖR/F.TRACTOR	14.996	17.014	9.831	8.143	-17
<b>TOTAL</b>	<b>843.467</b>	<b>902.194</b>	<b>541.857</b>	<b>568.275</b>	<b>5</b>

## Otomotiv Ana ve Yan Sanayii İhracatı (ABD \$)

CBU and CKD Exports - \$

SEKTÖR/SECTOR	2012 Toplam (Total)	2013 Toplam (Total)	2014 Toplam (Total)	2014 / 2015		2015/2014 (%)
				7 Ay (7 Months)		
<b>Toplam Yan Sanayi/Total Component Industry</b>	<b>8.215.954.295</b>	<b>9.065.017.539</b>	<b>9.508.032.776</b>	<b>5.772.947.849</b>	<b>5.047.719.975</b>	<b>-13</b>
İç ve Dış Lastik / Tyres	1.199.572.093	1.130.005.892	1.126.947.745	708.520.152	567.443.195	-20
Emniyet Camı / Safety Glasses	120.641.763	135.230.310	143.231.168	89.006.512	73.546.772	-17
Motor (Engine)	272.085.582	319.294.885	171.893.752	106.916.201	96.724.400	-10
Akümülatör / Batteries	250.104.807	306.451.449	289.150.764	150.529.251	115.807.279	-23
Diğer Aksam ve Parça / Spare Parts&Components	6.373.550.048	7.174.035.002	7.776.809.346	4.717.975.733	4.194.198.329	-11
<b>Toplam Ana Sanayi/Total Vehicle Industry</b>	<b>11.100.457.162</b>	<b>12.491.591.365</b>	<b>13.272.198.027</b>	<b>8.193.388.154</b>	<b>7.351.397.941</b>	<b>-10</b>
Otobüs / Bus	855.424.304	937.790.963	985.983.007	567.303.017	565.469.981	0
Midibüs-Minibüs / Minibus- Minibus	161.806.275	147.769.644	97.685.509	39.755.877	81.071.204	104
Otomobil (P. Cars)	6.068.045.119	6.855.475.590	7.270.836.596	4.591.869.189	4.037.915.218	-12
Kamyon-Kamyonet/HCV-LCV	3.433.310.999	3.918.798.755	4.201.921.030	2.595.821.461	2.313.432.707	-11
Çekici/Truck-Tractor	71.336.635	218.385.732	252.416.256	139.821.736	135.982.430	-3
Römork ve Yan Römork/Trailer-Semi Trailer	195.093.537	77.907.407	38.396.525	27.295.890	24.182.303	-11
Tarım Traktörü/Farm Tractor	315.440.294	335.463.275	424.959.103	231.520.984	193.344.097	-16
<b>Toplam/Total</b>	<b>19.316.411.457</b>	<b>21.556.608.904</b>	<b>22.780.230.802</b>	<b>13.966.336.003</b>	<b>12.399.117.915</b>	<b>-11</b>

Kaynak: Otomotiv Endüstrisi İhracatçıları Birliği

## Firma Bazında İhracat (Adet)

Export Of member Companies (Unit)

FİRMALAR Companies	2013	2014	Ocak-Temmuz 7 Months	
			2014	2015
OYAK RENAULT	266.508	257.992	153.627	154.857
FORD OTOSAN	208.722	187.921	108.877	138.505
HYUNDAI ASSAN	85.500	179.793	103.740	108.963
TOFAŞ	160.309	142.234	88.688	104.199
TOYOTA	86.908	109.517	72.725	47.248
TÜRK TRAKTÖR	14.402	15.866	9.125	7.771
M. BENZ TÜRK	5.331	3.438	1.849	2.313
HONDA TÜRKİYE	2.121	1.560	1.110	1.469
KARSAN	10.120	37	19	997
MAN TÜRKİYE	898	937	562	921
OTOKAR	620	580	242	394
HATTAT TARIM	594	1.148	706	372
TEMSA GLOBAL	663	423	179	146
A.I.O.S.	770	748	408	120
BMC	1	0	0	0
<b>GENEL TOPLAM</b>	<b>843.467</b>	<b>902.194</b>	<b>541.857</b>	<b>568.275</b>

Kaynak: OSD

## Sektör Bazında İhracat (\$)

Exports on Sectorial Basis

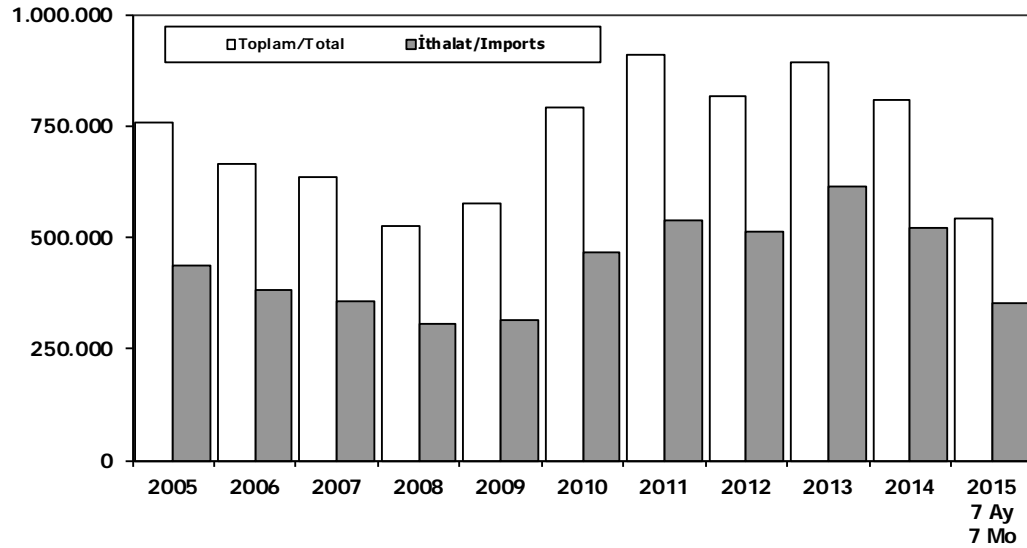
SEKTÖRLER	TEMMUZ				OCAK-TEMMUZ			
	2014	2015	2014/2015 (%)	2015 Pay (%)	2014	2015	2014/2015 (%)	2015 Pay (%)
1 Otomotiv Endüstrisi	1.988.596	1.644.332	-17,3	15,1	13.690.143	12.134.642	-11,4	14,4
2 Hazır giyim ve Konfeksiyon	1.720.102	1.497.048	-13,0	13,8	11.142.950	9.658.352	-13,3	11,4
3 Kimyevi Maddeler ve Mamulleri	1.570.477	1.322.393	-15,8	12,2	10.453.387	9.279.860	-11,2	11,0
4 Elektrik Elektronik ve Hizmet	982.480	826.886	-15,8	7,6	6.976.729	5.901.601	-15,4	7,0
5 Çelik	1.042.741	805.258	-22,8	7,4	8.047.731	6.147.344	-23,6	7,3
6 Tekstil ve Hammaddeleri	702.423	632.915	-9,9	5,8	5.221.704	4.627.788	-11,4	5,5
7 Demir ve Demir Dışı Metaller	585.635	529.881	-9,5	4,9	4.236.502	3.658.893	-13,6	4,3
8 Makine ve Aksamları	513.988	484.496	-5,7	4,5	3.536.043	3.208.586	-9,3	3,8
9 Hububat, Bakliyat, Yağlı Tohumlar ve Mam.	444.851	431.194	-3,1	4,0	3.862.824	3.493.743	-9,6	4,1
10 Madencilik Ürünleri	404.536	374.418	-7,4	3,4	2.777.153	2.356.834	-15,1	2,8
11 Mobilya, Kağıt ve Orman Ürünleri	374.374	349.886	-6,5	3,2	2.645.077	2.364.089	-10,6	2,8
12 İklimlendirme Sanayii	389.898	302.177	-22,5	2,8	2.655.309	2.133.186	-19,7	2,5
13 Çimento Cam Seramik ve Toprak Ürünleri	265.000	231.645	-12,6	2,1	1.901.815	1.648.771	-13,3	2,0
14 Fındık ve Mamulleri	157.458	228.213	44,9	2,1	1.077.153	1.582.085	46,9	1,9
15 Su Ürünleri ve Hayvansal Mamuller	175.808	153.159	-12,9	1,4	1.313.090	1.071.018	-18,4	1,3
16 Mücevher	122.862	151.284	23,1	1,4	1.268.317	1.570.002	23,8	1,9
17 Gemi ve Yat	122.443	149.306	21,9	1,4	685.171	592.510	-13,5	0,7
18 Halk	181.218	146.653	-19,1	1,4	1.326.209	1.145.892	-13,6	1,4
19 Deri ve Deri Mamulleri	168.805	118.629	-29,7	1,1	1.051.554	871.190	-17,2	1,0
20 Meyve Sebze Mamulleri	106.724	111.460	4,4	1,0	788.905	720.069	-8,7	0,9
21 Savunma ve Havacılık Sanayii	174.457	98.111	-43,8	0,9	952.219	828.738	-13,0	1,0
22 Yaş Meyve ve Sebze	94.578	94.076	-0,5	0,9	1.239.984	1.088.488	-12,2	1,3
23 Kuru Meyve ve Mamulleri	88.391	76.875	-13,0	0,7	743.097	657.074	-11,6	0,8
24 Tütün ve Mamulleri	68.873	73.121	6,2	0,7	596.263	531.732	-10,8	0,6
25 Zeytin ve Zeytinyağı	14.722	12.890	-12,4	0,1	144.282	121.070	-16,1	0,1
26 Diğer Sanayi Ürünleri	8.118	7.195	-11,4	0,1	69.193	60.775	-12,2	0,1
27 Sus Bitkileri	3.651	4.009	9,8	0,0	55.670	49.645	-10,8	0,1
<b>TOPLAM</b>	<b>12.473.211</b>	<b>10.857.507</b>	<b>-13,0</b>	<b>100,0</b>	<b>92.540.392</b>	<b>84.369.679</b>	<b>-8,8</b>	<b>100,0</b>

Kaynak: TİM

- First 3 Sectors:**
- 1- Transport Vehicle and Component Industry
  - 2- Ready Wear and Confection
  - 3- Chemical Articles and Products

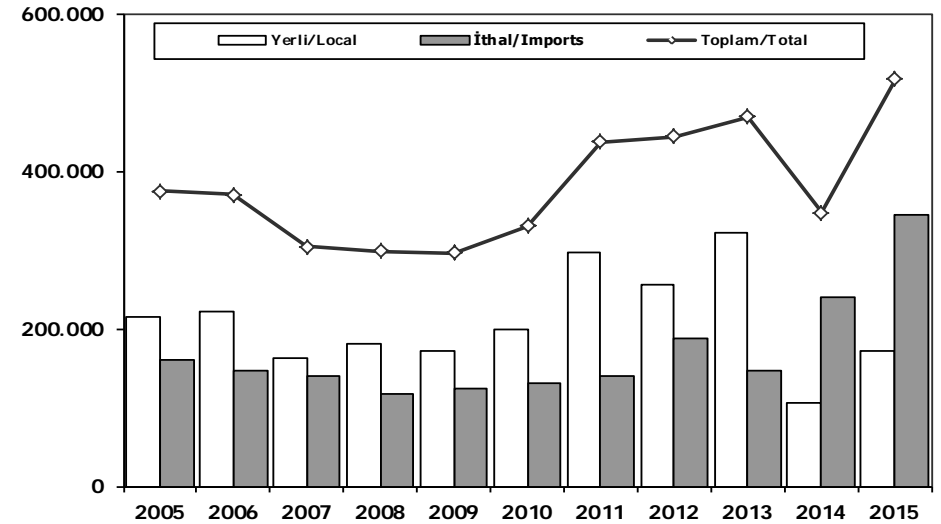


## Toplam Pazar (Otomobil+T.Araç) Total Market (P.Cars+C.V)



	2005	2006	2007	2008	2009	2010	2011	2012	2013	2014	2014 7 Ay 7 Mo	2015 7 Ay 7 Mo
<b>Toplam/Total</b>	758.537	665.515	634.206	526.544	575.869	793.172	910.867	817.620	893.124	807.486	367.330	541.891
<b>İthalat/Imports</b>	436.033	382.460	355.752	306.087	313.921	465.408	538.532	511.694	615.609	522.842	245.842	351.620
<b>İthalat/Imports (%)</b>	57	57	56	58	55	59	59	63	69	65	67	65

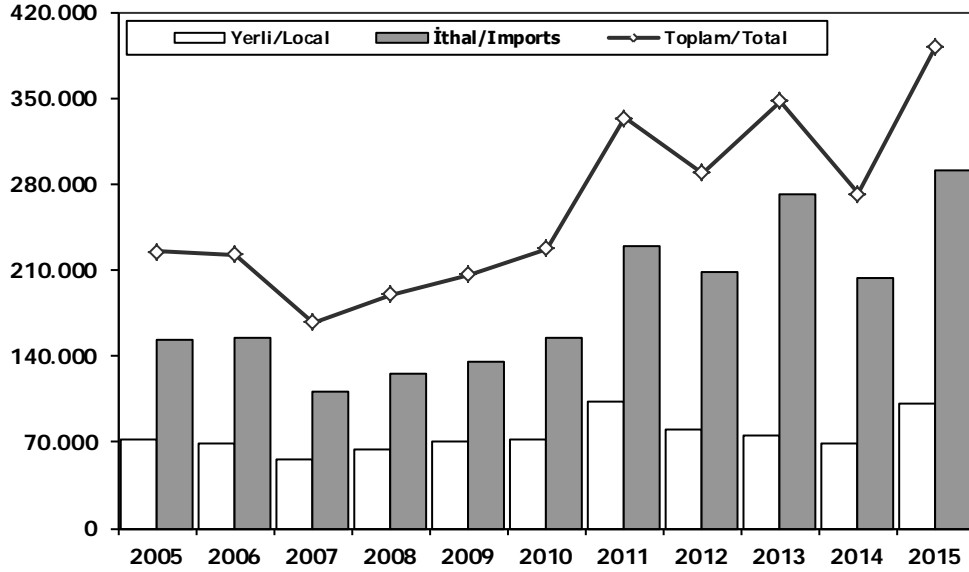
## Hafif Araçlar Pazarı (2005-2015 Ocak-Temmuz) LV Market (2005-2015 January-July)



	2005	2006	2007	2008	2009	2010	2011	2012	2013	2014	2015
<b>Yerli/Local</b>	215.684	222.607	163.301	180.627	171.288	199.272	297.060	256.284	322.097	106.223	171.483
<b>İthal/Imports</b>	159.219	147.548	140.173	117.358	124.579	130.914	140.328	187.856	146.652	240.545	344.903
<b>Toplam/Total</b>	374.903	370.155	303.474	297.985	295.867	330.186	437.388	444.140	468.749	346.768	516.386
<b>İthal/Imports (%)</b>	42	40	46	39	42	40	32	42	31	69	67

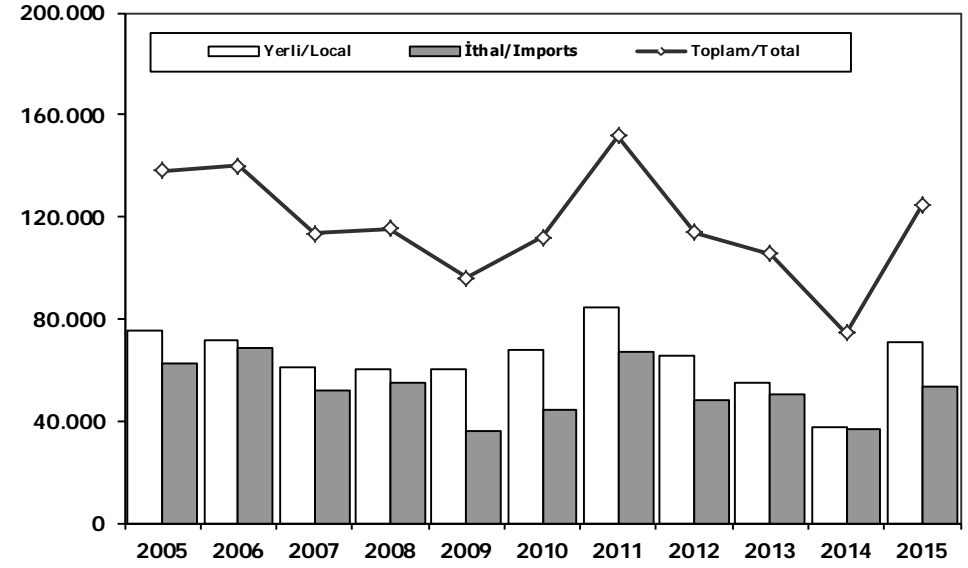
## Otomobil Pazarı (2005-2015 Ocak-Temmuz)

P.Cars Market (2005-2015 January-July)



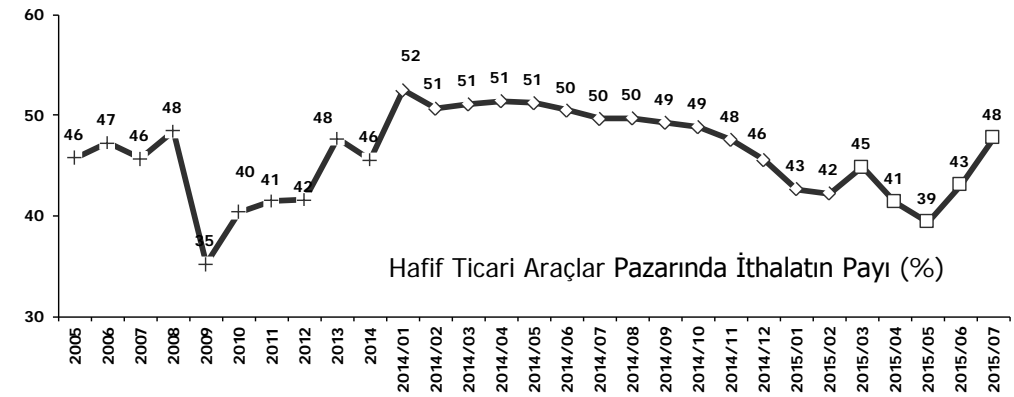
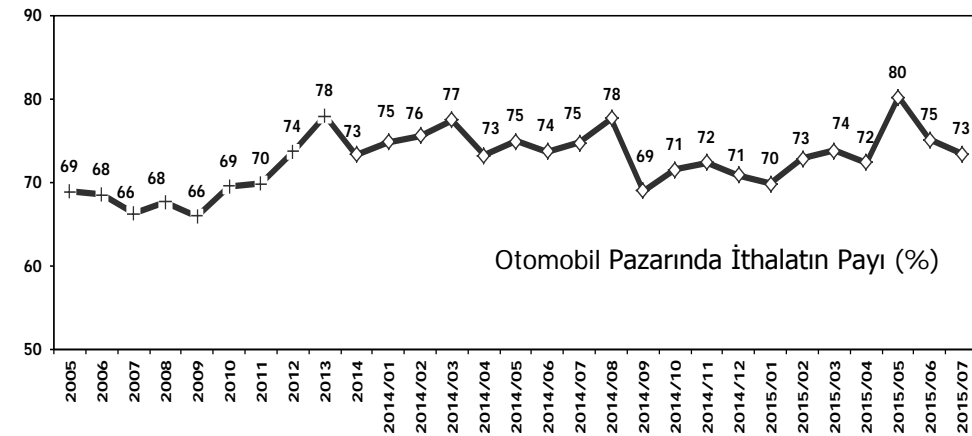
## Hafif Ticari Araçlar Pazarı (2005-2015 Ocak-Temmuz)

Light Commercial Vehicle Market (2005-2015 January-July)



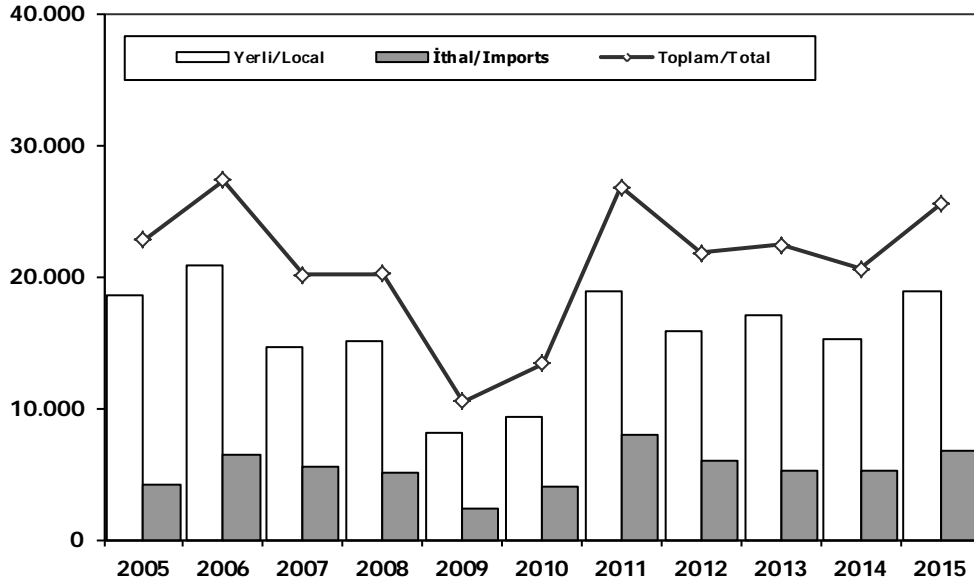
	2005	2006	2007	2008	2009	2010	2011	2012	2013	2014	2015
Yerli/Local	71.967	68.535	56.142	64.013	70.658	72.553	103.557	80.884	76.152	68.746	100.761
İthal/Imports	153.324	154.229	111.235	125.962	135.675	155.151	229.707	208.137	271.666	203.629	291.303
Toplam/Total	225.291	222.764	167.377	189.975	206.333	227.704	333.264	289.021	347.818	272.375	392.064
İthalat/Imports (%)	68	69	66	66	66	68	69	72	78	75	74

	2005	2006	2007	2008	2009	2010	2011	2012	2013	2014	2015
Yerli/Local	75.581	71.638	61.216	60.566	60.256	67.775	84.299	65.768	55.090	37.477	70.722
İthal/Imports	62.360	68.378	52.066	54.665	35.613	44.121	67.353	48.147	50.431	36.916	53.600
Toplam/Total	137.941	140.016	113.282	115.231	95.869	111.896	151.652	113.915	105.521	74.393	124.322
İthalat/Imports (%)	45	49	46	47	37	39	44	42	48	50	43



## Ağır Ticari Araçlar Pazarı (2005-2015 Ocak-Temmuz)

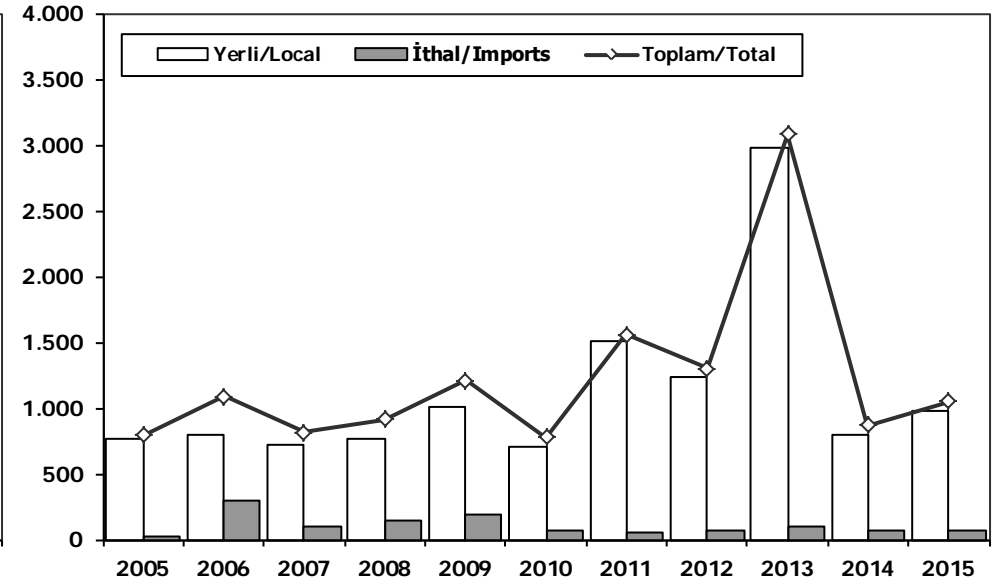
HCV Market (2005-2015 January-July)



	2005	2006	2007	2008	2009	2010	2011	2012	2013	2014	2015
Yerli/Local	18.525	20.885	14.622	15.075	8.056	9.345	18.834	15.788	17.094	15.265	18.788
İthal/Imports	4.205	6.422	5.525	5.125	2.411	4.061	7.980	6.016	5.259	5.297	6.717
Toplam/Total	22.730	27.307	20.147	20.200	10.467	13.406	26.814	21.804	22.353	20.562	25.505
İthalat/Imports (%)	18	24	27	25	23	30	30	28	24	26	26

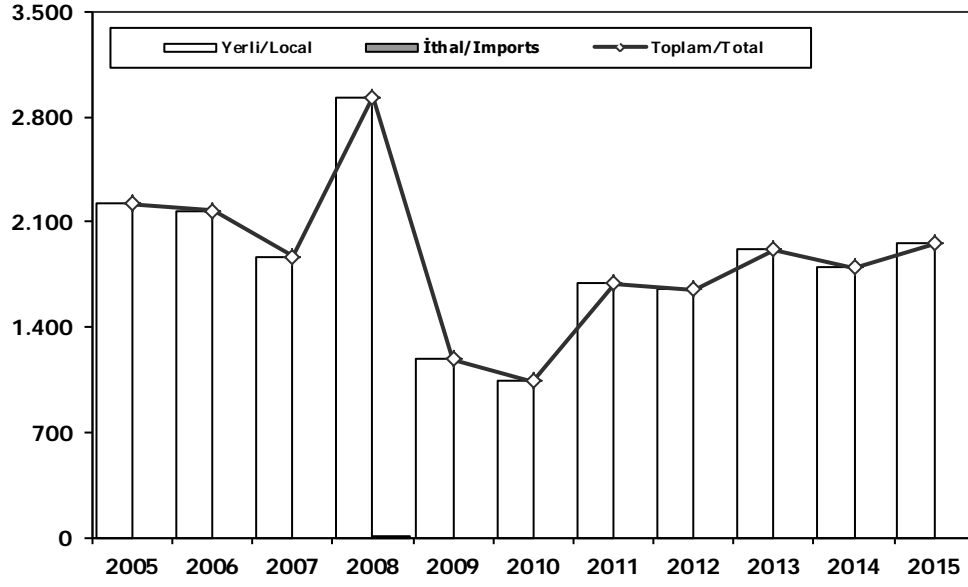
## Otobüs Pazarı (2005-2015 Ocak-Temmuz)

Bus Market (2005-2015 January-July)



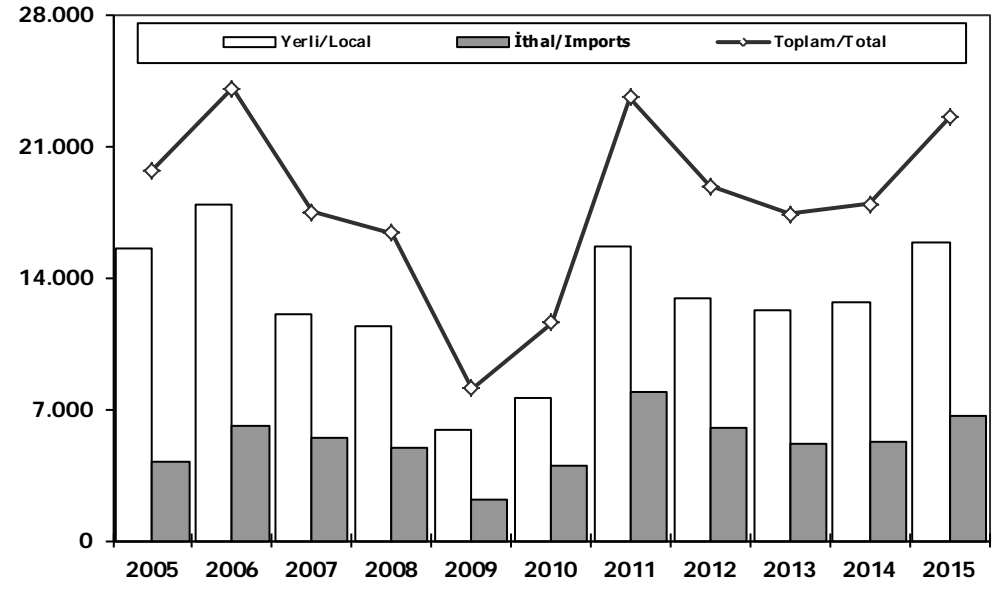
	2005	2006	2007	2008	2009	2010	2011	2012	2013	2014	2015
Yerli/Local	765	792	721	772	1.015	709	1.503	1.234	2.981	794	983
İthal/Imports	25	297	92	138	194	64	55	69	95	70	70
Toplam/Total	790	1.089	813	910	1.209	773	1.558	1.303	3.076	864	1.053
İthalat/Imports (%)	3	27	11	15	16	8	4	5	3	8	7

## Midibüs Pazarı (2005-2015 Ocak-Temmuz) (7-9 mt / 25-35 Kişilik) Midibus (2005-2015 January-July) Market (7-9 mt / 25-35 Passengers)



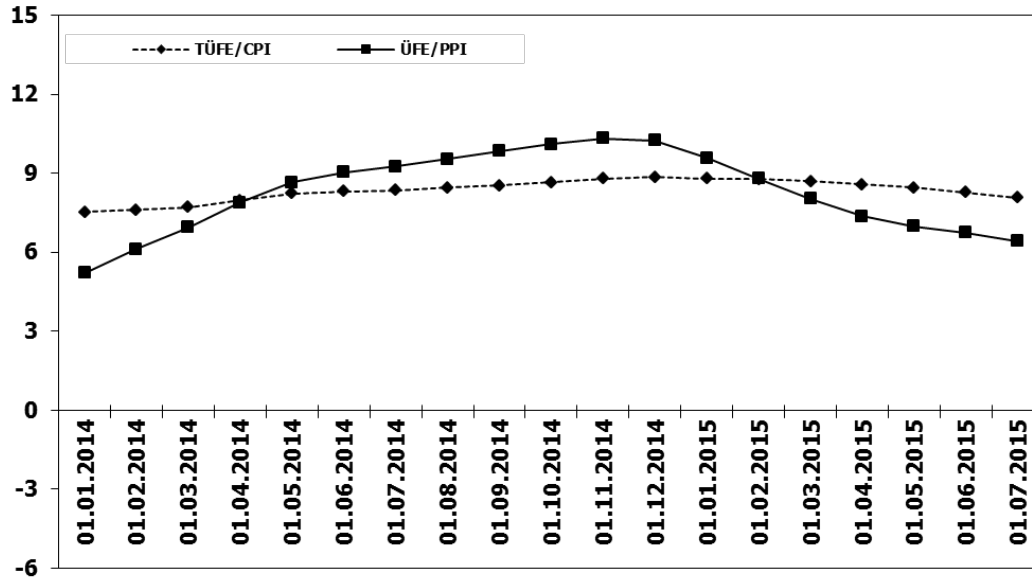
	2005	2006	2007	2008	2009	2010	2011	2012	2013	2014	2015
Yerli/Local	2.225	2.175	1.870	2.922	1.190	1.045	1.692	1.654	1.915	1.796	1.954
İthal/Imports	0	0	0	11	0	0	0	0	0	0	0
Toplam/Total	2.225	2.175	1.870	2.933	1.190	1.045	1.692	1.654	1.915	1.796	1.954
İthalat/Imports (%)	0	0	0	0	0	0	0	0	0	0	0

## Kamyon Pazarı (2005-2015 Ocak-Temmuz) Truck Market (2005-2015 January-July)

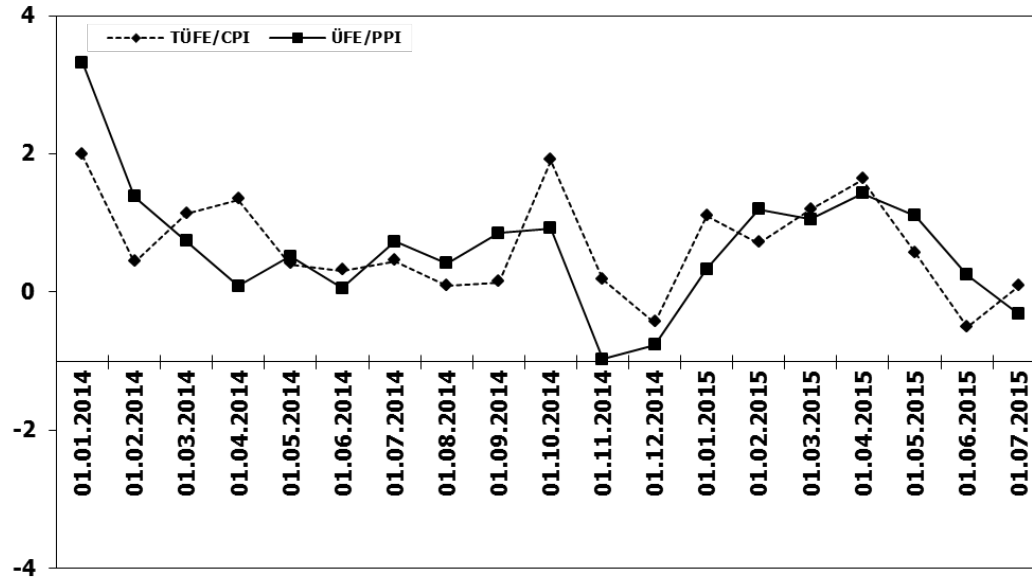


	2005	2006	2007	2008	2009	2010	2011	2012	2013	2014	2015
Yerli/Local	15.535	17.918	12.031	11.381	5.851	7.591	15.639	12.900	12.198	12.675	15.851
İthal/Imports	4.180	6.125	5.433	4.976	2.217	3.997	7.925	5.947	5.164	5.227	6.647
Toplam/Total	19.715	24.043	17.464	16.357	8.068	11.588	23.564	18.847	17.362	17.902	22.498
İthalat/Imports (%)	21	25	31	30	27	34	34	32	30	29	30

## TÜFE ve ÜFE'nin Yıllık Değişimi (%) CPI and PPI Yearly Changes (%)



## TÜFE ve ÜFE'nin Aylık Değişimi (%) CPI and PPI Monthly Changes (%)





## 2015 Yılı İthal Hafif Araç Satışları 2015 Light Vehicles Import Sales

2015 YILI İTHAL OTOMOBİL SATIŞLARI / P.Cars Import 2015

	2014 TOPLAMI 2014 Total	1	2	3	4	5	6	7	8	9	10	11	12	2015 TOPLAMI 2015 Total
VOLKSWAGEN	84.646	4.491	6.942	9.711	10.487	10.793	8.922	10.620						61.966
FORD	35.682	1.101	2.782	3.636	4.681	4.678	4.645	3.987						25.510
OPEL	39.255	952	2.239	3.964	4.753	3.943	4.460	3.378						23.689
DACIA	27.897	1.709	2.289	2.968	2.872	2.918	3.661	3.362						19.779
B.M.W	26.174	1.219	1.536	2.369	2.717	2.896	2.652	3.066						16.459
RENAULT	25.572	653	1.309	2.874	1.927	3.566	4.002	2.533						16.864
PEUGEOT	17.026	846	1.110	2.039	2.635	2.739	2.086	1.973						13.428
SKODA	14.537	515	1.568	2.120	2.355	2.162	2.086	1.803						12.609
NISSAN	19.422	949	1.372	1.859	2.304	2.402	2.305	2.307						13.498
MERCEDES	23.100	417	1.384	2.200	2.135	2.101	3.558	3.283						15.078
HYUNDAI	21.685	784	1.011	1.884	2.259	2.392	2.423	1.676						12.429
AUDI	17.809	610	1.103	1.685	2.006	1.738	1.604	1.609						10.355
CITROEN	14.389	683	941	1.522	2.077	1.406	1.810	1.388						9.827
SEAT	12.697	164	1.103	1.496	1.852	1.740	1.768	1.679						9.802
TOYOTA	10.146	327	535	1.070	1.547	1.006	757	916						6.158
KIA	11.017	330	676	1.183	1.245	1.120	1.185	958						6.697
VOLVO	6.060	295	290	657	751	856	701	453						4.003
FIAT	6.179	248	377	481	617	382	520	435						3.060
JEEP	1.960	239	281	308	383	268	325	264						2.068
HONDA	3.269	98	241	273	152	193	211	422						1.590
SUBARU	1.402	65	40	261	176	144	140	130						956
LAND ROVER	1.207	31	87	240	94	132	148	66						798
MITSUBISHI	1.159	64	64	92	149	105	119	131						724
MINI (İngiliz)	1.071	21	47	139	136	143	135	177						798
MAZDA	1.291	27	80	49	87	130	181	157						711
PROTON	707	55	40	67	70	84	70	50						436
ALFA ROMEO	967	34	59	56	76	134	79	46						484
PORSCHE	588	45	48	53	47	55	34	46						328
CHERY	325	26	38	46	39	35	32	29						245
SSANGYONG	531	44	21	31	29	49	163	94						431
SUZUKI	958	27	17	20	28	14	2	6						114
TATA	126	21	24	21	19	23	19	3						130
JAGUAR	52	0	25	50	7	6	8	31						127
SMART	76	4	3	10	11	5	7	4						44
GEELY	95	4	7	3	6	3	1	0						24
MASERATI	83	2	2	3	9	9	7	5						37
BENTLEY	21	0	4	1	0	3	1	1						10
LAMBORGHINI	2	1	1	2	1	0	1	0						6
FERRARI	11	0	0	1	2	2	0	0						5
INFINITI	6	1	1	1	0	10	7	8						28
LANCIA	210	0	2	0	0	0	0	0						2
CHEVROLET	572	0	0	0	0	0	0	0						0
<b>TOPLAM</b>	<b>429.982</b>	<b>17.102</b>	<b>29.699</b>	<b>45.445</b>	<b>50.741</b>	<b>50.385</b>	<b>50.835</b>	<b>47.096</b>	<b>0</b>	<b>0</b>	<b>0</b>	<b>0</b>	<b>0</b>	<b>291.303</b>

2015 YILI İTHAL HAFİF TİCARİ ARAÇ SATIŞLARI / Light Commercial Vehicles Import 2015

	2014 TOPLAMI 2014 Total	1	2	3	4	5	6	7	8	9	10	11	12	2015 TOPLAMI 2015 Total
VOLKSWAGEN	24.001	1.336	2.575	3.182	2.680	2.054	2.049	3.606						17.482
RENAULT	8.716	501	673	1.104	1.030	923	1.459	1.182						6.872
MERCEDES	8.028	391	424	1.009	654	642	683	713						4.516
FIAT	7.664	347	491	782	815	786	685	531						4.437
PEUGEOT	5.832	303	403	704	824	738	708	655						4.335
CITROEN	6.048	269	392	730	684	301	432	777						3.585
DACIA	6.572	250	242	696	642	583	731	563						3.707
MITSUBISHI	4.188	390	324	518	246	205	191	321						2.195
KIA	2.057	147	221	136	444	373	373	367						2.061
IVECO	2.524	117	139	282	235	210	224	131						1.338
TOYOTA	1.670	73	45	255	207	299	177	55						1.111
HYUNDAI	1.565	89	104	164	208	142	113	181						1.001
SSANGYONG	626	31	34	69	71	8	13	17						243
ISUZU	1.728	27	19	32	59	25	15	13						190
TATA	290	22	21	23	21	19	21	19						146
FORD	333	22	22	5	22	36	46	221						374
NISSAN	275	1	0	0	2	0	0	4						7
MAZDA	9	0	0	0	0	0	0	0						0
<b>TOPLAM</b>	<b>82.126</b>	<b>4.316</b>	<b>6.129</b>	<b>9.691</b>	<b>8.844</b>	<b>7.344</b>	<b>7.920</b>	<b>9.356</b>	<b>0</b>	<b>0</b>	<b>0</b>	<b>0</b>	<b>0</b>	<b>53.600</b>