



OTOMOTİV SANAYİİ DERNEĞİ
AUTOMOTIVE MANUFACTURERS ASSOCIATION

AYLIK RAPOR

Automotive Industry Monthly Report

Kasım / November 2013

- **Üretim/Production**
- **Satış/Sales**
- **İthalat/Imports**
- **İhracat/Exports**

OSD "OICA" Üyesidir



OSD is a Member of "OICA"

2013 Kasım Ayı Özeti / 2013 November Summary

KONULAR/ MATTERS		KASIM / NOVEMBER			11 AY/ 11 MONTHS			SON 12 AYLIK / YoY		
		2012	2013	2013/2012 (%)	2012	2013	2013/2012 (%)	2012	2013	2013/2012 (%)
Üretim/ Production	Toplam/ Total	101.385	113.678	12	986.034	1.042.400	6	1.090.487	1.129.344	4
	Otomobil/ P.Cars	53.168	66.155	24	532.588	582.669	9	583.654	627.377	7
Pazar/ Market	Toplam/ Total	75.045	83.019	11	696.507	757.530	9	830.788	878.643	6
	Otomobil/ P.Cars	52.297	64.117	23	475.354	563.456	19	564.311	644.382	14
İthalat/ Import	Toplam/ Total	48.400	57.407	19	435.652	523.179	20	514.417	599.221	16
	Otomobil/ P.Cars	40.684	49.474	22	347.819	438.550	26	411.948	500.407	21
İhracat/ Export	Toplam/ Total	68.723	79.793	16	664.995	763.472	15	732.190	828.400	13
	Otomobil/ P.Cars	39.447	47.271	20	377.066	441.670	17	412.843	477.595	16
İhracat / Export (\$)	Toplam/ Total **	1.780.907.519	2.117.981.243	19	17.673.304.464	19.763.766.989	12	19.257.901.793	21.409.568.808	11
	Otomobil/ P.Cars	562.967.865	659.305.662	17	5.508.346.928	6.332.387.811	15	6.052.558.996	6.891.980.022	14
PARAMETRELER / PARAMETERS		KASIM / NOVEMBER			11 AY/ 11 MONTHS			SON 12 AYLIK / YoY		
		2012	2013	2013/2012 (%)	2012	2013	2013/2012 (%)	2012	2013	2013/2012 (%)
ÜFE/ PPI		1,66	0,62	**	2,58	5,80	**	3,60	5,67	**
TÜFE/ CPI		0,38	0,01	**	5,76	6,91	**	6,37	7,32	**
Sanayi Endeksi/ Industry Index		-0,55	0,57	**	1,26	5,97	**	1,64	5,89	**
\$ (*)		1,7860	2,0160	13	1,7909	1,9145	7	1,7958	1,9038	6
EURO (*)		2,3225	2,7435	18	2,3098	2,5323	10	2,3226	2,5177	8
Japon Yeni (*)		2,1610	1,9600	-9	2,2538	1,9576	-13	2,2637	1,9673	-13

(*) Ortalama Değerler / Average Values

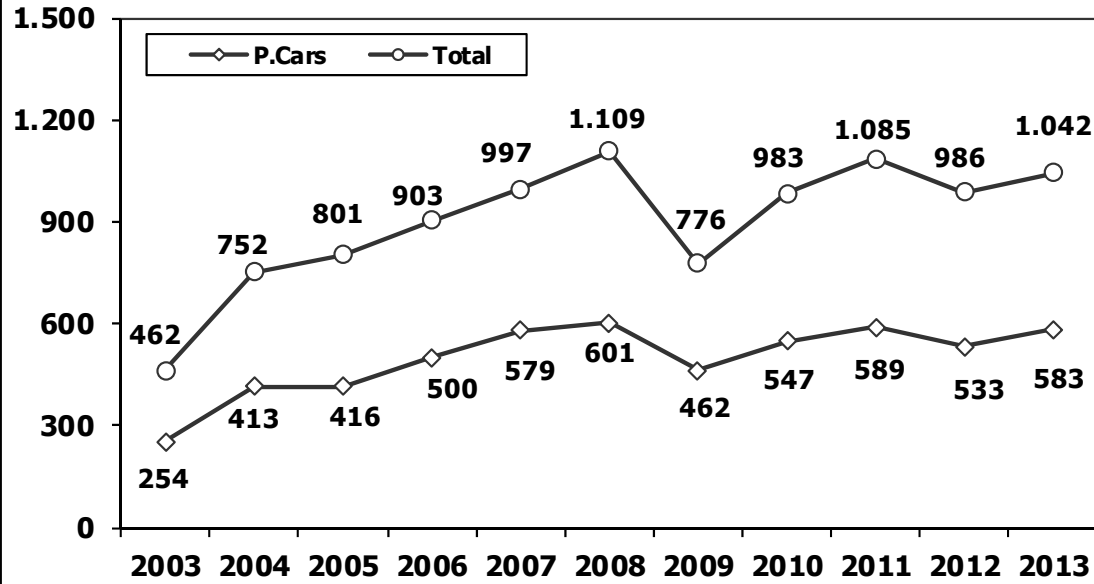
(**) Toplam Sanayi / Total Industry Including Components

2012/2013 Yılları Üretim 2012/2013 Production

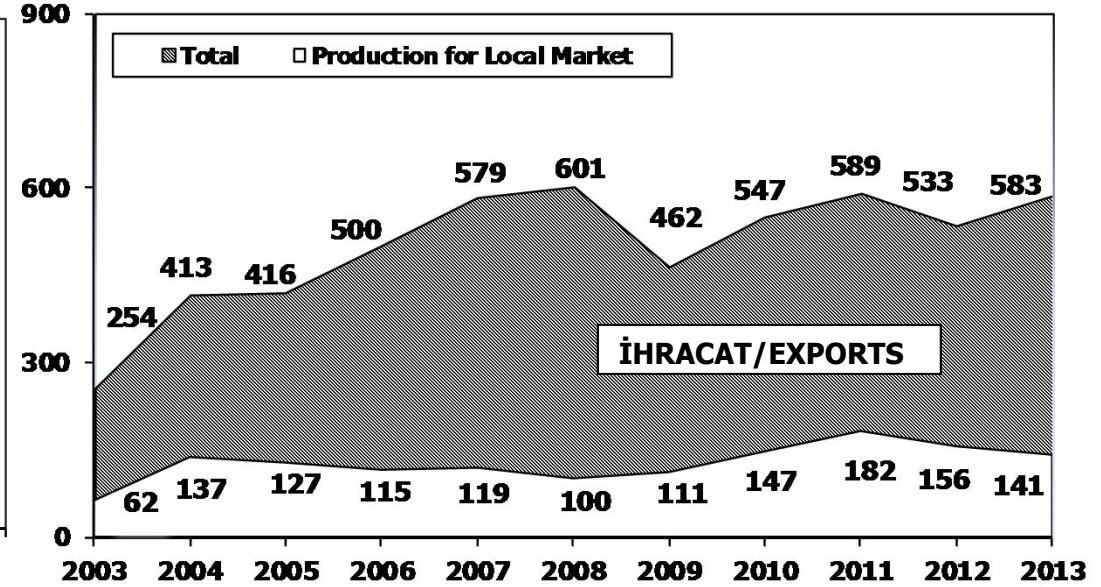
K.KAMYON : AYA 3.5-12 Ton (L.Truck:GVW 3.5-12 Ton)
B.KAMYON : AYA 12 Ton'dan Büyük (M.Truck:GVW 12 Ton And Up)

TİPLER	KASIM AYI ÜRETİMİ November Production		11 AYLIK ÜRETİM 11 Months Production		DEĞİŞİM % Percent Change %	
	2012	2013	2012	2013	KASIM November	11 AY 11 Months
OTOMOBİL - Pass.Car	53.168	66.155	532.588	582.669	24	9
TİCARİ ARAÇLAR - Commercial Vehicles	48.217	47.523	453.446	459.731	-1	1
* B. KAMYON - M. Truck	1.750	2.025	25.115	23.228	16	-8
* K. KAMYON - L. Truck	326	484	2.700	4.047	48	50
* KAMYONET - Pick Up	41.472	39.486	389.525	383.876	-5	-1
* OTOBÜS - Bus	511	603	5.930	7.858	18	33
* MİNİBÜS - Minibus	3.665	4.346	26.275	35.888	19	37
* MİDİBÜS - Midibus	493	579	3.901	4.834	17	24
TAŞIT ARAÇLARI TOPLAM - MV Total	101.385	113.678	986.034	1.042.400	12	6
TRAKTÖR - F.Tractor	3.265	4.187	40.651	37.638	28	-7
GENEL TOPLAM - Grand Total	104.650	117.865	1.026.685	1.080.038	13	5

Toplam Üretim ve Otomobil Üretimi (x1000) (Ocak-Kasım)
Total & P.Cars Production (x1000) (January- November)



Otomobil Üretimi ve İhracat (x1000) (Ocak-Kasım)
P.Cars Production & Exports (x1000) (January- November)



11 Aylık Üretim (11 Months Production)

FİRMALAR Companies	OTOMOBİL Pass.Car	%	K.KAMYON L.Truck	%	B.KAMYON Mid.Truck	%	KAMYONET Pick Up	%	OTOBÜS Bus	%	MINİBÜS Mini-Bus	%	MİDİBÜS Midi-Bus	%	TRAKTÖR F.Tractor	%	TOPLAM Totals
A.I.O.S.	0	0	2.472	61	0	0	0	0	57	1	0	0	1.793	37	0	0	4.322
B.M.C.	0	0	0	0	0	0	0	0	0	0	0	0	0	0	0	0	0
FORD OTOSAN	0	0	0	0	5.378	23	225.640	59	0	0	35.017	98	0	0	0	0	266.035
HATTAT TARIM	0	0	0	0	0	0	0	0	0	0	0	0	0	0	1.977	5	1.977
HONDA TÜRKİYE	13.773	2	0	0	0	0	0	0	0	0	0	0	0	0	0	0	13.773
HYUNDAI ASSAN	88.945	15	0	0	0	0	0	0	0	0	0	0	0	0	0	0	88.945
KARSAN	0	0	90	2	900	4	9.857	3	563	7	836	2	0	0	0	0	12.246
M. BENZ TÜRK	0	0	0	0	16.950	73	0	0	3.691	47	0	0	0	0	0	0	20.641
MANTÜRKİYE	0	0	0	0	0	0	0	0	1.187	15	0	0	0	0	0	0	1.187
OTOKAR	0	0	310	8	0	0	371	0	1.175	15	35	0	2.493	52	0	0	4.384
OYAK RENAULT	311.664	53	0	0	0	0	0	0	0	0	0	0	0	0	0	0	311.664
TEMSA GLOBAL	0	0	1.175	29	0	0	0	0	1.185	15	0	0	548	11	0	0	2.908
TOFAŞ	77.282	13	0	0	0	0	148.008	39	0	0	0	0	0	0	0	0	225.290
TOYOTA	91.005	16	0	0	0	0	0	0	0	0	0	0	0	0	0	0	91.005
TÜRK TRAKTÖR	0	0	0	0	0	0	0	0	0	0	0	0	0	0	35.661	95	35.661
TOPLAM	582.669	100	4.047	100	23.228	100	383.876	100	7.858	100	35.888	100	4.834	100	37.638	100	1.080.038

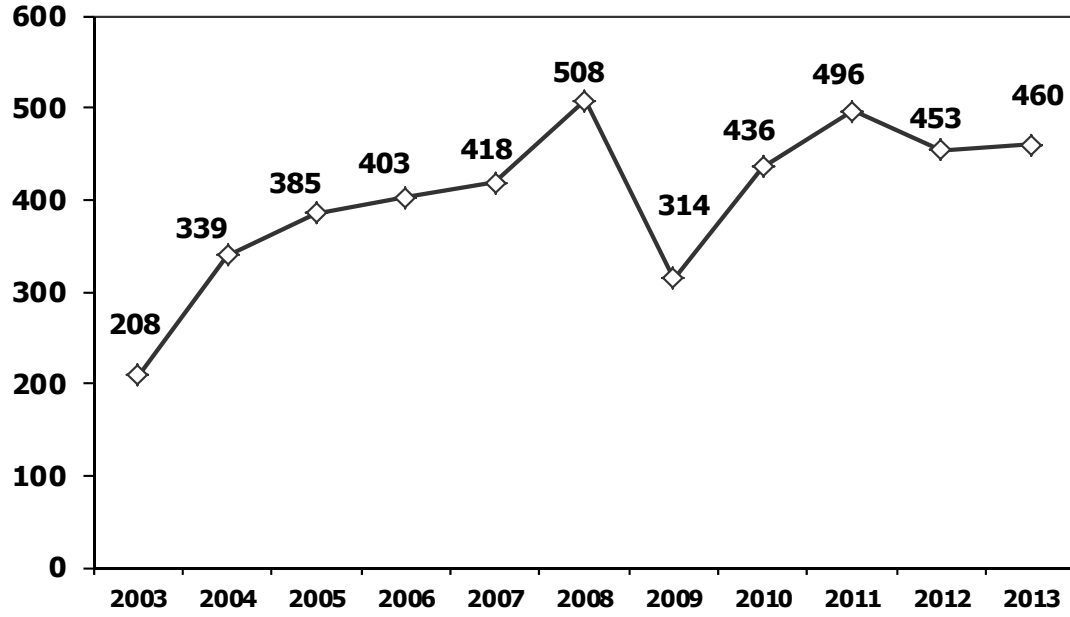
Kasım Ayı Üretimi (November Production)

FİRMALAR Companies	OTOMOBİL Pass.Car	%	K.KAMYON L.Truck	%	B.KAMYON Mid.Truck	%	KAMYONET Pick Up	%	OTOBÜS Bus	%	MINİBÜS Mini-Bus	%	MİDİBÜS Midi-Bus	%	TRAKTÖR F.Tractor	%	TOPLAM Totals
A.I.O.S.	0	0	342	71	0	0	0	0	0	0	0	0	189	33	0	0	531
B.M.C.	0	0	0	0	0	0	0	0	0	0	0	0	0	0	0	0	0
FORD OTOSAN	0	0	0	0	529	26	23.003	58	0	0	4.346	100	0	0	0	0	27.878
HATTAT TARIM	0	0	0	0	0	0	0	0	0	0	0	0	0	0	280	7	280
HONDA TÜRKİYE	1468	2	0	0	0	0	0	0	0	0	0	0	0	0	0	0	1.468
HYUNDAI ASSAN	11350	17	0	0	0	0	0	0	0	0	0	0	0	0	0	0	11.350
KARSAN	0	0	0	0	12	1	840	2	0	0	0	0	0	0	0	0	852
M. BENZ TÜRK	0	0	0	0	1.484	73	0	0	386	64	0	0	0	0	0	0	1.870
MANTÜRKİYE	0	0	0	0	0	0	0	0	123	20	0	0	0	0	0	0	123
OTOKAR	0	0	59	12	0	0	72	0	44	7	0	0	330	57	0	0	505
OYAK RENAULT	33206	50	0	0	0	0	0	0	0	0	0	0	0	0	0	0	33.206
TEMSA GLOBAL	0	0	83	17	0	0	0	0	50	8	0	0	60	10	0	0	193
TOFAŞ	7315	11	0	0	0	0	15.571	39	0	0	0	0	0	0	0	0	22.886
TOYOTA	12816	19	0	0	0	0	0	0	0	0	0	0	0	0	0	0	12.816
TÜRK TRAKTÖR	0	0	0	0	0	0	0	0	0	0	0	0	0	0	3.907	93	3.907
TOPLAM	66.155	100	484	100	2.025	100	39.486	100	603	100	4.346	100	579	100	4.187	100	117.865



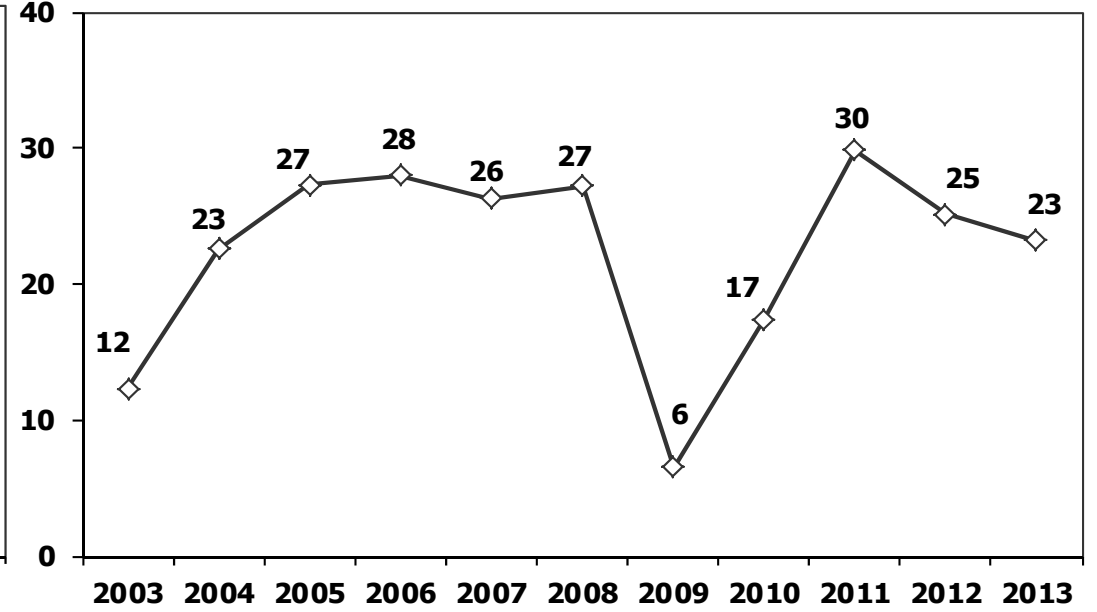
Ticari Araç Üretimi (x1000) (Ocak-Kasım)

Commercial Vehicle Production (x1000) (January- November)



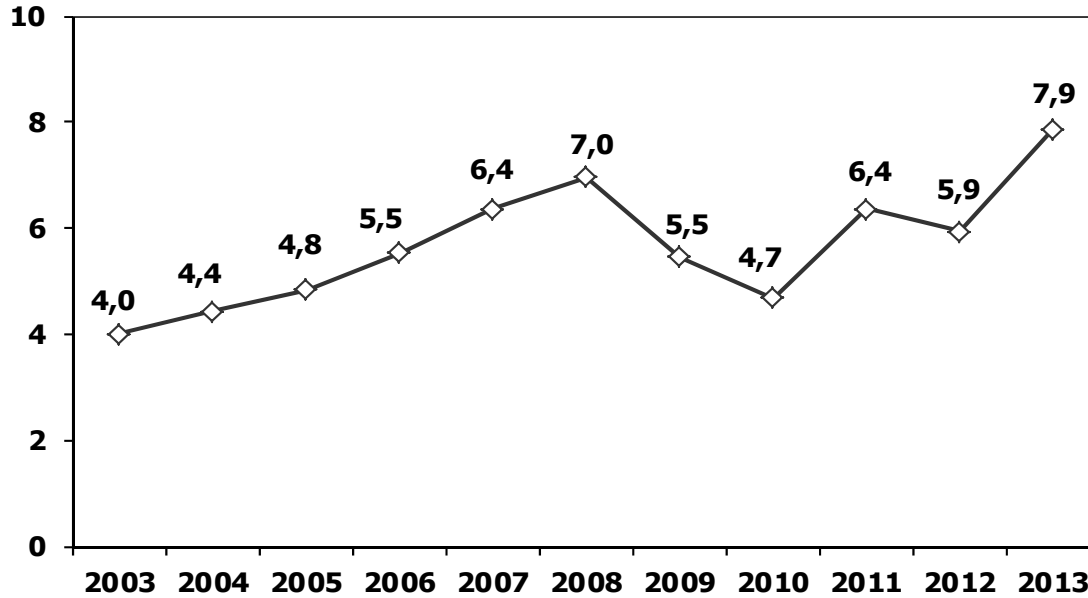
(AYA >12 Ton) Büyük Kamyon Üretimi (x1000) (Ocak-Kasım)

(GVW >12 Ton) Heavy Truck Production (x1000) (January- November)



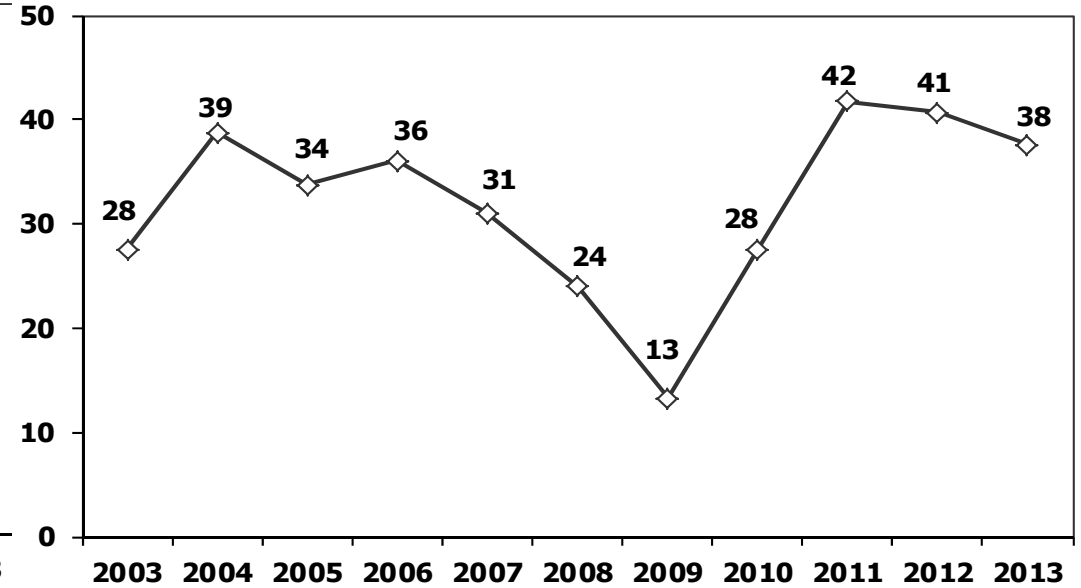
Otobüs Üretimi (x1000) (Ocak-Kasım)

Bus Production (x1000) (January- November)



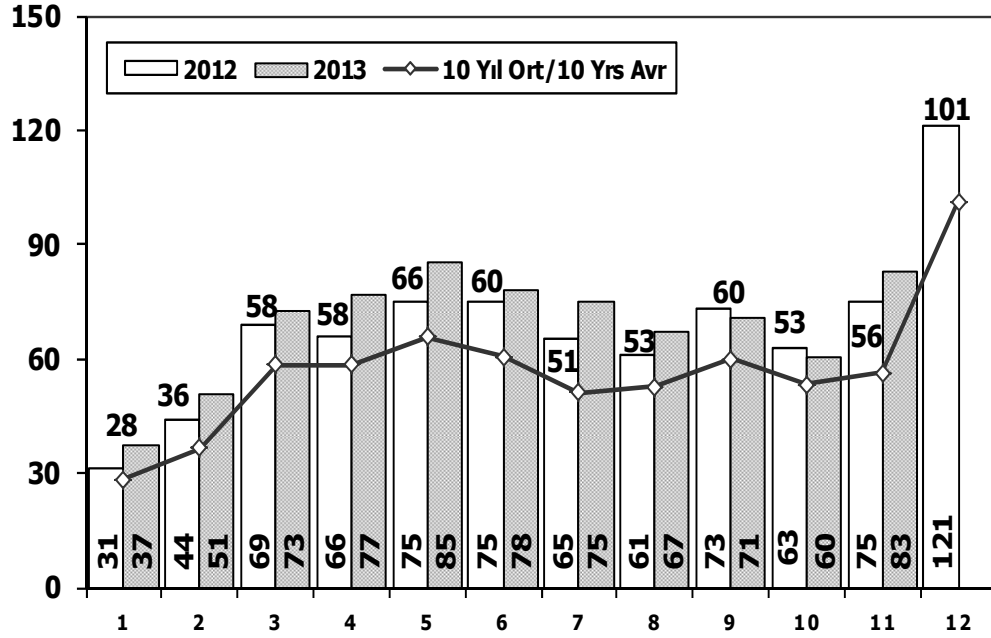
Traktör Üretimi (x1000) (Ocak-Kasım)

F. Tractor Production (x1000) (January- November)



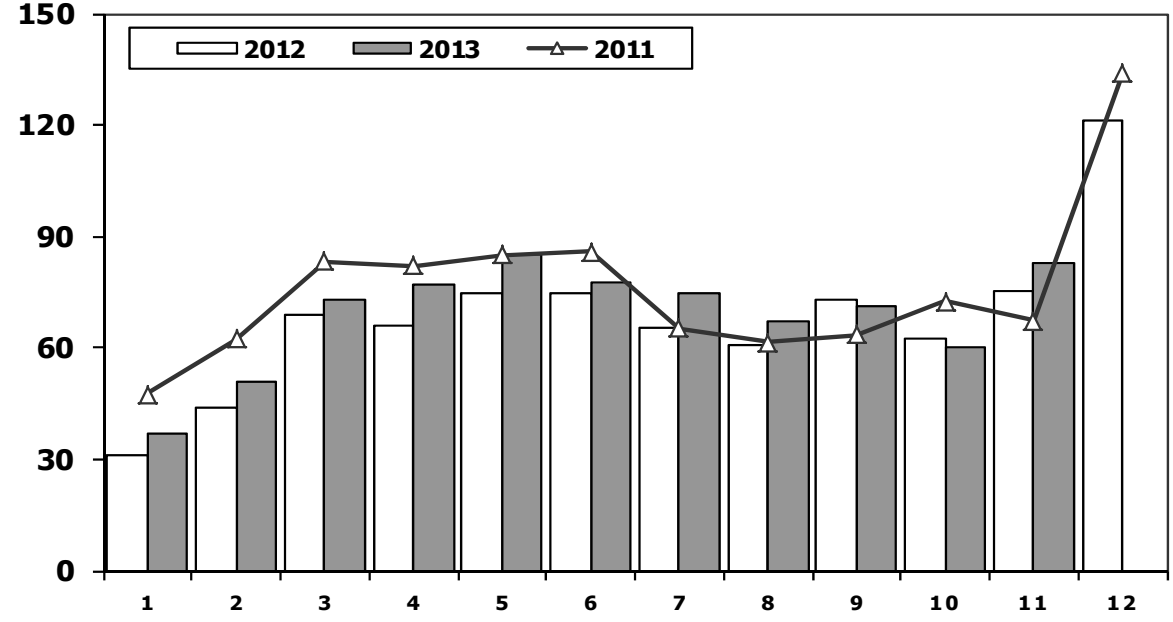
Toplam Pazarın Analizi (x1000)

Total Market Analysis (x1000)



Toplam Pazar (x1000)

Total Market (x1000)

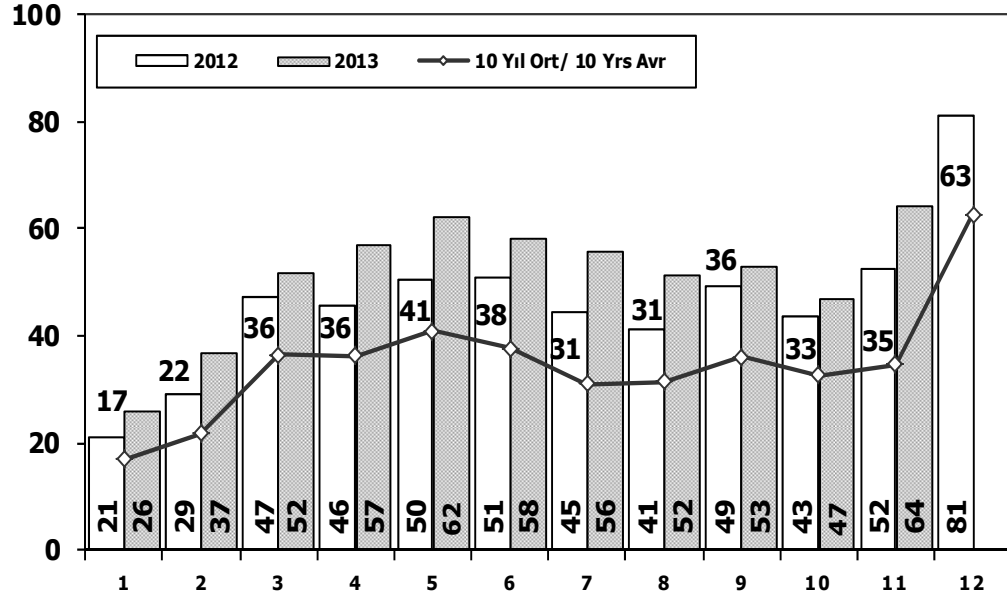


Aylar / Months	10 Yil Ort. 10 Yrs Avr. (x1000)	2013 (x1000)	%
1	28,3	37,1	31,2
2	36,5	50,9	39,6
3	58,3	72,7	24,6
4	58,3	77,0	32,0
5	65,6	85,4	30,1
6	60,5	77,8	28,6
7	51,3	74,7	45,7
8	52,6	67,4	28,1
9	60,0	71,0	18,5
10	53,2	60,4	13,5
11	56,2	83,0	47,7
Total	580,8	757,5	30,4

	1	2	3	4	5	6	7	8	9	10	11	12	11 Ay/Mo	Total
2003	12.576	11.317	17.095	20.380	27.803	30.517	32.268	28.839	40.315	50.051	44.081	82.721	315.242	397.963
2004	38.621	39.389	71.723	77.056	84.634	63.228	57.307	56.422	59.429	56.153	52.237	85.070	656.199	741.269
2005	22.687	38.291	64.502	60.873	71.383	64.379	63.847	68.647	66.580	60.791	65.719	110.838	647.699	758.537
2006	29.969	44.646	65.090	68.853	83.289	58.203	40.037	47.374	49.629	39.805	55.898	82.722	582.793	665.515
2007	24.950	31.702	45.488	45.633	51.255	51.661	50.117	54.171	50.078	56.058	67.017	106.076	528.130	634.206
2008	33.792	38.121	56.814	50.967	51.627	49.393	44.692	46.592	46.829	35.147	28.152	44.418	482.126	526.544
2009	20.631	22.846	56.531	54.426	64.887	63.102	30.246	37.092	83.403	22.117	29.202	91.386	484.483	575.869
2010	21.050	32.313	53.828	57.079	61.628	63.390	63.718	64.645	66.601	76.780	77.406	154.734	638.438	793.172
2011	47.658	62.348	83.333	82.071	85.093	85.863	65.364	61.378	63.643	72.640	67.195	134.281	776.586	910.867
2012	31.219	43.827	68.957	66.014	74.820	74.781	65.122	60.848	73.197	62.677	75.045	121.113	696.507	817.620
2013	37.140	50.931	72.688	77.015	85.421	77.771	74.726	67.383	71.037	60.399	83.019	0	757.530	757.530

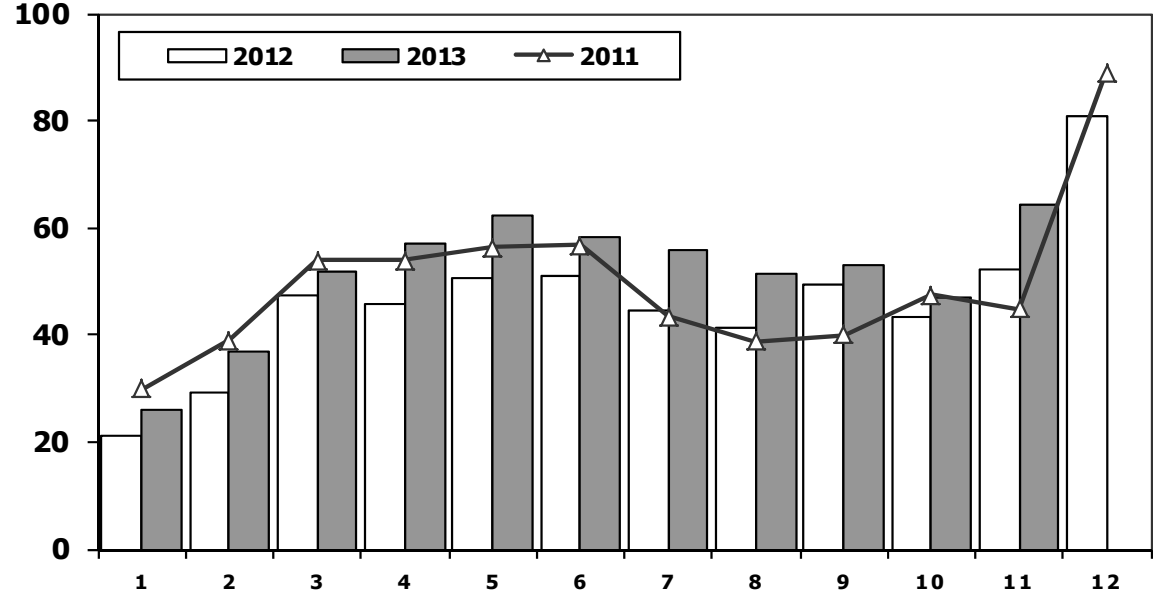
Otomobil Pazarının Analizi (x1000)

P.Cars Market Analysis (x1000)



Otomobil Pazarı (x1000)

P.Cars Market (x1000)

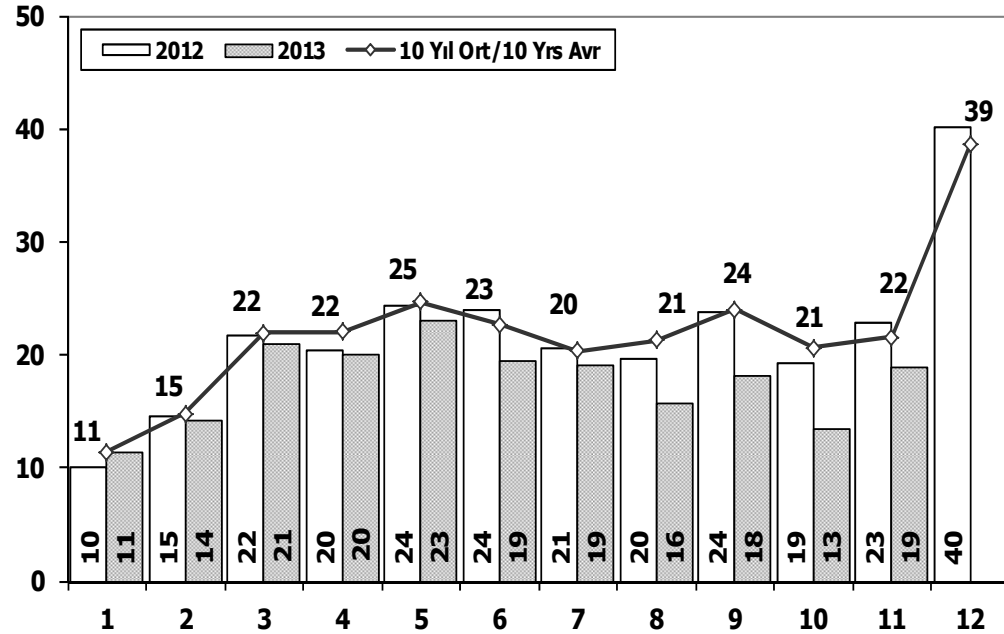


Aylar / Months	10 Yil Ort. 10 Yrs Avr. (x1000)	2013 (x1000)	%
1	16,9	25,8	53,3
2	21,7	36,8	69,8
3	36,4	51,8	42,2
4	36,3	57,0	56,9
5	41,0	62,4	52,3
6	37,7	58,3	54,5
7	31,0	55,7	79,9
8	31,4	51,6	64,6
9	36,0	52,9	47,1
10	32,6	47,0	44,1
11	34,7	64,1	85,0
Total	355,5	563,5	58,5

	1	2	3	4	5	6	7	8	9	10	11	12	11 Ay/Mo	Total
2003	6.309	5.486	8.555	11.107	15.965	16.329	14.764	16.896	23.772	30.615	25.777	51.461	175.575	227.036
2004	25.625	23.695	46.075	47.995	54.610	37.671	33.410	33.709	33.383	34.292	30.547	50.197	401.012	451.209
2005	11.595	21.012	38.129	36.206	38.480	40.900	38.969	38.648	36.410	34.960	37.841	65.447	373.150	438.597
2006	16.506	24.929	36.996	40.177	48.521	32.982	22.653	24.873	27.517	21.237	30.477	46.351	326.868	373.219
2007	13.186	17.212	24.336	25.204	29.067	30.126	28.246	28.469	27.662	32.569	39.643	61.745	295.720	357.465
2008	18.588	21.196	34.147	30.313	31.477	28.724	25.530	26.102	27.053	19.788	17.201	25.879	280.119	305.998
2009	13.173	14.492	40.622	36.202	44.188	41.019	16.637	22.537	52.162	13.828	17.781	57.178	312.641	369.819
2010	12.594	20.651	33.958	36.549	40.467	42.086	41.399	42.222	42.477	47.859	50.061	99.461	410.323	509.784
2011	29.868	39.004	54.023	53.835	56.302	56.714	43.518	38.875	39.964	47.508	44.951	88.957	504.562	593.519
2012	21.077	29.189	47.270	45.645	50.460	50.849	44.531	41.236	49.360	43.440	52.297	80.926	475.354	556.280
2013	25.835	36.814	51.785	56.999	62.383	58.290	55.712	51.611	52.925	46.985	64.117	0	563.456	563.456

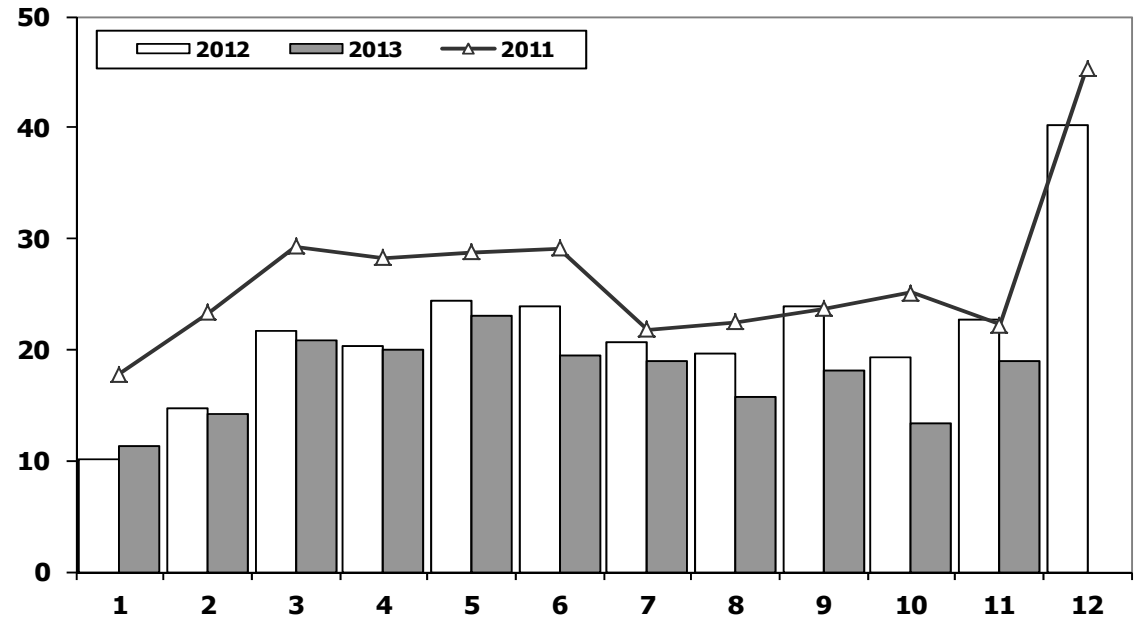
Ticari Araç Pazarının Analizi (x1000)

CV Market Analysis (x1000)



Ticari Araç Pazarı (x1000)

CV Total Market (Local + Imports) (x1000)

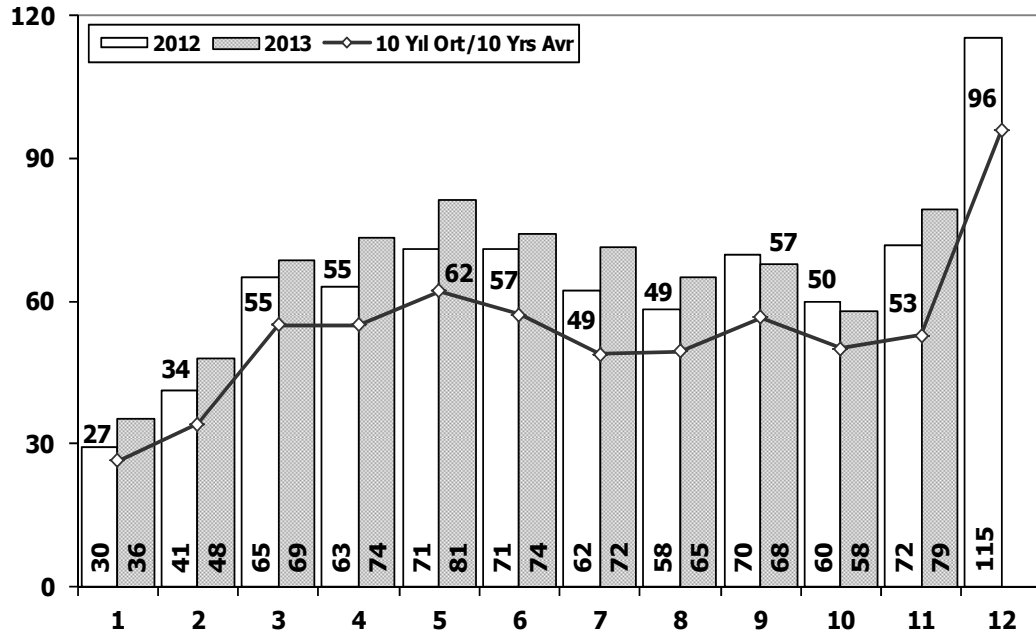


Aylar / Months	10 Yil Ort. 10 Yrs Avr. (x1000)	2013 (x1000)	%
1	11,5	11,3	-1,4
2	14,8	14,1	-4,6
3	21,9	20,9	-4,7
4	22,0	20,0	-9,1
5	24,7	23,0	-6,7
6	22,7	19,5	-14,2
7	20,3	19,0	-6,4
8	21,2	15,8	-25,8
9	24,0	18,1	-24,5
10	20,6	13,4	-34,9
11	21,5	18,9	-12,2
Total	225,3	194,1	-13,9

	1	2	3	4	5	6	7	8	9	10	11	12	11 Ay/Mo	Total
2003	6.267	5.831	8.540	9.273	11.838	14.188	17.504	11.943	16.543	19.436	18.304	31.260	139.667	170.927
2004	12.996	15.694	25.648	29.061	30.024	25.557	23.897	22.713	26.046	21.861	21.690	34.873	255.187	290.060
2005	11.092	17.279	26.373	24.667	32.903	23.479	24.878	29.999	30.170	25.831	27.878	45.391	274.549	319.940
2006	13.463	19.717	28.094	28.676	34.768	25.221	17.384	22.501	22.112	18.568	25.421	36.371	255.925	292.296
2007	11.764	14.490	21.152	20.429	22.188	21.535	21.871	25.702	22.416	23.489	27.374	44.331	232.410	276.741
2008	15.204	16.925	22.667	20.654	20.150	20.669	19.162	20.490	19.776	15.359	10.951	18.539	202.007	220.546
2009	7.458	8.354	15.909	18.224	20.699	22.083	13.609	14.555	31.241	8.289	11.421	34.208	171.842	206.050
2010	8.456	11.662	19.870	20.530	21.161	21.304	22.319	22.423	24.124	28.921	27.345	55.273	228.115	283.388
2011	17.790	23.344	29.310	28.236	28.791	29.149	21.846	22.503	23.679	25.132	22.244	45.324	272.024	317.348
2012	10.142	14.638	21.687	20.369	24.360	23.932	20.591	19.612	23.837	19.237	22.748	40.187	221.153	261.340
2013	11.305	14.117	20.903	20.016	23.038	19.481	19.014	15.772	18.112	13.414	18.902	0	194.074	194.074

Hafif Araç Pazarının Analizi (x1000)

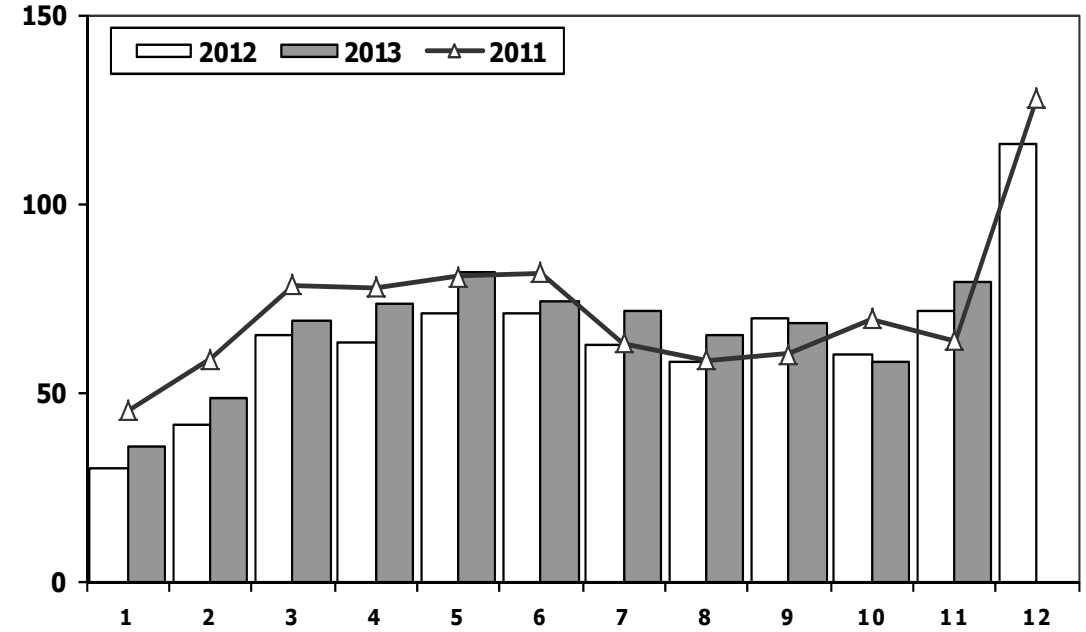
LV Market Analysis (x1000)



Aylar / Months	10 Yıl Ort. 10 Yrs Avr. (x1000)	2013 (x1000)	%
1	26,5	35,5	33,9
2	34,2	48,3	41,4
3	54,9	68,8	25,2
4	55,1	73,6	33,5
5	62,2	81,5	30,9
6	57,3	74,1	29,4
7	48,8	71,6	46,6
8	49,5	65,0	31,5
9	56,5	68,0	20,2
10	50,1	58,0	15,8
11	52,9	79,3	49,8
Total	548,1	723,7	32,0

Hafif Araç Pazarı (x1000)

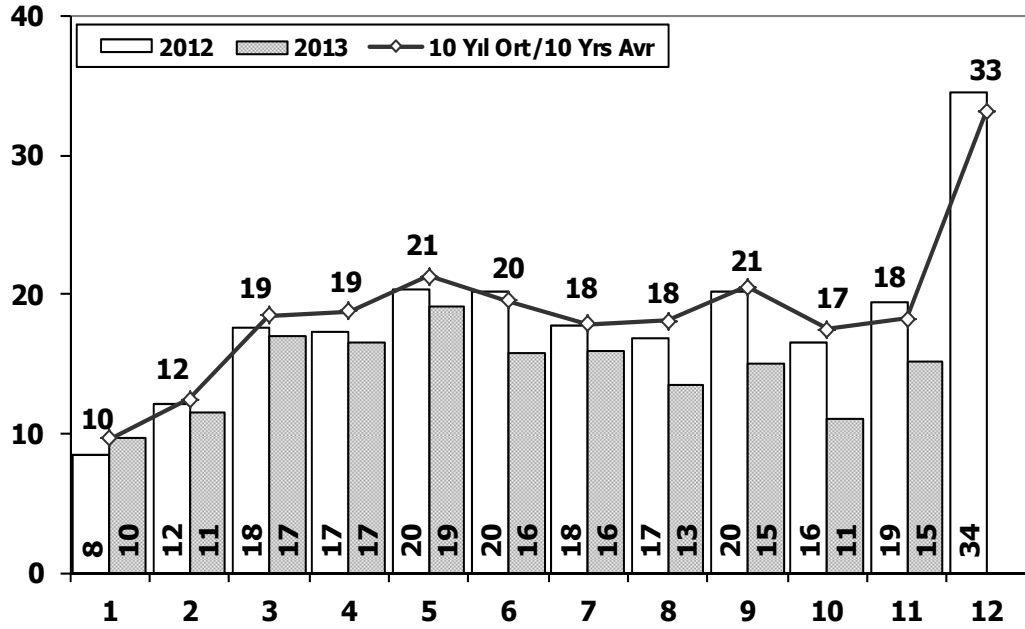
LV Total Market (Local + Imports) (x1000)



	1	2	3	4	5	6	7	8	9	10	11	12	11 Ay/Mo	Total
2003	11.531	10.402	15.743	18.693	25.853	28.266	30.172	25.903	36.234	45.446	40.048	75.778	288.291	364.069
2004	36.352	37.079	67.144	73.075	80.290	59.730	54.816	52.876	55.609	53.000	49.200	78.924	619.171	698.095
2005	20.747	35.766	60.707	56.844	67.357	60.796	61.015	64.011	61.954	56.638	61.364	103.209	607.199	710.408
2006	27.917	40.938	60.052	64.038	78.229	54.355	37.251	43.767	46.109	36.542	51.867	76.787	541.065	617.852
2007	23.117	29.184	41.890	42.366	47.938	48.674	47.490	50.558	46.581	52.725	63.313	100.926	493.836	594.762
2008	31.527	35.251	53.649	47.701	48.598	46.324	42.156	43.670	43.932	32.884	26.253	42.078	451.945	494.023
2009	19.606	21.742	55.111	52.640	63.191	61.067	28.845	35.609	81.397	21.033	27.962	88.923	468.203	557.126
2010	20.095	31.172	51.769	54.946	59.377	60.896	61.345	61.764	63.814	73.404	73.962	148.369	612.544	760.913
2011	44.892	58.663	78.403	77.695	80.646	81.573	63.044	58.406	60.129	69.421	63.657	127.910	736.529	864.439
2012	29.545	41.324	64.884	62.949	70.863	71.067	62.304	58.148	69.629	59.938	71.710	115.400	662.361	777.761
2013	35.523	48.307	68.774	73.575	81.468	74.096	71.596	65.043	67.963	58.014	79.301	0	723.660	723.660

Hafif Ticari Araç Pazarının Analizi (x1000)

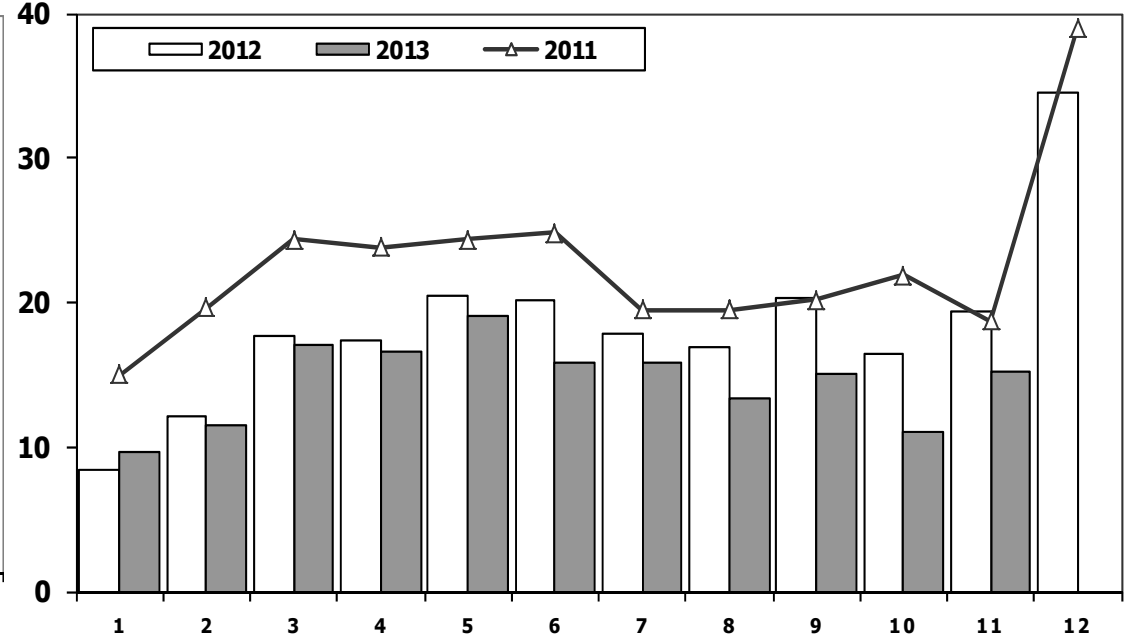
LCV Market Analysis (x1000)



Aylar / Months	10 Yil Ort. 10 Yrs Avr. (x1000)	2013 (x1000)	%
1	9,7	9,7	0,1
2	12,5	11,5	-7,8
3	18,5	17,0	-8,3
4	18,8	16,6	-11,7
5	21,3	19,1	-10,3
6	19,5	15,8	-19,1
7	17,9	15,9	-11,2
8	18,1	13,4	-25,8
9	20,6	15,0	-26,9
10	17,5	11,0	-37,0
11	18,3	15,2	-16,9
Total	192,6	160,2	-16,8

Hafif Ticari Araç Pazarı (x1000)

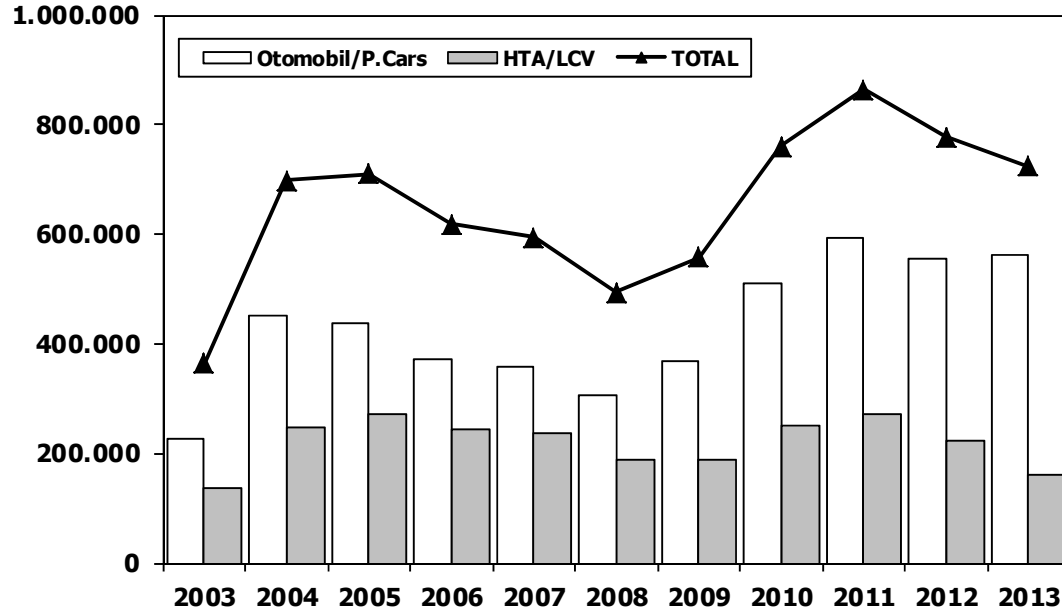
LCV Total Market (Local + Imports) (x1000)



	1	2	3	4	5	6	7	8	9	10	11	12	11 Ay/Mo	Total
2003	5.222	4.916	7.188	7.586	9.888	11.937	15.408	9.007	12.462	14.831	14.271	24.317	112.716	137.033
2004	10.727	13.384	21.069	25.080	25.680	22.059	21.406	19.167	22.226	18.708	18.653	28.727	218.159	246.886
2005	9.152	14.754	22.578	20.638	28.877	19.896	22.046	25.363	25.544	21.678	23.523	37.762	234.049	271.811
2006	11.411	16.009	23.056	23.861	29.708	21.373	14.598	18.894	18.592	15.305	21.390	30.436	214.197	244.633
2007	9.931	11.972	17.554	17.162	18.871	18.548	19.244	22.089	18.919	20.156	23.670	39.181	198.116	237.297
2008	12.939	14.055	19.502	17.388	17.121	17.600	16.626	17.568	16.879	13.096	9.052	16.199	171.826	188.025
2009	6.433	7.250	14.489	16.438	19.003	20.048	12.208	13.072	29.235	7.205	10.181	31.745	155.562	187.307
2010	7.501	10.521	17.811	18.397	18.910	18.810	19.946	19.542	21.337	25.545	23.901	48.908	202.221	251.129
2011	15.024	19.659	24.380	23.860	24.344	24.859	19.526	19.531	20.165	21.913	18.706	38.953	231.967	270.920
2012	8.468	12.135	17.614	17.304	20.403	20.218	17.773	16.912	20.269	16.498	19.413	34.474	187.007	221.481
2013	9.688	11.493	16.989	16.576	19.085	15.806	15.884	13.432	15.038	11.029	15.184	0	160.204	160.204

Hafif Arac Pazarı (AYA < 3.5 Ton)

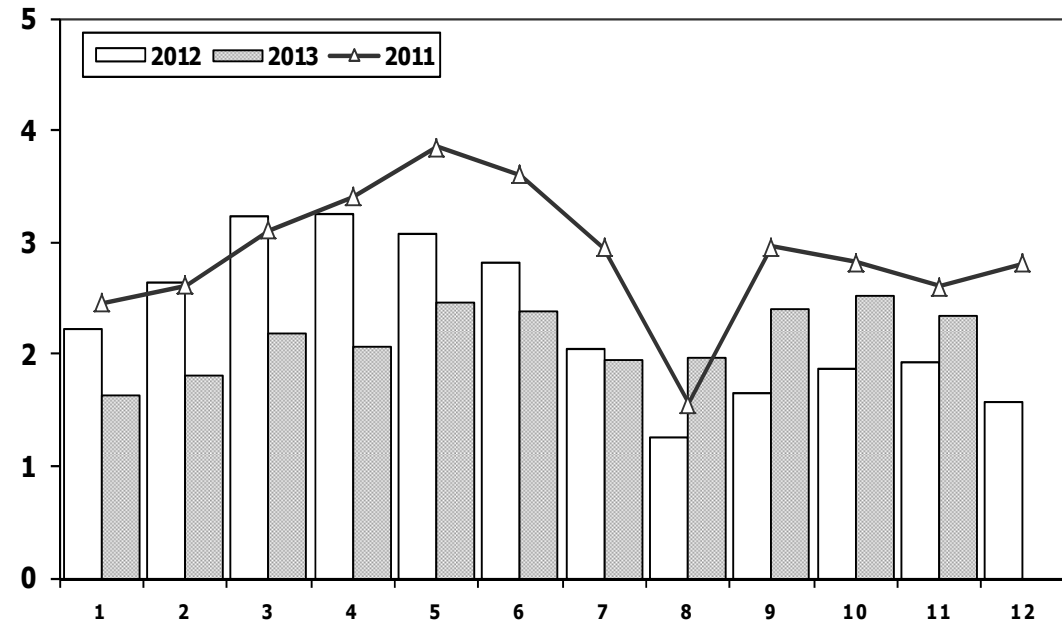
Light Vehicle Market (GVW < 3.5 Ton)



	2003	2004	2005	2006	2007	2008	2009	2010	2011	2012	2013
Otomobil/P.Cars	227.036	451.209	438.597	373.219	357.465	305.998	369.819	509.784	593.519	556.280	563.456
HTA/LCV	137.033	246.886	271.811	244.633	237.297	188.025	187.307	251.129	270.920	221.481	160.204
TOTAL	364.069	698.095	710.408	617.852	594.762	494.023	557.126	760.913	864.439	777.761	723.660
HTA/LCV (%)	38	35	38	40	40	38	34	33	31	28	22

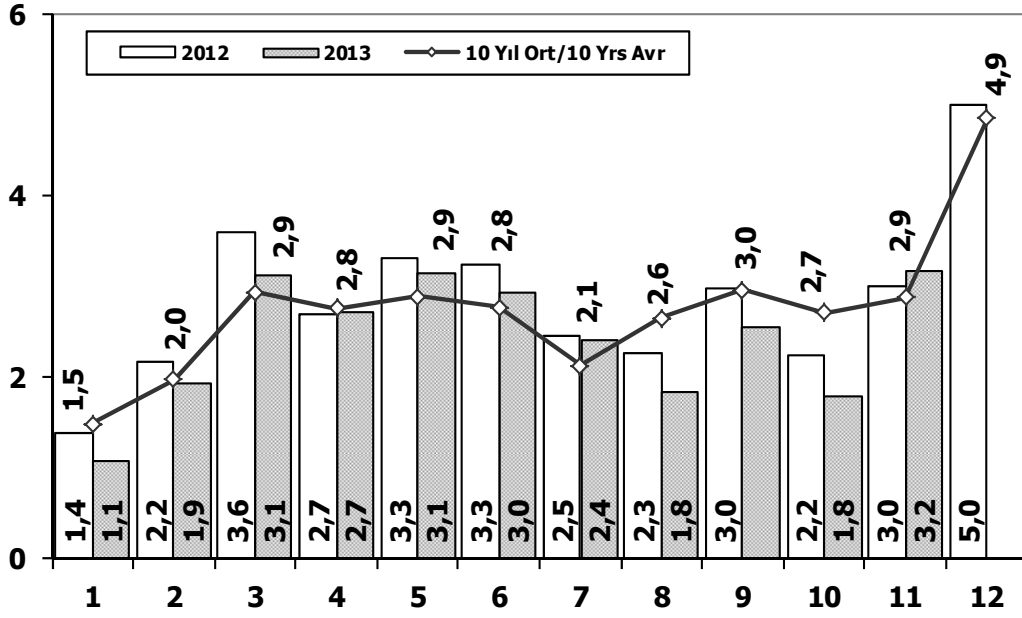
Traktör Pazarı (x1000)

F.Tractor Market (x1000)

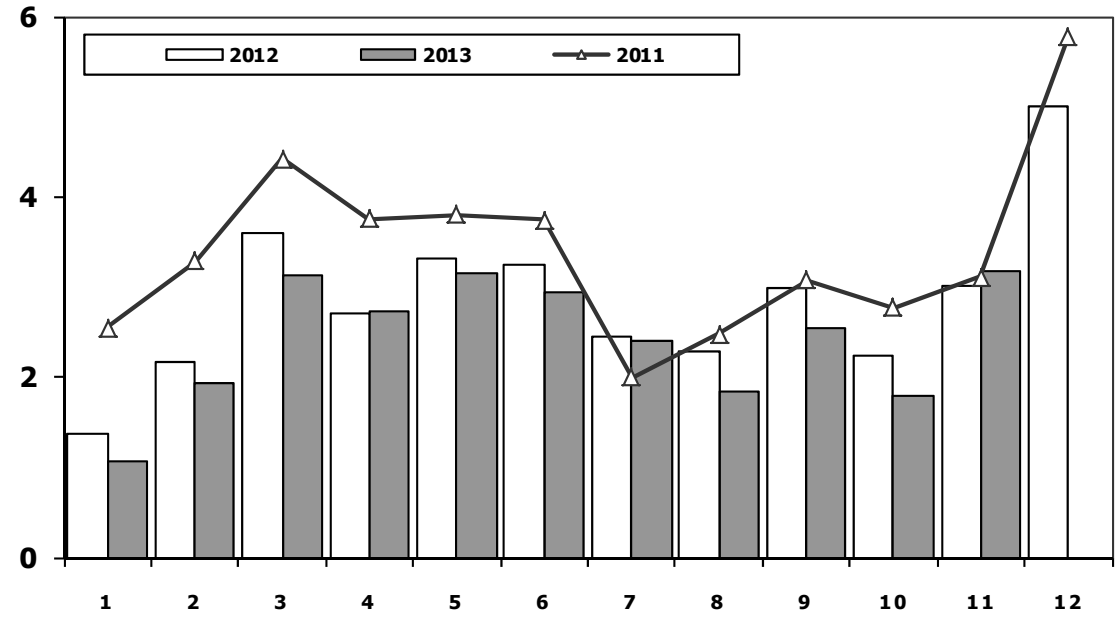


	1	2	3	4	5	6	7	8	9	10	11	12	11 Ay/Mo	Total
2003	712	830	1.313	1.460	1.527	1.123	1.311	1.404	1.706	1.893	1.541	1.468	14.820	16.288
2004	1.946	1.874	2.909	3.260	2.863	2.816	1.988	2.209	2.509	1.989	2.198	1.364	26.561	27.925
2005	1.026	1.636	2.001	2.599	2.569	2.780	2.148	2.819	2.567	2.477	2.297	2.089	24.919	27.008
2006	1.578	2.493	2.746	2.841	3.561	2.356	1.685	2.177	2.756	1.915	2.353	1.925	26.461	28.386
2007	1.812	1.778	2.063	2.107	2.266	1.853	1.653	2.065	2.372	2.239	2.231	1.602	22.439	24.041
2008	1.510	1.427	1.933	1.692	1.689	1.592	1.275	924	904	609	707	359	14.262	14.621
2009	267	344	388	638	759	828	741	534	586	765	725	715	6.575	7.290
2010	714	903	1.432	1.653	1.736	1.673	1.613	1.527	2.351	2.787	2.656	2.345	19.045	21.390
2011	2.458	2.610	3.105	3.403	3.847	3.599	2.952	1.559	2.957	2.823	2.603	2.807	31.916	34.723
2012	2.216	2.632	3.223	3.259	3.067	2.821	2.037	1.262	1.648	1.858	1.921	1.579	25.944	27.523
2013	1.633	1.812	2.193	2.070	2.455	2.372	1.955	1.969	2.396	2.510	2.343	0	23.708	23.708

Kamyon Pazarının Analizi (x1000) AYA > 5 Ton Truck Market Analysis (x1000) GVW > 5 Ton



Kamyon Pazarı (x1000) AYA > 5 Ton Truck Market (x1000) GVW > 5 Ton

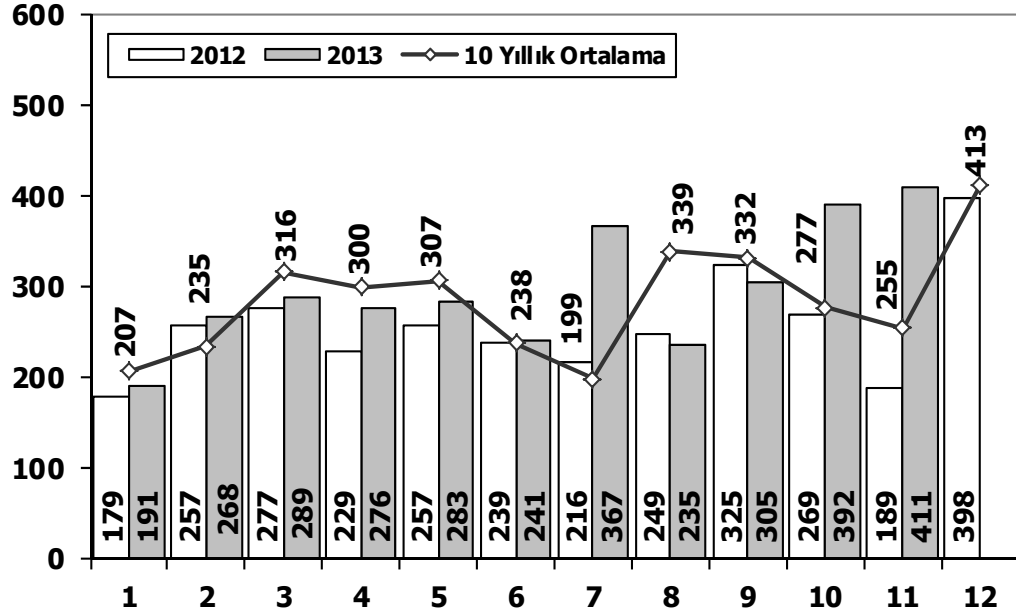


Aylar / Months	10 Yil Ort. 10 Yrs Avr. (x1000)	2013 (x100)	%
1	1,5	1,1	-27,8
2	2,0	1,9	-2,3
3	2,9	3,1	6,5
4	2,8	2,7	-1,5
5	2,9	3,1	8,6
6	2,8	3,0	6,7
7	2,1	2,4	13,3
8	2,6	1,8	-30,3
9	3,0	2,6	-13,8
10	2,7	1,8	-33,6
11	2,9	3,2	10,1
Total	28,2	26,7	-5,1

	1	2	3	4	5	6	7	8	9	10	11	12	11 Ay/Mo	Total
2003	771	773	1.123	1.494	1.668	2.008	1.933	2.490	3.563	4.147	3.720	6.406	23.690	30.096
2004	1.863	1.949	3.983	3.352	3.651	3.118	2.234	2.897	3.285	2.727	2.629	5.517	31.688	37.205
2005	1.693	2.186	3.288	3.484	3.413	3.147	2.504	4.028	4.043	3.708	3.918	6.570	35.412	41.982
2006	1.767	3.310	4.467	4.180	4.449	3.398	2.472	3.142	3.052	2.926	3.550	5.358	36.713	42.071
2007	1.554	2.055	3.065	2.940	2.865	2.613	2.372	3.145	2.988	2.886	3.258	4.444	29.741	34.185
2008	1.797	2.309	2.621	2.578	2.459	2.526	2.067	2.377	2.390	1.790	1.512	1.834	24.426	26.260
2009	771	759	1.034	1.342	1.355	1.651	1.156	1.205	1.780	866	981	2.015	12.900	14.915
2010	777	968	1.772	1.807	1.966	2.205	2.093	2.446	2.444	3.071	3.136	5.677	22.685	28.362
2011	2.552	3.292	4.418	3.754	3.803	3.749	1.996	2.478	3.081	2.774	3.108	5.787	35.005	40.792
2012	1.375	2.159	3.595	2.697	3.321	3.250	2.450	2.277	2.991	2.244	3.006	5.000	29.365	34.365
2013	1.077	1.931	3.127	2.720	3.145	2.951	2.411	1.845	2.554	1.801	3.173	0	26.735	26.735

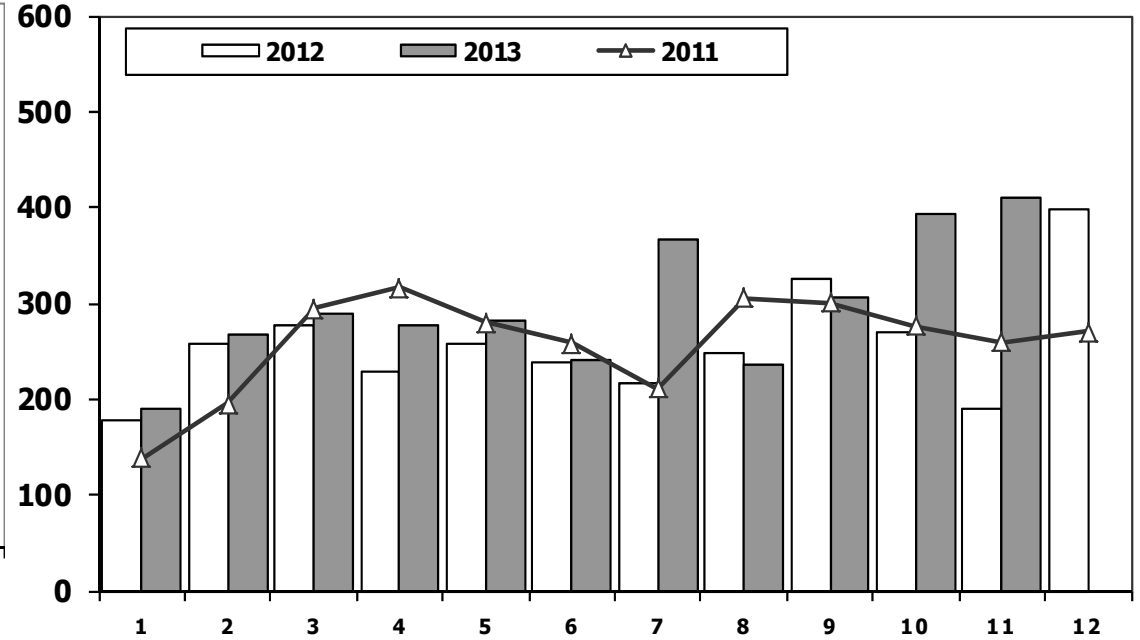
Midibüs Pazarının Analizi (7-9 mt / 25-35 Kişilik)

Midibus Market Analysis (7-9 mt / 25-35 Passengers)



Midibüs Pazarı (7-9 mt / 25-35 Kişilik Midibüs)

Midibus Market (7-9 mt / 25-35 Passengers)

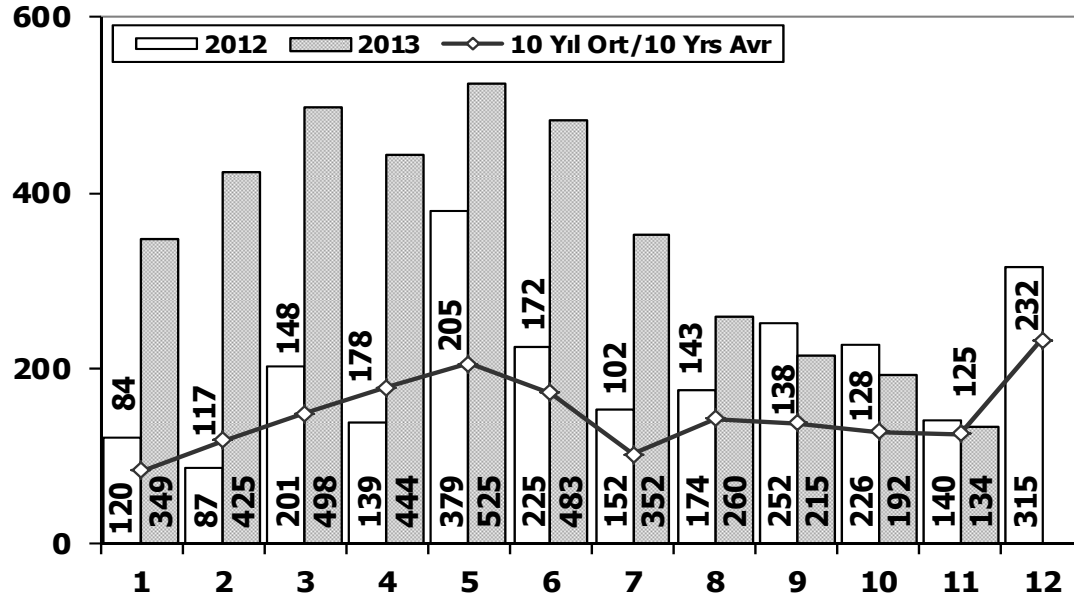


Aylar / Months	10 Yıl Ort. 10 Yrs Avr.	2013	%
1	207	191	-8
2	235	268	14
3	316	289	-9
4	300	276	-8
5	307	283	-8
6	238	241	1
7	199	367	85
8	339	235	-31
9	332	305	-8
10	277	392	42
11	255	411	61
Total	3.004	3.258	8

	1	2	3	4	5	6	7	8	9	10	11	12	11 Ay/Mo	Total
2003	220	109	188	106	158	161	103	322	349	330	212	436	2.258	2.694
2004	233	226	381	431	524	237	154	531	445	331	319	551	3.812	4.363
2005	182	258	432	393	439	269	252	459	436	329	328	574	3.777	4.351
2006	207	297	406	388	381	266	230	353	322	253	305	401	3.408	3.809
2007	207	272	404	238	302	283	164	365	399	279	283	465	3.196	3.661
2008	391	476	436	512	419	331	368	380	341	352	246	270	4.252	4.522
2009	154	124	160	220	174	198	160	175	168	143	206	323	1.882	2.205
2010	155	131	185	167	140	138	129	246	236	206	202	437	1.935	2.372
2011	138	195	294	316	280	258	211	305	301	276	260	270	2.834	3.104
2012	179	257	277	229	257	239	216	249	325	269	189	398	2.686	3.084
2013	191	268	289	276	283	241	367	235	305	392	411	0	3.258	3.258

Otobüs Pazarının Analizi

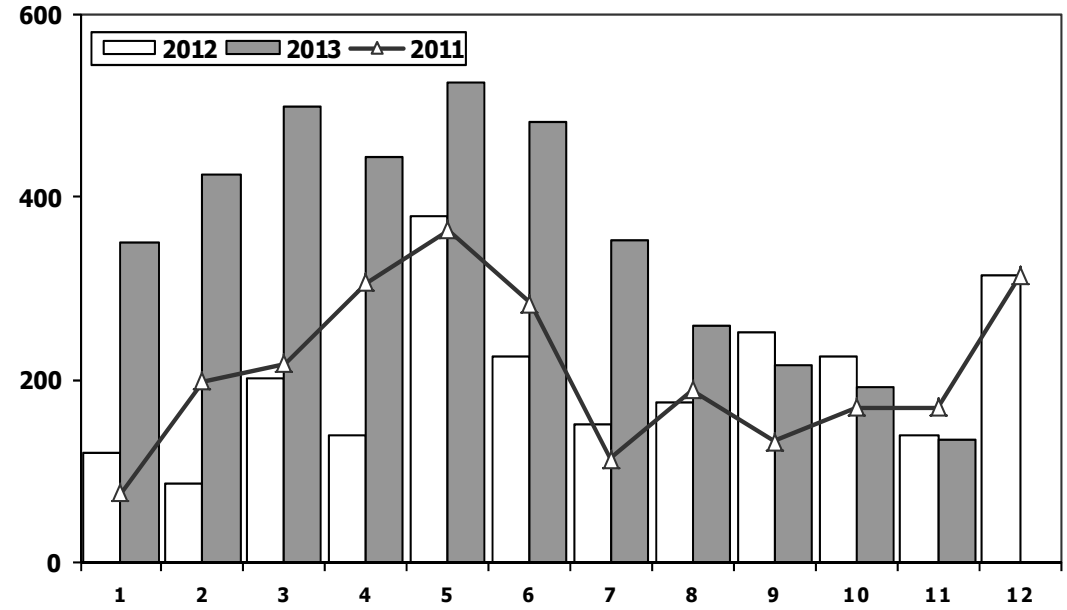
Bus Market Analysis



Aylar / Months	10 Yıl Ort. / 10 Yrs Avr.	2013	%
1	84	349	316
2	117	425	262
3	148	498	236
4	178	444	150
5	205	525	156
6	172	483	180
7	102	352	246
8	143	260	82
9	138	215	56
10	128	192	50
11	125	134	7
Total	1.539	3.877	152

Otobüs Pazarı

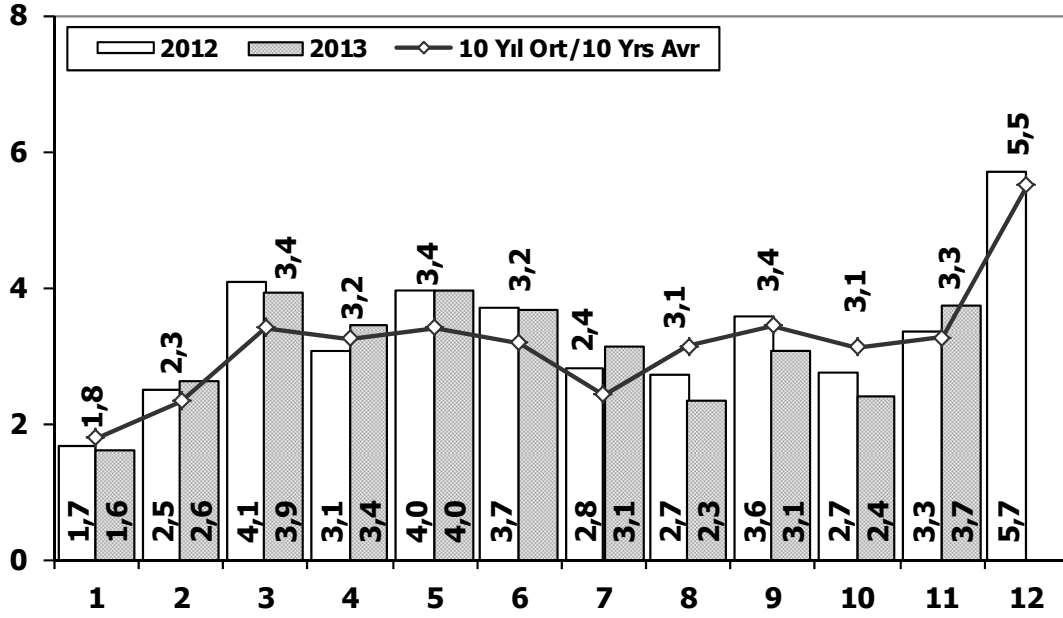
Bus Market



	1	2	3	4	5	6	7	8	9	10	11	12	11 Ay/Mo	Total
2003	54	33	41	87	124	82	60	124	169	128	101	101	1.003	1.104
2004	173	135	215	198	169	143	103	118	90	95	89	78	1.528	1.606
2005	65	81	75	152	174	167	76	149	147	116	109	485	1.311	1.796
2006	78	101	165	247	230	184	84	112	146	84	176	176	1.607	1.783
2007	72	191	129	89	150	91	91	103	110	168	163	241	1.357	1.598
2008	77	85	108	176	151	212	101	165	166	121	141	236	1.503	1.739
2009	100	221	226	224	167	186	85	103	58	75	53	125	1.498	1.623
2010	23	42	102	159	145	151	151	189	107	99	106	251	1.274	1.525
2011	76	198	218	306	364	283	113	189	132	169	170	314	2.218	2.532
2012	120	87	201	139	379	225	152	174	252	226	140	315	2.095	2.410
2013	349	425	498	444	525	483	352	260	215	192	134	0	3.877	3.877

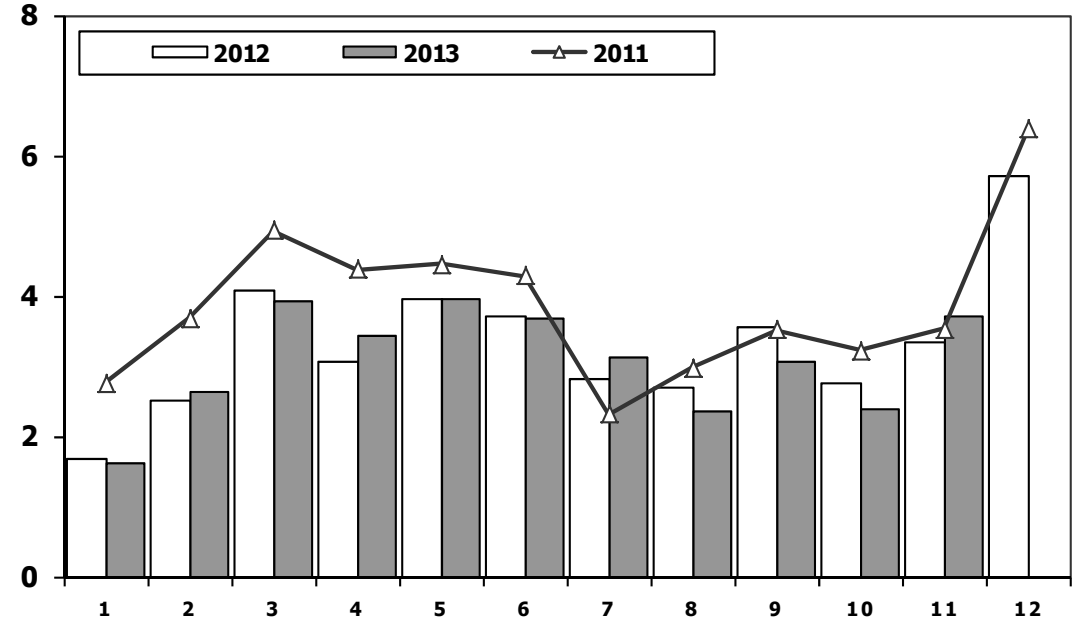
Ağır Ticari Araç Pazarının Analizi (x1000)

HCV Market Analysis (x1000)



Ağır Ticari Araç Pazarı (x1000)

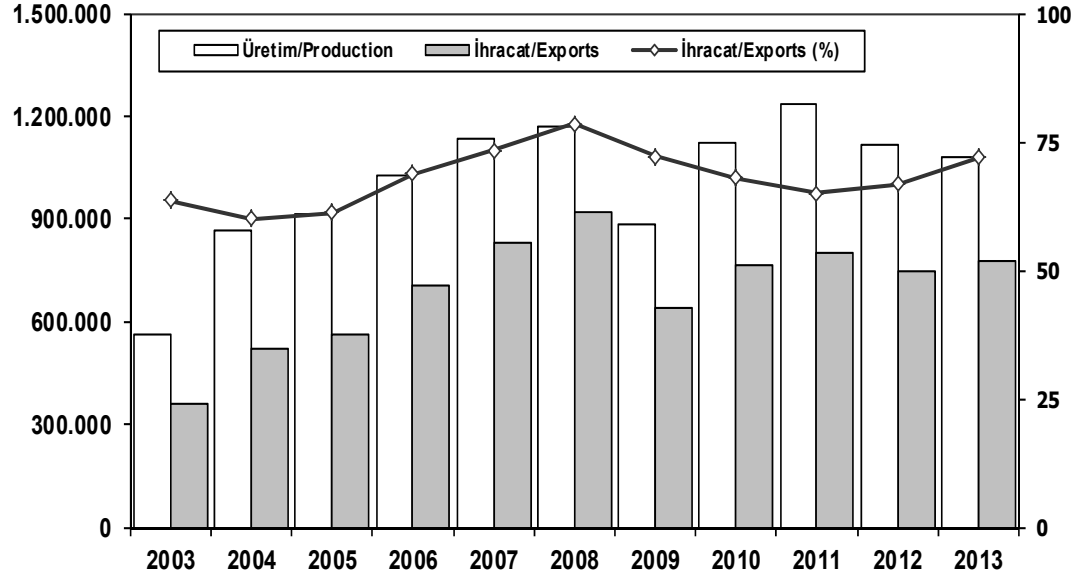
HCV Market (x1000)



Aylar / Months	10 Yil Ort. / 10 Yrs Avr. (x1000)	2013 (x1000)	%
1	1,8	1,6	-9,3
2	2,3	2,6	12,7
3	3,4	3,9	15,1
4	3,2	3,4	6,2
5	3,4	4,0	16,0
6	3,2	3,7	15,7
7	2,4	3,1	28,9
8	3,1	2,3	-25,2
9	3,4	3,1	-10,4
10	3,1	2,4	-23,5
11	3,3	3,7	14,0
Total	32,7	33,9	3,6

	1	2	3	4	5	6	7	8	9	10	11	12	11 Ay/Mo	Total
2003	1.045	915	1.352	1.687	1.950	2.251	2.096	2.936	4.081	4.605	4.033	6.943	26.951	33.894
2004	2.269	2.310	4.579	3.981	4.344	3.498	2.491	3.546	3.820	3.153	3.037	6.146	37.028	43.174
2005	1.940	2.525	3.795	4.029	4.026	3.583	2.832	4.636	4.626	4.153	4.355	7.629	40.500	48.129
2006	2.052	3.708	5.038	4.815	5.060	3.848	2.786	3.607	3.520	3.263	4.031	5.935	41.728	47.663
2007	1.833	2.518	3.598	3.267	3.317	2.987	2.627	3.613	3.497	3.333	3.704	5.150	34.294	39.444
2008	2.265	2.870	3.165	3.266	3.029	3.069	2.536	2.922	2.897	2.263	1.899	2.340	30.181	32.521
2009	1.025	1.104	1.420	1.786	1.696	2.035	1.401	1.483	2.006	1.084	1.240	2.463	16.280	18.743
2010	955	1.141	2.059	2.133	2.251	2.494	2.373	2.881	2.787	3.376	3.444	6.365	25.894	32.259
2011	2.766	3.685	4.930	4.376	4.447	4.290	2.320	2.972	3.514	3.219	3.538	6.371	40.057	46.428
2012	1.674	2.503	4.073	3.065	3.957	3.714	2.818	2.700	3.568	2.739	3.335	5.713	34.146	39.859
2013	1.617	2.624	3.914	3.440	3.953	3.675	3.130	2.340	3.074	2.385	3.718	0	33.870	33.870

İhracat/Üretim Exports/Production



	2003	2004	2005	2006	2007	2008	2009	2010	2011	2012	2013
Üretim/Production	563.450	864.073	916.062	1.026.427	1.132.951	1.171.917	884.466	1.124.982	1.234.637	1.115.233	1.080.038
İhracat/Exports	358.745	518.595	561.078	706.402	829.879	920.763	637.855	763.670	801.112	745.354	776.887
İhracat/Exports (%)	64	60	61	69	73	79	72	68	65	67	72

Taşıt Araçları İhracatı Motor Vehicle Exports

SEKTÖR/SECTOR	2011	2012	2012		2013/2012 (%)
			11 Ay-11 Mo		
OTOMOBİL/ P.Cars	442.674	412.991	377.066	441.670	17
TİCARİ ARAÇLAR / CV	348.292	316.932	287.929	321.802	12
* Kamyonet/Pick-Up	319.366	292.601	266.879	282.155	6
* Minibüs/Minibus	20.163	16.429	13.813	32.201	133
* Kamyon/Truck	3.912	2.682	2.529	2.693	6
* Midibüs/Midibus	647	1.173	960	807	-16
* Otobüs/Bus	4.204	4.047	3.748	3.946	5
TAŞIT ARAÇLARI / MV TOTAL	790.966	729.923	664.995	763.472	15
TRAKTÖR/F.TRACTOR	10.146	15.431	13.692	13.415	-2
TOTAL	801.112	745.354	678.687	776.887	14

Otomotiv Ana ve Yan Sanayii İhracatı (ABD \$) CBU and CKD Exports - \$

SEKTÖR/SECTOR	2010 Toplam (Total)	2011 Toplam (Total)	2012 Toplam (Total)	2012		2013/2012 (%)
				11 Ay (11 Months)		
Toplam Yan Sanayi/Total Component Industry	6.595.662.583	8.307.826.870	8.223.513.061	7.604.046.450	8.344.662.422	10
İç ve Dış Lastik / Tyres	988.990.821	1.373.205.546	1.200.828.712	1.120.600.219	1.044.461.516	-7
Emniyet Camı / Safety Glasses	107.203.983	120.041.467	120.710.174	110.998.670	124.295.950	12
Motor (Engine)	305.490.804	273.896.369	272.085.582	253.184.959	297.262.595	17
Akümülatör / Batteries	186.504.496	232.611.079	250.345.945	222.227.671	275.308.653	24
Diğer Aksam ve Parça / Spare Parts and Components	5.007.472.478	6.308.072.409	6.379.542.648	5.897.034.931	6.603.333.710	12
Toplam Ana Sanayi/Total Vehicle Industry	10.855.476.447	12.128.522.618	11.101.346.096	10.069.258.013	11.419.104.567	13
Otobüs / Bus	744.935.284	929.372.870	856.072.335	781.342.062	814.048.748	4
Midibüs-Minibüs / Minibus- Minibus	120.378.674	145.199.034	161.806.275	144.861.459	137.990.245	-5
Otomobil (P. Cars)	6.217.404.551	6.541.969.418	6.067.964.588	5.508.346.928	6.332.387.811	15
Kamyon-Kamyonet/HCV-LCV	3.363.101.038	4.034.772.621	3.433.318.136	3.094.268.179	3.572.413.380	15
Çekici/Truck-Tractor	145.710.283	116.912.332	195.260.385	69.704.522	69.141.504	-1
Römork ve Yarı Römork/Trailer-Semi Trailer	72.145.150	147.247.613	71.336.635	181.300.544	195.986.933	8
Tarım Traktörü/Farm Tractor	191.801.467	213.048.730	315.587.742	289.434.319	297.135.946	3
Toplam/Total	17.451.139.030	20.436.349.488	19.324.859.157	17.673.304.463	19.763.766.989	12

Firma Bazında İhracat (Adet)
Export Of member Companies (Unit)

FİRMALAR Companies	2011	2012	Ocak-Kasım 11 Months	
			2012	2013
			OYAK RENAULT	225.285
FORD OTOSAN	211.380	191.149	171.038	196.669
TOFAŞ	180.690	154.068	143.008	148.144
TOYOTA	81.233	63.549	59.418	79.108
HYUNDAI ASSAN	64.000	67.453	62.600	73.979
TÜRK TRAKTÖR	9.600	14.572	13.134	12.874
KARSAN	15.119	10.994	10.503	9.874
M. BENZ TÜRK	4.735	4.054	3.812	4.787
HONDA TÜRKİYE	5.023	7.959	7.548	1.820
MAN TÜRKİYE	1.216	885	868	802
A.I.O.S.	429	943	782	641
TEMSA GLOBAL	992	856	743	584
HATTAT TARIM	546	859	558	541
OTOKAR	475	510	382	495
B.M.C.	389	341	339	1
GENEL TOPLAM	801.112	745.354	678.687	776.887

Kaynak: OSD

Sektör Bazında İhracat (\$)
Exports on Sectorial Basis

	Sektörler (Sector)	2012 Toplam (Total)	Ocak-Kasım (January-November)			
			2012	2013	2013/2012 (%)	2013 (%) Pay
1	Otomotiv Endüstrisi *	19.063.427	17.419.133	19.545.377	12,2	14,1
2	Hazırgiyim ve Konfeksiyon	16.088.099	14.669.986	15.950.578	8,7	11,5
3	Kimyevi Maddeler ve Mamülleri	17.542.394	16.107.537	15.839.195	-1,7	11,4
4	Çelik	15.563.898	14.298.514	12.746.139	-10,9	9,2
5	Elektrik-Elektronik ve Makina	11.182.476	10.794.153	10.590.353	-1,9	7,7
6	Tekstil ve Hammaddeleri	7.849.702	7.216.761	7.729.846	7,1	5,6
7	Demir ve Demir Dışı Metaller	6.367.209	5.823.286	6.158.382	5,8	4,5
8	Hububat, Bakliyat, Yağlı Tohumlar	5.887.660	5.365.320	5.915.774	10,3	4,3
9	İhracatçı Birlikleri Kaydından Muaf İhracat	14.150.917	13.084.108	5.850.781	-55,3	4,2
10	Makine ve Aksamları	5.327.524	4.864.851	5.230.084	7,5	3,8
11	Madencilik Ürünleri	4.181.526	3.782.286	4.615.831	22,0	3,3
12	Ağaç Mamülleri, Orman Ürünleri	3.865.766	3.502.281	4.018.583	14,7	2,9
13	İklimlendirme Sanayi	3.797.942	3.488.925	3.838.333	10,0	2,8
14	Çimento ve Toprak Ürünleri	3.102.250	2.859.844	2.908.375	1,7	2,1
15	Mücevher	2.083.084	1.910.174	2.070.993	8,4	1,5
16	Halı	2.011.941	1.821.875	1.993.557	9,4	1,4
17	Yaş Meyve ve Sebze	2.184.807	1.872.176	1.988.494	6,2	1,4
18	Su Ürünleri ve Hayvansal Mamuller	1.664.277	1.484.849	1.804.041	21,5	1,3
19	Deri ve Deri Mamülleri	1.605.069	1.470.993	1.722.910	17,1	1,2
20	Fındık ve Mamülleri	1.805.461	1.633.299	1.606.728	-1,6	1,2
21	Kuru Meyve ve Mamülleri	1.367.594	1.253.873	1.310.653	4,5	0,9
22	Savunma Sanayi	1.262.371	1.088.528	1.226.058	12,6	0,9
23	Meyve Sebze Mamülleri	1.262.119	1.159.900	1.210.571	4,4	0,9
24	Gemi ve Yat	811.246	711.357	1.069.118	50,3	0,8
25	Tütün ve Mamülleri	845.711	779.497	817.156	4,8	0,6
26	Zeytin ve Zeytinyağı	201.552	174.558	412.788	136,5	0,3
27	Diğer Sanayi Ürünleri	82.451	74.553	96.205	29,0	0,1
28	Süs Bitkileri	73.177	67.196	70.172	4,4	0,1
	TOPLAM	151.860.946	138.779.813	138.337.075	-0,3	100,0

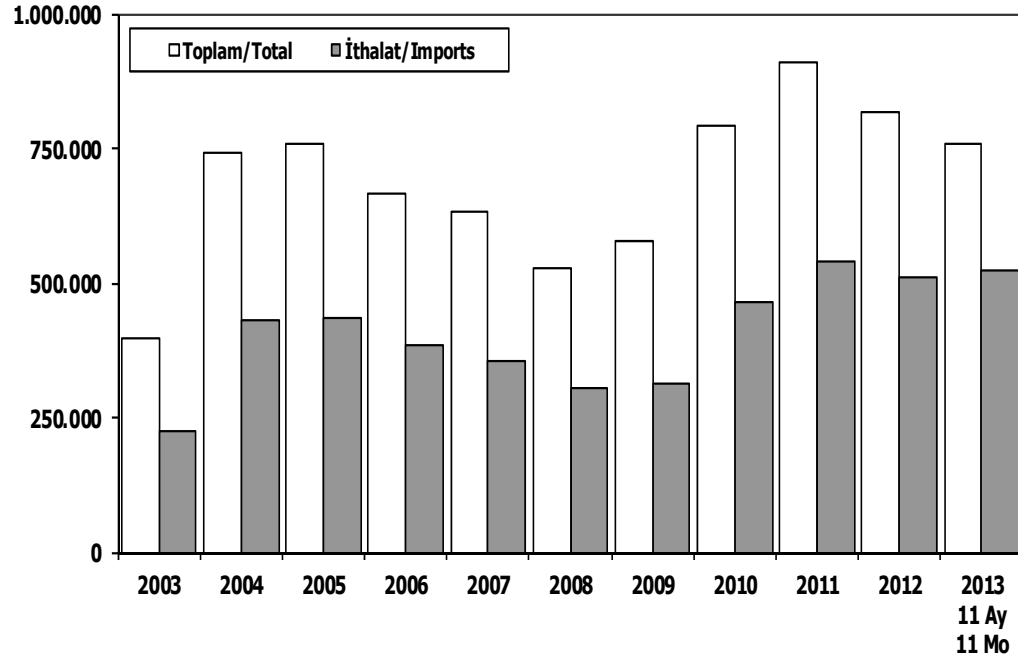
*(Hava, kara, deniz ve demiryolu taşıtları toplamı)

Kaynak: TİM

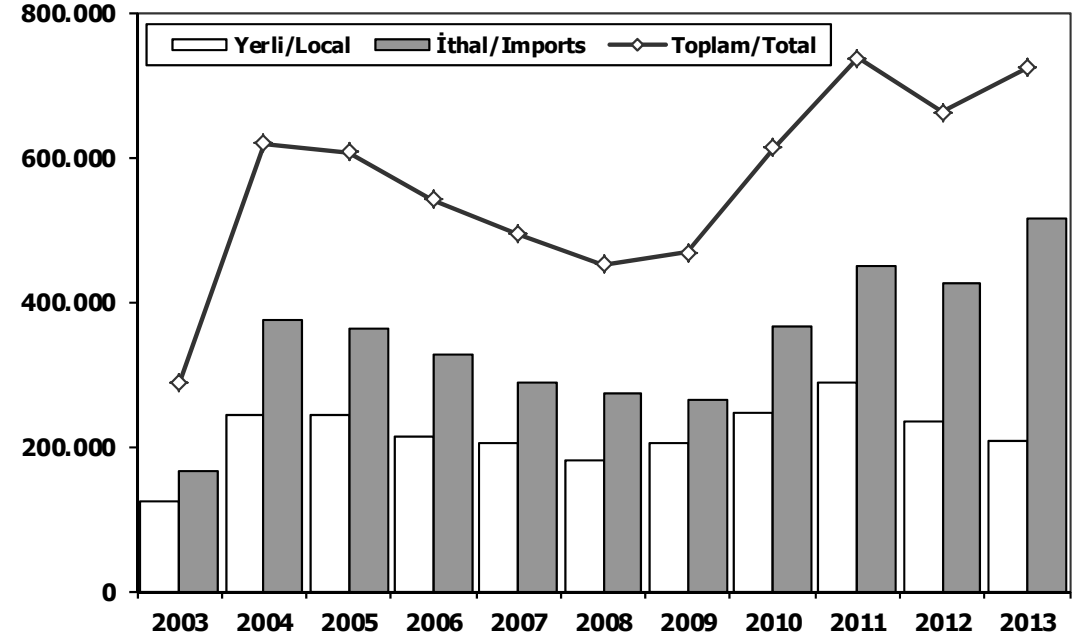
First 5 Sectors:

- 1- Transport Vehicle and Component Industry
- 2-Ready Wear and Confection
- 3-Chemical Articles and Products
- 4- Iron Steel Products
- 5-Electric-Electronic and Machine

Toplam Pazar (Otomobil+T.Araç) Total Market (P.Cars+C.V)



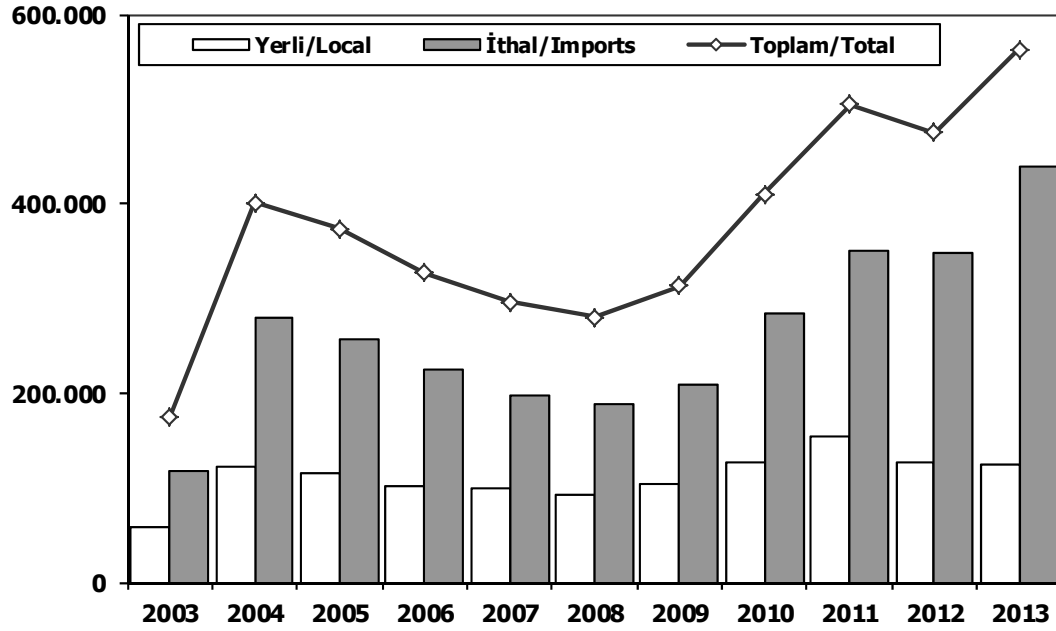
Hafif Araçlar Pazarı (2003-2013 Ocak-Kasım) LV Market (2003-2013 January-November)



	2003	2004	2005	2006	2007	2008	2009	2010	2011	2012	2012 11 Ay 11 Mo	2013 11 Ay 11 Mo		2003	2004	2005	2006	2007	2008	2009	2010	2011	2012	2013
Toplam/Total	397.963	741.269	758.537	665.515	634.206	526.544	575.869	793.172	910.867	817.620	696.507	757.530	Yerli/Local	123.650	244.357	243.206	212.937	205.320	179.578	204.509	246.963	287.751	235.644	208.198
İthalat/Imports	222.984	430.204	436.033	382.460	355.752	306.087	313.921	465.408	538.532	511.694	435.652	523.179	İthal/Imports	164.641	374.814	363.993	328.128	288.516	272.367	263.694	365.581	448.778	426.717	515.462
İthalat/Imports (%)	56	58	57	57	56	58	55	59	59	63	63	69	Toplam/Total	288.291	619.171	607.199	541.065	493.836	451.945	468.203	612.544	736.529	662.361	723.660
													İthalat/Imports (%)	57	61	60	61	58	60	56	60	61	64	71

Otomobil Pazarı (2003-2013 Ocak-Kasım)

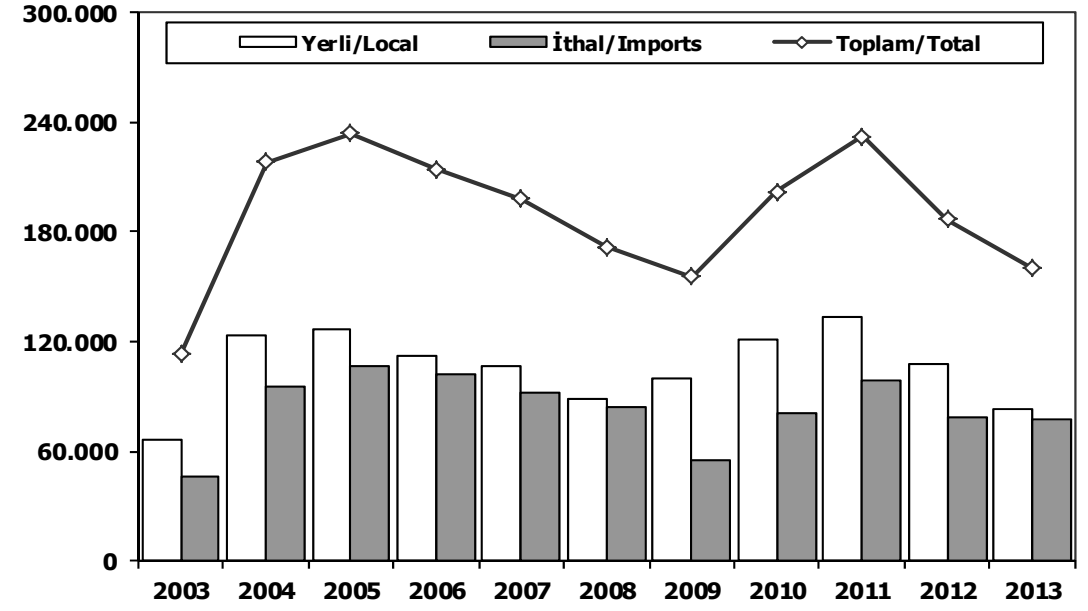
P.Cars Market (2003-2013 January-November)



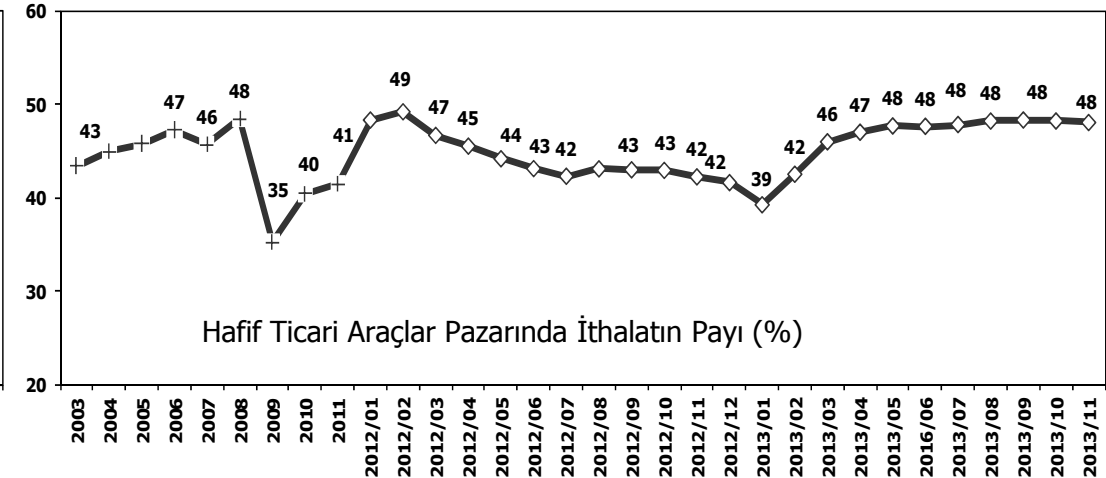
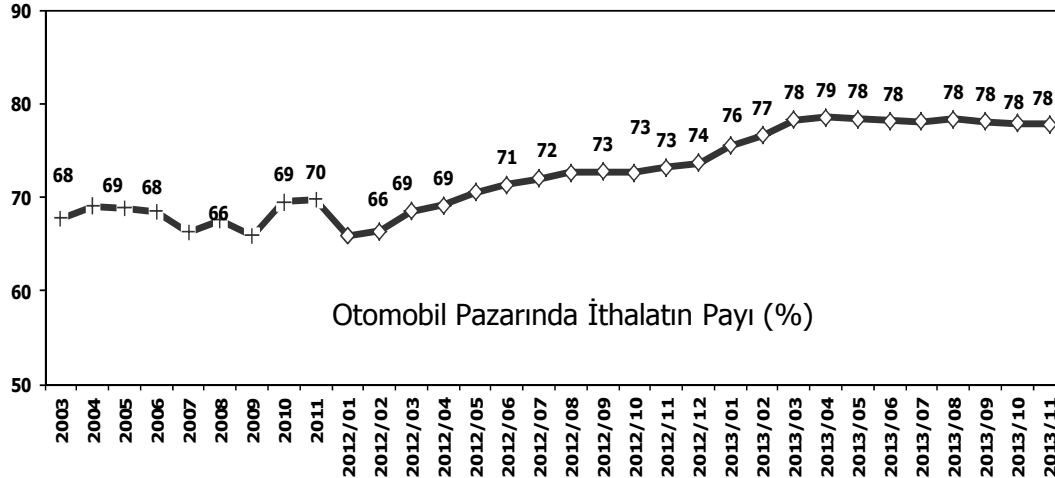
	2003	2004	2005	2006	2007	2008	2009	2010	2011	2012	2013
Yerli/Local	57.351	121.419	116.238	101.288	98.765	91.347	104.322	126.084	154.660	127.535	124.906
İthal/Imports	118.224	279.593	256.912	225.580	196.955	188.772	208.319	284.239	349.902	347.819	438.550
Toplam/Total	175.575	401.012	373.150	326.868	295.720	280.119	312.641	410.323	504.562	475.354	563.456
İthalat/Imports (%)	67	70	69	69	67	67	67	69	69	73	78

Hafif Ticari Araçlar Pazarı (2003-2013 Ocak-Kasım)

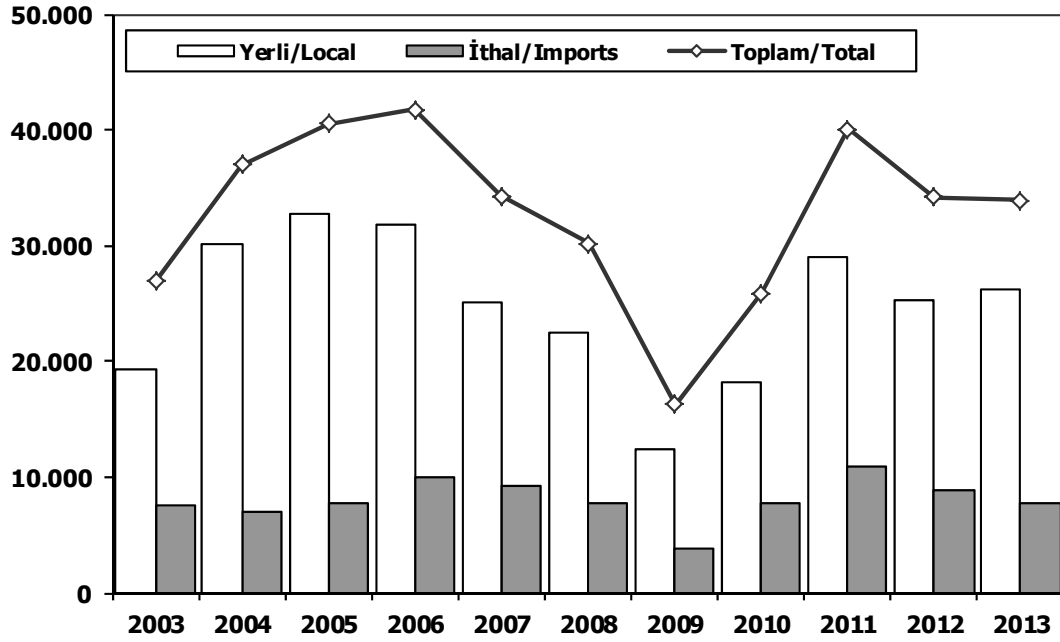
Light Commercial Vehicle Market (2003-2013 January-November)



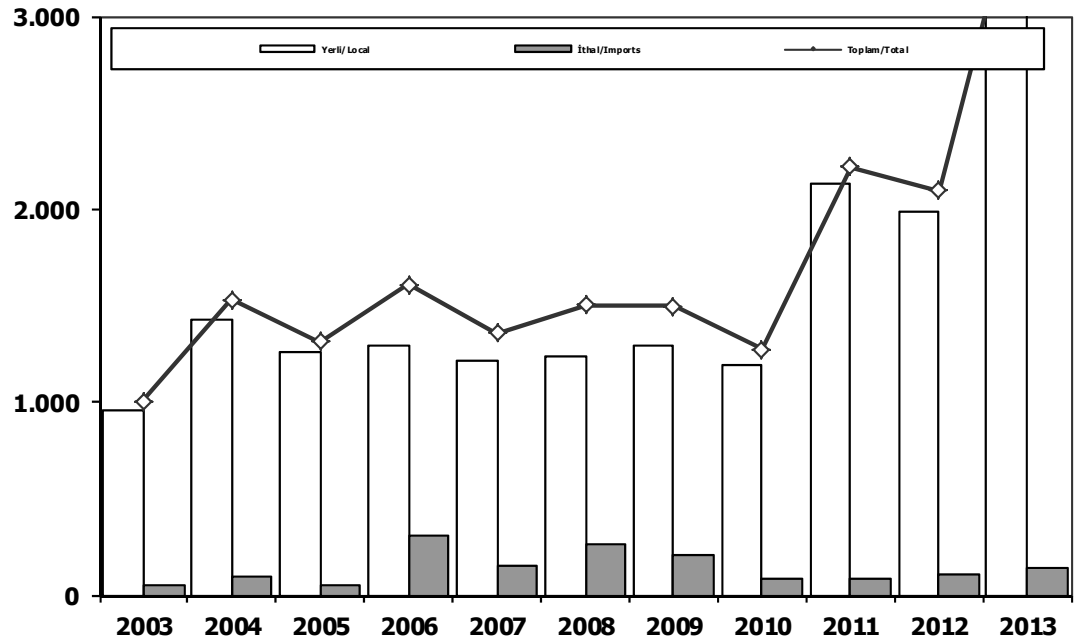
	2003	2004	2005	2006	2007	2008	2009	2010	2011	2012	2013
Yerli/Local	66.299	122.938	126.968	111.649	106.555	88.231	100.187	120.879	133.091	108.109	83.292
İthal/Imports	46.417	95.221	107.081	102.548	91.561	83.595	55.375	81.342	98.876	78.898	76.912
Toplam/Total	112.716	218.159	234.049	214.197	198.116	171.826	155.562	202.221	231.967	187.007	160.204
İthalat/Imports (%)	41	44	46	48	46	49	36	40	43	42	48



Ağır Ticari Araçlar Pazarı (2003-2013 Ocak-Kasım) HCV Market (2003-2013 January-November)



Otobüs Pazarı (2003-2013 Ocak-Kasım) Bus Market (2003-2013 January-November)

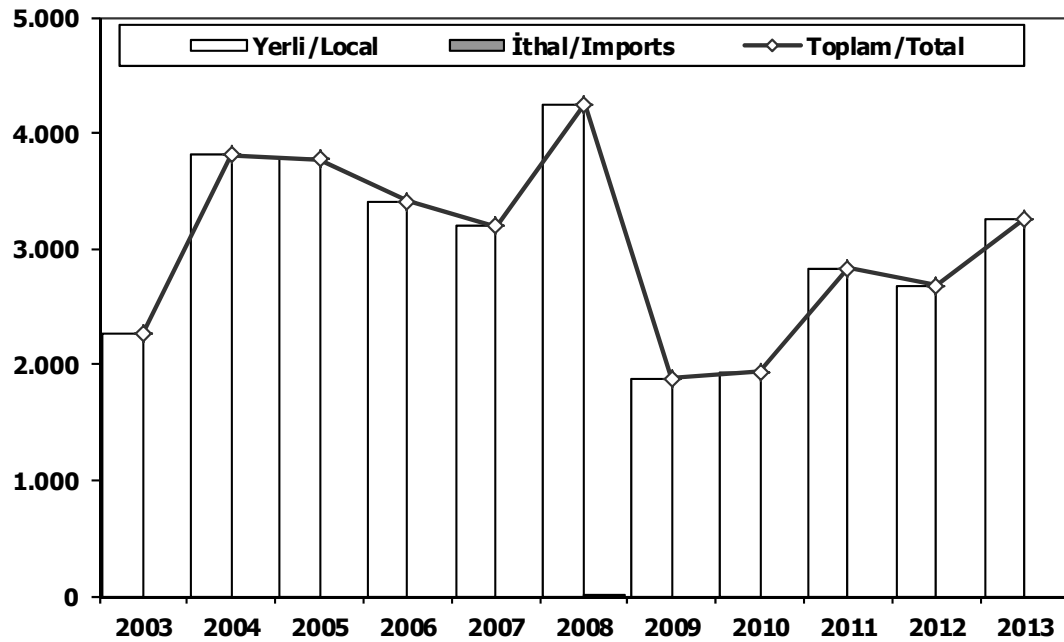


	2003	2004	2005	2006	2007	2008	2009	2010	2011	2012	2013
Yerli/Local	19.331	30.093	32.680	31.760	25.077	22.518	12.418	18.186	29.068	25.211	26.153
İthal/Imports	7.620	6.935	7.820	9.968	9.217	7.663	3.862	7.708	10.989	8.935	7.717
Toplam/Total	26.951	37.028	40.500	41.728	34.294	30.181	16.280	25.894	40.057	34.146	33.870
İthalat/Imports (%)	28	19	19	24	27	25	24	30	27	26	23

	2003	2004	2005	2006	2007	2008	2009	2010	2011	2012	2013
Yerli/Local	957	1.430	1.256	1.295	1.209	1.238	1.292	1.188	2.133	1.986	3.742
İthal/Imports	46	98	55	312	148	265	206	86	85	109	135
Toplam/Total	1.003	1.528	1.311	1.607	1.357	1.503	1.498	1.274	2.218	2.095	3.877
İthalat/Imports (%)	5	6	4	19	11	18	14	7	4	5	3

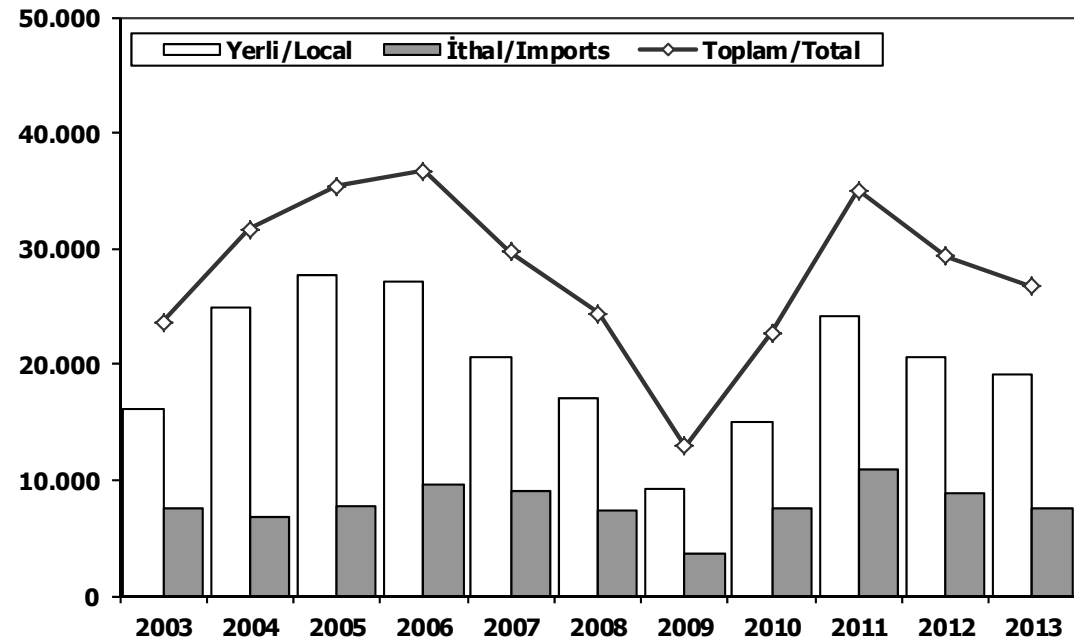
Midibüs Pazarı (2003-2013 Ocak-Kasım) (7-9 mt / 25-35 Kişilik)

Midibus (2003-2013 January-November) Market (7-9 mt / 25-35 Passengers)



Kamyon Pazarı (2003-2013 Ocak-Kasım)

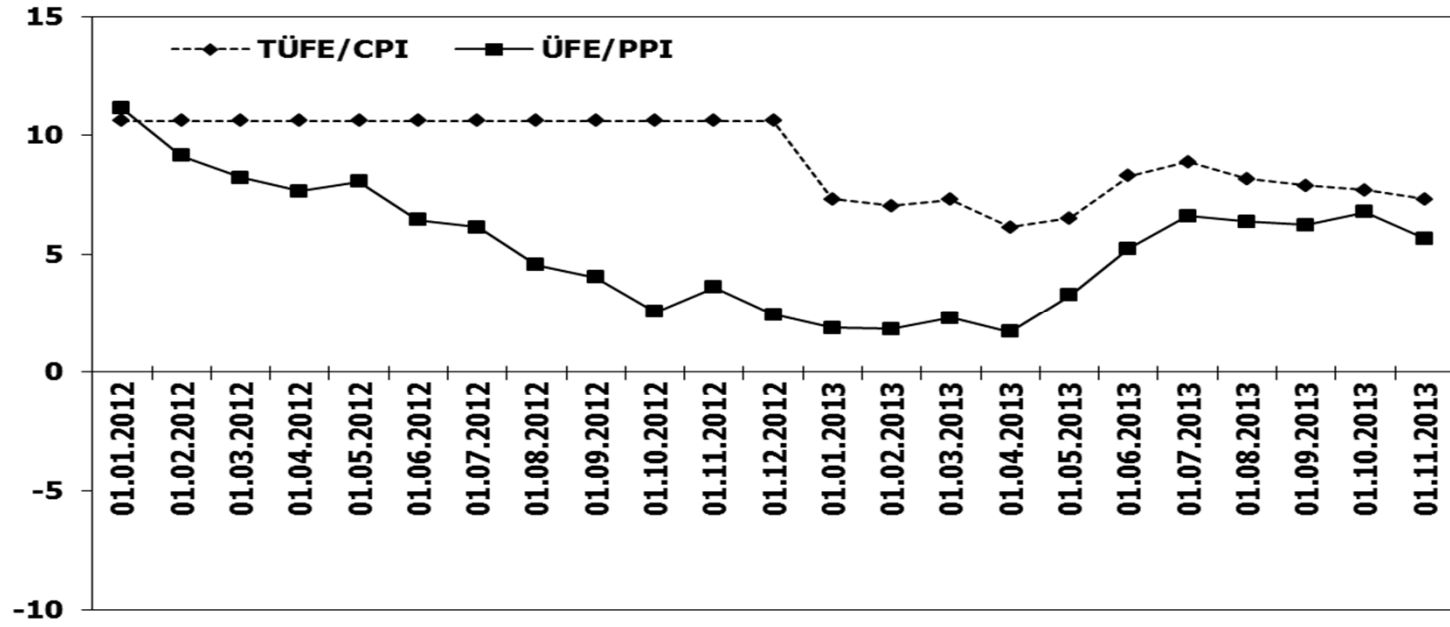
Truck Market (2003-2013 January-November)



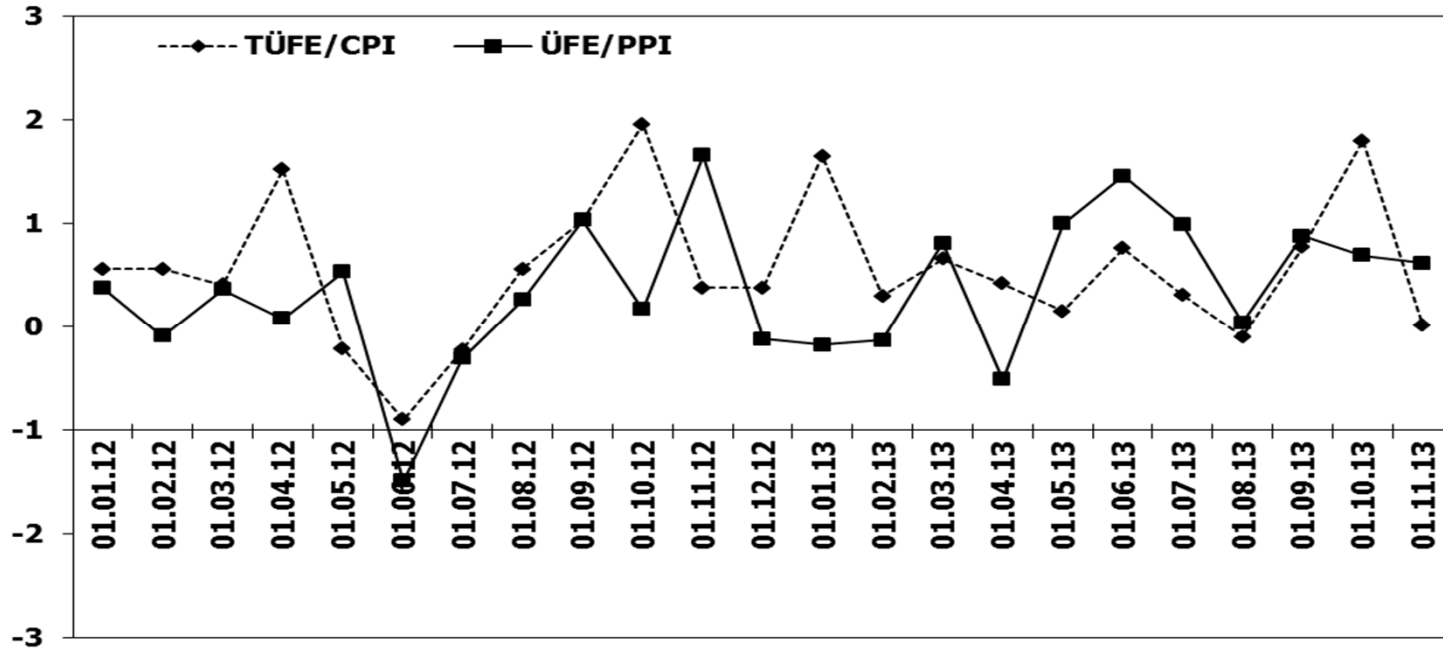
	2003	2004	2005	2006	2007	2008	2009	2010	2011	2012	2013
Yerli/Local	2.258	3.812	3.777	3.408	3.196	4.241	1.882	1.935	2.834	2.686	3.258
İthal/Imports	0	0	0	0	0	11	0	0	0	0	0
Toplam/Total	2.258	3.812	3.777	3.408	3.196	4.252	1.882	1.935	2.834	2.686	3.258
İthalat/Imports (%)	0	0	0	0	0	0	0	0	0	0	0

	2003	2004	2005	2006	2007	2008	2009	2010	2011	2012	2013
Yerli/Local	16.116	24.851	27.647	27.057	20.672	17.039	9.244	15.063	24.101	20.539	19.153
İthal/Imports	7.574	6.837	7.765	9.656	9.069	7.387	3.656	7.622	10.904	8.826	7.582
Toplam/Total	23.690	31.688	35.412	36.713	29.741	24.426	12.900	22.685	35.005	29.365	26.735
İthalat/Imports (%)	32	22	22	26	30	30	28	34	31	30	28

TÜFE ve ÜFE'nin Yıllık Değişimi (%) CPI and PPI Yearly Changes (%)



TÜFE ve ÜFE'nin Aylık Değişimi (%) CPI and PPI Monthly Changes (%)



2013 Otomotiv Sanayii Dış Satışlar 2013 Automotive Industry Exports Sales

TIPLER/TYPES	1	2	3	4	5	6	7	8	9	10	11	12	Total
OTOMOBİL	27.961	40.919	41.864	40.090	44.747	37.451	47.491	27.844	45.991	40.041	47.271	0	441.670
TİCARİ ARAÇ	29.704	31.907	33.018	29.906	30.600	32.690	33.425	11.842	30.690	25.498	32.522	0	321.802
* KAMYON	29	121	132	102	140	148	254	361	551	392	463	0	2.693
* KAMYONET	26.802	28.525	29.082	26.320	27.522	28.685	29.647	9.980	26.424	21.829	27.339	0	282.155
* MİDİBÜS	80	113	101	62	26	105	58	109	41	65	47	0	807
* MİNİBÜS	2.603	2.903	3.373	3.062	2.561	3.352	3.039	1.126	3.267	2.739	4.176	0	32.201
* OTOBÜS	190	245	330	360	351	400	427	266	407	473	497	0	3.946
TRAKTÖR	783	1.332	1.343	1.278	1.266	1.352	1.201	749	1.438	1.093	1.580	0	13.415
TOTAL	58.448	74.158	76.225	71.274	76.613	71.493	82.117	40.435	78.119	66.632	81.373	0	776.887

Otomobil / Passenger Car

TIPLER/TYPES	1	2	3	4	5	6	7	8	9	10	11	12	Total
HONDA TÜRKİYE	85	403	180	30	302	123	189	269	90	100	49		1.820
HYUNDAI ASSAN	1.700	6.980	7.000	6.800	7.689	6.700	6.200	4.700	7.710	8.650	9.850		73.979
OYAK RENAULT	18.126	24.974	25.905	26.213	28.640	19.121	27.102	9.655	24.537	18.465	23.830		246.568
TOFAŞ	3.457	4.620	4.409	3.510	4.053	3.654	3.254	2.173	4.154	2.991	3.920		40.195
TOYOTA	4.593	3.942	4.370	3.537	4.063	7.853	10.746	11.047	9.500	9.835	9.622		79.108
TOTAL	27.961	40.919	41.864	40.090	44.747	37.451	47.491	27.844	45.991	40.041	47.271	0	441.670

Kamyonet / Pick-Up

TIPLER/TYPES	1	2	3	4	5	6	7	8	9	10	11	12	Total
FORD OTOSAN	15.948	15.890	17.206	15.873	16.543	17.650	17.065	5.150	14.959	12.477	15.345		164.106
KARSAN	1.087	960	907	876	1.108	1.040	1.199	244	966	630	840		9.857
OTOKAR	0	0	26	0	0	48	10	0	44	3	12		143
TEMSA GLOBAL	0	0	0	0	2	11	33	4	32	18	0		100
TOFAŞ	9.767	11.675	10.943	9.571	9.869	9.936	11.340	4.582	10.423	8.701	11.142		107.949
TOTAL	26.802	28.525	29.082	26.320	27.522	28.685	29.647	9.980	26.424	21.829	27.339	0	282.155

Minibüs / Minibus

TIPLER/TYPES	1	2	3	4	5	6	7	8	9	10	11	12	Total
FORD OTOSAN	2.602	2.903	3.373	3.061	2.557	3.351	3.038	1.117	3.266	2.737	4.170		32.175
KARSAN	0	0	0	1	0	1	1	0	0	0	4		7
OTOKAR	1	0	0	0	4	0	0	9	1	2	2		19
TOTAL	2.603	2.903	3.373	3.062	2.561	3.352	3.039	1.126	3.267	2.739	4.176	0	32.201

Kamyon / Truck

TIPLER/TYPES	1	2	3	4	5	6	7	8	9	10	11	12	Total
FORD OTOSAN	1	18	21	15	31	33	44	37	34	30	124		388
KARSAN	0	0	0	0	0	1	0	0	0	9	0		10
M. BENZ TÜRK	28	102	110	87	108	111	206	324	516	340	336		2.268
TEMSA GLOBAL	0	1	1	0	1	3	4	0	1	13	3		27
TOTAL	29	121	132	102	140	148	254	361	551	392	463	0	2.693

Midibüs / Midibus

TIPLER/TYPES	1	2	3	4	5	6	7	8	9	10	11	12	Total
A.I.O.S.	69	94	82	51	12	92	47	75	21	56	17		616
OTOKAR	11	19	19	11	13	12	11	33	20	8	28		185
TEMSA GLOBAL	0	0	0	0	1	1	0	1	0	1	2		6
TOTAL	80	113	101	62	26	105	58	109	41	65	47	0	807

Otobüs / Bus

TIPLER/TYPES	1	2	3	4	5	6	7	8	9	10	11	12	Total
A.I.O.S.	4	0	7	0	0	0	0	0	0	1	13		25
B.M.C.	0	1	0	0	0	0	0	0	0	0	0		1
M. BENZ TÜRK	88	128	153	243	190	302	313	185	265	332	320		2.519
MAN TÜRKİYE	71	74	108	64	85	59	51	23	70	89	108		802
OTOKAR	0	3	8	5	38	7	7	16	17	18	29		148
TEMSA GLOBAL	27	39	54	48	38	32	56	42	55	33	27		451
TOTAL	190	245	330	360	351	400	427	266	407	473	497	0	3.946

Traktör / Farm Tractor

TIPLER/TYPES	1	2	3	4	5	6	7	8	9	10	11	12	Total
HATTAT TARIM	9	16	46	64	63	77	99	37	13	35	82		541
TÜRK TRAKTÖR	774	1.316	1.297	1.214	1.203	1.275	1.102	712	1.425	1.058	1.498		12.874
TOTAL	783	1.332	1.343	1.278	1.266	1.352	1.201	749	1.438	1.093	1.580	0	13.415

2013 Yılı İthal Hafif Araç Satışları 2013 Light Vehicles Import Sales

2013 Yılı İthal Otomobil Satışları / P.Cars Imports 2013

	2012 Total	1	2	3	4	5	6	7	8	9	10	11	12	Total
VOLKSWAGEN	66.792	4.053	5.447	7.235	7.852	7.588	7.027	8.323	7.374	7.364	7.826	8.579		78.668
FORD	47.030	1.624	2.520	3.657	5.064	6.463	5.027	4.664	3.786	4.208	4.051	6.044		47.108
OPEL	49.143	1.805	2.486	5.116	4.661	5.258	5.020	4.386	4.867	3.990	3.139	4.815		45.543
RENAULT	5.965	228	1.641	2.984	3.045	3.161	2.674	3.086	3.423	2.467	1.835	2.894		27.438
HYUNDAI	25.141	1.152	1.594	2.612	2.711	2.830	3.028	1.950	2.460	2.545	2.273	2.665		25.820
DACIA	27.666	1.487	1.687	2.181	2.466	2.395	2.637	2.594	2.362	2.404	1.555	2.331		24.099
TOYOTA	20.099	559	1.742	2.250	2.510	2.797	2.475	1.493	1.300	1.030	1.495	2.175		19.826
PEUGEOT	14.519	1.088	1.422	2.017	1.987	1.625	1.772	1.649	1.587	1.711	1.263	2.147		18.268
B.M.W	15.247	469	1.222	1.564	1.301	1.909	2.043	1.801	1.578	1.711	1.415	2.401		17.414
MERCEDES	12.730	629	1.003	1.357	1.262	2.036	1.965	2.150	1.698	2.002	1.228	1.687		17.017
CITROEN	14.711	1.189	1.598	1.595	1.743	1.487	2.071	1.520	1.041	1.542	1.326	1.563		16.675
NISSAN	18.873	628	789	1.434	1.620	1.533	1.461	1.172	1.577	2.102	1.677	1.783		15.776
AUDI	13.720	649	804	1.343	1.352	1.357	1.000	1.215	1.114	902	1.071	1.577		12.384
KIA	11.870	709	689	959	1.294	1.483	995	983	941	921	987	1.441		11.402
SKODA	10.118	447	503	904	1.094	1.355	1.181	1.090	1.129	1.094	788	1.484		11.069
CHEVROLET	18.492	854	779	1.287	1.329	891	1.025	1.124	934	824	781	1.046		10.874
SEAT	5.811	302	477	596	751	926	1.061	1.226	1.189	967	865	1.169		9.529
FIAT	8.774	598	520	550	861	1.210	1.085	1.032	1.180	845	652	980		9.513
VOLVO	5.247	164	229	411	506	507	314	374	379	413	453	486		4.236
HONDA	2.728	126	182	322	410	309	219	240	166	153	172	561		2.860
SUZUKI	1.780	131	123	146	128	126	129	132	131	86	164	147		1.443
MINI (İngiliz)	1.758	65	123	144	92	170	169	143	111	92	74	152		1.335
MITSUBISHI	1.289	60	131	79	125	144	82	94	91	107	126	236		1.275
MAZDA	810	27	23	43	113	131	113	104	65	104	191	217		1.131
LAND ROVER	1.590	49	160	224	63	69	58	98	63	59	105	167		1.115
SUBARU	640	34	53	43	63	55	71	146	122	154	92	139		972
ALFA ROMEO	1.052	65	73	81	137	177	64	51	54	57	56	66		881
SSANGYONG	946	65	76	85	87	69	65	81	90	71	53	78		820
JEEP	799	43	84	53	76	65	40	65	108	82	80	99		795
LANCIA	276	10	9	27	36	51	156	67	45	109	64	86		660
GEELEY	1.019	36	65	26	39	82	117	60	45	40	40	66		616
CHERY	810	32	73	95	73	36	43	31	35	28	20	26		492
PROTON	760	30	20	25	75	100	25	25	15	35	30	100		480
PORSCHE	497	16	32	40	50	39	35	49	46	41	34	42		424
TATA	684	59	74	75	55	35	7	7	7	2	2	2		325
JAGUAR	84	14	12	25	2	12	1	4	5	5	5	5		90
SMART	96	10	11	2	2	12	22	6	4	4	3	11		87
INFINITI	41	2	1	2	2	6	2	3	3	2	0	3		26
MASERATI	18	0	2	1	1	1	1	2	4	2	5	3		22
FERRARI	21	0	2	3	3	3	1	3	0	2	2	1		20
BENTLEY	18	0	1	2	2	4	1	3	1	1	3	0		18
LAMBORGHINI	2	0	0	2	0	0	0	0	0	1	0	0		3
ASTON MARTIN	10	1	0	0	0	0	0	0	0	1	0	0		2
Total	409.676	19.509	28.482	41.597	45.043	48.507	45.282	43.246	41.130	40.280	36.001	49.474	0	438.551

2013 Yılı İthal Hafif Ticari Araç Satışları / Light Commercial Vehicles Imports 2013

	2012 Total	1	2	3	4	5	6	7	8	9	10	11	12	Total
VOLKSWAGEN	26.048	1.109	1.637	2.153	2.393	2.679	2.088	2.413	1.912	1.861	1.402	1.643		21.290
RENAULT	16.331	715	767	1.090	1.043	1.153	863	788	731	877	678	1.018		9.723
MERCEDES	9.234	367	575	935	929	883	902	1.113	1.005	1.130	488	785		9.112
PEUGEOT	9.112	173	262	835	594	1.076	1.002	455	623	388	258	774		6.440
DACIA	1.298	16	88	805	751	856	818	800	604	569	368	559		6.234
CITROEN	7.672	156	379	860	732	902	363	527	325	676	355	422		5.697
FIAT	4.962	305	386	435	480	577	308	435	564	653	523	600		5.266
MITSUBISHI	2.684	170	209	372	282	197	266	373	285	322	230	177		2.883
ISUZU	2.296	125	145	203	206	314	199	180	144	121	248	228		2.113
TOYOTA	2.615	95	162	196	158	195	185	177	223	243	147	311		2.092
IVECO	1.673	61	98	165	161	235	189	175	148	188	185	219		1.824
HYUNDAI	2.454	173	107	62	145	123	92	88	92	148	94	142		1.266
NISSAN	1.247	44	126	204	93	53	41	84	74	45	33	45		842
SSANGYONG	1.143	109	61	87	66	66	85	48	57	79	65	51		774
FORD	737	117	101	87	65	81	56	53	25	22	13	13		633
KIA	845	38	26	27	52	42	19	18	28	48	43	44		385
TATA	360	25	31	26	25	27	25	28	26	25	32	26		296
DFM	921	0	39	0	0	0	0	0	0	0	0	0		39
MAZDA	203	0	0	0	0	2	0	0	0	0	1	0		3
OPEL	247	0	0	0	0	0	0	0	0	0	0	0		0
Total	92.082	3.798	5.199	8.542	8.175	9.461	7.501	7.755	6.866	7.395	5.163	7.057	0	76.912