



# AYLIK RAPOR

## Automotive Industry Monthly Report

Mayıs / May 2014

- **Üretim**/Production
- **Satış**/Sales
- **İthalat**/Imports
- **İhracat**/Exports

OSD "OICA" Üyesidir



OSD is a Member of "OICA"

## 2014 Mayıs Ayı Özeti / 2014 May Summary

KONULAR/ MATTERS		MAYIS / MAY			5 AY/ 5 MONTHS			SON 12 AYLIK / YoY		
		2013	2014	2014/2013 (%)	2013	2014	2014/2013 (%)	2013	2014	2014/2013 (%)
Üretim/ Production	Toplam/ Total	96.918	101.498	5	467.372	455.980	-2	1.070.984	1.114.142	4
	Otomobil/ P.Cars	54.157	62.470	15	247.794	291.469	18	566.149	677.279	20
Pazar/ Market	Toplam/ Total	85.421	61.866	-28	323.195	241.250	-25	855.978	811.179	-5
	Otomobil/ P.Cars	62.383	46.379	-26	233.816	178.495	-24	596.455	609.334	2
İthalat/ Import	Toplam/ Total	58.906	41.236	-30	221.960	161.937	-27	550.061	547.865	0
	Otomobil/ P.Cars	48.507	34.722	-28	183.138	134.030	-27	456.311	468.419	3
İhracat/ Export	Toplam/ Total	75.347	81.928	9	350.716	367.850	5	753.013	845.605	12
	Otomobil/ P.Cars	44.747	50.550	13	195.581	242.696	24	423.079	531.619	26
İhracat / Export (\$)	Toplam/ Total **	1.863.082.070	2.094.962.043	12	8.805.040.743	9.867.976.051	12	19.744.410.681	20.669.858.953	5
	Otomobil/ P.Cars	644.793.336	676.855.872	5	2.905.795.929	3.211.700.809	11	6.255.292.081	6.489.029.433	4

PARAMETRELER / PARAMETERS		MAYIS / MAY			5 AY/ 5 MONTHS			SON 12 AYLIK / YoY		
		2013	2014	2014/2013 (%)	2013	2014	2014/2013 (%)	2013	2014	2014/2013 (%)
ÜFE/ PPI		1,00	-0,52	**	0,99	5,06	**	3,27	11,28	**
TÜFE/ CPI		0,15	0,40	**	3,21	5,38	**	6,51	9,66	**
Sanayi Endeksi/ Industry Index		-0,07	-0,20	**	1,67	6,27	**	1,97	13,35	**
\$ (*)		1,8774	2,0954	12	1,8278	2,1719	19	1,8099	2,0760	15
EURO (*)		2,3563	2,8522	21	2,3768	2,9764	25	2,3304	2,8156	21
Japon Yeni (*)		1,8551	2,0663	11	1,9123	2,1246	11	2,1022	2,0509	-2

(\*) Ortalama Değerler / Average Values

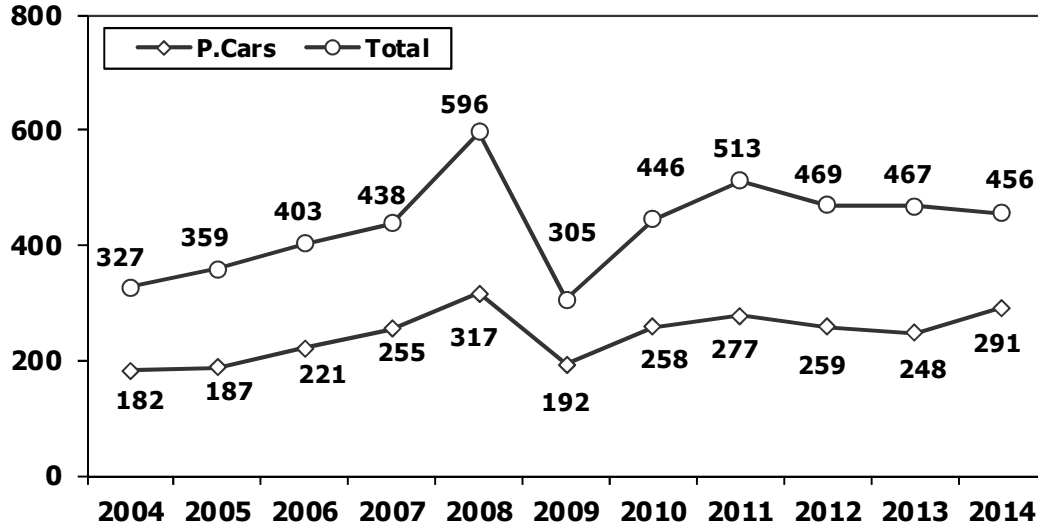
(\*\*) Toplam Sanayi / Total Industry Including Components

## 2013/2014 Yılları Üretim 2013/2014 Production

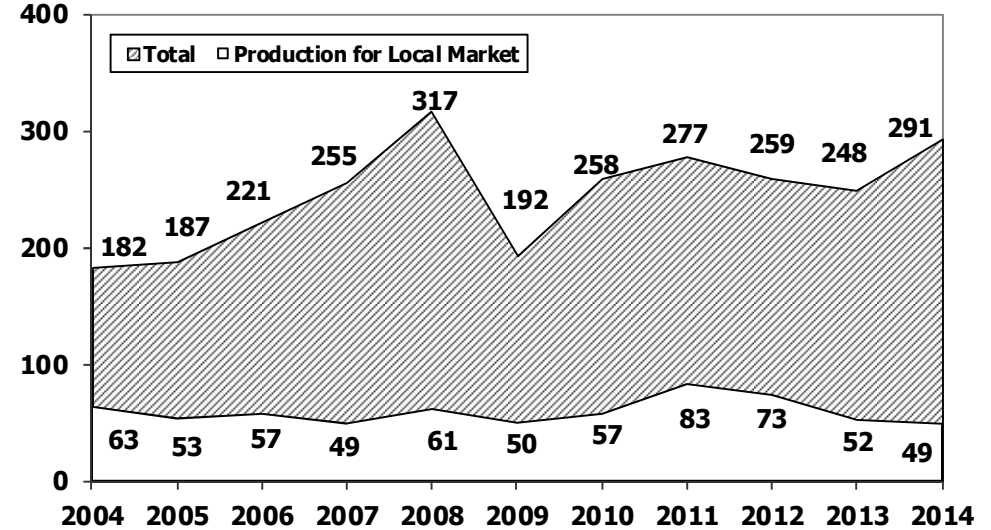
K.KAMYON : AYA 3.5-12 Ton (L.Truck:GWV 3.5-12 Ton)  
B.KAMYON : AYA 12 Ton'dan Büyük (M.Truck:GWV 12 Ton And Up)

TİPLER	MAYIS AYI ÜRETİMİ May Production		5 AYLIK ÜRETİM 5 Months Production		DEĞİŞİM % Percent Change %	
	2013	2014	2013	2014	MAYIS May	5 AY 5 Months
<b>OTOMOBİL - Pass.Car</b>	<b>54.157</b>	<b>62.470</b>	<b>247.794</b>	<b>291.469</b>	<b>15</b>	<b>18</b>
<b>TİCARİ ARAÇLAR - Commercial Vehicles</b>	<b>42.761</b>	<b>39.028</b>	<b>219.578</b>	<b>164.511</b>	<b>-9</b>	<b>-25</b>
* B. KAMYON - M. Truck	2.284	2.336	10.446	10.184	2	-3
* K. KAMYON - L. Truck	347	278	1.697	1.392	-20	-18
* KAMYONET - Pick Up	36.020	32.209	186.053	135.183	-11	-27
* OTOBÜS - Bus	793	561	3.817	2.830	-29	-26
* MİNİBÜS - Minibus	2.864	3.190	15.408	12.258	11	-20
* MİDİBÜS - Midibus	453	454	2.157	2.664	0	24
<b>TAŞIT ARAÇLARI TOPLAM - MV Total</b>	<b>96.918</b>	<b>101.498</b>	<b>467.372</b>	<b>455.980</b>	<b>5</b>	<b>-2</b>
<b>TRAKTÖR - F.Tractor</b>	<b>3.393</b>	<b>4.150</b>	<b>16.275</b>	<b>20.250</b>	<b>22</b>	<b>24</b>
<b>GENEL TOPLAM - Grand Total</b>	<b>100.311</b>	<b>105.648</b>	<b>483.647</b>	<b>476.230</b>	<b>5</b>	<b>-2</b>

**Toplam Üretim ve Otomobil Üretimi** (x1000) (Ocak-Mayıs)  
Total & P.Cars Production (x1000) (January- May)



**Otomobil Üretimi ve İhracat** (x1000) (Ocak-Mayıs)  
P.Cars Production & Exports (x1000) (January- May)



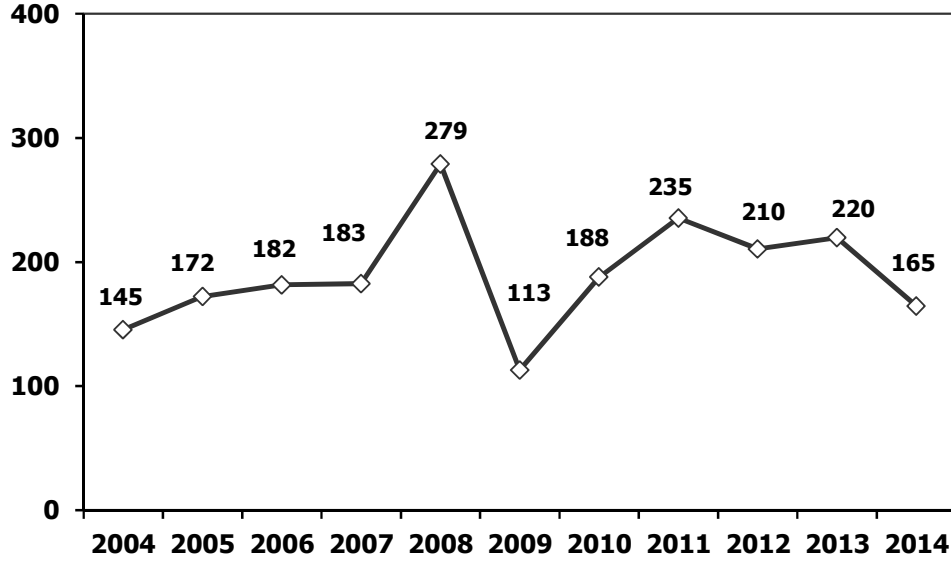
## 5 Aylık Üretim (5 Months Production)

FİRMALAR	OTOMOBİL	%	K.KAMYON	%	B.KAMYON	%	KAMYONET	%	OTOBÜS	%	MİNİBÜS	%	MİDİBÜS	%	TRAKTÖR	%	TOPLAM
<b>A.I.O.S.</b>	0	0	1.213	87	0	0	670	0	37	1	0	0	863	32	0	0	<b>2.783</b>
<b>FORD OTOSAN</b>	0	0	0	0	2.637	26	70.502	52	0	0	11.865	97	0	0	0	0	<b>85.004</b>
<b>HATTAT TARIM</b>	0	0	0	0	0	0	0	0	0	0	0	0	0	0	1.178	6	<b>1.178</b>
<b>HONDA TÜRKİYE</b>	5.893	2	0	0	0	0	0	0	0	0	0	0	0	0	0	0	<b>5.893</b>
<b>HYUNDAI ASSAN</b>	78.989	27	0	0	0	0	0	0	0	0	0	0	0	0	0	0	<b>78.989</b>
<b>KARSAN</b>	0	0	0	0	0	0	2	0	40	1	382	3	0	0	0	0	<b>424</b>
<b>M. BENZ TÜRK</b>	0	0	0	0	7.547	74	0	0	1.448	51	0	0	0	0	0	0	<b>8.995</b>
<b>MAN TÜRKİYE</b>	0	0	0	0	0	0	0	0	457	16	0	0	0	0	0	0	<b>457</b>
<b>OTOKAR</b>	0	0	179	13	0	0	121	0	178	6	11	0	1.067	40	0	0	<b>1.556</b>
<b>OYAK RENAULT</b>	126.892	44	0	0	0	0	0	0	0	0	0	0	0	0	0	0	<b>126.892</b>
<b>TEMSA GLOBAL</b>	0	0	0	0	0	0	0	0	670	24	0	0	734	28	0	0	<b>1.404</b>
<b>TOFAŞ</b>	22.747	8	0	0	0	0	63.888	47	0	0	0	0	0	0	0	0	<b>86.635</b>
<b>TOYOTA</b>	56.948	20	0	0	0	0	0	0	0	0	0	0	0	0	0	0	<b>56.948</b>
<b>TÜRK TRAKTÖR</b>	0	0	0	0	0	0	0	0	0	0	0	0	0	0	19.072	94	<b>19.072</b>
<b>TOPLAM</b>	<b>291.469</b>	<b>100</b>	<b>1.392</b>	<b>100</b>	<b>10.184</b>	<b>100</b>	<b>135.183</b>	<b>100</b>	<b>2.830</b>	<b>100</b>	<b>12.258</b>	<b>100</b>	<b>2.664</b>	<b>100</b>	<b>20.250</b>	<b>100</b>	<b>476.230</b>

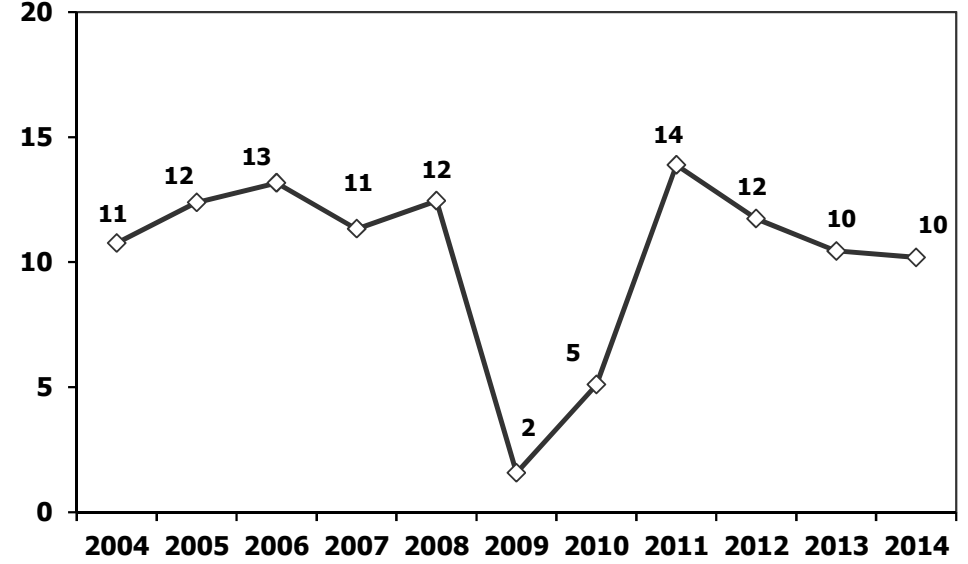
## Mayıs Ayı Üretimi (May Production)

FİRMALAR	OTOMOBİL	%	K.KAMYON	%	B.KAMYON	%	KAMYONET	%	OTOBÜS	%	MİNİBÜS	%	MİDİBÜS	%	TRAKTÖR	%	TOPLAM
<b>A.I.O.S.</b>	0	0	198	14	0	0	240	0	2	0	0	0	178	7	0	0	<b>618</b>
<b>FORD OTOSAN</b>	0	0	0	0	660	6	19.270	14	0	0	3.100	25	0	0	0	0	<b>23.030</b>
<b>HATTAT TARIM</b>	0	0	0	0	0	0	0	0	0	0	0	0	0	0	256	1	<b>256</b>
<b>HONDA TÜRKİYE</b>	1.195	0	0	0	0	0	0	0	0	0	0	0	0	0	0	0	<b>1.195</b>
<b>HYUNDAI ASSAN</b>	19.200	7	0	0	0	0	0	0	0	0	0	0	0	0	0	0	<b>19.200</b>
<b>KARSAN</b>	0	0	0	0	0	0	2	0	0	0	80	1	0	0	0	0	<b>82</b>
<b>M. BENZ TÜRK</b>	0	0	0	0	1.676	16	0	0	347	12	0	0	0	0	0	0	<b>2.023</b>
<b>MAN TÜRKİYE</b>	0	0	0	0	0	0	0	0	63	2	0	0	0	0	0	0	<b>63</b>
<b>OTOKAR</b>	0	0	80	6	0	0	40	0	64	2	10	0	146	5	0	0	<b>340</b>
<b>OYAK RENAULT</b>	25.995	9	0	0	0	0	0	0	0	0	0	0	0	0	0	0	<b>25.995</b>
<b>TEMSA GLOBAL</b>	0	0	0	0	0	0	0	0	85	3	0	0	130	5	0	0	<b>215</b>
<b>TOFAŞ</b>	5.116	2	0	0	0	0	12.657	9	0	0	0	0	0	0	0	0	<b>17.773</b>
<b>TOYOTA</b>	10.964	4	0	0	0	0	0	0	0	0	0	0	0	0	0	0	<b>10.964</b>
<b>TÜRK TRAKTÖR</b>	0	0	0	0	0	0	0	0	0	0	0	0	0	0	3.894	19	<b>3.894</b>
<b>TOPLAM</b>	<b>62.470</b>	<b>21</b>	<b>278</b>	<b>20</b>	<b>2.336</b>	<b>23</b>	<b>32.209</b>	<b>24</b>	<b>561</b>	<b>20</b>	<b>3.190</b>	<b>26</b>	<b>454</b>	<b>17</b>	<b>4.150</b>	<b>20</b>	<b>105.648</b>

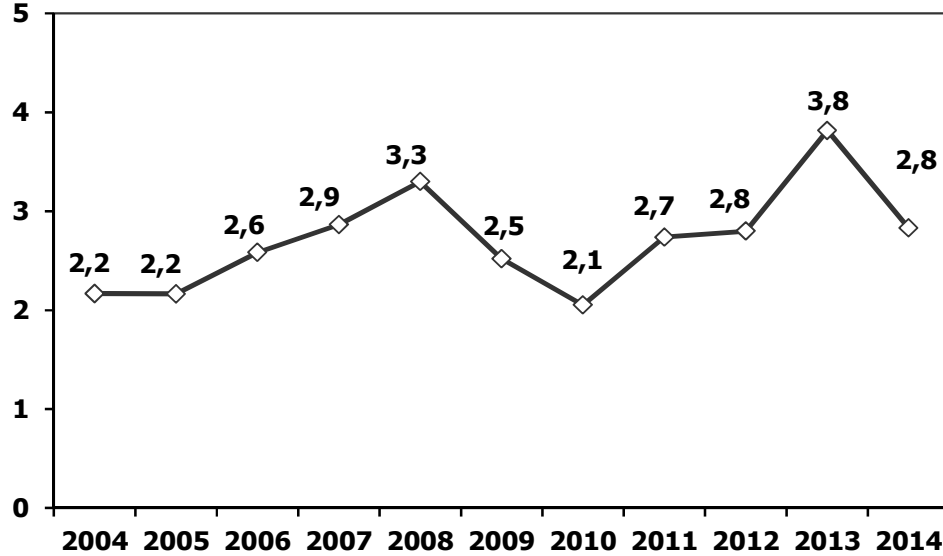
**Ticari Araç Üretimi** (x1000) (Ocak-Mayıs)  
Commercial Vehicle Production (x1000) (January- May)



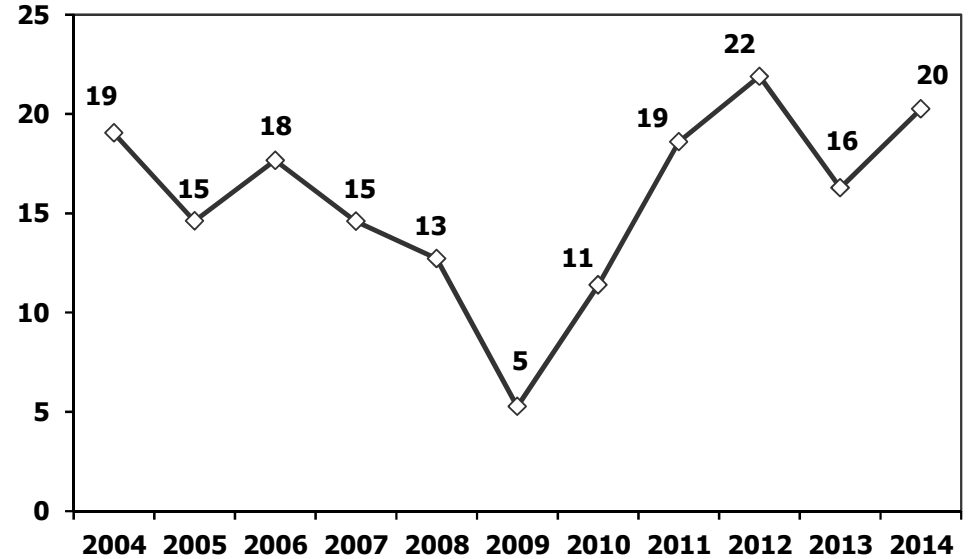
(AYA >12 Ton) **Büyük Kamyon Üretimi** (x1000) (Ocak-Mayıs)  
(GVW >12 Ton) Heavy Truck Production (x1000) (January- May)



**Otobüs Üretimi** (x1000) (Ocak-Mayıs)  
Bus Production (x1000) (January- May)

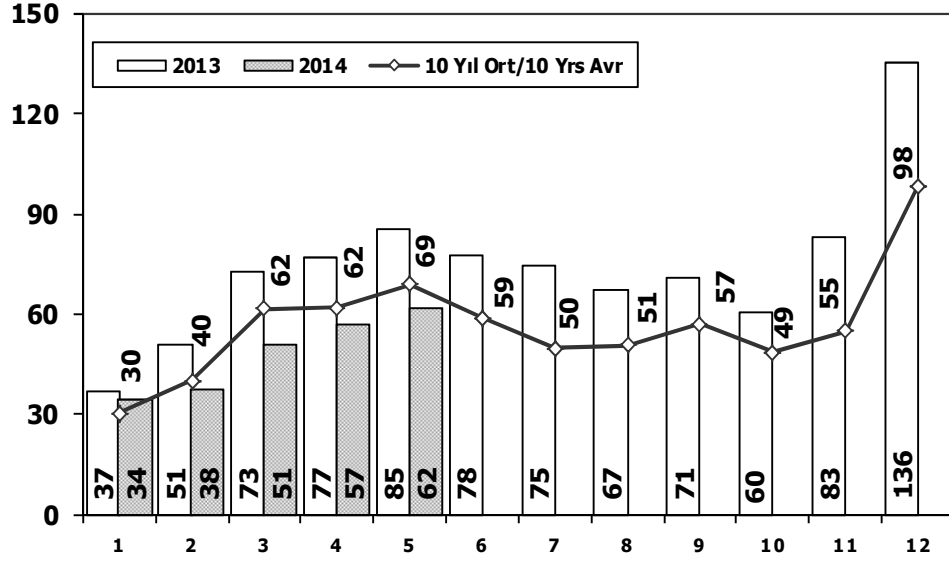


**Traktör Üretimi** (x1000) (Ocak-Mayıs)  
F. Tractor Production (x1000) (January- May)



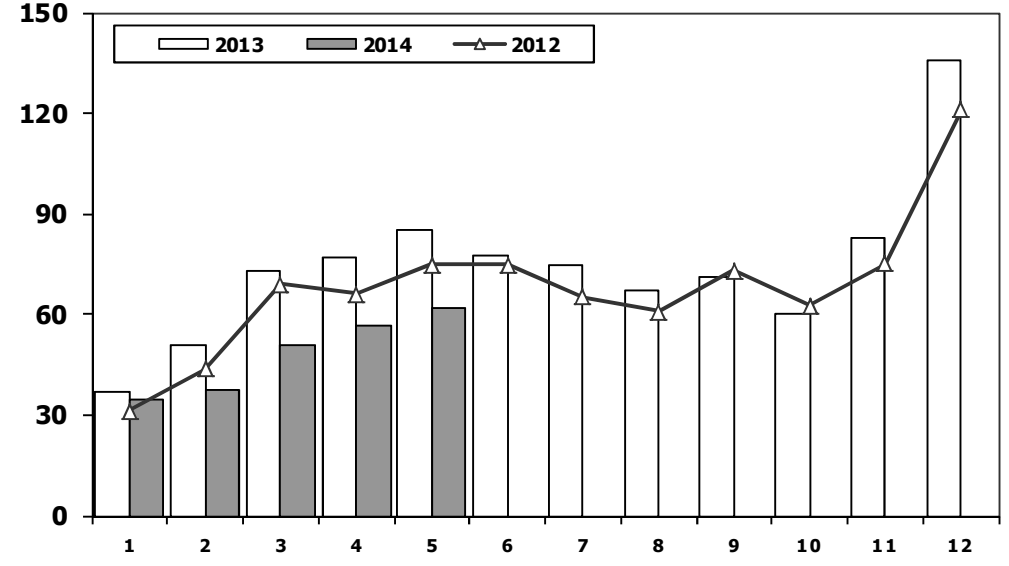
## Toplam Pazarın Analizi (x1000)

### Total Market Analysis (x1000)



## Toplam Pazar (x1000)

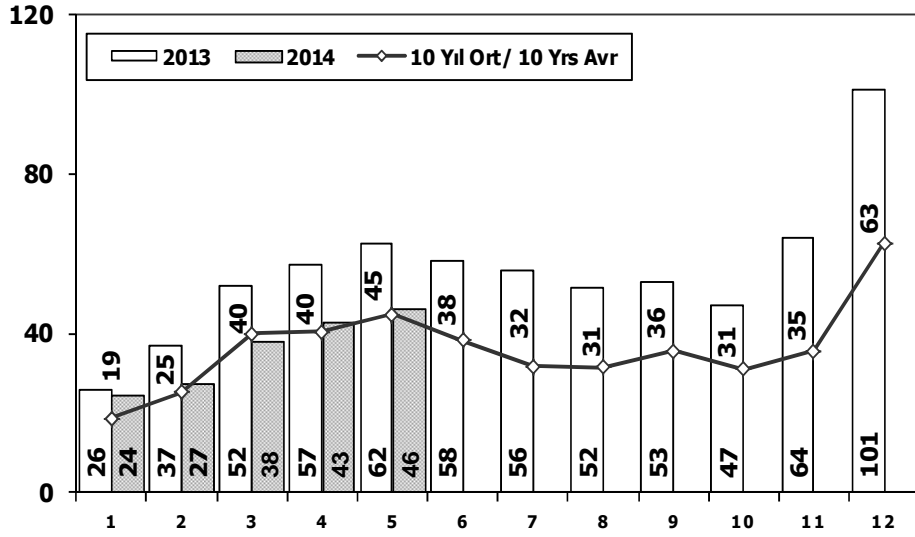
### Total Market (x1000)



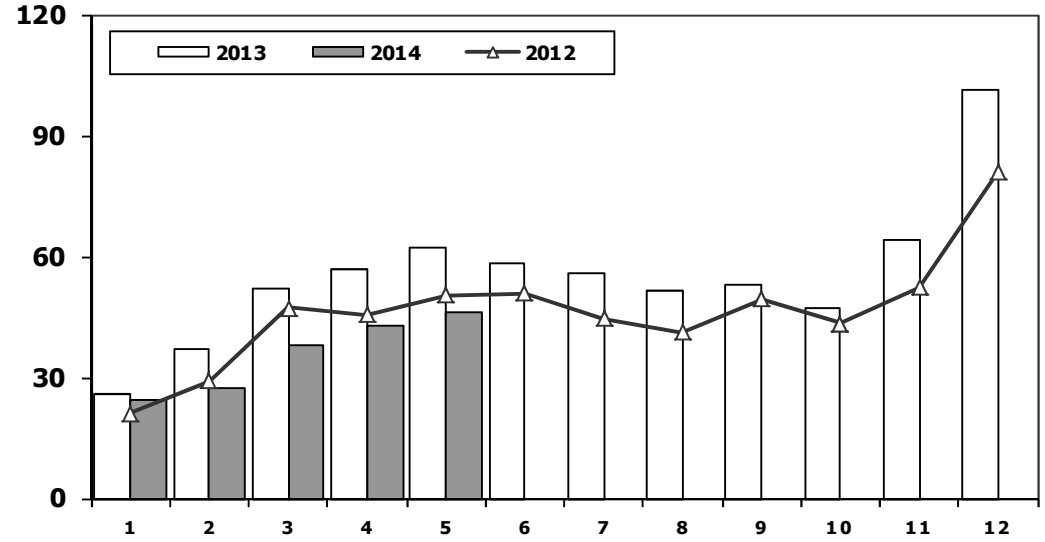
Aylar / Months	10 Yil Ort. 10 Yrs Avr. (x1000)	2014 (x1000)	%
1	30,3	34,3	13,2
2	40,3	37,5	-6,8
3	61,8	50,8	-17,8
4	62,0	56,7	-8,4
5	69,1	61,9	-10,5
<b>Total</b>	<b>263,5</b>	<b>241,3</b>	<b>-8,4</b>

	1	2	3	4	5	6	7	8	9	10	11	12	5 Ay/Mo	Total
2004	38.621	39.389	71.723	77.056	84.634	63.228	57.307	56.422	59.429	56.153	52.237	85.070	311.423	741.269
2005	22.687	38.291	64.502	60.873	71.383	64.379	63.847	68.647	66.580	60.791	65.719	110.838	257.736	758.537
2006	29.969	44.646	65.090	68.853	83.289	58.203	40.037	47.374	49.629	39.805	55.898	82.722	291.847	665.515
2007	24.950	31.702	45.488	45.633	51.255	51.661	50.117	54.171	50.078	56.058	67.017	106.076	199.028	634.206
2008	33.792	38.121	56.814	50.967	51.627	49.393	44.692	46.592	46.829	35.147	28.152	44.418	231.321	526.544
2009	20.631	22.846	56.531	54.426	64.887	63.102	30.246	37.092	83.403	22.117	29.202	91.386	219.321	575.869
2010	21.050	32.313	53.828	57.079	61.628	63.390	63.718	64.645	66.601	76.780	77.406	154.734	225.898	793.172
2011	47.658	62.348	83.333	82.071	85.093	85.863	65.364	61.378	63.643	72.640	67.195	134.281	<b>360.503</b>	<b>910.867</b>
2012	31.219	43.827	68.957	66.014	74.820	74.781	65.122	60.848	73.197	62.677	75.045	121.113	284.837	817.620
2013	37.140	50.931	72.688	77.015	<b>85.421</b>	77.771	74.726	67.383	71.037	60.399	83.017	135.596	323.195	893.124
2014	34.338	37.519	50.781	56.746	61.866	0	0	0	0	0	0	0	241.250	241.250

## Otomobil Pazarının Analizi (x1000) P.Cars Market Analysis (x1000)



## Otomobil Pazarı (x1000) P.Cars Market (x1000)

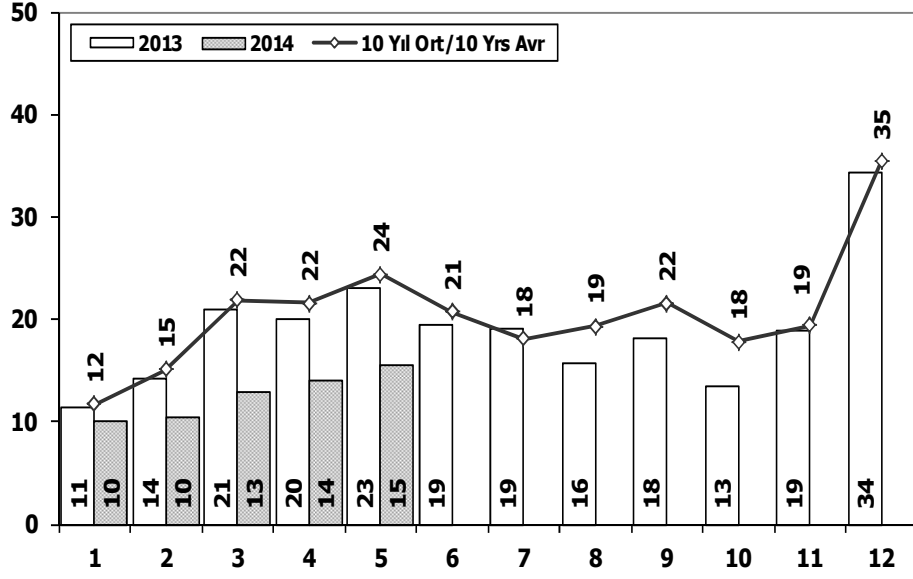


Aylar / Months	10 Yil Ort. 10 Yrs Avr. (x1000)	2014 (x1000)	%
1	18,7	24,4	30,5
2	25,2	27,2	7,9
3	39,9	37,8	-5,3
4	40,4	42,8	5,9
5	44,8	46,2	3,2
<b>Total</b>	<b>168,9</b>	<b>178,3</b>	<b>5,6</b>

	1	2	3	4	5	6	7	8	9	10	11	12	5 Ay/Mo	Total
2004	25.625	23.695	46.075	47.995	54.610	37.671	33.410	33.709	33.383	34.292	30.547	50.197	198.000	451.209
2005	11.595	21.012	38.129	36.206	38.480	40.900	38.969	38.648	36.410	34.960	37.841	65.447	145.422	438.597
2006	16.506	24.929	36.996	40.177	48.521	32.982	22.653	24.873	27.517	21.237	30.477	46.351	167.129	373.219
2007	13.186	17.212	24.336	25.204	29.067	30.126	28.246	28.469	27.662	32.569	39.643	61.745	109.005	357.465
2008	18.588	21.196	34.147	30.313	31.477	28.724	25.530	26.102	27.053	19.788	17.201	25.879	135.721	305.998
2009	13.173	14.492	40.622	36.202	44.188	41.019	16.637	22.537	52.162	13.828	17.781	57.178	148.677	369.819
2010	12.594	20.651	33.958	36.549	40.467	42.086	41.399	42.222	42.477	47.859	50.061	99.461	144.219	509.784
2011	29.868	39.004	54.023	53.835	56.302	56.714	43.518	38.875	39.964	47.508	44.951	88.957	233.032	593.519
2012	21.077	29.189	47.270	45.645	50.460	50.849	44.531	41.236	49.360	43.440	52.297	80.926	193.641	556.280
2013	25.835	36.814	51.785	56.999	<b>62.383</b>	58.290	55.712	51.611	52.925	46.985	64.117	101.199	<b>233.816</b>	<b>664.655</b>
2014	24.368	27.167	37.812	42.769	46.379	0	0	0	0	0	0	0	178.495	178.495

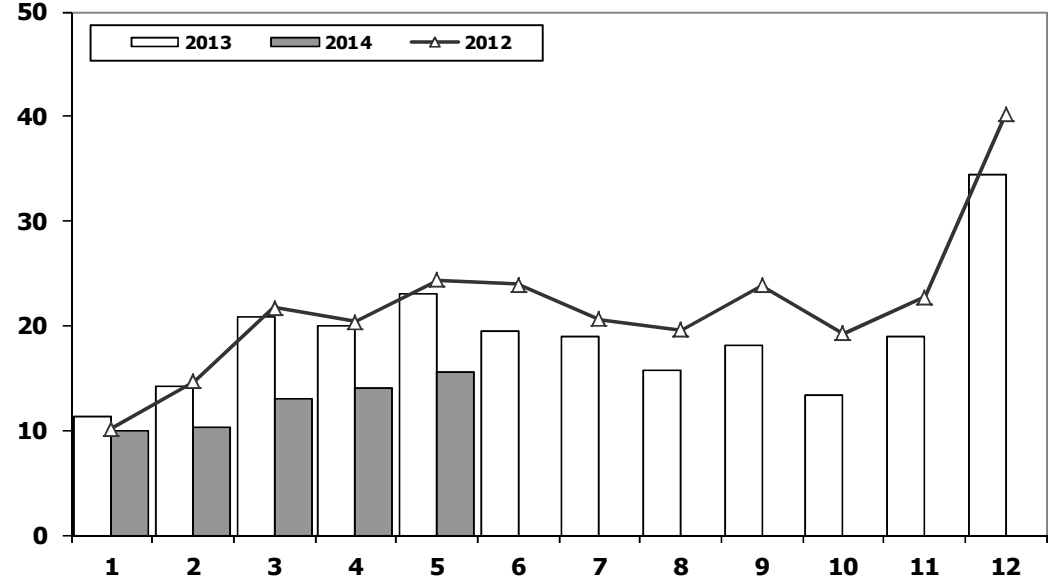
## Ticari Araç Pazarının Analizi (x1000)

### CV Market Analysis (x1000)



## Ticari Araç Pazarı (x1000)

### CV Total Market (Local + Imports) (x1000)

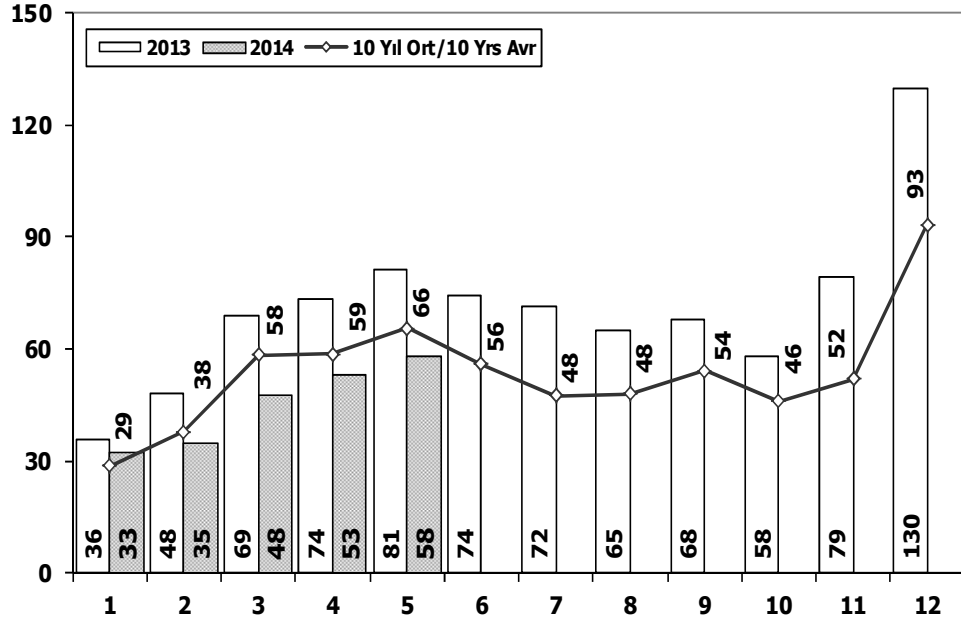


Aylar / Months	10 Yil Ort. 10 Yrs Avr. (x1000)	2014 (x1000)	%
1	11,7	10,0	-14,5
2	15,1	10,4	-31,4
3	21,9	13,0	-40,8
4	21,6	14,0	-35,2
5	24,4	15,5	-36,4
<b>Total</b>	<b>94,6</b>	<b>62,8</b>	<b>-33,6</b>

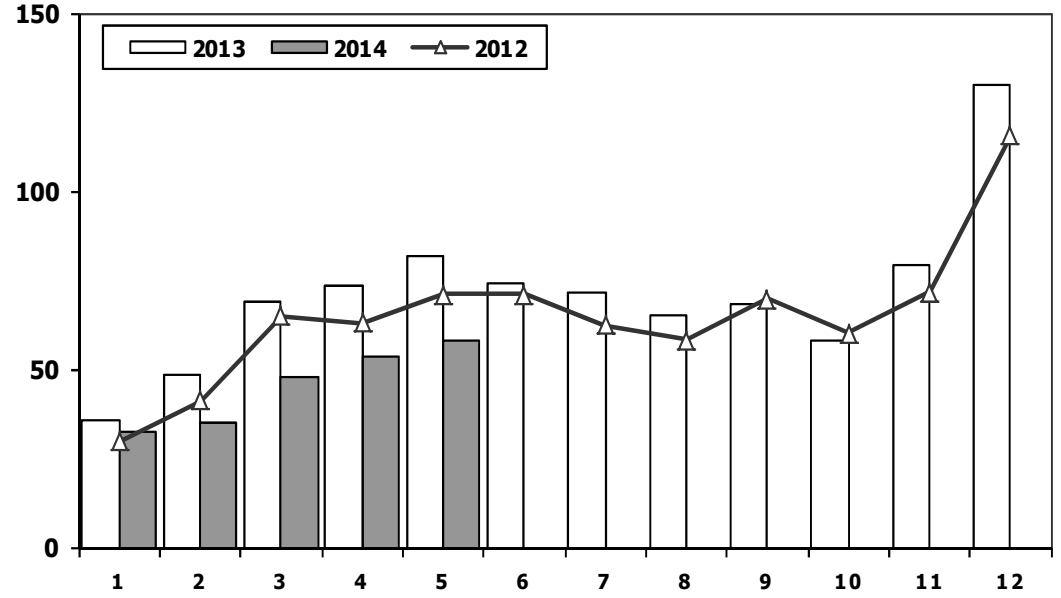
	1	2	3	4	5	6	7	8	9	10	11	12	5 Ay/Mo	Total
2004	12.996	15.694	25.648	29.061	30.024	25.557	23.897	22.713	26.046	21.861	21.690	34.873	113.423	290.060
2005	11.092	17.279	26.373	24.667	32.903	23.479	24.878	29.999	30.170	25.831	27.878	45.391	112.314	319.940
2006	13.463	19.717	28.094	28.676	34.768	25.221	17.384	22.501	22.112	18.568	25.421	36.371	124.718	292.296
2007	11.764	14.490	21.152	20.429	22.188	21.535	21.871	25.702	22.416	23.489	27.374	44.331	90.023	276.741
2008	15.204	16.925	22.667	20.654	20.150	20.669	19.162	20.490	19.776	15.359	10.951	18.539	95.600	220.546
2009	7.458	8.354	15.909	18.224	20.699	22.083	13.609	14.555	31.241	8.289	11.421	34.208	70.644	206.050
2010	8.456	11.662	19.870	20.530	21.161	21.304	22.319	22.423	24.124	28.921	27.345	55.273	81.679	283.388
2011	17.790	23.344	29.310	28.236	28.791	29.149	21.846	22.503	23.679	25.132	22.244	45.324	127.471	317.348
2012	10.142	14.638	21.687	20.369	24.360	23.932	20.591	19.612	23.837	19.237	22.748	40.187	91.196	261.340
2013	11.305	14.117	20.903	20.016	23.038	19.481	19.014	15.772	18.112	13.414	18.900	34.397	89.379	228.469
2014	9.970	10.352	12.969	13.977	15.487	0	0	0	0	0	0	0	62.755	62.755



**Hafif Araç Pazarının Analizi (x1000)**  
LV Market Analysis (x1000)



**Hafif Araç Pazarı (x1000)**  
LV Total Market (Local + Imports) (x1000)

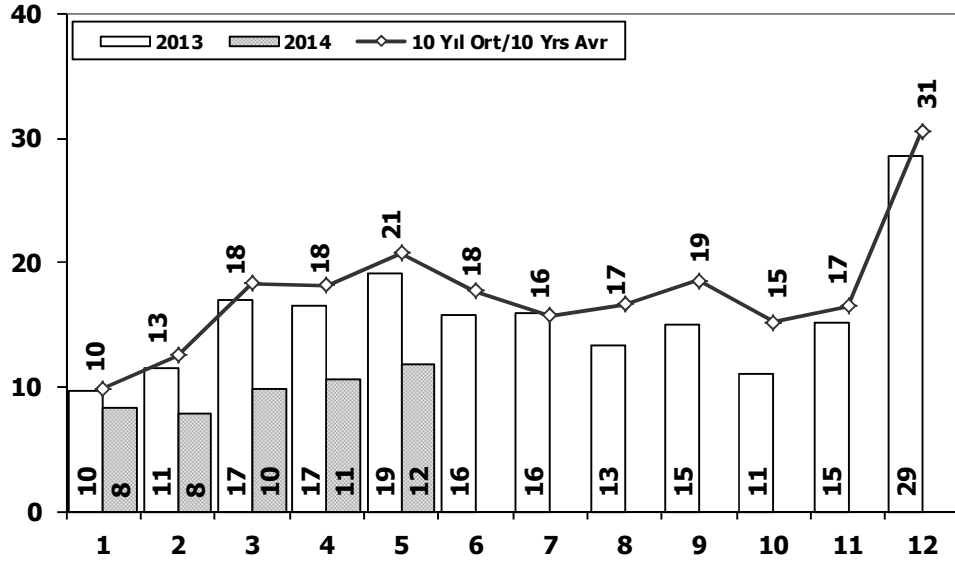


Aylar / Months	10 Yil Ort. 10 Yrs Avr. (x1000)	2014 (x1000)	%
1	28,6	32,7	14,4
2	37,7	35,0	-7,2
3	58,3	47,6	-18,4
4	58,6	53,3	-9,0
5	65,6	58,1	-11,4
<b>Total</b>	<b>248,8</b>	<b>226,7</b>	<b>-8,9</b>

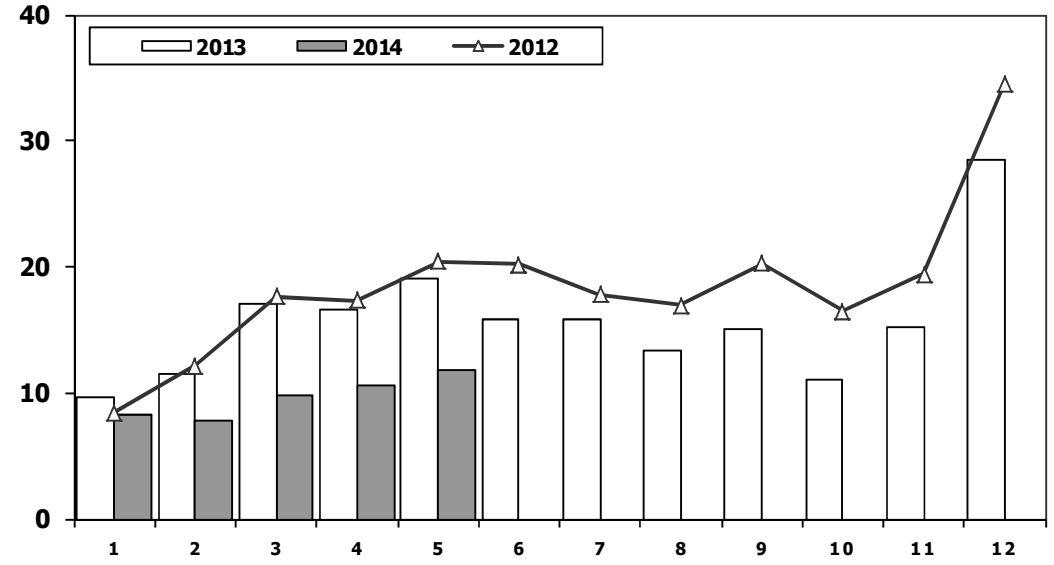
	1	2	3	4	5	6	7	8	9	10	11	12	5 Ay/Mo	Total
2004	36.352	37.079	67.144	73.075	80.290	59.730	54.816	52.876	55.609	53.000	49.200	78.924	293.940	698.095
2005	20.747	35.766	60.707	56.844	67.357	60.796	61.015	64.011	61.954	56.638	61.364	103.209	241.421	710.408
2006	27.917	40.938	60.052	64.038	78.229	54.355	37.251	43.767	46.109	36.542	51.867	76.787	271.174	617.852
2007	23.117	29.184	41.890	42.366	47.938	48.674	47.490	50.558	46.581	52.725	63.313	100.926	184.495	594.762
2008	31.527	35.251	53.649	47.701	48.598	46.324	42.156	43.670	43.932	32.884	26.253	42.078	216.726	494.023
2009	19.606	21.742	55.111	52.640	63.191	61.067	28.845	35.609	81.397	21.033	27.962	88.923	212.290	557.126
2010	20.095	31.172	51.769	54.946	59.377	60.896	61.345	61.764	63.814	73.404	73.962	148.369	217.359	760.913
2011	44.892	58.663	78.403	77.695	80.646	81.573	63.044	58.406	60.129	69.421	63.657	127.910	<b>340.299</b>	<b>864.439</b>
2012	29.545	41.324	64.884	62.949	70.863	71.067	62.304	58.148	69.629	59.938	71.710	115.400	269.565	777.761
2013	35.523	48.307	68.774	73.575	<b>81.468</b>	74.096	71.596	65.043	67.963	58.014	79.301	129.718	307.647	853.378
2014	32.670	35.021	47.581	53.305	58.121	0	0	0	0	0	0	0	226.698	226.698



## Hafif Ticari Araç Pazarının Analizi (x1000) LCV Market Analysis (x1000)



## Hafif Ticari Araç Pazarı (x1000) LCV Total Market (Local + Imports) (x1000)



Aylar / Months	10 Yil Ort. 10 Yrs Avr. (x1000)	2013 (x1000)	%
1	9,9	8,3	-16,0
2	12,6	7,9	-37,5
3	18,4	9,8	-46,8
4	18,2	10,5	-42,2
5	20,8	11,7	-43,6
<b>Total</b>	<b>79,9</b>	<b>48,2</b>	<b>-39,6</b>

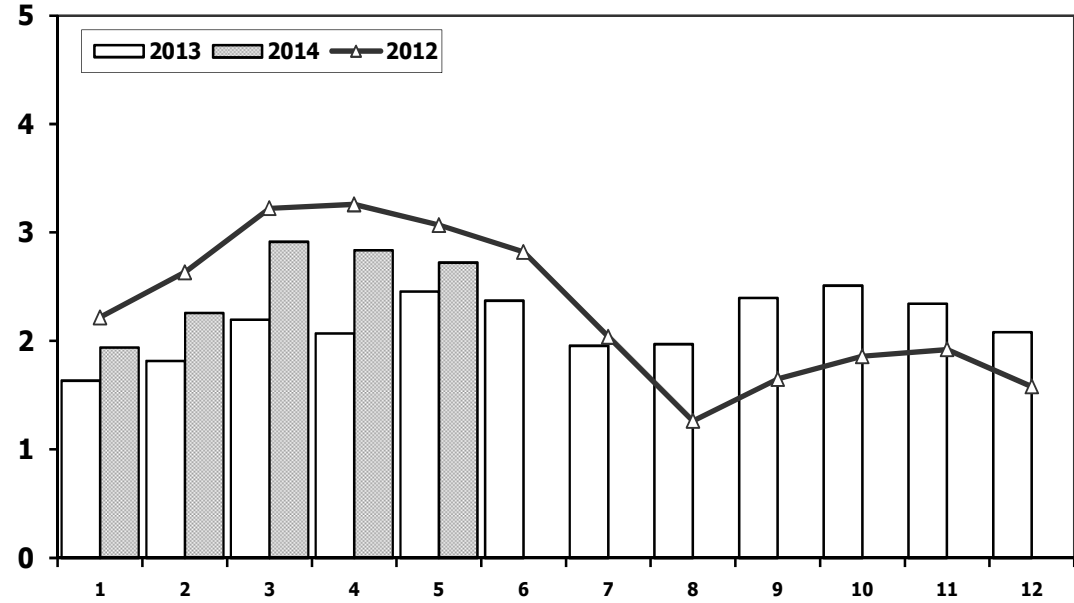
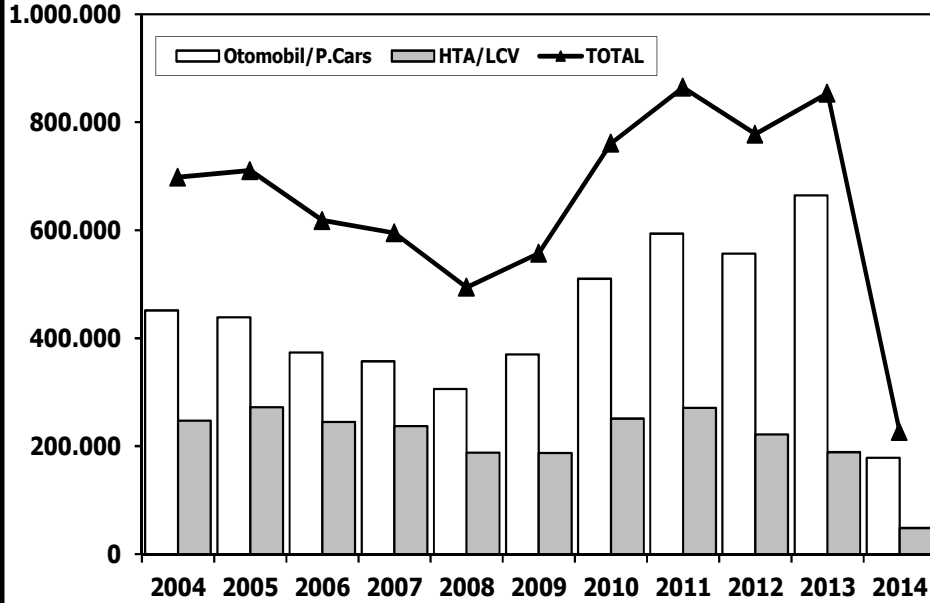
	1	2	3	4	5	6	7	8	9	10	11	12	5 Ay/Mo	Total
2004	10.727	13.384	21.069	25.080	25.680	22.059	21.406	19.167	22.226	18.708	18.653	28.727	95.940	246.886
2005	9.152	14.754	22.578	20.638	28.877	19.896	22.046	25.363	25.544	21.678	23.523	37.762	95.999	271.811
2006	11.411	16.009	23.056	23.861	29.708	21.373	14.598	18.894	18.592	15.305	21.390	30.436	104.045	244.633
2007	9.931	11.972	17.554	17.162	18.871	18.548	19.244	22.089	18.919	20.156	23.670	39.181	75.490	237.297
2008	12.939	14.055	19.502	17.388	17.121	17.600	16.626	17.568	16.879	13.096	9.052	16.199	81.005	188.025
2009	6.433	7.250	14.489	16.438	19.003	20.048	12.208	13.072	29.235	7.205	10.181	31.745	63.613	187.307
2010	7.501	10.521	17.811	18.397	18.910	18.810	19.946	19.542	21.337	25.545	23.901	48.908	73.140	251.129
2011	15.024	19.659	24.380	23.860	24.344	24.859	19.526	19.531	20.165	21.913	18.706	38.953	107.267	270.920
2012	8.468	12.135	17.614	17.304	20.403	20.218	17.773	16.912	20.269	16.498	19.413	34.474	75.924	221.481
2013	9.688	11.493	16.989	16.576	19.085	15.806	15.884	13.432	15.038	11.029	15.184	28.519	73.831	188.723
2014	8.302	7.854	9.769	10.536	11.742	0	0	0	0	0	0	0	48.203	48.203

## Hafif Arac Pazarı (AYA < 3.5 Ton)

### Light Vehicle Market (GVW < 3.5 Ton)

## Traktör Pazarı (x1000)

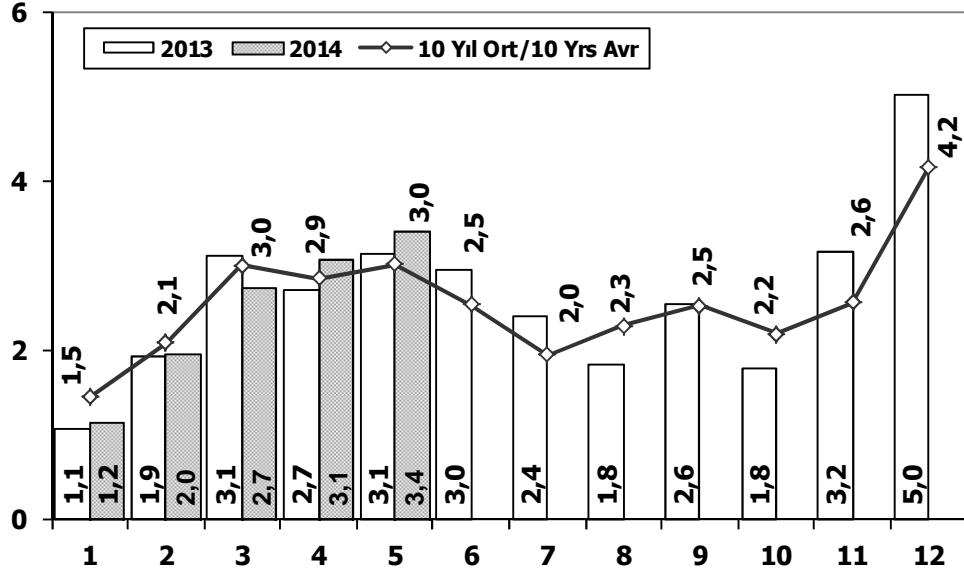
### F.Tractor Market (x1000)



	2004	2005	2006	2007	2008	2009	2010	2011	2012	2013	2014
Otomobil/P.Cars	451.209	438.597	373.219	357.465	305.998	369.819	509.784	593.519	556.280	<b>664.655</b>	178.495
HTA /LCV	246.886	<b>271.811</b>	244.633	237.297	188.025	187.307	251.129	270.920	221.481	188.723	48.203
<b>TOTAL</b>	698.095	710.408	617.852	594.762	494.023	557.126	760.913	<b>864.439</b>	777.761	853.378	226.698
HTA /LCV (%)	35	38	40	<b>40</b>	38	34	33	31	28	22	21

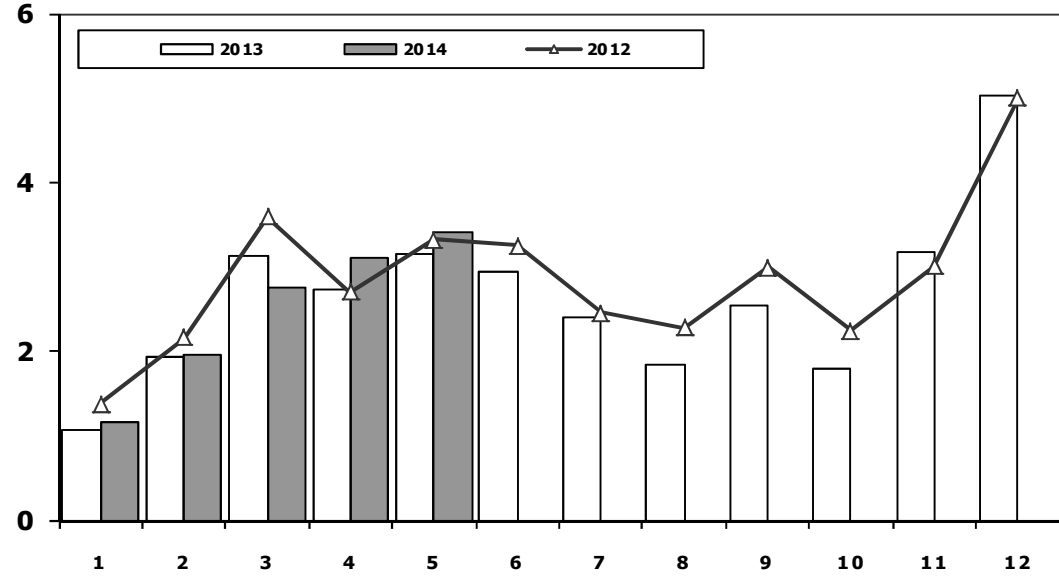
	1	2	3	4	5	6	7	8	9	10	11	12	5 Ay/Mo	Total
<b>2004</b>	1.946	1.874	2.909	3.260	2.863	2.816	1.988	2.209	2.509	1.989	2.198	1.364	12.852	27.925
<b>2005</b>	1.026	1.636	2.001	2.599	2.569	2.780	2.148	2.819	2.567	2.477	2.297	2.089	9.831	27.008
<b>2006</b>	1.578	2.493	2.746	2.841	3.561	2.356	1.685	2.177	2.756	1.915	2.353	1.925	13.219	28.386
<b>2007</b>	1.812	1.778	2.063	2.107	2.266	1.853	1.653	2.065	2.372	2.239	2.231	1.602	10.026	24.041
<b>2008</b>	1.510	1.427	1.933	1.692	1.689	1.592	1.275	924	904	609	707	359	8.251	14.621
<b>2009</b>	267	344	388	638	759	828	741	534	586	765	725	715	2.396	7.290
<b>2010</b>	714	903	1.432	1.653	1.736	1.673	1.613	1.527	2.351	2.787	2.656	2.345	6.438	21.390
<b>2011</b>	2.458	2.610	3.105	3.403	<b>3.847</b>	3.599	2.952	1.559	2.957	2.823	2.603	2.807	<b>15.423</b>	<b>34.723</b>
<b>2012</b>	2.216	2.632	3.223	3.259	3.067	2.821	2.037	1.262	1.648	1.858	1.921	1.579	14.397	27.523
<b>2013</b>	1.633	1.817	2.196	2.070	2.455	2.370	1.955	1.969	2.396	2.510	2.343	2.080	10.171	25.794
<b>2014</b>	1.941	2.256	2.915	2.837	2.723	0	0	0	0	0	0	0	12.672	12.672

## Kamyon Pazarının Analizi (x1000) AYA > 5 Ton Truck Market Analysis (x1000) GVW > 5 Ton



Aylar / Months	10 Yil Ort. 10 Yrs Avr. (x1000)	2014 (x100)	%
1	1,5	1,2	-19,8
2	2,1	2,0	-6,0
3	3,0	2,7	-8,8
4	2,9	3,1	8,2
5	3,0	3,4	12,8
<b>Total</b>	<b>12,4</b>	<b>12,4</b>	<b>-0,5</b>

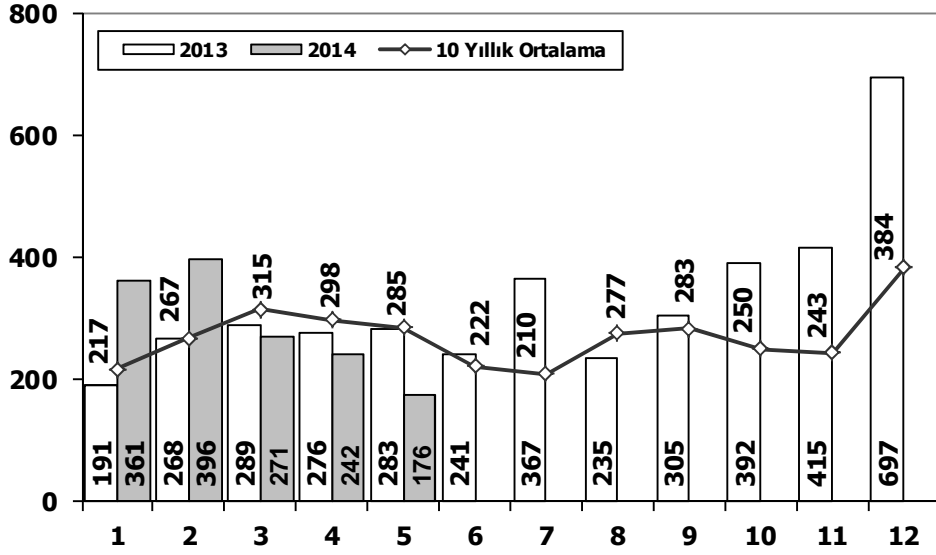
## Kamyon Pazarı (x1000) AYA > 5 Ton Truck Market (x1000) GVW > 5 Ton



	1	2	3	4	5	6	7	8	9	10	11	12	5 Ay/Mo	Total
2004	1.863	1.949	3.983	3.352	3.651	3.118	2.234	2.897	3.285	2.727	2.629	5.517	14.798	37.205
2005	1.693	2.186	3.288	3.484	3.413	3.147	2.504	4.028	4.043	3.708	3.918	6.570	14.064	41.982
2006	1.767	3.310	4.467	4.180	<b>4.449</b>	3.398	2.472	3.142	3.052	2.926	3.550	5.358	<b>18.173</b>	<b>42.071</b>
2007	1.554	2.055	3.065	2.940	2.865	2.613	2.372	3.145	2.988	2.886	3.258	4.444	12.479	34.185
2008	1.797	2.309	2.621	2.578	2.459	2.526	2.067	2.377	2.390	1.790	1.512	1.834	11.764	26.260
2009	771	759	1.034	1.342	1.355	1.651	1.156	1.205	1.780	866	981	2.015	5.261	14.915
2010	777	968	1.772	1.807	1.966	2.205	2.093	2.446	2.444	3.071	3.136	5.677	7.290	28.362
2011	2.552	3.292	4.418	3.754	3.803	3.749	1.996	2.478	3.081	2.774	3.108	5.787	17.819	40.792
2012	1.375	2.159	3.595	2.697	3.321	3.250	2.450	2.277	2.991	2.244	3.006	5.000	13.147	34.365
2013	1.077	1.931	3.127	2.720	3.145	2.951	2.411	1.845	2.554	1.801	3.173	5.025	12.000	31.760
2014	1.165	1.968	2.749	3.094	3.405	0	0	0	0	0	0	0	12.381	12.381

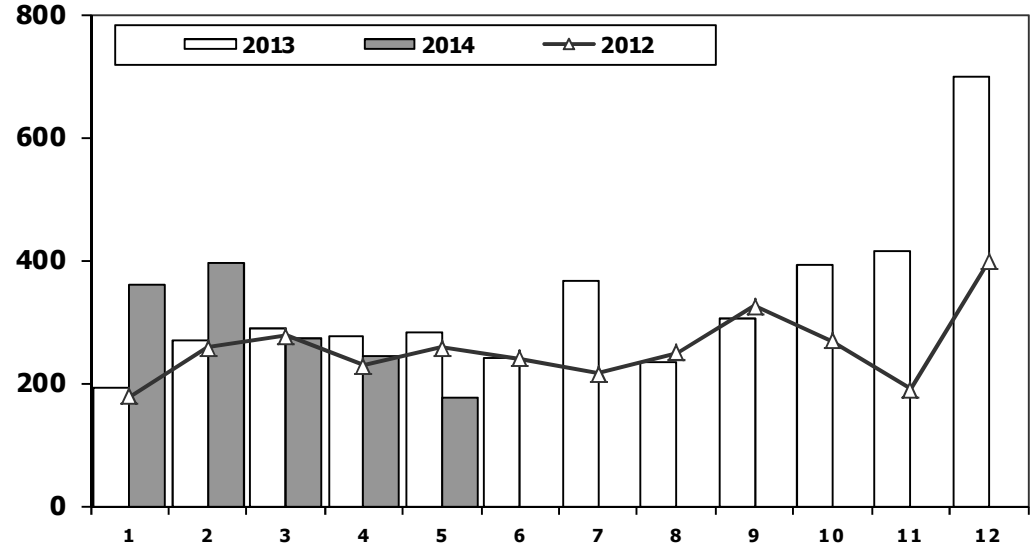
## Midibüs Pazarının Analizi (7-9 mt / 25-35 Kişilik)

### Midibus Market Analysis (7-9 mt / 25-35 Passengers)



## Midibüs Pazarı (7-9 mt / 25-35 Kişilik Midibüs)

### Midibus Market (7-9 mt / 25-35 Passengers)



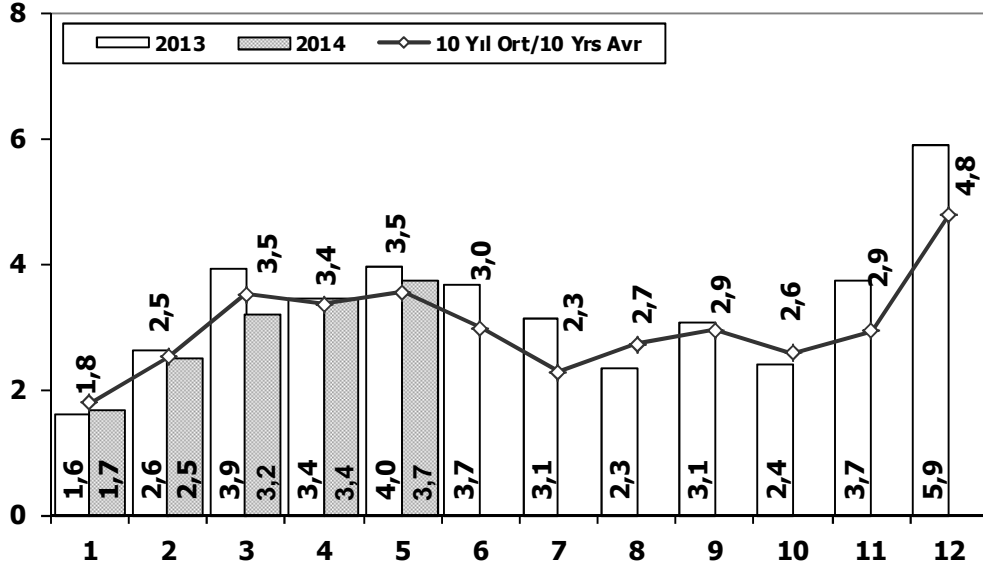
Aylar / Months	10 Yıl Ort. 10 Yrs Avr.	2014	%
1	217	361	67
2	267	396	48
3	315	271	-14
4	298	242	-19
5	285	176	-38
<b>Total</b>	<b>1.383</b>	<b>1.446</b>	<b>5</b>

	1	2	3	4	5	6	7	8	9	10	11	12	5 Ay/Mo	Total
2004	233	226	381	431	524	237	154	531	445	331	319	551	1.795	4.363
2005	182	258	432	393	439	269	252	459	436	329	328	574	1.704	4.351
2006	207	297	406	388	381	266	230	353	322	253	305	401	1.679	3.809
2007	207	272	404	238	302	283	164	365	399	279	283	465	1.423	3.661
2008	391	476	436	512	419	331	368	380	341	352	246	270	2.234	4.522
2009	154	124	160	220	174	198	160	175	168	143	206	323	832	2.205
2010	155	131	185	167	140	138	129	246	236	206	202	437	778	2.372
2011	138	195	294	316	280	258	211	305	301	276	260	270	1.223	3.104
2012	179	257	277	229	257	239	216	249	325	269	189	398	1.199	3.084
2013	191	268	289	276	283	241	367	235	305	392	415	697	1.307	3.959
2014	361	396	271	242	176	0	0	0	0	0	0	0	1.446	1.446



## Ağır Ticari Araç Pazarının Analizi (x1000)

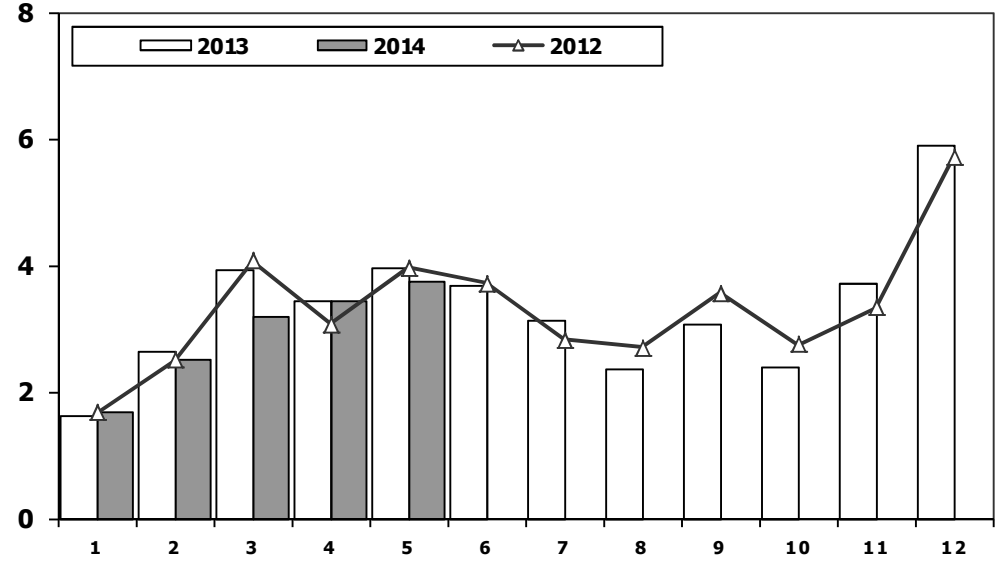
### HCV Market Analysis (x1000)



Aylar / Months	10 Yıl Ort. 10 Yrs Avr. (x1000)	2013 (x1000)	%
1	1,8	1,7	-6,3
2	2,5	2,5	-0,8
3	3,5	3,2	-9,1
4	3,4	3,4	2,4
5	3,5	3,7	5,5
<b>Total</b>	<b>14,7</b>	<b>14,6</b>	<b>-1,2</b>

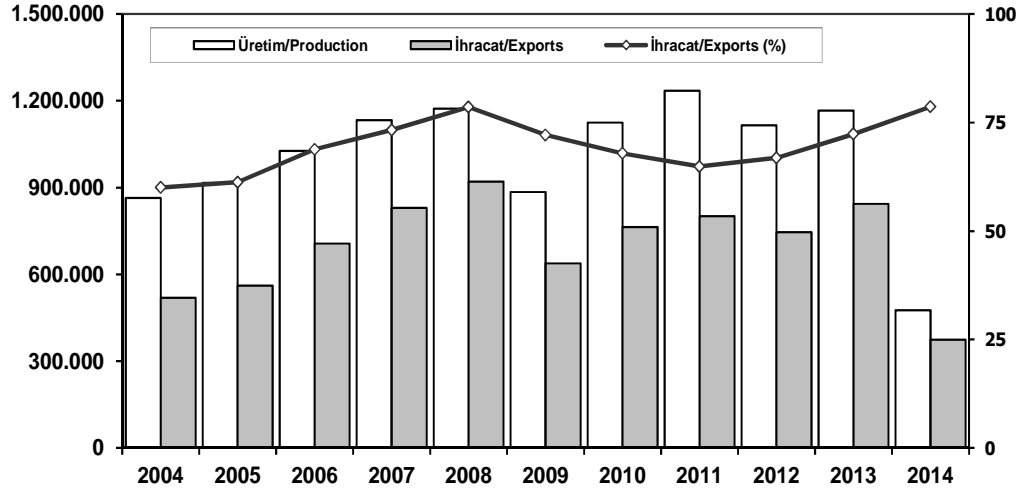
## Ağır Ticari Araç Pazarı (x1000)

### HCV Market (x1000)



	1	2	3	4	5	6	7	8	9	10	11	12	5 Ay/Mo	Total
2004	2.269	2.310	4.579	3.981	4.344	3.498	2.491	3.546	3.820	3.153	3.037	6.146	17.483	43.174
2005	1.940	2.525	3.795	4.029	4.026	3.583	2.832	4.636	4.626	4.153	4.355	7.629	16.315	48.129
2006	2.052	3.708	5.038	4.815	5.060	3.848	2.786	3.607	3.520	3.263	4.031	5.935	20.673	47.663
2007	1.833	2.518	3.598	3.267	3.317	2.987	2.627	3.613	3.497	3.333	3.704	5.150	14.533	39.444
2008	2.265	2.870	3.165	3.266	3.029	3.069	2.536	2.922	2.897	2.263	1.899	2.340	14.595	32.521
2009	1.025	1.104	1.420	1.786	1.696	2.035	1.401	1.483	2.006	1.084	1.240	2.463	7.031	18.743
2010	955	1.141	2.059	2.133	2.251	2.494	2.373	2.881	2.787	3.376	3.444	6.365	8.539	32.259
2011	2.766	3.685	4.930	4.376	4.447	4.290	2.320	2.972	3.514	3.219	3.538	6.371	20.204	46.428
2012	1.674	2.503	4.073	3.065	3.957	3.714	2.818	2.700	3.568	2.739	3.335	5.713	15.272	39.859
2013	1.617	2.624	3.914	3.440	3.953	3.675	3.130	2.340	3.074	2.385	3.716	5.878	15.548	39.746
2014	1.668	2.498	3.200	3.441	3.745	0	0	0	0	0	0	0	14.552	14.552

## İhracat/Üretim (2004-2014) Exports/Production (2004-2014)



## Taşıt Araçları İhracatı Motor Vehicle Exports

SEKTÖR/SECTOR	2012	2013	2013		2014/2013 (%)
			5 Ay - 5 Mo	2014	
OTOMOBİL/ P.Cars	412.991	484.504	195.581	242.696	24
TİCARİ ARAÇLAR / CV	316.932	343.967	155.135	125.154	-19
* Kamyonet/Pick-Up	292.601	300.765	138.251	113.635	-18
* Minibüs/Minibus	16.429	34.664	14.502	9.051	-38
* Kamyon/Truck	2.682	3.055	524	474	-10
* Midibüs/Midibus	1.173	985	382	328	-14
* Otobüs/Bus	4.047	4.498	1.476	1.666	13
<b>TAŞIT ARAÇLARI /MV TOTAL</b>	<b>729.923</b>	<b>828.471</b>	<b>350.716</b>	<b>367.850</b>	<b>5</b>
TRAKTÖR/F.TRACTOR	15.431	14.996	5.999	6.490	8
<b>TOTAL</b>	<b>745.354</b>	<b>843.467</b>	<b>356.715</b>	<b>374.340</b>	<b>5</b>

	2004	2005	2006	2007	2008	2009	2010	2011	2012	2013	2014
Üretim/Production	864.073	916.062	1.026.427	1.132.951	1.171.917	884.466	1.124.982	1.234.637	1.115.233	1.166.043	476.230
İhracat/Exports	518.595	561.078	706.402	829.879	920.763	637.855	763.670	801.112	745.354	843.467	374.340
İhracat/Exports (%)	60	61	69	73	79	72	68	65	67	72	79

## Otomotiv Ana ve Yan Sanayii İhracatı (ABD \$) CBU and CKD Exports - \$

SEKTÖR/SECTOR	2011 Toplam (Total)	2012 Toplam (Total)	2013 Toplam (Total)	2013		2014/2013 (%)
				5 Ay (5 Months)	2014	
<b>Toplam Yan Sanayi/Total Component Industry</b>	<b>8.307.826.870</b>	<b>8.215.954.295</b>	<b>9.065.989.776</b>	<b>3.722.514.928</b>	<b>4.170.381.819</b>	<b>12</b>
İç ve Dış Lastik / Tyres	1.373.205.546	1.199.572.093	1.130.088.420	480.778.212	518.301.860	8
Emniyet Camı / Safety Glasses	120.041.467	120.641.763	135.200.030	57.607.295	65.855.178	14
Motor (Engine)	273.896.369	272.085.582	319.294.885	136.244.953	75.979.438	-44
Akümülatör / Batteries	232.611.079	250.104.807	306.455.257	102.275.299	105.781.259	3
Diğer Aksam ve Parça / Spare Parts and Components	6.308.072.409	6.373.550.048	7.174.951.182	2.945.609.169	3.404.464.083	16
<b>Toplam Ana Sanayi/Total Vehicle Industry</b>	<b>12.128.522.618</b>	<b>11.100.457.162</b>	<b>12.497.186.221</b>	<b>5.082.525.815</b>	<b>5.697.594.233</b>	<b>12</b>
Otobüs / Bus	929.372.870	855.424.304	937.790.963	331.678.468	376.425.714	13
Midibüs-Minibüs / Minibus- Minibus	145.199.034	161.806.275	147.802.463	56.410.485	20.436.112	-64
Otomobil (P. Cars)	6.541.969.418	6.068.045.119	6.855.870.707	2.905.795.929	3.211.700.809	11
Kamyon-Kamyonet/HCV-LCV	4.034.772.621	3.433.310.999	3.919.399.958	1.561.566.435	1.808.771.315	16
Çekici/Truck-Tractor	116.912.332	71.336.635	77.907.407	86.728.591	104.182.268	20
Römork ve Yarı Römork/Trailer-Semi Trailer	147.247.613	195.093.537	218.649.302	11.683.027	16.701.414	43
Tarım Traktörü/Farm Tractor	213.048.730	315.440.294	339.765.421	128.662.880	159.376.600	24
<b>Toplam/Total</b>	<b>20.436.349.488</b>	<b>19.316.411.457</b>	<b>21.563.175.997</b>	<b>8.805.040.743</b>	<b>9.867.976.051</b>	<b>12</b>

Kaynak: Otomotiv Endüstrisi İhracatçıları Birliği



## Firma Bazında İhracat (Adet) Export Of member Companies (Unit)

FİRMALAR Companies	2012	2013	Ocak-Mayıs 5 Months	
			2013	2014
OYAK RENAULT	227.162	266.508	123.858	107.347
FORD OTOSAN	191.149	208.722	96.042	73.050
HYUNDAI ASSAN	67.453	85.500	30.169	70.870
TOFAŞ	154.068	160.309	71.874	61.738
TOYOTA	63.549	86.908	20.505	52.169
TÜRK TRAKTÖR	14.572	14.402	5.804	6.003
M. BENZ TÜRK	4.054	5.331	1.237	1.171
HONDA TÜRKİYE	7.959	2.121	1.000	540
HATTAT TARIM	859	594	195	487
MAN TÜRKİYE	885	898	402	418
A.I.O.S.	943	770	319	323
TEMSA GLOBAL	856	663	212	133
OTOKAR	510	620	158	81
KARSAN	10.994	10.120	4.939	10
<b>GENEL TOPLAM</b>	<b>745.354</b>	<b>843.467</b>	<b>356.715</b>	<b>374.340</b>

Kaynak: OSD

## Sektör Bazında İhracat (\$) Exports on Sectorial Basis

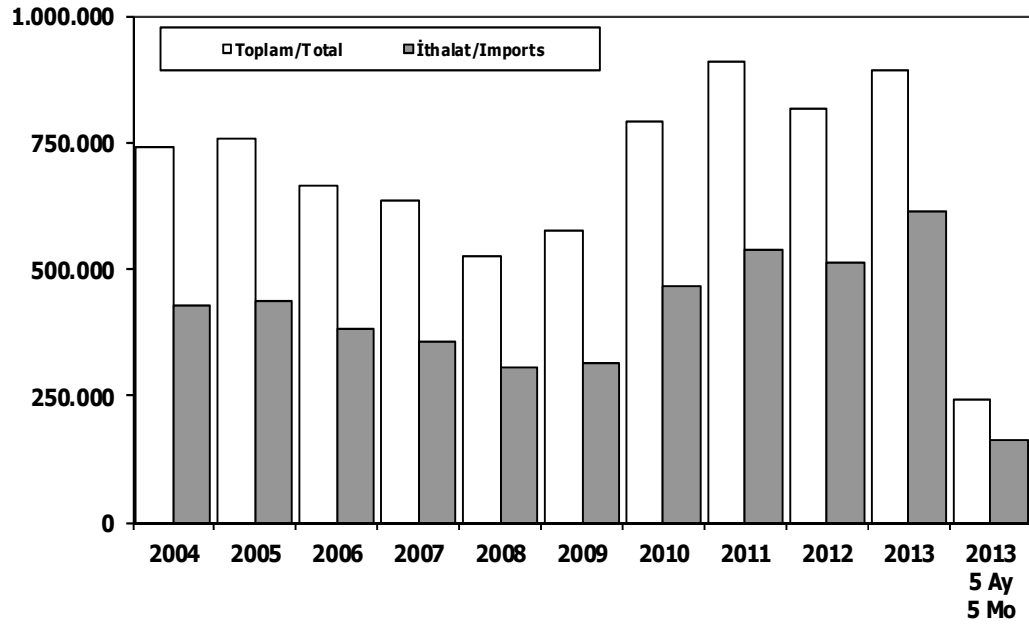
Sıra No	Sektörler	2013 Toplam	Ocak-Mayıs			
			2013	2014	2014/2013 (%)	2014 (%) Pay
1	Otomotiv Endüstrisi *	21.305.104	8.408.931	8.747.882	4,0	14,1
2	Kimyevi Maddeler ve Mamülleri	17.441.096	7.295.196	7.207.804	-1,2	11,6
3	Çelik	17.372.633	6.585.809	6.361.239	-3,4	10,2
4	Hazırgiyim ve Konfeksiyon	13.835.180	6.507.036	7.005.787	7,7	11,3
5	Elektrik-Elektronik ve Makina	11.701.482	4.996.256	4.532.585	-9,3	7,3
6	Tekstil ve Hammaddeleri	8.391.398	3.269.052	3.518.412	7,6	5,7
7	Demir ve Demir Dışı Metaller	6.834.461	2.638.956	2.638.956	0,0	4,2
8	İhracatçı Birlikleri Kaydından Muaf İhracat	6.586.157	2.595.396	2.629.352	1,3	4,2
9	Hububat, Bakliyat, Yağlı Tohumlar	6.263.742	2.446.346	2.613.876	6,8	4,2
10	Makine ve Aksamları	5.801.970	2.199.463	2.402.124	9,2	3,9
11	İklimlendirme Sanayi	5.042.322	1.553.030	1.668.319	7,4	2,7
12	Ağaç Mamülleri, Orman Ürünleri	4.458.639	1.526.195	1.728.795	13,3	2,8
13	Madencilik Ürünleri	4.200.543	1.516.963	2.075.531	36,8	3,3
14	Çimento ve Toprak Ürünleri	3.153.737	1.292.006	1.347.026	4,3	2,2
15	Yaş Meyve ve Sebze	2.351.780	910.070	919.422	1,0	1,5
16	Mücevher	2.253.003	844.740	910.158	7,7	1,5
17	Halı	2.196.267	787.443	880.945	11,9	1,4
18	Fındık ve Mamülleri	1.988.676	660.994	687.810	4,1	1,1
19	Su Ürünleri ve Hayvansal Mamuller	1.901.404	647.270	786.232	21,5	1,3
20	Deri ve Deri Mamülleri	1.773.285	594.323	701.665	18,1	1,1
21	Kuru Meyve ve Mamülleri	1.439.207	501.578	547.482	9,2	0,9
22	Savunma Sanayi	1.391.603	475.085	511.684	7,7	0,8
23	Meyve Sebze Mamülleri	1.331.417	471.038	498.747	5,9	0,8
24	Tütün ve Mamülleri	1.163.591	441.026	446.111	1,2	0,7
25	Gemi ve Yat	906.814	331.837	426.014	28,4	0,7
26	Zeytin ve Zeytinyağ	439.742	80.985	236.089	191,5	0,4
27	Diğer Sanayi Ürünleri	104.659	36.453	51.008	39,9	0,1
28	Süs Bitkileri	77.092	38.467	41.110	6,9	0,1
	<b>TOPLAM</b>	<b>151.860.946</b>	<b>59.651.944</b>	<b>62.122.165</b>	<b>4,1</b>	<b>100,0</b>

Kaynak: TİM

### **First 5 Sectors:**

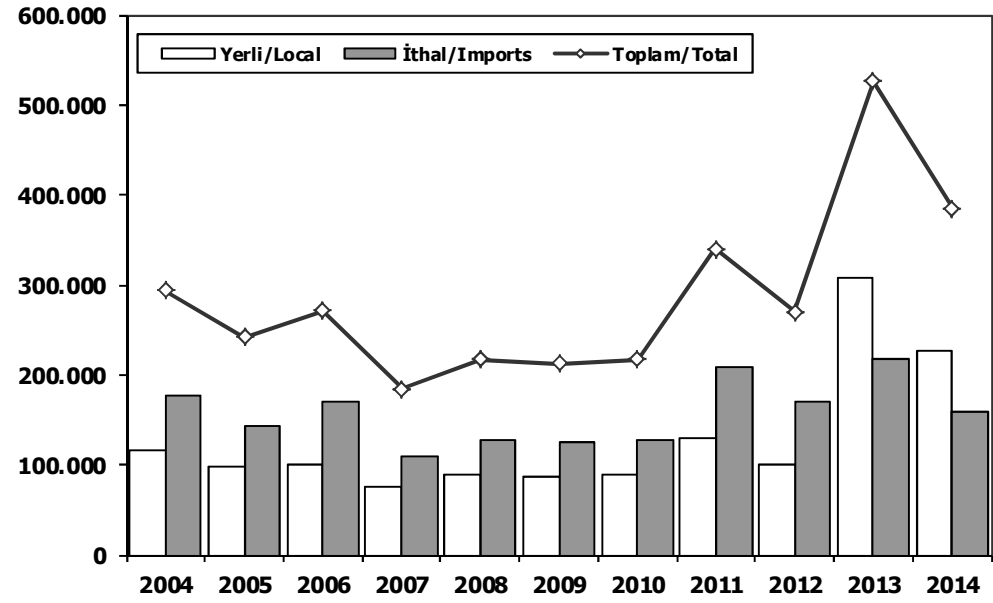
- 1- Transport Vehicle and Component Industry
- 2- Chemical Articles and Products
- 3-Iron Steel Products
- 4-Ready Wear and Confection
- 5-Electric-Electronic and Machine

## Toplam Pazar (Otomobil+T.Araç) Total Market (P.Cars+C.V)



	2004	2005	2006	2007	2008	2009	2010	2011	2012	2013	2012 5 Ay 5 Mo	2013 5 Ay 5 Mo
Toplam/Total	741.269	758.537	665.515	634.206	526.544	575.869	793.172	<b>910.867</b>	817.620	893.124	323.195	241.250
İthalat/Imports	430.204	436.033	382.460	355.752	306.087	313.921	465.408	<b>538.532</b>	511.694	615.609	221.960	161.937
İthalat/Imports (%)	58	57	57	56	58	55	59	59	63	<b>69</b>	69	67

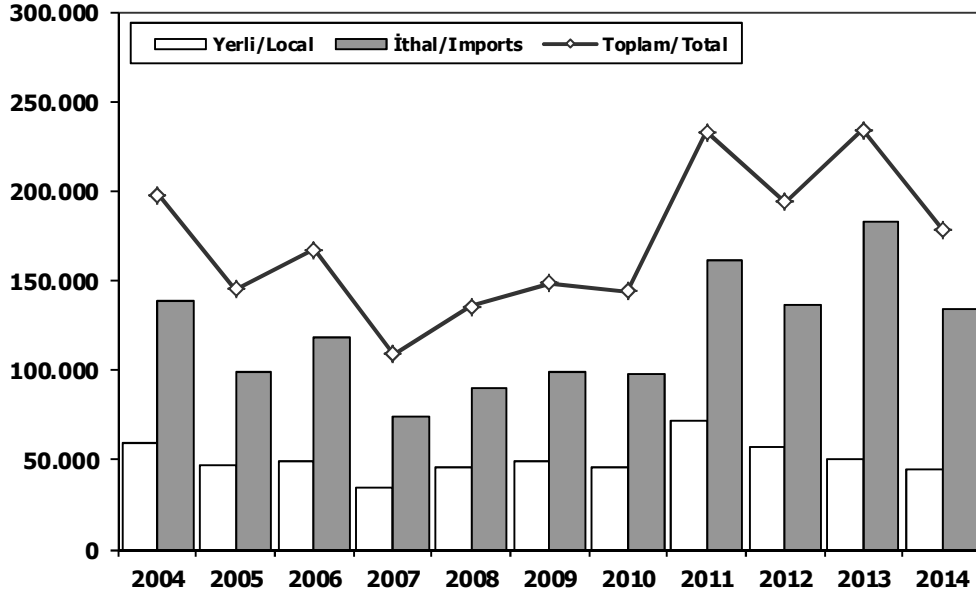
## Hafif Araçlar Pazarı (2004-2014 Ocak-Mayıs) LV Market (2004-2014 January-May)



	2004	2005	2006	2007	2008	2009	2010	2011	2012	2013	2014
Yerli/Local	115.917	97.878	100.514	75.517	89.694	87.908	89.649	<b>130.691</b>	99.558	89.334	67.992
İthal/Imports	178.023	143.543	170.660	108.978	127.032	124.382	127.710	209.608	170.007	<b>218.313</b>	158.706
Toplam/Total	293.940	241.421	271.174	184.495	216.726	212.290	217.359	<b>340.299</b>	269.565	307.647	226.698
İthalat/Imports (%)	61	59	63	59	59	59	59	62	63	<b>71</b>	70

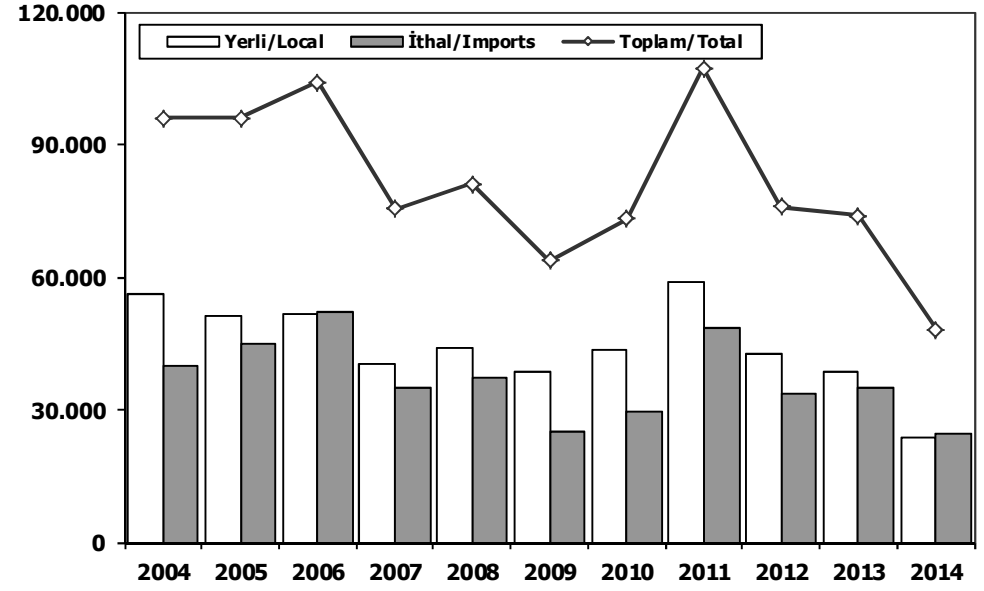
## Otomobil Pazarı (2004-2014 Ocak-Mayıs)

### P.Cars Market (2004-2014 January-May)



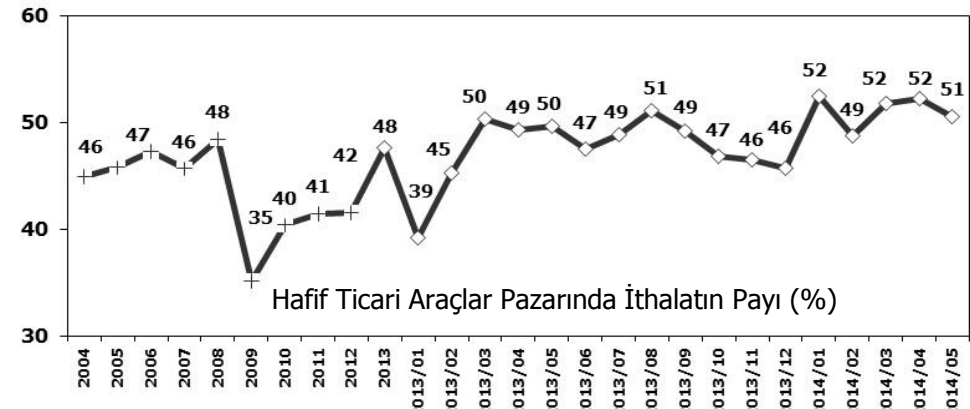
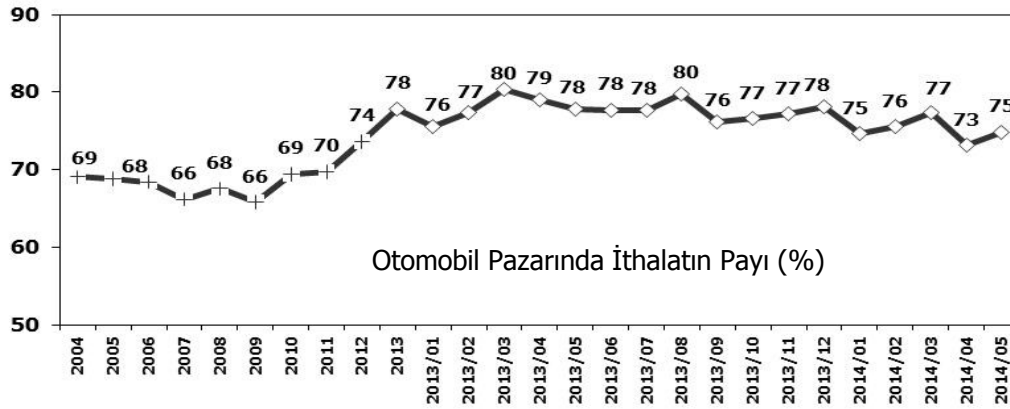
## Hafif Ticari Araçlar Pazarı (2004-2014 Ocak-Mayıs)

### Light Commercial Vehicle Market (2004-2014 January-May)

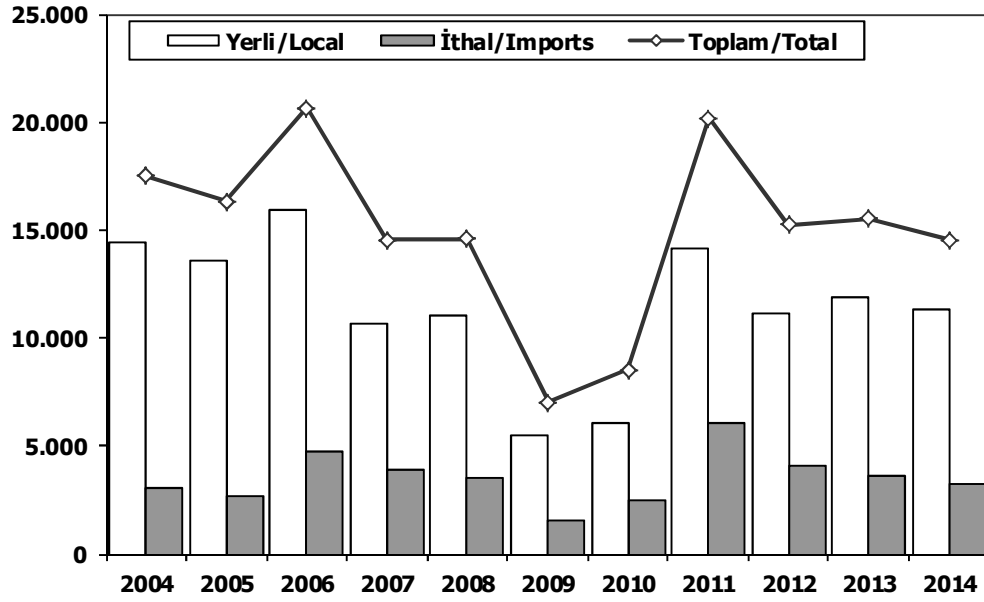


	2004	2005	2006	2007	2008	2009	2010	2011	2012	2013	2014
Yerli/Local	59.703	46.882	48.681	35.047	45.725	49.154	46.102	71.737	57.141	50.678	44.465
İthal/Imports	138.297	98.540	118.448	73.958	89.996	99.523	98.117	161.295	136.500	183.138	134.030
Toplam/Total	198.000	145.422	167.129	109.005	135.721	148.677	144.219	233.032	193.641	233.816	178.495
İthalat/Imports (%)	70	68	71	68	66	67	68	69	70	78	75

	2004	2005	2006	2007	2008	2009	2010	2011	2012	2013	2014
Yerli/Local	56.214	50.996	51.833	40.470	43.969	38.754	43.547	58.954	42.417	38.656	23.527
İthal/Imports	39.726	45.003	52.212	35.020	37.036	24.859	29.593	48.313	33.507	35.175	24.676
Toplam/Total	95.940	95.999	104.045	75.490	81.005	63.613	73.140	107.267	75.924	73.831	48.203
İthalat/Imports (%)	41	47	50	46	46	39	40	45	44	48	51

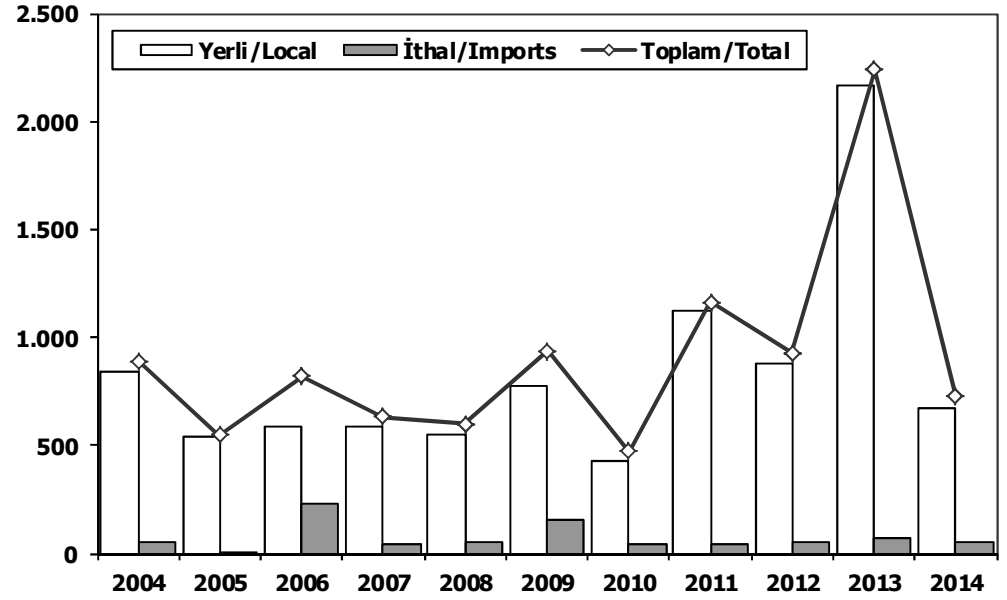


## Ağır Ticari Araçlar Pazarı (2004-2014 Ocak-Mayıs) HCV Market (2004-2014 January-May)



	2004	2005	2006	2007	2008	2009	2010	2011	2012	2013	2014
Yerli/Local	14.454	13.596	<b>15.965</b>	10.662	11.046	5.482	6.026	14.101	11.162	11.901	11.321
İthal/Imports	3.029	2.719	4.708	3.871	3.549	1.549	2.513	<b>6.103</b>	4.110	3.647	3.231
Toplam/Total	17.483	16.315	<b>20.673</b>	14.533	14.595	7.031	8.539	20.204	15.272	15.548	14.552
İthalat/Imports (%)	17	17	23	27	24	22	29	<b>30</b>	27	23	22

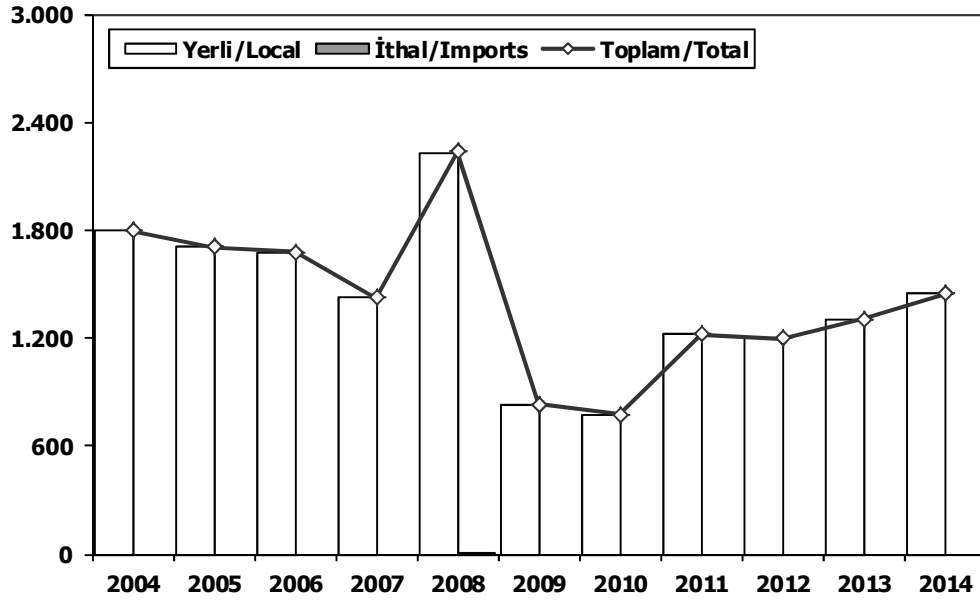
## Otobüs Pazarı (2004-2014 Ocak-Mayıs) Bus Market (2004-2014 January-May)



	2004	2005	2006	2007	2008	2009	2010	2011	2012	2013	2014
Yerli/Local	840	538	587	585	546	779	426	1.124	877	<b>2.171</b>	675
İthal/Imports	50	9	<b>234</b>	46	51	159	45	38	49	70	50
Toplam/Total	890	547	821	631	597	938	471	1.162	926	<b>2.241</b>	725
İthalat/Imports (%)	6	2	<b>29</b>	7	9	17	10	3	5	3	7

## Midibüs Pazarı (2004-2014 Ocak-Mayıs) (7-9 mt/25-35 Kişilik)

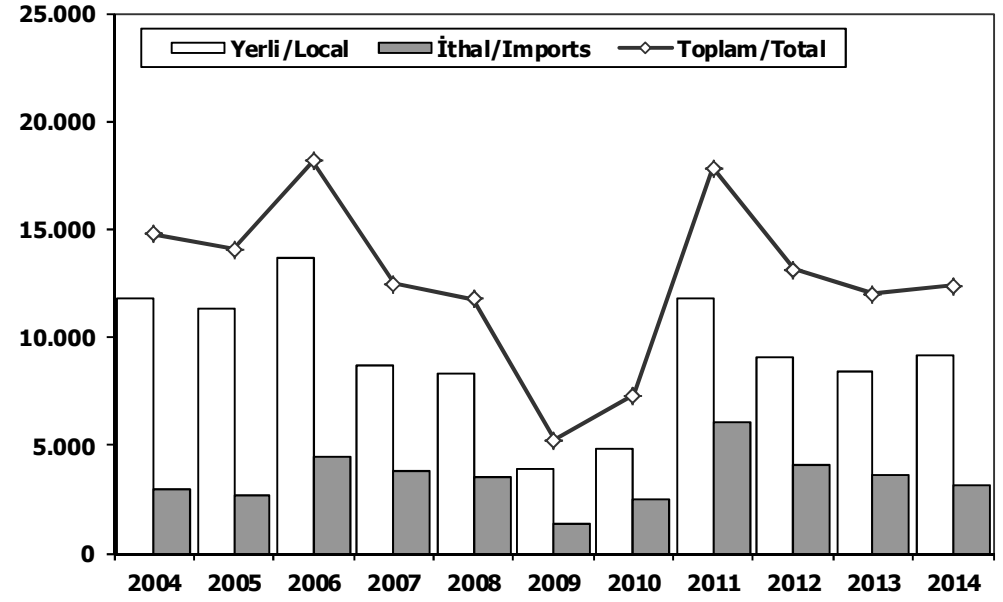
### Midibus Market (2004-2014 January-May) (7-9 mt/25-35 Passengers)



	2004	2005	2006	2007	2008	2009	2010	2011	2012	2013	2014
Yerli/Local	1.795	1.704	1.679	1.423	2.224	832	778	1.223	1.199	1.307	1.446
İthal/Imports	0	0	0	0	10	0	0	0	0	0	0
Toplam/Total	1.795	1.704	1.679	1.423	2.234	832	778	1.223	1.199	1.307	1.446
İthalat/Imports (%)	0	0	0	0	0	0	0	0	0	0	0

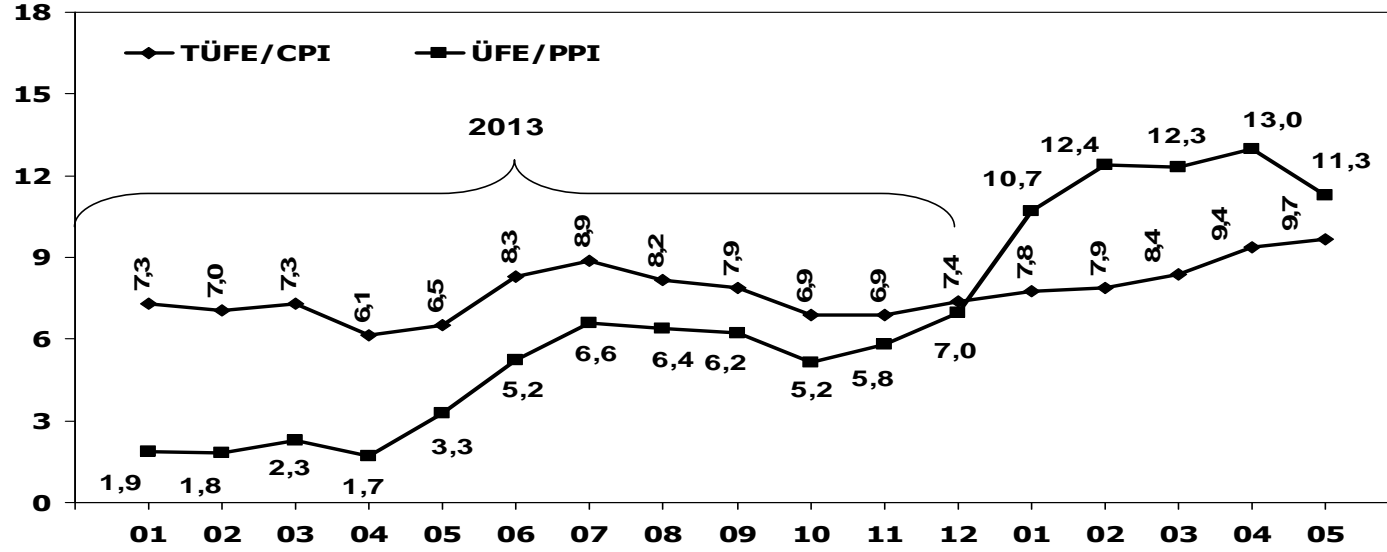
## Kamyon Pazarı (2004-2014 Ocak-Mayıs)

### Truck Market (2004-2014 January-May)

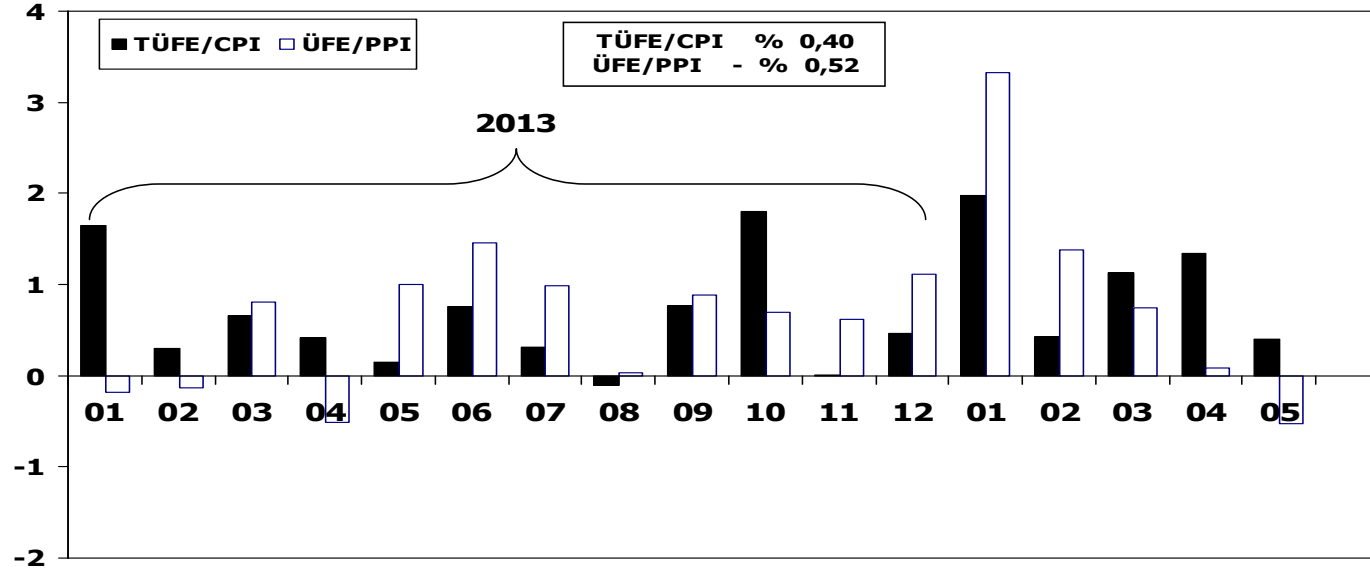


	2004	2005	2006	2007	2008	2009	2010	2011	2012	2013	2014
Yerli/Local	11.819	11.354	13.699	8.654	8.276	3.871	4.822	11.754	9.086	8.423	9.200
İthal/Imports	2.979	2.710	4.474	3.825	3.488	1.390	2.468	6.065	4.061	3.577	3.181
Toplam/Total	14.798	14.064	18.173	12.479	11.764	5.261	7.290	17.819	13.147	12.000	12.381
İthalat/Imports (%)	20	19	25	31	30	26	34	34	31	30	26

## TÜFE ve ÜFE'nin Yıllık Değişimi (%) CPI and PPI Yearly Changes (%)



## TÜFE ve ÜFE'nin Aylık Değişimi (%) CPI and PPI Monthly Changes (%)





## 2014 Yılı İthal Hafif Araç Satışları 2014 Light Vehicles Import Sales

2014 YILI İTHAL OTOMOBİL SATIŞLARI / P.Cars Import 2014

	2013 TOPLAMI 2013 Total	1	2	3	4	5	6	7	8	9	10	11	12	2014 TOPLAMI 2014 Total
VOLKSWAGEN	88.304	4.242	5.080	6.247	7.025	7.193	0	0	0	0	0	0	0	29.787
OPEL	55.719	1.672	1.374	2.316	2.833	3.346	0	0	0	0	0	0	0	11.541
RENAULT	32.904	1.719	1.616	2.101	1.842	2.121	0	0	0	0	0	0	0	9.399
FORD	58.405	1.389	1.244	1.621	2.400	2.866	0	0	0	0	0	0	0	9.520
DACIA	28.901	1.158	1.229	1.854	1.596	1.883	0	0	0	0	0	0	0	7.710
NISSAN	18.417	741	1.603	2.355	1.237	1.181	0	0	0	0	0	0	0	7.117
HYUNDAI	29.824	882	1.125	1.362	1.675	1.861	0	0	0	0	0	0	0	6.905
MERCEDES	20.023	582	900	1.783	1.619	2.083	0	0	0	0	0	0	0	6.967
B.M.W	20.705	334	617	1.875	1.852	1.938	0	0	0	0	0	0	0	6.616
AUDI	14.987	455	750	1.175	1.391	1.598	0	0	0	0	0	0	0	5.369
PEUGEOT	23.068	622	871	1.258	1.208	1.324	0	0	0	0	0	0	0	5.283
SKODA	12.833	458	632	747	907	1.578	0	0	0	0	0	0	0	4.322
CITROEN	19.690	657	715	790	1.062	1.040	0	0	0	0	0	0	0	4.264
KIA	13.195	483	462	694	733	775	0	0	0	0	0	0	0	3.147
SEAT	11.065	536	352	524	762	811	0	0	0	0	0	0	0	2.985
TOYOTA	22.421	366	363	512	682	647	0	0	0	0	0	0	0	2.570
FIAT	10.913	587	313	306	553	723	0	0	0	0	0	0	0	2.482
VOLVO	5.021	252	256	412	509	525	0	0	0	0	0	0	0	1.954
HONDA	3.394	142	257	285	455	161	0	0	0	0	0	0	0	1.300
CHEVROLET	12.506	206	161	134	29	8	0	0	0	0	0	0	0	538
SUBARU	1.101	120	70	116	91	108	0	0	0	0	0	0	0	505
LAND ROVER	1.323	26	52	142	95	144	0	0	0	0	0	0	0	459
MINI (İngiliz)	1.557	51	51	150	45	73	0	0	0	0	0	0	0	370
SUZUKI	1.623	76	68	98	99	179	0	0	0	0	0	0	0	520
MITSUBISHI	1.488	83	81	53	70	65	0	0	0	0	0	0	0	352
MAZDA	1.377	30	40	69	133	57	0	0	0	0	0	0	0	329
PROTON	715	110	22	24	74	80	0	0	0	0	0	0	0	310
ALFA ROMEO	1.030	60	26	32	44	147	0	0	0	0	0	0	0	309
JEEP	973	31	66	64	71	46	0	0	0	0	0	0	0	278
PORSCHE	517	45	31	27	41	41	0	0	0	0	0	0	0	185
SSANGYONG	972	44	16	38	52	30	0	0	0	0	0	0	0	180
LANCIA	782	8	31	44	69	17	0	0	0	0	0	0	0	169
CHERY	492	17	16	34	34	53	0	0	0	0	0	0	0	154
GELY	623	12	5	9	8	3	0	0	0	0	0	0	0	37
MASERATI	40	6	8	9	4	5	0	0	0	0	0	0	0	32
SMART	110	4	5	8	8	5	0	0	0	0	0	0	0	30
JAGUAR	97	0	8	3	5	2	0	0	0	0	0	0	0	18
FERRARI	23	0	3	2	0	2	0	0	0	0	0	0	0	7
BENTLEY	21	0	2	1	0	2	0	0	0	0	0	0	0	5
INFINITI	37	1	0	1	0	1	0	0	0	0	0	0	0	3
LAMBORGHINI	4	0	1	0	0	0	0	0	0	0	0	0	0	1
TATA	326	1	0	0	0	0	0	0	0	0	0	0	0	1
<b>TOPLAM</b>	<b>517.526</b>	<b>18.208</b>	<b>20.522</b>	<b>29.275</b>	<b>31.303</b>	<b>34.722</b>	<b>0</b>	<b>0</b>	<b>0</b>	<b>0</b>	<b>0</b>	<b>0</b>	<b>0</b>	<b>134.030</b>

2014 YILI İTHAL HAFIF TİCARİ ARAÇ SATIŞLARI / Light Commercial Vehicles Import 2014

	2013 TOPLAMI 2013 Total	1	2	3	4	5	6	7	8	9	10	11	12	2014 TOPLAMI 2014 Total
VOLKSWAGEN	23.752	1.152	1.144	1.365	1.779	1.956	0	0	0	0	0	0	0	7.396
RENAULT	11.550	565	431	566	484	613	0	0	0	0	0	0	0	2.649
MERCEDES	10.421	490	389	712	456	493	0	0	0	0	0	0	0	2.540
FIAT	6.245	397	455	414	557	514	0	0	0	0	0	0	0	2.337
DACIA	7.494	510	400	315	340	427	0	0	0	0	0	0	0	1.992
CITROEN	6.679	234	103	318	386	448	0	0	0	0	0	0	0	1.489
PEUGEOT	8.323	78	105	249	445	539	0	0	0	0	0	0	0	1.416
MITSUBISHI	3.592	229	180	201	266	196	0	0	0	0	0	0	0	1.072
ISUZU	2.587	228	138	174	177	190	0	0	0	0	0	0	0	907
TOYOTA	2.413	139	105	349	116	66	0	0	0	0	0	0	0	775
IVECO	2.204	77	127	212	181	168	0	0	0	0	0	0	0	765
HYUNDAI	1.480	117	86	73	117	126	0	0	0	0	0	0	0	519
KIA	453	47	44	62	102	114	0	0	0	0	0	0	0	369
SSANGYONG	859	63	55	11	33	31	0	0	0	0	0	0	0	193
TATA	316	20	34	16	29	27	0	0	0	0	0	0	0	126
NISSAN	878	9	2	20	13	20	0	0	0	0	0	0	0	64
FORD	657	1	23	12	16	7	0	0	0	0	0	0	0	59
MAZDA	3	0	5	0	0	3	0	0	0	0	0	0	0	8
<b>TOPLAM</b>	<b>89.906</b>	<b>4.356</b>	<b>3.826</b>	<b>5.059</b>	<b>5.497</b>	<b>5.938</b>	<b>0</b>	<b>0</b>	<b>0</b>	<b>0</b>	<b>0</b>	<b>0</b>	<b>0</b>	<b>24.676</b>