



AYLIK RAPOR

Automotive Industry Monthly Report

Haziran / June 2014

- **Üretim**/Production
- **Satış**/Sales
- **İthalat**/Imports
- **İhracat**/Exports

OSD "OICA" Üyesidir



OSD is a Member of "OICA"

2014 Haziran Ayı Özeti / 2014 June Summary

KONULAR/ MATTERS		HAZİRAN / JUNE			6 AY/ 6 MONTHS			SON 12 AYLIK / YoY		
		2013	2014	2014/2013 (%)	2013	2014	2014/2013 (%)	2013	2014	2014/2013 (%)
Üretim/ Production	Toplam/ Total	101.975	108.101	6	569.347	564.078	-1	1.077.605	1.120.265	4
	Otomobil/ P.Cars	55.989	65.578	17	303.783	357.047	18	572.156	686.868	20
Pazar/ Market	Toplam/ Total	77.771	63.826	-18	400.966	305.075	-24	858.968	797.233	-7
	Otomobil/ P.Cars	58.290	47.278	-19	292.106	225.773	-23	603.896	598.322	-1
İthalat/ Import	Toplam/ Total	53.657	42.056	-22	275.617	204.514	-26	566.285	544.506	-4
	Otomobil/ P.Cars	45.282	34.819	-23	228.420	168.849	-26	463.600	457.956	-1
İhracat/ Export	Toplam/ Total	70.141	84.731	21	420.857	452.591	8	757.250	860.205	14
	Otomobil/ P.Cars	37.451	53.460	43	233.032	296.156	27	424.444	547.628	29
İhracat / Export (\$)	Toplam/ Total **	1.696.703.883	2.077.294.897	22	10.631.330.893	11.941.663.689	12	19.746.999.509	24.706.535.845	25
	Otomobil/ P.Cars	597.937.200	681.438.723	14	3.503.733.129	3.891.039.893	11	6.255.292.081	7.847.324.028	25

PARAMETRELER / PARAMETERS		HAZİRAN / JUNE			6 AY/ 6 MONTHS			SON 12 AYLIK / YoY		
		2013	2014	2014/2013 (%)	2013	2014	2014/2013 (%)	2013	2014	2014/2013 (%)
ÜFE/ PPI		1,46	0,06	**	2,46	5,12	**	5,23	9,75	**
TÜFE/ CPI		0,76	0,31	**	4,00	5,70	**	8,30	9,16	**
Sanayi Endeksi/ Industry Index		1,08	0,13	**	2,77	6,41	**	3,85	12,29	**
\$ (*)		1,9282	2,1264	10	1,8446	2,1643	17	1,8193	2,0925	15
EURO (*)		2,5183	2,9032	15	2,4004	2,9642	23	2,3498	2,8477	21
Japon Yeni (*)		1,9229	2,1025	9	1,9140	2,1209	11	2,0722	2,0659	0

(*) Ortalama Değerler / Average Values

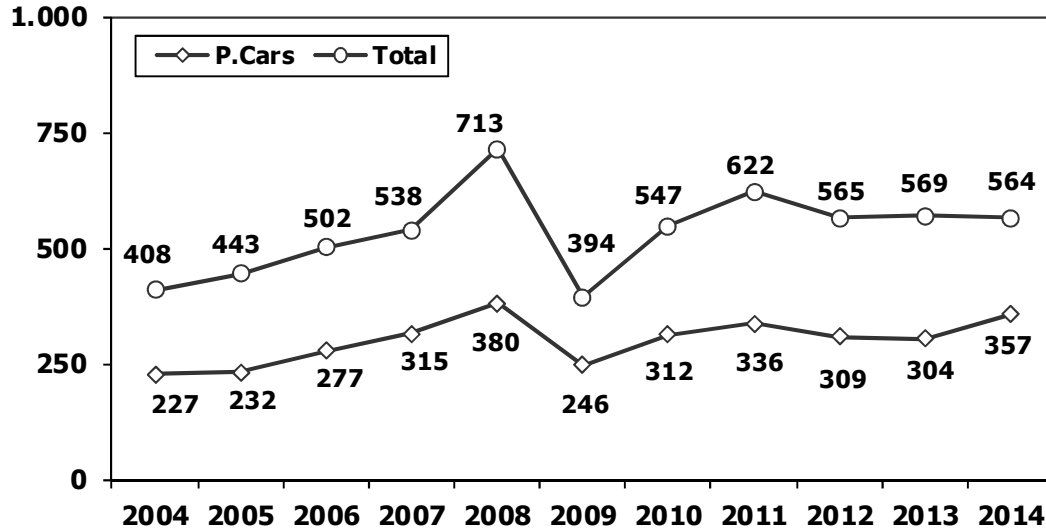
(**) Toplam Sanayi / Total Industry Including Components

2013/2014 Yılları Üretim 2013/2014 Production

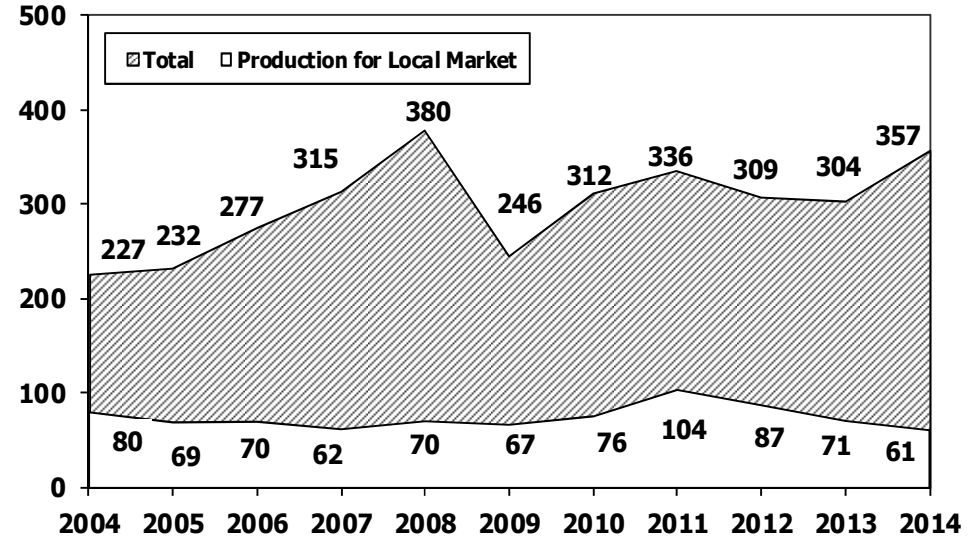
K.KAMYON : AYA 3.5-12 Ton (L.Truck:GWV 3.5-12 Ton)
B.KAMYON : AYA 12 Ton'dan Büyük (M.Truck:GWV 12 Ton And Up)

TİPLER	HAZİRANAYI ÜRETİMİ June Production		6 AYLIK ÜRETİM 6 Months Production		DEĞİŞİM % Percent Change %	
	2013	2014	2013	2014	HAZİRAN June	6 AY 6 Months
OTOMOBİL - Pass.Car	55.989	65.578	303.783	357.047	17	18
TİCARİ ARAÇLAR - Commercial Vehicles	45.986	42.523	265.564	207.031	-8	-22
* B. KAMYON - M. Truck	2.490	2.434	12.936	12.615	-2	-2
* K. KAMYON - L. Truck	353	266	2.050	1.658	-25	-19
* KAMYONET - Pick Up	38.104	35.787	224.157	170.970	-6	-24
* OTOBÜS - Bus	879	534	4.696	3.364	-39	-28
* MİNİBÜS - Minibus	3.718	3.006	19.126	15.264	-19	-20
* MİDİBÜS - Midibus	442	496	2.599	3.160	12	22
TAŞIT ARAÇLARI TOPLAM - MV Total	101.975	108.101	569.347	564.078	6	-1
TRAKTÖR - F.Tractor	4.001	4.426	20.276	24.676	11	22
GENEL TOPLAM - Grand Total	105.976	112.527	589.623	588.754	6	0

Toplam Üretim ve Otomobil Üretimi (x1000) (Ocak-Haziran)
Total & P.Cars Production (x1000) (January- June)



Otomobil Üretimi ve İhracat (x1000) (Ocak-Haziran)
P.Cars Production & Exports (x1000) (January- June)



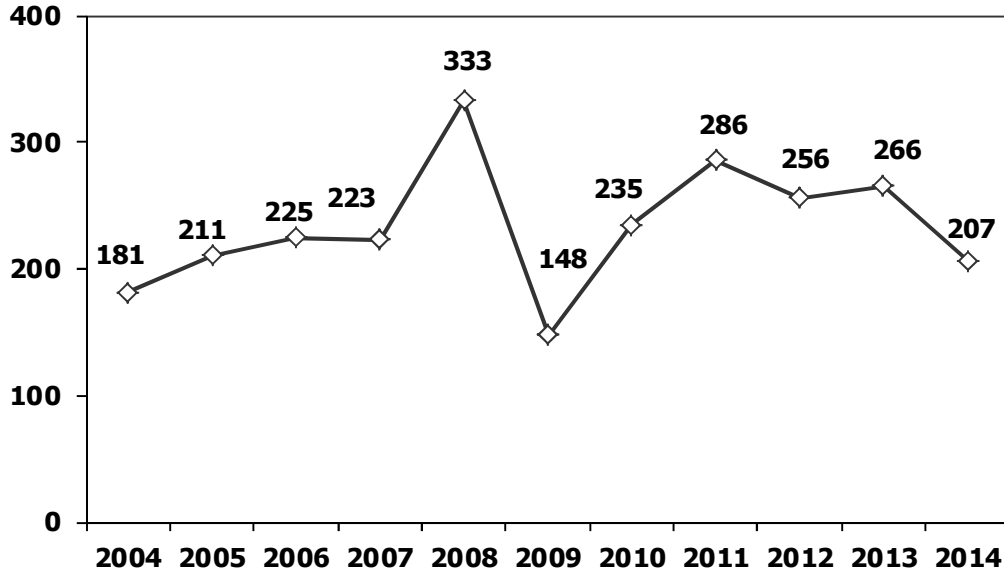
6 Aylık Üretim (6 Months Production)

FİRMALAR Companies	OTOMOBİL Pass.Car	%	K.KAMYON L.Truck	%	B.KAMYON Mid.Truck	%	KAMYONET Pick Up	%	OTOBÜS Bus	%	MİNİBÜS Mini-Bus	%	MİDİBÜS Midi-Bus	%	TRAKTÖR F.Tractor	%	TOPLAM Totals
A.I.O.S.	0	0	1.442	87	0	0	935	1	40	1	0	0	1.039	33	0	0	3.456
FORD OTOSAN	0	0	0	0	3.370	27	91.497	54	0	0	14.721	96	0	0	0	0	109.588
HATTAT TARIM	0	0	0	0	0	0	0	0	0	0	0	0	0	0	1.393	6	1.393
HONDA TÜRKİYE	7.093	2	0	0	0	0	0	0	0	0	0	0	0	0	0	0	7.093
HYUNDAI ASSAN	98.300	28	0	0	0	0	0	0	0	0	0	0	0	0	0	0	98.300
KARSAN	0	0	0	0	0	0	7	0	43	1	532	3	13	0	0	0	595
M. BENZ TÜRK	0	0	0	0	9.245	73	0	0	1.814	54	0	0	0	0	0	0	11.059
MAN TÜRKİYE	0	0	0	0	0	0	0	0	524	16	0	0	0	0	0	0	524
OTOKAR	0	0	216	13	0	0	171	0	225	7	11	0	1.275	40	0	0	1.898
OYAK RENAULT	153.990	43	0	0	0	0	0	0	0	0	0	0	0	0	0	0	153.990
TEMSA GLOBAL	0	0	0	0	0	0	0	0	718	21	0	0	833	26	0	0	1.551
TOFAŞ	28.614	8	0	0	0	0	78.360	46	0	0	0	0	0	0	0	0	106.974
TOYOTA	69.050	19	0	0	0	0	0	0	0	0	0	0	0	0	0	0	69.050
TÜRK TRAKTÖR	0	0	0	0	0	0	0	0	0	0	0	0	0	0	23.283	94	23.283
TOPLAM	357.047	687	1.658	640	12.615	714	170.970	930	3.364	694	15.264	993	3.160	528	24.676	725	588.754

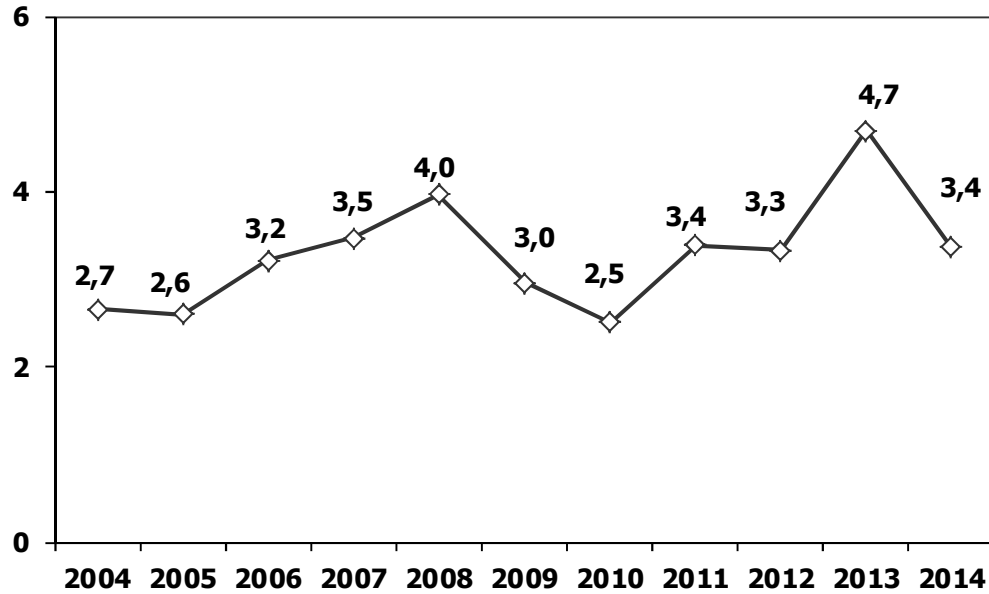
Haziran Ayı Üretimi (June Production)

FİRMALAR Companies	OTOMOBİL Pass.Car	%	K.KAMYON L.Truck	%	B.KAMYON Mid.Truck	%	KAMYONET Pick Up	%	OTOBÜS Bus	%	MİNİBÜS Mini-Bus	%	MİDİBÜS Midi-Bus	%	TRAKTÖR F.Tractor	%	TOPLAM Totals
A.I.O.S.	0	0	229	86	0	0	265	1	3	1	0	0	176	35	0	0	673
FORD OTOSAN	0	0	0	0	733	30	20.995	59	0	0	2.856	95	0	0	0	0	24.584
HATTAT	0	0	0	0	0	0	0	0	0	0	0	0	0	0	215	5	215
HONDA TÜRKİYE	1.200	2	0	0	0	0	0	0	0	0	0	0	0	0	0	0	1.200
HYUNDAI ASSAN	19.311	29	0	0	0	0	0	0	0	0	0	0	0	0	0	0	19.311
KARSAN	0	0	0	0	0	0	5	0	3	1	150	5	13	3	0	0	171
M. BENZ TÜRK	0	0	0	0	1.701	70	0	0	366	69	0	0	0	0	0	0	2.067
MAN TÜRKİYE	0	0	0	0	0	0	0	0	67	13	0	0	0	0	0	0	67
OTOKAR	0	0	37	14	0	0	50	0	47	9	0	0	208	42	0	0	342
OYAK RENAULT	27.098	41	0	0	0	0	0	0	0	0	0	0	0	0	0	0	27.098
TEMSA	0	0	0	0	0	0	0	0	48	9	0	0	99	20	0	0	147
TOFAŞ	5.867	9	0	0	0	0	14.472	40	0	0	0	0	0	0	0	0	20.339
TOYOTA	12.102	18	0	0	0	0	0	0	0	0	0	0	0	0	0	0	12.102
TÜRK TRAKTÖR	0	0	0	0	0	0	0	0	0	0	0	0	0	0	4.211	95	4.211
TOPLAM	65.578	100	266	100	2.434	100	35.787	100	534	100	3.006	100	496	100	4.426	100	112.527

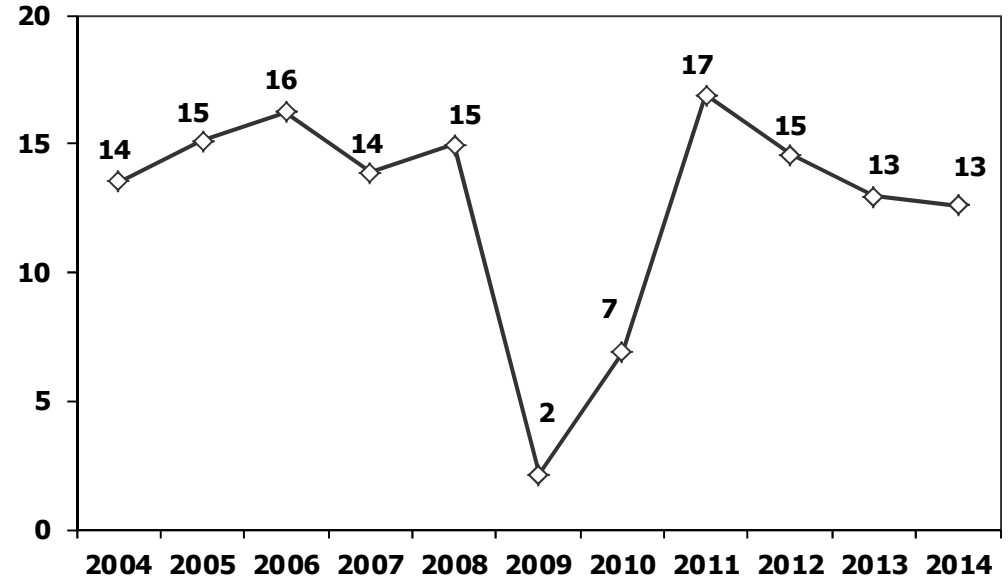
Ticari Araç Üretimi (x1000) (Ocak-Haziran)
Commercial Vehicle Production (x1000) (January- June)



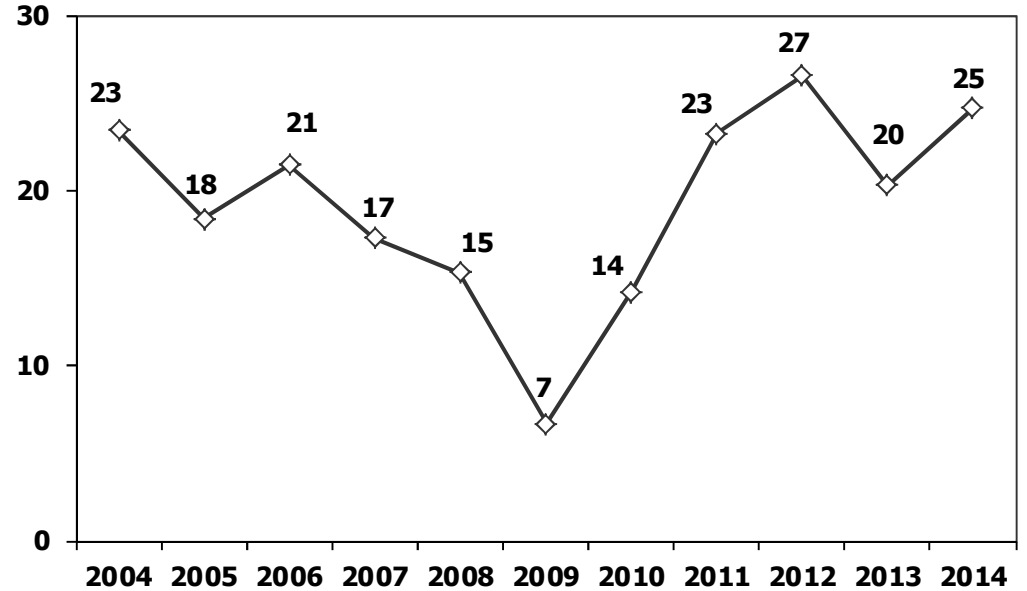
Otobüs Üretimi (x1000) (Ocak-Haziran)
Bus Production (x1000) (January- June)



(AYA >12 Ton) **Büyük Kamyon Üretimi** (x1000) (Ocak-Haziran)
(GVW >12 Ton) Heavy Truck Production (x1000) (January- June)

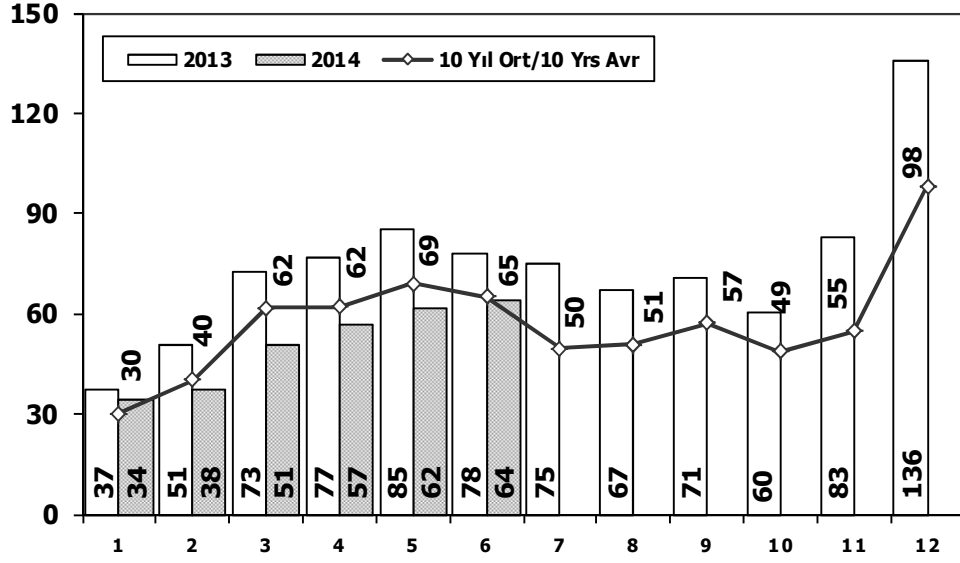


Traktör Üretimi (x1000) (Ocak-Haziran)
F. Tractor Production (x1000) (January- June)



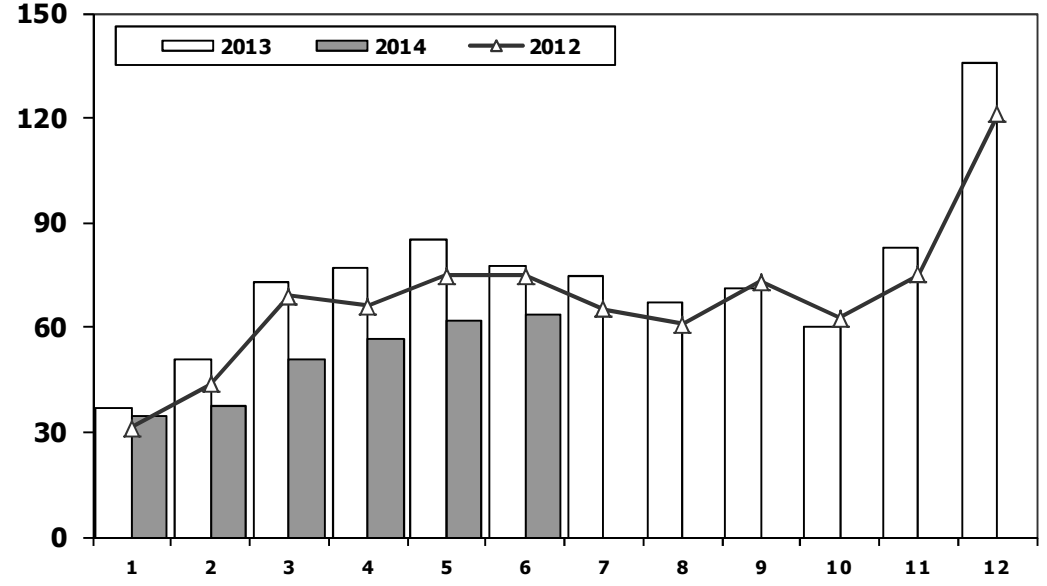
Toplam Pazarın Analizi (x1000)

Total Market Analysis (x1000)



Toplam Pazar (x1000)

Total Market (x1000)

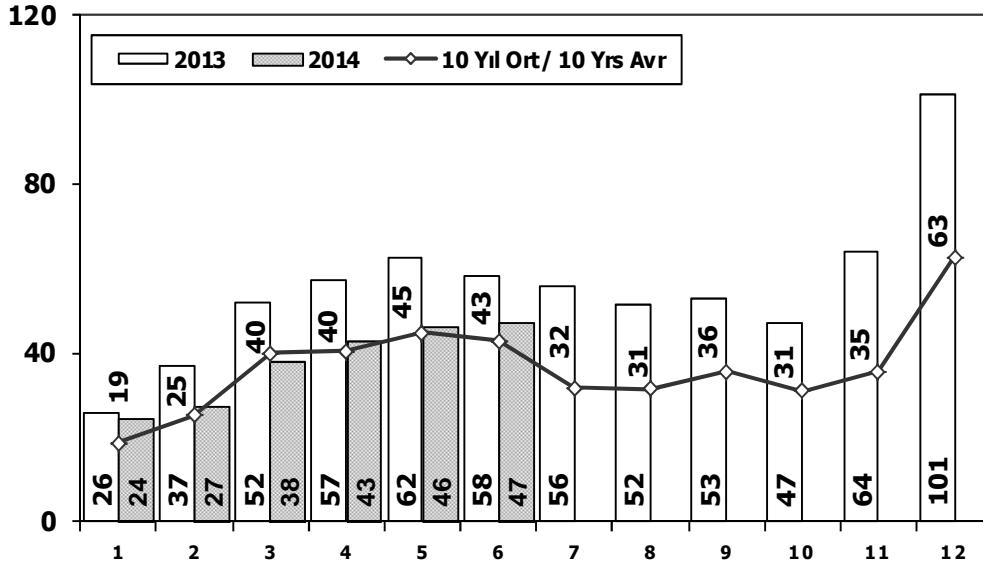


Aylar / Months	10 Yil Ort. 10 Yrs Avr. (x1000)	2014 (x1000)	%
1	30,3	34,3	13,2
2	40,3	37,5	-6,8
3	61,8	50,8	-17,8
4	62,0	56,7	-8,4
5	69,1	61,9	-10,5
6	65,2	63,8	-2,2
Total	328,7	305,1	-7,2

	1	2	3	4	5	6	7	8	9	10	11	12	6 Ay/Mo	Total
2004	38.621	39.389	71.723	77.056	84.634	63.228	57.307	56.422	59.429	56.153	52.237	85.070	374.651	741.269
2005	22.687	38.291	64.502	60.873	71.383	64.379	63.847	68.647	66.580	60.791	65.719	110.838	322.115	758.537
2006	29.969	44.646	65.090	68.853	83.289	58.203	40.037	47.374	49.629	39.805	55.898	82.722	350.050	665.515
2007	24.950	31.702	45.488	45.633	51.255	51.661	50.117	54.171	50.078	56.058	67.017	106.076	250.689	634.206
2008	33.792	38.121	56.814	50.967	51.627	49.393	44.692	46.592	46.829	35.147	28.152	44.418	280.714	526.544
2009	20.631	22.846	56.531	54.426	64.887	63.102	30.246	37.092	83.403	22.117	29.202	91.386	282.423	575.869
2010	21.050	32.313	53.828	57.079	61.628	63.390	63.718	64.645	66.601	76.780	77.406	154.734	289.288	793.172
2011	47.658	62.348	83.333	82.071	85.093	85.863	65.364	61.378	63.643	72.640	67.195	134.281	446.366	910.867
2012	31.219	43.827	68.957	66.014	74.820	74.781	65.122	60.848	73.197	62.677	75.045	121.113	359.618	817.620
2013	37.140	50.931	72.688	77.015	85.421	77.771	74.726	67.383	71.037	60.399	83.017	135.596	400.966	893.124
2014	34.338	37.519	50.781	56.746	61.865	63.826	0	0	0	0	0	0	305.075	305.075

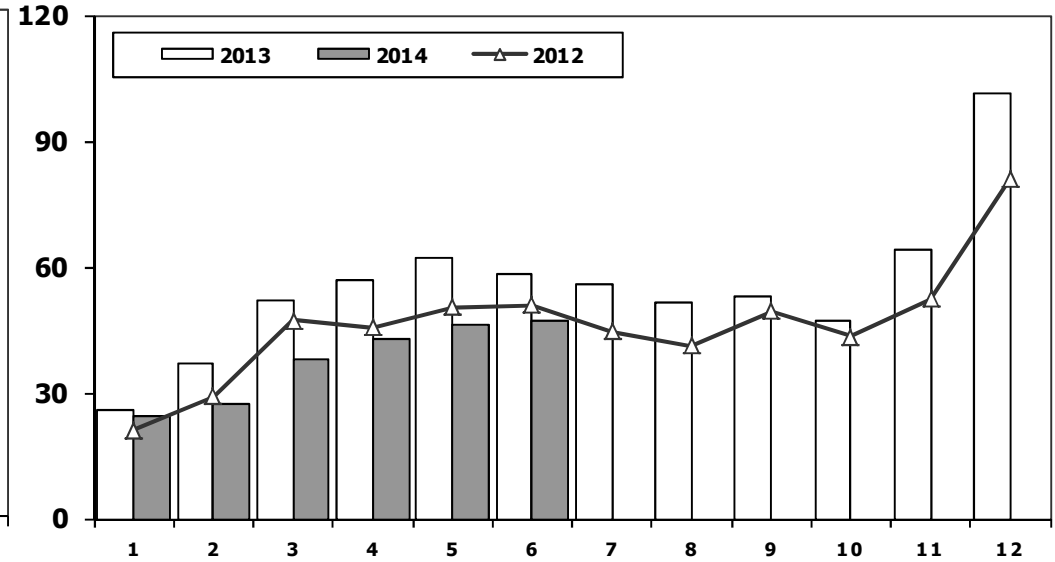
Otomobil Pazarının Analizi (x1000)

P.Cars Market Analysis (x1000)



Otomobil Pazarı (x1000)

P.Cars Market (x1000)

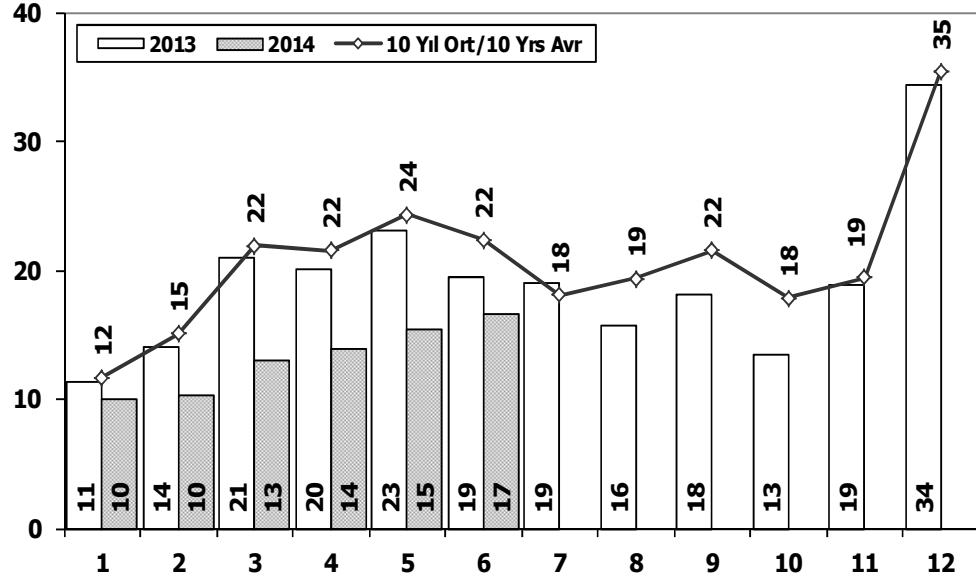


Aylar / Months	10 Yil Ort. 10 Yrs Avr. (x1000)	2014 (x1000)	%
1	18,7	24,4	30,5
2	25,2	27,2	7,9
3	39,9	37,8	-5,3
4	40,4	42,8	5,9
5	44,8	46,4	3,6
6	42,9	47,3	10,2
Total	211,8	225,8	6,6

	1	2	3	4	5	6	7	8	9	10	11	12	6 Ay/Mo	Total
2004	25.625	23.695	46.075	47.995	54.610	37.671	33.410	33.709	33.383	34.292	30.547	50.197	235.671	451.209
2005	11.595	21.012	38.129	36.206	38.480	40.900	38.969	38.648	36.410	34.960	37.841	65.447	186.322	438.597
2006	16.506	24.929	36.996	40.177	48.521	32.982	22.653	24.873	27.517	21.237	30.477	46.351	200.111	373.219
2007	13.186	17.212	24.336	25.204	29.067	30.126	28.246	28.469	27.662	32.569	39.643	61.745	139.131	357.465
2008	18.588	21.196	34.147	30.313	31.477	28.724	25.530	26.102	27.053	19.788	17.201	25.879	164.445	305.998
2009	13.173	14.492	40.622	36.202	44.188	41.019	16.637	22.537	52.162	13.828	17.781	57.178	189.696	369.819
2010	12.594	20.651	33.958	36.549	40.467	42.086	41.399	42.222	42.477	47.859	50.061	99.461	186.305	509.784
2011	29.868	39.004	54.023	53.835	56.302	56.714	43.518	38.875	39.964	47.508	44.951	88.957	289.746	593.519
2012	21.077	29.189	47.270	45.645	50.460	50.849	44.531	41.236	49.360	43.440	52.297	80.926	244.490	556.280
2013	25.835	36.814	51.785	56.999	62.383	58.290	55.712	51.611	52.925	46.985	64.117	101.199	292.106	664.655
2014	24.368	27.167	37.812	42.769	46.379	47.278	0	0	0	0	0	0	225.773	225.773

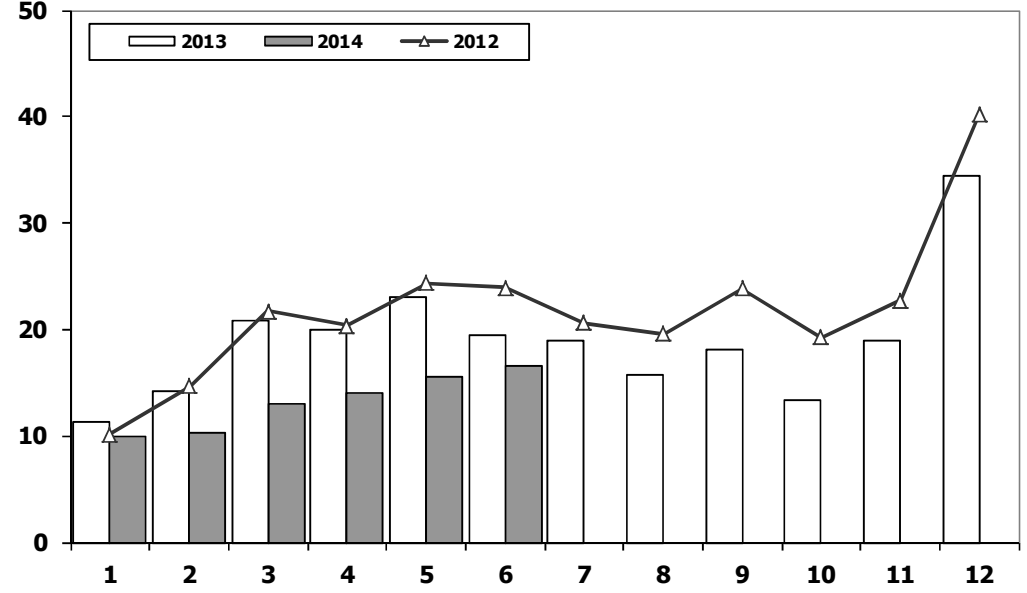
Ticari Araç Pazarının Analizi (x1000)

CV Market Analysis (x1000)



Ticari Araç Pazarı (x1000)

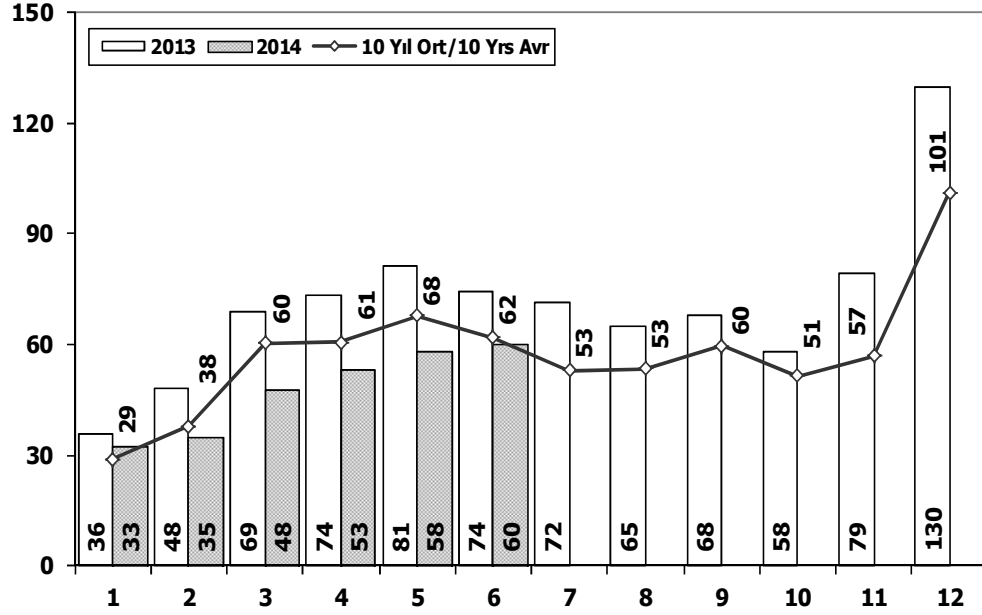
CV Total Market (Local + Imports) (x1000)



Aylar / Months	10 Yil Ort. 10 Yrs Avr. (x1000)	2014 (x1000)	%
1	11,7	10,0	-14,5
2	15,1	10,4	-31,4
3	21,9	13,0	-40,8
4	21,6	14,0	-35,2
5	24,4	15,5	-36,4
6	22,3	16,5	-25,9
Total	116,9	79,3	-32,2

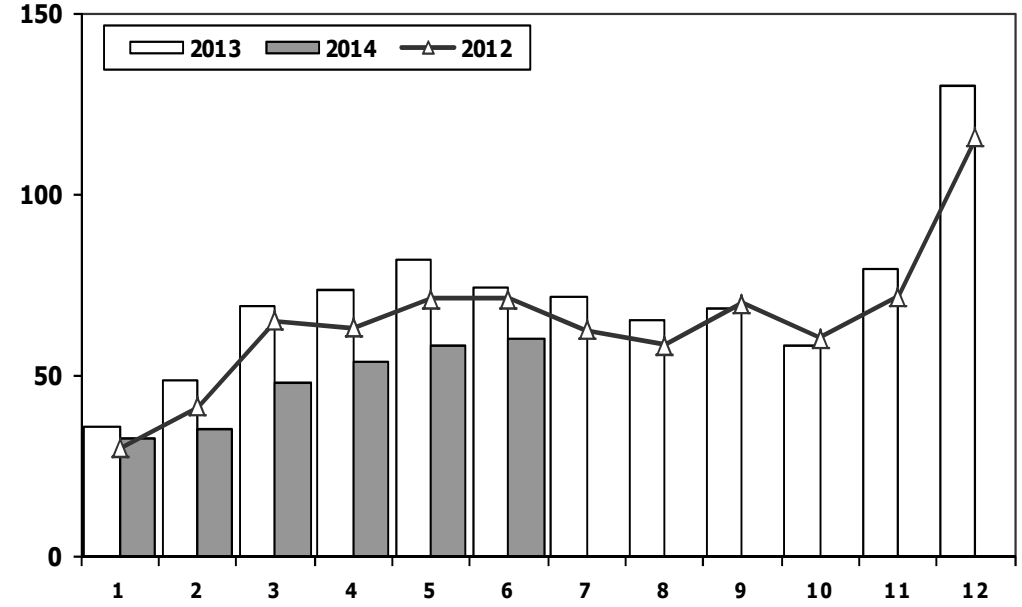
	1	2	3	4	5	6	7	8	9	10	11	12	6 Ay/Mo	Total
2004	12.996	15.694	25.648	29.061	30.024	25.557	23.897	22.713	26.046	21.861	21.690	34.873	138.980	290.060
2005	11.092	17.279	26.373	24.667	32.903	23.479	24.878	29.999	30.170	25.831	27.878	45.391	135.793	319.940
2006	13.463	19.717	28.094	28.676	34.768	25.221	17.384	22.501	22.112	18.568	25.421	36.371	149.939	292.296
2007	11.764	14.490	21.152	20.429	22.188	21.535	21.871	25.702	22.416	23.489	27.374	44.331	111.558	276.741
2008	15.204	16.925	22.667	20.654	20.150	20.669	19.162	20.490	19.776	15.359	10.951	18.539	116.269	220.546
2009	7.458	8.354	15.909	18.224	20.699	22.083	13.609	14.555	31.241	8.289	11.421	34.208	92.727	206.050
2010	8.456	11.662	19.870	20.530	21.161	21.304	22.319	22.423	24.124	28.921	27.345	55.273	102.983	283.388
2011	17.790	23.344	29.310	28.236	28.791	29.149	21.846	22.503	23.679	25.132	22.244	45.324	156.620	317.348
2012	10.142	14.638	21.687	20.369	24.360	23.932	20.591	19.612	23.837	19.237	22.748	40.187	115.128	261.340
2013	11.305	14.117	20.903	20.016	23.038	19.481	19.014	15.772	18.112	13.414	18.900	34.397	108.860	228.469
2014	9.970	10.352	12.969	13.977	15.486	16.548	0	0	0	0	0	0	79.302	79.302

Hafif Araç Pazarının Analizi (x1000) LV Market Analysis (x1000)



Aylar / Months	10 Yil Ort. 10 Yrs Avr. (x1000)	2014 (x1000)	%
1	28,9	32,7	12,9
2	37,9	35,0	-7,7
3	60,2	47,6	-21,0
4	60,6	53,3	-12,0
5	67,8	58,1	-14,3
6	61,9	60,2	-2,7
Total	317,3	286,9	-9,6

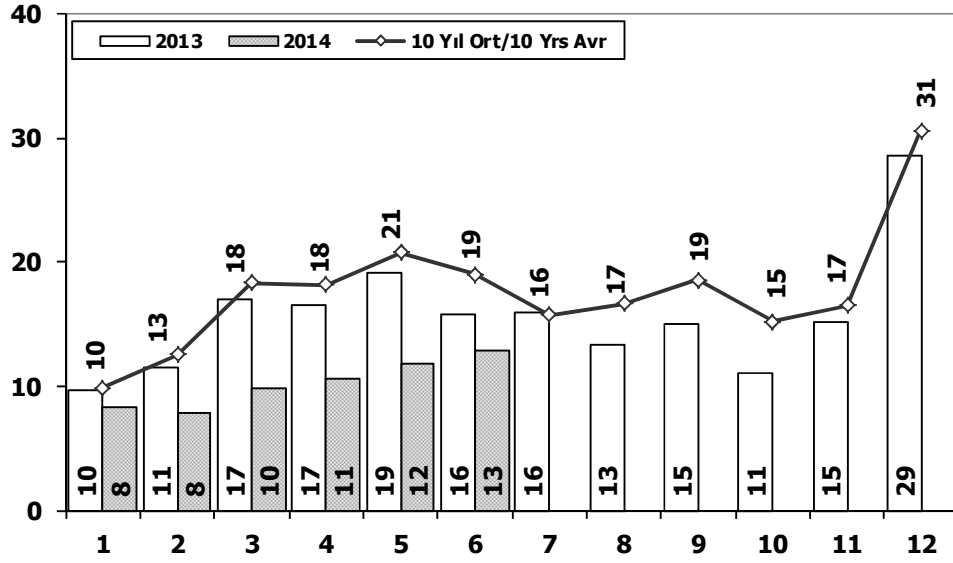
Hafif Araç Pazarı (x1000) LV Total Market (Local + Imports) (x1000)



	1	2	3	4	5	6	7	8	9	10	11	12	6 Ay/Mo	Total
2004	36.352	37.079	67.144	73.075	80.290	59.730	54.816	52.876	55.609	53.000	49.200	78.924	353.670	698.095
2005	20.747	35.766	60.707	56.844	67.357	60.796	61.015	64.011	61.954	56.638	61.364	103.209	302.217	710.408
2006	27.917	40.938	60.052	64.038	78.229	54.355	37.251	43.767	46.109	36.542	51.867	76.787	325.529	617.852
2007	23.117	29.184	41.890	42.366	47.938	48.674	47.490	50.558	46.581	52.725	63.313	100.926	233.169	594.762
2008	31.527	35.251	53.649	47.701	48.598	46.324	42.156	43.670	43.932	32.884	26.253	42.078	263.050	494.023
2009	19.606	21.742	55.111	52.640	63.191	61.067	28.845	35.609	81.397	21.033	27.962	88.923	273.357	557.126
2010	20.095	31.172	51.769	54.946	59.377	60.896	61.345	61.764	63.814	73.404	73.962	148.369	278.255	760.913
2011	44.892	58.663	78.403	77.695	80.646	81.573	63.044	58.406	60.129	69.421	63.657	127.910	421.872	864.439
2012	29.545	41.324	64.884	62.949	70.863	71.067	62.304	58.148	69.629	59.938	71.710	115.400	340.632	777.761
2013	35.523	48.307	68.774	73.575	81.468	74.096	71.596	65.043	67.963	58.014	79.301	129.718	381.743	853.378
2014	32.670	35.021	47.581	53.305	58.121	60.163	0	0	0	0	0	0	286.861	286.861

Hafif Ticari Araç Pazarının Analizi (x1000)

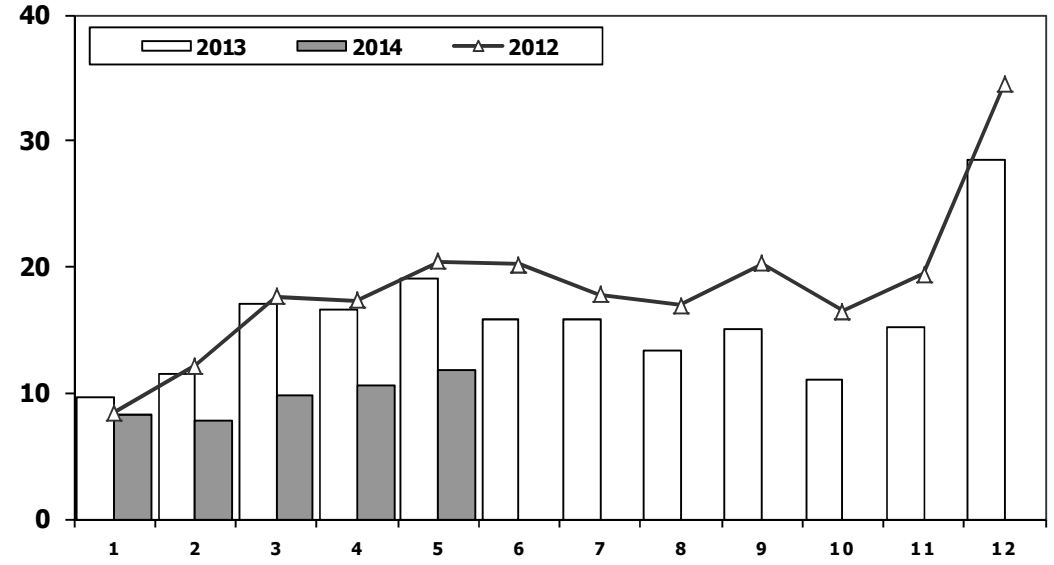
LCV Market Analysis (x1000)



Aylar / Months	10 Yil Ort. 10 Yrs Avr. (x1000)	2014 (x1000)	%
1	9,9	8,3	-16,0
2	12,6	7,9	-37,5
3	18,4	9,8	-46,8
4	18,2	10,5	-42,2
5	20,8	11,7	-43,6
6	19,0	12,9	-32,2
Total	98,9	61,1	-38,2

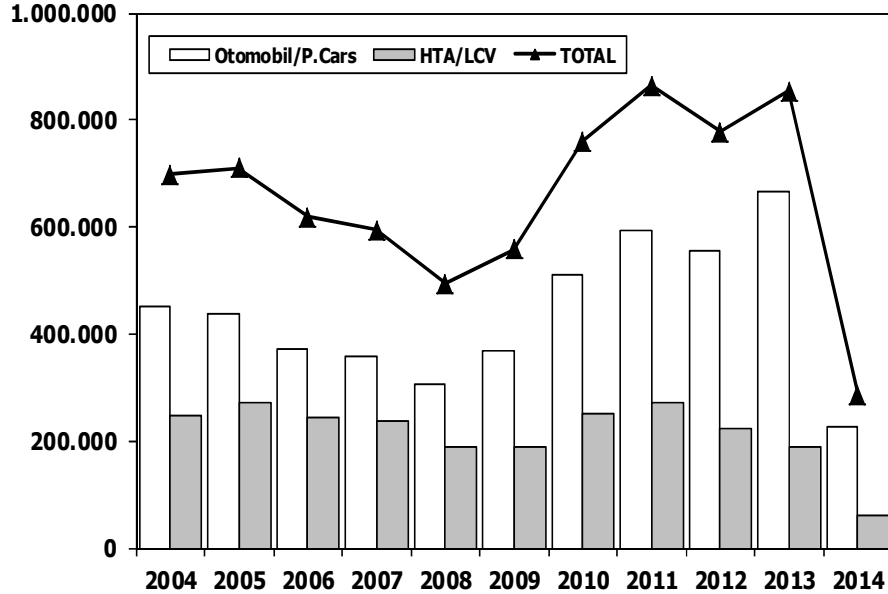
Hafif Ticari Araç Pazarı (x1000)

LCV Total Market (Local + Imports) (x1000)



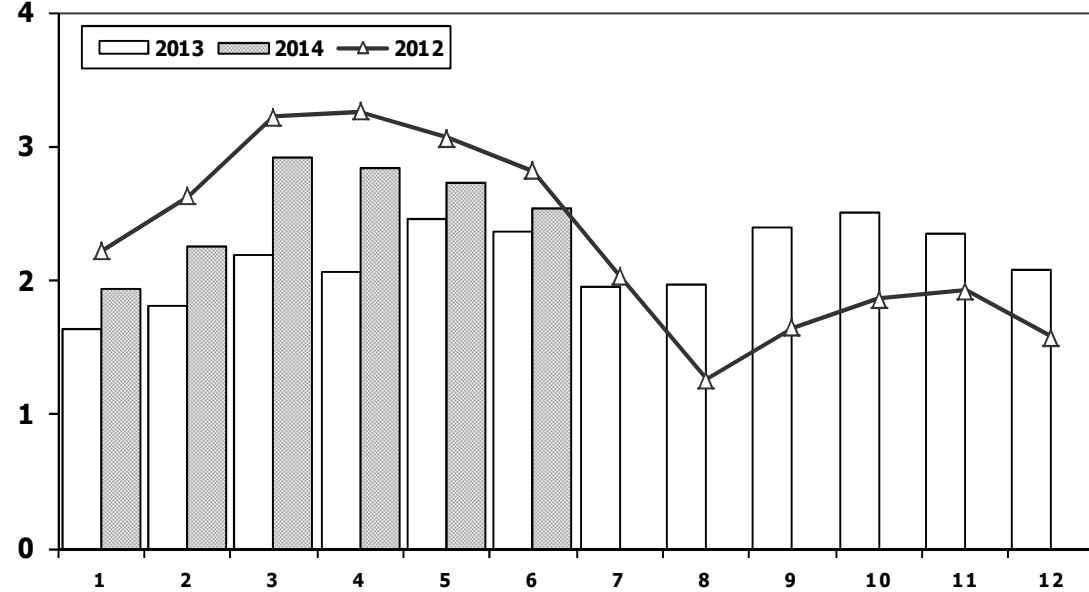
	1	2	3	4	5	6	7	8	9	10	11	12	6 Ay/Mo	Total
2004	10.727	13.384	21.069	25.080	25.680	22.059	21.406	19.167	22.226	18.708	18.653	28.727	117.999	246.886
2005	9.152	14.754	22.578	20.638	28.877	19.896	22.046	25.363	25.544	21.678	23.523	37.762	115.895	271.811
2006	11.411	16.009	23.056	23.861	29.708	21.373	14.598	18.894	18.592	15.305	21.390	30.436	125.418	244.633
2007	9.931	11.972	17.554	17.162	18.871	18.548	19.244	22.089	18.919	20.156	23.670	39.181	94.038	237.297
2008	12.939	14.055	19.502	17.388	17.121	17.600	16.626	17.568	16.879	13.096	9.052	16.199	98.605	188.025
2009	6.433	7.250	14.489	16.438	19.003	20.048	12.208	13.072	29.235	7.205	10.181	31.745	83.661	187.307
2010	7.501	10.521	17.811	18.397	18.910	18.810	19.946	19.542	21.337	25.545	23.901	48.908	91.950	251.129
2011	15.024	19.659	24.380	23.860	24.344	24.859	19.526	19.531	20.165	21.913	18.706	38.953	132.126	270.920
2012	8.468	12.135	17.614	17.304	20.403	20.218	17.773	16.912	20.269	16.498	19.413	34.474	96.142	221.481
2013	9.688	11.493	16.989	16.576	19.085	15.806	15.884	13.432	15.038	11.029	15.184	28.519	89.637	188.723
2014	8.302	7.854	9.769	10.536	11.742	12.885	0	0	0	0	0	0	61.088	61.088

Hafif Arac Pazarı (AYA < 3.5 Ton) Light Vehicle Market (GVW < 3.5 Ton)



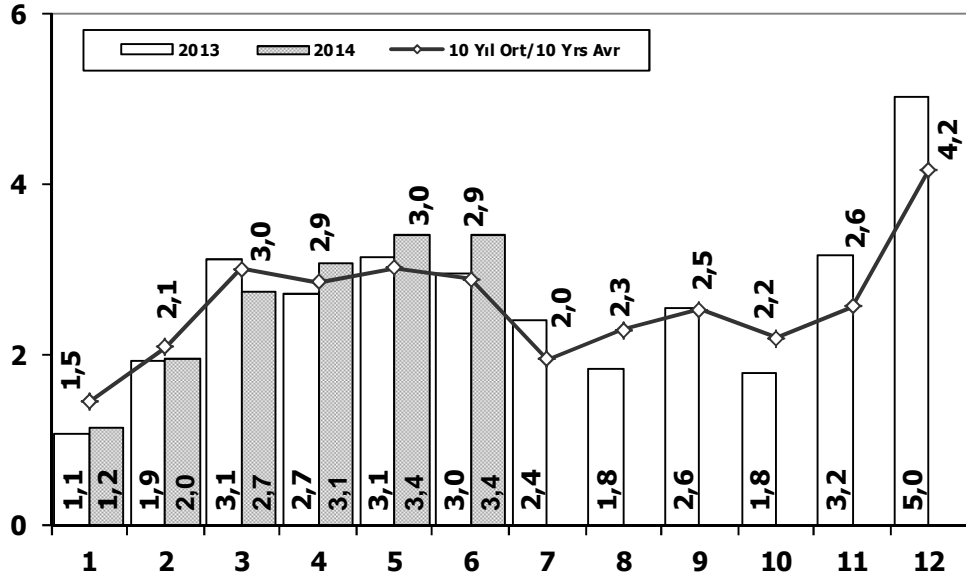
	2004	2005	2006	2007	2008	2009	2010	2011	2012	2013	2014
Otomobil/P.Cars	451.209	438.597	373.219	357.465	305.998	369.819	509.784	593.519	556.280	664.655	225.773
HTA/LCV	246.886	271.811	244.633	237.297	188.025	187.307	251.129	270.920	221.481	188.723	61.088
TOTAL	698.095	710.408	617.852	594.762	494.023	557.126	760.913	864.439	777.761	853.378	286.861
HTA/LCV (%)	35	38	40	40	38	34	33	31	28	22	21

Traktör Pazarı (x1000) F.Tractor Market (x1000)



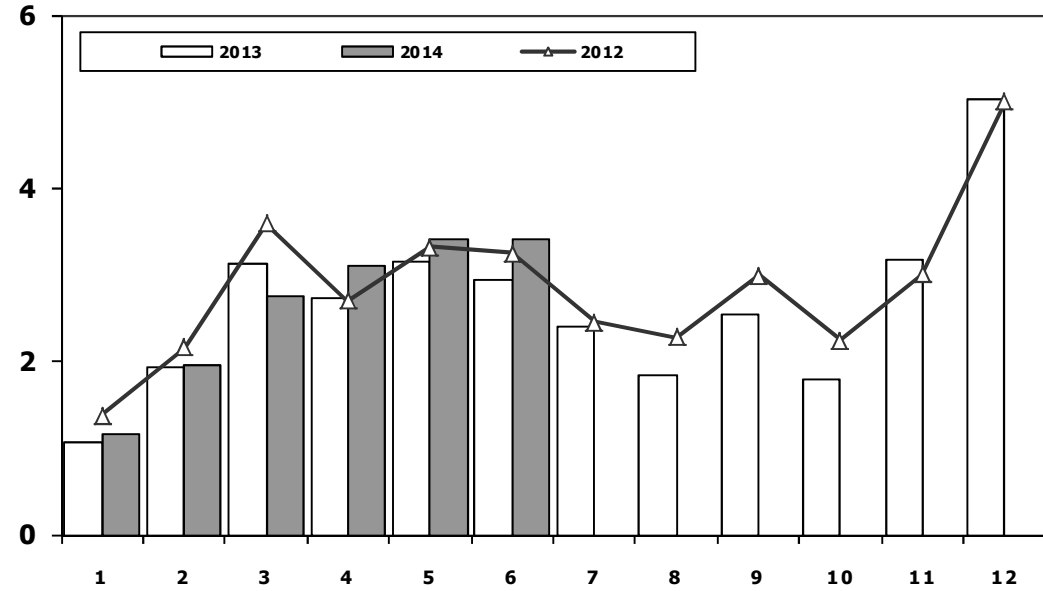
	1	2	3	4	5	6	7	8	9	10	11	12	6 Ay/Mo	Total
2004	1.946	1.874	2.909	3.260	2.863	2.816	1.988	2.209	2.509	1.989	2.198	1.364	15.668	27.925
2005	1.026	1.636	2.001	2.599	2.569	2.780	2.148	2.819	2.567	2.477	2.297	2.089	12.611	27.008
2006	1.578	2.493	2.746	2.841	3.561	2.356	1.685	2.177	2.756	1.915	2.353	1.925	15.575	28.386
2007	1.812	1.778	2.063	2.107	2.266	1.853	1.653	2.065	2.372	2.239	2.231	1.602	11.879	24.041
2008	1.510	1.427	1.933	1.692	1.689	1.592	1.275	924	904	609	707	359	9.843	14.621
2009	267	344	388	638	759	828	741	534	586	765	725	715	3.224	7.290
2010	714	903	1.432	1.653	1.736	1.673	1.613	1.527	2.351	2.787	2.656	2.345	8.111	21.390
2011	2.458	2.610	3.105	3.403	3.847	3.599	2.952	1.559	2.957	2.823	2.603	2.807	19.022	34.723
2012	2.216	2.632	3.223	3.259	3.067	2.821	2.037	1.262	1.648	1.858	1.921	1.579	17.218	27.523
2013	1.633	1.817	2.196	2.070	2.455	2.370	1.955	1.969	2.396	2.510	2.343	2.080	12.541	25.794
2014	1.941	2.256	2.915	2.837	2.723	2.534	0	0	0	0	0	0	15.206	15.206

Kamyon Pazarının Analizi (x1000) AYA > 5 Ton Truck Market Analysis (x1000) GVW > 5 Ton



Aylar / Months	10 Yil Ort. 10 Yrs Avr. (x1000)	2014 (x100)	%
1	1,5	1,2	-19,8
2	2,1	2,0	-6,0
3	3,0	2,7	-8,8
4	2,9	3,1	8,2
5	3,0	3,4	12,8
6	2,9	3,4	18,2
Total	15,3	15,8	3,1

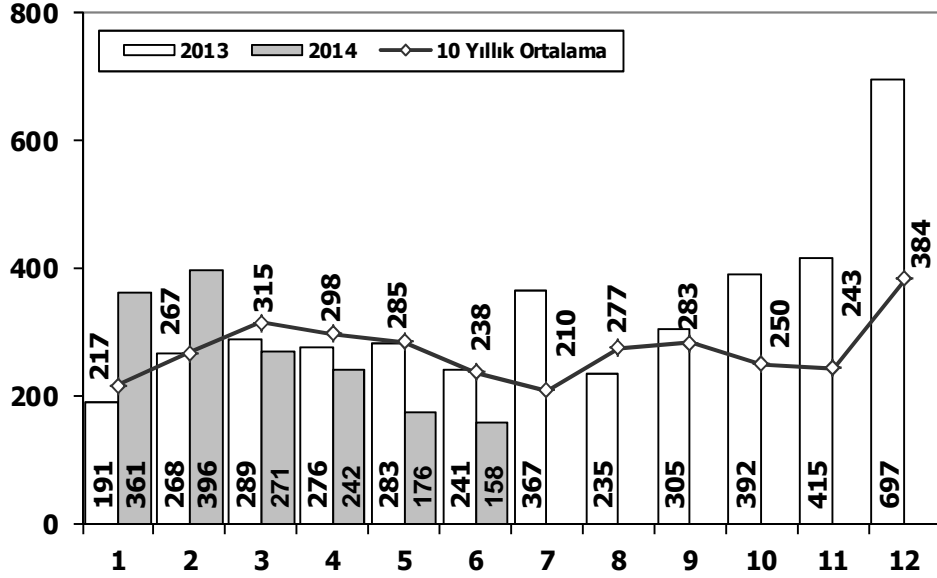
Kamyon Pazarı (x1000) AYA > 5 Ton Truck Market (x1000) GVW > 5 Ton



	1	2	3	4	5	6	7	8	9	10	11	12	6 Ay/Mo	Total
2004	1.863	1.949	3.983	3.352	3.651	3.118	2.234	2.897	3.285	2.727	2.629	5.517	17.916	37.205
2005	1.693	2.186	3.288	3.484	3.413	3.147	2.504	4.028	4.043	3.708	3.918	6.570	17.211	41.982
2006	1.767	3.310	4.467	4.180	4.449	3.398	2.472	3.142	3.052	2.926	3.550	5.358	21.571	42.071
2007	1.554	2.055	3.065	2.940	2.865	2.613	2.372	3.145	2.988	2.886	3.258	4.444	15.092	34.185
2008	1.797	2.309	2.621	2.578	2.459	2.526	2.067	2.377	2.390	1.790	1.512	1.834	14.290	26.260
2009	771	759	1.034	1.342	1.355	1.651	1.156	1.205	1.780	866	981	2.015	6.912	14.915
2010	777	968	1.772	1.807	1.966	2.205	2.093	2.446	2.444	3.071	3.136	5.677	9.495	28.362
2011	2.552	3.292	4.418	3.754	3.803	3.749	1.996	2.478	3.081	2.774	3.108	5.787	21.568	40.792
2012	1.375	2.159	3.595	2.697	3.321	3.250	2.450	2.277	2.991	2.244	3.006	5.000	16.397	34.365
2013	1.077	1.931	3.127	2.720	3.145	2.951	2.411	1.845	2.554	1.801	3.173	5.025	14.951	31.760
2014	1.165	1.968	2.749	3.094	3.405	3.416	0	0	0	0	0	0	15.797	15.797

Midibüs Pazarının Analizi (7-9 mt / 25-35 Kişilik)

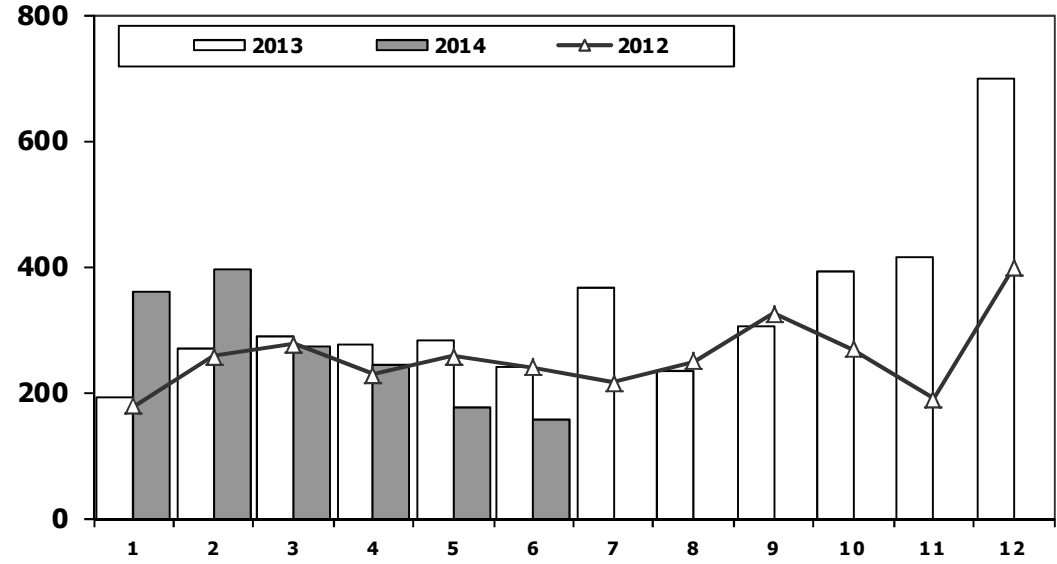
Midibus Market Analysis (7-9 mt / 25-35 Passengers)



Aylar / Months	10 Yıl Ort. 10 Yrs Avr.	2014	%
1	217	361	67
2	267	396	48
3	315	271	-14
4	298	242	-19
5	285	176	-38
6	238	158	-34
Total	1.621	1.604	-1

Midibüs Pazarı (7-9 mt / 25-35 Kişilik Midibüs)

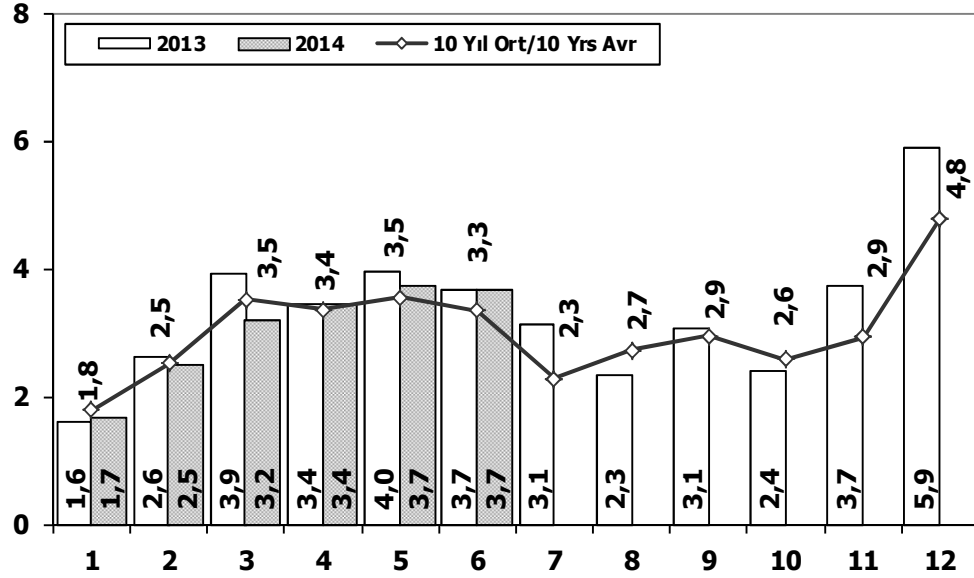
Midibus Market (7-9 mt / 25-35 Passengers)



	1	2	3	4	5	6	7	8	9	10	11	12	6 Ay/Mo	Total
2004	233	226	381	431	524	237	154	531	445	331	319	551	2.032	4.363
2005	182	258	432	393	439	269	252	459	436	329	328	574	1.973	4.351
2006	207	297	406	388	381	266	230	353	322	253	305	401	1.945	3.809
2007	207	272	404	238	302	283	164	365	399	279	283	465	1.706	3.661
2008	391	476	436	512	419	331	368	380	341	352	246	270	2.565	4.522
2009	154	124	160	220	174	198	160	175	168	143	206	323	1.030	2.205
2010	155	131	185	167	140	138	129	246	236	206	202	437	916	2.372
2011	138	195	294	316	280	258	211	305	301	276	260	270	1.481	3.104
2012	179	257	277	229	257	239	216	249	325	269	189	398	1.438	3.084
2013	191	268	289	276	283	241	367	235	305	392	415	697	1.548	3.959
2014	361	396	271	242	176	158	0	0	0	0	0	0	1.604	1.604

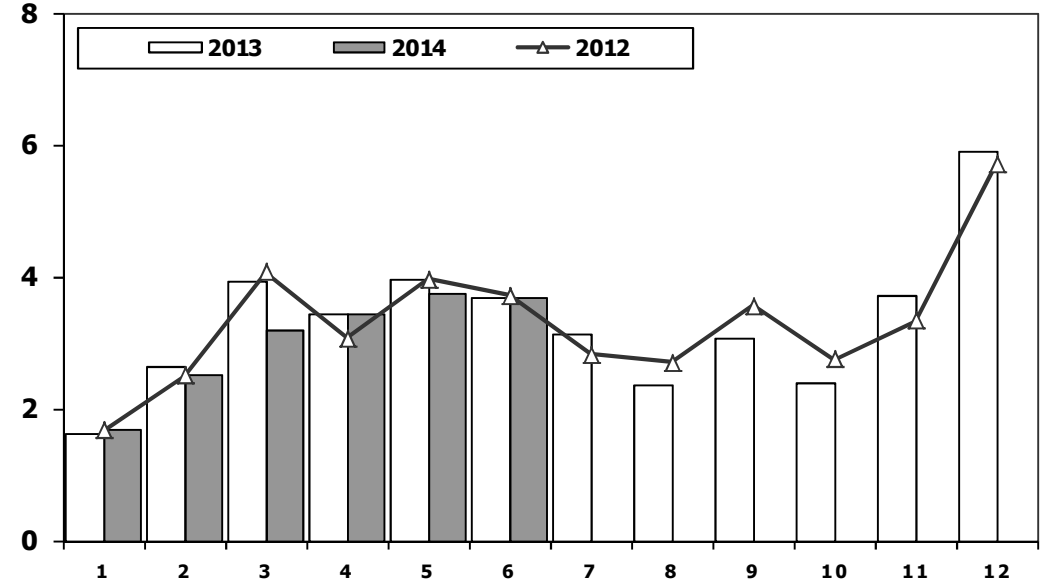
Ağır Ticari Araç Pazarının Analizi (x1000)

HCV Market Analysis (x1000)



Ağır Ticari Araç Pazarı (x1000)

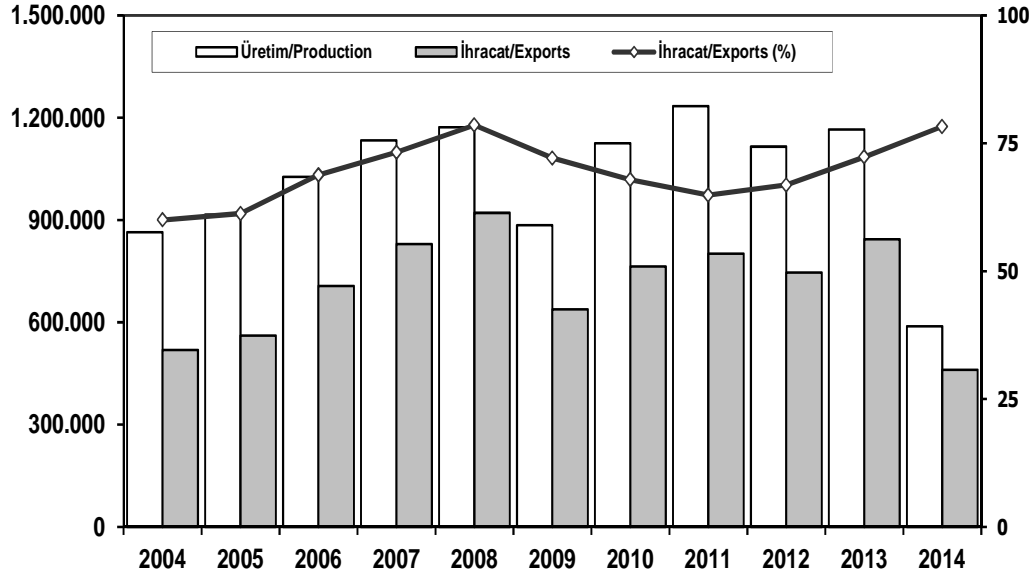
HCV Market (x1000)



Aylar / Months	10 Yıl Ort. 10 Yrs Avr. (x1000)	2013 (x1000)	%
1	1,8	1,7	-6,3
2	2,5	2,5	-0,8
3	3,5	3,2	-9,1
4	3,4	3,4	2,4
5	3,5	3,7	5,5
6	3,3	3,7	9,8
Total	18,1	18,2	0,8

	1	2	3	4	5	6	7	8	9	10	11	12	6 Ay/Mo	Total
2004	2.269	2.310	4.579	3.981	4.344	3.498	2.491	3.546	3.820	3.153	3.037	6.146	20.981	43.174
2005	1.940	2.525	3.795	4.029	4.026	3.583	2.832	4.636	4.626	4.153	4.355	7.629	19.898	48.129
2006	2.052	3.708	5.038	4.815	5.060	3.848	2.786	3.607	3.520	3.263	4.031	5.935	24.521	47.663
2007	1.833	2.518	3.598	3.267	3.317	2.987	2.627	3.613	3.497	3.333	3.704	5.150	17.520	39.444
2008	2.265	2.870	3.165	3.266	3.029	3.069	2.536	2.922	2.897	2.263	1.899	2.340	17.664	32.521
2009	1.025	1.104	1.420	1.786	1.696	2.035	1.401	1.483	2.006	1.084	1.240	2.463	9.066	18.743
2010	955	1.141	2.059	2.133	2.251	2.494	2.373	2.881	2.787	3.376	3.444	6.365	11.033	32.259
2011	2.766	3.685	4.930	4.376	4.447	4.290	2.320	2.972	3.514	3.219	3.538	6.371	24.494	46.428
2012	1.674	2.503	4.073	3.065	3.957	3.714	2.818	2.700	3.568	2.739	3.335	5.713	18.986	39.859
2013	1.617	2.624	3.914	3.440	3.953	3.675	3.130	2.340	3.074	2.385	3.716	5.878	19.223	39.746
2014	1.668	2.498	3.200	3.441	3.744	3.663	0	0	0	0	0	0	18.214	18.214

İhracat/Üretim (2004-2014) Exports/Production (2004-2014)



Taşıt Araçları İhracatı Motor Vehicle Exports

SEKTÖR/SECTOR	2012	2013	2013		2013/2014 (%)
			6 Ay-6 Mo		
OTOMOBİL/ P.Cars	412.991	484.504	233.032	296.156	27
TİCARİ ARAÇLAR / CV	316.932	343.967	187.825	156.435	-17
* Kamyonet/Pick-Up	292.601	300.765	166.936	142.274	-15
* Minibüs/Minibus	16.429	34.664	17.854	11.048	-38
* Kamyon/Truck	2.682	3.055	672	580	-14
* Midibüs/Midibus	1.173	985	487	454	-7
* Otobüs/Bus	4.047	4.498	1.876	2.079	11
TAŞIT ARAÇLARI /MV TOTAL	729.923	828.471	420.857	452.591	8
TRAKTÖR/F.TRACTOR	15.431	14.996	7.351	8.309	13
TOTAL	745.354	843.467	428.208	460.900	8

	2004	2005	2006	2007	2008	2009	2010	2011	2012	2013	2014
Üretim/Production	864.073	916.062	1.026.427	1.132.951	1.171.917	884.466	1.124.982	1.234.637	1.115.233	1.166.043	588.754
İhracat/Exports	518.595	561.078	706.402	829.879	920.763	637.855	763.670	801.112	745.354	843.467	460.900
İhracat/Exports (%)	60	61	69	73	79	72	68	65	67	72	78

Otomotiv Ana ve Yan Sanayii İhracatı (ABD \$) CBU and CKD Exports - \$

SEKTÖR/SECTOR	2011 Toplam (Total)	2012 Toplam (Total)	2013 Toplam (Total)	2013		2014/2013 (%)
				6 Ay (6 Months)		
Toplam Yan Sanayi/Total Component Industry	8.307.826.870	8.215.954.295	9.065.989.776	4.479.655.775	4.986.769.023	11
İç ve Dış Lastik / Tyres	1.373.205.546	1.199.572.093	1.130.088.420	569.314.940	611.293.889	7
Emniyet Camı / Safety Glasses	120.041.467	120.641.763	135.200.030	69.198.628	78.037.679	13
Motor (Engine)	273.896.369	272.085.582	319.294.885	168.339.891	93.054.806	-45
Akümülatör / Batteries	232.611.079	250.104.807	306.455.257	119.375.099	126.723.245	6
Diğer Aksam ve Parça / Spare Parts and Components	6.308.072.409	6.373.550.048	7.174.951.182	3.553.427.217	4.077.659.403	15
Toplam Ana Sanayi/Total Vehicle Industry	12.128.522.618	11.100.457.162	12.497.186.221	6.151.675.119	6.954.894.666	13
Otobüs / Bus	929.372.870	855.424.304	937.790.963	413.443.544	479.502.262	16
Midibüs-Minibüs / Minibus- Minibus	145.199.034	161.806.275	147.802.463	70.678.185	32.576.112	-54
Otomobil (P. Cars)	6.541.969.418	6.068.045.119	6.855.870.707	3.503.733.129	3.891.039.893	11
Kamyon-Kamyonet/HCV-LCV	4.034.772.621	3.433.310.999	3.919.399.958	1.887.833.165	2.211.283.691	17
Çekici/Truck-Tractor	116.912.332	71.336.635	77.907.407	102.976.538	122.189.252	19
Römork ve Yarı Römork/Trailer-Semi Trailer	147.247.613	195.093.537	218.649.302	15.641.281	23.279.964	49
Tarım Traktörü/Farm Tractor	213.048.730	315.440.294	339.765.421	157.369.275	195.023.493	24
Toplam/Total	20.436.349.488	19.316.411.457	21.563.175.997	10.631.330.893	11.941.663.689	12

Kaynak: Otomotiv Endüstrisi İhracatçıları Birliği

Firma Bazında İhracat (Adet)

Export Of member Companies (Unit)

FİRMALAR Companies	2012	2013	Ocak-Haziran 6 Months	
			2013	2014
OYAK RENAULT	227.162	266.508	142.979	131.436
FORD OTOSAN	191.149	208.722	117.076	92.556
HYUNDAI ASSAN	67.453	85.500	36.869	88.040
TOFAŞ	154.068	160.309	85.464	75.647
TOYOTA	63.549	86.908	28.358	61.346
TÜRK TRAKTÖR	14.572	14.402	7.079	7.712
M. BENZ TÜRK	4.054	5.331	1.650	1.507
HONDA TÜRKİYE	7.659	2.121	1.123	815
HATTAT TARIM	859	594	272	597
MAN TÜRKİYE	885	898	461	493
A.I.O.S.	943	770	411	394
OTOKAR	510	620	225	199
TEMSA GLOBAL	856	663	259	146
KARSAN	10.994	10.120	5.981	12
BMC	341	1	1	0
GENEL TOPLAM	745.054	843.467	428.208	460.900

Kaynak: OSD

Sektör Bazında İhracat (\$)

Exports on Sectorial Basis

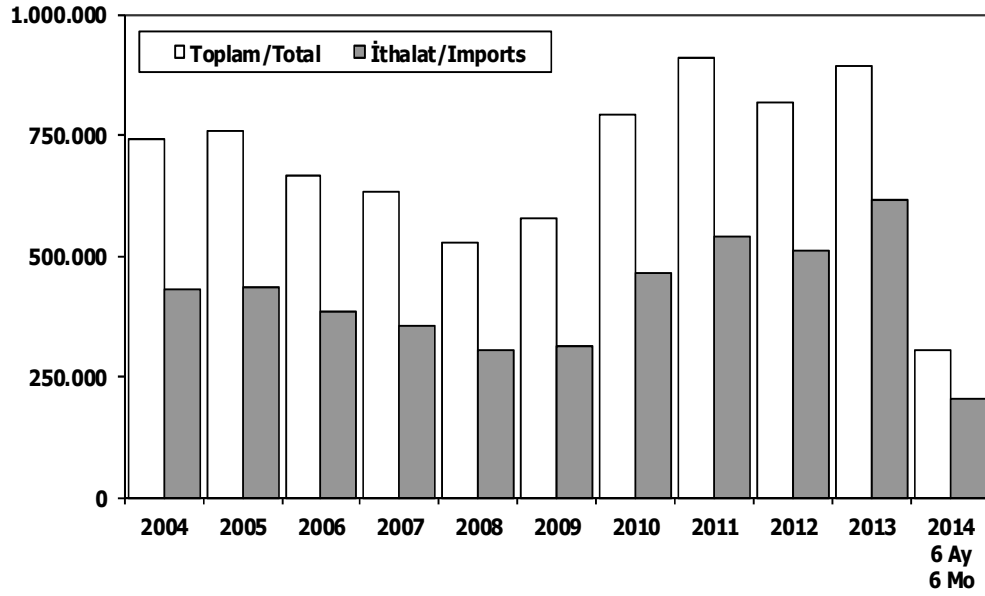
Sıra No	Sektörler	2013 Toplam	Ocak-Haziran			
			2013	2014	2014/2013 (%)	2014 (%) Pay
1	Otomotiv Endüstrisi *	19.063.427	10.542.676	11.717.709	11,1	14,7
2	Kimyevi Maddeler ve Mamülleri	16.088.099	8.515.983	8.896.246	4,5	11,1
3	Hazırgiyim ve Konfeksiyon	17.542.394	8.415.476	9.436.056	12,1	11,8
4	Çelik	15.563.898	7.418.318	7.021.235	-5,4	8,8
5	İhracatçı Birlikleri Kaydından Muaf İhracat	11.182.476	3.226.898	3.854.391	19,4	4,8
6	Elektrik-Elektronik ve Makina	7.849.702	5.440.961	6.003.371	10,3	7,5
7	Tekstil ve Hammaddeleri	6.367.209	4.159.554	4.521.967	8,7	5,7
8	Demir ve Demir Dışı Metaller	5.887.660	3.386.868	3.654.110	7,9	4,6
9	Hububat, Bakliyat, Yağlı Tohumlar	14.150.917	3.151.095	3.419.845	8,5	4,3
10	Makine ve Aksamları	5.327.524	2.863.999	3.023.773	5,6	3,8
11	Madencilik Ürünleri	4.181.526	2.503.104	2.371.617	-5,3	3,0
12	Ağaç Mamülleri, Orman Ürünleri	3.865.766	2.079.469	2.272.561	9,3	2,8
13	İklimlendirme Sanayi	3.797.942	1.998.153	2.266.196	13,4	2,8
14	Çimento ve Toprak Ürünleri	3.102.250	1.607.959	1.638.803	1,9	2,1
15	Yaş Meyve ve Sebze	2.083.084	1.096.611	1.146.177	4,5	1,4
16	Hali	2.011.941	1.064.142	1.145.878	7,7	1,4
17	Mücevher	2.184.807	1.065.776	1.150.397	7,9	1,4
18	Fındık ve Mamülleri	1.664.277	792.624	922.525	16,4	1,2
19	Deri ve Deri Mamülleri	1.605.069	845.564	883.696	4,5	1,1
20	Su Ürünleri ve Hayvansal Mamuller	1.805.461	942.740	1.138.228	20,7	1,4
21	Kuru Meyve ve Mamülleri	1.367.594	641.242	655.381	2,2	0,8
22	Gemi ve Yat	1.262.371	560.628	562.765	0,4	0,7
23	Savunma Sanayi	1.262.119	681.814	779.267	14,3	1,0
24	Meyve Sebze Mamülleri	811.246	598.513	682.760	14,1	0,9
25	Tütün ve Mamülleri	845.711	522.229	527.488	1,0	0,7
26	Zeytin ve Zeytinyağ	201.552	271.912	129.613	-52,3	0,2
27	Diğer Sanayi Ürünleri	82.451	58.988	61.147	3,7	0,1
28	Süs Bitkileri	73.177	44.901	52.127	16,1	0,1
TOPLAM		151.860.946	74.498.197	79.935.329	7,3	100,0

Kaynak: TİM

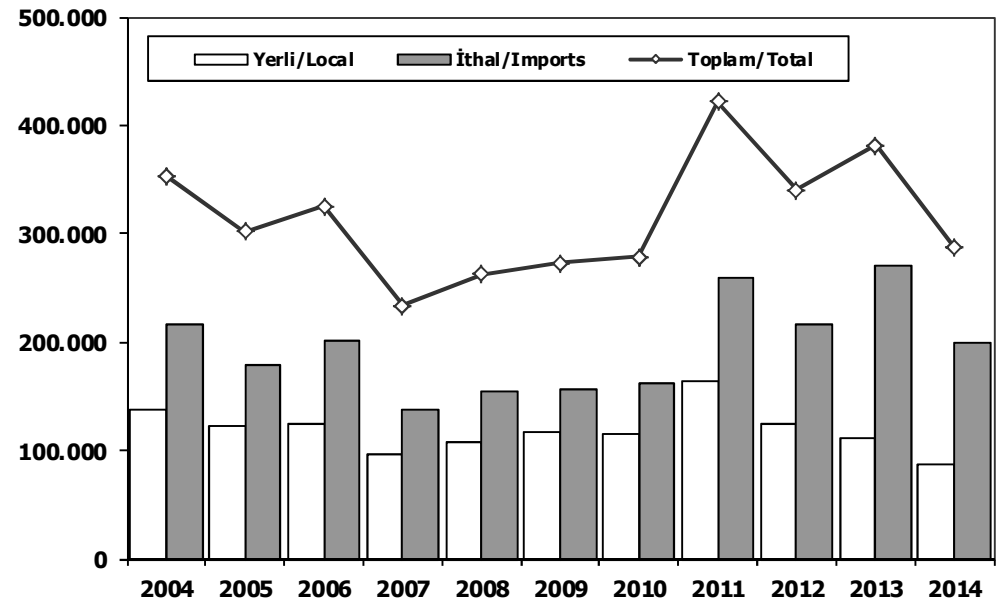
First 5 Sectors:

- 1- Transport Vehicle and Component Industry
- 2- Chemical Articles and Products
- 3-Ready Wear and Confection
- 4-Iron Steel Products
- 5-Electric-Electronic and Machine

Toplam Pazar (Otomobil+T.Araç) Total Market (P.Cars+C.V)



Hafif Araçlar Pazarı (2004-2014 Ocak-Haziran) LV Market (2004-2014 January-June)

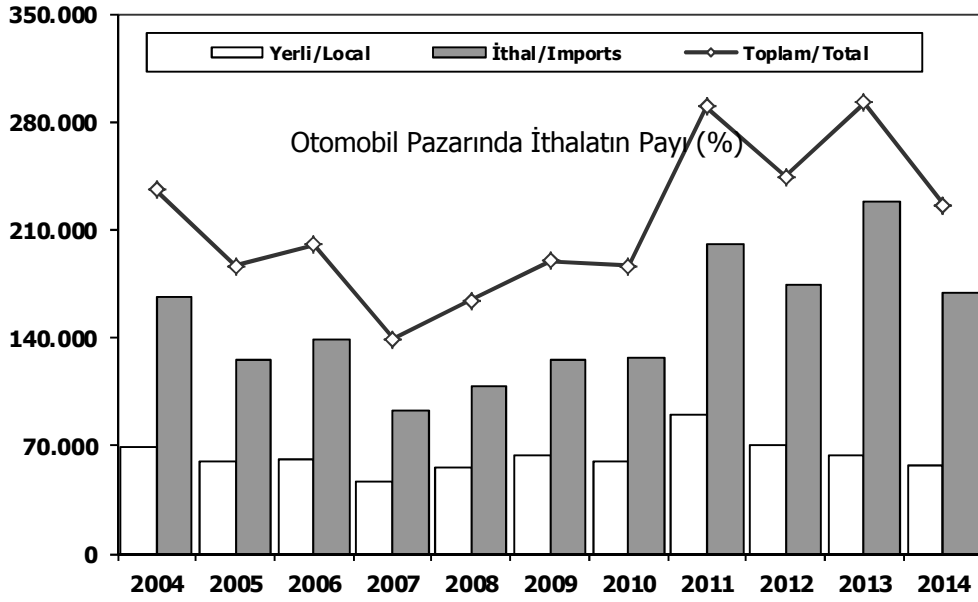


	2004	2005	2006	2007	2008	2009	2010	2011	2012	2013	2013 6 Ay 6 Mo	2014 6 Ay 6 Mo
Toplam/Total	741.269	758.537	665.515	634.206	526.544	575.869	793.172	910.867	817.620	893.124	400.966	305.075
İthal/Imports	430.204	436.033	382.460	355.752	306.087	313.921	465.408	538.532	511.694	615.609	275.617	204.514
İthal/Imports (%)	58	57	57	56	58	55	59	59	63	69	69	67

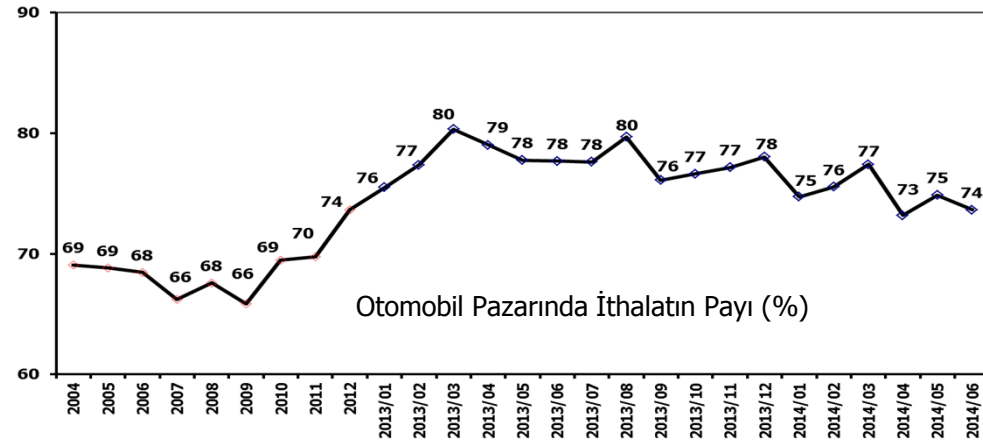
	2004	2005	2006	2007	2008	2009	2010	2011	2012	2013	2014
Yerli/Local	137.819	122.618	123.663	96.377	108.441	116.483	115.458	162.944	124.724	110.647	87.190
İthal/Imports	215.851	179.599	201.866	136.792	154.609	156.874	162.797	258.928	215.908	271.096	199.671
Toplam/Total	353.670	302.217	325.529	233.169	263.050	273.357	278.255	421.872	340.632	381.743	286.861
İthal/Imports (%)	61	59	62	59	59	57	59	61	63	71	70

Otomobil Pazarı (2004-2014 Ocak-Haziran)

P.Cars Market (2004-2014 January-June)

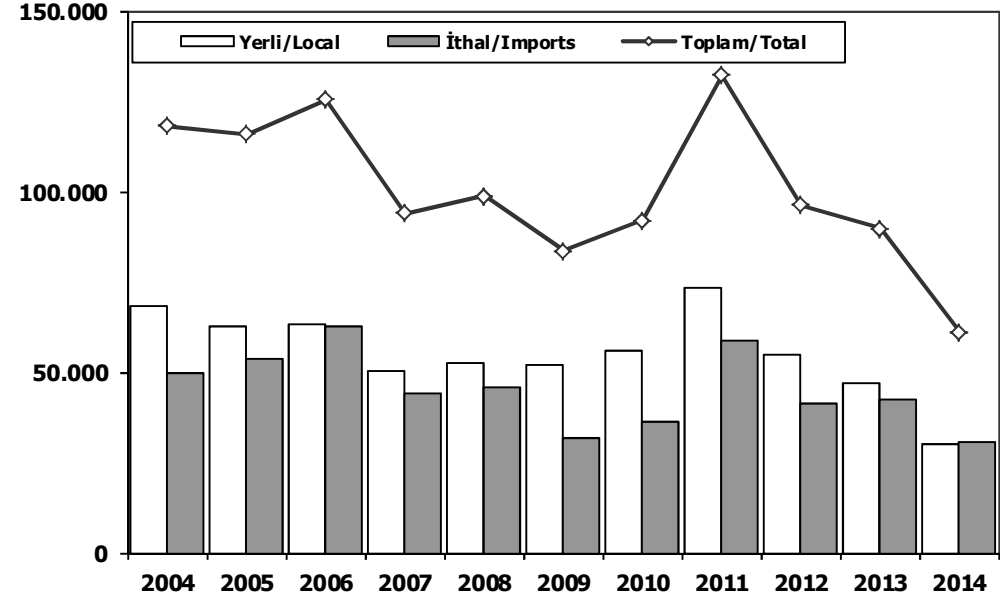


	2004	2005	2006	2007	2008	2009	2010	2011	2012	2013	2014
Yerli/Local	69.438	60.155	60.666	46.237	55.727	64.339	59.686	89.601	69.994	63.686	56.924
İthal/Imports	166.233	126.167	139.445	92.894	108.718	125.357	126.619	200.145	174.496	228.420	168.849
Toplam/Total	235.671	186.322	200.111	139.131	164.445	189.696	186.305	289.746	244.490	292.106	225.773
İthalat/Imports (%)	71	68	70	67	66	66	68	69	71	78	75

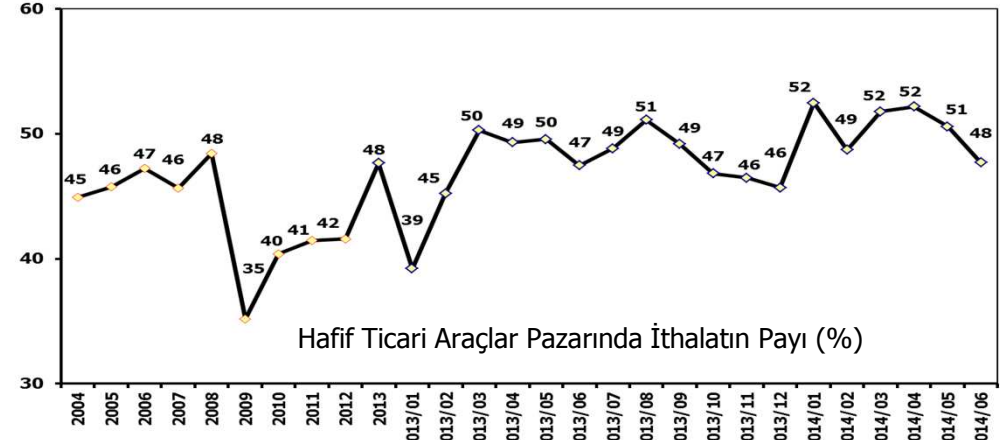


Hafif Ticari Araçlar Pazarı (2004-2014 Ocak-Haziran)

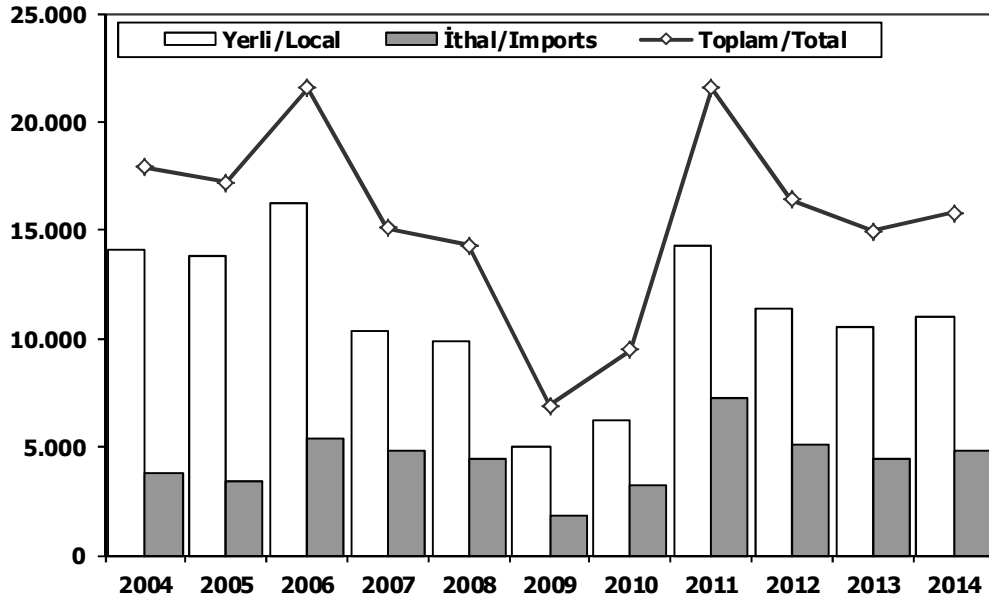
Light Commercial Vehicle Market (2004-2014 January-June)



	2004	2005	2006	2007	2008	2009	2010	2011	2012	2013	2014
Yerli/Local	68.381	62.463	62.997	50.140	52.714	52.144	55.772	73.343	54.730	46.961	30.266
İthal/Imports	49.618	53.432	62.421	43.898	45.891	31.517	36.178	58.783	41.412	42.676	30.822
Toplam/Total	117.999	115.895	125.418	94.038	98.605	83.661	91.950	132.126	96.142	89.637	61.088
İthalat/Imports (%)	42	46	50	47	47	38	39	44	43	48	50

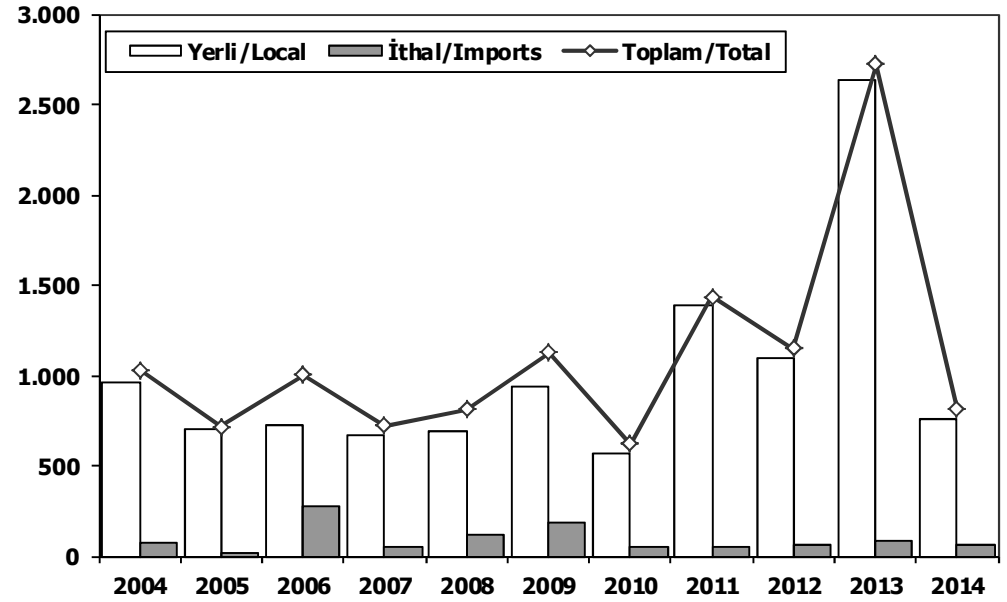


Ağır Ticari Araçlar Pazarı (2004-2014 Ocak-Haziran) HCV Market (2004-2014 January-June)



	2004	2005	2006	2007	2008	2009	2010	2011	2012	2013	2014
Yerli/Local	17.083	16.469	18.904	12.688	13.128	7.022	7.704	17.182	13.868	14.702	13.371
İthal/Imports	3.898	3.429	5.617	4.832	4.536	2.044	3.329	7.312	5.118	4.521	4.843
Toplam/Total	20.981	19.898	24.521	17.520	17.664	9.066	11.033	24.494	18.986	19.223	18.214
İthalat/Imports (%)	19	17	23	28	26	23	30	30	27	24	27

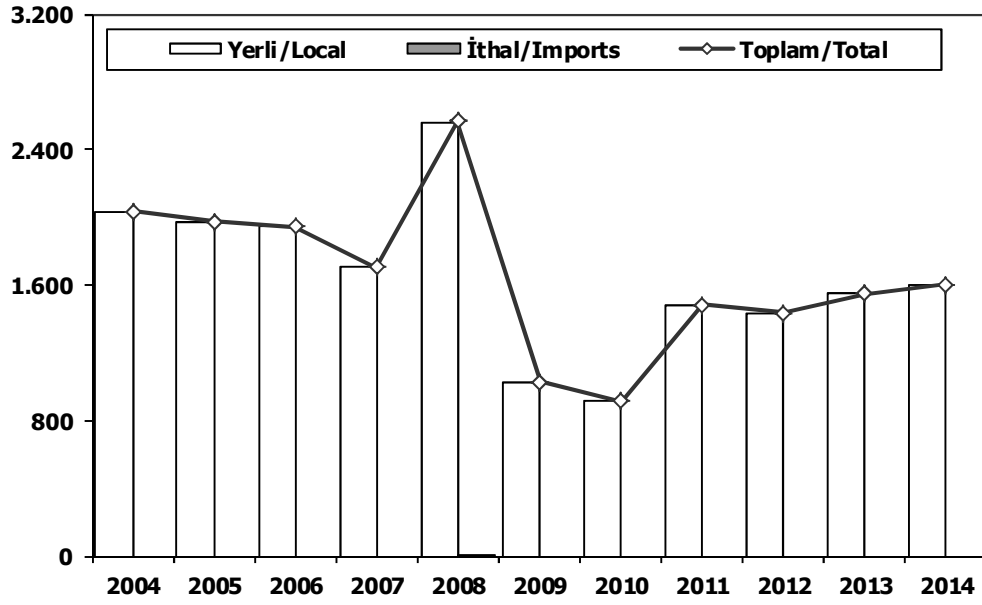
Otobüs Pazarı (2004-2014 Ocak-Haziran) Bus Market (2004-2014 January-June)



	2004	2005	2006	2007	2008	2009	2010	2011	2012	2013	2014
Yerli/Local	961	698	729	673	688	943	568	1.389	1.092	2.639	753
İthal/Imports	72	16	276	49	121	181	54	47	59	85	60
Toplam/Total	1.033	714	1.005	722	809	1.124	622	1.436	1.151	2.724	813
İthalat/Imports (%)	7	2	27	7	15	16	9	3	5	3	7

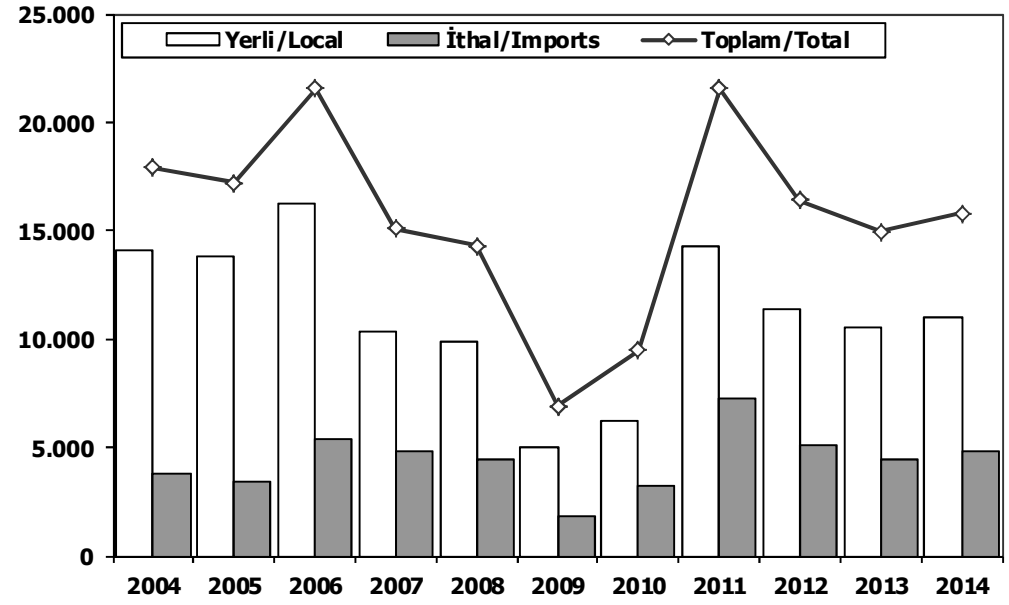
Midibüs Pazarı (2004-2014 Ocak-Haziran) (7-9 mt/25-35 Kişilik)

Midibus Market (2004-2014 January-June) (7-9 mt/25-35 Passengers)



Kamyon Pazarı (2004-2014 Ocak-Haziran)

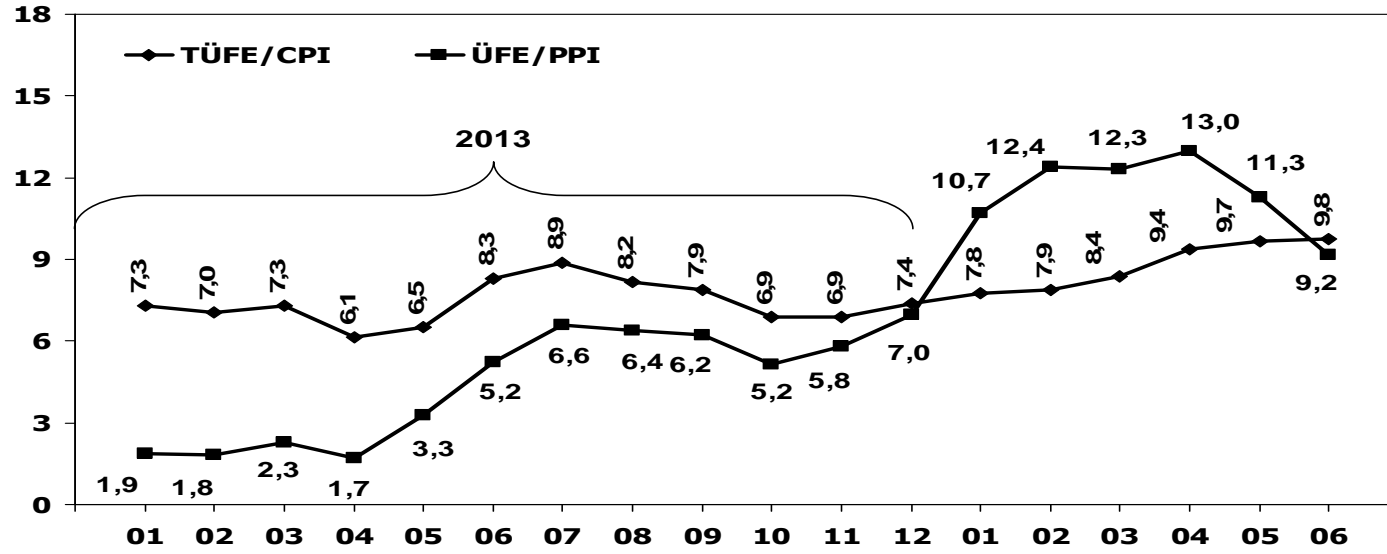
Truck Market (2004-2014 January-June)



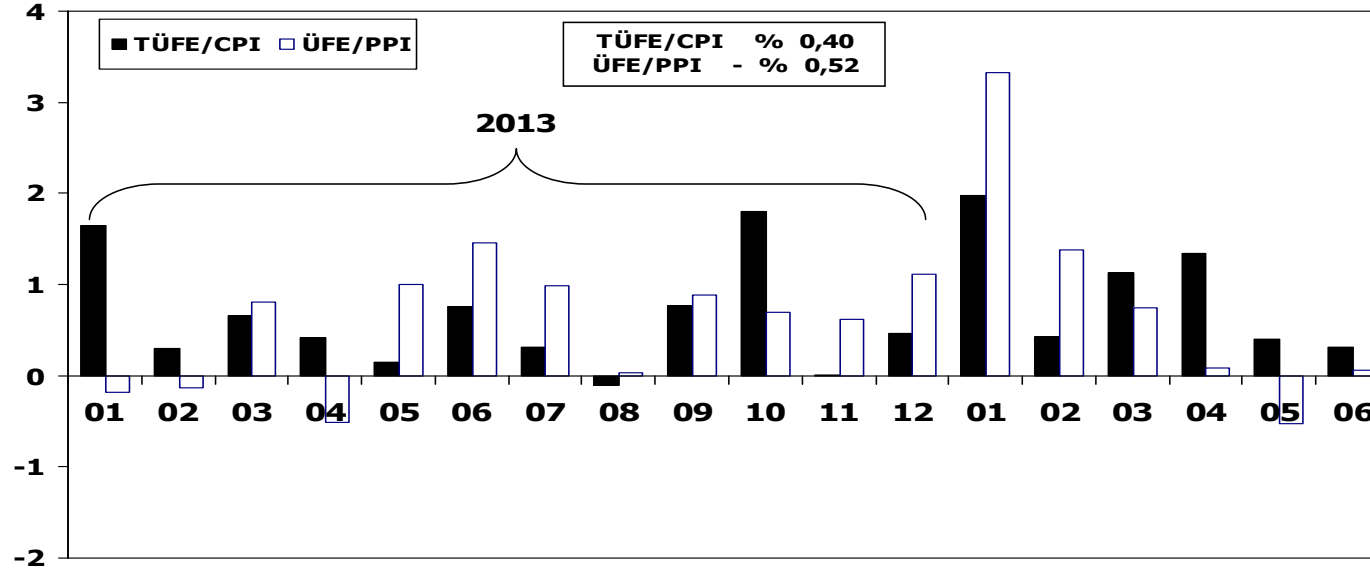
	2004	2005	2006	2007	2008	2009	2010	2011	2012	2013	2014
Yerli/Local	2.032	1.973	1.945	1.706	2.554	1.030	916	1.481	1.438	1.548	1.604
İthal/Imports	0	0	0	0	11	0	0	0	0	0	0
Toplam/Total	2.032	1.973	1.945	1.706	2.565	1.030	916	1.481	1.438	1.548	1.604
İthalat/Imports (%)	0	0	0	0	0	0	0	0	0	0	0

	2004	2005	2006	2007	2008	2009	2010	2011	2012	2013	2014
Yerli/Local	14.090	13.798	16.230	10.309	9.886	5.049	6.220	14.303	11.338	10.515	11.014
İthal/Imports	3.826	3.413	5.341	4.783	4.404	1.863	3.275	7.265	5.059	4.436	4.783
Toplam/Total	17.916	17.211	21.571	15.092	14.290	6.912	9.495	21.568	16.397	14.951	15.797
İthalat/Imports (%)	21	20	25	32	31	27	34	34	31	30	30

TÜFE ve ÜFE'nin Yıllık Değişimi (%) CPI and PPI Yearly Changes (%)



TÜFE ve ÜFE'nin Aylık Değişimi (%) CPI and PPI Monthly Changes (%)



2014 Yılı İthal Hafif Araç Satışları 2014 Light Vehicles Import Sales

2014 YILI İTHAL OTOMOBİL SATIŞLARI / P.Cars Import 2014

	2013 TOPLAMI 2013 Total	1	2	3	4	5	6	7	8	9	10	11	12	2014 TOPLAMI 2014 Total
VOLKSWAGEN	88.304	4.242	5.080	6.247	7.025	7.193	6.026	0	0	0	0	0	0	35.813
OPEL	55.719	1.672	1.374	2.316	2.833	3.346	3.431	0	0	0	0	0	0	14.972
RENAULT	32.904	1.719	1.616	2.101	1.842	2.121	1.629	0	0	0	0	0	0	11.028
FORD	58.405	1.389	1.244	1.621	2.400	2.866	3.658	0	0	0	0	0	0	13.178
DACIA	28.901	1.158	1.229	1.854	1.586	1.883	2.274	0	0	0	0	0	0	9.984
NISSAN	18.417	741	1.603	2.355	1.237	1.181	985	0	0	0	0	0	0	8.102
HYUNDAI	29.824	982	1.125	1.362	1.675	1.861	1.986	0	0	0	0	0	0	8.591
MERCEDES	20.023	582	900	1.783	1.619	2.083	2.512	0	0	0	0	0	0	9.479
B. M. W	20.705	334	617	1.875	1.852	1.938	2.076	0	0	0	0	0	0	8.692
AUDI	14.987	455	750	1.175	1.391	1.598	1.255	0	0	0	0	0	0	6.624
PEUGEOT	23.068	622	871	1.258	1.208	1.324	1.999	0	0	0	0	0	0	7.282
SKODA	12.833	458	632	747	907	1.578	1.200	0	0	0	0	0	0	5.522
CITROEN	19.690	657	715	790	1.062	1.040	888	0	0	0	0	0	0	5.152
KIA	13.195	483	462	694	733	775	944	0	0	0	0	0	0	4.091
SEAT	11.065	536	352	524	762	811	959	0	0	0	0	0	0	3.944
TOYOTA	22.421	366	363	512	682	647	576	0	0	0	0	0	0	3.146
FIAT	10.913	587	313	306	553	723	718	0	0	0	0	0	0	3.200
VOLVO	5.021	252	256	412	509	525	501	0	0	0	0	0	0	2.455
HONDA	3.394	142	257	285	455	161	105	0	0	0	0	0	0	1.405
CHEVROLET	12.506	206	161	134	29	8	14	0	0	0	0	0	0	552
SUBARU	1.101	120	70	116	91	108	124	0	0	0	0	0	0	629
LAND ROVER	1.323	26	52	142	95	144	94	0	0	0	0	0	0	553
MINI (İngiliz)	1.557	51	51	150	45	73	56	0	0	0	0	0	0	426
SUZUKI	1.623	76	68	98	99	179	115	0	0	0	0	0	0	635
MITSUBISHI	1.488	83	81	53	70	65	62	0	0	0	0	0	0	414
MAZDA	1.377	30	40	69	133	57	170	0	0	0	0	0	0	499
PROTON	715	110	22	24	74	80	50	0	0	0	0	0	0	360
ALFA ROMEO	1.030	60	26	32	44	147	150	0	0	0	0	0	0	459
JEEP	973	31	66	64	71	46	63	0	0	0	0	0	0	341
PORSCHE	517	45	31	27	41	41	41	0	0	0	0	0	0	226
SSANGYONG	972	44	16	38	52	30	57	0	0	0	0	0	0	237
LANCIA	782	8	31	44	69	17	18	0	0	0	0	0	0	187
CHERY	492	17	16	34	34	53	35	0	0	0	0	0	0	189
GEEELY	623	12	5	9	8	3	10	0	0	0	0	0	0	47
MASERATI	40	6	8	9	4	5	4	0	0	0	0	0	0	36
SMART	110	4	5	8	8	5	8	0	0	0	0	0	0	38
JAGUAR	97	0	8	3	5	2	8	0	0	0	0	0	0	26
FERRARI	23	0	3	2	0	2	0	0	0	0	0	0	0	7
BENTLEY	21	0	2	1	0	2	1	0	0	0	0	0	0	6
INFINITI	37	1	0	1	0	1	0	0	0	0	0	0	0	3
LAMBORGHINI	4	0	1	0	0	0	0	0	0	0	0	0	0	1
TATA	326	1	0	0	0	0	17	0	0	0	0	0	0	18
TOPLAM	517.526	18.208	20.522	29.275	31.303	34.722	34.819	0	0	0	0	0	0	168.849

2014 YILI İTHAL HAFİF TİCARİ ARAÇ SATIŞLARI / Light Commercial Vehicles Import 2014

	2013 TOPLAMI 2013 Total	1	2	3	4	5	6	7	8	9	10	11	12	2014 TOPLAMI 2014 Total
VOLKSWAGEN	23.752	1.152	1.144	1.365	1.779	1.956	2.004	0	0	0	0	0	0	9.400
RENAULT	11.550	565	431	556	484	613	666	0	0	0	0	0	0	3.315
MERCEDES	10.421	490	389	712	456	493	658	0	0	0	0	0	0	3.198
FIAT	6.245	397	455	414	557	514	424	0	0	0	0	0	0	2.761
DACIA	7.494	510	400	315	340	427	409	0	0	0	0	0	0	2.401
CITROEN	6.679	234	103	318	386	448	666	0	0	0	0	0	0	2.155
PEUGEOT	8.323	78	105	249	445	539	438	0	0	0	0	0	0	1.854
MITSUBISHI	3.592	229	180	201	266	196	168	0	0	0	0	0	0	1.240
ISUZU	2.587	228	138	174	177	190	123	0	0	0	0	0	0	1.030
TOYOTA	2.413	139	105	349	116	66	83	0	0	0	0	0	0	858
IVECO	2.204	77	127	212	181	168	189	0	0	0	0	0	0	954
HYUNDAI	1.480	117	86	73	117	126	67	0	0	0	0	0	0	586
KIA	453	47	44	62	102	114	158	0	0	0	0	0	0	527
SSANGYONG	859	63	55	11	33	31	43	0	0	0	0	0	0	236
TATA	316	20	34	16	29	27	16	0	0	0	0	0	0	142
NISSAN	878	9	2	20	13	20	19	0	0	0	0	0	0	83
FORD	657	1	23	12	16	7	14	0	0	0	0	0	0	73
MAZDA	3	0	5	0	0	3	1	0	0	0	0	0	0	9
TOPLAM	89.906	4.356	3.826	5.059	5.497	5.938	6.146	0	0	0	0	0	0	30.822