



OTOMOTİV SANAYİ DERNEĞİ  
AUTOMOTIVE MANUFACTURERS ASSOCIATION

# AYLIK RAPOR

## Automotive Industry Monthly Report

Mayıs / May 2015

- Üretim/Production
- Satış/Sales
- İthalat/Imports
- İhracat/Exports

OSD "OICA" Üyesidir



OSD is a Member of "OICA"

## 2015 Mayıs Ayı Özeti / 2015 May Summary

KONULAR/MATTERS		MAYIS / MAY			5 AY/ 5 MONTHS			SON 12 AYLIK / YoY		
		2014	2015	2015/2014 (%)	2014	2015	2015/2014 (%)	2014	2015	2015/2014 (%)
Üretim/ Production	Toplam/ Total	101.495	88.069	-13	455.976	543.213	19	1.114.138	1.257.682	13
	Otomobil/ P.Cars	63.658	52.339	-18	293.878	318.049	8	679.688	757.610	11
Pazar/ Market	Toplam/ Total	61.909	85.154	38	241.172	364.960	51	811.101	931.274	15
	Otomobil/ P.Cars	46.379	62.878	36	178.495	260.080	46	609.334	668.916	10
İthalat/ Import	Toplam/ Total	41.757	58.535	40	162.455	234.035	44	556.104	594.422	7
	Otomobil/ P.Cars	34.722	50.385	45	134.030	193.372	44	468.419	489.324	4
İhracat/ Export	Toplam/ Total	81.918	59.098	-28	367.607	393.656	7	845.362	911.229	8
	Otomobil/ P.Cars	52.296	36.570	-30	244.649	247.301	1	533.572	584.645	10
İhracat / Export (\$)	Toplam/ Total **	2.082.845.585	1.508.105.847	-28	9.850.105.653	8.690.662.802	-12	22.603.512.846	21.634.983.131	-4
	Otomobil/ P.Cars	668.840.100	443.499.108	-34	3.197.552.167	2.859.149.016	-11	7.147.626.945	6.906.181.913	-3

PARAMETRELER / PARAMETERS		MAYIS / MAY			5 AY/ 5 MONTHS			SON 12 AYLIK / YoY		
		2014	2015	2015/2014 (%)	2014	2015	2015/2014 (%)	2014	2015	2015/2014 (%)
ÜFE/ PPI		0,52	1,11	**	5,06	5,22	**	11,28	6,52	**
TÜFE/ CPI		0,40	0,56	**	5,38	5,30	**	9,66	8,09	**
Sanayi Endeksi/ Industry Index		-0,20	1,53	**	6,27	5,74	**	13,35	7,09	**
\$ (*)		2,0954	2,6568	27	2,1719	2,5688	18	2,0760	2,3566	14
EURO (*)		2,8522	2,9126	2	2,9764	2,8475	-4	2,8156	2,8376	1
Japon Yeni (*)		2,0663	2,1341	3	2,1246	2,1295	0	2,0509	2,0578	0

(\*) Ortalama Değerler / Average Values

(\*\*) Toplam Sanayi / Total Industry Including Components

## 5 Aylık Üretim (5 Months Production)

FİRMALAR Companies	OTOMOBİL Pass.Car	%	K.KAMYON L.Truck	%	B.KAMYON Mid.Truck	%	KAMYONET Pick Up	%	OTOBÜS Bus	%	MİNİBÜS Mini-Bus	%	MİDİBÜS Midi-Bus	%	TRAKTÖR F.Tractor	%	TOPLAM Totals
A.I.O.S.	0	0	1.415	92	72	1	1.692	1	128	4	0	0	749	28	0	0	4.056
FORD OTOSAN	7.710	2	0	0	4.274	32	91.703	52	0	0	28.219	97	0	0	0	0	131.906
HATTAT TARIM	0	0	0	0	0	0	0	0	0	0	0	0	0	0	1.247	6	1.247
HONDA TÜRKİYE	5.441	2	0	0	0	0	0	0	0	0	0	0	0	0	0	0	5.441
HYUNDAI ASSAN	92.600	29	0	0	0	0	0	0	0	0	0	0	0	0	0	0	92.600
KARSAN	0	0	0	0	0	0	531	0	4	0	742	3	229	9	0	0	1.506
M. BENZ TÜRK	0	0	0	0	9.055	68	0	0	1.783	52	0	0	0	0	0	0	10.838
MAN TÜRKİYE	0	0	0	0	0	0	0	0	824	24	0	0	0	0	0	0	824
OTOKAR	0	0	126	8	0	0	90	0	187	5	0	0	1.013	38	0	0	1.416
OYAK RENAULT	135.025	42	0	0	0	0	0	0	0	0	0	0	0	0	0	0	135.025
TEMSA GLOBAL	0	0	0	0	0	0	0	0	527	15	0	0	648	25	0	0	1.175
TOFAŞ	28.830	9	0	0	0	0	81.153	46	0	0	0	0	0	0	0	0	109.983
TOYOTA	48.443	15	0	0	0	0	0	0	0	0	0	0	0	0	0	0	48.443
TÜRK TRAKTÖR	0	0	0	0	0	0	0	0	0	0	0	0	0	0	18.712	94	18.712
<b>TOPLAM</b>	<b>318.049</b>	<b>100</b>	<b>1.541</b>	<b>100</b>	<b>13.401</b>	<b>100</b>	<b>175.169</b>	<b>100</b>	<b>3.453</b>	<b>100</b>	<b>28.961</b>	<b>100</b>	<b>2.639</b>	<b>100</b>	<b>19.959</b>	<b>100</b>	<b>563.172</b>

## Mayıs Ayı Üretimi (May Production)

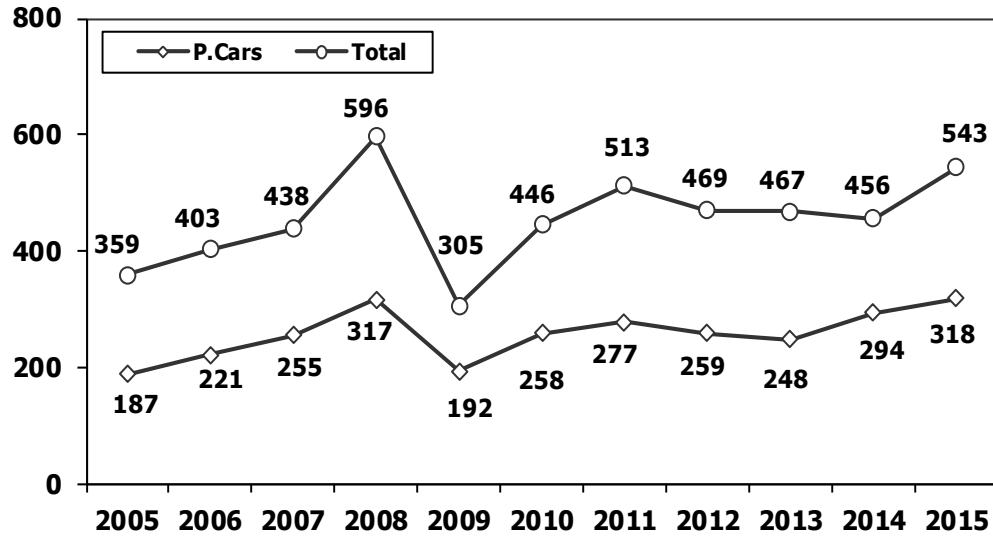
FİRMALAR Companies	OTOMOBİL Pass.Car	%	K.KAMYON L.Truck	%	B.KAMYON Mid.Truck	%	KAMYONET Pick Up	%	OTOBÜS Bus	%	MİNİBÜS Mini-Bus	%	MİDİBÜS Midi-Bus	%	TRAKTÖR F.Tractor	%	TOPLAM Totals
A.I.O.S.	0	0	379	92	21	1	382	1	34	4	0	0	151	29	0	0	967
FORD OTOSAN	1.366	3	0	0	619	24	12.249	46	0	0	4.654	96	0	0	0	0	18.888
HATTAT	0	0	0	0	0	0	0	0	0	0	0	0	0	0	364	11	364
HONDA TÜRKİYE	1.139	2	0	0	0	0	0	0	0	0	0	0	0	0	0	0	1.139
HYUNDAI ASSAN	19.400	37	0	0	0	0	0	0	0	0	0	0	0	0	0	0	19.400
KARSAN	0	0	0	0	0	0	482	2	0	0	178	4	61	12	0	0	721
M. BENZ TÜRK	0	0	0	0	1.951	75	0	0	427	56	0	0	0	0	0	0	2.378
MAN TÜRKİYE	0	0	0	0	0	0	0	0	143	19	0	0	0	0	0	0	143
OTOKAR	0	0	34	8	0	0	57	0	65	9	0	0	162	31	0	0	318
OYAK RENAULT	16.301	31	0	0	0	0	0	0	0	0	0	0	0	0	0	0	16.301
TEMSA	0	0	0	0	0	0	0	0	88	12	0	0	141	27	0	0	229
TOFAŞ	5.241	10	0	0	0	0	13.452	51	0	0	0	0	0	0	0	0	18.693
TOYOTA	8.892	17	0	0	0	0	0	0	0	0	0	0	0	0	0	0	8.892
TÜRK TRAKTÖR	0	0	0	0	0	0	0	0	0	0	0	0	0	0	2.864	89	2.864
<b>TOPLAM</b>	<b>52.339</b>	<b>100</b>	<b>413</b>	<b>100</b>	<b>2.591</b>	<b>100</b>	<b>26.622</b>	<b>100</b>	<b>757</b>	<b>100</b>	<b>4.832</b>	<b>100</b>	<b>515</b>	<b>100</b>	<b>3.228</b>	<b>100</b>	<b>91.297</b>

## 2014/2015 Yılları Üretim 2014/2015 Production

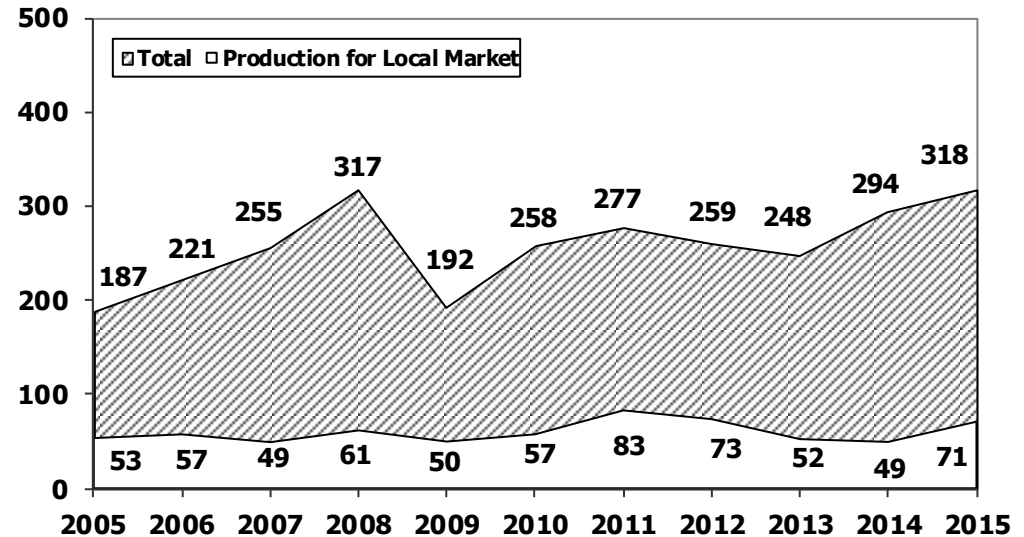
K.KAMYON : AYA 3.5-12 Ton (L.Truck:GVW 3.5-12 Ton)  
B.KAMYON : AYA 12 Ton'dan Büyük (M.Truck:GVW 12 Ton And Up)

TİPLER	MAYIS AYI ÜRETİMİ May Production		5 AYLIK ÜRETİM 5 Months Production		DEĞİŞİM % Percent Change %	
	2014	2015	2014	2015	MAYIS May	5 AY 5 Months
<b>OTOMOBİL - Pass.Car</b>	<b>63.658</b>	<b>52.339</b>	<b>293.878</b>	<b>318.049</b>	<b>-18</b>	<b>8</b>
<b>TİCARİ ARAÇLAR - Commercial Vehicles</b>	<b>37.837</b>	<b>35.730</b>	<b>162.098</b>	<b>225.164</b>	<b>-6</b>	<b>39</b>
* B. KAMYON - M. Truck	2.333	2.591	10.180	13.401	11	32
* K. KAMYON - L. Truck	278	413	1.392	1.541	49	11
* KAMYONET - Pick Up	31.019	26.622	132.772	175.169	-14	32
* OTOBÜS - Bus	561	757	2.830	3.453	35	22
* MİNİBÜS - Minibus	3.192	4.832	12.260	28.961	51	136
* MİDİBÜS - Midibus	454	515	2.664	2.639	13	-1
<b>TAŞIT ARAÇLARI TOPLAM - MV Total</b>	<b>101.495</b>	<b>88.069</b>	<b>455.976</b>	<b>543.213</b>	<b>-13</b>	<b>19</b>
<b>TRAKTÖR - F.Tractor</b>	<b>4.150</b>	<b>3.228</b>	<b>20.250</b>	<b>19.959</b>	<b>-22</b>	<b>-1</b>
<b>GENEL TOPLAM - Grand Total</b>	<b>105.645</b>	<b>91.297</b>	<b>476.226</b>	<b>563.172</b>	<b>-14</b>	<b>18</b>

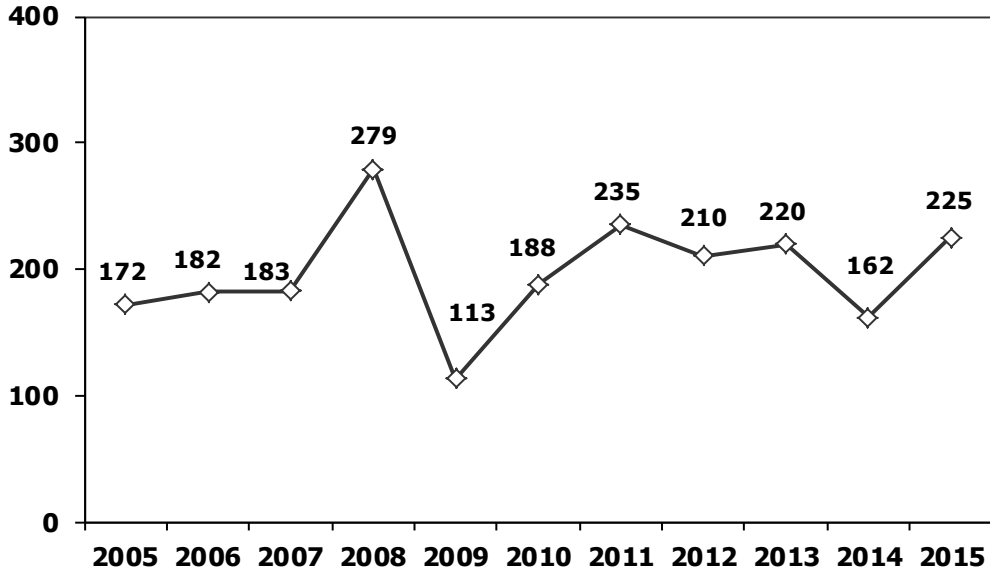
**Toplam Üretim ve Otomobil Üretimi (x1000) (Ocak-Mayıs)**  
Total & P.Cars Production (x1000) (January- May)



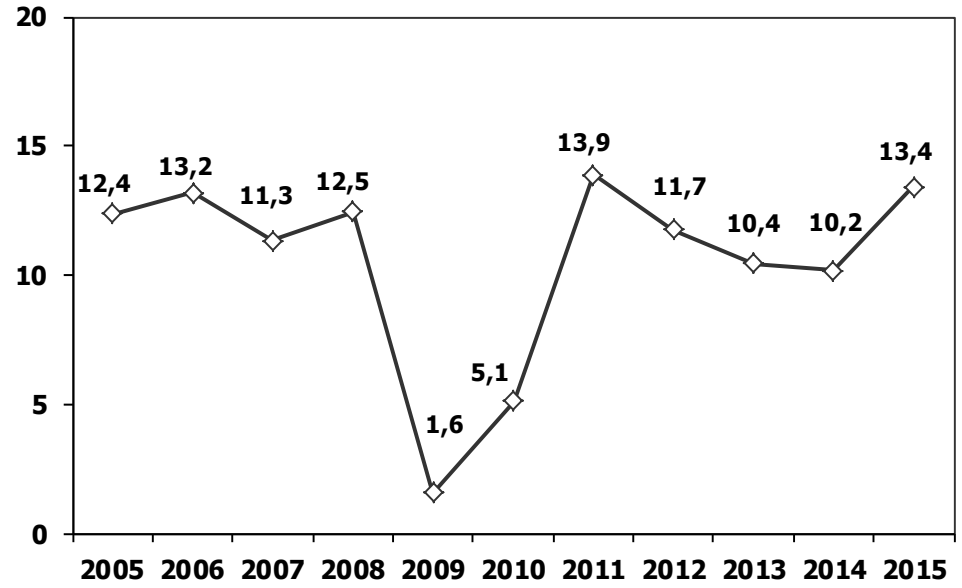
**Otomobil Üretimi ve İhracat (x1000) (Ocak-Mayıs)**  
P.Cars Production & Exports (x1000) (January- May)



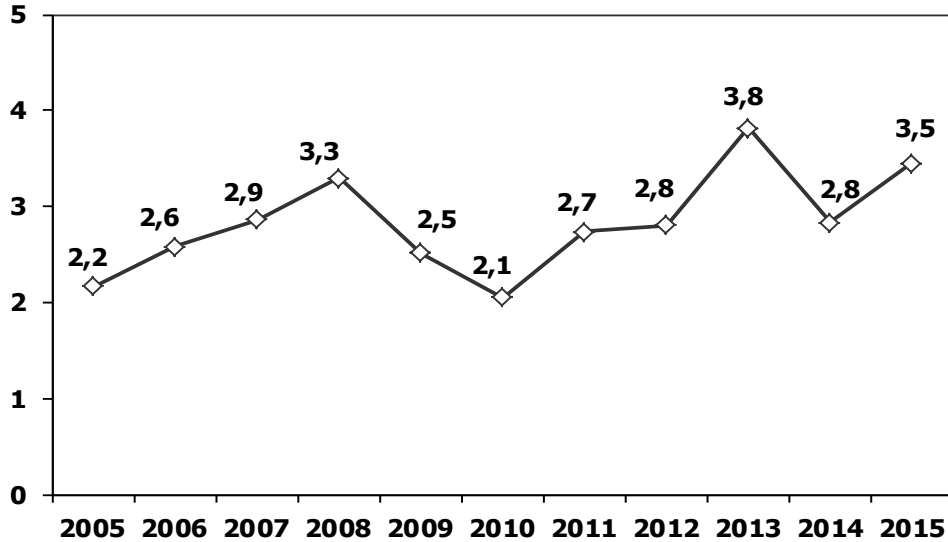
**Ticari Araç Üretimi (x1000) (Ocak-Mayıs)**  
Commercial Vehicle Production (x1000) (January- May)



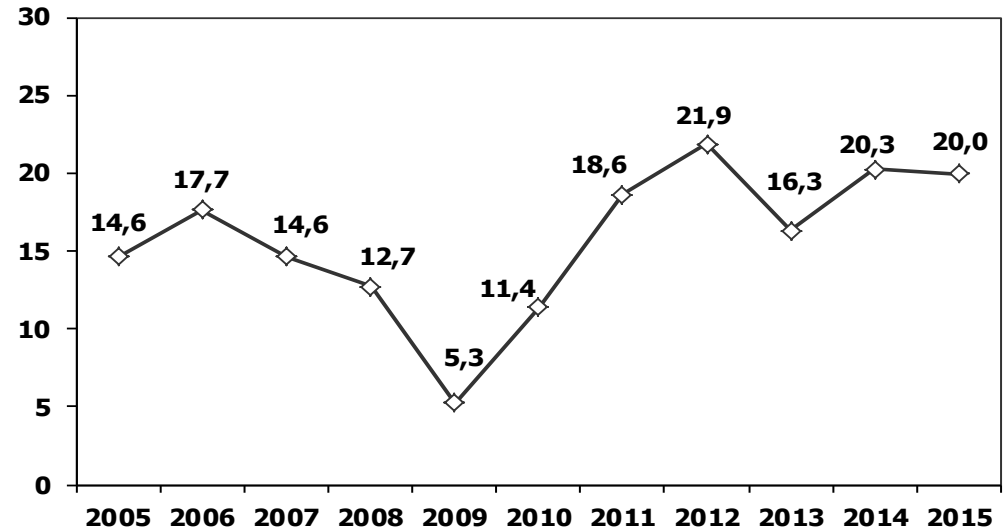
**(AYA >12 Ton) Büyük Kamyon Üretimi (x1000) (Ocak-Mayıs)**  
(GVW >12 Ton) Heavy Truck Production (x1000) (January- May)



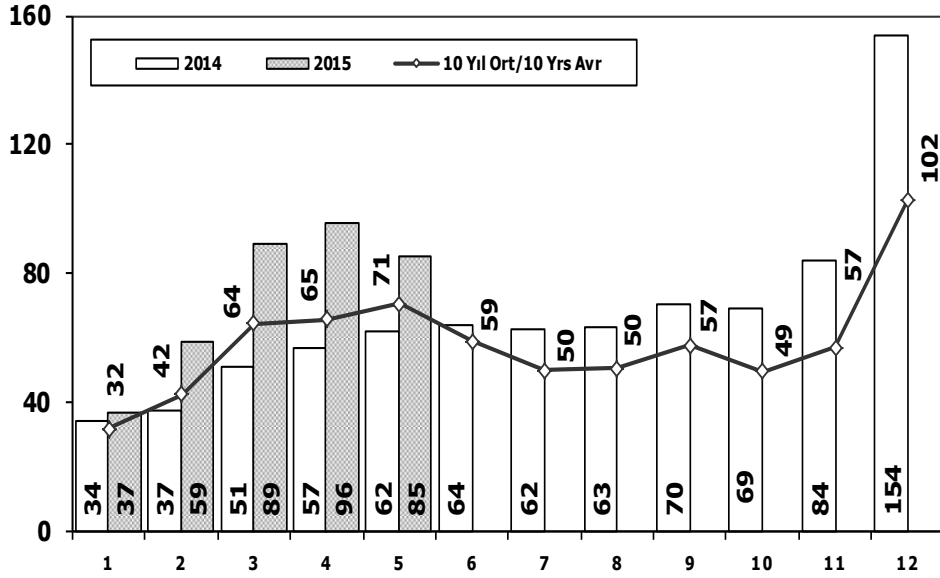
**Otobüs Üretimi (x1000) (Ocak-Mayıs)**  
Bus Production (x1000) (January- May)



**Traktör Üretimi (x1000) (Ocak-Mayıs)**  
F. Tractor Production (x1000) (January- May)

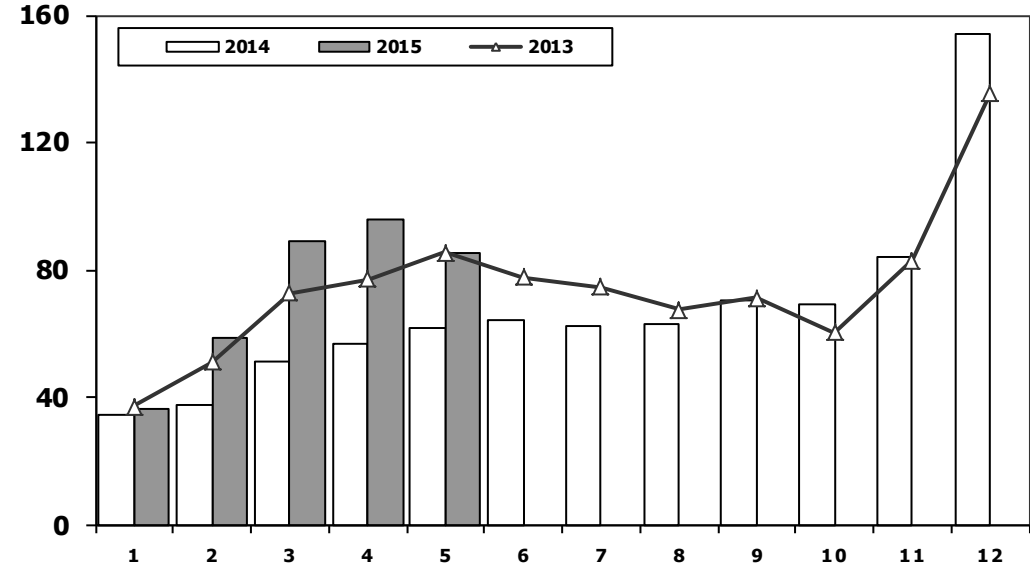


## Toplam Pazarın Analizi (x1000) Total Market Analysis (x1000)



Aylar / Months	10 Yil Ort. / 10 Yrs Avr. (x1000)	2015 (x1000)	%
1	31,7	36,6	15,3
2	42,3	58,5	38,5
3	64,3	89,1	38,6
4	65,4	95,6	46,0
5	70,5	85,2	20,8
<b>Total</b>	<b>274,2</b>	<b>365,0</b>	<b>33,1</b>

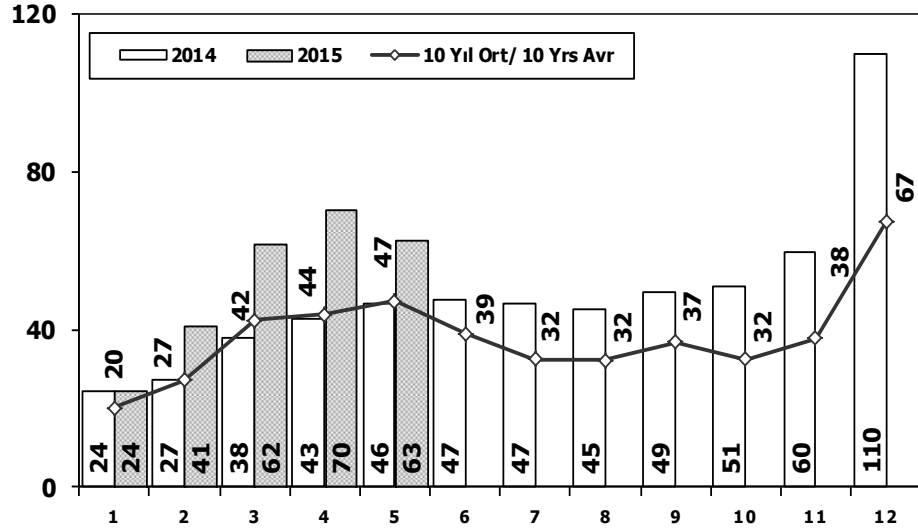
## Toplam Pazar (x1000) Total Market (x1000)



	1	2	3	4	5	6	7	8	9	10	11	12	5 Ay/Mo	Total
2005	22.687	38.291	64.502	60.873	71.383	64.379	63.847	68.647	66.580	60.791	65.719	110.838	257.736	758.537
2006	29.969	44.646	65.090	68.853	83.289	58.203	40.037	47.374	49.629	39.805	55.898	82.722	291.847	665.515
2007	24.950	31.702	45.488	45.633	51.255	51.661	50.117	54.171	50.078	56.058	67.017	106.076	199.028	634.206
2008	33.792	38.121	56.814	50.967	51.627	49.393	44.692	46.592	46.829	35.147	28.152	44.418	231.321	526.544
2009	20.631	22.846	56.531	54.426	64.887	63.102	30.246	37.092	83.403	22.117	29.202	91.386	219.321	575.869
2010	21.050	32.313	53.828	57.079	61.628	63.390	63.718	64.645	66.601	76.780	77.406	154.734	225.898	793.172
2011	47.658	62.348	83.333	82.071	85.093	85.863	65.364	61.378	63.643	72.640	67.195	134.281	360.503	910.867
2012	31.219	43.827	68.957	66.014	74.820	74.781	65.122	60.848	73.197	62.677	75.045	121.113	284.837	817.620
2013	37.140	50.931	72.688	77.015	85.421	77.771	74.726	67.383	71.037	60.399	83.017	135.596	323.195	893.124
2014	34.225	37.308	50.964	56.766	61.909	63.952	62.206	62.839	70.180	69.259	83.937	153.941	241.172	807.486
2015	36.579	58.532	89.121	95.574	85.154	0	0	0	0	0	0	0	364.960	364.960

## Otomobil Pazarının Analizi (x1000)

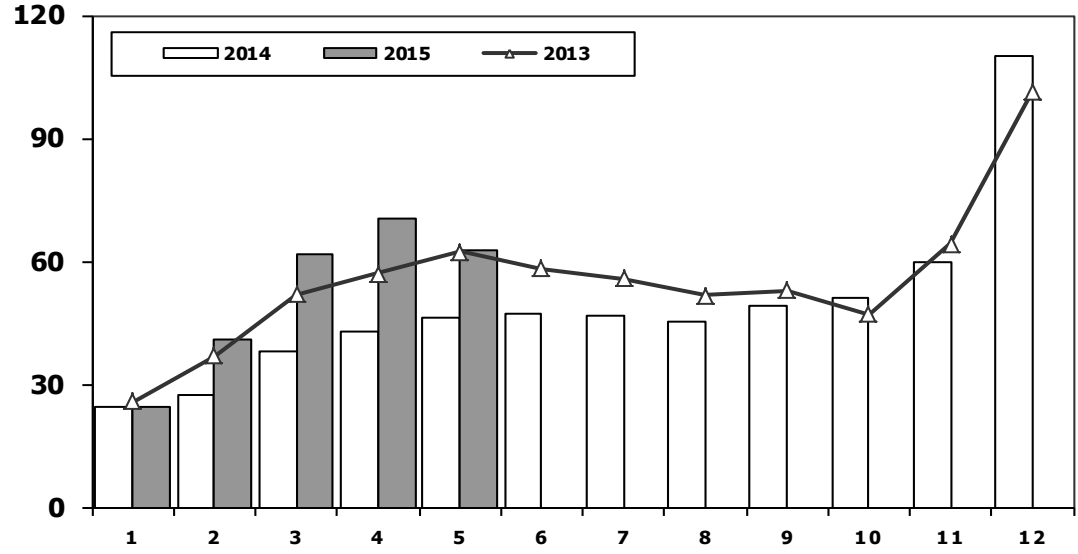
### P.Cars Market Analysis (x1000)



Aylar / Months	10 Yil Ort. 10 Yrs Avr. (x1000)	2015 (x1000)	%
1	20,0	24,5	22,7
2	27,1	40,8	50,4
3	42,3	61,7	45,9
4	43,8	70,2	60,3
5	47,2	62,9	33,2
<b>Total</b>	<b>180,4</b>	<b>260,1</b>	<b>44,2</b>

## Otomobil Pazarı (x1000)

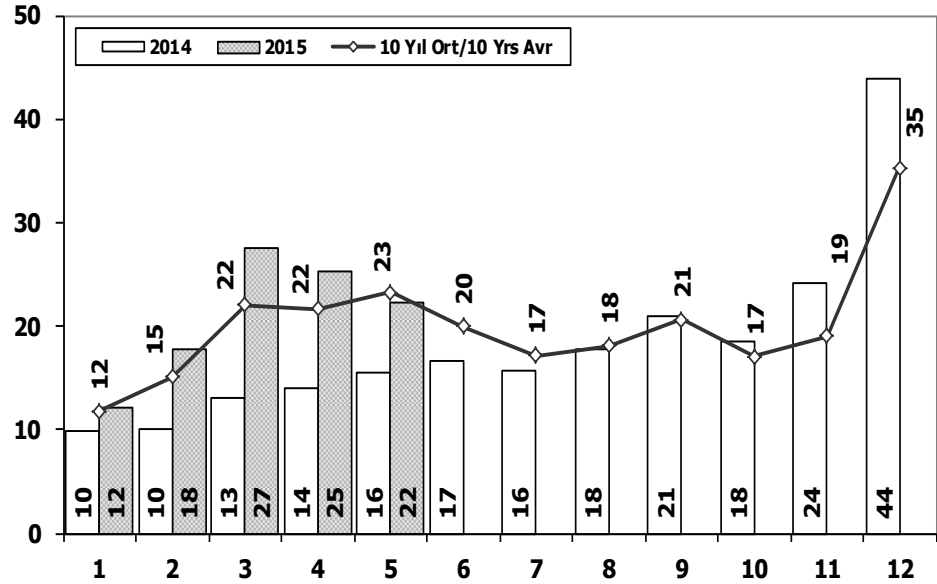
### P.Cars Market (x1000)



	1	2	3	4	5	6	7	8	9	10	11	12	5 Ay/Mo	Total
2005	11.595	21.012	38.129	36.206	38.480	40.900	38.969	38.648	36.410	34.960	37.841	65.447	145.422	438.597
2006	16.506	24.929	36.996	40.177	48.521	32.982	22.653	24.873	27.517	21.237	30.477	46.351	167.129	373.219
2007	13.186	17.212	24.336	25.204	29.067	30.126	28.246	28.469	27.662	32.569	39.643	61.745	109.005	357.465
2008	18.588	21.196	34.147	30.313	31.477	28.724	25.530	26.102	27.053	19.788	17.201	25.879	135.721	305.998
2009	13.173	14.492	40.622	36.202	44.188	41.019	16.637	22.537	52.162	13.828	17.781	57.178	148.677	369.819
2010	12.594	20.651	33.958	36.549	40.467	42.086	41.399	42.222	42.477	47.859	50.061	99.461	144.219	509.784
2011	29.868	39.004	54.023	53.835	56.302	56.714	43.518	38.875	39.964	47.508	44.951	88.957	233.032	593.519
2012	21.077	29.189	47.270	45.645	50.460	50.849	44.531	41.236	49.360	43.440	52.297	80.926	193.641	556.280
2013	25.835	36.814	51.785	56.999	62.383	58.290	55.712	51.611	52.925	46.985	64.117	101.199	233.816	664.655
2014	24.368	27.167	37.812	42.769	46.379	47.278	46.602	45.131	49.262	50.814	59.695	110.054	178.495	587.331
2015	24.498	40.817	61.676	70.211	62.878	0	0	0	0	0	0	0	260.080	260.080

## Ticari Araç Pazarının Analizi (x1000)

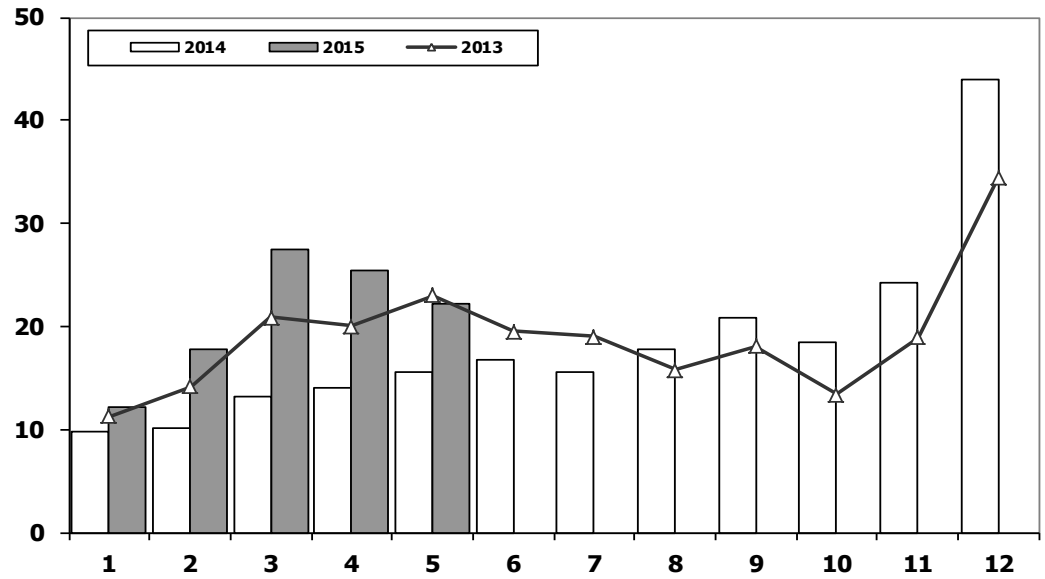
### CV Market Analysis (x1000)



Aylar / Months	10 Yil Ort. 10 Yrs Avr. (x1000)	2015 (x1000)	%
1	11,8	12,1	2,8
2	15,1	17,7	17,2
3	22,0	27,4	24,6
4	21,6	25,4	17,2
5	23,3	22,3	-4,4
<b>Total</b>	<b>93,8</b>	<b>104,9</b>	<b>11,8</b>

## Ticari Araç Pazarı (x1000)

### CV Total Market (Local + Imports) (x1000)

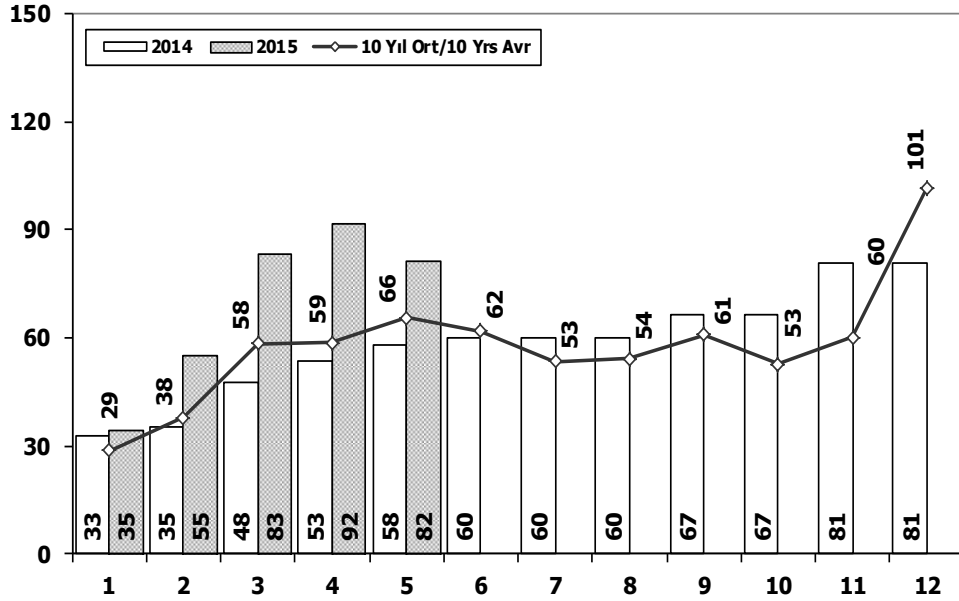


	1	2	3	4	5	6	7	8	9	10	11	12	5 Ay/Mo	Total
2005	11.092	17.279	26.373	24.667	32.903	23.479	24.878	29.999	30.170	25.831	27.878	45.391	112.314	319.940
2006	13.463	19.717	28.094	28.676	34.768	25.221	17.384	22.501	22.112	18.568	25.421	36.371	124.718	292.296
2007	11.764	14.490	21.152	20.429	22.188	21.535	21.871	25.702	22.416	23.489	27.374	44.331	90.023	276.741
2008	15.204	16.925	22.667	20.654	20.150	20.669	19.162	20.490	19.776	15.359	10.951	18.539	95.600	220.546
2009	7.458	8.354	15.909	18.224	20.699	22.083	13.609	14.555	31.241	8.289	11.421	34.208	70.644	206.050
2010	8.456	11.662	19.870	20.530	21.161	21.304	22.319	22.423	24.124	28.921	27.345	55.273	81.679	283.388
2011	17.790	23.344	29.310	28.236	28.791	29.149	21.846	22.503	23.679	25.132	22.244	45.324	127.471	317.348
2012	10.142	14.638	21.687	20.369	24.360	23.932	20.591	19.612	23.837	19.237	22.748	40.187	91.196	261.340
2013	11.305	14.117	20.903	20.016	23.038	19.481	19.014	15.772	18.112	13.414	18.900	34.397	89.379	228.469
2014	9.857	10.141	13.152	13.997	15.530	16.674	15.604	17.708	20.918	18.445	24.242	43.887	62.677	220.155
2015	12.081	17.715	27.445	25.363	22.276	0	0	0	0	0	0	0	104.880	104.880



## Hafif Araç Pazarının Analizi (x1000)

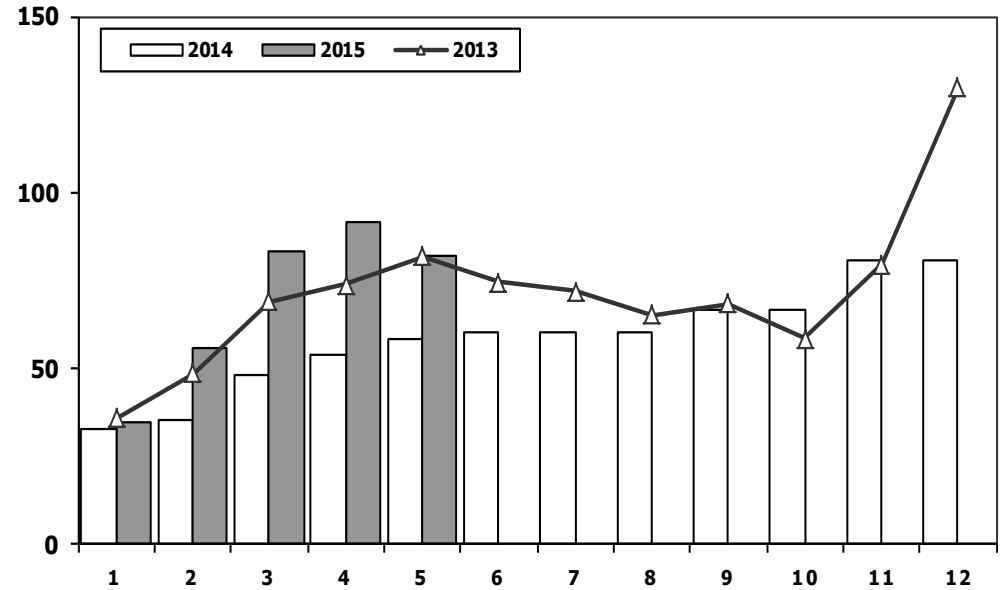
### LV Market Analysis (x1000)



Aylar / Months	10 Yil Ort. 10 Yrs Avr. (x1000)	2015 (x1000)	%
1	28,6	34,6	21,2
2	37,7	55,3	46,6
3	58,3	83,3	42,9
4	58,6	91,6	56,3
5	65,6	81,5	24,3
<b>Total</b>	<b>248,8</b>	<b>346,4</b>	<b>39,2</b>

## Hafif Araç Pazarı (x1000)

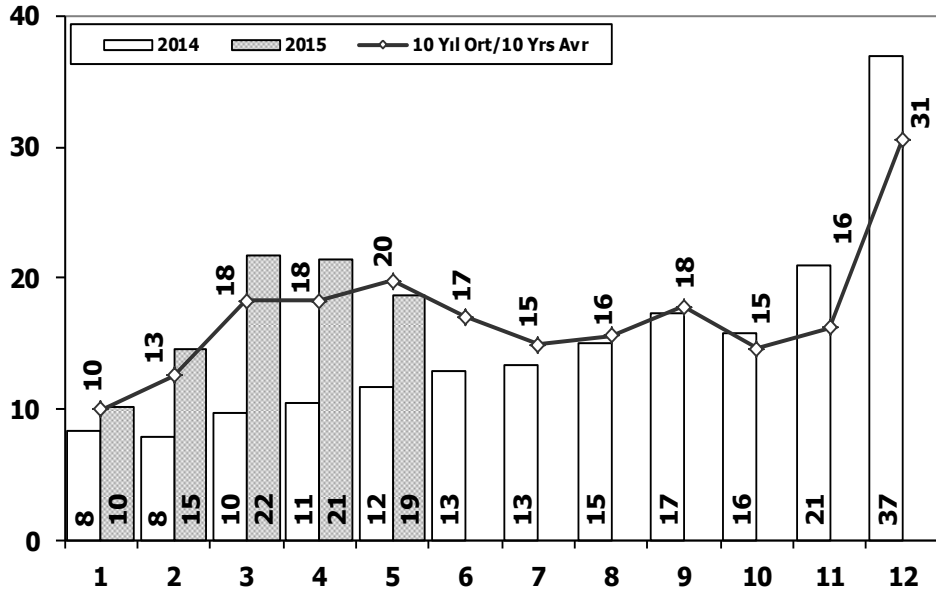
### LV Total Market (Local + Imports) (x1000)



	1	2	3	4	5	6	7	8	9	10	11	12	5 Ay/Mo	Total
2005	20.747	35.766	60.707	56.844	67.357	60.796	61.015	64.011	61.954	56.638	61.364	103.209	241.421	710.408
2006	27.917	40.938	60.052	64.038	78.229	54.355	37.251	43.767	46.109	36.542	51.867	76.787	271.174	617.852
2007	23.117	29.184	41.890	42.366	47.938	48.674	47.490	50.558	46.581	52.725	63.313	100.926	184.495	594.762
2008	31.527	35.251	53.649	47.701	48.598	46.324	42.156	43.670	43.932	32.884	26.253	42.078	216.726	494.023
2009	19.606	21.742	55.111	52.640	63.191	61.067	28.845	35.609	81.397	21.033	27.962	88.923	148.369	557.126
2010	20.095	31.172	51.769	54.946	59.377	60.896	61.345	61.764	63.814	73.404	73.962	148.369	217.359	760.913
2011	44.892	58.663	78.403	77.695	80.646	81.573	63.044	58.406	60.129	69.421	63.657	127.910	340.299	864.439
2012	29.545	41.324	64.884	62.949	70.863	71.067	62.304	58.148	69.629	59.938	71.710	115.400	269.565	777.761
2013	35.523	48.307	68.774	73.575	81.468	74.096	71.596	65.043	67.963	58.014	79.301	129.718	307.647	853.378
2014	32.670	35.021	47.581	53.305	58.121	60.163	59.907	60.199	66.531	66.573	80.621	80.621	226.698	701.313
2015	34.615	55.331	83.302	91.602	81.542	0	0	0	0	0	0	0	346.392	346.392

## Hafif Ticari Araç Pazarının Analizi (x1000)

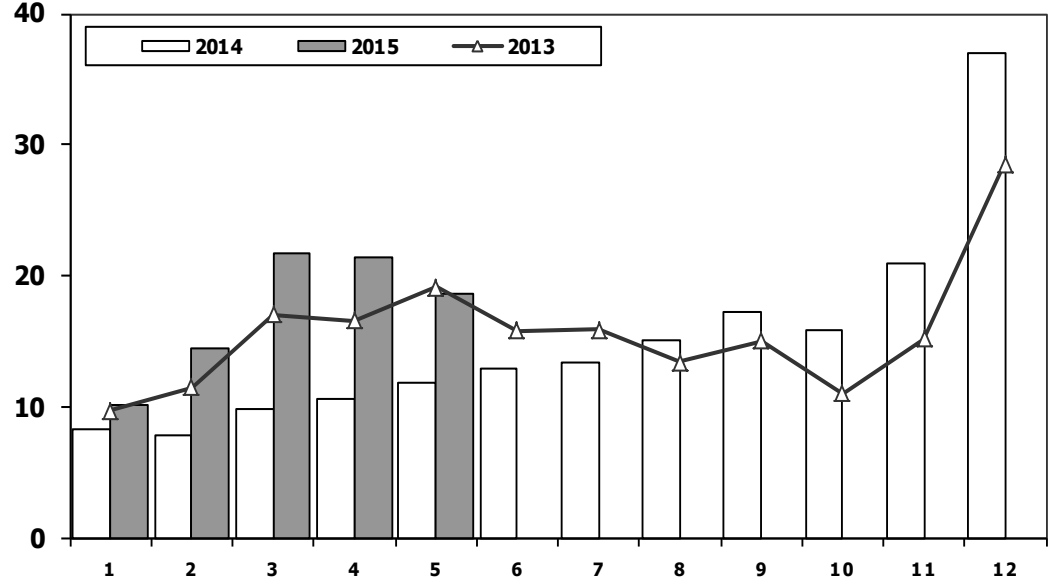
### LCV Market Analysis (x1000)



Aylar / Months	10 Yil Ort. 10 Yrs Avr. (x1000)	2015 (x1000)	%
1	10,0	10,1	1,4
2	12,5	14,5	15,7
3	18,3	21,6	18,3
4	18,3	21,4	16,9
5	19,8	18,7	-5,7
<b>Total</b>	<b>78,9</b>	<b>86,3</b>	<b>9,4</b>

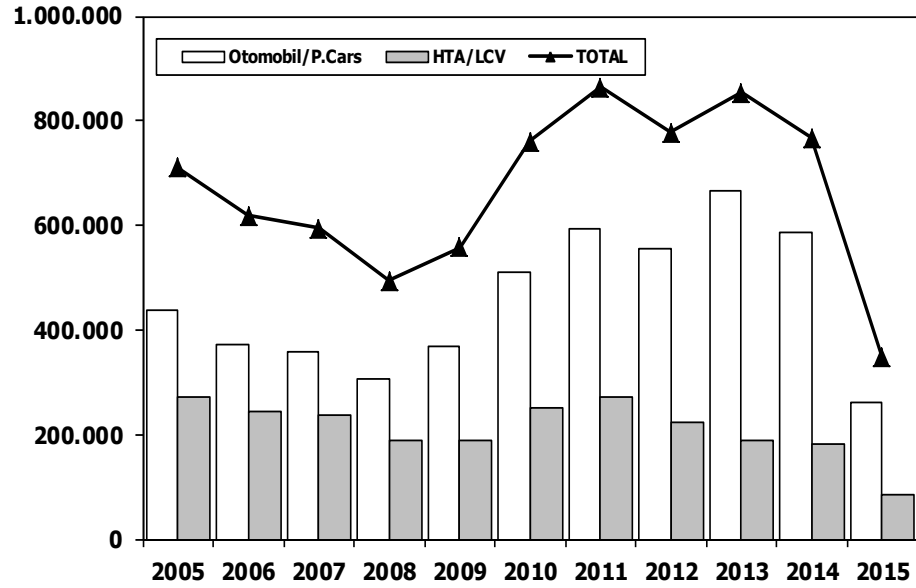
## Hafif Ticari Araç Pazarı (x1000)

### LCV Total Market (Local + Imports) (x1000)



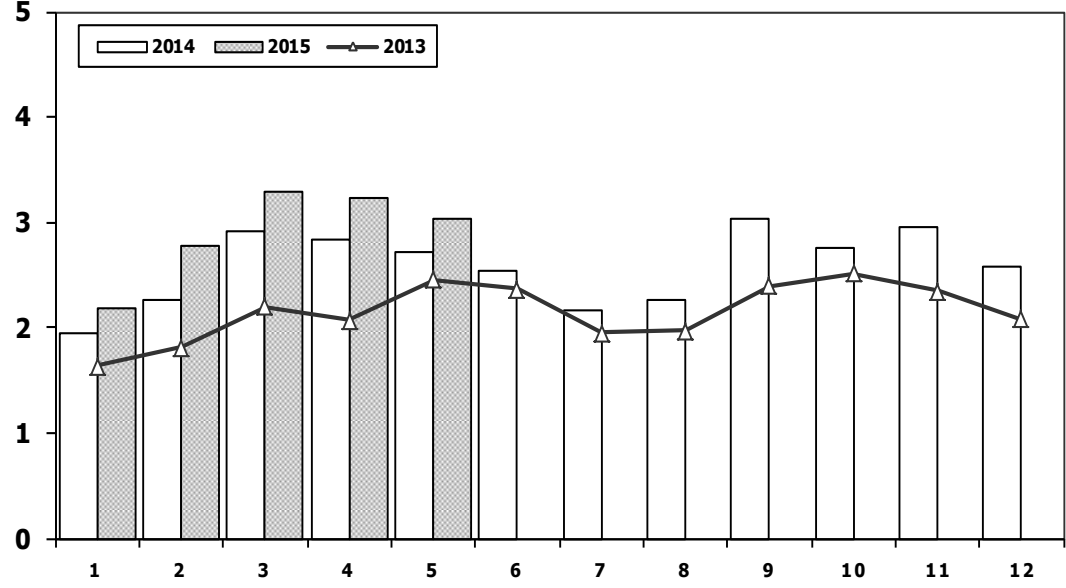
	1	2	3	4	5	6	7	8	9	10	11	12	5 Ay/Mo	Total
2005	9.152	14.754	22.578	20.638	28.877	19.896	22.046	25.363	25.544	21.678	23.523	37.762	95.999	271.811
2006	11.411	16.009	23.056	23.861	29.708	21.373	14.598	18.894	18.592	15.305	21.390	30.436	104.045	244.633
2007	9.931	11.972	17.554	17.162	18.871	18.548	19.244	22.089	18.919	20.156	23.670	39.181	75.490	237.297
2008	12.939	14.055	19.502	17.388	17.121	17.600	16.626	17.568	16.879	13.096	9.052	16.199	81.005	188.025
2009	6.433	7.250	14.489	16.438	19.003	20.048	12.208	13.072	29.235	7.205	10.181	31.745	63.613	187.307
2010	7.501	10.521	17.811	18.397	18.910	18.810	19.946	19.542	21.337	25.545	23.901	48.908	73.140	251.129
2011	15.024	19.659	24.380	23.860	24.344	24.859	19.526	19.531	20.165	21.913	18.706	38.953	107.267	270.920
2012	8.468	12.135	17.614	17.304	20.403	20.218	17.773	16.912	20.269	16.498	19.413	34.474	75.924	221.481
2013	9.688	11.493	16.989	16.576	19.085	15.806	15.884	13.432	15.038	11.029	15.184	28.519	73.831	188.723
2014	8.302	7.854	9.769	10.536	11.742	12.885	13.305	15.068	17.269	15.759	20.926	36.935	48.203	180.350
2015	10.117	14.514	21.626	21.391	18.664	0	0	0	0	0	0	0	86.312	86.312

## Hafif Araç Pazarı (AYA < 3.5 Ton) Light Vehicle Market (GVW < 3.5 Ton)



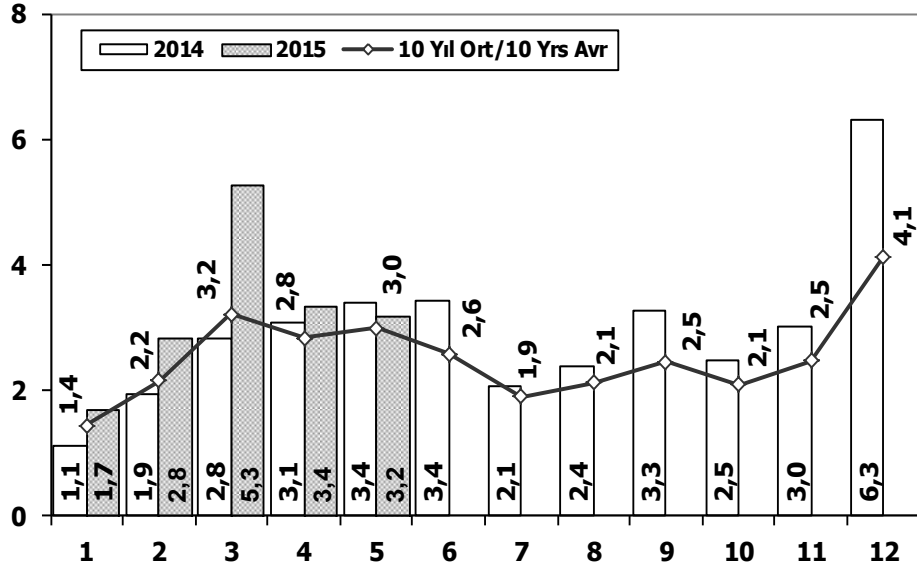
	2005	2006	2007	2008	2009	2010	2011	2012	2013	2014	2015
Otomobil/P.Cars	438.597	373.219	357.465	305.998	369.819	509.784	593.519	556.280	664.655	587.331	260.080
HTA/LCV	271.811	244.633	237.297	188.025	187.307	251.129	270.920	221.481	188.723	180.350	86.312
<b>TOTAL</b>	<b>710.408</b>	<b>617.852</b>	<b>594.762</b>	<b>494.023</b>	<b>557.126</b>	<b>760.913</b>	<b>864.439</b>	<b>777.761</b>	<b>853.378</b>	<b>767.681</b>	<b>346.392</b>
HTA/LCV (%)	38	40	40	38	34	33	31	28	22	23	25

## Traktör Pazarı (x1000) F.Tractor Market (x1000)

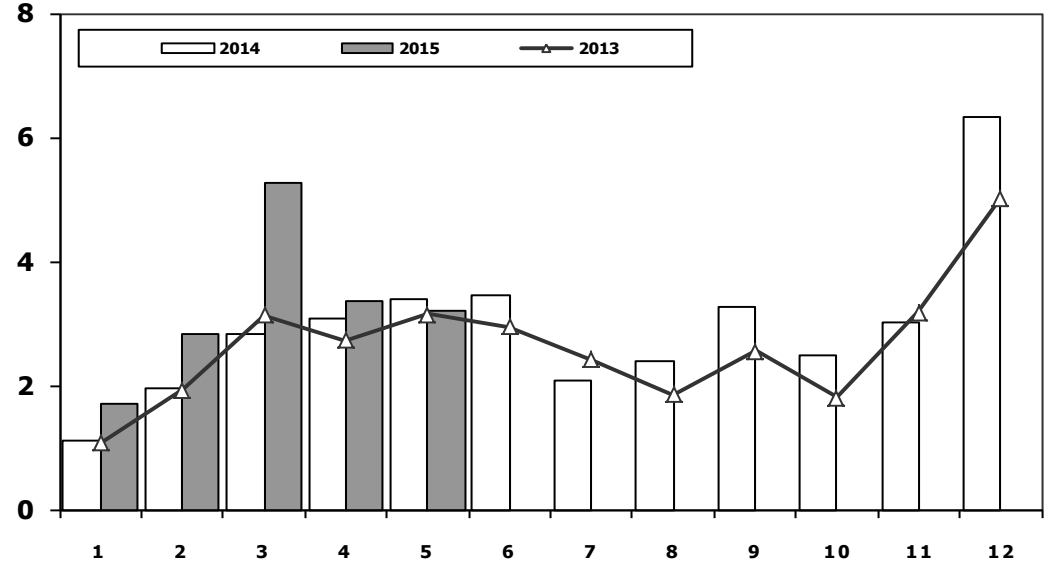


	1	2	3	4	5	6	7	8	9	10	11	12	5 Ay/Mo	Total
<b>2005</b>	1.026	1.636	2.001	2.599	2.569	2.780	2.148	2.819	2.567	2.477	2.297	2.089	9.831	27.008
<b>2006</b>	1.578	2.493	2.746	2.841	3.561	2.356	1.685	2.177	2.756	1.915	2.353	1.925	13.219	28.386
<b>2007</b>	1.812	1.778	2.063	2.107	2.266	1.853	1.653	2.065	2.372	2.239	2.231	1.602	10.026	24.041
<b>2008</b>	1.510	1.427	1.933	1.692	1.689	1.592	1.275	924	904	609	707	359	8.251	14.621
<b>2009</b>	267	344	388	638	759	828	741	534	586	765	725	715	2.396	7.290
<b>2010</b>	714	903	1.432	1.653	1.736	1.673	1.613	1.527	2.351	2.787	2.656	2.345	6.438	21.390
<b>2011</b>	2.458	2.610	3.105	3.403	3.847	3.599	2.952	1.559	2.957	2.823	2.603	2.807	15.423	34.723
<b>2012</b>	2.216	2.632	3.223	3.259	3.067	2.821	2.037	1.262	1.648	1.858	1.921	1.579	14.397	27.523
<b>2013</b>	1.633	1.817	2.196	2.070	2.455	2.370	1.955	1.969	2.396	2.510	2.343	2.080	10.171	25.794
<b>2014</b>	1.941	2.256	2.915	2.837	2.723	2.534	2.171	2.265	3.039	2.755	2.964	2.573	12.672	30.973
<b>2015</b>	2.187	2.767	3.297	3.235	3.039	0	0	0	0	0	0	0	14.525	14.525

## Kamyon Pazarının Analizi (x1000) AYA > 5 Ton Truck Market Analysis (x1000) GWW > 5 Ton



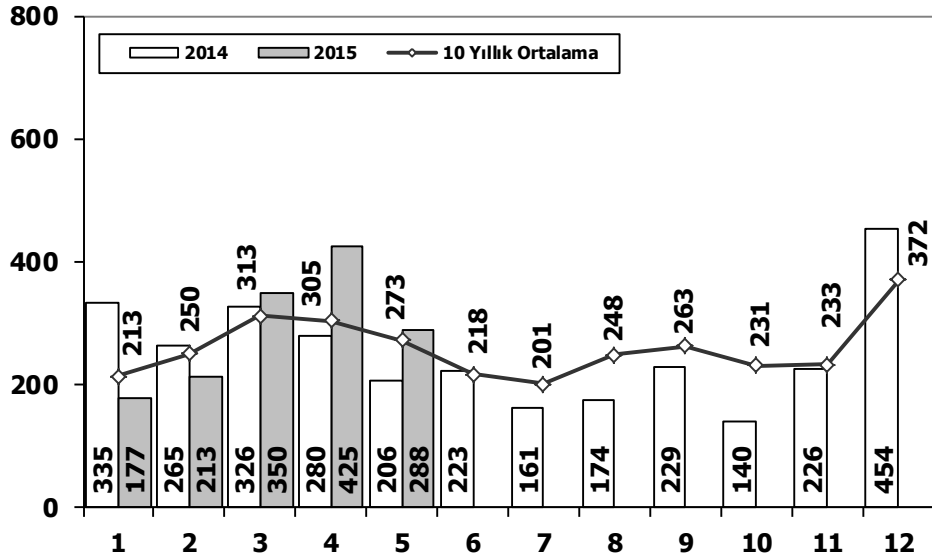
## Kamyon Pazarı (x1000) AYA > 5 Ton Truck Market (x1000) GWW > 5 Ton



Aylar / Months	10 Yil Ort. 10 Yrs Avr. (x1000)	2015 (x100)	%
1	1,4	1,7	17,8
2	2,2	2,8	31,7
3	3,2	5,3	63,7
4	2,8	3,4	17,7
5	3,0	3,2	6,5
<b>Total</b>	<b>12,7</b>	<b>16,4</b>	<b>29,1</b>

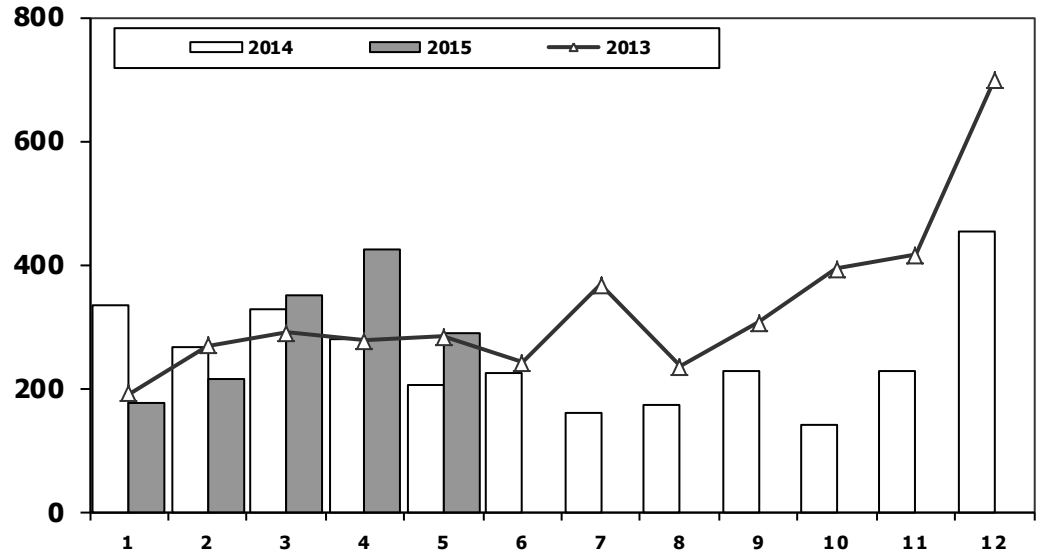
	1	2	3	4	5	6	7	8	9	10	11	12	5 Ay/Mo	Total
2005	1.693	2.186	3.288	3.484	3.413	3.147	2.504	4.028	4.043	3.708	3.918	6.570	14.064	41.982
2006	1.767	3.310	4.467	4.180	4.449	3.398	2.472	3.142	3.052	2.926	3.550	5.358	18.173	42.071
2007	1.554	2.055	3.065	2.940	2.865	2.613	2.372	3.145	2.988	2.886	3.258	4.444	12.479	34.185
2008	1.797	2.309	2.621	2.578	2.459	2.526	2.067	2.377	2.390	1.790	1.512	1.834	11.764	26.260
2009	771	759	1.034	1.342	1.355	1.651	1.156	1.205	1.780	866	981	2.015	5.261	14.915
2010	777	968	1.772	1.807	1.966	2.205	2.093	2.446	2.444	3.071	3.136	5.677	7.290	28.362
2011	2.552	3.292	4.418	3.754	3.803	3.749	1.996	2.478	3.081	2.774	3.108	5.787	17.819	40.792
2012	1.375	2.159	3.595	2.697	3.321	3.250	2.450	2.277	2.991	2.244	3.006	5.000	13.147	34.365
2013	1.077	1.931	3.127	2.720	3.145	2.951	2.411	1.845	2.554	1.801	3.173	5.025	12.000	31.760
2014	1.117	1.949	2.818	3.092	3.405	3.438	2.083	2.390	3.281	2.494	3.028	6.313	12.381	35.408
2015	1.708	2.840	5.270	3.351	3.189	0	0	0	0	0	0	0	16.358	16.358

## Midibüs Pazarının Analizi (7-9 mt / 25-35 Kişilik) Midibus Market Analysis (7-9 mt / 25-35 Passengers)



Aylar / Months	10 Yıl Ort. 10 Yrs Avr.	2015	%
1	213	177	-17
2	250	213	-15
3	313	350	12
4	305	425	39
5	273	288	5
<b>Total</b>	<b>1.354</b>	<b>1.453</b>	<b>7</b>

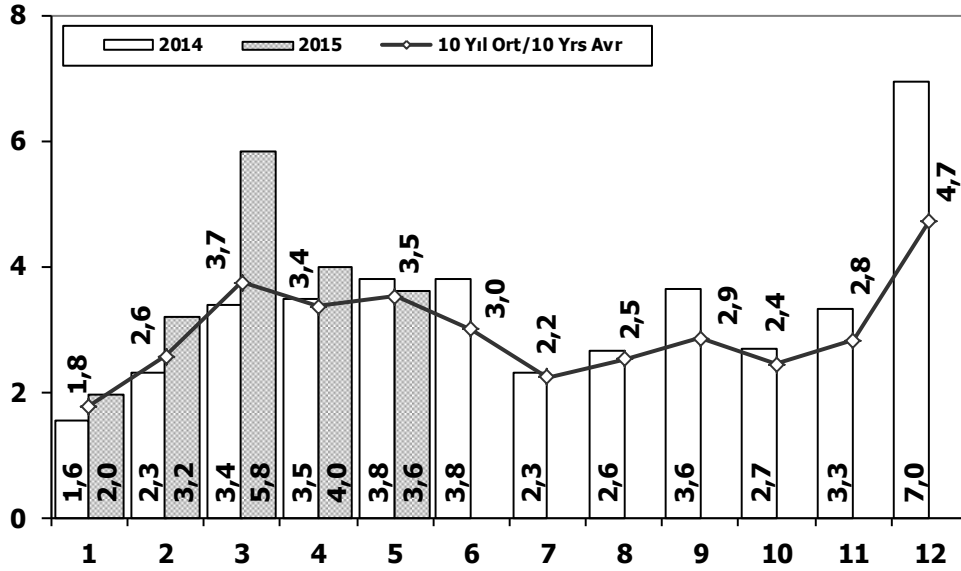
## Midibüs Pazarı (7-9 mt / 25-35 Kişilik Midibüs) Midibus Market (7-9 mt / 25-35 Passengers)



	1	2	3	4	5	6	7	8	9	10	11	12	5 Ay/Mo	Total
2005	182	258	432	393	439	269	252	459	436	329	328	574	1.704	4.351
2006	207	297	406	388	381	266	230	353	322	253	305	401	1.679	3.809
2007	207	272	404	238	302	283	164	365	399	279	283	465	1.423	3.661
2008	391	476	436	512	419	331	368	380	341	352	246	270	2.234	4.522
2009	154	124	160	220	174	198	160	175	168	143	206	323	832	2.205
2010	155	131	185	167	140	138	129	246	236	206	202	437	778	2.372
2011	138	195	294	316	280	258	211	305	301	276	260	270	1.223	3.104
2012	179	257	277	229	257	239	216	249	325	269	189	398	1.199	3.084
2013	191	268	289	276	283	241	367	235	305	392	415	697	1.307	3.959
2014	335	265	326	280	206	223	161	174	229	140	226	454	1.412	3.019
2015	177	213	350	425	288	0	0	0	0	0	0	0	1.453	1.453

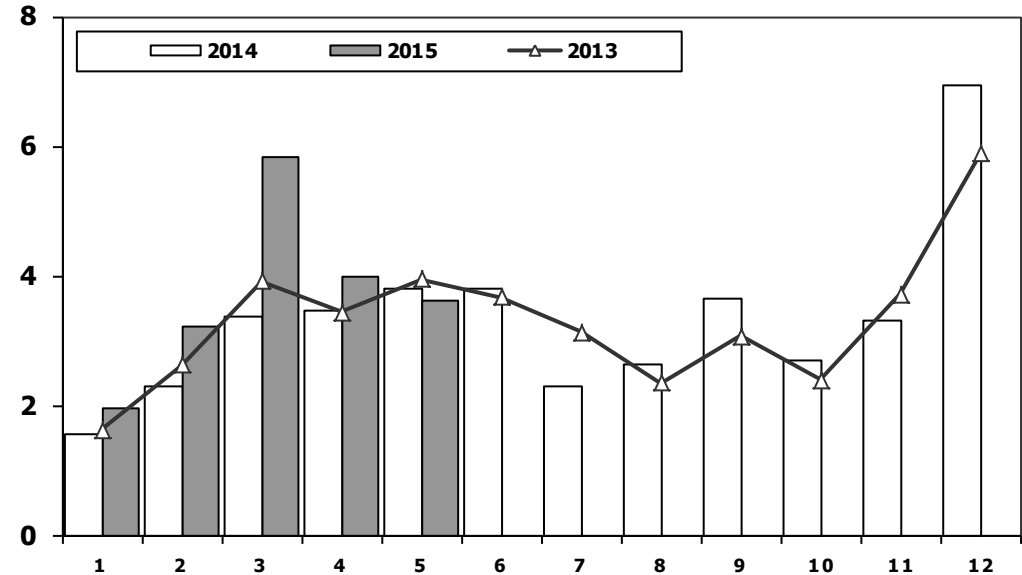


## Ağır Ticari Araç Pazarının Analizi (x1000) HCV Market Analysis (x1000)



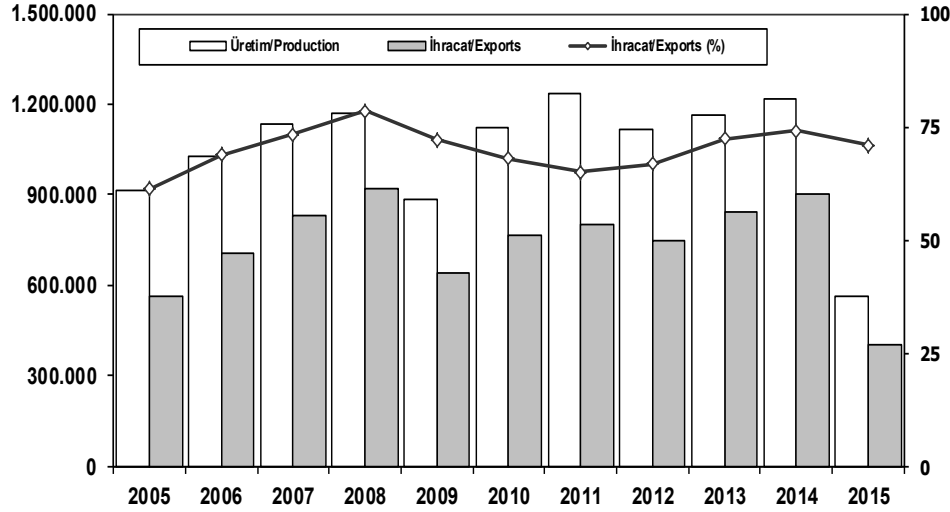
Aylar / Months	10 Yıl Ort. / 10 Yrs Avr. (x1000)	2015 (x1000)	%
1	1,8	2,0	10,9
2	2,6	3,2	24,8
3	3,7	5,8	55,6
4	3,4	4,0	18,3
5	3,5	3,6	2,9
<b>Total</b>	<b>14,9</b>	<b>18,6</b>	<b>24,3</b>

## Ağır Ticari Araç Pazarı (x1000) HCV Market (x1000)



	1	2	3	4	5	6	7	8	9	10	11	12	5 Ay/Mo	Total
2005	1.940	2.525	3.795	4.029	4.026	3.583	2.832	4.636	4.626	4.153	4.355	7.629	16.315	48.129
2006	2.052	3.708	5.038	4.815	5.060	3.848	2.786	3.607	3.520	3.263	4.031	5.935	20.673	47.663
2007	1.833	2.518	3.598	3.267	3.317	2.987	2.627	3.613	3.497	3.333	3.704	5.150	14.533	39.444
2008	2.265	2.870	3.165	3.266	3.029	3.069	2.536	2.922	2.897	2.263	1.899	2.340	14.595	32.521
2009	1.025	1.104	1.420	1.786	1.696	2.035	1.401	1.483	2.006	1.084	1.240	2.463	7.031	18.743
2010	955	1.141	2.059	2.133	2.251	2.494	2.373	2.881	2.787	3.376	3.444	6.365	8.539	32.259
2011	2.766	3.685	4.930	4.376	4.447	4.290	2.320	2.972	3.514	3.219	3.538	6.371	20.204	46.428
2012	1.674	2.503	4.073	3.065	3.957	3.714	2.818	2.700	3.568	2.739	3.335	5.713	15.272	39.859
2013	1.617	2.624	3.914	3.440	3.953	3.675	3.130	2.340	3.074	2.385	3.716	5.878	15.548	39.746
2014	1.555	2.287	3.383	3.461	3.788	3.789	2.299	2.640	3.649	2.686	3.316	6.952	14.474	39.805
2015	1.964	3.201	5.819	3.972	3.612	0	0	0	0	0	0	0	18.568	18.568

## İhracat/Üretim (2005-2015) Exports/Production (2005-2015)



	2005	2006	2007	2008	2009	2010	2011	2012	2013	2014	2015
Üretim/Production	916.062	1.026.427	1.132.951	1.171.917	884.466	1.124.982	1.234.637	1.115.233	1.166.043	1.218.848	563.100
İhracat/Exports	561.078	706.402	829.879	920.763	637.855	763.670	801.112	745.354	843.467	902.194	399.385
İhracat/Exports (%)	61	69	73	79	72	68	65	67	72	74	71

## Taşıt Araçları İhracatı (2013-2015) Motor Vehicle Exports (2013-2015)

SEKTÖR/SECTOR	2013	2014	2014	2015	2014/2015 (%)
			5 Ay-5 Mo		
OTOMOBİL/ P.Cars	484.504	581.993	244.649	247.301	1
TİCARİ ARAÇLAR/ CV	343.967	303.187	122.958	146.355	19
* Kamyonet/Pick-Up	300.765	269.995	110.842	124.140	12
* Minibüs/Minibus	34.664	26.458	9.705	19.501	101
* Kamyon/Truck	3.055	1.281	421	379	-10
* Midibüs/Midibus	985	824	328	143	-56
* Otobüs/Bus	4.498	4.629	1.662	2.192	32
<b>TAŞIT ARAÇLARI /MV TOTAL</b>	<b>828.471</b>	<b>885.180</b>	<b>367.607</b>	<b>393.656</b>	<b>7</b>
TRAKTÖR/F.TRACTOR	14.996	17.014	6.490	5.729	-12
<b>TOTAL</b>	<b>843.467</b>	<b>902.194</b>	<b>374.097</b>	<b>399.385</b>	<b>7</b>

## Otomotiv Ana ve Yan Sanayii İhracatı (ABD \$) CBU and CKD Exports - \$

SEKTÖR/SECTOR	2012 Toplam (Total)	2013 Toplam (Total)	2014 Toplam (Total)	2014	2015	2015/2014 (%)
				5 Ay (5 Months)		
<b>Toplam Yan Sanayi/Total Component Industry</b>	<b>8.215.954.295</b>	<b>9.065.017.539</b>	<b>9.508.032.776</b>	<b>4.169.008.947</b>	<b>3.564.547.846</b>	<b>-14</b>
İç ve Dış Lastik / Tyres	1.199.572.093	1.130.005.892	1.126.947.745	516.780.592	398.095.229	-23
Emniyet Camı / Safety Glasses	120.641.763	135.230.310	143.231.168	65.851.428	53.011.891	-19
Motor (Engine)	272.085.582	319.294.885	171.893.752	75.979.438	53.145.695	-30
Akümülatör / Batteries	250.104.807	306.451.449	289.150.764	105.779.860	79.829.152	-25
Diğer Aksam ve Parça / Spare Parts&Components	6.373.550.048	7.174.035.002	7.776.809.346	3.404.617.629	2.980.465.879	-12
<b>Toplam Ana Sanayi/Total Vehicle Industry</b>	<b>11.100.457.162</b>	<b>12.491.591.365</b>	<b>13.272.198.027</b>	<b>5.681.096.706</b>	<b>5.126.114.956</b>	<b>-10</b>
Otobüs / Bus	855.424.304	937.790.963	985.983.007	376.244.292	400.695.550	6
Midibüs-Minibüs / Minibus- Minibus	161.806.275	147.769.644	97.685.509	20.436.112	58.271.362	185
Otomobil (P. Cars)	6.068.045.119	6.855.475.590	7.270.836.596	3.197.552.167	2.859.149.016	-11
Kamyon-Kamyonet/HCV-LCV	3.433.310.999	3.918.798.755	4.201.921.030	1.806.681.248	1.558.915.615	-14
Çekici/Truck-Tractor	71.336.635	218.385.732	252.416.256	104.104.872	101.877.971	-2
Römork ve Yan Römork/Trailer-Semi Trailer	195.093.537	77.907.407	38.396.525	16.701.414	13.191.756	-21
Tarım Traktörü/Farm Tractor	315.440.294	335.463.275	424.959.103	159.376.600	134.013.686	-16
<b>Toplam/Total</b>	<b>19.316.411.457</b>	<b>21.556.608.904</b>	<b>22.780.230.802</b>	<b>9.850.105.653</b>	<b>8.690.662.802</b>	<b>-12</b>

Kaynak: Otomotiv Endüstrisi İhracatçıları Birliği



**Firma Bazında İhracat (Adet)**  
Export Of member Companies (Unit)

**Sektör Bazında İhracat (\$)**  
Exports on Sectorial Basis

FİRMALAR Companies	2013	2014	Ocak-Mayıs 5 Months	
			2014	2015
			OYAK RENAULT	266.508
FORD OTOSAN	208.722	187.921	72.801	93.636
HYUNDAI ASSAN	85.500	179.793	70.870	81.870
TOFAŞ	160.309	142.234	61.738	69.460
TOYOTA	86.908	109.517	52.169	35.561
TÜRK TRAKTÖR	14.402	15.866	6.003	5.463
M. BENZ TÜRK	5.331	3.438	1.167	1.616
HONDA TÜRKİYE	2.121	1.560	540	746
MAN TÜRKİYE	898	937	418	721
KARSAN	10.120	37	10	318
HATTAT TARIM	594	1.148	487	266
OTOKAR	620	580	91	195
A.I.O.S.	770	748	323	88
TEMSA GLOBAL	663	423	133	84
BMC	1	0	0	0
<b>GENEL TOPLAM</b>	<b>843.467</b>	<b>902.194</b>	<b>374.097</b>	<b>399.385</b>

Kaynak: OSD

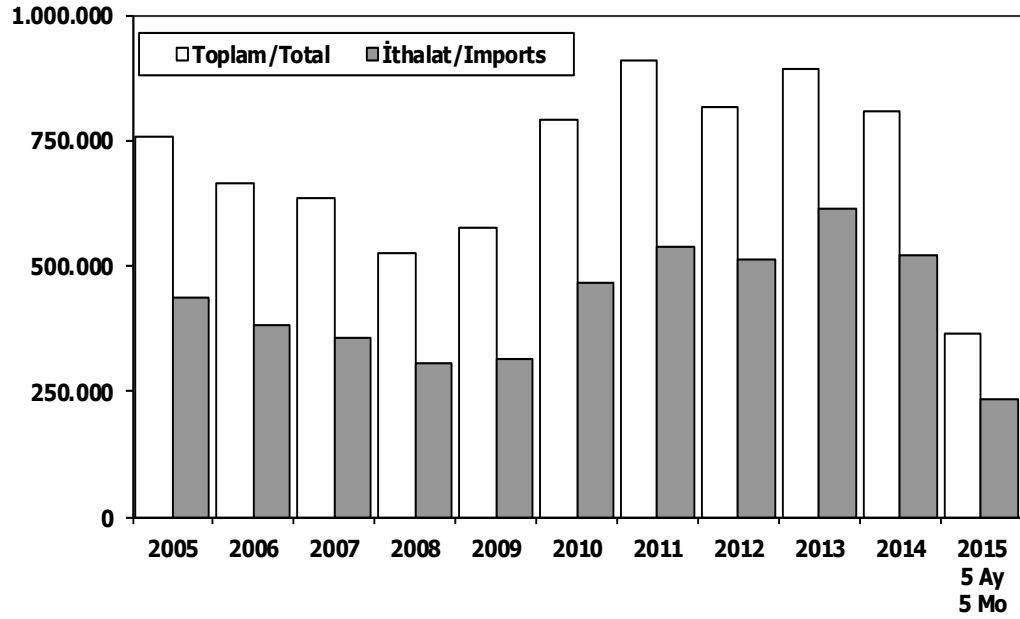
SEKTÖR (Sector)	Mayıs (May)				Ocak-Mayıs (January-May)			
	2014	2015	2014/2015 (%)	2015 (%)	2014	2015	2014/2015 (%)	2015 (%)
1 Otomotiv Endüstrisi	2.040.798	1.481.932	-27,4	13,7	9.671.812	8.521.227	-11,9	13,9
2 Hazır giyim ve Konfeksiyon	1.612.655	1.348.222	-16,4	12,5	7.827.746	6.712.228	-14,3	11,0
3 Kimyevi Maddeler ve Mamulleri	1.586.058	1.379.462	-13,0	12,7	7.365.985	6.540.363	-11,2	10,7
4 İhracatçı Birlikleri Kaydından Muaf İhracat	**	**	**	**	3.389.043	6.257.781	84,6	10,2
5 Çelik	1.272.872	801.019	-37,1	7,4	5.941.080	4.530.885	-23,7	7,4
6 Elektrik Elektronik ve Hizmet	1.064.519	828.472	-22,2	7,7	5.023.931	4.115.004	-18,1	6,7
7 Tekstil ve Hammaddeleri	768.633	653.933	-14,9	6,0	3.812.791	3.317.003	-13,0	5,4
8 Hububat, Bakliyat, Yağlı Tohumlar ve Mam.	542.968	482.190	-11,2	4,5	2.922.279	2.583.763	-11,6	4,2
9 Demir ve Demir Dışı Metaller	650.684	520.655	-20,0	4,8	3.058.303	2.580.404	-15,6	4,2
10 Makine ve Aksamları	544.228	411.136	-24,5	3,8	2.521.783	2.256.468	-10,5	3,7
11 Mobilya, Kağıt ve Orman Ürünleri	416.568	330.138	-20,7	3,1	1.886.582	1.660.274	-12,0	2,7
12 Madencilik Ürünleri	465.271	406.289	-12,7	3,8	1.968.579	1.591.378	-19,2	2,6
13 İklimlendirme Sanayii	411.021	298.033	-27,5	2,8	1.889.399	1.519.247	-19,6	2,5
14 Mücevher	202.616	346.275	70,9	3,2	997.801	1.187.381	19,0	1,9
15 Çimento Cam Seramik ve Toprak Ürünleri	289.417	243.867	-15,7	2,3	1.358.778	1.179.603	-13,2	1,9
16 Fındık ve Mamulleri	141.867	216.964	52,9	2,0	781.435	1.149.455	47,1	1,9
17 Yaş Meyve ve Sebze	188.105	161.794	-14,0	1,5	977.590	813.759	-16,8	1,3
18 Su Ürünleri ve Hayvansal Mamuller	186.505	125.124	-32,9	1,2	979.198	808.569	-17,4	1,3
19 Halı	194.614	169.934	-12,7	1,6	944.825	806.531	-14,6	1,3
20 Deri ve Deri Mamulleri	166.262	118.181	-28,9	1,1	733.424	637.217	-13,1	1,0
21 Savunma ve Havaçılık Sanayii	142.828	110.326	-22,8	1,0	597.500	570.991	-4,4	0,9
22 Meyve Sebze Mamulleri	109.161	96.314	-11,8	0,9	573.804	498.542	-13,1	0,8
23 Kuru Meyve ve Mamulleri	108.919	85.612	-21,4	0,8	552.524	487.748	-11,7	0,8
24 Tütün ve Mamulleri	86.381	53.360	-38,2	0,5	435.803	403.675	-7,4	0,7
25 Gemi ve Yat	131.933	117.094	-11,2	1,1	449.131	389.688	-13,2	0,6
26 Zeytin ve Zeytinyağı	19.756	17.066	-13,6	0,2	110.287	90.386	-18,0	0,1
27 Diğer Sanayi Ürünleri	10.638	9.892	-7,0	0,1	49.600	43.395	-12,5	0,1
28 Süs Bitkileri	8.222	6.168	-25,0	0,1	48.187	43.240	-10,3	0,1
<b>TOPLAM (Total)</b>	<b>13.363.501</b>	<b>10.819.450</b>	<b>-19,0</b>	<b>100,0</b>	<b>66.869.199</b>	<b>61.296.205</b>	<b>-8,3</b>	<b>100,0</b>

Kaynak: TİM

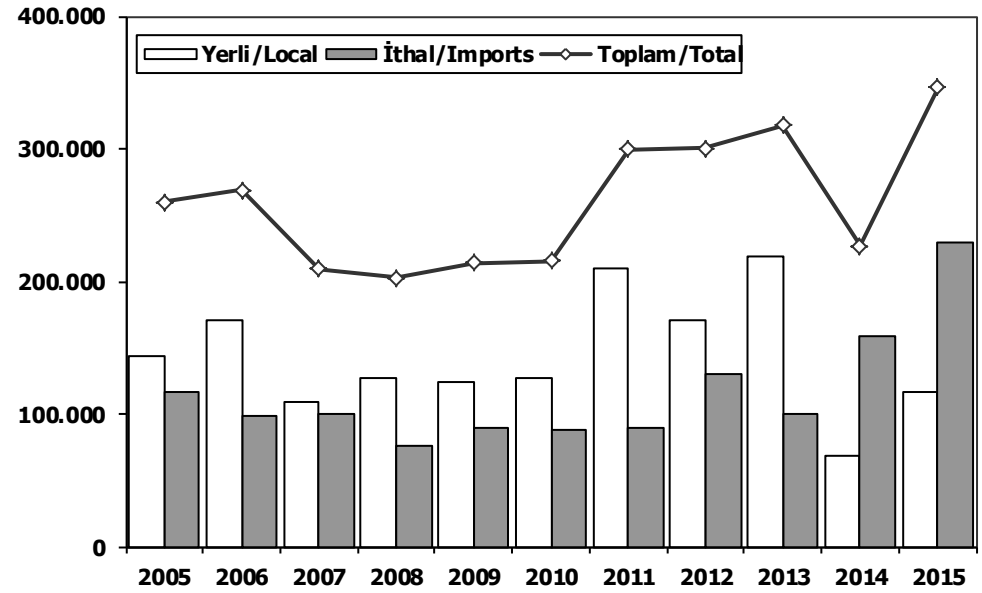
**First 3 Sectors:**

- 1- Transport Vehicle and Component Industry
- 2- Ready Wear and Confection
- 3- Chemical Articles and Products

## Toplam Pazar (Otomobil+T.Araç) Total Market (P.Cars+C.V)



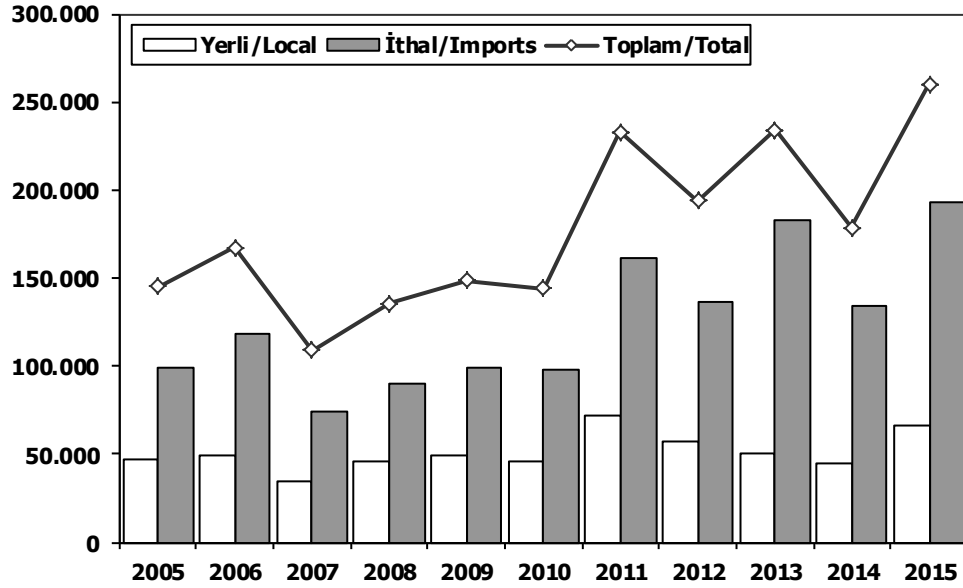
## Hafif Araçlar Pazarı (2005-2015 Ocak-Mayıs) LV Market (2005-2015 January-May)



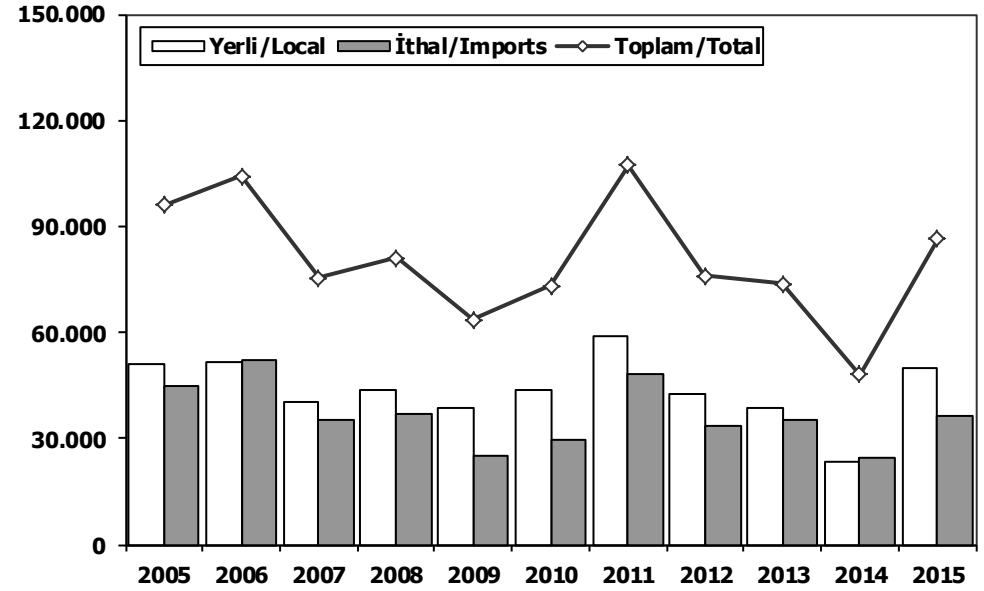
	2005	2006	2007	2008	2009	2010	2011	2012	2013	2014	2014 5 Ay 5 Mo	2015 5 Ay 5 Mo
Toplam/Total	758.537	665.515	634.206	526.544	575.869	793.172	910.867	817.620	893.124	807.486	241.172	364.960
İthalat/Imports	436.033	382.460	355.752	306.087	313.921	465.408	538.532	511.694	615.609	522.842	162.455	234.035
İthalat/Imports (%)	57	57	56	58	55	59	59	63	69	65	67	64

	2005	2006	2007	2008	2009	2010	2011	2012	2013	2014	2015
Yerli/Local	143.543	170.660	108.978	127.032	124.382	127.710	209.608	170.007	218.313	67.992	116.696
İthal/Imports	115.917	97.878	100.514	75.517	89.694	87.908	89.649	130.691	99.558	158.706	229.696
Toplam/Total	259.460	268.538	209.492	202.549	214.076	215.618	299.257	300.698	317.871	226.698	346.392
İthalat/Imports (%)	45	36	48	37	42	41	30	43	31	70	66

## Otomobil Pazarı (2005-2015 Ocak-Mayıs) P.Cars Market (2005-2015 January-May)

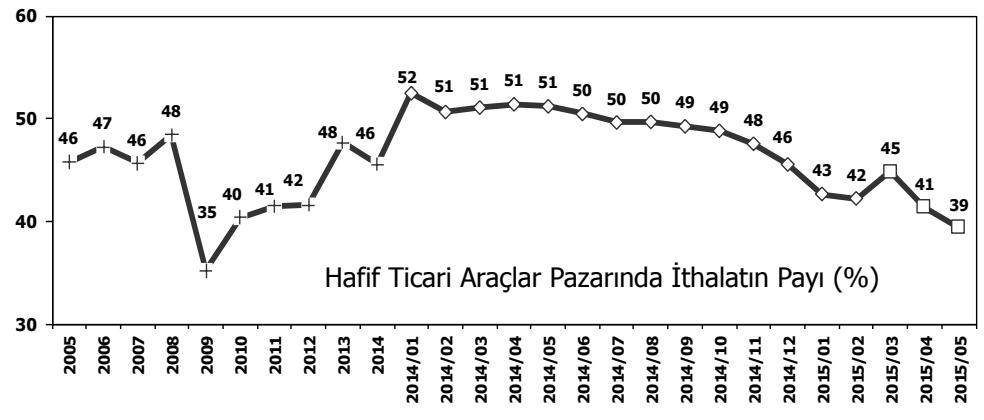
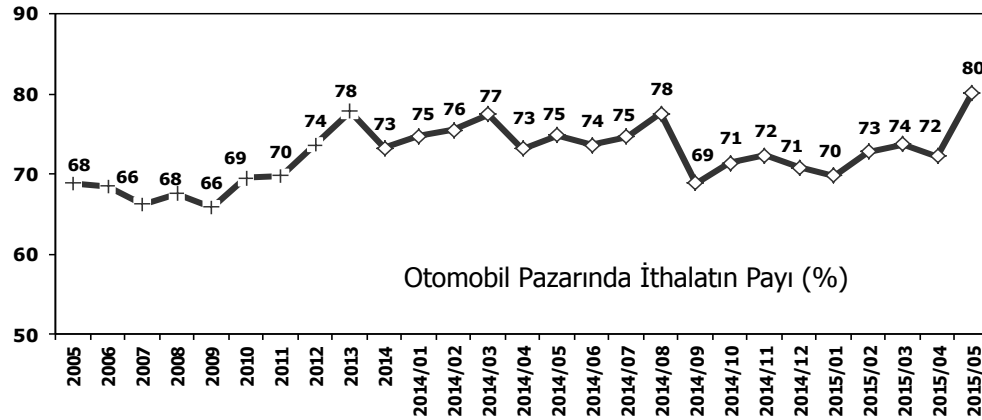


## Hafif Ticari Araçlar Pazarı (2005-2015 Ocak-Mayıs) Light Commercial Vehicle Market (2005-2015 January-May)

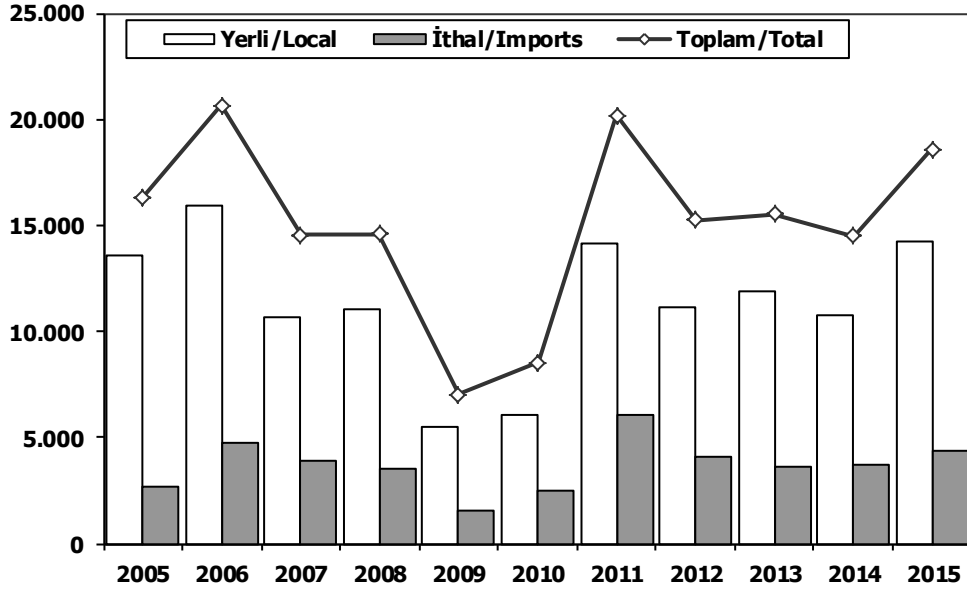


	2005	2006	2007	2008	2009	2010	2011	2012	2013	2014	2015
Yerli/Local	46.882	48.681	35.047	45.725	49.154	46.102	71.737	57.141	50.678	44.465	66.708
İthal/Imports	98.540	118.448	73.958	89.996	99.523	98.117	161.295	136.500	183.138	134.030	193.372
Toplam/Total	145.422	167.129	109.005	135.721	148.677	144.219	233.032	193.641	233.816	178.495	260.080
İthalat/Imports (%)	68	71	68	66	67	68	69	70	78	75	74

	2005	2006	2007	2008	2009	2010	2011	2012	2013	2014	2015
Yerli/Local	50.996	51.833	40.470	43.969	38.754	43.547	58.954	42.417	38.656	23.527	49.988
İthal/Imports	45.003	52.212	35.020	37.036	24.859	29.593	48.313	33.507	35.175	24.676	36.324
Toplam/Total	95.999	104.045	75.490	81.005	63.613	73.140	107.267	75.924	73.831	48.203	86.312
İthalat/Imports (%)	47	50	46	46	39	40	45	44	48	51	42

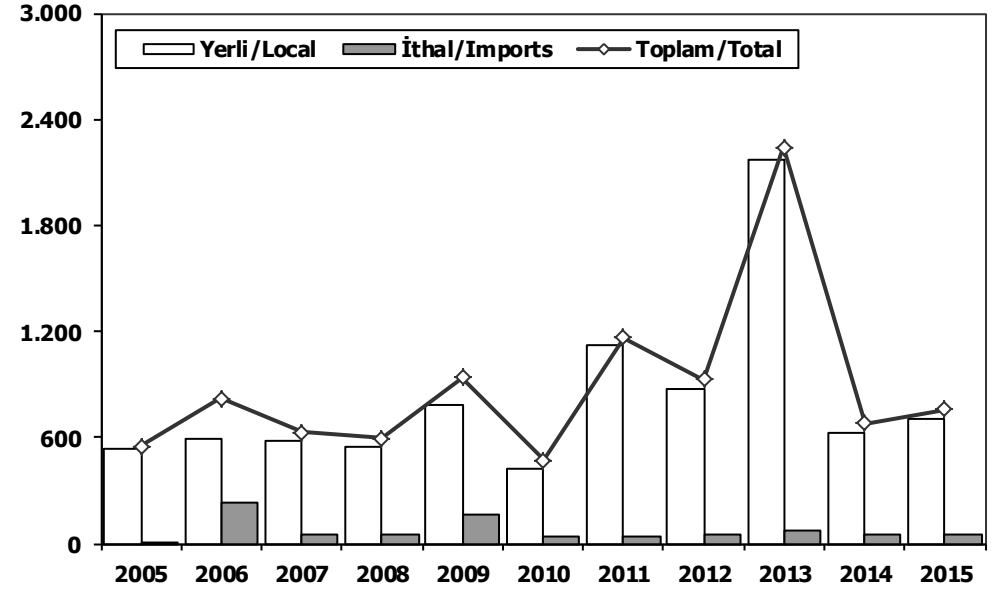


## Ağır Ticari Araçlar Pazarı (2005-2015 Ocak-Mayıs) HCV Market (2005-2015 January-May)



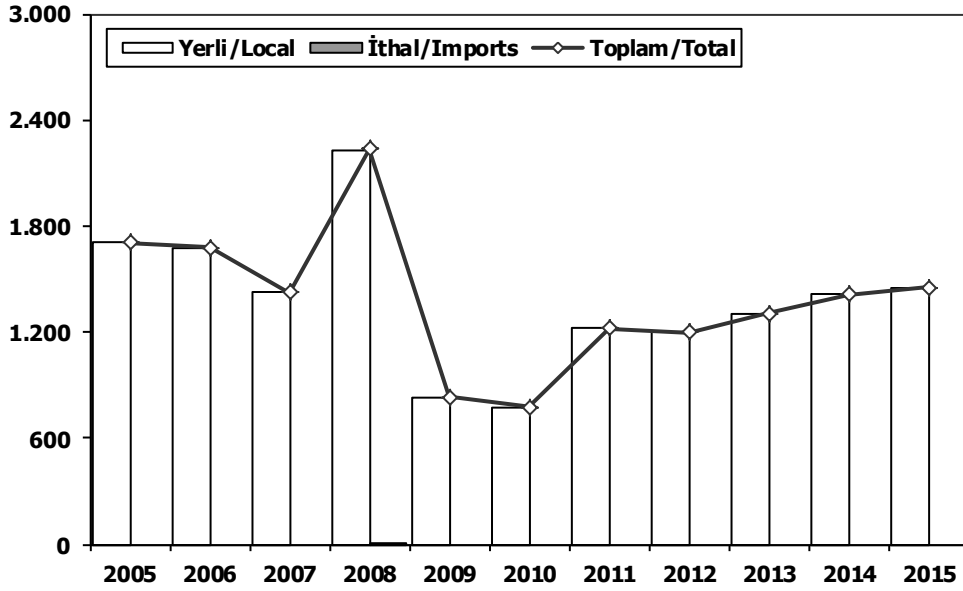
	2005	2006	2007	2008	2009	2010	2011	2012	2013	2014	2015
Yerli/Local	13.596	15.965	10.662	11.046	5.482	6.026	14.101	11.162	11.901	10.725	14.229
İthal/Imports	2.719	4.708	3.871	3.549	1.549	2.513	6.103	4.110	3.647	3.749	4.339
Toplam/Total	16.315	20.673	14.533	14.595	7.031	8.539	20.204	15.272	15.548	14.474	18.568
İthalat/Imports (%)	17	23	27	24	22	29	30	27	23	26	23

## Otobüs Pazarı (2005-2015 Ocak-Mayıs) Bus Market (2005-2015 January-May)

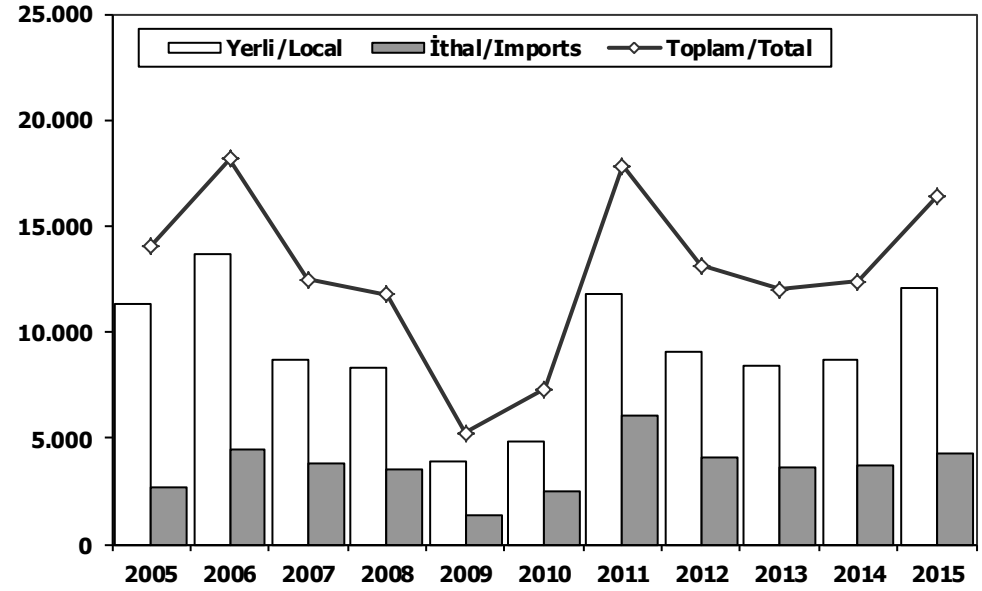


	2005	2006	2007	2008	2009	2010	2011	2012	2013	2014	2015
Yerli/Local	538	587	585	546	779	426	1.124	877	2.171	631	707
İthal/Imports	9	234	46	51	159	45	38	49	70	50	50
Toplam/Total	547	821	631	597	938	471	1.162	926	2.241	681	757
İthalat/Imports (%)	2	29	7	9	17	10	3	5	3	7	7

**Midibüs Pazarı** (2005-2015 Ocak-Mayıs) (7-9 mt / 25-35 Kişilik)  
Midibus (2005-2015 January-May) Market (7-9 mt / 25-35 Passengers)



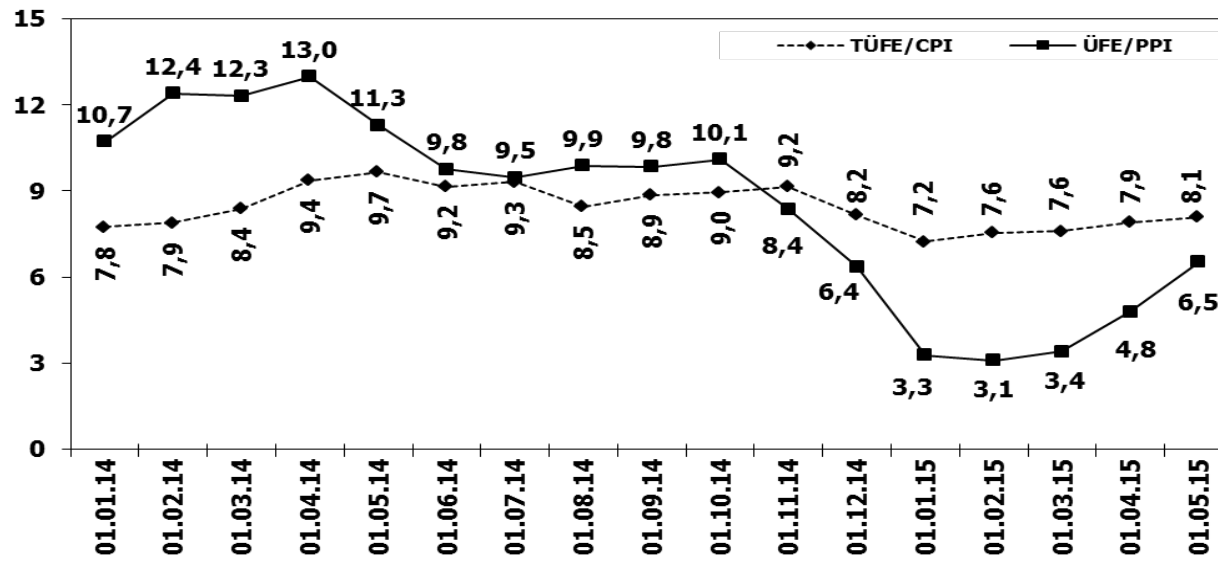
**Kamyon Pazarı** (2005-2015 Ocak-Mayıs)  
Truck Market (2005-2015 January-May)



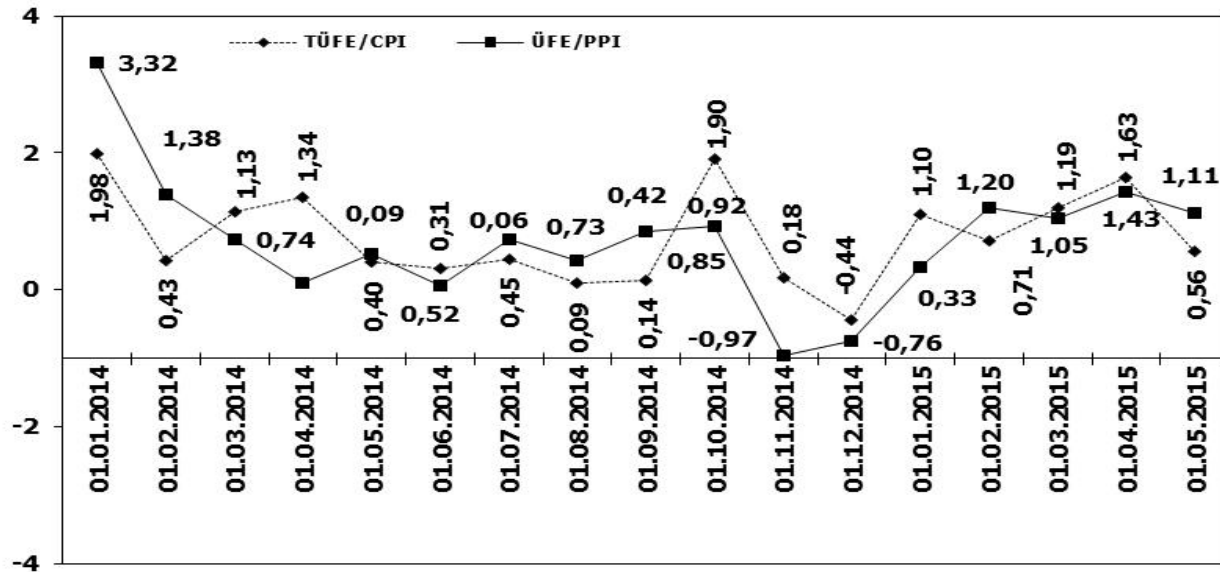
	2005	2006	2007	2008	2009	2010	2011	2012	2013	2014	2015
<b>Yerli/Local</b>	1.704	1.679	1.423	2.224	832	778	1.223	1.199	1.307	1.412	1.453
<b>İthal/Imports</b>	0	0	0	10	0	0	0	0	0	0	0
<b>Toplam/Total</b>	1.704	1.679	1.423	2.234	832	778	1.223	1.199	1.307	1.412	1.453
<b>İthalat/Imports (%)</b>	0	0	0	0	0	0	0	0	0	0	0

	2005	2006	2007	2008	2009	2010	2011	2012	2013	2014	2015
<b>Yerli/Local</b>	11.354	13.699	8.654	8.276	3.871	4.822	11.754	9.086	8.423	8.682	12.069
<b>İthal/Imports</b>	2.710	4.474	3.825	3.488	1.390	2.468	6.065	4.061	3.577	3.699	4.289
<b>Toplam/Total</b>	14.064	18.173	12.479	11.764	5.261	7.290	17.819	13.147	12.000	12.381	16.358
<b>İthalat/Imports (%)</b>	19	25	31	30	26	34	34	31	30	30	26

## TÜFE ve ÜFE'nin Yıllık Değişimi (%) CPI and PPI Yearly Changes (%)



## TÜFE ve ÜFE'nin Aylık Değişimi (%) CPI and PPI Monthly Changes (%)





## 2015 Yılı İthal Hafif Araç Satışları 2015 Light Vehicles Import Sales

2015 YILI İTHAL OTOMOBİL SATIŞLARI / P.Cars Import 2015

FİRMALAR Companies	2014 TOPLAMI 2014 Total	1	2	3	4	5	6	7	8	9	10	11	12	2015 TOPLAMI 2015 Total
VOLKSWAGEN	84.646	4.491	6.942	9.711	10.487	10.793								42.424
FORD	35.682	1.101	2.782	3.636	4.681	4.678								16.878
OPEL	39.255	952	2.239	3.964	4.753	3.943								15.851
DACIA	27.897	1.709	2.289	2.968	2.872	2.918								12.756
B.M.W	26.174	1.219	1.536	2.369	2.717	2.896								10.737
RENAULT	25.572	653	1.309	2.874	1.927	3.566								10.329
PEUGEOT	17.026	846	1.110	2.039	2.635	2.739								9.369
SKODA	14.537	515	1.568	2.120	2.355	2.162								8.720
NISSAN	19.422	949	1.372	1.859	2.304	2.402								8.886
MERCEDES	23.100	417	1.384	2.200	2.135	2.101								8.237
HYUNDAİ	21.685	784	1.011	1.884	2.259	2.392								8.330
AUDI	17.809	610	1.103	1.685	2.006	1.738								7.142
CITROEN	14.389	683	941	1.522	2.077	1.406								6.629
SEAT	12.697	164	1.103	1.496	1.852	1.740								6.355
TOYOTA	10.146	327	535	1.070	1.547	1.006								4.485
KIA	11.017	330	676	1.183	1.245	1.120								4.554
VOLVO	6.060	295	290	657	751	856								2.849
FIAT	6.179	248	377	481	617	382								2.105
JEEP	1.960	239	281	308	383	268								1.479
HONDA	3.269	98	241	273	152	193								957
SUBARU	1.402	65	40	261	176	144								686
LAND ROVER	1.207	31	87	240	94	132								584
MITSUBISHI	1.159	64	64	92	149	105								474
MINI (İngiliz)	1.071	21	47	139	136	143								486
MAZDA	1.291	27	80	49	87	130								373
PROTON	707	55	40	67	70	84								316
ALFA ROMEO	967	34	59	56	76	134								359
PORSCHE	588	45	48	53	47	55								248
CHERY	325	26	38	46	39	35								184
SSANGYONG	531	44	21	31	29	49								174
SUZUKI	958	27	17	20	28	14								106
TATA	126	21	24	21	19	23								108
JAGUAR	52	0	25	50	7	6								88
SMART	76	4	3	10	11	5								33
GEELY	95	4	7	3	6	3								23
MASERATI	83	2	2	3	9	9								25
BENTLEY	21	0	4	1	0	3								8
LAMBORGHINI	2	1	1	2	1	0								5
FERRARI	11	0	0	1	2	2								5
INFINITI	6	1	1	1	0	10								13
LANCIA	210	0	2	0	0	0								2
CHEVROLET	572	0	0	0	0	0								0
<b>TOPLAM</b>	<b>429.982</b>	<b>17.102</b>	<b>29.699</b>	<b>45.445</b>	<b>50.741</b>	<b>50.385</b>	<b>0</b>	<b>0</b>	<b>0</b>	<b>0</b>	<b>0</b>	<b>0</b>	<b>0</b>	<b>193.372</b>

2015 YILI İTHAL HAFİF TİCARİ ARAÇ SATIŞLARI / Light Commercial Vehicles Import 2015

FİRMALAR Companies	2014 TOPLAMI 2014 Total	1	2	3	4	5	6	7	8	9	10	11	12	2015 TOPLAMI 2015 Total
VOLKSWAGEN	24.001	1.336	2.575	3.182	2.680	2.054								11.827
RENAULT	8.716	501	673	1.104	1.030	923								4.231
MERCEDES	8.028	391	424	1.009	654	642								3.120
FIAT	7.664	347	491	782	815	786								3.221
PEUGEOT	5.832	303	403	704	824	738								2.972
CITROEN	6.048	269	392	730	684	301								2.376
DACIA	6.572	250	242	696	642	583								2.413
MITSUBISHI	4.188	390	324	518	246	205								1.683
KIA	2.057	147	221	136	444	0								948
IVECO	2.524	117	139	282	235	210								983
TOYOTA	1.670	73	45	255	207	299								879
HYUNDAİ	1.565	89	104	164	208	142								707
SSANGYONG	626	31	34	69	71	8								213
ISUZU	1.728	27	19	32	59	25								162
TATA	290	22	21	23	21	19								106
FORD	333	22	22	5	22	36								107
NISSAN	275	1	0	0	2	0								3
MAZDA	9	0	0	0	0	0								0
<b>TOPLAM</b>	<b>82.126</b>	<b>4.316</b>	<b>6.129</b>	<b>9.691</b>	<b>8.844</b>	<b>6.971</b>	<b>0</b>	<b>0</b>	<b>0</b>	<b>0</b>	<b>0</b>	<b>0</b>	<b>0</b>	<b>35.951</b>