



AYLIK RAPOR

Automotive Industry Monthly Report

Kasım / November 2014

- **Üretim**/Production
- **Satış**/Sales
- **İthalat**/Imports
- **İhracat**/Exports

OSD "OICA" Üyesidir



OSD is a Member of "OICA"

2014 Kasım Ayı Özeti / 2014 November Summary

KONULAR/ MATTERS		KASIM / NOVEMBER			11 AY/ 11 MONTHS			SON 12 AYLIK / YoY		
		2013	2014	2014/2013 (%)	2013	2014	2014/2013 (%)	2013	2014	2014/2013 (%)
Üretim/ Production	Toplam/ Total	113.646	113.093	0	1.042.368	1.049.852	1	1.129.312	1.133.018	0
	Otomobil/ P.Cars	66.155	69.466	5	582.669	662.959	14	627.377	713.894	14
Pazar/ Market	Toplam/ Total	83.017	83.875	1	757.528	653.490	-14	878.641	789.086	-10
	Otomobil/ P.Cars	64.117	59.695	-7	563.456	477.277	-15	644.382	578.476	-10
İthalat/ Import	Toplam/ Total	57.407	52.196	-9	523.179	428.768	-18	599.221	521.198	-13
	Otomobil/ P.Cars	49.474	43.156	-13	438.550	352.017	-20	500.407	430.994	-14
İhracat/ Export	Toplam/ Total	79.793	80.564	1	763.472	802.872	5	828.400	867.871	5
	Otomobil/ P.Cars	47.271	51.528	9	441.670	529.633	20	477.595	572.467	20
İhracat / Export (\$)	Toplam/ Total **	2.117.981.243	1.866.232.679	-12	19.758.078.043	20.945.290.080	6	21.401.455.669	22.748.463.196	6
	Otomobil/ P.Cars	659.305.662	594.692.909	-10	6.331.914.385	6.702.649.165	6	6.891.612.576	7.226.132.061	5
PARAMETRELER / PARAMETERS		KASIM / NOVEMBER			11 AY/ 11 MONTHS			SON 12 AYLIK / YoY		
		2013	2014	2014/2013 (%)	2013	2014	2014/2013 (%)	2013	2014	2014/2013 (%)
ÜFE/ PPI		0,62	-0,97	**	5,80	7,18	**	5,67	8,36	**
TÜFE/ CPI		0,01	0,18	**	6,91	8,65	**	7,32	9,15	**
Sanayi Endeksi/ Industry Index		0,57	-0,84	**	5,97	8,19	**	5,89	9,08	**
\$ (*)		2,0160	2,2087	10	1,9145	2,1790	14	1,9038	2,1751	14
EURO (*)		2,7435	2,7516	0	2,5323	2,8973	14	2,5177	2,9004	15
Japon Yeni (*)		1,9600	1,8582	-5	1,9576	2,0668	6	1,9673	2,0625	5

(*) Ortalama Değerler / Average Values

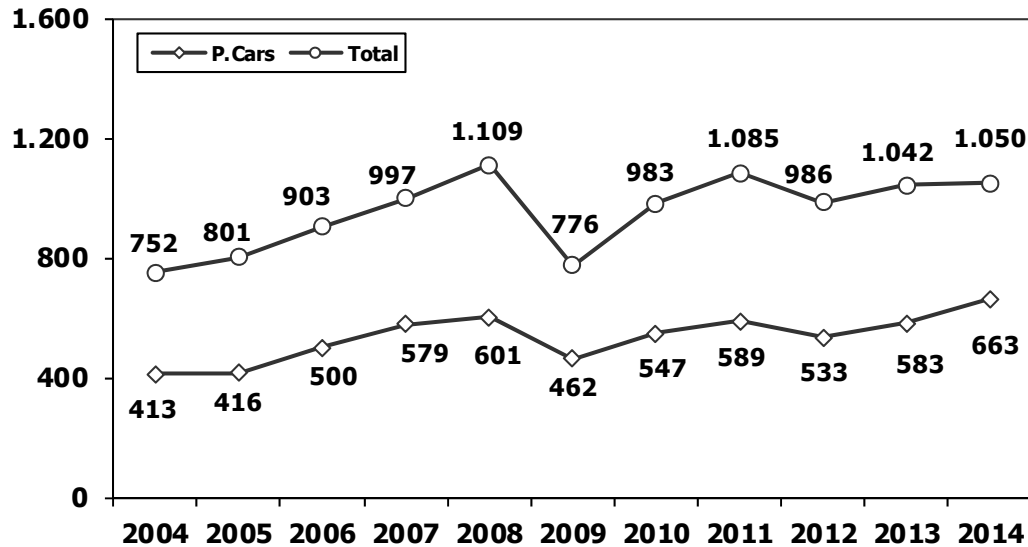
(**) Toplam Sanayi / Total Industry Including Components

2013/2014 Yılları Üretim 2013/2014 Production

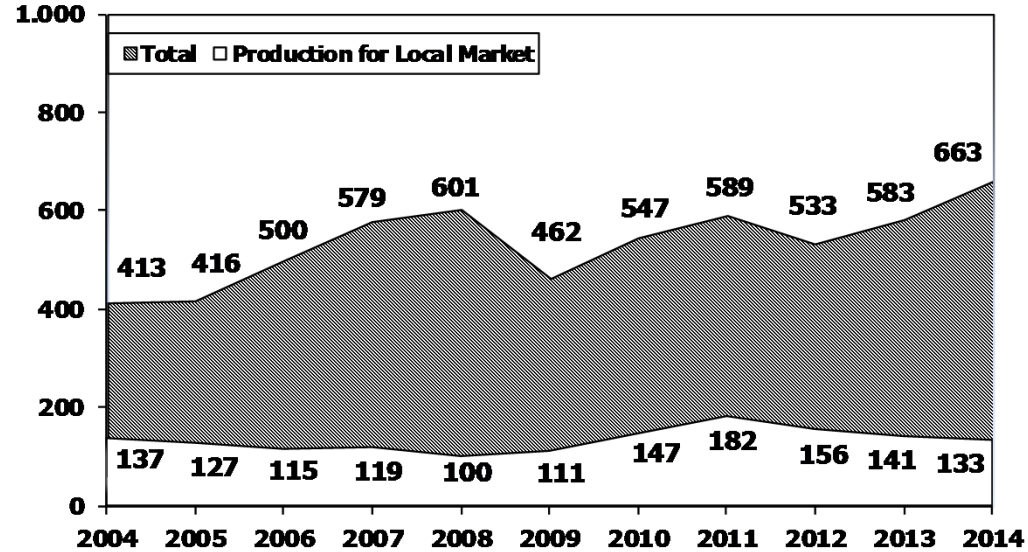
K.KAMYON : AYA 3.5-12 Ton (L.Truck:GWV 3.5-12 Ton)
B.KAMYON : AYA 12 Ton'dan Büyük (M.Truck:GWV 12 Ton And Up)

TİPLER	KASIM AYI ÜRETİMİ November Production		11 AYLIK ÜRETİM 11 Months Production		DEĞİŞİM % Percent Change %	
	2013	2014	2013	2014	KASIM November	11 AY 11 Months
OTOMOBİL - Pass.Car	66.155	69.466	582.669	662.959	5	14
TİCARİ ARAÇLAR - Commercial Vehicles	47.491	43.627	459.699	386.893	-8	-16
* B. KAMYON - M. Truck	2.024	2.364	23.227	23.839	17	3
* K. KAMYON - L. Truck	484	276	4.047	2.940	-43	-27
* KAMYONET - Pick Up	39.484	36.276	383.874	318.021	-8	-17
* OTOBÜS - Bus	574	582	7.829	5.909	1	-25
* MİNİBÜS - Minibus	4.346	3.857	35.888	31.328	-11	-13
* MİDİBÜS - Midibus	579	272	4.834	4.856	-53	0
TAŞIT ARAÇLARI TOPLAM - MV Total	113.646	113.093	1.042.368	1.049.852	0	1
TRAKTÖR - F.Tractor	4.185	4.324	37.636	45.076	3	20
GENEL TOPLAM - Grand Total	117.831	117.417	1.080.004	1.094.928	0	1

Toplam Üretim ve Otomobil Üretimi (x1000) (Ocak-Kasım)
Total & P.Cars Production (x1000) (January- November)



Otomobil Üretimi ve İhracat (x1000) (Ocak-Kasım)
P.Cars Production & Exports (x1000) (January- November)



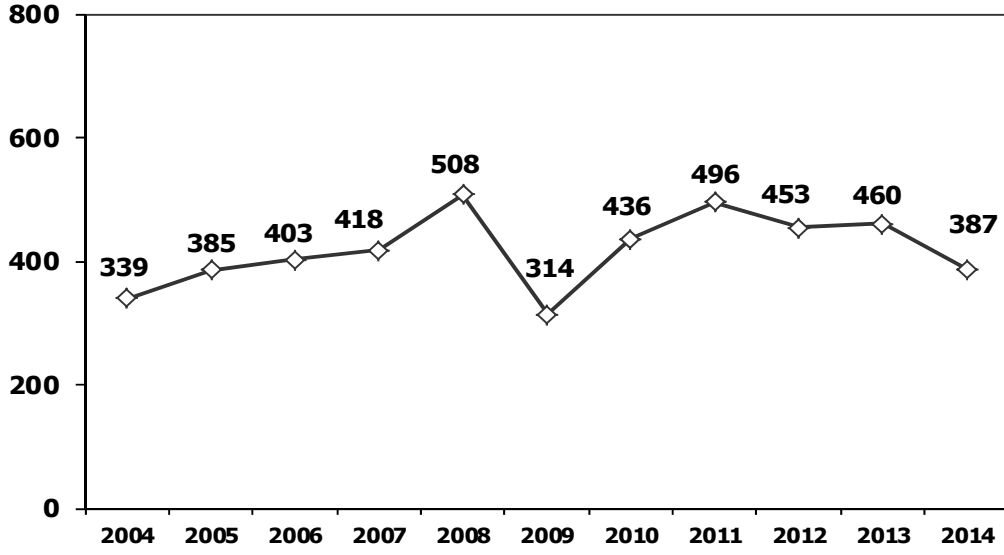
11 Aylık Üretim (11 Monrths Production)

FİRMALAR Companies	OTOMOBİL Pass.Car	%	K.KAMYON L.Truck	%	B.KAMYON Mid.Truck	%	KAMYONET Pick Up	%	OTOBÜS Bus	%	MİNİBÜS Mini-Bus	%	MİDİBÜS Midi-Bus	%	TRAKTÖR F.Tractor	%	TOPLAM Totals
A.I.O.S.	0	0	2.633	90	0	0	2.342	1	120	2	0	0	1.654	34	0	0	6.749
FORD OTOSAN	9.054	1	0	0	6.846	29	171.832	54	0	0	29.868	95	0	0	0	0	217.600
HATTAT TARIM	0	0	0	0	0	0	0	0	0	0	0	0	0	0	2.463	5	2.463
HONDA TÜRKİYE	10.913	2	0	0	0	0	0	0	0	0	0	0	0	0	0	0	10.913
HYUNDAI ASSAN	182.322	28	0	0	0	0	0	0	0	0	0	0	0	0	0	0	182.322
KARSAN	0	0	0	0	3	0	15	0	43	1	1.449	5	77	2	0	0	1.587
M. BENZ TÜRK	0	0	0	0	16.990	71	0	0	3.383	57	0	0	0	0	0	0	20.373
MANTÜRKİYE	0	0	0	0	0	0	0	0	970	16	0	0	0	0	0	0	970
OTOKAR	0	0	307	10	0	0	326	0	379	6	11	0	1.827	38	0	0	2.850
OYAK RENAULT	287.189	43	0	0	0	0	0	0	0	0	0	0	0	0	0	0	287.189
TEMSA GLOBAL	0	0	0	0	0	0	0	0	1.014	17	0	0	1.298	27	0	0	2.312
TOFAŞ	53.847	8	0	0	0	0	143.506	45	0	0	0	0	0	0	0	0	197.353
TOYOTA	119.634	18	0	0	0	0	0	0	0	0	0	0	0	0	0	0	119.634
TÜRK TRAKTÖR	0	0	0	0	0	0	0	0	0	0	0	0	0	0	42.613	95	42.613
TOPLAM	662.959	100	2.940	100	23.839	100	318.021	100	5.909	100	31.328	100	4.856	100	45.076	100	1.094.928

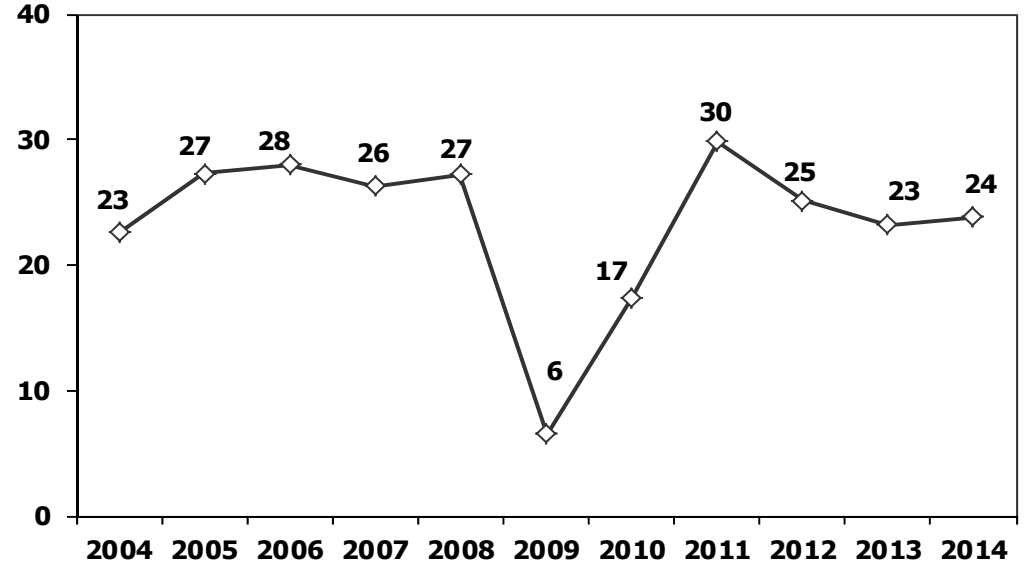
Kasım Ayı Üretimi (November Production)

FİRMALAR Companies	OTOMOBİL Pass.Car	%	K.KAMYON L.Truck	%	B.KAMYON Mid.Truck	%	KAMYONET Pick Up	%	OTOBÜS Bus	%	MİNİBÜS Mini-Bus	%	MİDİBÜS Midi-Bus	%	TRAKTÖR F.Tractor	%	TOPLAM Totals
A.I.O.S.	0	0	272	99	0	0	355	1	24	4	0	0	133	49	0	0	784
FORD OTOSAN	1.614	2	0	0	713	30	19.897	55	0	0	3.653	95	0	0	0	0	25.877
HATTAT	0	0	0	0	0	0	0	0	0	0	0	0	0	0	225	5	225
HONDA TÜRKİYE	960	1	0	0	0	0	0	0	0	0	0	0	0	0	0	0	960
HYUNDAI ASSAN	18.800	27	0	0	0	0	0	0	0	0	0	0	0	0	0	0	18.800
KARSAN	0	0	0	0	0	0	0	0	0	0	204	5	0	0	0	0	204
M. BENZ TÜRK	0	0	0	0	1.651	70	0	0	373	64	0	0	0	0	0	0	2.024
MANTÜRKİYE	0	0	0	0	0	0	0	0	99	17	0	0	0	0	0	0	99
OTOKAR	0	0	4	1	0	0	81	0	30	5	0	0	74	27	0	0	189
OYAK RENAULT	32.089	46	0	0	0	0	0	0	0	0	0	0	0	0	0	0	32.089
TEMSA	0	0	0	0	0	0	0	0	56	10	0	0	65	24	0	0	121
TOFAŞ	5.165	7	0	0	0	0	15.943	44	0	0	0	0	0	0	0	0	21.108
TOYOTA	10.838	16	0	0	0	0	0	0	0	0	0	0	0	0	0	0	10.838
TÜRK TRAKTÖR	0	0	0	0	0	0	0	0	0	0	0	0	0	0	4.099	95	4.099
TOPLAM	69.466	100	276	100	2.364	100	36.276	100	582	100	3.857	100	272	100	4.324	100	117.417

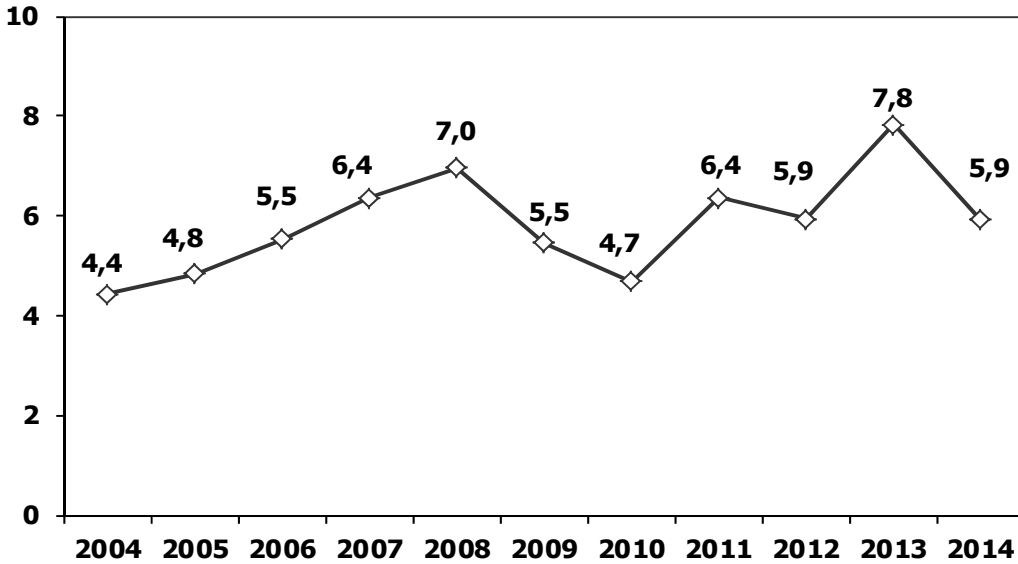
Ticari Araç Üretimi (x1000) (Ocak-Kasım)
Commercial Vehicle Production (x1000) (January- November)



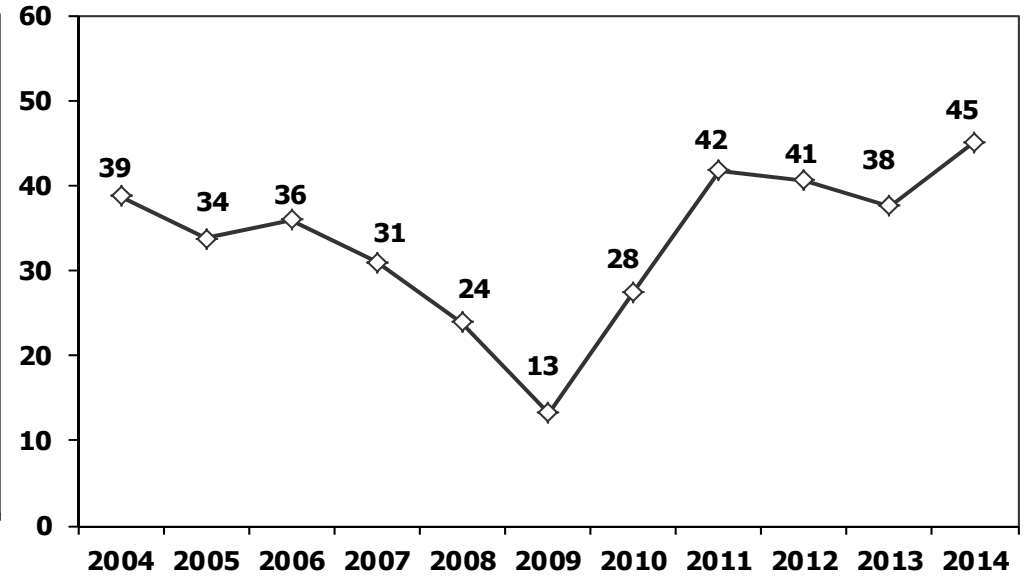
(AYA >12 Ton) **Büyük Kamyon Üretimi** (x1000) (Ocak-Kasım)
(GVW >12 Ton) Heavy Truck Production (x1000) (January- November)



Otobüs Üretimi (x1000) (Ocak-Kasım)
Bus Production (x1000) (January- November)

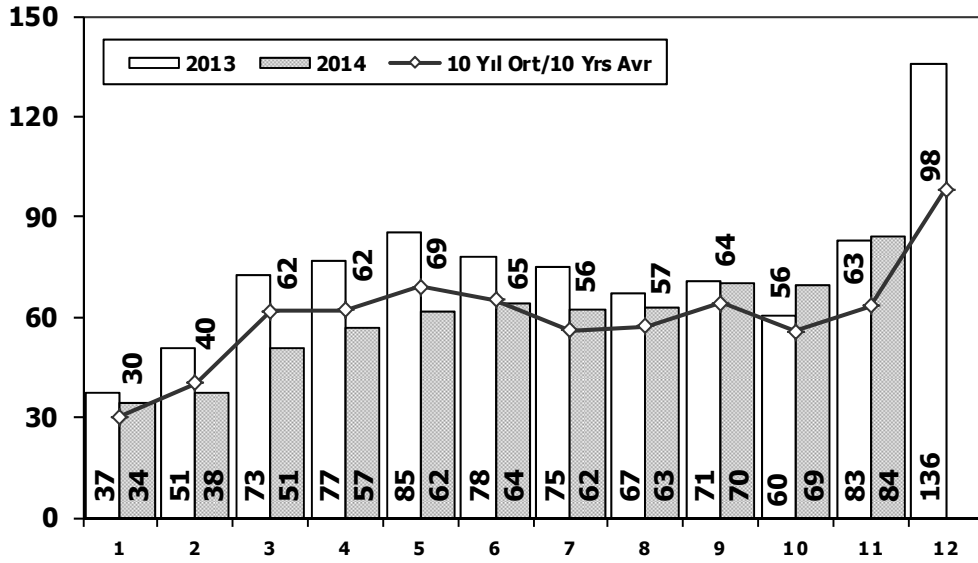


Traktör Üretimi (x1000) (Ocak-Kasım)
F. Tractor Production (x1000) (January- November)



Toplam Pazarın Analizi (x1000)

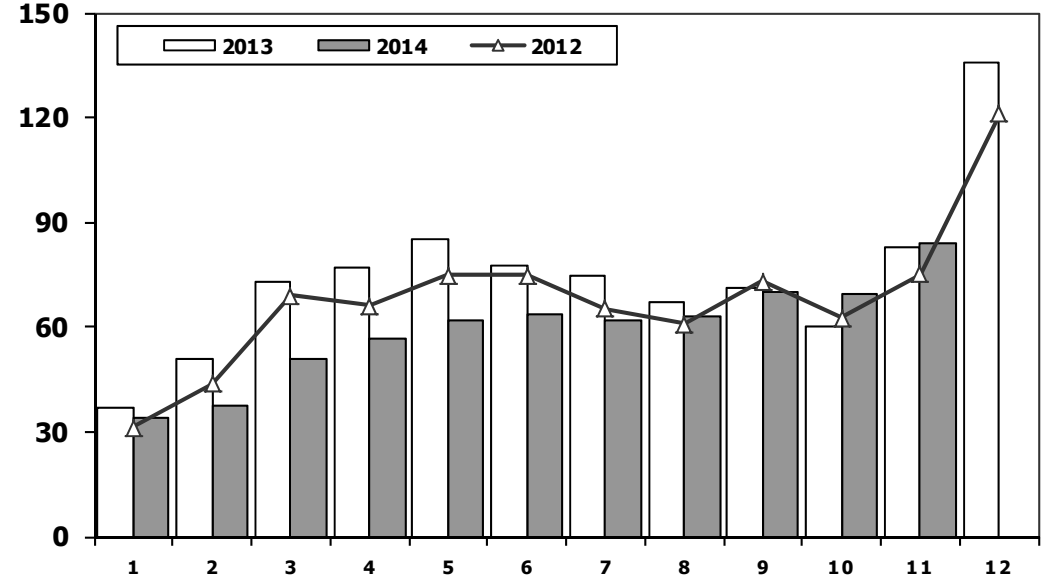
Total Market Analysis (x1000)



Aylar / Months	10 Yil Ort. 10 Yrs Avr. (x1000)	2014 (x1000)	%
1	30,3	34,3	13,0
2	40,3	37,5	-6,8
3	61,8	50,9	-17,7
4	62,0	56,7	-8,4
5	69,1	61,9	-10,5
6	65,2	63,9	-2,1
7	56,0	62,2	11,0
8	57,1	62,8	10,1
9	64,1	70,2	9,5
10	55,6	69,3	24,7
11	63,3	83,9	32,6
Total	624,8	653,5	4,6

Toplam Pazar (x1000)

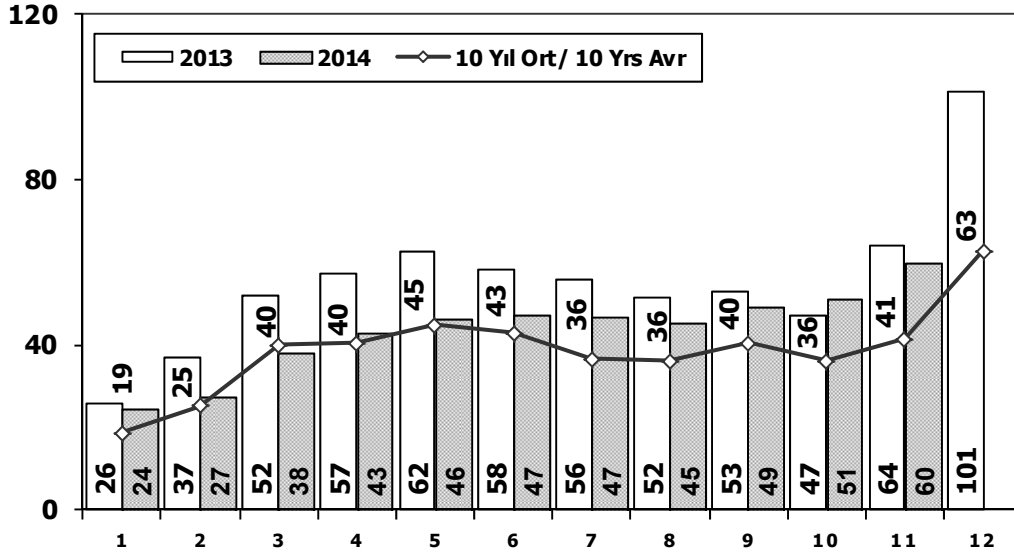
Total Market (x1000)



	1	2	3	4	5	6	7	8	9	10	11	12	11 Ay/Mo	Total
2004	38.621	39.389	71.723	77.056	84.634	63.228	57.307	56.422	59.429	56.153	52.237	85.070	656.199	741.269
2005	22.687	38.291	64.502	60.873	71.383	64.379	63.847	68.647	66.580	60.791	65.719	110.838	647.699	758.537
2006	29.969	44.646	65.090	68.853	83.289	58.203	40.037	47.374	49.629	39.805	55.898	82.722	582.793	665.515
2007	24.950	31.702	45.488	45.633	51.255	51.661	50.117	54.171	50.078	56.058	67.017	106.076	528.130	634.206
2008	33.792	38.121	56.814	50.967	51.627	49.393	44.692	46.592	46.829	35.147	28.152	44.418	482.126	526.544
2009	20.631	22.846	56.531	54.426	64.887	63.102	30.246	37.092	83.403	22.117	29.202	91.386	484.483	575.869
2010	21.050	32.313	53.828	57.079	61.628	63.390	63.718	64.645	66.601	76.780	77.406	154.734	638.438	793.172
2011	47.658	62.348	83.333	82.071	85.093	85.863	65.364	61.378	63.643	72.640	67.195	134.281	776.586	910.867
2012	31.219	43.827	68.957	66.014	74.820	74.781	65.122	60.848	73.197	62.677	75.045	121.113	696.507	817.620
2013	37.140	50.931	72.688	77.015	85.421	77.771	74.726	67.383	71.037	60.399	83.017	135.596	757.528	893.124
2014	34.290	37.500	50.850	56.744	61.865	63.880	62.192	62.837	70.186	69.271	83.875	0	653.490	653.490

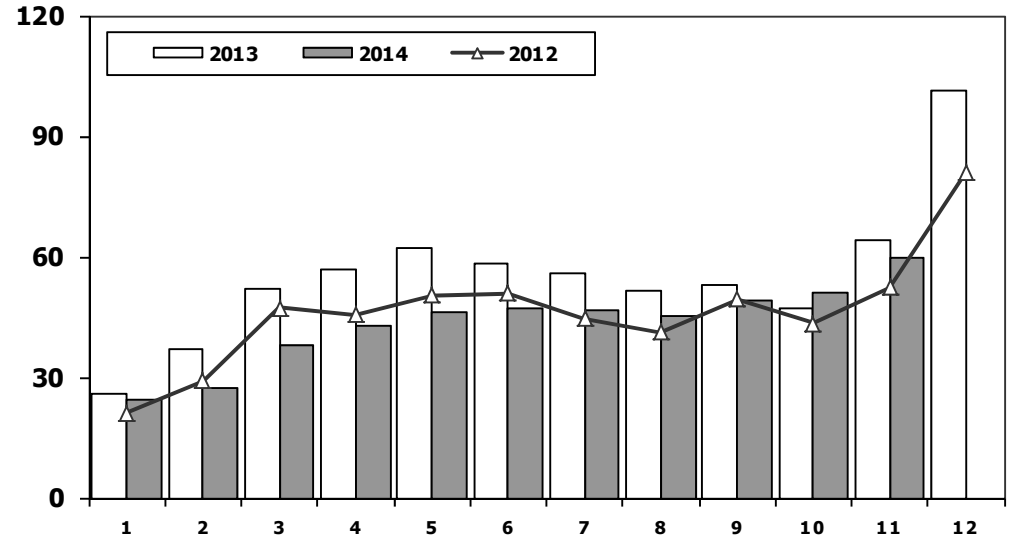
Otomobil Pazarının Analizi (x1000)

P.Cars Market Analysis (x1000)



Otomobil Pazarı (x1000)

P.Cars Market (x1000)

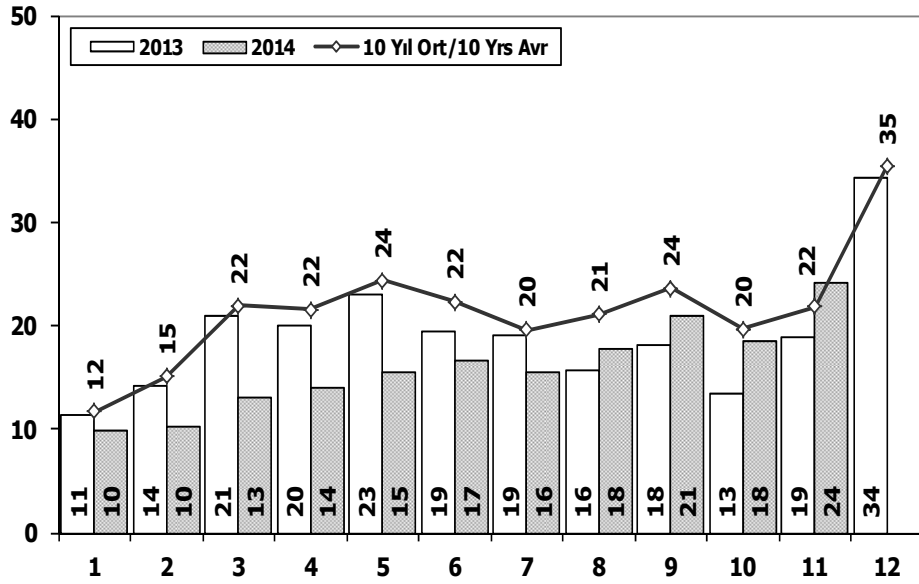


Aylar / Months	10 Yil Ort. 10 Yrs Avr. (x1000)	2014 (x1000)	%
1	18,7	24,4	30,5
2	25,2	27,2	7,9
3	39,9	37,8	-5,3
4	40,4	42,8	5,9
5	44,8	46,4	3,6
6	42,9	47,3	10,2
7	36,4	46,6	28,1
8	36,0	45,1	25,5
9	40,5	49,3	21,7
10	35,9	50,8	41,5
11	41,4	59,7	44,2
Total	401,9	477,3	18,7

	1	2	3	4	5	6	7	8	9	10	11	12	11 Ay/Mo	Total
2004	25.625	23.695	46.075	47.995	54.610	37.671	33.410	33.709	33.383	34.292	30.547	50.197	401.012	451.209
2005	11.595	21.012	38.129	36.206	38.480	40.900	38.969	38.648	36.410	34.960	37.841	65.447	373.150	438.597
2006	16.506	24.929	36.996	40.177	48.521	32.982	22.653	24.873	27.517	21.237	30.477	46.351	326.868	373.219
2007	13.186	17.212	24.336	25.204	29.067	30.126	28.246	28.469	27.662	32.569	39.643	61.745	295.720	357.465
2008	18.588	21.196	34.147	30.313	31.477	28.724	25.530	26.102	27.053	19.788	17.201	25.879	280.119	305.998
2009	13.173	14.492	40.622	36.202	44.188	41.019	16.637	22.537	52.162	13.828	17.781	57.178	312.641	369.819
2010	12.594	20.651	33.958	36.549	40.467	42.086	41.399	42.222	42.477	47.859	50.061	99.461	410.323	509.784
2011	29.868	39.004	54.023	53.835	56.302	56.714	43.518	38.875	39.964	47.508	44.951	88.957	504.562	593.519
2012	21.077	29.189	47.270	45.645	50.460	50.849	44.531	41.236	49.360	43.440	52.297	80.926	475.354	556.280
2013	25.835	36.814	51.785	56.999	62.383	58.290	55.712	51.611	52.925	46.985	64.117	101.199	563.456	664.655
2014	24.368	27.167	37.812	42.769	46.379	47.278	46.602	45.131	49.262	50.814	59.695	0	477.277	477.277

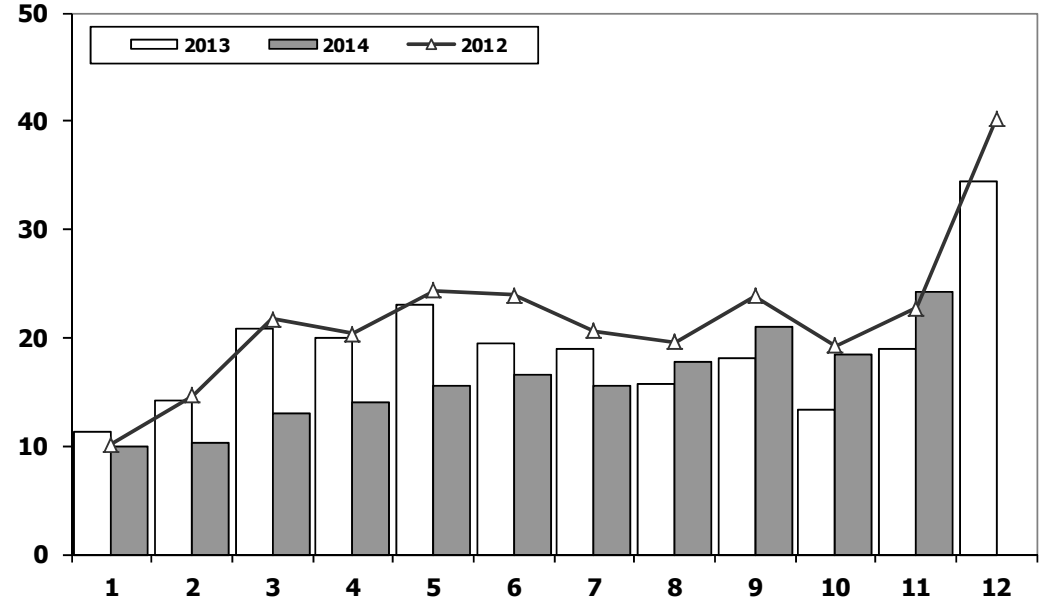
Ticari Araç Pazarının Analizi (x1000)

CV Market Analysis (x1000)



Ticari Araç Pazarı (x1000)

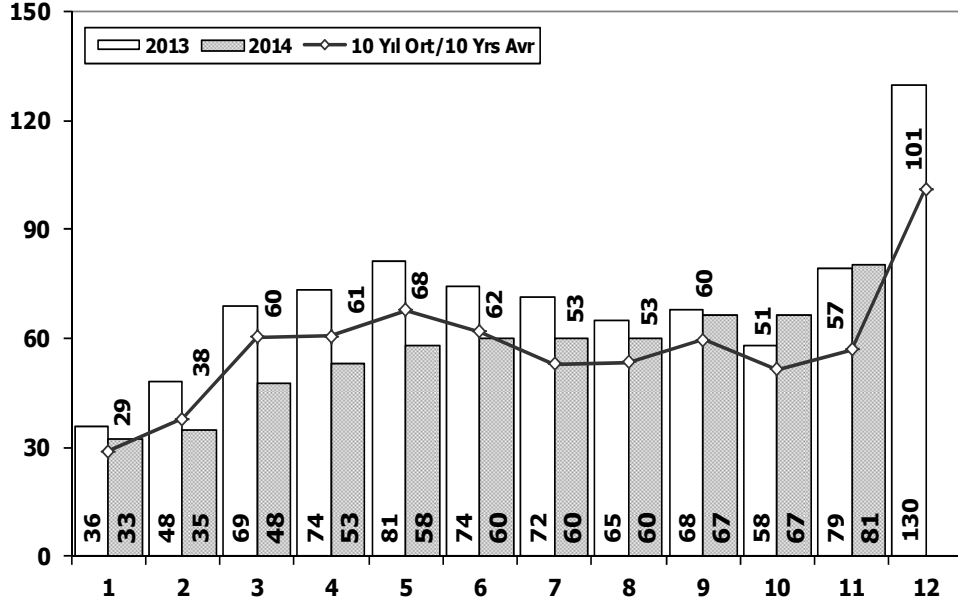
CV Total Market (Local + Imports) (x1000)



Aylar / Months	10 Yil Ort. 10 Yrs Avr. (x1000)	2014 (x1000)	%
1	11,7	9,9	-14,9
2	15,1	10,3	-31,5
3	21,9	13,0	-40,5
4	21,6	14,0	-35,2
5	24,4	15,5	-36,4
6	22,3	16,6	-25,7
7	19,6	15,6	-20,6
8	21,1	17,7	-16,2
9	23,6	20,9	-11,5
10	19,7	18,5	-6,2
11	21,8	24,2	10,7
Total	222,8	176,2	-20,9

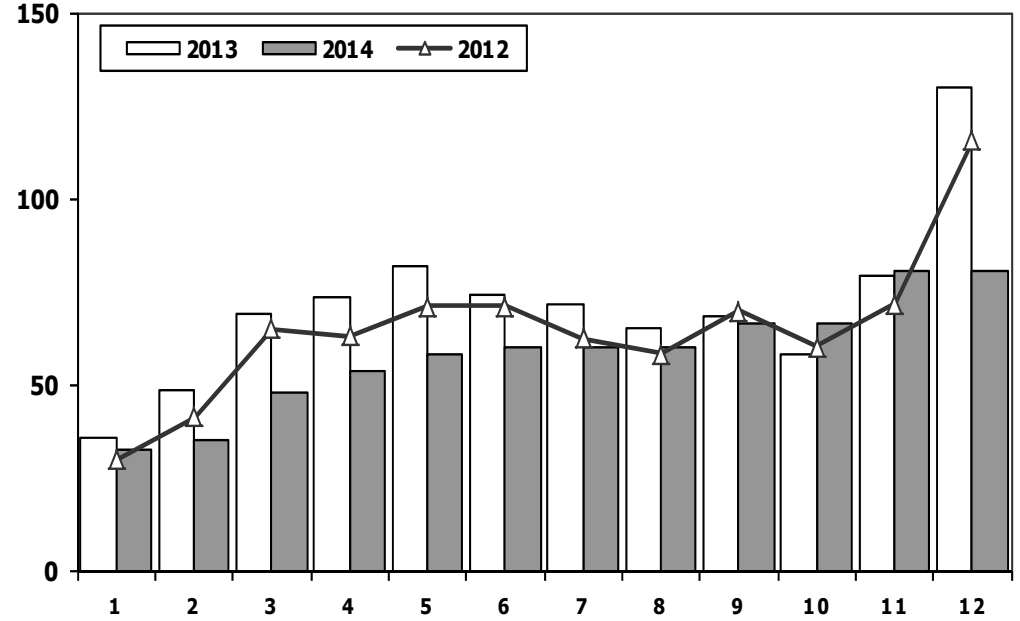
	1	2	3	4	5	6	7	8	9	10	11	12	11 Ay/Mo	Total
2004	12.996	15.694	25.648	29.061	30.024	25.557	23.897	22.713	26.046	21.861	21.690	34.873	255.187	290.060
2005	11.092	17.279	26.373	24.667	32.903	23.479	24.878	29.999	30.170	25.831	27.878	45.391	274.549	319.940
2006	13.463	19.717	28.094	28.676	34.768	25.221	17.384	22.501	22.112	18.568	25.421	36.371	255.925	292.296
2007	11.764	14.490	21.152	20.429	22.188	21.535	21.871	25.702	22.416	23.489	27.374	44.331	232.410	276.741
2008	15.204	16.925	22.667	20.654	20.150	20.669	19.162	20.490	19.776	15.359	10.951	18.539	202.007	220.546
2009	7.458	8.354	15.909	18.224	20.699	22.083	13.609	14.555	31.241	8.289	11.421	34.208	171.842	206.050
2010	8.456	11.662	19.870	20.530	21.161	21.304	22.319	22.423	24.124	28.921	27.345	55.273	228.115	283.388
2011	17.790	23.344	29.310	28.236	28.791	29.149	21.846	22.503	23.679	25.132	22.244	45.324	272.024	317.348
2012	10.142	14.638	21.687	20.369	24.360	23.932	20.591	19.612	23.837	19.237	22.748	40.187	221.153	261.340
2013	11.305	14.117	20.903	20.016	23.038	19.481	19.014	15.772	18.112	13.414	18.900	34.397	194.072	228.469
2014	9.922	10.333	13.038	13.975	15.486	16.602	15.590	17.706	20.924	18.457	24.180	0	176.213	176.213

Hafif Araç Pazarının Analizi (x1000)
LV Market Analysis (x1000)



Aylar / Months	10 Yil Ort. 10 Yrs Avr. (x1000)	2014 (x1000)	%
1	28,9	32,7	12,9
2	37,9	35,0	-7,7
3	60,2	47,6	-21,0
4	60,6	53,3	-12,0
5	67,8	58,1	-14,3
6	61,9	60,2	-2,7
7	53,0	59,9	13,1
8	53,4	60,2	12,8
9	59,7	66,5	11,4
10	51,4	66,6	29,6
11	56,9	80,6	41,8
Total	591,7	620,7	4,9

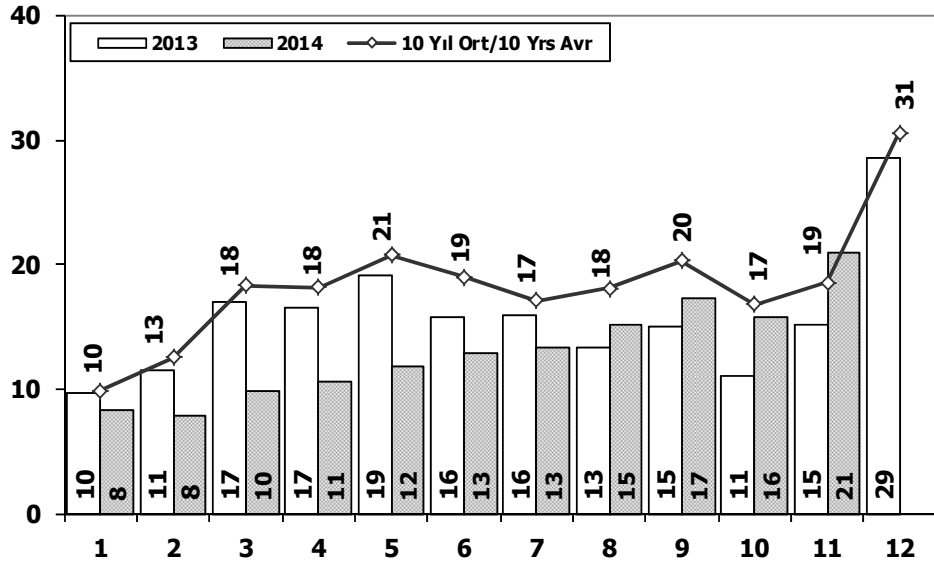
Hafif Araç Pazarı (x1000)
LV Total Market (Local + Imports) (x1000)



	1	2	3	4	5	6	7	8	9	10	11	12	11 Ay/Mo	Total
2004	36.352	37.079	67.144	73.075	80.290	59.730	54.816	52.876	55.609	53.000	49.200	78.924	619.171	698.095
2005	20.747	35.766	60.707	56.844	67.357	60.796	61.015	64.011	61.954	56.638	61.364	103.209	607.199	710.408
2006	27.917	40.938	60.052	64.038	78.229	54.355	37.251	43.767	46.109	36.542	51.867	76.787	541.065	617.852
2007	23.117	29.184	41.890	42.366	47.938	48.674	47.490	50.558	46.581	52.725	63.313	100.926	493.836	594.762
2008	31.527	35.251	53.649	47.701	48.598	46.324	42.156	43.670	43.932	32.884	26.253	42.078	451.945	494.023
2009	19.606	21.742	55.111	52.640	63.191	61.067	28.845	35.609	81.397	21.033	27.962	88.923	468.203	557.126
2010	20.095	31.172	51.769	54.946	59.377	60.896	61.345	61.764	63.814	73.404	73.962	148.369	612.544	760.913
2011	44.892	58.663	78.403	77.695	80.646	81.573	63.044	58.406	60.129	69.421	63.657	127.910	736.529	864.439
2012	29.545	41.324	64.884	62.949	70.863	71.067	62.304	58.148	69.629	59.938	71.710	115.400	662.361	777.761
2013	35.523	48.307	68.774	73.575	81.468	74.096	71.596	65.043	67.963	58.014	79.301	129.718	723.660	853.378
2014	32.670	35.021	47.581	53.305	58.121	60.163	59.907	60.199	66.531	66.573	80.621	0	620.692	620.692

Hafif Ticari Araç Pazarının Analizi (x1000)

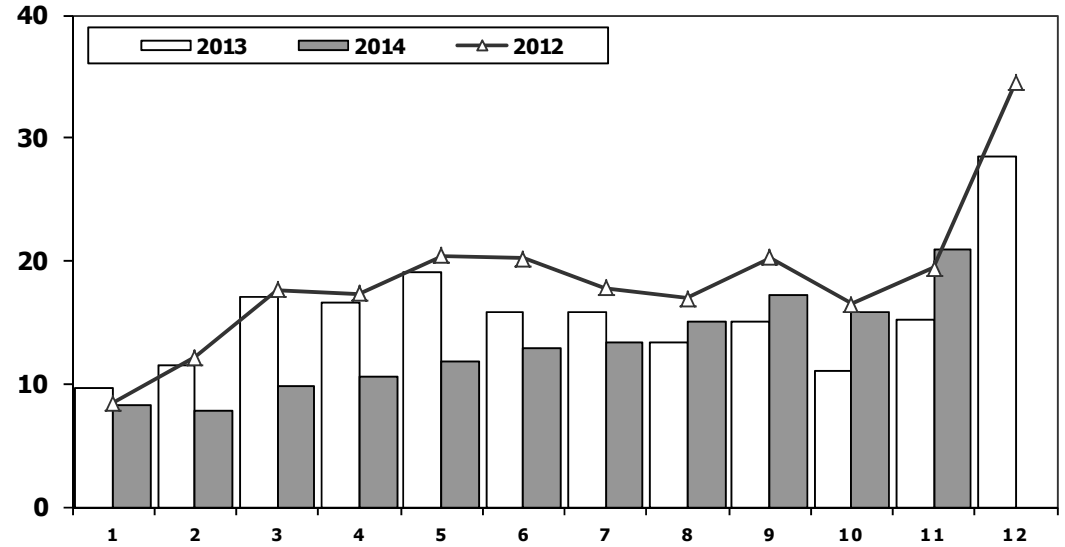
LCV Market Analysis (x1000)



Aylar / Months	10 Yil Ort. 10 Yrs Avr. (x1000)	2014 (x1000)	%
1	9,9	8,3	-16,0
2	12,6	7,9	-37,5
3	18,4	9,8	-46,8
4	18,2	10,5	-42,2
5	20,8	11,7	-43,6
6	19,0	12,9	-32,2
7	17,1	13,3	-22,3
8	18,1	15,1	-17,0
9	20,3	17,3	-15,0
10	16,8	15,8	-6,3
11	18,6	20,9	12,5
Total	189,9	143,4	-24,5

Hafif Ticari Araç Pazarı (x1000)

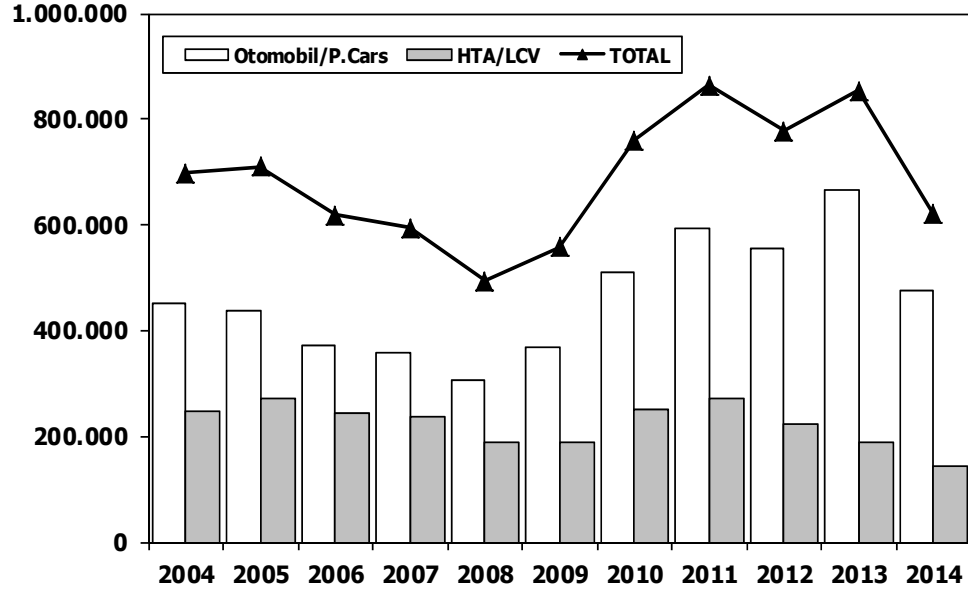
LCV Total Market (Local + Imports) (x1000)



	1	2	3	4	5	6	7	8	9	10	11	12	11 Ay/Mo	Total
2004	10.727	13.384	21.069	25.080	25.680	22.059	21.406	19.167	22.226	18.708	18.653	28.727	218.159	246.886
2005	9.152	14.754	22.578	20.638	28.877	19.896	22.046	25.363	25.544	21.678	23.523	37.762	234.049	271.811
2006	11.411	16.009	23.056	23.861	29.708	21.373	14.598	18.894	18.592	15.305	21.390	30.436	214.197	244.633
2007	9.931	11.972	17.554	17.162	18.871	18.548	19.244	22.089	18.919	20.156	23.670	39.181	198.116	237.297
2008	12.939	14.055	19.502	17.388	17.121	17.600	16.626	17.568	16.879	13.096	9.052	16.199	171.826	188.025
2009	6.433	7.250	14.489	16.438	19.003	20.048	12.208	13.072	29.235	7.205	10.181	31.745	155.562	187.307
2010	7.501	10.521	17.811	18.397	18.910	18.810	19.946	19.542	21.337	25.545	23.901	48.908	202.221	251.129
2011	15.024	19.659	24.380	23.860	24.344	24.859	19.526	19.531	20.165	21.913	18.706	38.953	231.967	270.920
2012	8.468	12.135	17.614	17.304	20.403	20.218	17.773	16.912	20.269	16.498	19.413	34.474	187.007	221.481
2013	9.688	11.493	16.989	16.576	19.085	15.806	15.884	13.432	15.038	11.029	15.184	28.519	160.204	188.723
2014	8.302	7.854	9.769	10.536	11.742	12.885	13.305	15.068	17.269	15.759	20.926	0	143.415	143.415

Hafif Arac Pazarı (AYA < 3.5 Ton)

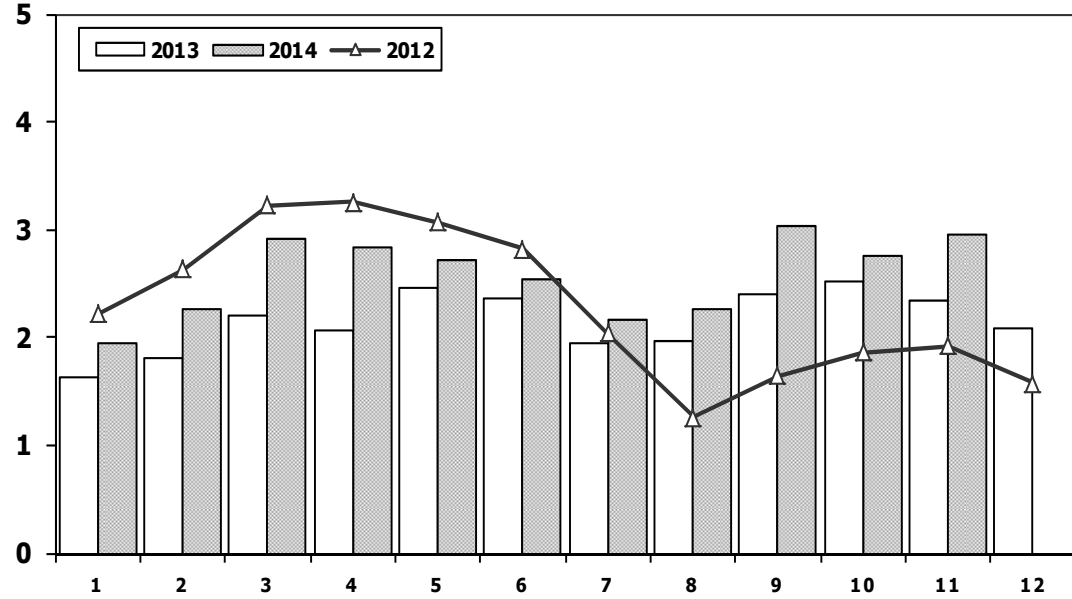
Light Vehicle Market (GVW < 3.5 Ton)



	2004	2005	2006	2007	2008	2009	2010	2011	2012	2013	2014
Otomobil/P.Cars	451.209	438.597	373.219	357.465	305.998	369.819	509.784	593.519	556.280	664.655	477.277
HTA/LCV	246.886	271.811	244.633	237.297	188.025	187.307	251.129	270.920	221.481	188.723	143.415
TOTAL	698.095	710.408	617.852	594.762	494.023	557.126	760.913	864.439	777.761	853.378	620.692
HTA/LCV (%)	35	38	40	40	38	34	33	31	28	22	23

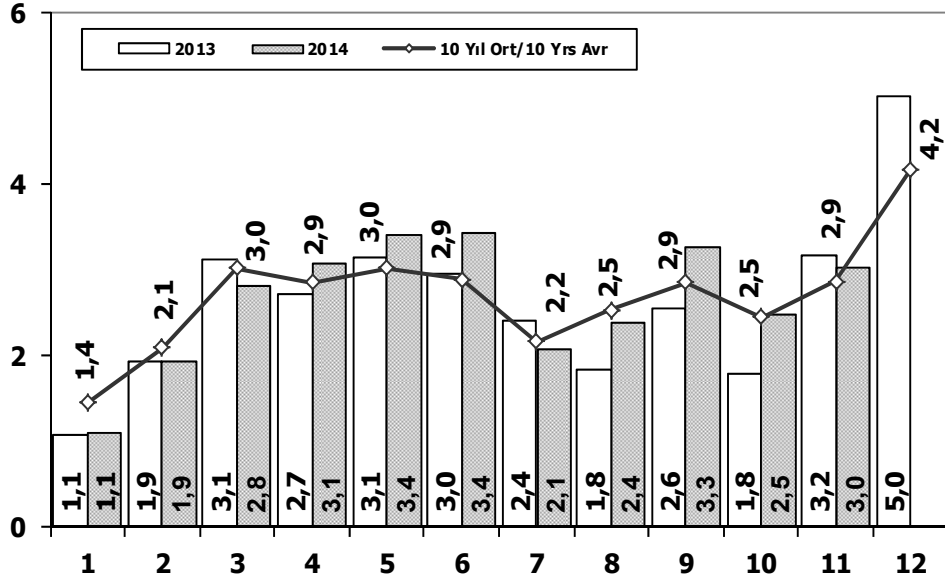
Traktör Pazarı (x1000)

F.Tractor Market (x1000)

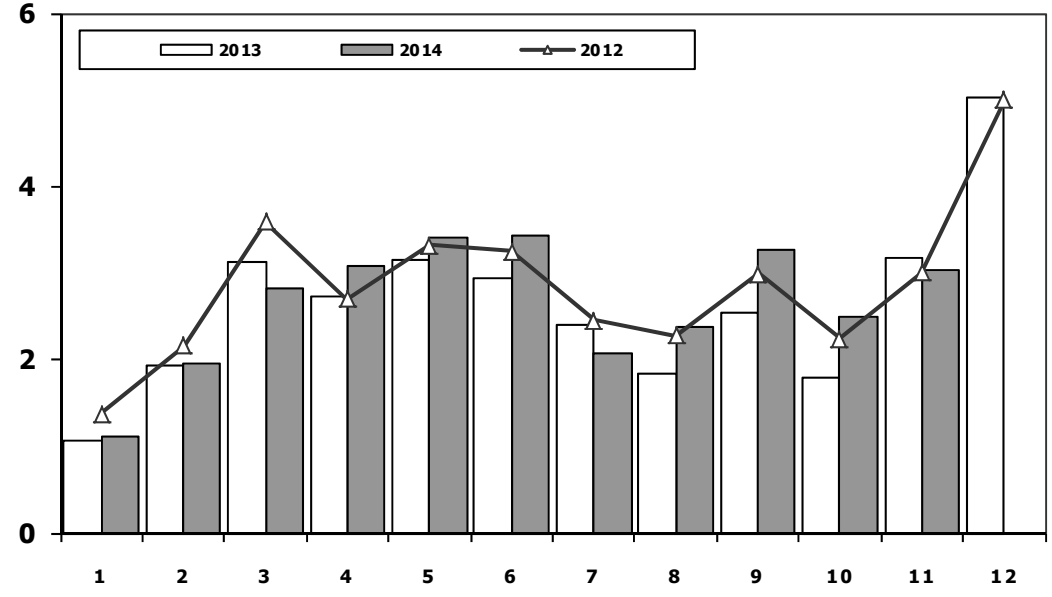


	1	2	3	4	5	6	7	8	9	10	11	12	11 Ay/Mo	Total
2004	1.946	1.874	2.909	3.260	2.863	2.816	1.988	2.209	2.509	1.989	2.198	1.364	26.561	27.925
2005	1.026	1.636	2.001	2.599	2.569	2.780	2.148	2.819	2.567	2.477	2.297	2.089	24.919	27.008
2006	1.578	2.493	2.746	2.841	3.561	2.356	1.685	2.177	2.756	1.915	2.353	1.925	26.461	28.386
2007	1.812	1.778	2.063	2.107	2.266	1.853	1.653	2.065	2.372	2.239	2.231	1.602	22.439	24.041
2008	1.510	1.427	1.933	1.692	1.689	1.592	1.275	924	904	609	707	359	14.262	14.621
2009	267	344	388	638	759	828	741	534	586	765	725	715	6.575	7.290
2010	714	903	1.432	1.653	1.736	1.673	1.613	1.527	2.351	2.787	2.656	2.345	19.045	21.390
2011	2.458	2.610	3.105	3.403	3.847	3.599	2.952	1.559	2.957	2.823	2.603	2.807	31.916	34.723
2012	2.216	2.632	3.223	3.259	3.067	2.821	2.037	1.262	1.648	1.858	1.921	1.579	25.944	27.523
2013	1.633	1.817	2.196	2.070	2.455	2.370	1.955	1.969	2.396	2.510	2.343	2.080	23.714	25.794
2014	1.941	2.256	2.915	2.837	2.723	2.534	2.171	2.265	3.039	2.755	2.964	0	28.400	28.400

Kamyon Pazarının Analizi (x1000) AYA > 5 Ton Truck Market Analysis (x1000) GVW > 5 Ton



Kamyon Pazarı (x1000) AYA > 5 Ton Truck Market (x1000) GVW > 5 Ton

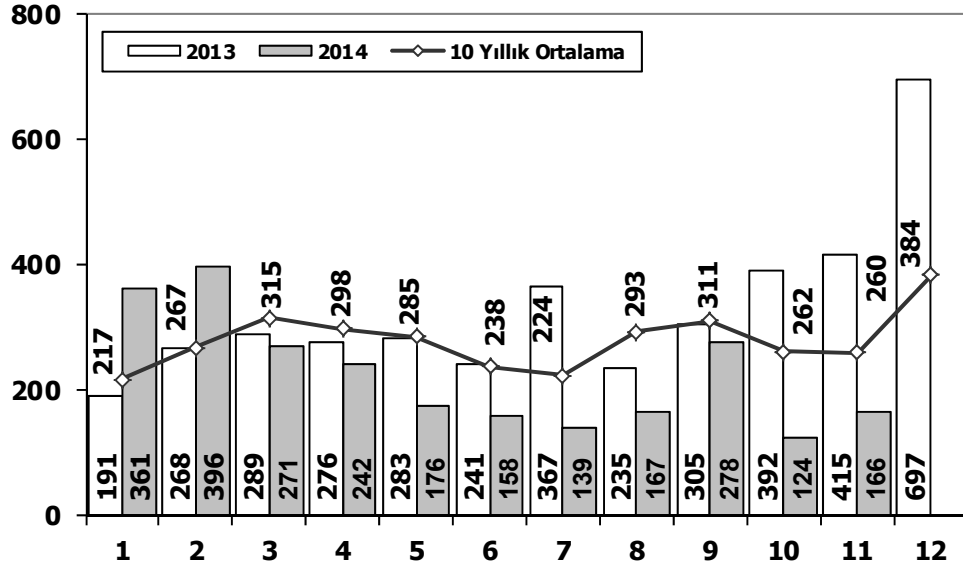


Aylar / Months	10 Yil Ort. 10 Yrs Avr. (x1000)	2014 (x100)	%
1	1,4	1,1	-22,9
2	2,1	1,9	-6,8
3	3,0	2,8	-6,7
4	2,9	3,1	8,1
5	3,0	3,4	12,8
6	2,9	3,4	18,8
7	2,2	2,1	-3,6
8	2,5	2,4	-5,7
9	2,9	3,3	14,7
10	2,5	2,5	1,6
11	2,9	3,0	5,6
Total	28,2	29,1	3,1

	1	2	3	4	5	6	7	8	9	10	11	12	11 Ay/Mo	Total
2004	1.863	1.949	3.983	3.352	3.651	3.118	2.234	2.897	3.285	2.727	2.629	5.517	31.688	37.205
2005	1.693	2.186	3.288	3.484	3.413	3.147	2.504	4.028	4.043	3.708	3.918	6.570	35.412	41.982
2006	1.767	3.310	4.467	4.180	4.449	3.398	2.472	3.142	3.052	2.926	3.550	5.358	36.713	42.071
2007	1.554	2.055	3.065	2.940	2.865	2.613	2.372	3.145	2.988	2.886	3.258	4.444	29.741	34.185
2008	1.797	2.309	2.621	2.578	2.459	2.526	2.067	2.377	2.390	1.790	1.512	1.834	24.426	26.260
2009	771	759	1.034	1.342	1.355	1.651	1.156	1.205	1.780	866	981	2.015	12.900	14.915
2010	777	968	1.772	1.807	1.966	2.205	2.093	2.446	2.444	3.071	3.136	5.677	22.685	28.362
2011	2.552	3.292	4.418	3.754	3.803	3.749	1.996	2.478	3.081	2.774	3.108	5.787	35.005	40.792
2012	1.375	2.159	3.595	2.697	3.321	3.250	2.450	2.277	2.991	2.244	3.006	5.000	29.365	34.365
2013	1.077	1.931	3.127	2.720	3.145	2.951	2.411	1.845	2.554	1.801	3.173	5.025	26.735	31.760
2014	1.117	1.949	2.818	3.092	3.405	3.438	2.083	2.390	3.281	2.496	3.026	0	29.095	29.095

Midibüs Pazarının Analizi (7-9 mt / 25-35 Kişilik)

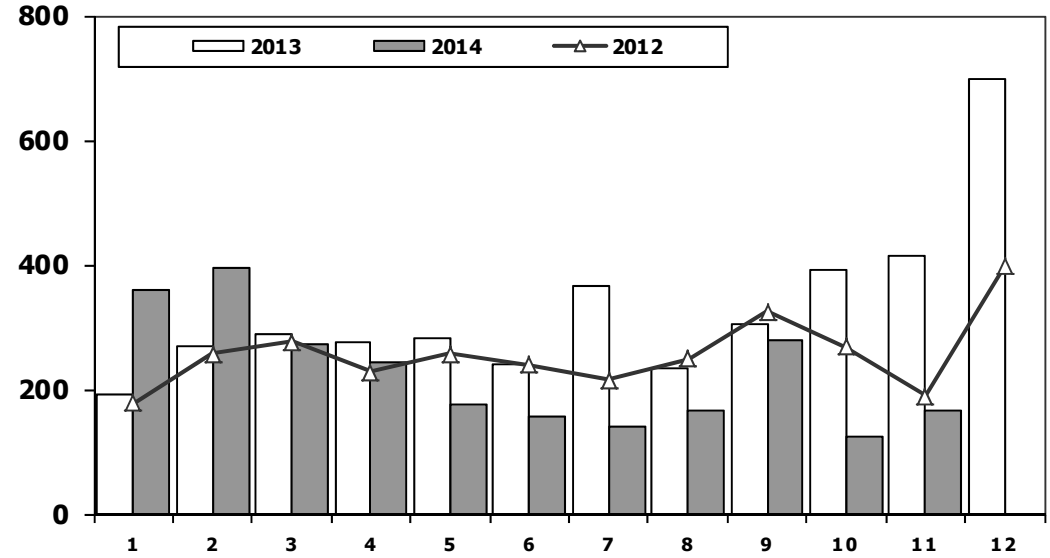
Midibus Market Analysis (7-9 mt / 25-35 Passengers)



Aylar / Months	10 Yıl Ort. 10 Yrs Avr.	2014	%
1	217	361	67
2	267	396	48
3	315	271	-14
4	298	242	-19
5	285	176	-38
6	238	158	-34
7	224	139	-38
8	293	167	-43
9	311	278	-11
10	262	124	-53
11	260	166	-36
Total	2.971	2.478	-17

Midibüs Pazarı (7-9 mt / 25-35 Kişilik Midibüs)

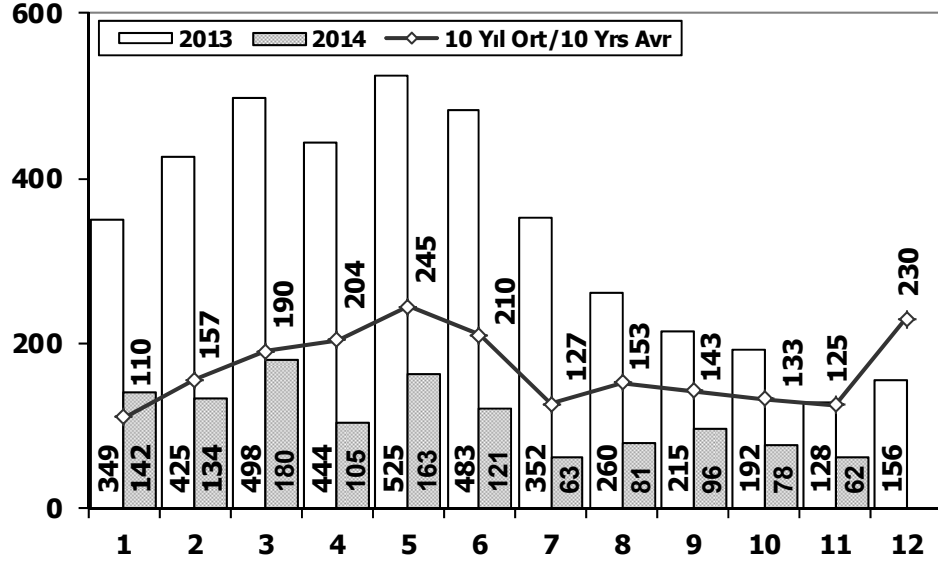
Midibus Market (7-9 mt / 25-35 Passengers)



	1	2	3	4	5	6	7	8	9	10	11	12	11 Ay/Mo	Total
2004	233	226	381	431	524	237	154	531	445	331	319	551	3.812	4.363
2005	182	258	432	393	439	269	252	459	436	329	328	574	3.777	4.351
2006	207	297	406	388	381	266	230	353	322	253	305	401	3.408	3.809
2007	207	272	404	238	302	283	164	365	399	279	283	465	3.196	3.661
2008	391	476	436	512	419	331	368	380	341	352	246	270	4.252	4.522
2009	154	124	160	220	174	198	160	175	168	143	206	323	1.882	2.205
2010	155	131	185	167	140	138	129	246	236	206	202	437	1.935	2.372
2011	138	195	294	316	280	258	211	305	301	276	260	270	2.834	3.104
2012	179	257	277	229	257	239	216	249	325	269	189	398	2.686	3.084
2013	191	268	289	276	283	241	367	235	305	392	415	697	3.262	3.959
2014	361	396	271	242	176	158	139	167	278	124	166	0	2.478	2.478

Otobüs Pazarının Analizi

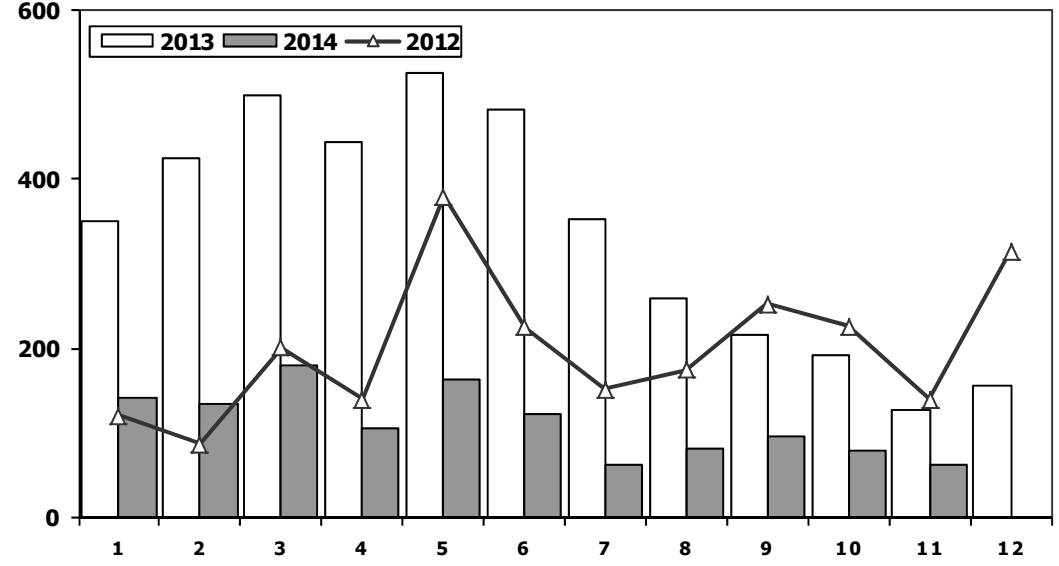
Bus Market Analysis



Aylar / Months	10 Yil Ort. / 10 Yrs Avr.	2014	%
1	110	142	29
2	157	134	-14
3	190	180	-5
4	204	105	-49
5	245	163	-33
6	210	121	-42
7	127	63	-50
8	153	81	-47
9	143	96	-33
10	133	78	-41
11	125	62	-50
Total	1.796	1.225	-32

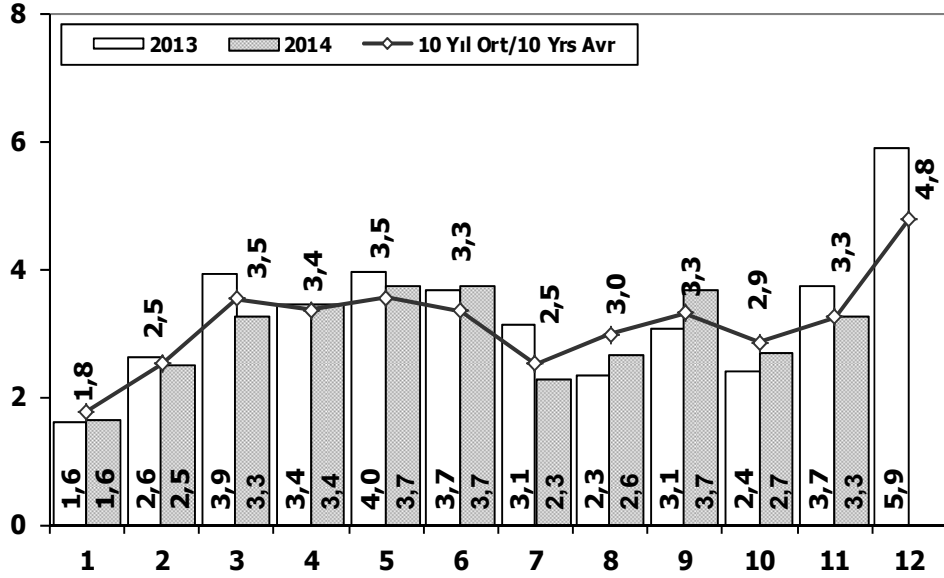
Otobüs Pazarı

Bus Market

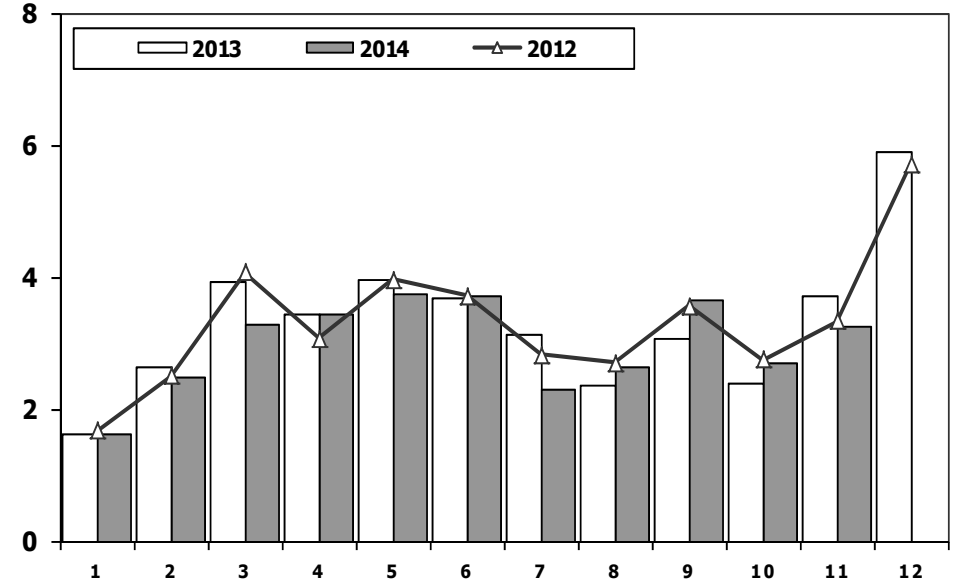


	1	2	3	4	5	6	7	8	9	10	11	12	11 Ay/Mo	Total
2004	173	135	215	198	169	143	103	118	90	95	89	78	1.528	1.606
2005	65	81	75	152	174	167	76	149	147	116	109	485	1.311	1.796
2006	78	101	165	247	230	184	84	112	146	84	176	176	1.607	1.783
2007	72	191	129	89	150	91	91	103	110	168	163	241	1.357	1.598
2008	77	85	108	176	151	212	101	165	166	121	141	236	1.503	1.739
2009	100	221	226	224	167	186	85	103	58	75	53	125	1.498	1.623
2010	23	42	102	159	145	151	151	189	107	99	106	251	1.274	1.525
2011	76	198	218	306	364	283	113	189	132	169	170	314	2.218	2.532
2012	120	87	201	139	379	225	152	174	252	226	140	315	2.095	2.410
2013	349	425	498	444	525	483	352	260	215	192	128	156	3.871	4.027
2014	142	134	180	105	163	121	63	81	96	78	62	0	1.225	1.225

Ağır Ticari Araç Pazarının Analizi (x1000) HCV Market Analysis (x1000)



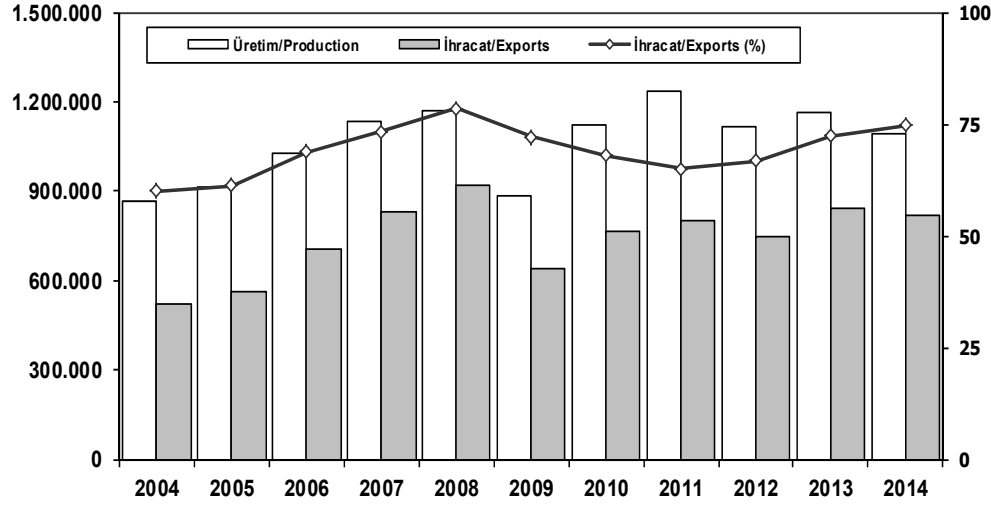
Ağır Ticari Araç Pazarı (x1000) HCV Market (x1000)



Aylar / Months	10 Yıl Ort. 10 Yrs Avr. (x1000)	2014 (x1000)	%
1	1,8	1,6	-8,7
2	2,5	2,5	-1,5
3	3,5	3,3	-7,3
4	3,4	3,4	2,3
5	3,5	3,7	5,5
6	3,3	3,7	11,2
7	2,5	2,3	-9,0
8	3,0	2,6	-11,5
9	3,3	3,7	10,3
10	2,9	2,7	-5,4
11	3,3	3,3	0,1
Total	33,0	32,8	-0,5

	1	2	3	4	5	6	7	8	9	10	11	12	11 Ay/Mo	Total
2004	2.269	2.310	4.579	3.981	4.344	3.498	2.491	3.546	3.820	3.153	3.037	6.146	37.028	43.174
2005	1.940	2.525	3.795	4.029	4.026	3.583	2.832	4.636	4.626	4.153	4.355	7.629	40.500	48.129
2006	2.052	3.708	5.038	4.815	5.060	3.848	2.786	3.607	3.520	3.263	4.031	5.935	41.728	47.663
2007	1.833	2.518	3.598	3.267	3.317	2.987	2.627	3.613	3.497	3.333	3.704	5.150	34.294	39.444
2008	2.265	2.870	3.165	3.266	3.029	3.069	2.536	2.922	2.897	2.263	1.899	2.340	30.181	32.521
2009	1.025	1.104	1.420	1.786	1.696	2.035	1.401	1.483	2.006	1.084	1.240	2.463	16.280	18.743
2010	955	1.141	2.059	2.133	2.251	2.494	2.373	2.881	2.787	3.376	3.444	6.365	25.894	32.259
2011	2.766	3.685	4.930	4.376	4.447	4.290	2.320	2.972	3.514	3.219	3.538	6.371	40.057	46.428
2012	1.674	2.503	4.073	3.065	3.957	3.714	2.818	2.700	3.568	2.739	3.335	5.713	34.146	39.859
2013	1.617	2.624	3.914	3.440	3.953	3.675	3.130	2.340	3.074	2.385	3.716	5.878	33.868	39.746
2014	1.620	2.479	3.269	3.439	3.744	3.717	2.285	2.638	3.655	2.698	3.254	0	32.798	32.798

İhracat/Üretim (2004-2014) Exports/Production (2004-2014)



	2004	2005	2006	2007	2008	2009	2010	2011	2012	2013	2014
Üretim/Production	864.073	916.062	1.026.427	1.132.951	1.171.917	884.466	1.124.982	1.234.637	1.115.233	1.166.043	1.094.928
İhracat/Exports	518.595	561.078	706.402	829.879	920.763	637.855	763.670	801.112	745.354	843.467	818.801
İhracat/Exports (%)	60	61	69	73	79	72	68	65	67	72	75

Taşıt Araçları İhracatı Motor Vehicle Exports

SEKTÖR/SECTOR	2012	2013	2013	2014	2013/2014 (%)
			11 Ay-11 Mo		
OTOMOBİL/ P.Cars	412.991	484.504	441.670	529.633	20
TİCARİ ARAÇLAR / CV	316.932	343.967	321.802	273.239	-15
* Kamyonet/Pick-Up	292.601	300.765	282.155	243.966	-14
* Minibüs/Minibus	16.429	34.664	32.201	23.398	-27
* Kamyon/Truck	2.682	3.055	2.693	1.070	-60
* Midibüs/Midibus	1.173	985	807	714	-12
* Otobüs/Bus	4.047	4.498	3.946	4.091	4
TAŞIT ARAÇLARI / MV TOTAL	729.923	828.471	763.472	802.872	5
TRAKTÖR/F.TRACTOR	15.431	14.996	13.412	15.929	19
TOTAL	745.354	843.467	776.884	818.801	5

Otomotiv Ana ve Yan Sanayii İhracatı (ABD \$) CBU and CKD Exports - \$

SEKTÖR/SECTOR	2011 Toplam (Total)	2012 Toplam (Total)	2013 Toplam (Total)	2013	2014	2014/2013 (%)
				11 Ay (11 Months)		
Toplam Yan Sanayi/Total Component Industry	6.595.662.583	8.307.826.870	8.223.513.061	8.343.164.841	8.826.569.677	6
İç ve Dış Lastik / Tyres	988.990.821	1.373.205.546	1.200.828.712	1.044.456.335	1.065.748.508	2
Emniyet Camı / Safety Glasses	107.203.983	120.041.467	120.710.174	124.290.937	132.706.035	7
Motor (Engine)	305.490.804	273.896.369	272.085.582	297.262.595	158.732.007	-47
Akümülatör / Batteries	186.504.496	232.611.079	250.345.945	275.308.577	260.003.762	-6
Diğer Aksam ve Parça / Spare Parts&Components	5.007.472.478	6.308.072.409	6.379.542.648	6.601.846.396	7.209.379.365	9
Toplam Ana Sanayi/Total Vehicle Industry	10.855.476.447	12.128.522.618	11.101.346.096	11.412.198.644	12.118.720.403	6
Otobüs / Bus	744.935.284	929.372.870	856.072.335	811.770.858	880.376.553	8
Midibüs-Minibüs / Minibus- Minibus	120.378.674	145.199.034	161.806.275	137.990.245	82.802.340	-40
Otomobil (P. Cars)	6.217.404.551	6.541.969.418	6.067.964.588	6.331.914.385	6.702.649.165	6
Kamyon-Kamyonet/HCV-LCV	3.363.101.038	4.034.772.621	3.433.318.136	3.571.045.567	3.808.659.674	7
Çekici/Truck-Tractor	145.710.283	116.912.332	195.260.385	195.571.185	222.651.348	14
Römork ve Yarı Römork/Trailer-Semi Trailer	72.145.150	147.247.613	71.336.635	69.141.504	35.517.900	-49
Tarım Traktörü/Farm Tractor	191.801.467	213.048.730	315.587.742	294.764.900	386.063.423	31
Toplam/Total	17.451.139.030	20.436.349.488	19.324.859.157	19.755.363.485	20.945.290.080	6

Kaynak: Otomotiv Endüstrisi İhracatçıları Birliği

Firma Bazında İhracat (Adet)

Export Of member Companies (Unit)

Sektör Bazında İhracat (\$)

Exports on Sectorial Basis

FİRMALAR Companies	2012	2013	Ocak-Kasım 11 Months	
			2013	2014
			OYAK RENAULT	227.162
FORD OTOSAN	191.149	208.722	196.669	169.067
HYUNDAI ASSAN	67.453	85.500	73.979	161.720
TOFAŞ	154.068	160.309	148.144	129.324
TOYOTA	63.549	86.908	79.108	101.570
TÜRK TRAKTÖR	14.572	14.402	12.874	14.781
M. BENZ TÜRK	4.054	5.331	4.787	3.053
HONDA TÜRKİYE	7.959	2.121	1.820	1.470
HATTAT TARIM	859	594	538	1.148
MAN TÜRKİYE	885	898	802	864
A.I.O.S.	943	770	641	613
OTOKAR	510	620	495	473
TEMSA GLOBAL	856	663	584	312
KARSAN	10.994	10.120	9.874	30
BMC	341	1	1	0
GENEL TOPLAM	745.354	843.467	776.884	818.801

Kaynak: OSD

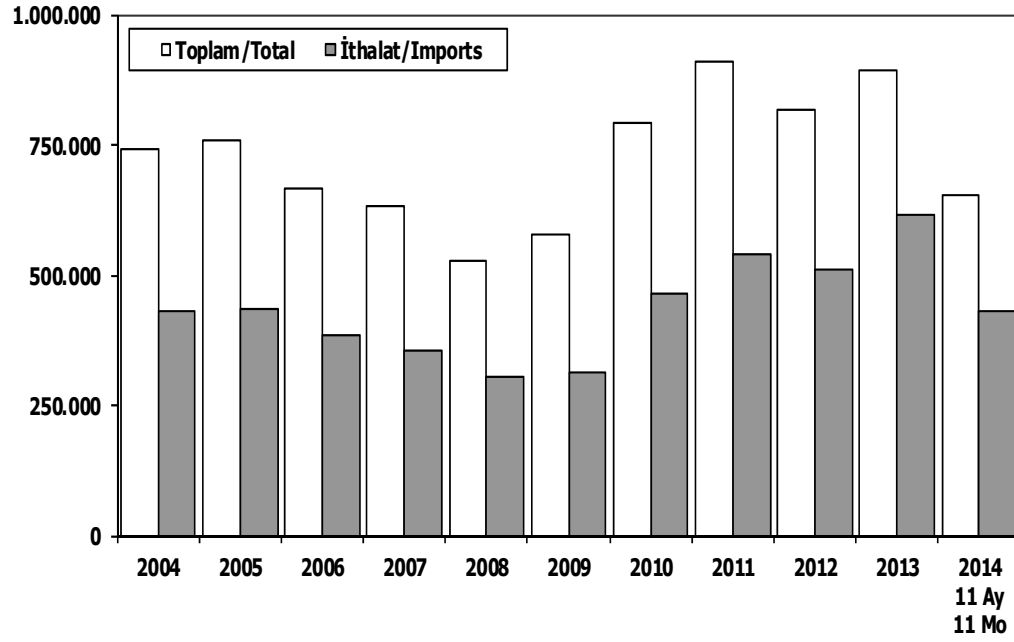
SEKTÖRLER	KASIM				OCAK-KASIM			
	2013	2014	2014/2013 (%)	Pay 2014 (%)	2013	2014	2014/2013 (%)	Pay 2014 (%)
1 Otomotiv Endüstrisi	2.075.494	1.845.222	-11	14	19.538.857	20.486.258	5	14
2 Hazırlama ve Konfeksiyon	1.657.168	1.509.039	-9	12	15.938.332	17.381.130	9	12
3 Kimyevi Maddeler ve Mamulleri	1.566.437	1.538.981	-2	12	15.832.528	16.435.992	4	11
4 Çelik	1.131.232	906.468	-20	7	12.631.562	12.049.105	-5	8
5 Elektrik Elektronik ve Hizmet	1.128.313	1.007.010	-11	8	10.580.473	10.982.706	4	8
6 Tekstil ve Hammaddeleri	813.456	733.498	-10	6	7.726.086	8.216.034	6	6
7 Demir ve Demir Dışı Metaller	651.407	568.115	-13	4	6.257.356	6.520.393	4	5
8 Hububat, Bakliyat, Yağlı Tohumlar ve Mam.	672.664	602.360	-10	5	5.912.530	6.067.129	3	4
9 İhracatçı Birlikleri Kaydından Muaf İhracat	**	**	**	**	5.782.697	6.028.077	4	4
10 Makine ve Aksamları	533.238	473.277	-11	4	5.224.168	5.495.199	5	4
11 Madencilik Ürünleri	439.724	393.151	-11	3	4.614.721	4.280.857	-7	3
12 Ağaç Mamulleri ve Orman Ürünleri	450.888	379.955	-16	3	4.016.647	4.109.276	2	3
13 İklimlendirme Sanayii	419.098	351.583	-16	3	3.838.132	4.067.161	6	3
14 Çimento Cam Seramik ve Toprak Ürünleri	263.624	251.006	-5	2	2.904.710	2.903.845	0	2
15 Mücevher	239.853	520.776	117	4	2.064.314	2.721.034	32	2
16 Hali	229.928	224.937	-2	2	1.992.834	2.140.186	7	1
17 Su Ürünleri ve Hayvansal Mamuller	193.389	195.692	1	2	1.802.991	2.070.134	15	1
18 Yaş Meyve ve Sebze	335.719	339.189	1	3	1.987.637	2.058.553	4	1
19 Fındık ve Mamulleri	203.082	293.776	45	2	1.603.555	2.001.229	25	1
20 Deri ve Deri Mamulleri	176.410	135.654	-23	1	1.721.400	1.675.505	-3	1
21 Savunma ve Havacılık Sanayii	109.259	147.785	35	1	1.225.393	1.472.731	20	1
22 Kuru Meyve ve Mamulleri	165.846	160.737	-3	1	1.307.939	1.325.453	1	1
23 Meyve Sebze Mamulleri	145.394	130.040	-11	1	1.210.155	1.299.145	7	1
24 Gemi ve Yat	58.767	63.882	9	0	1.067.918	1.116.816	5	1
25 Tütün ve Mamulleri	51.937	75.722	46	1	816.459	981.043	20	1
26 Zeytin ve Zeytinyağı	25.941	15.950	-39	0	412.688	203.907	-51	0
27 Diğer Sanayi Ürünleri	7.001	6.668	-5	0	96.179	101.968	6	0
28 Süs Bitkileri	6.415	4.965	-23	0	70.042	76.151	9	0
T O P L A M (Total)	13.751.683	12.875.439	-6	100	138.178.304	144.267.016	4	100

Kaynak: TİM

First 3 Sectors:

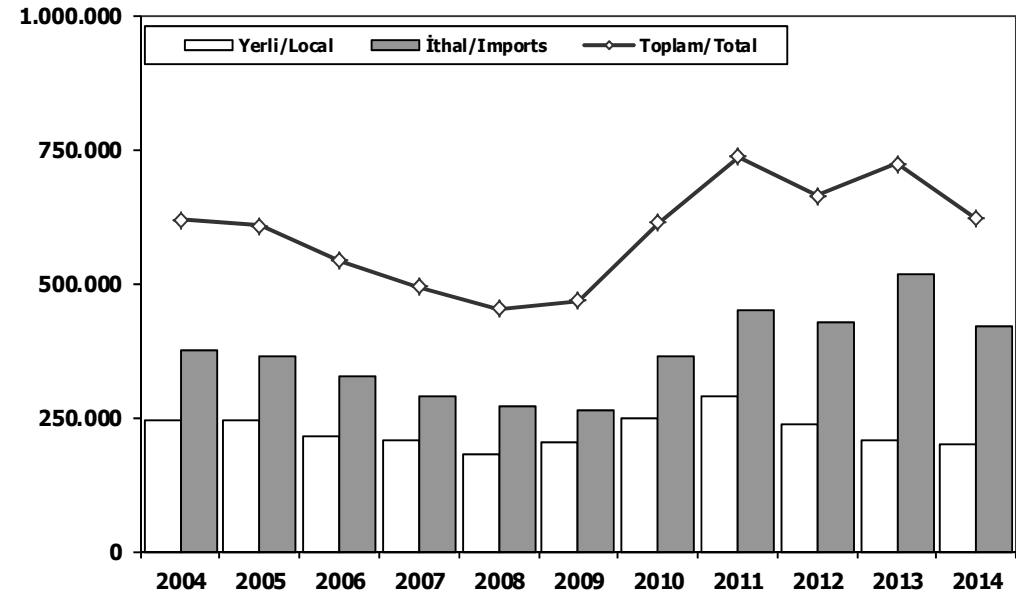
- 1- Transport Vehicle and Component Industry
- 2- Ready Wear and Confection
- 3- Chemical Articles and Products

Toplam Pazar (Otomobil+T.Araç) Total Market (P.Cars+C.V)



	2004	2005	2006	2007	2008	2009	2010	2011	2012	2013	2013 11 Ay 11 Mo	2014 11 Ay 11 Mo
Toplam/Total	741.269	758.537	665.515	634.206	526.544	575.869	793.172	910.867	817.620	893.124	757.528	653.490
İthalat/Imports	430.204	436.033	382.460	355.752	306.087	313.921	465.408	538.532	511.694	615.609	523.179	428.768
İthalat/Imports (%)	58	57	57	56	58	55	59	59	63	69	69	66

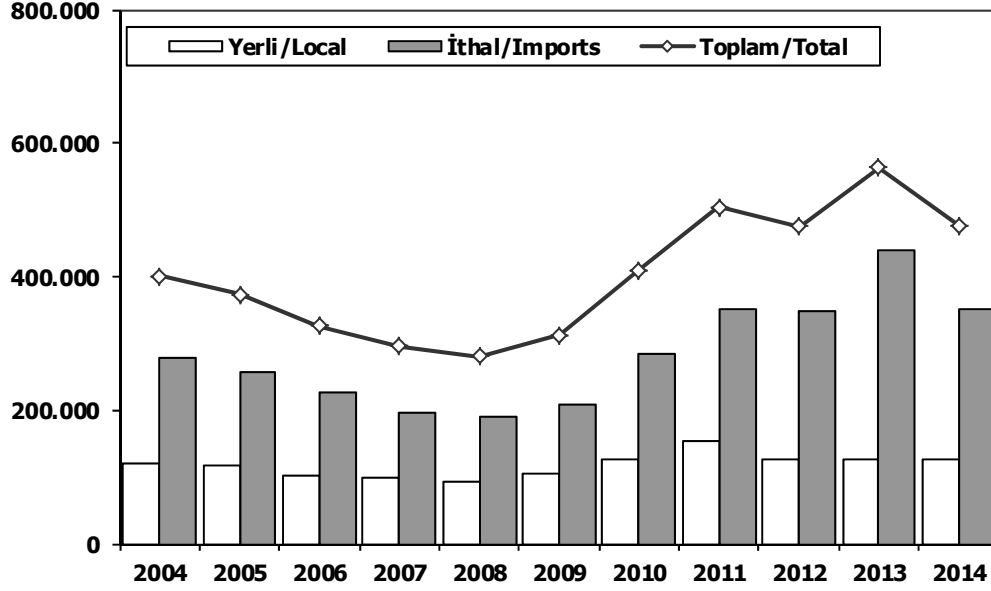
Hafif Araçlar Pazarı (2004-2014 Ocak-Kasım) LV Market (2004-2014 January-November)



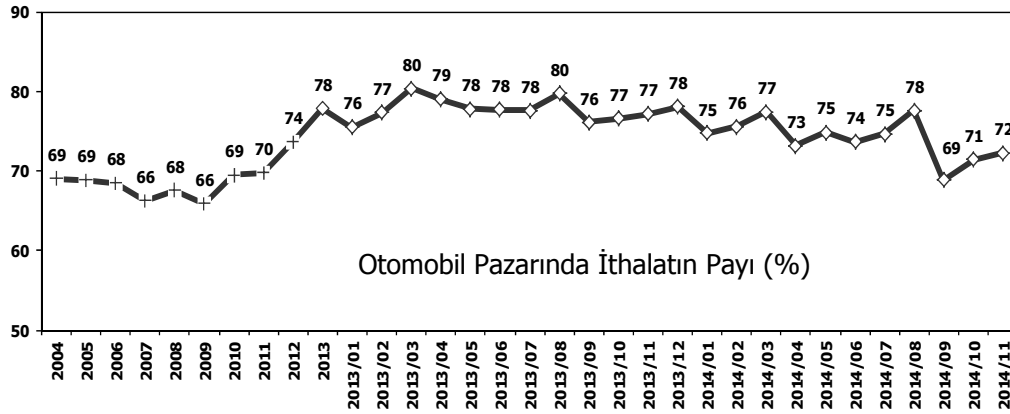
	2004	2005	2006	2007	2008	2009	2010	2011	2012	2013	2014
Yerli/Local	244.357	243.206	212.937	205.320	179.578	204.509	246.963	287.751	235.644	208.198	200.483
İthal/Imports	374.814	363.993	328.128	288.516	272.367	263.694	365.581	448.778	426.717	515.462	420.209
Toplam/Total	619.171	607.199	541.065	493.836	451.945	468.203	612.544	736.529	662.361	723.660	620.692
İthalat/Imports (%)	61	60	61	58	60	56	60	61	64	71	68

Otomobil Pazarı (2004-2014 Ocak-Kasım)

P.Cars Market (2004-2014 January-November)

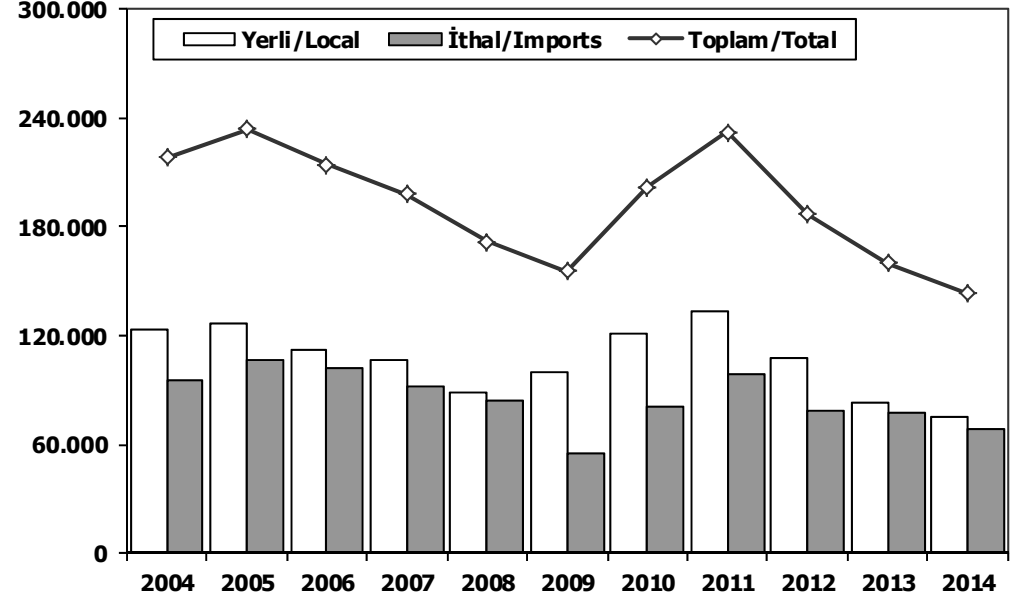


	2004	2005	2006	2007	2008	2009	2010	2011	2012	2013	2014
Yerli/Local	121.419	116.238	101.288	98.765	91.347	104.322	126.084	154.660	127.535	124.906	125.260
İthal/Imports	279.593	256.912	225.580	196.955	188.772	208.319	284.239	349.902	347.819	438.550	352.017
Toplam/Total	401.012	373.150	326.868	295.720	280.119	312.641	410.323	504.562	475.354	563.456	477.277
İthalat/Imports (%)	70	69	69	67	67	67	69	69	73	78	74

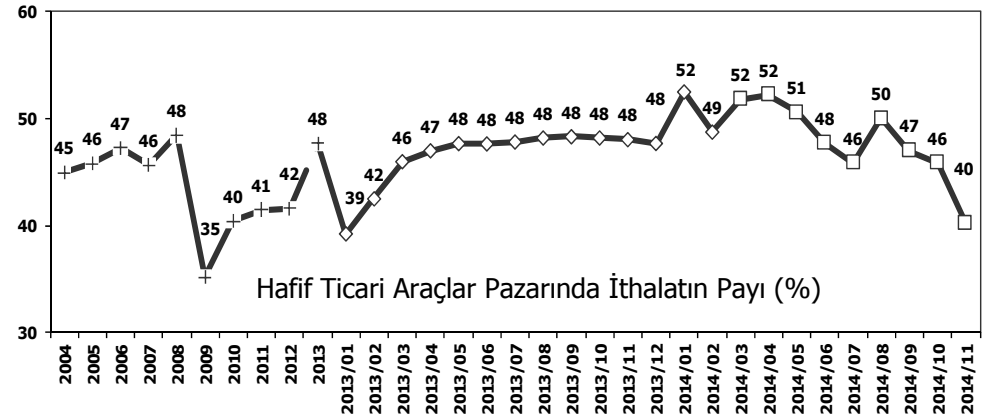


Hafif Ticari Araçlar Pazarı (2004-2014 Ocak-Kasım)

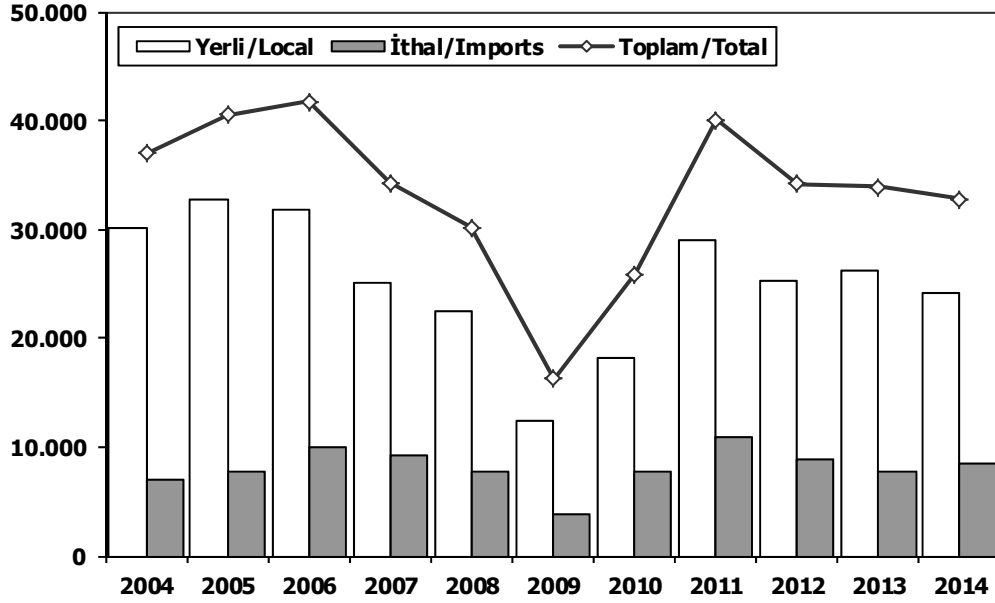
Light Commercial Vehicle Market (2004-2014 January-November)



	2004	2005	2006	2007	2008	2009	2010	2011	2012	2013	2014
Yerli/Local	122.938	126.968	111.649	106.555	88.231	100.187	120.879	133.091	108.109	83.292	75.223
İthal/Imports	95.221	107.081	102.548	91.561	83.595	55.375	81.342	98.876	78.898	76.912	68.192
Toplam/Total	218.159	234.049	214.197	198.116	171.826	155.562	202.221	231.967	187.007	160.204	143.415
İthalat/Imports (%)	44	46	48	46	49	36	40	43	42	48	48

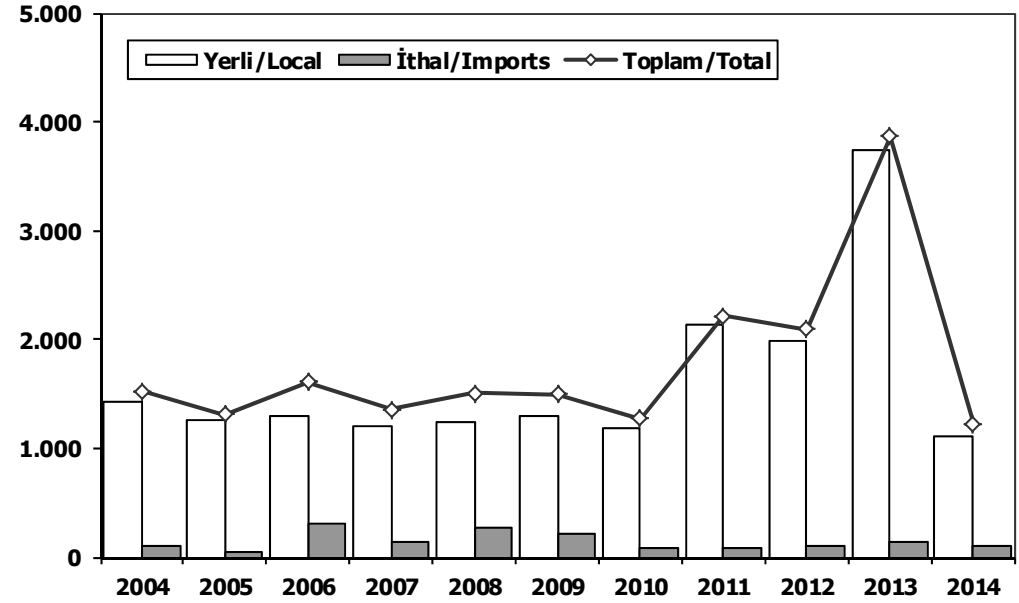


Ağır Ticari Araçlar Pazarı (2004-2014 Ocak-Kasım) HCV Market (2004-2014 January-November)



	2004	2005	2006	2007	2008	2009	2010	2011	2012	2013	2014
Yerli/Local	30.093	32.680	31.760	25.077	22.518	12.418	18.186	29.068	25.211	26.151	24.239
İthal/Imports	6.935	7.820	9.968	9.217	7.663	3.862	7.708	10.989	8.935	7.717	8.559
Toplam/Total	37.028	40.500	41.728	34.294	30.181	16.280	25.894	40.057	34.146	33.868	32.798
İthalat/Imports (%)	19	19	24	27	25	24	30	27	26	23	26

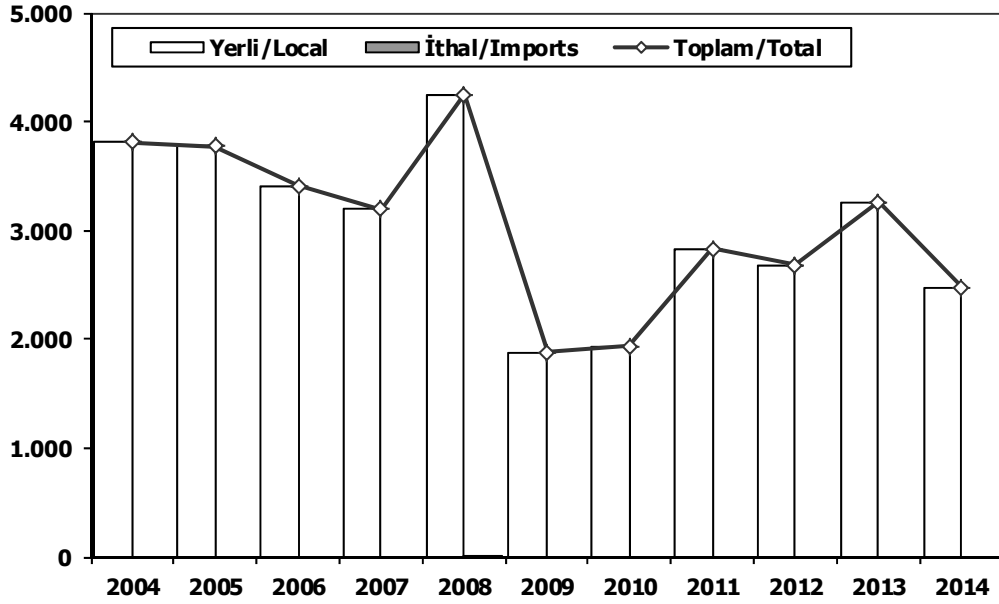
Otobüs Pazarı (2004-2014 Ocak-Kasım) Bus Market (2004-2014 January-November)



	2004	2005	2006	2007	2008	2009	2010	2011	2012	2013	2014
Yerli/Local	1.430	1.256	1.295	1.209	1.238	1.292	1.188	2.133	1.986	3.736	1.115
İthal/Imports	98	55	312	148	265	206	86	85	109	135	110
Toplam/Total	1.528	1.311	1.607	1.357	1.503	1.498	1.274	2.218	2.095	3.871	1.225
İthalat/Imports (%)	6	4	19	11	18	14	7	4	5	3	9

Midibüs Pazarı (2004-2014 Ocak-Kasım) (7-9 mt/25-35 Kişilik)

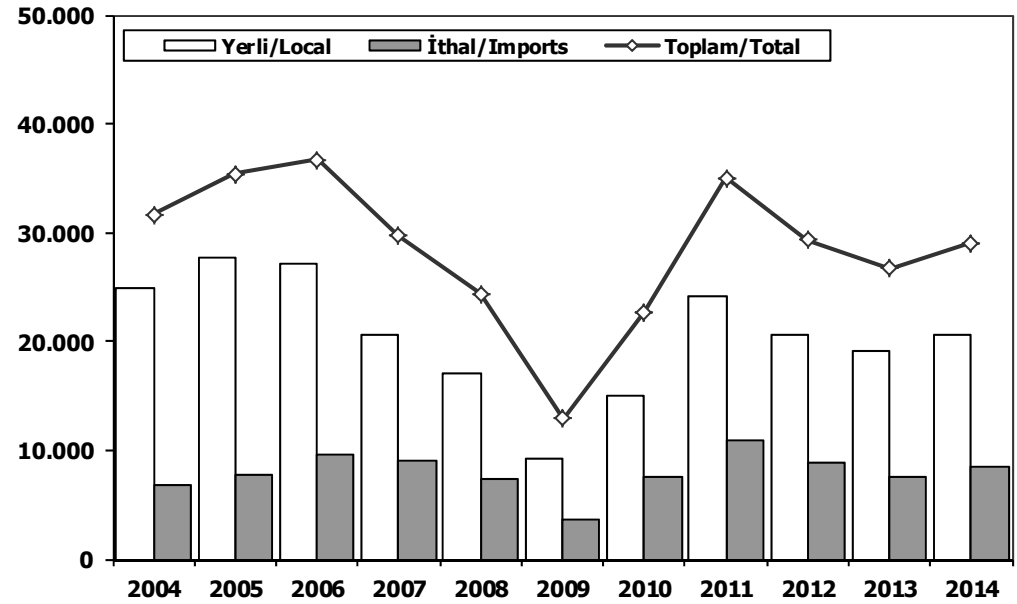
Midibus Market (2004-2014 January-November) (7-9 mt/25-35 Passengers)



	2004	2005	2006	2007	2008	2009	2010	2011	2012	2013	2014
Yerli/Local	3.812	3.777	3.408	3.196	4.241	1.882	1.935	2.834	2.686	3.262	2.478
İthal/Imports	0	0	0	0	11	0	0	0	0	0	0
Toplam/Total	3.812	3.777	3.408	3.196	4.252	1.882	1.935	2.834	2.686	3.262	2.478
İthalat/Imports (%)	0	0	0	0	0	0	0	0	0	0	0

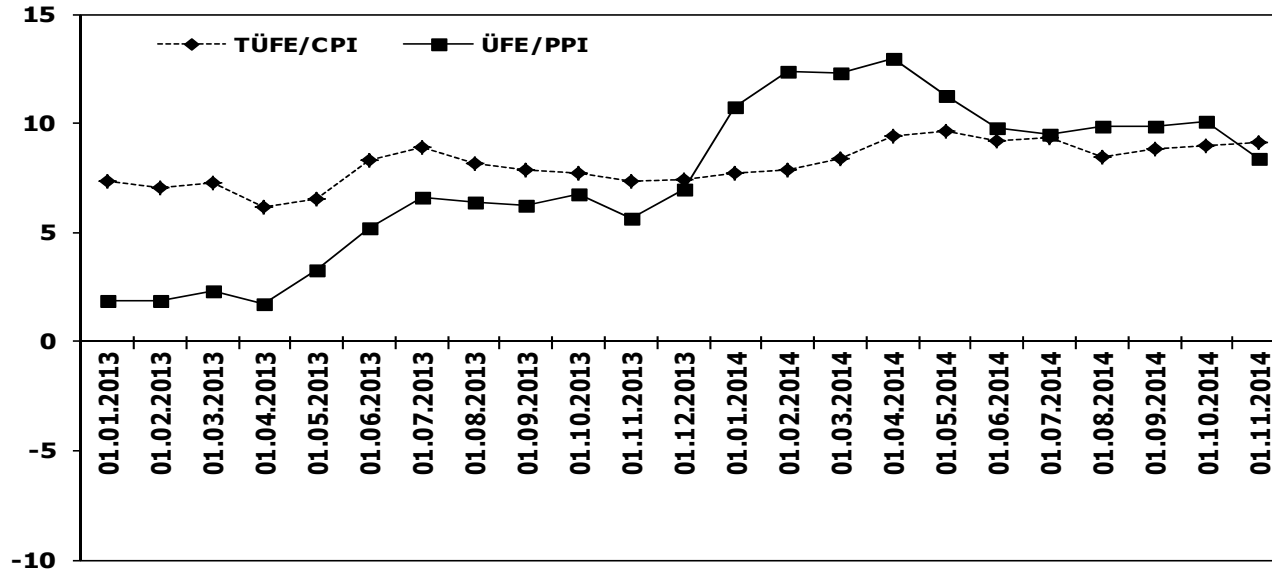
Kamyon Pazarı (2004-2014 Ocak-Kasım)

Truck Market (2004-2014 January-November)

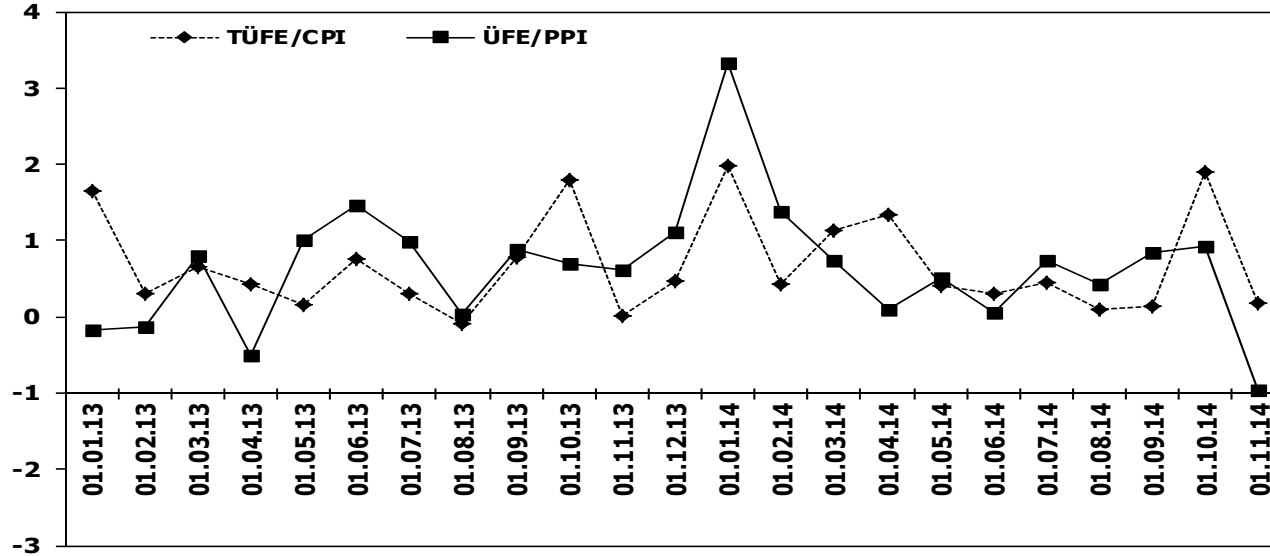


	2004	2005	2006	2007	2008	2009	2010	2011	2012	2013	2014
Yerli/Local	24.851	27.647	27.057	20.672	17.039	9.244	15.063	24.101	20.539	19.153	20.646
İthal/Imports	6.837	7.765	9.656	9.069	7.387	3.656	7.622	10.904	8.826	7.582	8.449
Toplam/Total	31.688	35.412	36.713	29.741	24.426	12.900	22.685	35.005	29.365	26.735	29.095
İthalat/Imports (%)	22	22	26	30	30	28	34	31	30	28	29

TÜFE ve ÜFE'nin Yıllık Değişimi (%) CPI and PPI Yearly Changes (%)



TÜFE ve ÜFE'nin Aylık Değişimi (%) CPI and PPI Monthly Changes (%)



2014 Otomotiv Sanayii Dış Satışlar 2014 Automotive Industry Exports Sales

TIPLER-Types	Ocak January	Şubat February	Mart March	Nisan April	Mayıs May	Haziran June	Temmuz July	Ağustos August	Eylül September	Ekim October	Kasım November	Aralık December	TOPLAM Total
Otomobil	35.925	46.549	53.966	55.913	52.296	54.886	53.125	26.433	54.468	44.544	51.528	0	529.633
* OTOMOBİL-Pass. Car	35.925	46.549	53.966	55.913	52.296	54.886	53.125	26.433	54.468	44.544	51.528	0	529.633
TİCARİ ARAÇ	15.499	22.600	28.280	26.961	29.622	29.842	26.562	11.514	28.890	24.433	29.036	0	273.239
* KAMYONET-Pick Up	14.122	20.532	25.507	24.027	26.654	27.200	24.154	9.535	25.529	21.082	25.624	0	243.966
* KAMYON-Truck	61	94	71	73	122	106	157	71	79	77	159	0	1.070
* MIDİBÜS-Midibus	54	20	126	49	79	126	14	89	23	71	63	0	714
* MINİBÜS-Minibus	1.088	1.617	2.174	2.429	2.397	1.997	1.811	1.454	2.883	2.860	2.688	0	23.398
* OTOBÜS-Bus	174	337	402	383	370	413	426	365	376	343	502	0	4.091
Traktör	864	1.332	1.335	1.198	1.761	1.819	1.522	1.256	1.816	1.618	1.408	0	15.929
TRAKTÖR-F.Tractor	864	1.332	1.335	1.198	1.761	1.819	1.522	1.256	1.816	1.618	1.408	0	15.929
TOPLAM-Total	52.288	70.481	83.581	84.072	83.679	86.547	81.209	39.203	85.174	70.595	81.972	0	818.801

Otomobil

FİRMALAR-Companies	Ocak January	Şubat February	Mart March	Nisan April	Mayıs May	Haziran June	Temmuz July	Ağustos August	Eylül September	Ekim October	Kasım November	Aralık December	TOPLAM Total
FORD OTOSAN	0	15	17	175	1.746	1.426	1.470	153	479	372	1.473	0	7.326
HONDA TÜRKİYE	147	63	0	240	90	275	295	61	107	192	0	0	1.470
HYUNDAI ASSAN	12.425	9.200	15.000	17.000	17.245	17.170	15.700	11.300	17.377	13.003	16.300	0	161.720
OYAK RENAULT	12.579	24.852	24.495	24.941	20.480	24.089	22.191	9.058	25.006	21.555	25.130	0	234.376
TOFAŞ	1.885	2.135	3.083	2.380	2.287	2.749	2.090	620	2.201	1.815	1.926	0	23.171
TOYOTA	8.889	10.284	11.371	11.177	10.448	9.177	11.379	5.241	9.298	7.607	6.699	0	101.570
TOPLAM-Total	35.925	46.549	53.966	55.913	52.296	54.886	53.125	26.433	54.468	44.544	51.528	0	529.633

Kamyonet

FİRMALAR-Companies	Ocak January	Şubat February	Mart March	Nisan April	Mayıs May	Haziran June	Temmuz July	Ağustos August	Eylül September	Ekim October	Kasım November	Aralık December	TOPLAM Total
FORD OTOSAN	5.035	10.950	14.732	14.368	15.771	16.000	13.203	6.829	14.425	12.279	14.103	0	137.695
KARSAN	6	0	0	0	2	1	0	0	0	0	0	0	9
OTOKAR	0	0	0	0	10	39	0	14	0	6	40	0	109
TOFAŞ	9.081	9.582	10.775	9.659	10.871	11.160	10.951	2.692	11.104	8.797	11.481	0	106.153
TOPLAM-Total	14.122	20.532	25.507	24.027	26.654	27.200	24.154	9.535	25.529	21.082	25.624	0	243.966

Minibüs

FİRMALAR-Companies	Ocak January	Şubat February	Mart March	Nisan April	Mayıs May	Haziran June	Temmuz July	Ağustos August	Eylül September	Ekim October	Kasım November	Aralık December	TOPLAM Total
FORD OTOSAN	1.088	1.617	2.173	2.429	2.387	1.996	1.807	1.449	2.879	2.860	2.688	0	23.373
KARSAN	0	0	1	0	0	1	4	5	4	0	0	0	15
OTOKAR	0	0	0	0	10	0	0	0	0	0	0	0	10
TOPLAM-Total	1.088	1.617	2.174	2.429	2.397	1.997	1.811	1.454	2.883	2.860	2.688	0	23.398

Kamyon

FİRMALAR-Companies	Ocak January	Şubat February	Mart March	Nisan April	Mayıs May	Haziran June	Temmuz July	Ağustos August	Eylül September	Ekim October	Kasım November	Aralık December	TOPLAM Total
FORD OTOSAN	32	55	67	53	91	81	93	30	30	46	95	0	673
KARSAN	0	0	0	1	0	0	0	0	0	0	2	0	3
M. BENZ TÜRK	29	39	4	19	31	25	64	41	49	31	58	0	390
OTOKAR	0	0	0	0	0	0	0	0	0	0	4	0	4
TOPLAM-Total	61	94	71	73	122	106	157	71	79	77	159	0	1.070

Midibüs

FİRMALAR-Companies	Ocak January	Şubat February	Mart March	Nisan April	Mayıs May	Haziran June	Temmuz July	Ağustos August	Eylül September	Ekim October	Kasım November	Aralık December	TOPLAM Total
A.I.O.S.	52	20	108	44	64	71	9	65	5	43	54	0	535
OTOKAR	2	0	17	5	15	55	5	24	18	28	9	0	178
TEMSA GLOBAL	0	0	1	0	0	0	0	0	0	0	0	0	1
TOPLAM-Total	54	20	126	49	79	126	14	89	23	71	63	0	714

Otobüs

FİRMALAR-Companies	Ocak January	Şubat February	Mart March	Nisan April	Mayıs May	Haziran June	Temmuz July	Ağustos August	Eylül September	Ekim October	Kasım November	Aralık December	TOPLAM Total
A.I.O.S.	0	0	34	1	0	0	5	1	5	14	18	0	78
KARSAN	0	0	0	0	0	0	3	0	0	0	0	0	3
M. BENZ TÜRK	86	193	255	233	282	311	278	284	230	158	353	0	2.663
MAN TÜRKİYE	66	90	76	116	70	75	69	41	91	93	77	0	864
OTOKAR	1	3	7	9	12	14	38	13	16	49	10	0	172
TEMSA GLOBAL	21	51	30	24	6	13	33	26	34	29	44	0	311
TOPLAM-Total	174	337	402	383	370	413	426	365	376	343	502	0	4.091

Traktör

FİRMALAR-Companies	Ocak January	Şubat February	Mart March	Nisan April	Mayıs May	Haziran June	Temmuz July	Ağustos August	Eylül September	Ekim October	Kasım November	Aralık December	TOPLAM Total
HATTAT TARIM	42	90	86	130	139	110	109	86	161	110	85	0	1.148
TÜRK TRAKTÖR	822	1.242	1.249	1.068	1.622	1.709	1.413	1.170	1.655	1.508	1.323	0	14.781
TOPLAM-Total	864	1.332	1.335	1.198	1.761	1.819	1.522	1.256	1.816	1.618	1.408	0	15.929

2014 Yılı İthal Hafif Araç Satışları 2014 Light Vehicles Import Sales

2014 YILI İTHAL OTOMOBİL SATIŞLARI / P.Cars Import 2014

	2013 TOPLAMI 2013 Total	1	2	3	4	5	6	7	8	9	10	11	12	2014 TOPLAMI 2014 Total
VOLKSWAGEN	88.304	4.242	5.080	6.247	7.025	7.193	6.026	7.104	6.863	6.283	7.139	8.262	0	71.464
OPEL	55.719	1.672	1.374	2.316	2.833	3.346	3.431	2.888	2.868	3.125	3.442	3.542	0	30.837
FORD	58.405	1.389	1.244	1.621	2.400	2.866	3.658	4.762	3.220	2.420	2.449	3.277	0	29.306
B.M.W	20.705	334	617	1.875	1.852	1.938	2.076	2.050	2.856	2.417	3.146	2.798	0	21.959
DACIA	28.901	1.158	1.229	1.854	1.586	1.883	2.274	2.358	2.096	1.492	2.269	3.214	0	21.413
RENAULT	32.904	1.719	1.616	2.101	1.842	2.121	1.629	1.719	1.862	2.159	1.771	2.674	0	21.213
MERCEDES	20.023	582	900	1.783	1.619	2.083	2.512	1.723	1.700	2.014	2.013	1.625	0	18.554
HYUNDAI	29.824	882	1.125	1.362	1.675	1.861	1.988	1.720	1.616	2.324	1.896	1.963	0	18.410
NISSAN	18.417	741	1.603	2.355	1.237	1.181	985	1.091	1.687	1.592	1.455	1.735	0	15.862
AUDI	14.987	455	750	1.175	1.391	1.598	1.255	903	1.657	1.303	1.525	2.179	0	14.191
PEUGEOT	23.068	622	871	1.258	1.208	1.324	1.999	1.104	1.109	1.314	1.124	1.844	0	13.777
SKODA	12.833	458	632	747	907	1.578	1.200	1.230	1.355	1.300	1.377	1.348	0	12.132
CITROEN	19.690	657	715	790	1.062	1.040	888	943	952	1.370	1.259	1.555	0	11.231
SEAT	11.065	536	352	524	762	811	959	1.326	1.310	719	1.350	1.922	0	10.571
KIA	13.195	483	462	694	733	775	944	876	981	1.208	861	1.093	0	9.110
TOYOTA	22.421	366	363	512	682	647	576	953	975	888	920	1.136	0	8.018
FIAT	10.913	587	313	306	553	723	718	516	427	370	412	534	0	5.459
VOLVO	5.021	252	256	412	509	525	501	470	428	448	557	729	0	5.087
HONDA	3.394	142	257	285	455	161	105	295	246	224	187	316	0	2.673
JEEP	973	31	66	64	71	46	63	45	171	129	263	354	0	1.303
SUBARU	1.101	120	70	116	91	108	124	68	96	135	110	134	0	1.172
LAND ROVER	1.323	26	52	142	95	144	94	88	66	76	114	122	0	1.019
MAZDA	1.377	30	40	69	133	57	170	61	53	153	155	95	0	1.016
SUZUKI	1.623	76	68	98	99	179	115	83	86	50	45	26	0	925
MINI (İngiliz)	1.557	51	51	150	45	73	56	48	47	88	136	125	0	870
MITSUBISHI	1.488	83	81	53	70	65	62	58	68	78	70	172	0	860
ALFA ROMEO	1.030	60	26	32	44	147	150	110	62	47	75	95	0	848
CHEVROLET	12.506	206	161	134	29	8	14	14	0	1	1	4	0	572
PROTON	715	110	22	24	74	80	50	20	20	32	30	100	0	562
PORSCHE	517	45	31	27	41	41	41	57	54	35	44	53	0	469
SSANGYONG	972	44	16	38	52	30	57	41	40	40	36	47	0	441
CHERY	492	17	16	34	34	53	35	12	17	22	20	30	0	290
LANCIA	782	8	31	44	69	17	18	3	2	4	2	3	0	201
TATA	326	1	0	0	0	0	17	15	5	27	19	21	0	105
GEELY	623	12	5	9	8	3	10	10	9	10	3	6	0	85
SMART	110	4	5	8	8	5	8	7	0	4	6	12	0	67
MASERATI	40	6	8	9	4	5	4	3	5	7	6	7	0	64
JAGUAR	97	0	8	3	5	2	8	4	4	15	1	1	0	51
BENTLEY	21	0	2	1	0	2	1	2	1	1	2	1	0	13
FERRARI	23	0	3	2	0	2	0	0	0	2	1	0	0	10
INFINITI	37	1	0	1	0	1	0	0	0	0	0	2	0	5
LAMBORGHINI	4	0	1	0	0	0	0	0	0	0	1	0	0	2
TOPLAM	517.526	18.208	20.522	29.275	31.303	34.722	34.819	34.780	35.014	33.926	36.292	43.156	0	352.017

2014 YILI İTHAL HAFIF TİCARİ ARAÇ SATIŞLARI / Light Commercial Vehicles Import 2014

	2013 TOPLAMI 2013 Total	1	2	3	4	5	6	7	8	9	10	11	12	2014 TOPLAMI 2014 Total
VOLKSWAGEN	23.752	1.152	1.144	1.365	1.779	1.956	2.004	1.975	2.208	1.915	1.975	2.394	0	19.867
RENAULT	11.550	565	431	556	484	613	666	640	767	849	746	986	0	7.303
MERCEDES	10.421	490	389	712	456	493	658	479	759	679	838	833	0	6.786
FIAT	6.245	397	455	414	557	514	424	414	796	731	722	724	0	6.148
DACIA	7.494	510	400	315	340	427	409	440	505	1.063	473	732	0	5.614
CITROEN	6.679	234	103	318	386	448	666	661	424	610	596	582	0	5.028
PEUGEOT	8.323	78	105	249	445	539	438	361	448	701	434	667	0	4.465
MITSUBISHI	3.592	229	180	201	266	196	168	297	502	557	530	347	0	3.473
IVECO	2.204	77	127	212	181	168	189	138	164	201	250	224	0	1.931
KIA	453	47	44	62	102	114	158	102	241	319	240	397	0	1.826
ISUZU	2.587	228	138	174	177	190	123	212	260	76	54	29	0	1.661
TOYOTA	2.413	139	105	349	116	66	83	94	118	128	113	169	0	1.480
HYUNDAI	1.480	117	86	73	117	126	67	149	199	101	104	159	0	1.298
SSANGYONG	859	63	55	11	33	31	43	64	73	47	52	54	0	526
NISSAN	878	9	2	20	13	20	19	9	26	58	50	40	0	266
TATA	316	20	34	16	29	27	16	25	25	25	24	23	0	264
FORD	657	1	23	12	16	7	14	34	18	55	24	43	0	247
MAZDA	3	0	5	0	0	3	1	0	0	0	0	0	0	9
TOPLAM	89.906	4.356	3.826	5.059	5.497	5.938	6.146	6.094	7.533	8.115	7.225	8.403	0	68.192