



AYLIK RAPOR

Automotive Industry Monthly Report

Eylül / September 2014

- **Üretim**/Production
- **Satış**/Sales
- **İthalat**/Imports
- **İhracat**/Exports

OSD "OICA" Üyesidir



OSD is a Member of "OICA"

2014 Eylül Ayı Özeti / 2014 September Summary

KONULAR/MATTERS		EYLÜL / SEPTEMBER			9 AY/ 9 MONTHS			SON 12 AYLIK / YoY		
		2013	2014	2014/2013 (%)	2013	2014	2014/2013 (%)	2013	2014	2014/2013 (%)
Üretim/ Production	Toplam/ Total	111.516	116.281	4	840.143	835.782	-1	1.119.148	1.121.173	0
	Otomobil/ P.Cars	65.199	72.120	11	464.530	531.492	14	613.632	700.566	14
Pazar/ Market	Toplam/ Total	71.037	70.143	-1	614.112	500.301	-19	872.947	779.313	-11
	Otomobil/ P.Cars	52.925	49.262	-7	452.354	366.768	-19	629.017	579.069	-8
İthalat/ Import	Toplam/ Total	48.442	42.653	-12	424.358	331.742	-22	587.683	522.993	-11
	Otomobil/ P.Cars	40.279	33.926	-16	353.075	272.569	-23	486.810	442.184	-9
İhracat/ Export	Toplam/ Total	76.682	83.111	8	618.140	653.084	6	812.033	863.415	6
	Otomobil/ P.Cars	45.991	54.221	18	354.358	433.314	22	467.023	563.460	21
İhracat / Export (\$)	Toplam/ Total **	1.972.450.851	2.007.525.929	2	15.878.531.146	17.304.245.216	9	20.946.390.640	18.836.540.457	-10
	Otomobil/ P.Cars	589.707.557	626.879.662	6	5.169.027.122	5.531.515.722	7	6.829.814.028	7.228.508.505	6

PARAMETRELER / PARAMETERS		EYLÜL / SEPTEMBER			9 AY/ 9 MONTHS			SON 12 AYLIK / YoY		
		2013	2014	2014/2013 (%)	2013	2014	2014/2013 (%)	2013	2014	2014/2013 (%)
ÜFE/ PPI		0,88	0,85	**	4,43	7,24	**	6,23	9,84	**
TÜFE/ CPI		0,77	0,14	**	5,01	6,43	**	7,88	8,86	**
Sanayi Endeksi/ Industry Index		1,58	0,90	**	5,37	8,72	**	8,26	10,36	**
\$ (*)		2,0351	2,2756	12	1,8950	2,1732	15	1,8684	2,1413	15
EURO (*)		2,7483	2,8726	5	2,4882	2,9283	18	2,4494	2,8959	18
Japon Yeni (*)		2,0703	2,0645	0	1,9512	2,1018	8	2,0036	2,0753	4

(*) Ortalama Değerler / Average Values

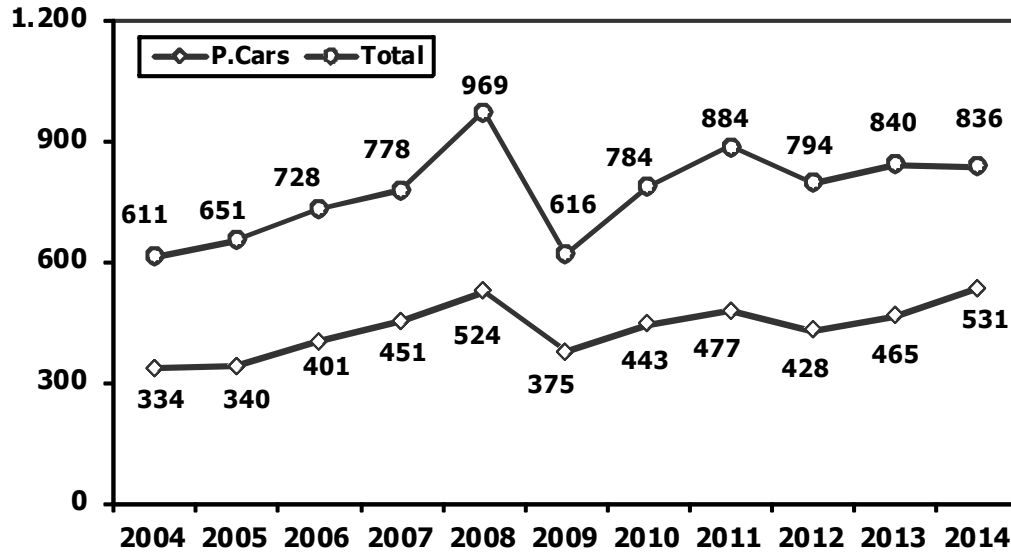
(**) Toplam Sanayi / Total Industry Including Components

2013/2014 Yılları Üretim 2013/2014 Production

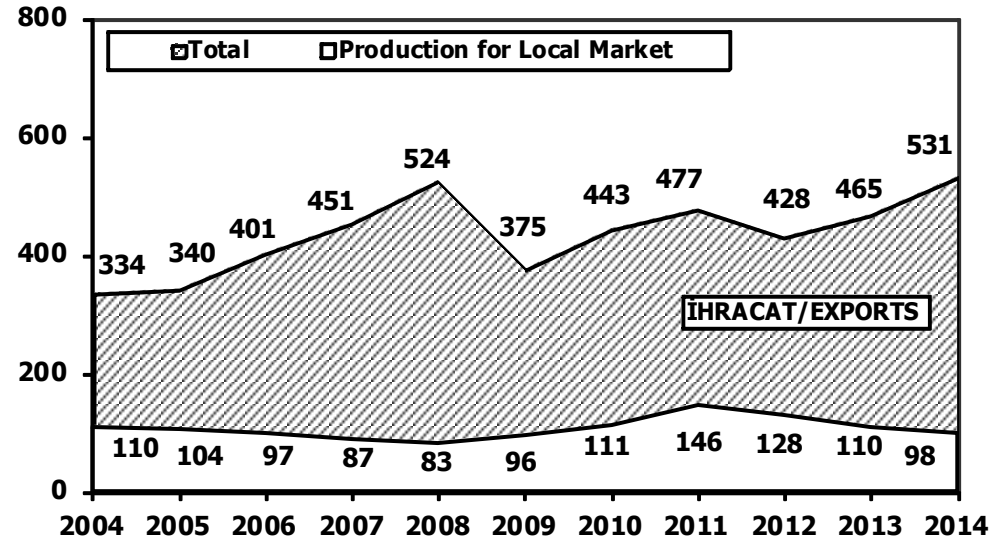
K.KAMYON : AYA 3.5-12 Ton (L.Truck:GVW 3.5-12 Ton)
B.KAMYON : AYA 12 Ton'dan Büyük (M.Truck:GVW 12 Ton And Up)

TİPLER	EYLÜL AYI ÜRETİMİ September Production		9 AYLIK ÜRETİM 9 Months Production		DEĞİŞİM % Percent Change %	
	2013	2014	2013	2014	EYLÜL September	9 AY 9 Months
OTOMOBİL - Pass.Car	65.199	72.120	464.530	531.492	11	14
TİCARİ ARAÇLAR - Commercial Vehicles	46.317	44.161	375.613	304.290	-5	-19
* B. KAMYON - M. Truck	2.248	2.798	19.292	19.268	24	0
* K. KAMYON - L. Truck	552	382	3.160	2.418	-31	-23
* KAMYONET - Pick Up	38.111	36.589	314.296	249.382	-4	-21
* OTOBÜS - Bus	734	446	6.717	4.892	-39	-27
* MİNİBÜS - Minibus	4.122	3.656	28.341	24.140	-11	-15
* MİDİBÜS - Midibus	550	290	3.807	4.190	-47	10
TAŞIT ARAÇLARI TOPLAM - MV Total	111.516	116.281	840.143	835.782	4	-1
TRAKTÖR - F.Tractor	4.391	5.038	30.326	36.649	15	21
GENEL TOPLAM - Grand Total	115.907	121.319	870.469	872.431	5	0

Toplam Üretim ve Otomobil Üretimi (x1000) (Ocak-Eylül)
Total & P.Cars Production (x1000) (January- September)



Otomobil Üretimi ve İhracat (x1000) (Ocak-Eylül)
P.Cars Production & Exports (x1000) (January- September)



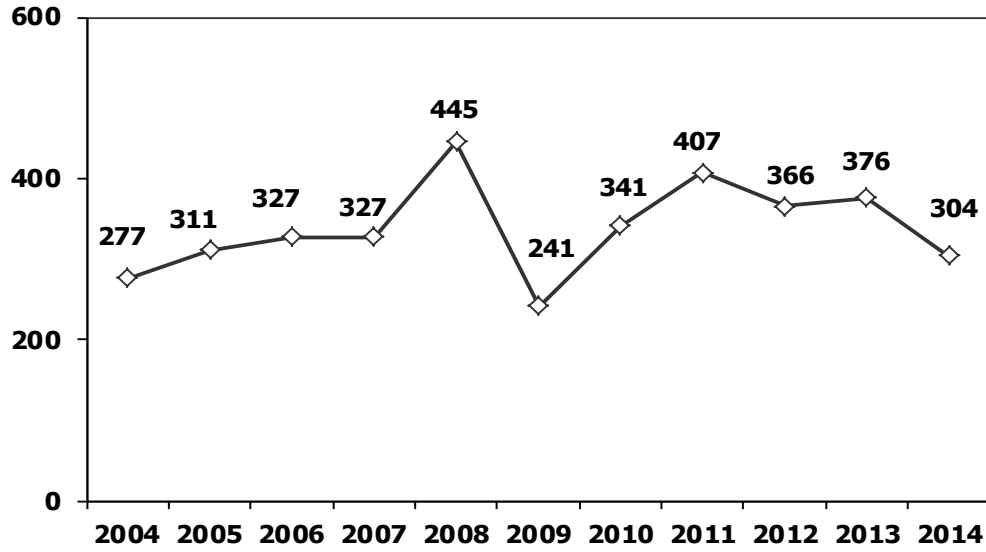
9 Aylık Üretim (9 Months Production)

FİRMALAR Companies	OTOMOBİL Pass.Car	%	K.KAMYON L.Truck	%	B.KAMYON Mid.Truck	%	KAMYONET Pick Up	%	OTOBÜS Bus	%	MİNİBÜS Mini-Bus	%	MİDİBÜS Midi-Bus	%	TRAKTÖR F.Tractor	%	TOPLAM Totals
A.I.O.S.	0	0	2.118	88	0	0	1.676	1	77	2	0	0	1.394	33	0	0	5.265
Ford otosan	6.830	1	0	0	5.436	28	133.647	54	0	0	23.073	96	0	0	0	0	168.986
Hattat	0	0	0	0	0	0	0	0	0	0	0	0	0	0	2.100	6	2.100
Honda Türkiye	9.295	2	0	0	0	0	0	0	0	0	0	0	0	0	0	0	9.295
Hyundai Assan	148.297	28	0	0	0	0	0	0	0	0	0	0	0	0	0	0	148.297
Karsan	0	0	0	0	0	0	9	0	43	1	1.056	4	73	2	0	0	1.181
M.Benz Türk	0	0	0	0	13.832	72	0	0	2.750	56	0	0	0	0	0	0	16.582
MAN Türkiye	0	0	0	0	0	0	0	0	778	16	0	0	0	0	0	0	778
Otokar	0	0	300	12	0	0	234	0	311	6	11	0	1.585	38	0	0	2.441
Oyak Renault	225.384	42	0	0	0	0	0	0	0	0	0	0	0	0	0	0	225.384
Temsa	0	0	0	0	0	0	0	0	933	19	0	0	1.138	27	0	0	2.071
Tofaş	42.387	8	0	0	0	0	113.816	46	0	0	0	0	0	0	0	0	156.203
Toyota	99.299	19	0	0	0	0	0	0	0	0	0	0	0	0	0	0	99.299
Türk Traktör	0	0	0	0	0	0	0	0	0	0	0	0	0	0	34.549	94	34.549
TOPLAM	531.492	100	2.418	100	19.268	100	249.382	100	4.892	100	24.140	100	4.190	100	36.649	100	872.431

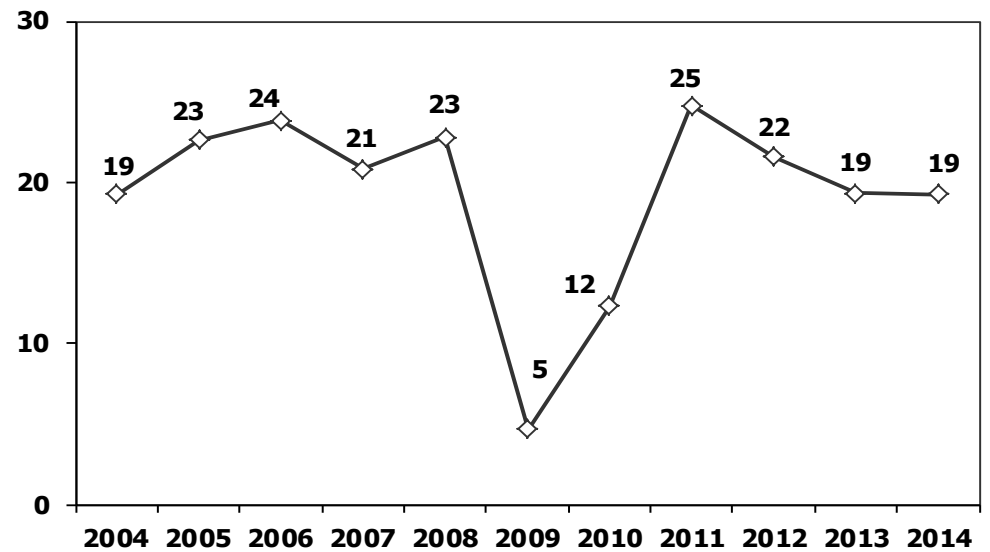
Eylül Ayı Üretimi (September Production)

FİRMALAR Companies	OTOMOBİL Pass.Car	%	K.KAMYON L.Truck	%	B.KAMYON Mid.Truck	%	KAMYONET Pick Up	%	OTOBÜS Bus	%	MİNİBÜS Mini-Bus	%	MİDİBÜS Midi-Bus	%	TRAKTÖR F.Tractor	%	TOPLAM Totals
A.I.O.S.	0	0	370	97	0	0	324	1	12	3	0	0	137	47	0	0	843
FORD OTOSAN	1.153	2	0	0	895	32	20.155	55	0	0	3.446	94	0	0	0	0	25.649
HATTAT	0	0	0	0	0	0	0	0	0	0	0	0	0	0	301	6	301
HONDA TÜRKİYE	720	1	0	0	0	0	0	0	0	0	0	0	0	0	0	0	720
HYUNDAI ASSAN	19.724	27	0	0	0	0	0	0	0	0	0	0	0	0	0	0	19.724
KARSAN	0	0	0	0	0	0	0	0	0	0	210	6	16	6	0	0	226
M. BENZ TÜRK	0	0	0	0	1.903	68	0	0	236	53	0	0	0	0	0	0	2.139
MANTÜRKİYE	0	0	0	0	0	0	0	0	120	27	0	0	0	0	0	0	120
OTOKAR	0	0	12	3	0	0	30	0	27	6	0	0	137	47	0	0	206
OYAK RENAULT	31.412	44	0	0	0	0	0	0	0	0	0	0	0	0	0	0	31.412
TEMSA	0	0	0	0	0	0	0	0	51	11	0	0	0	0	0	0	51
TOFAŞ	6.849	9	0	0	0	0	16.080	44	0	0	0	0	0	0	0	0	22.929
TOYOTA	12.262	17	0	0	0	0	0	0	0	0	0	0	0	0	0	0	12.262
TÜRK TRAKTÖR	0	0	0	0	0	0	0	0	0	0	0	0	0	0	4.737	94	4.737
TOPLAM	72.120	100	382	100	2.798	100	36.589	100	446	100	3.656	100	290	100	5.038	100	121.319

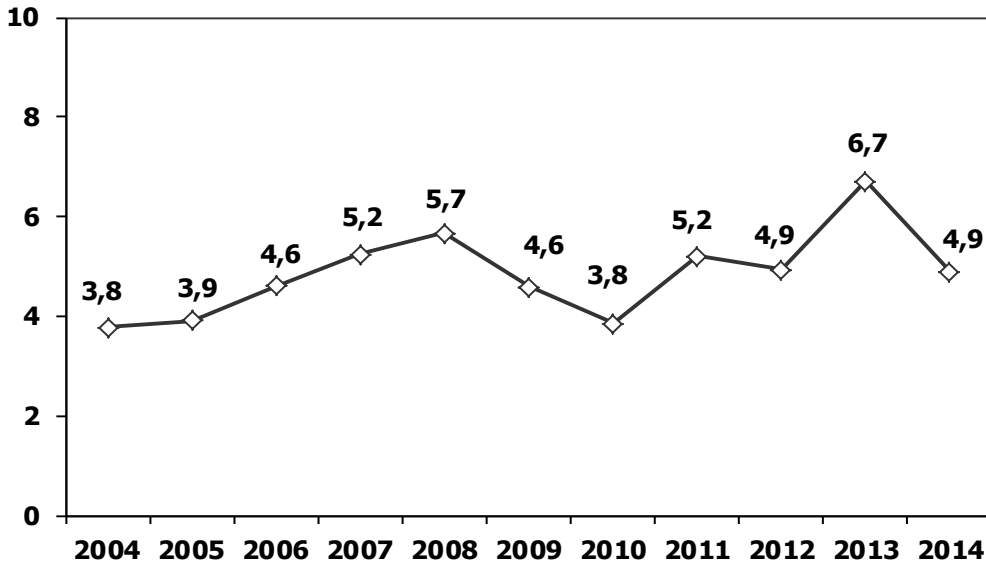
Ticari Araç Üretimi (x1000) (Ocak-Eylül)
Commercial Vehicle Production (x1000) (January- September)



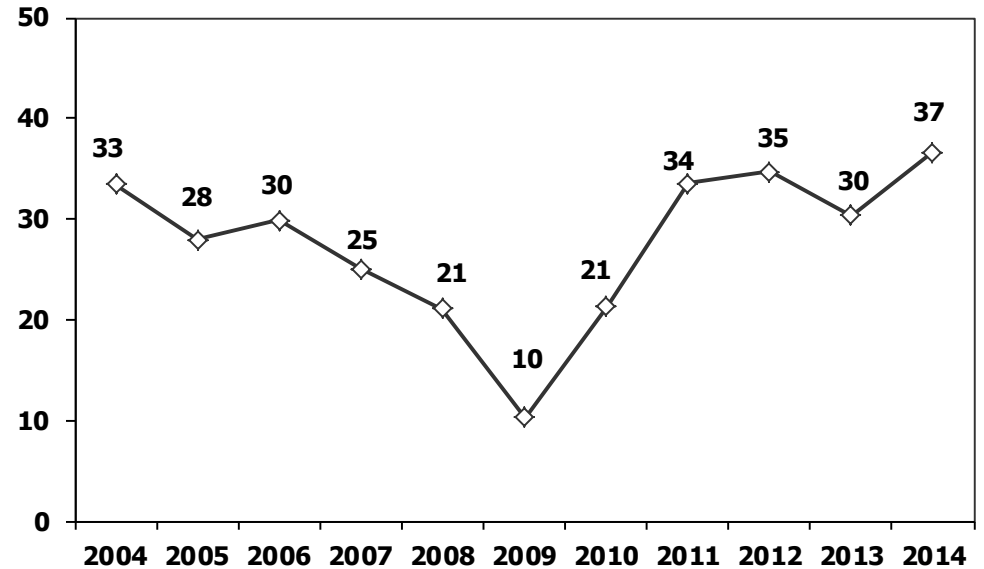
(AYA >12 Ton) **Büyük Kamyon Üretimi** (x1000) (Ocak-Eylül)
(GVW >12 Ton) Heavy Truck Production (x1000) (January- September)



Otobüs Üretimi (x1000) (Ocak-Eylül)
Bus Production (x1000) (January- September)

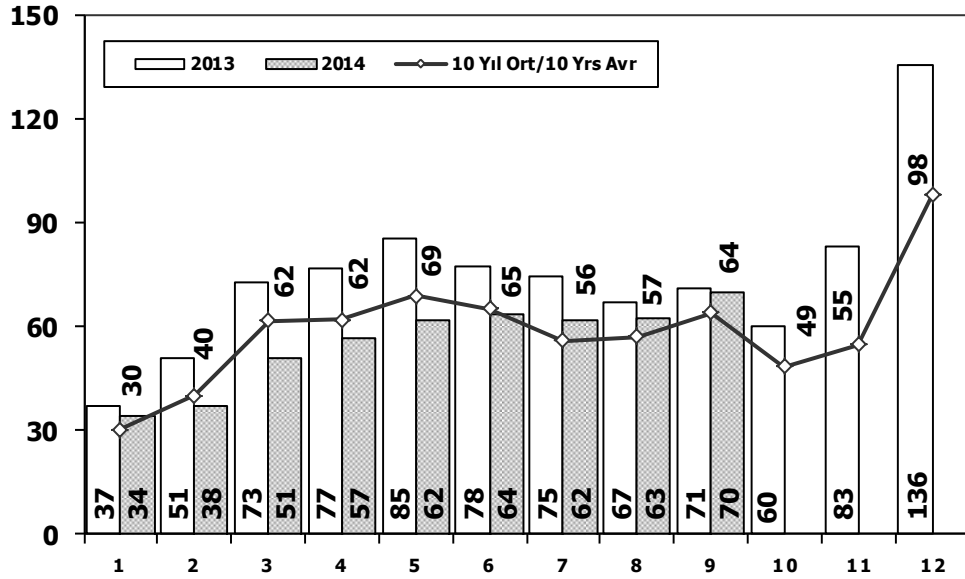


Traktör Üretimi (x1000) (Ocak-Eylül)
F. Tractor Production (x1000) (January- September)



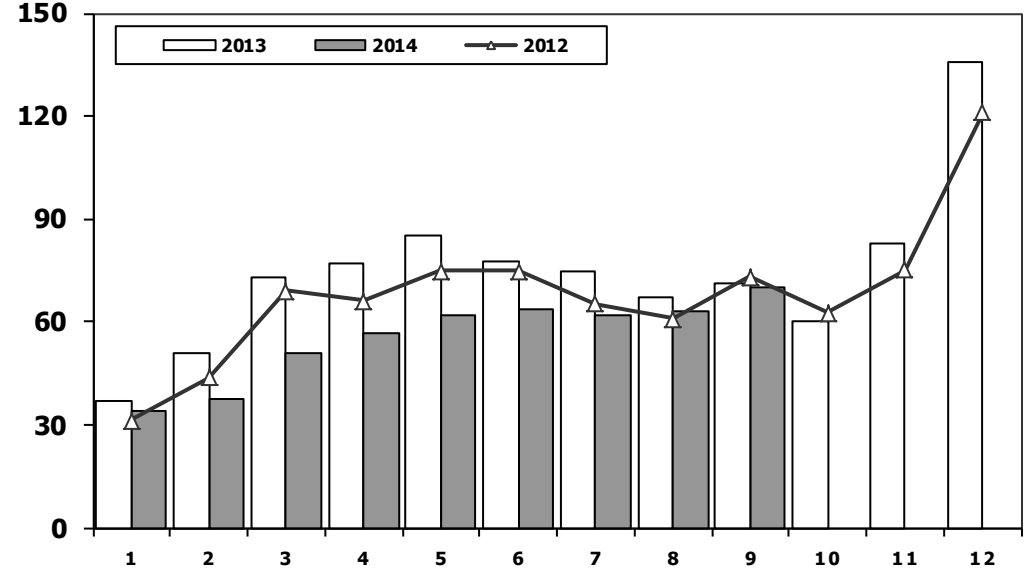
Toplam Pazarın Analizi (x1000)

Total Market Analysis (x1000)



Toplam Pazar (x1000)

Total Market (x1000)

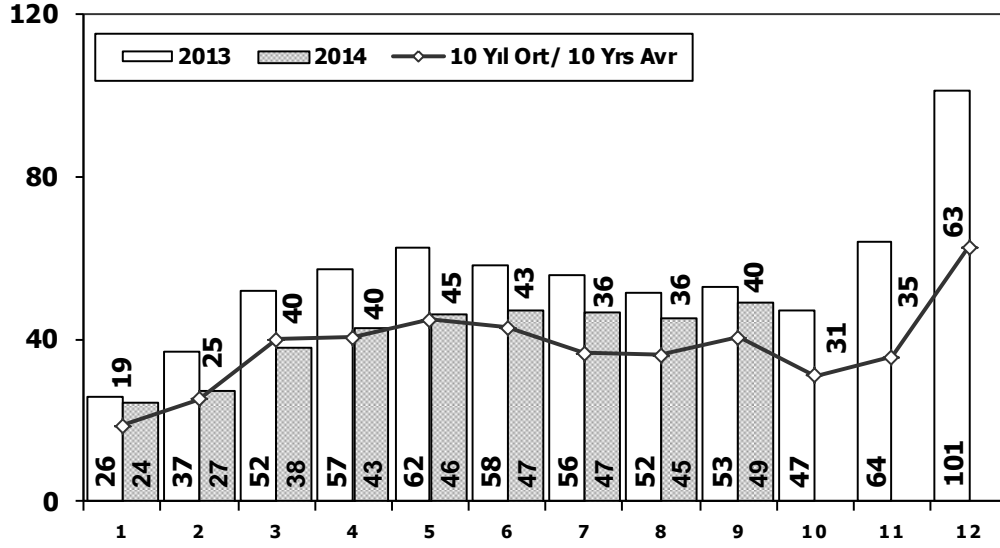


Aylar / Months	10 Yil Ort. 10 Yrs Avr. (x1000)	2014 (x1000)	%
1	30,3	34,3	13,0
2	40,3	37,5	-6,8
3	61,8	50,9	-17,7
4	62,0	56,7	-8,4
5	69,1	61,9	-10,5
6	65,2	63,9	-2,1
7	56,0	62,2	11,0
8	57,1	62,8	10,1
9	64,1	70,1	9,4
Total	506,0	500,3	-1,1

	1	2	3	4	5	6	7	8	9	10	11	12	9 Ay/Mo	Total
2004	38.621	39.389	71.723	77.056	84.634	63.228	57.307	56.422	59.429	56.153	52.237	85.070	547.809	741.269
2005	22.687	38.291	64.502	60.873	71.383	64.379	63.847	68.647	66.580	60.791	65.719	110.838	521.189	758.537
2006	29.969	44.646	65.090	68.853	83.289	58.203	40.037	47.374	49.629	39.805	55.898	82.722	487.090	665.515
2007	24.950	31.702	45.488	45.633	51.255	51.661	50.117	54.171	50.078	56.058	67.017	106.076	405.055	634.206
2008	33.792	38.121	56.814	50.967	51.627	49.393	44.692	46.592	46.829	35.147	28.152	44.418	418.827	526.544
2009	20.631	22.846	56.531	54.426	64.887	63.102	30.246	37.092	83.403	22.117	29.202	91.386	433.164	575.869
2010	21.050	32.313	53.828	57.079	61.628	63.390	63.718	64.645	66.601	76.780	77.406	154.734	484.252	793.172
2011	47.658	62.348	83.333	82.071	85.093	85.863	65.364	61.378	63.643	72.640	67.195	134.281	636.751	910.867
2012	31.219	43.827	68.957	66.014	74.820	74.781	65.122	60.848	73.197	62.677	75.045	121.113	558.785	817.620
2013	37.140	50.931	72.688	77.015	85.421	77.771	74.726	67.383	71.037	60.399	83.017	135.596	614.112	893.124
2014	34.290	37.500	50.850	56.744	61.865	63.880	62.192	62.837	70.143	0	0	0	500.301	500.301

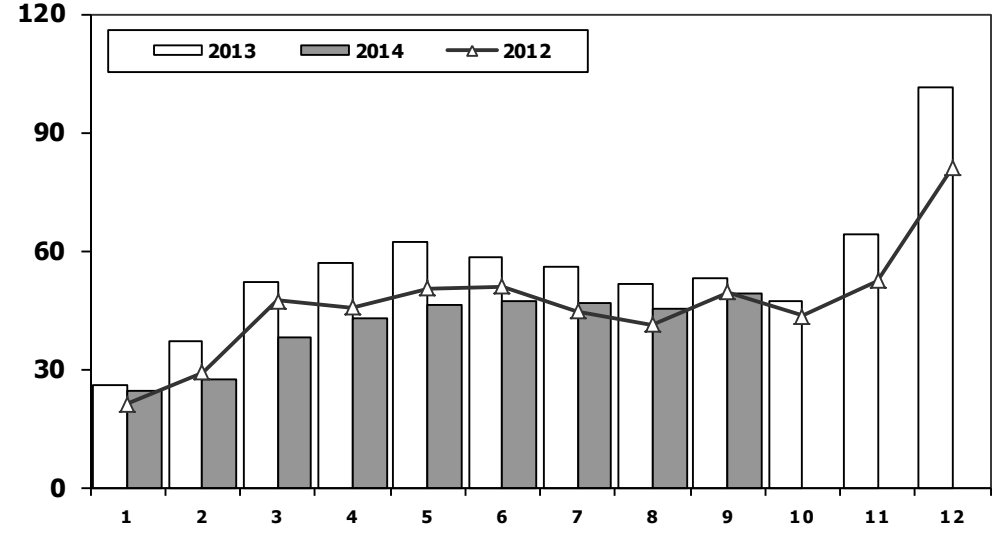
Otomobil Pazarının Analizi (x1000)

P.Cars Market Analysis (x1000)



Otomobil Pazarı (x1000)

P.Cars Market (x1000)

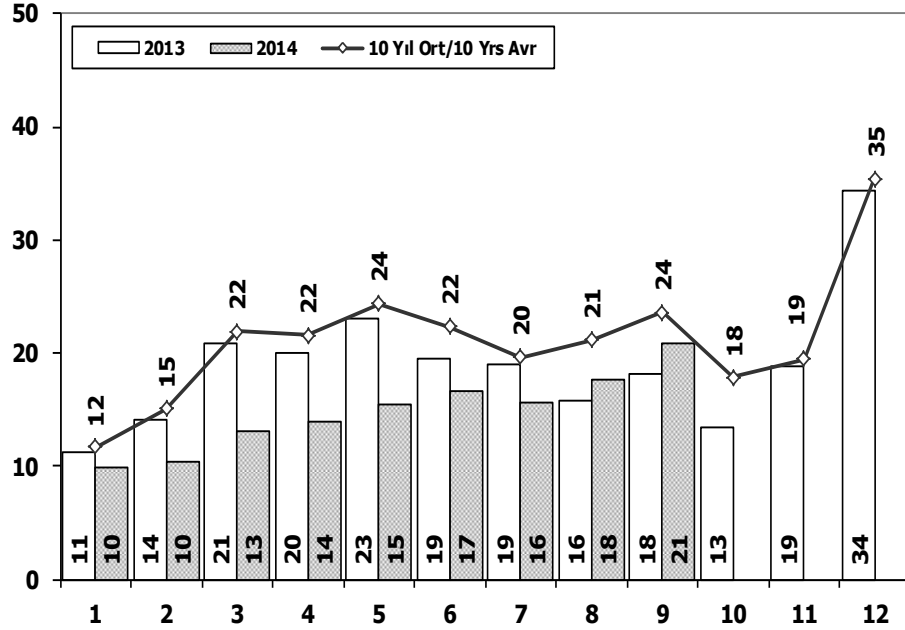


Aylar / Months	10 Yil Ort. 10 Yrs Avr. (x1000)	2014 (x1000)	%
1	18,7	24,4	30,5
2	25,2	27,2	7,9
3	39,9	37,8	-5,3
4	40,4	42,8	5,9
5	44,8	46,4	3,6
6	42,9	47,3	10,2
7	36,4	46,6	28,1
8	36,0	45,1	25,5
9	40,5	49,3	21,7
Total	324,6	366,8	13,0

	1	2	3	4	5	6	7	8	9	10	11	12	9 Ay/Mo	Total
2004	25.625	23.695	46.075	47.995	54.610	37.671	33.410	33.709	33.383	34.292	30.547	50.197	336.173	451.209
2005	11.595	21.012	38.129	36.206	38.480	40.900	38.969	38.648	36.410	34.960	37.841	65.447	300.349	438.597
2006	16.506	24.929	36.996	40.177	48.521	32.982	22.653	24.873	27.517	21.237	30.477	46.351	275.154	373.219
2007	13.186	17.212	24.336	25.204	29.067	30.126	28.246	28.469	27.662	32.569	39.643	61.745	223.508	357.465
2008	18.588	21.196	34.147	30.313	31.477	28.724	25.530	26.102	27.053	19.788	17.201	25.879	243.130	305.998
2009	13.173	14.492	40.622	36.202	44.188	41.019	16.637	22.537	52.162	13.828	17.781	57.178	281.032	369.819
2010	12.594	20.651	33.958	36.549	40.467	42.086	41.399	42.222	42.477	47.859	50.061	99.461	312.403	509.784
2011	29.868	39.004	54.023	53.835	56.302	56.714	43.518	38.875	39.964	47.508	44.951	88.957	412.103	593.519
2012	21.077	29.189	47.270	45.645	50.460	50.849	44.531	41.236	49.360	43.440	52.297	80.926	379.617	556.280
2013	25.835	36.814	51.785	56.999	62.383	58.290	55.712	51.611	52.925	46.985	64.117	101.199	452.354	664.655
2014	24.368	27.167	37.812	42.769	46.379	47.278	46.602	45.131	49.262	0	0	0	366.768	366.768

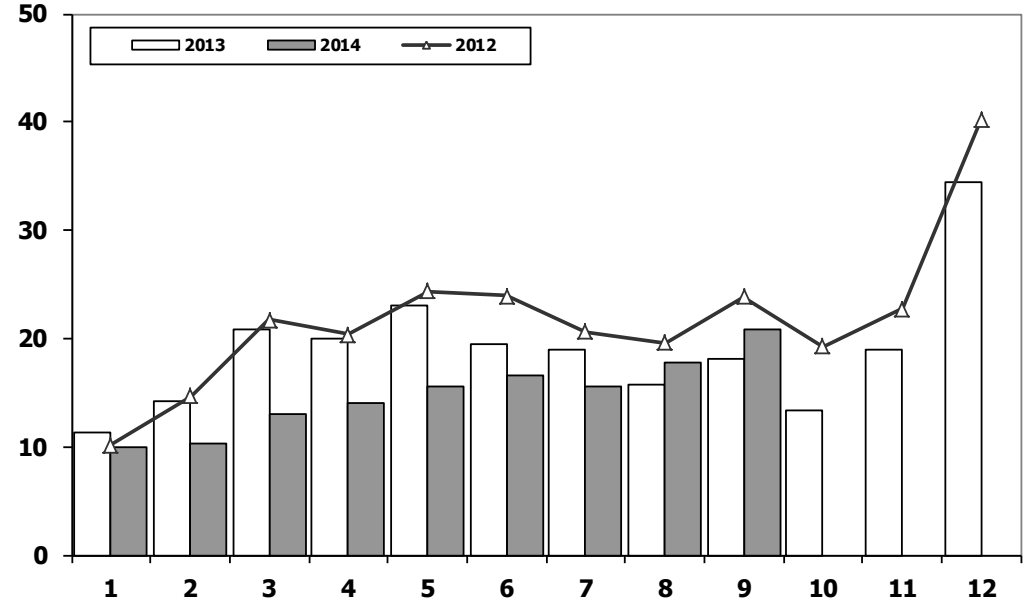
Ticari Araç Pazarının Analizi (x1000)

CV Market Analysis (x1000)



Ticari Araç Pazarı (x1000)

CV Total Market (Local + Imports) (x1000)

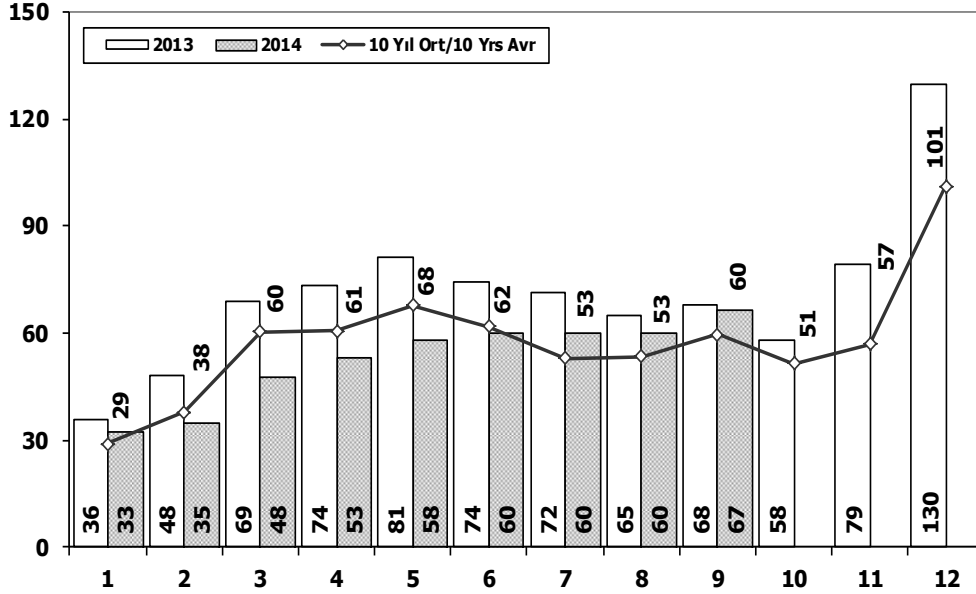


Aylar / Months	10 Yil Ort. 10 Yrs Avr. (x1000)	2014 (x1000)	%
1	11,7	9,9	-14,9
2	15,1	10,3	-31,5
3	21,9	13,0	-40,5
4	21,6	14,0	-35,2
5	24,4	15,5	-36,4
6	22,3	16,6	-25,7
7	19,6	15,6	-20,6
8	21,1	17,7	-16,2
9	23,6	20,9	-11,7
Total	181,3	133,5	-26,4

	1	2	3	4	5	6	7	8	9	10	11	12	9 Ay/Mo	Total
2004	12.996	15.694	25.648	29.061	30.024	25.557	23.897	22.713	26.046	21.861	21.690	34.873	211.636	290.060
2005	11.092	17.279	26.373	24.667	32.903	23.479	24.878	29.999	30.170	25.831	27.878	45.391	220.840	319.940
2006	13.463	19.717	28.094	28.676	34.768	25.221	17.384	22.501	22.112	18.568	25.421	36.371	211.936	292.296
2007	11.764	14.490	21.152	20.429	22.188	21.535	21.871	25.702	22.416	23.489	27.374	44.331	181.547	276.741
2008	15.204	16.925	22.667	20.654	20.150	20.669	19.162	20.490	19.776	15.359	10.951	18.539	175.697	220.546
2009	7.458	8.354	15.909	18.224	20.699	22.083	13.609	14.555	31.241	8.289	11.421	34.208	152.132	206.050
2010	8.456	11.662	19.870	20.530	21.161	21.304	22.319	22.423	24.124	28.921	27.345	55.273	171.849	283.388
2011	17.790	23.344	29.310	28.236	28.791	29.149	21.846	22.503	23.679	25.132	22.244	45.324	224.648	317.348
2012	10.142	14.638	21.687	20.369	24.360	23.932	20.591	19.612	23.837	19.237	22.748	40.187	179.168	261.340
2013	11.305	14.117	20.903	20.016	23.038	19.481	19.014	15.772	18.112	13.414	18.900	34.397	161.758	228.469
2014	9.922	10.333	13.038	13.975	15.486	16.602	15.590	17.706	20.881	0	0	0	133.533	133.533

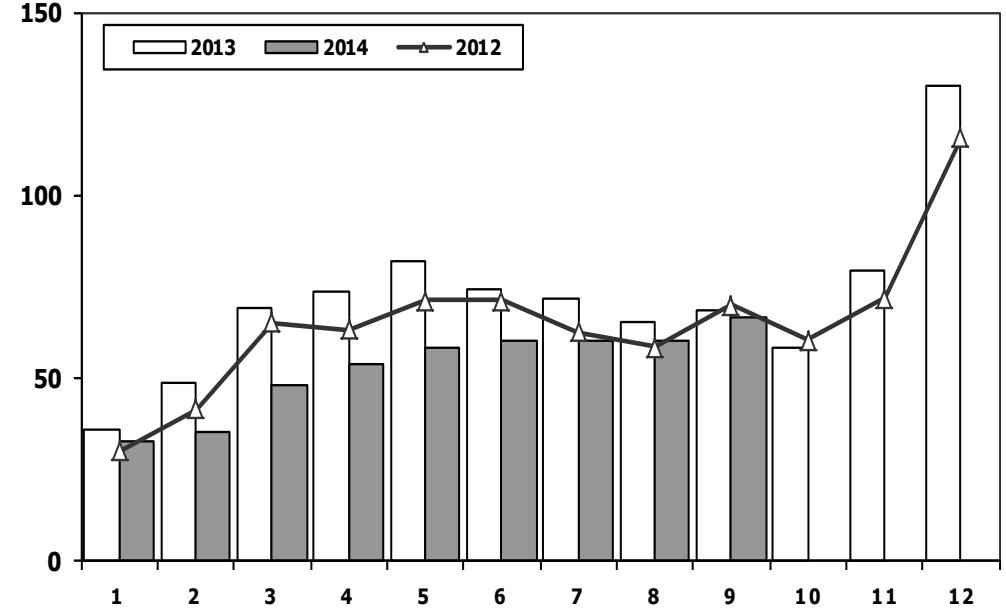
Hafif Araç Pazarının Analizi (x1000)

LV Market Analysis (x1000)



Hafif Araç Pazarı (x1000)

LV Total Market (Local + Imports) (x1000)

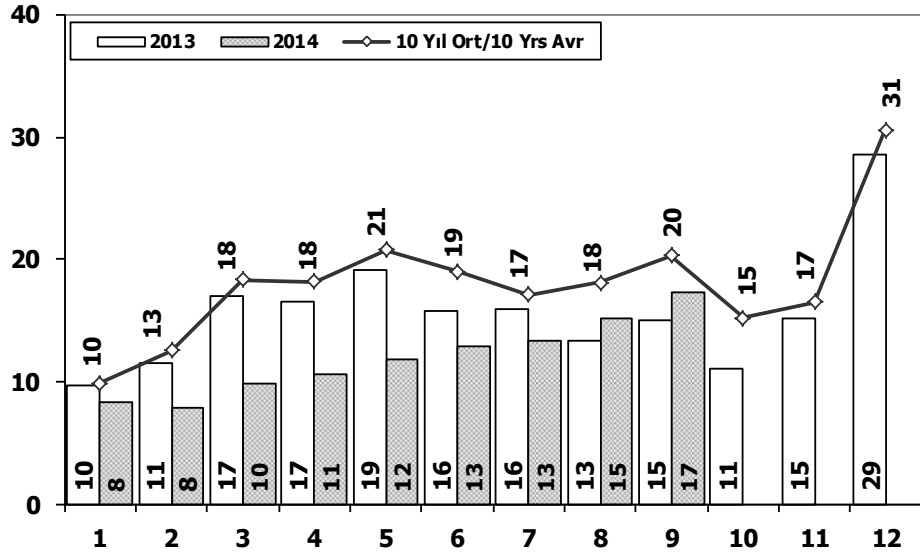


Aylar / Months	10 Yil Ort. 10 Yrs Avr. (x1000)	2014 (x1000)	%
1	28,9	32,7	12,9
2	37,9	35,0	-7,7
3	60,2	47,6	-21,0
4	60,6	53,3	-12,0
5	67,8	58,1	-14,3
6	61,9	60,2	-2,7
7	53,0	59,9	13,1
8	53,4	60,2	12,8
9	59,7	66,5	11,4
Total	483,4	473,5	-2,1

	1	2	3	4	5	6	7	8	9	10	11	12	9 Ay/Mo	Total
2004	36.352	37.079	67.144	73.075	80.290	59.730	54.816	52.876	55.609	53.000	49.200	78.924	516.971	698.095
2005	20.747	35.766	60.707	56.844	67.357	60.796	61.015	64.011	61.954	56.638	61.364	103.209	489.197	710.408
2006	27.917	40.938	60.052	64.038	78.229	54.355	37.251	43.767	46.109	36.542	51.867	76.787	452.656	617.852
2007	23.117	29.184	41.890	42.366	47.938	48.674	47.490	50.558	46.581	52.725	63.313	100.926	377.798	594.762
2008	31.527	35.251	53.649	47.701	48.598	46.324	42.156	43.670	43.932	32.884	26.253	42.078	392.808	494.023
2009	19.606	21.742	55.111	52.640	63.191	61.067	28.845	35.609	81.397	21.033	27.962	88.923	419.208	557.126
2010	20.095	31.172	51.769	54.946	59.377	60.896	61.345	61.764	63.814	73.404	73.962	148.369	465.178	760.913
2011	44.892	58.663	78.403	77.695	80.646	81.573	63.044	58.406	60.129	69.421	63.657	127.910	603.451	864.439
2012	29.545	41.324	64.884	62.949	70.863	71.067	62.304	58.148	69.629	59.938	71.710	115.400	530.713	777.761
2013	35.523	48.307	68.774	73.575	81.468	74.096	71.596	65.043	67.963	58.014	79.301	129.718	586.345	853.378
2014	32.670	35.021	47.581	53.305	58.121	60.163	59.907	60.199	66.531	0	0	0	473.498	473.498

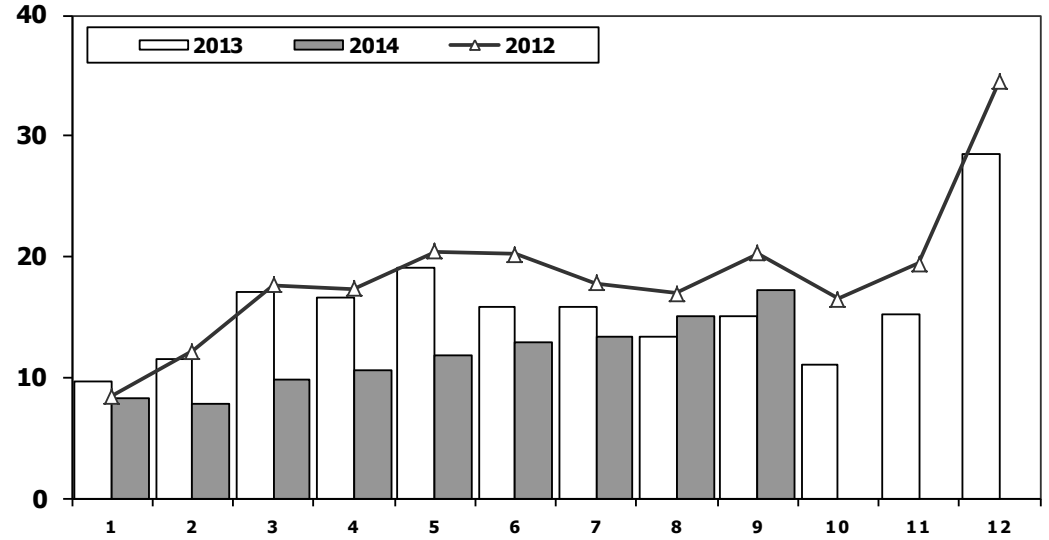
Hafif Ticari Araç Pazarının Analizi (x1000)

LCV Market Analysis (x1000)



Hafif Ticari Araç Pazarı (x1000)

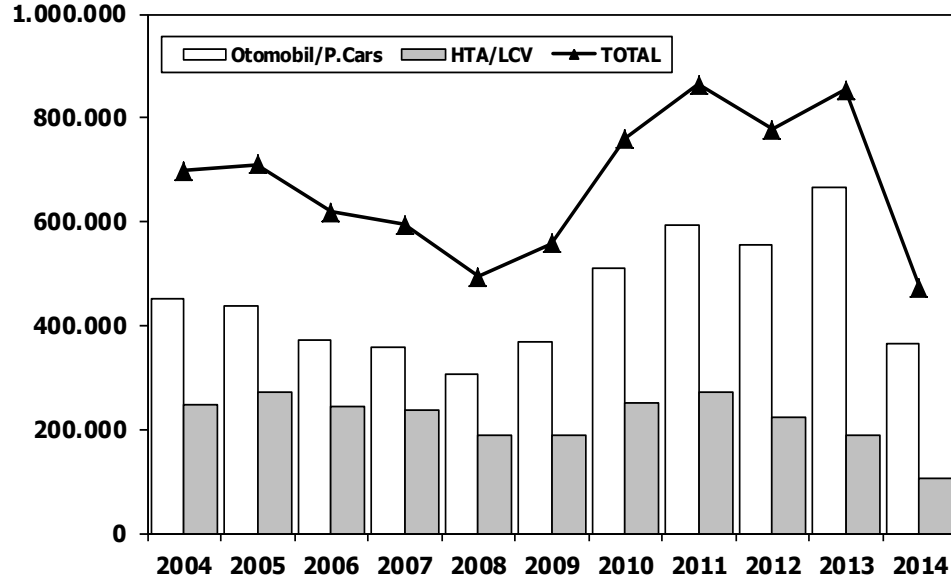
LCV Total Market (Local + Imports) (x1000)



Aylar / Months	10 Yil Ort. 10 Yrs Avr. (x1000)	2013 (x1000)	%
1	9,9	8,3	-16,0
2	12,6	7,9	-37,5
3	18,4	9,8	-46,8
4	18,2	10,5	-42,2
5	20,8	11,7	-43,6
6	19,0	12,9	-32,2
7	17,1	13,3	-22,3
8	18,1	15,1	-17,0
9	20,3	17,3	-15,0
Total	154,4	106,7	-30,9

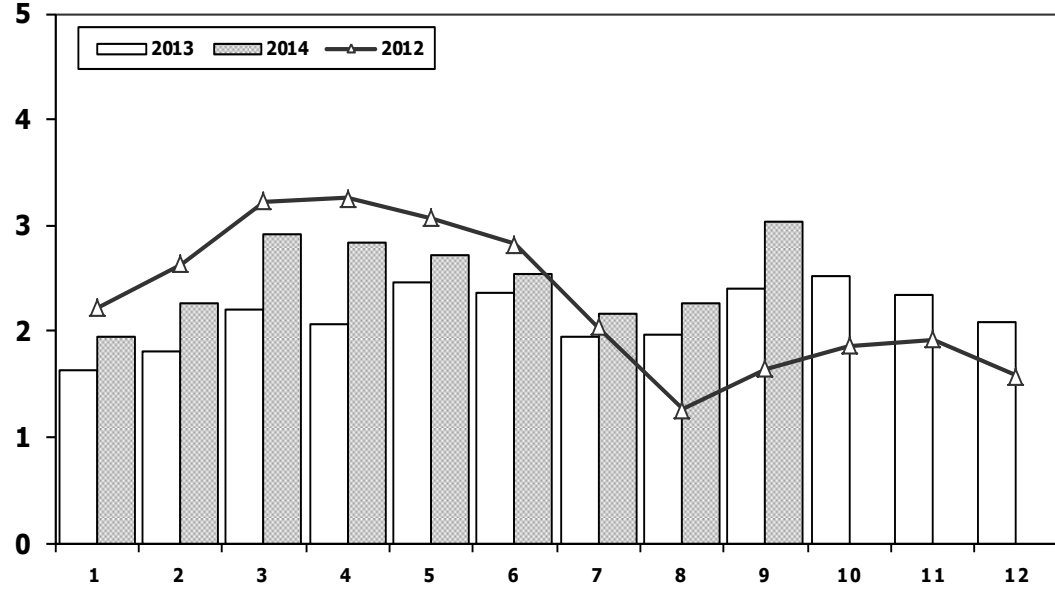
	1	2	3	4	5	6	7	8	9	10	11	12	9 Ay/Mo	Total
2004	10.727	13.384	21.069	25.080	25.680	22.059	21.406	19.167	22.226	18.708	18.653	28.727	180.798	246.886
2005	9.152	14.754	22.578	20.638	28.877	19.896	22.046	25.363	25.544	21.678	23.523	37.762	188.848	271.811
2006	11.411	16.009	23.056	23.861	29.708	21.373	14.598	18.894	18.592	15.305	21.390	30.436	177.502	244.633
2007	9.931	11.972	17.554	17.162	18.871	18.548	19.244	22.089	18.919	20.156	23.670	39.181	154.290	237.297
2008	12.939	14.055	19.502	17.388	17.121	17.600	16.626	17.568	16.879	13.096	9.052	16.199	149.678	188.025
2009	6.433	7.250	14.489	16.438	19.003	20.048	12.208	13.072	29.235	7.205	10.181	31.745	138.176	187.307
2010	7.501	10.521	17.811	18.397	18.910	18.810	19.946	19.542	21.337	25.545	23.901	48.908	152.775	251.129
2011	15.024	19.659	24.380	23.860	24.344	24.859	19.526	19.531	20.165	21.913	18.706	38.953	191.348	270.920
2012	8.468	12.135	17.614	17.304	20.403	20.218	17.773	16.912	20.269	16.498	19.413	34.474	151.096	221.481
2013	9.688	11.493	16.989	16.576	19.085	15.806	15.884	13.432	15.038	11.029	15.184	28.519	133.991	188.723
2014	8.302	7.854	9.769	10.536	11.742	12.885	13.305	15.068	17.269	0	0	0	106.730	106.730

Hafif Araç Pazarı (AYA < 3.5 Ton) Light Vehicle Market (GVW < 3.5 Ton)



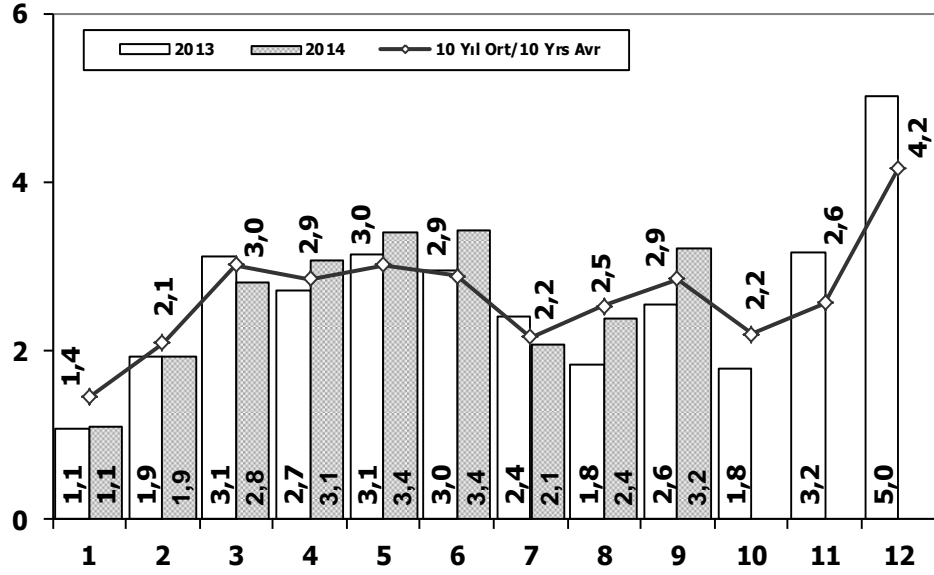
	2004	2005	2006	2007	2008	2009	2010	2011	2012	2013	2014
Otomobil/P.Cars	451.209	438.597	373.219	357.465	305.998	369.819	509.784	593.519	556.280	664.655	366.768
HTA/LCV	246.886	271.811	244.633	237.297	188.025	187.307	251.129	270.920	221.481	188.723	106.730
TOTAL	698.095	710.408	617.852	594.762	494.023	557.126	760.913	864.439	777.761	853.378	473.498
HTA/LCV (%)	35	38	40	40	38	34	33	31	28	22	23

Traktör Pazarı (x1000) F.Tractor Market (x1000)

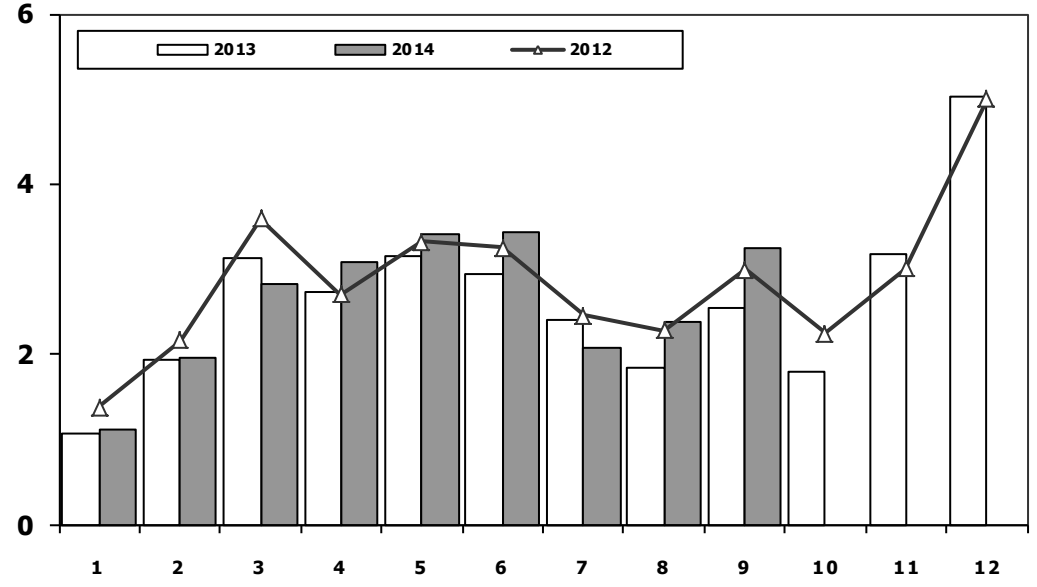


	1	2	3	4	5	6	7	8	9	10	11	12	9 Ay/Mo	Total
2004	1.946	1.874	2.909	3.260	2.863	2.816	1.988	2.209	2.509	1.989	2.198	1.364	22.374	27.925
2005	1.026	1.636	2.001	2.599	2.569	2.780	2.148	2.819	2.567	2.477	2.297	2.089	20.145	27.008
2006	1.578	2.493	2.746	2.841	3.561	2.356	1.685	2.177	2.756	1.915	2.353	1.925	22.193	28.386
2007	1.812	1.778	2.063	2.107	2.266	1.853	1.653	2.065	2.372	2.239	2.231	1.602	17.969	24.041
2008	1.510	1.427	1.933	1.692	1.689	1.592	1.275	924	904	609	707	359	12.946	14.621
2009	267	344	388	638	759	828	741	534	586	765	725	715	5.085	7.290
2010	714	903	1.432	1.653	1.736	1.673	1.613	1.527	2.351	2.787	2.656	2.345	13.602	21.390
2011	2.458	2.610	3.105	3.403	3.847	3.599	2.952	1.559	2.957	2.823	2.603	2.807	26.490	34.723
2012	2.216	2.632	3.223	3.259	3.067	2.821	2.037	1.262	1.648	1.858	1.921	1.579	22.165	27.523
2013	1.633	1.817	2.196	2.070	2.455	2.370	1.955	1.969	2.396	2.510	2.343	2.080	18.861	25.794
2014	1.941	2.256	2.915	2.837	2.723	2.534	2.171	2.265	3.039	0	0	0	22.681	22.681

Kamyon Pazarının Analizi (x1000) AYA > 5 Ton Truck Market Analysis (x1000) GVW > 5 Ton



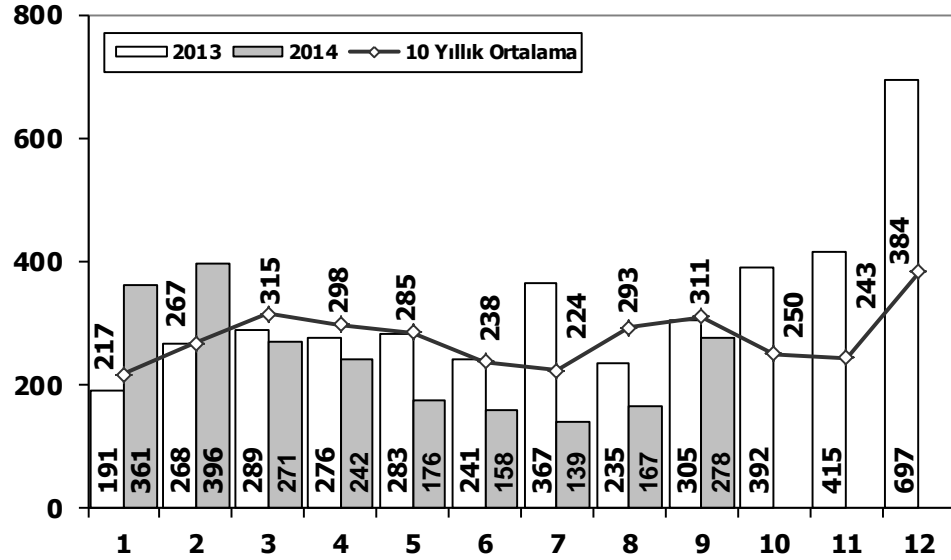
Kamyon Pazarı (x1000) AYA > 5 Ton Truck Market (x1000) GVW > 5 Ton



Aylar / Months	10 Yil Ort. 10 Yrs Avr. (x1000)	2014 (x100)	%
1	1,4	1,1	-22,9
2	2,1	1,9	-6,8
3	3,0	2,8	-6,7
4	2,9	3,1	8,1
5	3,0	3,4	12,8
6	2,9	3,4	18,8
7	2,2	2,1	-3,6
8	2,5	2,4	-5,7
9	2,9	3,2	13,4
Total	22,9	23,5	2,8

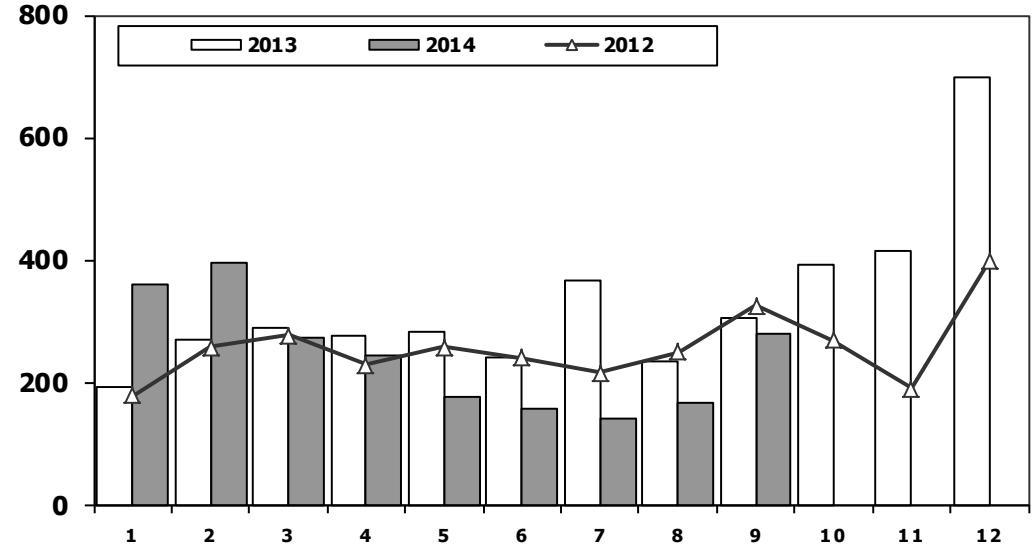
	1	2	3	4	5	6	7	8	9	10	11	12	9 Ay/Mo	Total
2004	1.863	1.949	3.983	3.352	3.651	3.118	2.234	2.897	3.285	2.727	2.629	5.517	26.332	37.205
2005	1.693	2.186	3.288	3.484	3.413	3.147	2.504	4.028	4.043	3.708	3.918	6.570	27.786	41.982
2006	1.767	3.310	4.467	4.180	4.449	3.398	2.472	3.142	3.052	2.926	3.550	5.358	30.237	42.071
2007	1.554	2.055	3.065	2.940	2.865	2.613	2.372	3.145	2.988	2.886	3.258	4.444	23.597	34.185
2008	1.797	2.309	2.621	2.578	2.459	2.526	2.067	2.377	2.390	1.790	1.512	1.834	21.124	26.260
2009	771	759	1.034	1.342	1.355	1.651	1.156	1.205	1.780	866	981	2.015	11.053	14.915
2010	777	968	1.772	1.807	1.966	2.205	2.093	2.446	2.444	3.071	3.136	5.677	16.478	28.362
2011	2.552	3.292	4.418	3.754	3.803	3.749	1.996	2.478	3.081	2.774	3.108	5.787	29.123	40.792
2012	1.375	2.159	3.595	2.697	3.321	3.250	2.450	2.277	2.991	2.244	3.006	5.000	24.115	34.365
2013	1.077	1.931	3.127	2.720	3.145	2.951	2.411	1.845	2.554	1.801	3.173	5.025	21.761	31.760
2014	1.117	1.949	2.818	3.092	3.405	3.438	2.083	2.390	3.238	0	0	0	23.530	23.530

Midibüs Pazarının Analizi (7-9 mt / 25-35 Kişilik) Midibus Market Analysis (7-9 mt / 25-35 Passengers)



Aylar / Months	10 Yıl Ort. 10 Yrs Avr.	2014	%
1	217	361	67
2	267	396	48
3	315	271	-14
4	298	242	-19
5	285	176	-38
6	238	158	-34
7	224	139	-38
8	293	167	-43
9	311	278	-11
Total	2.449	2.188	-11

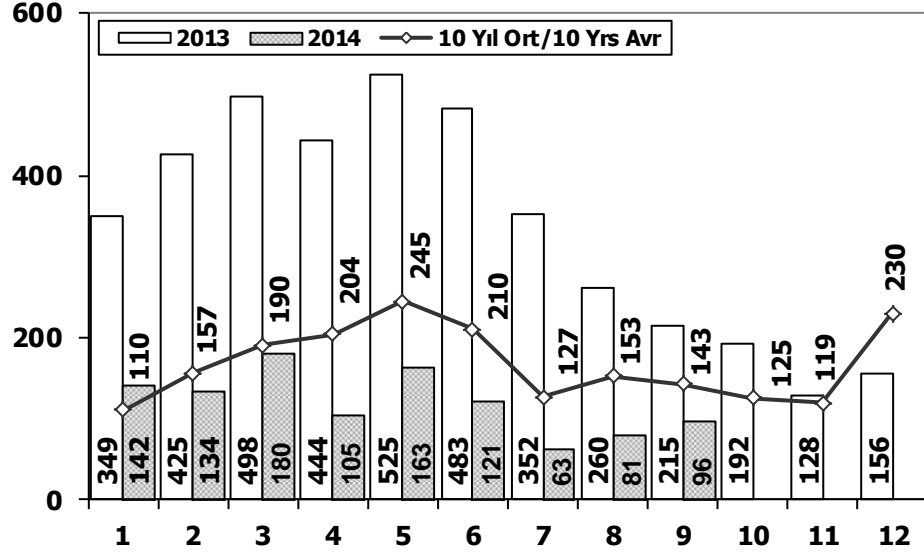
Midibüs Pazarı (7-9 mt / 25-35 Kişilik Midibüs) Midibus Market (7-9 mt / 25-35 Passengers)



	1	2	3	4	5	6	7	8	9	10	11	12	9 Ay/Mo	Total
2004	233	226	381	431	524	237	154	531	445	331	319	551	3.162	4.363
2005	182	258	432	393	439	269	252	459	436	329	328	574	3.120	4.351
2006	207	297	406	388	381	266	230	353	322	253	305	401	2.850	3.809
2007	207	272	404	238	302	283	164	365	399	279	283	465	2.634	3.661
2008	391	476	436	512	419	331	368	380	341	352	246	270	3.654	4.522
2009	154	124	160	220	174	198	160	175	168	143	206	323	1.533	2.205
2010	155	131	185	167	140	138	129	246	236	206	202	437	1.527	2.372
2011	138	195	294	316	280	258	211	305	301	276	260	270	2.298	3.104
2012	179	257	277	229	257	239	216	249	325	269	189	398	2.228	3.084
2013	191	268	289	276	283	241	367	235	305	392	415	697	2.455	3.959
2014	361	396	271	242	176	158	139	167	278	0	0	0	2.188	2.188

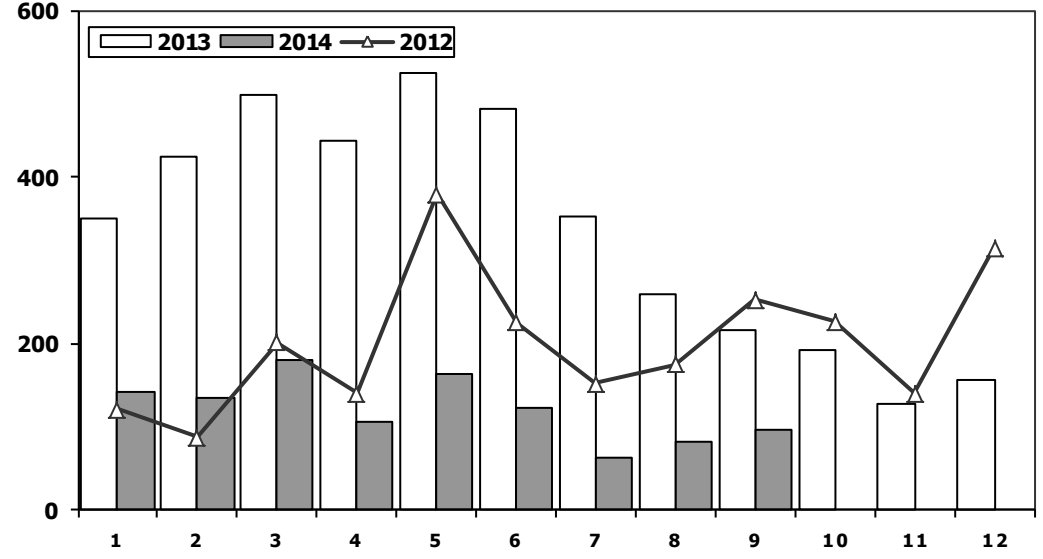
Otobüs Pazarının Analizi

Bus Market Analysis



Otobüs Pazarı

Bus Market

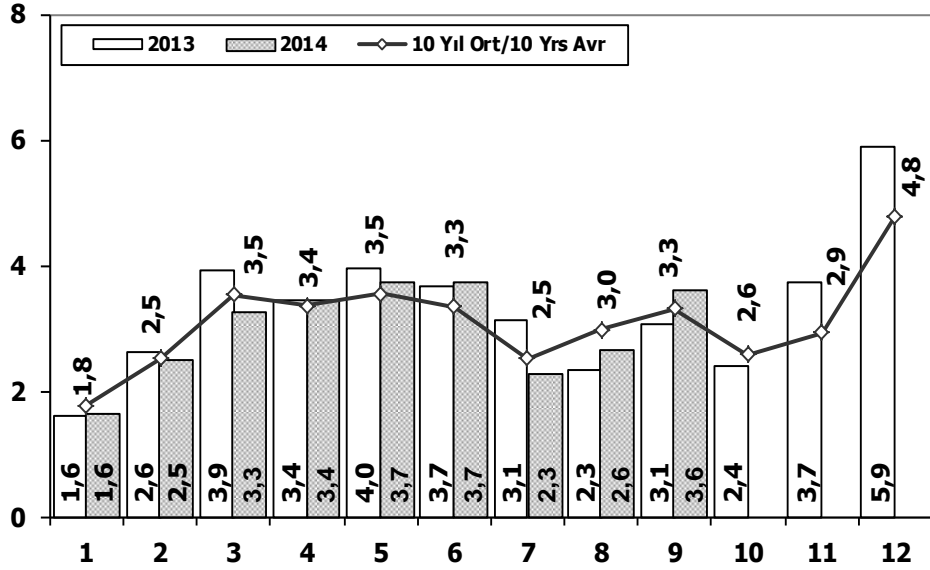


Aylar / Months	10 Yil Ort. 10 Yrs Avr.	2014	%
1	110	142	29
2	157	134	-14
3	190	180	-5
4	204	105	-49
5	245	163	-33
6	210	121	-42
7	127	63	-50
8	153	81	-47
9	143	96	-33
Total	1.538	1.085	-29

	1	2	3	4	5	6	7	8	9	10	11	12	9 Ay/Mo	Total
2004	173	135	215	198	169	143	103	118	90	95	89	78	1.344	1.606
2005	65	81	75	152	174	167	76	149	147	116	109	485	1.086	1.796
2006	78	101	165	247	230	184	84	112	146	84	176	176	1.347	1.783
2007	72	191	129	89	150	91	91	103	110	168	163	241	1.026	1.598
2008	77	85	108	176	151	212	101	165	166	121	141	236	1.241	1.739
2009	100	221	226	224	167	186	85	103	58	75	53	125	1.370	1.623
2010	23	42	102	159	145	151	151	189	107	99	106	251	1.069	1.525
2011	76	198	218	306	364	283	113	189	132	169	170	314	1.879	2.532
2012	120	87	201	139	379	225	152	174	252	226	140	315	1.729	2.410
2013	349	425	498	444	525	483	352	260	215	192	128	156	3.551	4.027
2014	142	134	180	105	163	121	63	81	96	0	0	0	1.085	1.085

Ağır Ticari Araç Pazarının Analizi (x1000)

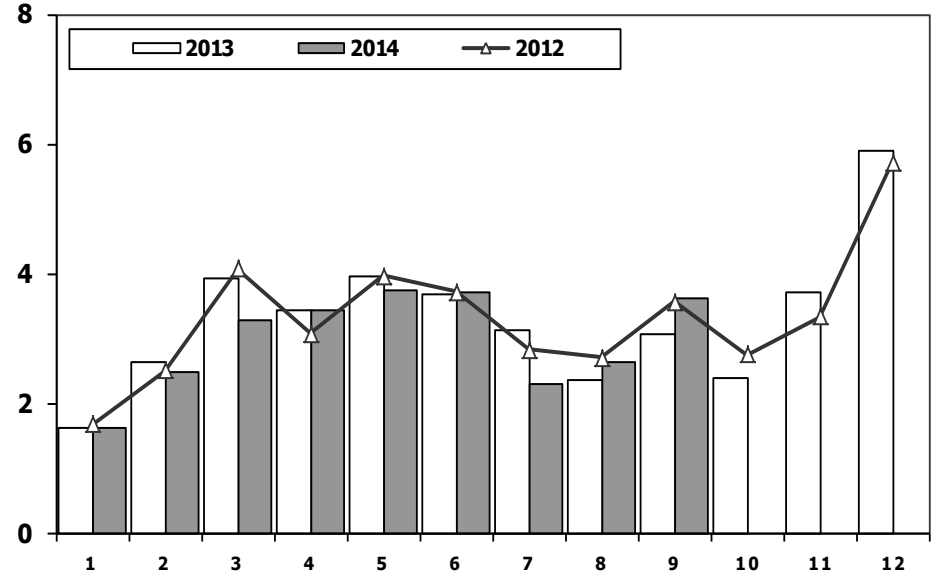
HCV Market Analysis (x1000)



Aylar / Months	10 Yıl Ort. 10 Yrs Avr. (x1000)	2013 (x1000)	%
1	1,8	1,6	-8,7
2	2,5	2,5	-1,5
3	3,5	3,3	-7,3
4	3,4	3,4	2,3
5	3,5	3,7	5,5
6	3,3	3,7	11,2
7	2,5	2,3	-9,0
8	3,0	2,6	-11,5
9	3,3	3,6	9,1
Total	26,9	26,8	-0,2

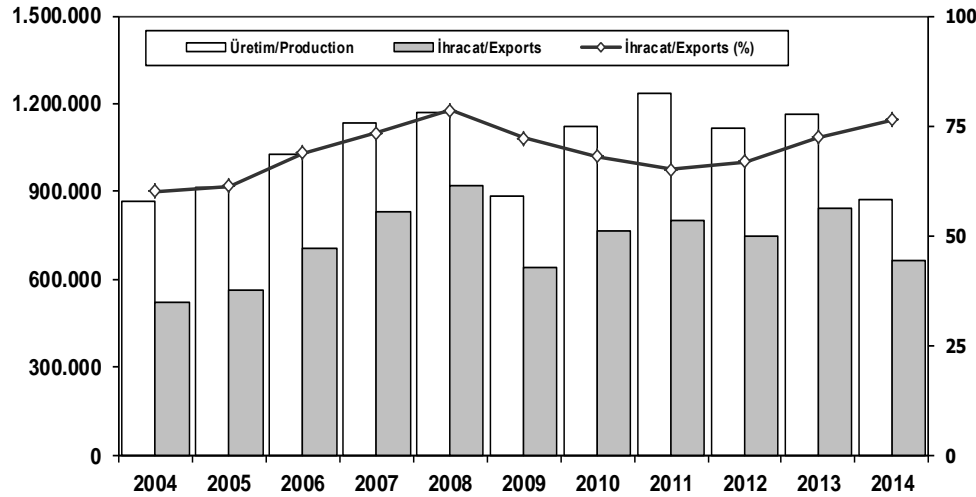
Ağır Ticari Araç Pazarı (x1000)

HCV Market (x1000)



	1	2	3	4	5	6	7	8	9	10	11	12	9 Ay/Mo	Total
2004	2.269	2.310	4.579	3.981	4.344	3.498	2.491	3.546	3.820	3.153	3.037	6.146	30.838	43.174
2005	1.940	2.525	3.795	4.029	4.026	3.583	2.832	4.636	4.626	4.153	4.355	7.629	31.992	48.129
2006	2.052	3.708	5.038	4.815	5.060	3.848	2.786	3.607	3.520	3.263	4.031	5.935	34.434	47.663
2007	1.833	2.518	3.598	3.267	3.317	2.987	2.627	3.613	3.497	3.333	3.704	5.150	27.257	39.444
2008	2.265	2.870	3.165	3.266	3.029	3.069	2.536	2.922	2.897	2.263	1.899	2.340	26.019	32.521
2009	1.025	1.104	1.420	1.786	1.696	2.035	1.401	1.483	2.006	1.084	1.240	2.463	13.956	18.743
2010	955	1.141	2.059	2.133	2.251	2.494	2.373	2.881	2.787	3.376	3.444	6.365	19.074	32.259
2011	2.766	3.685	4.930	4.376	4.447	4.290	2.320	2.972	3.514	3.219	3.538	6.371	33.300	46.428
2012	1.674	2.503	4.073	3.065	3.957	3.714	2.818	2.700	3.568	2.739	3.335	5.713	28.072	39.859
2013	1.617	2.624	3.914	3.440	3.953	3.675	3.130	2.340	3.074	2.385	3.716	5.878	27.767	39.746
2014	1.620	2.479	3.269	3.439	3.744	3.717	2.285	2.638	3.612	0	0	0	26.803	26.803

İhracat/Üretim (2004-2014) Exports/Production (2004-2014)



	2004	2005	2006	2007	2008	2009	2010	2011	2012	2013	2014
Üretim/Production	864.073	916.062	1.026.427	1.132.951	1.171.917	884.466	1.124.982	1.234.637	1.115.233	1.166.043	872.431
İhracat/Exports	518.595	561.078	706.402	829.879	920.763	637.855	763.670	801.112	745.354	843.467	665.987
İhracat/Exports (%)	60	61	69	73	79	72	68	65	67	72	76

Taşıt Araçları İhracatı Motor Vehicle Exports

SEKTÖR/SECTOR	2012	2013	2013	2014	2013/2014 (%)
			9 Ay-9 Mo		
OTOMOBİL / P.Cars	412.991	484.504	354.358	433.314	22
TİCARİ ARAÇLAR / CV	316.932	343.967	263.782	219.770	-17
* Kamyonet/Pick-Up	292.601	300.765	232.987	197.260	-15
* Minibüs/Minibus	16.429	34.664	25.286	17.850	-29
* Kamyon/Truck	2.682	3.055	1.838	834	-55
* Midibüs/Midibus	1.173	985	695	580	-17
* Otobüs/Bus	4.047	4.498	2.976	3.246	9
TAŞIT ARAÇLARI / MV TOTAL	729.923	828.471	618.140	653.084	6
TRAKTÖR/F.TRACTOR	15.431	14.996	10.739	12.903	20
TOTAL	745.354	843.467	628.879	665.987	6

Otomotiv Ana ve Yan Sanayii İhracatı (ABD \$) CBU and CKD Exports - \$

SEKTÖR/SECTOR	2011 Toplam (Total)	2012 Toplam (Total)	2013 Toplam (Total)	2013	2014	2014/2013 (%)
				9 Ay (9 Months)		
Toplam Yan Sanayi/Total Component Industry	6.595.662.583	8.307.826.870	8.223.513.061	6.731.250.809	7.306.143.974	9
İç ve Dış Lastik / Tyres	988.990.821	1.373.205.546	1.200.828.712	856.211.117	902.823.361	5
Emniyet Camı / Safety Glasses	107.203.983	120.041.467	120.710.174	99.916.126	109.197.361	9
Motor (Engine)	305.490.804	273.896.369	272.085.582	236.150.777	132.659.251	-44
Akümülatör / Batteries	186.504.496	232.611.079	250.345.945	213.079.274	202.638.121	-5
Diğer Aksam ve Parça / Spare Parts and Components	5.007.472.478	6.308.072.409	6.379.542.648	5.325.893.515	5.958.825.880	12
Toplam Ana Sanayi/Total Vehicle Industry	10.855.476.447	12.128.522.618	11.101.346.096	9.147.280.337	9.998.101.243	9
Otobüs / Bus	744.935.284	929.372.870	856.072.335	633.067.794	719.988.405	14
Midibüs-Minibüs / Minibus- Minibus	120.378.674	145.199.034	161.806.275	106.201.005	62.926.776	-41
Otomobil (P. Cars)	6.217.404.551	6.541.969.418	6.067.964.588	5.169.027.122	5.531.515.722	7
Kamyon-Kamyonet/HCV-LCV	3.363.101.038	4.034.772.621	3.433.318.136	2.795.811.045	3.160.751.223	13
Çekici/Truck-Tractor	145.710.283	116.912.332	195.260.385	157.053.837	184.382.807	17
Römork ve Yarı Römork/Trailer-Semi Trailer	72.145.150	147.247.613	71.336.635	47.725.455	30.945.436	-35
Tarım Traktörü/Farm Tractor	191.801.467	213.048.730	315.587.742	238.394.079	307.590.873	29
Toplam/Total	17.451.139.030	20.436.349.488	19.324.859.157	15.878.531.146	17.304.245.216	9

Kaynak: Otomotiv Endüstrisi İhracatçıları Birliği

Firma Bazında İhracat (Adet)
Export Of member Companies (Unit)

FİRMALAR Companies	2012	2013	Ocak-Eylül 9 Months	
			2013	2014
			OYAK RENAULT	227.162
FORD OTOSAN	191149	208722	161786	135151
HYUNDAI ASSAN	67453	85500	55479	132170
TOFAŞ	154068	160309	121390	105305
TOYOTA	63549	86908	59651	87264
TÜRK TRAKTÖR	14572	14402	10318	11950
M. BENZ TÜRK	4054	5331	3459	2453
HONDA TÜRKİYE	7959	2121	1671	1278
HATTAT TARIM	859	594	421	953
MAN TÜRKİYE	885	898	605	694
A.I.O.S.	943	770	554	484
OTOKAR	510	620	393	327
TEMSA GLOBAL	856	663	487	239
KARSAN	10994	10120	8391	28
BMC	341	1	1	0
GENEL TOPLAM	745.354	843.467	628.879	665.987

Kaynak: OSD

Sektör Bazında İhracat (\$)
Exports on Sectorial Basis

Sıra No	Sektörler	2013	Toplam	Ocak-Eylül (January-September)			
				2013	2014	2014/2013 (%)	2014 (%) Pay
1	Otomotiv Endüstrisi *	21.303.974	15.713.944	16.930.625	7,7	14,3	
2	Kimyevi Maddeler ve Mamülleri	17.449.946	12.871.967	13.404.563	4,1	11,3	
3	Hazırlanmış ve Konfeksiyon	17.368.774	12.947.137	14.377.293	11,0	12,2	
4	Çelik	13.835.088	10.456.133	10.109.560	-3,3	8,6	
5	İhracatçı Birlikleri Kaydından Muaf İhracat	4.966.848	4.966.848	5.364.334	8,0	4,5	
6	Elektrik-Elektronik ve Makina	11.700.062	8.397.919	8.929.128	6,3	7,6	
7	Tekstil ve Hammaddeleri	8.390.142	6.204.811	6.727.021	8,4	5,7	
8	Demir ve Demir Dışı Metaller	6.834.086	5.071.109	5.390.578	6,3	4,6	
9	Hububat, Bakliyat, Yağlı Tohumlar	6.586.089	4.706.119	4.903.297	4,2	4,1	
10	Makine ve Aksamları	5.780.417	4.220.642	4.527.671	7,3	3,8	
11	Madencilik Ürünleri	5.041.706	3.790.254	3.547.664	-6,4	3,0	
12	Ağaç Mamülleri, Orman Ürünleri	4.458.361	3.201.970	3.381.233	5,6	2,9	
13	İklimlendirme Sanayi	4.182.275	3.038.837	3.367.981	10,8	2,8	
14	Çimento ve Toprak Ürünleri	3.153.549	2.399.819	2.407.645	0,3	2,0	
15	Yaş Meyve ve Sebze	2.351.593	1.434.339	1.506.862	5,1	1,3	
16	Halı	2.196.024	1.569.375	1.708.208	8,8	1,4	
17	Mücevher	2.250.327	1.630.642	1.872.630	14,8	1,6	
18	Fındık ve Mamülleri	1.774.073	1.219.133	1.440.821	18,2	1,2	
19	Deri ve Deri Mamülleri	1.898.193	1.380.088	1.396.027	1,2	1,2	
20	Su Ürünleri ve Hayvansal Mamuller	1.988.327	1.437.049	1.694.105	17,9	1,4	
21	Kuru Meyve ve Mamülleri	1.439.178	989.221	970.385	-1,9	0,8	
22	Gemi ve Yat	1.163.591	961.218	876.987	-8,8	0,7	
23	Savunma Sanayi	1.391.602	986.291	1.211.824	22,9	1,0	
24	Meyve Sebze Mamülleri	1.331.374	942.569	1.043.398	10,7	0,9	
25	Tütün ve Mamülleri	906.351	714.407	809.363	13,3	0,7	
26	Zeytin ve Zeytinyağı	439.743	363.675	173.112	-52,4	0,1	
27	Diğer Sanayi Ürünleri	104.661	82.631	85.989	4,1	0,1	
28	Süs Bitkileri	76.992	58.890	66.879	13,6	0,1	
	TOPLAM	150.363.346	111.757.037	118.225.183	5,8	100,0	

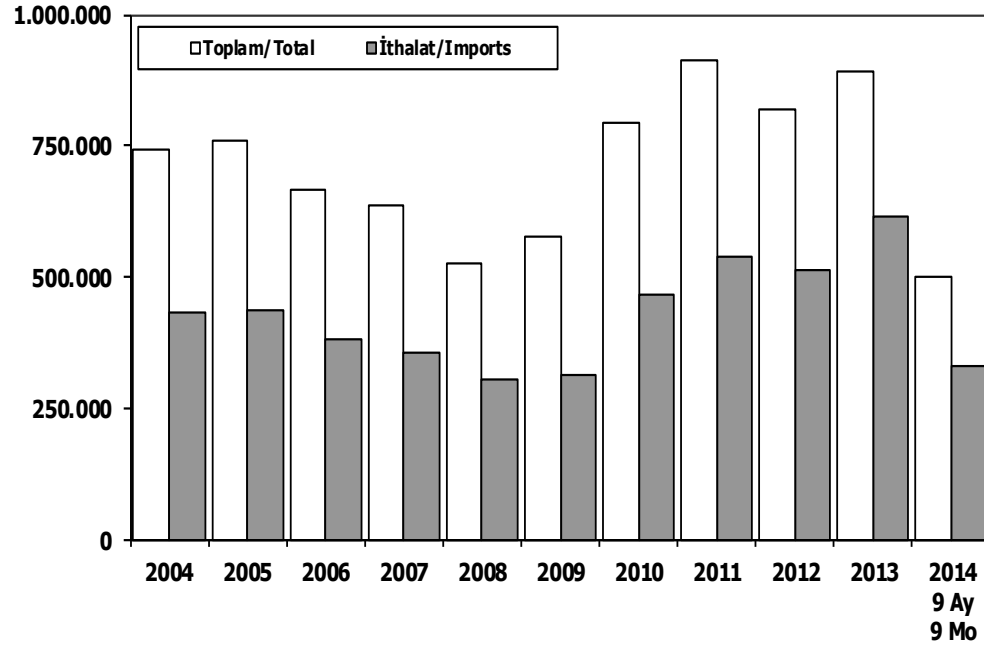
*(Hava, kara, deniz ve demiryolu taşıtan toplamı)

Kaynak: TİM

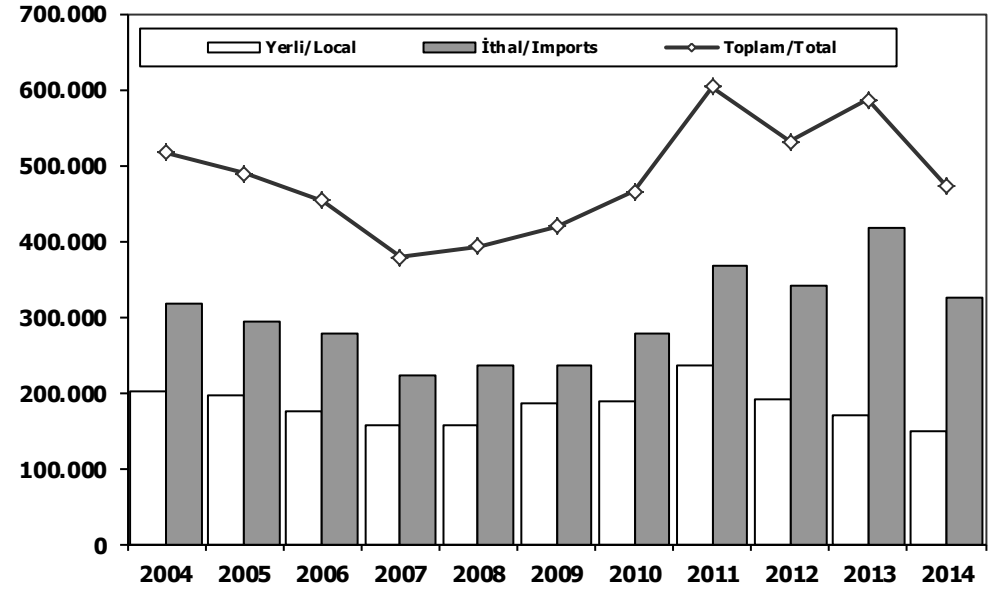
First 3 Sectors:

- 1- Transport Vehicle and Component Industry
- 2- Chemical Articles and Products
- 3- Ready Wear and Confection

Toplam Pazar (Otomobil+T.Araç) Total Market (P.Cars+C.V)



Hafif Araçlar Pazarı (2004-2014 Ocak-Eylül) LV Market (2004-2014 January-September)

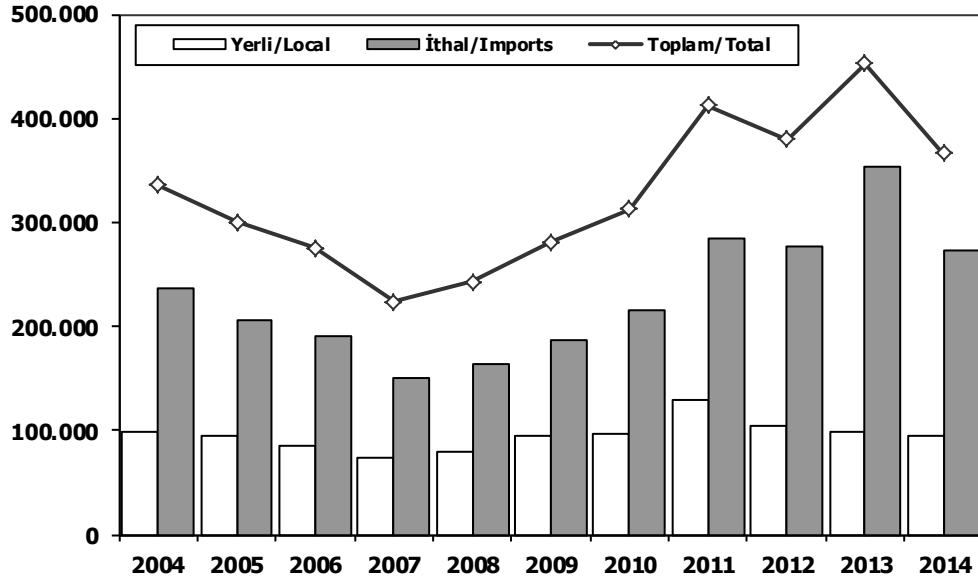


	2004	2005	2006	2007	2008	2009	2010	2011	2012	2013	2013 9 Ay 9 Mo	2014 9 Ay 9 Mo
Toplam/Total	741.269	758.537	665.515	634.206	526.544	575.869	793.172	910.867	817.620	893.124	614.112	500.301
İthalat/Imports	430.204	436.033	382.460	355.752	306.087	313.921	465.408	538.532	511.694	615.609	424.358	331.742
İthalat/Imports (%)	58	57	57	56	58	55	59	59	63	69	69	66

	2004	2005	2006	2007	2008	2009	2010	2011	2012	2013	2014
Yerli/Local	201.017	196.958	175.680	156.668	156.560	184.560	188.639	235.848	189.886	168.578	148.365
İthal/Imports	315.954	292.239	276.976	221.130	236.248	234.648	276.539	367.603	340.827	417.767	325.133
Toplam/Total	516.971	489.197	452.656	377.798	392.808	419.208	465.178	603.451	530.713	586.345	473.498
İthalat/Imports (%)	61	60	61	59	60	56	59	61	64	71	69

Otomobil Pazarı (2004-2014 Ocak-Eylül)

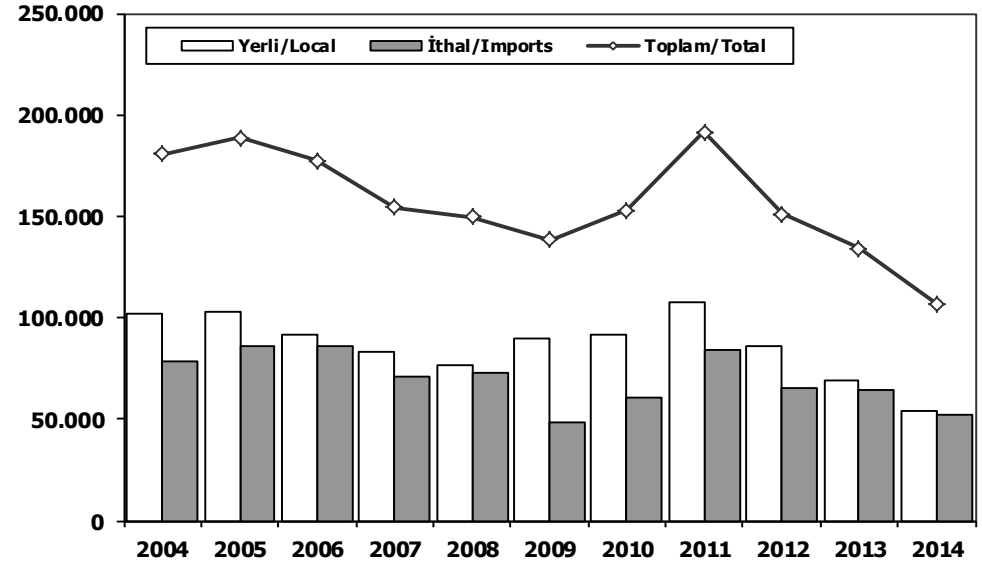
P.Cars Market (2004-2014 January-September)



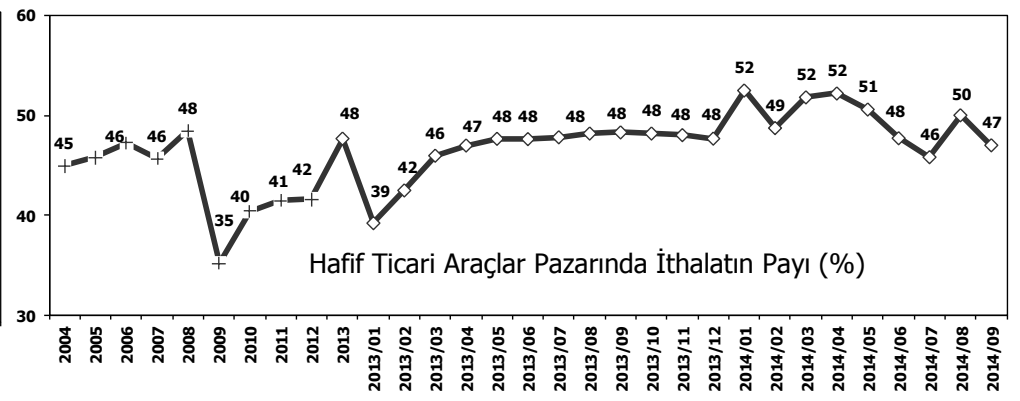
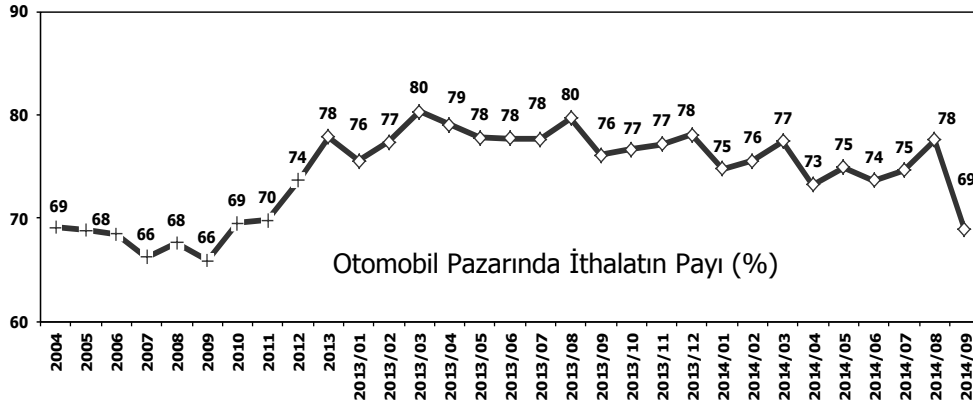
	2004	2005	2006	2007	2008	2009	2010	2011	2012	2013	2014
Yerli/Local	99.158	94.017	84.372	73.551	79.661	94.733	96.921	128.497	103.676	99.279	94.199
İthal/Imports	237.015	206.332	190.782	149.957	163.469	186.299	215.482	283.606	275.941	353.075	272.569
Toplam/Total	336.173	300.349	275.154	223.508	243.130	281.032	312.403	412.103	379.617	452.354	366.768
İthalat/Imports (%)	71	69	69	67	67	66	69	69	73	78	74

Hafif Ticari Araçlar Pazarı (2004-2014 Ocak-Eylül)

Light Commercial Vehicle Market (2004-2014 January-September)

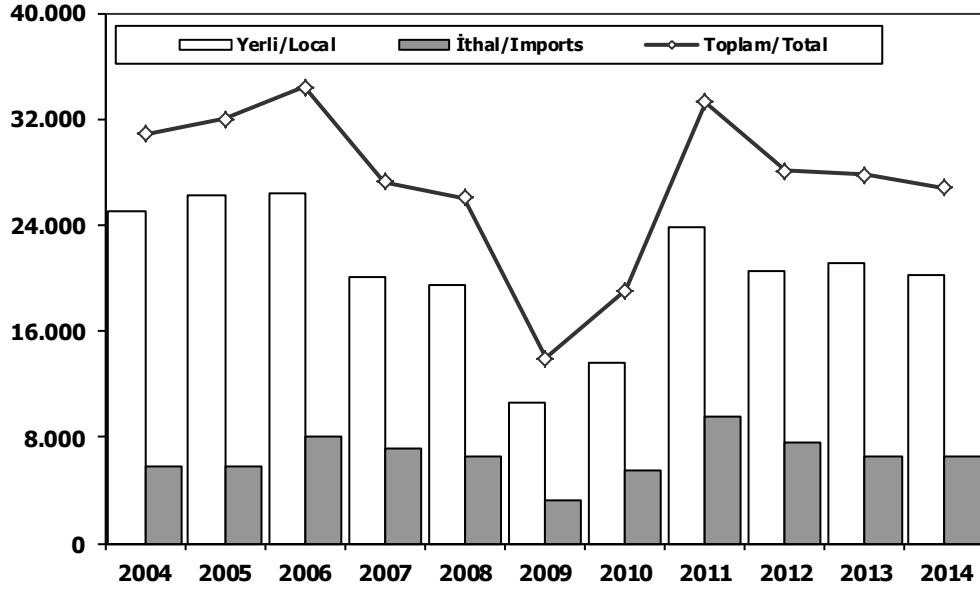


	2004	2005	2006	2007	2008	2009	2010	2011	2012	2013	2014
Yerli/Local	101.859	102.941	91.308	83.117	76.899	89.827	91.718	107.351	86.210	69.299	54.166
İthal/Imports	78.939	85.907	86.194	71.173	72.779	48.349	61.057	83.997	64.886	64.692	52.564
Toplam/Total	180.798	188.848	177.502	154.290	149.678	138.176	152.775	191.348	151.096	133.991	106.730
İthalat/Imports (%)	44	45	49	46	49	35	40	44	43	48	49



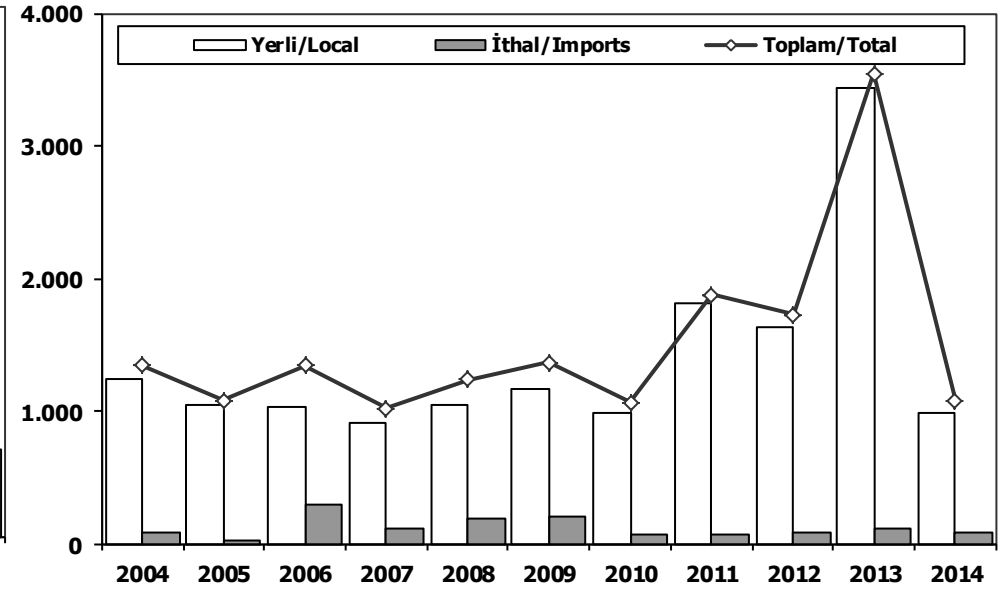
Ağır Ticari Araçlar Pazarı (2004-2014 Ocak-Eylül)

HCV Market (2004-2014 January-September)



Otobüs Pazarı (2004-2014 Ocak-Eylül)

Bus Market (2004-2014 January-September)

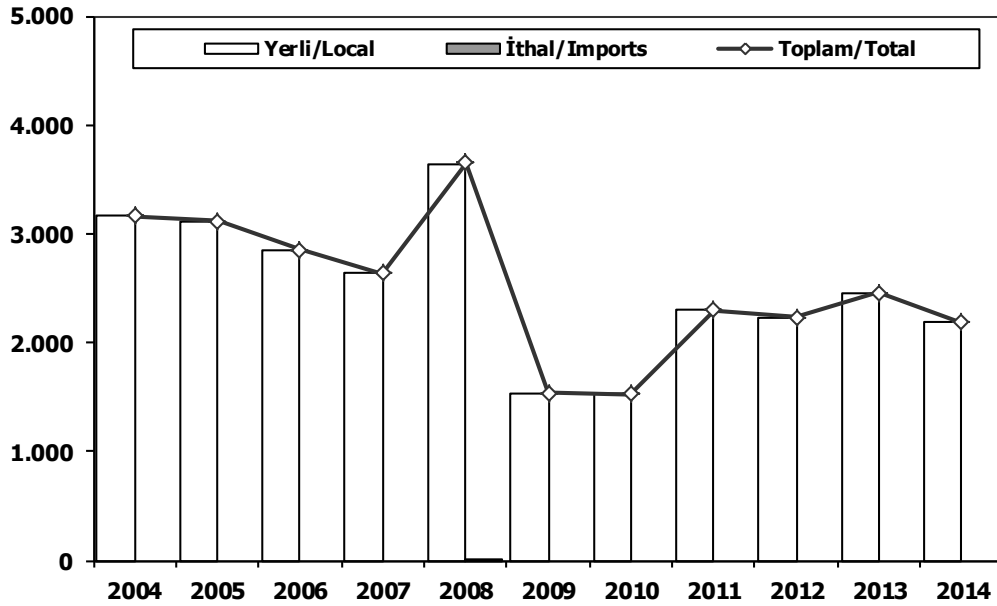


	2004	2005	2006	2007	2008	2009	2010	2011	2012	2013	2014
Yerli/Local	27.598	29.325	28.706	22.448	21.105	11.465	15.932	26.209	22.568	23.311	20.194
İthal/Imports	6.393	6.820	8.991	8.142	7.177	3.575	6.518	10.310	8.243	6.841	6.609
Toplam/Total	33.991	36.145	37.697	30.590	28.282	15.040	22.450	36.519	30.811	30.152	26.803
İthalat/Imports (%)	19	19	24	27	25	24	29	28	27	23	25

	2004	2005	2006	2007	2008	2009	2010	2011	2012	2013	2014
Yerli/Local	1.250	1.052	1.042	913	1.043	1.169	993	1.811	1.640	3.436	995
İthal/Imports	94	34	305	113	198	201	76	68	89	115	90
Toplam/Total	1.344	1.086	1.347	1.026	1.241	1.370	1.069	1.879	1.729	3.551	1.085
İthalat/Imports (%)	7	3	23	11	16	15	7	4	5	3	8

Midibüs Pazarı (2004-2014 Ocak-Eylül) (7-9 mt/25-35 Kişilik)

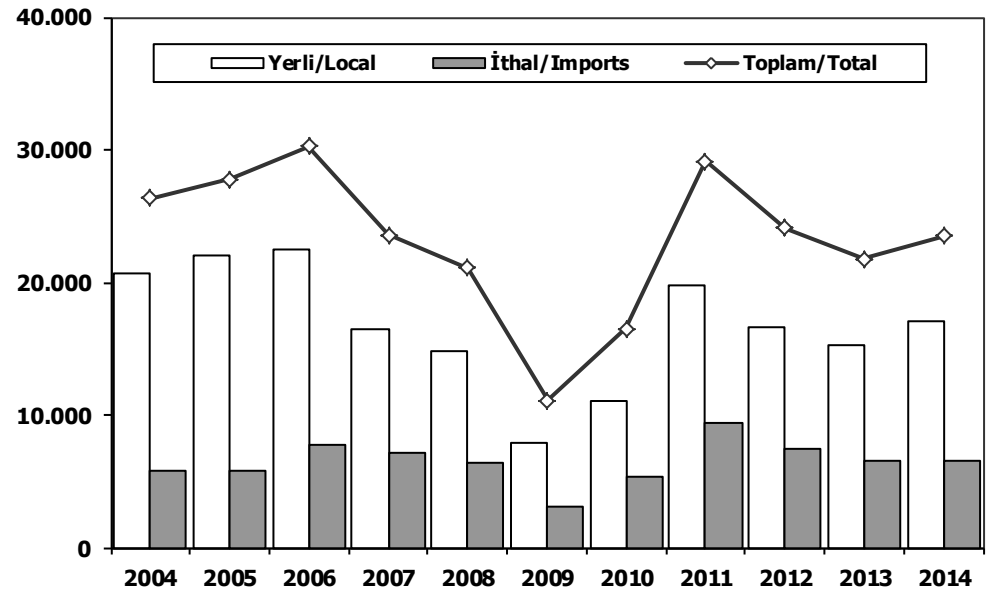
Midibus Market (2004-2014 January-September) (7-9 mt/25-35 Passengers)



	2004	2005	2006	2007	2008	2009	2010	2011	2012	2013	2014
Yerli/Local	3.162	3.120	2.850	2.634	3.643	1.533	1.527	2.298	2.228	2.455	2.188
İthal/Imports	0	0	0	0	11	0	0	0	0	0	0
Toplam/Total	3.162	3.120	2.850	2.634	3.654	1.533	1.527	2.298	2.228	2.455	2.188
İthalat/Imports (%)	0	0	0	0	0	0	0	0	0	0	0

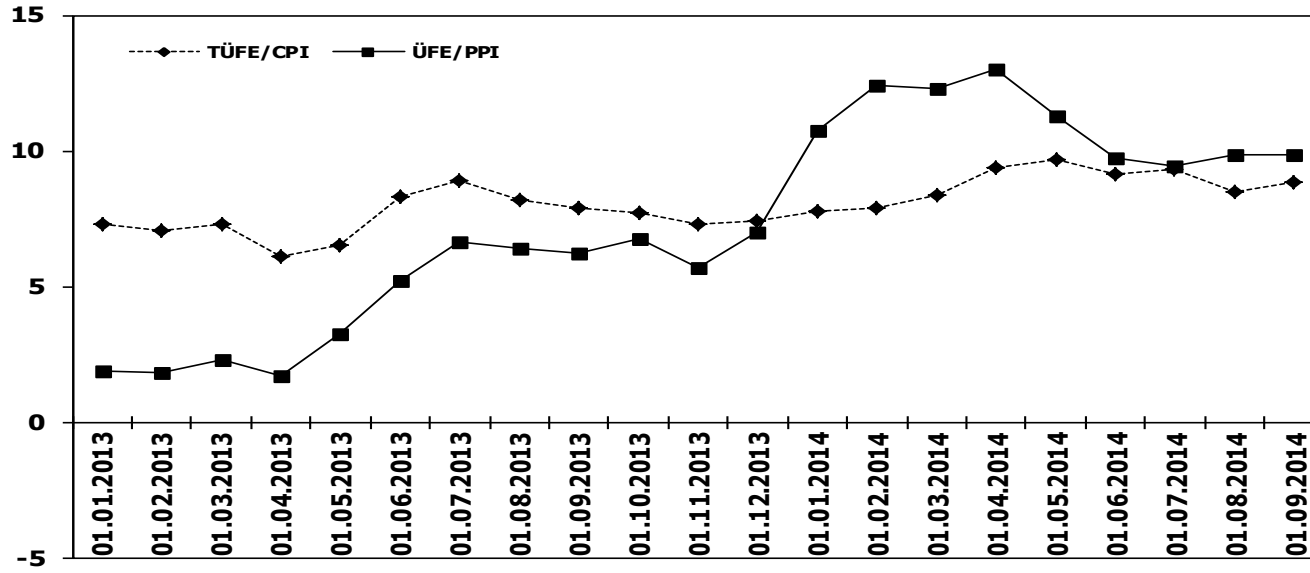
Kamyon Pazarı (2004-2014 Ocak-Eylül)

Truck Market (2004-2014 January-September)

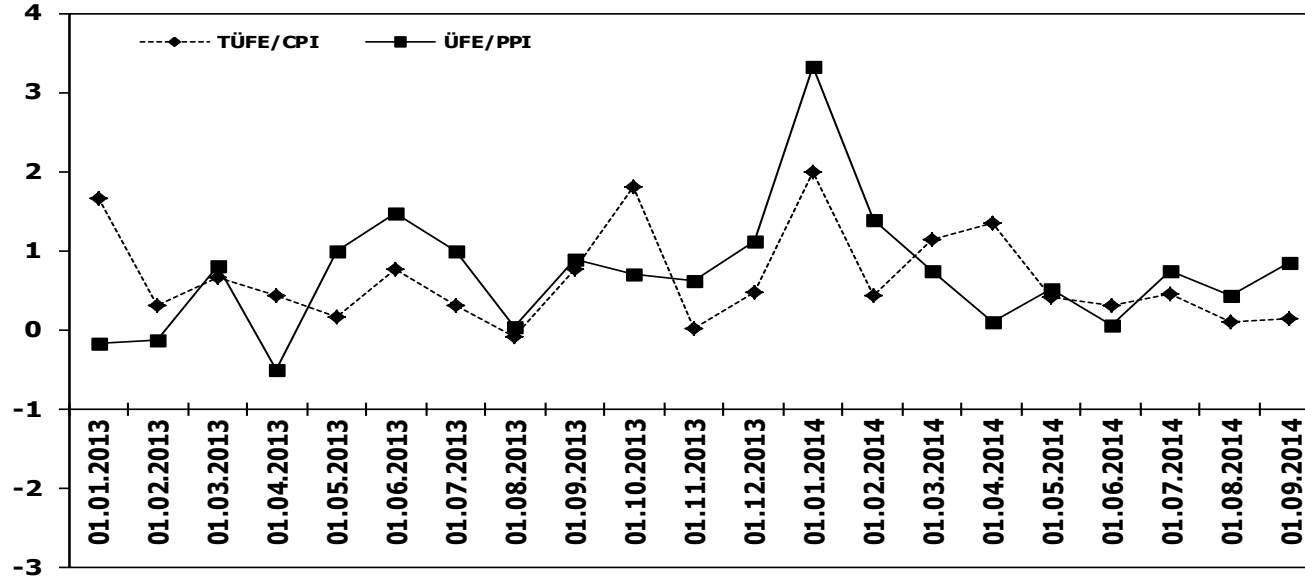


	2004	2005	2006	2007	2008	2009	2010	2011	2012	2013	2014
Yerli/Local	20.606	22.003	22.499	16.515	14.754	7.947	11.072	19.706	16.662	15.285	17.011
İthal/Imports	5.726	5.783	7.738	7.082	6.370	3.106	5.406	9.417	7.453	6.476	6.519
Toplam/Total	26.332	27.786	30.237	23.597	21.124	11.053	16.478	29.123	24.115	21.761	23.530
İthalat/Imports (%)	22	21	26	30	30	28	33	32	31	30	28

TÜFE ve ÜFE'nin Yıllık Değişimi (%) CPI and PPI Yearly Changes (%)



TÜFE ve ÜFE'nin Aylık Değişimi (%) CPI and PPI Monthly Changes (%)



2014 Otomotiv Sanayii Dış Satışlar 2014 Automotive Industry Exports Sales

TİPLER - Types	Ocak January	Şubat February	Mart March	Nisan April	Mayıs May	Haziran June	Temmuz July	Ağustos August	Eylül September	Ekim October	Kasım November	Aralık December	TOPLAM Total
Otomobil	35.925	46.549	53.966	55.913	52.296	54.886	53.125	26.433	54.221	0	0	0	433.314
OTOMOBİL-Pass. Car	35.925	46.549	53.966	55.913	52.296	54.886	53.125	26.433	54.221	0	0	0	433.314
TİCARİ ARAÇ	15.499	22.600	28.280	26.961	29.622	29.842	26.562	11.514	28.890	0	0	0	219.770
* KAMYONET-Pick Up	14.122	20.532	25.507	24.027	26.654	27.200	24.154	9.535	25.529	0	0	0	197.260
* KAMYON-Truck	61	94	71	73	122	106	157	71	79	0	0	0	834
* MİDİBÜS-Midibus	54	20	126	49	79	126	14	89	23	0	0	0	580
* MİNİBÜS-Minibus	1.088	1.617	2.174	2.429	2.397	1.997	1.811	1.454	2.883	0	0	0	17.850
* OTOBÜS-Bus	174	337	402	383	370	413	426	365	376	0	0	0	3.246
Traktör	864	1.332	1.335	1.198	1.761	1.819	1.522	1.256	1.816	0	0	0	12.903
TRAKTÖR-F.Tractor	864	1.332	1.335	1.198	1.761	1.819	1.522	1.256	1.816	0	0	0	12.903
TOPLAM-Total	52.288	70.481	83.581	84.072	83.679	86.547	81.209	39.203	84.927	0	0	0	665.987

Otomobil

FİRMALAR-Companies	Ocak January	Şubat February	Mart March	Nisan April	Mayıs May	Haziran June	Temmuz July	Ağustos August	Eylül September	Ekim October	Kasım November	Aralık December	TOPLAM Total
FORD OTOSAN	0	15	17	175	1.746	1.426	1.470	153	479	0	0	0	5.481
HONDA TÜRKİYE	147	63	0	240	90	275	295	61	107	0	0	0	1.278
HYUNDAI ASSAN	12.425	9.200	15.000	17.000	17.245	17.170	15.700	11.300	17.130	0	0	0	132.170
OYAK RENAULT	12.579	24.852	24.495	24.941	20.480	24.089	22.191	9.058	25.006	0	0	0	187.691
TOFAŞ	1.885	2.135	3.083	2.380	2.287	2.749	2.090	620	2.201	0	0	0	19.430
TOYOTA	8.889	10.284	11.371	11.177	10.448	9.177	11.379	5.241	9.298	0	0	0	87.264
TOPLAM-Total	35.925	46.549	53.966	55.913	52.296	54.886	53.125	26.433	54.221	0	0	0	433.314

Kamyonet

FİRMALAR-Companies	Ocak January	Şubat February	Mart March	Nisan April	Mayıs May	Haziran June	Temmuz July	Ağustos August	Eylül September	Ekim October	Kasım November	Aralık December	TOPLAM Total
FORD OTOSAN	5.035	10.950	14.732	14.368	15.771	16.000	13.203	6.829	14.425	0	0	0	111.313
KARSAN	6	0	0	0	2	1	0	0	0	0	0	0	9
OTOKAR	0	0	0	0	10	39	0	14	0	0	0	0	63
TOFAŞ	9.081	9.582	10.775	9.659	10.871	11.160	10.951	2.692	11.104	0	0	0	85.875
TOPLAM-Total	14.122	20.532	25.507	24.027	26.654	27.200	24.154	9.535	25.529	0	0	0	197.260

Minibüs

FİRMALAR-Companies	Ocak January	Şubat February	Mart March	Nisan April	Mayıs May	Haziran June	Temmuz July	Ağustos August	Eylül September	Ekim October	Kasım November	Aralık December	TOPLAM Total
FORD OTOSAN	1.088	1.617	2.173	2.429	2.387	1.996	1.807	1.449	2.879	0	0	0	17.825
KARSAN	0	0	1	0	0	1	4	5	4	0	0	0	15
OTOKAR	0	0	0	0	10	0	0	0	0	0	0	0	10
TOPLAM-Total	1.088	1.617	2.174	2.429	2.397	1.997	1.811	1.454	2.883	0	0	0	17.850

Kamyon

FİRMALAR-Companies	Ocak January	Şubat February	Mart March	Nisan April	Mayıs May	Haziran June	Temmuz July	Ağustos August	Eylül September	Ekim October	Kasım November	Aralık December	TOPLAM Total
FORD OTOSAN	32	55	67	53	91	81	93	30	30	0	0	0	532
KARSAN	0	0	0	1	0	0	0	0	0	0	0	0	1
M. BENZ TÜRK	29	39	4	19	31	25	64	41	49	0	0	0	301
TOPLAM-Total	61	94	71	73	122	106	157	71	79	0	0	0	834

Midibüs

FİRMALAR-Companies	Ocak January	Şubat February	Mart March	Nisan April	Mayıs May	Haziran June	Temmuz July	Ağustos August	Eylül September	Ekim October	Kasım November	Aralık December	TOPLAM Total
A.I.O.S.	52	20	108	44	64	71	9	65	5	0	0	0	438
OTOKAR	2	0	17	5	15	55	5	24	18	0	0	0	141
TEMSA GLOBAL	0	0	1	0	0	0	0	0	0	0	0	0	1
TOPLAM-Total	54	20	126	49	79	126	14	89	23	0	0	0	580

Otobüs

FİRMALAR-Companies	Ocak January	Şubat February	Mart March	Nisan April	Mayıs May	Haziran June	Temmuz July	Ağustos August	Eylül September	Ekim October	Kasım November	Aralık December	TOPLAM Total
A.I.O.S.	0	0	34	1	0	0	5	1	5	0	0	0	46
KARSAN	0	0	0	0	0	0	3	0	0	0	0	0	3
M. BENZ TÜRK	86	193	255	233	282	311	278	284	230	0	0	0	2.152
MAN TÜRKİYE	66	90	76	116	70	75	69	41	91	0	0	0	694
OTOKAR	1	3	7	9	12	14	38	13	16	0	0	0	113
TEMSA GLOBAL	21	51	30	24	6	13	33	26	34	0	0	0	238
TOPLAM-Total	174	337	402	383	370	413	426	365	376	0	0	0	3.246

Traktör

FİRMALAR-Companies	Ocak January	Şubat February	Mart March	Nisan April	Mayıs May	Haziran June	Temmuz July	Ağustos August	Eylül September	Ekim October	Kasım November	Aralık December	TOPLAM Total
HATTAT TARIM	42	90	86	130	139	110	109	86	161	0	0	0	953
TÜRK TRAKTÖR	822	1.242	1.249	1.068	1.622	1.709	1.413	1.170	1.655	0	0	0	11.950
TOPLAM-Total	864	1.332	1.335	1.198	1.761	1.819	1.522	1.256	1.816	0	0	0	12.903

2014 Yılı İthal Hafif Araç Satışları 2014 Light Vehicles Import Sales

2014 YILI İTHAL OTOMOBİL SATIŞLARI / P.Cars Import 2014

	2013 TOPLAMI 2013 Total	1	2	3	4	5	6	7	8	9	10	11	12	2014 TOPLAMI 2014 Total
VOLKSWAGEN	88.304	4.242	5.080	6.247	7.025	7.193	6.026	7.104	6.863	6.283	0	0	0	56.063
OPEL	55.719	1.672	1.374	2.316	2.833	3.346	3.431	2.888	2.868	3.125	0	0	0	23.853
RENAULT	32.904	1.719	1.616	2.101	1.842	2.121	1.629	1.719	1.862	2.159	0	0	0	16.768
FORD	58.405	1.389	1.244	1.621	2.400	2.866	3.658	4.762	3.220	2.420	0	0	0	23.580
DACIA	28.901	1.158	1.229	1.854	1.586	1.883	2.274	2.358	2.096	1.492	0	0	0	15.930
NISSAN	18.417	741	1.603	2.355	1.237	1.181	985	1.091	1.687	1.592	0	0	0	12.472
HYUNDAI	29.824	882	1.125	1.362	1.675	1.861	1.986	1.720	1.616	2.324	0	0	0	14.551
MERCEDES	20.023	582	900	1.783	1.619	2.083	2.512	1.723	1.700	2.014	0	0	0	14.916
B.M.W	20.705	334	617	1.875	1.852	1.938	2.076	2.050	2.856	2.417	0	0	0	16.015
AUDI	14.987	455	750	1.175	1.391	1.598	1.255	903	1.657	1.303	0	0	0	10.487
PEUGEOT	23.068	622	871	1.258	1.208	1.324	1.999	1.104	1.109	1.314	0	0	0	10.809
SKODA	12.833	458	632	747	907	1.578	1.200	1.230	1.355	1.300	0	0	0	9.407
CITROEN	19.690	657	715	790	1.062	1.040	888	943	952	1.370	0	0	0	8.417
KIA	13.195	483	462	694	733	775	944	876	981	1.208	0	0	0	7.156
SEAT	11.065	536	352	524	762	811	959	1.326	1.310	719	0	0	0	7.299
TOYOTA	22.421	366	363	512	682	647	576	953	975	888	0	0	0	5.962
FIAT	10.913	587	313	306	553	723	718	516	427	370	0	0	0	4.513
VOLVO	5.021	252	256	412	509	525	501	470	428	448	0	0	0	3.801
HONDA	3.394	142	257	285	455	161	105	295	246	224	0	0	0	2.170
CHEVROLET	12.506	206	161	134	29	8	14	14	0	1	0	0	0	567
SUBARU	1.101	120	70	116	91	108	124	68	96	135	0	0	0	928
LAND ROVER	1.323	26	52	142	95	144	94	88	66	76	0	0	0	783
MINI (İngiliz)	1.557	51	51	150	45	73	56	48	47	88	0	0	0	609
SUZUKI	1.623	76	68	98	99	179	115	83	86	50	0	0	0	854
MITSUBISHI	1.488	83	81	53	70	65	62	58	68	78	0	0	0	618
MAZDA	1.377	30	40	69	133	57	170	61	53	153	0	0	0	766
PROTON	715	110	22	24	74	80	50	20	20	32	0	0	0	432
ALFA ROMEO	1.030	60	26	32	44	147	150	110	62	47	0	0	0	678
JEEP	973	31	66	64	71	46	63	45	171	129	0	0	0	686
PORSCHE	517	45	31	27	41	41	41	57	54	35	0	0	0	372
SSANGYONG	972	44	16	38	52	30	57	41	40	40	0	0	0	358
LANCIA	782	8	31	44	69	17	18	3	2	4	0	0	0	196
CHERY	492	17	16	34	34	53	35	12	17	22	0	0	0	240
GEELY	623	12	5	9	8	3	10	10	9	10	0	0	0	76
MASERATI	40	6	8	9	4	5	4	3	5	7	0	0	0	51
SMART	110	4	5	8	8	5	8	7	0	4	0	0	0	49
JAGUAR	97	0	8	3	5	2	8	4	4	15	0	0	0	49
FERRARI	23	0	3	2	0	0	0	0	0	2	0	0	0	9
BENTLEY	21	0	2	1	0	2	1	2	1	1	0	0	0	10
INFiniti	37	1	0	1	0	1	0	0	0	0	0	0	0	3
LAMBORGHINI	4	0	1	0	0	0	0	0	0	0	0	0	0	1
TATA	326	1	0	0	0	0	17	15	5	27	0	0	0	65
TOPLAM	517.526	18.208	20.522	29.275	31.303	34.722	34.819	34.780	35.014	33.926	0	0	0	272.569

2014 YILI İTHAL HAFİF TİCARİ ARAÇ SATIŞLARI / Light Commercial Vehicles Import 2014

	2013 TOPLAMI 2013 Total	1	2	3	4	5	6	7	8	9	10	11	12	2014 TOPLAMI 2014 Total
VOLKSWAGEN	23.752	1.152	1.144	1.365	1.779	1.956	2.004	1.975	2.208	1.915	0	0	0	15.498
RENAULT	11.550	565	431	556	484	613	666	640	767	849	0	0	0	5.571
MERCEDES	10.421	490	389	712	456	493	658	479	759	679	0	0	0	5.115
FIAT	6.245	397	455	414	557	514	424	414	796	731	0	0	0	4.702
DACIA	7.494	510	400	315	340	427	409	440	505	1.063	0	0	0	4.409
CITROEN	6.679	234	103	318	386	448	666	661	424	610	0	0	0	3.850
PEUGEOT	8.323	78	105	249	445	539	438	361	448	701	0	0	0	3.364
MITSUBISHI	3.592	229	180	201	266	196	168	297	502	557	0	0	0	2.596
ISUZU	2.587	228	138	174	177	190	123	212	260	76	0	0	0	1.578
TOYOTA	2.413	139	105	349	116	66	83	94	118	128	0	0	0	1.198
IVECO	2.204	77	127	212	181	168	189	138	164	201	0	0	0	1.457
HYUNDAI	1.480	117	86	73	117	126	67	149	199	101	0	0	0	1.035
KIA	453	47	44	62	102	114	158	102	241	319	0	0	0	1.189
SSANGYONG	859	63	55	11	33	31	43	64	73	47	0	0	0	420
TATA	316	20	34	16	29	27	16	25	25	25	0	0	0	217
NISSAN	878	9	2	20	13	20	19	9	26	58	0	0	0	176
FORD	657	1	23	12	16	7	14	34	18	55	0	0	0	180
MAZDA	3	0	5	0	0	3	1	0	0	0	0	0	0	9
TOPLAM	89.906	4.356	3.826	5.059	5.497	5.938	6.146	6.094	7.533	8.115	0	0	0	52.564